



DUAL INDUCTION LL3/GR LOG

Company COLT ENERGY, INC.
Well CLINE # GH-3
Field IOLA
County ALLEN
State KANSAS

Company COLT ENERGY, INC.
Well CLINE # GH-3
Field IOLA
County ALLEN
State KANSAS

Location: AP1 #: 15-001-30848-0000
NE NW SE NE
1300' FNL & 950' FEL
SEC 16 TWP 24S RGE 18E

Other Services
CDL/SWN
Elevation 951' est
K.B. ---
D.F. ---
G.L. 951' est

Date	5-29-2014
Run Number	ONE
Depth Driller	1000'
Depth Logger	989'
Bottom Logged Interval	987'
Top Log Interval	SURFACE
Casing Driller	8 5/8" @ 22'
Casing Logger	8 5/8" @ 22'
Bit Size	6 3/4"
Type Fluid in Hole	MUD
Density / Viscosity	
pH / Fluid Loss	
Source of Sample	
Rm @ Meas. Temp	
Rmf @ Meas. Temp	
Rmc @ Meas. Temp	
Source of Rmf / Rmc	
Rm @ BHT	
Time Circulation Stopped	
Time Logger on Bottom	
Maximum Recorded Temperature	
Equipment Number	OW1
Location	HOMINY, OK
Recorded By	LOWERY
Witnessed By	MR. ASHLOCK

<<< Fold Here >>>

All interpretations are opinions based on inferences from electrical or other measurements and we cannot and do not guarantee the accuracy or correctness of any interpretation, and we shall not, except in the case of gross or willful negligence on our part, be liable or responsible for any loss, costs, damages, or expenses incurred or sustained by anyone resulting from any interpretation made by any of our officers, agents or employees. These interpretations are also subject to our general terms and conditions set out in our current Price Schedule.

Comments

OW1-8653
CREW : SHAMBLES



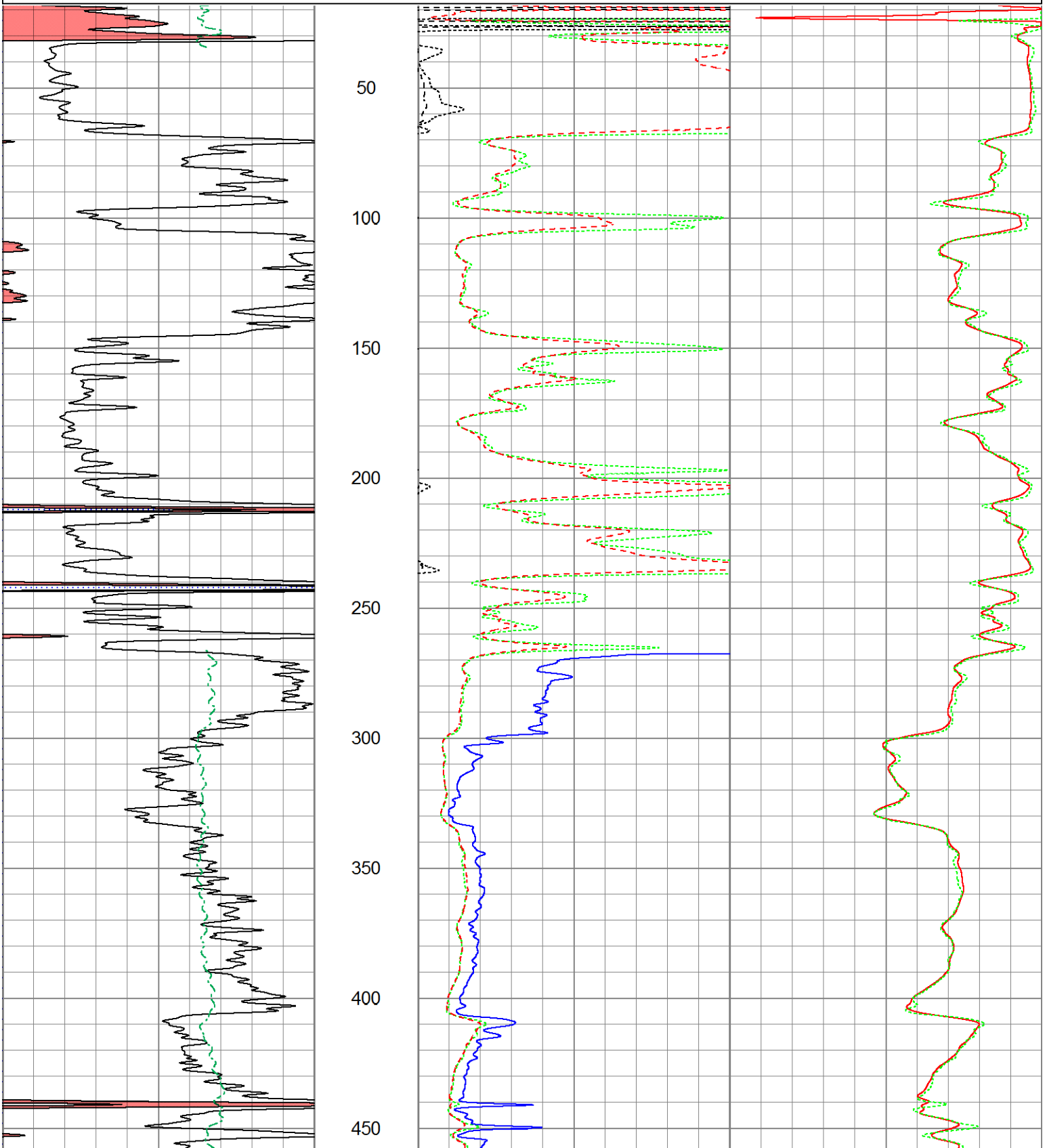
2" DIL SECTION

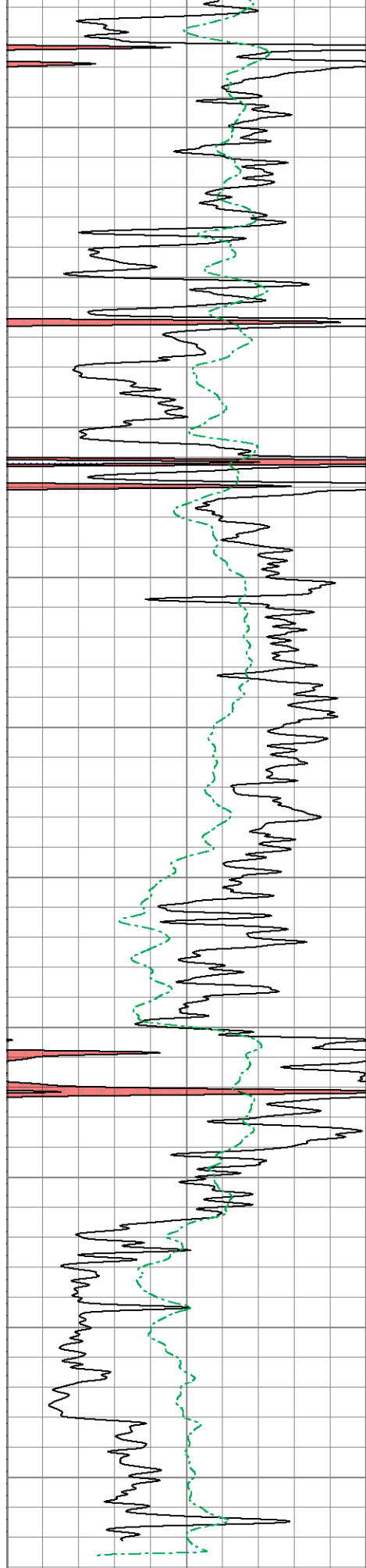
Database File ow1-8653 colt energy.db
 Dataset Pathname DIL/pass1.3
 Presentation Format dil2mdcol
 Dataset Creation Thu May 29 09:57:58 2014
 Charted by Depth in Feet scaled 1:600

0	GR (GAPI)	150
0	SP (mV)	200

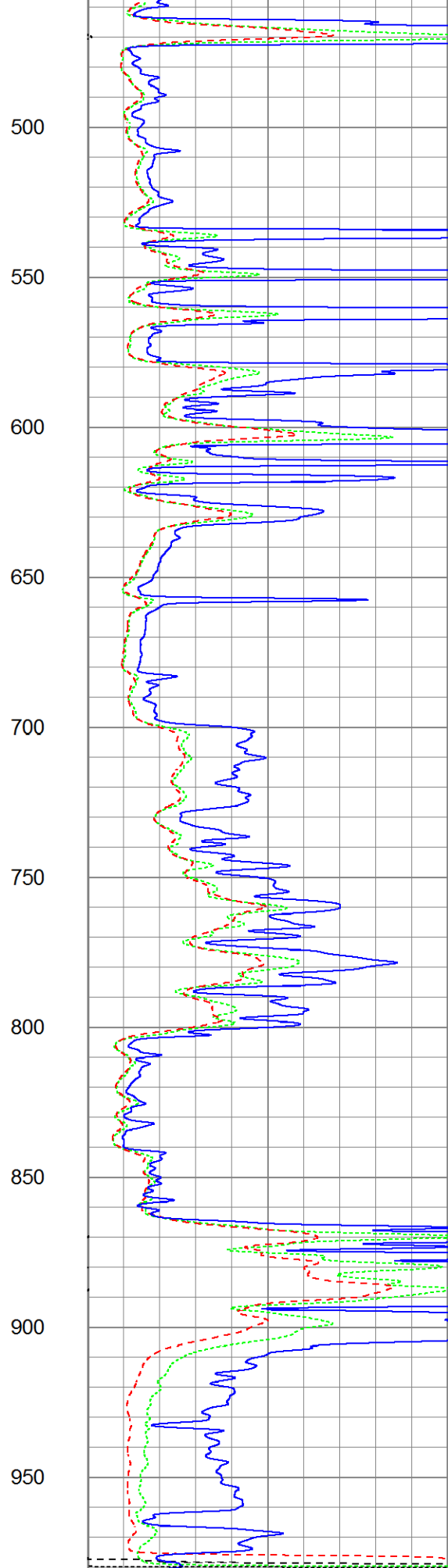
0	RLL3 (Ohm-m)	50
0	RILM (Ohm-m)	50
0	RILD (Ohm-m)	50

1000	CILD (mmho/m)	0
1000	CILM (mmho/m)	0

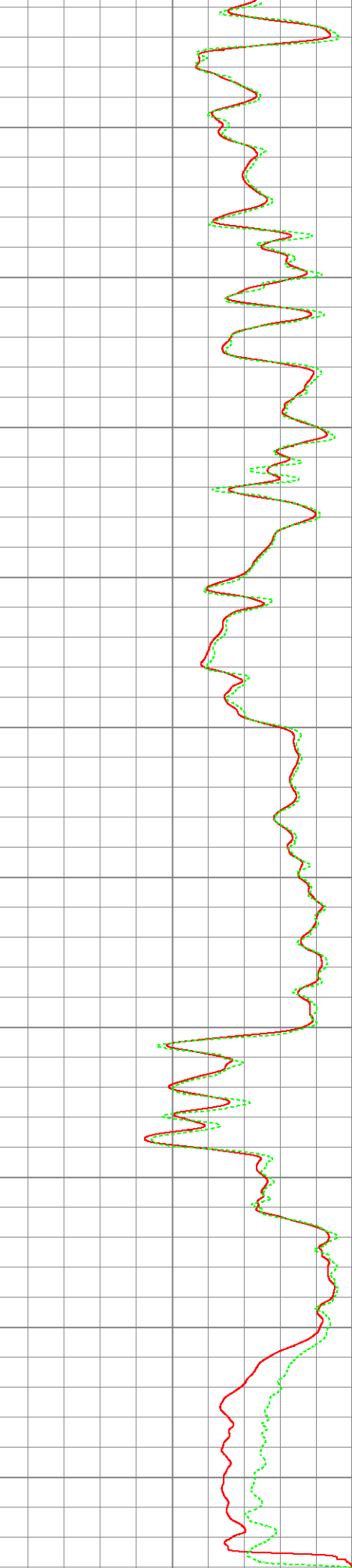




0	GR (GAPI)	150
0	SP (mV)	200



0	RLL3 (Ohm-m)	50
0	RILM (Ohm-m)	50



0		50
---	--	----

0	RILD (Ohm-m)	50	
1000			CILD (mmho/m) 0
1000			CILM (mmho/m) 0

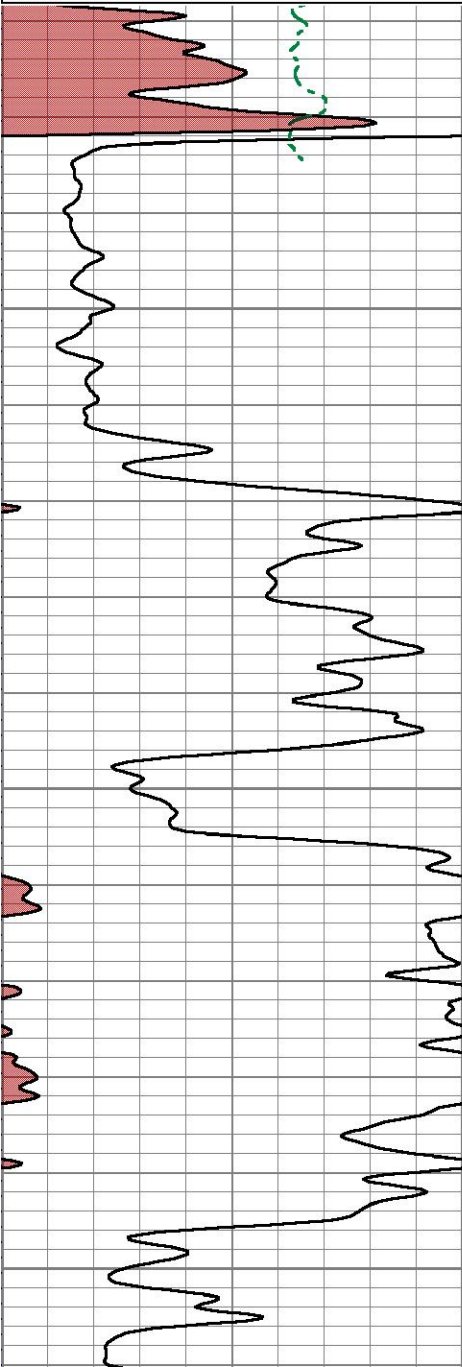


5" DIL SECTION

Database File ow1-8653 colt energy.db
 Dataset Pathname DIL/pass1.2
 Presentation Format dil5mdcol
 Dataset Creation Thu May 29 09:57:51 2014
 Charted by Depth in Feet scaled 1:240

0	Gamma Ray (GAPI)	150
0	SP (mV)	200

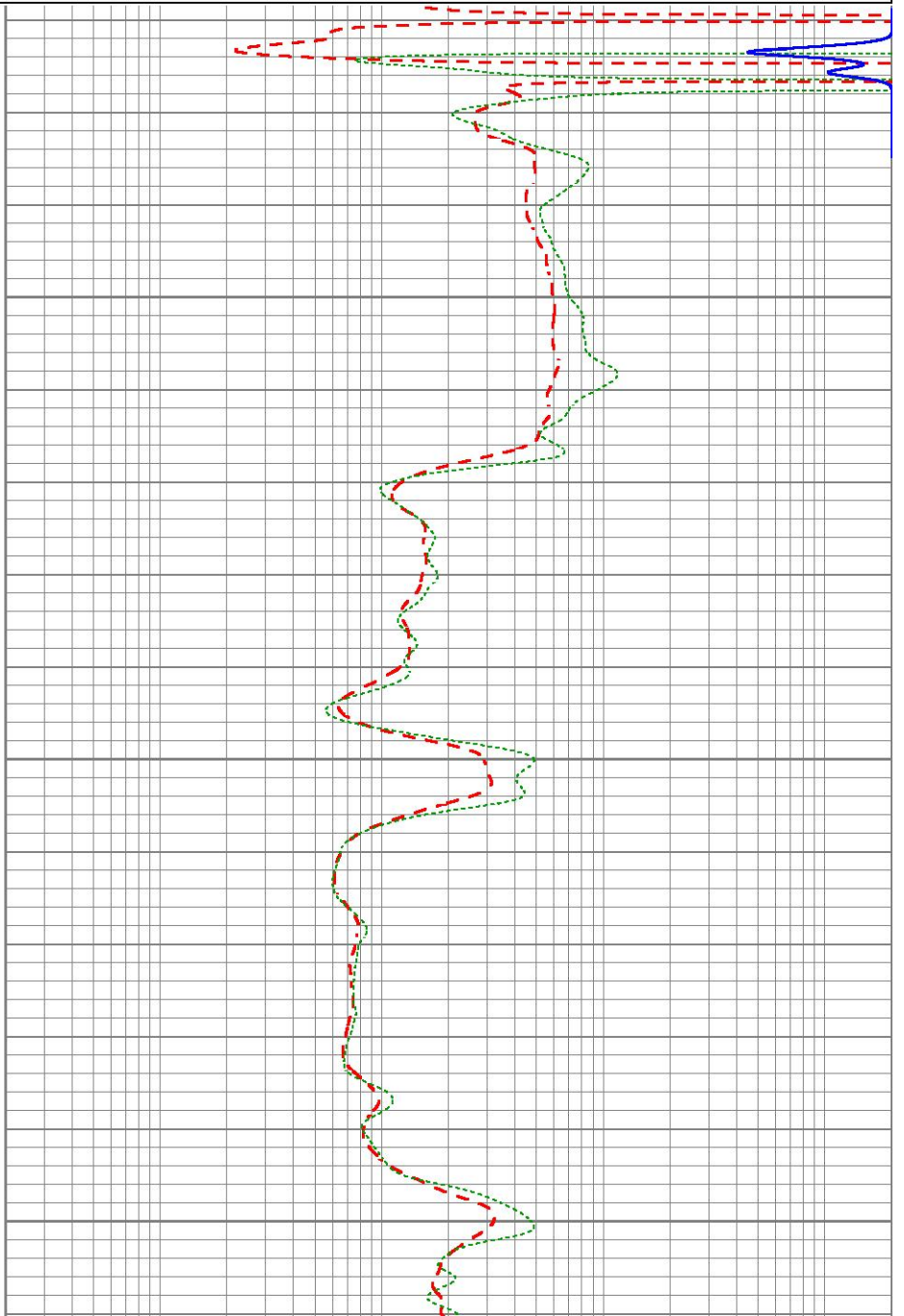
0.2	Deep Resistivity (Ohm-m)	2000
0.2	Medium Resistivity (Ohm-m)	2000
0.2	Shallow Resistivity (Ohm-m)	2000

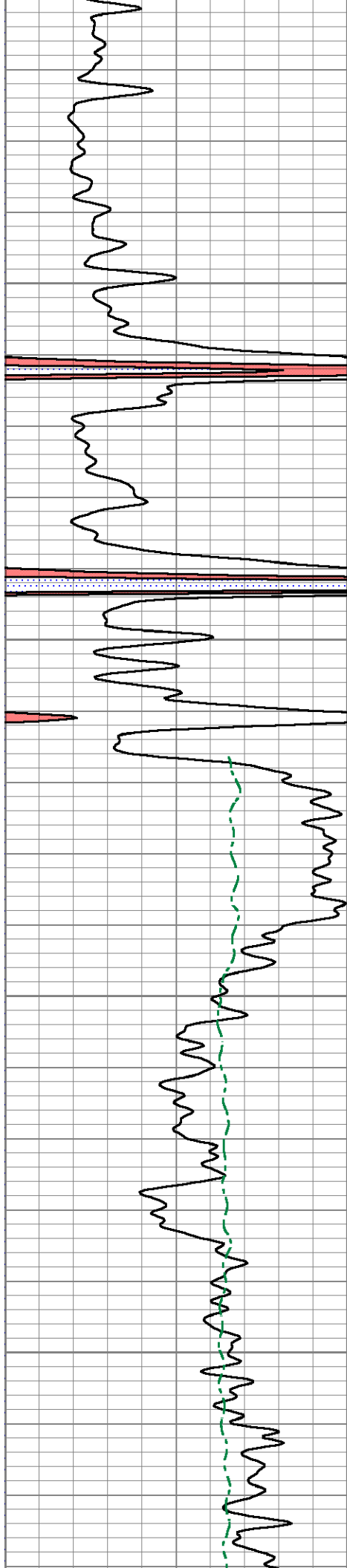


50

100

150



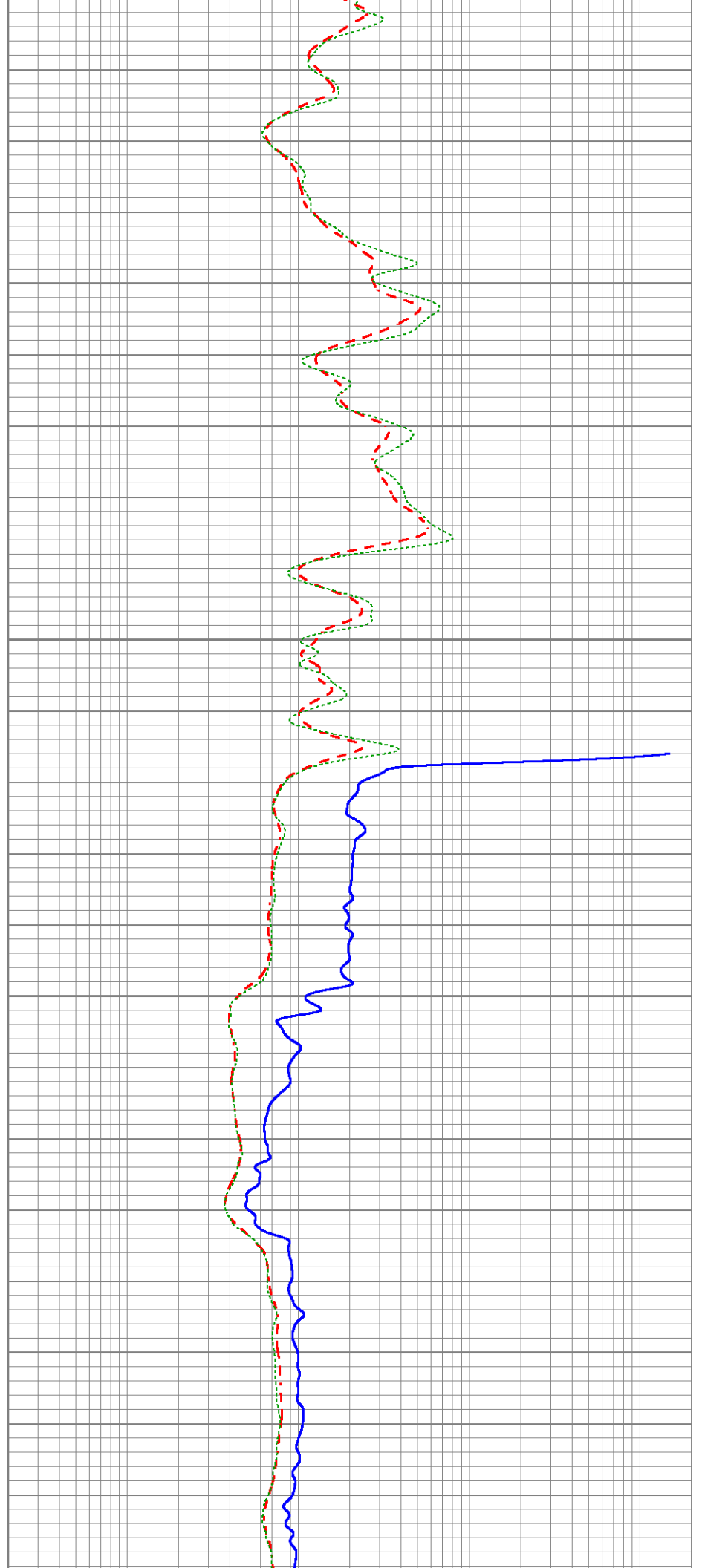


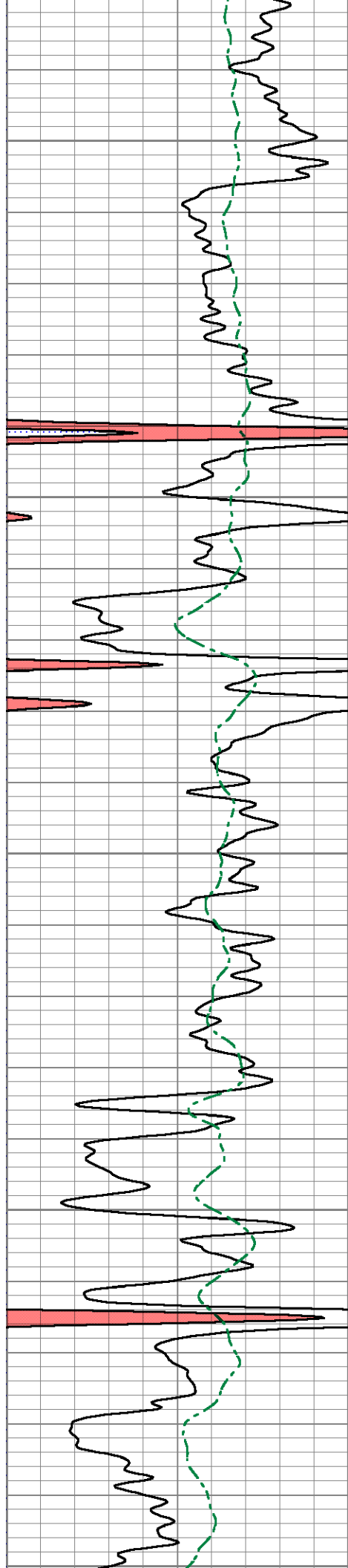
200

250

300

350





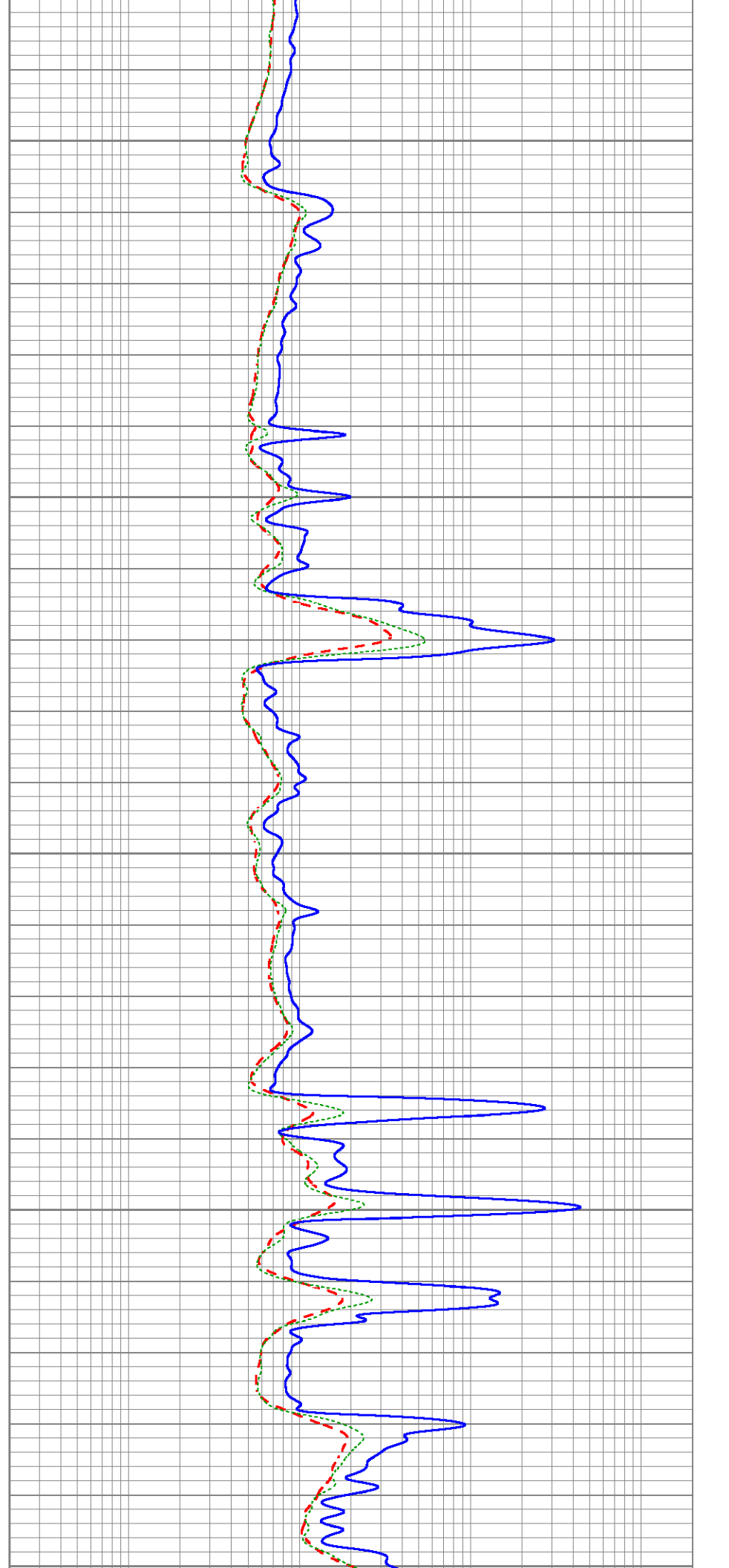
400

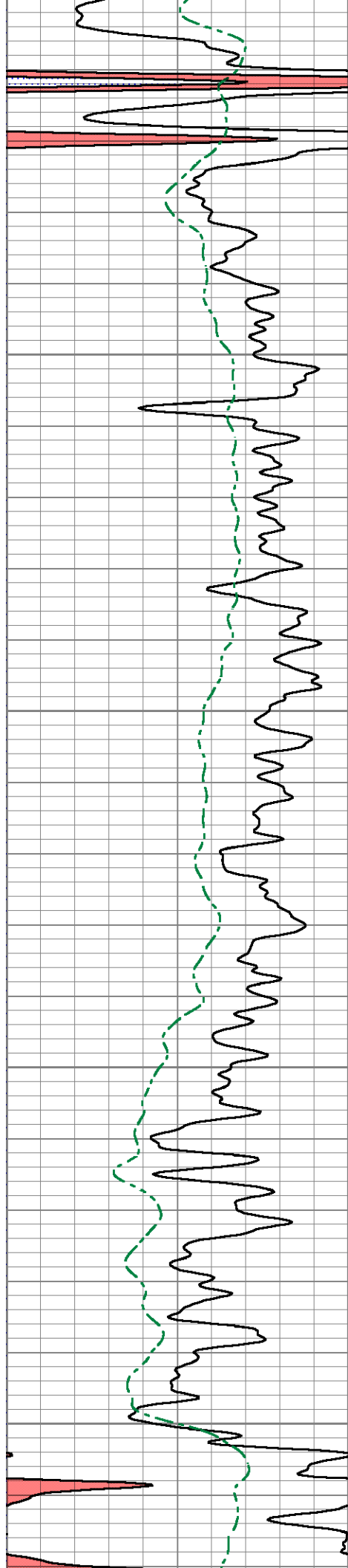
450

500

550

600





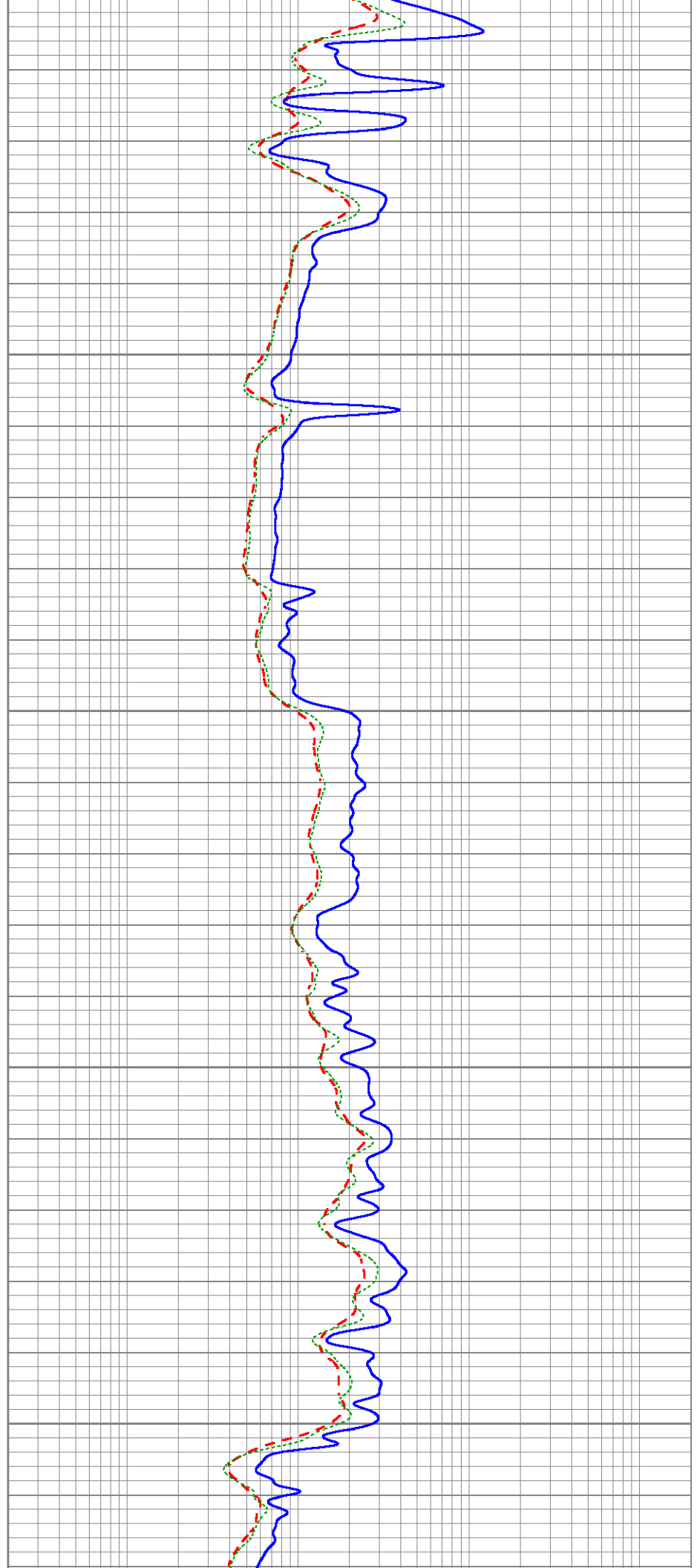
600

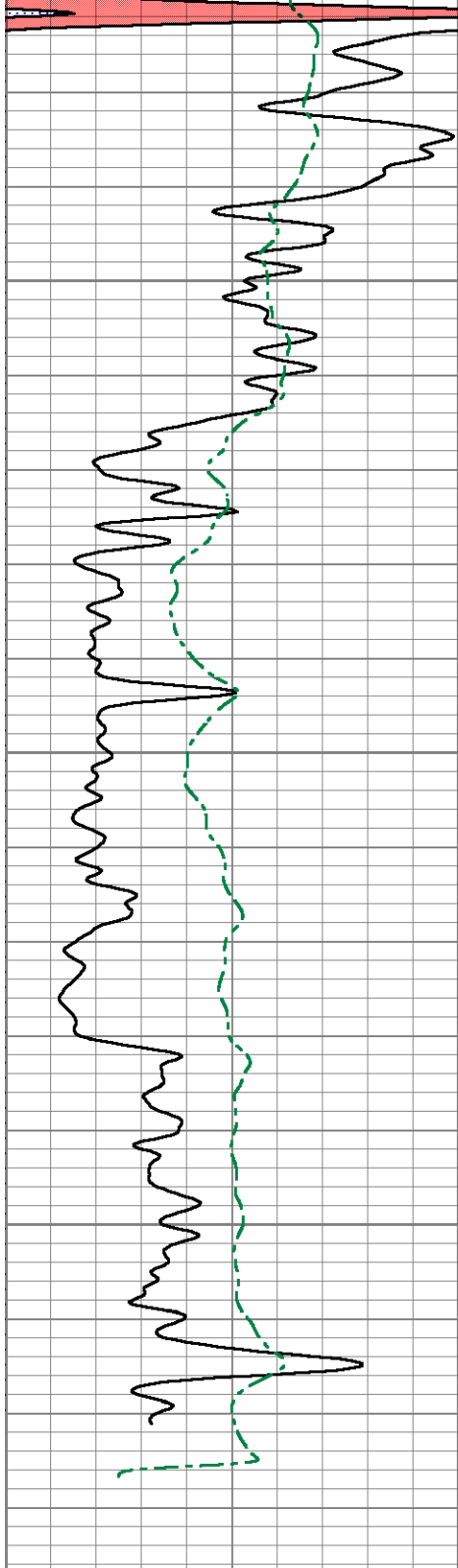
650

700

750

800



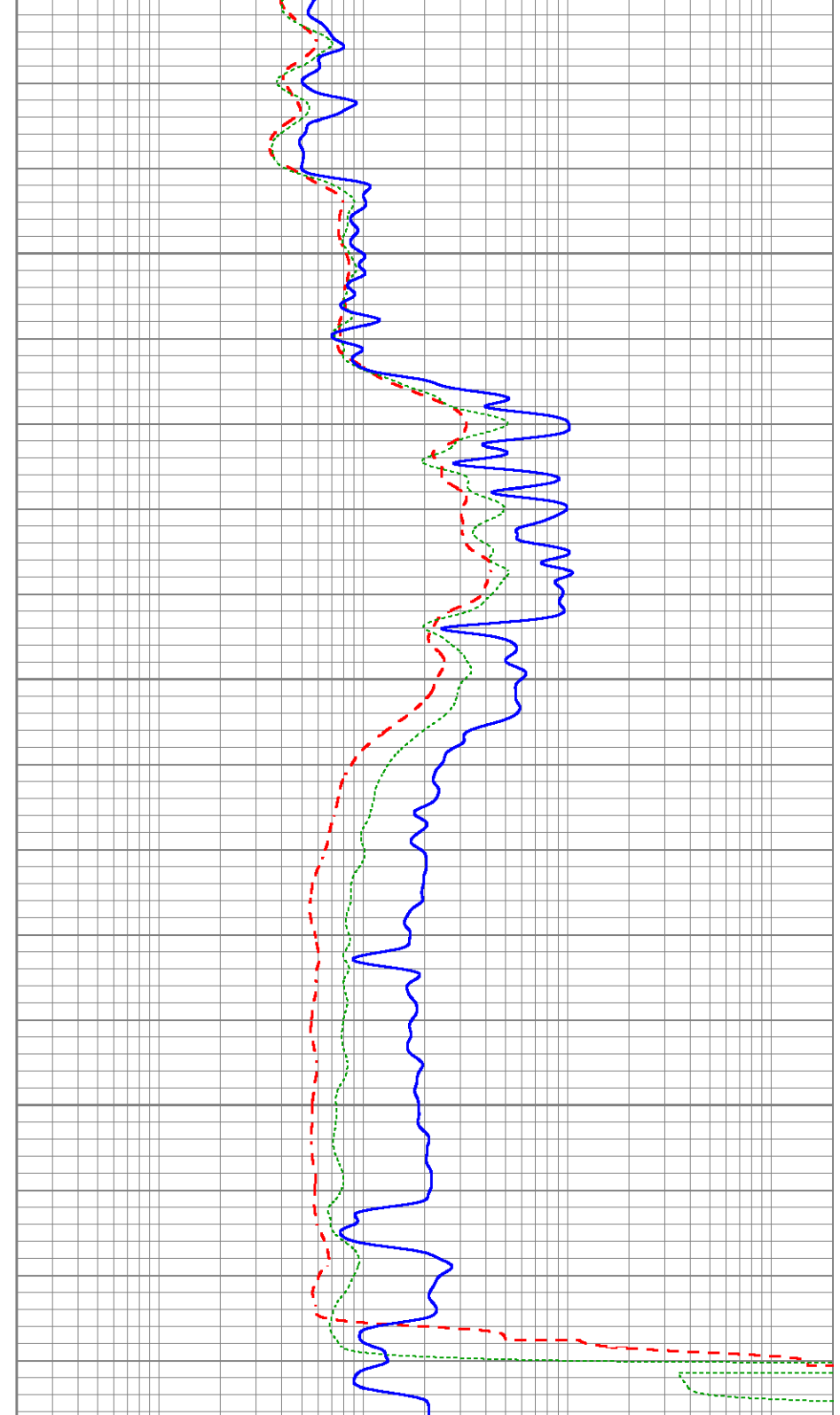


0	Gamma Ray (GAPI)	150
0	SP (mV)	200


850

900

950



0.2	Deep Resistivity (Ohm-m)	2000
0.2	Medium Resistivity (Ohm-m)	2000
0.2	Shallow Resistivity (Ohm-m)	2000

Sensor	Offset (ft)	Schematic	Description	Length (ft)	O.D. (in)	Weight (lb)
			Cable-CableHead Isulation Sub	1.42	3.00	20.00

SP
CILD

10.92
10.92



DIL-GEAR (159)
Dual Induction Electrical Log

21.36

4.00

345.00

CILM

7.00



RLL3

1.67



Dataset: ow1-8653 colt energy.db: field/well/DIL/pass1.1
Total length: 22.78 ft
Total weight: 365.00 lb
O.D.: 4.00 in