



DUAL INDUCTION LL3/GR LOG

Company COLT ENERGY, INC.
Well CLINE # E-1
Field IOLA
County ALLEN
State KANSAS

Company COLT ENERGY, INC.
Well CLINE # E-1
Field IOLA
County ALLEN
State KANSAS

Location: API #: 15-001-30842-0000
SE NE NE NE
525' FNL & 270' FEL
SEC 16 TWP 24S RGE 18E
Permanent Datum GL Elevation 956'
Log Measured From GL
Drilling Measured From GL
Other Services
CDL/SWN
Elevation
K.B. ---
D.F. ---
G.L. 956'

Date	6-24-2014
Run Number	ONE
Depth Driller	990'
Depth Logger	976'
Bottom Logged Interval	974'
Top Log Interval	SURFACE
Casing Driller	8 5/8" @ 20'
Casing Logger	8 5/8" @ 20'
Bit Size	6 3/4"
Type Fluid in Hole	WATER
Density / Viscosity	
pH / Fluid Loss	
Source of Sample	
Rm @ Meas. Temp	
Rmf @ Meas. Temp	
Rmc @ Meas. Temp	
Source of Rmf / Rmc	
Rm @ BHT	
Time Circulation Stopped	
Time Logger on Bottom	
Maximum Recorded Temperature	
Equipment Number	OW2
Location	HOMINY, OK
Recorded By	LOWERY
Witnessed By	MR. ASHLOCK

<<< Fold Here >>>

All interpretations are opinions based on inferences from electrical or other measurements and we cannot and do not guarantee the accuracy or correctness of any interpretation, and we shall not, except in the case of gross or willful negligence on our part, be liable or responsible for any loss, costs, damages, or expenses incurred or sustained by anyone resulting from any interpretation made by any of our officers, agents or employees. These interpretations are also subject to our general terms and conditions set out in our current Price Schedule.

Comments

OW2-8664
CREW : LUNN



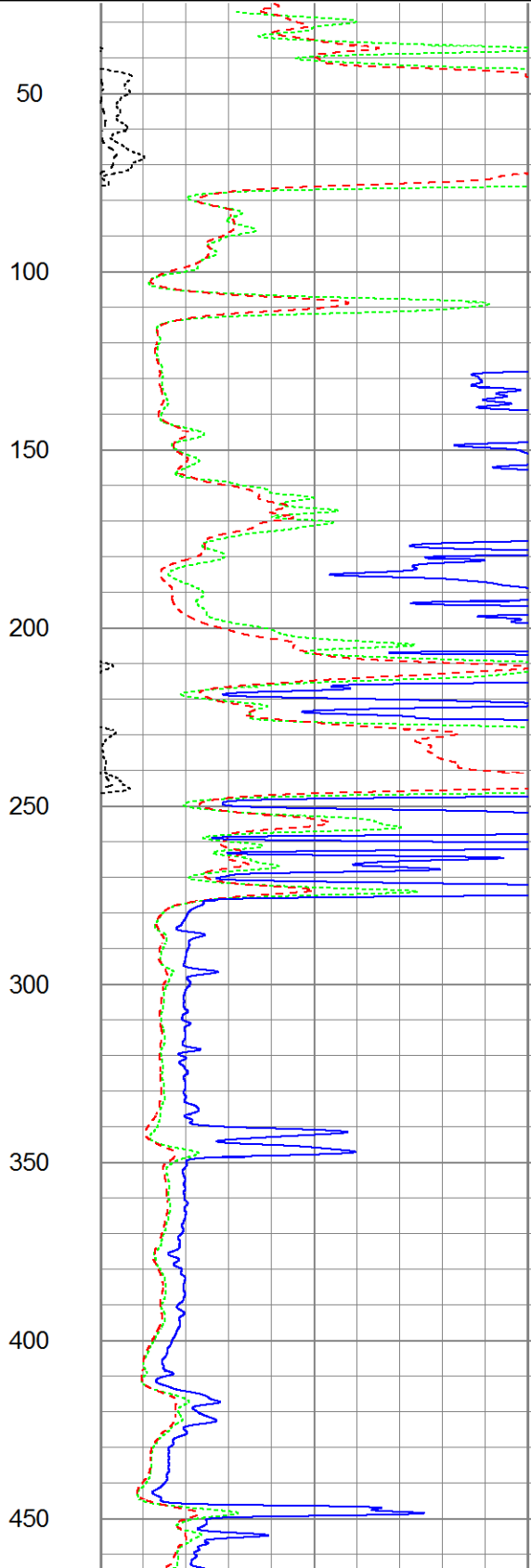
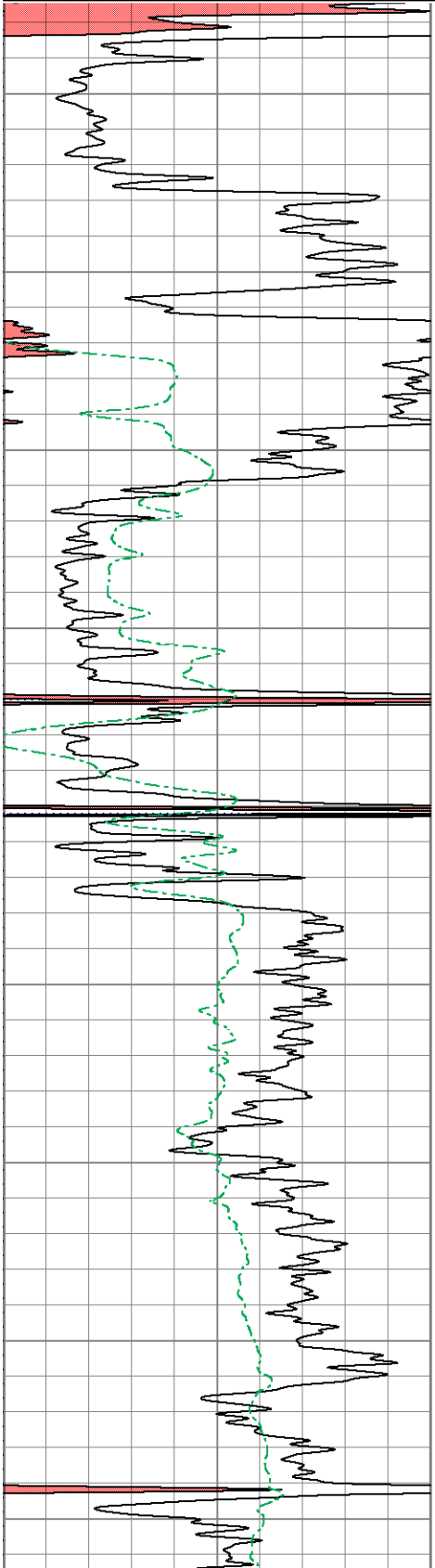
2" DIL SECTION

Database File ow2-8664 colt energy.db
 Dataset Pathname DIL/pass1.4
 Presentation Format dil2mdcol
 Dataset Creation Tue Jun 24 10:14:34 2014
 Charted by Depth in Feet scaled 1:600

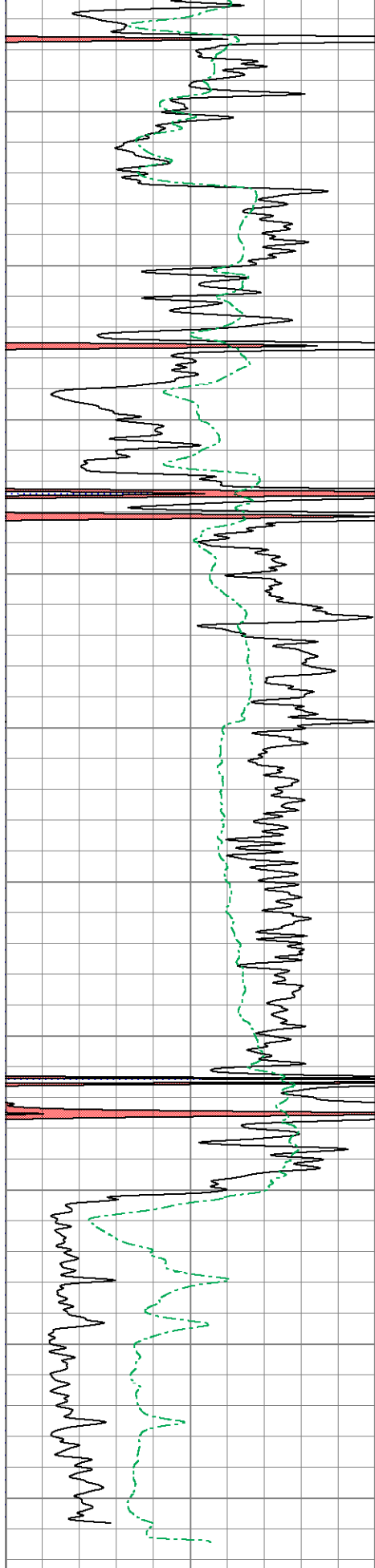
0 GR (GAPI) 150
 0 SP (mV) 200

0 RLL3 (Ohm-m) 50
 0 RILM (Ohm-m) 50
 0 RILD (Ohm-m) 50

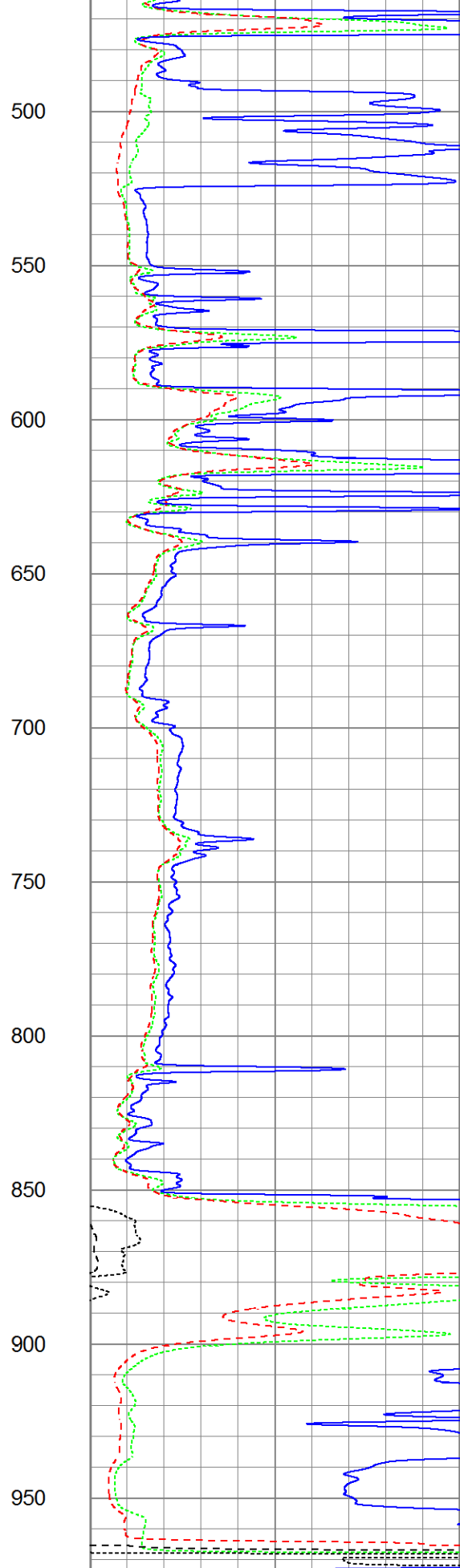
1000 CILD (mmho/m) 0
 1000 CILM (mmho/m) 0



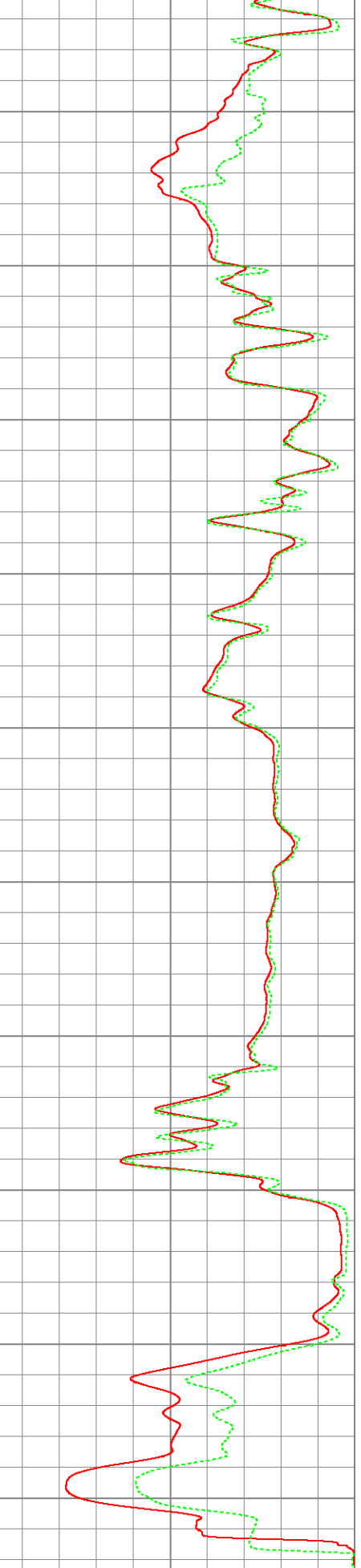
50
 100
 150
 200
 250
 300
 350
 400
 450



0	GR (GAPI)	150
0	SP (mV)	200



0	RLL3 (Ohm-m)	50
0	RILM (Ohm-m)	50
0	RILD (Ohm-m)	50



1000	CILD (mmho/m)	0
1000	CILM (mmho/m)	0

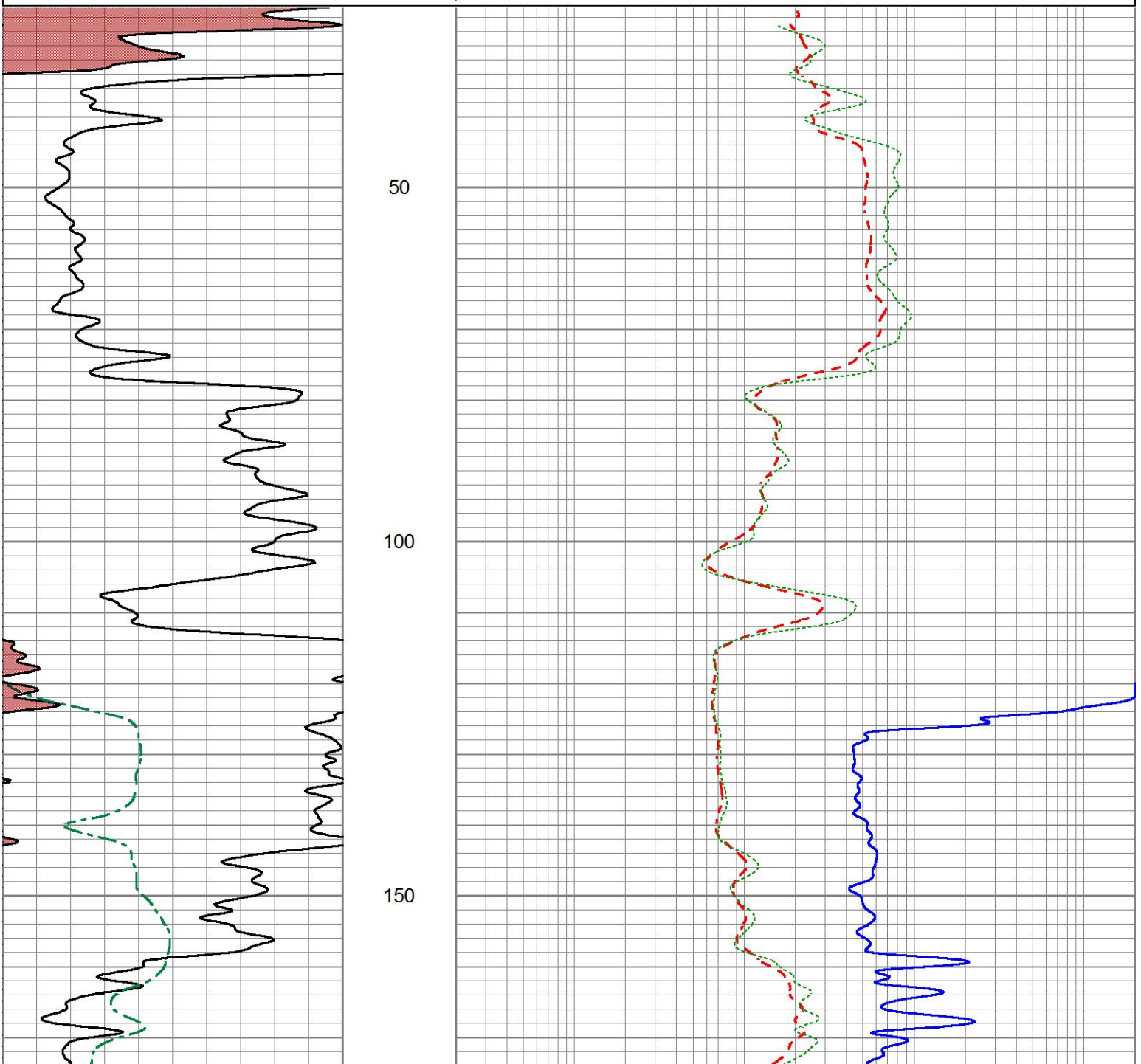


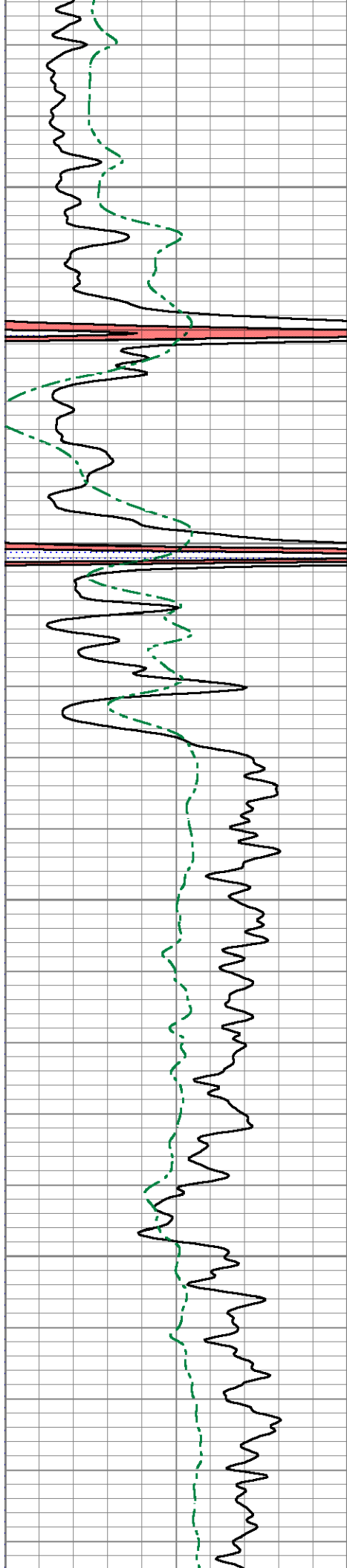
5" DIL SECTION

Database File ow2-8664 colt energy.db
 Dataset Pathname DIL/pass1.3
 Presentation Format dil5mdcol
 Dataset Creation Tue Jun 24 10:12:56 2014
 Charted by Depth in Feet scaled 1:240

0	Gamma Ray (GAPI)	150
0	SP (mV)	200

0.2	Deep Resistivity (Ohm-m)	2000
0.2	Medium Resistivity (Ohm-m)	2000
0.2	Shallow Resistivity (Ohm-m)	2000



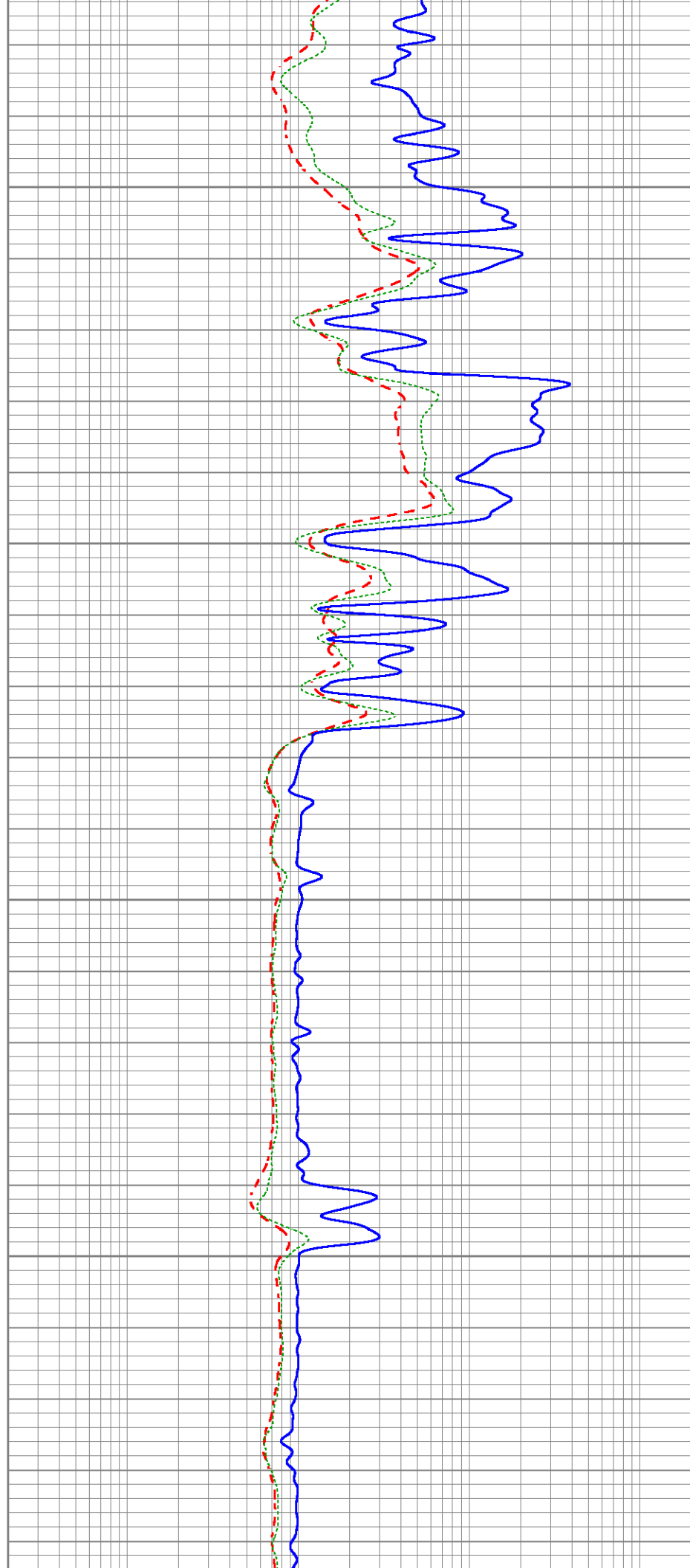


200

250

300

350





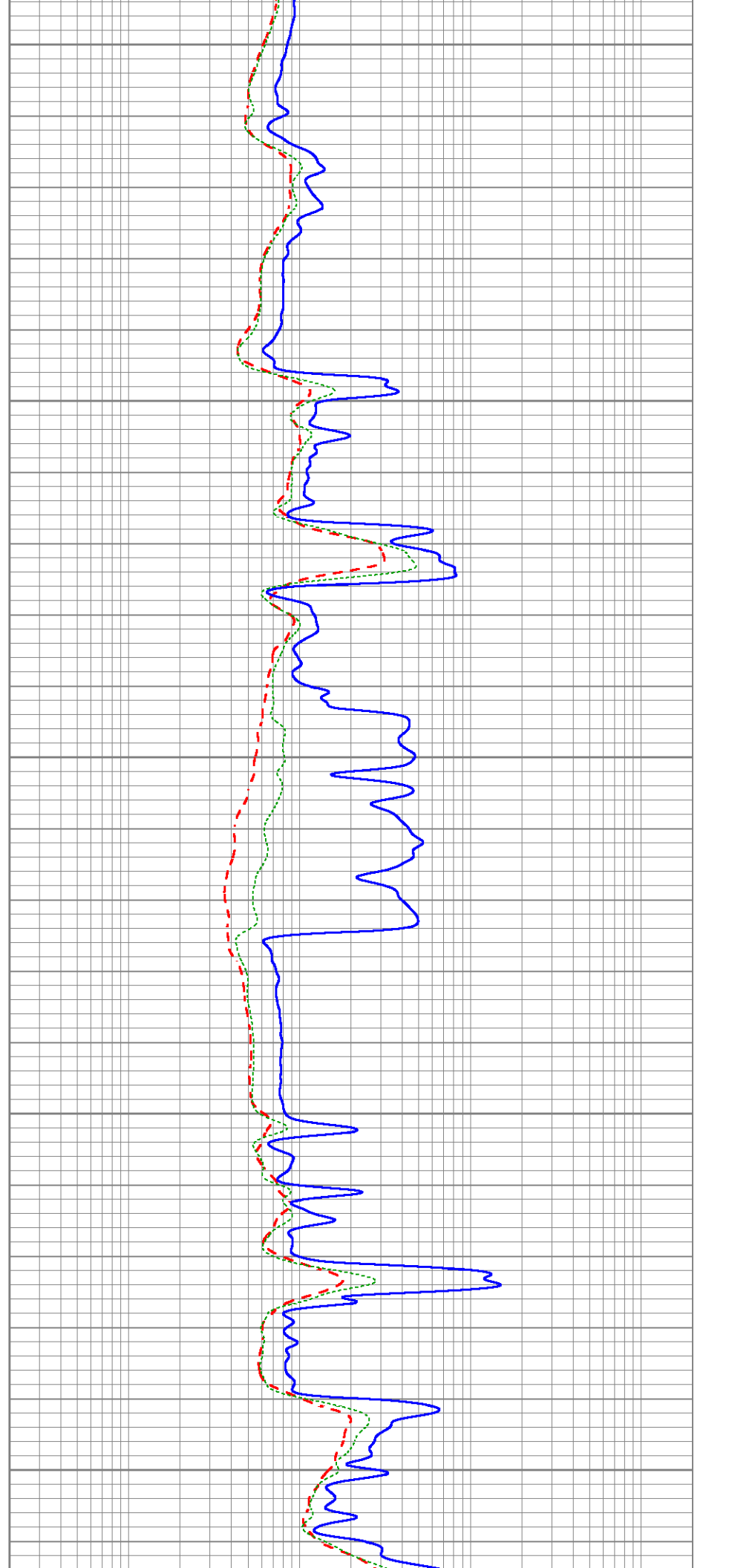
400

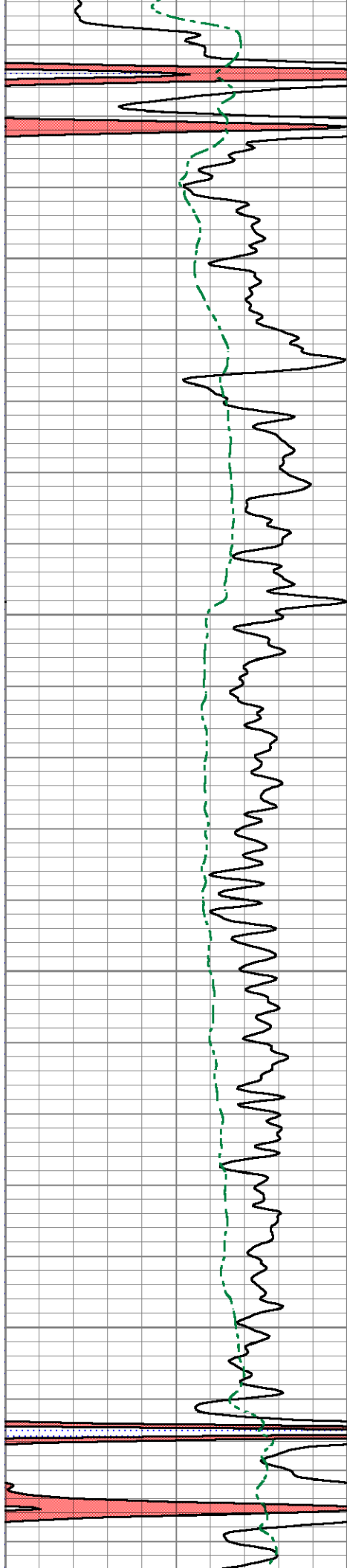
450

500

550

600



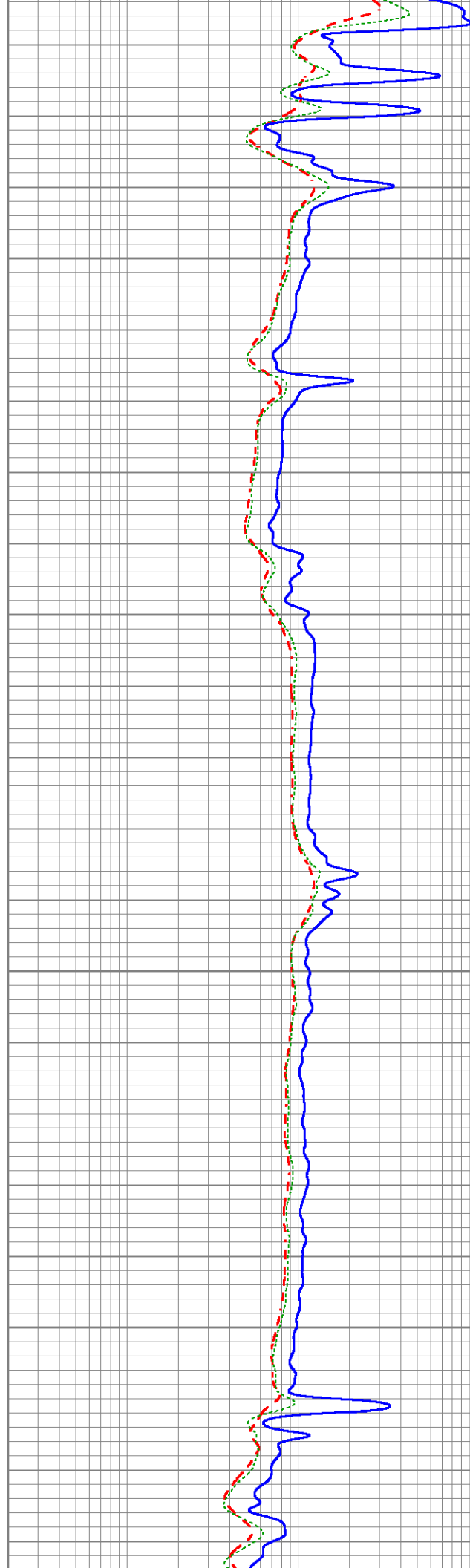


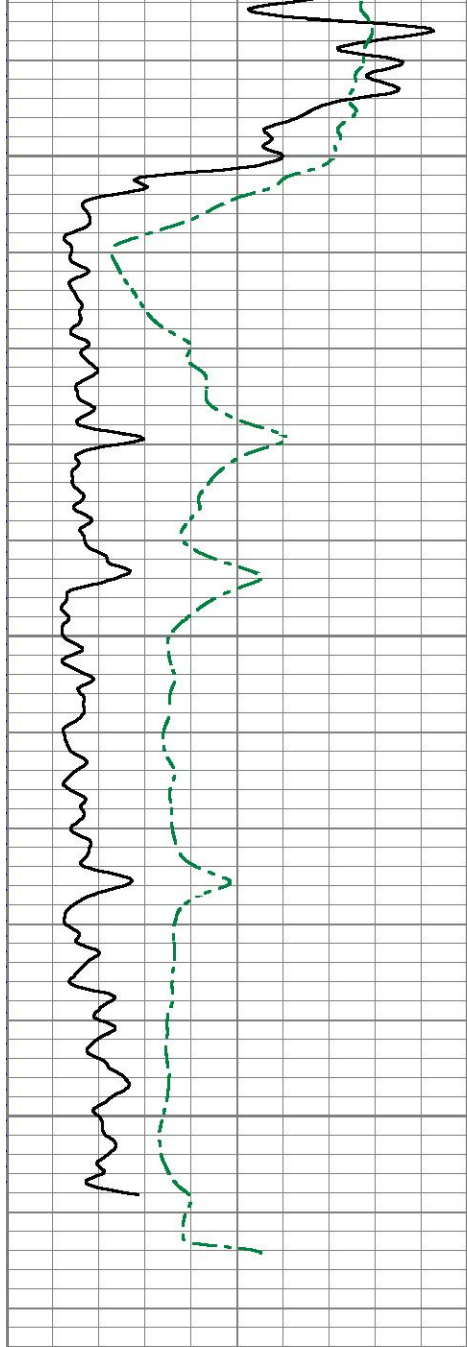
650

700

750

800



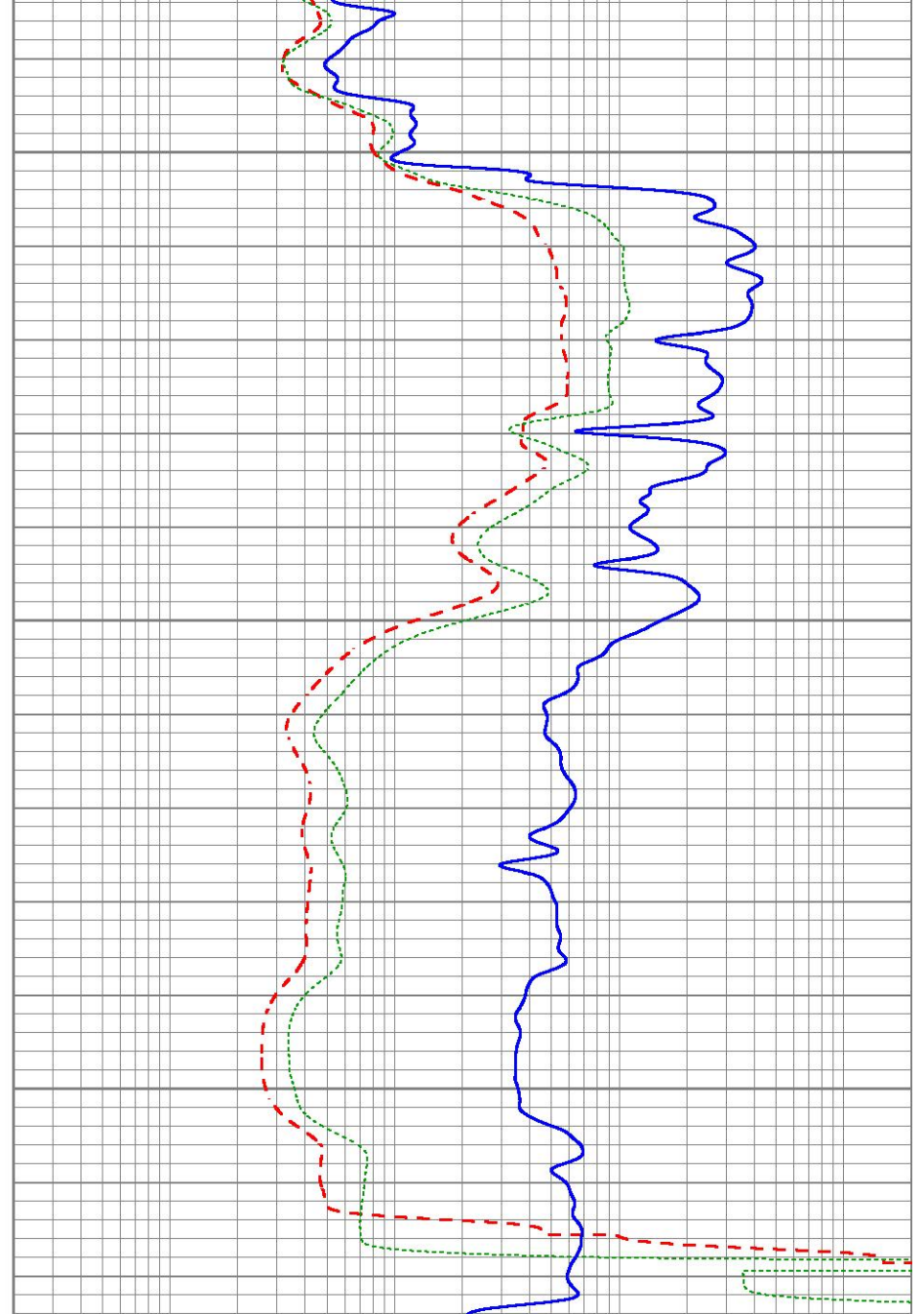


850

900

950

0	Gamma Ray (GAPI)	150
0	SP (mV)	200



0.2	Deep Resistivity (Ohm-m)	2000
0.2	Medium Resistivity (Ohm-m)	2000
0.2	Shallow Resistivity (Ohm-m)	2000

Sensor	Offset (ft)	Schematic	Description	Length (ft)	O.D. (in)	Weight (lb)
			Cable-CableHead Isulation Sub	1.42	3.00	20.00

SP CILD	10.92 10.92		DIL-GEAR (159) Dual Induction Electrical Log	21.36	4.00	345.00
CILM	7.00					
RLL3	1.67					

Dataset: ow2-8664 colt energy.db: field/well/DIL/pass1 Total length: 22.78 ft Total weight: 365.00 lb O.D.: 4.00 in
