



**DUAL INDUCTION  
LL3/GR LOG**

Company **COLT ENERGY, INC.**  
 Well **CLINE # FG-3**  
 Field **IOLA**  
 County **ALLEN** State **KANSAS**

Location: **API # : 15-001-30845-0000**  
**NE/4**  
**780' FNL & 1030' FEL**  
**SEC 16 TWP 24S RGE 18E**  
 Permanent Datum **GL** Elevation **953'**  
 Log Measured From **GL**  
 Drilling Measured From **GL**  
 Other Services **CDL/SWN**  
 Elevation **K.B. ---  
D.F. ---  
G.L. 953'**

Date	7-02-2014
Run Number	ONE
Depth Driller	1020'
Depth Logger	1012'
Bottom Logged Interval	1010'
Top Log Interval	SURFACE
Casing Driller	8 5/8" @ 24'
Casing Logger	8 5/8" @ 24'
Bit Size	6 3/4"
Type Fluid in Hole	WATER
Density / Viscosity	
pH / Fluid Loss	
Source of Sample	
Rm @ Meas. Temp	
Rmf @ Meas. Temp	
Rmc @ Meas. Temp	
Source of Rmf / Rmc	
Rm @ BHT	
Time Circulation Stopped	
Time Logger on Bottom	
Maximum Recorded Temperature	
Equipment Number	OW2
Location	HOMINY, OK
Recorded By	LOWERY
Witnessed By	MR. ASHLOCK

<<< Fold Here >>>

All interpretations are opinions based on inferences from electrical or other measurements and we cannot and do not guarantee the accuracy or correctness of any interpretation, and we shall not, except in the case of gross or willful negligence on our part, be liable or responsible for any loss, costs, damages, or expenses incurred or sustained by anyone resulting from any interpretation made by any of our officers, agents or employees. These interpretations are also subject to our general terms and conditions set out in our current Price Schedule.

**Comments**

**OW2-8674**  
**CREW : SHAMBLES**



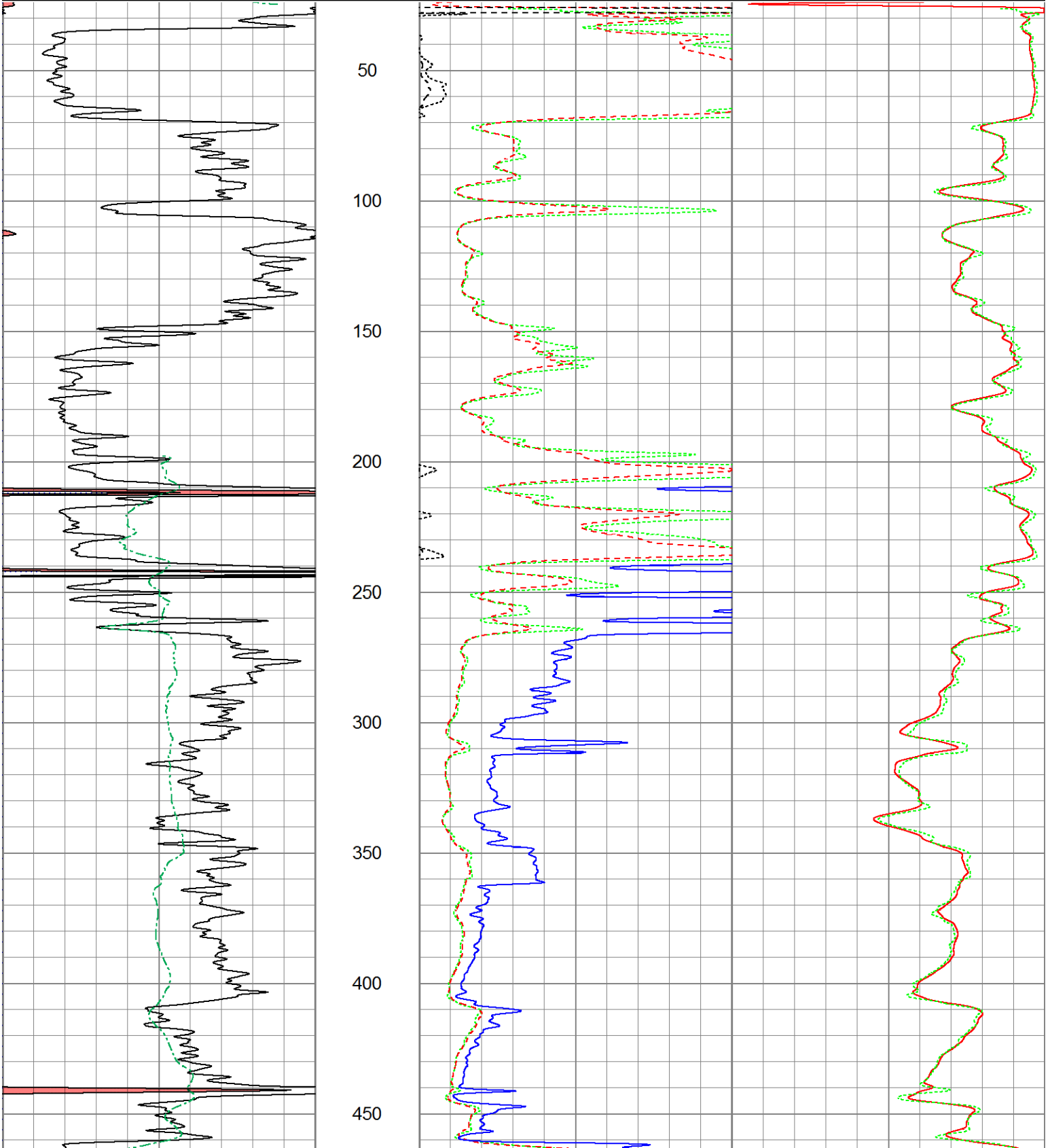
**2" DIL SECTION**

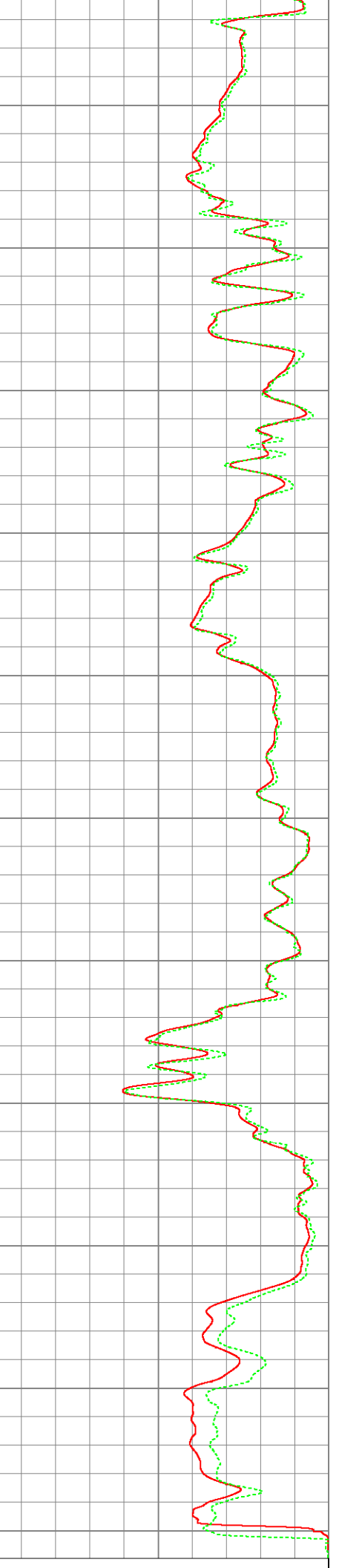
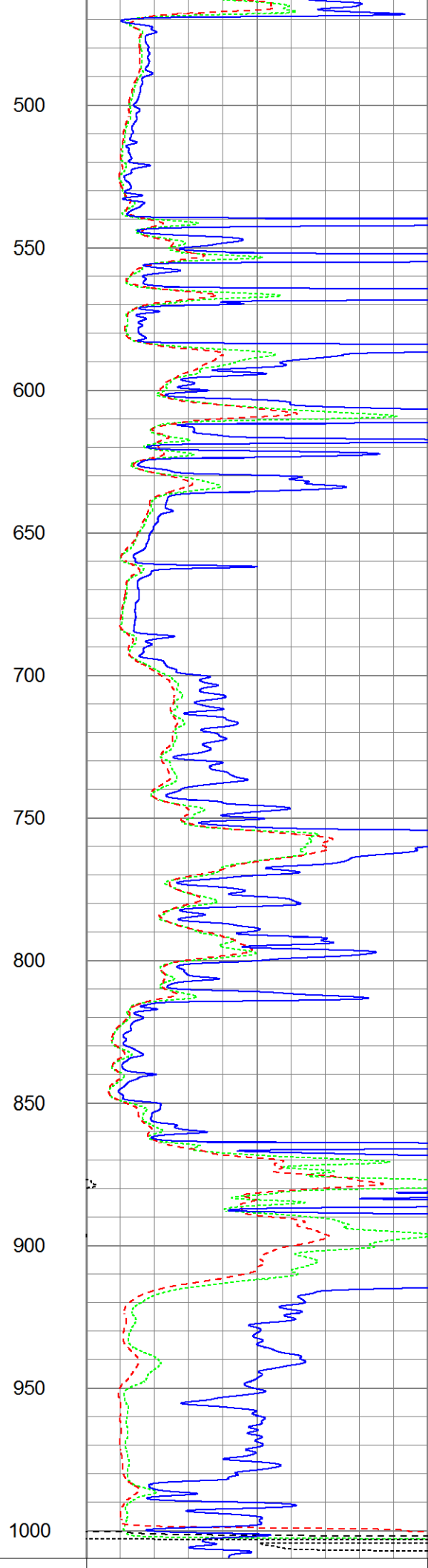
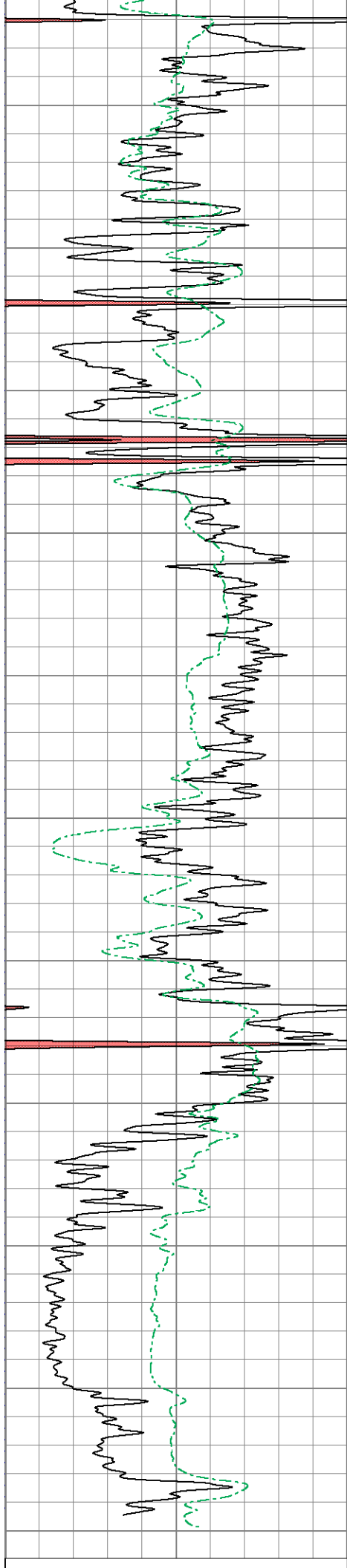
Database File ow2-8674 colt energy.db  
 Dataset Pathname DIL/pass1.3  
 Presentation Format dil2mdcol  
 Dataset Creation Wed Jul 02 09:54:54 2014  
 Charted by Depth in Feet scaled 1:600

0 GR (GAPI) 150  
 0 SP (mV) 200

0 RLL3 (Ohm-m) 50  
 0 RILM (Ohm-m) 50  
 0 RILD (Ohm-m) 50

1000 CILD (mmho/m) 0  
 1000 CILM (mmho/m) 0





0	GR (GAPI)	150
0	SP (mV)	200

0	RLL3 (Ohm-m)	50
0	RILM (Ohm-m)	50
0	RILD (Ohm-m)	50
1000	CILD (mmho/m)	0
1000	CILM (mmho/m)	0

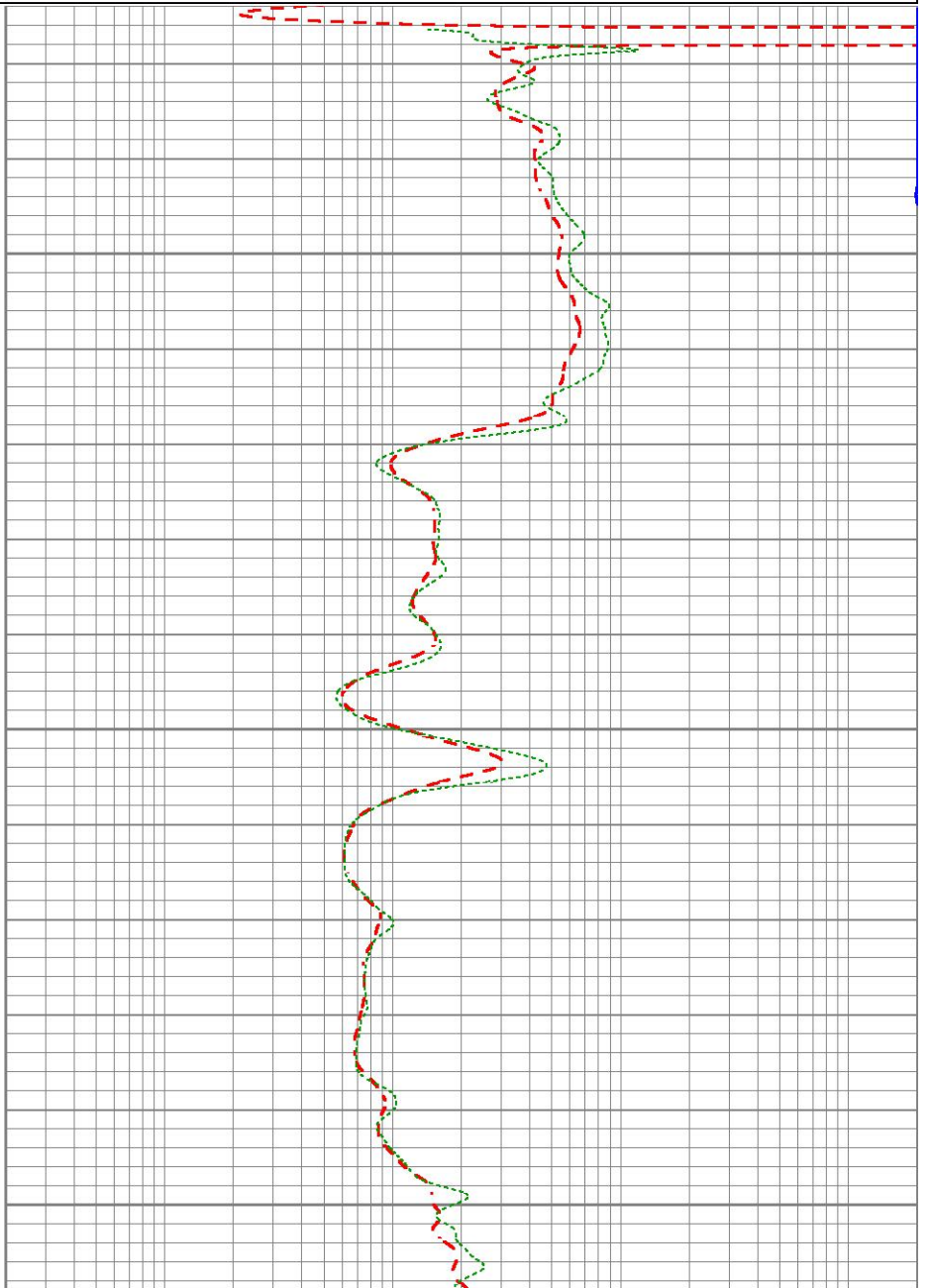
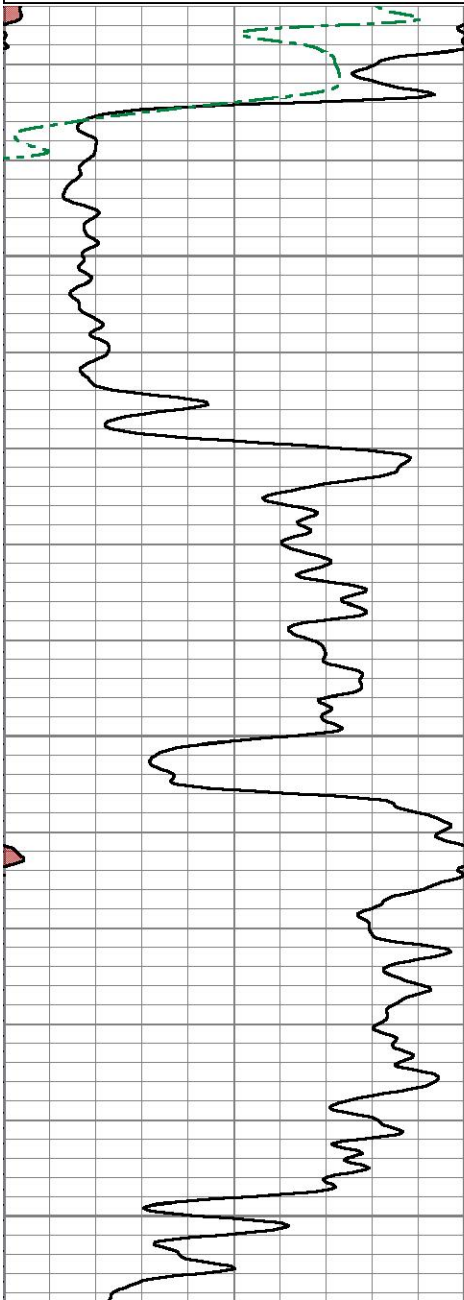


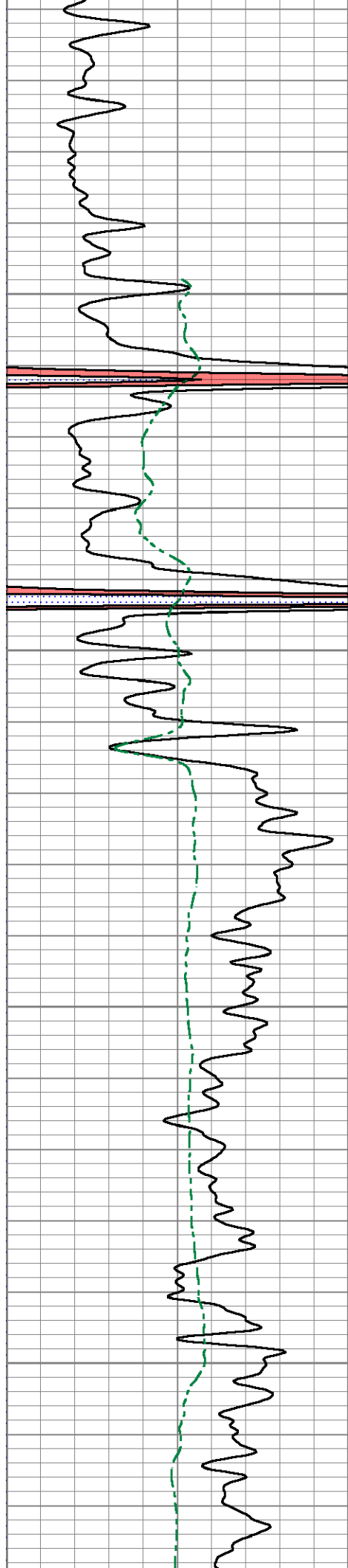
# 5" DIL SECTION

Database File ow2-8674 colt energy.db  
 Dataset Pathname DIL/pass1.2  
 Presentation Format dil5mdcol  
 Dataset Creation Wed Jul 02 09:54:41 2014  
 Charted by Depth in Feet scaled 1:240

0	Gamma Ray (GAPI)	150
0	SP (mV)	200

0.2	Deep Resistivity (Ohm-m)	2000
0.2	Medium Resistivity (Ohm-m)	2000
0.2	Shallow Resistivity (Ohm-m)	2000



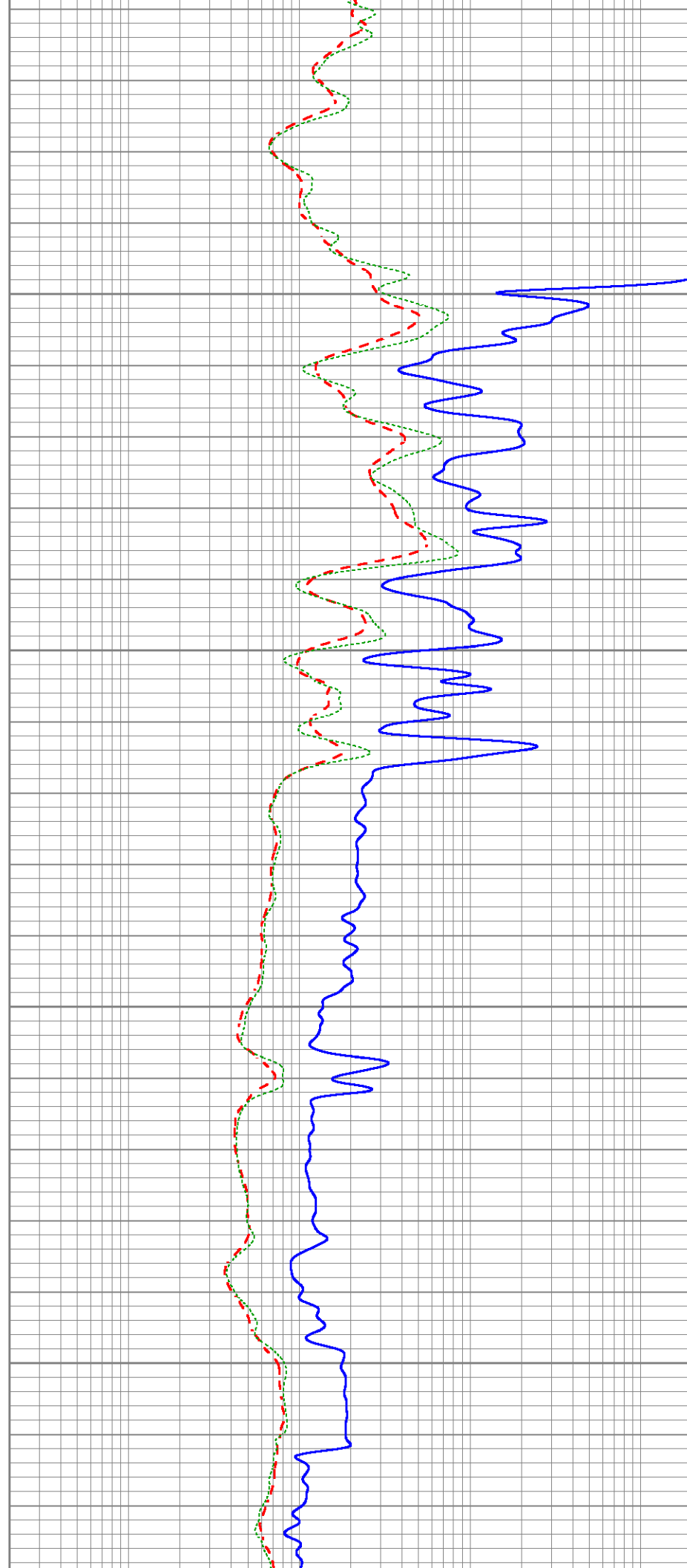


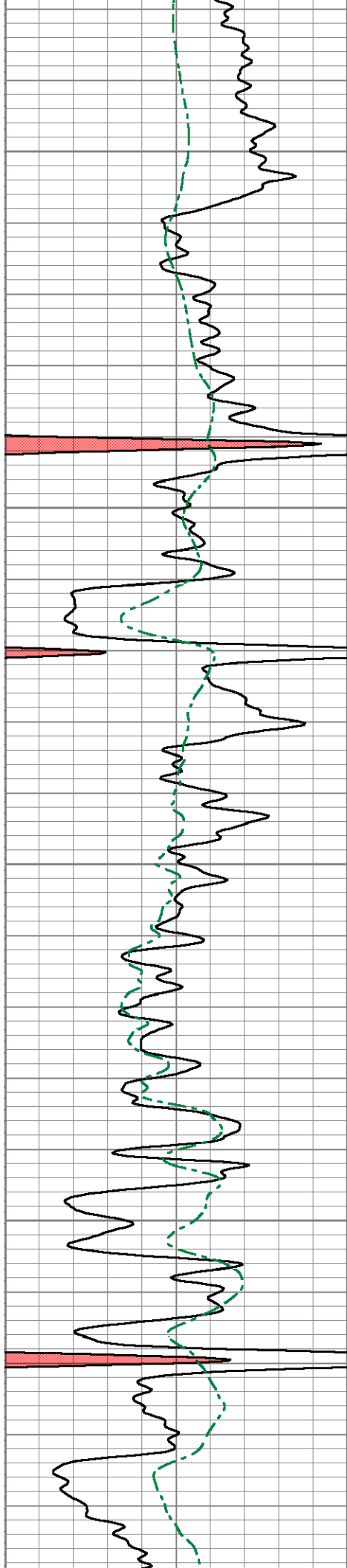
200

250

300

350



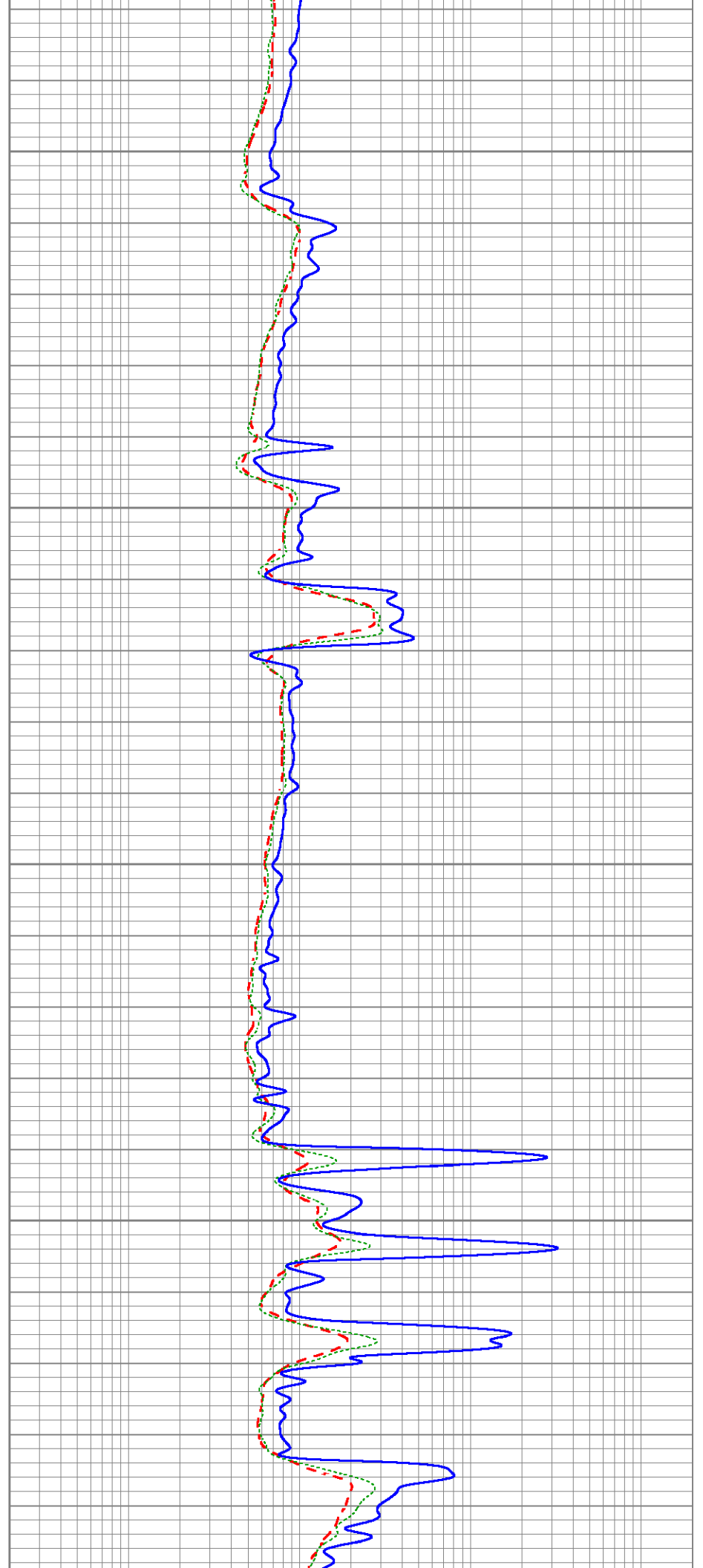


400

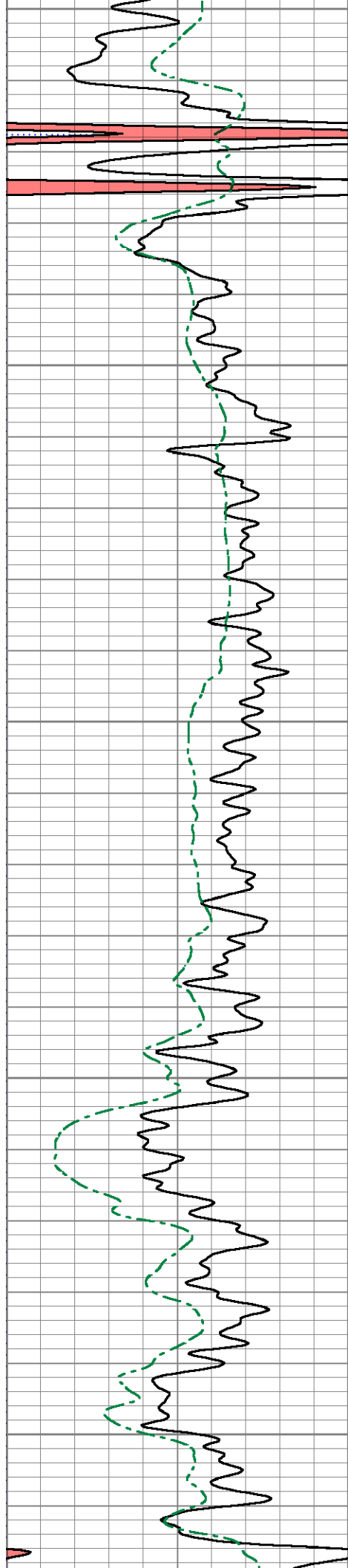
450

500

550







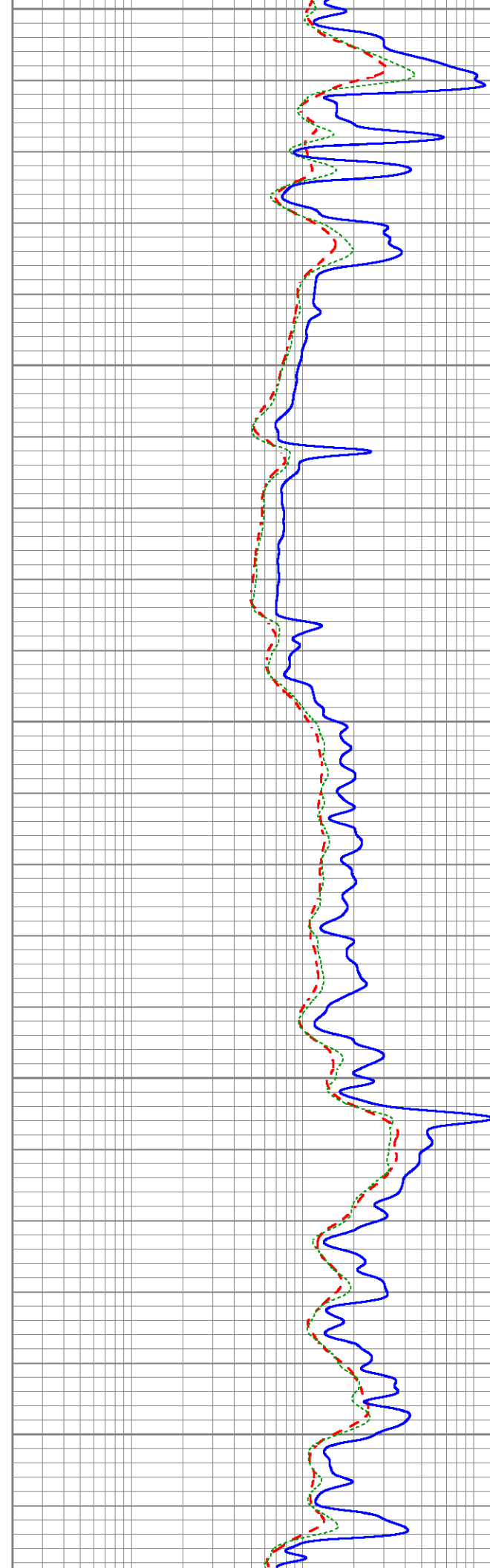
600

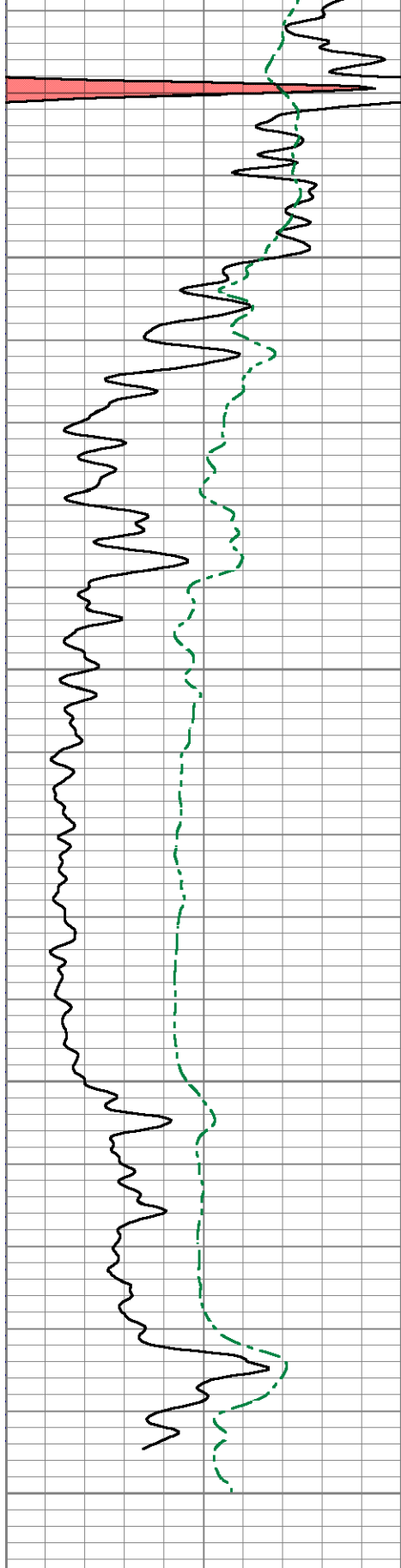
650

700

750

800





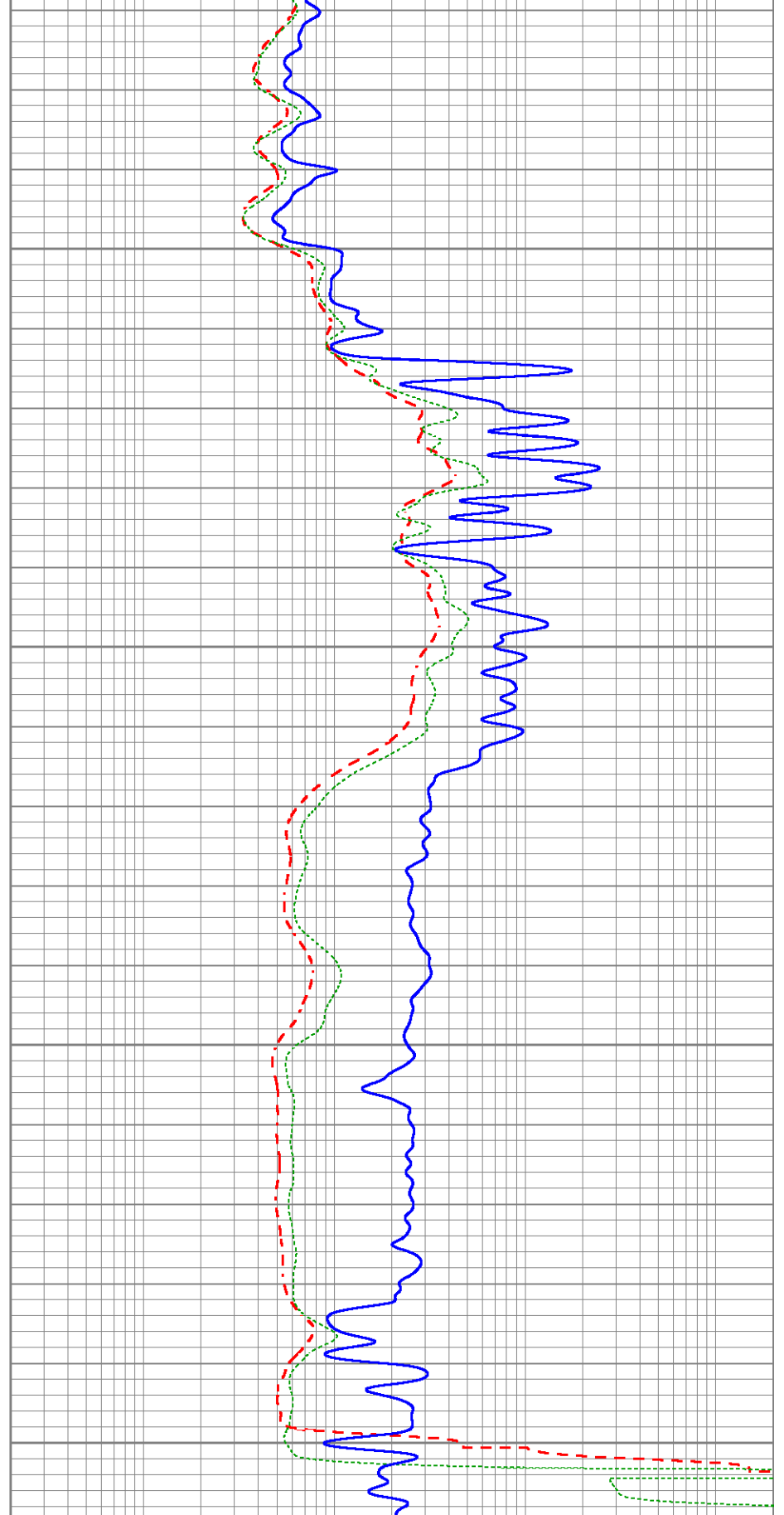
850

900

950

1000

0	Gamma Ray (GAPI)	150
0	SP (mV)	200



0.2	Deep Resistivity (Ohm-m)	2000
0.2	Medium Resistivity (Ohm-m)	2000
0.2	Shallow Resistivity (Ohm-m)	2000

Sensor	Offset (ft)	Schematic	Description	Length (ft)	O.D. (in)	Weight (lb)



			Cable-CableHead Isulation Sub	1.42	3.00	20.00
SP CILD	10.92 10.92		DIL-GEAR (159) Dual Induction Electrical Log	21.36	4.00	345.00
CILM	7.00					
RLL3	1.67					

Dataset: ow2-8674 colt energy.db: field/well/DIL/pass1  
 Total length: 22.78 ft  
 Total weight: 365.00 lb  
 O.D.: 4.00 in