



Pioneer Energy Services

Dual Compensated Porosity Log

API No. 15-007-24200-00-00

Company **N-10 Exploration, LLC**
 Well **Medicine River Ranch "A" #3**
 Field **Landis**
 County **Barber** State **Kansas**

Location **W/2 SE NE**
1980' FNL / 990' FEL

Sec: **21** Twp: **34S** Rge: **11W**

Other Services **DIL**

Permanent Datum **Ground Level** Elevation **1328**
 Log Measured From **Kelly Bushing** 10 Ft. Above Perm. Datum
 Drilling Measured From **Kelly Bushing**

K.B. 1338
 D.F. G.L. 1328

Date **8/1/2014**

Run Number **One**

Type Log **CNL / CDL**

Depth Driller **5062**

Depth Logger **5074**

Bottom Logged Interval **5053**

Top Logged Interval **3400**

Type Fluid In Hole **Chemical**

Salinity, PPM CL **3000**

Density **9.5**

Level **Full**

Max. Rec. Temp. F **127**

Operating Rig Time **4 Hours**

Equipment -- Location **17 Hays**

Recorded By **R. Barnhart**

Witnessed By **Tim Pierce**

| Borehole Record | | Casing Record | | | | |
|-----------------|----------|---------------|------|----------|------|-----|
| Run No | Bit From | To | Size | Wgt. 23# | From | To |
| One | 12.25 | 00 | 251 | 8.625 | 00 | 251 |
| Two | 7.875 | 251 | TD | | | |
| | | | | | | |
| | | | | | | |
| | | | | | | |
| | | | | | | |
| | | | | | | |
| | | | | | | |
| | | | | | | |

<<< Fold Here >>>

All interpretations are opinions based on inferences from electrical or other measurements and we cannot and do not guarantee the accuracy or correctness of any interpretation, and we shall not, except in the case of gross or willful negligence on our part, be liable or responsible for any loss, costs, damages, or expenses incurred or sustained by anyone resulting from any interpretation made by any of our officers, agents or employees. These interpretations are also subject to our general terms and conditions set out in our current Price Schedule.

Comments

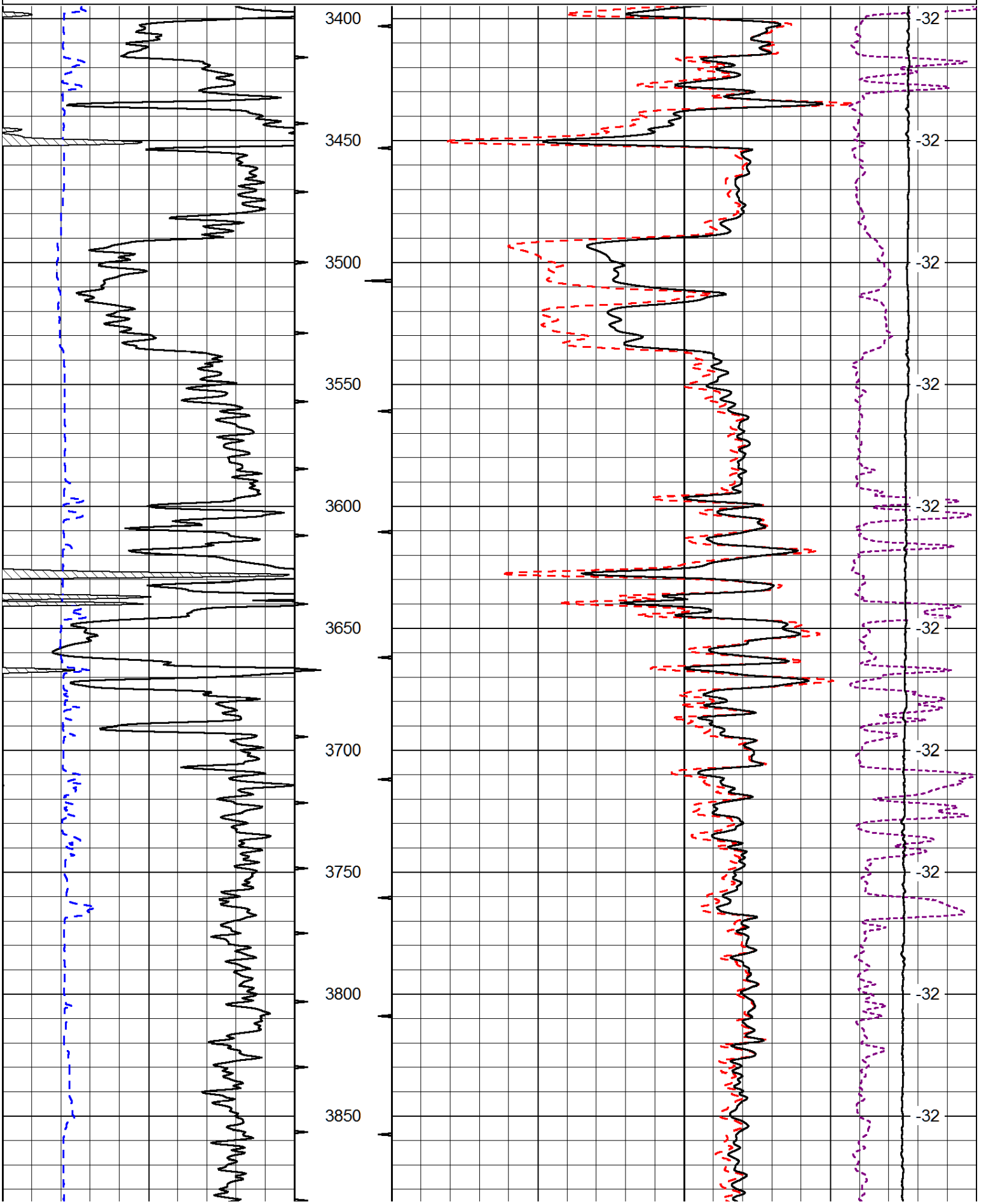
Thank you for using Log-Tech, Inc.
 (785) 625-3858

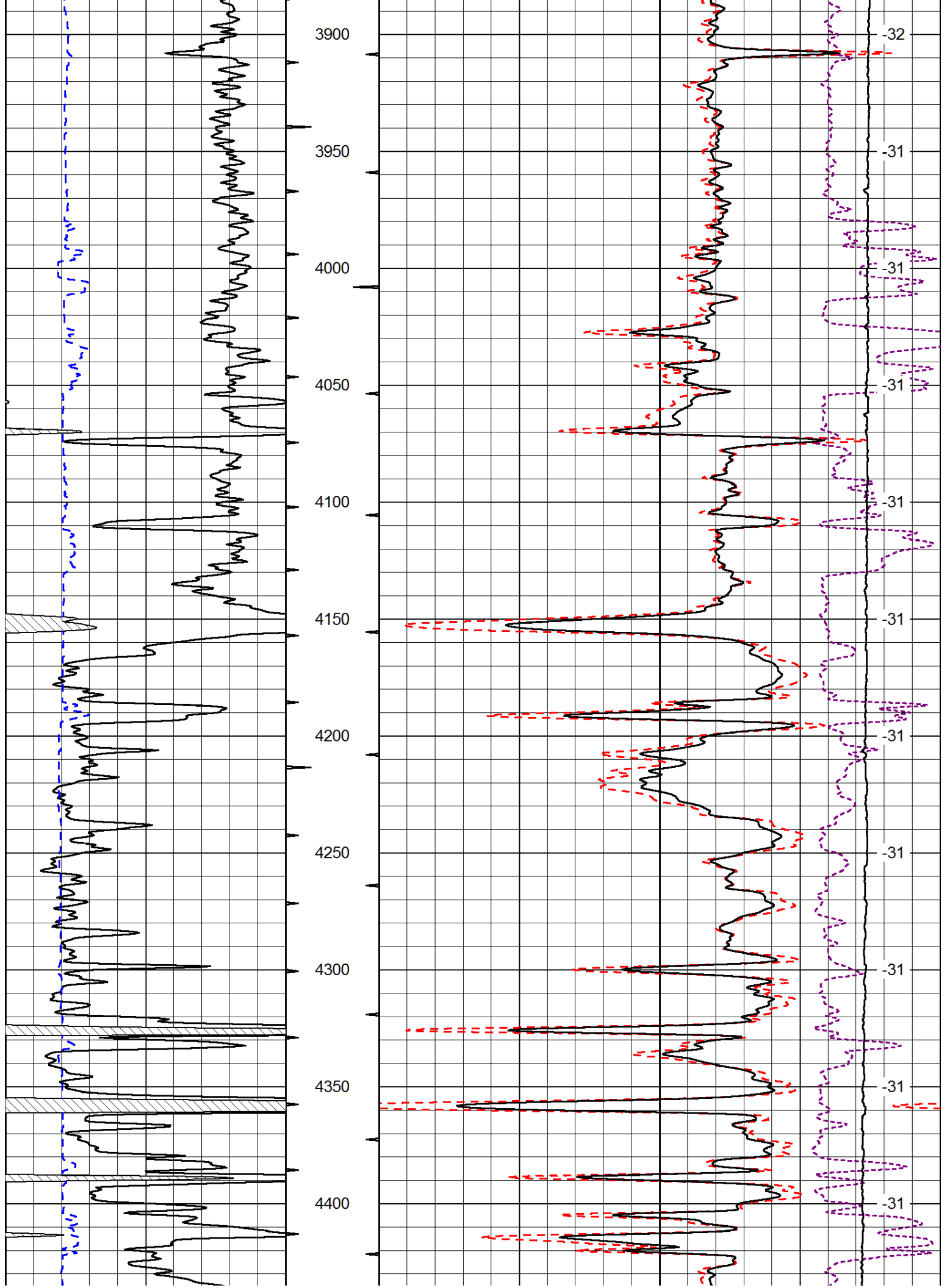
Medicine Lodge, KS:
 S to Gerlane, E to Bethel, S to Angus, 1 1/2W to a fork, R thru CG,
 1/8 to a fork, L 1m to rig

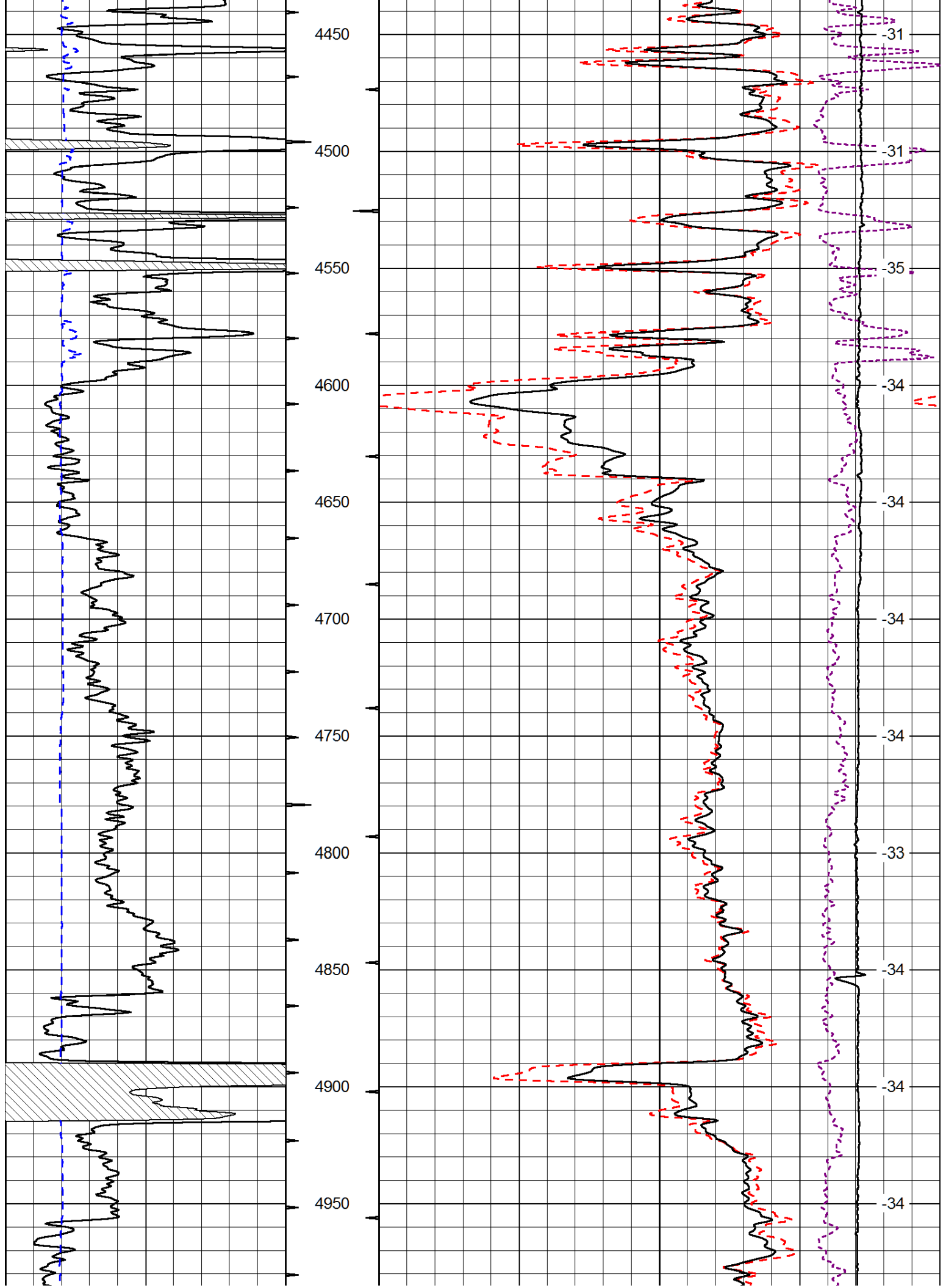
Database File: n10_mhd.db
 Dataset Pathname: dil/n10main
 Presentation Format: cdl
 Dataset Creation: Fri Aug 01 05:18:02 2014
 Charted by: Depth in Feet scaled 1:600

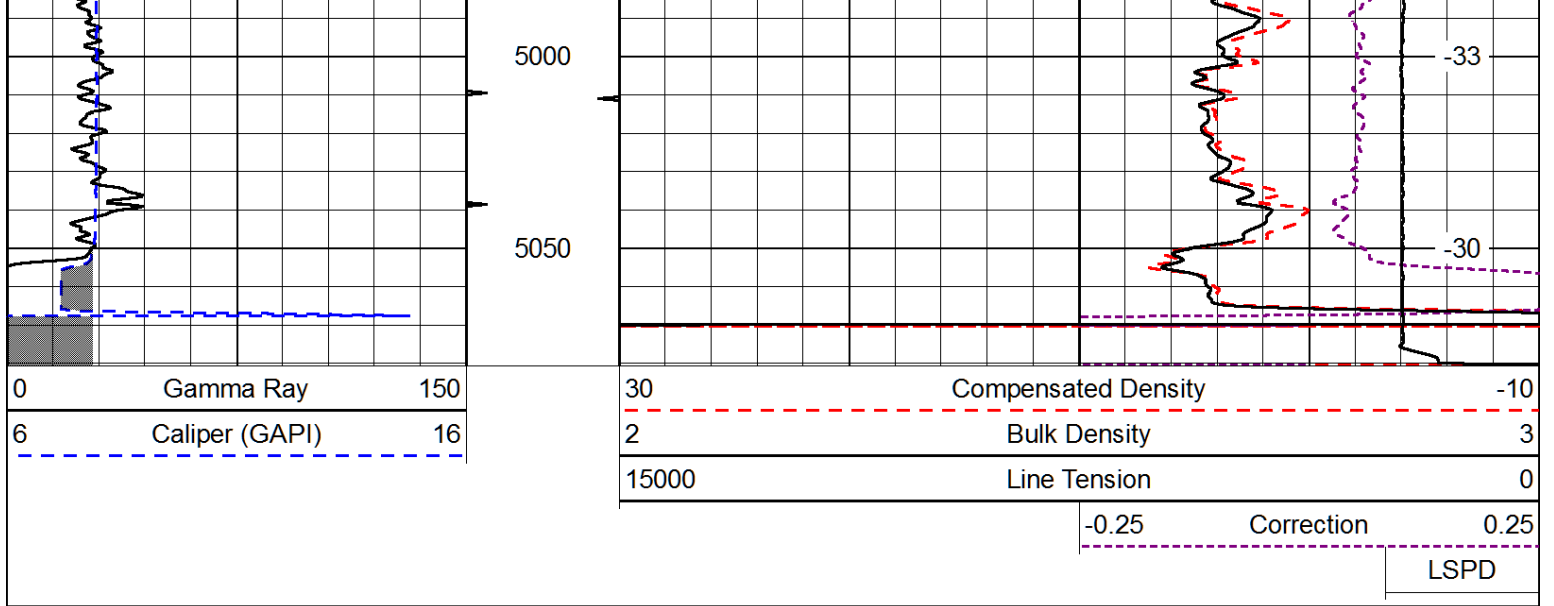
0 Gamma Ray 150
6 Caliper (GAPI) 16

30 Compensated Density -10
2 Bulk Density 3
15000 Line Tension 0
-0.25 Correction 0.25
LSPD

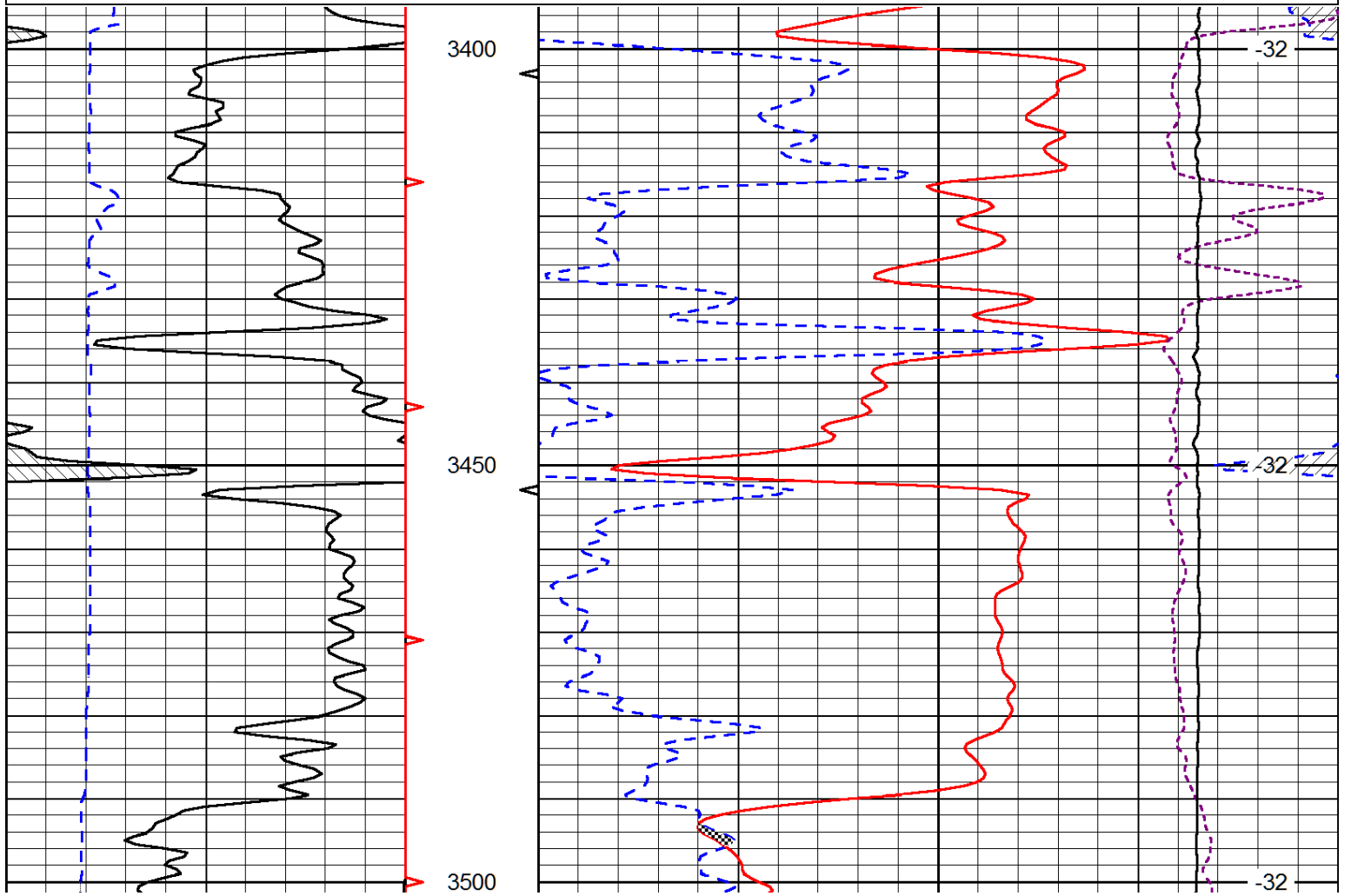
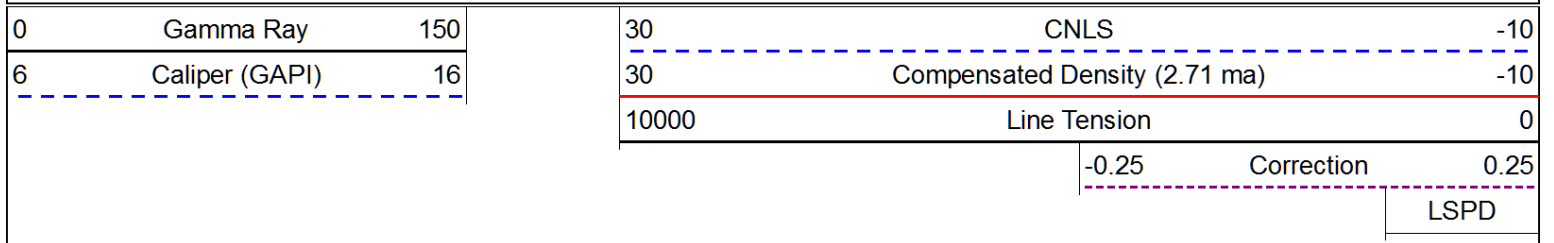


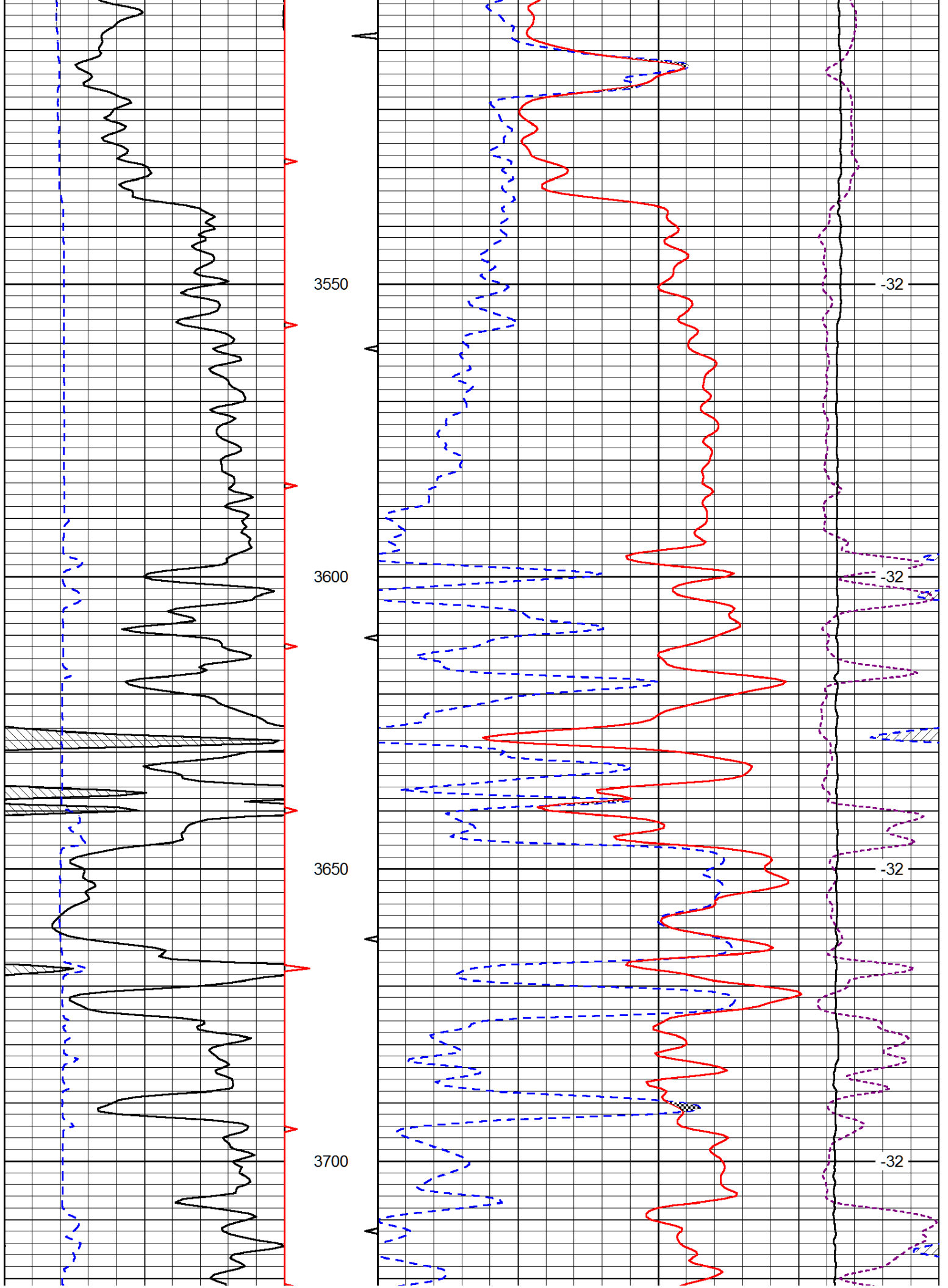


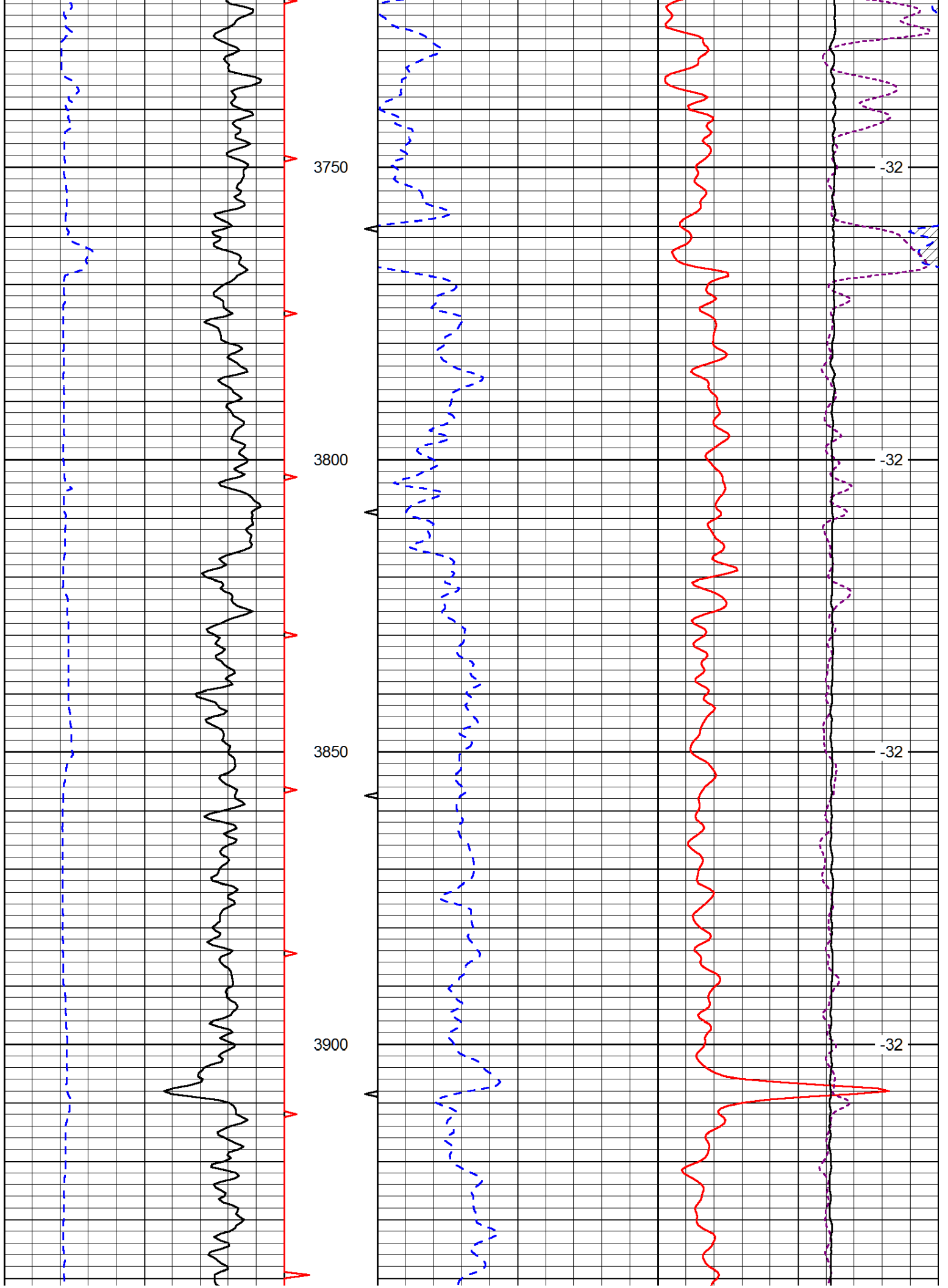


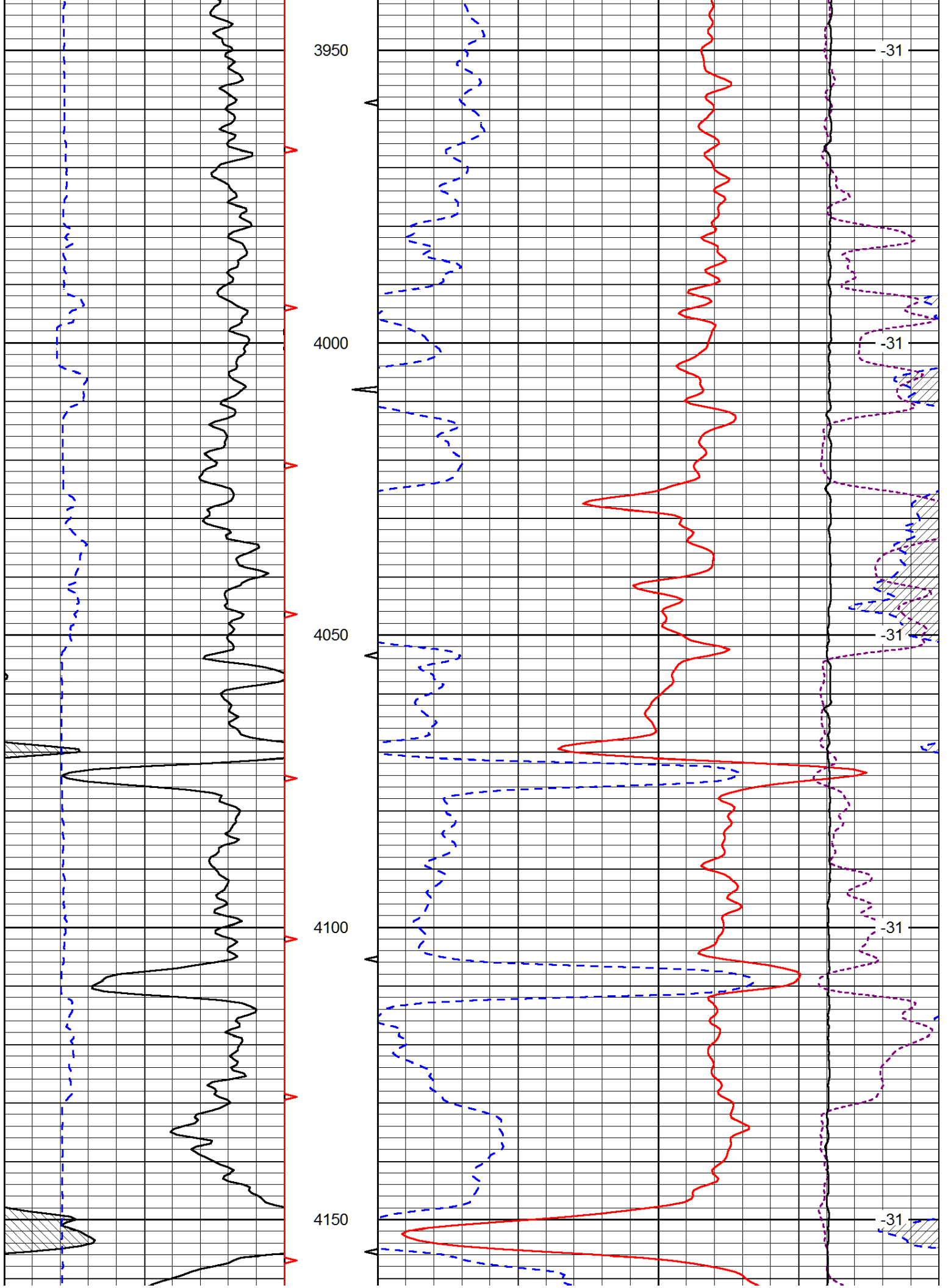


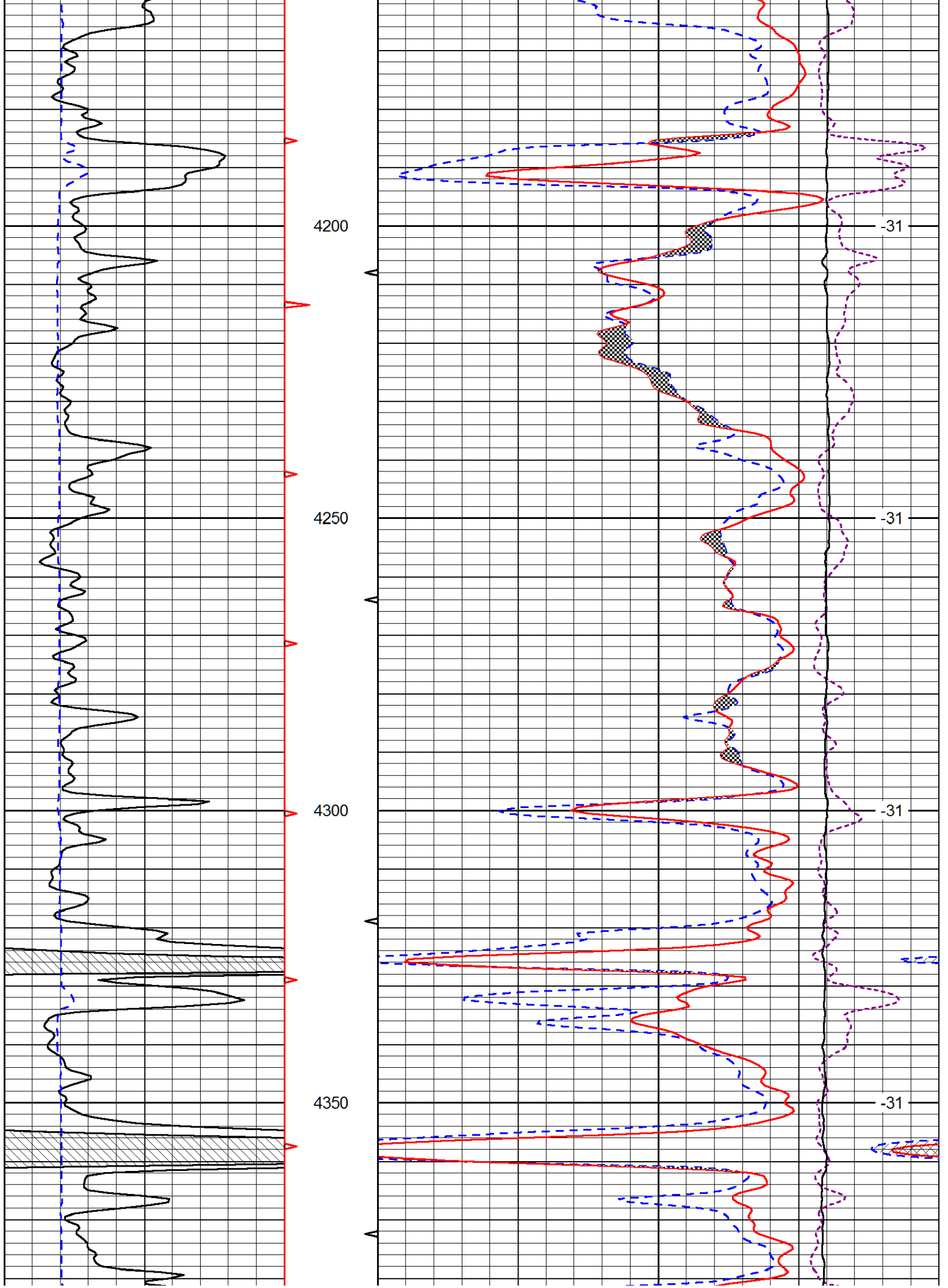
Database File: n10_mhd.db
 Dataset Pathname: dil/n10main
 Presentation Format: cndlspec
 Dataset Creation: Fri Aug 01 05:18:02 2014
 Charted by: Depth in Feet scaled 1:240

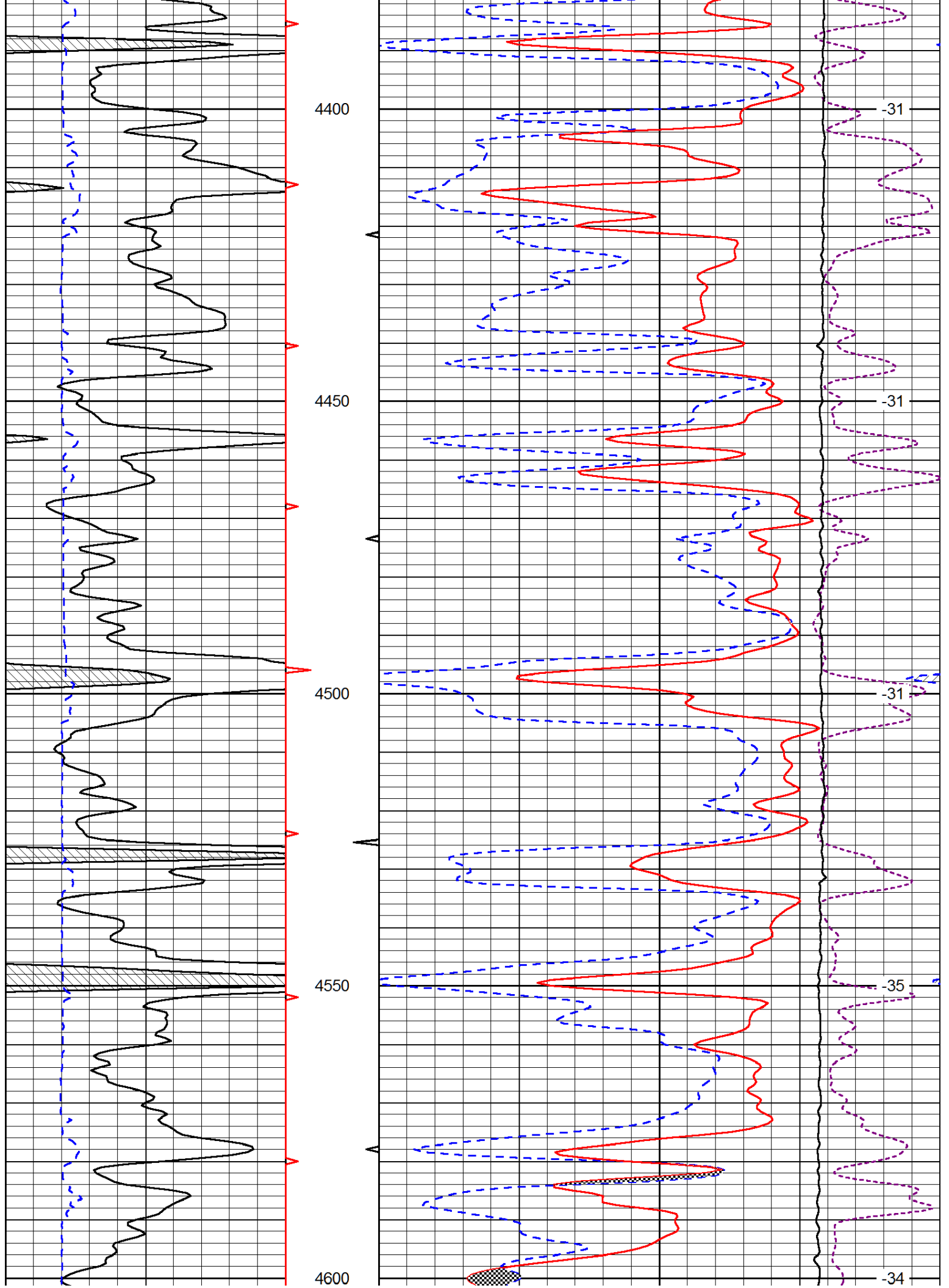


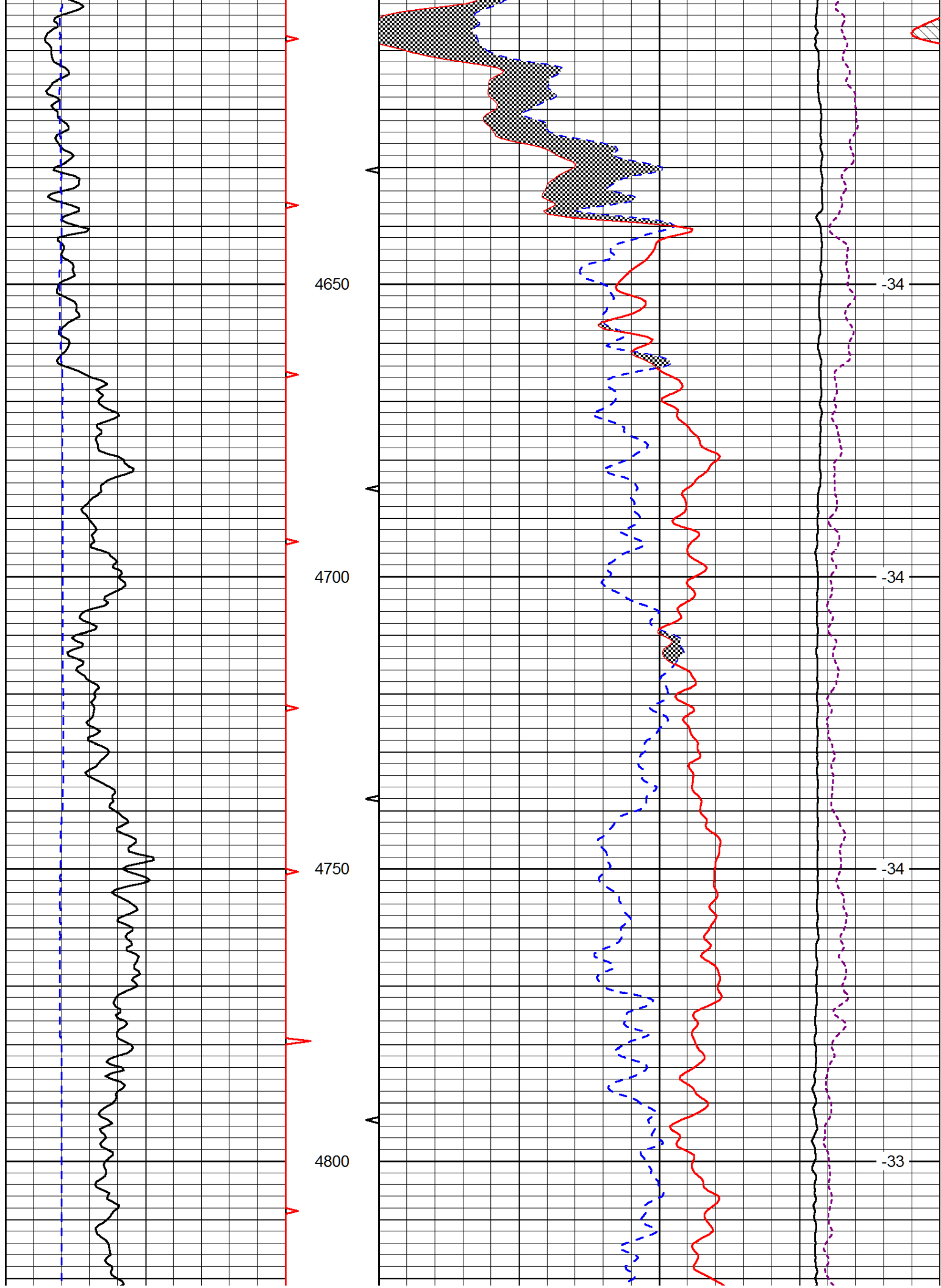


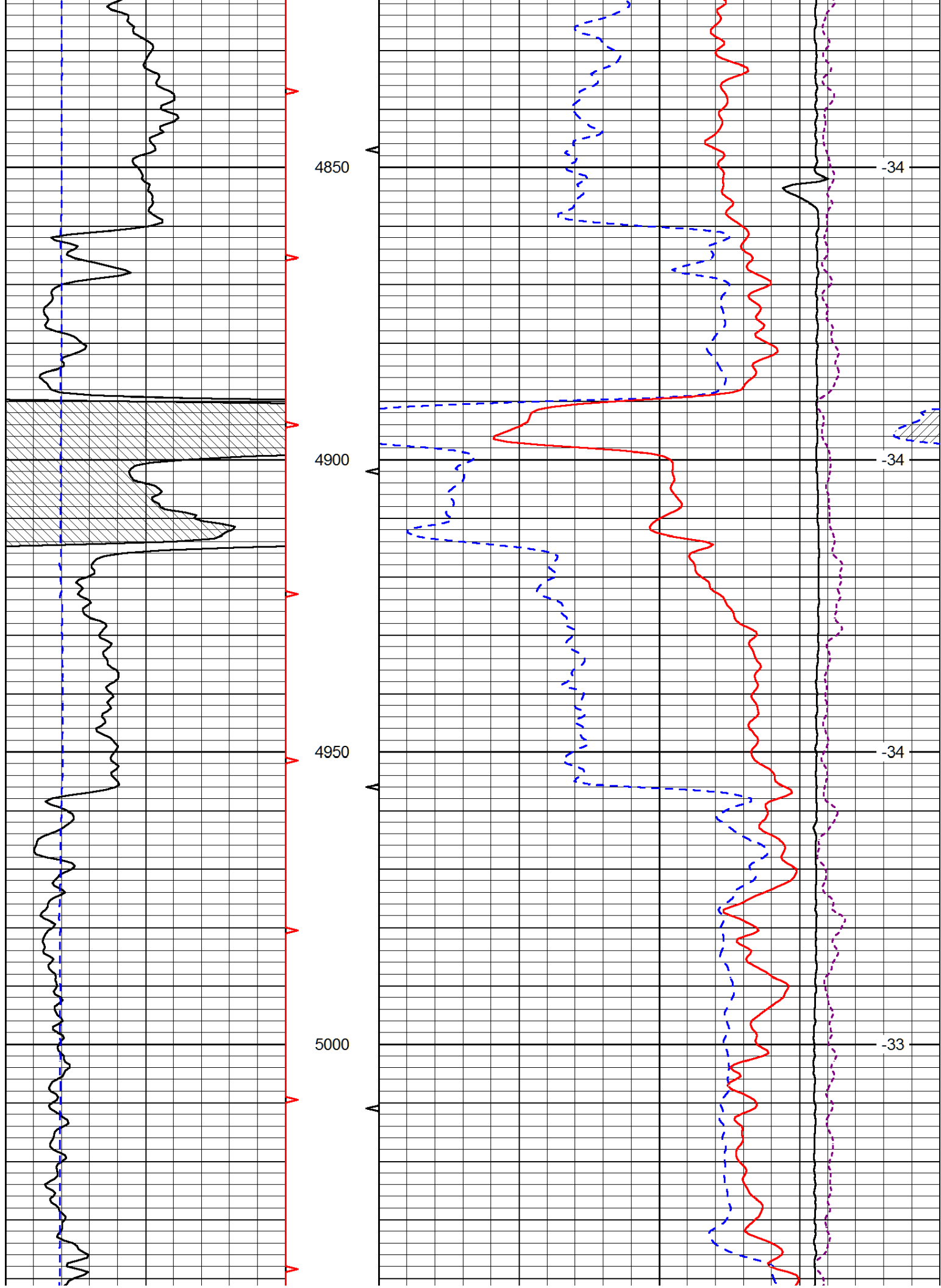


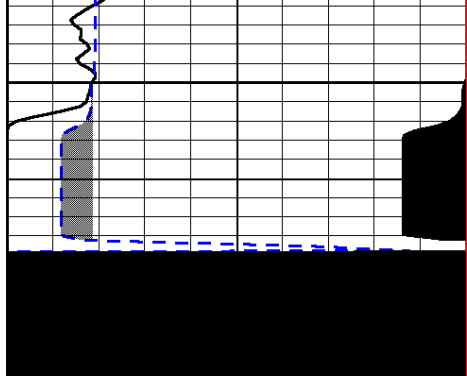




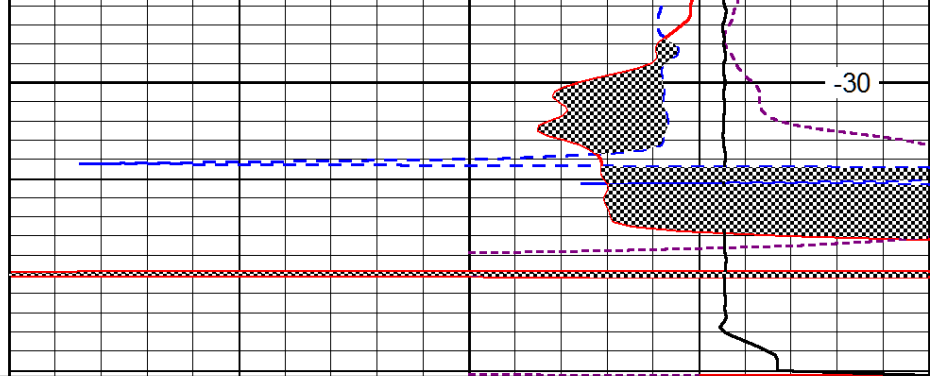








5050



| | | |
|---|----------------|-----|
| 0 | Gamma Ray | 150 |
| 6 | Caliper (GAPI) | 16 |

| | | |
|-------|-------------------------------|------|
| 30 | CNLS | -10 |
| 30 | Compensated Density (2.71 ma) | -10 |
| 10000 | Line Tension | 0 |
| -0.25 | Correction | 0.25 |
| LSPD | | |