



Pioneer Energy Services

Dual Induction Log

15-007-24200-00-00

Company N-10 Exploration, LLC
Well Medicine River Ranch "A" #3
Field Landis
County Barber **State** Kansas
Location W/2 SE NE
 1980' FNL / 990' FEL
Sec: 21 **Twp:** 34S **Rge:** 11W
Permanent Datum Ground Level Elevation 1328
Log Measured From Kelly Bushing 10 Ft. Above Perm. Datum
Drilling Measured From Kelly Bushing
Other Services CNL / CDL
Elevation K.B. 1338
 D.F. G.L. 1328

Date	8/1/2014
Run Number	One
Depth Driller	5062
Depth Logger	5074
Bottom Logged Interval	5073
Top Log Interval	200
Casing Driller	8.625 @ 251
Casing Logger	246
Bit Size	7.875
Type Fluid in Hole	Chemical
Salinity, ppm CL	3000
Density / Viscosity	9.5 63
pH / Fluid Loss	10.0 9.2
Source of Sample	Flowline
Rm @ Meas. Temp	0.40 @ 70
Rmf @ Meas. Temp	0.30 @ 70
Rmc @ Meas. Temp	0.54 @ 70
Source of Rmf / Rmc	Charts
Rm @ BHT	0.22 @ 127
Operating Rig Time	4 Hours
Max Rec. Temp. F	127
Equipment Number	17
Location	Hays
Recorded By	R. Barnhart
Witnessed By	Tim Pierce

<<< Fold Here >>>

All interpretations are opinions based on inferences from electrical or other measurements and we cannot and do not guarantee the accuracy or correctness of any interpretation, and we shall not, except in the case of gross or willful negligence on our part, be liable or responsible for any loss, costs, damages, or expenses incurred or sustained by anyone resulting from any interpretation made by any of our officers, agents or employees. These interpretations are also subject to our general terms and conditions set out in our current Price Schedule.

Comments

Thank you for using Log-Tech, Inc.
(785) 625-3858

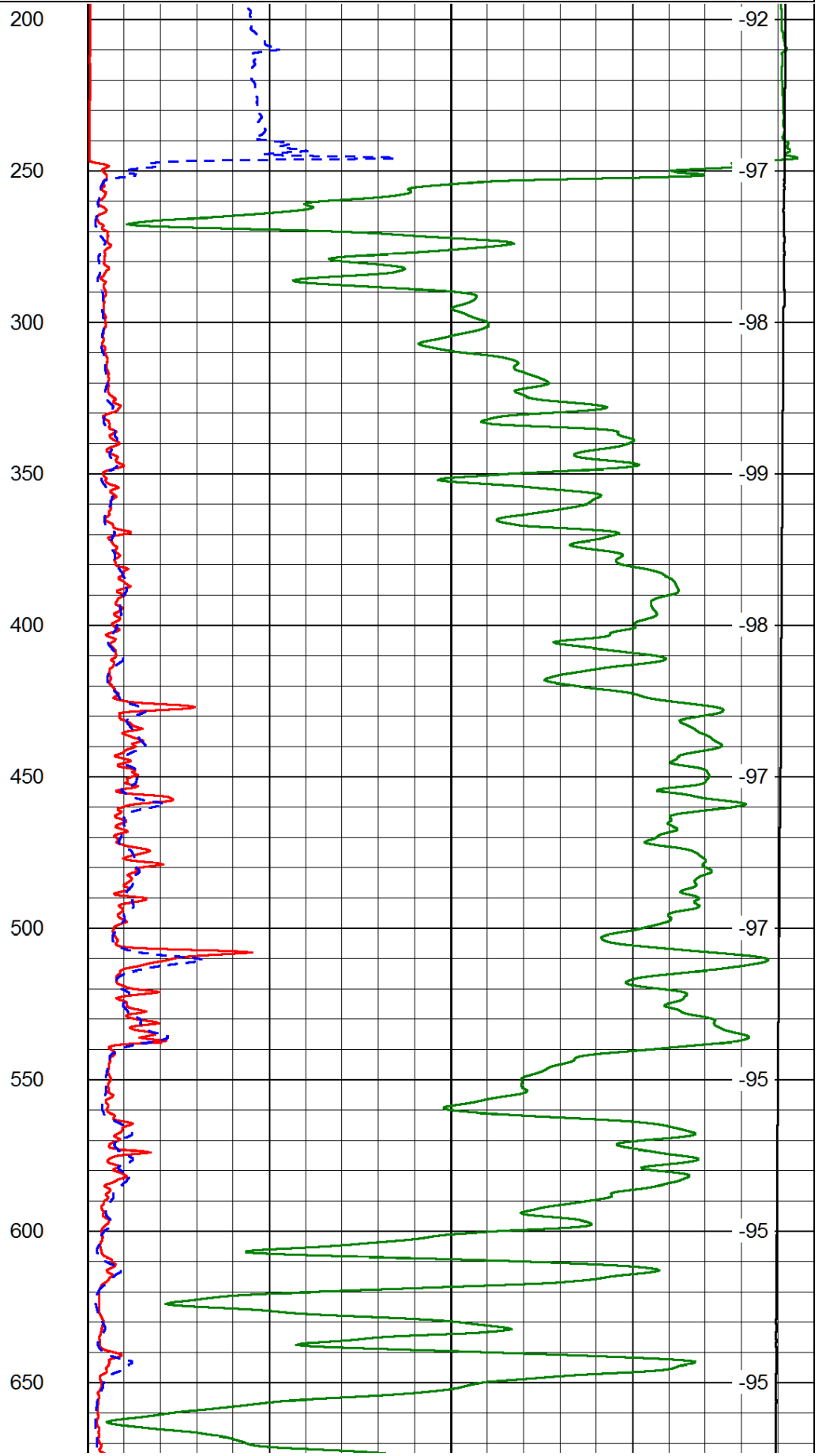
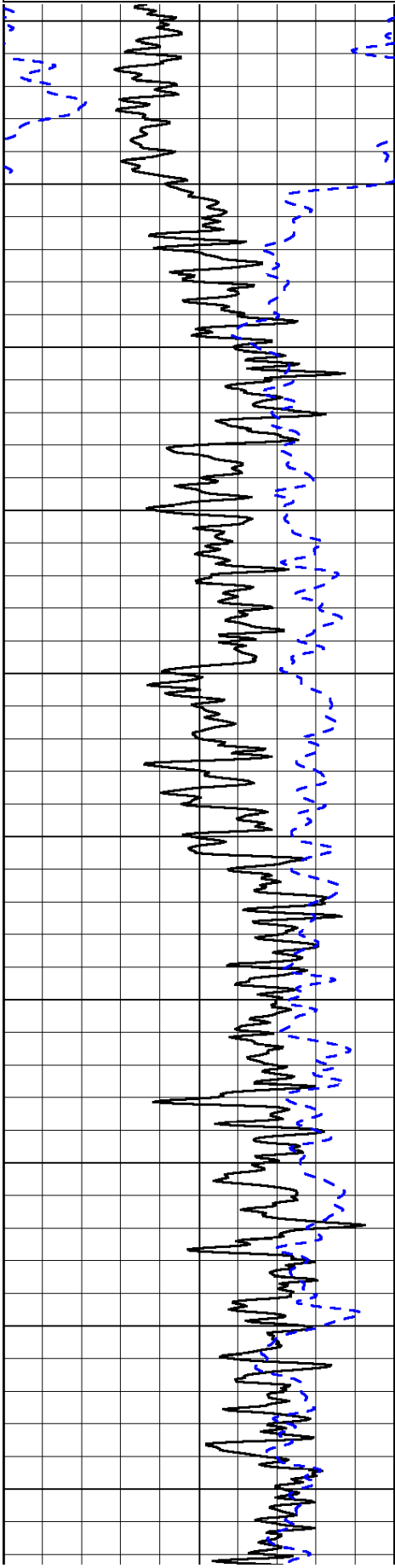
Medicine Lodge, KS:
S to Gerlane, E to Bethel, S to Angus, 1 1/2W to a fork, R thru CG,
1/8 to a fork, L 1m to rig

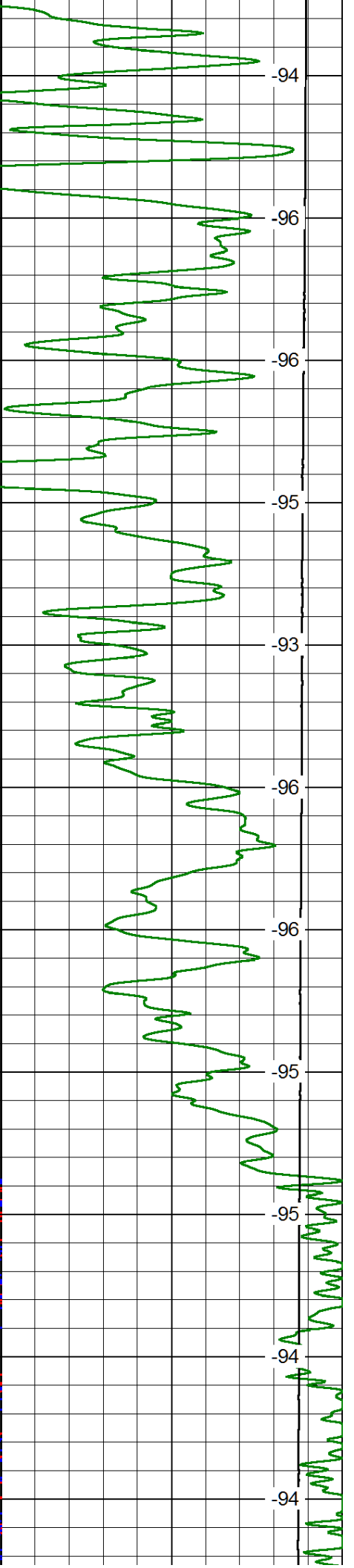
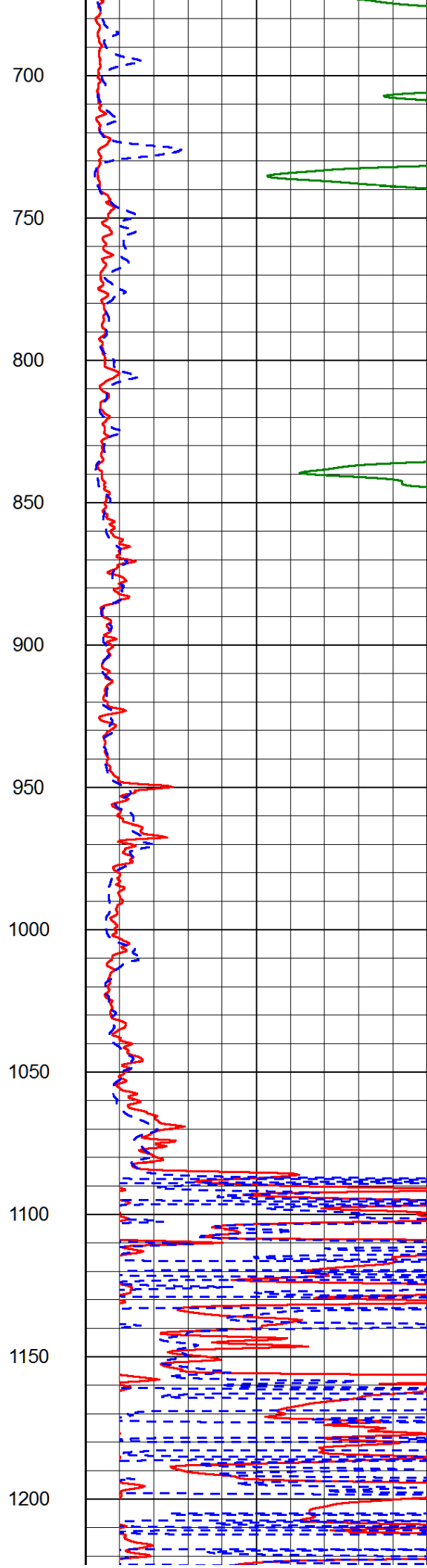
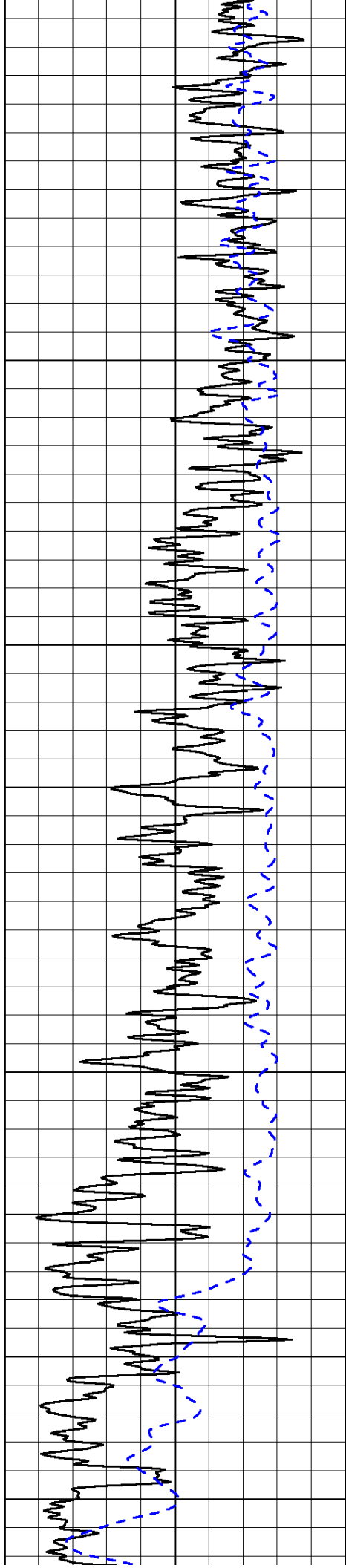
Database File: n10_mhd.db
 Dataset Pathname: dil/n10main
 Presentation Format: dil2in
 Dataset Creation: Fri Aug 01 05:18:02 2014
 Charted by: Depth in Feet scaled 1:600

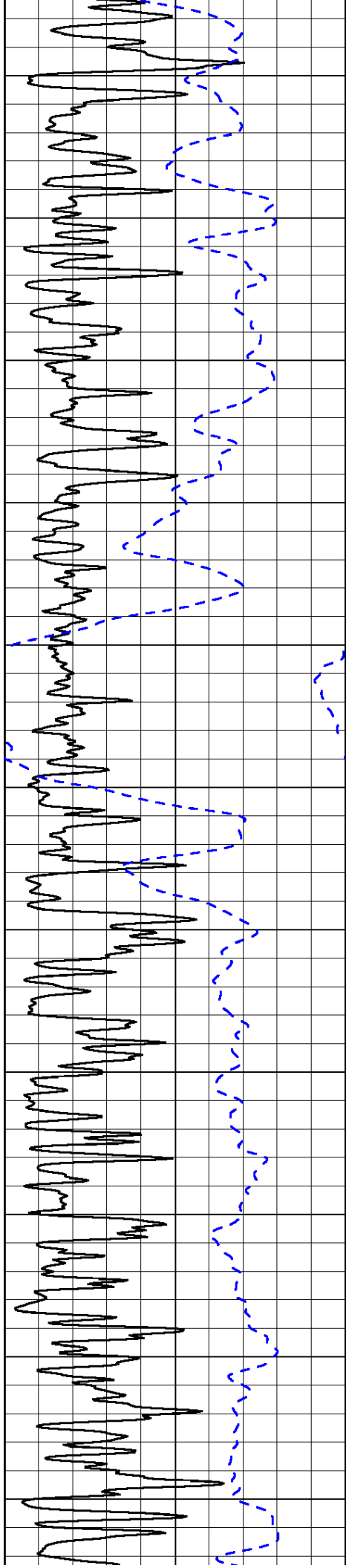
0 Gamma Ray 150
-200 SP (mV) 0

0 Shallow Resistivity 50
0 Deep Resistivity 50
1000 Conductivity 0
15000 Line Tension 0
50 Shallow Resistivity 500
50 Deep Resistivity 500

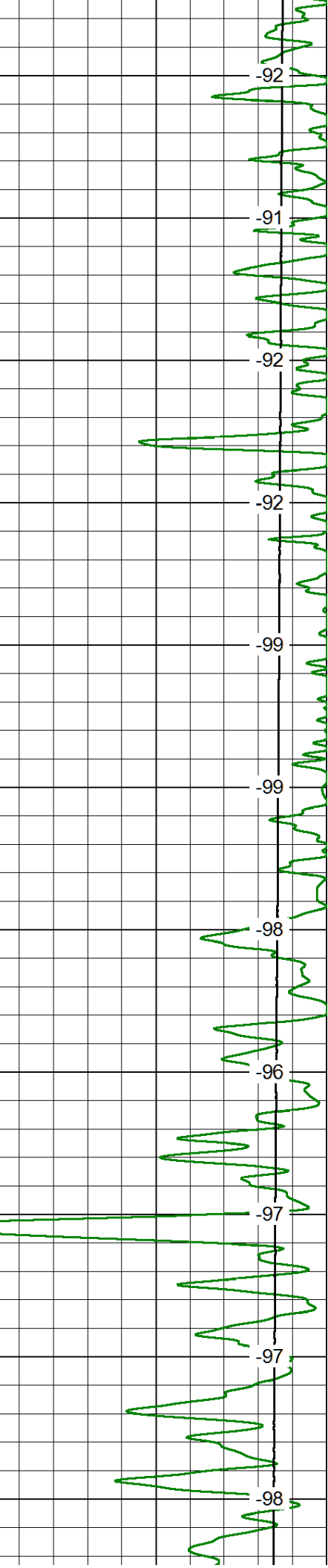
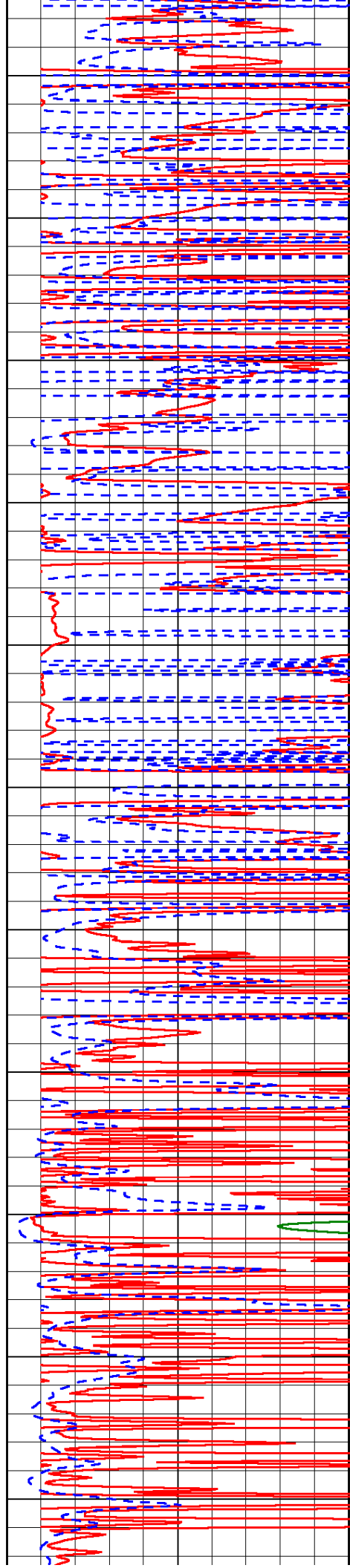
LSPD

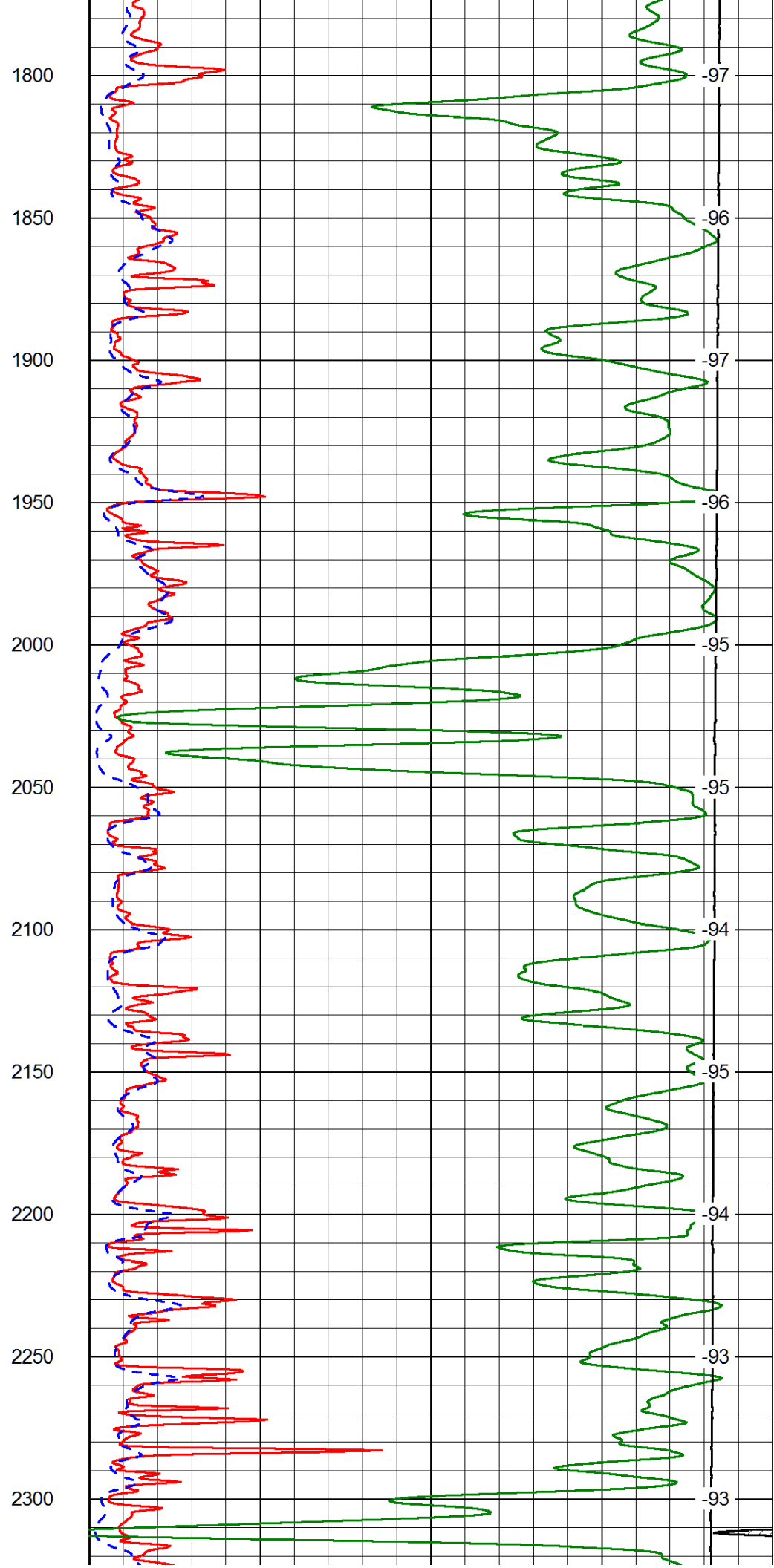
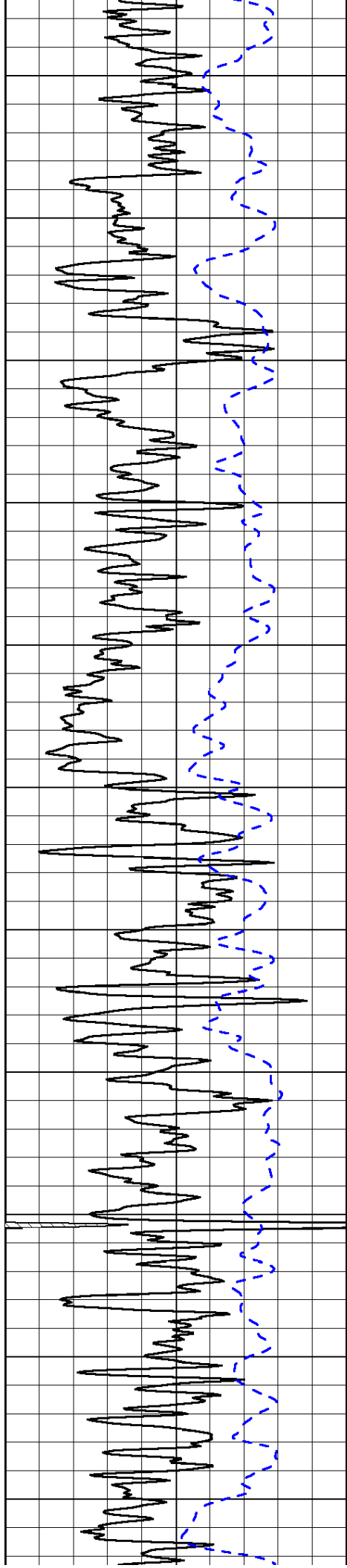


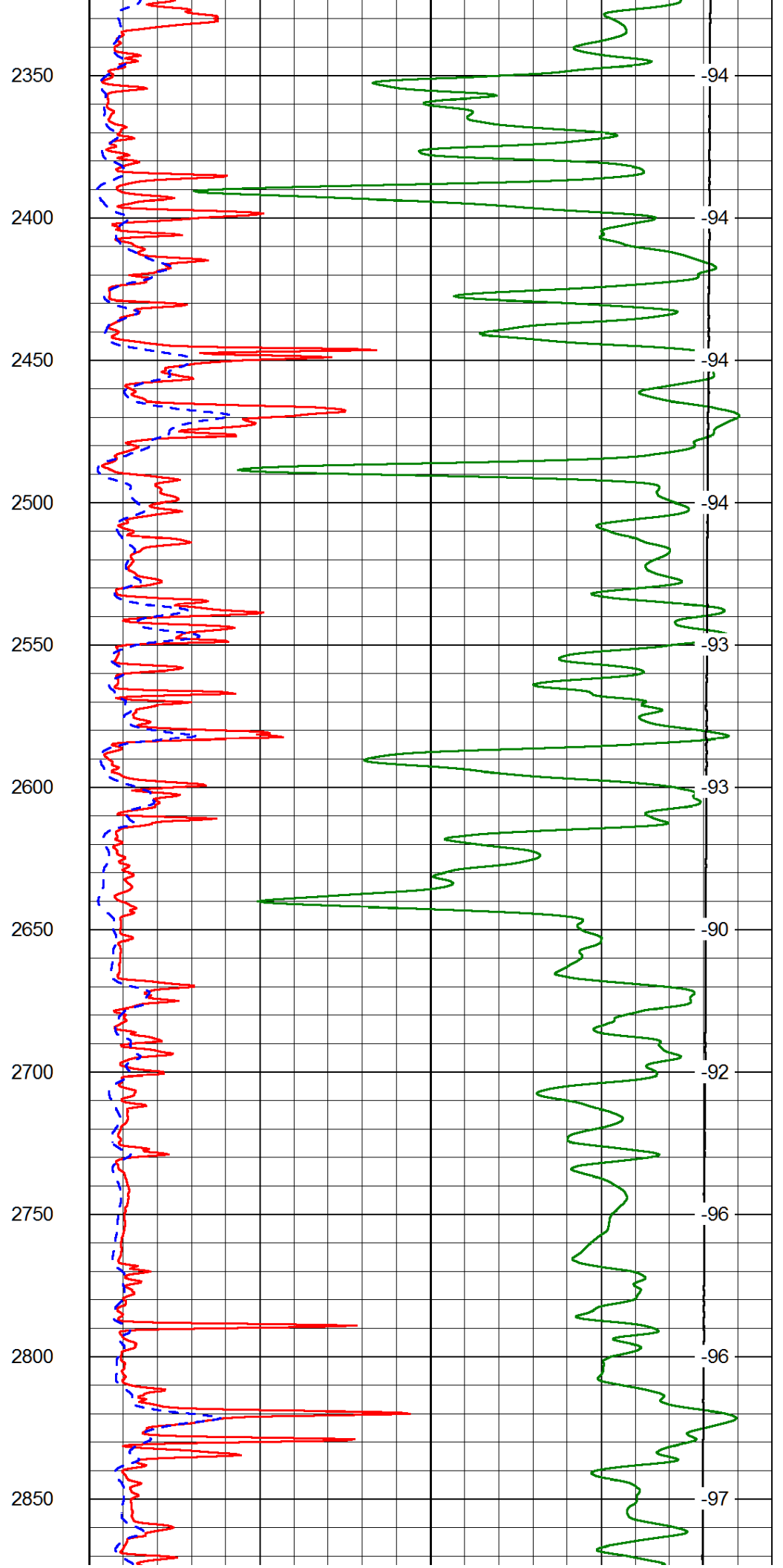
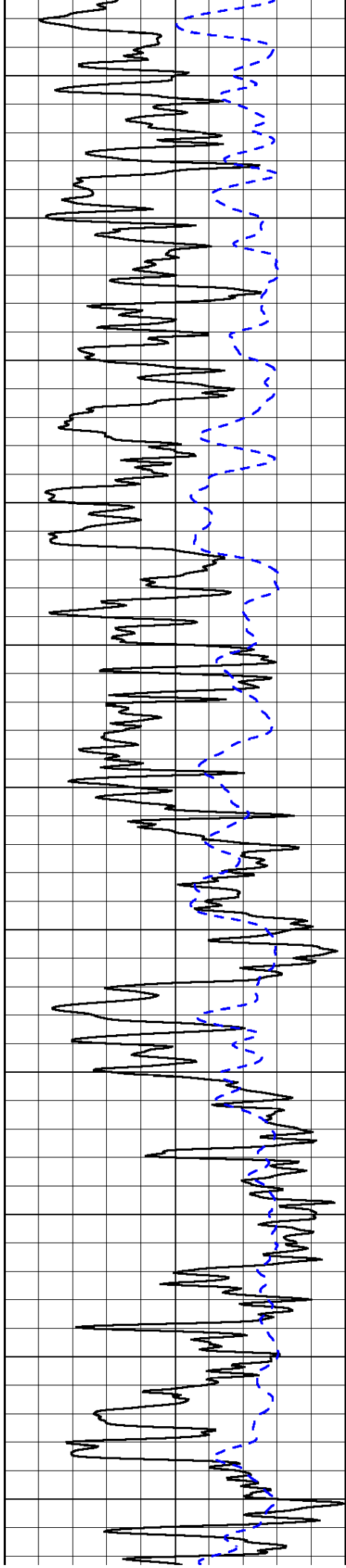


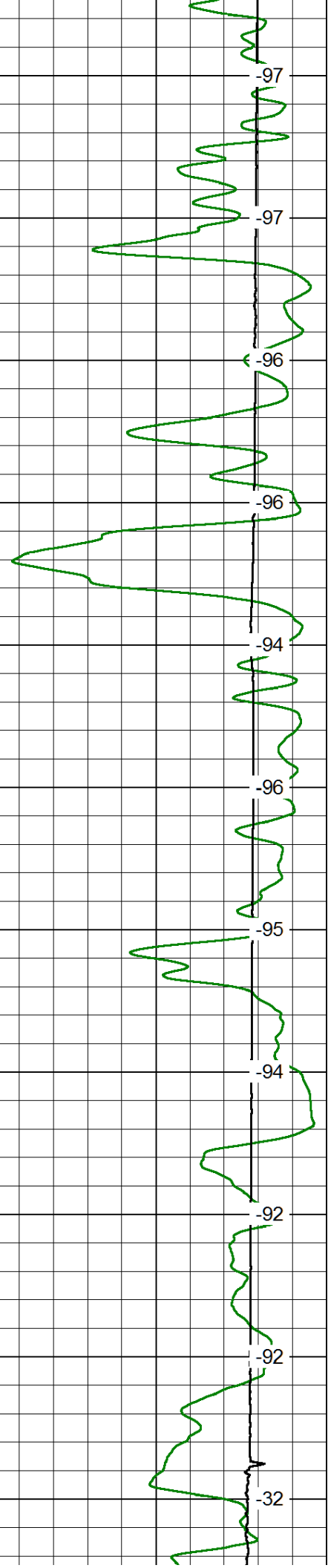
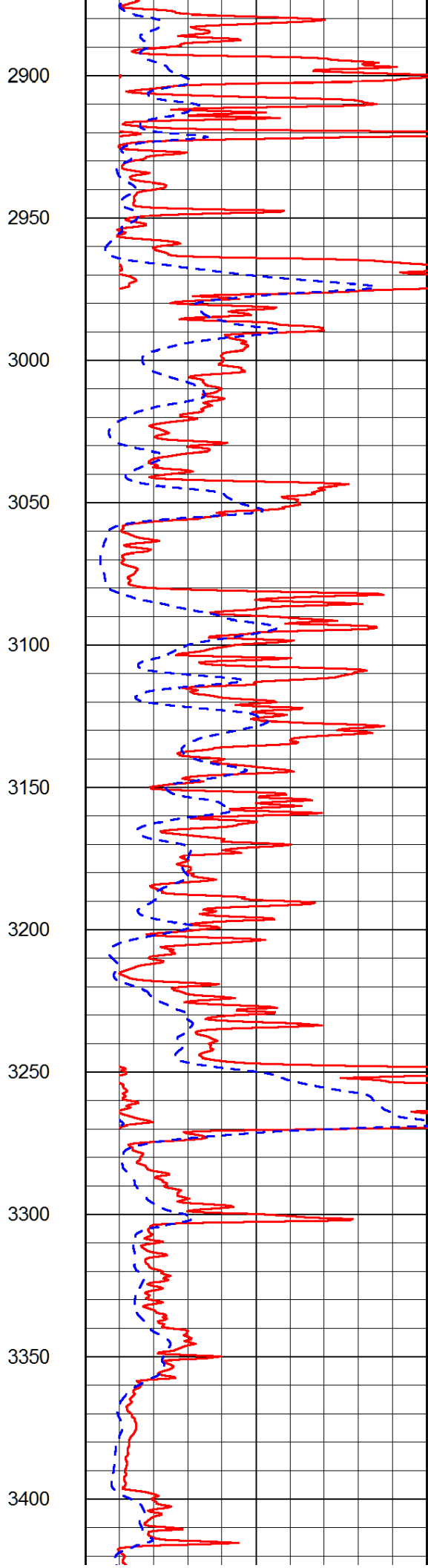
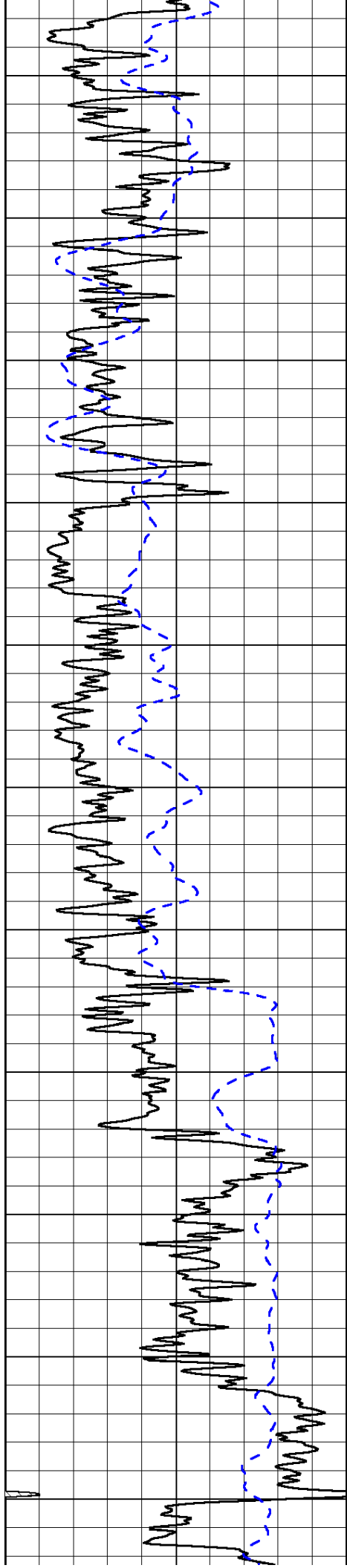


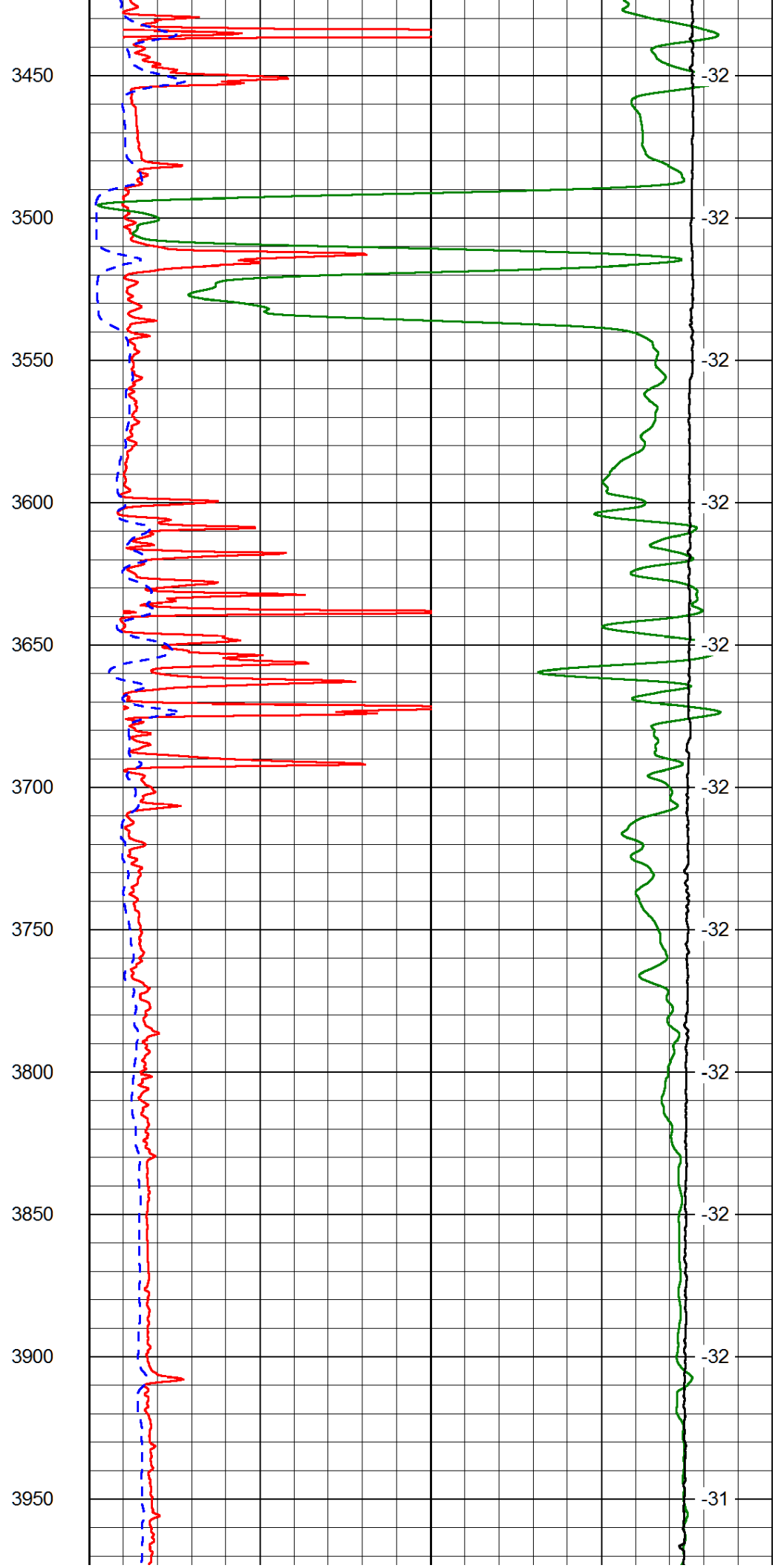
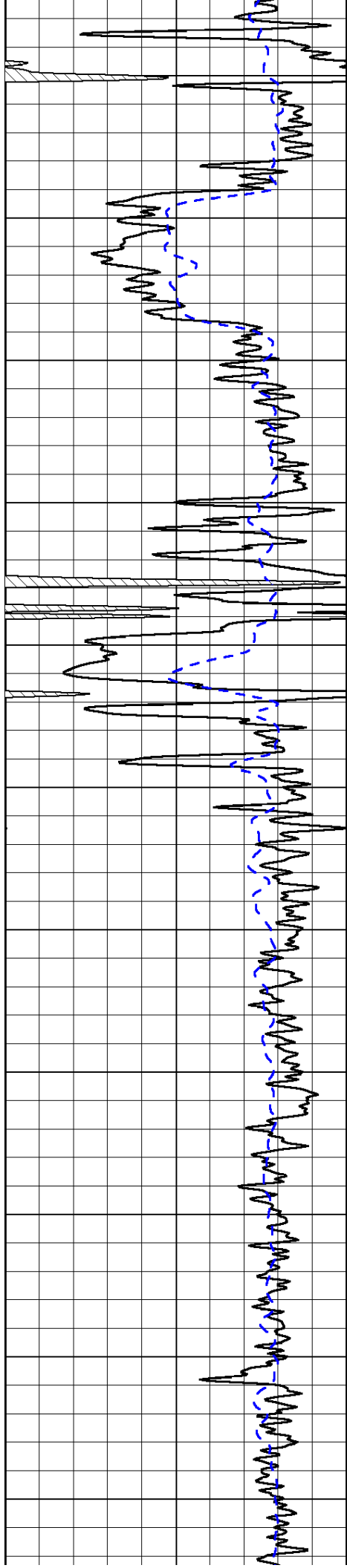
1250
1300
1350
1400
1450
1500
1550
1600
1650
1700
1750

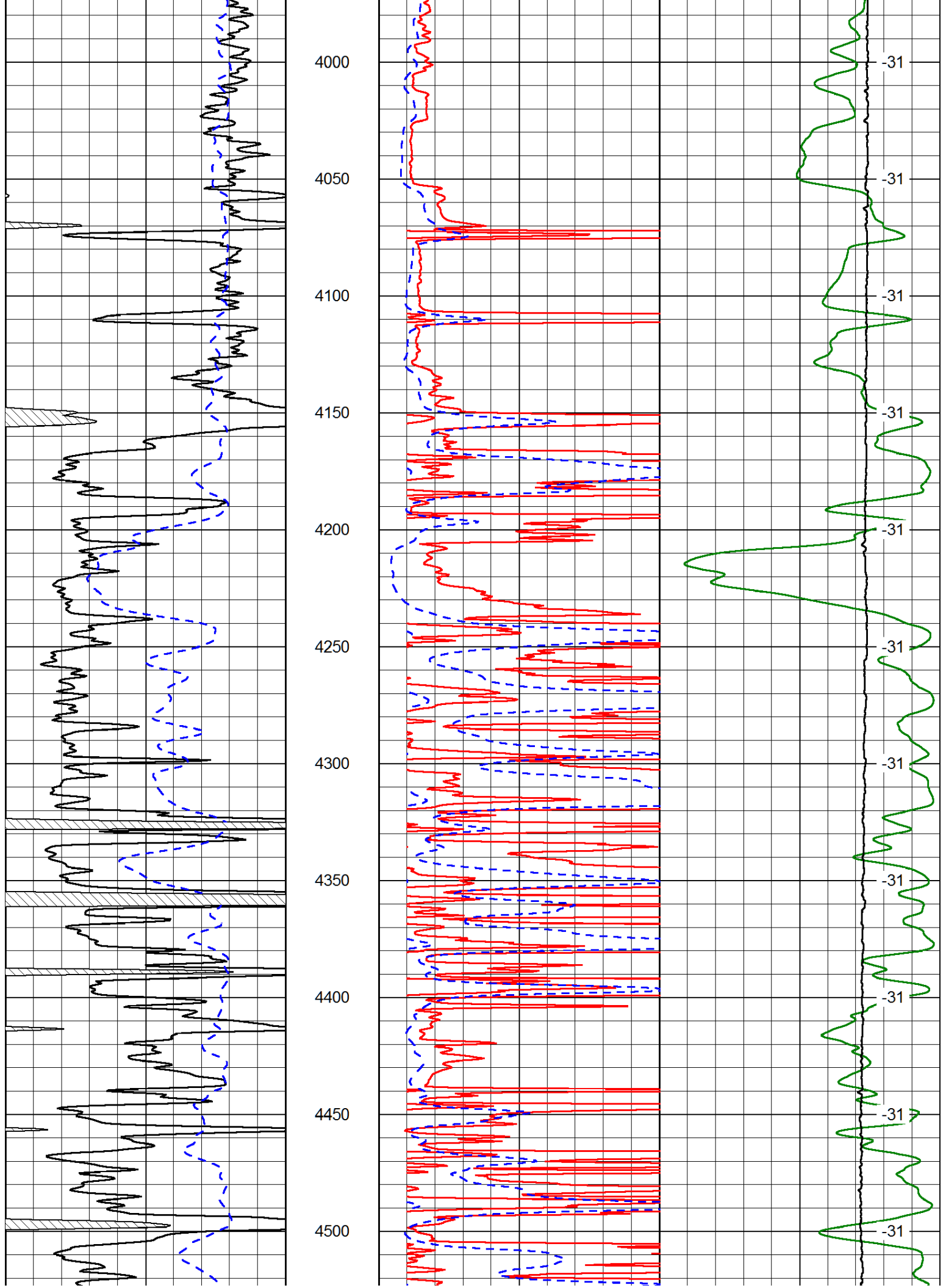


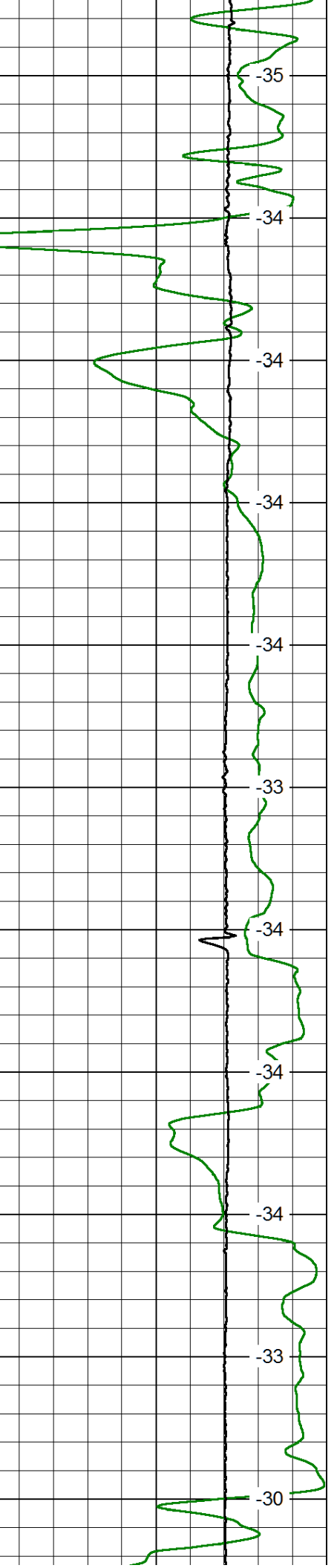
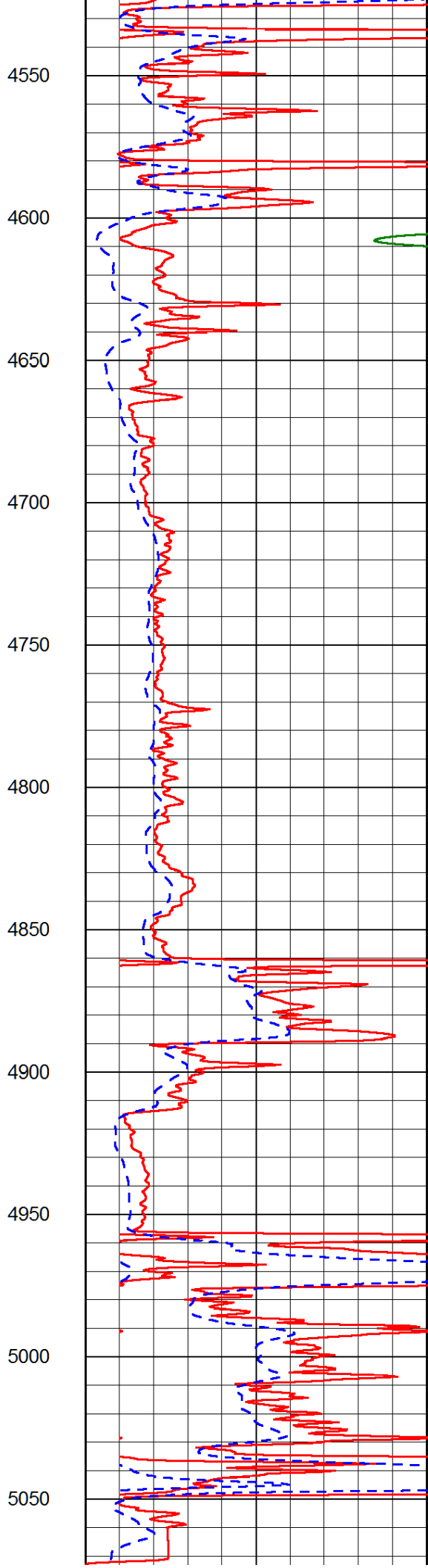
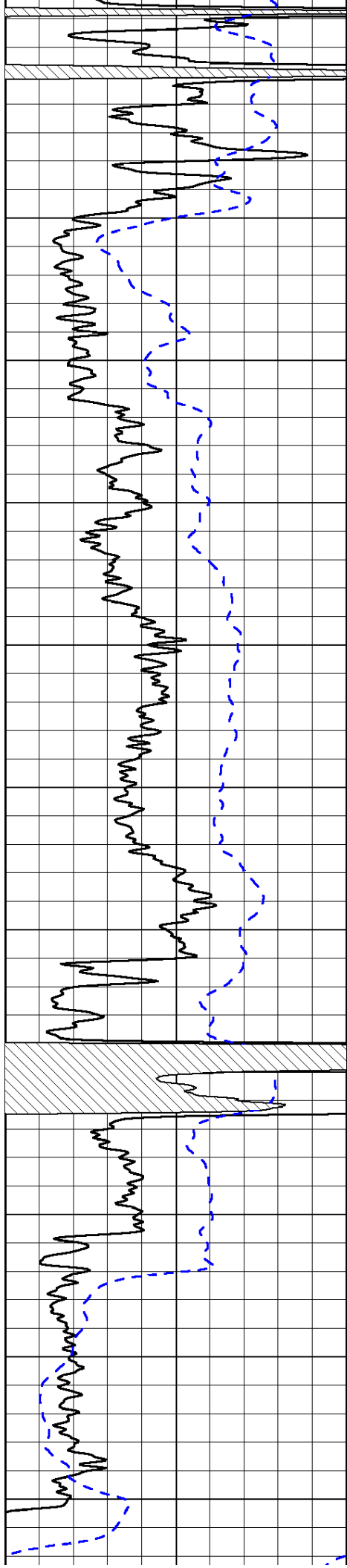












0	Gamma Ray	150
-200	SP (mV)	0

0	Shallow Resistivity	50
0	Deep Resistivity	50
1000	Conductivity	0
15000	Line Tension	0
50	Shallow Resistivity	500
50	Deep Resistivity	500

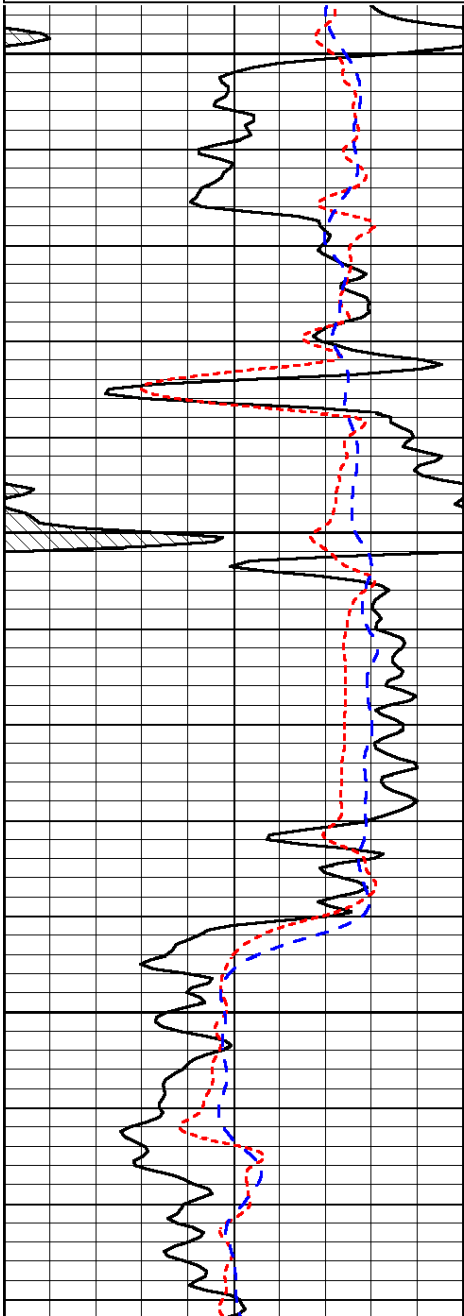
LSPD

Database File: n10_mhd.db
 Dataset Pathname: dil/n10main
 Presentation Format: dil
 Dataset Creation: Fri Aug 01 05:18:02 2014
 Charted by: Depth in Feet scaled 1:240

0	Gamma Ray	150
-160	RXO/RT	40
-200	SP (mV)	0

0.2	Deep Resistivity	2000
0.2	Medium Resistivity	2000
0.2	Shallow Resistivity	2000
10000	Line Tension	0

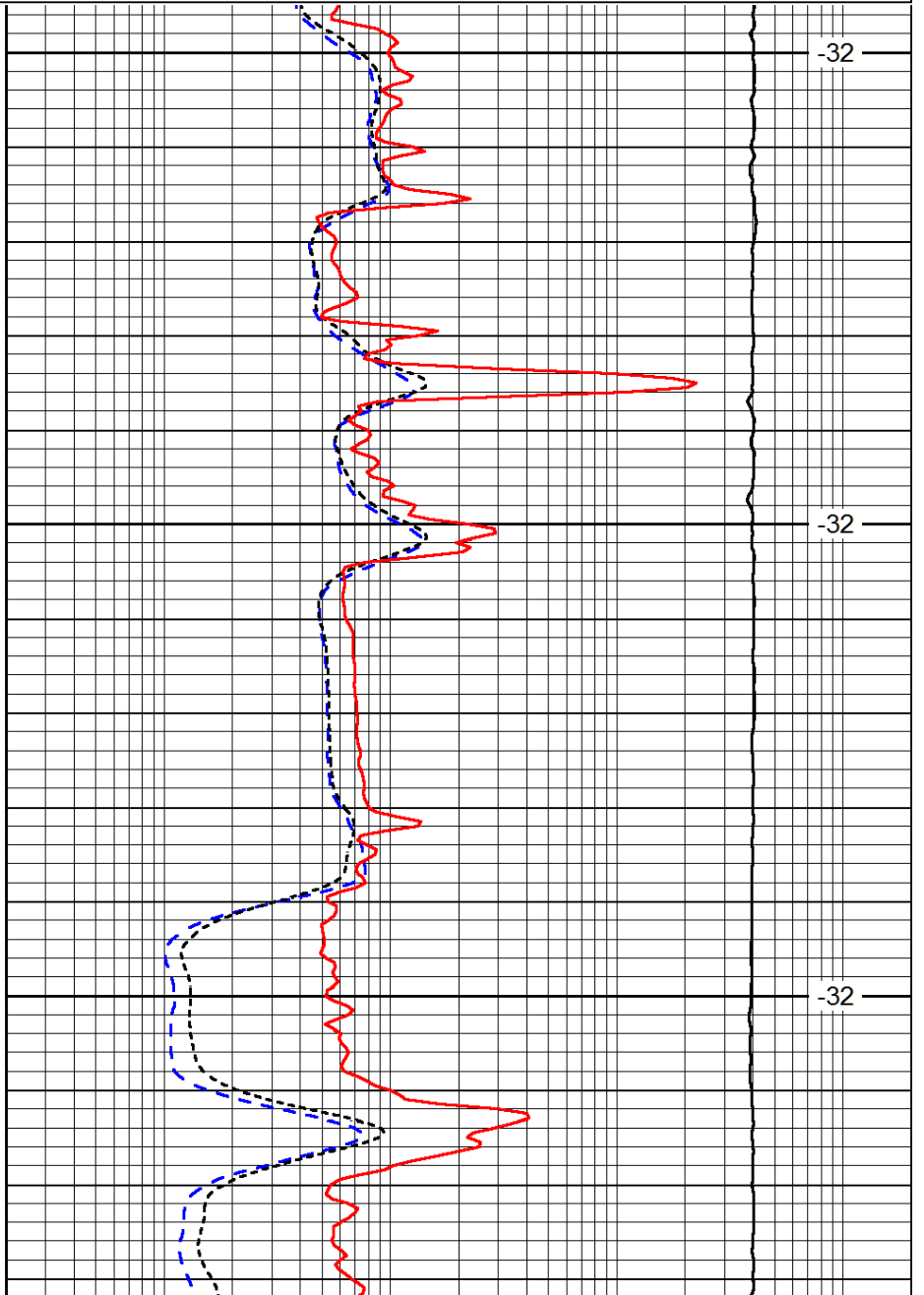
LSPD



3400

3450

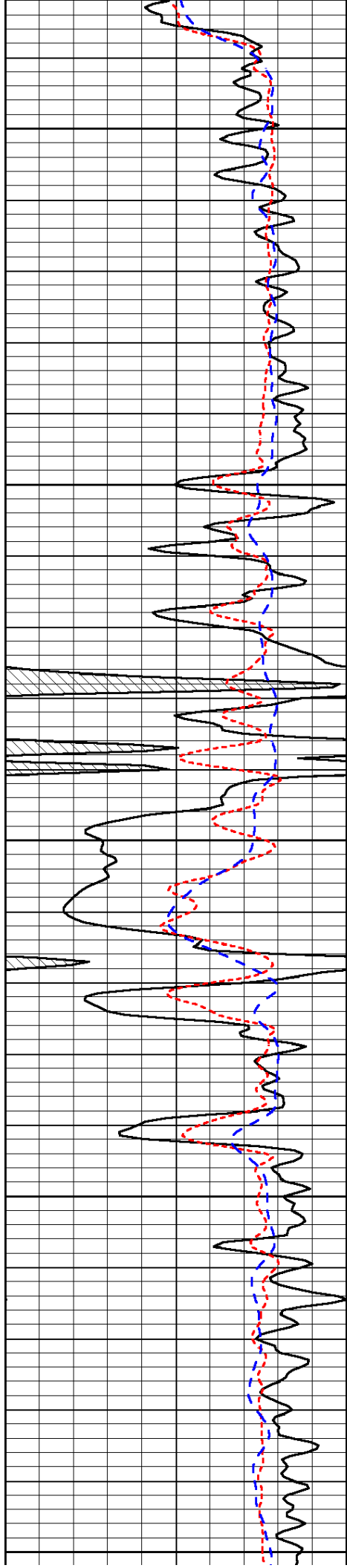
3500



-32

-32

-32



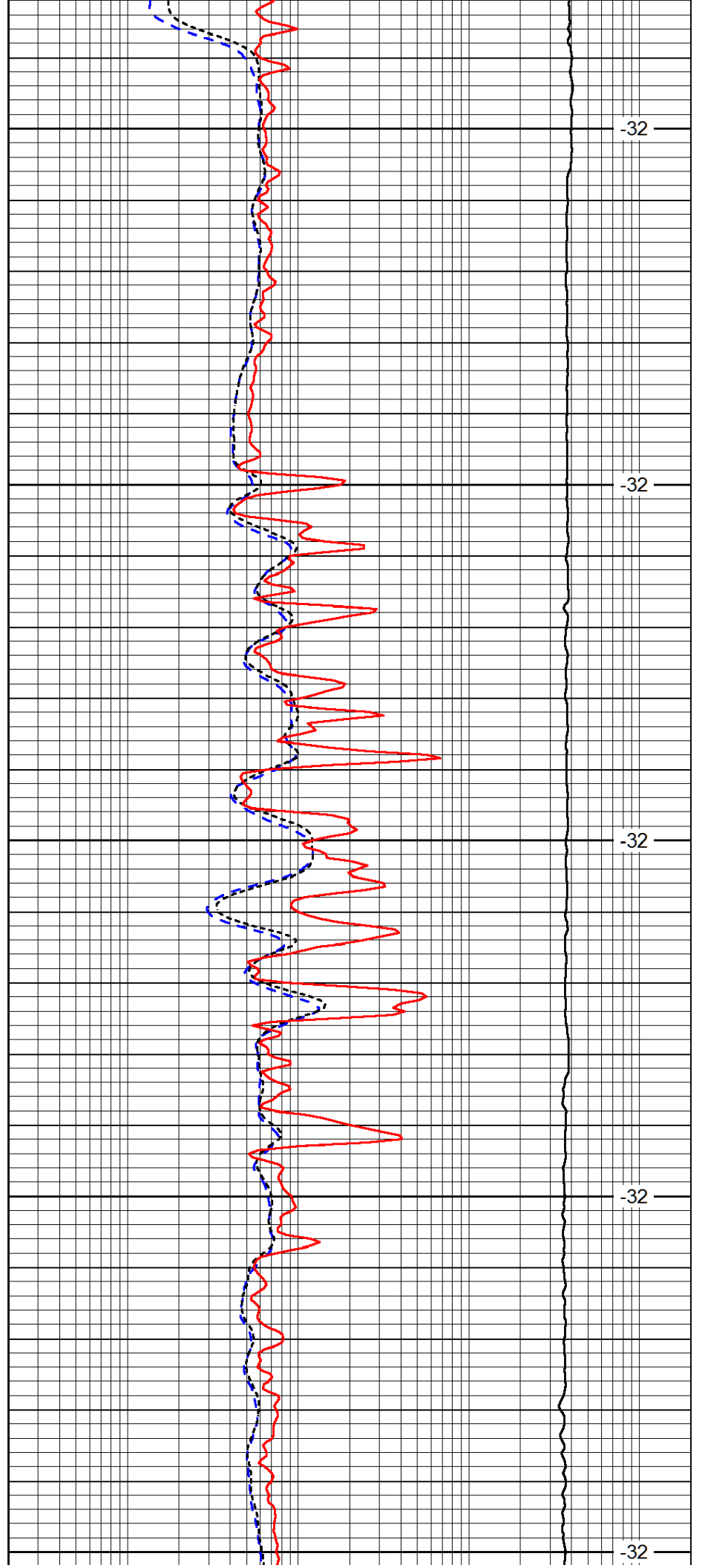
3550

3600

3650

3700

3750



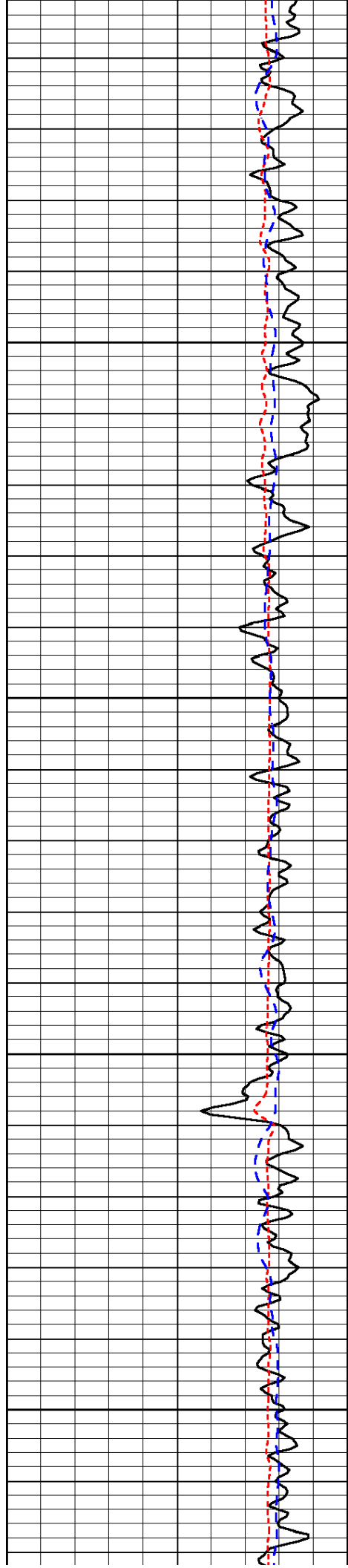
-32

-32

-32

-32

-32

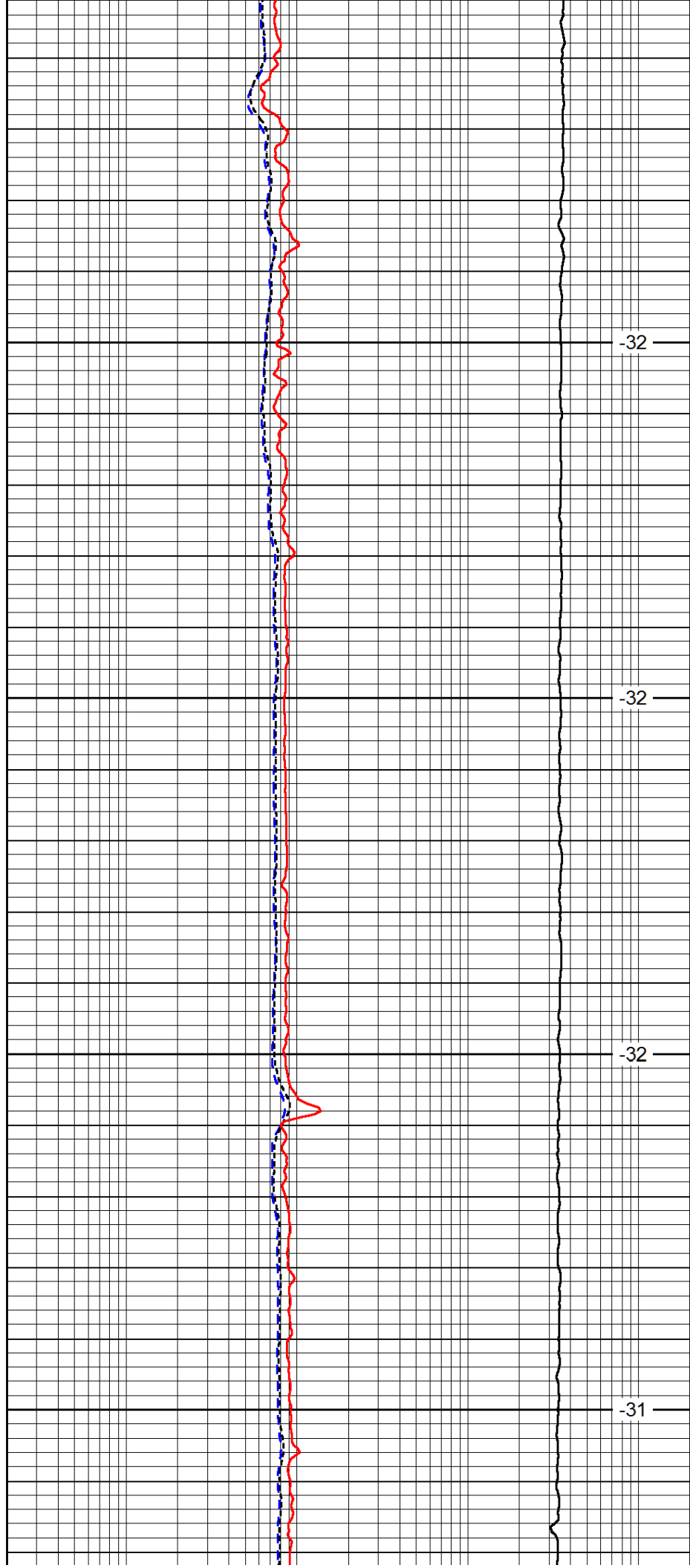


3800

3850

3900

3950

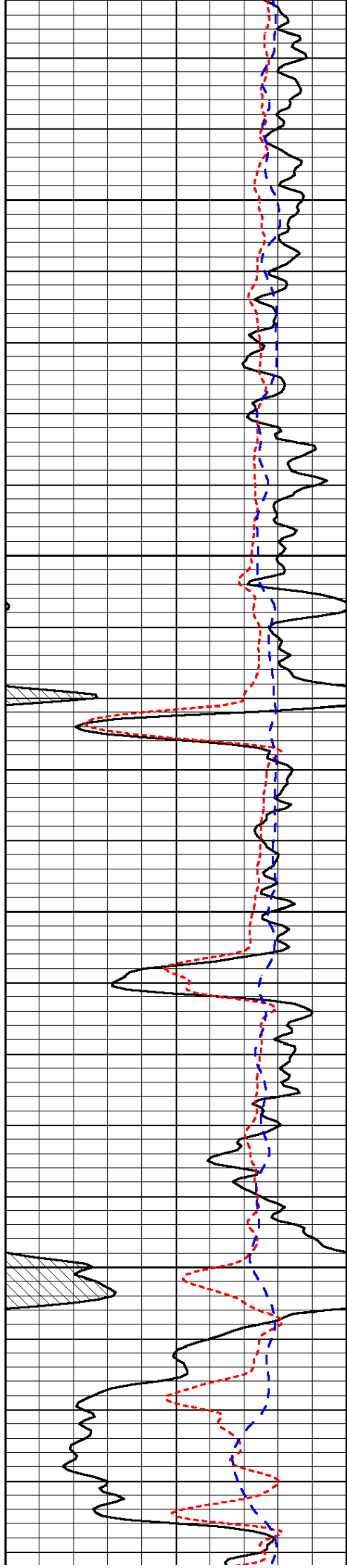


-32

-32

-32

-31

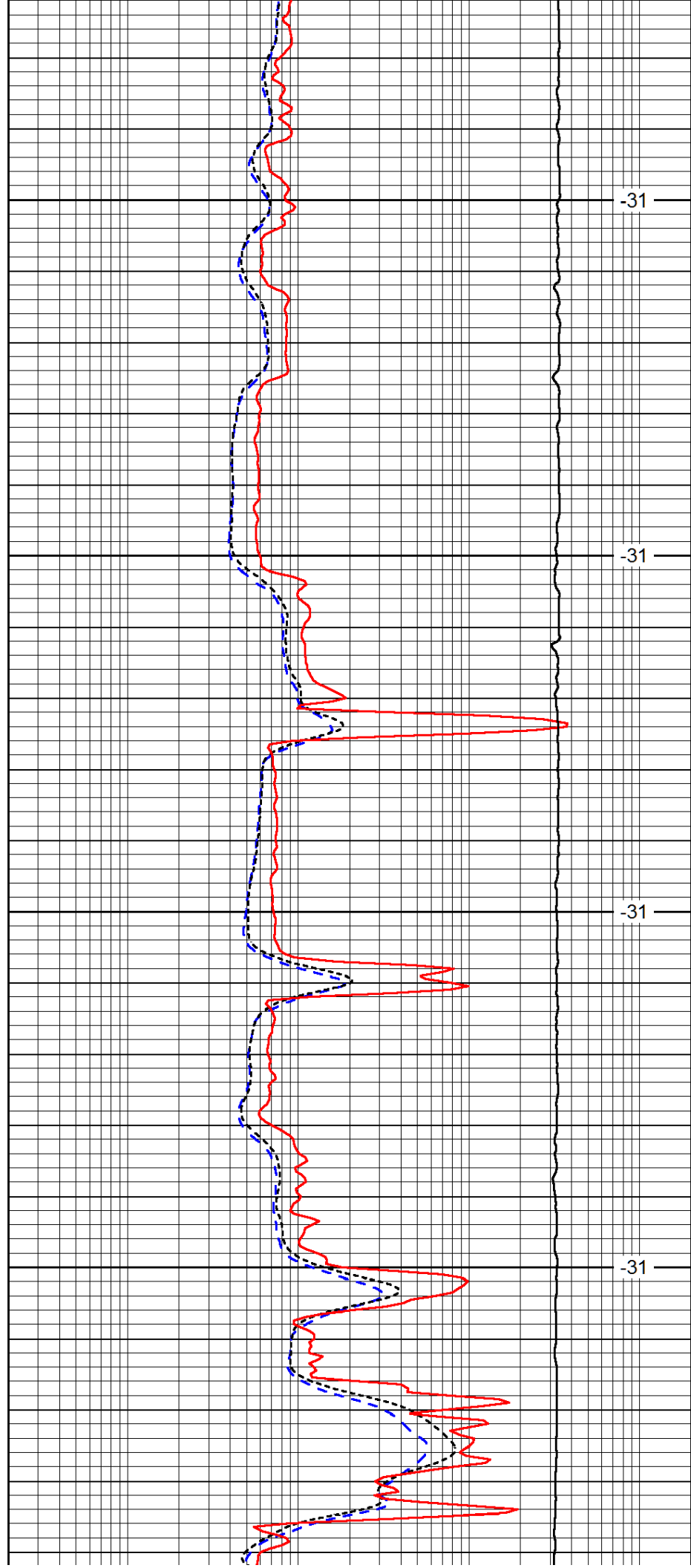


4000

4050

4100

4150

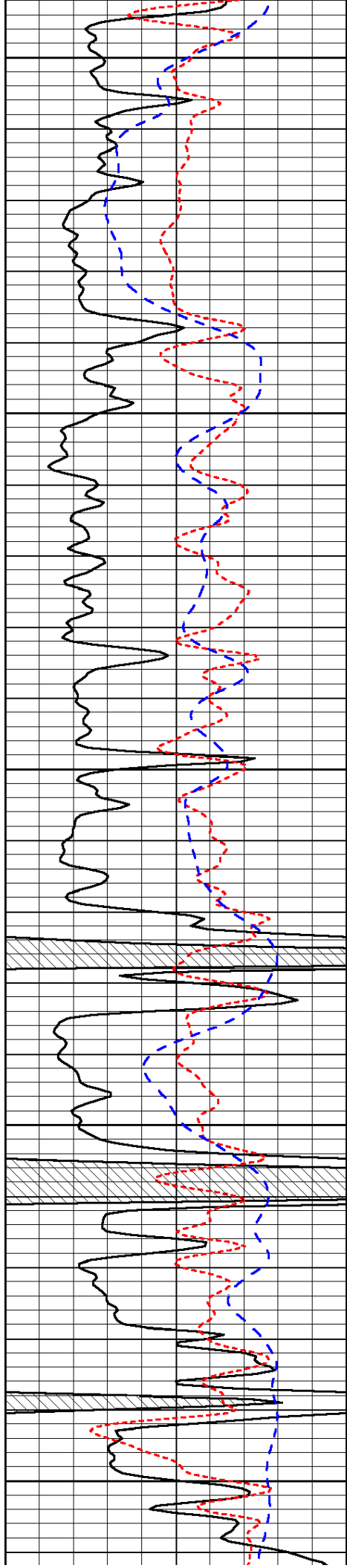


-31

-31

-31

-31



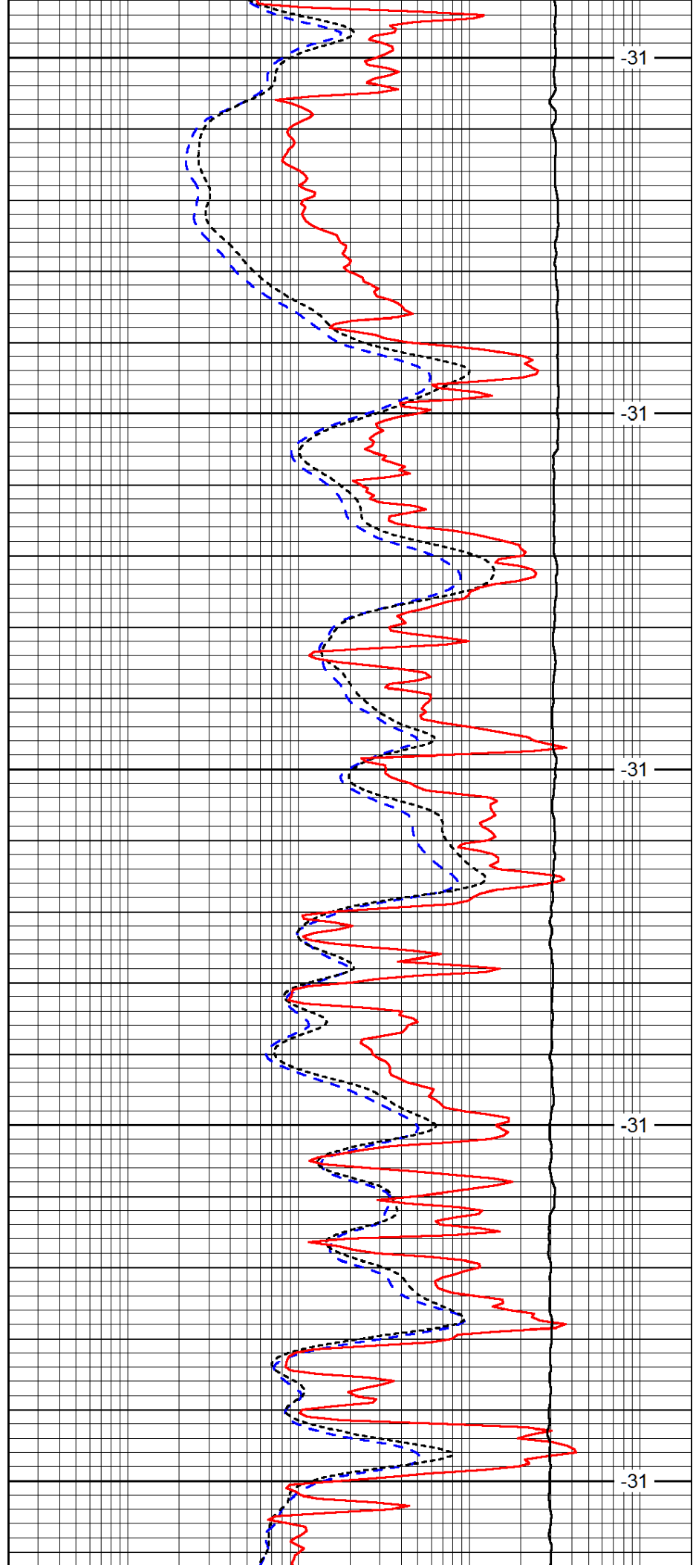
4200

4250

4300

4350

4400



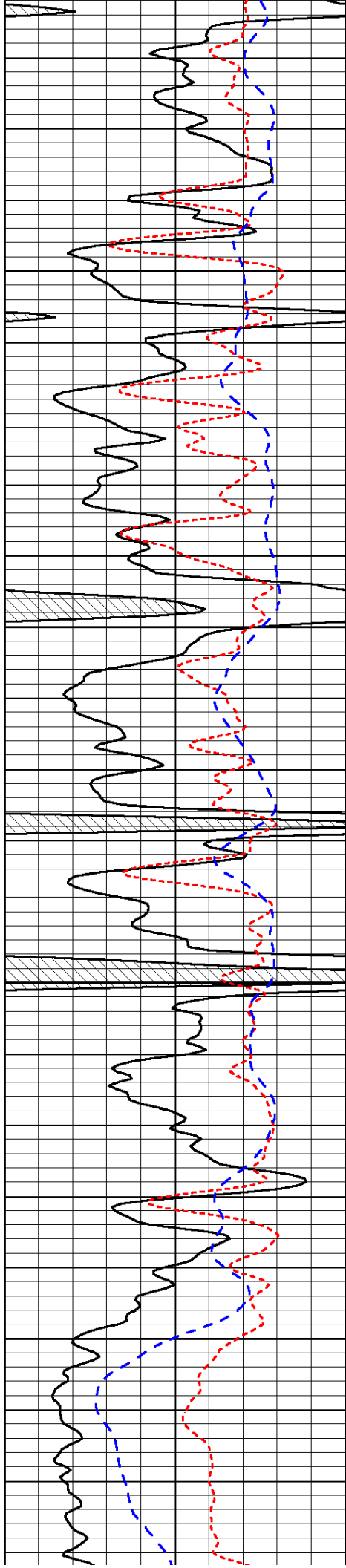
-31

-31

-31

-31

-31

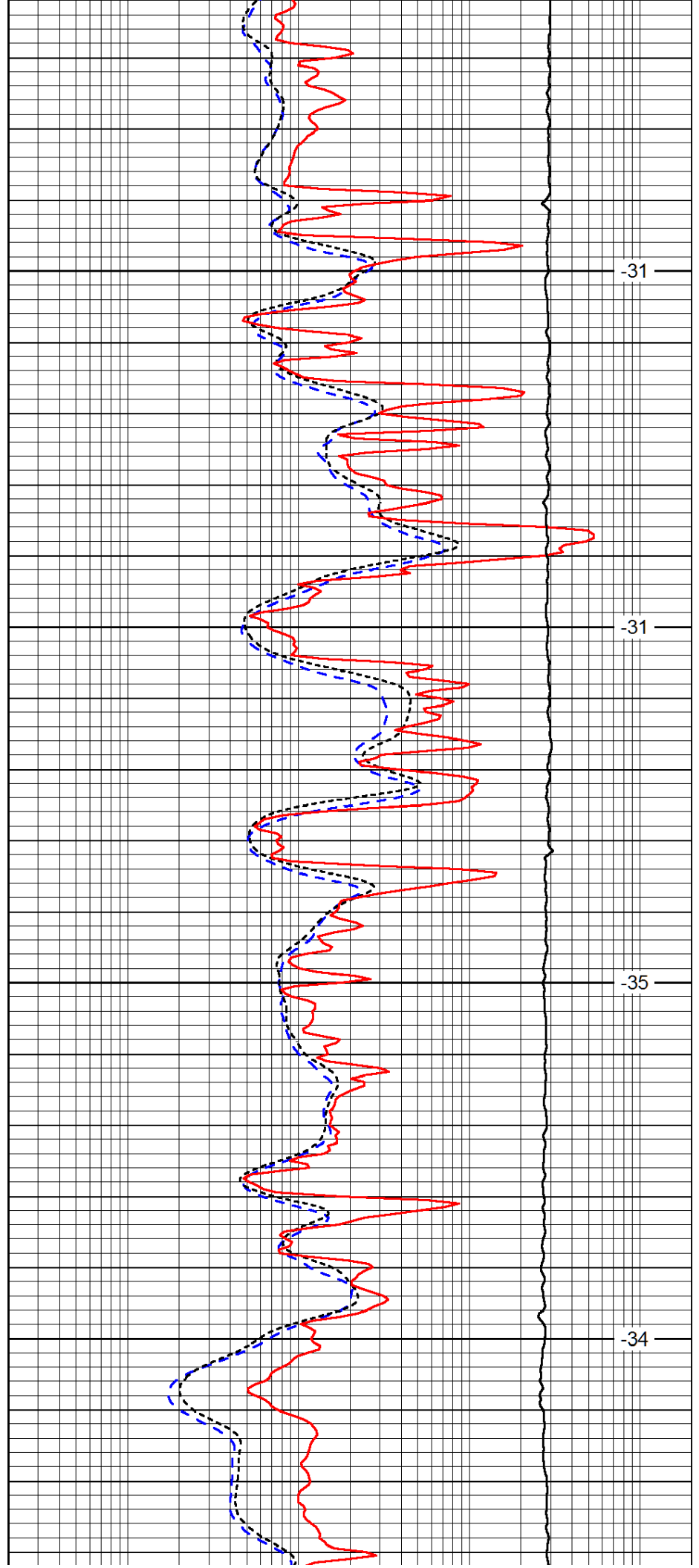


4450

4500

4550

4600

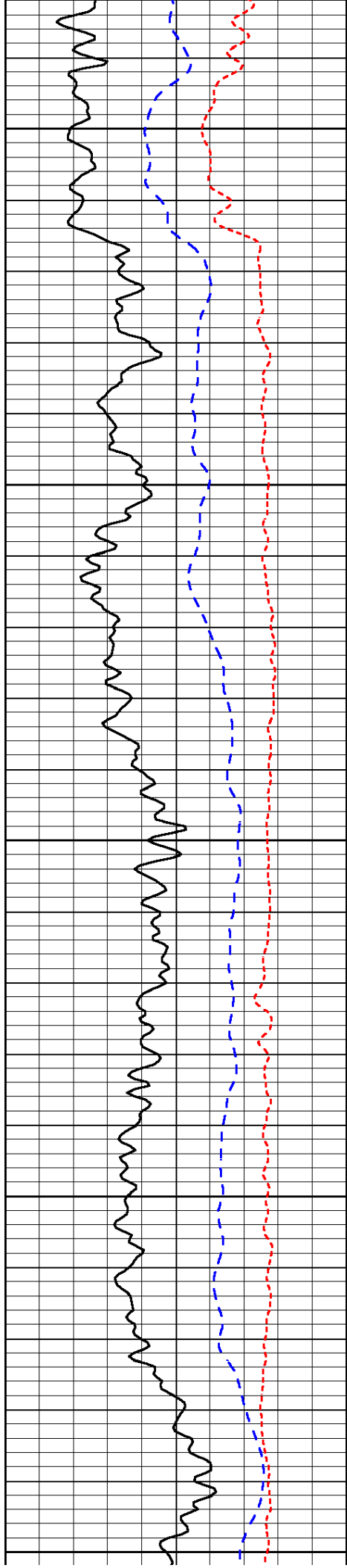


-31

-31

-35

-34



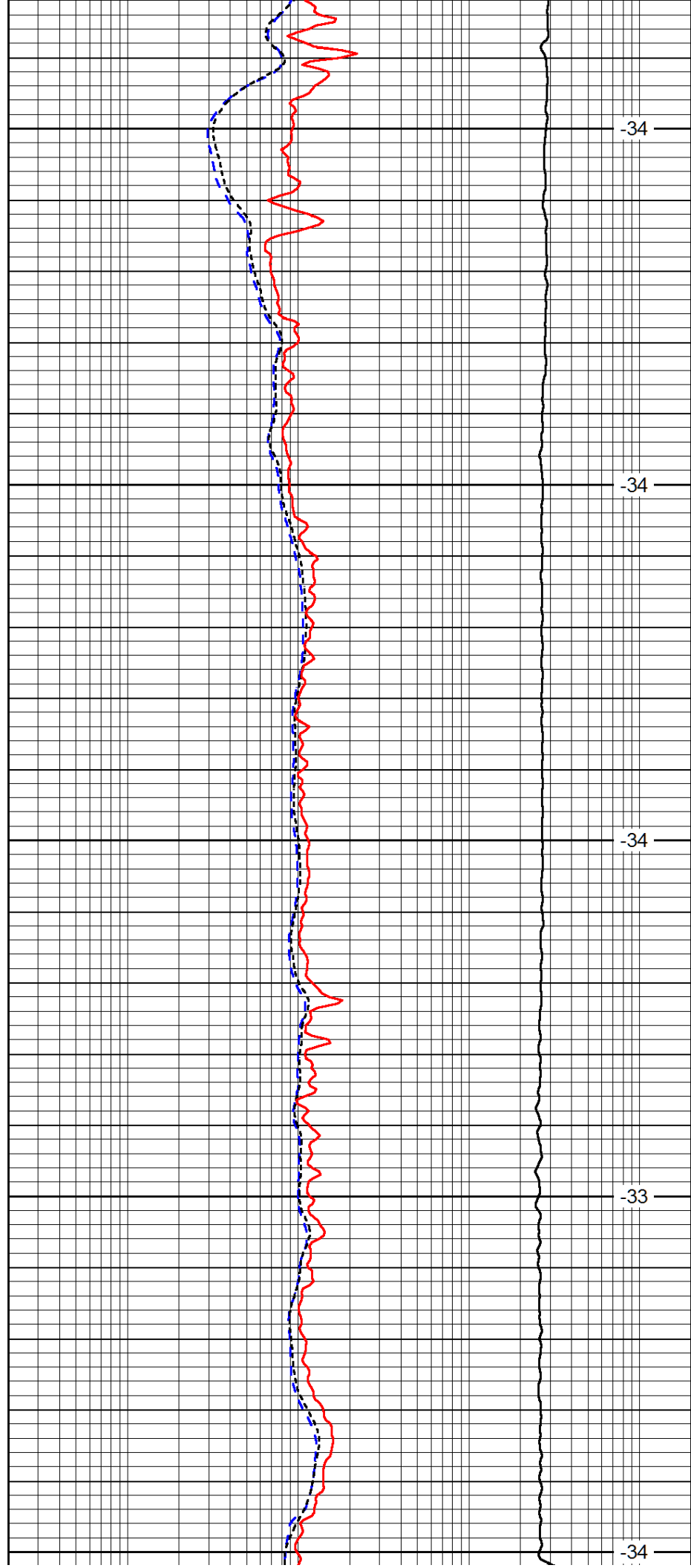
4650

4700

4750

4800

4850



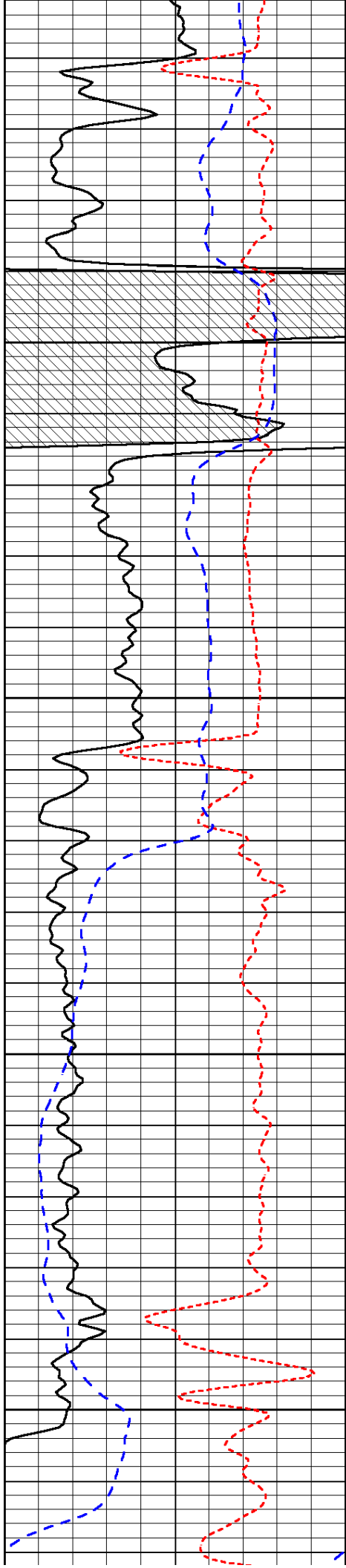
-34

-34

-34

-33

-34

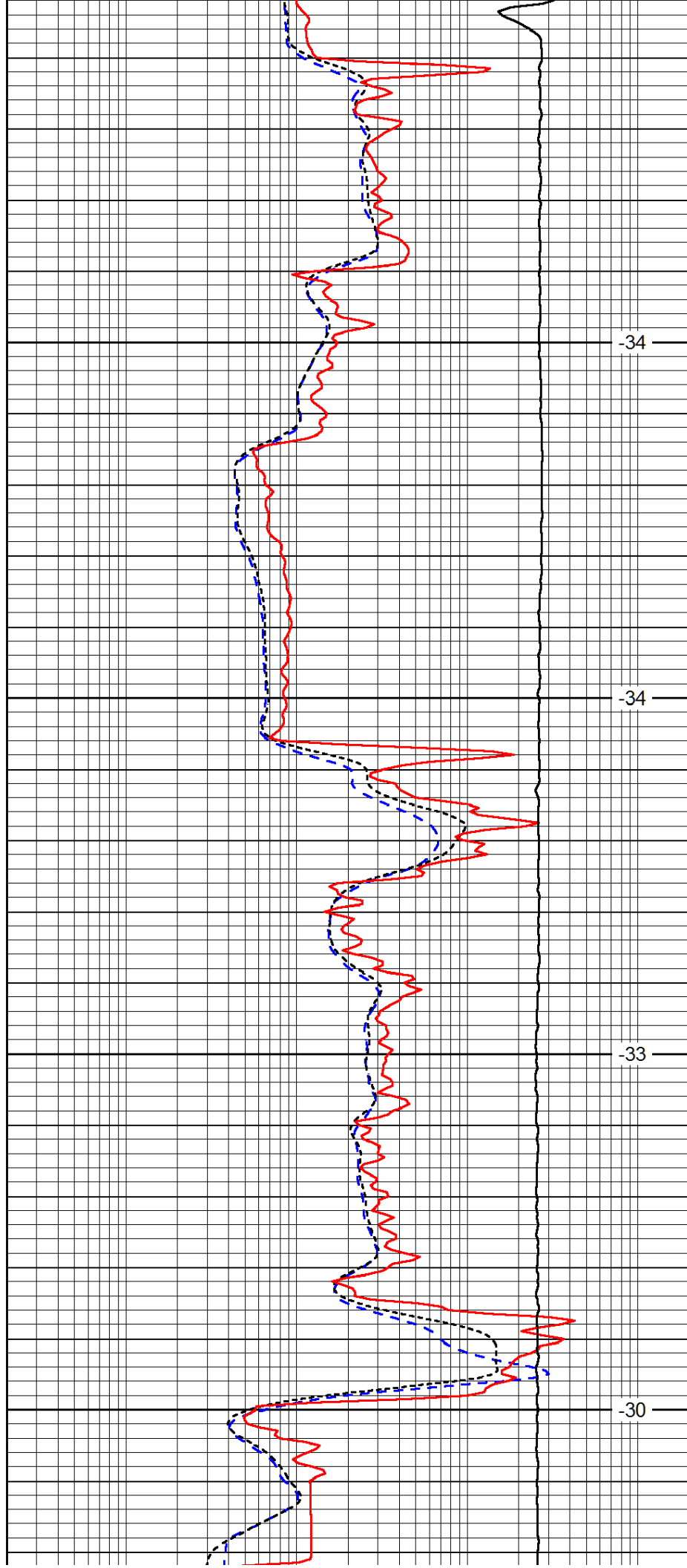


4900

4950

5000

5050



-34

-34

-33

-30

