



**MIDWEST SURVEYS**  
 LOGGING - PERFORATING - CONSULTING SERVICES  
 P.O. Box 66, Osawatomie, KS 66064  
 913.755.2128

**GAMMA RAY / NEUTRON / CCL**

File No. \_\_\_\_\_

Company **Red Cloud Exploration Operating, LLC**

Well **Reno No. 5-09**

Field **Humboldt - Chanute**

County **Woodson** State **Kansas**

Location **165' FSL & 1980' FWL**

Other Services **Perforate**

Sec. 21 Typ. 25s Fge. 17e  
 Permanent Datum GL Elevation 965'  
 Log Measured From GL  
 Drilling Measured From GL

Date 4-12-2010  
 Run Number One  
 Depth Driller 895.0  
 Depth Logger 893.0  
 Bottom Logged Interval 862.0  
 Top Log Interval 20.0  
 Fluid Level Full

Type Fluid **Water**  
 Density / Viscosity **NA**  
 Salinity - PPM Cl **NA**  
 Max. Recorded Temp **NA**  
 Estimated Cement Top **0.0**  
 Equipment No. **107** Location **Osawatomie**  
 Recorded By **Steve Mindisch**  
 Witnessed By **George Peterson**

BOREHOLE RECORD		CASINGS RECORD		TO
R/N	BIT	FROM	TO	SIZE
One	9.875"	0.0	40.0	7.00"
Two	5.925"	40.0	895.0	2.875"
				WT.
				FROM
				TO
				40.0
				871.0

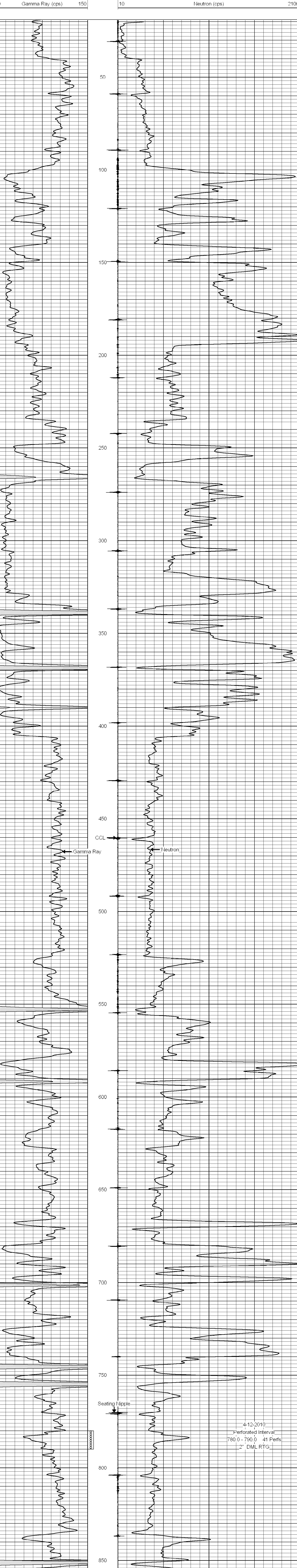
<<< Fold Here >>>

All interpretations are opinions based on inferences from electrical or other measurements and we cannot and do not guarantee the accuracy or correctness of any interpretation, and we shall not, except in the case of gross or willful negligence on our part, be liable or responsible for any loss, costs, damages, or expenses incurred or sustained by anyone resulting from any interpretation made by any of our officers, agents or employees. These interpretations are also subject to our general terms and conditions set out in our current Price Schedule.

Comments

Drilling Contractors :  
**Owens Petroleum Services, LLC**

Database File: reno5.db  
 Dataset Pathname: pass1  
 Presentation Format: gr-n-ccl  
 Dataset Creation: Mon Apr 12 11:22:07 2010 by Log Std Casedhole 07122  
 Charted by: Depth in Feet scaled 1:240



Gamma Ray (cps) 0 150 Neutron (cps) 10 2100