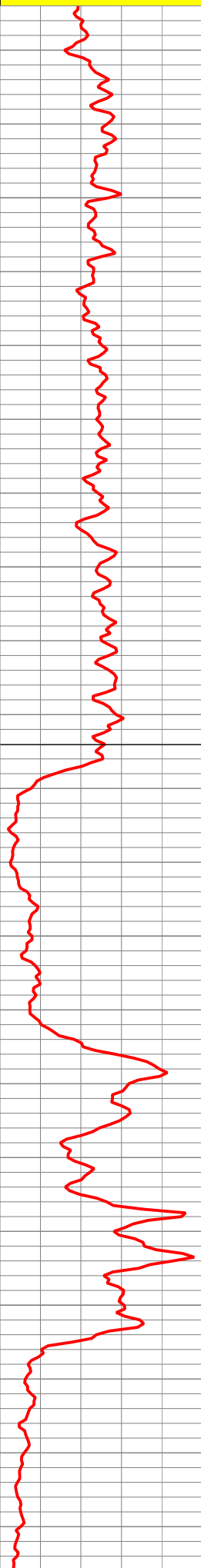


RWA>=.06

Bound Water



5000

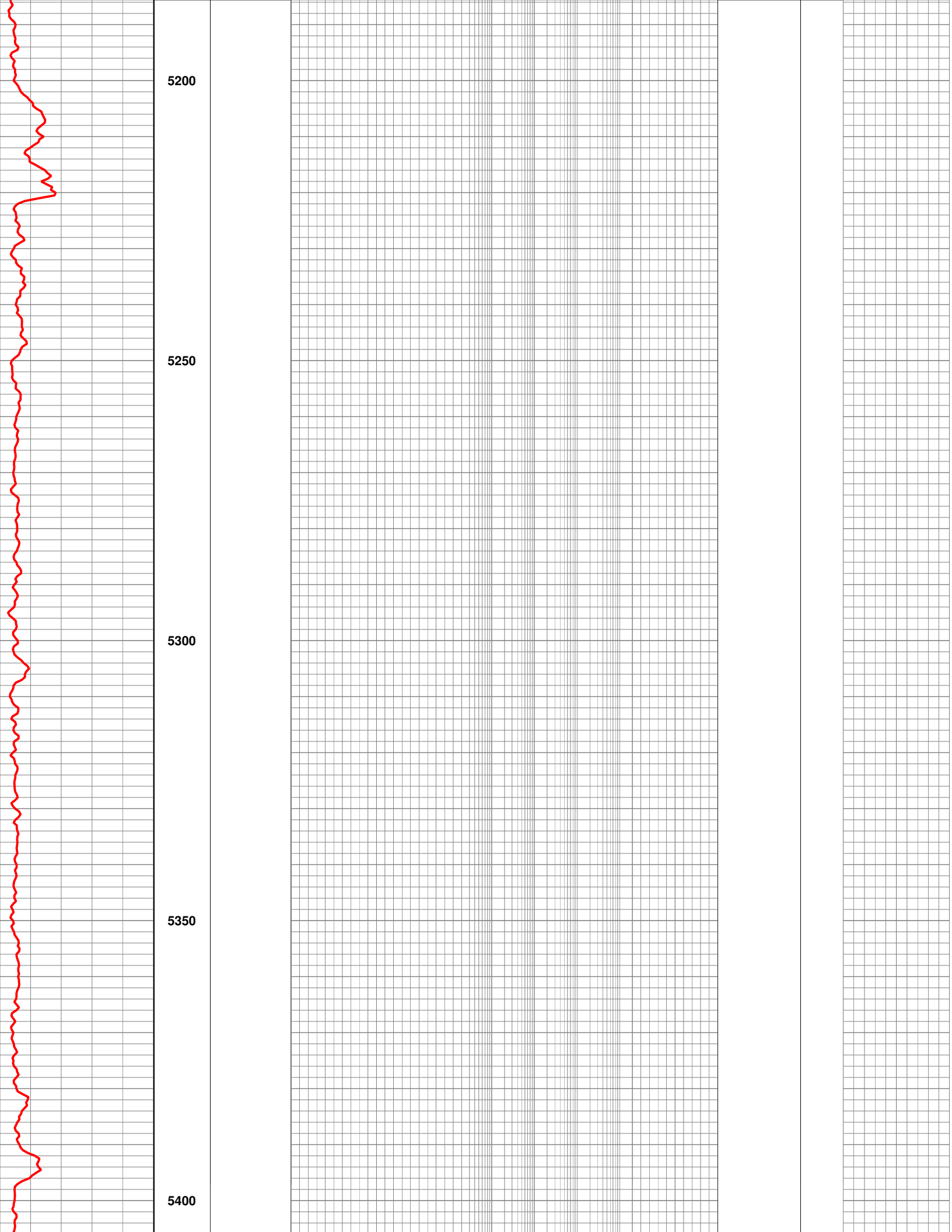
5050

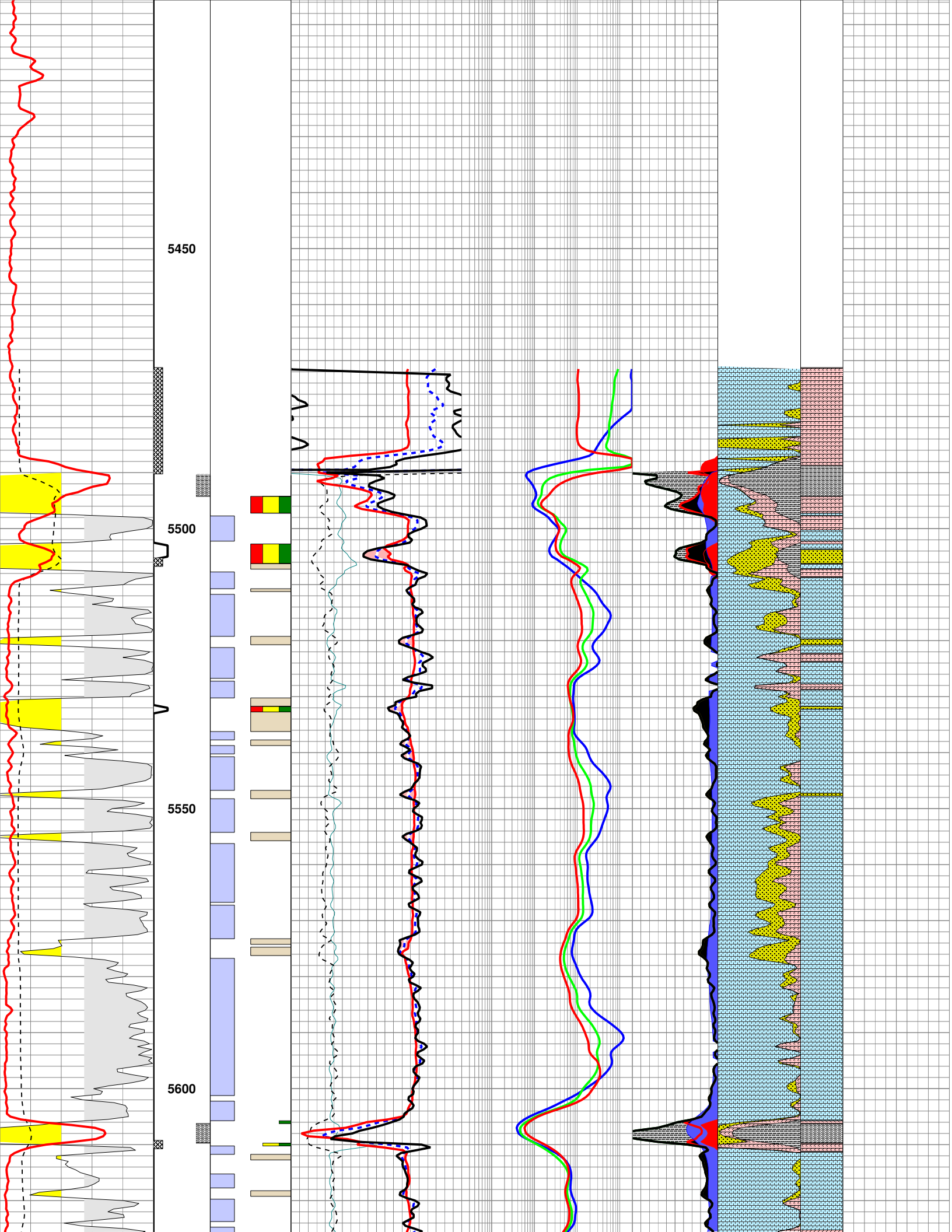
MissUnc

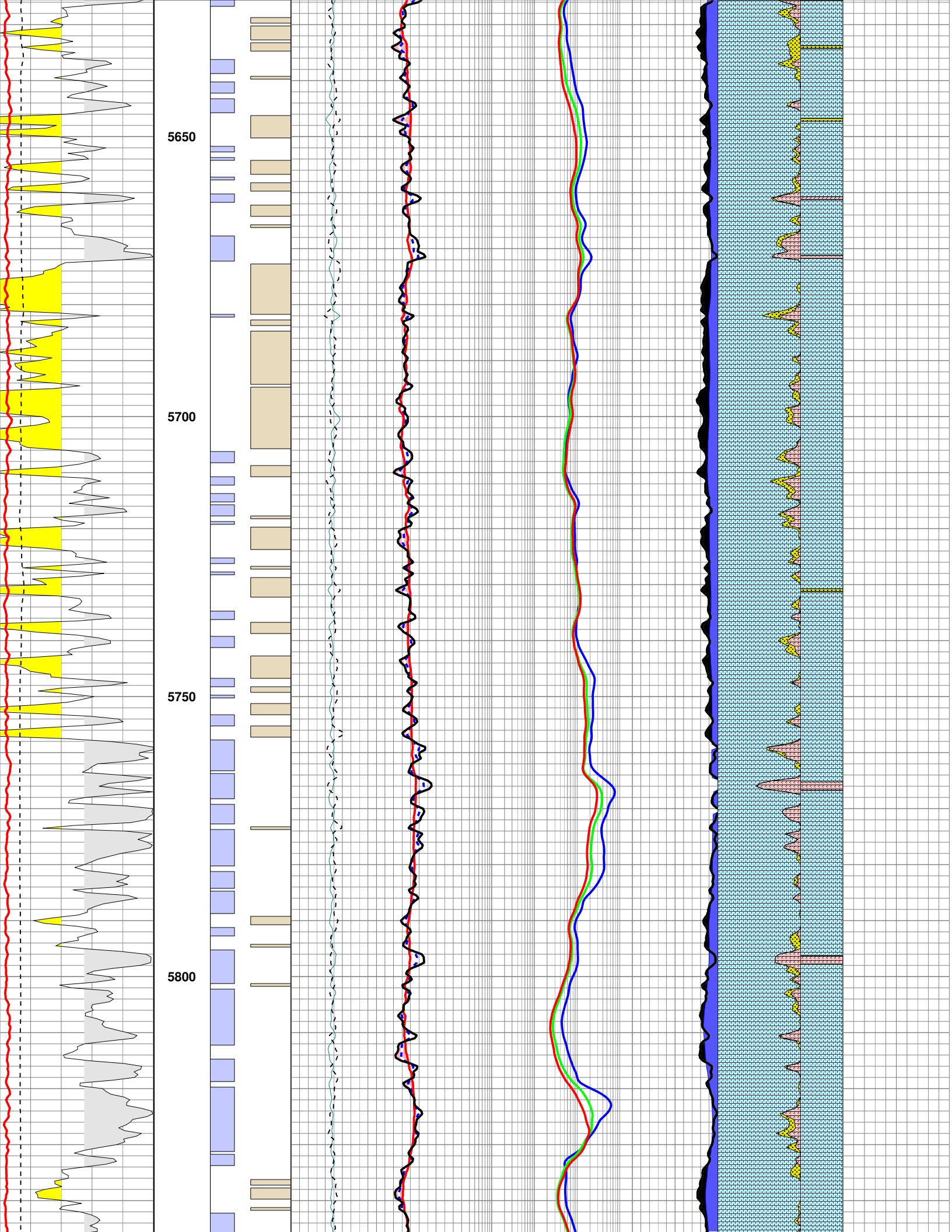
5100

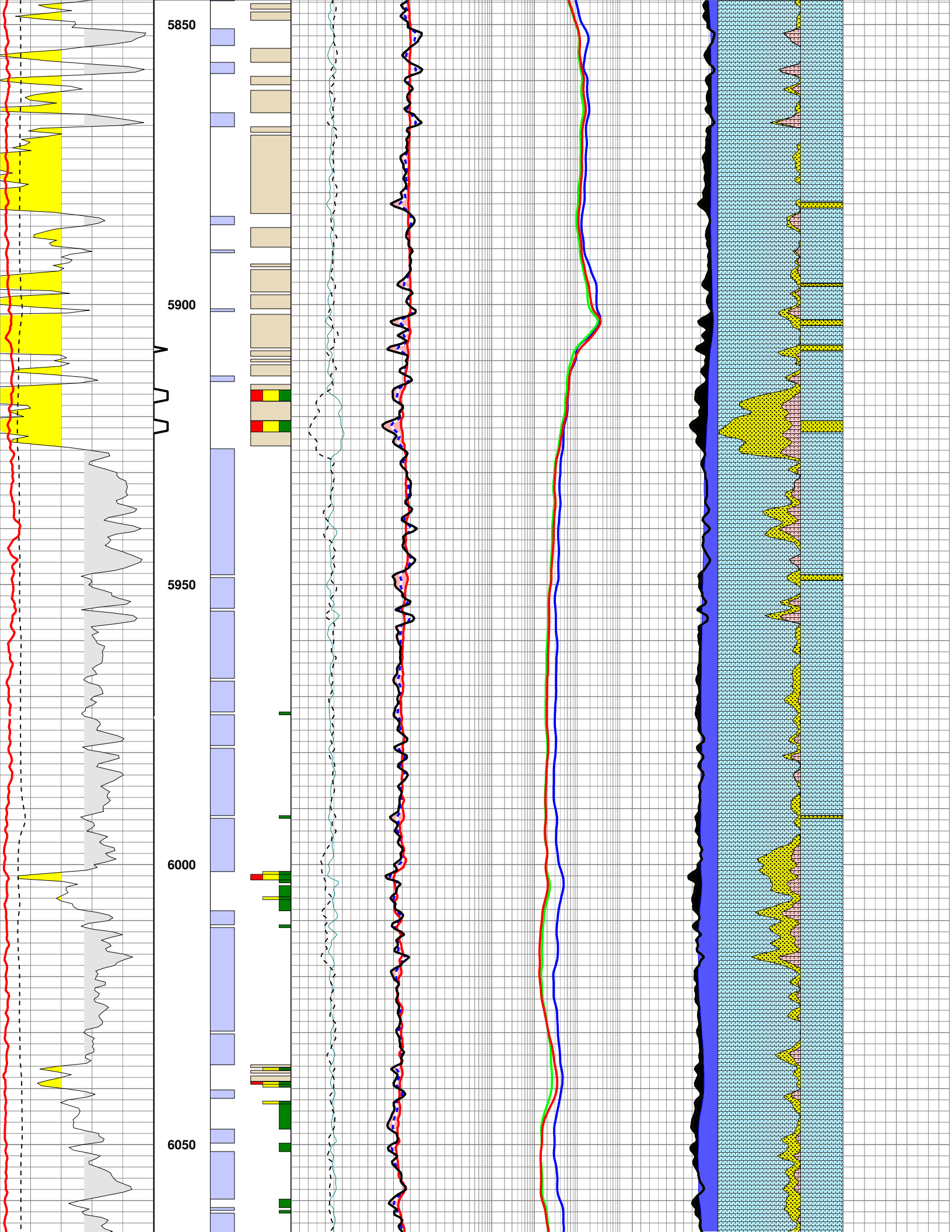
5150

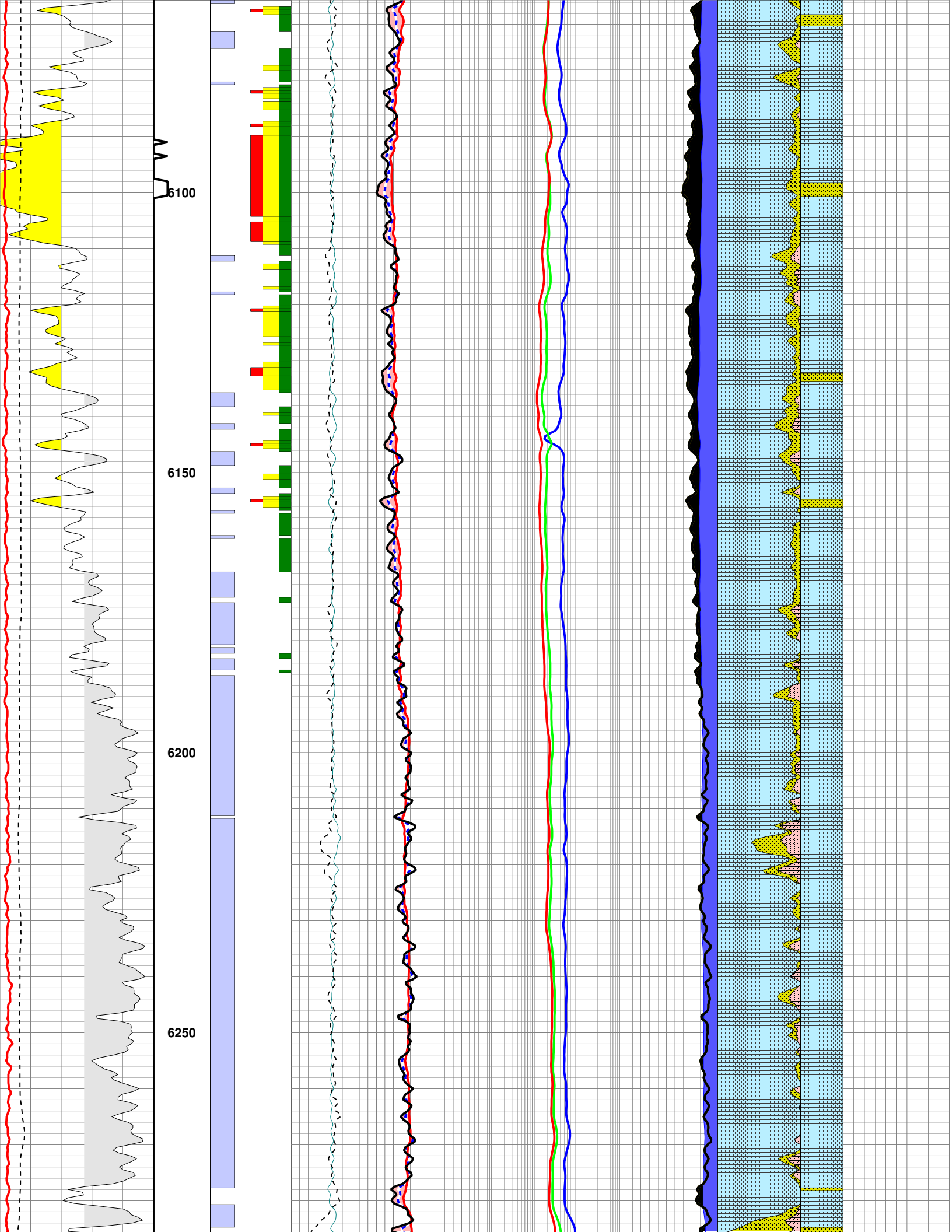


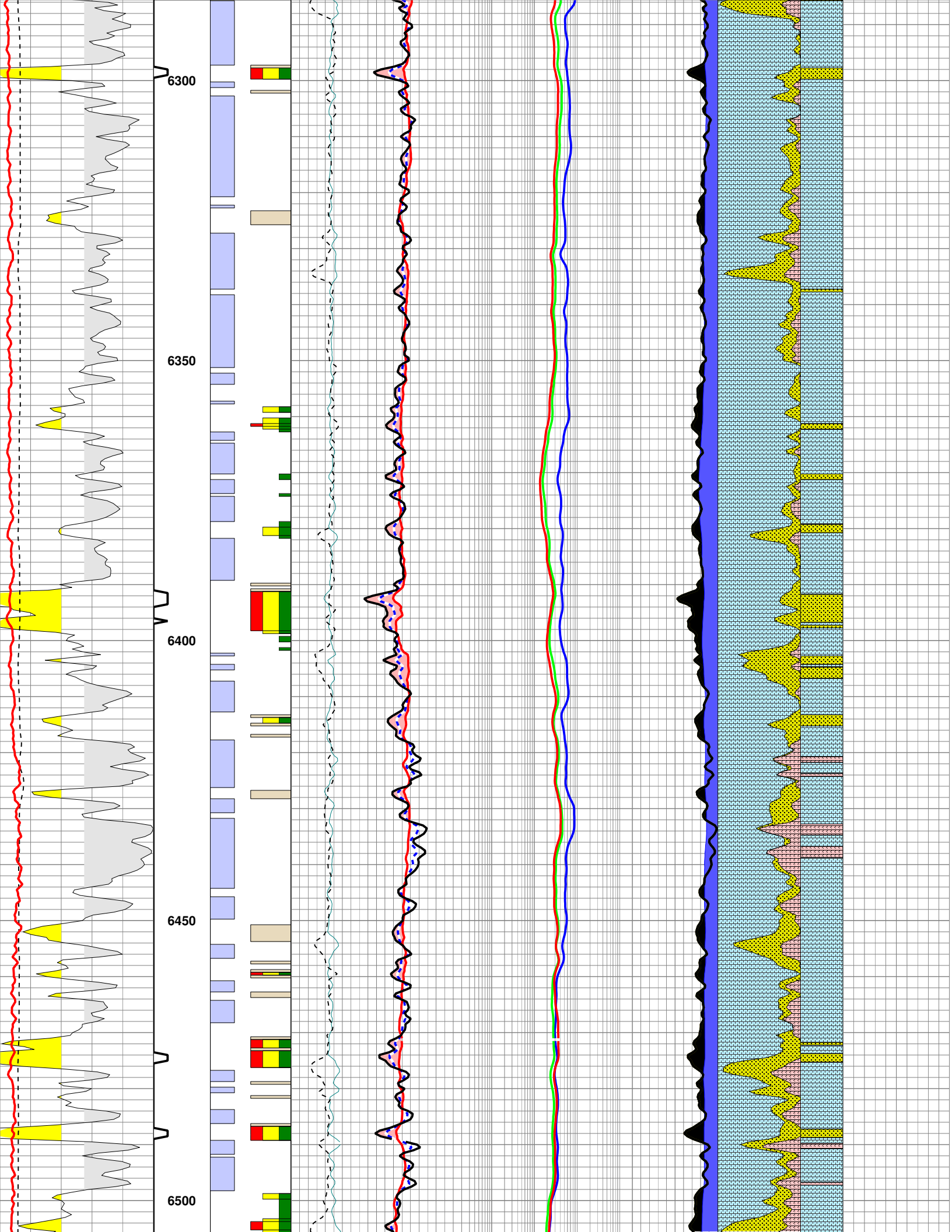


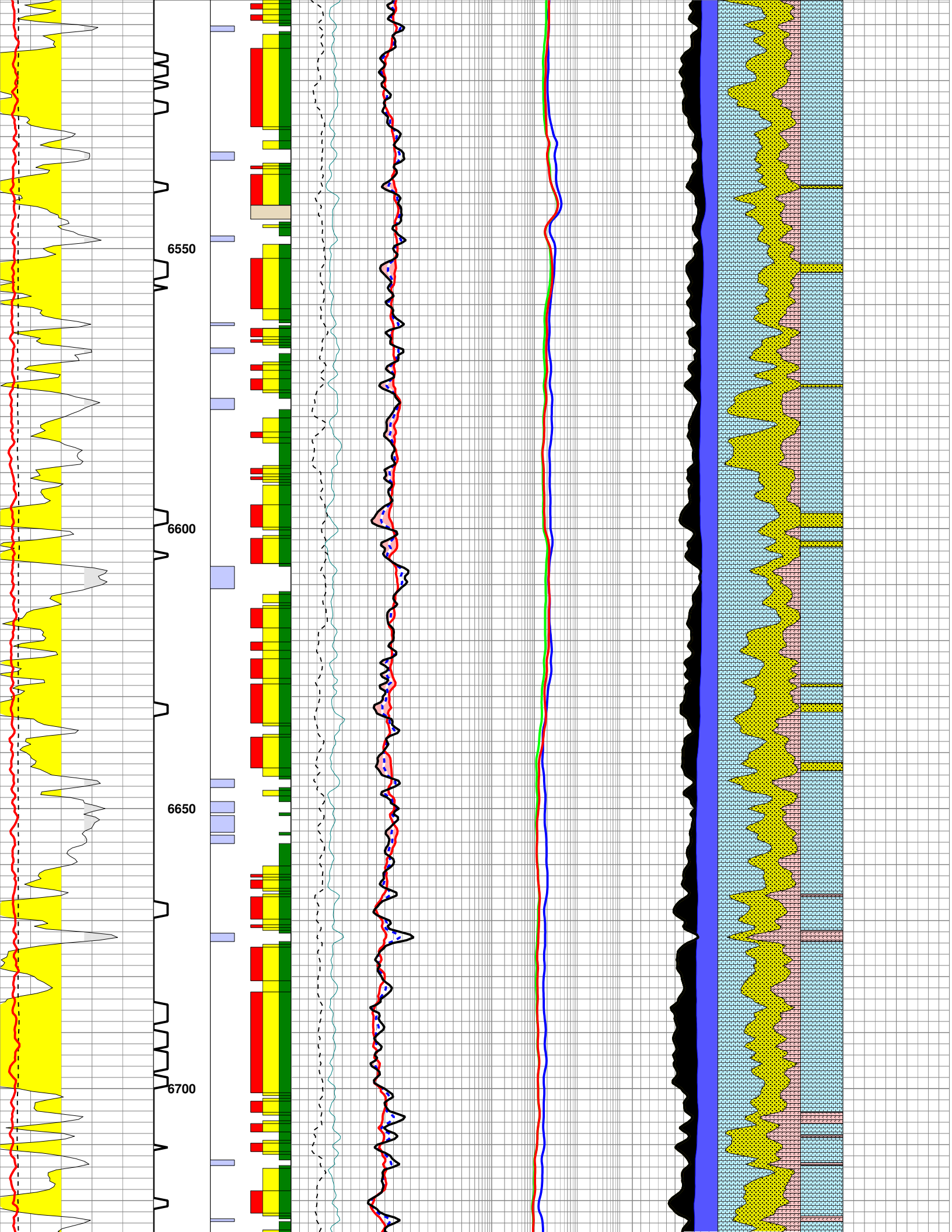


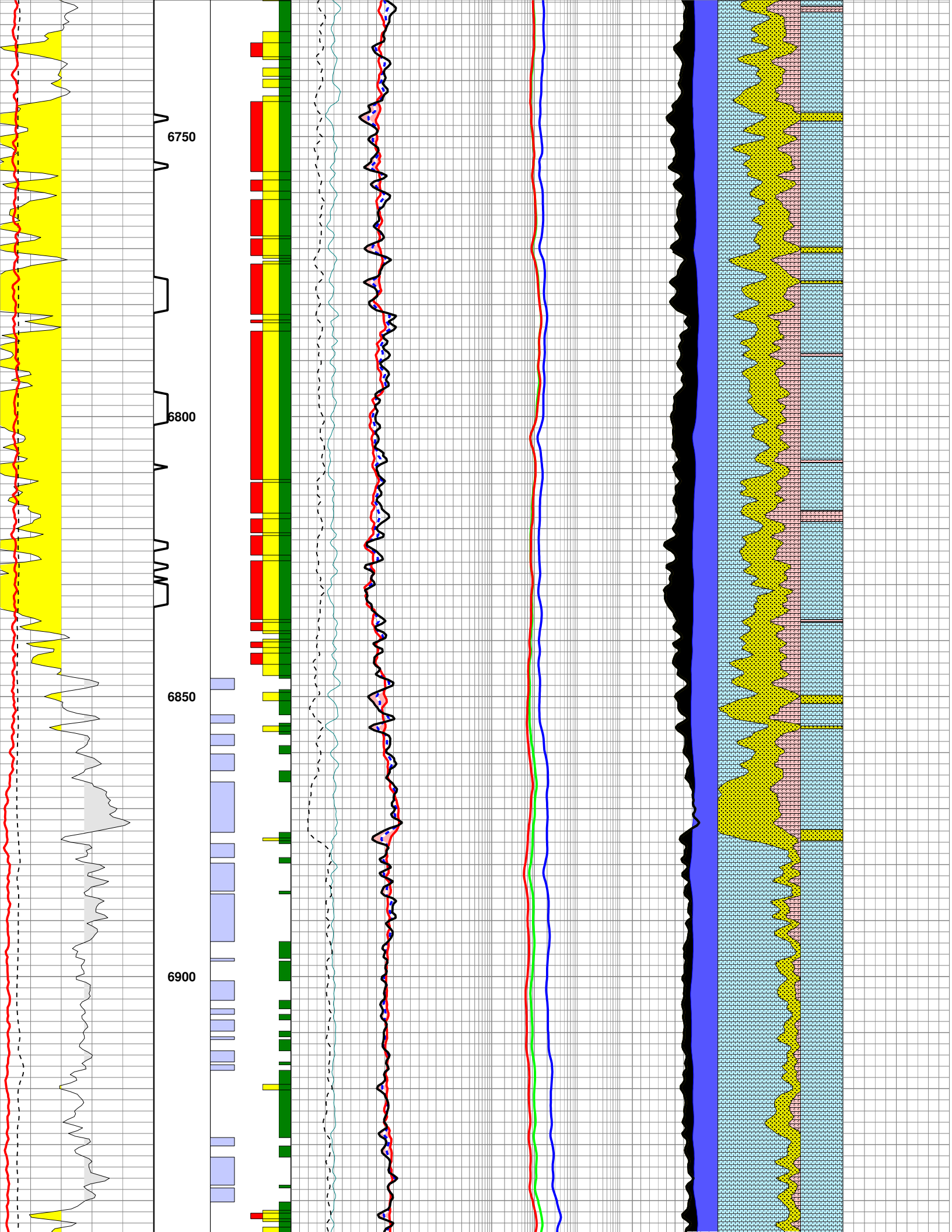


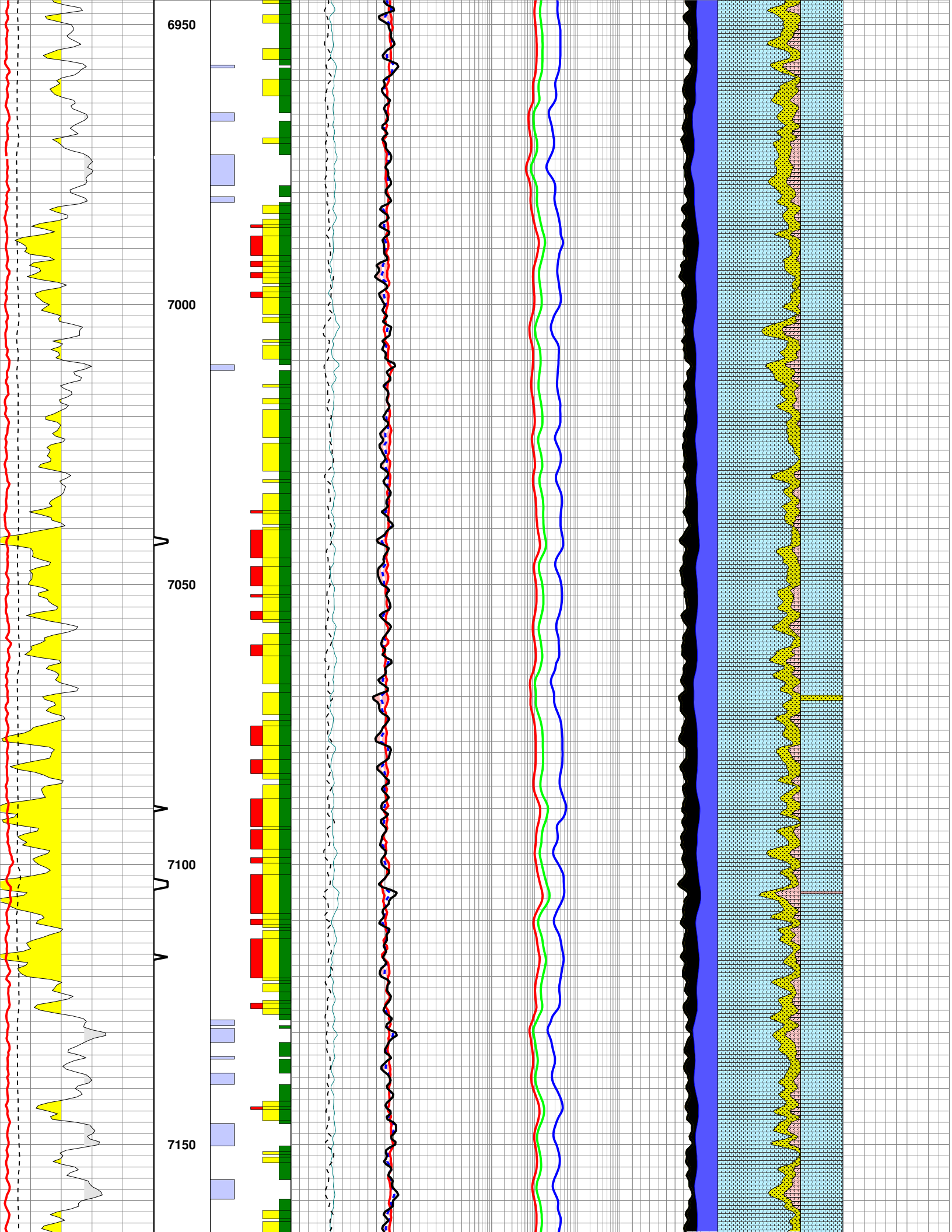


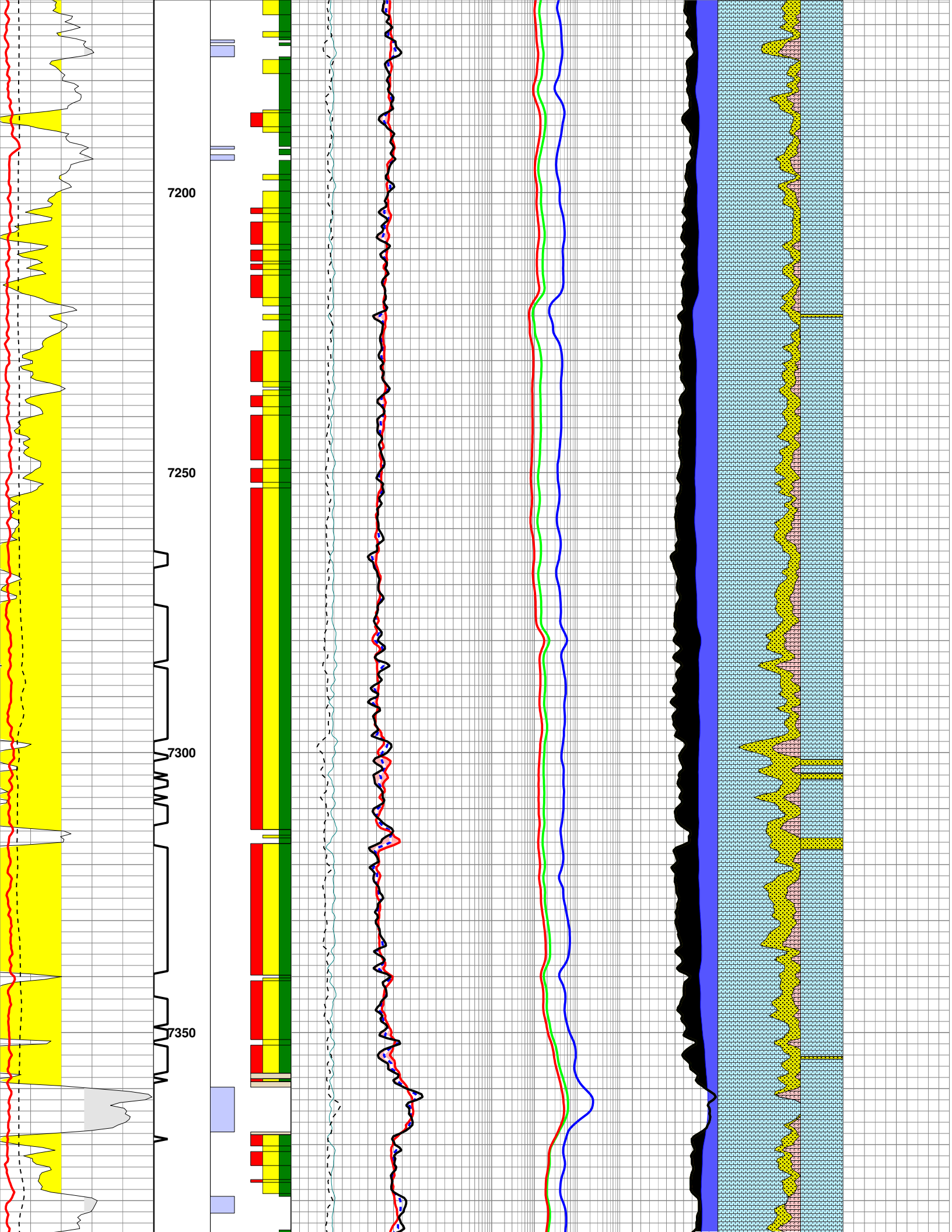


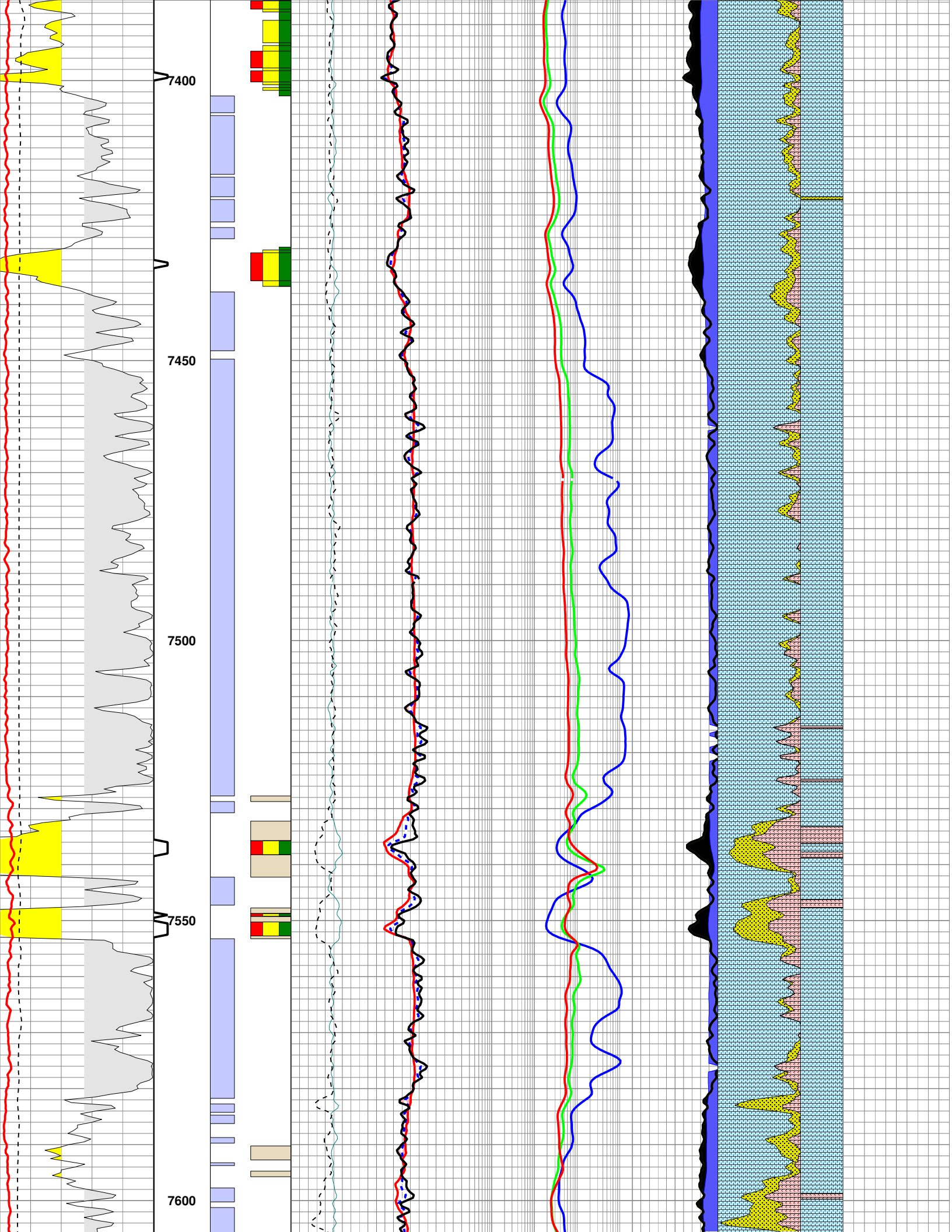


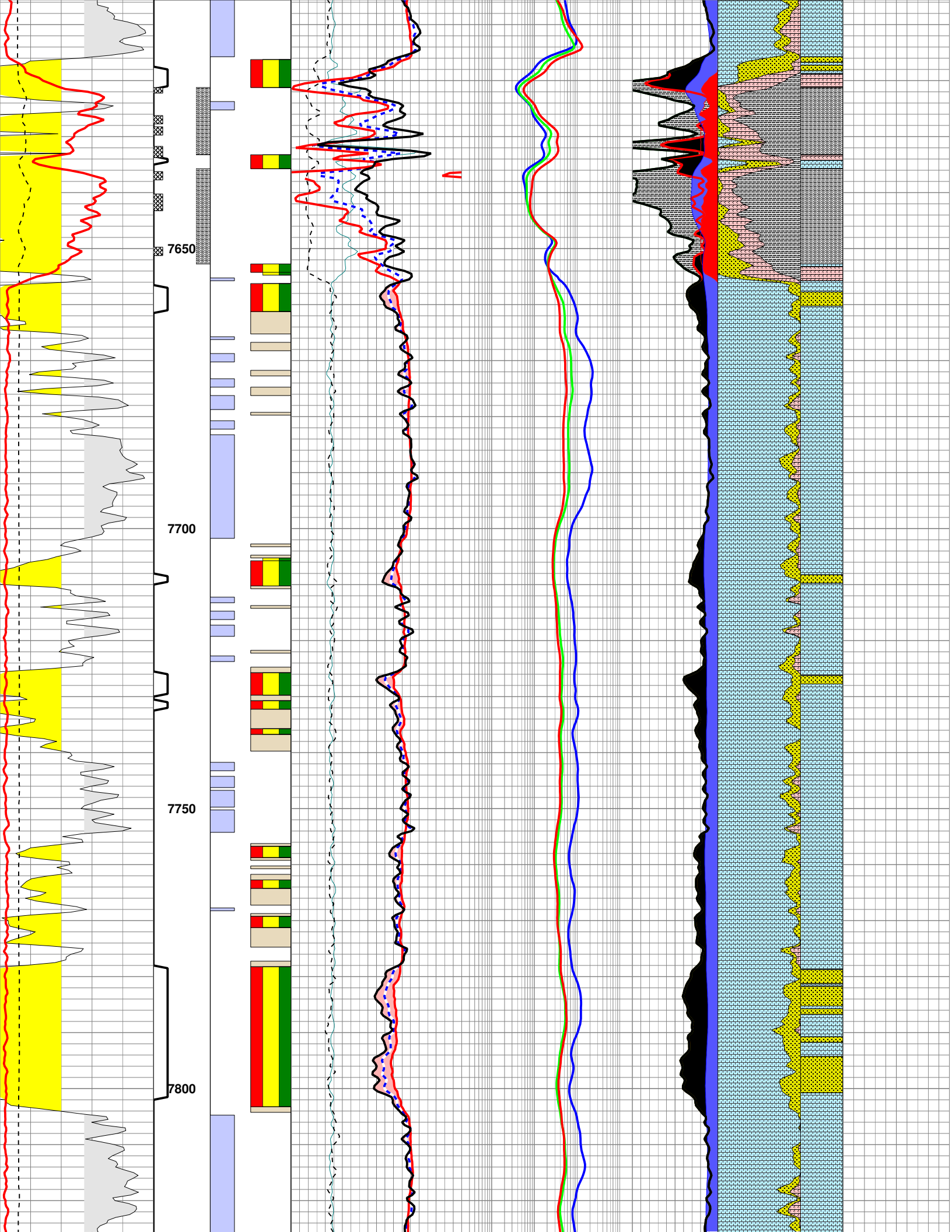


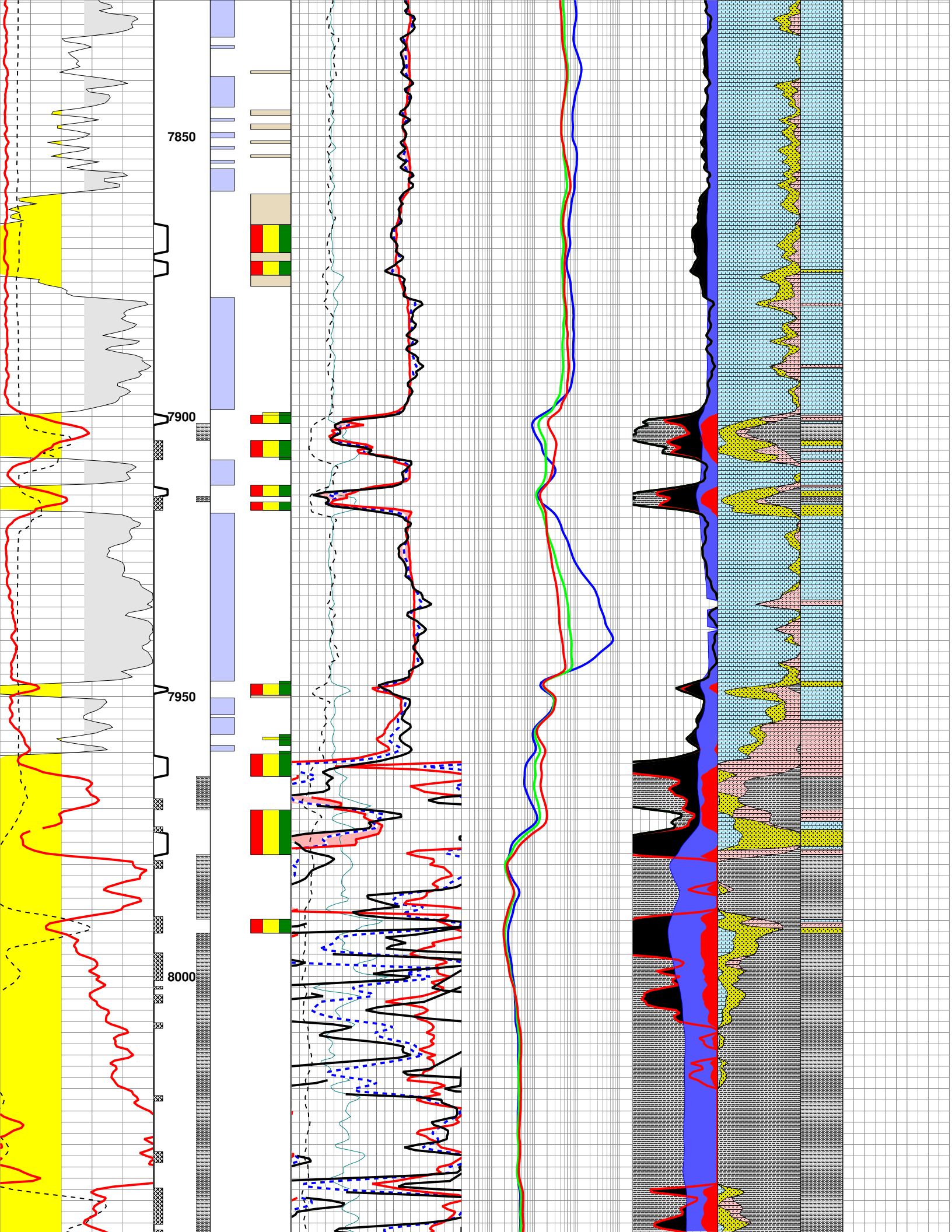


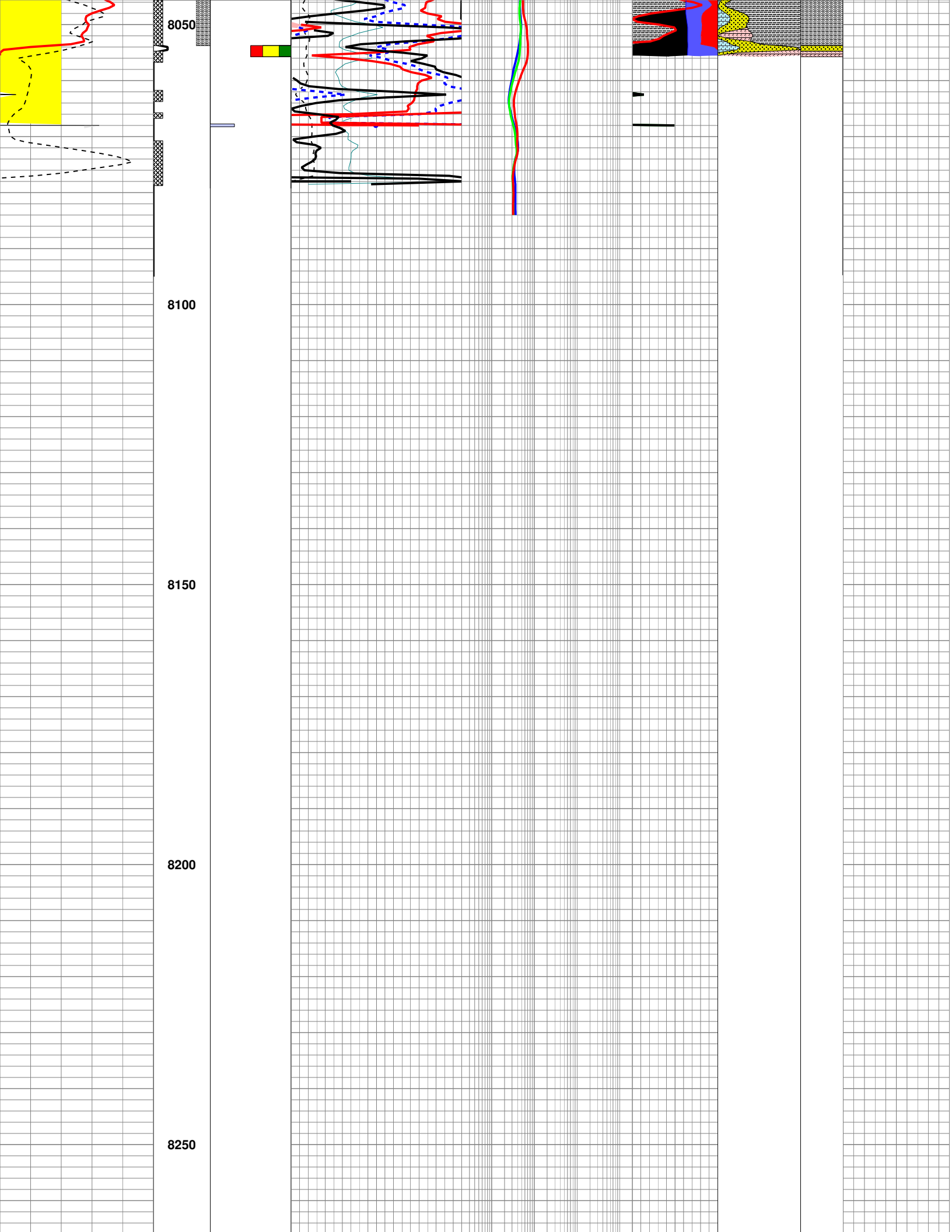












8300

8350

8400

8450

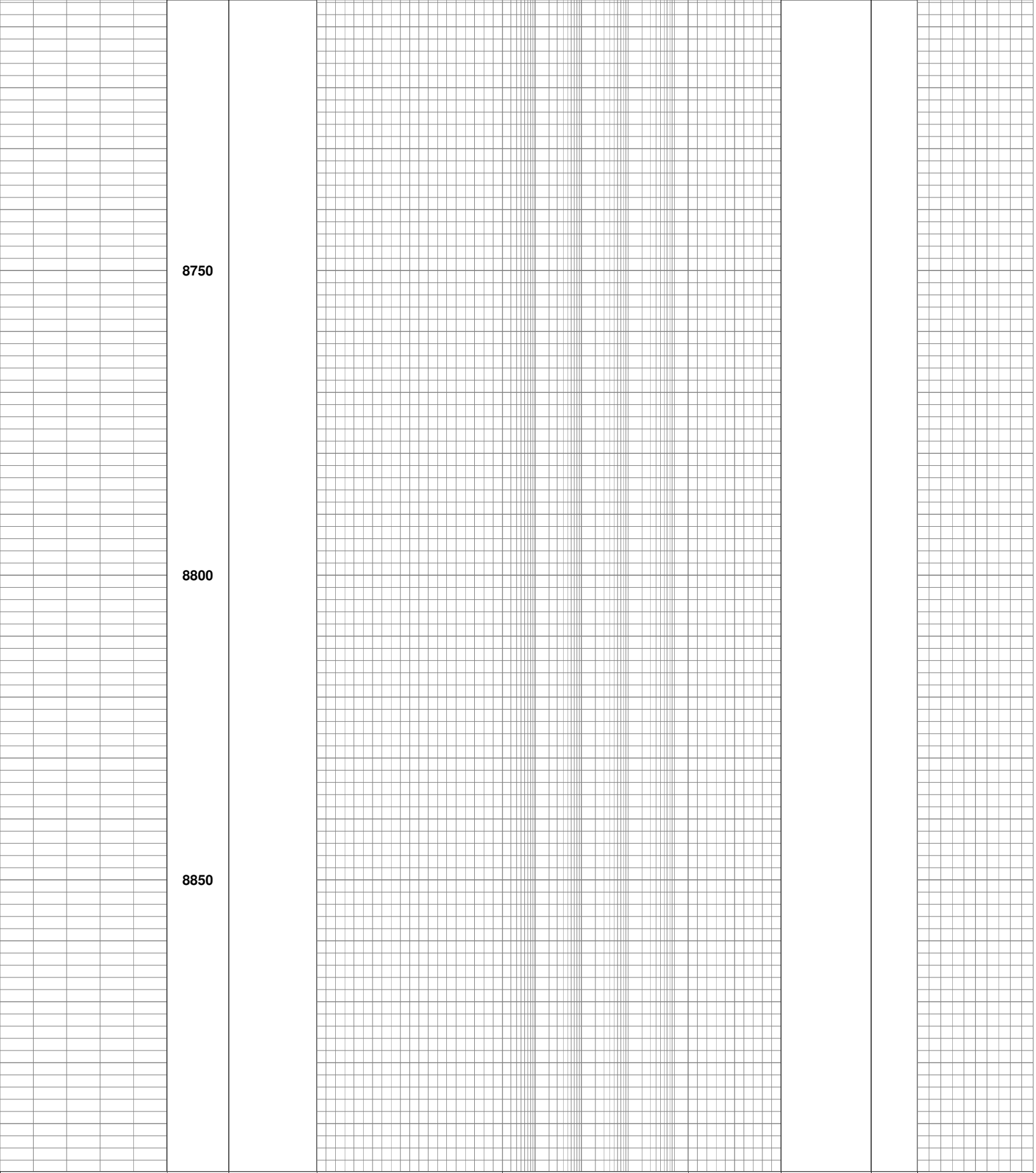
8500

8550

8600

8650

8700



8750

8800

8850

Correlation	Depth	RWA Flags	Open-Hole Porosity	Open-Hole Resistivity	Pore Space	Lithology	NT-LITH	Mudlog Data
CGR(N/A)	MD	>=.075	PHID	ResD(90IN_2FT_R)	PHIT	Sandstone	Sandstone	C1(N/A)
0 150			0.3 -0.10.2	OHM-M 2000.00.2	0		0.0 250	
GR	BHF	>=.06	PHIN	ResM(30IN_2FT_R)	PHIA	Limestone	Limestone	C2(N/A)
GAPI 150			0.3 -0.10.2	OHM-M 2000.00.20	0		0.0 250	
GRPO(N/A)			SXP	ResS(10IN_2FT_R)	BVW			C3(N/A)

GRTH(N/A)	150	Vshl > .4	>=.045	0.3	-0.10.2	OHM-M	2000.00.2	0	Dolomite	Dolomite	0.0	250
GRTH(N/A)	150	<.045	PEF					PHIE	Clay	Shale	0.0	250
GRUR(N/A)	150	Tight Pay	BARN	20				0.20			0.0	250
GRUR(N/A)	150		DRHO					BVWb				OIL_CURVE
CALI(DCAL)	150		G/CC	0.75				0.2			0.0	1
IN	15		Crossover					Hydrocarbon				ROP2
RWA_SXP	0.1										150	0
RWA<.045								Clay Water				
RWA>=.06								Bound Water				