



Pioneer Energy Services

# Dual Induction Log

15-007-24,165-00-00

API No.

Company N-10 Exploration, LLC

Well Medicine River Ranch 'B' #14

Field Landis

County Barber State

Kansas

Location

825' FSL & 1980' FEL

Other Services  
CNL/CDL

Sec: 15 Twp: 34S Rge: 11W

Permanent Datum Ground Level Elevation 1337  
Log Measured From Kelly Bushing 10 Ft. Above Perm. Datum  
Drilling Measured From Kelly Bushing

Elevation  
K.B. 1347  
D.F. 1337  
G.L. 1337

Date 5/17/2014

Run Number One

Depth Driller 5046

Depth Logger 5046

Bottom Logged Interval 5045

Top Log Interval 250

Casing Driller 8.625 @ 268

Casing Logger 268

Bit Size 7.875

Type Fluid in Hole Chemical

Salinity, ppm CL 3,000

Density / Viscosity 9.5 50

pH / Fluid Loss 10.5 8.8

Source of Sample Flowline

Rm @ Meas. Temp .75 @ 65

Rmf @ Meas. Temp .56 @ 65

Rmc @ Meas. Temp 1.01 @ 65

Source of Rmf / Rmc Charts

Rm @ BHT .39 @ 126

Operating Rig Time 2 1/2 Hours

Max Rec. Temp. F 126

Equipment Number 17

Location Hays

Recorded By C. Desai

Witnessed By Tim Pierce

<<< Fold Here >>>

All interpretations are opinions based on inferences from electrical or other measurements and we cannot and do not guarantee the accuracy or correctness of any interpretation, and we shall not, except in the case of gross or willful negligence on our part, be liable or responsible for any loss, costs, damages, or expenses incurred or sustained by anyone resulting from any interpretation made by any of our officers, agents or employees. These interpretations are also subject to our general terms and conditions set out in our current Price Schedule.

## Comments

Thank you for using Pioneer Energy Services  
[www.pioneerenergy.com](http://www.pioneerenergy.com)  
 785 625 3858  
 Medicine Lodge KS, S to Scott Canyon Rd,  
 3 E and over cattle guard, E & S across river, Left at fork,  
 Right at fork, 1/2 E, 1/4 S Into

Database File: c:\warrior\data\n-10\_medicine river ranch 'b' #14\n10hd.db  
 Dataset Pathname: dil\n10stk  
 Presentation Format: dil2in  
 Dataset Creation: Sat May 17 17:13:05 2014  
 Charted by: Depth in Feet scaled 1:600

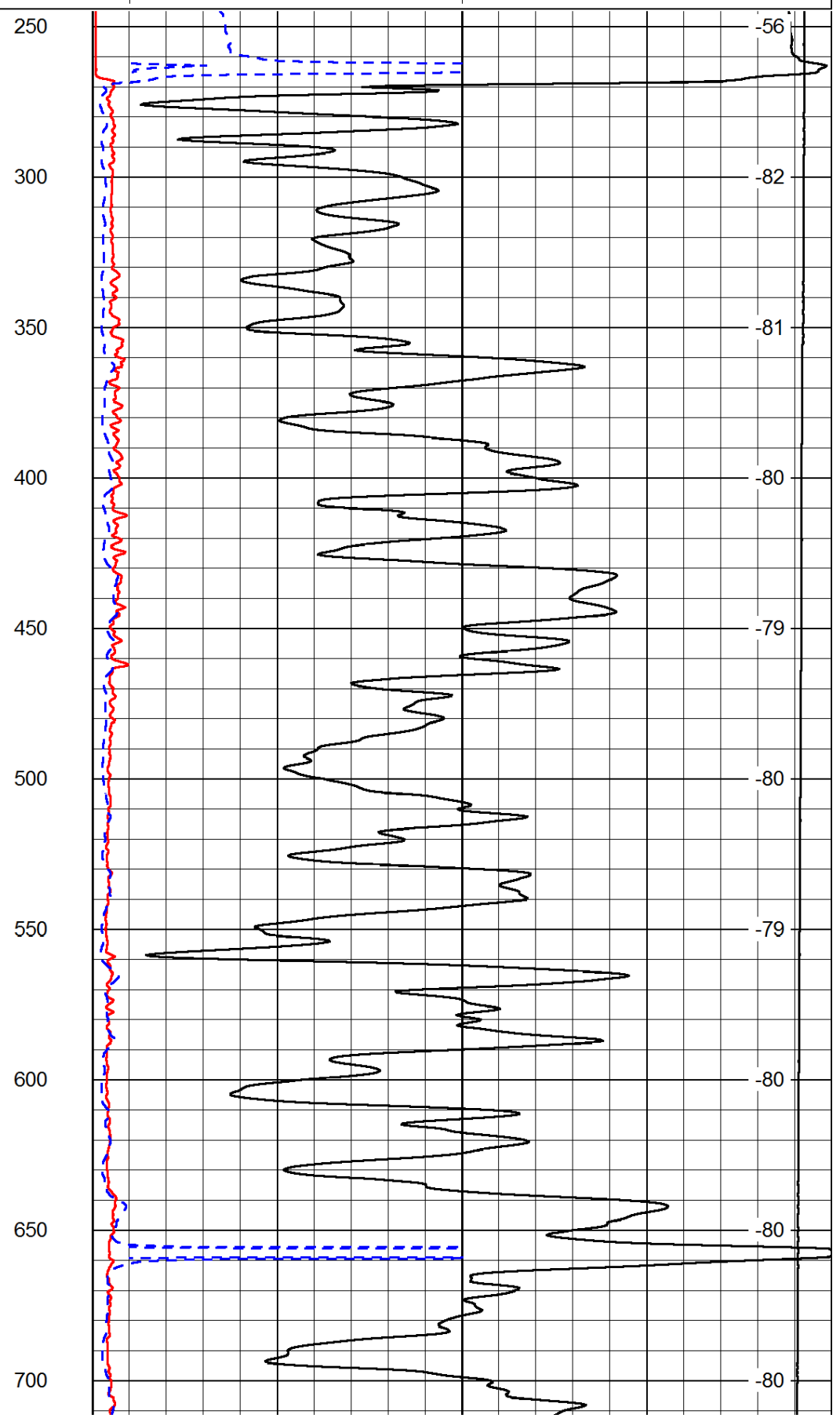
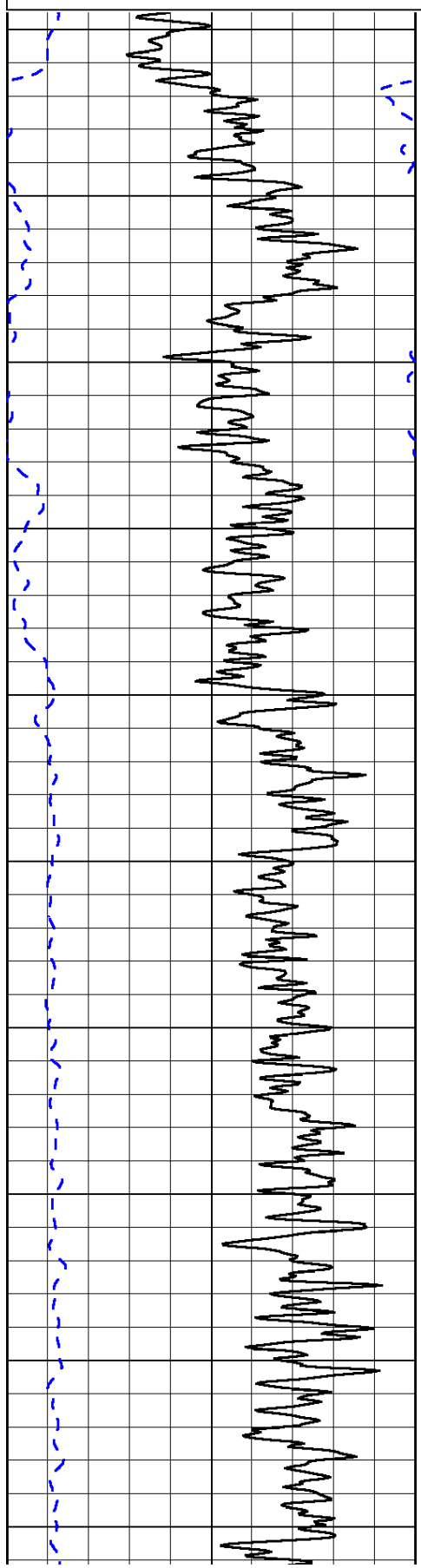
0	Gamma Ray	150
-200	SP (mV)	0

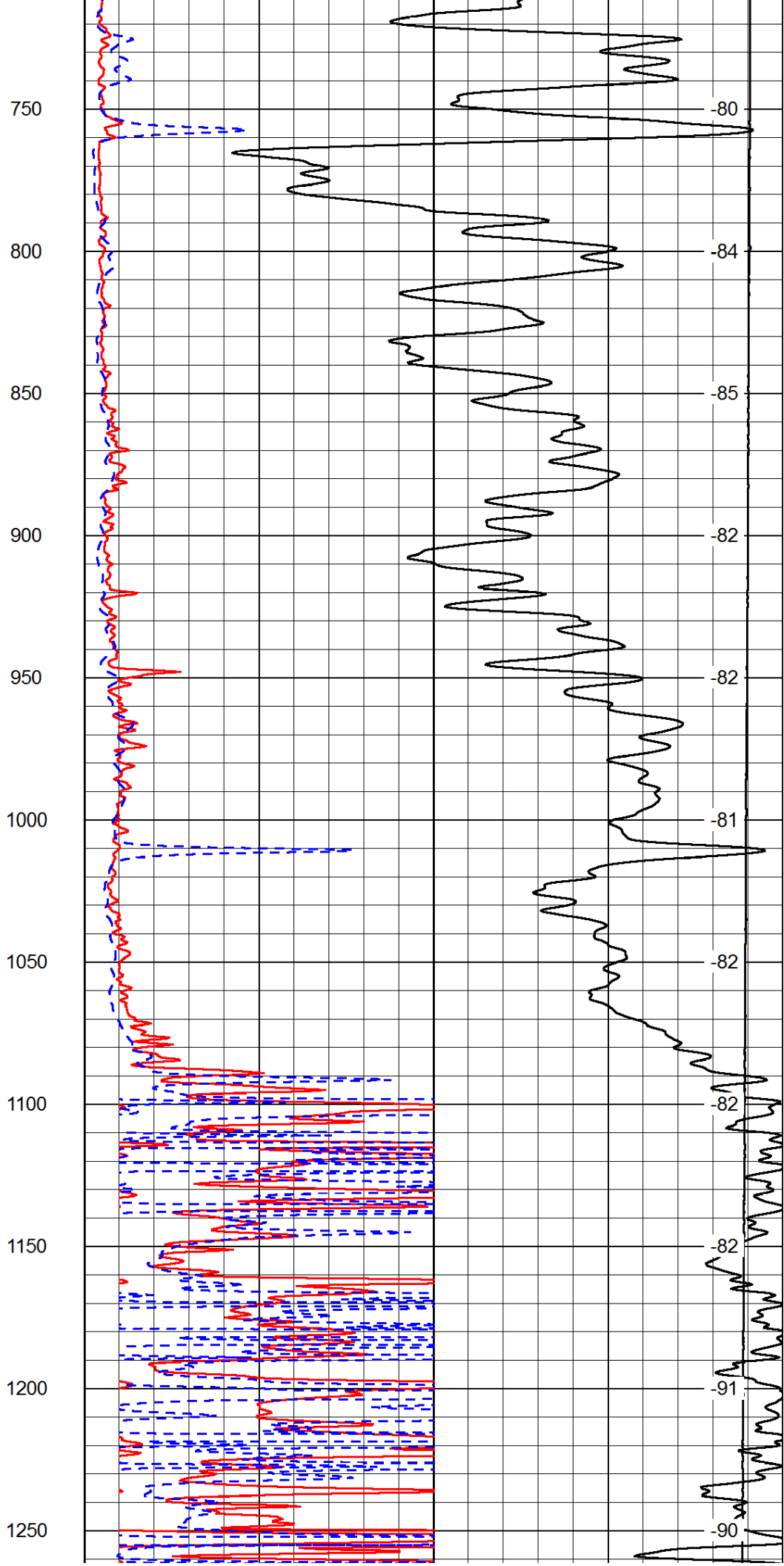
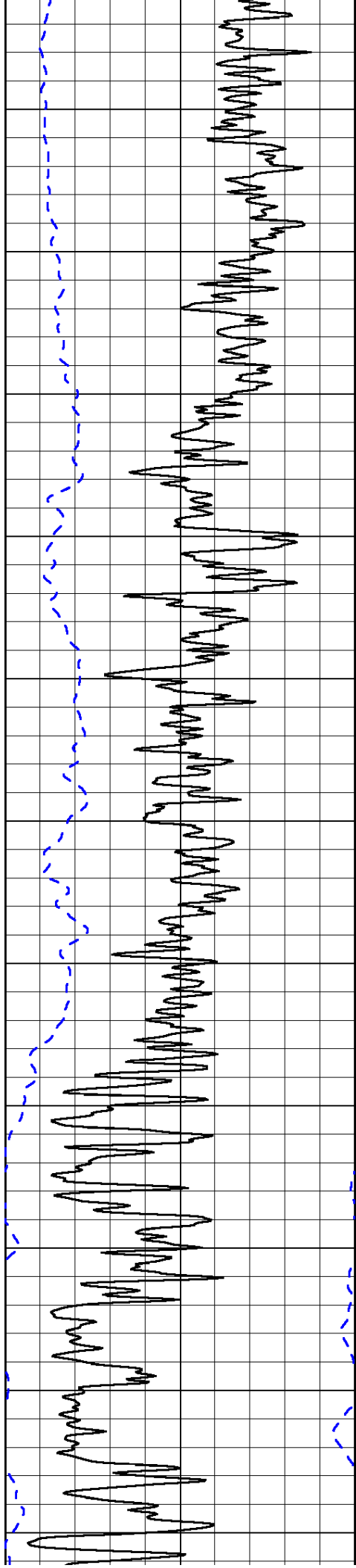
0	Shallow Resistivity	50
0	Deep Resistivity	50

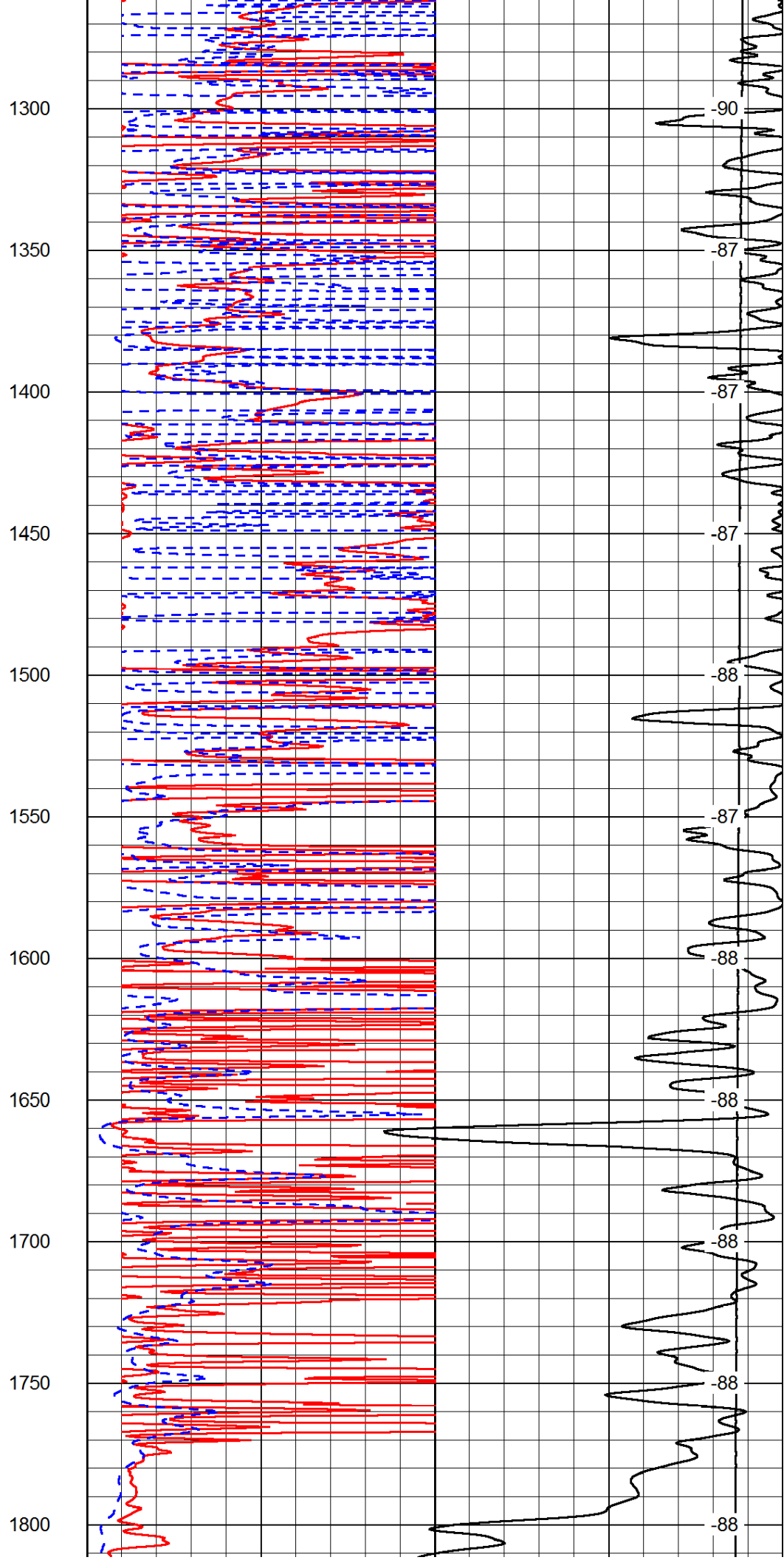
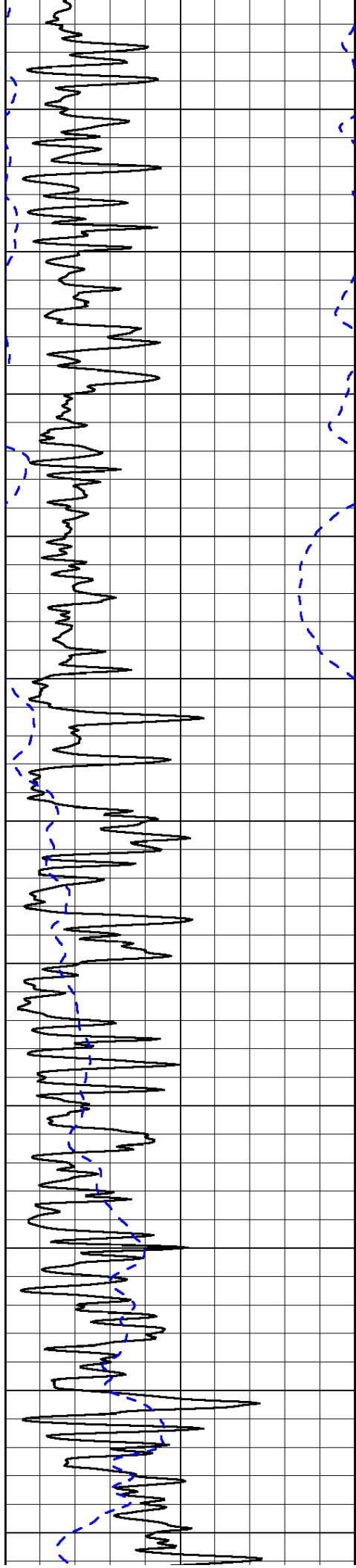
LSPD

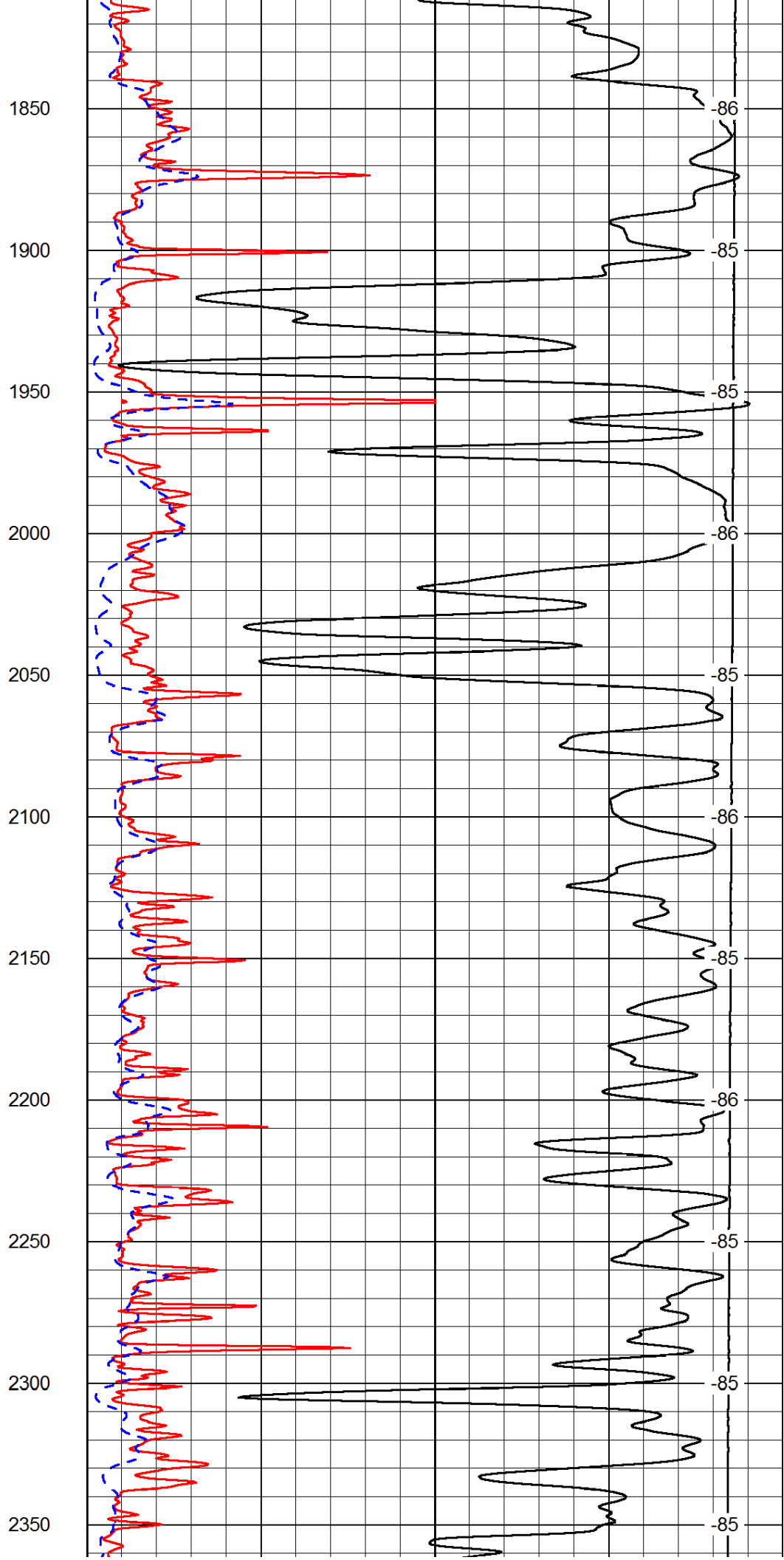
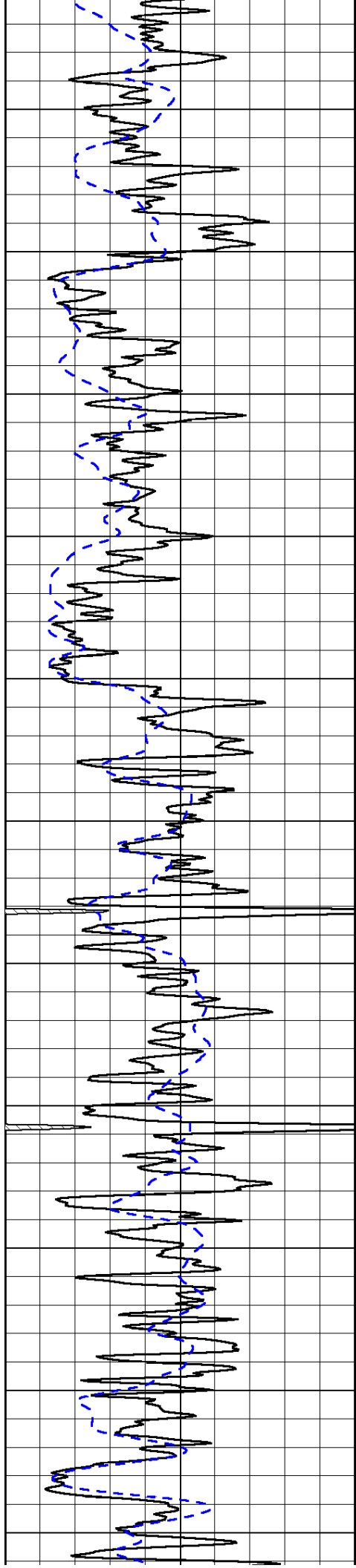
1000	Conductivity	0
15000	Line Tension	0

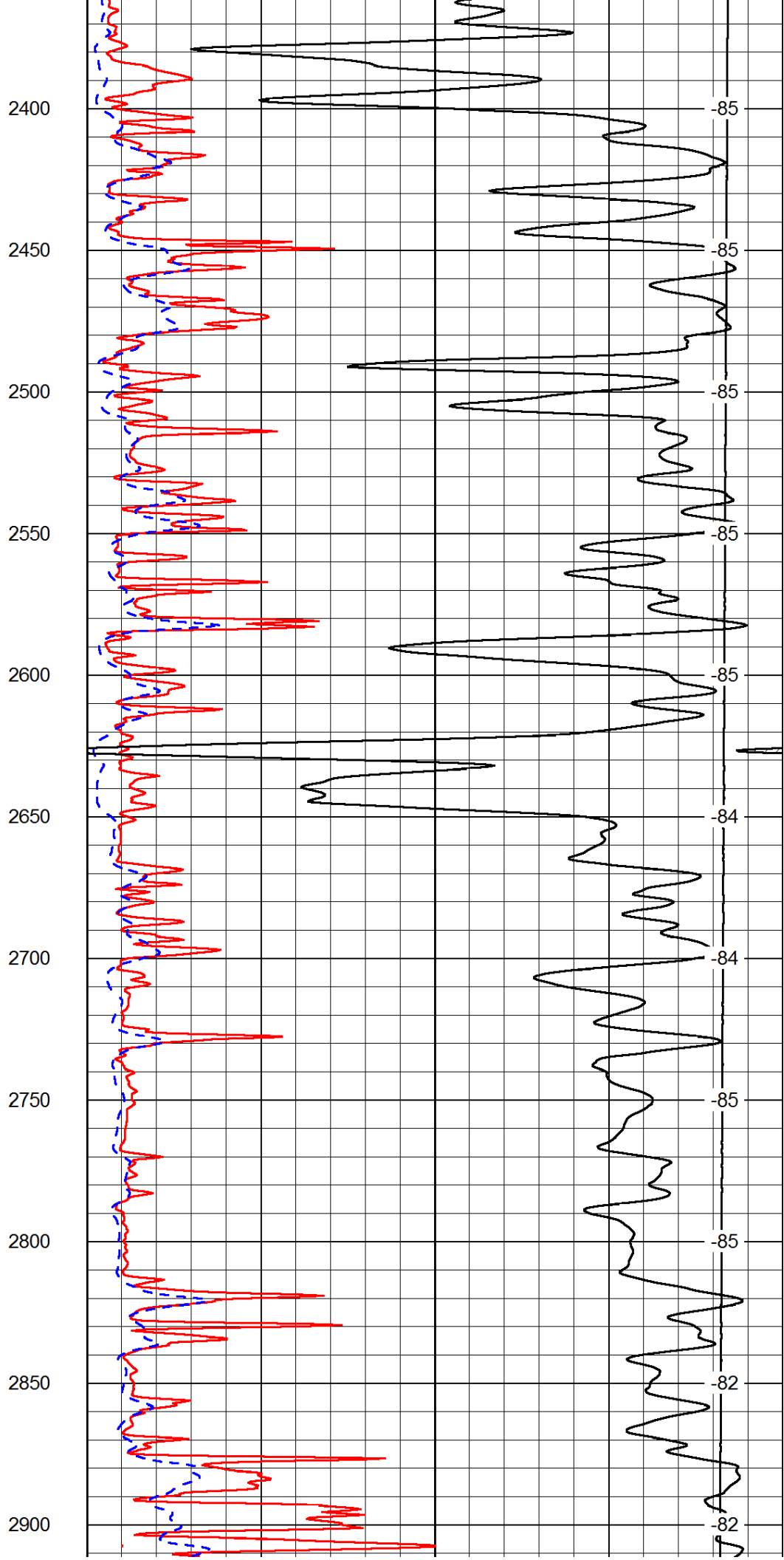
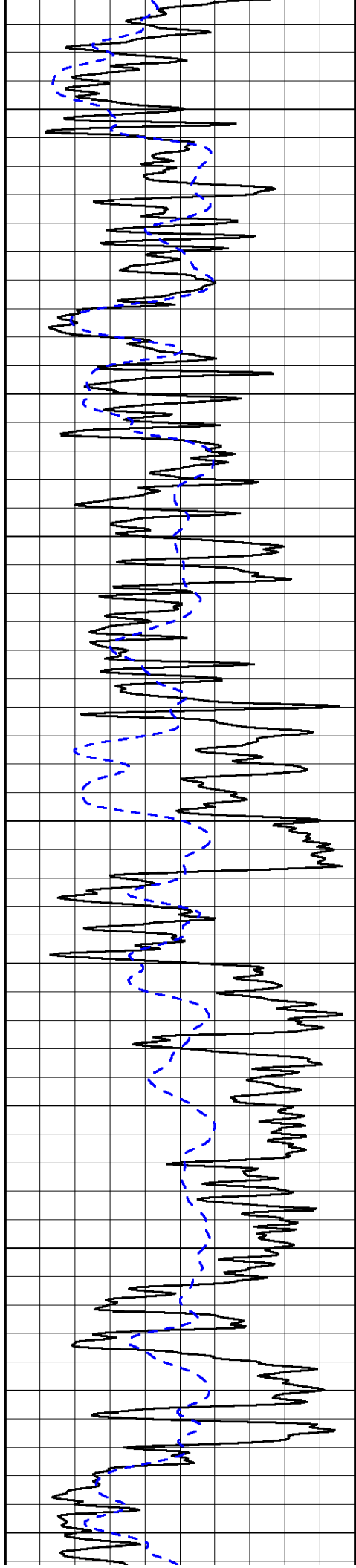
50	Shallow Resistivity	500
50	Deep Resistivity	500

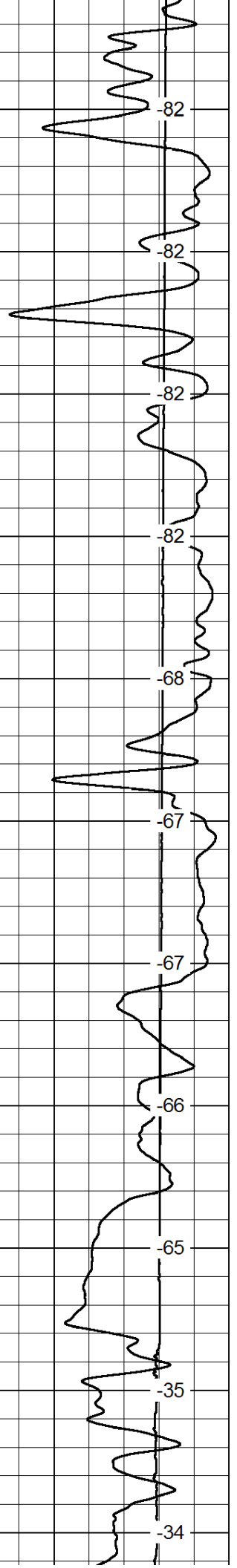
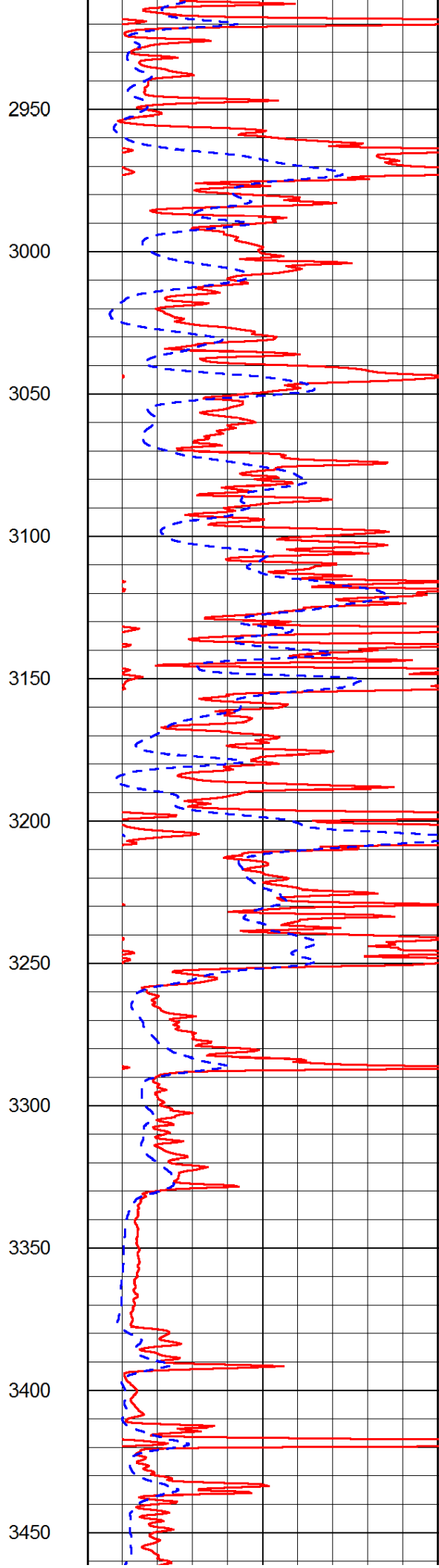
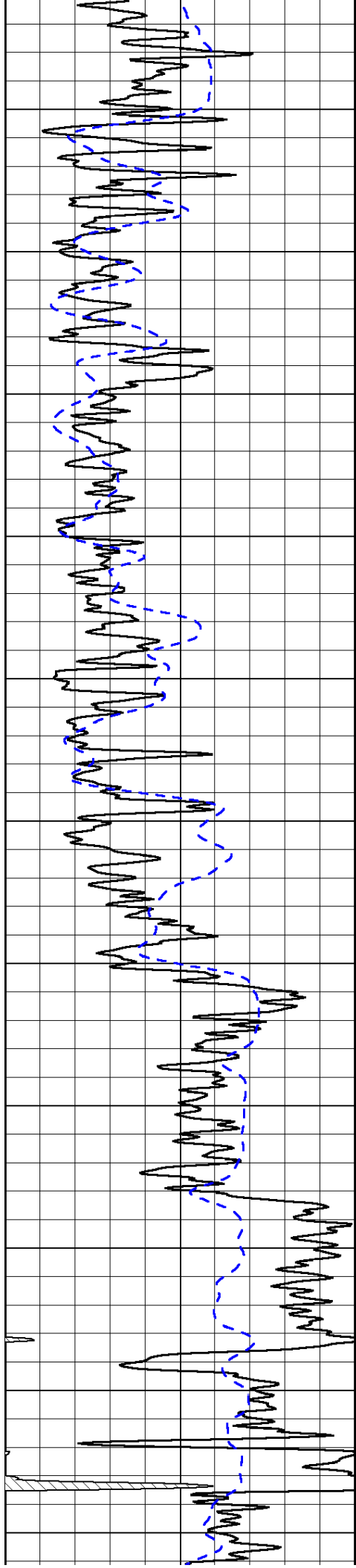


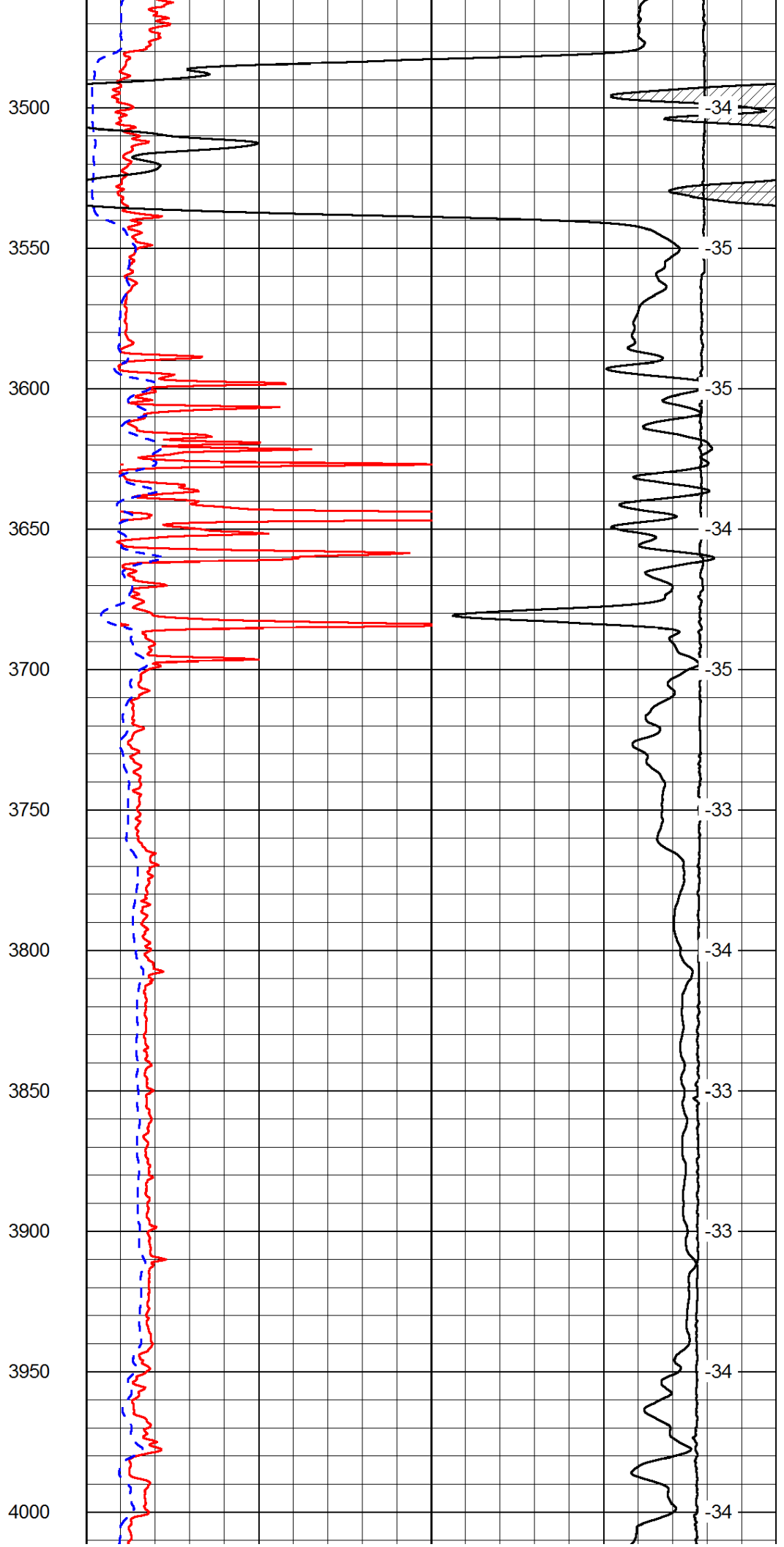
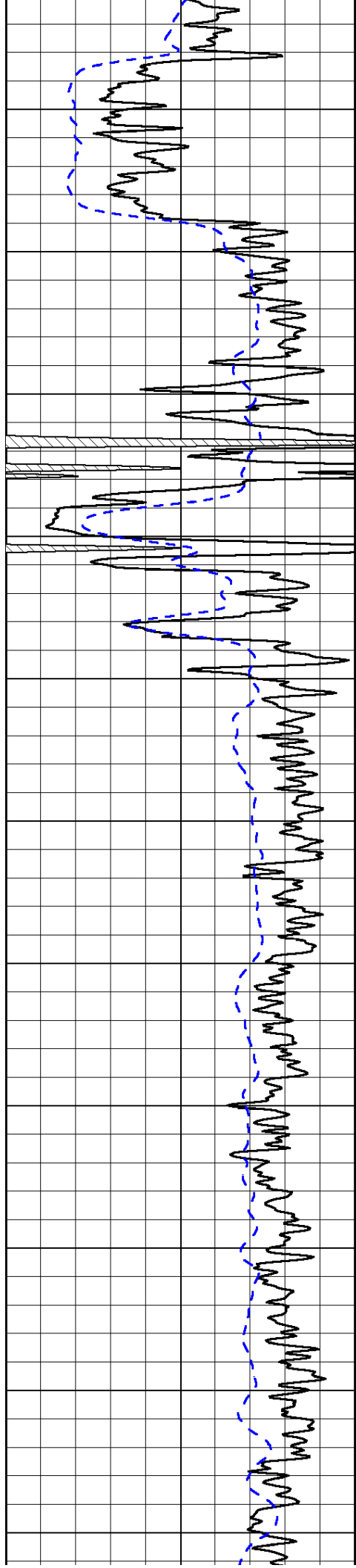




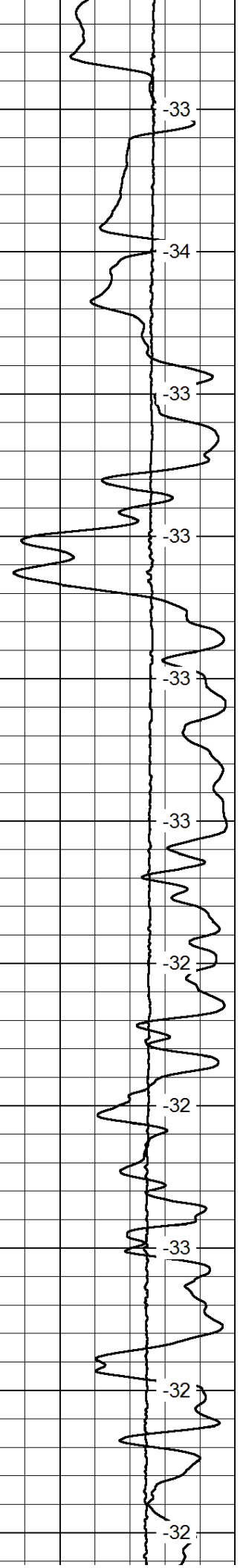
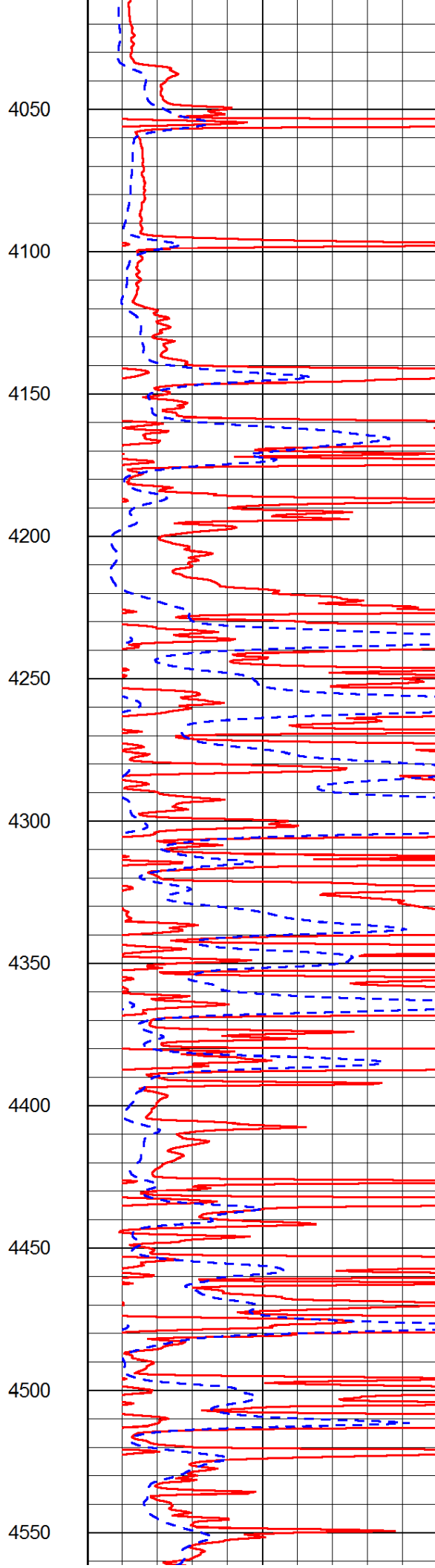
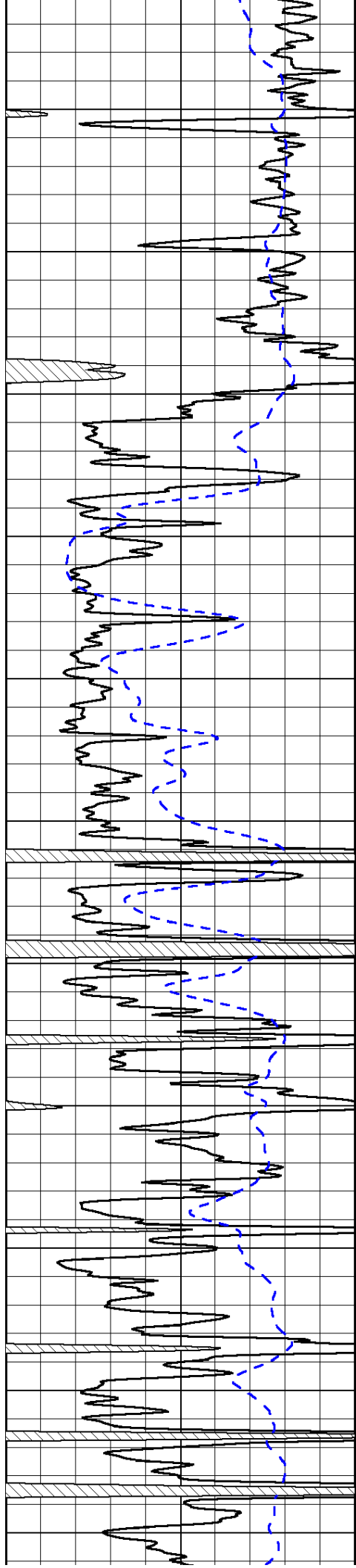


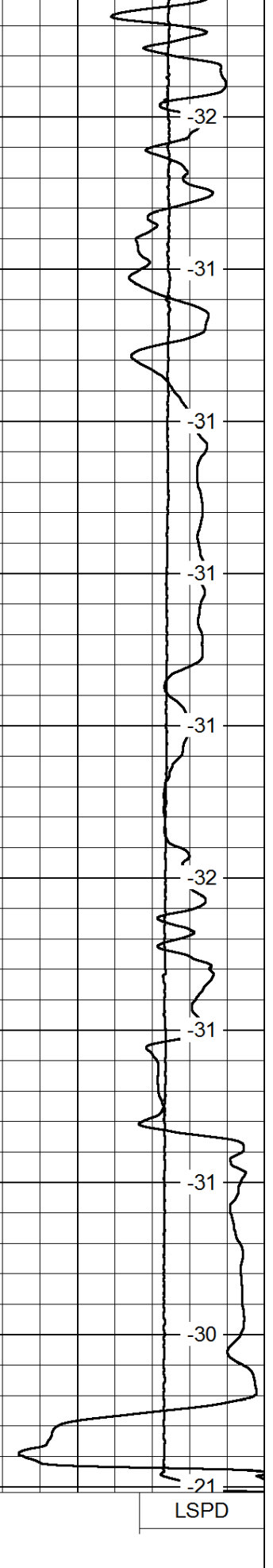
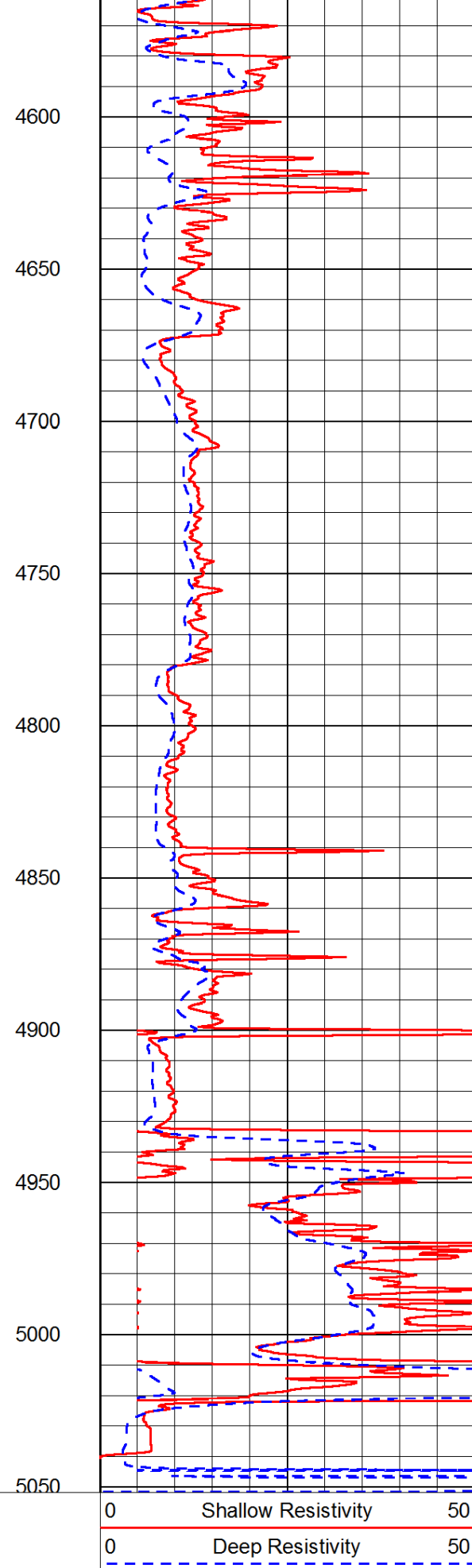
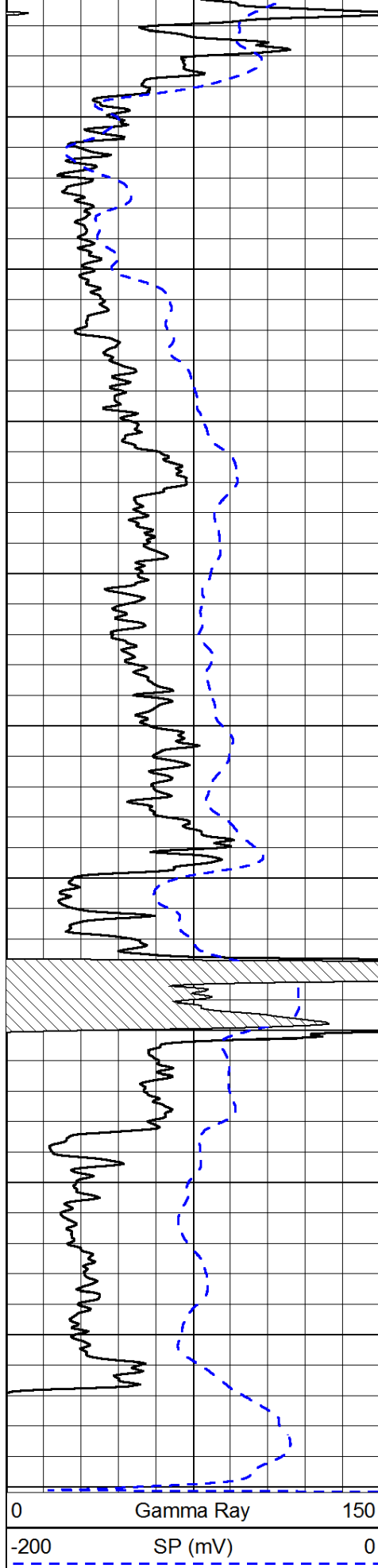












0 150

0 50

0 50

0 -32

0 -31

0 -31

0 -31

0 -31

0 -32

0 -31

0 -31

0 -30

0 -21

1000 Conductivity 0

15000 Line Tension 0

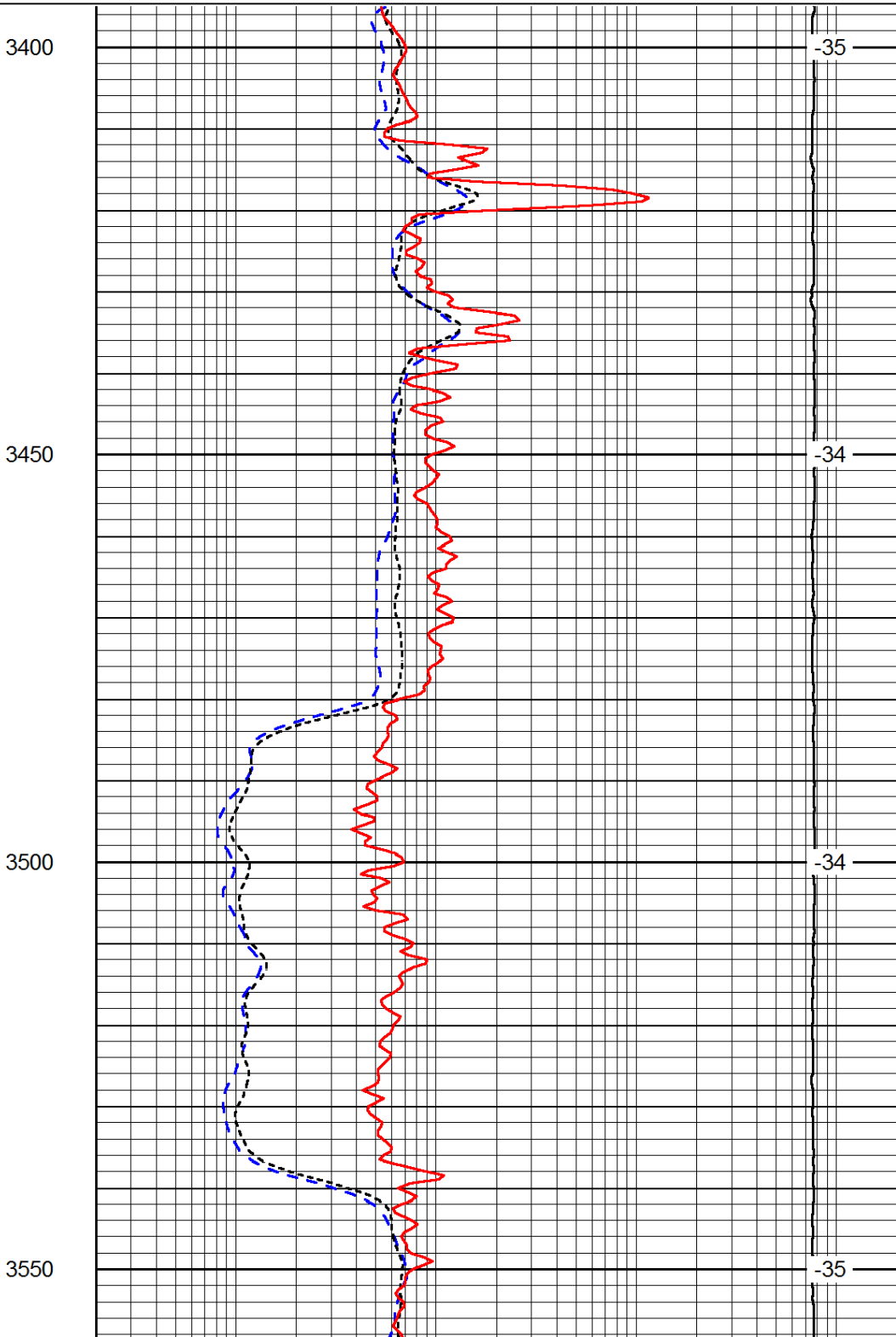
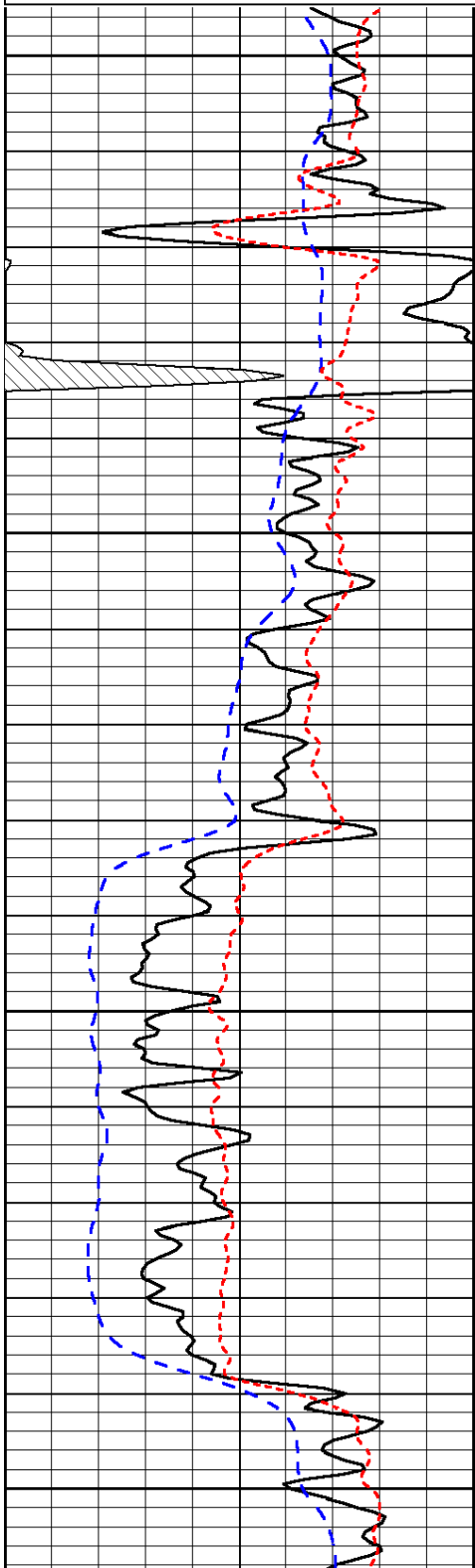
50 Shallow Resistivity 500

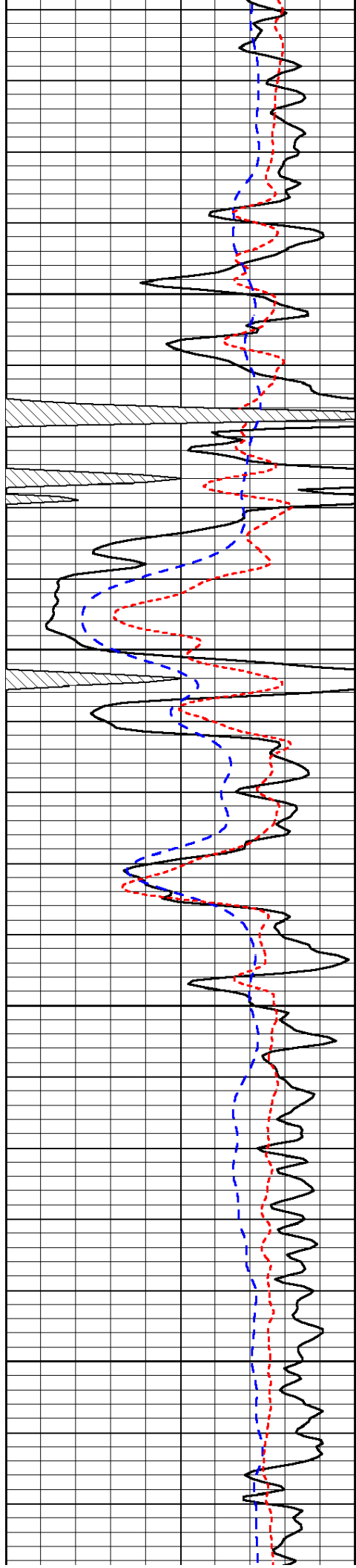
Database File: c:\warrior\data\n-10\_medicine river ranch 'b' #14\n10hd.db  
 Dataset Pathname: dil/n10stk  
 Presentation Format: dil  
 Dataset Creation: Sat May 17 17:13:05 2014  
 Charted by: Depth in Feet scaled 1:240

0	Gamma Ray	150
-200	SP (mV)	0
-160	RxoRt	40

0.2	Deep Resistivity	2000
0.2	Medium Resistivity	2000
0.2	Shallow Resistivity	2000
15000	Line Tension	0

LSPD



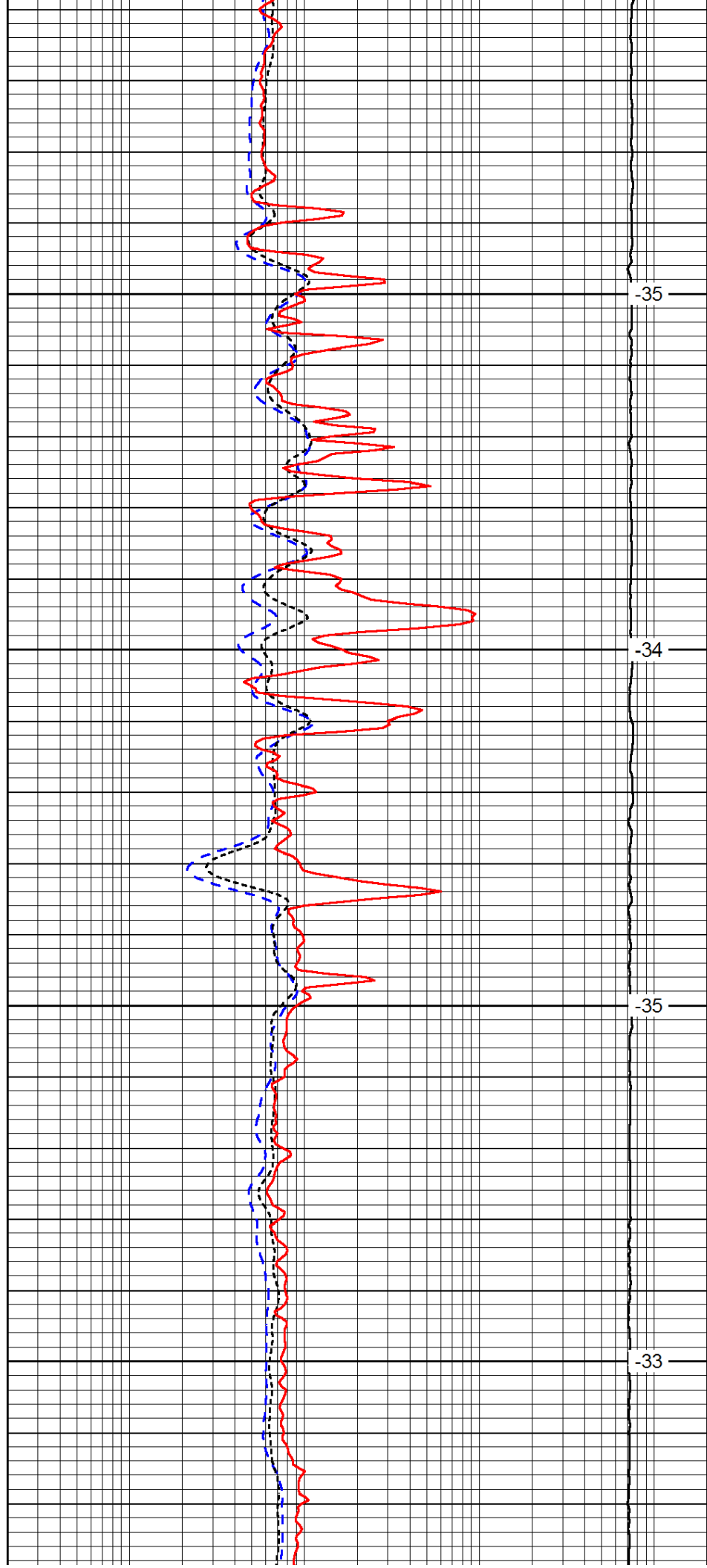


3600

3650

3700

3750

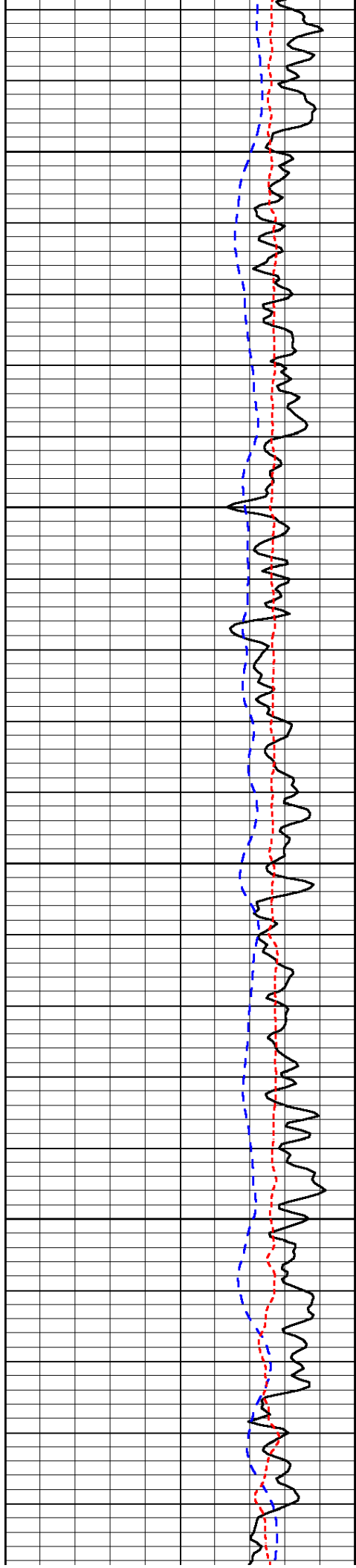


-35

-34

-35

-33

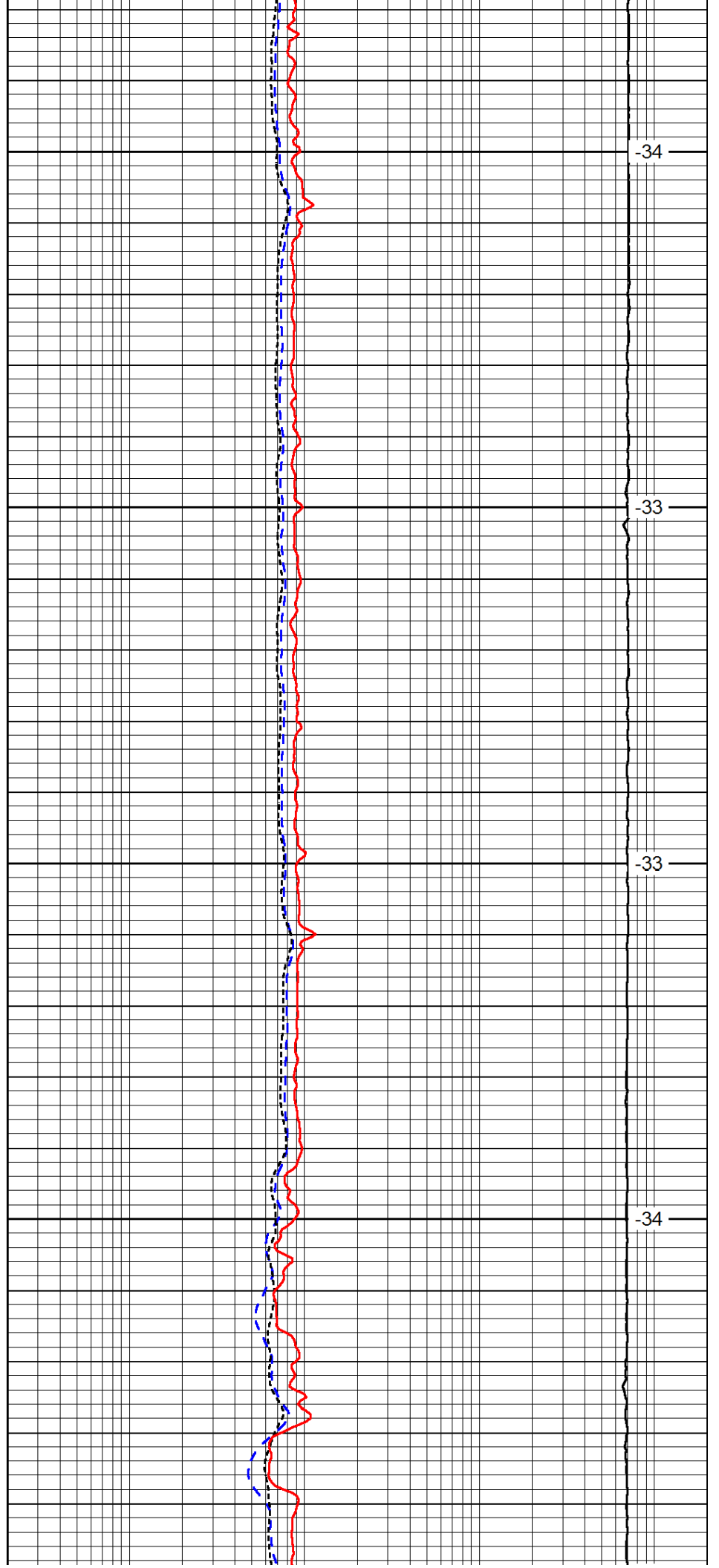


3800

3850

3900

3950

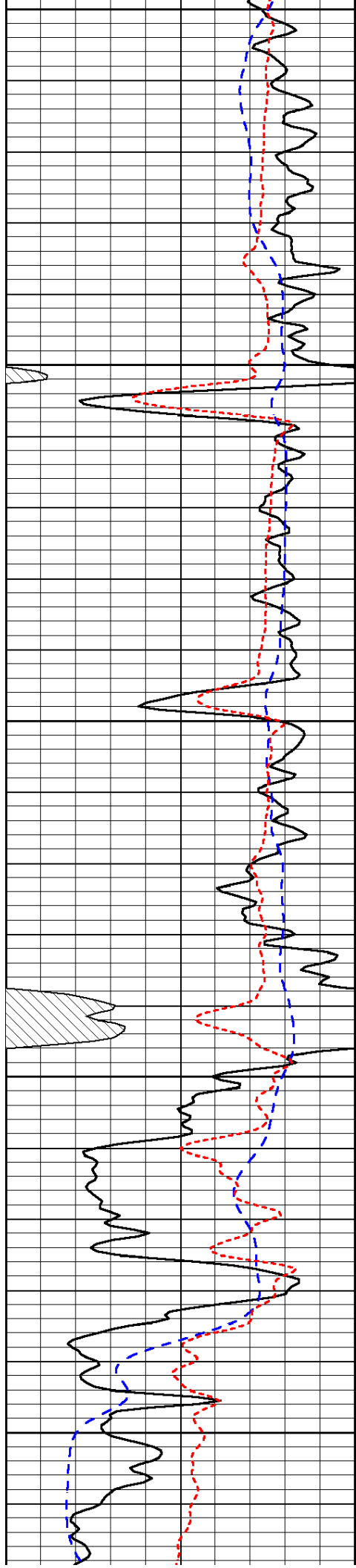


-34

-33

-33

-34



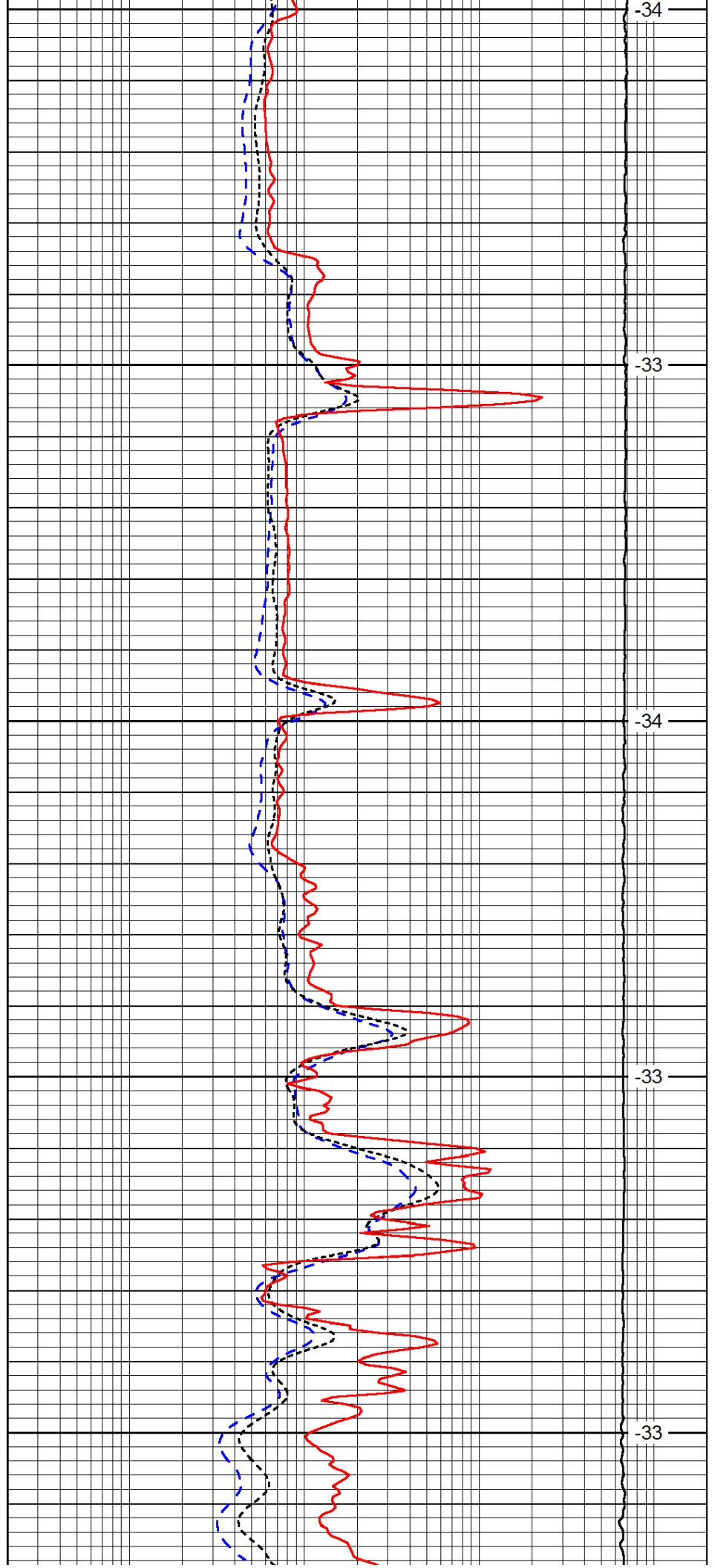
4000

4050

4100

4150

4200



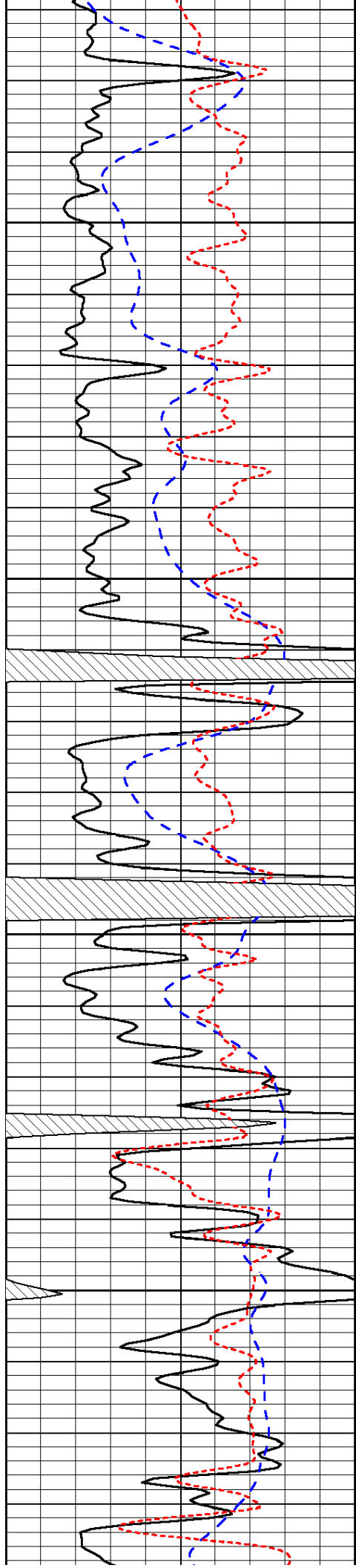
-34

-33

-34

-33

-33

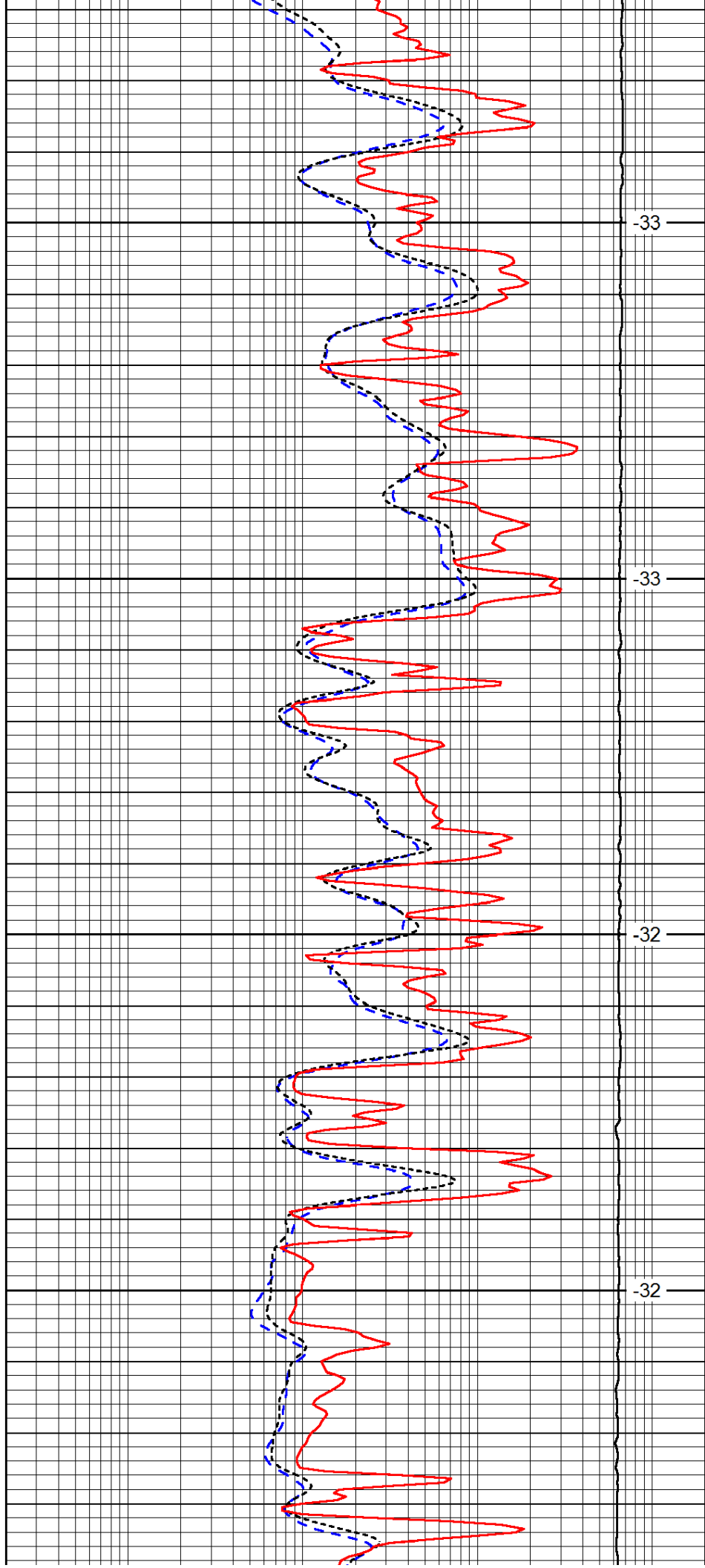


4250

4300

4350

4400

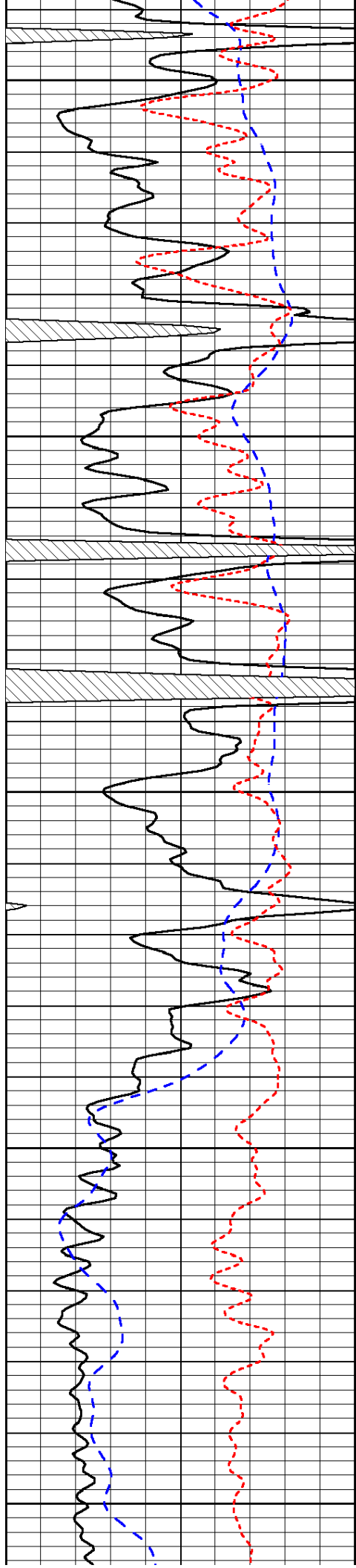


-33

-33

-32

-32



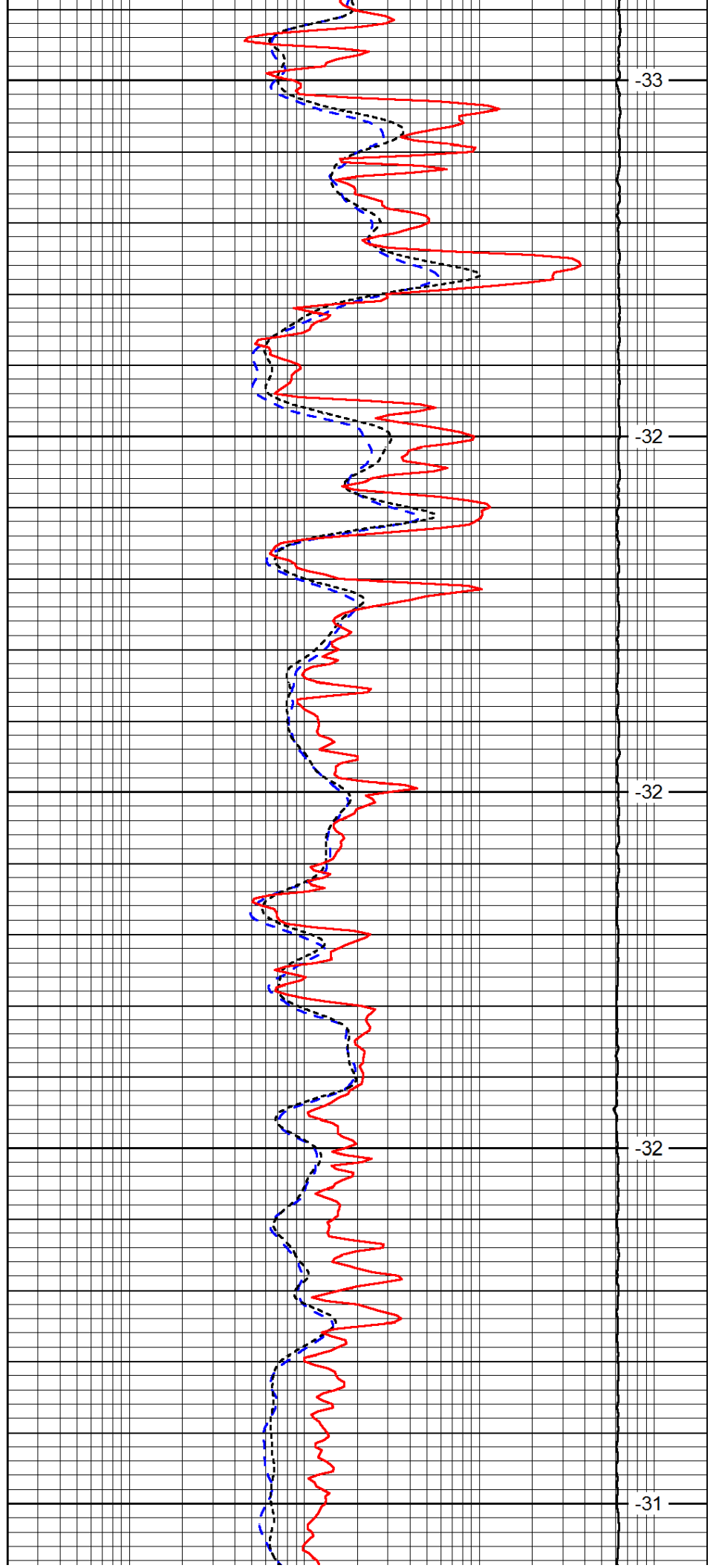
4450

4500

4550

4600

4650



-33

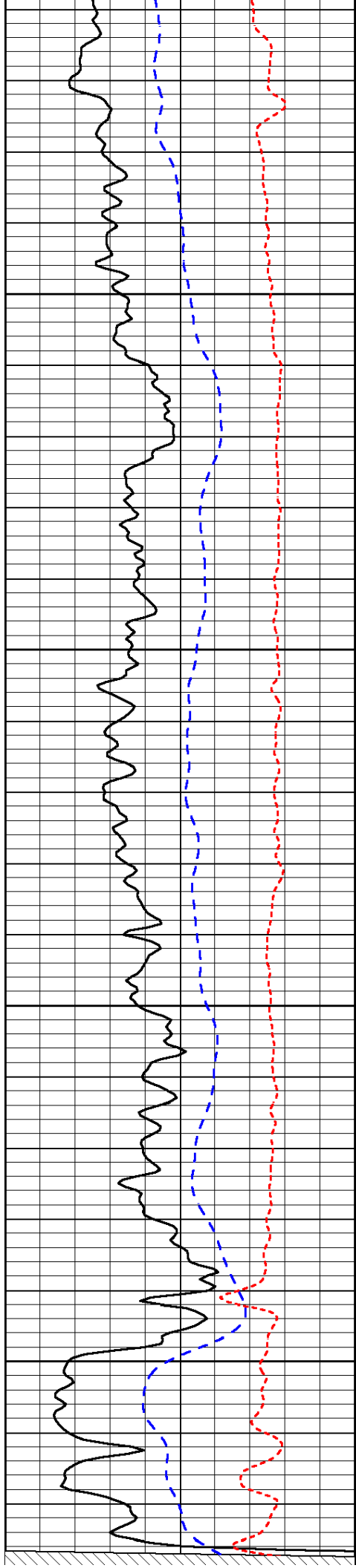
-32

-32

-32

-31



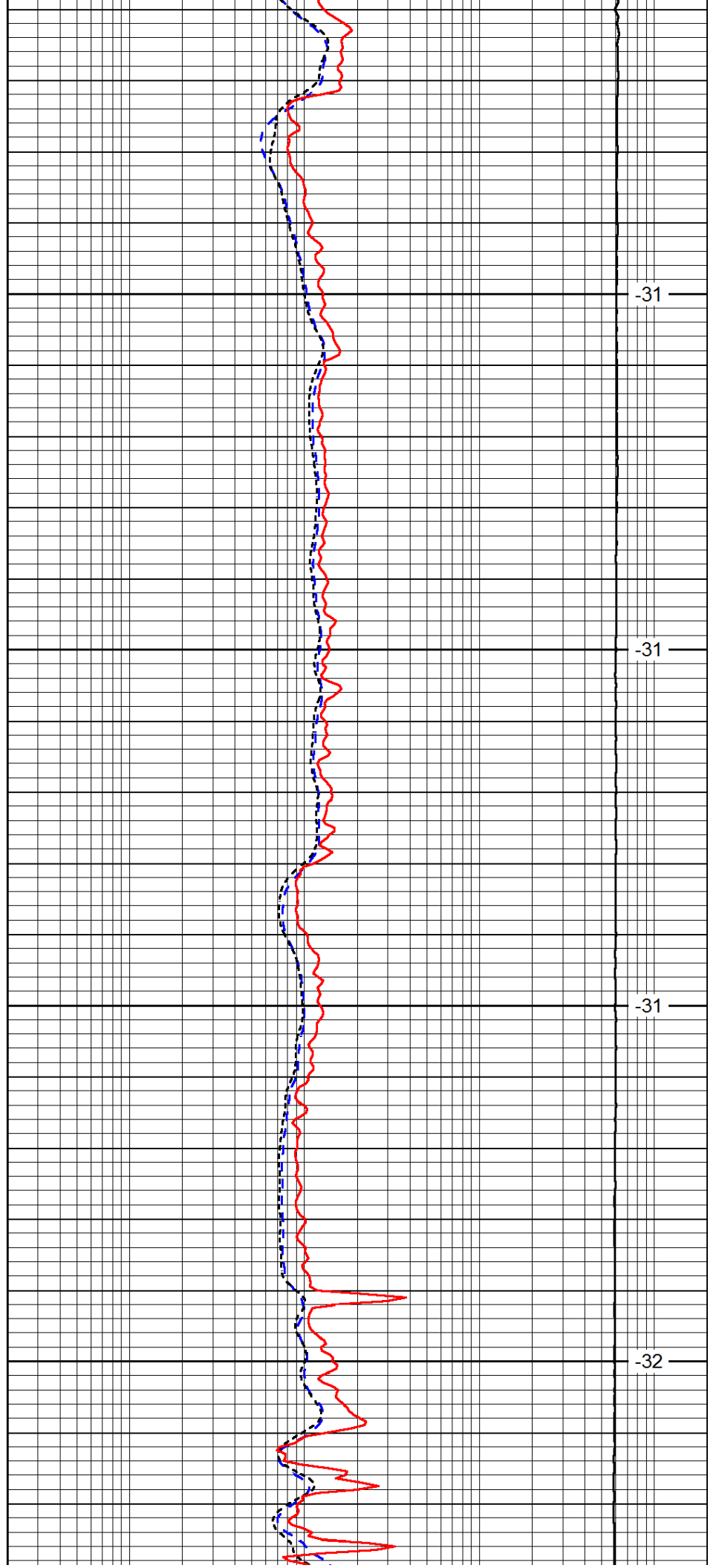


4700

4750

4800

4850

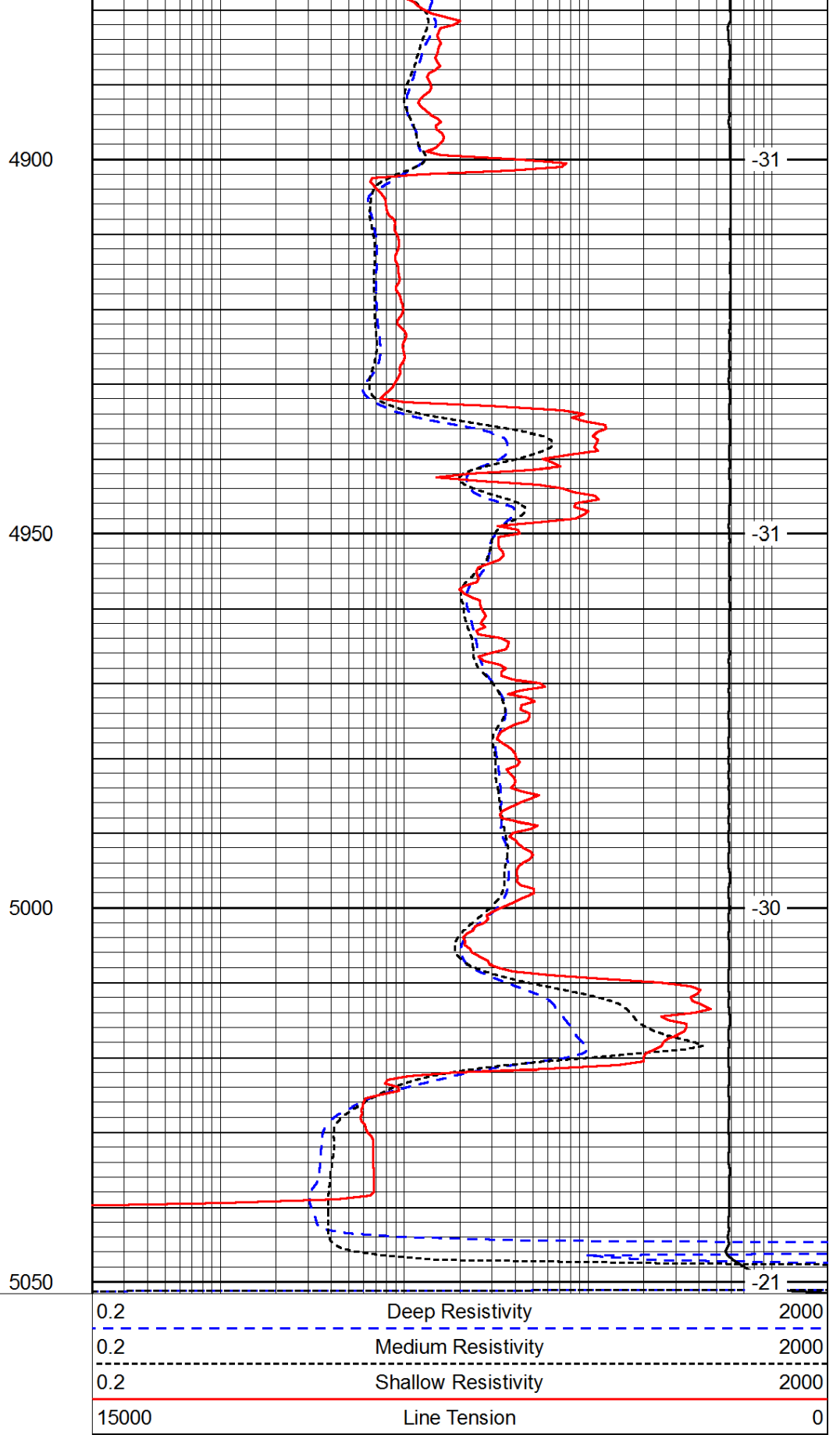
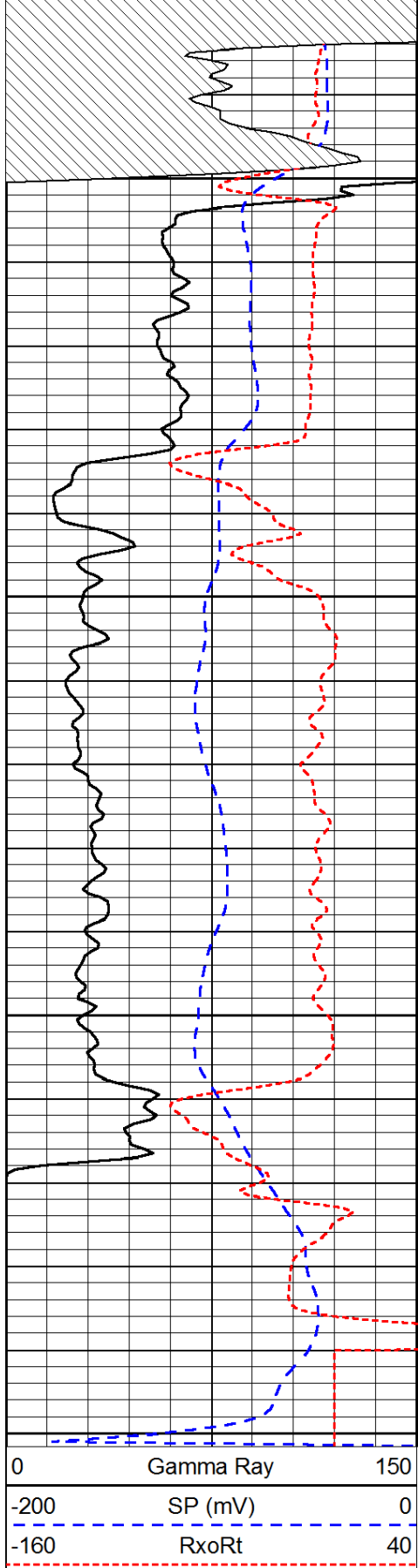


-31

-31

-31

-32



LSPD