



MIDWEST SURVEYS
 LOGGING - PERFORATING - CONSOLIDATING SERVICES
 P.O. Box 68, Osawatomie, KS 66064
 913 / 735 - 2128

GAMMA RAY / NEUTRON / CCL

File No.

Company **Piqua Petro, Inc.**
 Well **Temming No. 3-14**
 Field **Humboldt - Chanute**
 County **Allen** State **Kansas**

Location **3650 FNL & 2100' FWL
 NE-SE-NE-NW**

Other Services
 Perforate

Sec. 14
 Permament Datum
 Log Measured From
 Drilling Measured From

Typ. 25s
 Rge. 17e
 Elevation
 K.B. NA
 D.F. NA
 G.L. NA

Date
 Run Number
 Depth Logger
 Bottom Logged Interval
 Top Log Interval
 Fluid Level

08-07-2014
 One
 1102.0
 1086.0
 200.0
 Full

Type Fluid
 Density / Viscosity
 Salinity - PPM Cl
 Max Recorded Temp
 Estimated Cement Top
 Equipment No.
 Recorded By

Water
 NA
 NA
 NA
 0.0
 107
 Osawatomie
 Steve Windisch

Missused By
 R/OIN

BORE-HOLE RECORD
 No. BIT FROM TO
 One 9.875" 0.0 22.0
 Two 5.625" 22.0 1102.0

CASING RECORD
 SIZE WGT FROM TO
 7.00" 0.0 17.0# 0.0
 2.875" 6.5# 0.0 1083.0

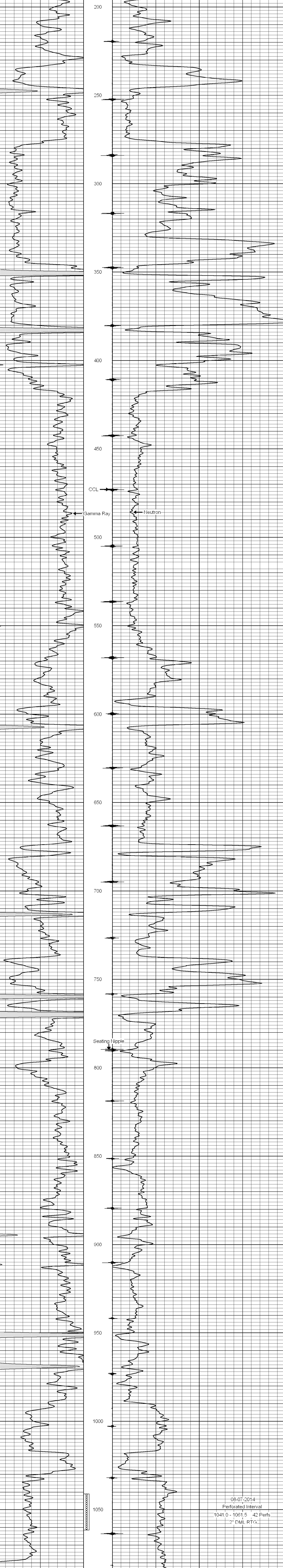
<<< Fold Here >>>

All interpretations are opinions based on inferences from electrical or other measurements and we cannot and do not guarantee the accuracy or correctness of any interpretation, and we shall not, except in the case of gross or willful negligence on our part, be liable or responsible for any loss, costs, damages, or expenses incurred or sustained by anyone resulting from any interpretation made by any of our officers, agents or employees. These interpretations are also subject to our general terms and conditions set out in our current Price Schedule.

Comments

Drilling Contractor :
 John Leis Oil Services

Database File: temming 3-14.db
 Dataset Pathname: pass1
 Presentation Format: gr-n-ccl
 Dataset Creation: Thu Aug 07 12:31:15 2014 by Log SCH 111116
 Charted by: Depth in Feet scaled 1:240



0 Gamma Ray (cps) 150
 150 Gamma Ray (cps) 300
 -1 CCL 1
 10 Neutron (cps) 2100