



MIDWEST SURVEYS
 LOGGING - PERFORATING - CONSULTING SERVICES
 P.O. Box 68, Osawatomie, KS 68064
 913 / 755 - 2128

GAMMA RAY / NEUTRON / CCL

File No. _____

Company **Piqua Petro, Inc.**

Well **Temming No. 1-14**

Field **Humboldt - Chanute**

County **Allen** State **Kansas**

Location **2480' FNL & 2140' FWL**

Other Services **Perforate**

Sec. 14 Typ. 25s Rge. 17e Elev. N/A

Perm. Dam. GL Log Meas. From GL Drilling Meas. From GL

Date 08-07-2014

Run Number One

Depth Logger 1098.0

Bottom Logged Interval 1078.4

Top Log Interval 200.0

Fluid Level Full

Type Fluid Water

Density / Viscosity NA

Salinity - PPM Cl NA

Max. Recorded Temp NA

Estimated Cement Top 0.0

Equipment No. 107 Location Osawatimie

Recorded By Steve Vahdusch

Witnessed By Greg Lair

BOREHOLE RECORD

NO. BIT FROM TO SIZE WGT. FROM TO TO

One 9.875" 0.0 22.0 7.00" 17.0# 0.0 22.0

Two 5.025" 22.0 1098.0 2.875" 6.5# 0.0 1091.0

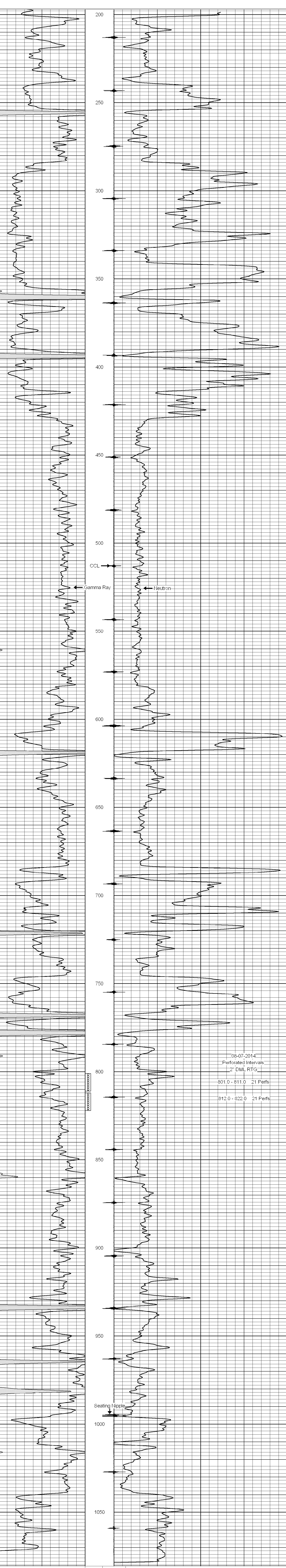
<<< Fold Here >>>

All interpretations are opinions based on inferences from electrical or other measurements and we cannot and do not guarantee the accuracy or correctness of any interpretation, and we shall not, except in the case of gross or willful negligence on our part, be liable or responsible for any loss, costs, damages, or expenses incurred or sustained by anyone resulting from any interpretation made by any of our officers, agents or employees. These interpretations are also subject to our general terms and conditions set out in our current Price Schedule.

Comments

Drilling Contractor :
John Leis Oil Services

Database File: temming 1-14.db
 Dataset Pathname: pass1
 Presentation Format: gr-n-ccl
 Dataset Creation: Thu Aug 07 11:31:01 2014 by Log SCH 111116
 Charted by: Depth in Feet scaled 1:240



0 Gamma Ray (cps) 150
 150 Gamma Ray (cps) 300
 -1 CCL 1
 10 Neutron (cps) 2100