



MIDWEST SURVEYS
 LOGGING - PERFORATING - CONSULTING SERVICES
 P.O. Box 88, Osawatomie, KS 66064
 913.755.2428

GAMMA RAY / NEUTRON / CCL

File No.

Company **Piqua Petro, Inc.**

Well **Temming No. 2-14**

Field **Humboldt - Chanute**

County **Allen** State **Kansas**

Location **2160' FNL & 2500' FWL**

Other Services **Perforate**

Sec. **14** Twp. **25S** Rge. **17E**

Permanent Datum **GL** Elevation **NA**

Log Measured From **GL** K.B. **NA**

Drilling Measured From **GL** D.F. **NA**

Date **08-07-2014**

Run Number **One**

Depth Diller **889.0**

Depth Logger **857.8**

Bottom Logged Interval **856.8**

Top Log Interval **200.0**

Fluid Level **Full**

Type Fluid **Water**

Density / Viscosity **NA**

Salinity - PPM Cl **NA**

Max. Recorded Temp **NA**

Estimated Cement Top **0.0**

Equipment No. **107** Location **Osawatomie**

Recorded By **Steve Wandsch**

BORE-HOLE RECORD		CASINGS RECORD	
Run No.	BIT FROM TO	SIZE	WGT. FROM TO
One	9.875" 0.0 22.0	7.00"	17.0# 0.0 22.0
Two	5.625" 22.0 889.0	2.875"	6.5# 0.0 865.0

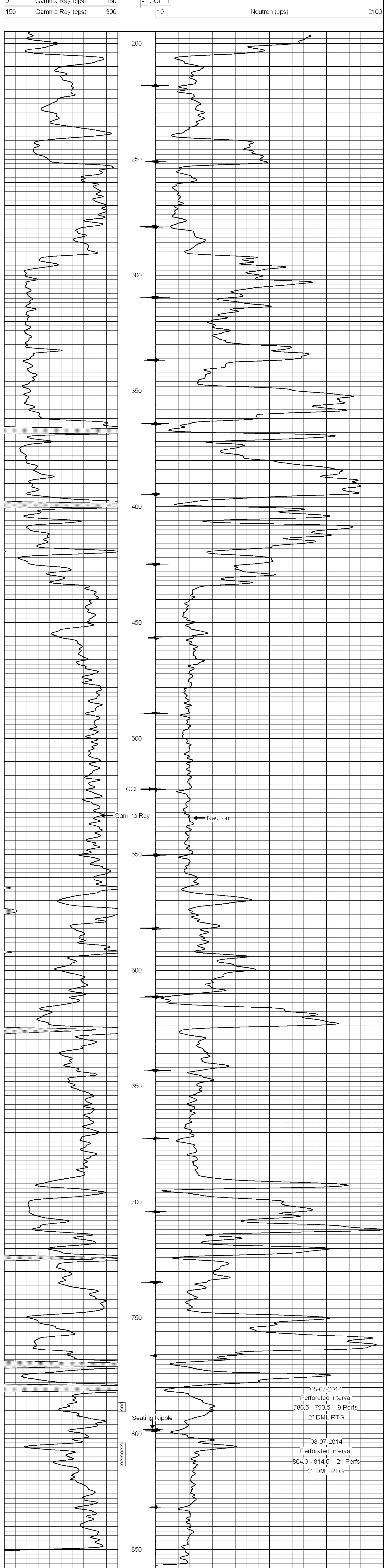
<<< Fold Here >>>

All interpretations are opinions based on inferences from electrical or other measurements and we cannot and do not guarantee the accuracy or correctness of any interpretation, and we shall not, except in the case of gross or willful negligence on our part, be liable or responsible for any loss, costs, damages, or expenses incurred or sustained by anyone resulting from any interpretation made by any of our officers, agents or employees. These interpretations are also subject to our general terms and conditions set out in our current Price Schedule.

Comments

Drilling Contractor :
 John Leis Oil Services

Database File: temming 2-14.db
 Dataset Pathname: pass1
 Presentation Format: gr-n-ccl
 Dataset Creation: Thu Aug 07 10:39:44 2014 by Log SCH 111116
 Charted by: Depth in Feet scaled 1:240



08-07-2014
 Perforated Interval
 786.5 - 790.5 9 Perfs
 2" DML RTG

08-07-2014
 Perforated Interval
 804.0 - 814.0 21 Perfs
 2" DML RTG