



MIDWEST SURVEYS
 LOGGING - PERFORATING - CONSULTING SERVICES
 P.O. Box 68, Osawatomie, KS 66064
 913 / 755 - 2128

GAMMA RAY / NEUTRON / CCL

File No.

Company **Piqua Petro, Inc.**

Well **Bruenger No. 1-14**

Field **Humboldt - Chanute**

County **Allen** State **Kansas**

Location **3130' FSL & 2470' FEL**

Perforate **SW-SW-SW-NE**

Other Services

Sec. **14** Twp. **25S** Rge. **17E**

Permanent Datum **GL** Elevation **NA**

Log Measured From **GL** K.B. **NA**

Drilling Measured From **GL** D.F. **NA**

Date **09-06-2014** Elevation **GL**

Run Number **One**

Depth Driller **882.0**

Depth Logger **870.5**

Bottom Logged Interval **889.5**

Top Log Interval **200.0**

Fluid Level **Full**

Type Fluid **Water**

Density / Viscosity **NA**

Salinity - PPM/Cl **NA**

Max. Recorded Temp **NA**

Estimated Cement Top **0.0**

Equipment No. **107** Location **Osawatomie**

Recorded By **Steve Windisch**

BORE-HOLE RECORD				CASINGS RECORD			
RUN No.	BIT FROM	TO	SIZE	WGT.	FROM	TO	
One	9.875"	0.0	7.00"	17.0 #	0.0	22.0	
Two	5.625"	22.0	2.875"	6.5 #	0.0	876.0	

Addressed By **Greg Lair**

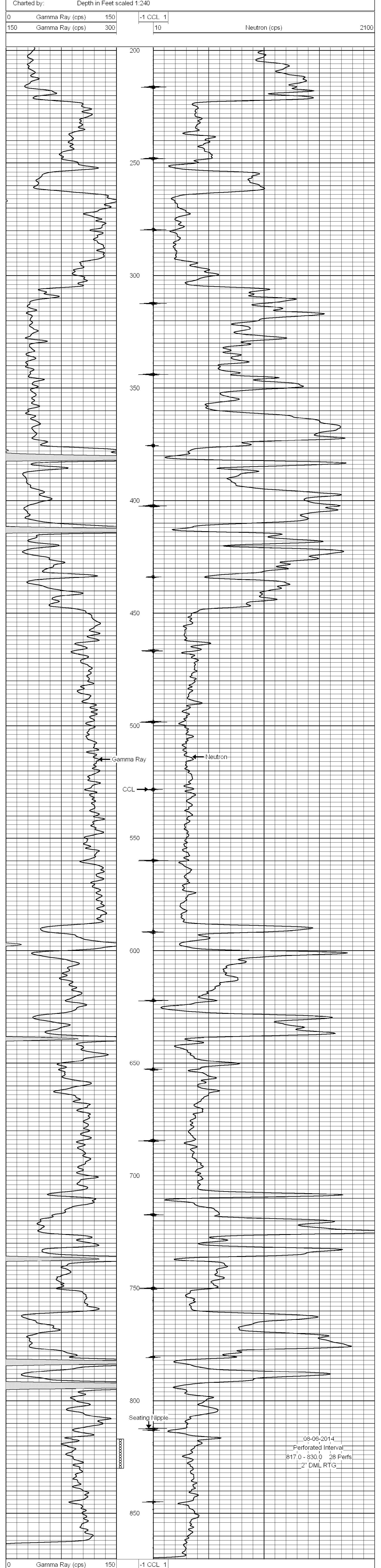
<<< Fold Here >>>

All interpretations are opinions based on inferences from electrical or other measurements and we cannot and do not guarantee the accuracy or correctness of any interpretation, and we shall not, except in the case of gross or willful negligence on our part, be liable or responsible for any loss, costs, damages, or expenses incurred or sustained by anyone resulting from any interpretation made by any of our officers, agents or employees. These interpretations are also subject to our general terms and conditions set out in our current Price Schedule.

Comments

Drilling Contractor :
John Leis Oil Services

Database File: bruenger 1-14.db
 Dataset Pathname: pass1
 Presentation Format: gr-n-ccl
 Dataset Creation: Wed Aug 06 14:18:24 2014 by Log SCH 111116
 Charted by: Depth in Feet scaled 1:240



08-06-2014
 Perforated Interval
 817.0 - 830.0 28 Perfs
 2" DML RTG

BORE-HOLE RECORD				CASINGS RECORD			
RUN No.	BIT FROM	TO	SIZE	WGT.	FROM	TO	
One	9.875"	0.0	7.00"	17.0 #	0.0	22.0	
Two	5.625"	22.0	2.875"	6.5 #	0.0	876.0	