



**MIDWEST SURVEYS**  
 LOGGING - PERFORATING - CONSULTING SERVICES  
 P.O. Box 68, Osawatomie, KS 66064  
 913.755.2128

**GAMMA RAY / NEUTRON / CCL**

File No. \_\_\_\_\_

Company **RJ Enterprises**

Well **Babbs No. 13-1**

Field **Bush City Shoestring**

County **Anderson** State **Kansas**

Location **3028' FSL & 4302' FEL**

**NW-SE-SW-NW**

Sec. **18** Twp. **21s** Rge. **21e**

Permanent Datum **GL** Elevation **NA**

Log Measured From **GL**

Drilling Measured From **GL**

Date **08-01-2014**

Run Number **One**

Depth Driller **681.0**

Depth Logger **674.0**

Bottom Logged Interval **673.0**

Top Log Interval **20.0**

Fluid Level **Full**

Type Fluid **Water**

Density / Viscosity **NA**

Salinity - PPM Cl **NA**

Max Recorded Temp **NA**

Estimated Cement Top **0.0**

Equipment No **102** Location **Osawatomie**

Recorded By **Gary Windsch**

Witnessed By **Jason Kent**

Other Services  
Perforate

BORE-HOLE RECORD				CASING RECORD			
RUN	BIT No.	FROM	TO	SIZE	WGT.	FROM	TO
One	9.875"	0.0	20.0	7.00"	17.0 #	0.0	20.0
Two	5.625"	20.0	631.0	2.875"	6.5 #	0.0	674.9

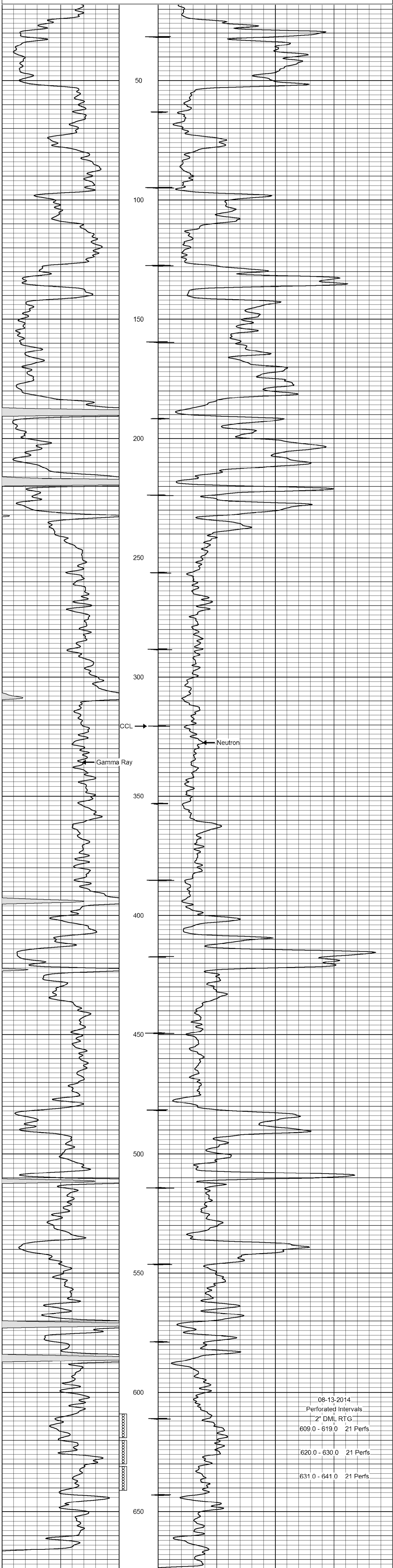
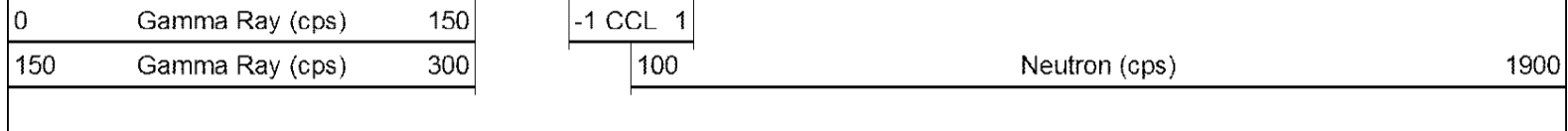
<<< Fold Here >>>

All interpretations are opinions based on inferences from electrical or other measurements and we cannot and do not guarantee the accuracy or correctness of any interpretation, and we shall not, except in the case of gross or willful negligence on our part, be liable or responsible for any loss, costs, damages, or expenses incurred or sustained by anyone resulting from any interpretation made by any of our officers, agents or employees. These interpretations are also subject to our general terms and conditions set out in our current Price Schedule.

Comments

Drilling Contractor :  
RJ Enterprises

Database File: babbs13i.db  
 Dataset Pathname: pass1  
 Presentation Format: gr-n-ccl  
 Dataset Creation: Fri Aug 01 13:10:07 2014 by Log SCH 111116  
 Charted by: Depth in Feet scaled 1:240



08-13-2014  
 Perforated Intervals  
 2" DML RTG  
 609.0 - 619.0 21 Perfs  
 620.0 - 630.0 21 Perfs  
 631.0 - 641.0 21 Perfs

