



Triple Combo
4-Mineral/Dual Water
NMR
Core Data

API WELL NO. 15077219310000

CLIENT SANDRIDGE EXP & PROD
COMPANY SANDRIDGE EXP & PROD
WELL 4J RANCH 3408 3-33H
FIELD JENNIFER WEST
COUNTY HARPER STATE KANSAS

LOCATION: TWP: 34 S - Range: 8 W - Sec. 33
220 FSL 1715 FWL
SHL

OTHER COMPUTATIONS
Rw=0.03

PERMANENT DATUM GR ELEV. -999.25
LOG MEASURED FROM KB , ABOVE PERM DATUM
DRILLING MEASURED FROM KB ELEV. K.B. 1269
D.F.
G.L. 1251

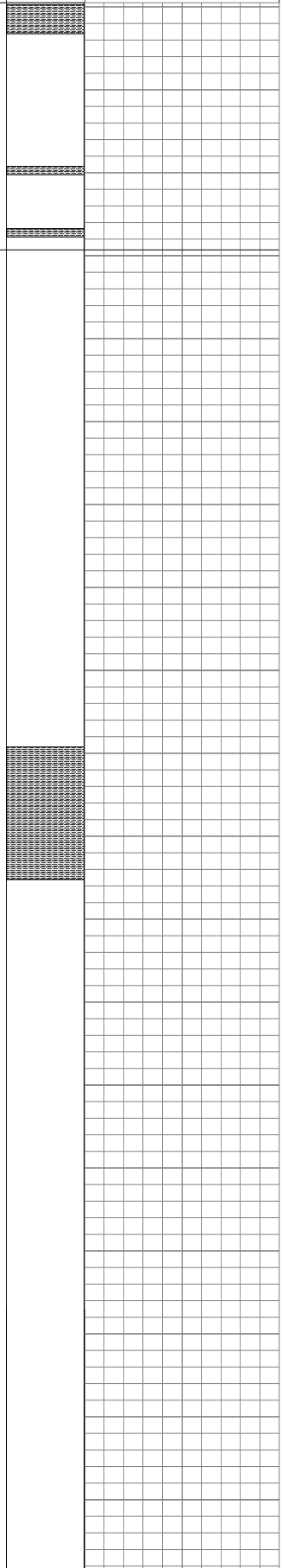
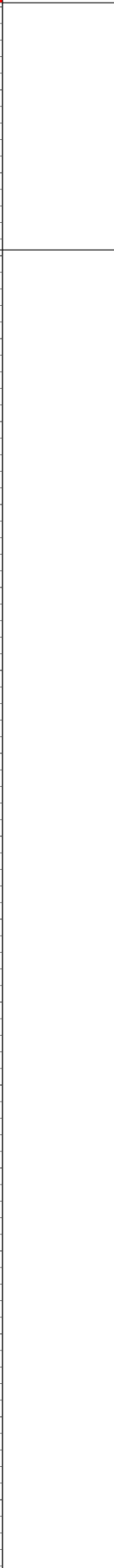
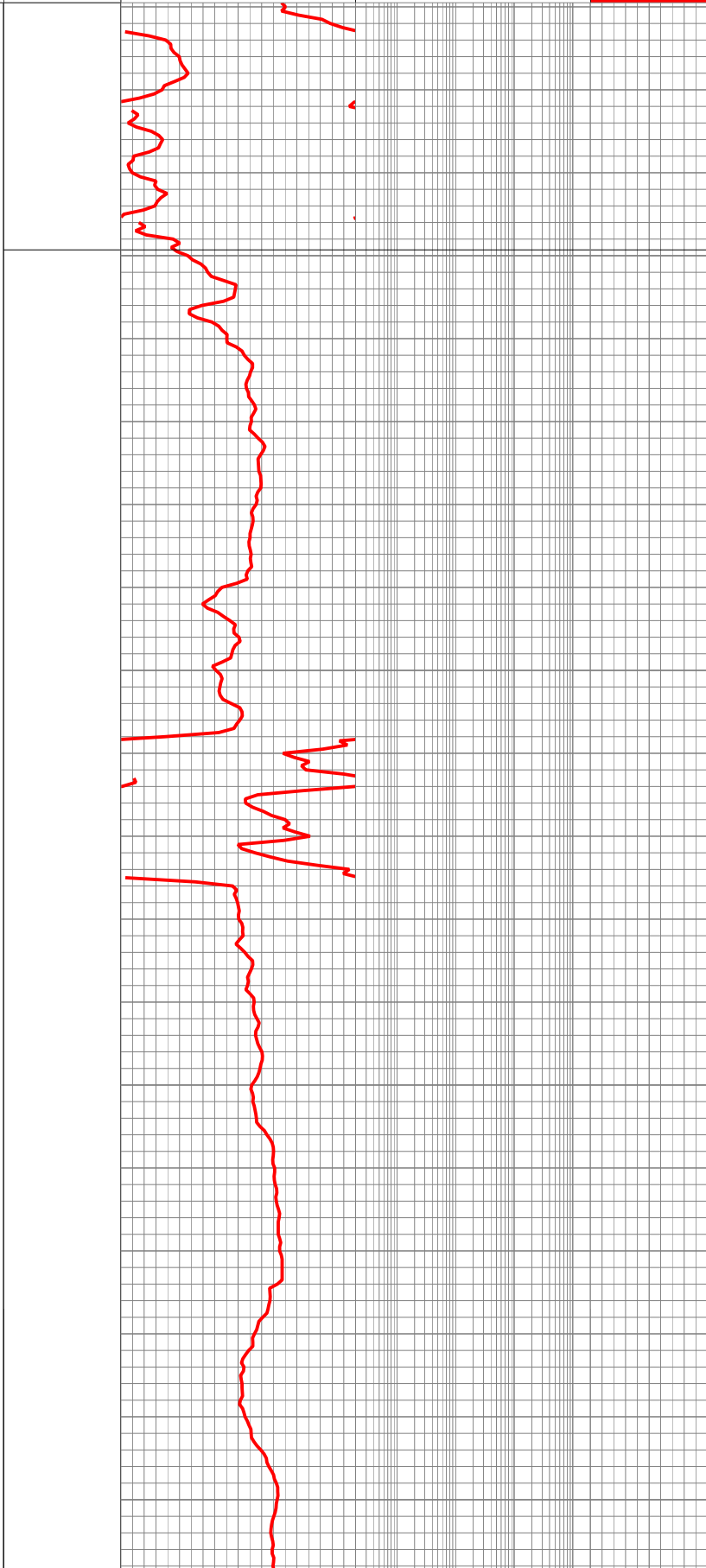
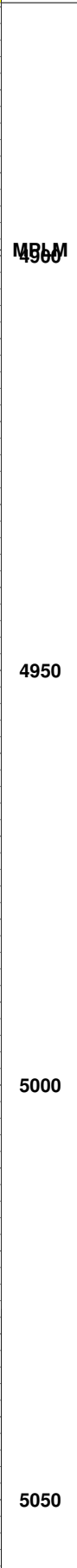
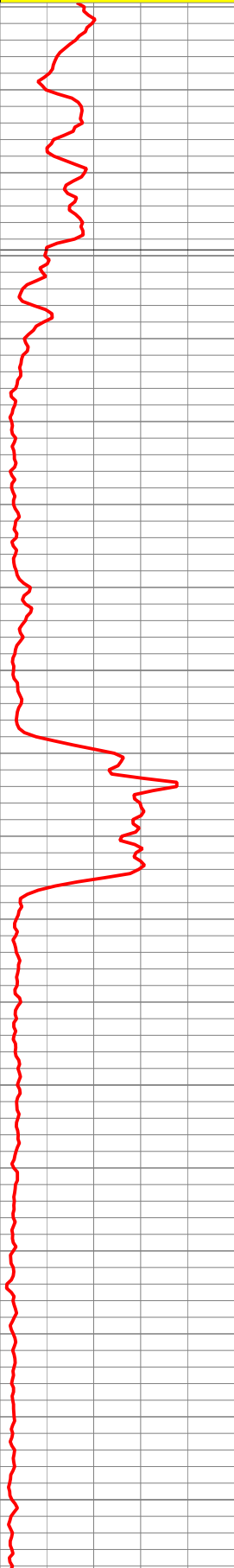
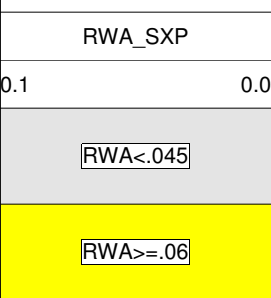
DATE	30 - DEC - 1899
RUN NO.	
DEPTH - DRILLER	
DEPTH - LOGGER	9334
BOTTOM LOGGED INTERVAL	9334
TOP LOGGED INTERVAL	3000
CASING - DRILLER	
CASING - LOGGER	
BIT SIZE	
TYPE FLUID IN HOLE	
CASING SIZE	CASING WEIGHT
DENSITY	VISCOSITY
PH	FLUID LOSS
SOURCE OF SAMPLE	
R _m @ MEASURED TEMP.	@
R _{nr} @ MEASURED TEMP.	@
R _{nc} @ MEASURED TEMP.	@
SOURCE: R _{nr} R _{nc}	@
R _m @ BHT	@
CIRCULATION STOP DATE	
MAX. REC. TEMP	
Company	LOCATION ThruBit LLC.
RECORDED BY	
WITNESSED BY	

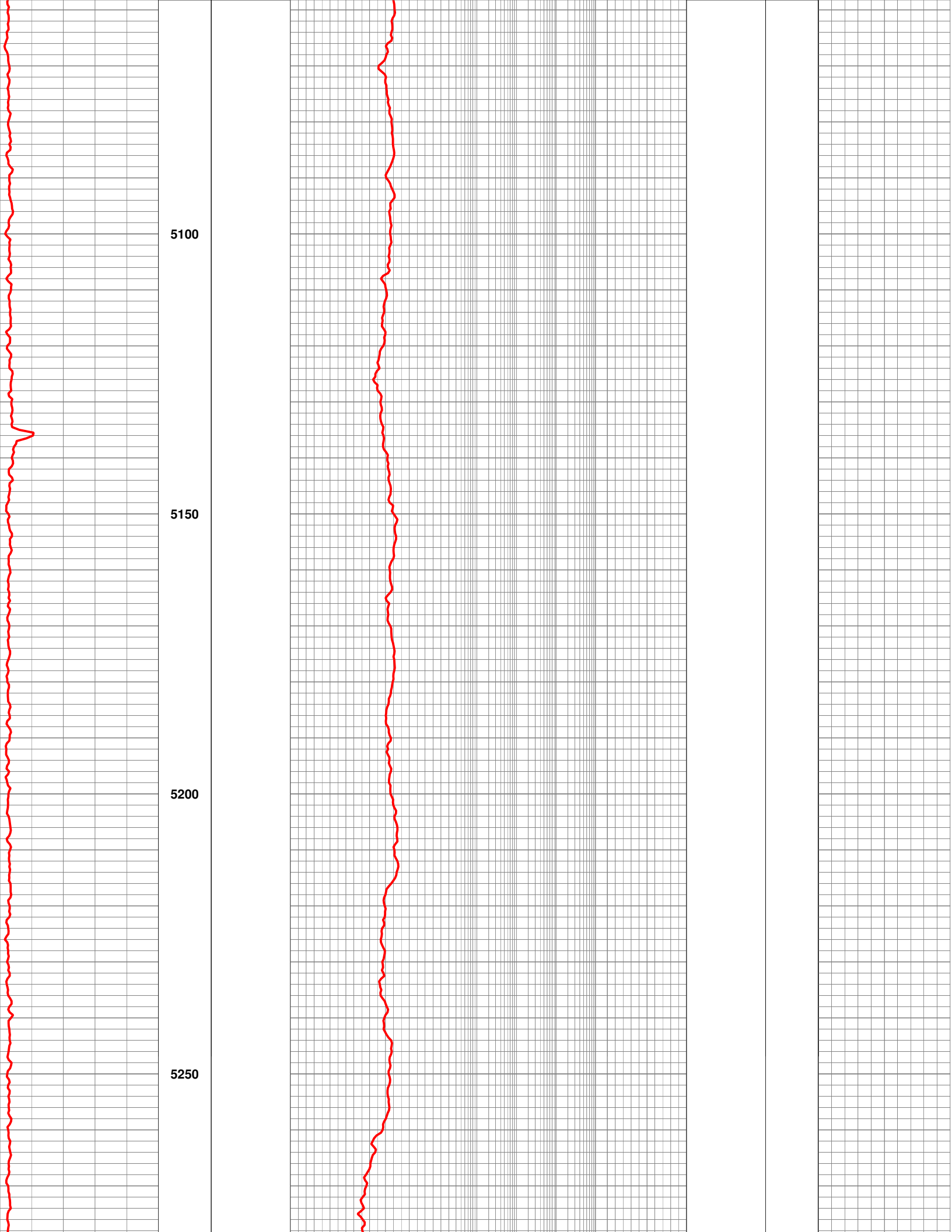
FOLD HERE

Interpretations are opinions based upon inferences from electrical or other measurements and algorithms, empirical relationships, and assumptions which are not infallible and with respect to which log analysts may differ. Accordingly, <Company Name> cannot and does not guarantee the accuracy or correctness of any interpretation and shall not be liable or responsible for any losses, costs, damages, or expenses incurred or sustained by anyone resulting from any interpretation made by any of our officers, agents, or employees.

COMPUTATION	LOGS USED: Triple Combo	PROGRAM: PRIZM
	CENTER: OKC	LOG ANALYST: Jack Austin
	REFERENCE NUMBER: []	DATE: 7/18/2012

Correlation	Depth	RWA Flags	Open-Hole Porosity	Open-Hole Resistivity	Pore Space	Lithology	INT-LITH	Mudlog Data
CGR(N/A)	MD	>=.075	PHID	ResD(90IN_2FT_R)	PHIT	Sandstone	Sandstone	C1(N/A)
150			0.3	-0.10.2	OHM-M 2000.0000.2	0	0.0	250
GR	BHF	>=.06	PHIN	ResM(60IN_2FT_R)	PHIA	Limestone	Limestone	C2(N/A)
GAPI	150		0.3	-0.10.2	OHM-M 2000.0000.20	0	0.0	250
GRPO(N/A)	Vshl > .4	>=.045	SXP	ResS(20IN_2FT_R)	BVW	Dolomite	Dolomite	C3(N/A)
150			0.3	-0.10.2	OHM-M 2000.0000.2	0	0.0	250
GRTH(N/A)		<.045	PEF		PHIE	Clay	Shale	C4(N/A)
150			0.0	BARN 20	0.20	0	0.0	250
GRUR(N/A)		Tight Pay	DRHO		BVWb			OIL_CURVE
150			-0.25	G/CC 0.75	0.2	0	0.0	1
CALI(DCAL)			Crossover		Hydrocarbon			ROP2
5	IN 15						150	





5100

5150

5200

5250

