



Pioneer Energy Services

# Radiation Guard Log

15-153-20,936-00-00

API No.

Company **Berexco, LLC**  
 Well **Michael #1-22**  
 Field **Wildcat**  
 County **Rawlins** State **Kansas**

Location **2200' FNL & 880' FEL**

Sec: **22** Twp: **1S** Rge: **36W**

Other Services  
MEI/BHCS

Permanent Datum **Ground Level** Elevation **3147**  
 Log Measured From **Kelly Bushing** 11 Ft. Above Perm. Datum  
 Drilling Measured From **Kelly Bushing**

Elevation  
K.B. 3158  
D.F. 3147  
G.L. 3147

Date	8/23/2013	
Run Number	One	
Depth Driller	4810	
Depth Logger	4814	
Bottom Logged Interval	4813	
Top Log Interval	300	
Casing Driller	8.625 @ 315	
Casing Logger	305	
Bit Size	7.875	
Type Fluid in Hole	Chemical	
Salinity,ppm CL	2,800	
Density / Viscosity	9.1 134	
pH / Fluid Loss	11.5 6.0	
Source of Sample	Flowline	
Rm @ Meas. Temp	.75 @ 73	
Rmf @ Meas. Temp	.56 @ 73	
Rmc @ Meas. Temp	1.01 @ 73	
Source of Rmf / Rmc	Charts	
Rm @ BHT	.44 @ 124	
Operating Rig Time	5 Hours	
Max Rec. Temp. F	124	
Equipment Number	17	
Location	Hays	
Recorded By	C. Desai	
Witnessed By	Bryan Bynog	

<<< Fold Here >>>

All interpretations are opinions based on inferences from electrical or other measurements and we cannot and do not guarantee the accuracy or correctness of any interpretation, and we shall not, except in the case of gross or willful negligence on our part, be liable or responsible for any loss, costs, damages, or expenses incurred or sustained by anyone resulting from any interpretation made by any of our officers, agents or employees. These interpretations are also subject to our general terms and conditions set out in our current Price Schedule.

### Comments

Thank you for using Pioneer Energy Services  
[www.pioneerenergy.com](http://www.pioneerenergy.com)  
 785 625 3858

McDonald KS, 12 N to BB Rd, 1 1/2 E,  
 N Into at farmstead for 1 mile

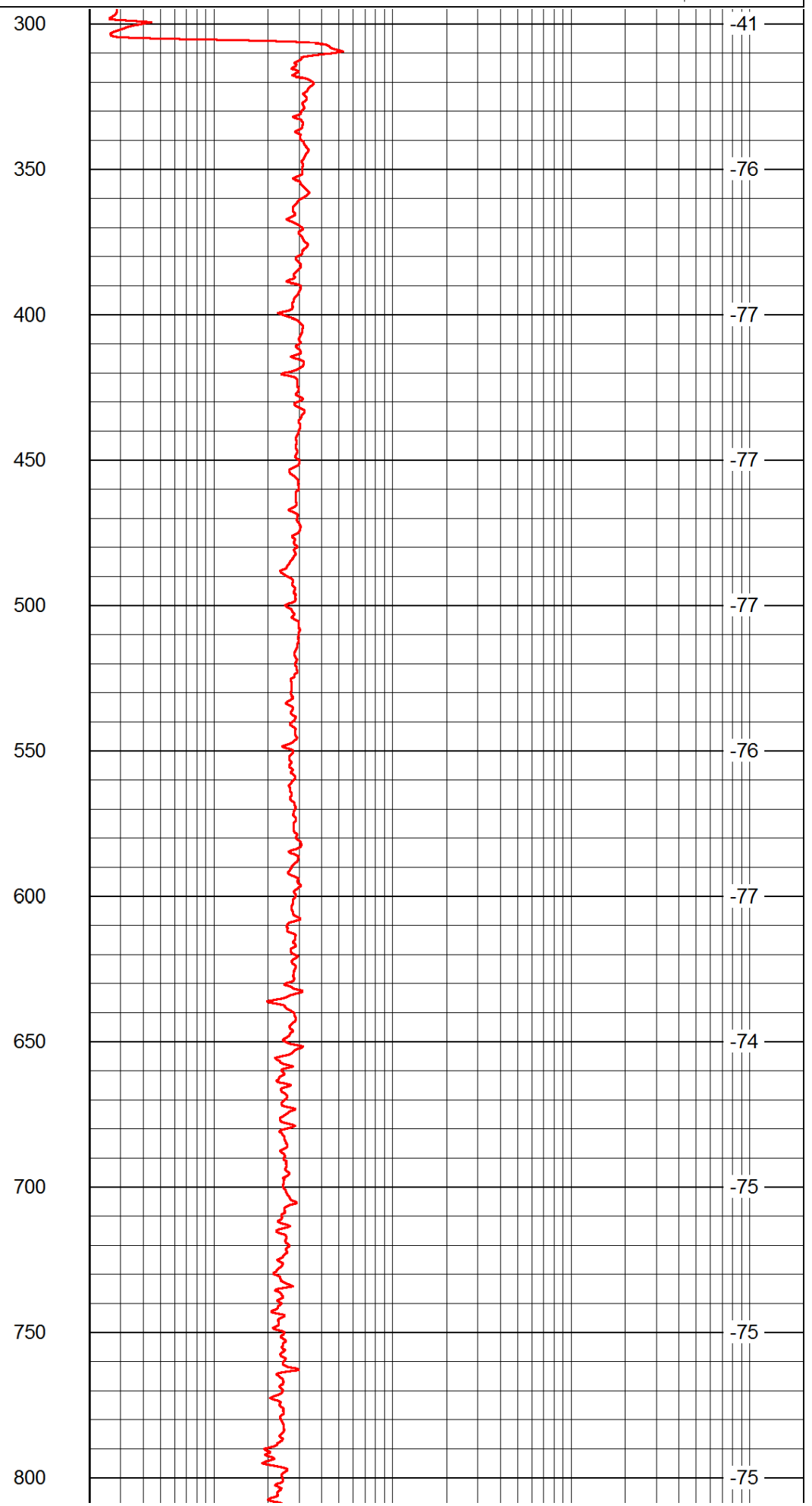
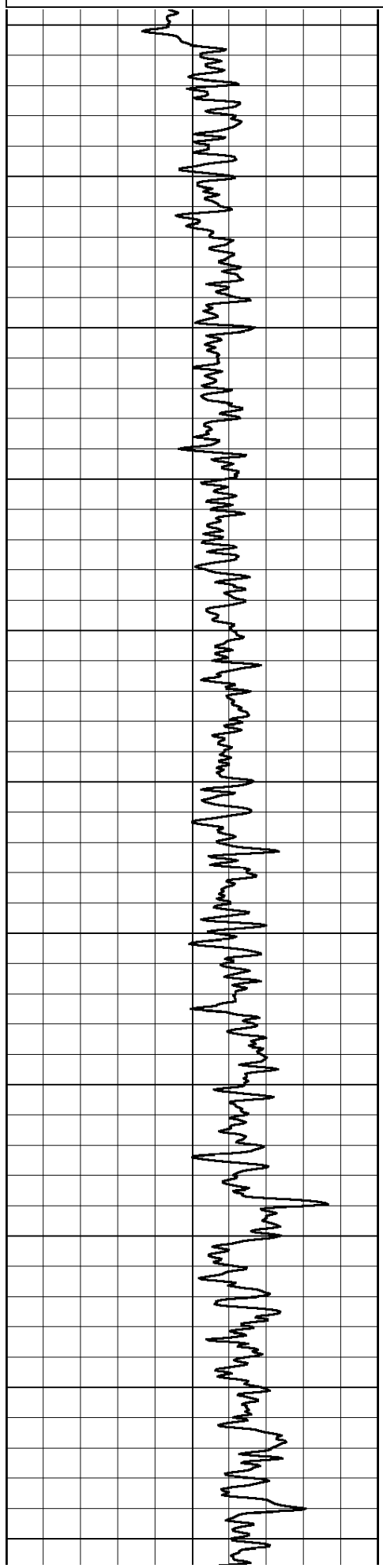
Database File: c:\warrior\data\berexco\_michael #1-22\berhd1.db  
 Dataset Pathname: rag1/berrag  
 Presentation Format: rag2in  
 Dataset Creation: Fri Aug 23 11:02:45 2013  
 Charted by: Depth in Feet scaled 1:600

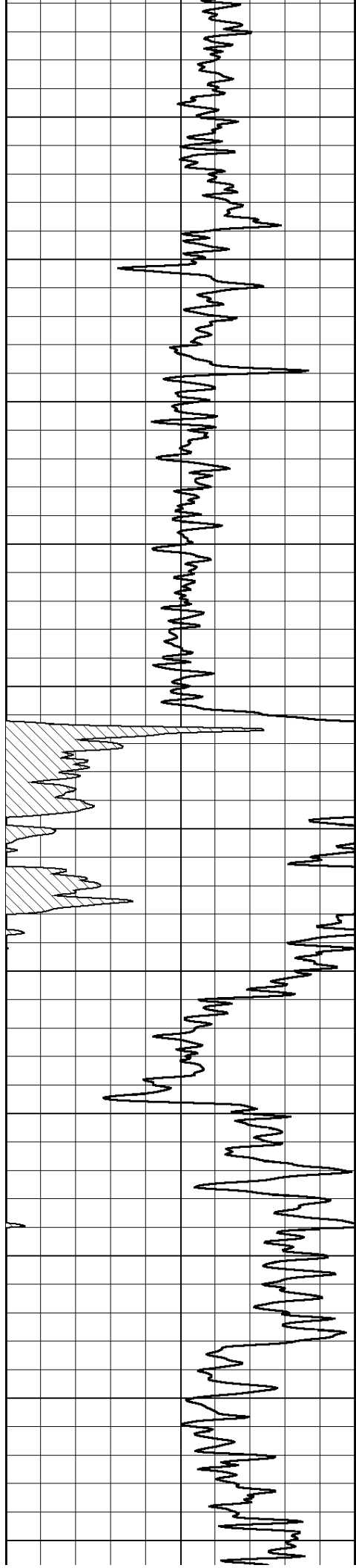
0 Gamma Ray 150

0.2 lgrd

2000

LSPD





850

900

950

1000

1050

1100

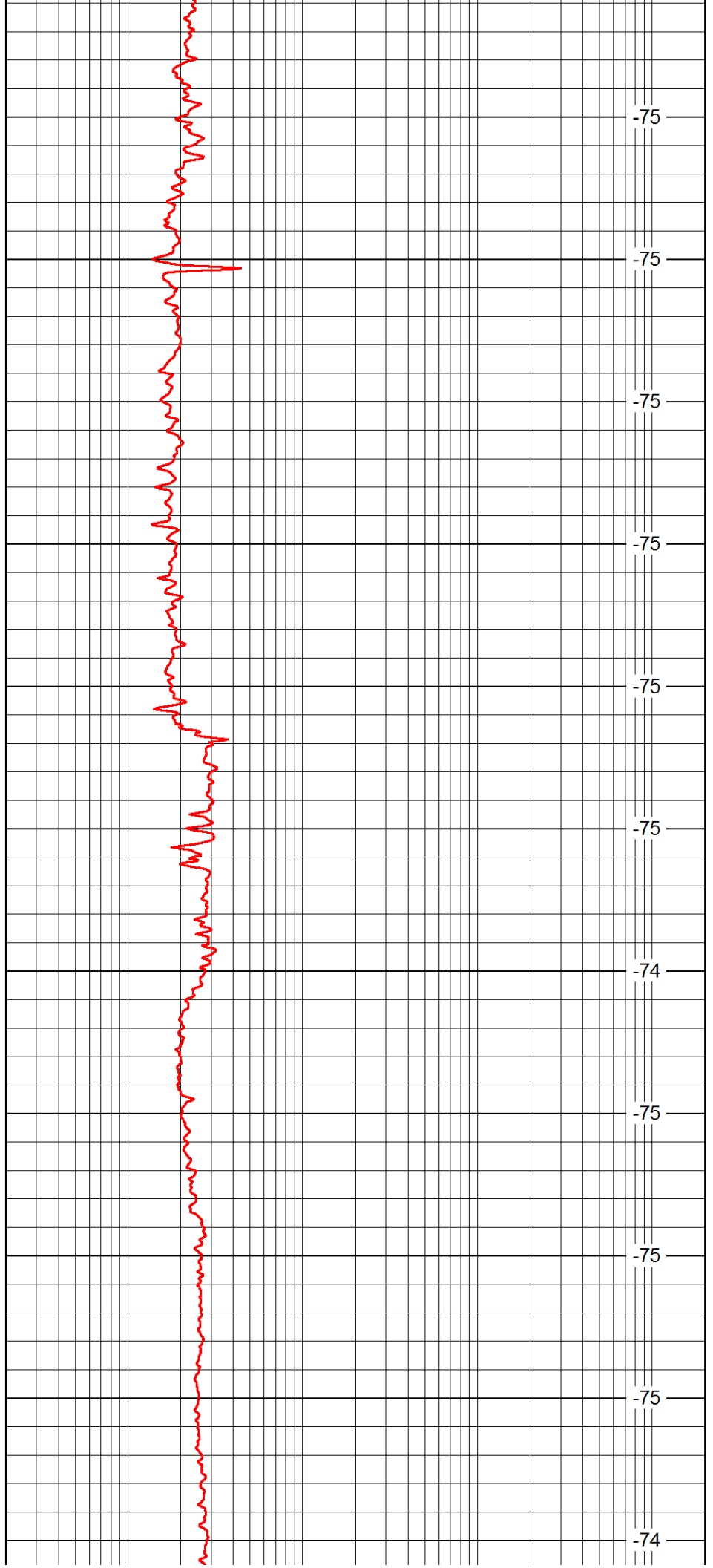
1150

1200

1250

1300

1350



-75

-75

-75

-75

-75

-75

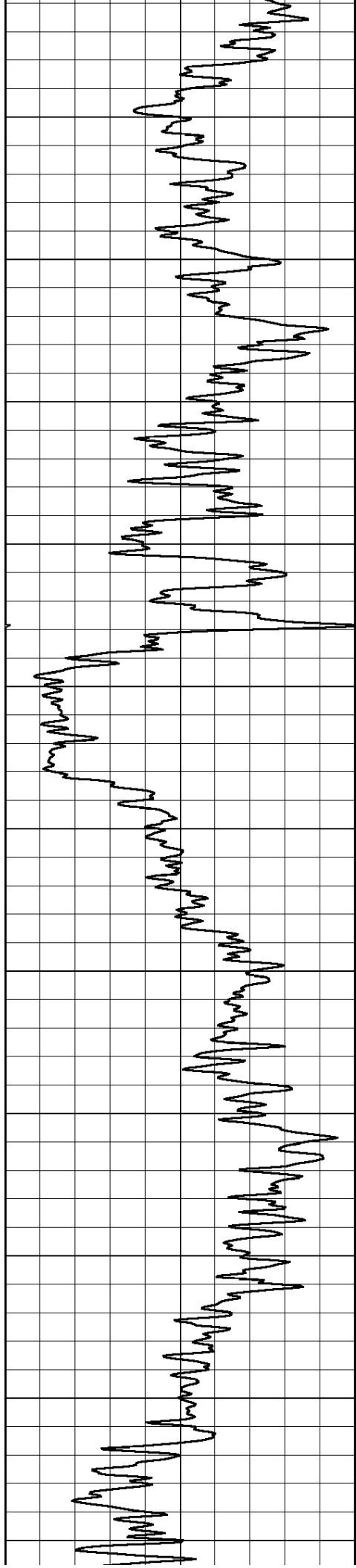
-74

-75

-75

-75

-74



1400

1450

1500

1550

1600

1650

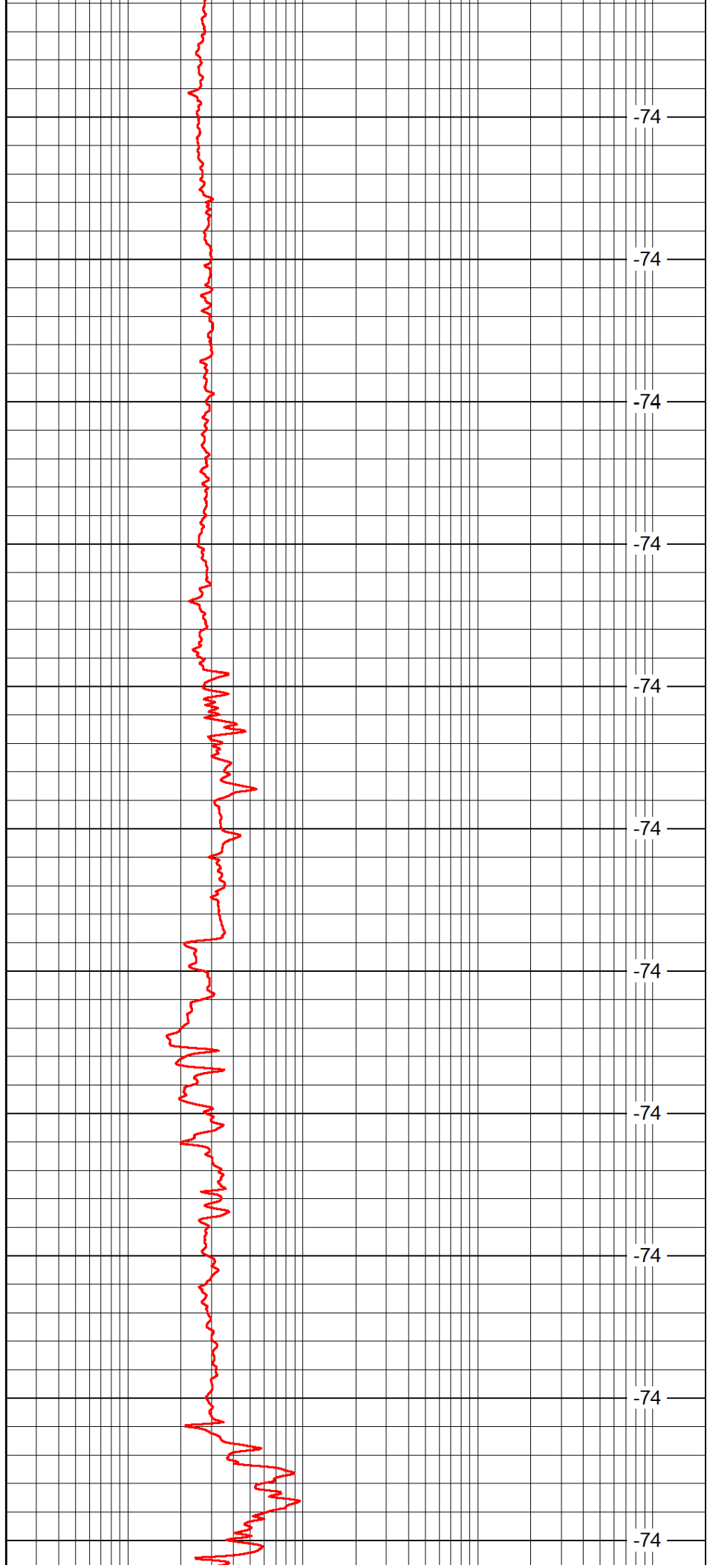
1700

1750

1800

1850

1900



-74

-74

-74

-74

-74

-74

-74

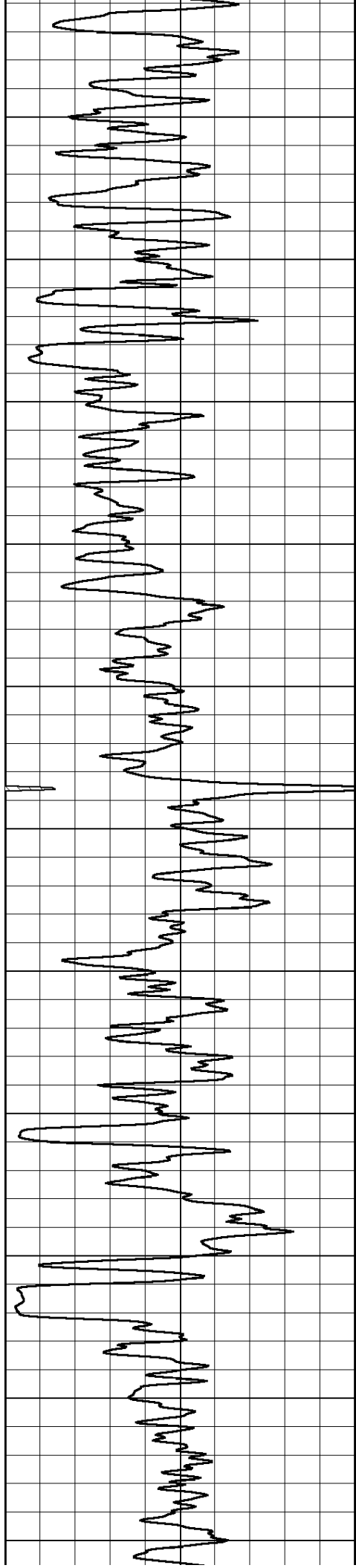
-74

-74

-74

-74





2500

2550

2600

2650

2700

2750

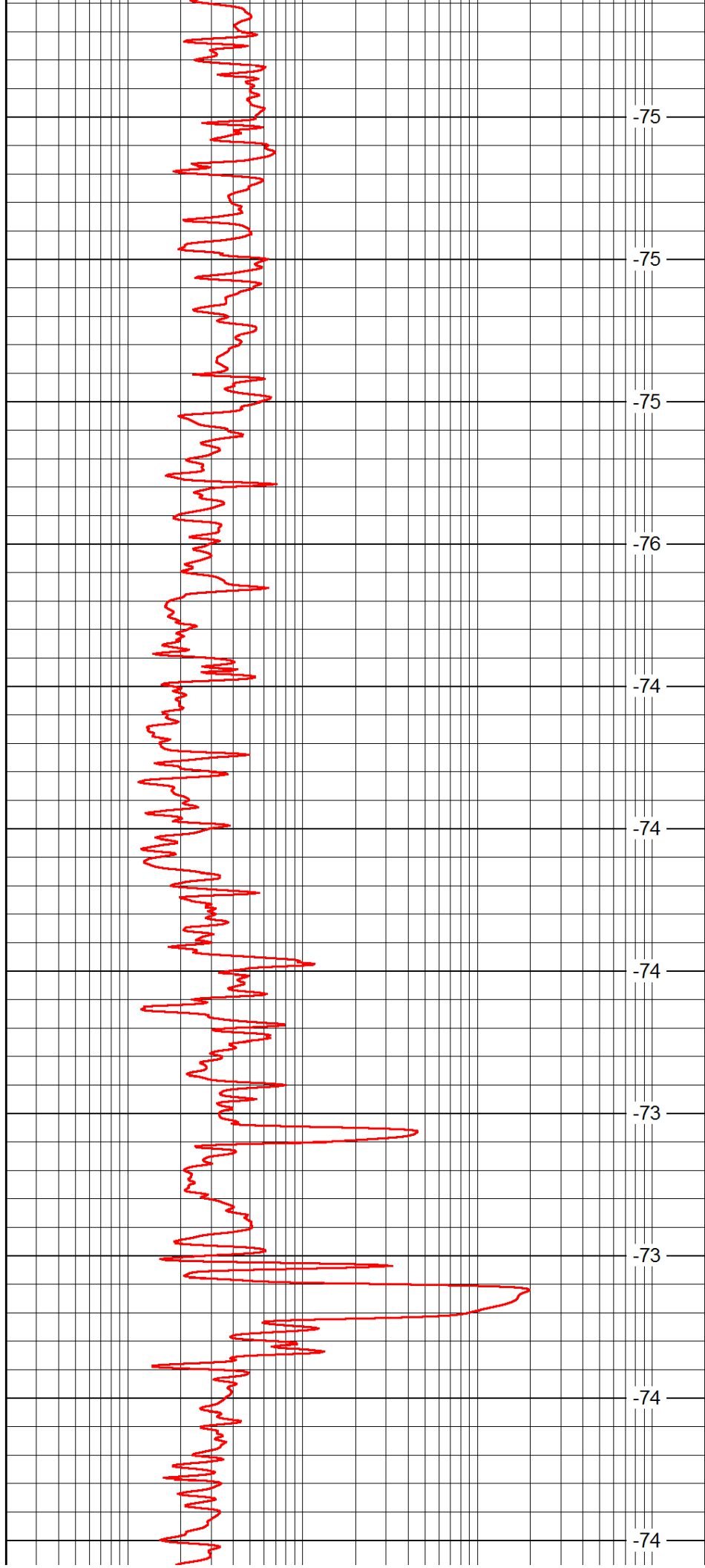
2800

2850

2900

2950

3000



-75

-75

-75

-76

-74

-74

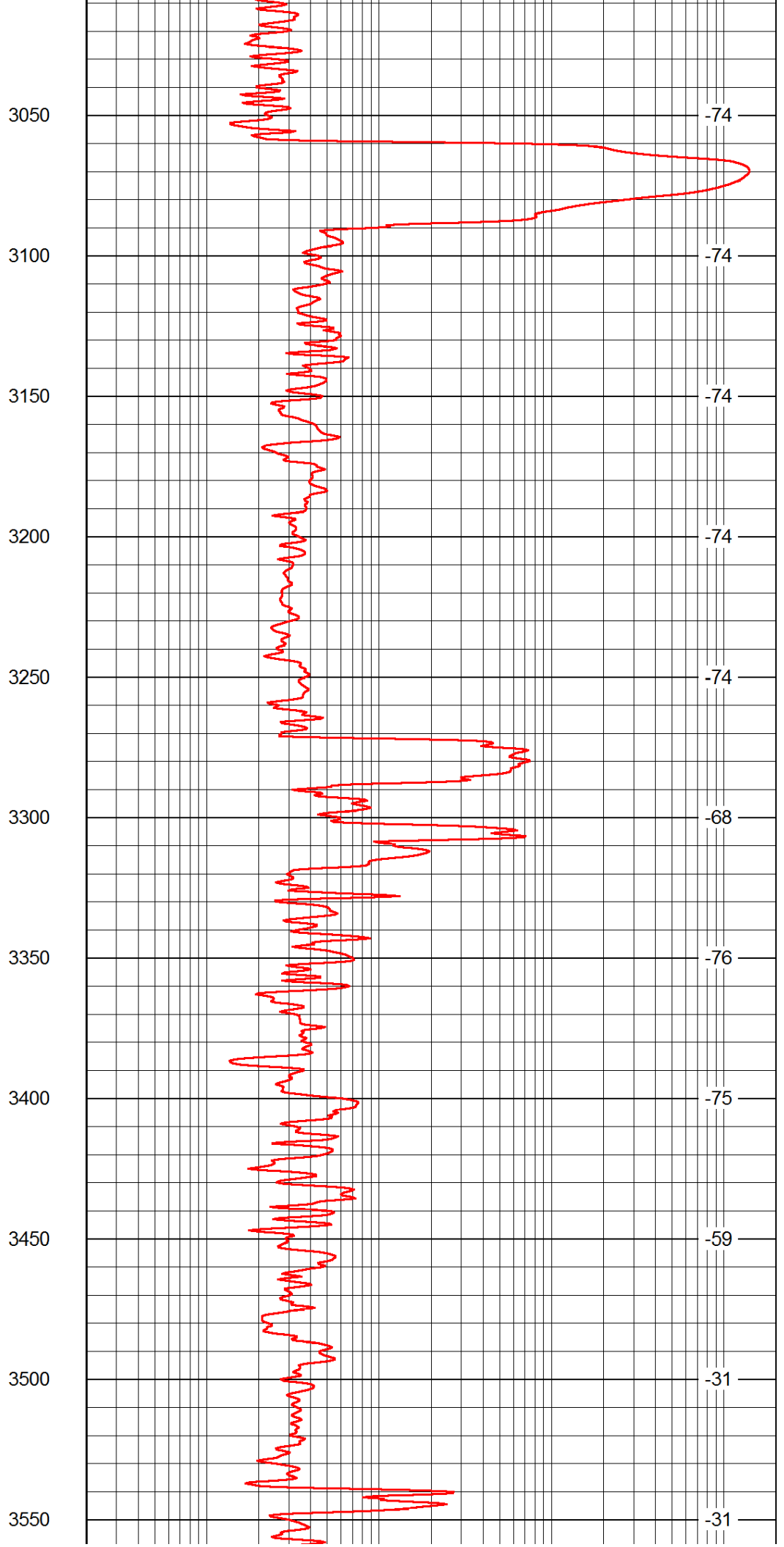
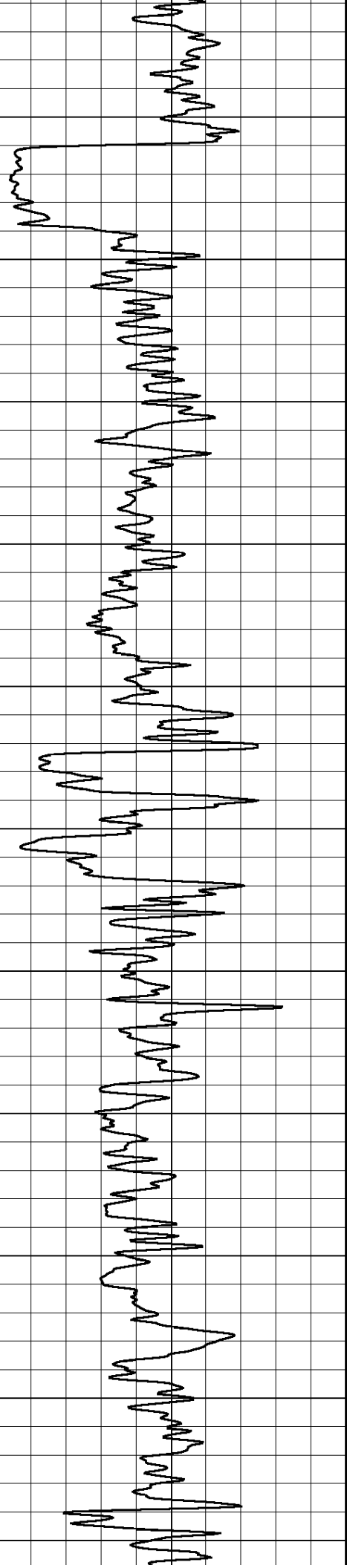
-74

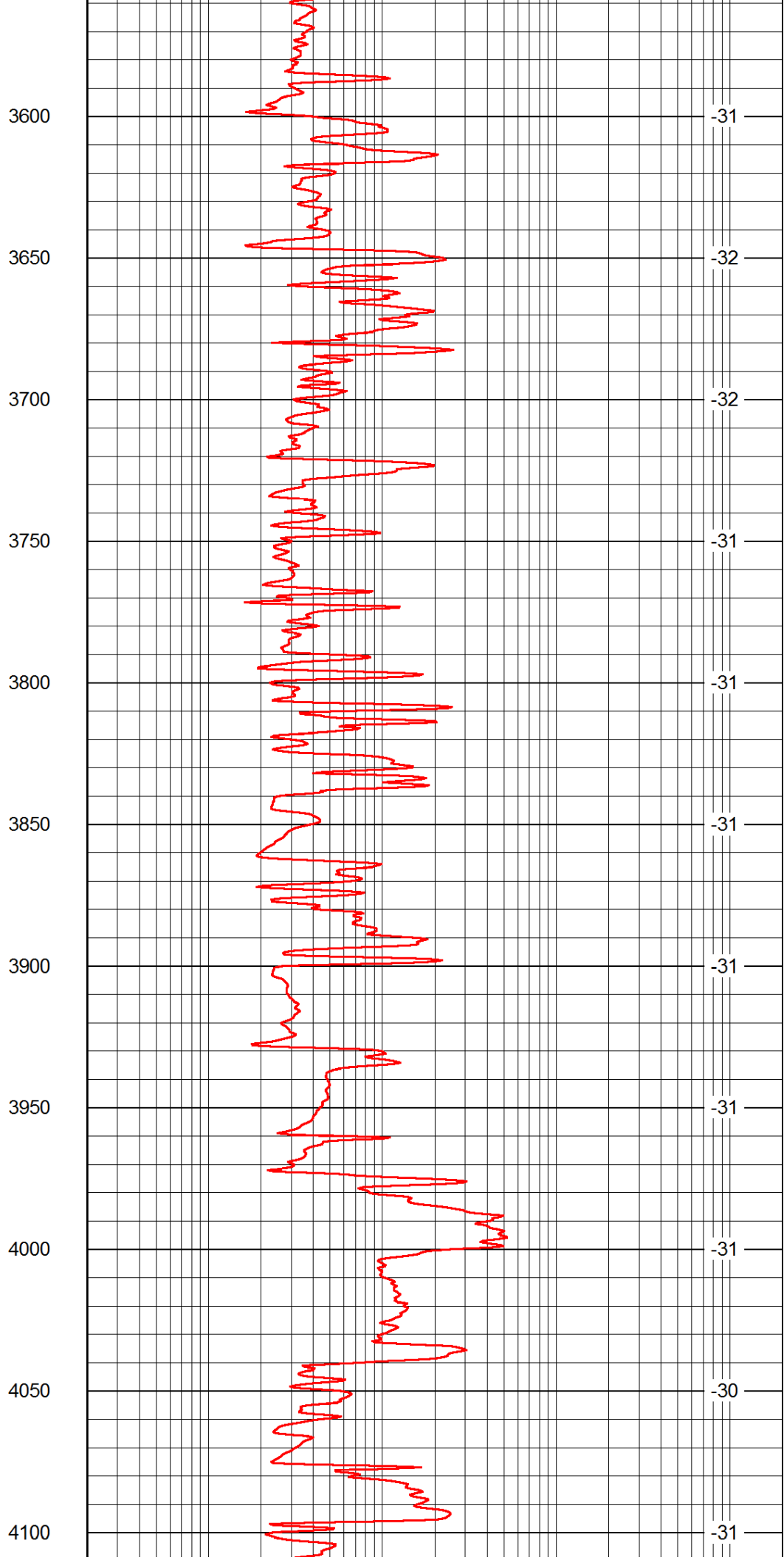
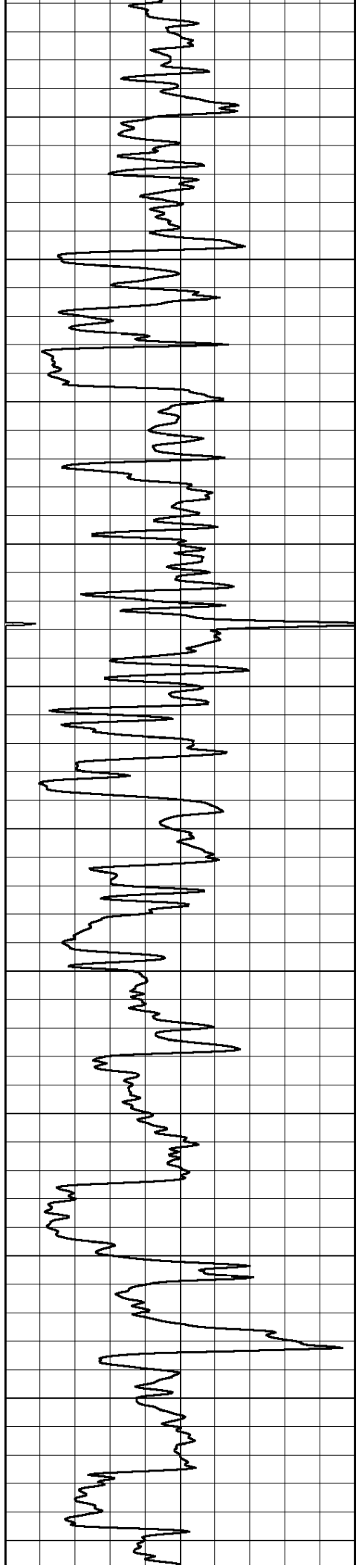
-73

-73

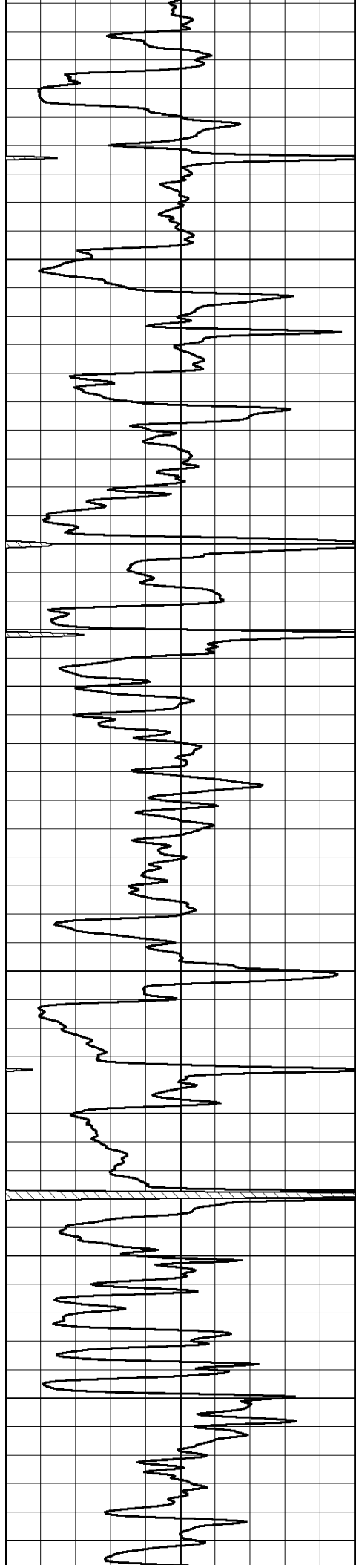
-74

-74









4150

4200

4250

4300

4350

4400

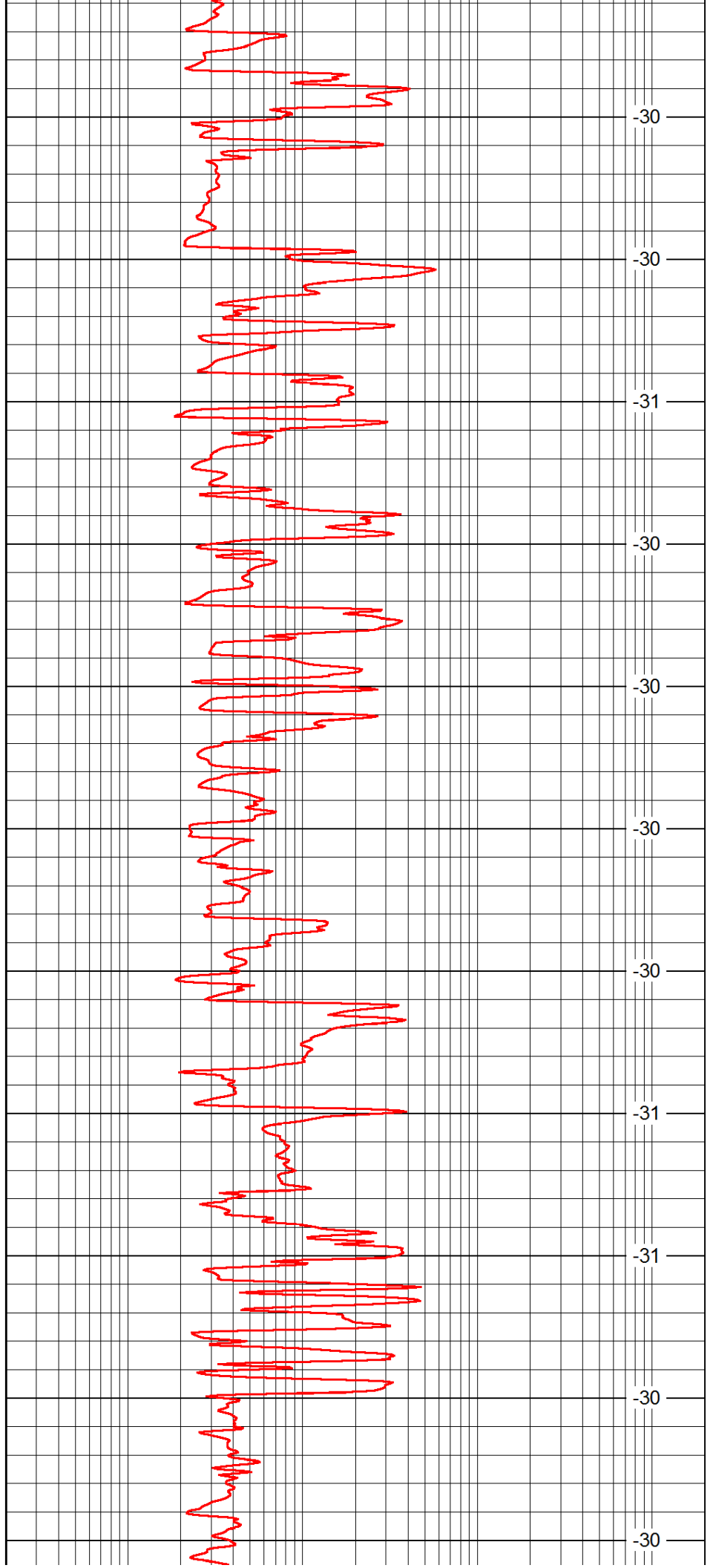
4450

4500

4550

4600

4650



-30

-30

-31

-30

-30

-30

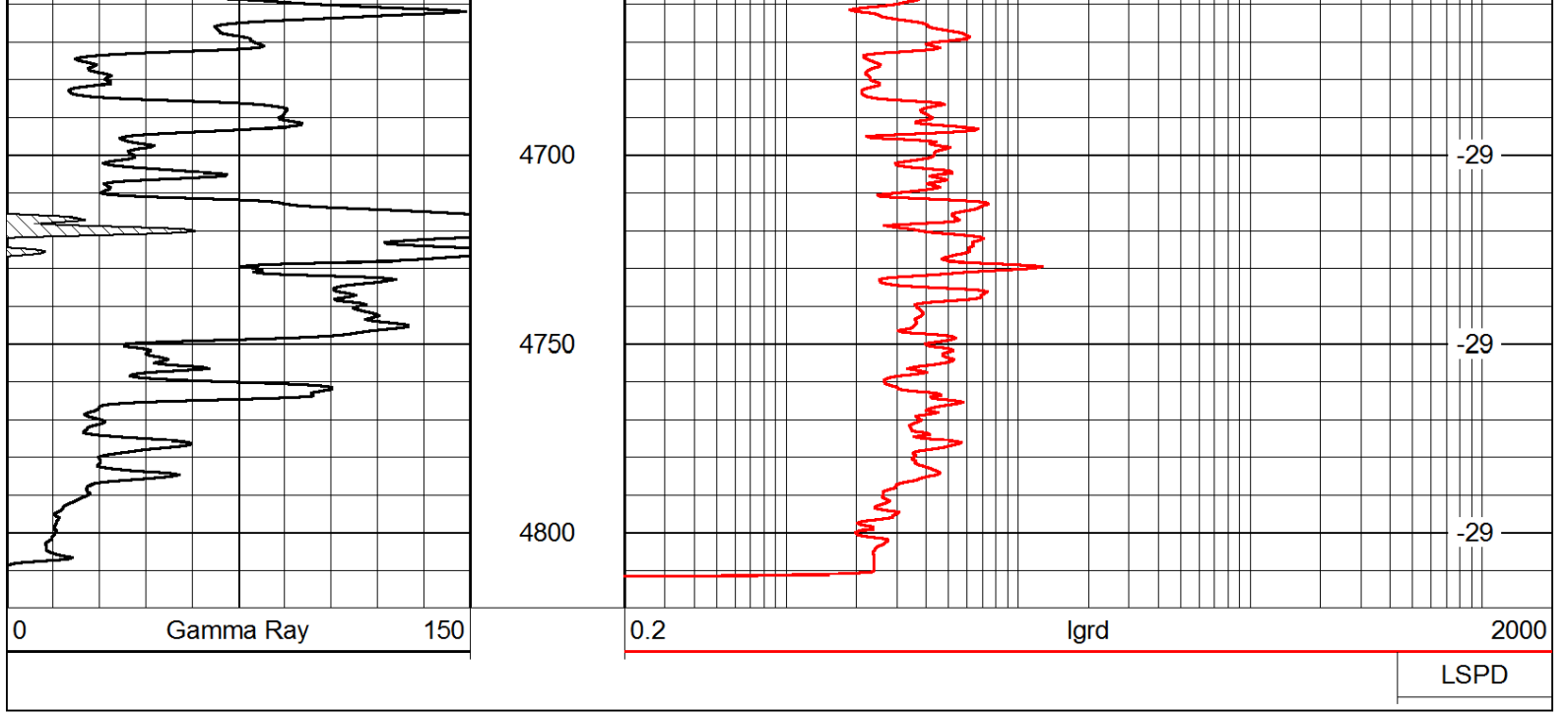
-30

-31

-31

-30

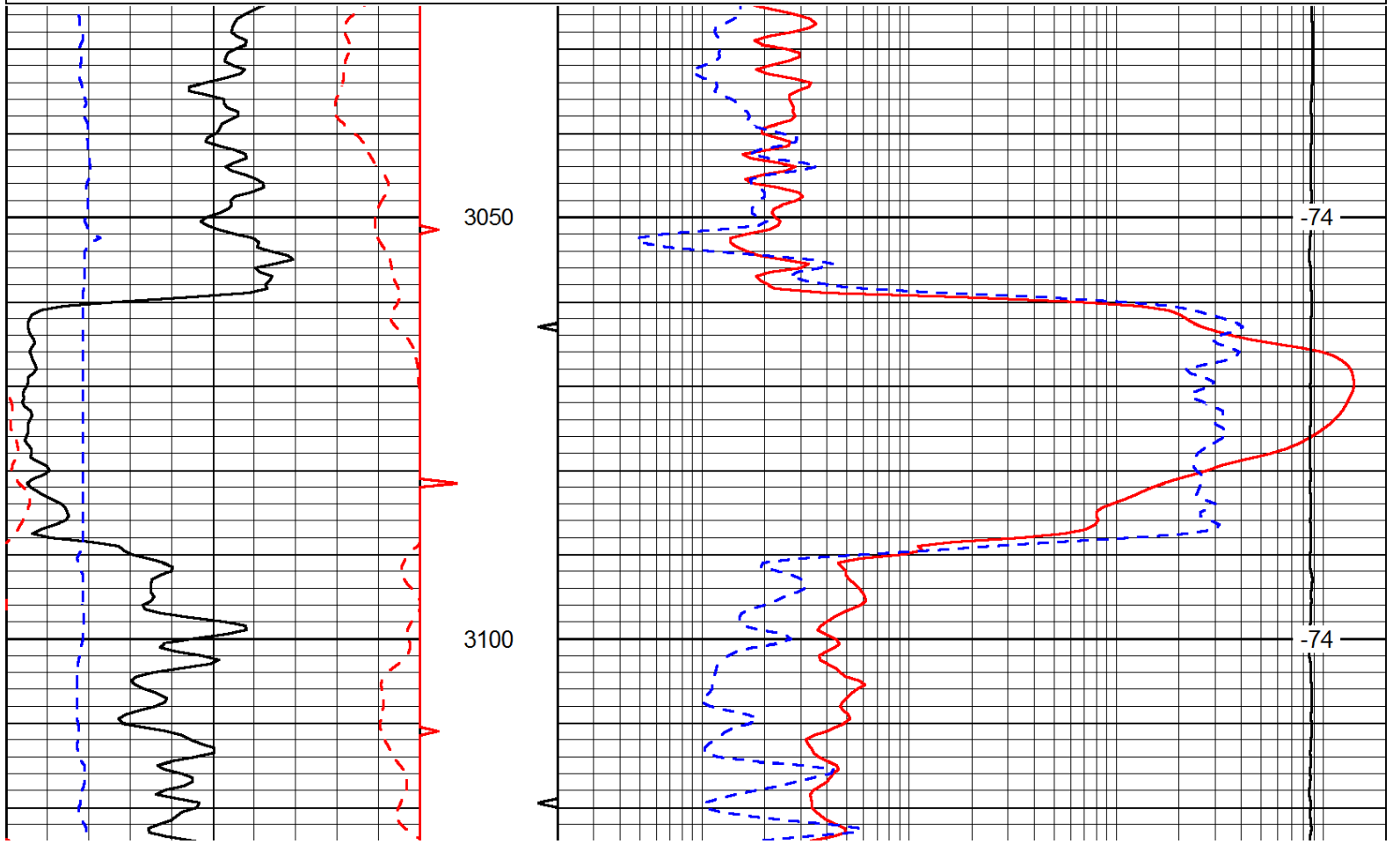
-30



Database File: c:\warrior\data\berexco\_michael #1-22\berhd1.db  
 Dataset Pathname: rag1/berrag  
 Presentation Format: rag  
 Dataset Creation: Fri Aug 23 11:02:45 2013  
 Charted by: Depth in Feet scaled 1:240

0	Gamma Ray	150	0.2	Long Guard	2000
6	Caliper (GAPI)	16	560	Neuton	2160
-200	SP (mV)	0	15000	Line Tension	0

LSPD



0	Gamma Ray	150
6	Caliper (GAPI)	16
-200	SP (mV)	0

0.2	Long Guard	2000
560	Neuton	2160
15000	Line Tension	0

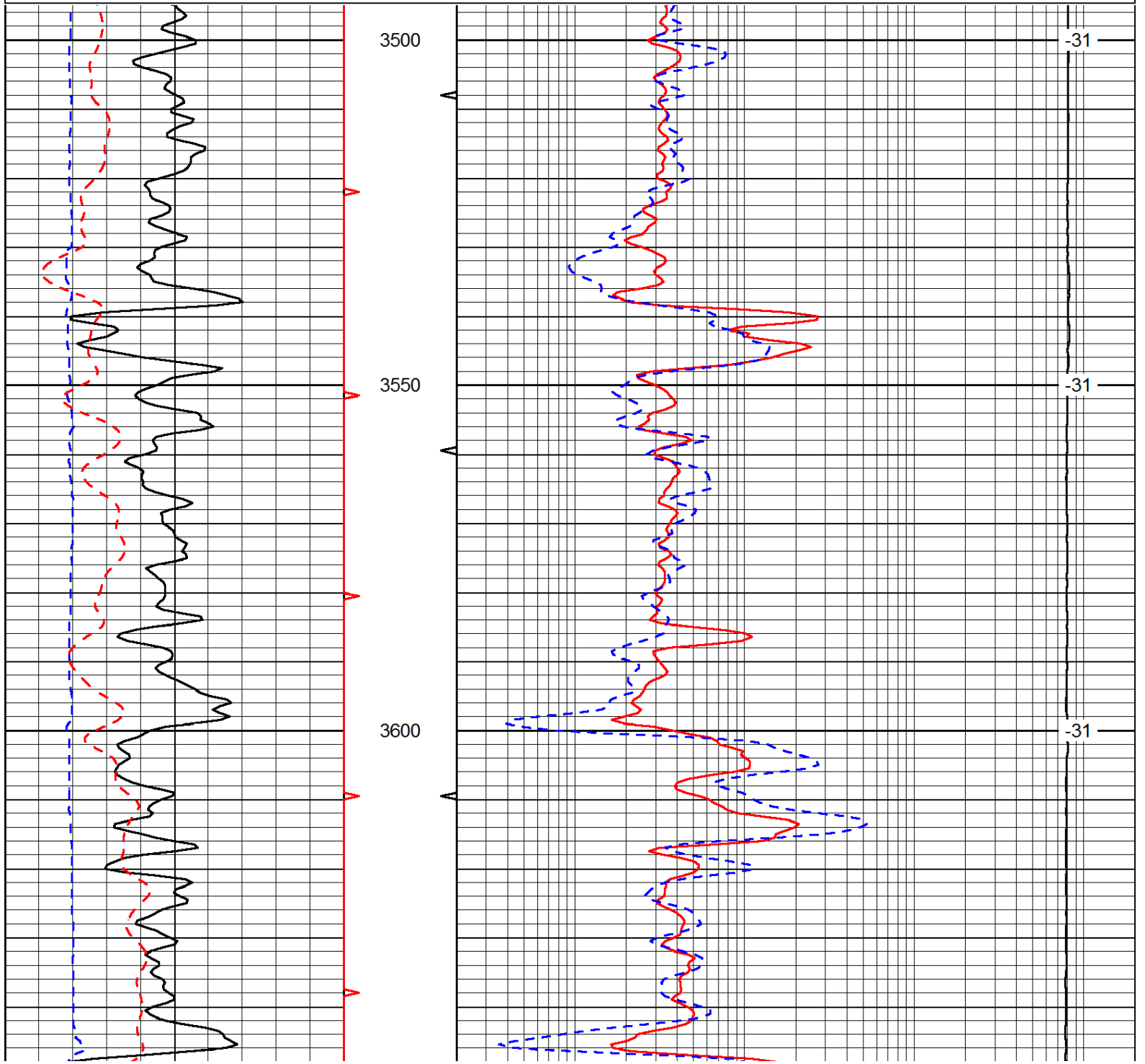
LSPD

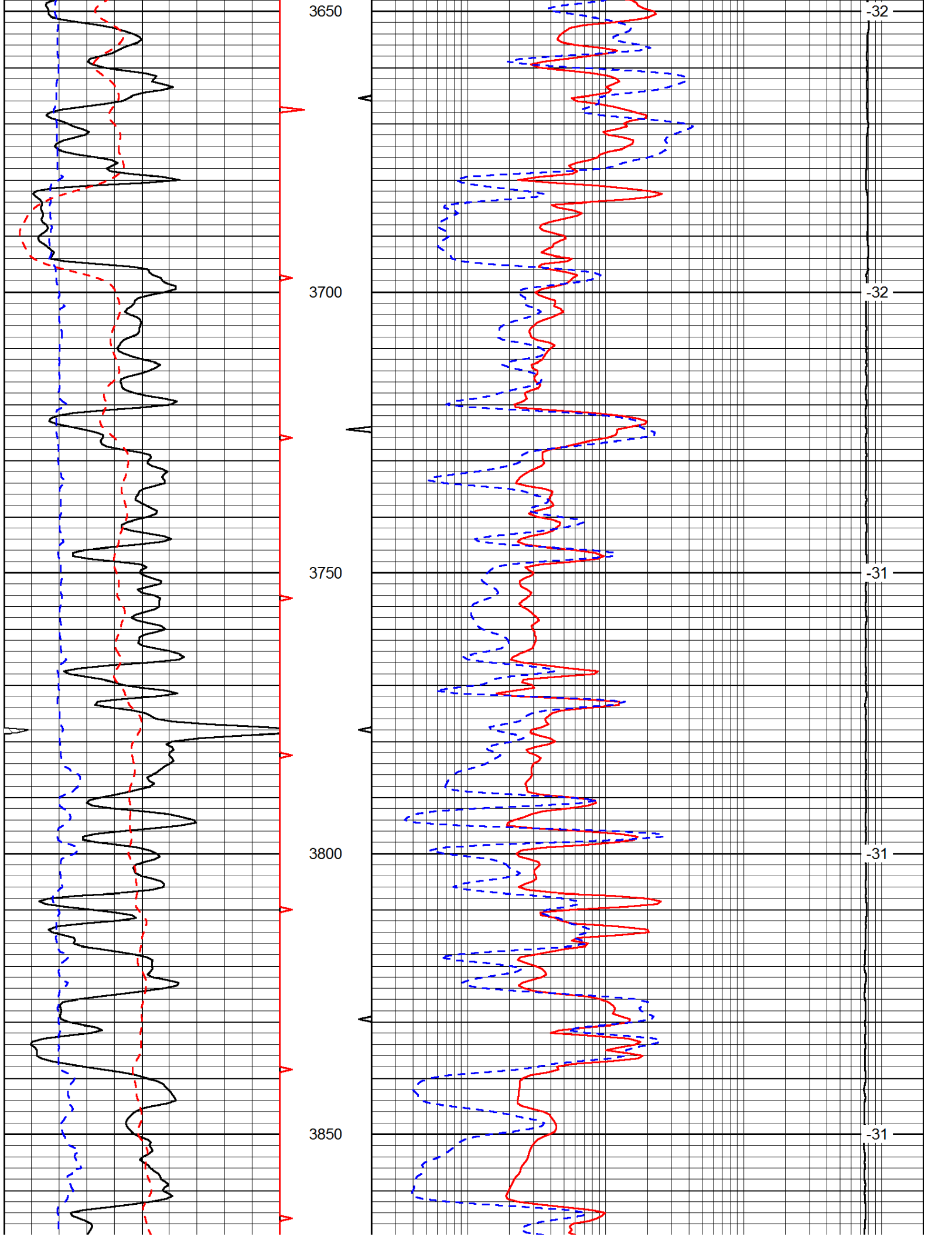
Database File: c:\warrior\data\berexco\_michael #1-22\berhd1.db  
 Dataset Pathname: rag1/berrag  
 Presentation Format: rag  
 Dataset Creation: Fri Aug 23 11:02:45 2013  
 Charted by: Depth in Feet scaled 1:240

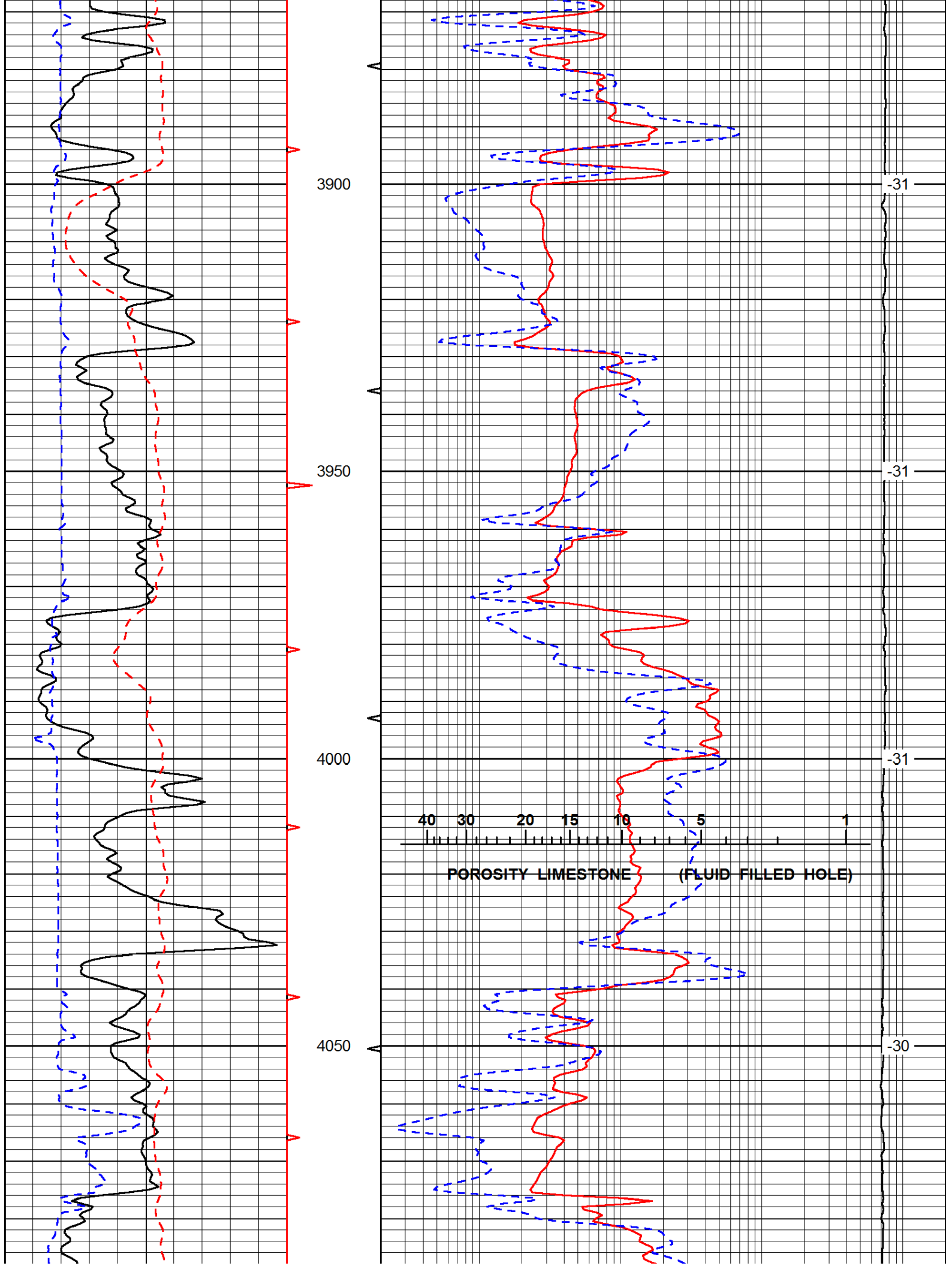
0	Gamma Ray	150
6	Caliper (GAPI)	16
-200	SP (mV)	0

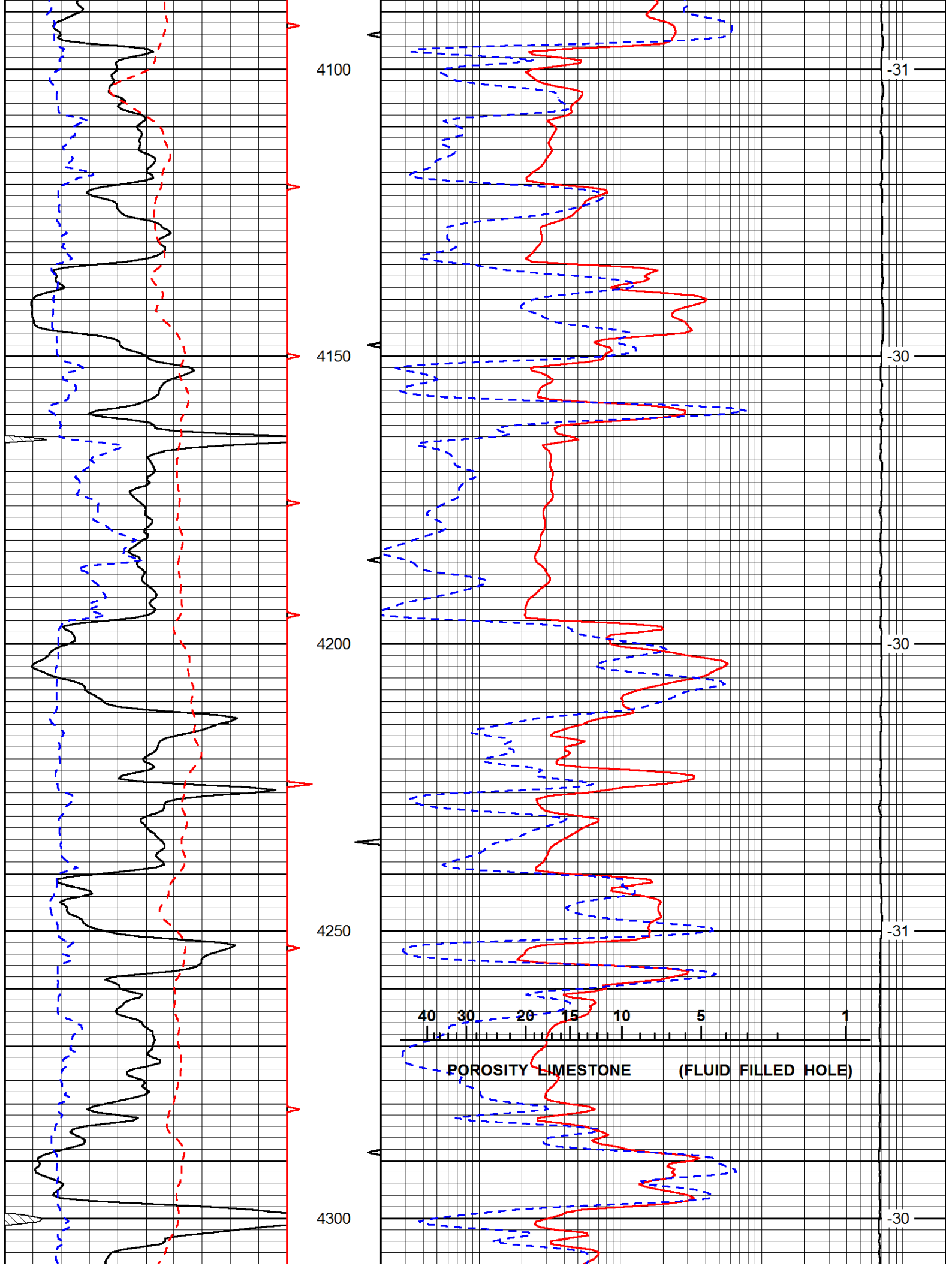
0.2	Long Guard	2000
560	Neuton	2160
15000	Line Tension	0

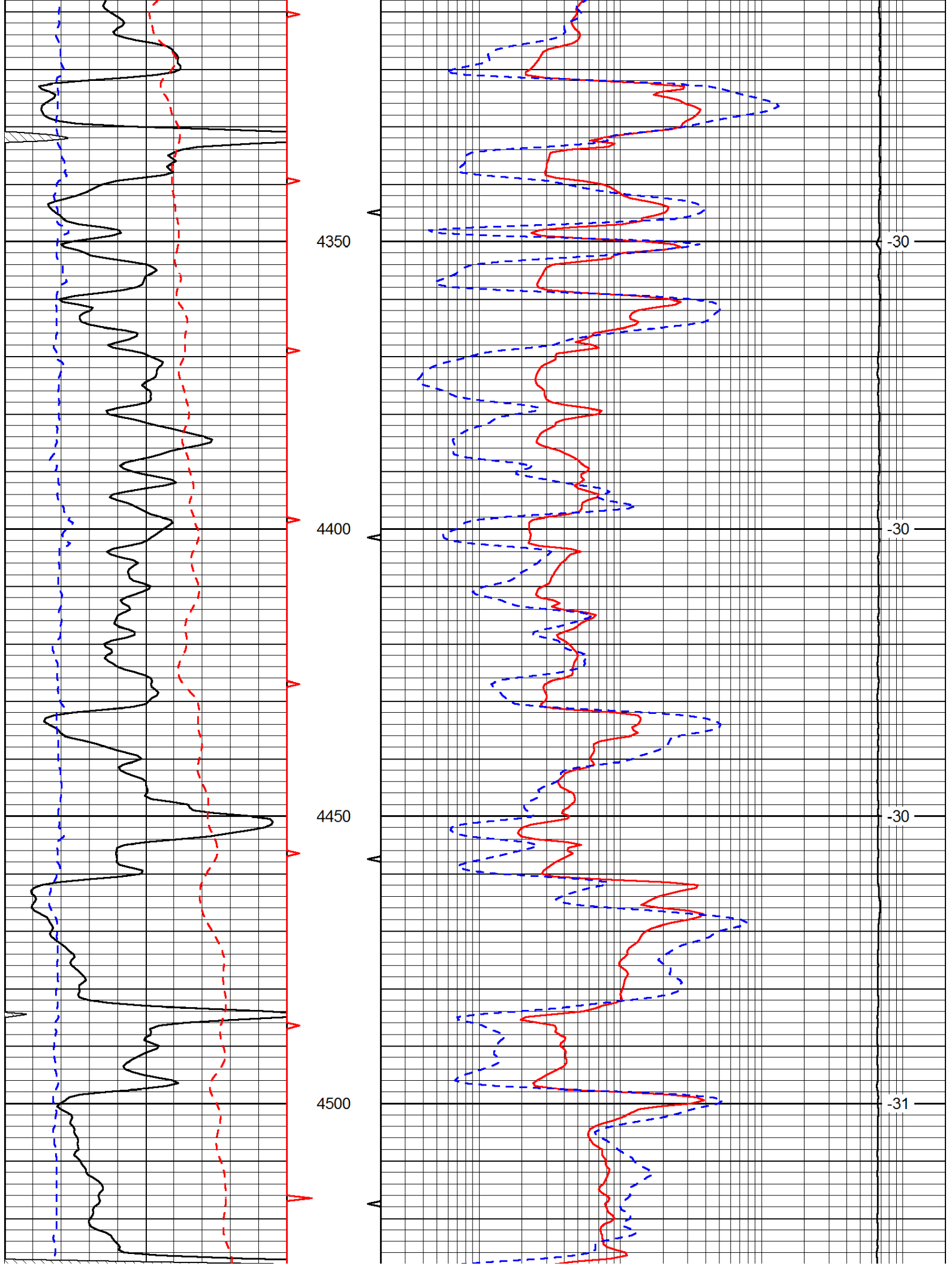
LSPD

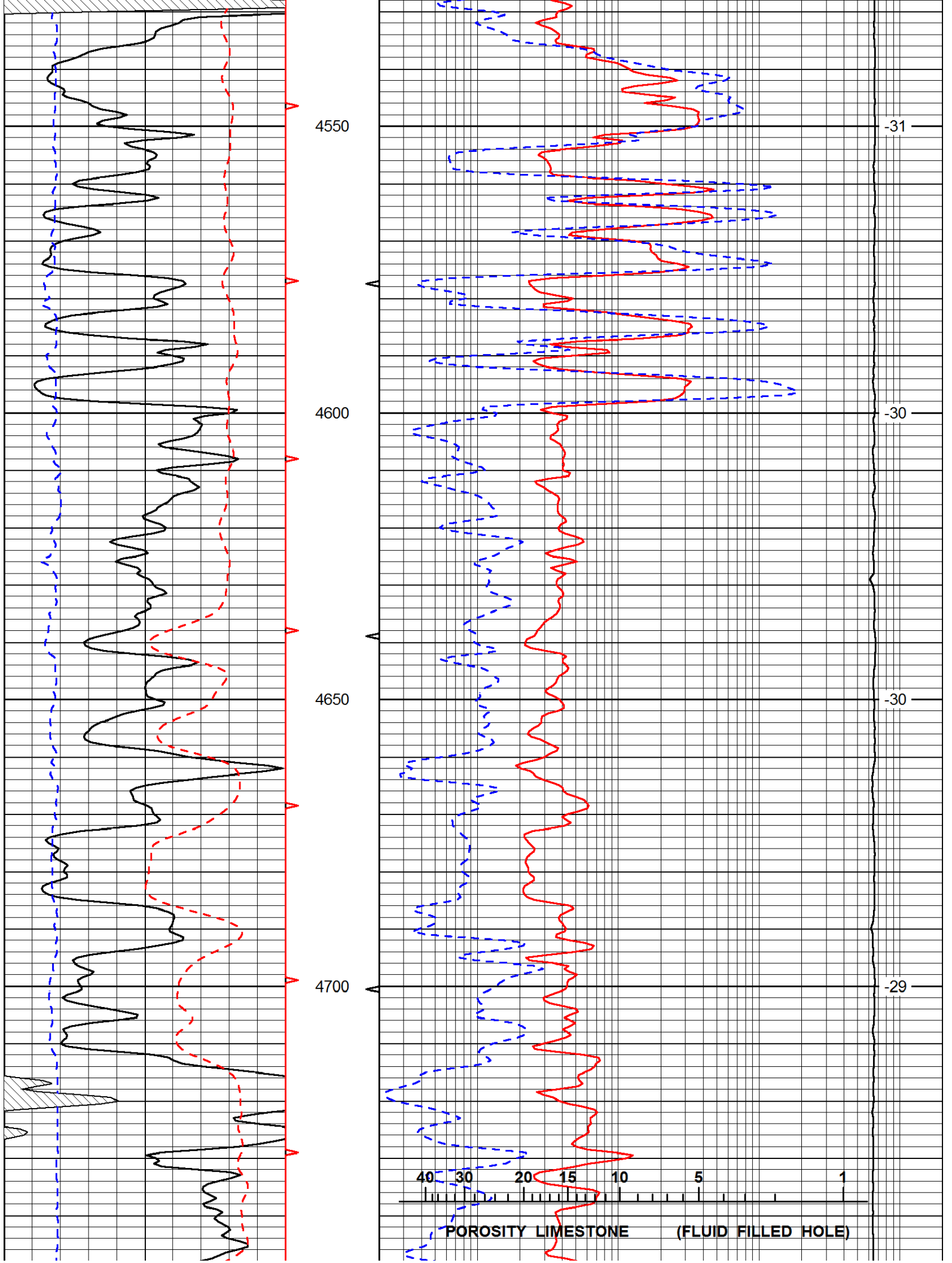




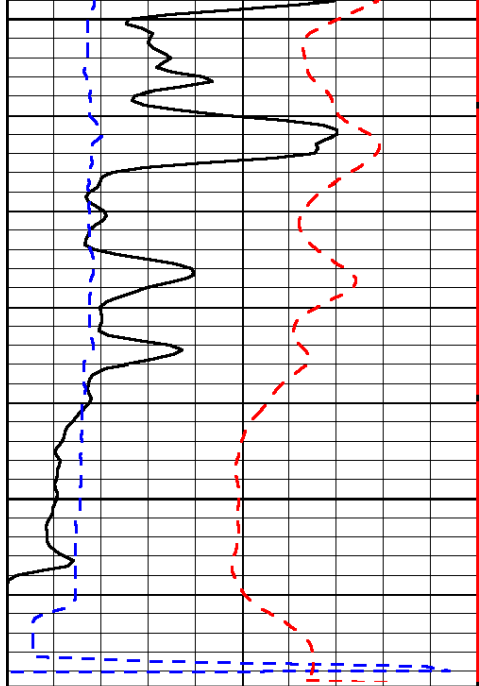




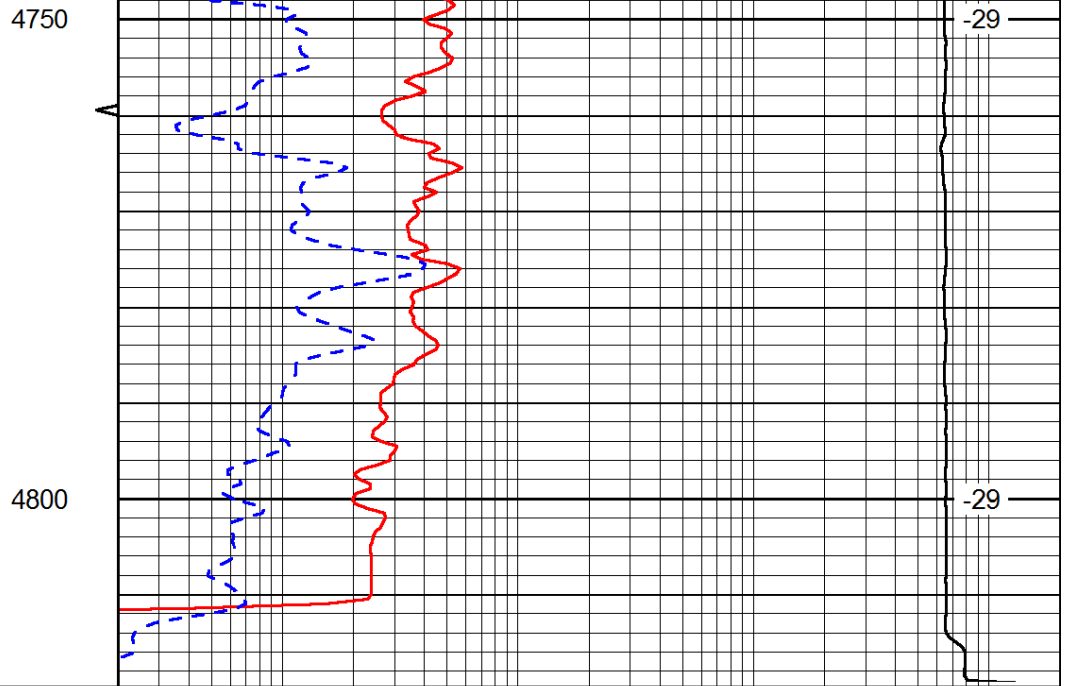








0	Gamma Ray	150
6	Caliper (GAPI)	16
-200	SP (mV)	0



0.2	Long Guard	2000
560	Neuton	2160
15000	Line Tension	0

LSPD