



Pioneer Energy Services

# Borehole Compensated Sonic Log

15-153-20,936-00-00

API No.

Company **Berexco, LLC**  
Well **Michael #1-22**  
Field **Wildcat**  
County **Rawlins**

State **Kansas**

Location **2200' FNL & 880' FEL**

Sec: **22** Twp: **1S** Rge: **36W**

Permanent Datum **Ground Level** Elevation **3147**  
Log Measured From **Kelly Bushing** 11 Ft. Above Perm. Datum  
Drilling Measured From **Kelly Bushing**

Other Services  
**RAG/MEL**  
Elevation  
K.B. 3158  
D.F. 3147  
G.L. 3147

Date	8/23/2013	
Run Number	Two	
Type Log	BHC Sonic	
Depth Driller	4810	
Depth Logger	4814	
Bottom Logged Interval	4803	
Top Logged Interval	300	
Type Fluid In Hole	Chemical	
Salinity, PPM CL	2,800	
Density	9.1	
Level	Full	
Max. Rec. Temp. F	124	
Operating Rig Time	5 Hours	
Equipment -- Location	17 Days	
Recorded By	C. Desaire	
Witnessed By	Bryan Bynog	

Borehole Record				Casing Record			
Run No.	Bit	From	To	Size	Wgt.	From	To
1	12.25	00	315	8.625	24#	00	315
2	7.875	315	4810				

<<< Fold Here >>>

All interpretations are opinions based on inferences from electrical or other measurements and we cannot and do not guarantee the accuracy or correctness of any interpretation, and we shall not, except in the case of gross or willful negligence on our part, be liable or responsible for any loss, costs, damages, or expenses incurred or sustained by anyone resulting from any interpretation made by any of our officers, agents or employees. These interpretations are also subject to our general terms and conditions set out in our current Price Schedule.

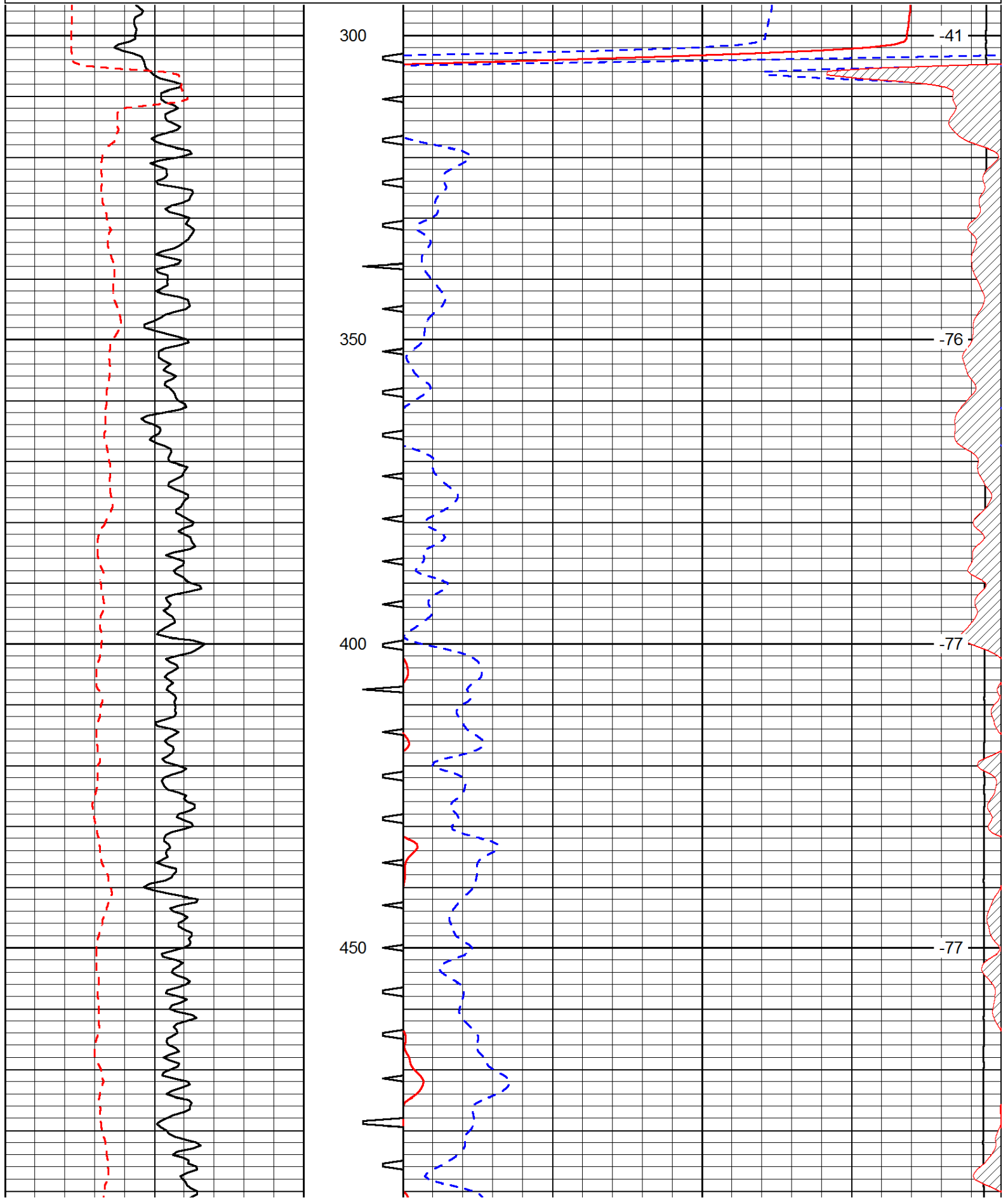
Comments

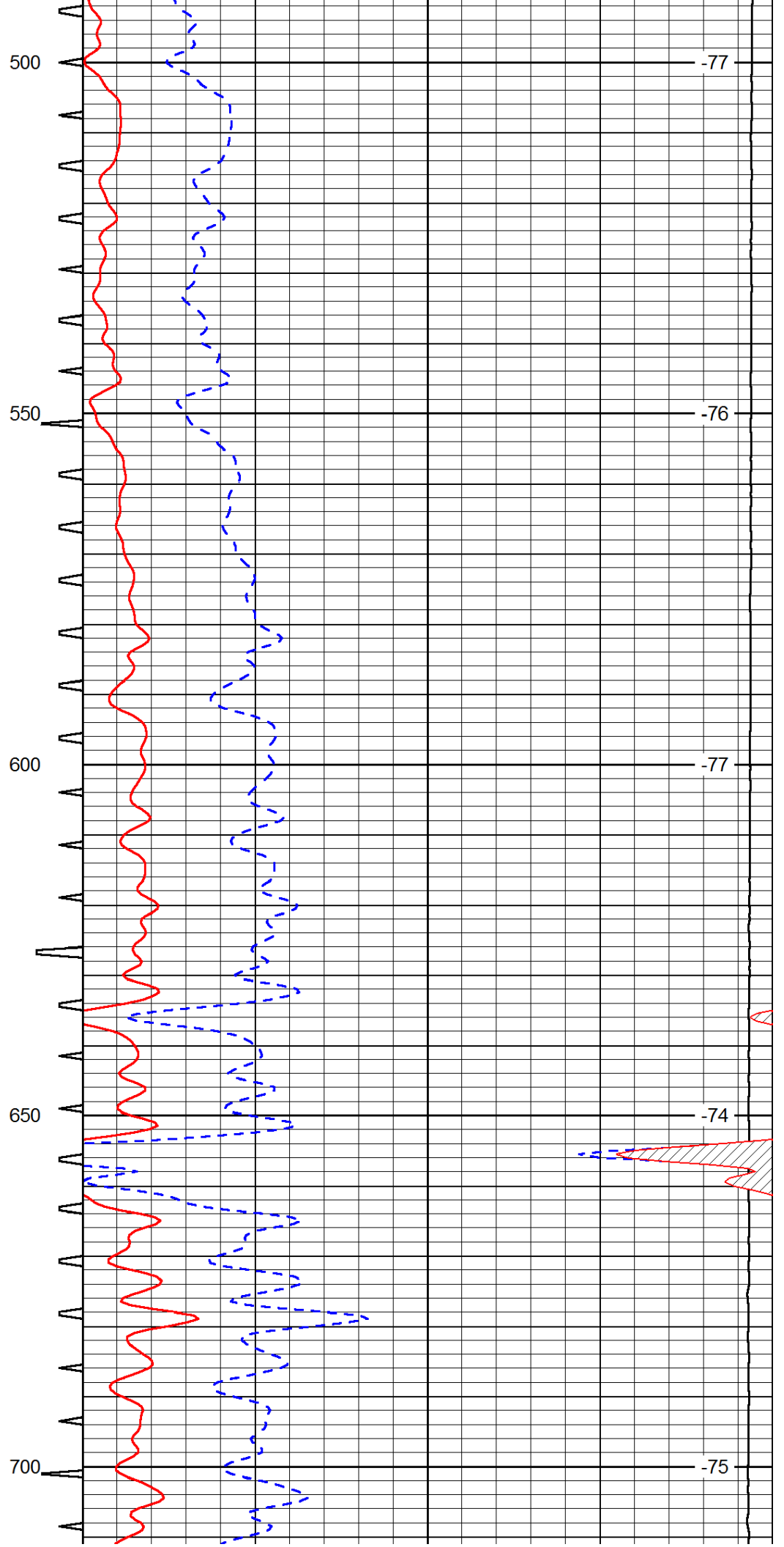
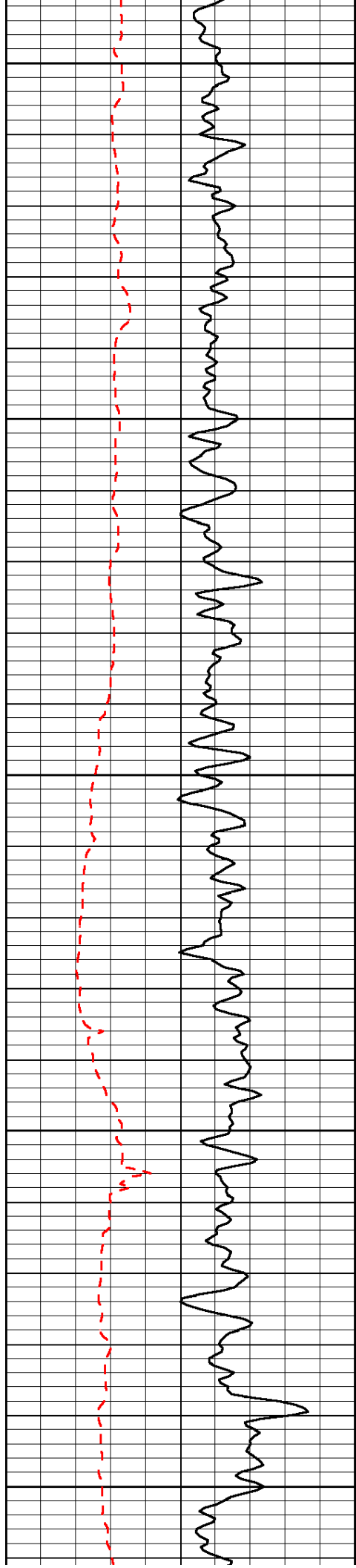
Thank you for using Pioneer Energy Services  
[www.pioneerenergy.com](http://www.pioneerenergy.com)  
 785 625 3858

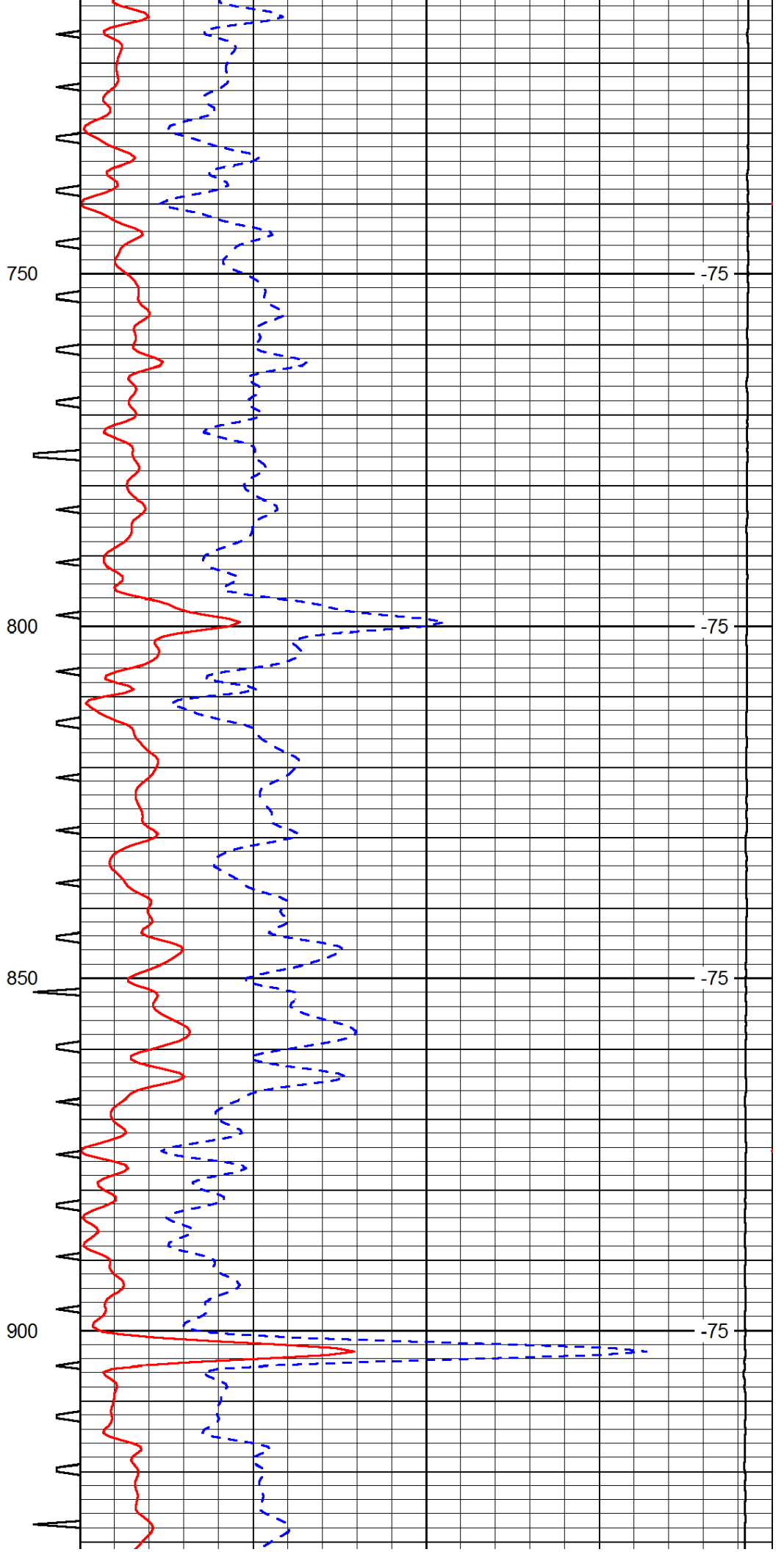
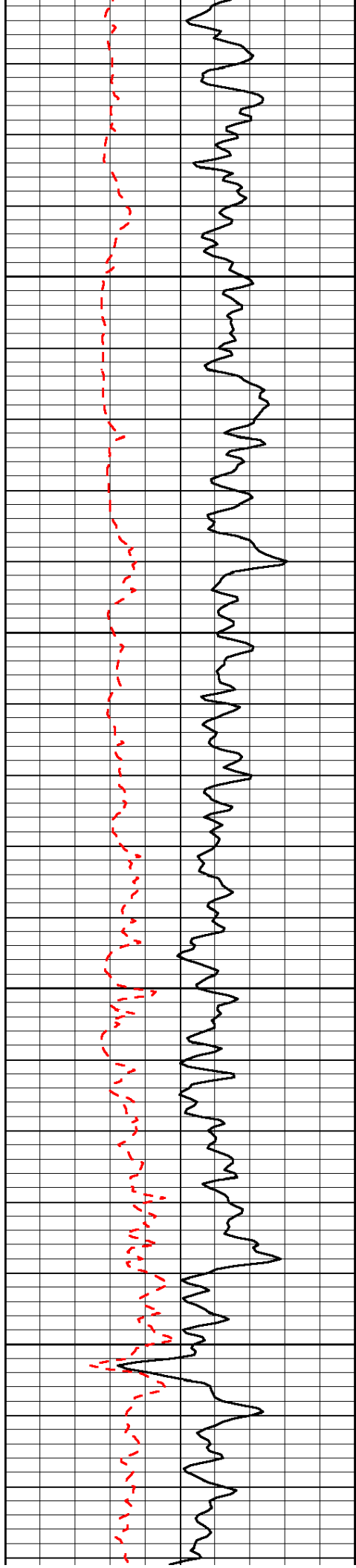
McDonald KS, 12 N to BB Rd, 1 1/2 E,  
 N Into at farmstead for 1 mile

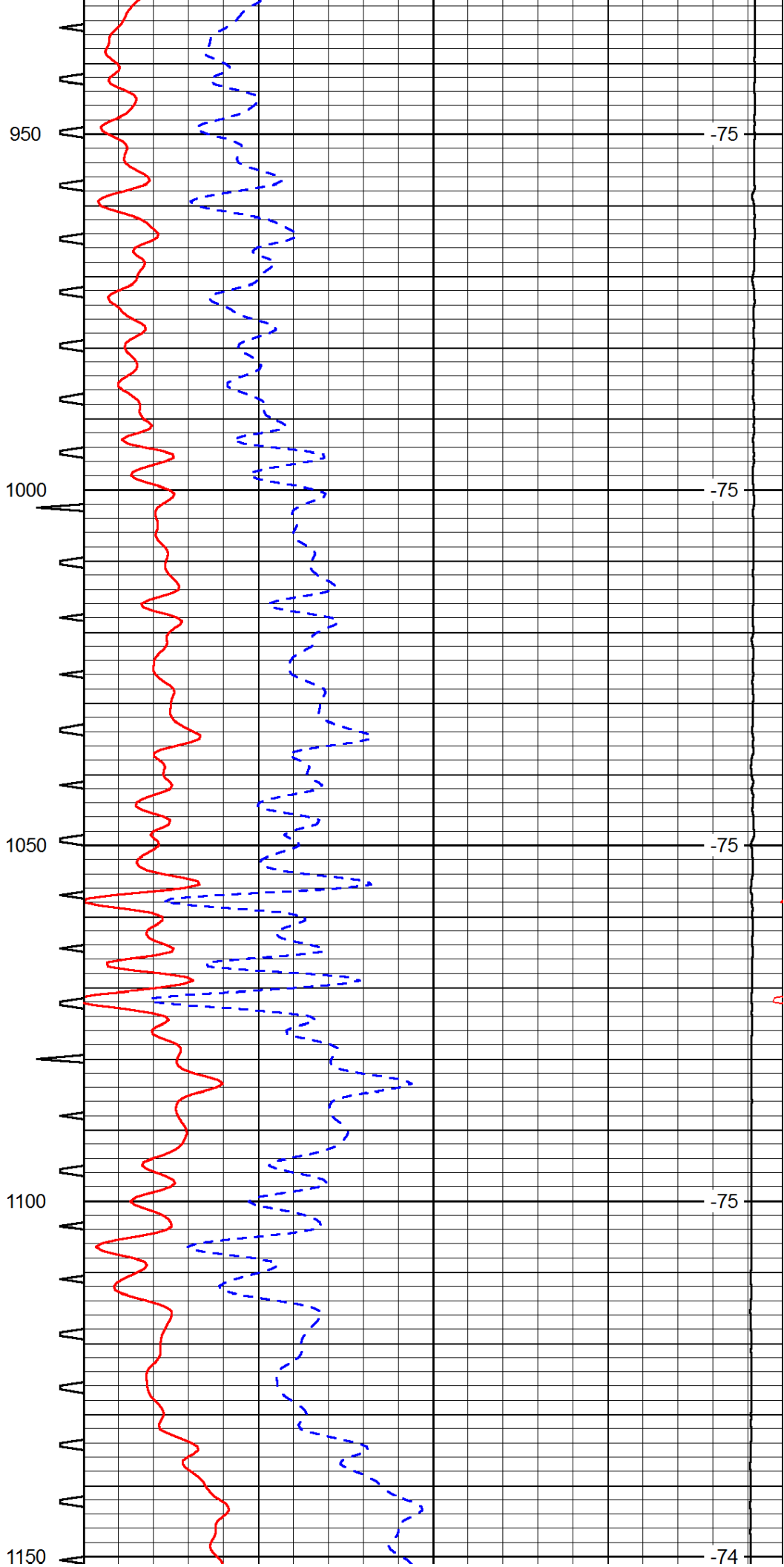
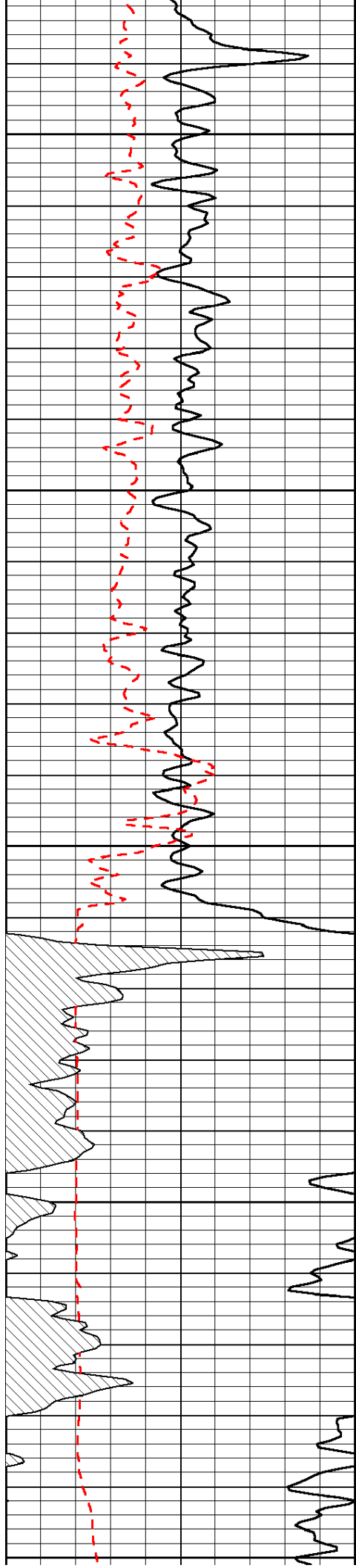
0	Gamma Ray	150	Sonic Int	140	Delta Time (usec/ft)	40
150	Gamma Ray	300	5	0	SPOR	-10
6	scal (GAPI)	16		15000	LTEN (lb)	0

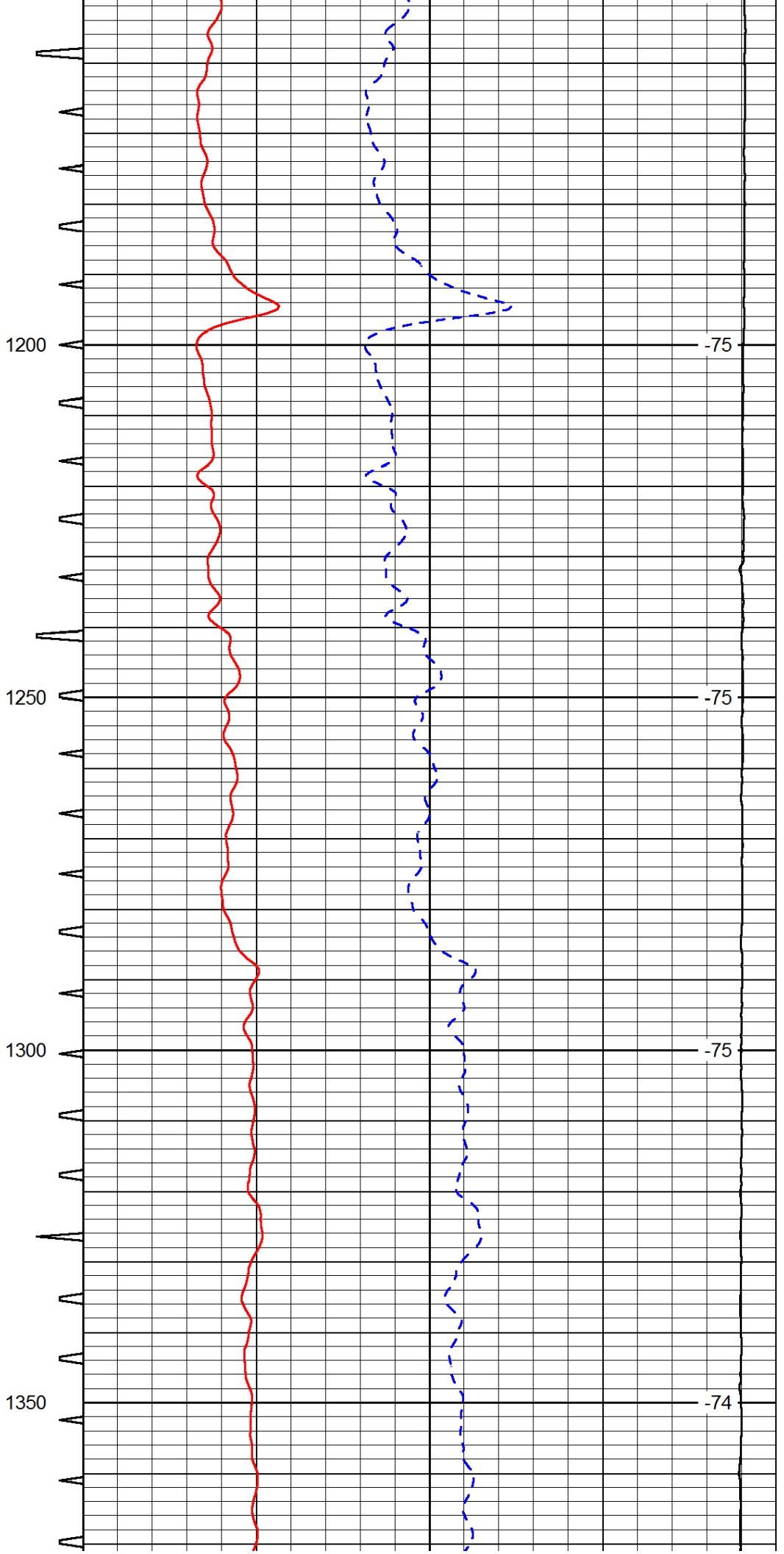
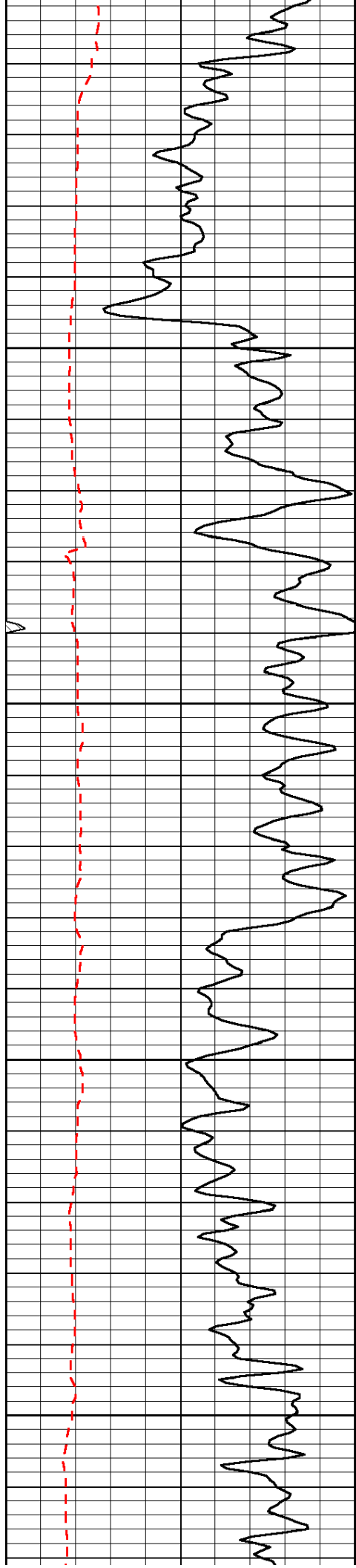
LSPD

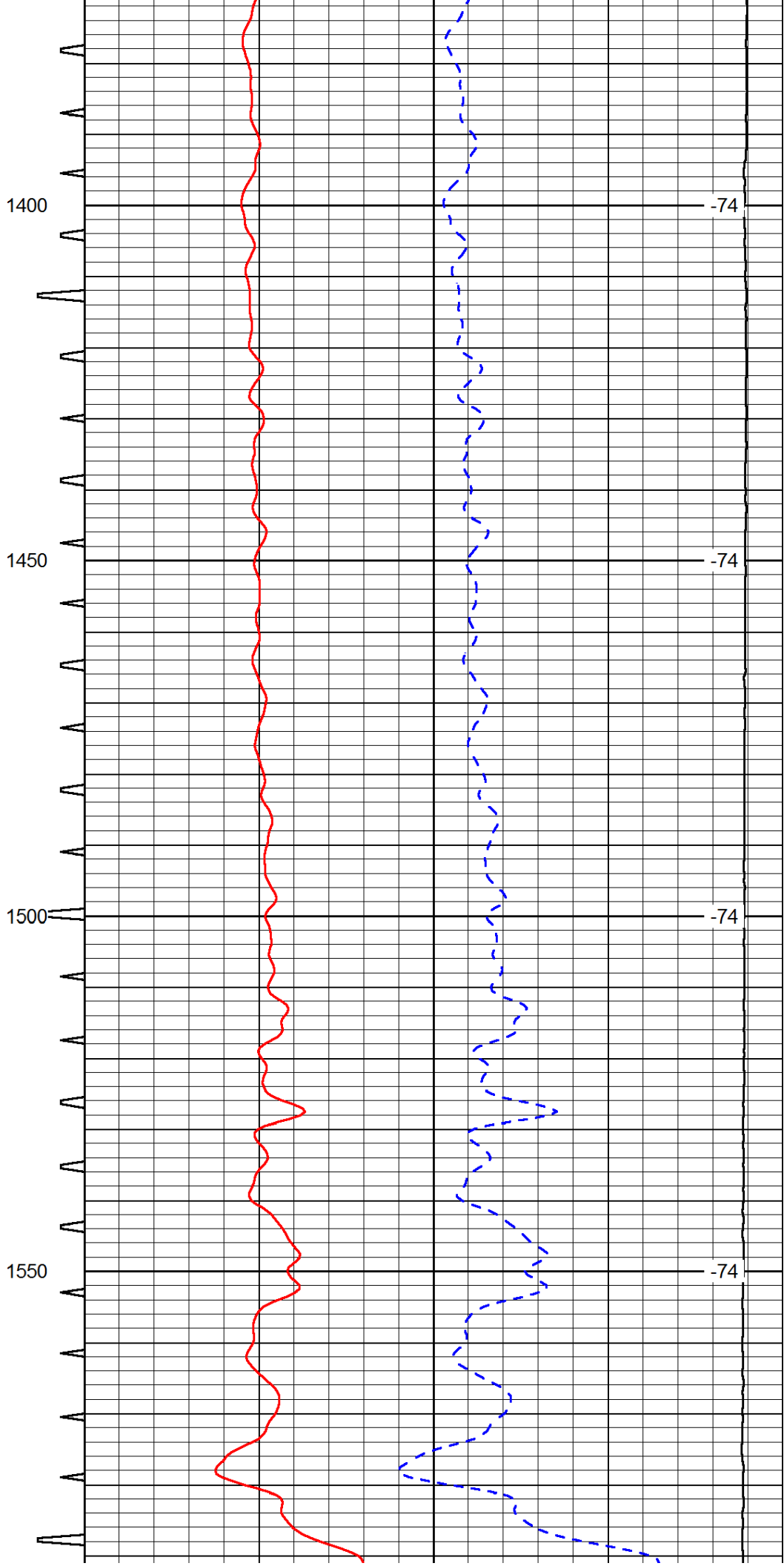
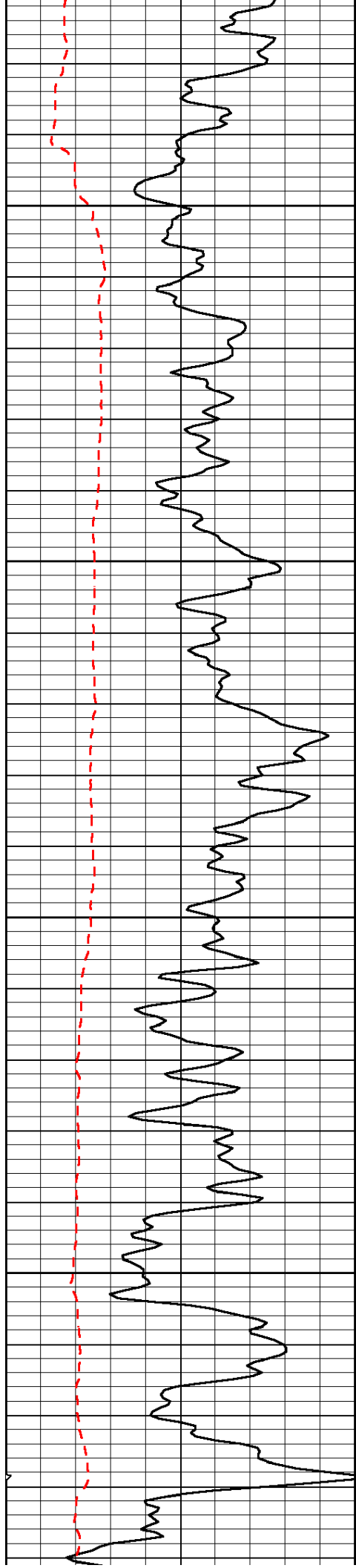






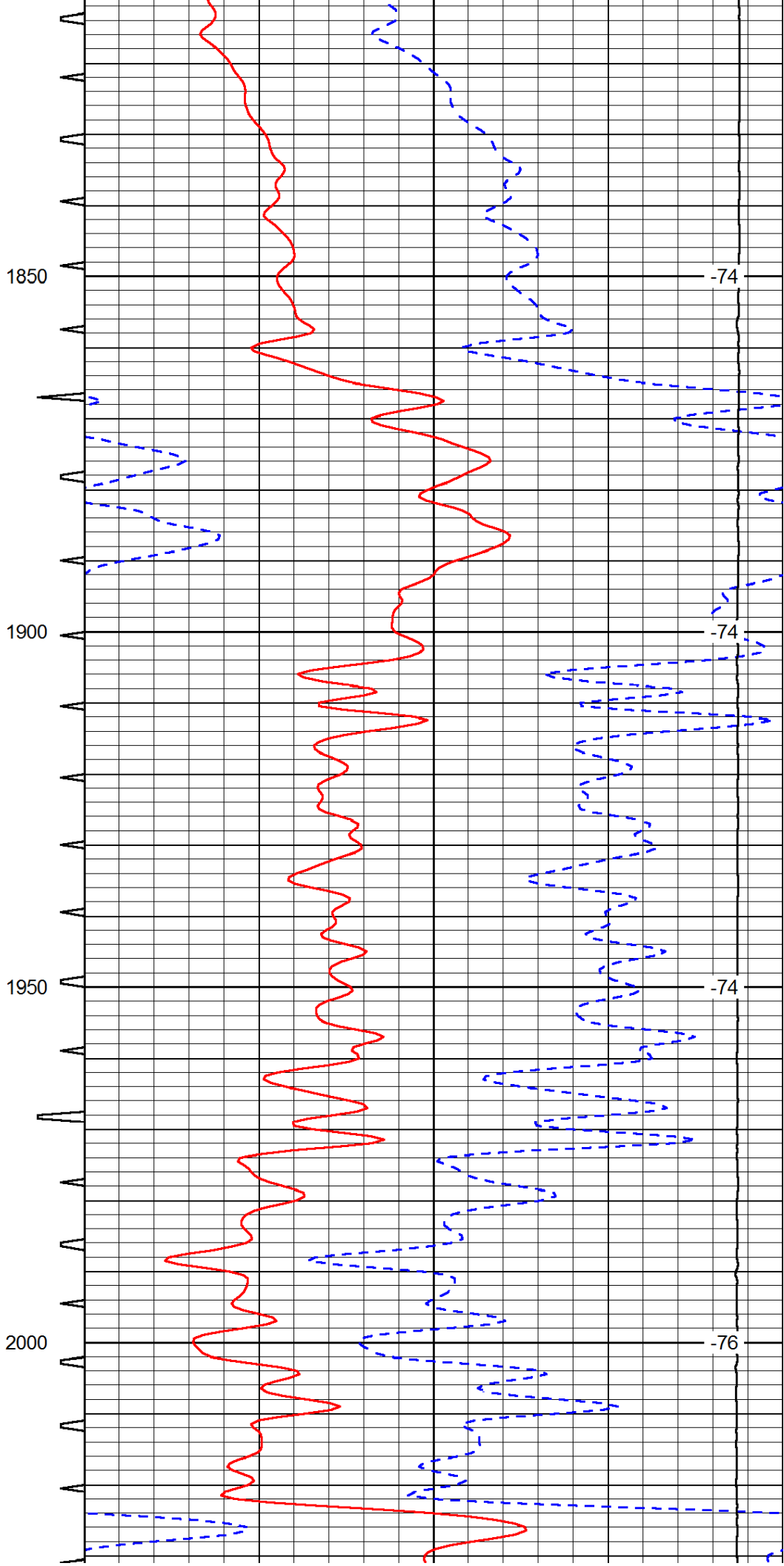
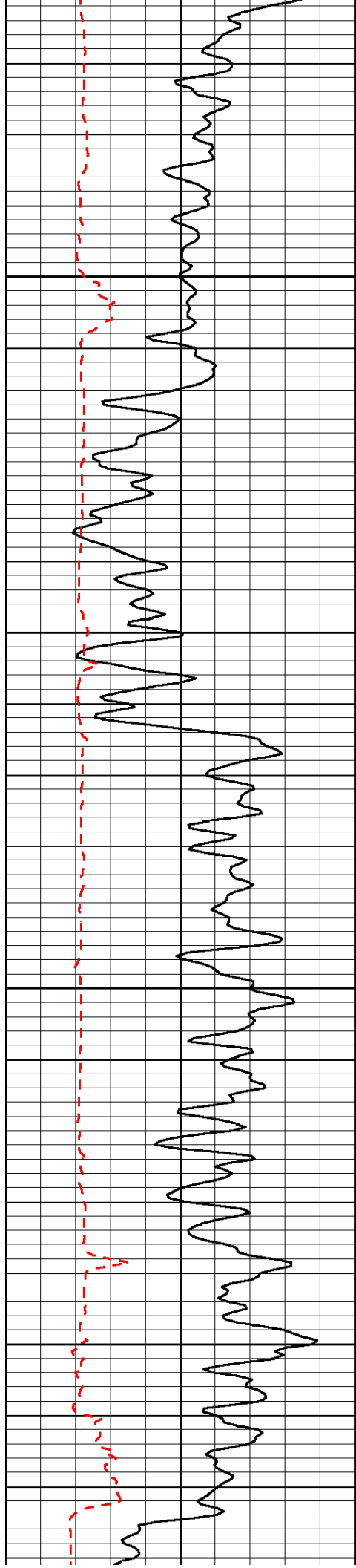


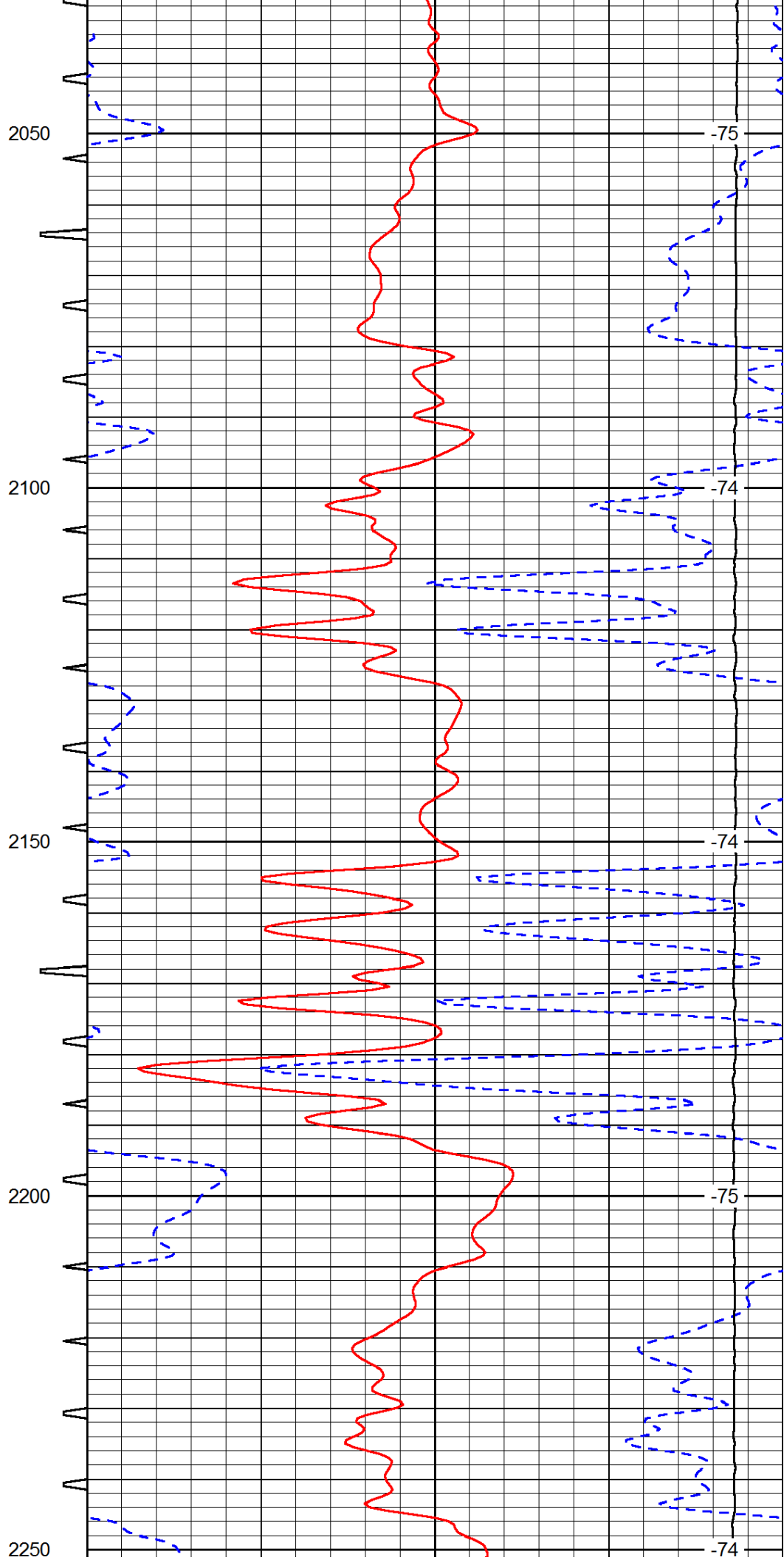
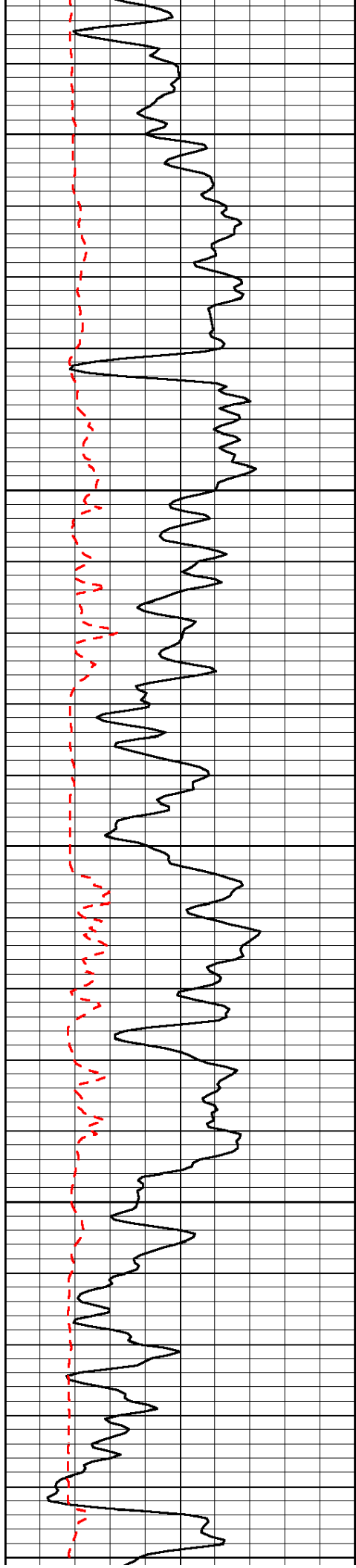


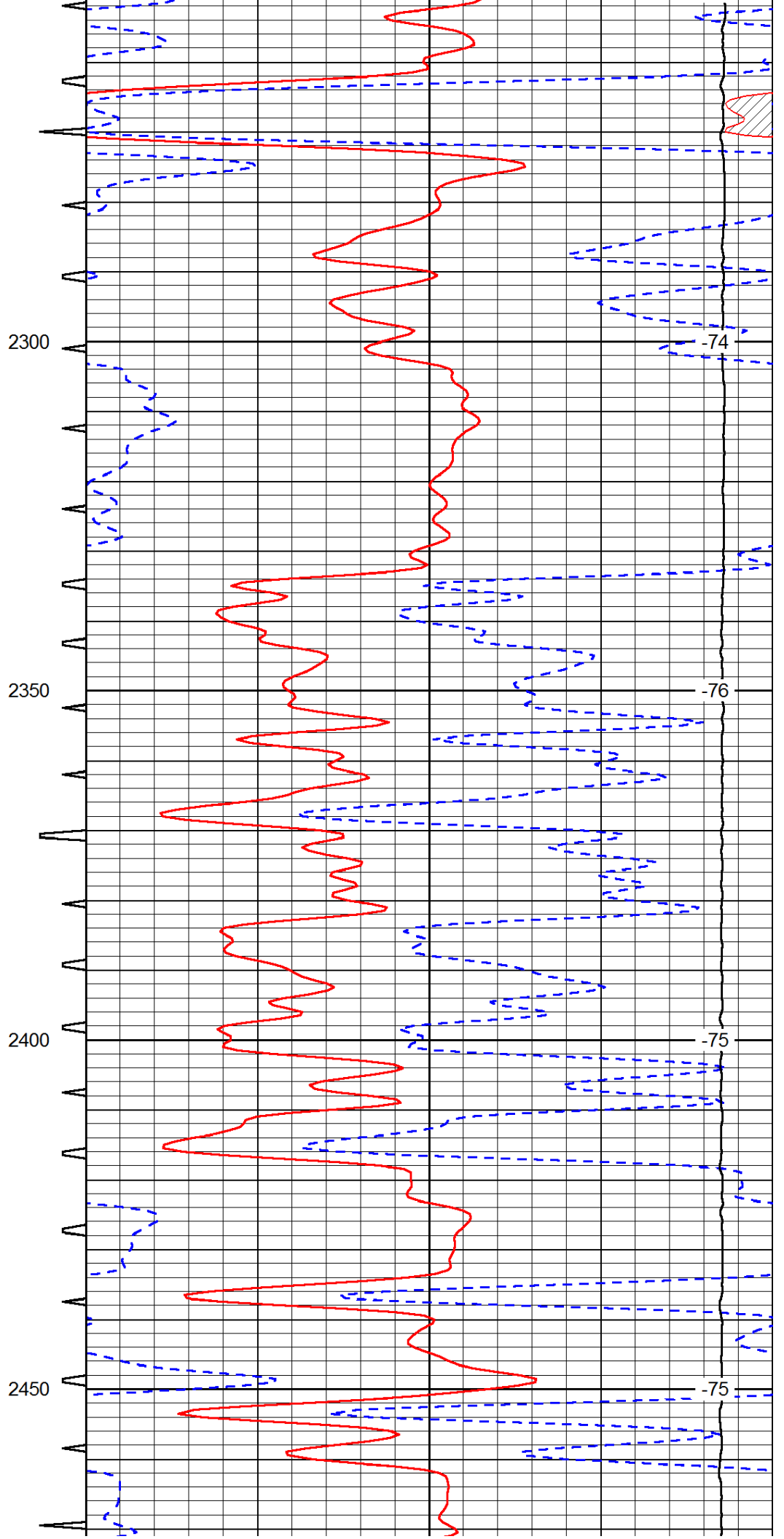
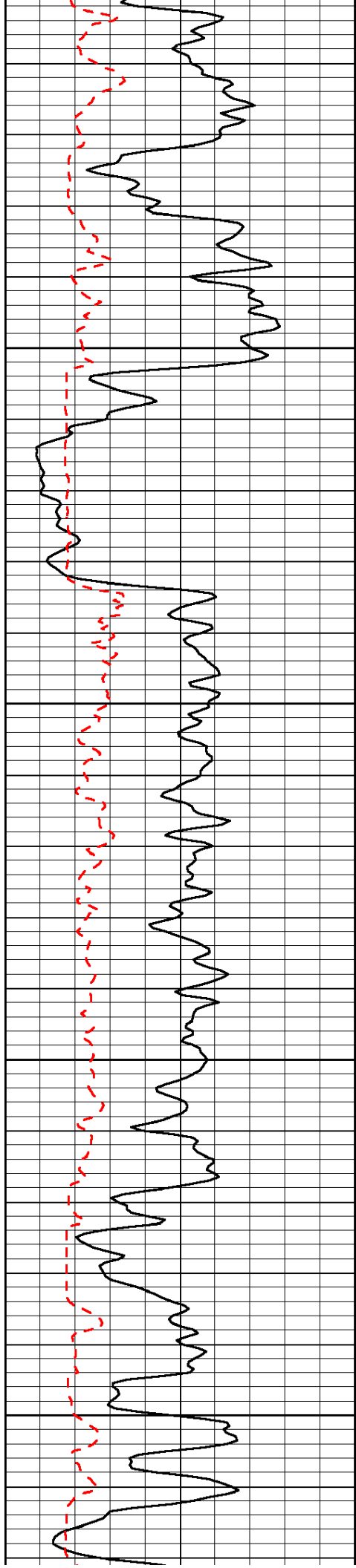


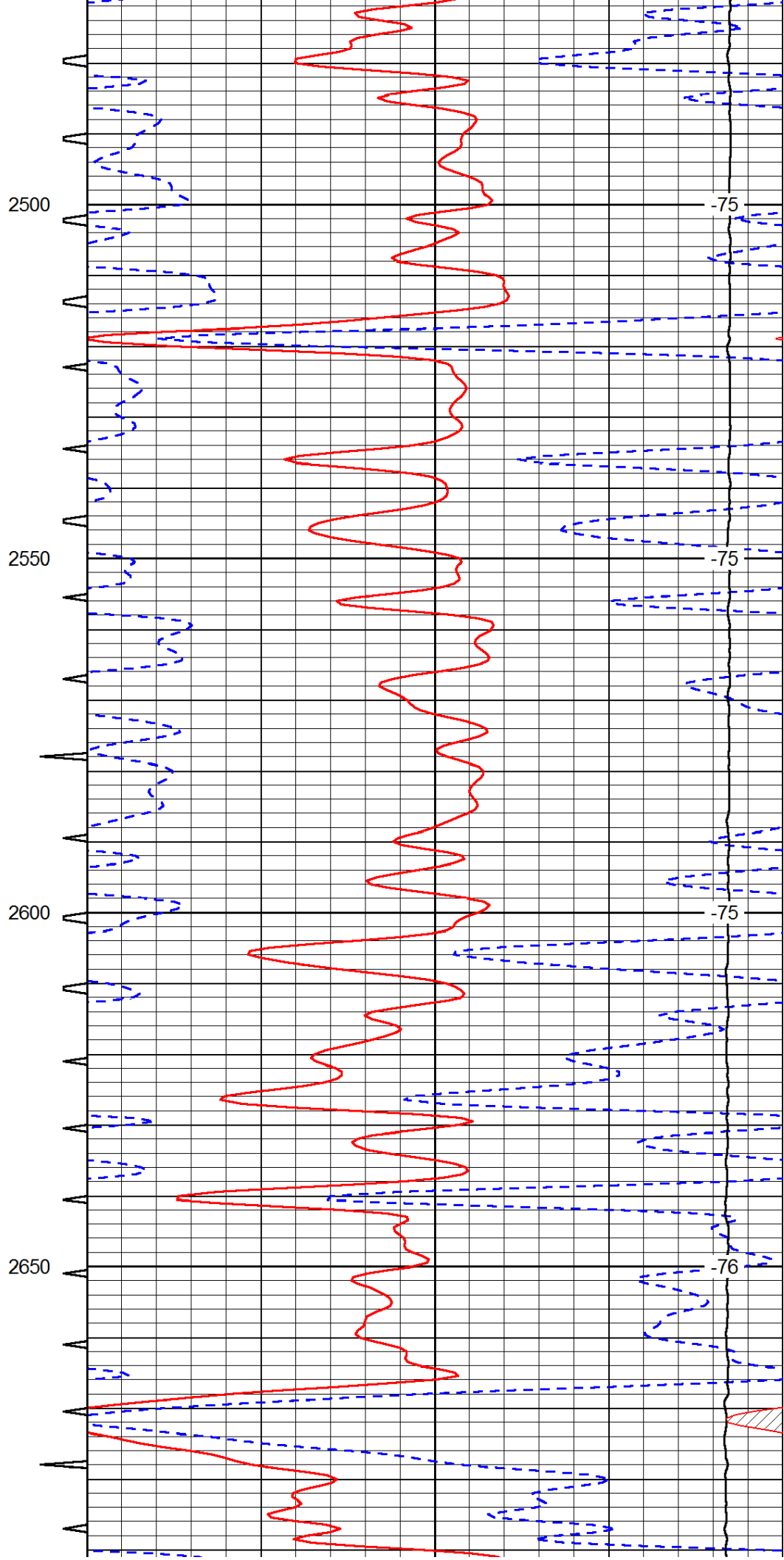
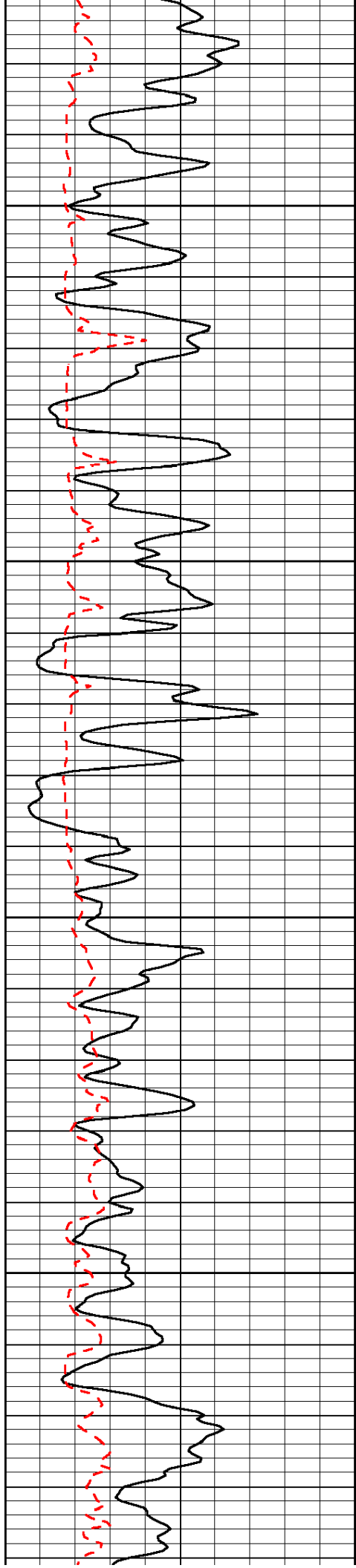


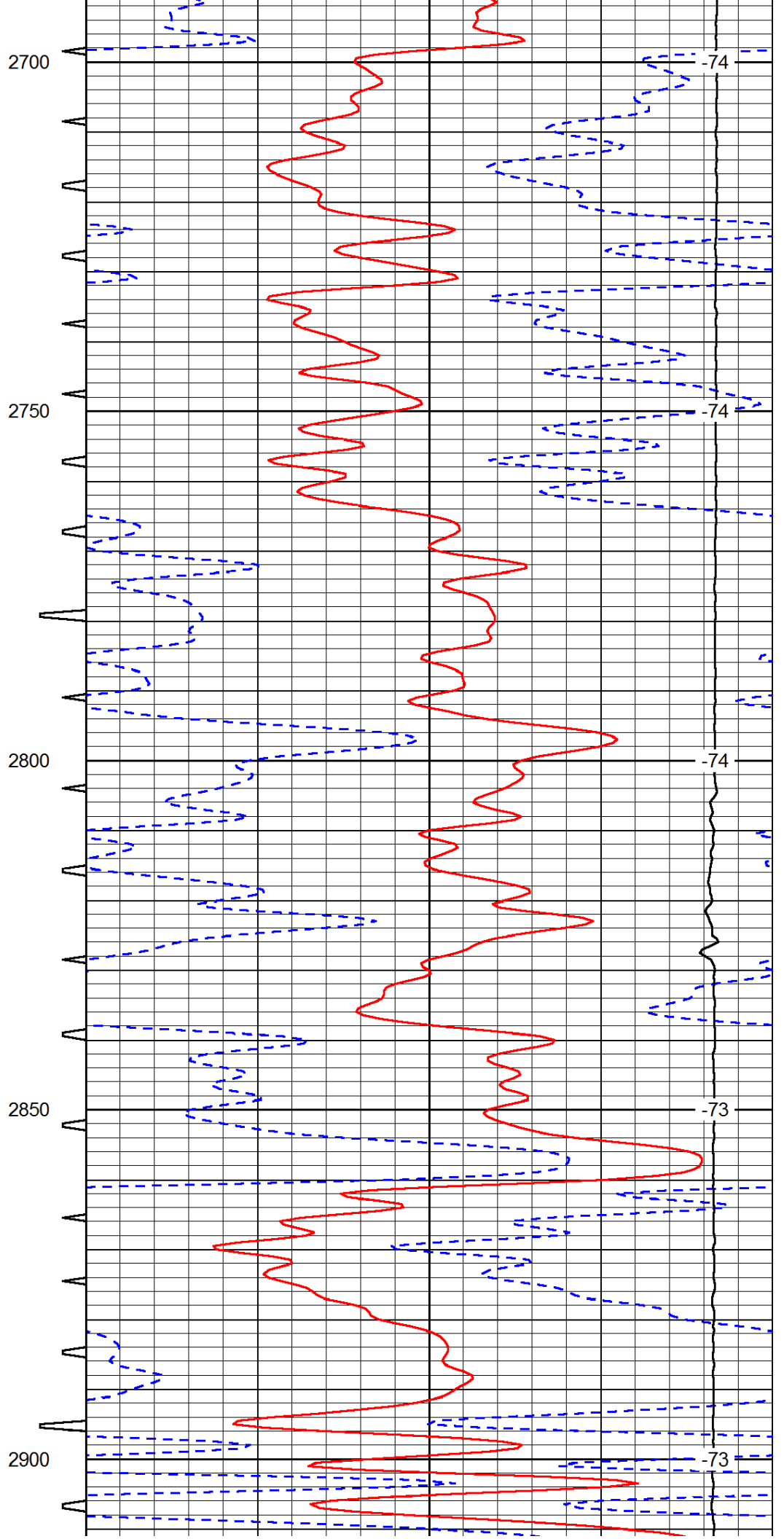
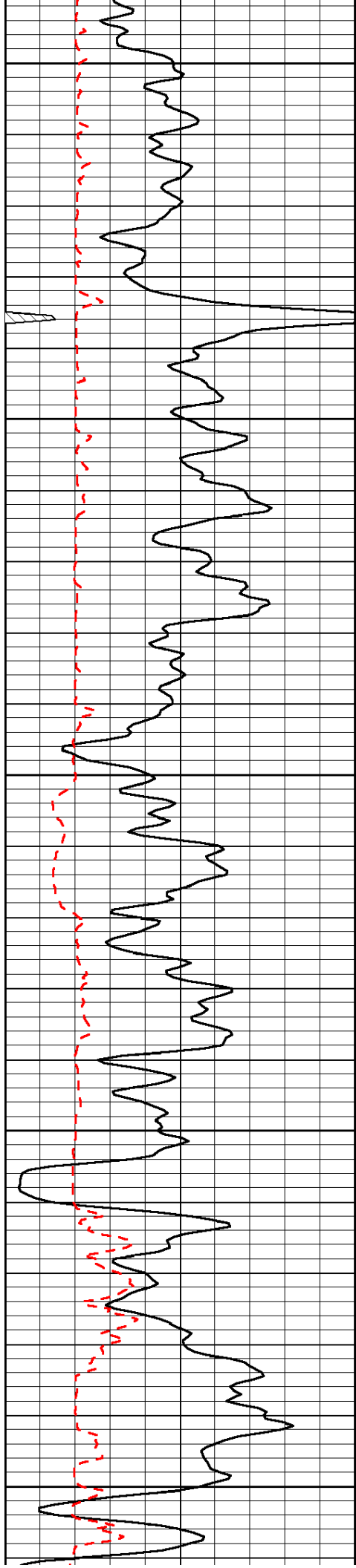


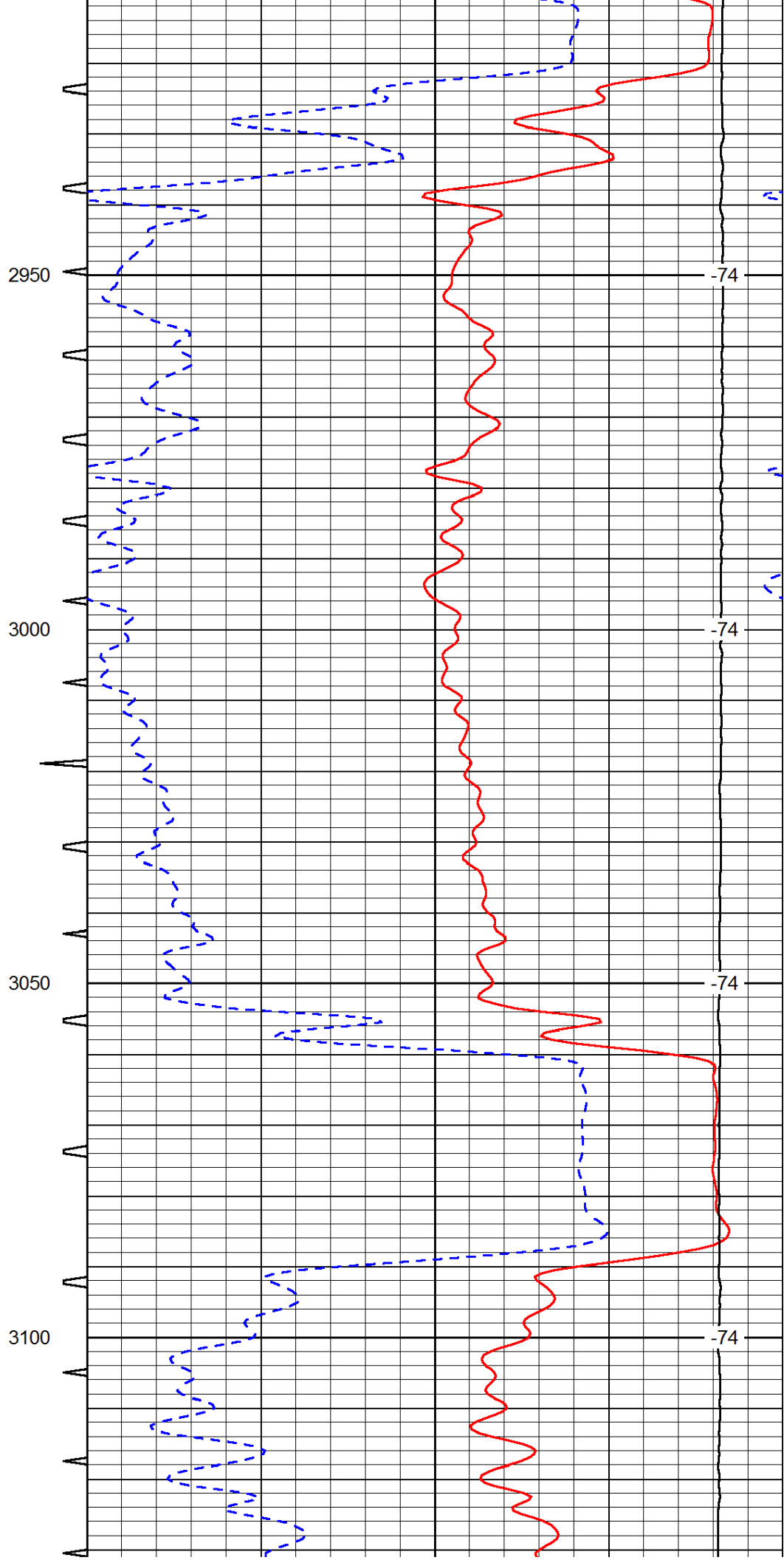
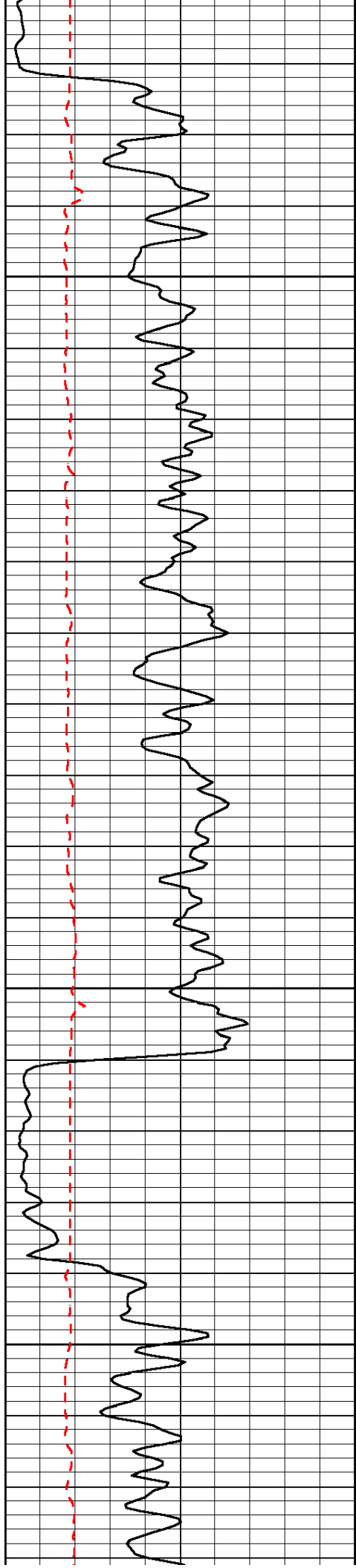


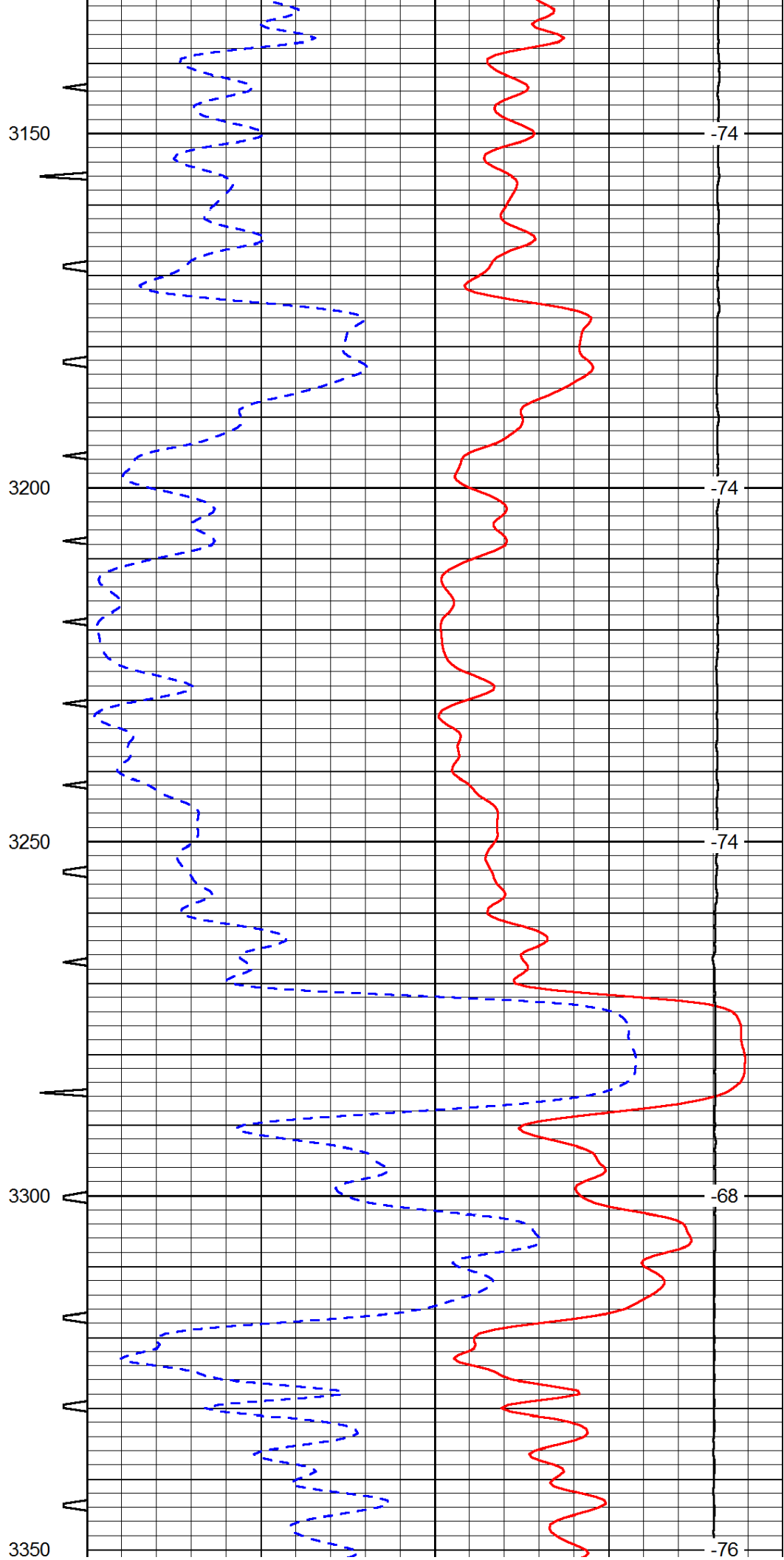
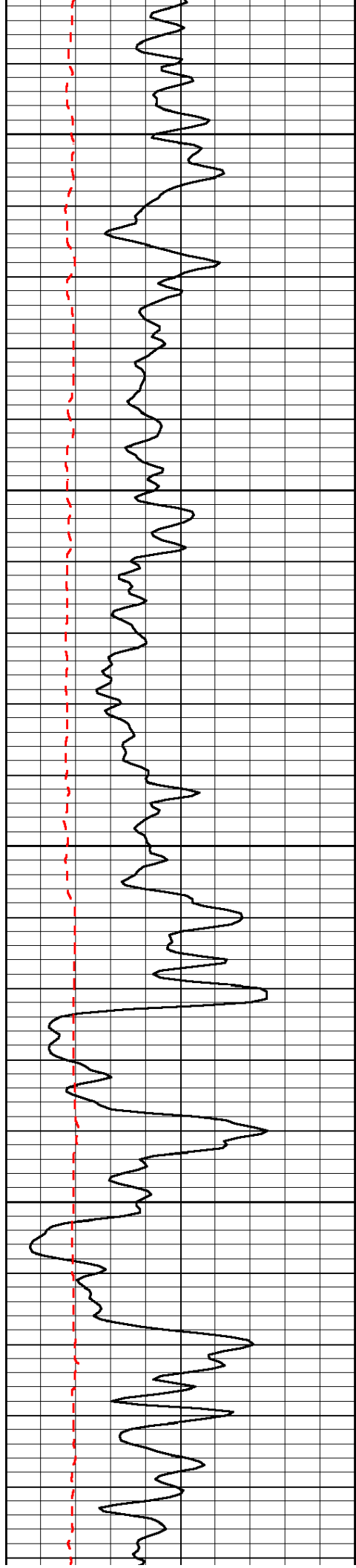


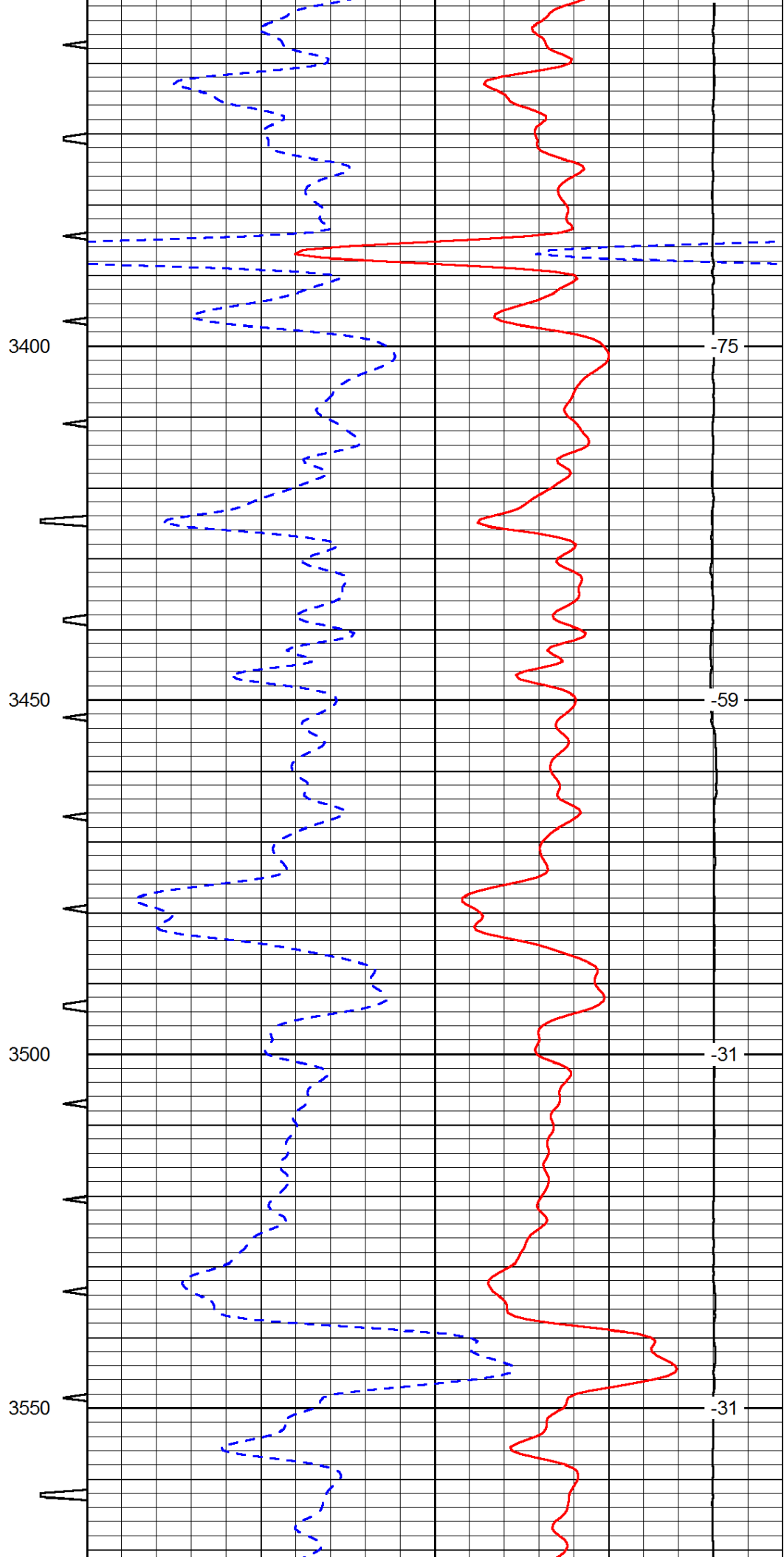
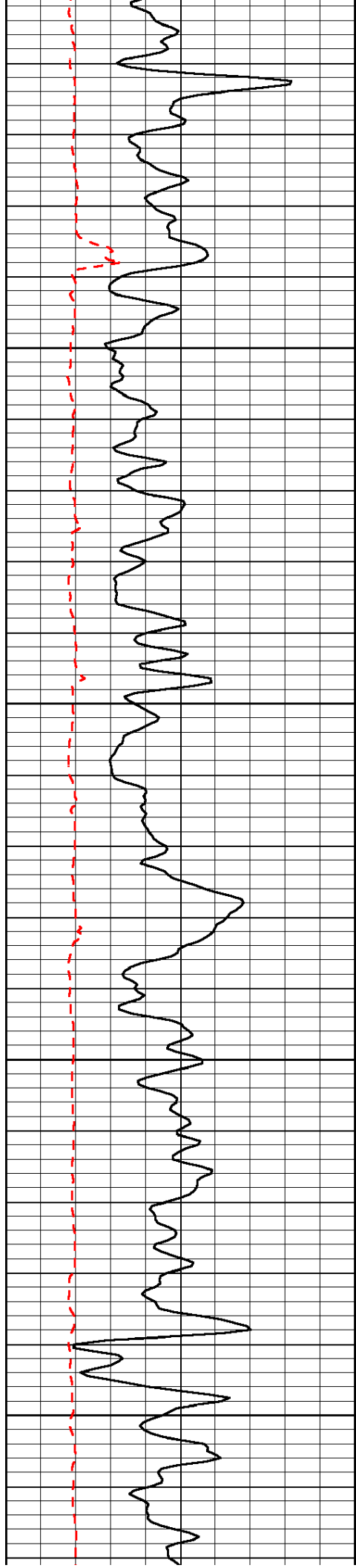




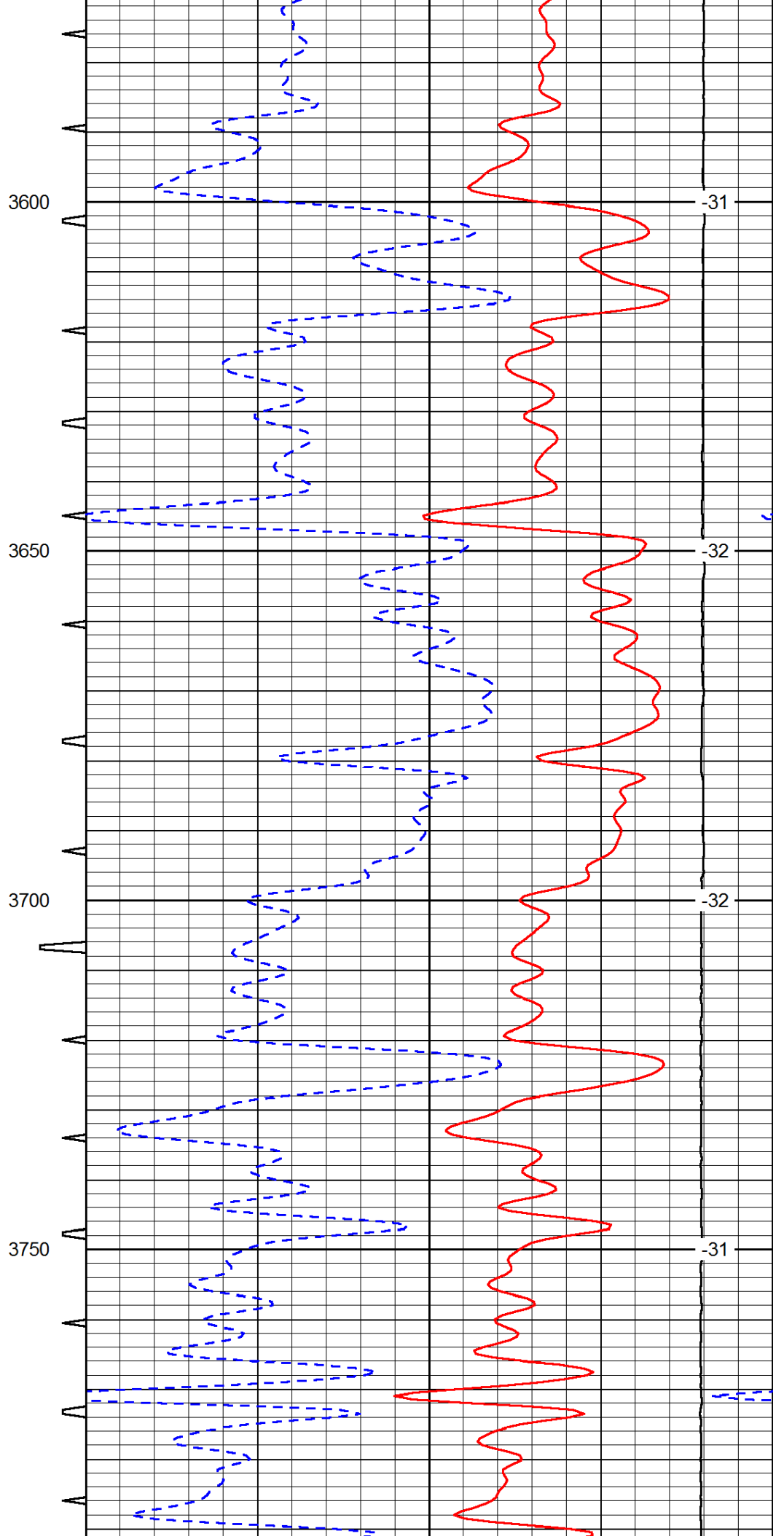
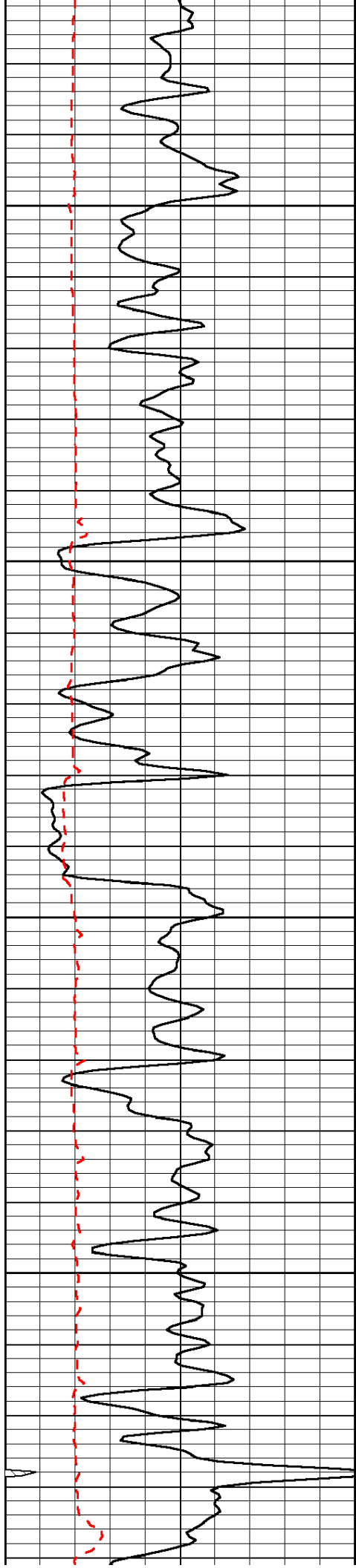


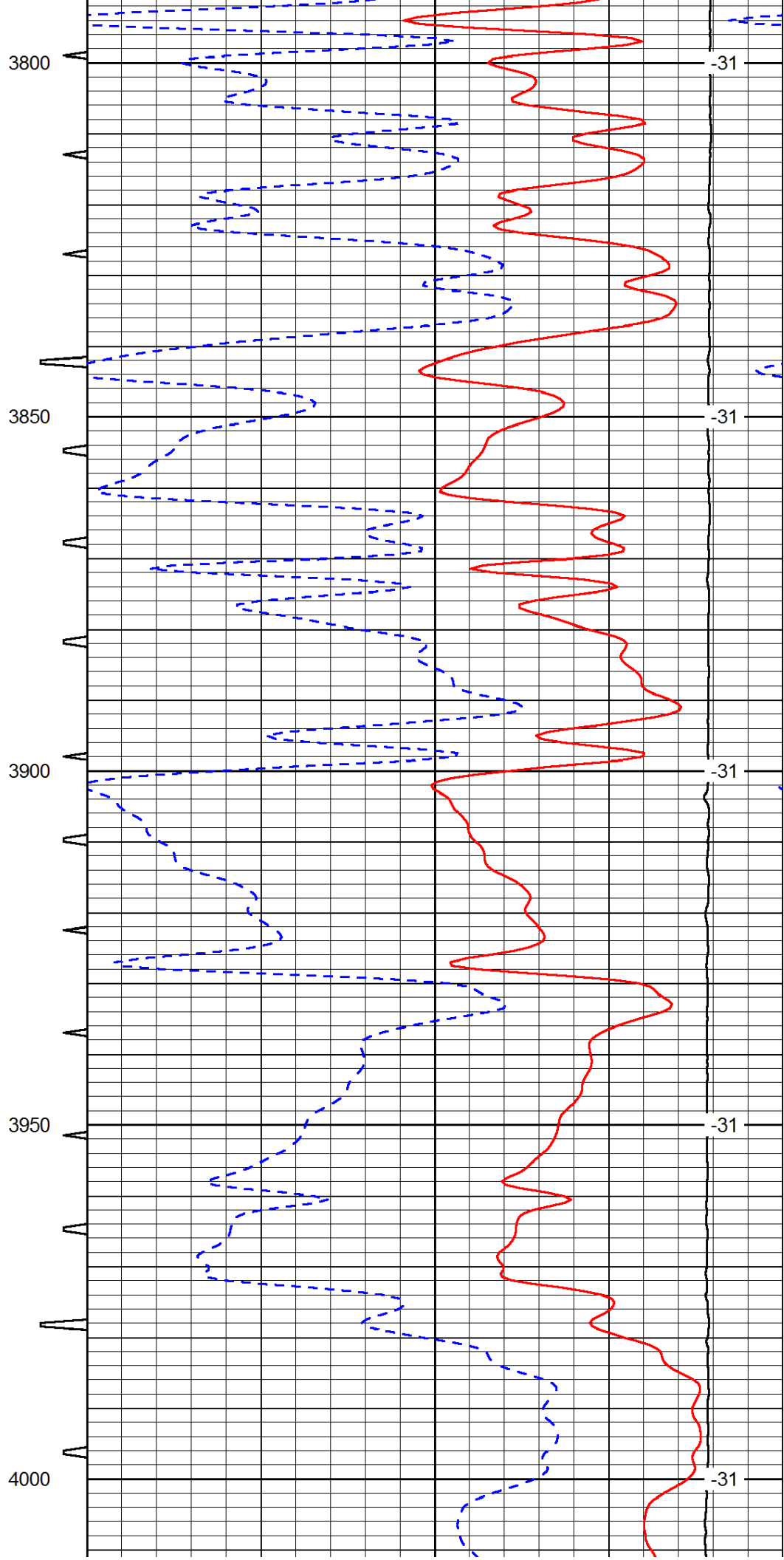
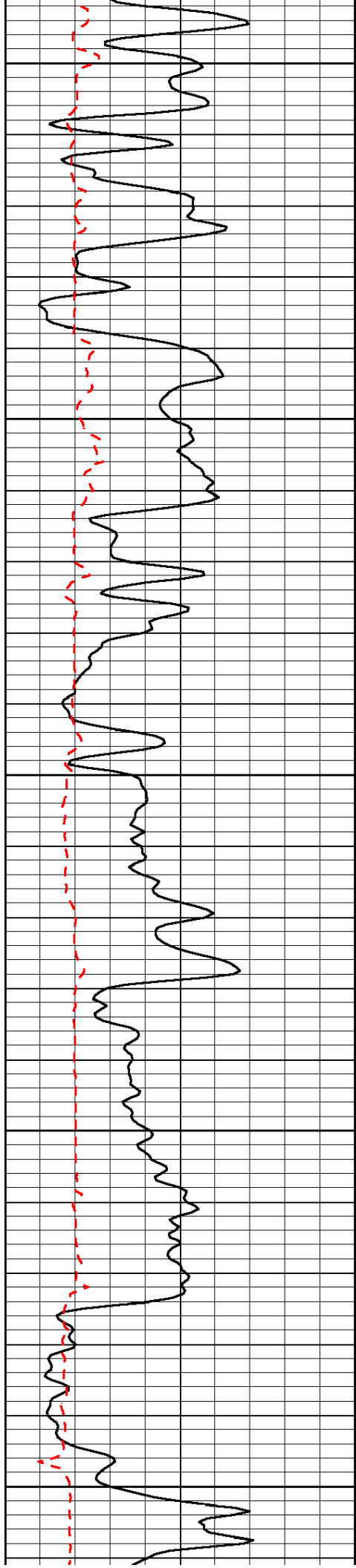


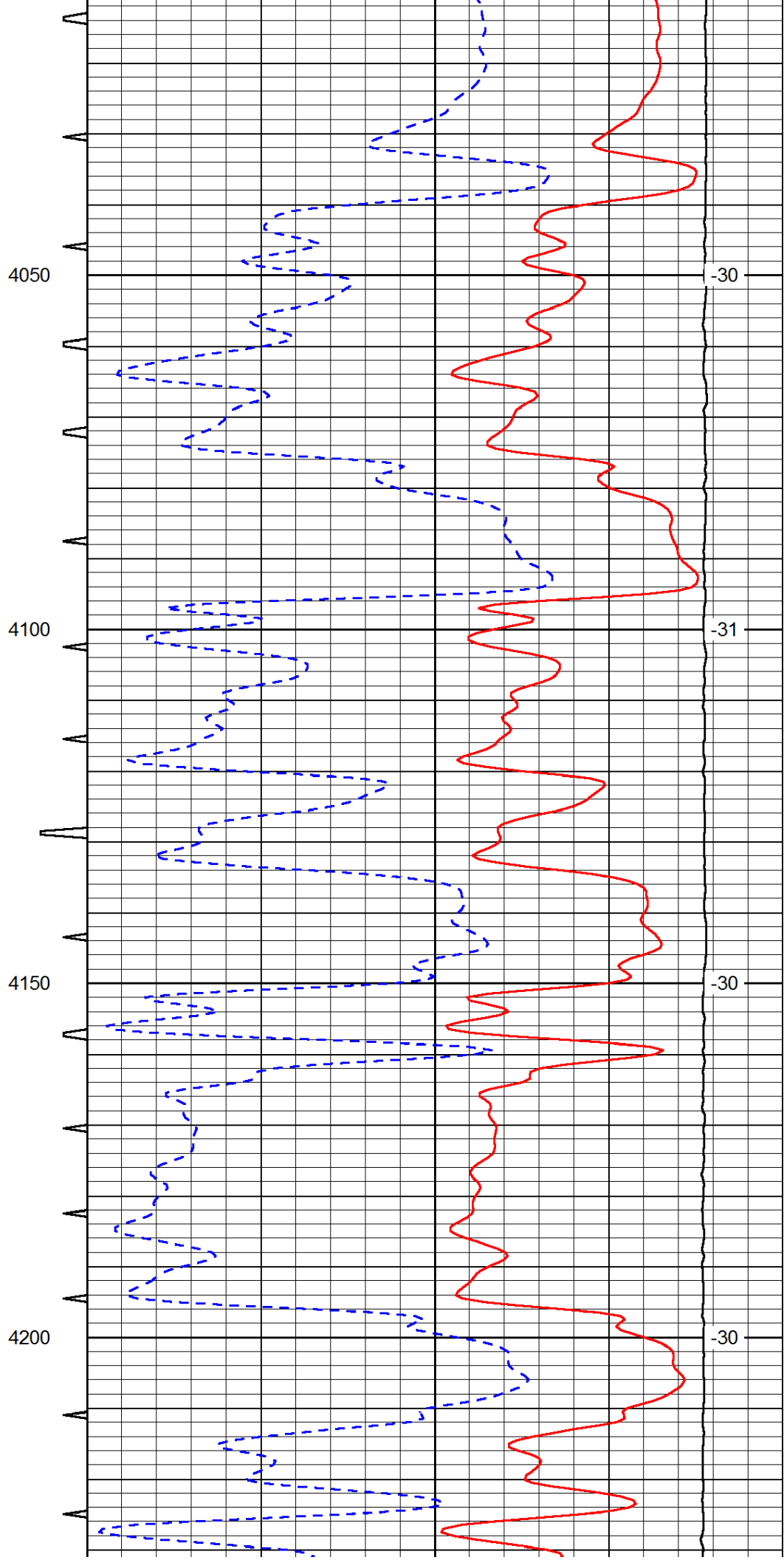
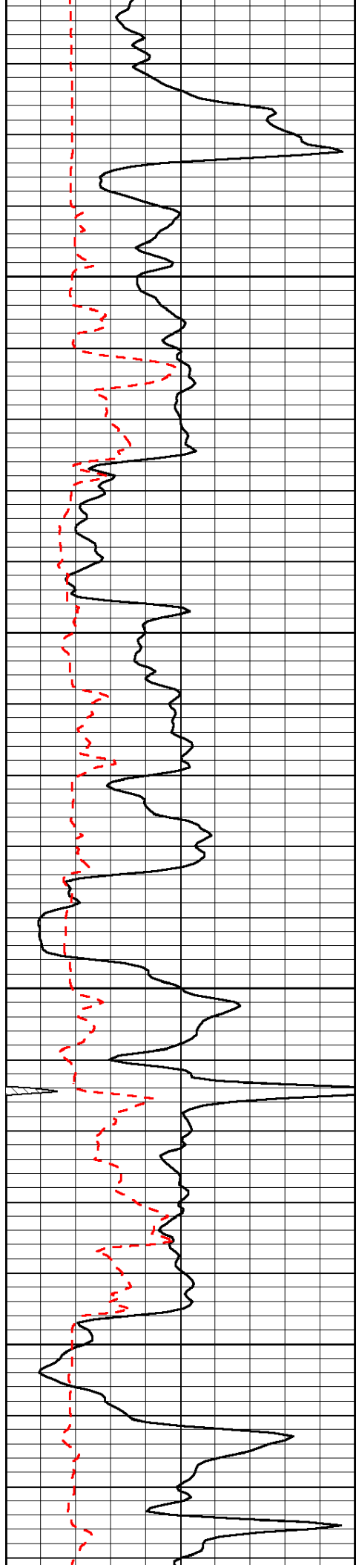


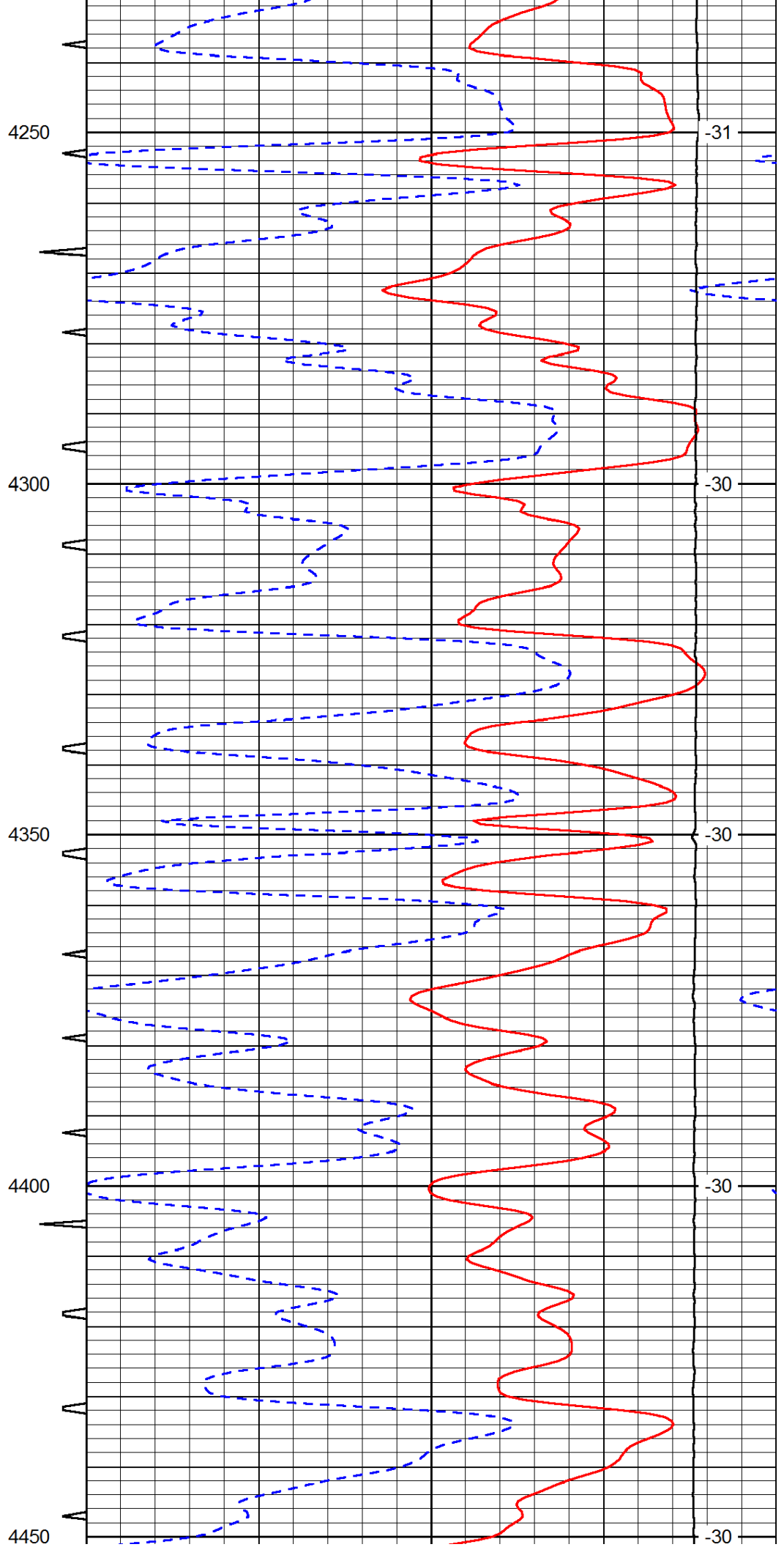
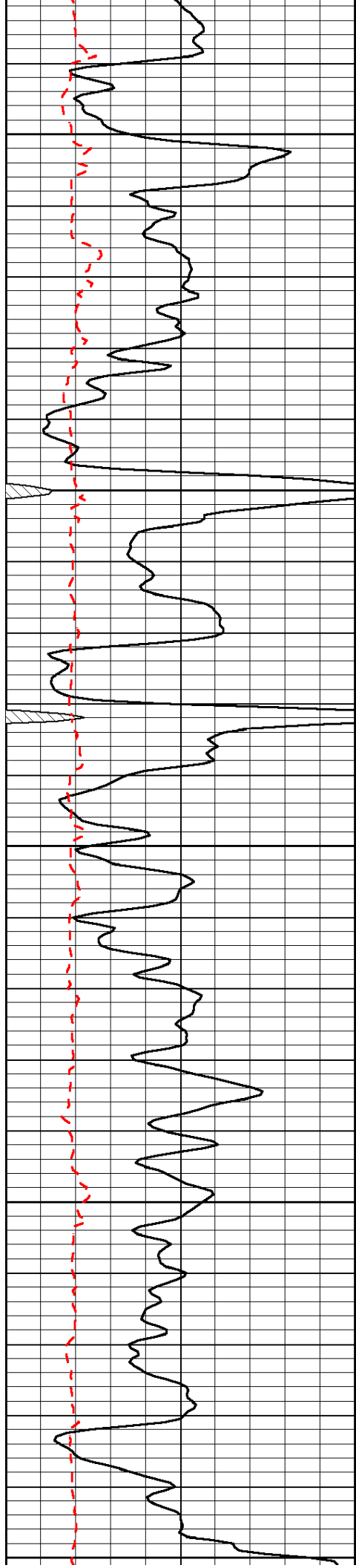


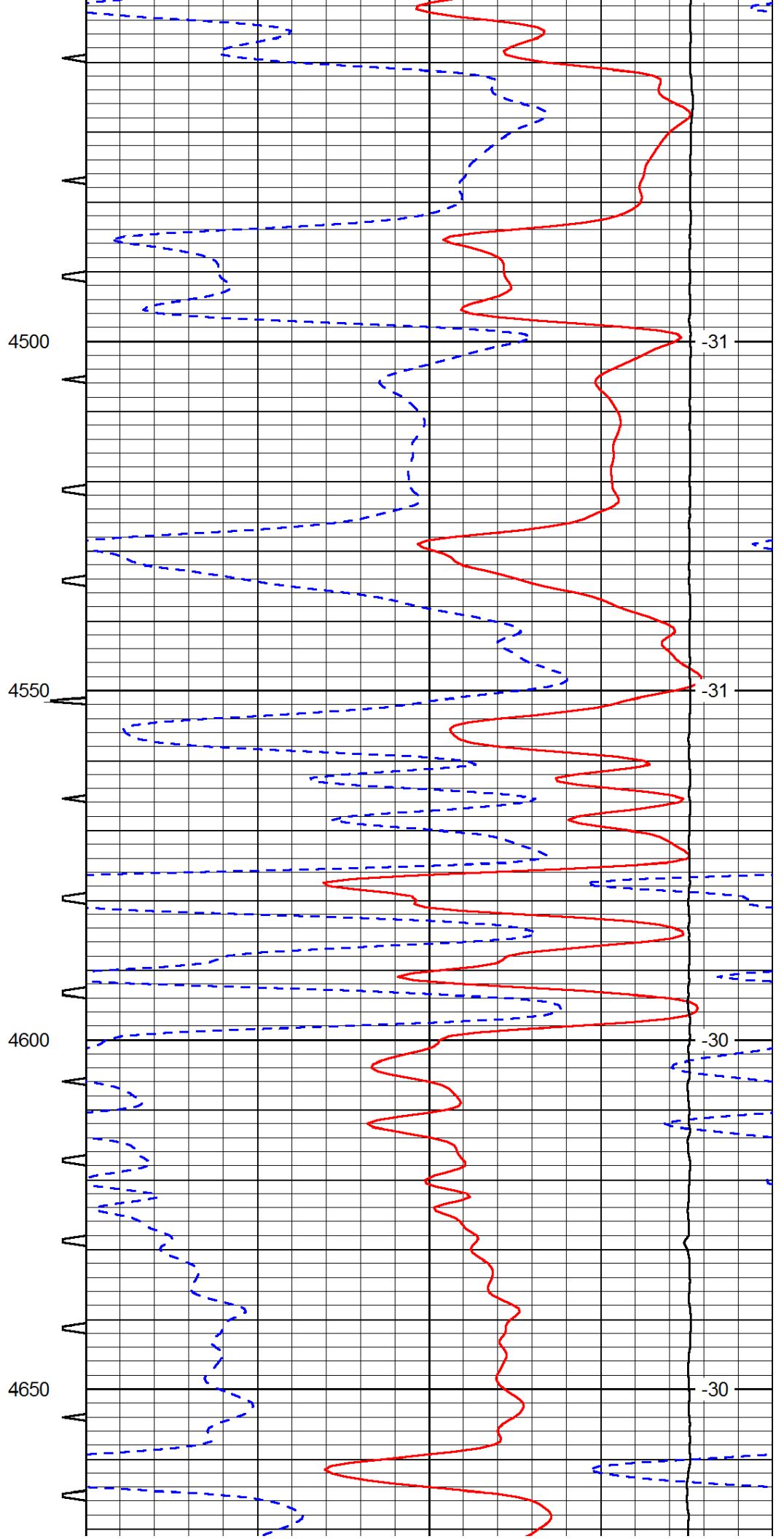
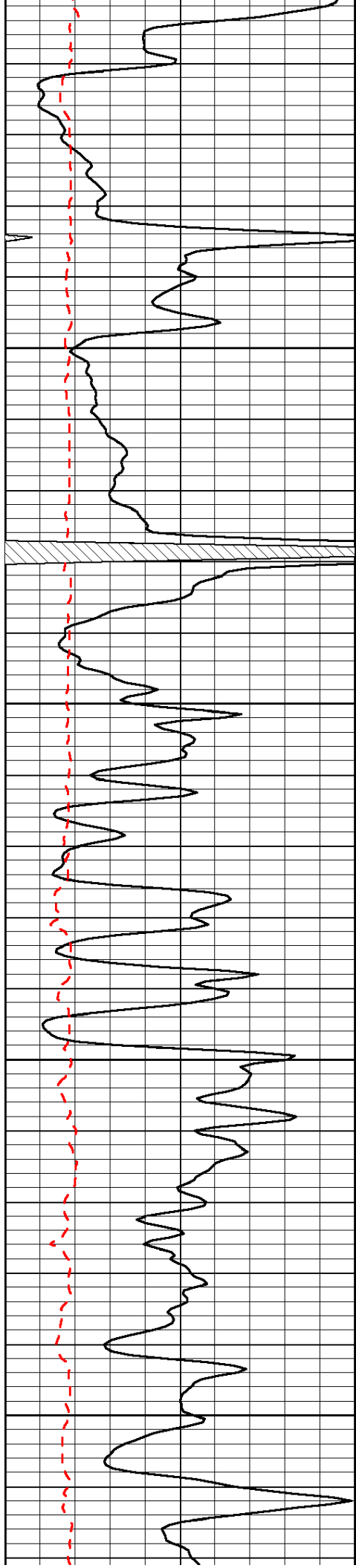


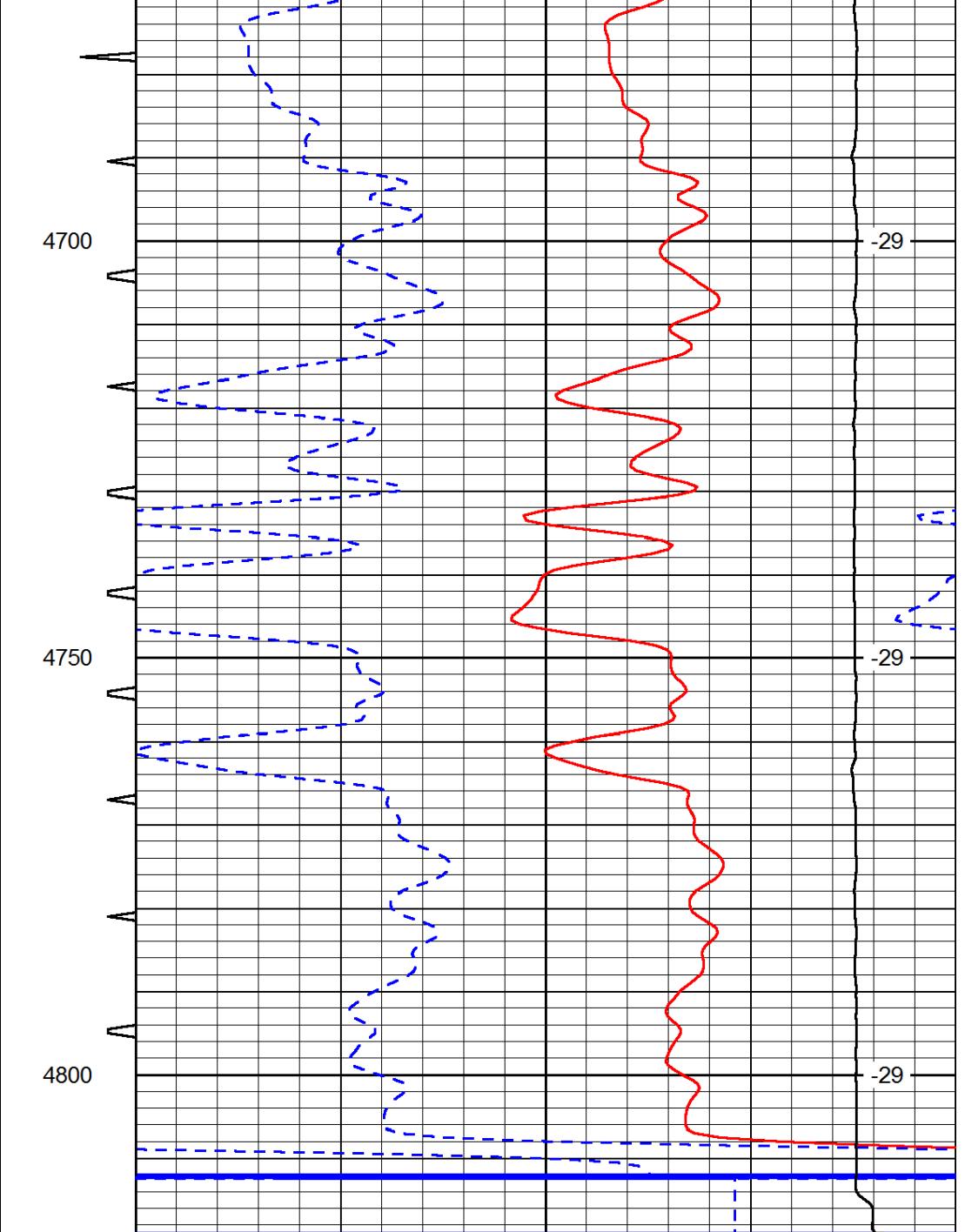
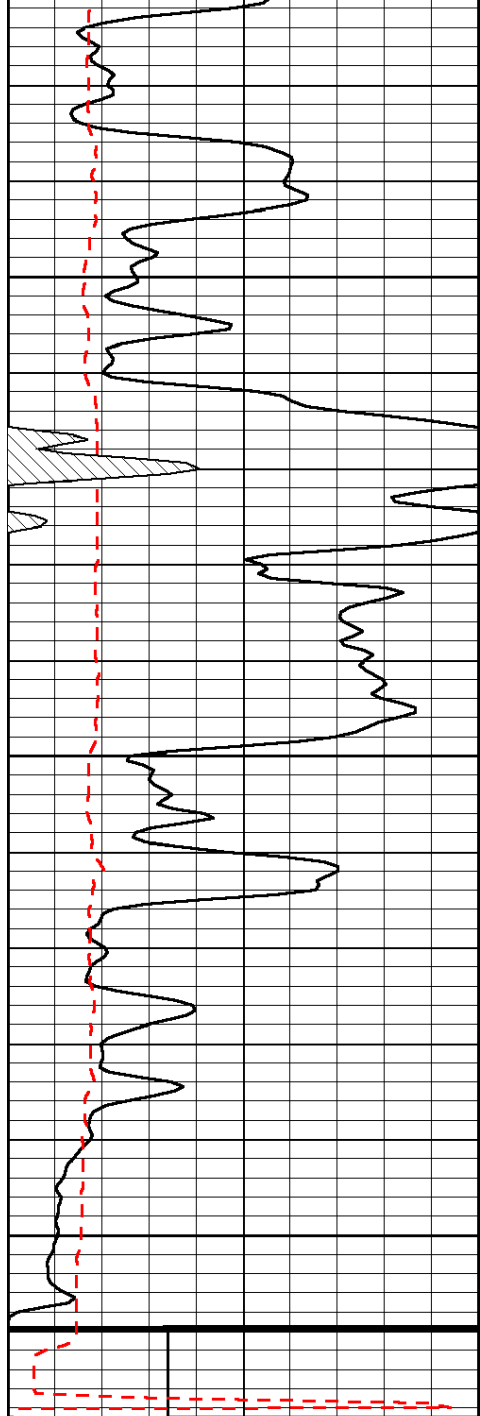












0	Gamma Ray	150	Sonic Int	140	Delta Time (usec/ft)	40
150	Gamma Ray	300	5	0	SPOR	-10
6	scal (GAPI)	16		15000	LTEN (lb)	0
LSPD						