



Pioneer Energy Services

Microresistivity Log

15-153-20,936-00-00

API No.

Company **Berexco, LLC**
 Well **Michael #1-22**
 Field **Wildcat**
 County **Rawlins** State **Kansas**

Location **2200' FNL & 880' FEL**

Sec: **22** Twp: **1S** Rge: **36W**

Permanent Datum **Ground Level** Elevation **3147**
 Log Measured From **Kelly Bushing** **11** Ft. Above Perm. Datum
 Drilling Measured From **Kelly Bushing**

Other Services
 RAG/BHCS
 Elevation
 K.B. 3158
 D.F. 3147
 G.L. 3147

Date	8/23/2013
Run Number	Two
Depth Driller	4810
Depth Logger	4814
Bottom Logged Interval	4813
Top Log Interval	3500
Casing Driller	8.625 @ 315
Casing Logger	305
Bit Size	7.875
Type Fluid in Hole	Chemical
Salinity,ppm CL	2,800
Density / Viscosity	9.1 134
pH / Fluid Loss	11.5 6.0
Source of Sample	Flowline
Rm @ Meas. Temp	.75 @ 73
Rmf @ Meas. Temp	.56 @ 73
Rmc @ Meas. Temp	1.01 @ 73
Source of Rmf / Rmc	Charts
Rm @ BHT	.44 @ 124
Operating Rig Time	5 Hours
Max Rec. Temp. F	124
Equipment Number	17
Location	Hays
Recorded By	C. Desai
Witnessed By	Bryan Bynog

<<< Fold Here >>>

All interpretations are opinions based on inferences from electrical or other measurements and we cannot and do not guarantee the accuracy or correctness of any interpretation, and we shall not, except in the case of gross or willful negligence on our part, be liable or responsible for any loss, costs, damages, or expenses incurred or sustained by anyone resulting from any interpretation made by any of our officers, agents or employees. These interpretations are also subject to our general terms and conditions set out in our current Price Schedule.

Comments

Thank you for using Pioneer Energy Services
www.pioneerenergy.com
 785 625 3858

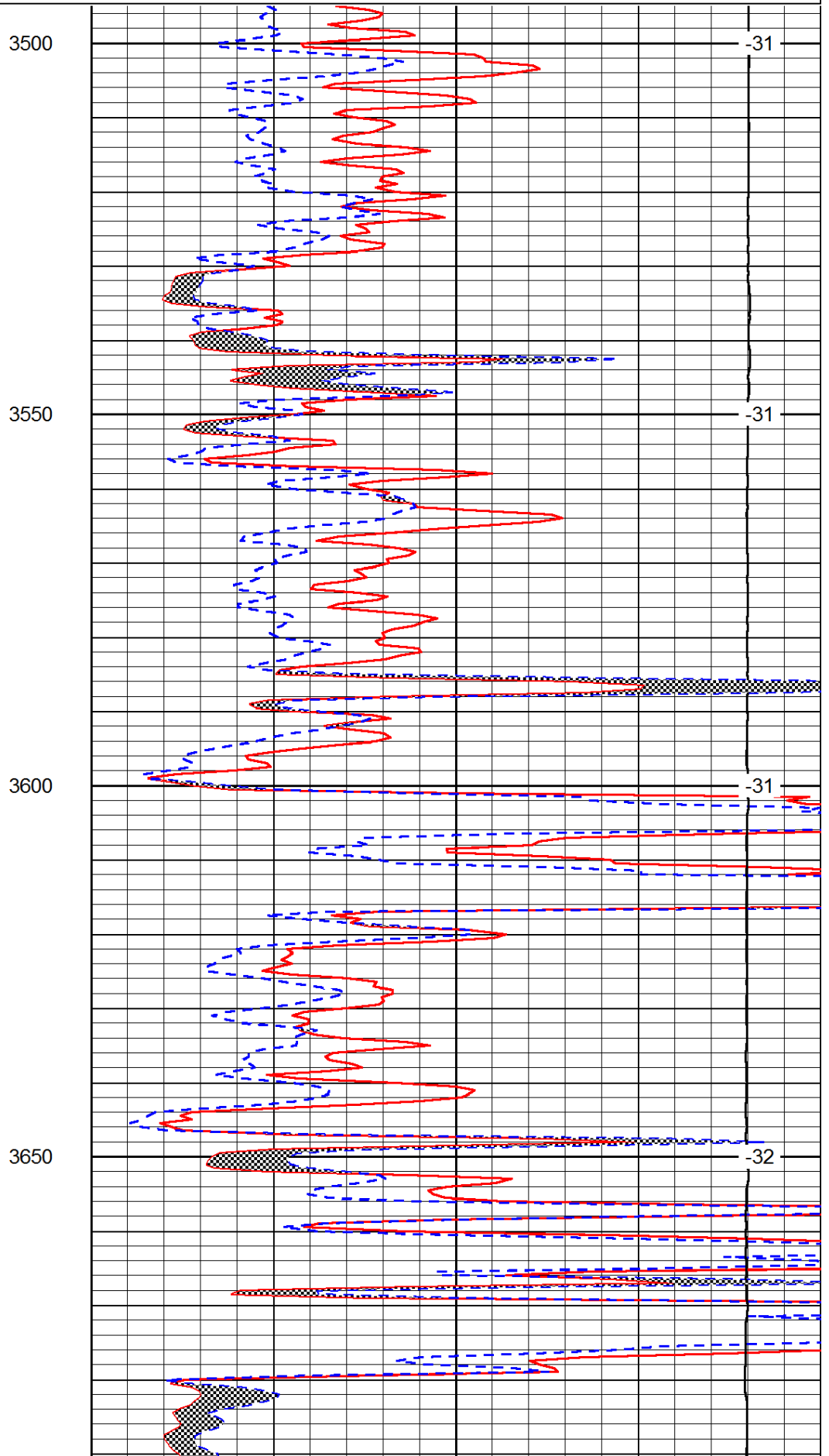
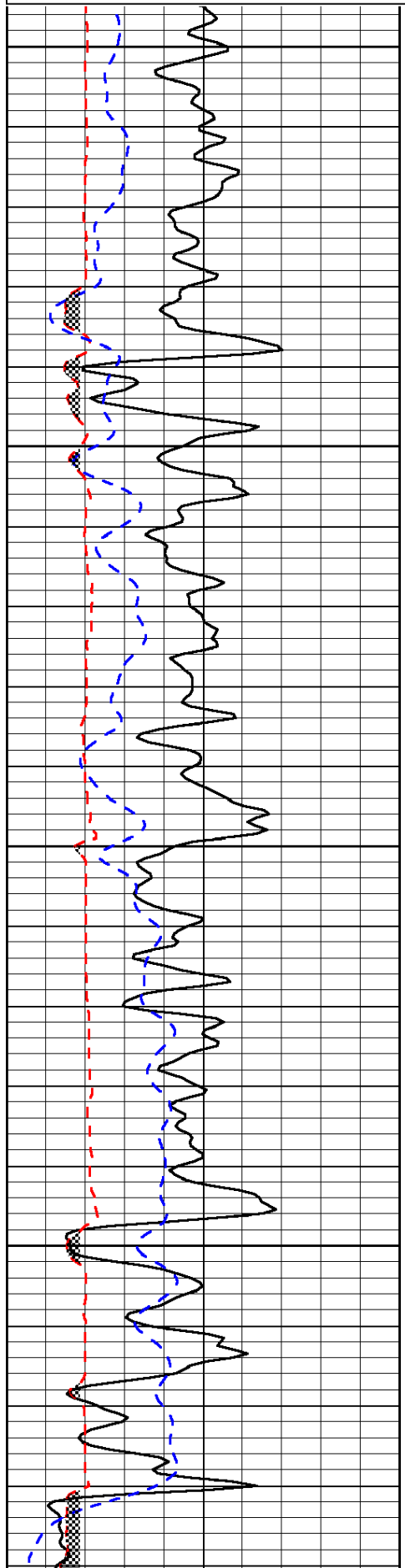
McDonald KS, 12 N to BB Rd, 1 1/2 E,
 N Into at farmstead for 1 mile

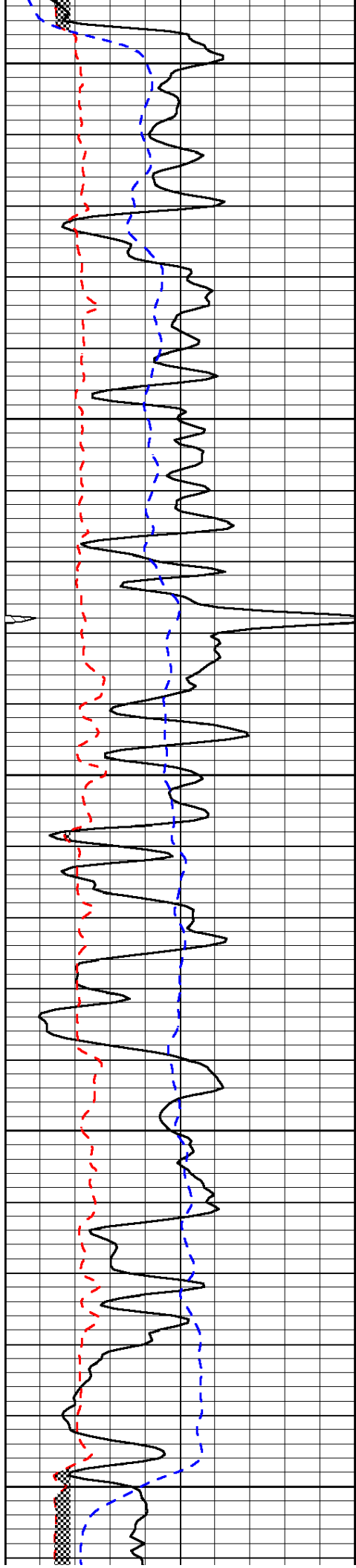
Database File: c:\warrior\data\berexco_michael #1-22\berhd1.db
 Dataset Pathname: rag1/berrag
 Presentation Format: micro
 Dataset Creation: Fri Aug 23 11:02:45 2013
 Charted by: Depth in Feet scaled 1:240

0	Gamma Ray	150
6	Micro Log Caliper (GAPI)	16
-200	SP (mV)	0

0	Micro Inverse 1 X 1	40
0	Micro Normal 2"	40
15000	Line Weight	0

LSPD





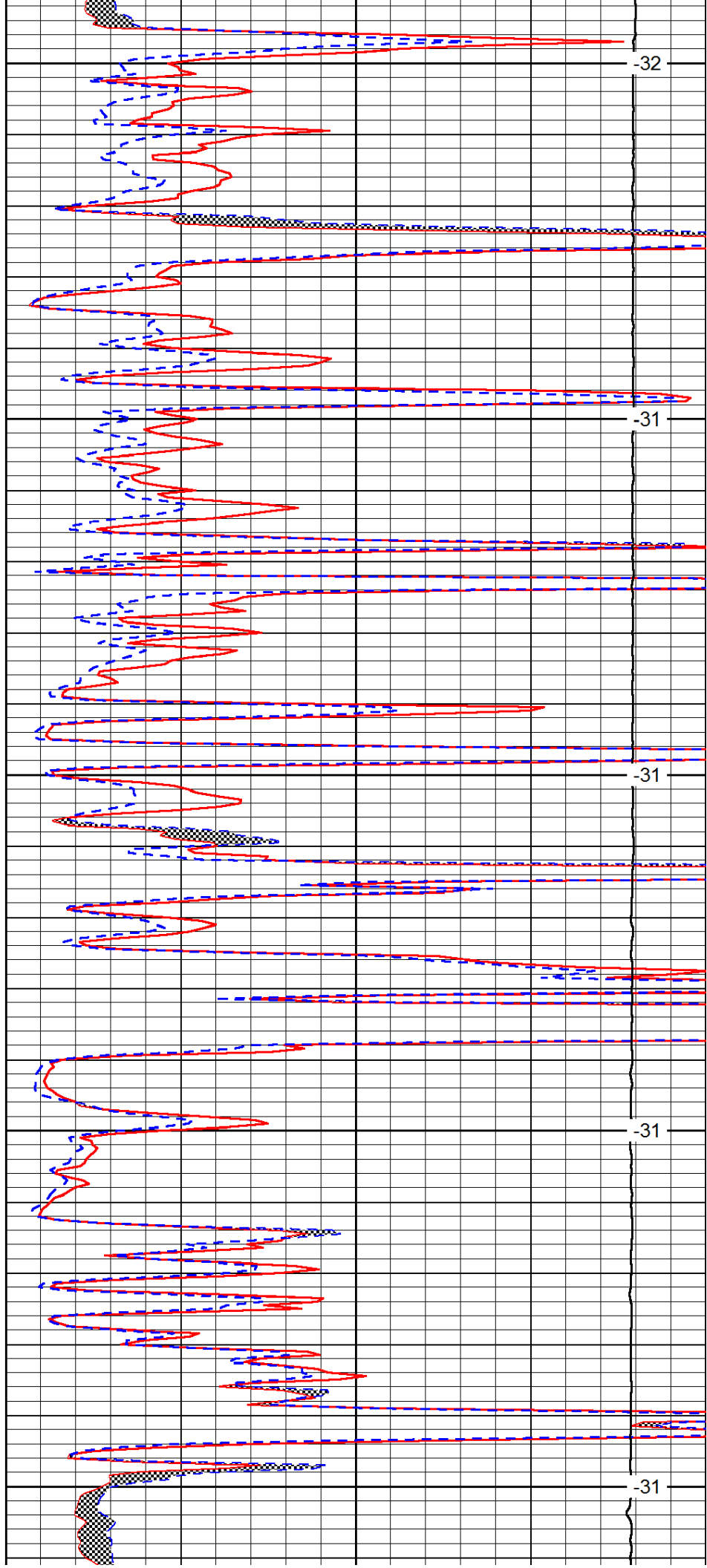
3700

3750

3800

3850

3900



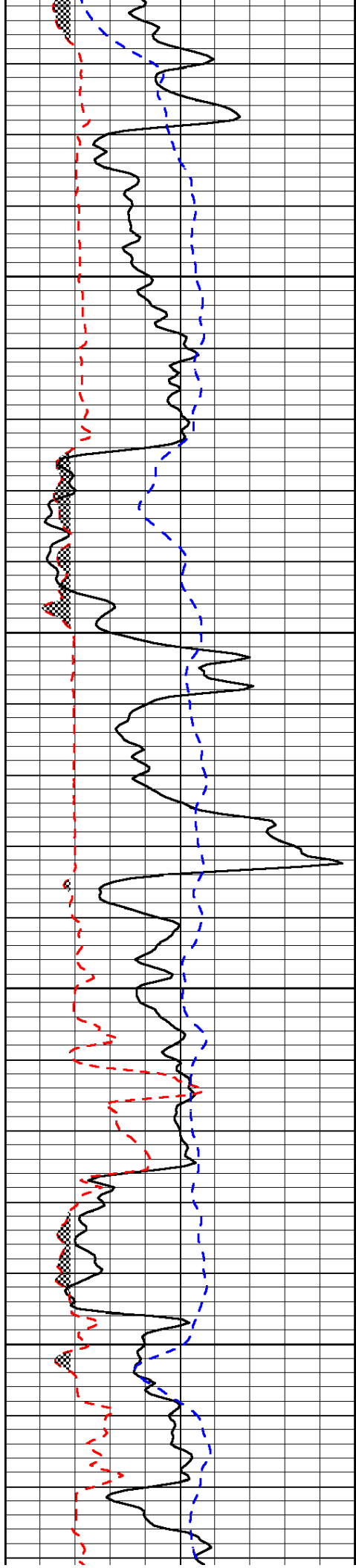
-32

-31

-31

-31

-31

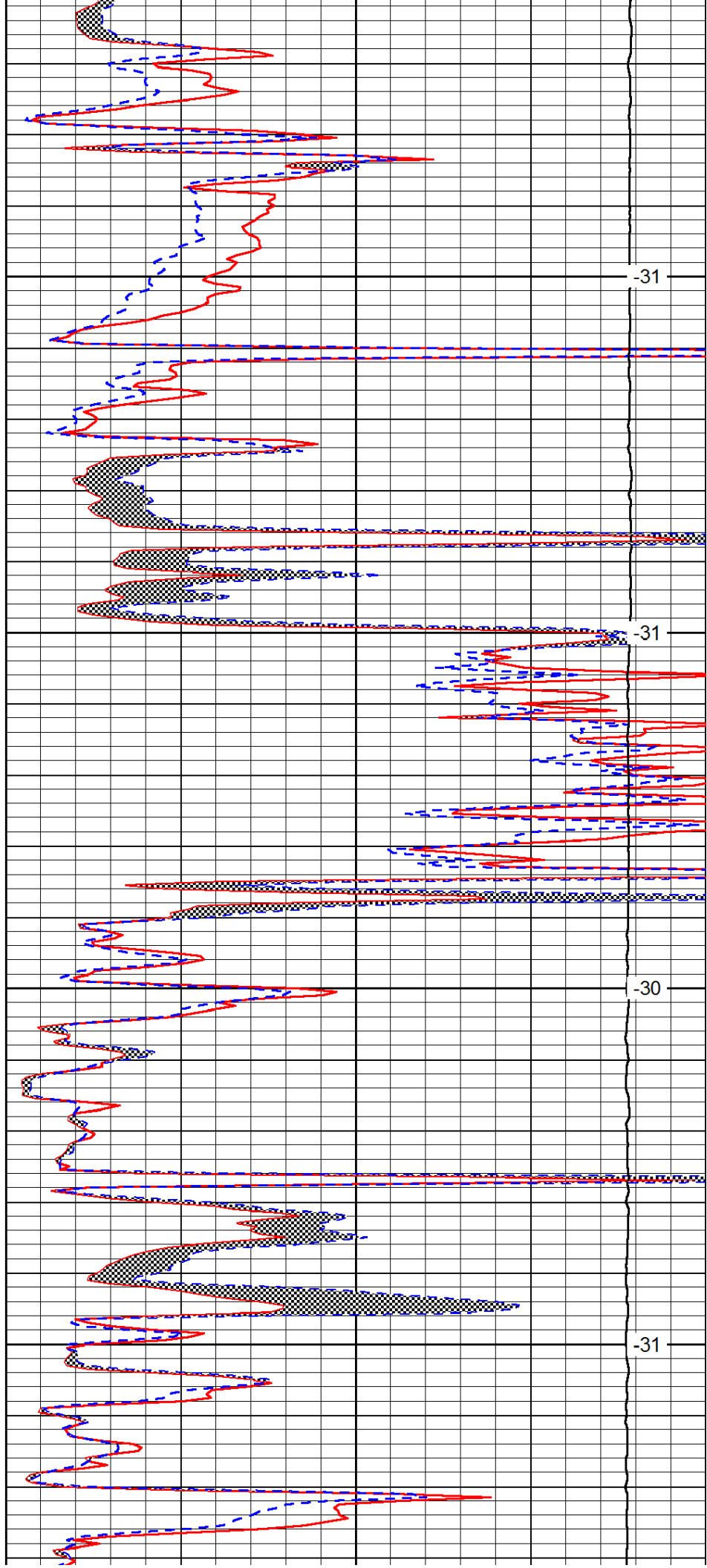


3950

4000

4050

4100

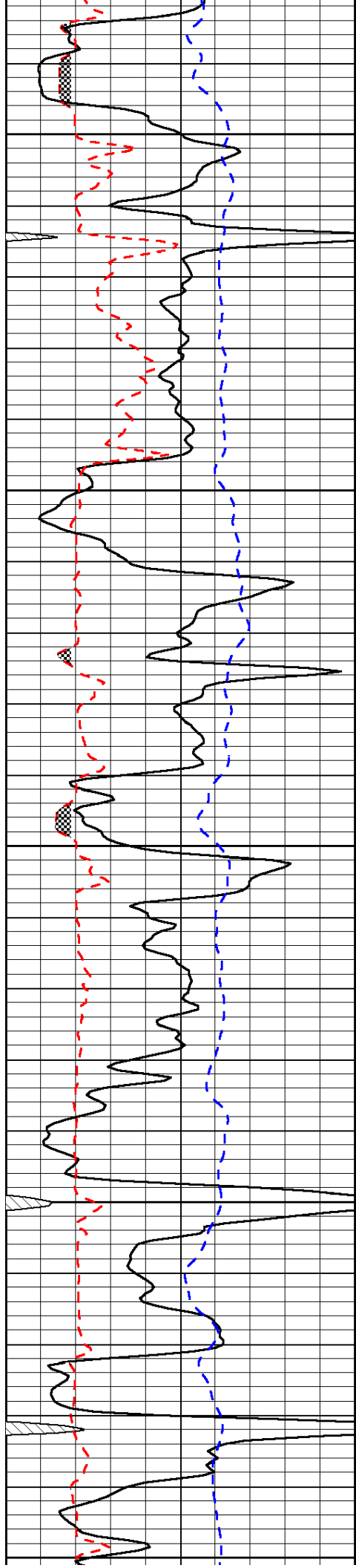


-31

-31

-30

-31



4150

-30

4200

-30

4250

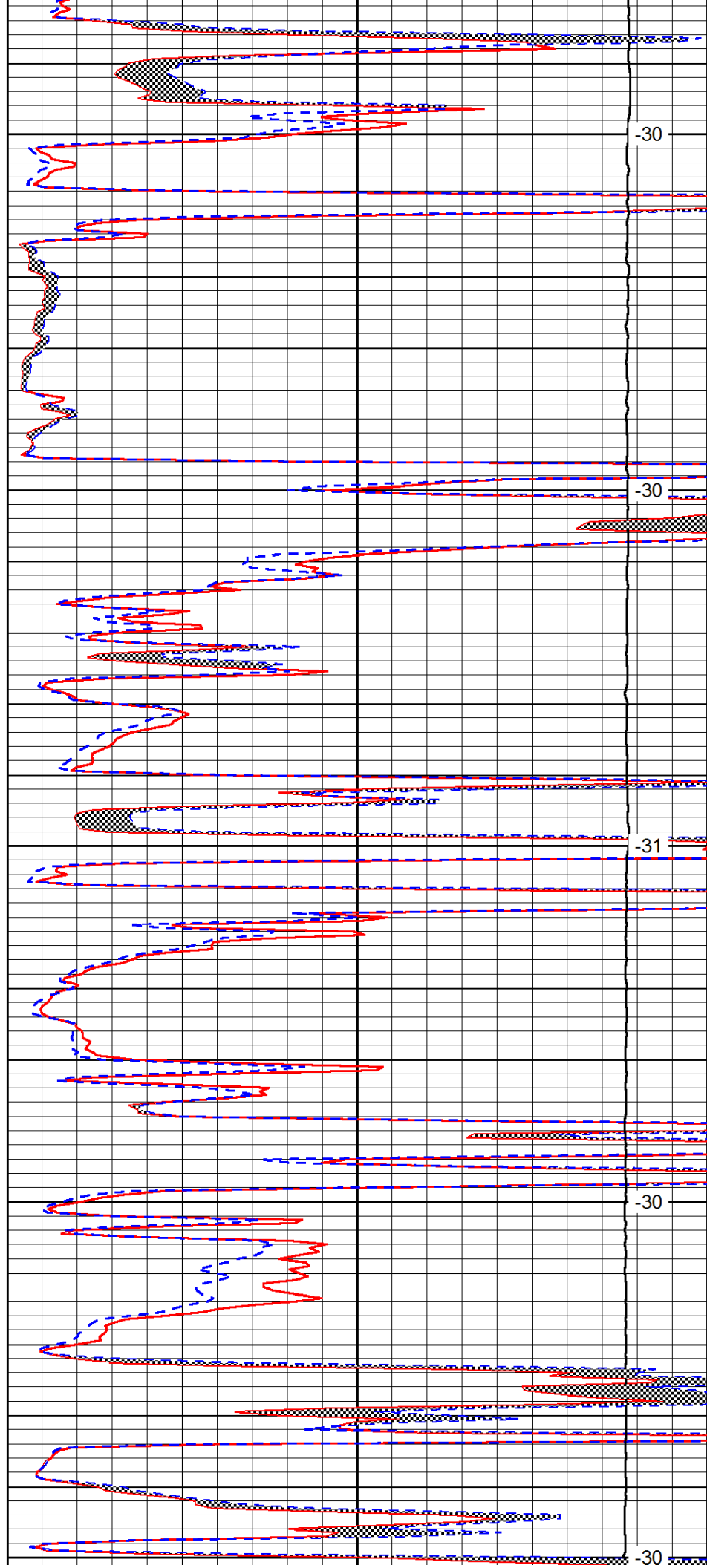
-31

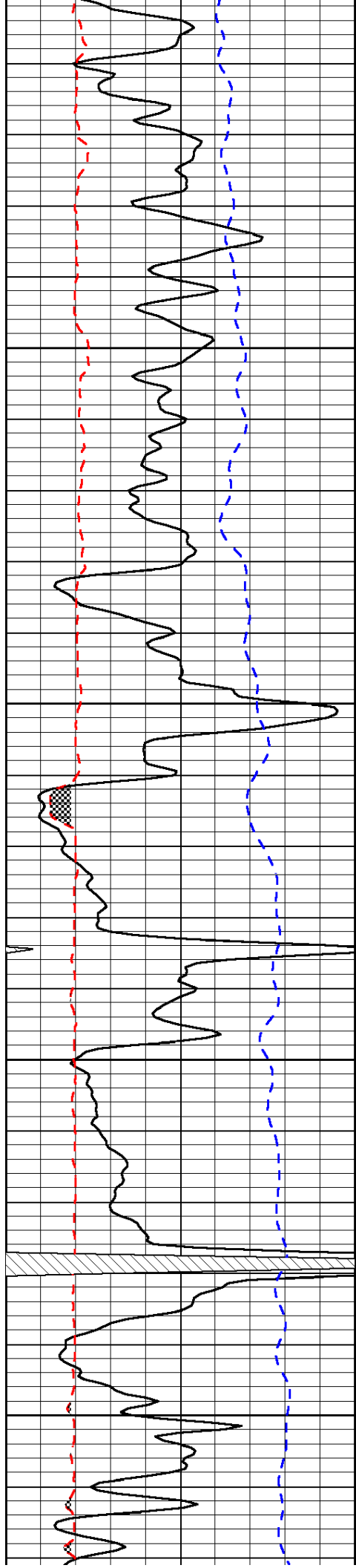
4300

-30

4350

-30



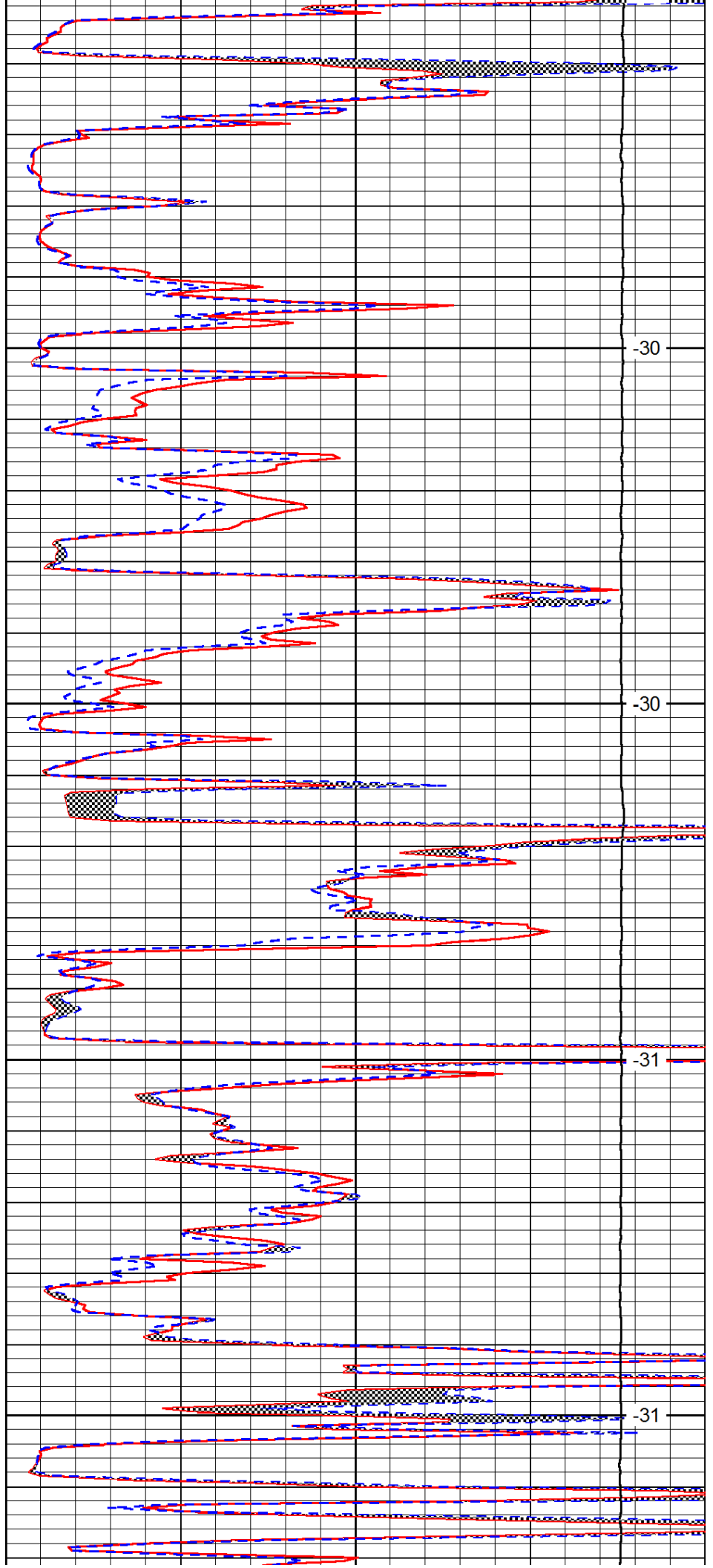


4400

4450

4500

4550

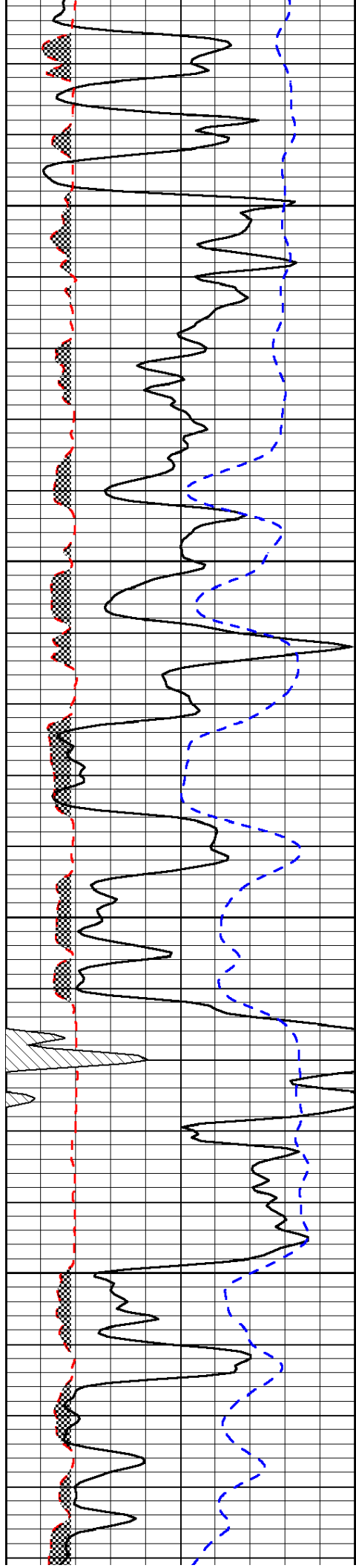


-30

-30

-31

-31

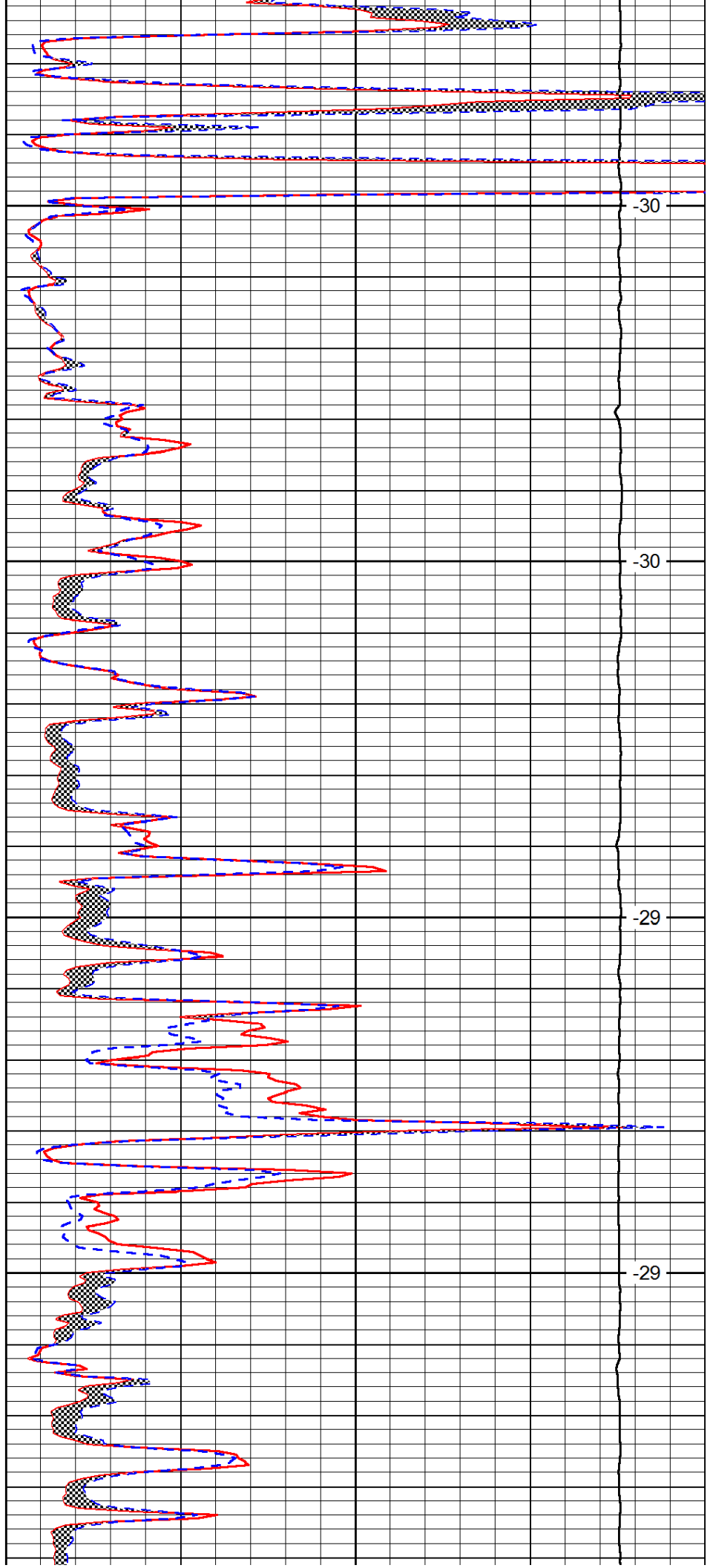


4600

4650

4700

4750

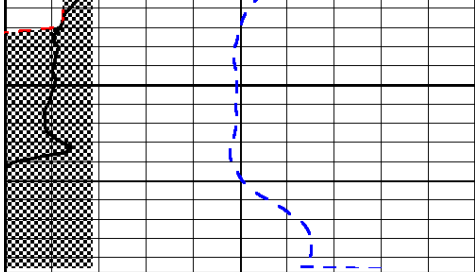


-30

-30

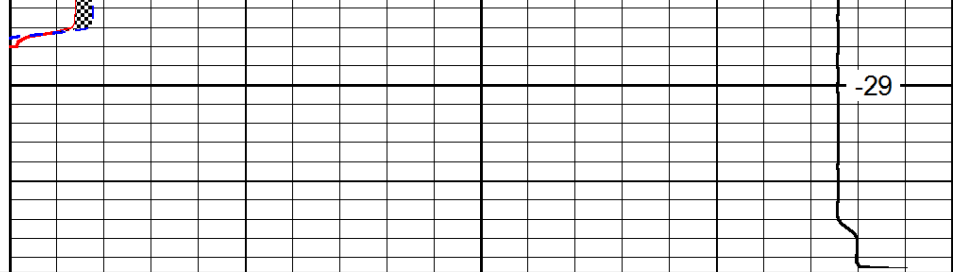
-29

-29



0	Gamma Ray	150
6	Micro Log Caliper (GAPI)	16
-200	SP (mV)	0

4800



0	Micro Inverse 1 X 1	40
0	Micro Normal 2"	40
15000	Line Weight	0

-29

LSPD