



MIDWEST SURVEYS
 LOGGING - PERFORATING - CONSULTING SERVICES
 P.O. Box 66, Osawatomie, KS 66064
 913.755.2128

GAMMA RAY / NEUTRON / CCL

File No. _____

Company Laymon Oil II, LLC

Well Fulhage No. 35-14

Field Owl Creek

County Woodson

State Kansas

Location 1155' FSL & 2805' FEL
NENE-SE-SW

Other Services Perforate

Sec. 5 Twp. 25S Rge. 16E

Permanent Datum Log Measured From Drilling Measured From

Date 08-13-2014

Run Number One

Depth Logger 1095.0

Bottom Logged Interval 1041.5 - 1040.5

Top Log Interval 200.0

Fluid Level Full

Type Fluid Water

Density / Viscosity NA

Salinity - PPM Cl NA

Max. Recorded Temp NA

Estimated Cement Top 0.0

Equipment No. Location 107 Osawatomie

Recorded By Steve Winkler

Witnessed By Mike Laymon

BORE-HOLE RECORD

RUN No. BIT TO FROM SIZE WGT. FROM TO

One 12.25" 0.0 40.0 8.825" 24.0# 0.0 40.0

Two 6.00" 40.0 1095.0 2.875" 6.5# 0.0 1046.0

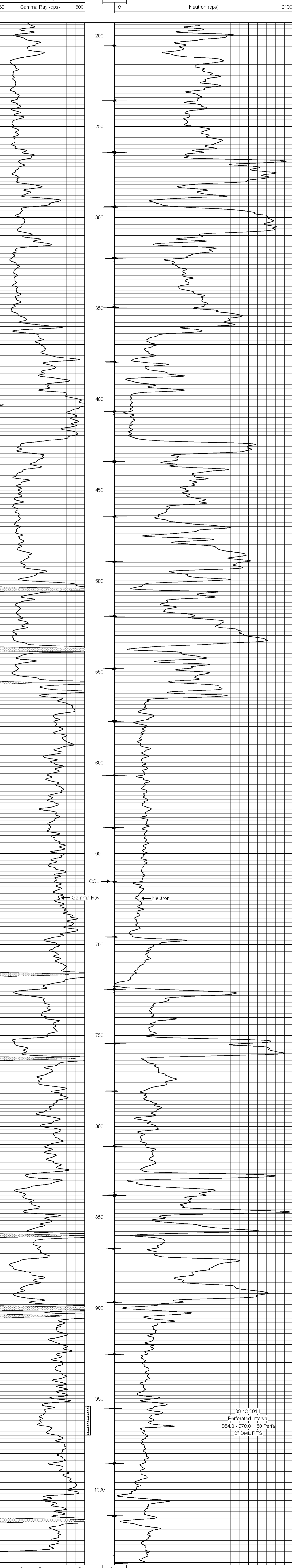
<<< Fold Here >>>

All interpretations are opinions based on inferences from electrical or other measurements and we cannot and do not guarantee the accuracy or correctness of any interpretation, and we shall not, except in the case of gross or willful negligence on our part, be liable or responsible for any loss, costs, damages, or expenses incurred or sustained by anyone resulting from any interpretation made by any of our officers, agents or employees. These interpretations are also subject to our general terms and conditions set out in our current Price Schedule.

Comments

Drilling Contractor :
Laymon Oil II LLC

Database File: fulhage 35-14.db
 Dataset Pathname: pass1
 Presentation Format: gr-n-ccl
 Dataset Creation: Wed Aug 13 10:14:56 2014 by Log SCH 111116
 Charted by: Depth in Feet scaled 1:240



08-13-2014
 Perforated Interval
 954.0 - 970.0 50 Perfs
 2" DML RTG