



MIDWEST SURVEYS
 LOGGING - PERFORATING - CONSUL TING SERVICES
 P.O. Box 68, Osawatomie, KS 66064
 913.765.2128

GAMMA RAY / NEUTRON / CCL

File No. _____

Company Laymon Oil II, LLC
 Well Fulhage No. 36-14
 Field Owl Creek

County Woodson State Kansas

Location 495' FSL & 3165' FEL
 NW-SE-SE-SW

Sec. 5 Twp. 25S Rge. 16E
 Permian/Dunm GL Elevation 995'
 Log Measured From GL K.B. NA
 Drilling Measured From GL D.F. NA
 G.L. 985'

Date 08-13-2014

Run Number One
 Depth Miller 10230.0
 Depth Logger 9999.0
 Bottom Logged Interval 9988.0
 Top Log Interval 20.0
 Fluid Level Full

Type Fluid Water
 Density / Viscosity NA
 Salinity - PPM Cl NA
 Max. Recorded Temp NA
 Estimated Cement Top 0.0
 Equipment No. 107
 Location Osawatimie
 Recorded By Steve Minkisch
 Witnessed By Mike Laymon

BORE-HOLE RECORD
 RUN No. BIT FROM TO SIZE WEIGHT FROM TO
 One 12.25" 0.0 40.0 8.635" 240# 0.0 40.0
 Two 6.00" 40.0 10200.0 2.875" 6.5# 0.0 10050.0

CASING RECORD
 RUN No. BIT FROM TO
 One 12.25" 0.0 40.0
 Two 6.00" 40.0 10200.0

API # 15-207-29,008

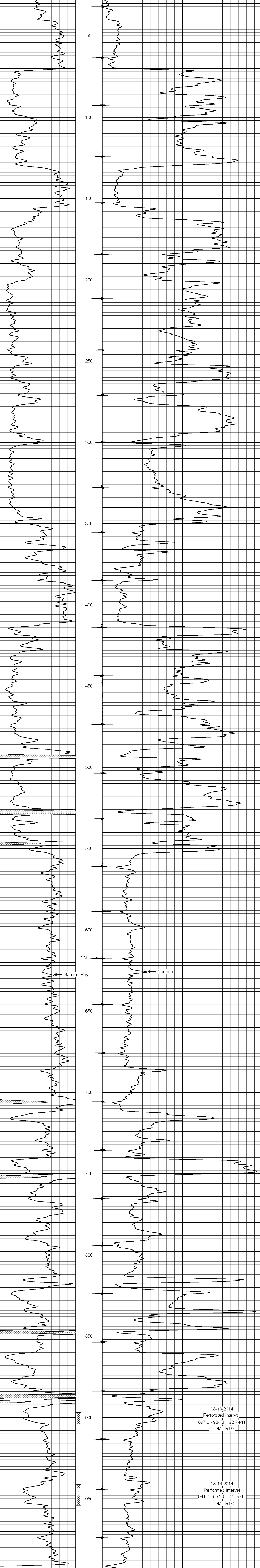
<<< Fold Here >>>

All interpretations are opinions based on inferences from electrical or other measurements and we cannot and do not guarantee the accuracy or correctness of any interpretation, and we shall not, except in the case of gross or willful negligence on our part, be liable or responsible for any loss, costs, damages, or expenses incurred or sustained by anyone resulting from any interpretation made by any of our officers, agents or employees. These interpretations are also subject to our general terms and conditions set out in our current Price Schedule.

Comments

Drilling Contractor :
 Laymon Oil II LLC

Database File: fulhage 36-14.db
 Dataset Pathname: pass1
 Presentation Format: gr-n-ccl
 Dataset Creation: Wed Aug 13 11:12:29 2014 by Log SCH 111116
 Charted by: Depth in Feet scaled 1:240



0 Gamma Ray (cps) 150
 150 Gamma Ray (cps) 300
 -1 CCL 1
 10 Neutron (cps) 2100