



Pioneer Energy Services

Microresistivity Log

15-007-24,097-00-00

API No.

Company Dixon Energy, Inc.

Well Clarke #1

Field Medicine River

County Barber State

Kansas

Location

80' FSL & 330' FEL

Other Services
CNL/CDL
DIL

Sec: 5

Twp: 32S

Rge: 12W

Permanent Datum
Log Measured From
Drilling Measured From

Ground Level
Kelly Bushing
From Kelly Bushing

Elevation 1475
10 Ft. Above Perm. Datum

Elevation

K.B. 1485
D.F. 1475
G.L. 1475

Date 10/29/2013

Run Number Two

Depth Driller 4686

Depth Logger 4683

Bottom Logged Interval 4682

Top Log Interval 3400

Casing Driller 8.625 @ 261

Casing Logger 264

Bit Size 7.875

Type Fluid in Hole Chemical

Salinity, ppm CL 6000

Density / Viscosity 9.4 51

pH / Fluid Loss 8.5 10.4

Source of Sample Flowline

Rm @ Meas. Temp 0.65 @ 76

Rmf @ Meas. Temp 0.49 @ 76

Rmc @ Meas. Temp 0.88 @ 76

Source of Rmf / Rmc Charts

Rm @ BHT 0.40 @ 123

Operating Rig Time 4 1/2 Hours

Max Rec. Temp. F 123

Equipment Number 15

Location Hays

Recorded By D.Kerr

Witnessed By David Gould

<<< Fold Here >>>

All interpretations are opinions based on inferences from electrical or other measurements and we cannot and do not guarantee the accuracy or correctness of any interpretation, and we shall not, except in the case of gross or willful negligence on our part, be liable or responsible for any loss, costs, damages, or expenses incurred or sustained by anyone resulting from any interpretation made by any of our officers, agents or employees. These interpretations are also subject to our general terms and conditions set out in our current Price Schedule.

Comments

Thank you for using Pioneer Energy Services
www.pioneerenergy.com
785 625 3858

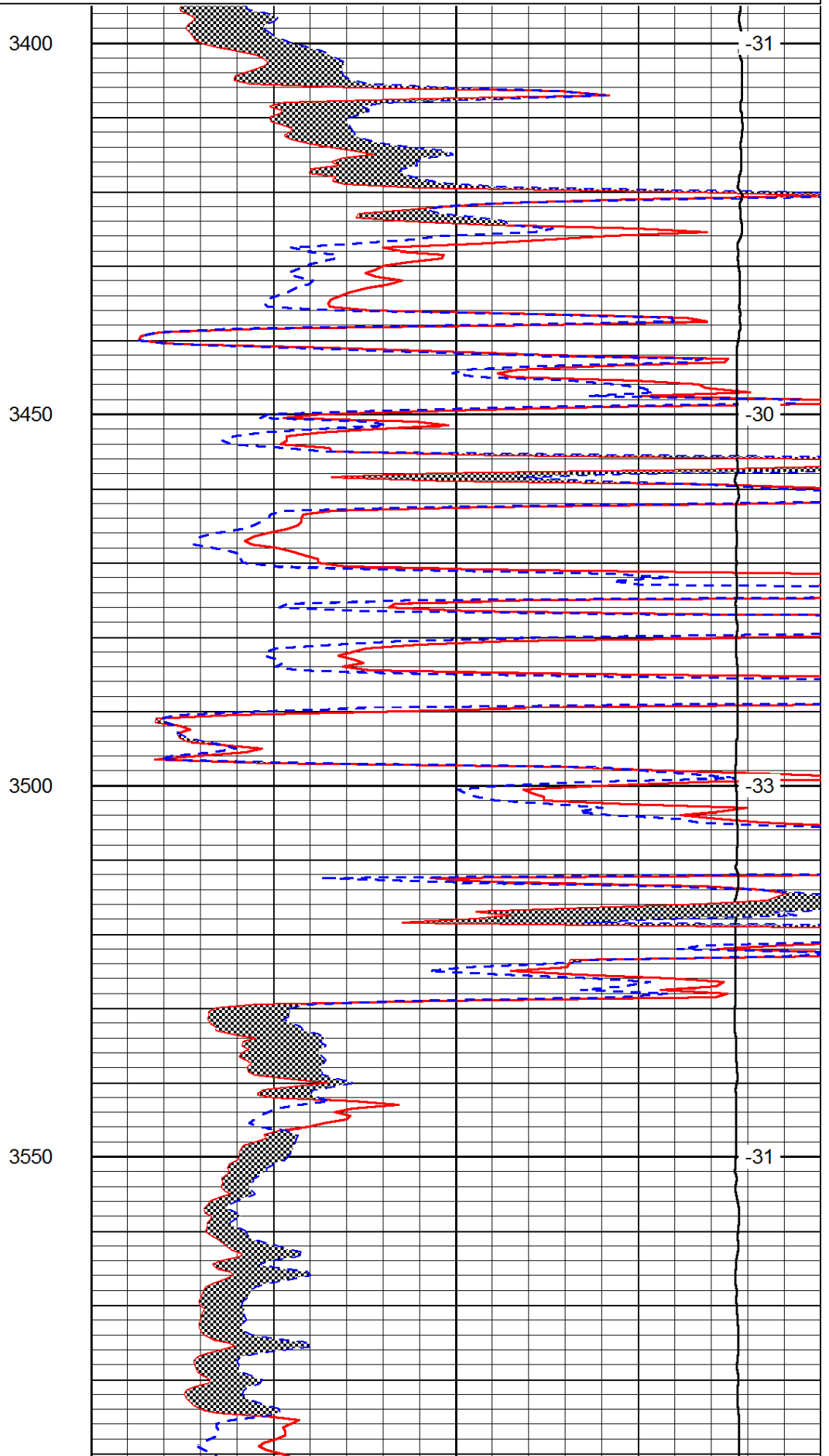
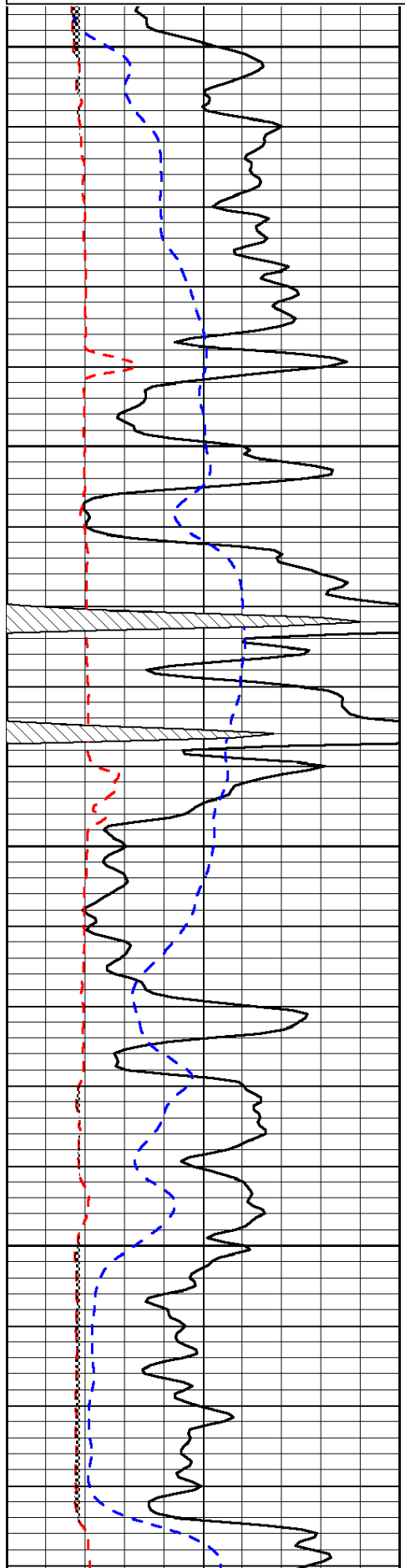
Medicine Lodge KS,
3 West, 3/4 North, West Into

Database File: c:\warrior\data\dixon energy_clarke #1\dixon_clarke_1hd.db
Dataset Pathname: DIL\dixstk2
Presentation Format: micro
Dataset Creation: Tue Oct 29 12:41:43 2013
Charted by: Depth in Feet scaled 1:240

0	Gamma Ray	150
6	Micro Log Caliper (GAPI)	16
-200	SP (mV)	0

0	Micro Inverse 1 X 1	40
0	Micro Normal 2"	40
15000	Line Weight	0

LSPD



3400

3450

3500

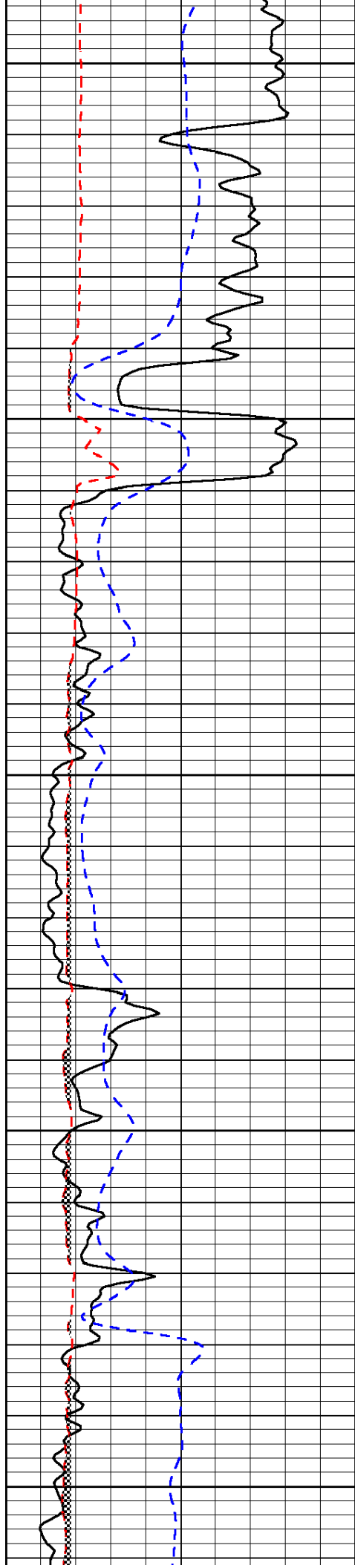
3550

-31

-30

-33

-31



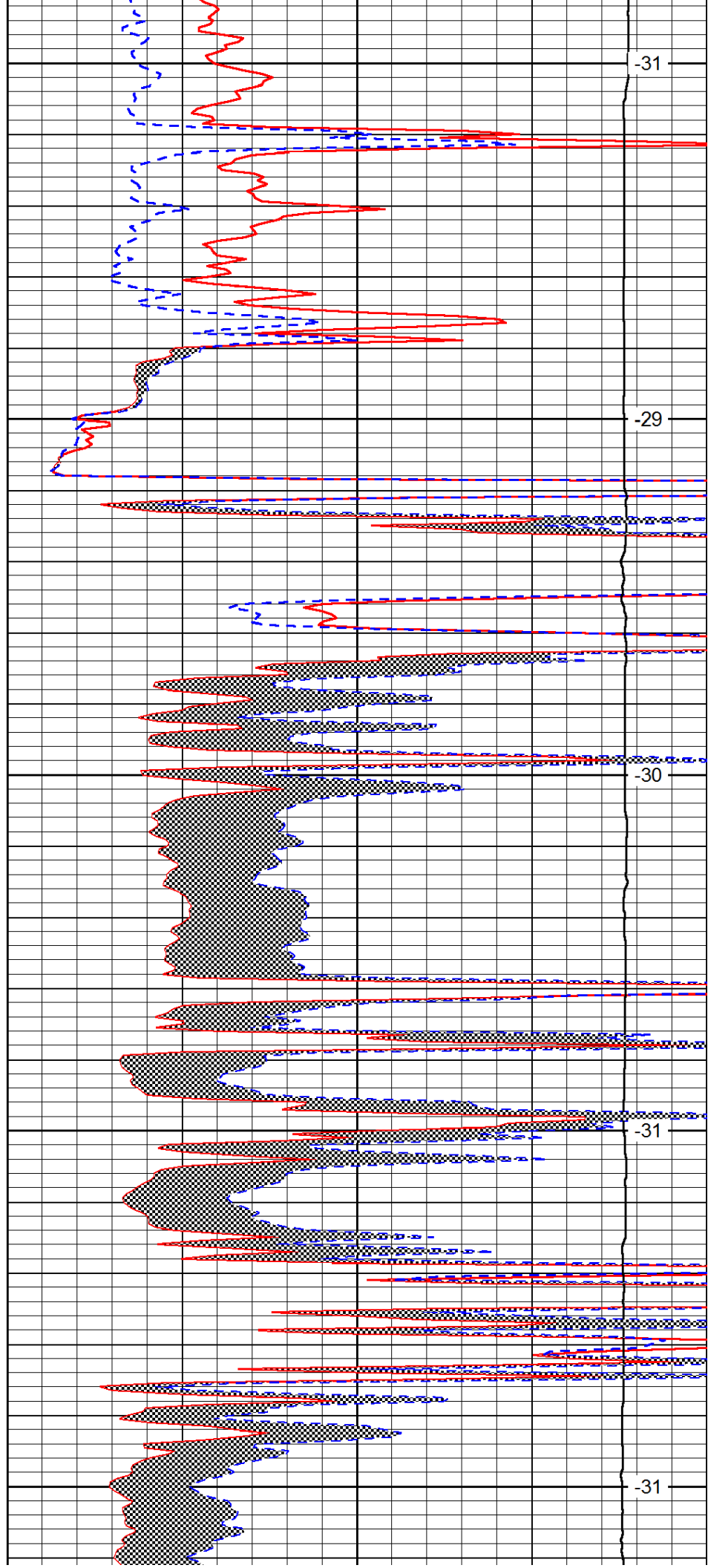
3600

3650

3700

3750

3800



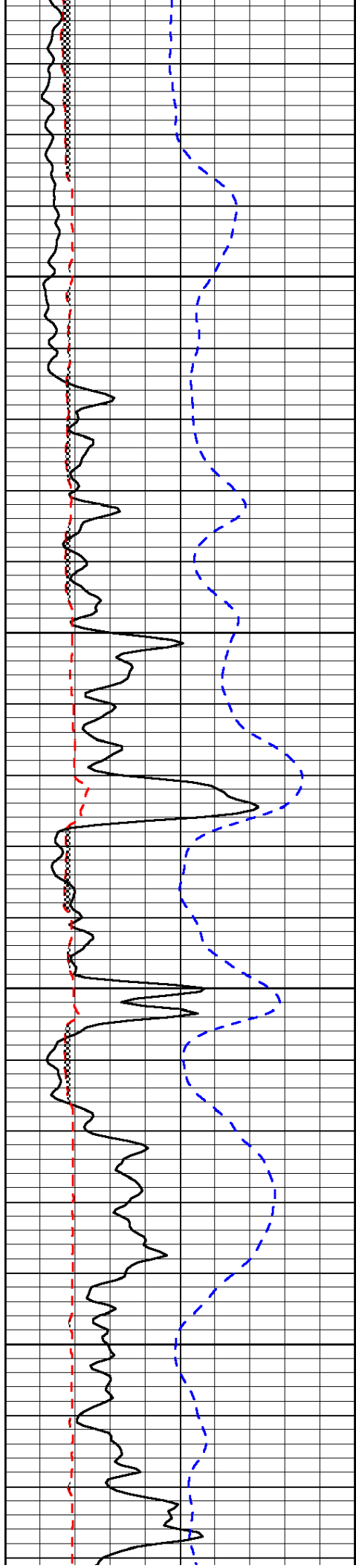
-31

-29

-30

-31

-31

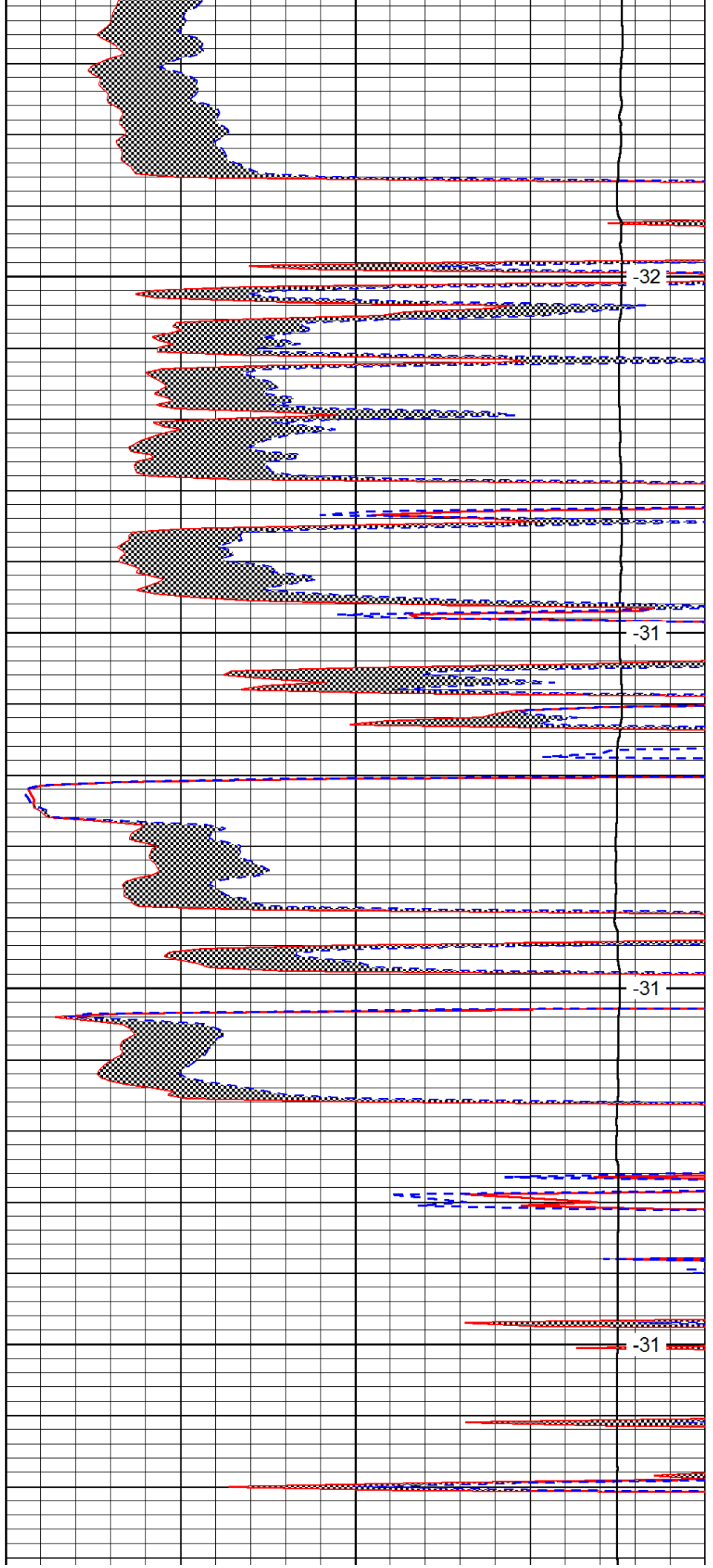


3850

3900

3950

4000

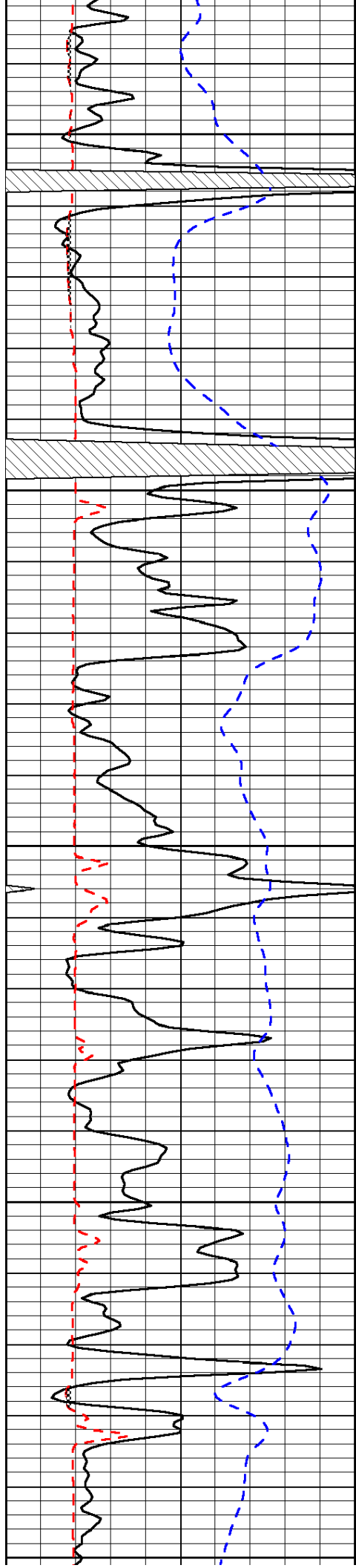


-32

-31

-31

-31



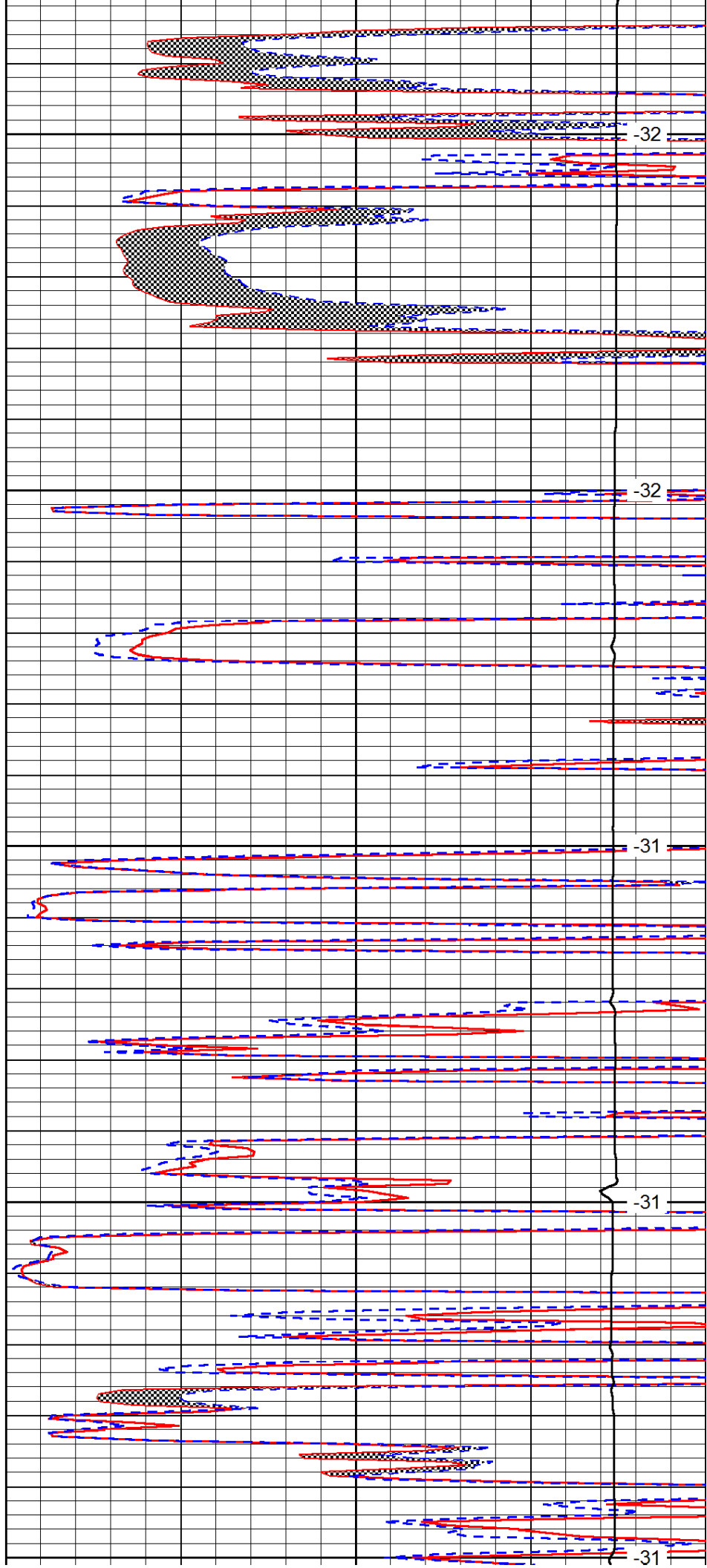
4050

4100

4150

4200

4250



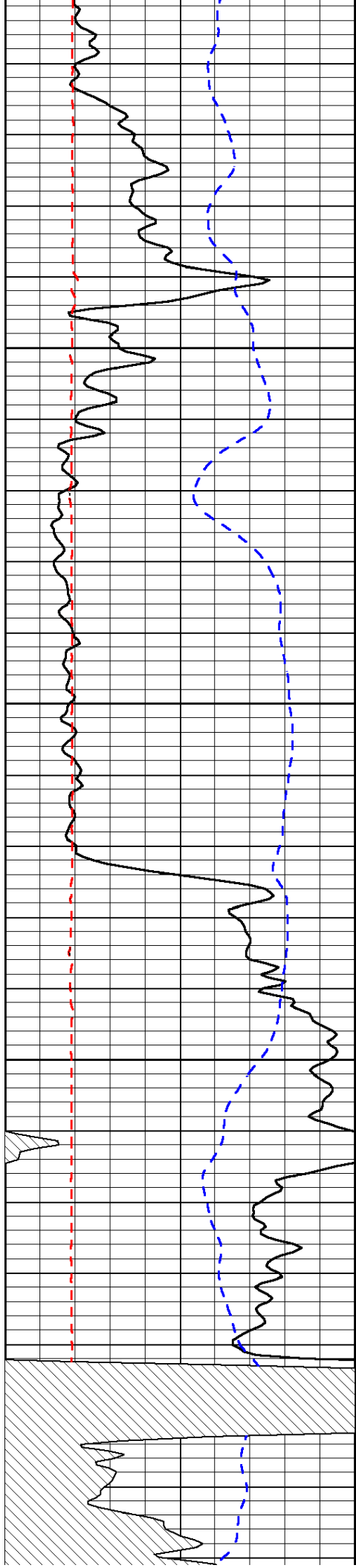
-32

-32

-31

-31

-31

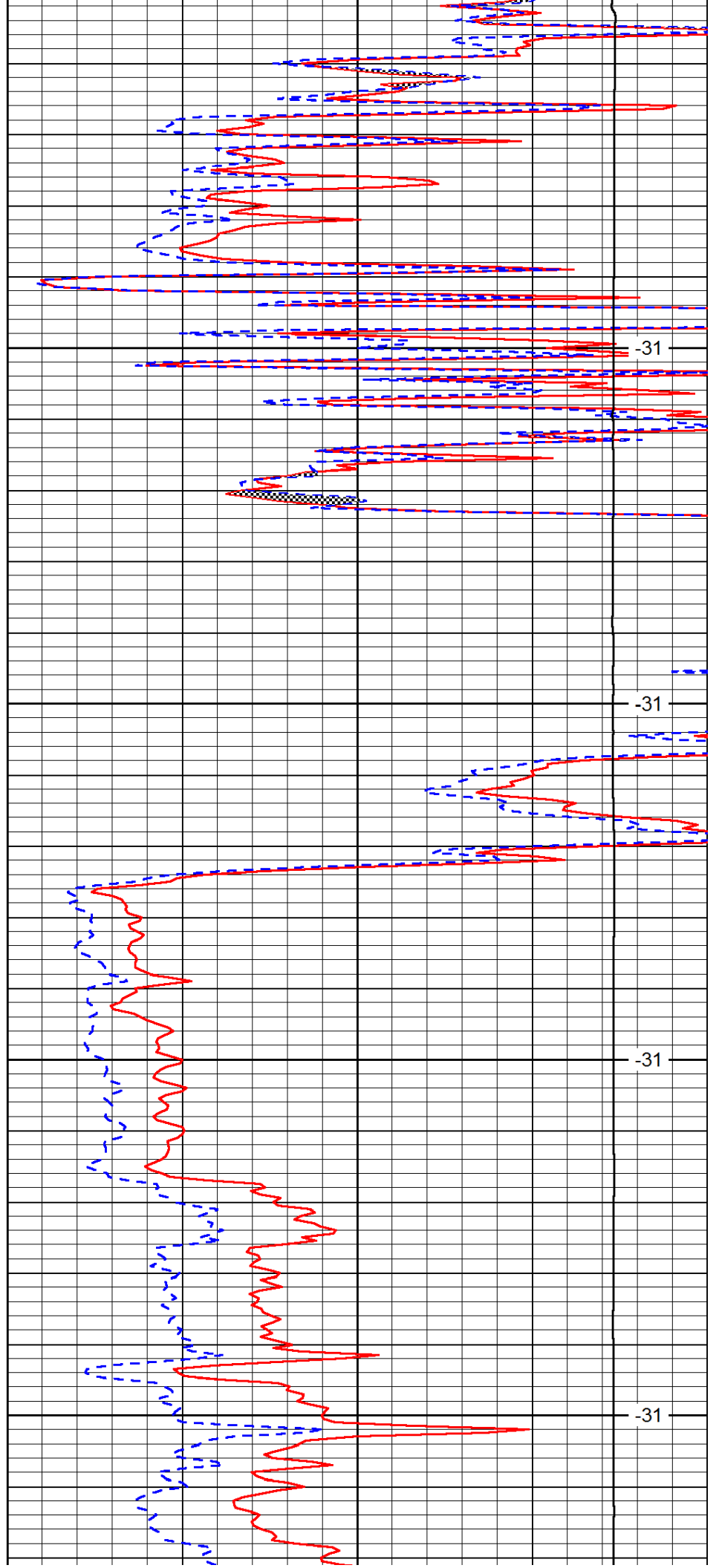


4300

4350

4400

4450

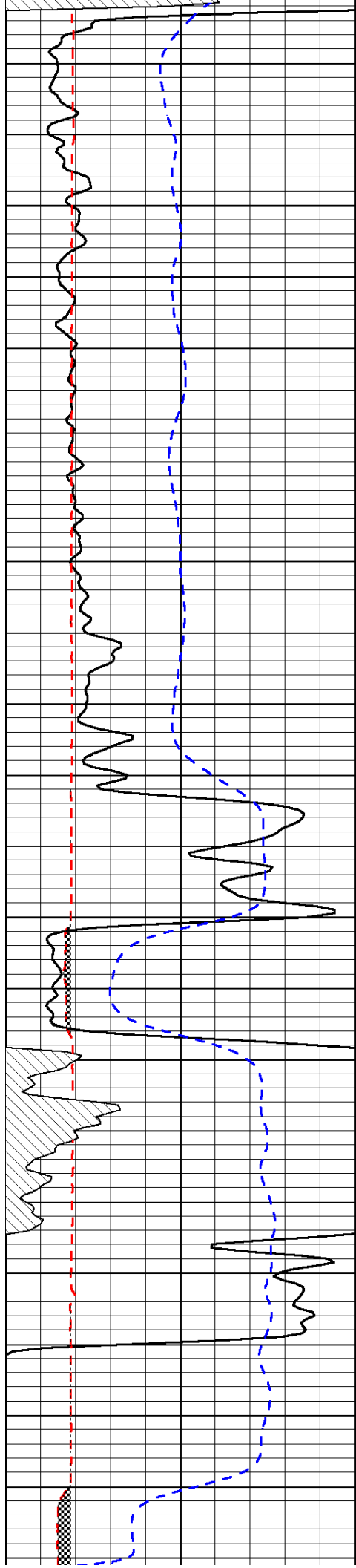


-31

-31

-31

-31

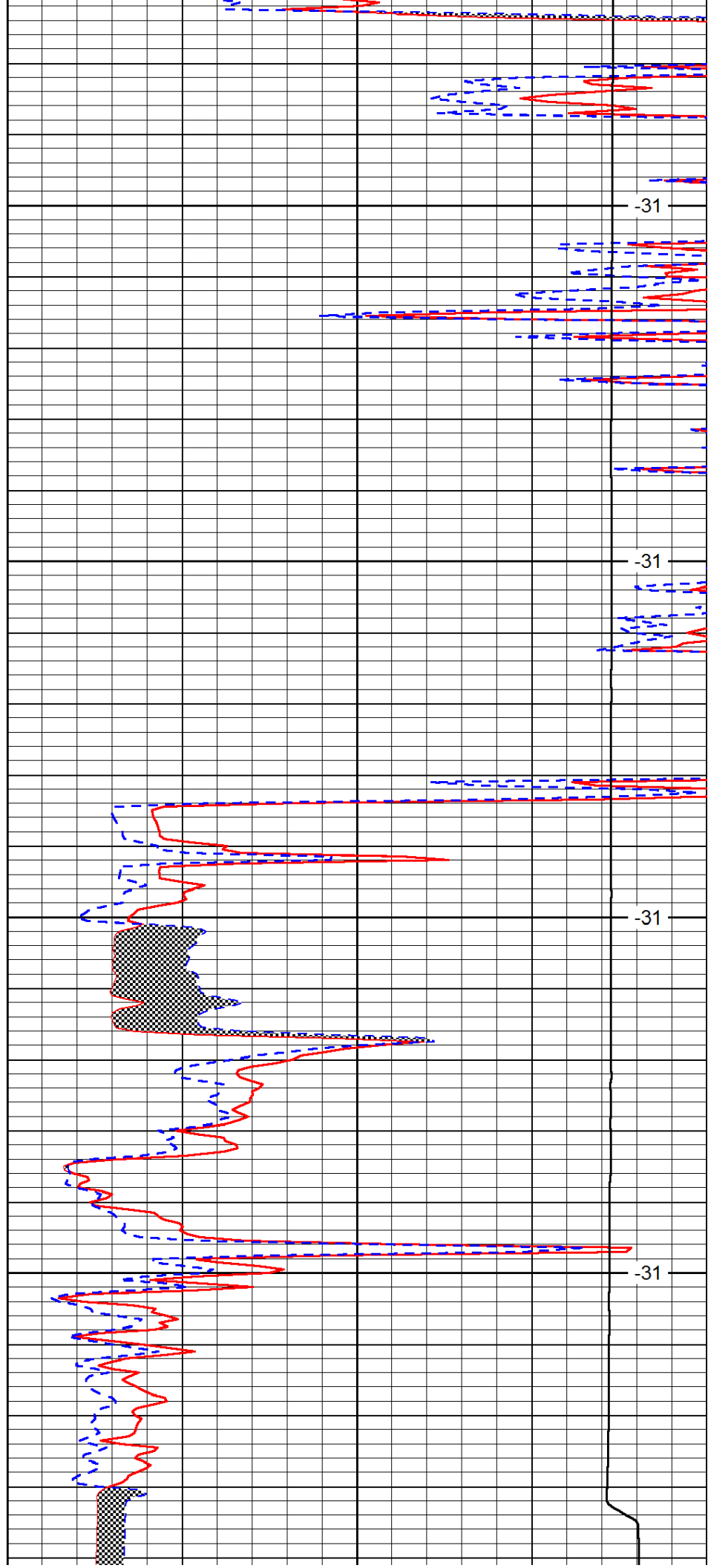


4500

4550

4600

4650



-31

-31

-31

-31

0	Gamma Ray	150
6	Micro Log Caliper (GAPI)	16
-200	SP (mV)	0

0	Micro Inverse 1 X 1	40
0	Micro Normal 2"	40
15000	Line Weight	0

LSPD