



Pioneer Energy Services

Dual Induction Log

15-007-24,097-00-00

API No.

Company Dixon Energy, Inc.

Well Clarke #1

Field Medicine River

County Barber State

Kansas

Location

80' FSL & 330' FEL

Other Services
CNL/CDL
MEL

Sec: 5 Twp: 32S Rge: 12W

Permanent Datum Ground Level Elevation 1475
Log Measured From Kelly Bushing 10 Ft. Above Perm. Datum
Drilling Measured From Kelly Bushing

Elevation

K.B. 1485

D.F. 1475

G.L. 1475

Date 10/29/2013

Run Number One

Depth Driller 4686

Depth Logger 4683

Bottom Logged Interval 4682

Top Log Interval 250

Casing Driller 8.625 @ 261

Casing Logger 264

Bit Size 7.875

Type Fluid in Hole Chemical

Salinity, ppm CL 6000

Density / Viscosity 9.4 51

pH / Fluid Loss 8.5 10.4

Source of Sample Flowline

Rm @ Meas. Temp 0.65 @ 76

Rmf @ Meas. Temp 0.49 @ 76

Rmc @ Meas. Temp 0.88 @ 76

Source of Rmf / Rmc Charts

Rm @ BHT 0.40 @ 123

Operating Rig Time 4 1/2 Hours

Max Rec. Temp. F 123

Equipment Number 15

Location Hays

Recorded By D. Kerr

Witnessed By David Gould

<<< Fold Here >>>

All interpretations are opinions based on inferences from electrical or other measurements and we cannot and do not guarantee the accuracy or correctness of any interpretation, and we shall not, except in the case of gross or willful negligence on our part, be liable or responsible for any loss, costs, damages, or expenses incurred or sustained by anyone resulting from any interpretation made by any of our officers, agents or employees. These interpretations are also subject to our general terms and conditions set out in our current Price Schedule.

Comments

Thank you for using Pioneer Energy Services
www.pioneerenergy.com
785 625 3858

Medicine Lodge KS,
3 West, 3/4 North, West Into

Database File: c:\warrior\data\dixon energy_clarke #1\dixon_clarke_1hd.db
Dataset Pathname: DIL\dixstk2
Presentation Format: dil2in
Dataset Creation: Tue Oct 29 12:41:43 2013
Charted by: Depth in Feet scaled 1:600

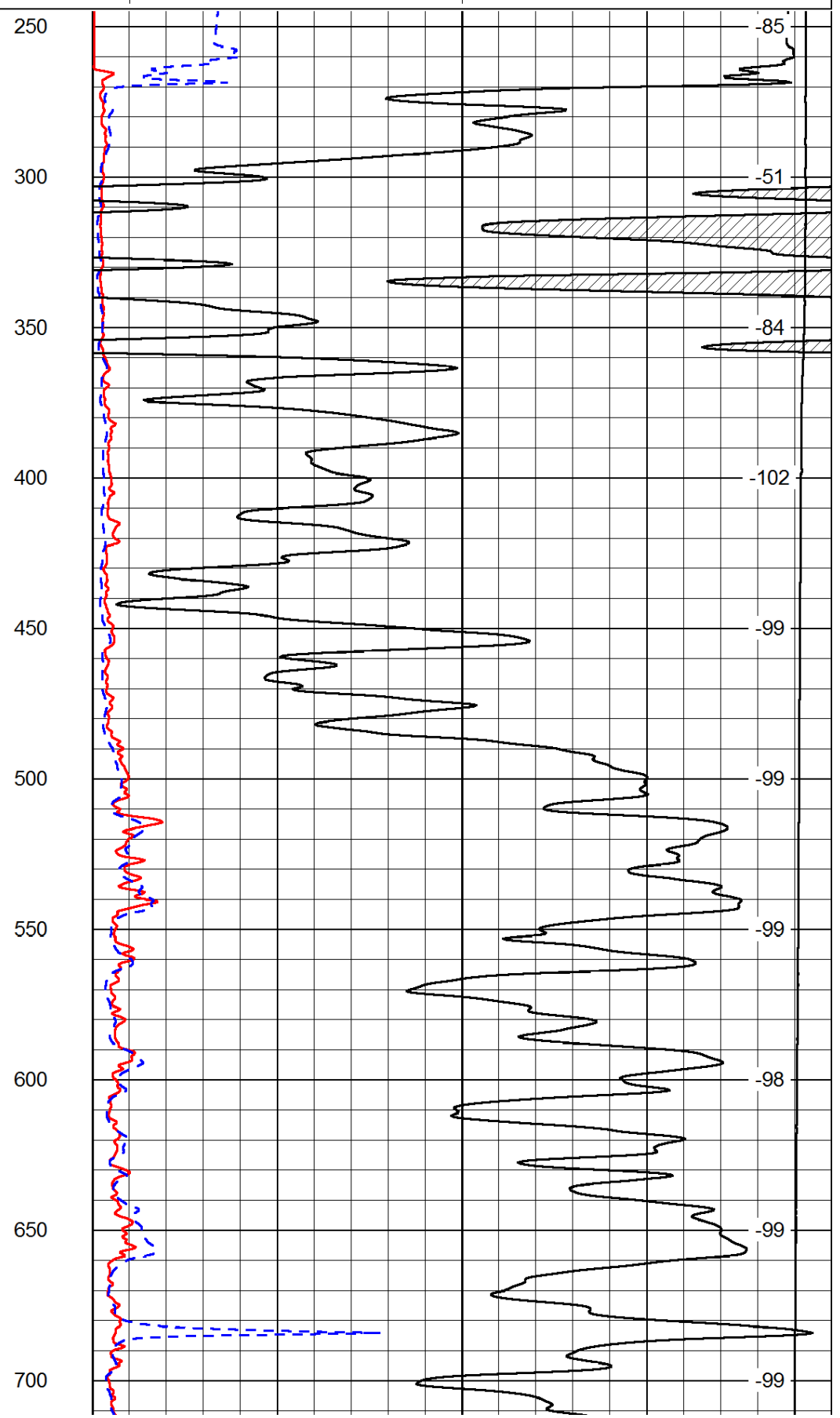
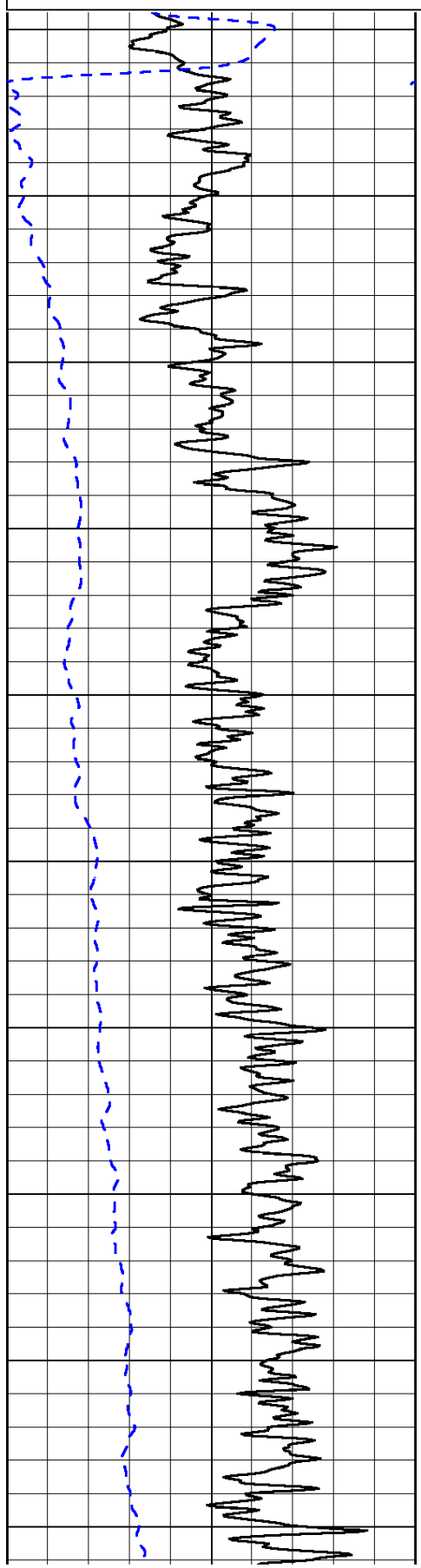
0	Gamma Ray	150
-200	SP (mV)	0

0	Shallow Resistivity	50
0	Deep Resistivity	50

LSPD

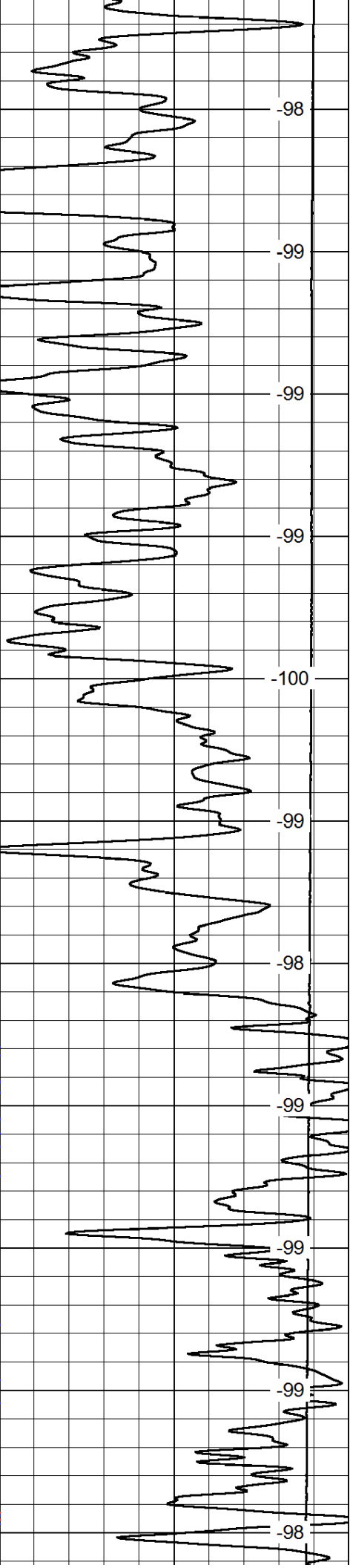
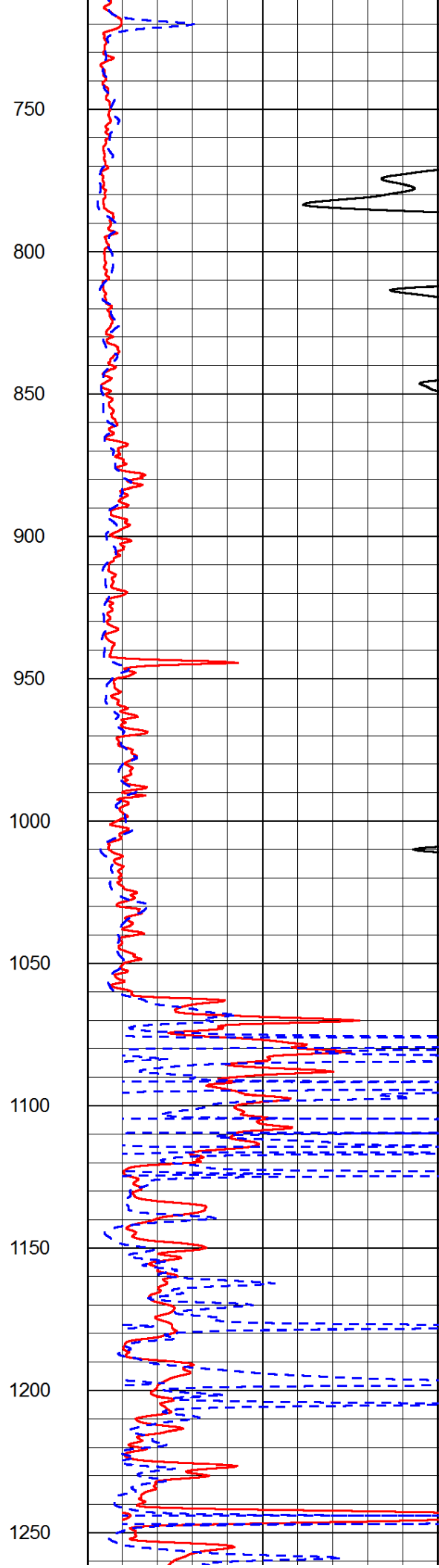
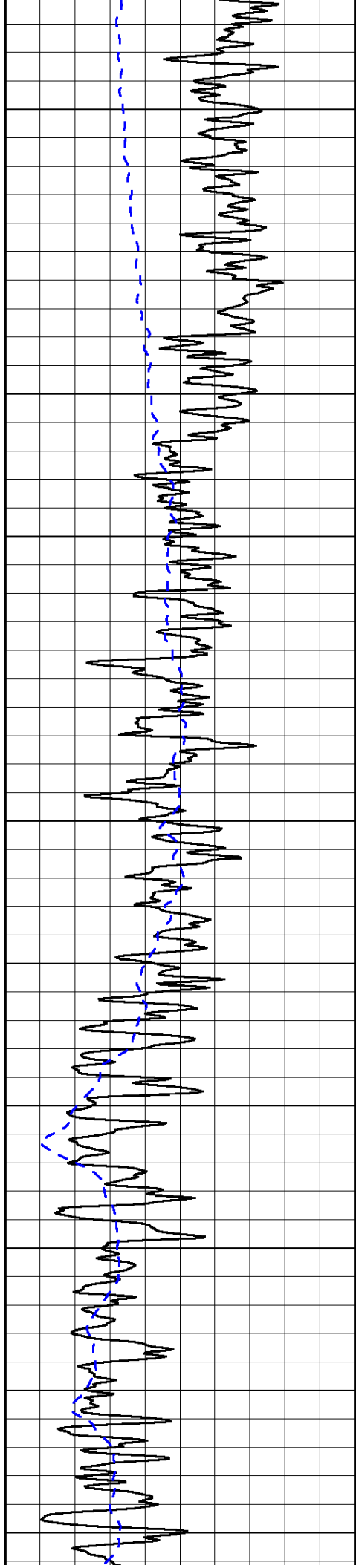
1000	Conductivity	0
15000	Line Tension	0

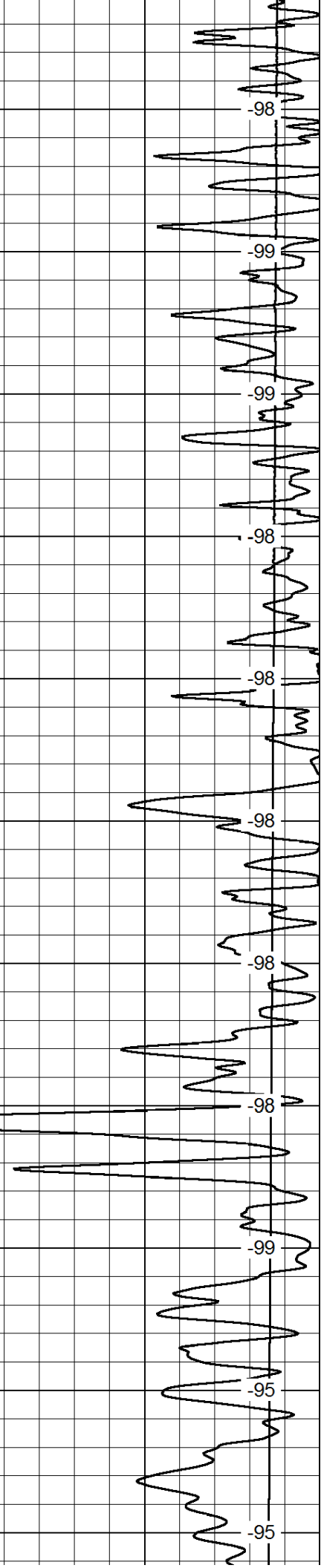
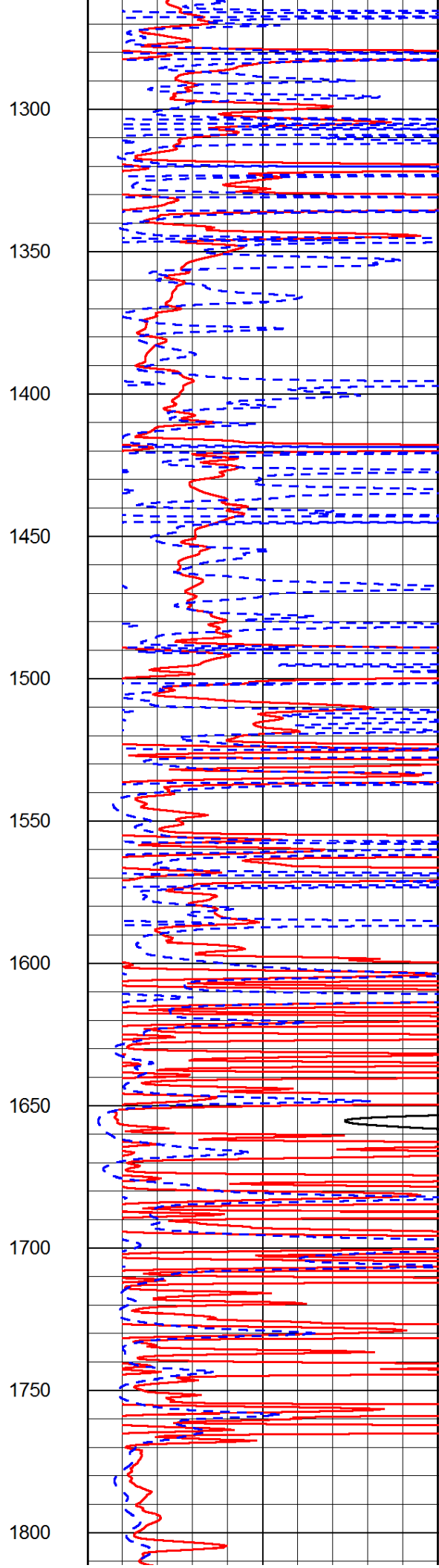
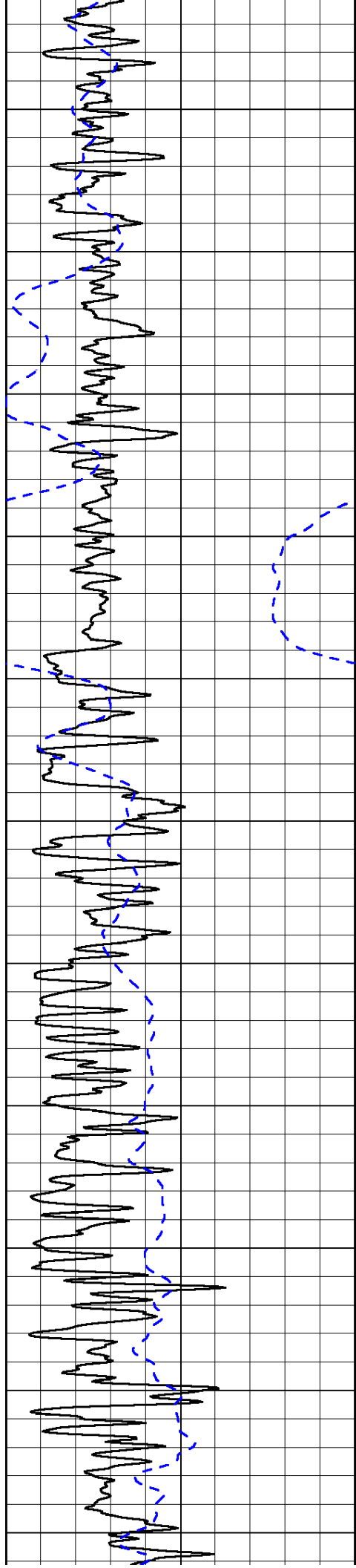
50	Shallow Resistivity	500
50	Deep Resistivity	500

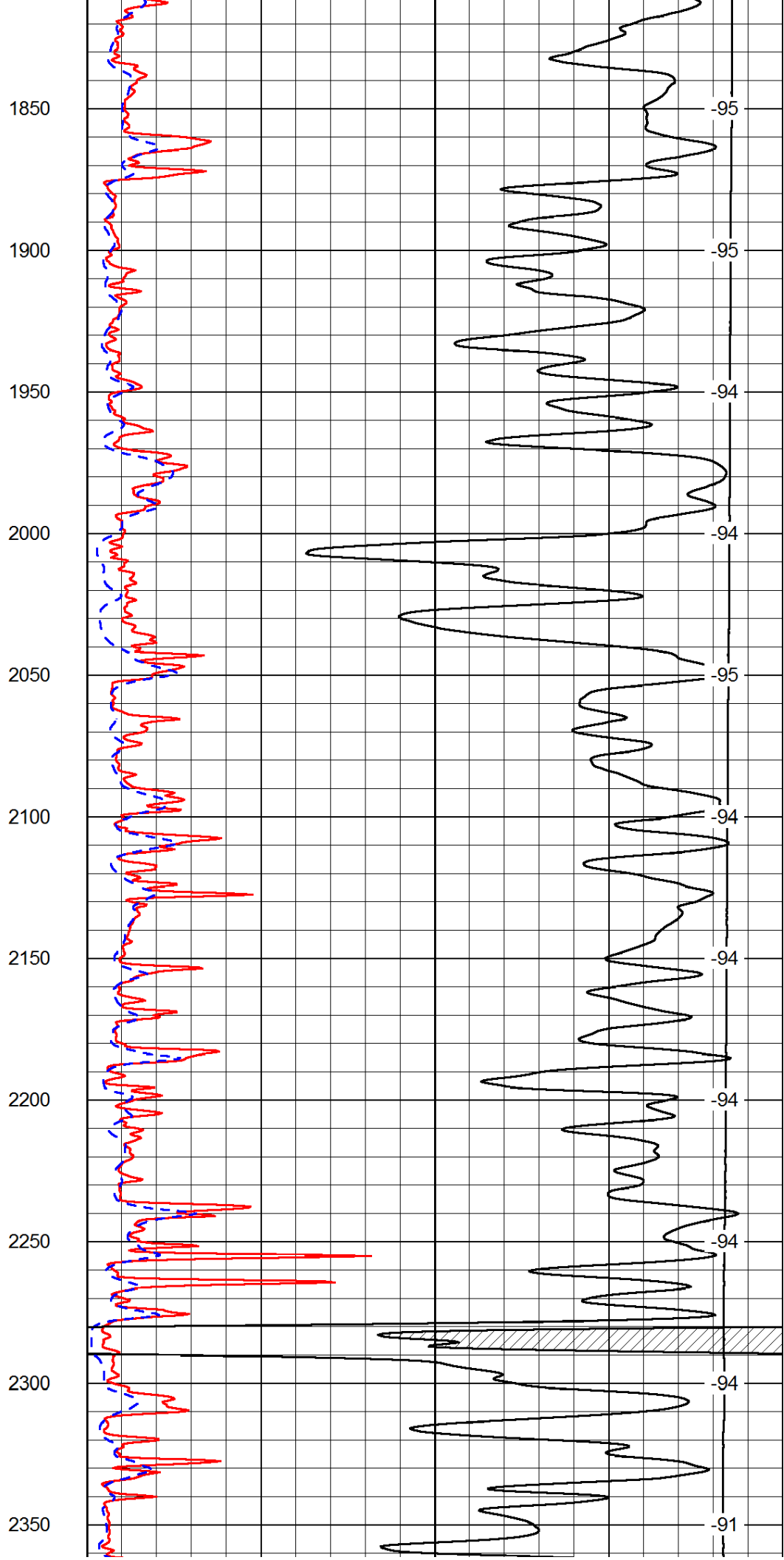
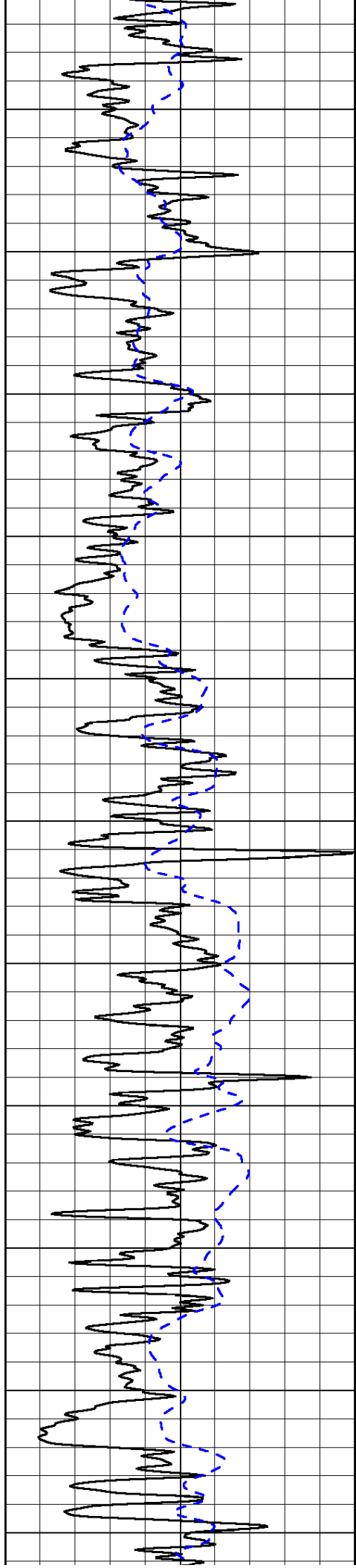


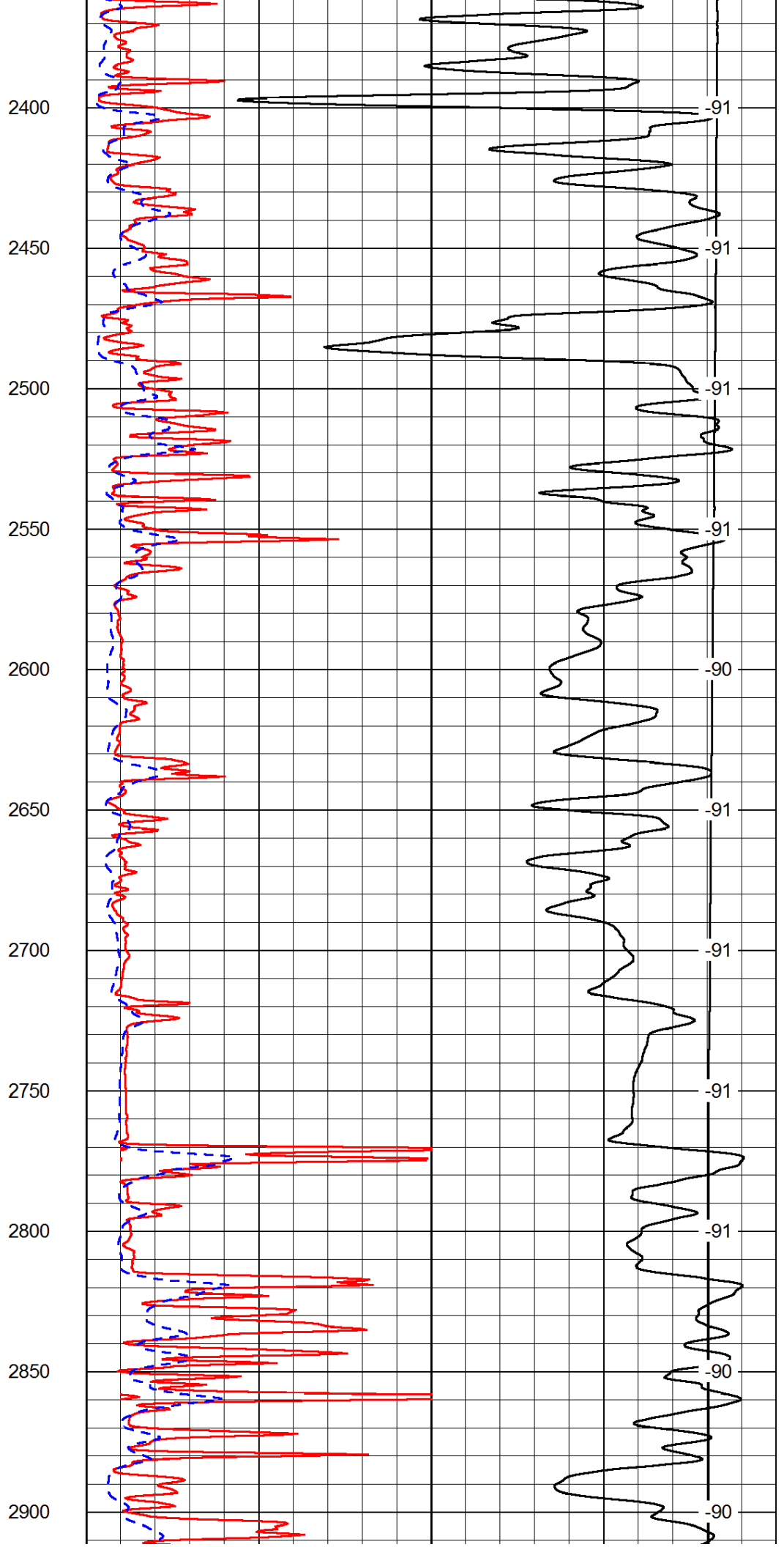
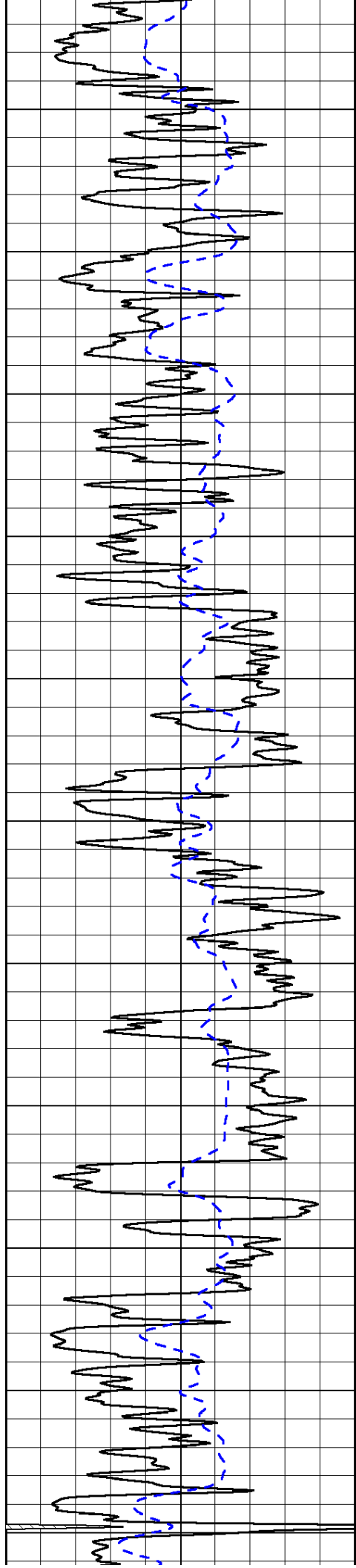
250
300
350
400
450
500
550
600
650
700

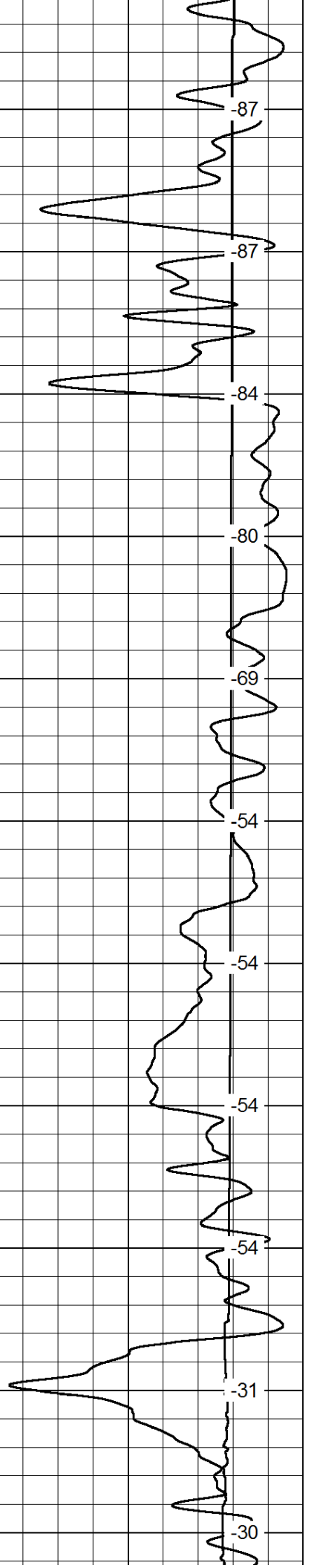
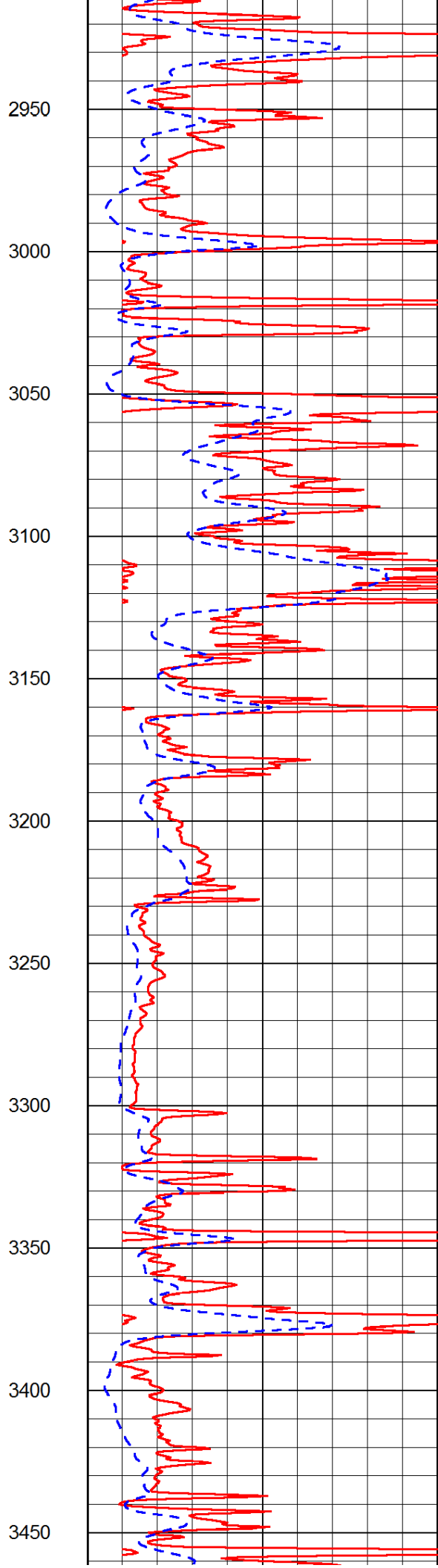
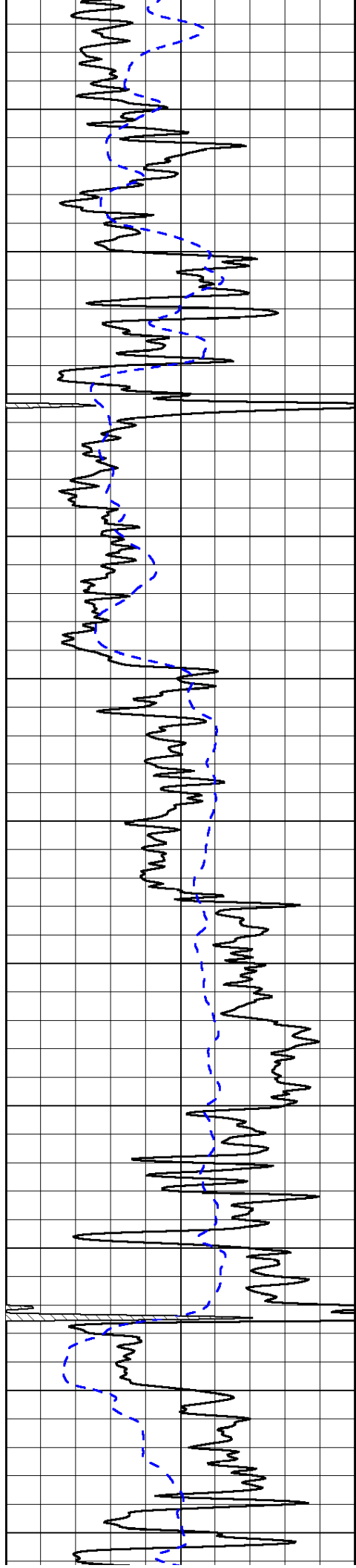
-85
-51
-84
-102
-99
-99
-99
-98
-99
-99

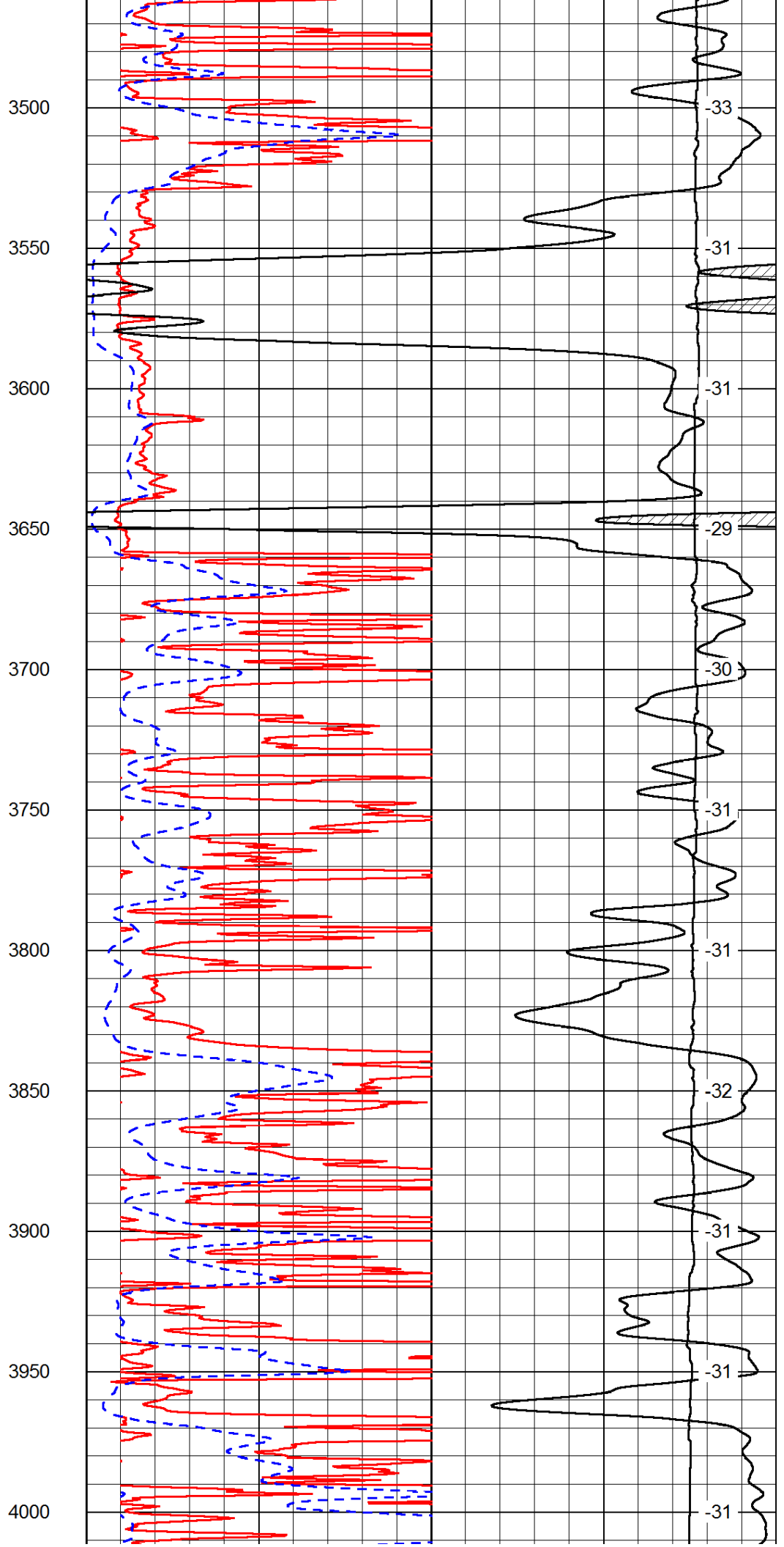
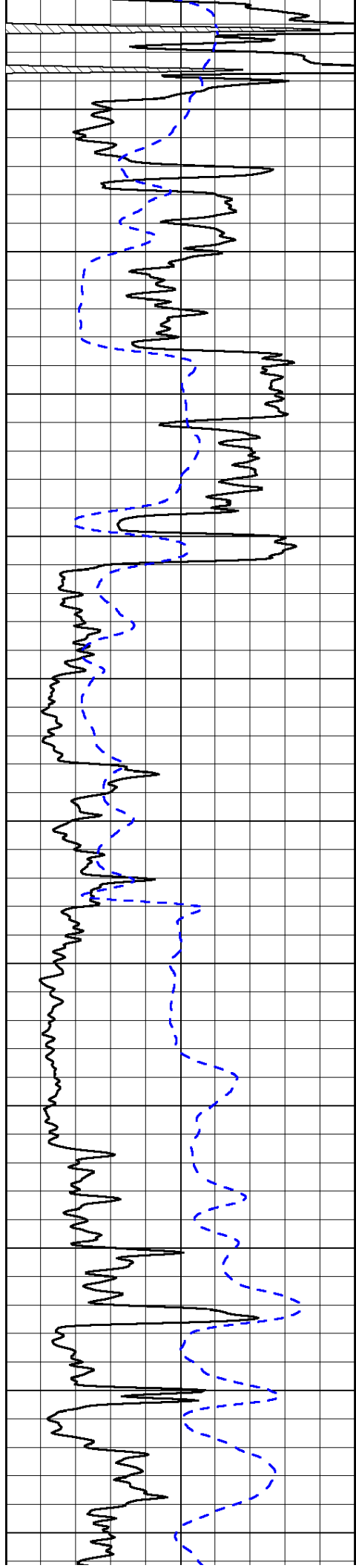


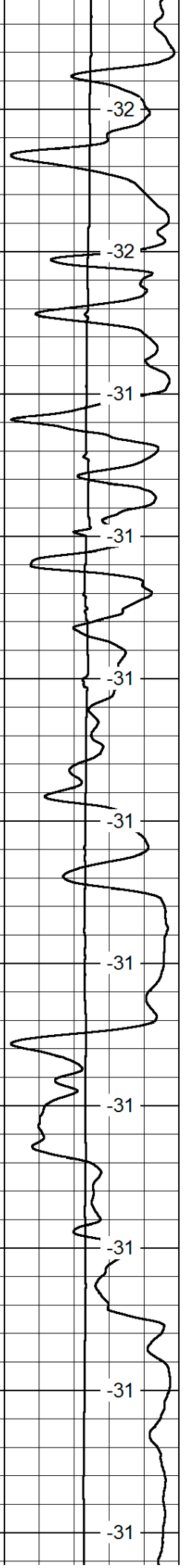
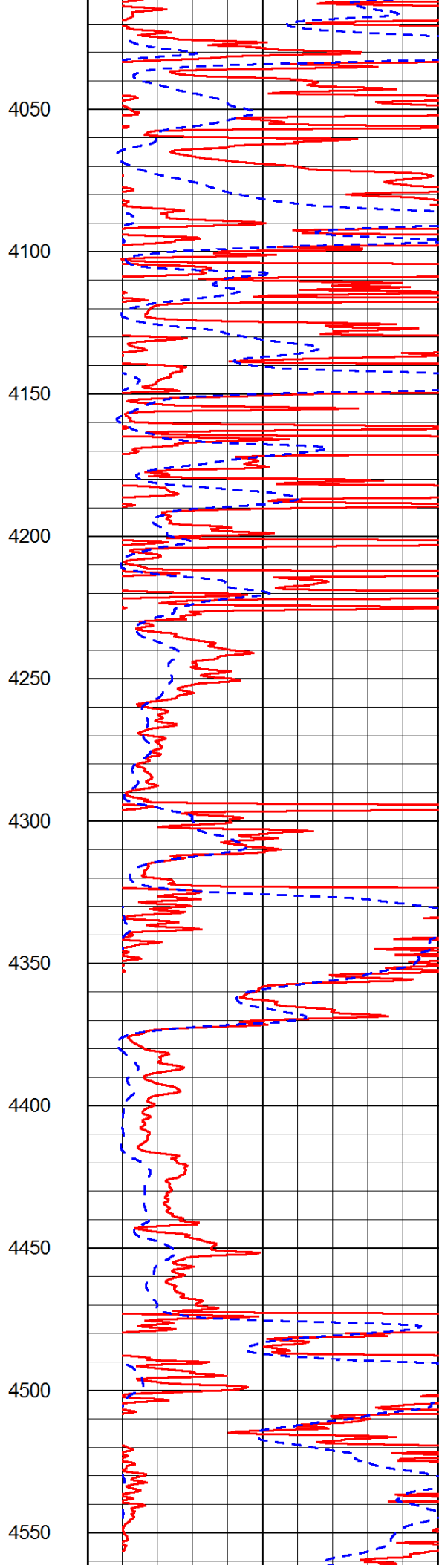
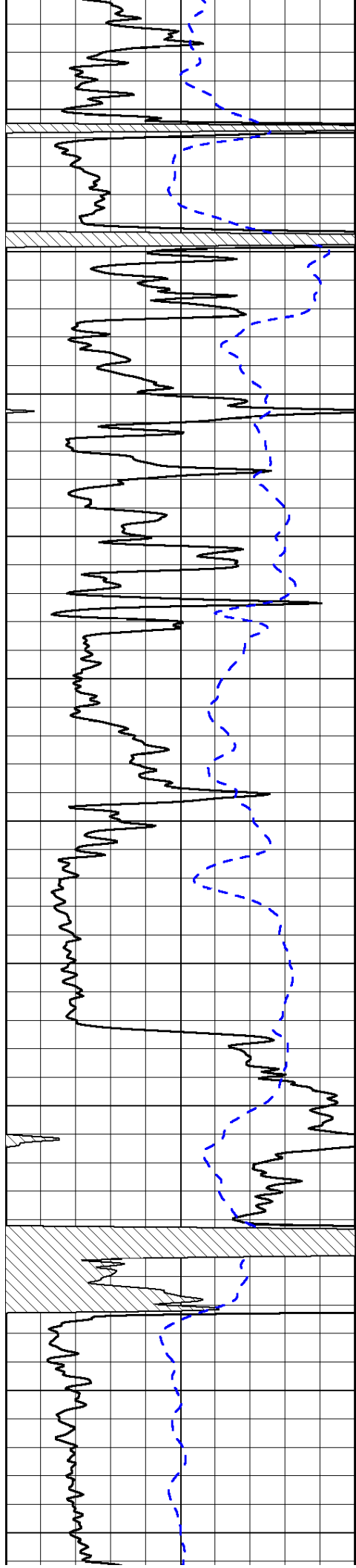


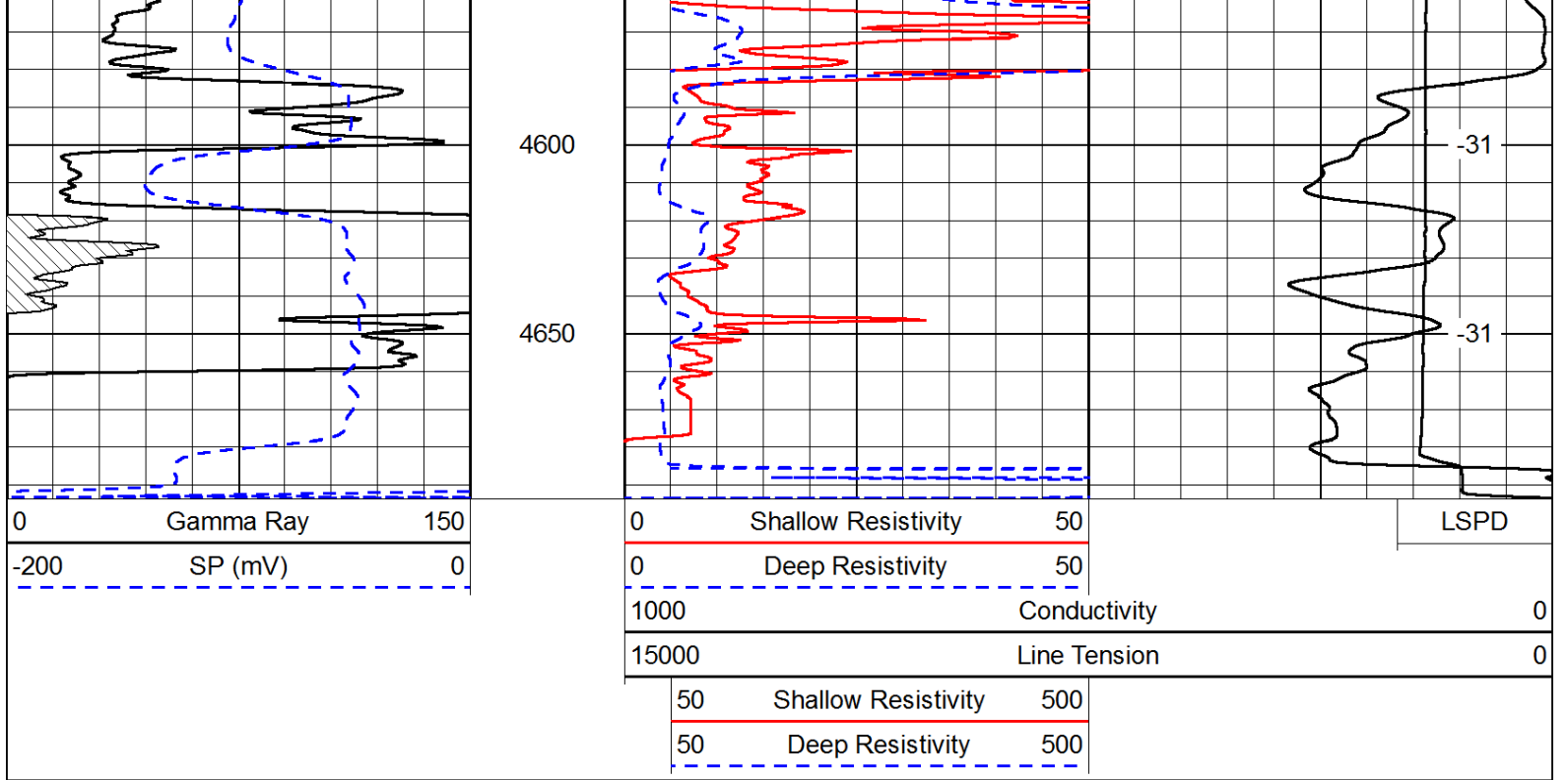




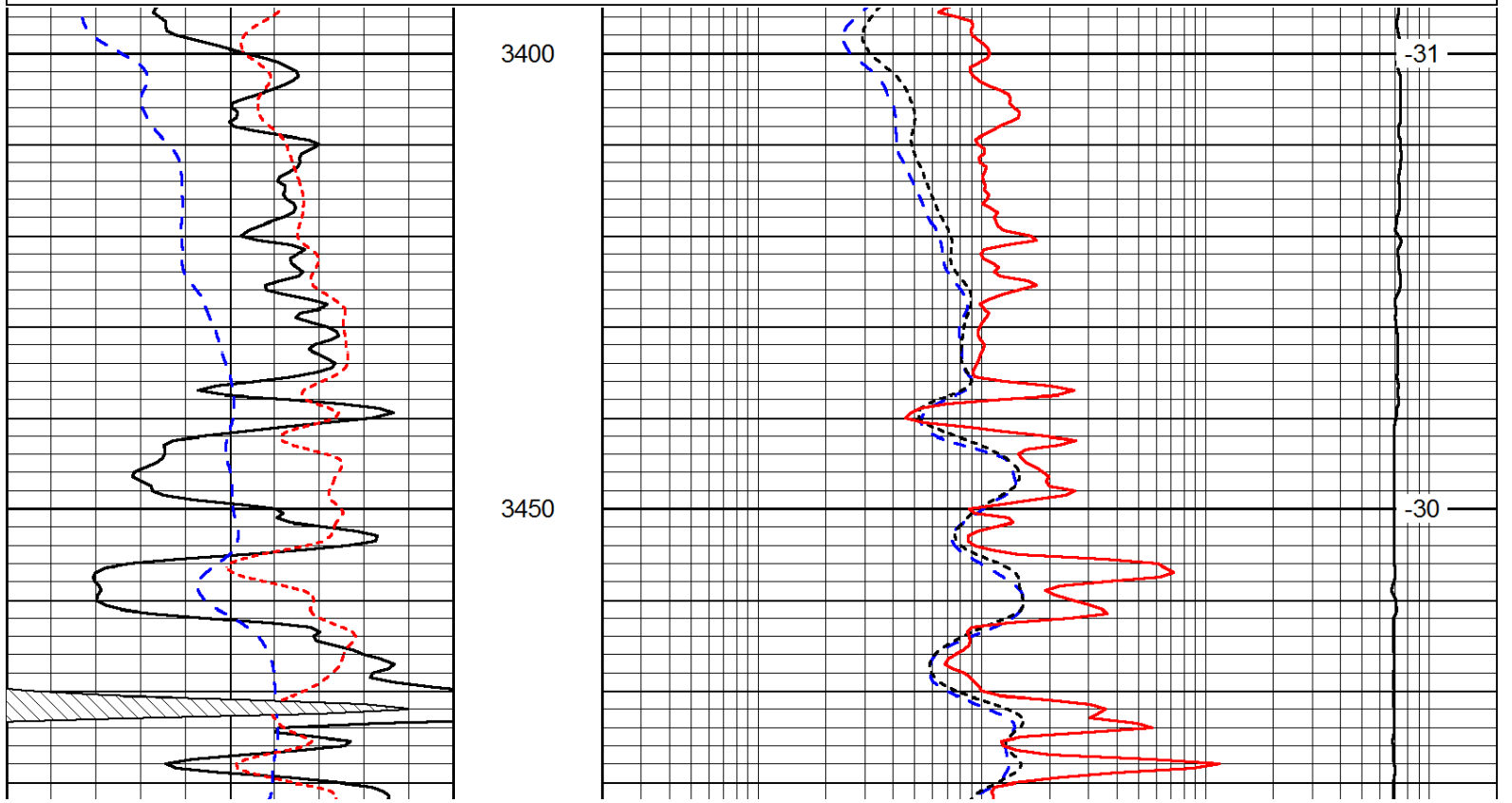
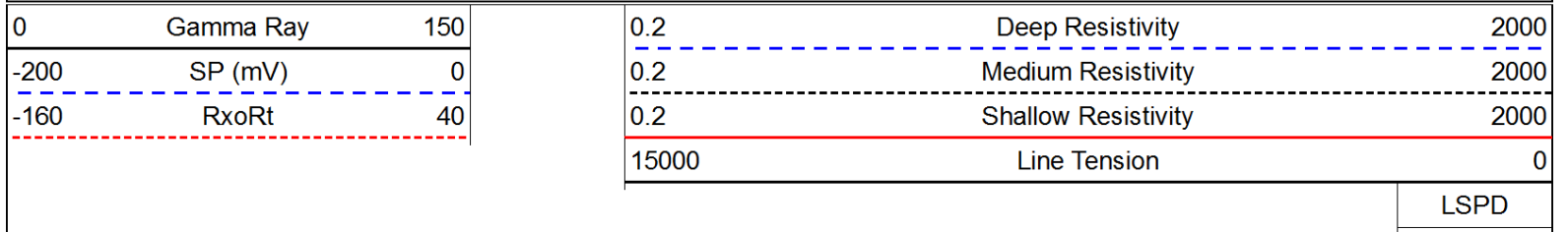


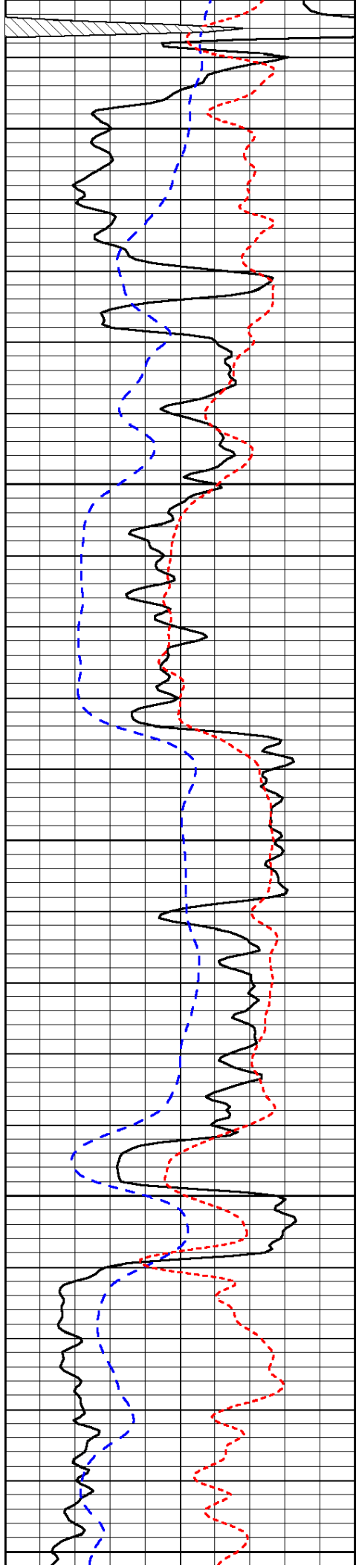






Database File: c:\warrior\data\dixon energy_clarke #1\dixon_clarke_1hd.db
 Dataset Pathname: DIL/dixstk2
 Presentation Format: dil
 Dataset Creation: Tue Oct 29 12:41:43 2013
 Charted by: Depth in Feet scaled 1:240





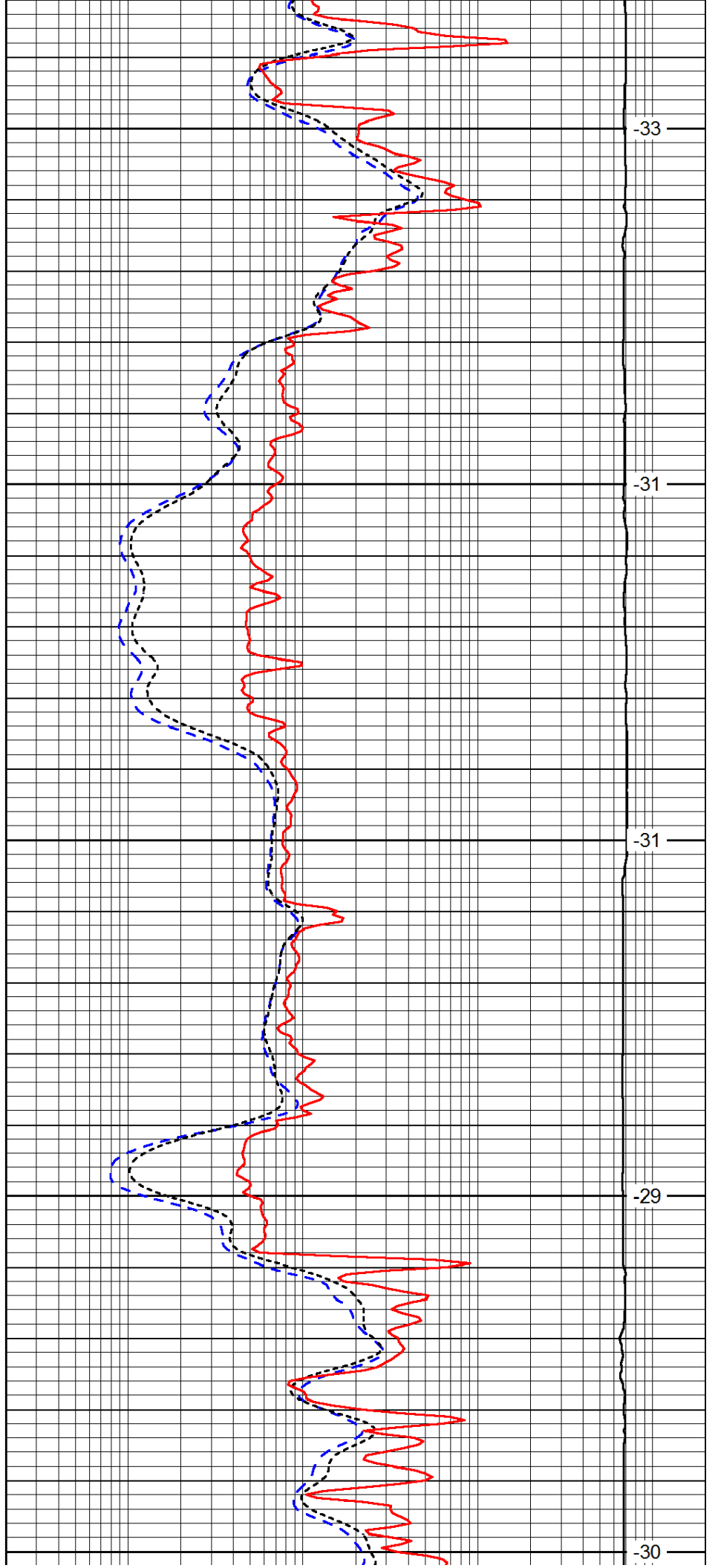
3500

3550

3600

3650

3700



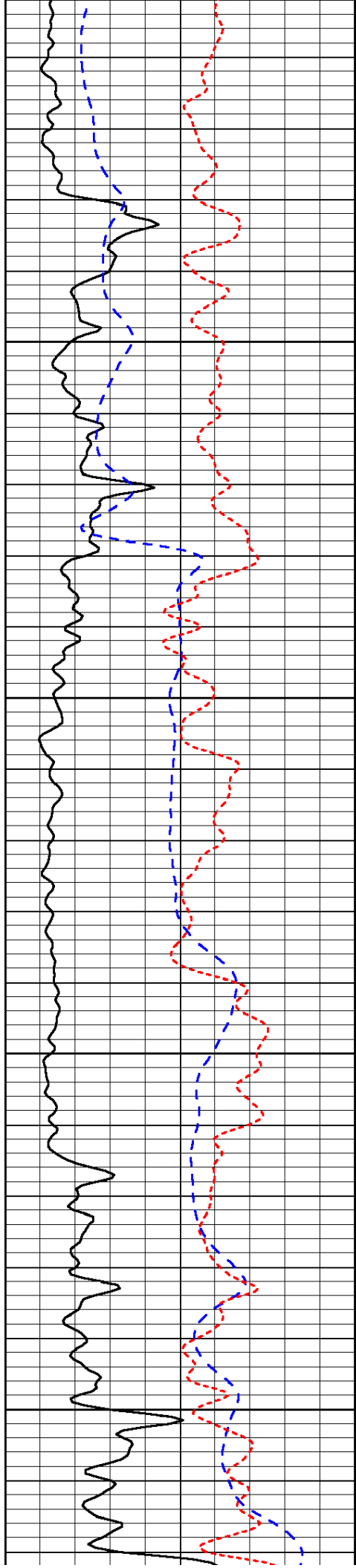
-33

-31

-31

-29

-30

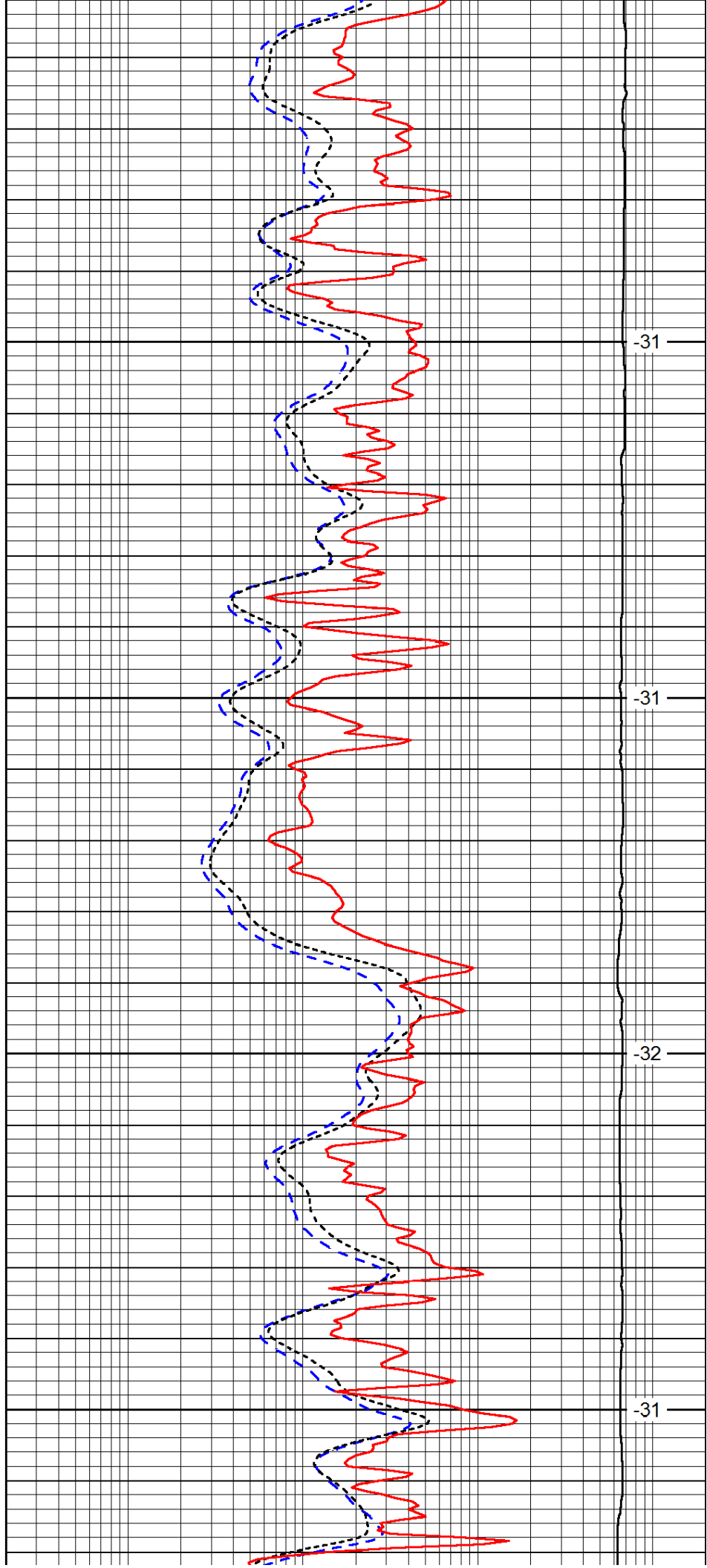


3750

3800

3850

3900

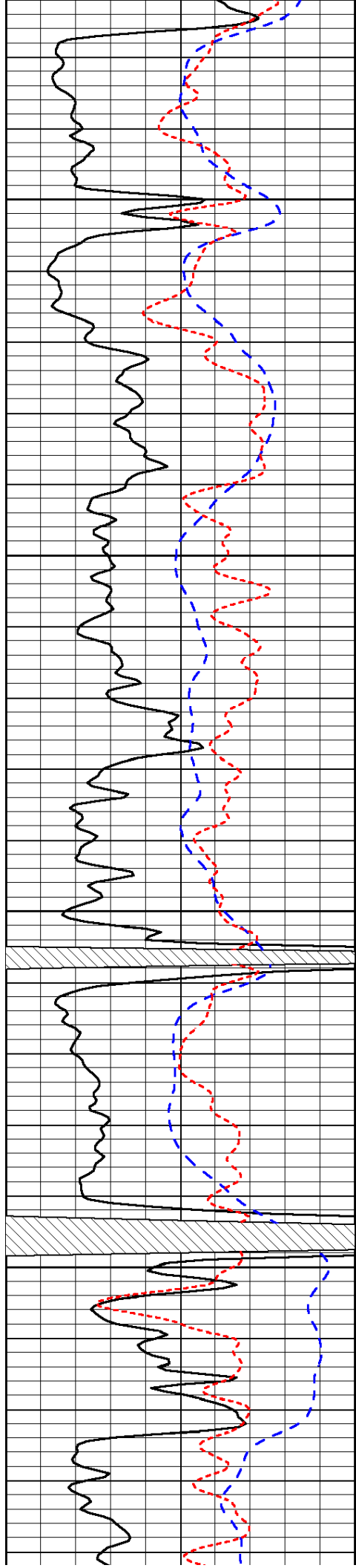


-31

-31

-32

-31

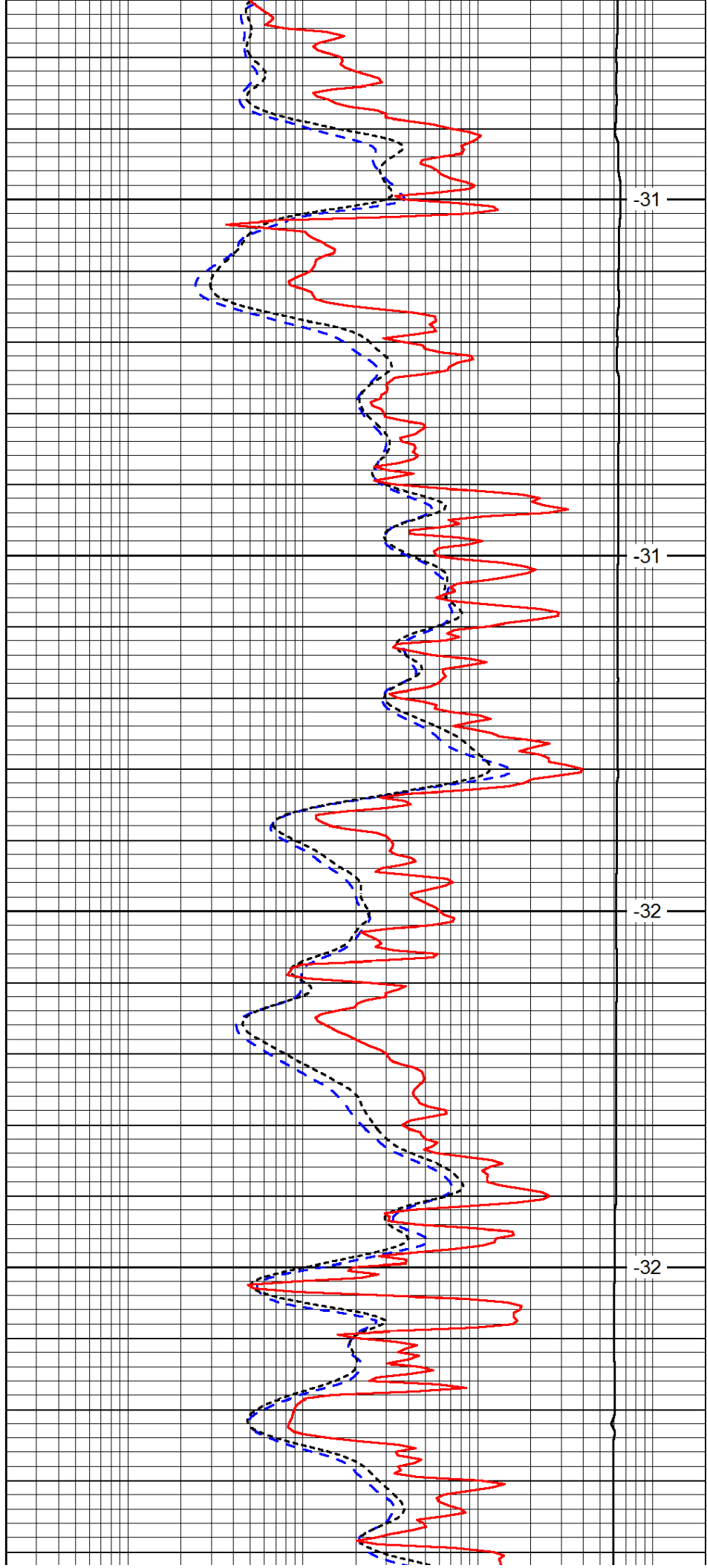


3950

4000

4050

4100

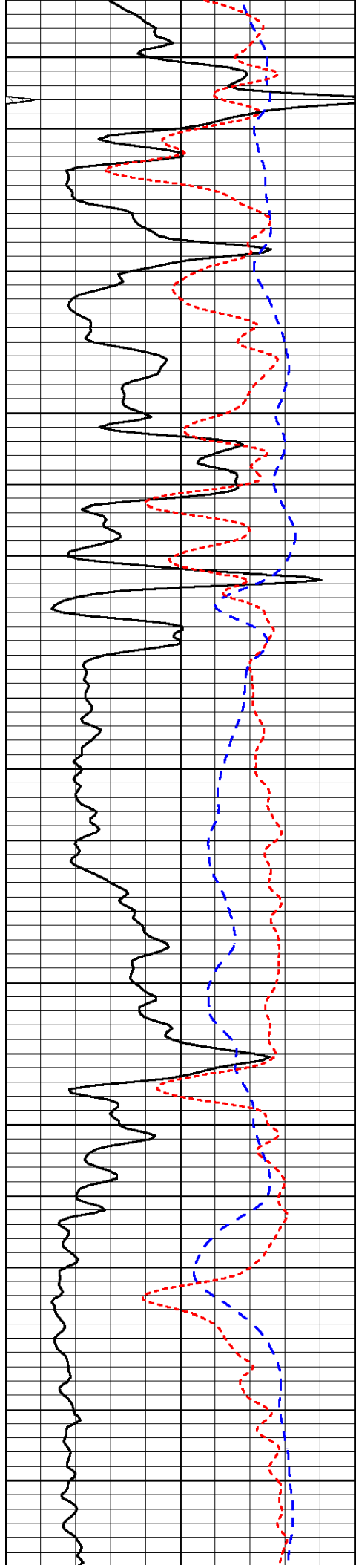


-31

-31

-32

-32



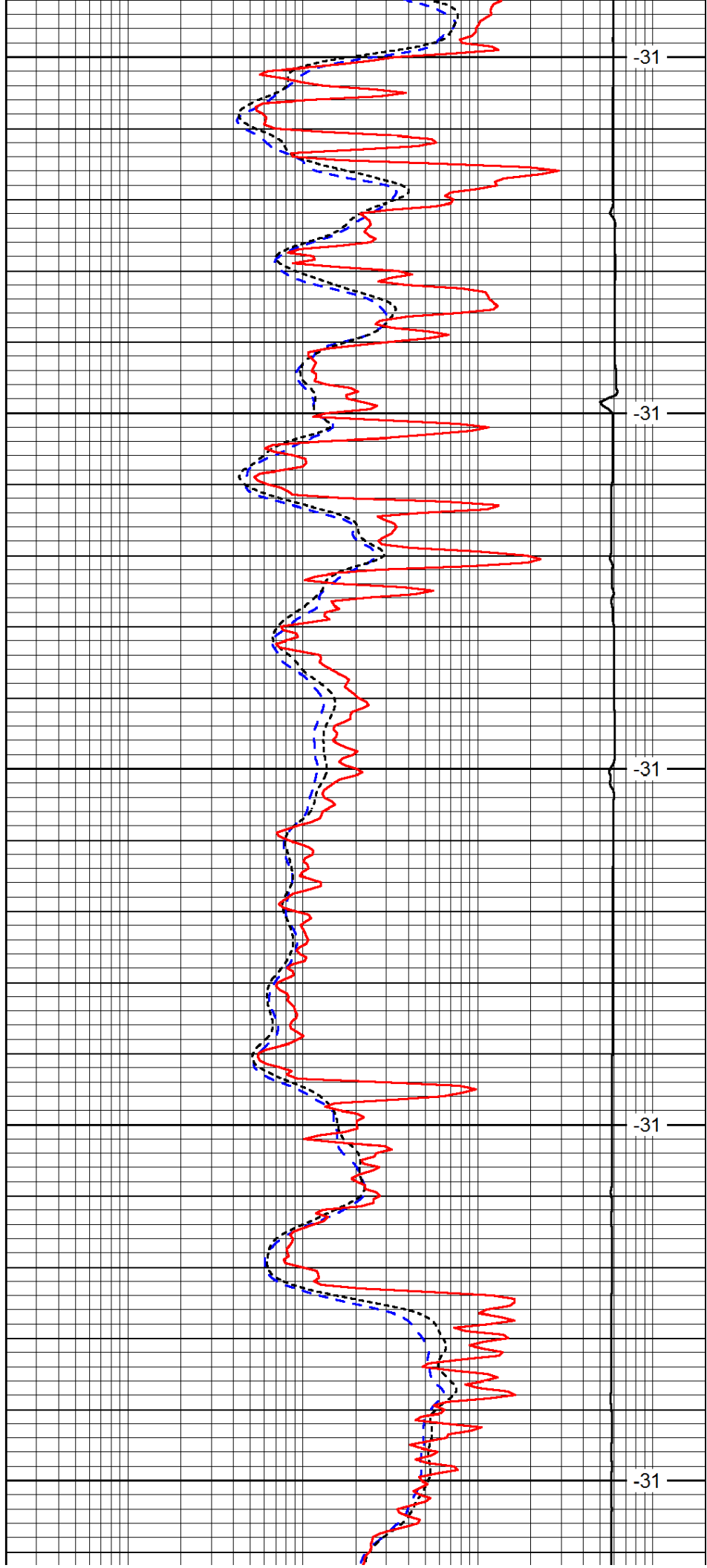
4150

4200

4250

4300

4350



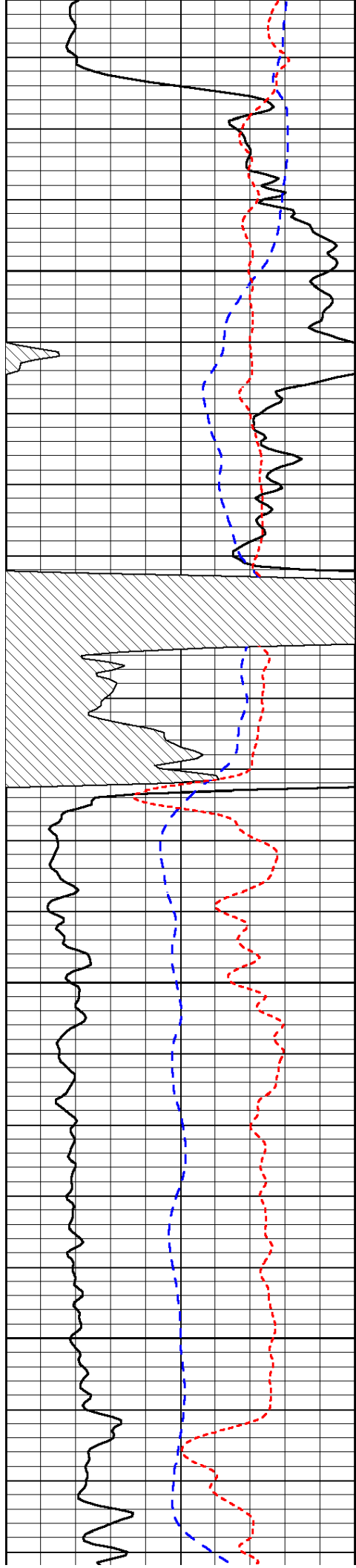
-31

-31

-31

-31

-31

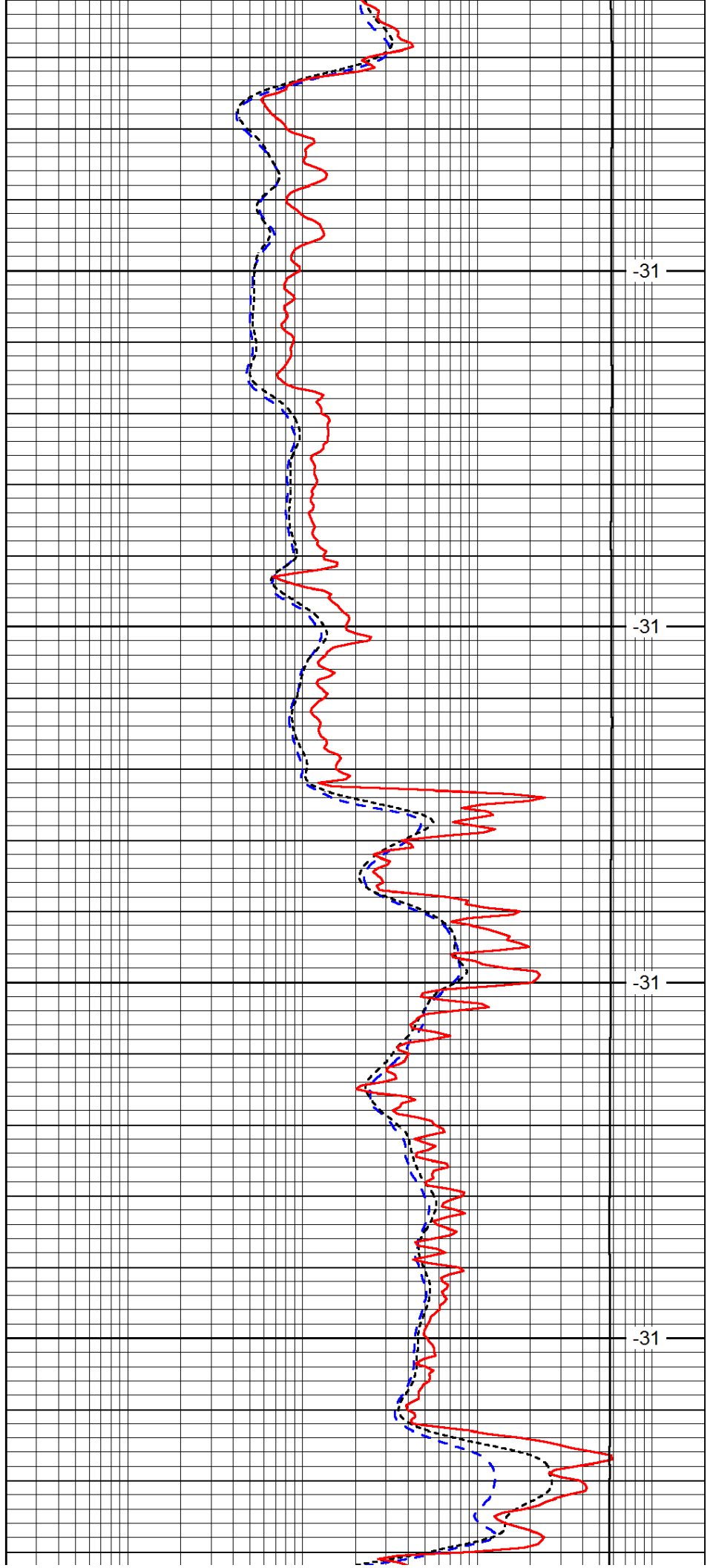


4400

4450

4500

4550

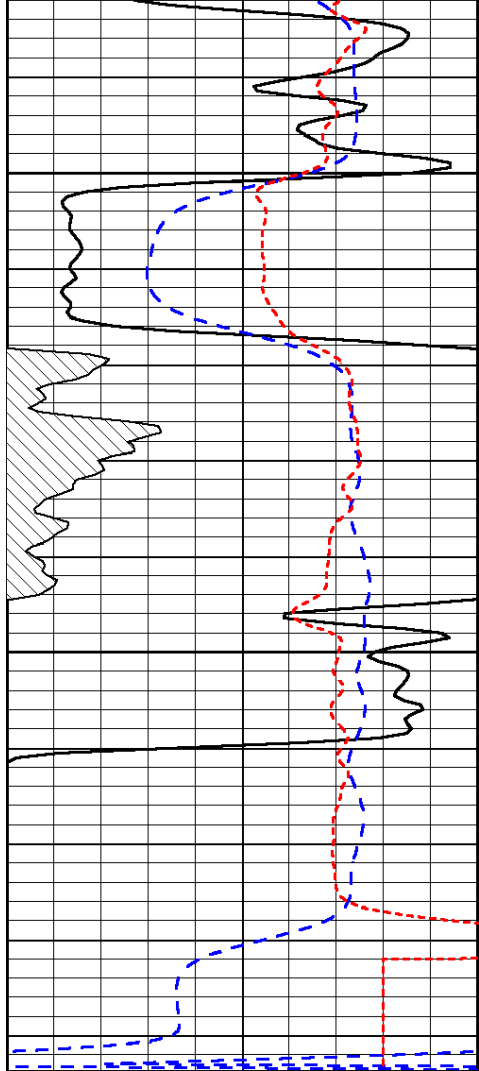


-31

-31

-31

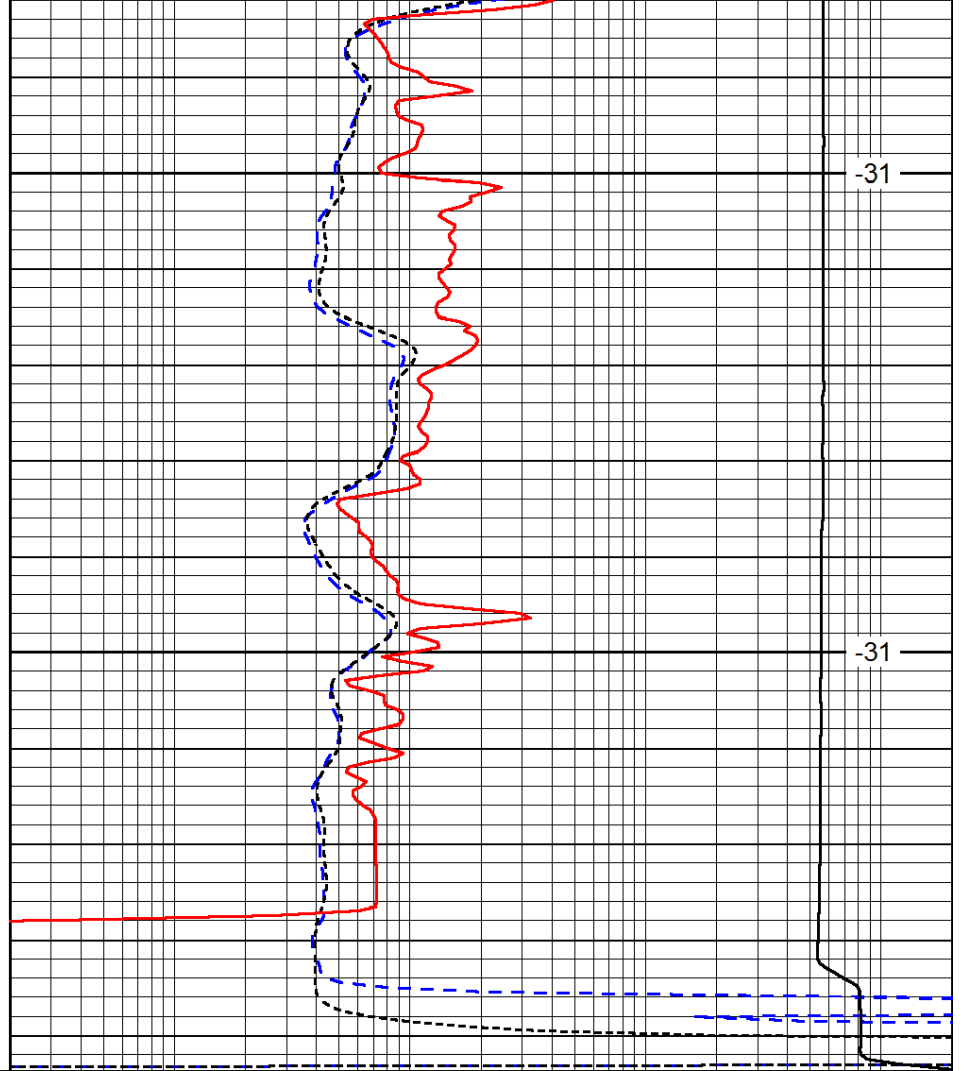
-31



4600

4650

0	Gamma Ray	150
-200	SP (mV)	0
-160	RxoRt	40



-31

-31

0.2	Deep Resistivity	2000
0.2	Medium Resistivity	2000
0.2	Shallow Resistivity	2000
15000	Line Tension	0

LSPD