



MIDWEST SURVEYS
 LOGGING - PERFORATING - CONSULTING SERVICES
 P. O. Box 68, Osawatomie, KS 68084
 913 / 755 - 2128

GAMMA RAY / NEUTRON / CCL

Company: Area Management Corporation
 Well: Longanecker No. L-1
 Field: Longanecker
 County: Johnson State: Kansas

Location: 5080' FSL & 3550' FEL
 NE-NW-NE-NW

Sec. 30 Type: 14S Rigs: 22e
 Permanent Datum: GL Elevation: NA
 Log Measured From: GL
 Drilling Measured From: GL

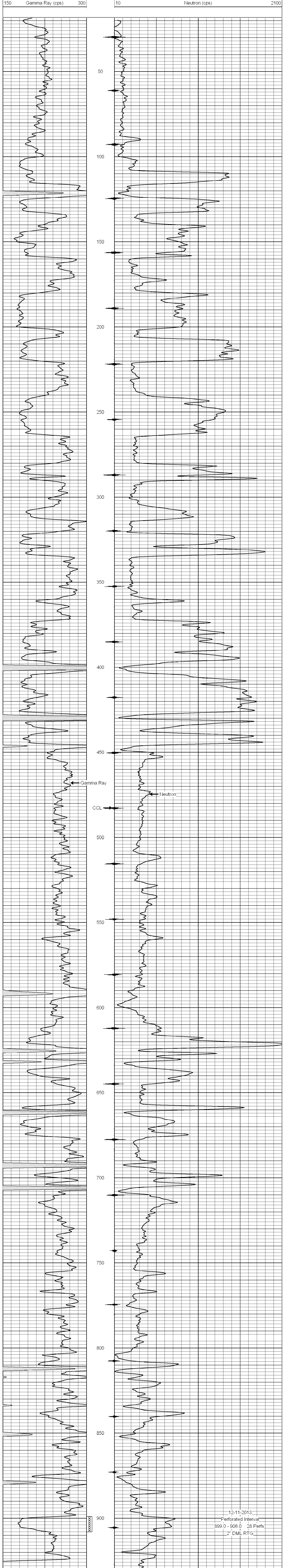
Date: 12-11-2013
 Run Number: One
 Depth Driller: 950.0
 Depth Logger: 933.0
 Bottom Logged Interval: 933.0
 Top Log Interval: 20.0
 Fluid Level: Full

BORE-HOLE RECORD		CASING RECORD			
RUN No.	BIT	FROM	TO	FROM	TO
One	9.875"	0.0	139.0	0.0	109.0
Two	5.625"	109.0	930.0	2.875"	6.5#
					440.0

<<< Fold Here >>>
 All interpretations are opinions based on inferences from electrical or other measurements and we cannot and do not guarantee the accuracy or correctness of any interpretation, and we shall not, except in the case of gross or willful negligence on our part, be liable or responsible for any loss, costs, damages, or expenses incurred or sustained by anyone resulting from any interpretation made by any of our officers, agents or employees. These interpretations are also subject to our general terms and conditions set out in our current Price Schedule.

Comments
 Drilling Contractor :
 Evans Energy & Development, Inc.

Database File: longanecker11.db
 Dataset Pathname: pass1
 Presentation Format: gr-n-ccl
 Dataset Creation: Wed Dec 11 12:00:12 2013 by Log SCH 111116
 Charted by: Depth in Feet scaled 1:240



12-11-2013
 Perforated Interval
 899.0 - 908.0 28 Perfs
 2' DML RTG