



Pioneer Energy Services

Dual Induction Log

15-007-24,139-00-00

API No.

Company **LB Exploration, Inc.**

Well **Boyd #2**

Field

County **Barber** State **Kansas**

Location

**SE NW NW NW
405' FNL & 485' FWL**

Other Services
CNL/CDL
MEL/BHCS

Sec: **34** Twp: **32S** Rge: **13W**

Permanent Datum **Ground Level** Elevation **1758**
Log Measured From **Kelly Bushing** 13 Ft. Above Perm. Datum
Drilling Measured From **Kelly Bushing**

Elevation

K.B. 1771

D.F. 1758

Date **3/9/2014**

Run Number **One**

Depth Driller **5120**

Depth Logger **5122**

Bottom Logged Interval **5121**

Top Log Interval **350**

Casing Driller **8.625 @ 353**

Casing Logger **350**

Bit Size **7.875**

Type Fluid in Hole **Chemical**

Salinity,ppm CL **7000**

Density / Viscosity **9.5 56**

pH / Fluid Loss **8.5 10.8**

Source of Sample **Flowline**

Rm @ Meas. Temp **.70 @ 70**

Rmf @ Meas. Temp **.53 @ 70**

Rmc @ Meas. Temp **.95 @ 70**

Source of Rmf / Rmc **Charts**

Rm @ BHT **.39 @ 127**

Operating Rig Time **5 Hours**

Max Rec. Temp. F **127**

Equipment Number **108**

Location **Hays**

Recorded By **J. Long**

Witnessed By **Steven Petermann**

<<< Fold Here >>>

All interpretations are opinions based on inferences from electrical or other measurements and we cannot and do not guarantee the accuracy or correctness of any interpretation, and we shall not, except in the case of gross or willful negligence on our part, be liable or responsible for any loss, costs, damages, or expenses incurred or sustained by anyone resulting from any interpretation made by any of our officers, agents or employees. These interpretations are also subject to our general terms and conditions set out in our current Price Schedule.

Comments

Thank you for using Pioneer Energy Services
www.pioneerenergy.com
785 625 3858

Medicine Lodge, 6 West to Bitter Creek Road, 1 1/2 South, East Into (Left @ Fork)

Database File: c:\warrior\data\lb_exp_boyd #2\lbexploration_boyd_2hd.db
Dataset Pathname: dil\lbstck
Presentation Format: dil2in
Dataset Creation: Sun Mar 09 10:26:33 2014
Charted by: Depth in Feet scaled 1:600

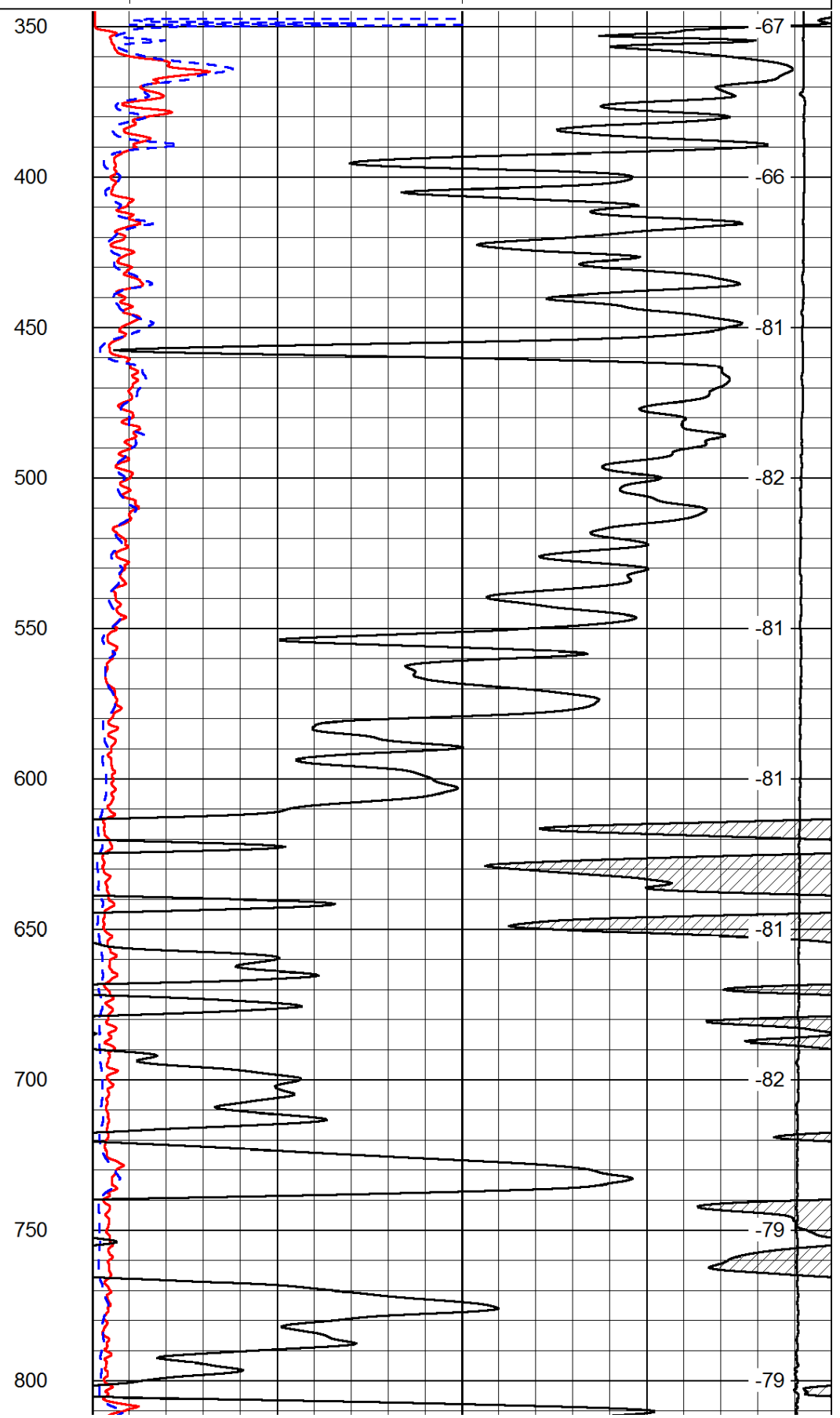
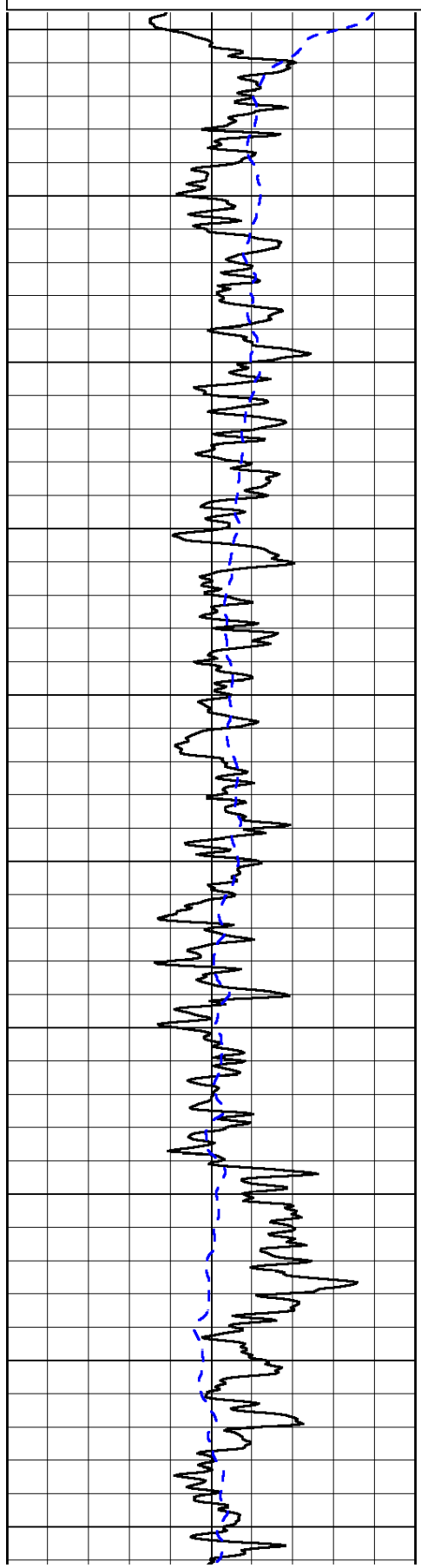
0	Gamma Ray	150
-200	SP (mV)	0

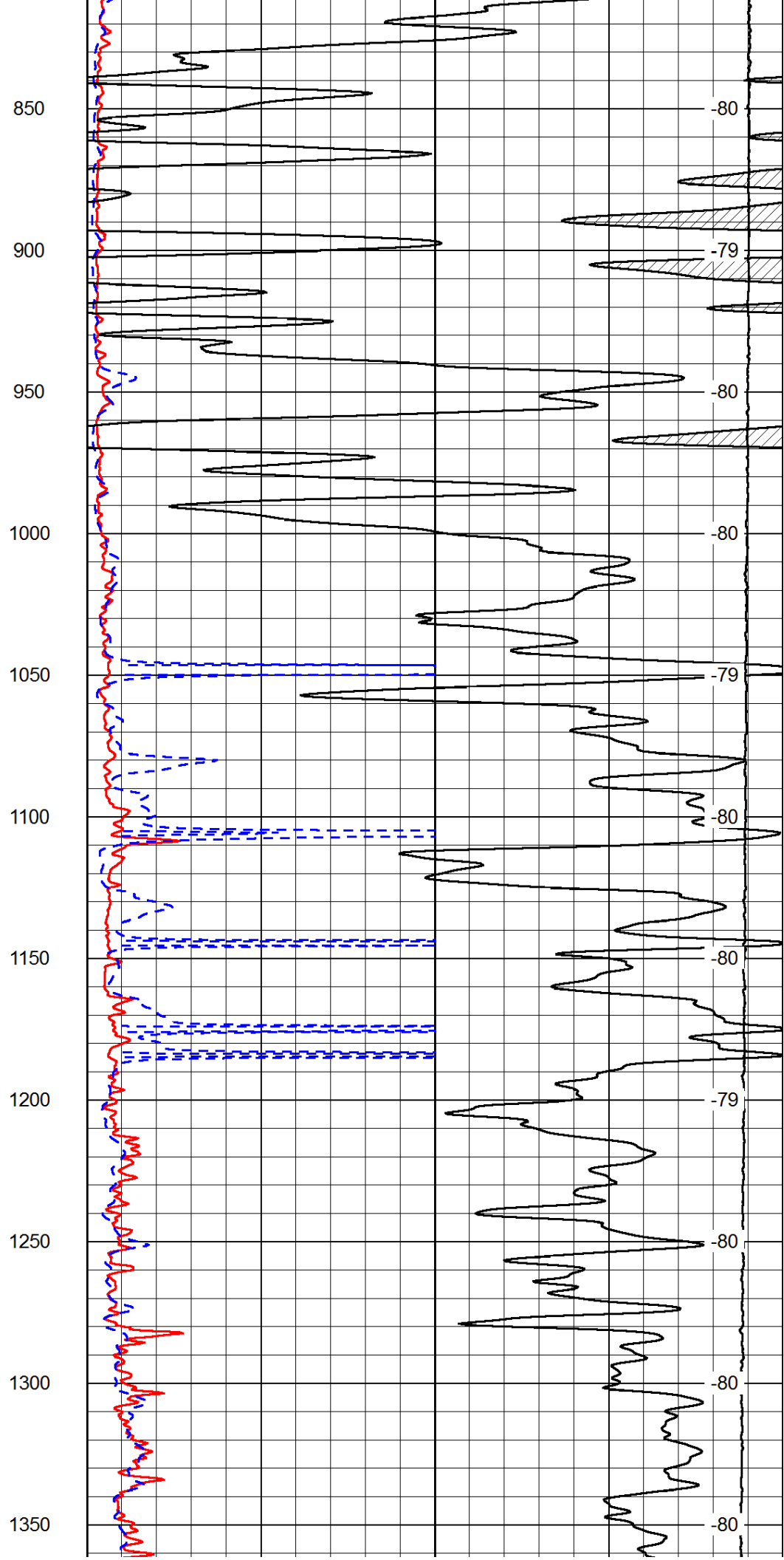
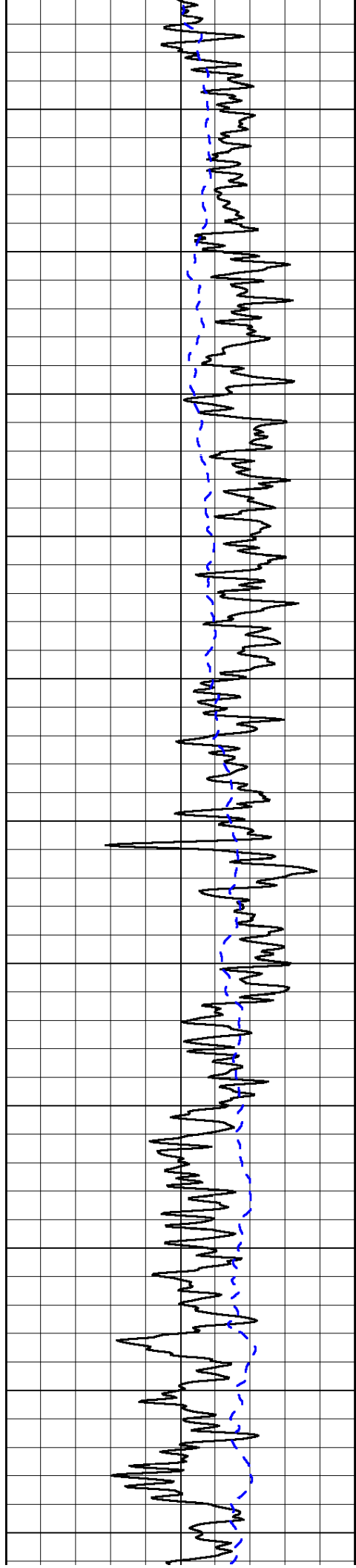
0	Shallow Resistivity	50
0	Deep Resistivity	50

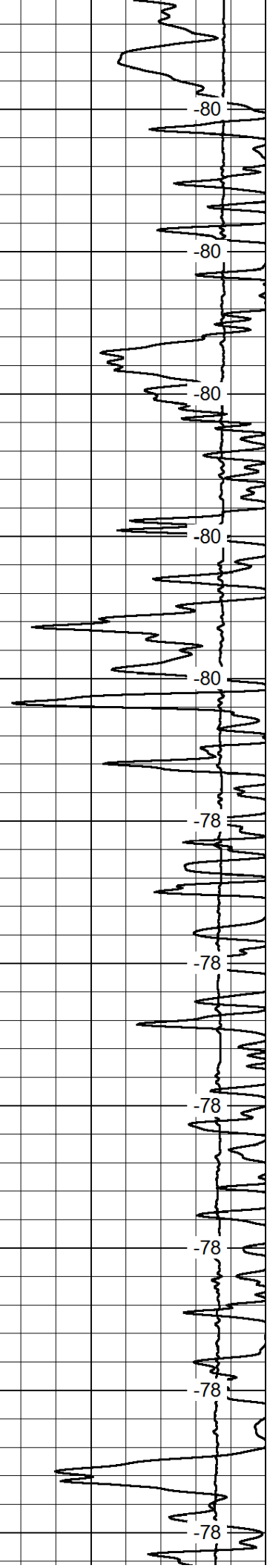
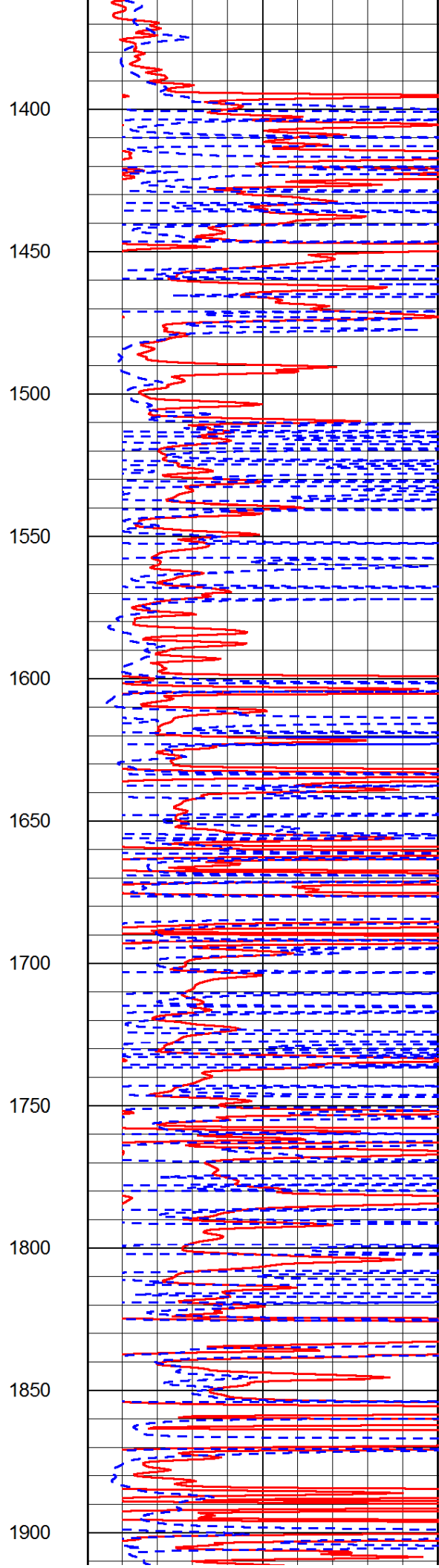
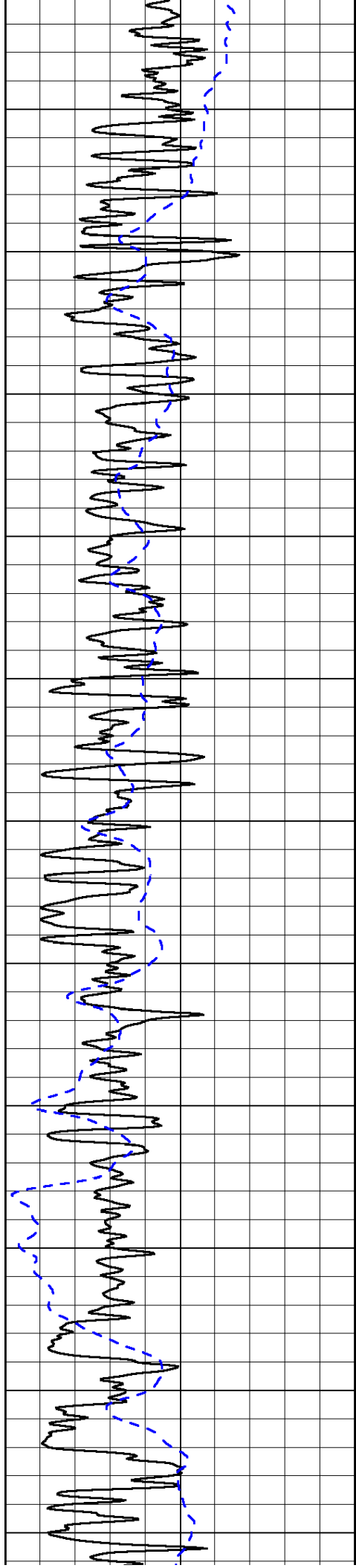
LSPD

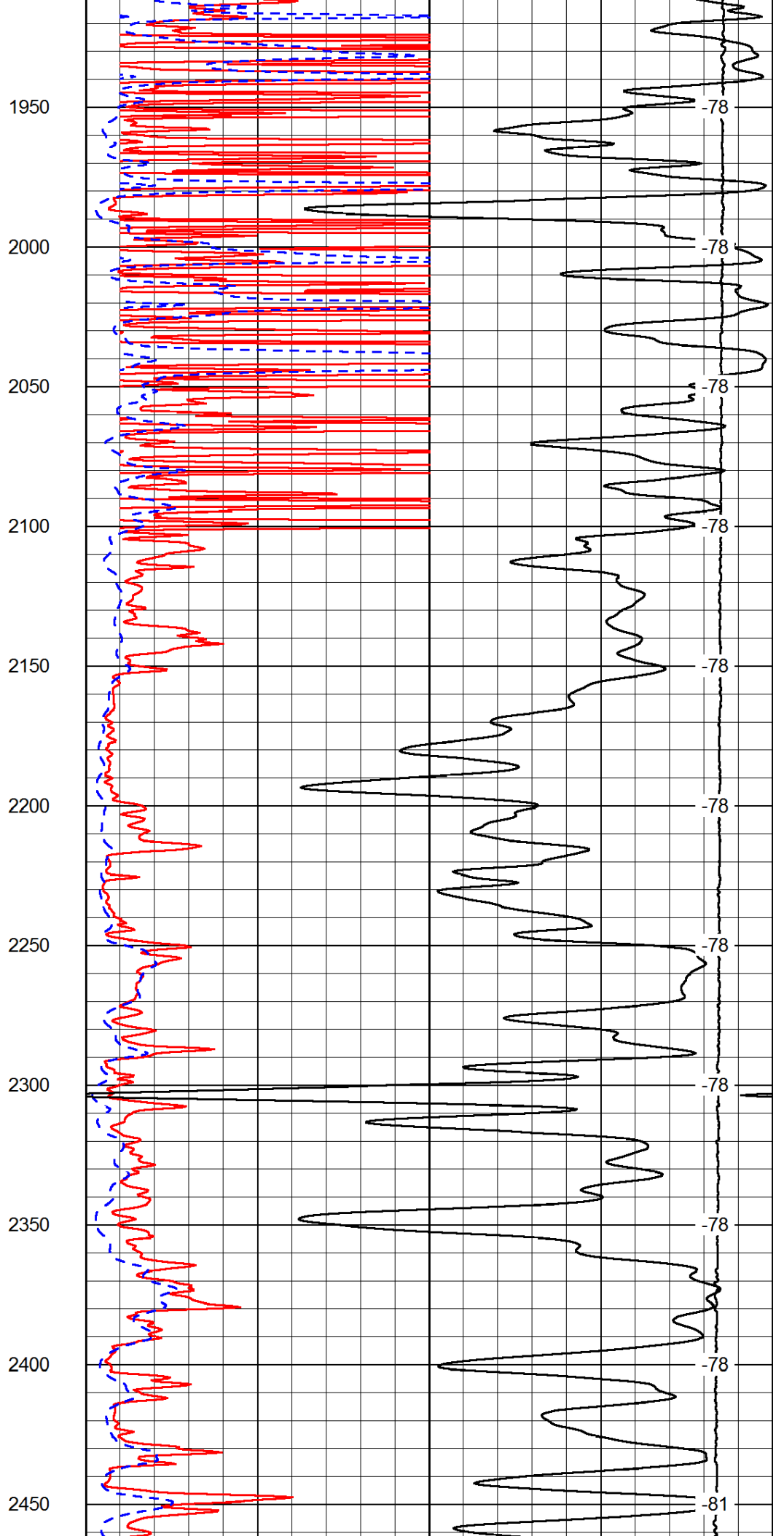
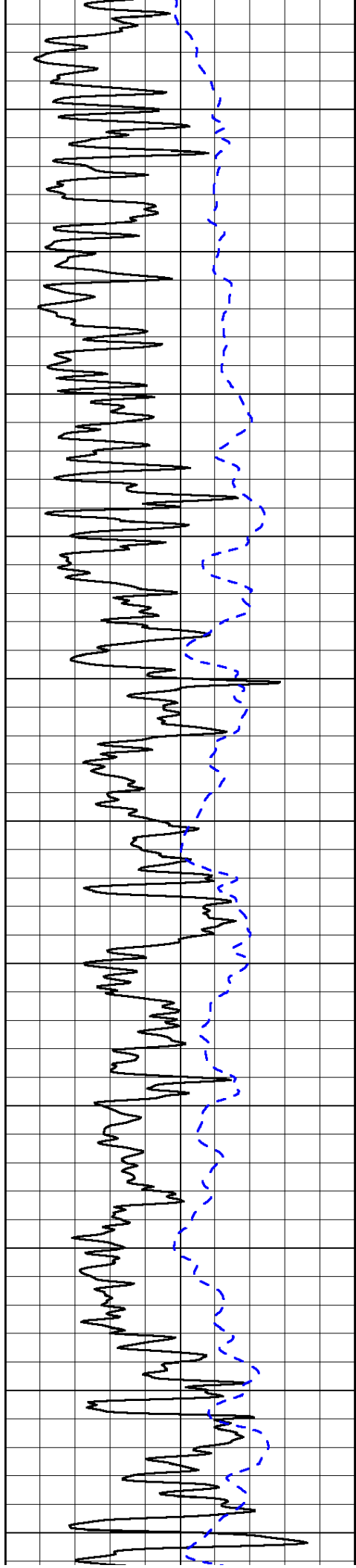
1000	Conductivity	0
15000	Line Tension	0

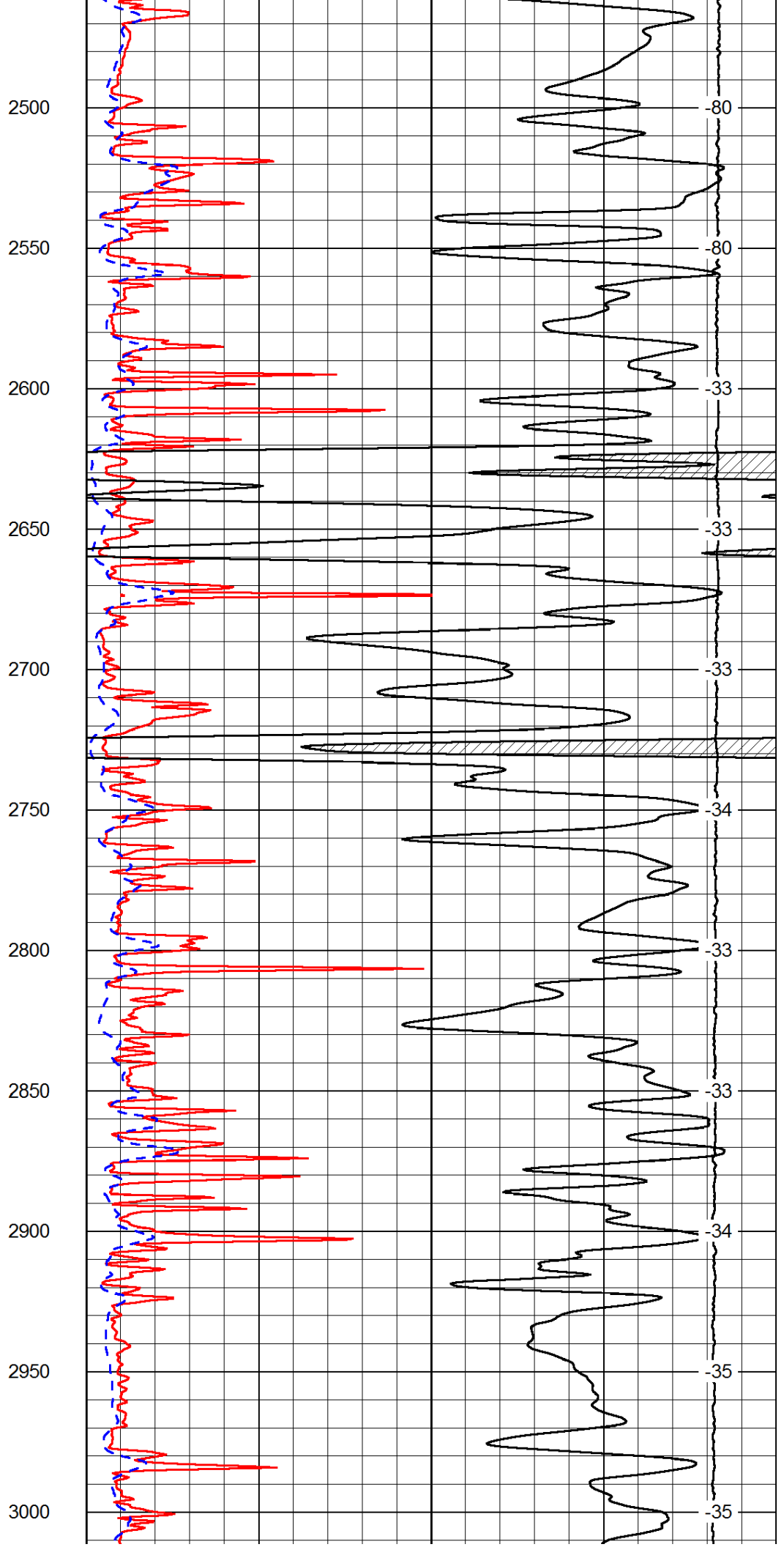
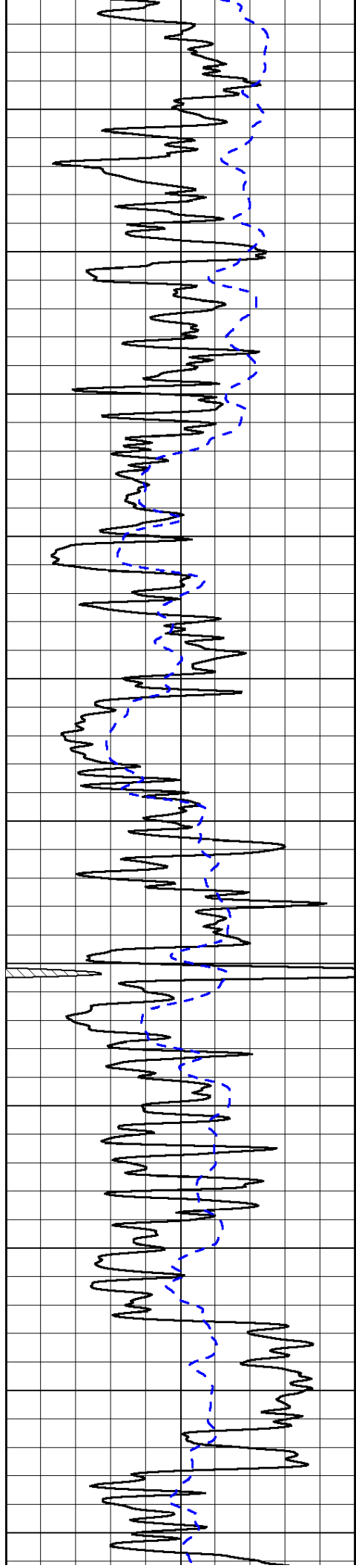
50	Shallow Resistivity	500
50	Deep Resistivity	500

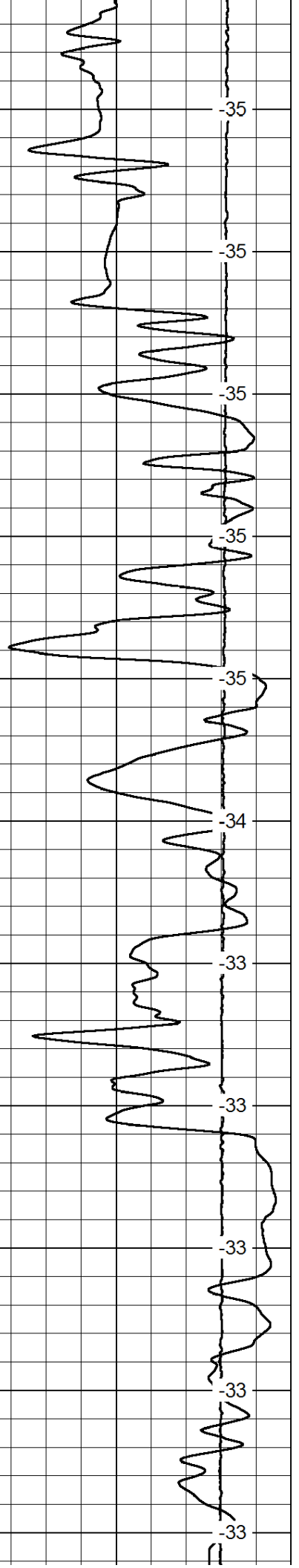
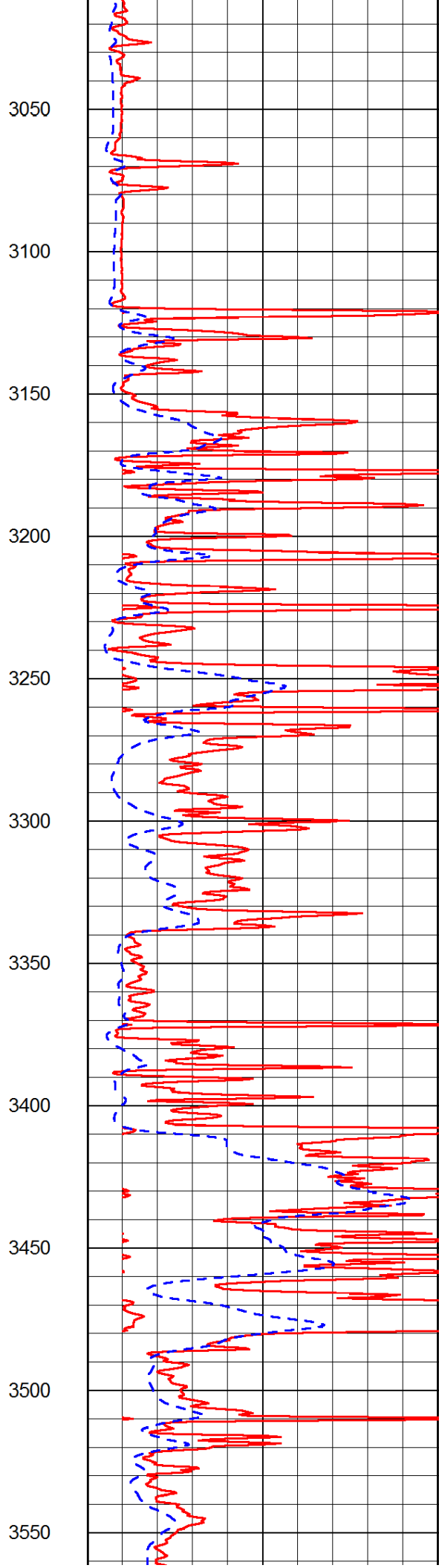
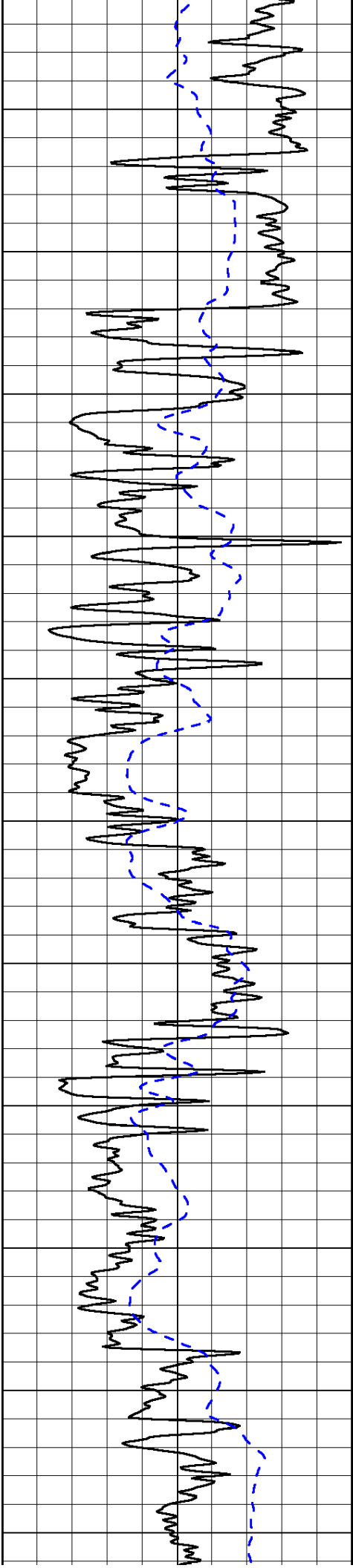


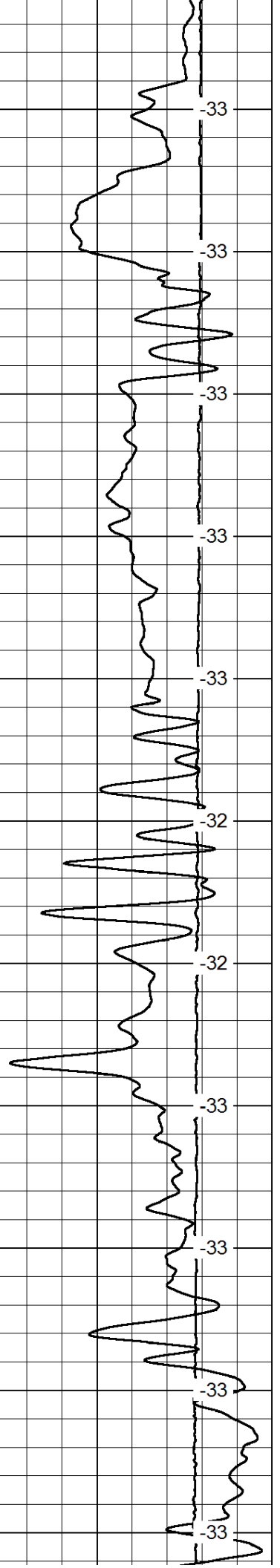
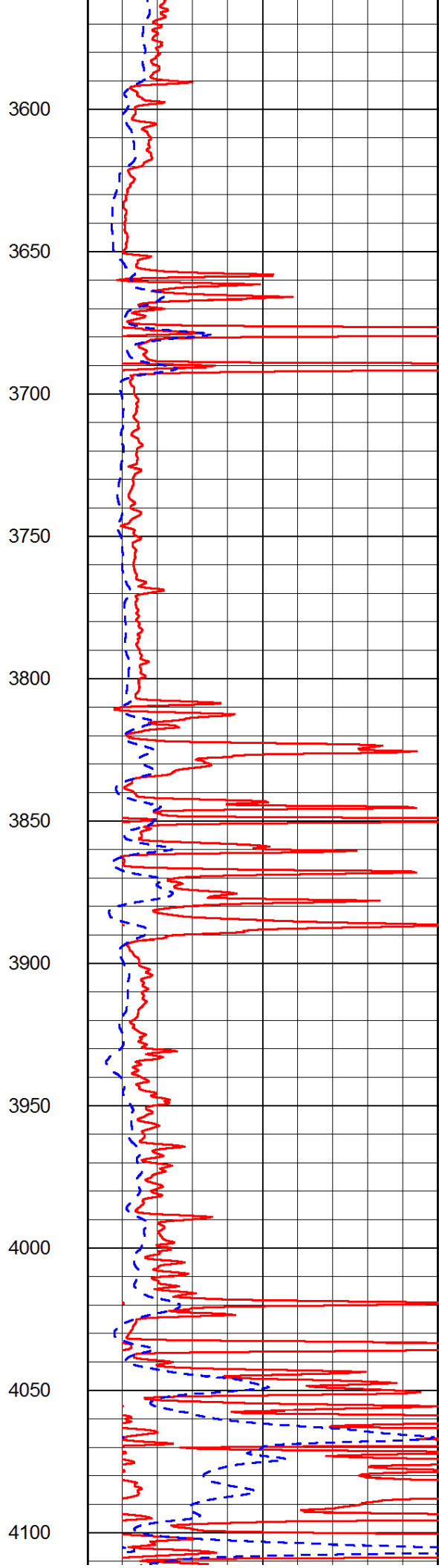
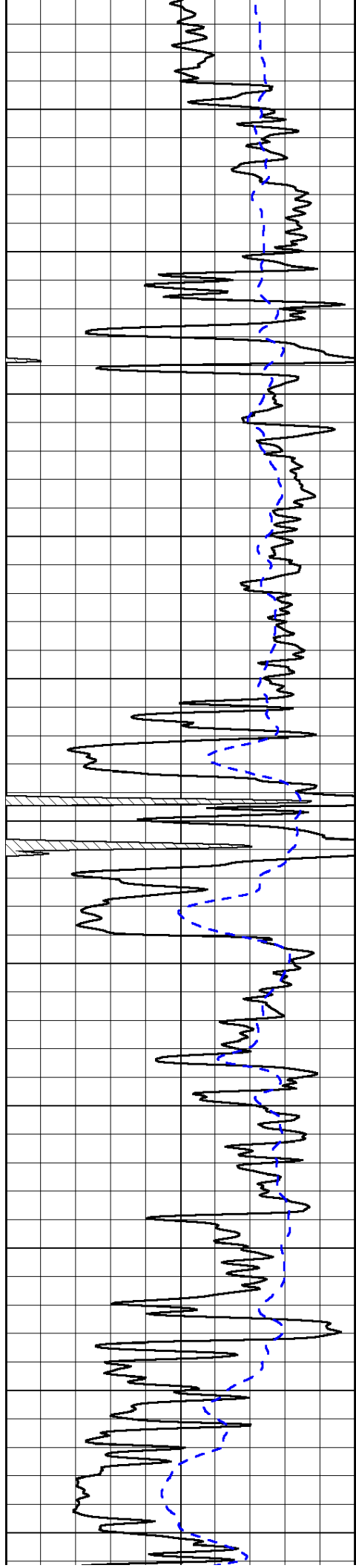


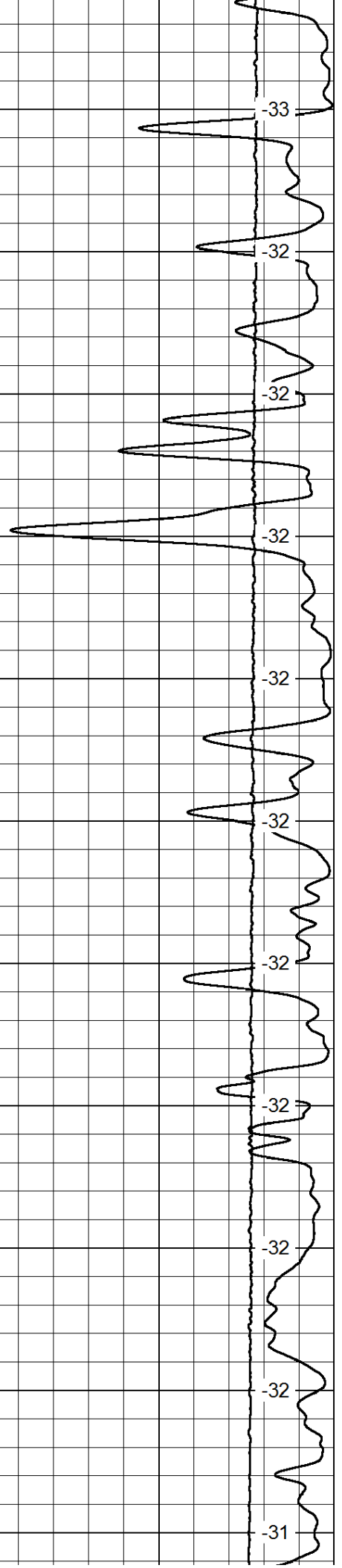
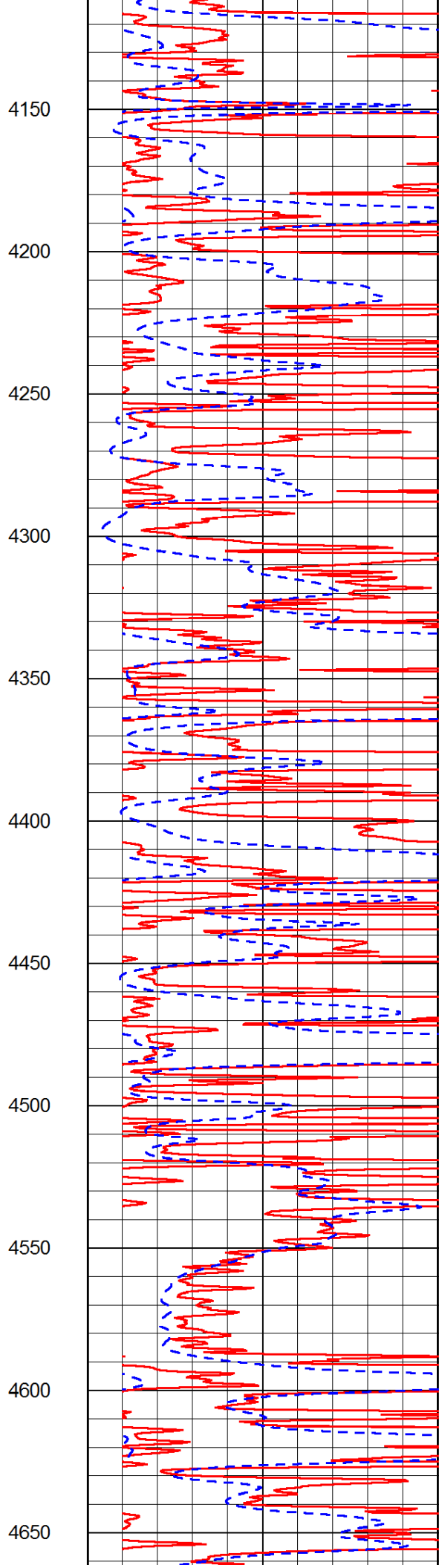
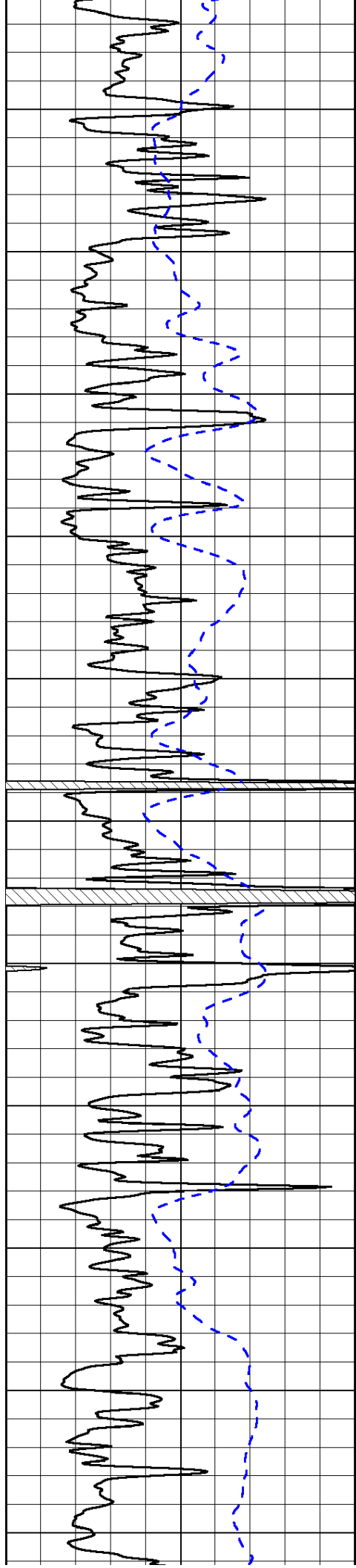


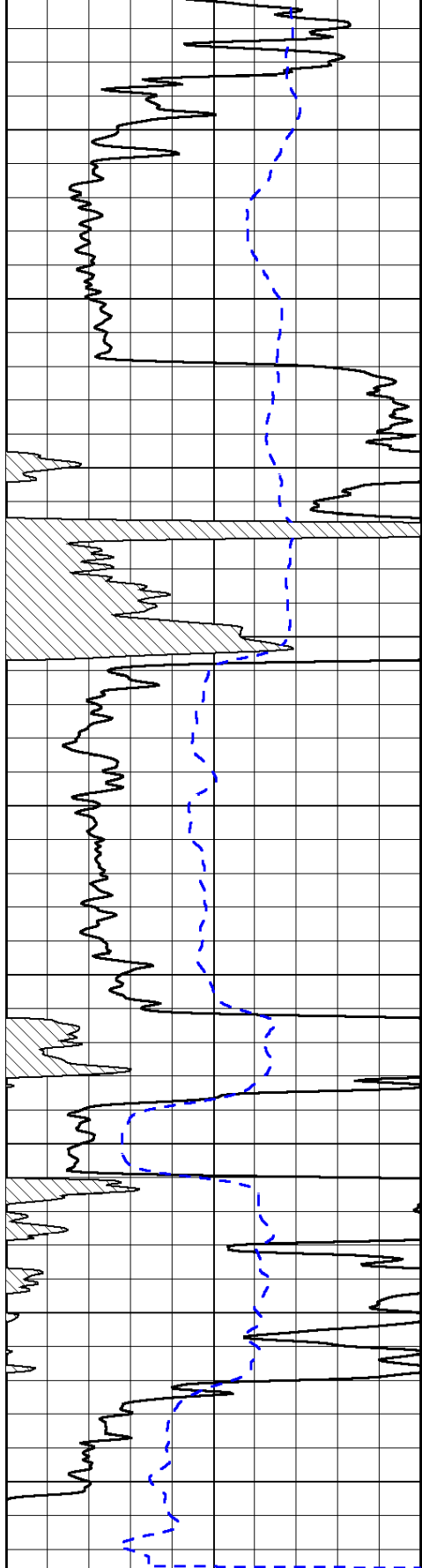






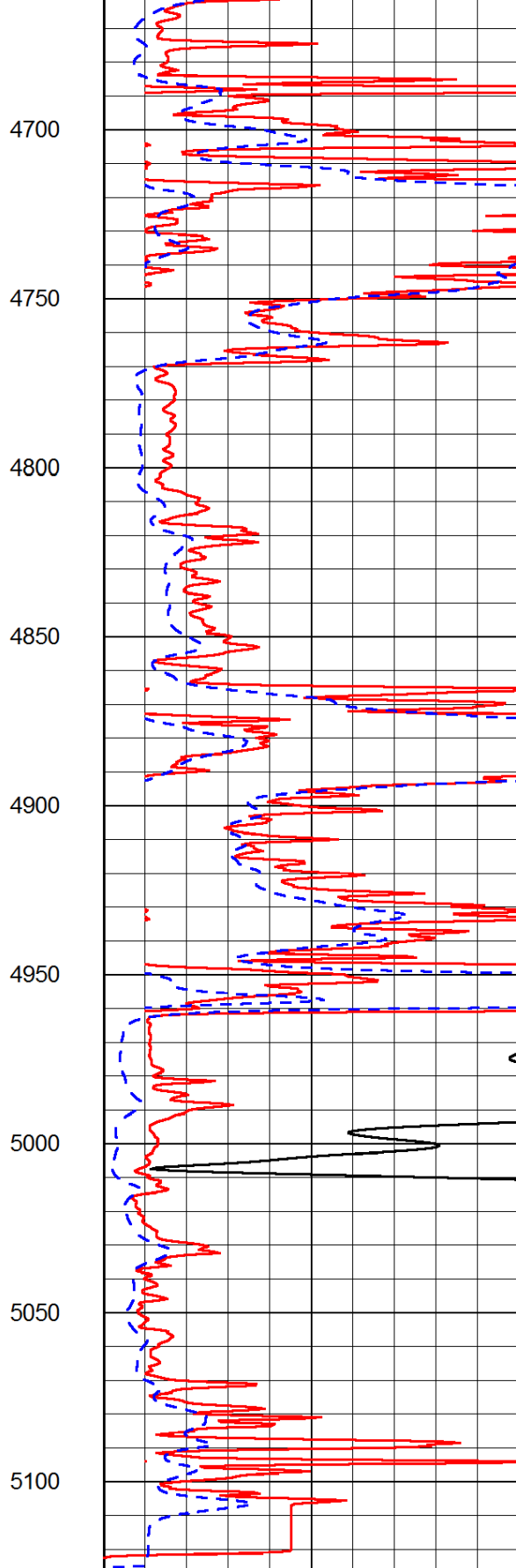






0 150

-200 0



0 50

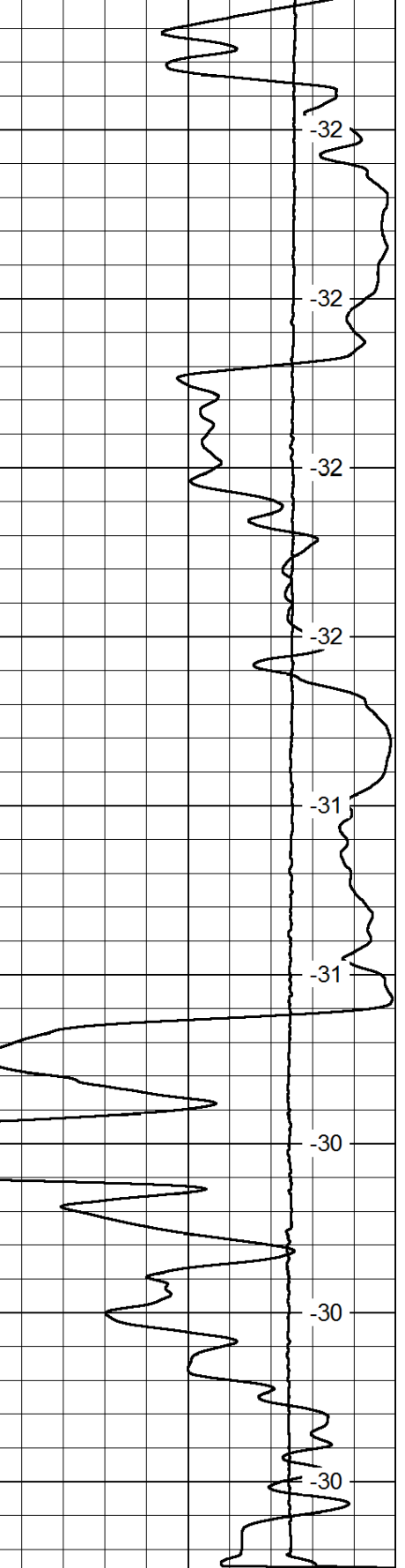
0 50

1000 Conductivity 0

15000 Line Tension 0

50 Shallow Resistivity 50

50 Deep Resistivity 50



-32

-32

-32

-32

-31

-31

-30

-30

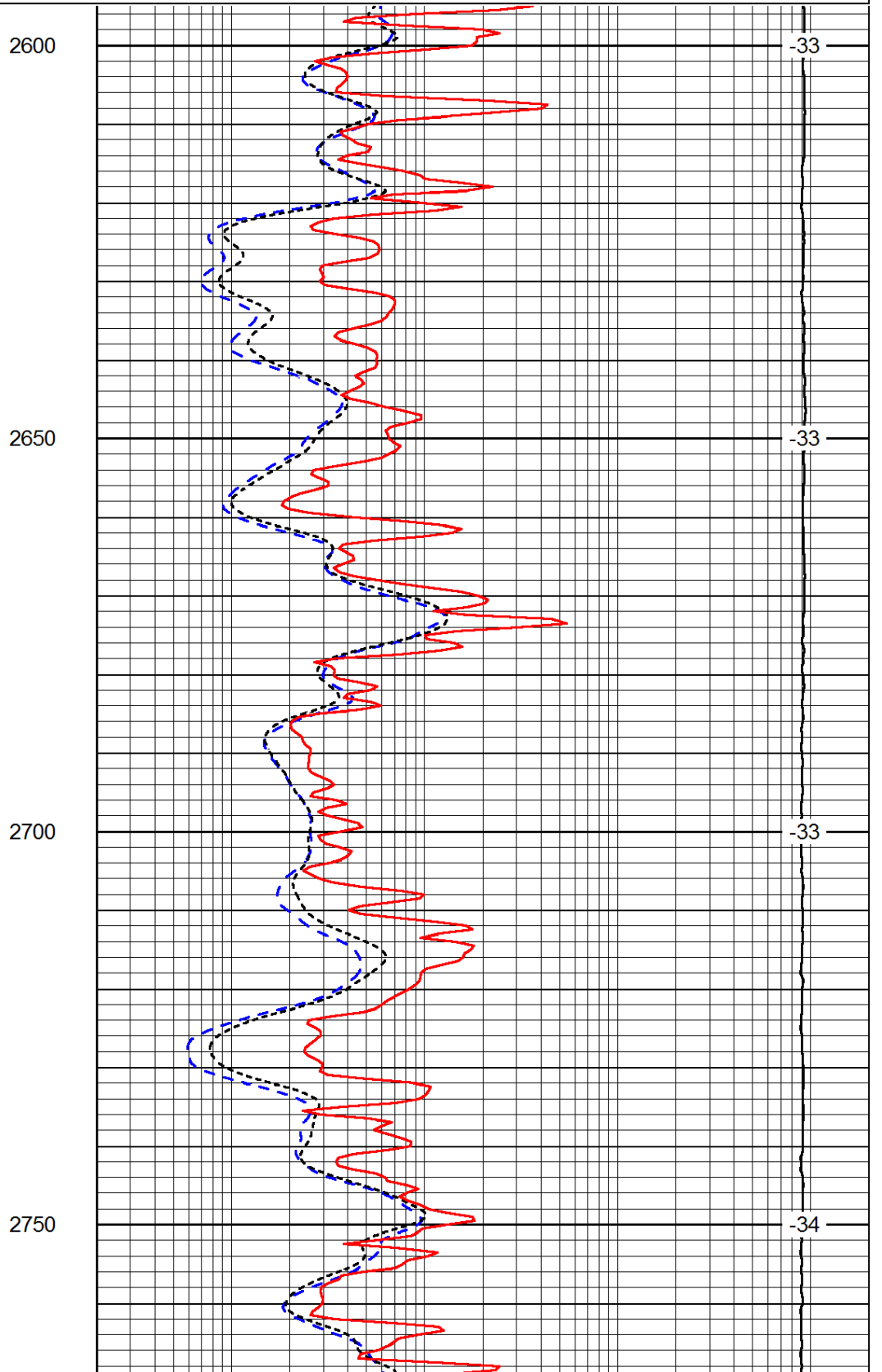
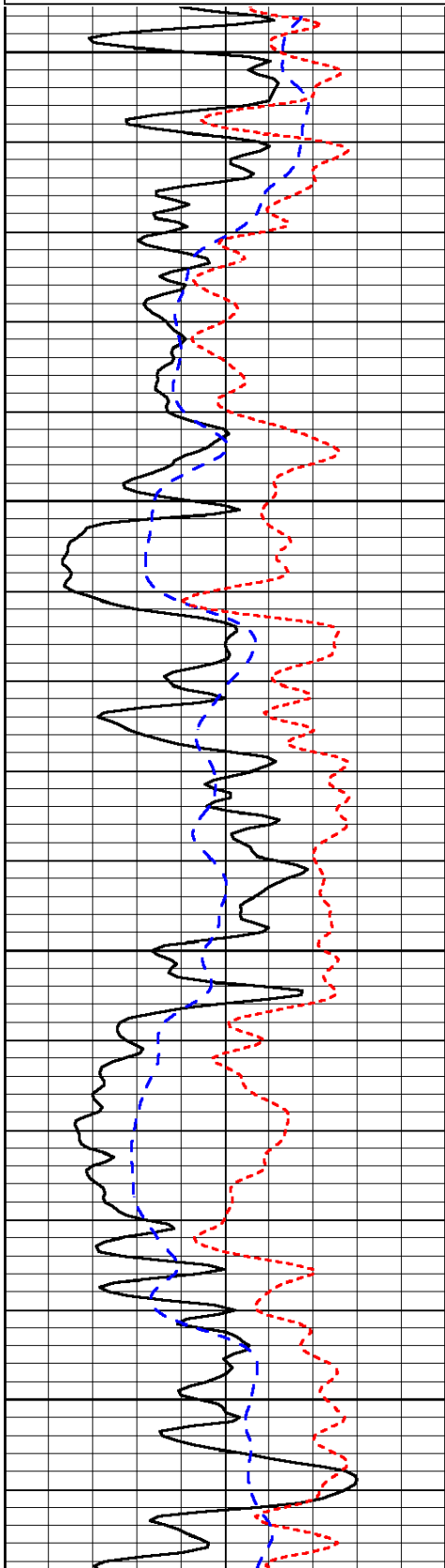
-30

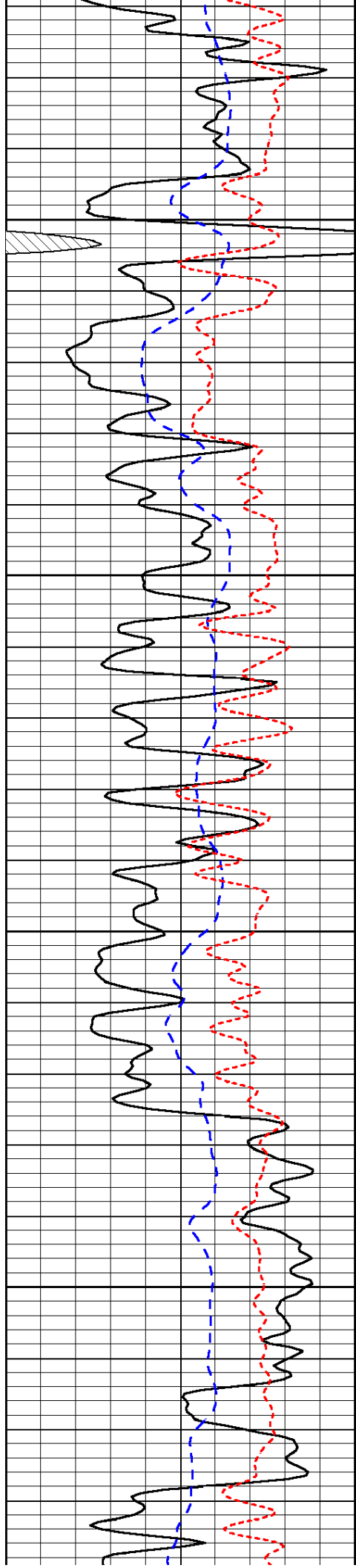
Database File: c:\warrior\data\lb exp_boyd #2\lbexploration_boyd_2hd.db
 Dataset Pathname: dil/lbstock
 Presentation Format: dil
 Dataset Creation: Sun Mar 09 10:26:33 2014
 Charted by: Depth in Feet scaled 1:240

0	Gamma Ray	150
-200	SP (mV)	0
-160	RxoRt	40

0.2	Deep Resistivity	2000
0.2	Medium Resistivity	2000
0.2	Shallow Resistivity	2000
15000	Line Tension	0

LSPD



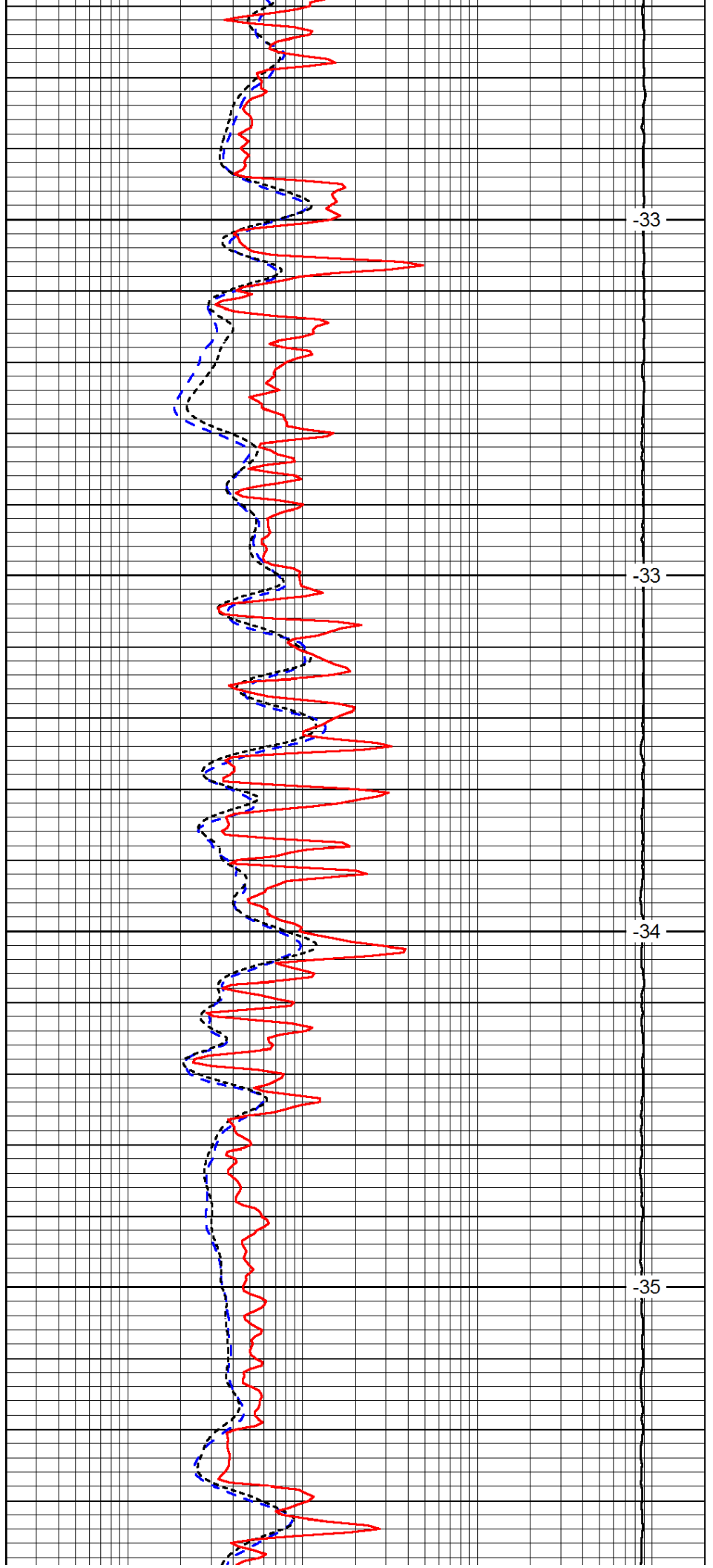


2800

2850

2900

2950

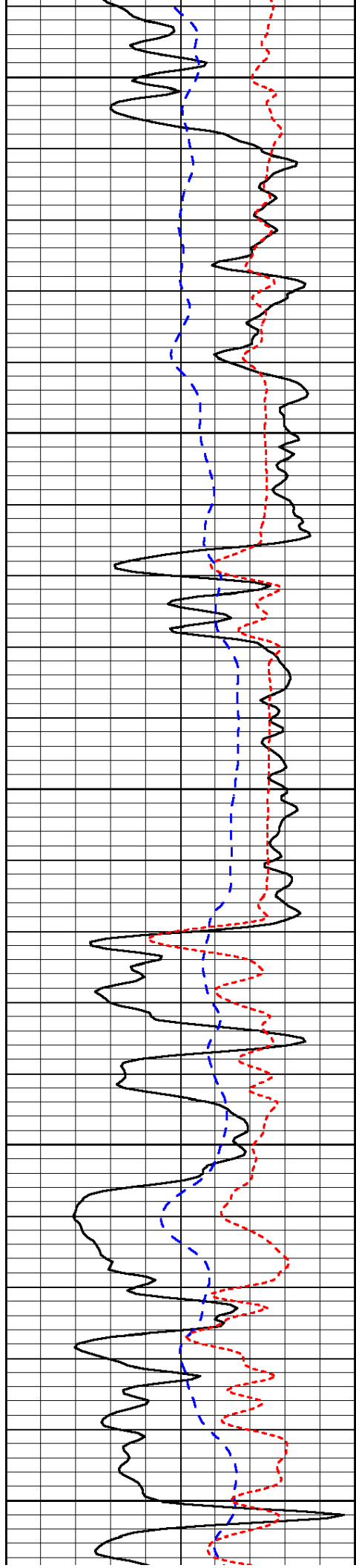


-33

-33

-34

-35



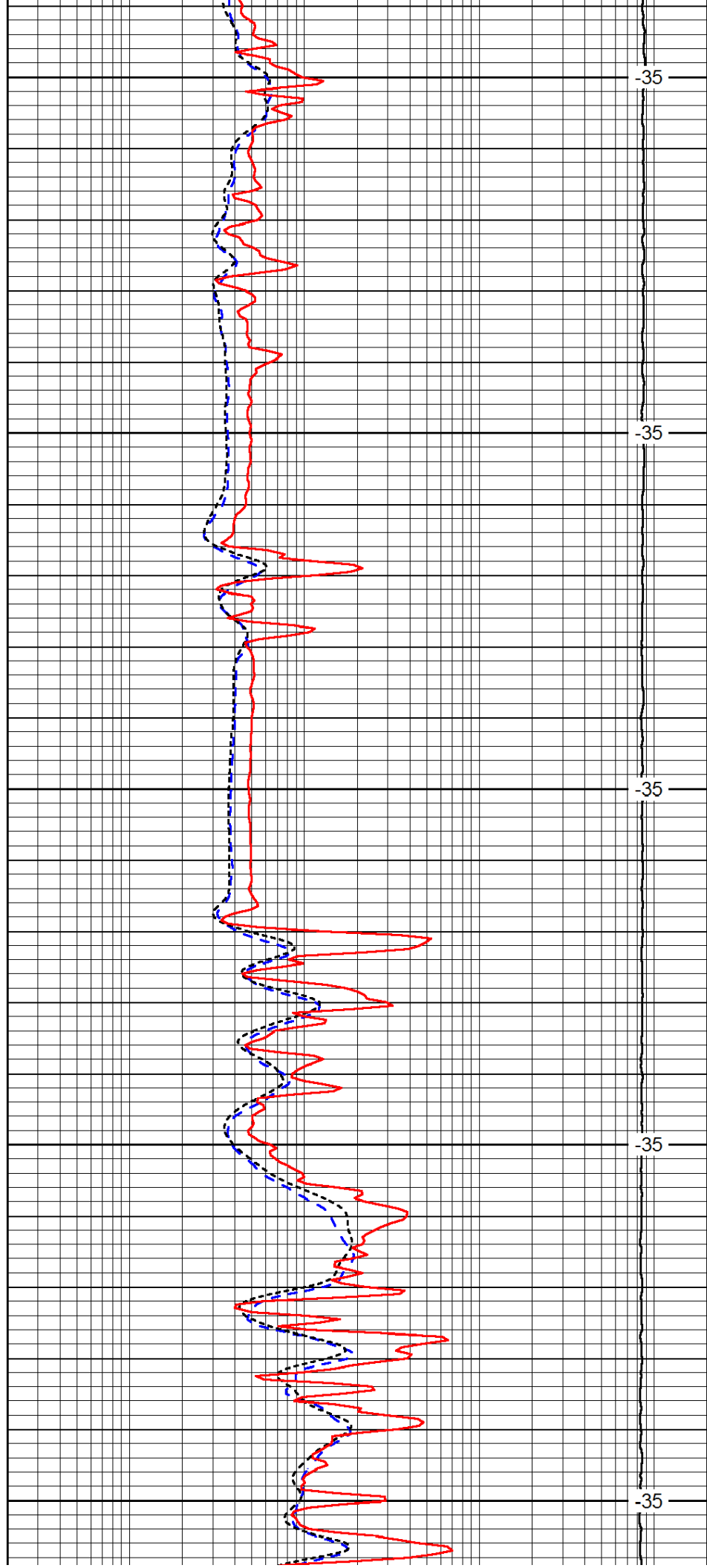
3000

3050

3100

3150

3200



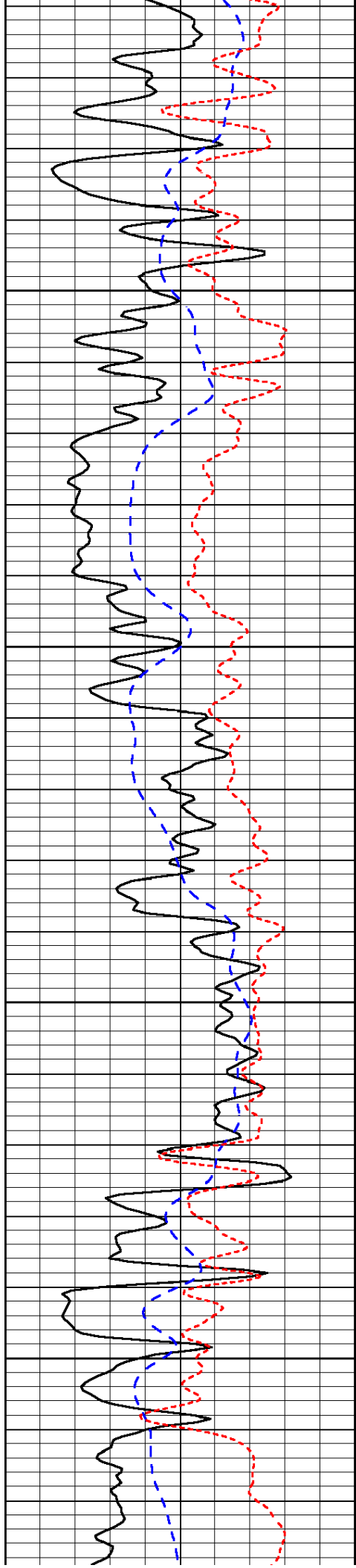
-35

-35

-35

-35

-35

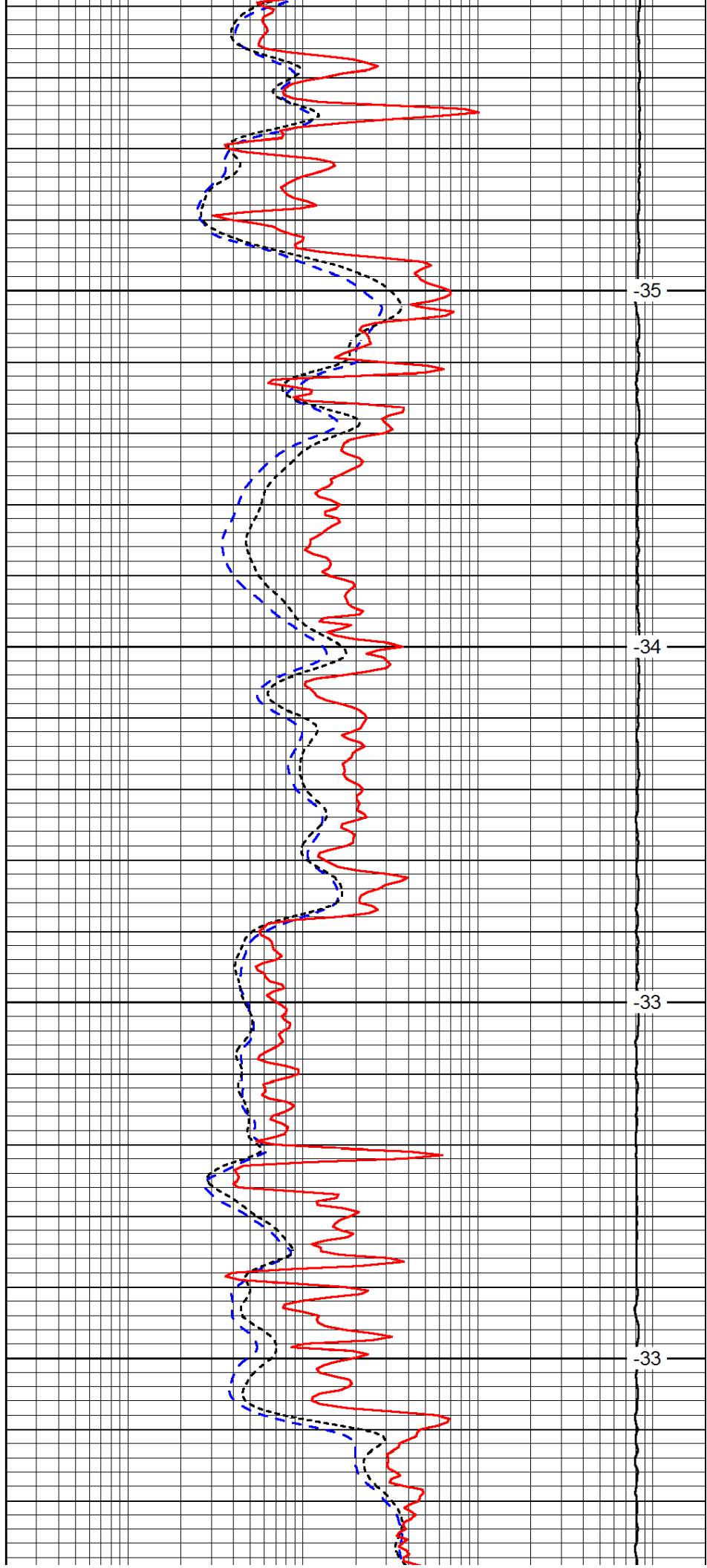


3250

3300

3350

3400

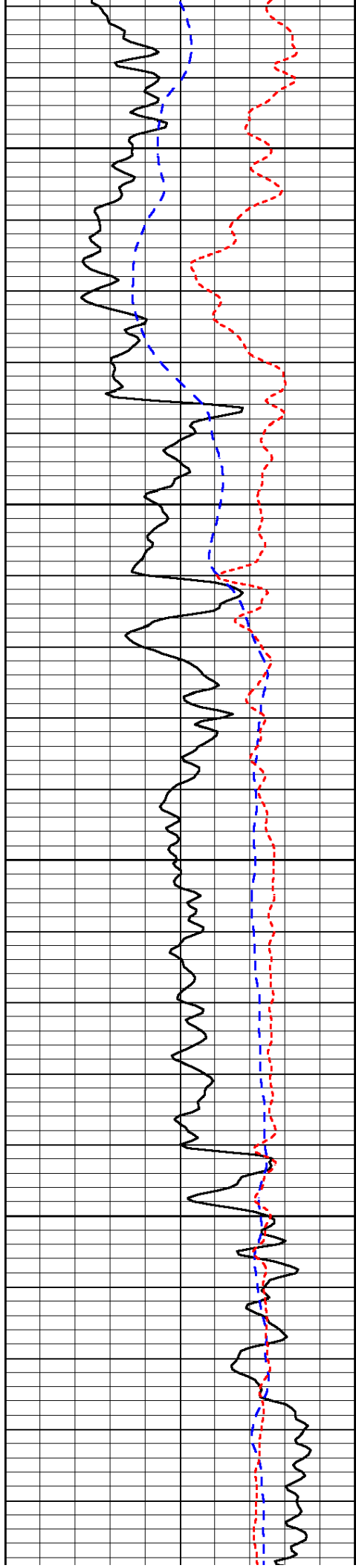


-35

-34

-33

-33

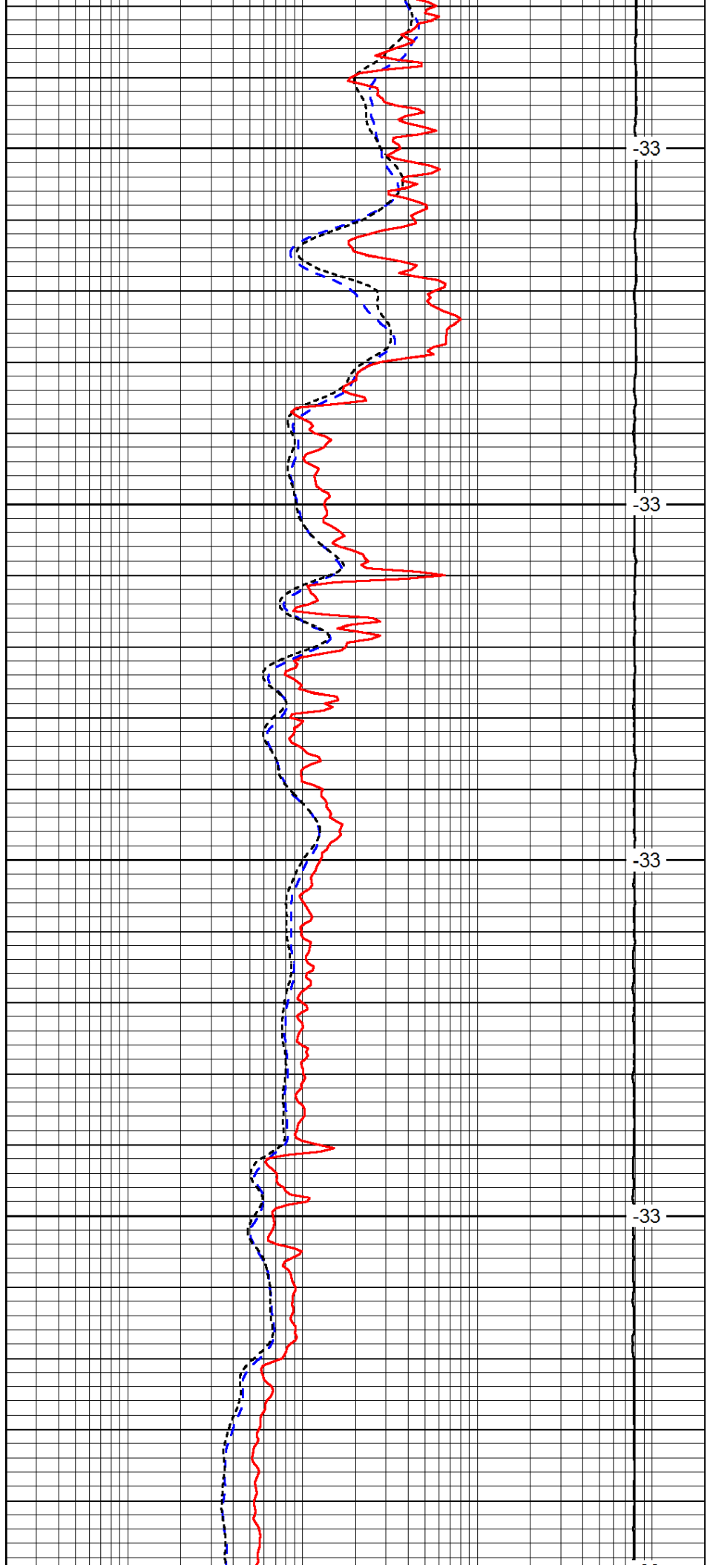


3450

3500

3550

3600

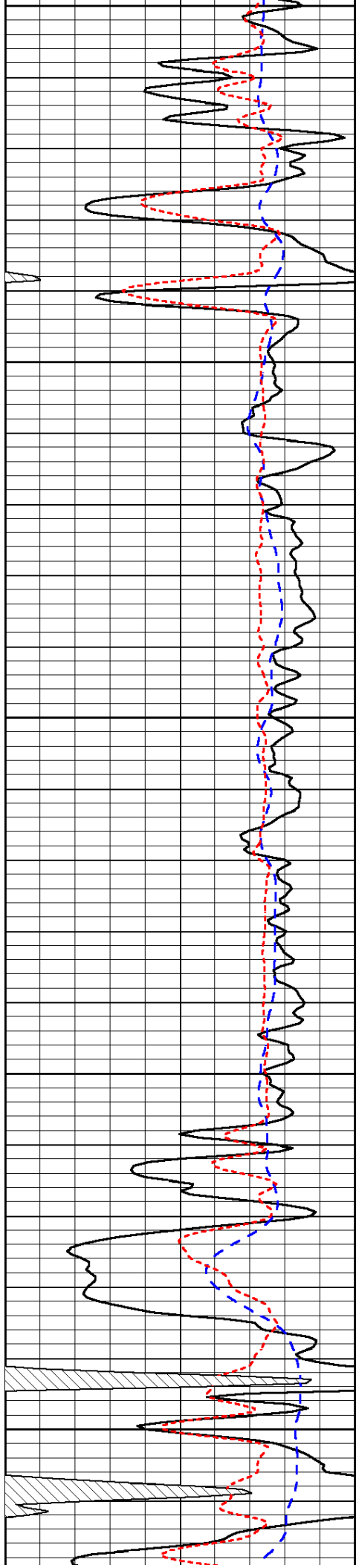


-33

-33

-33

-33



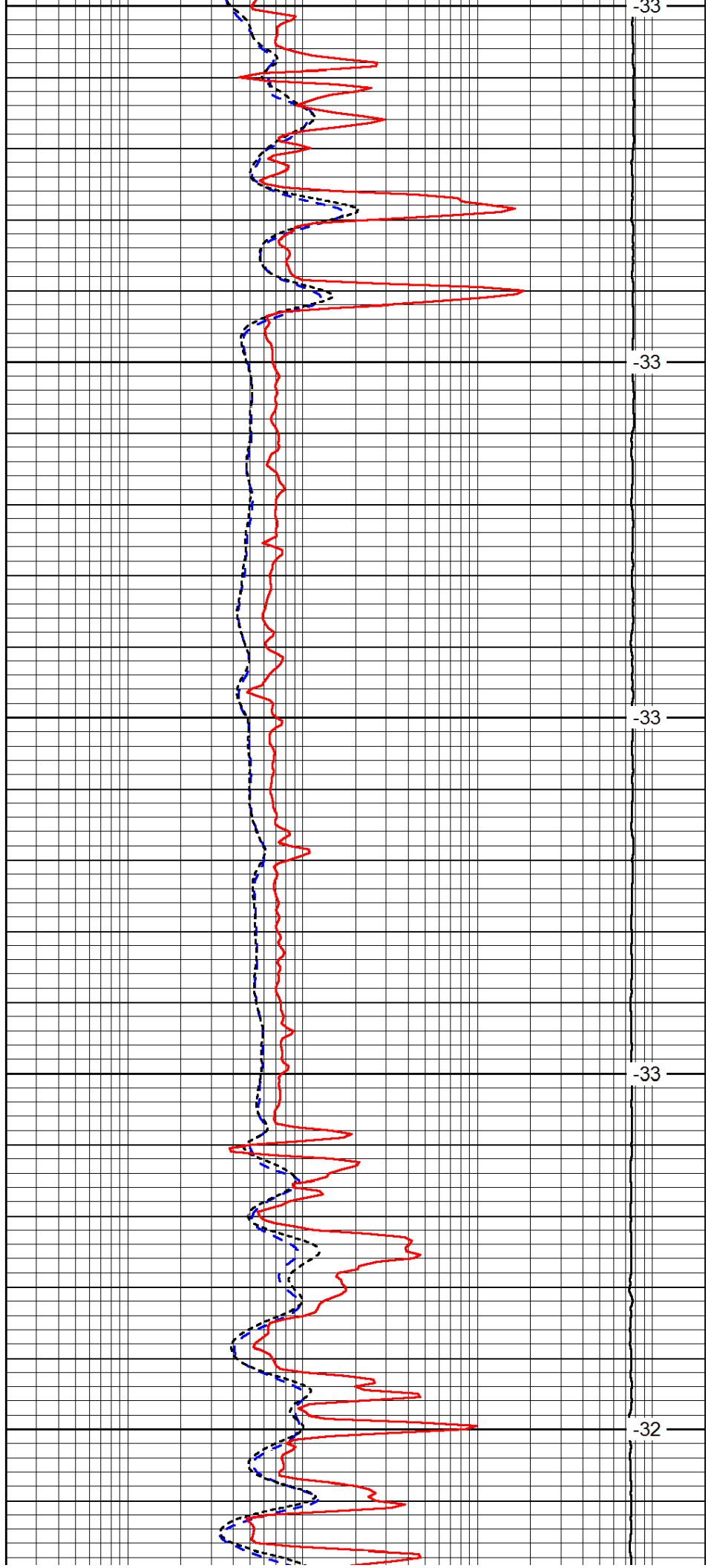
3650

3700

3750

3800

3850



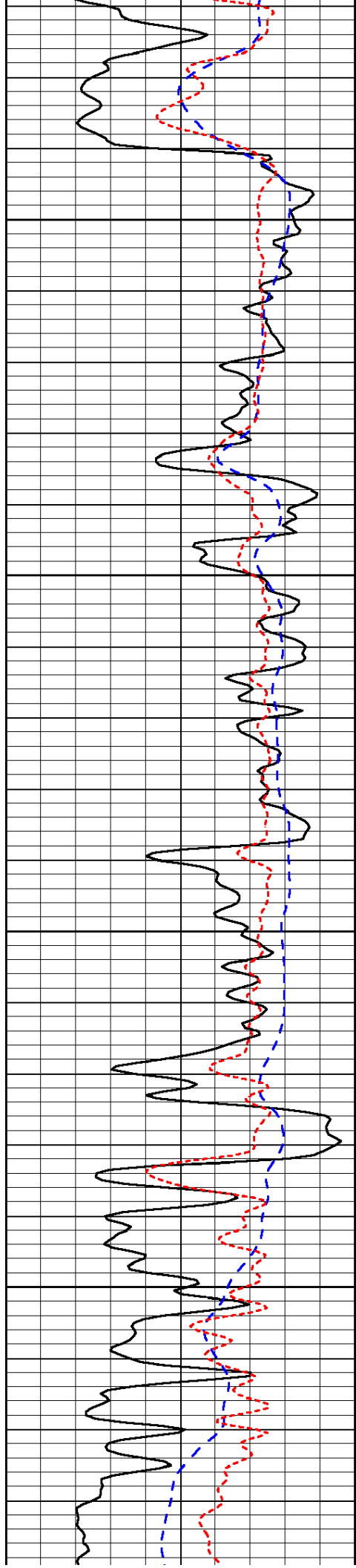
-33

-33

-33

-33

-32

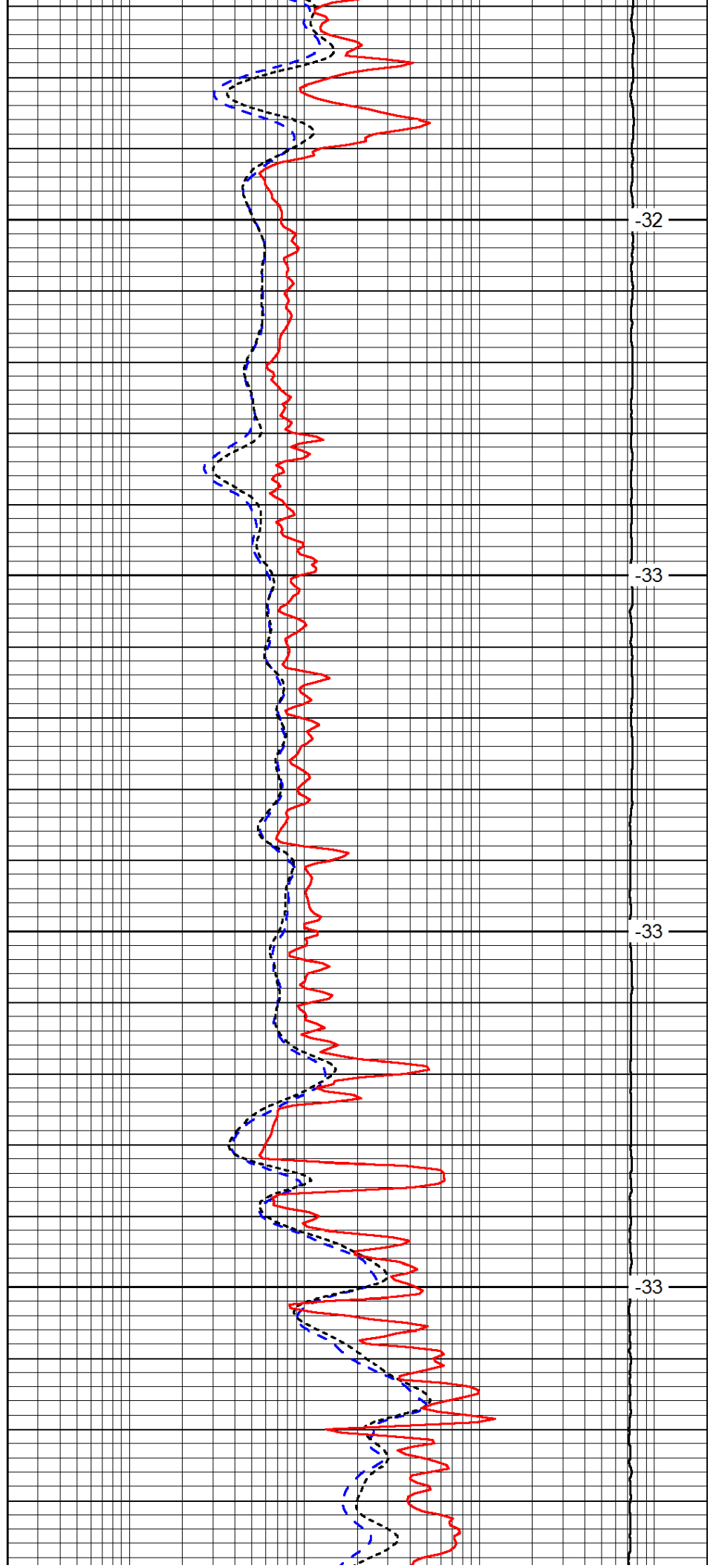


3900

3950

4000

4050

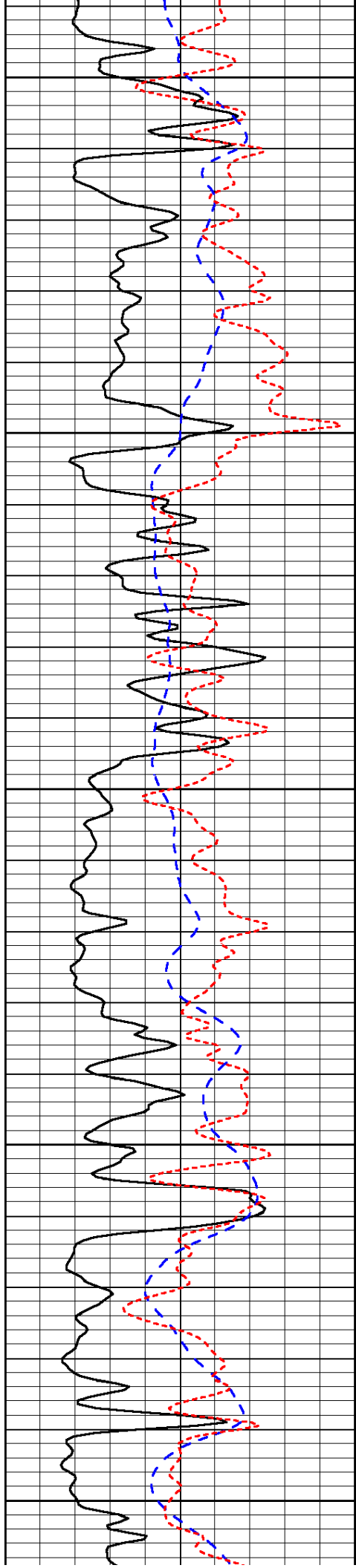


-32

-33

-33

-33



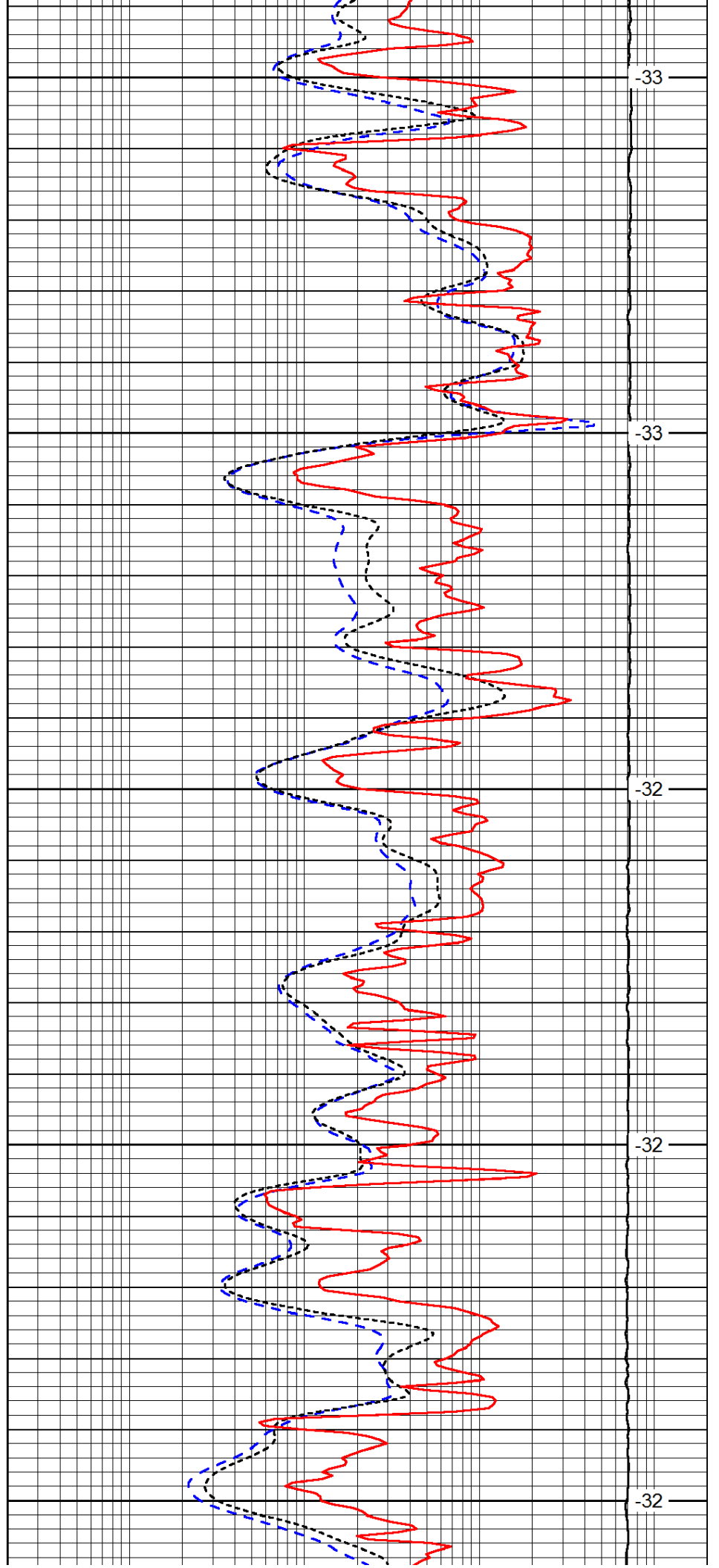
4100

4150

4200

4250

4300



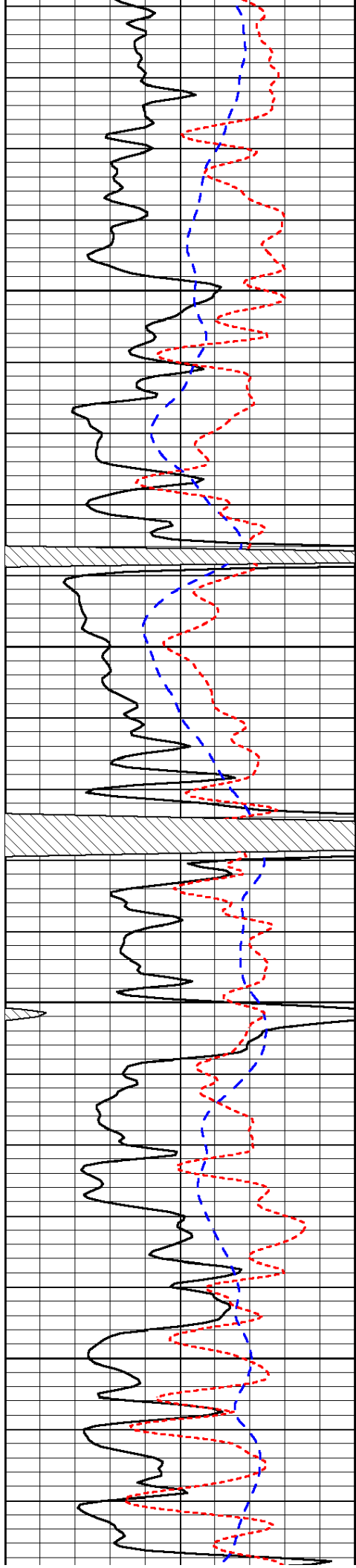
-33

-33

-32

-32

-32

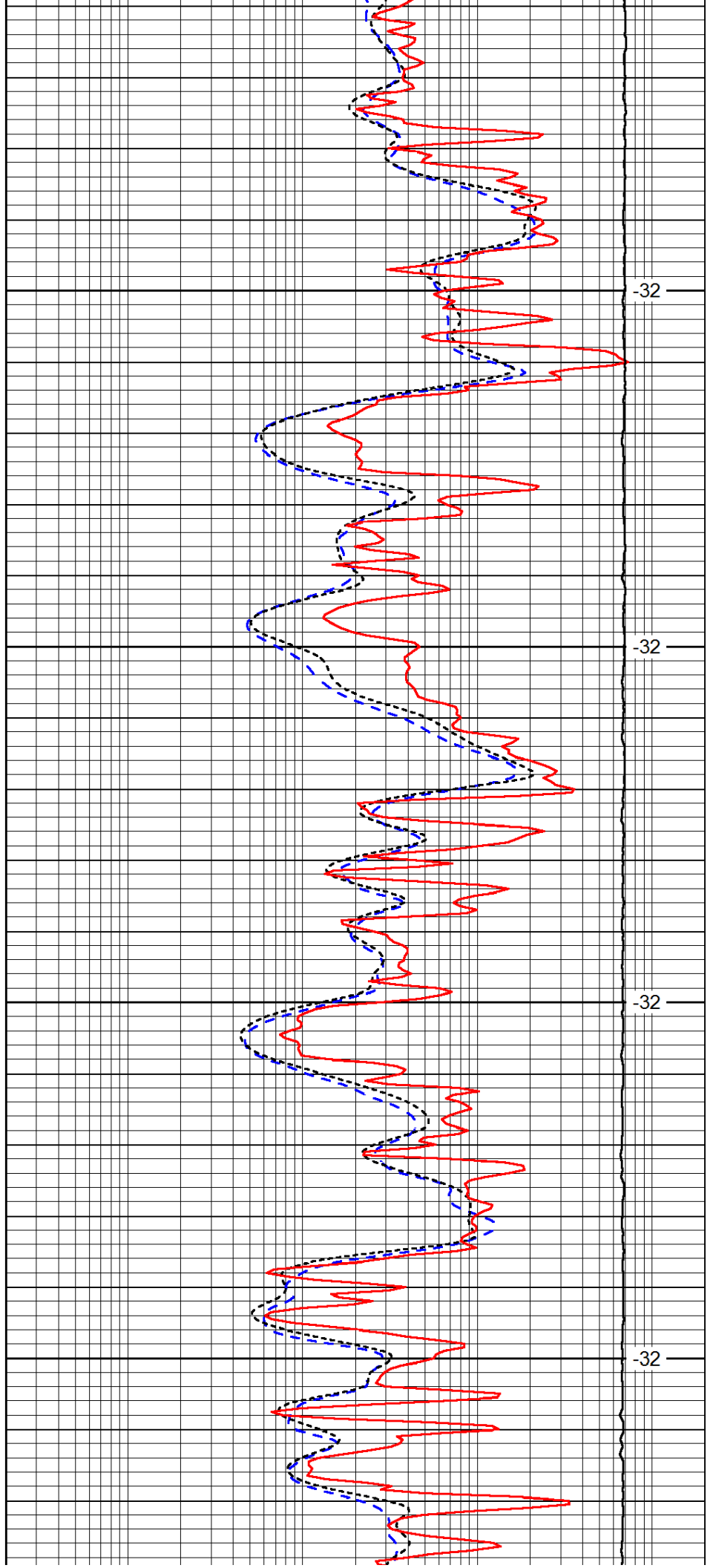


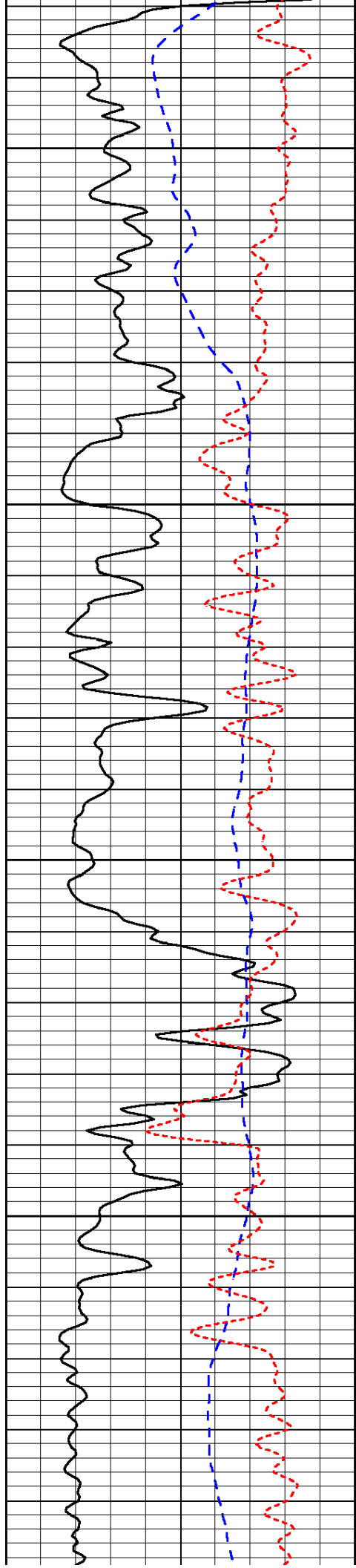
4350

4400

4450

4500



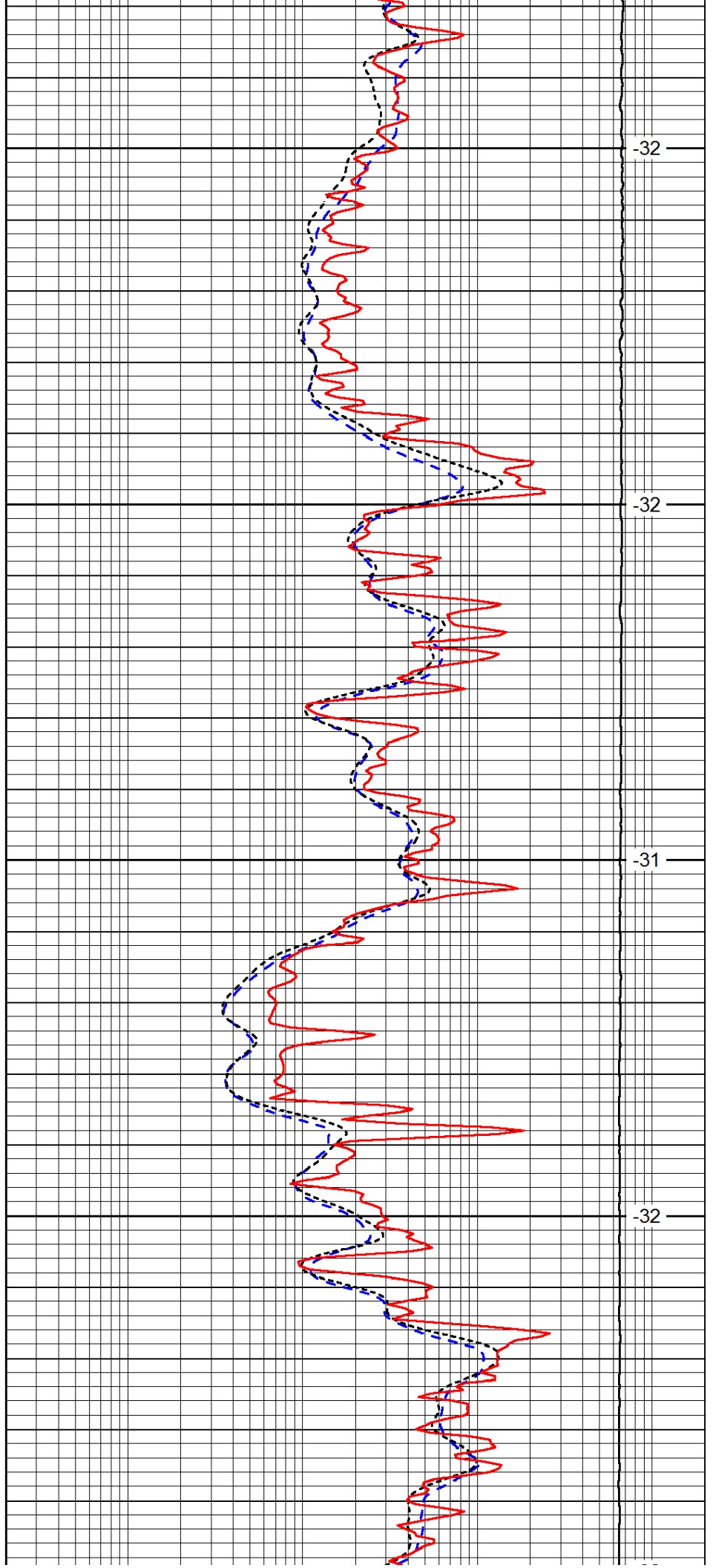


4550

4600

4650

4700

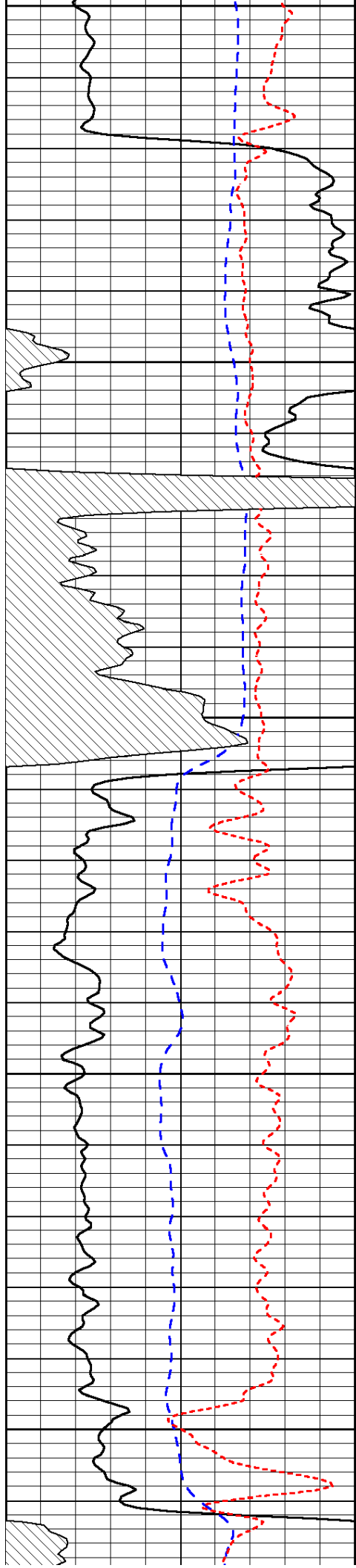


-32

-32

-31

-32



4750

4800

4850

4900

4950

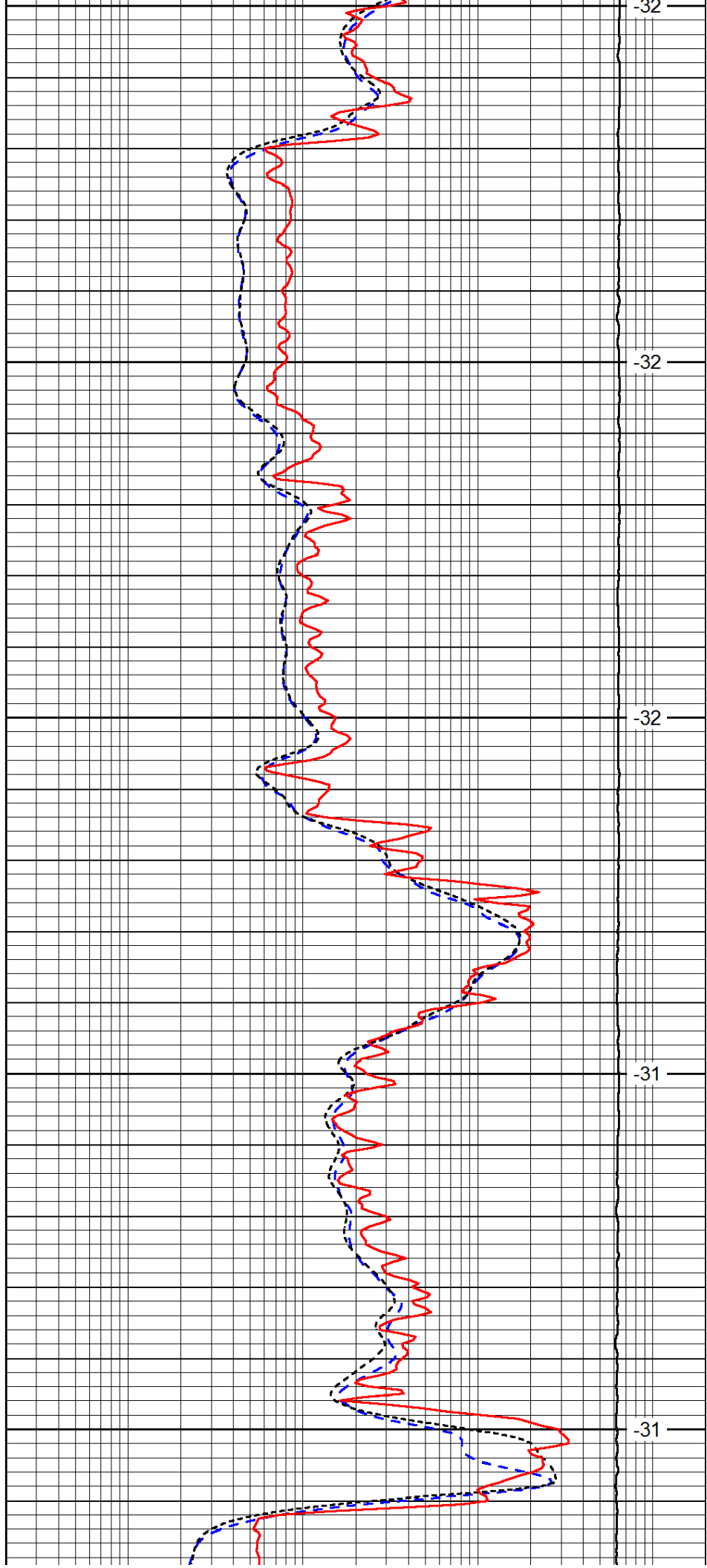
-32

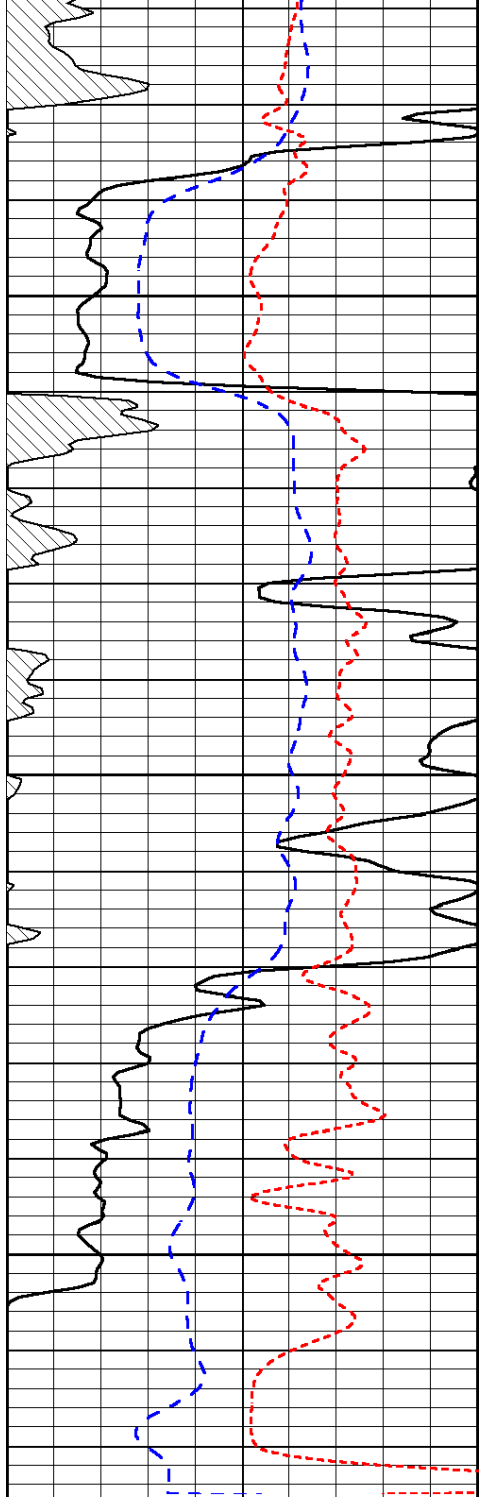
-32

-32

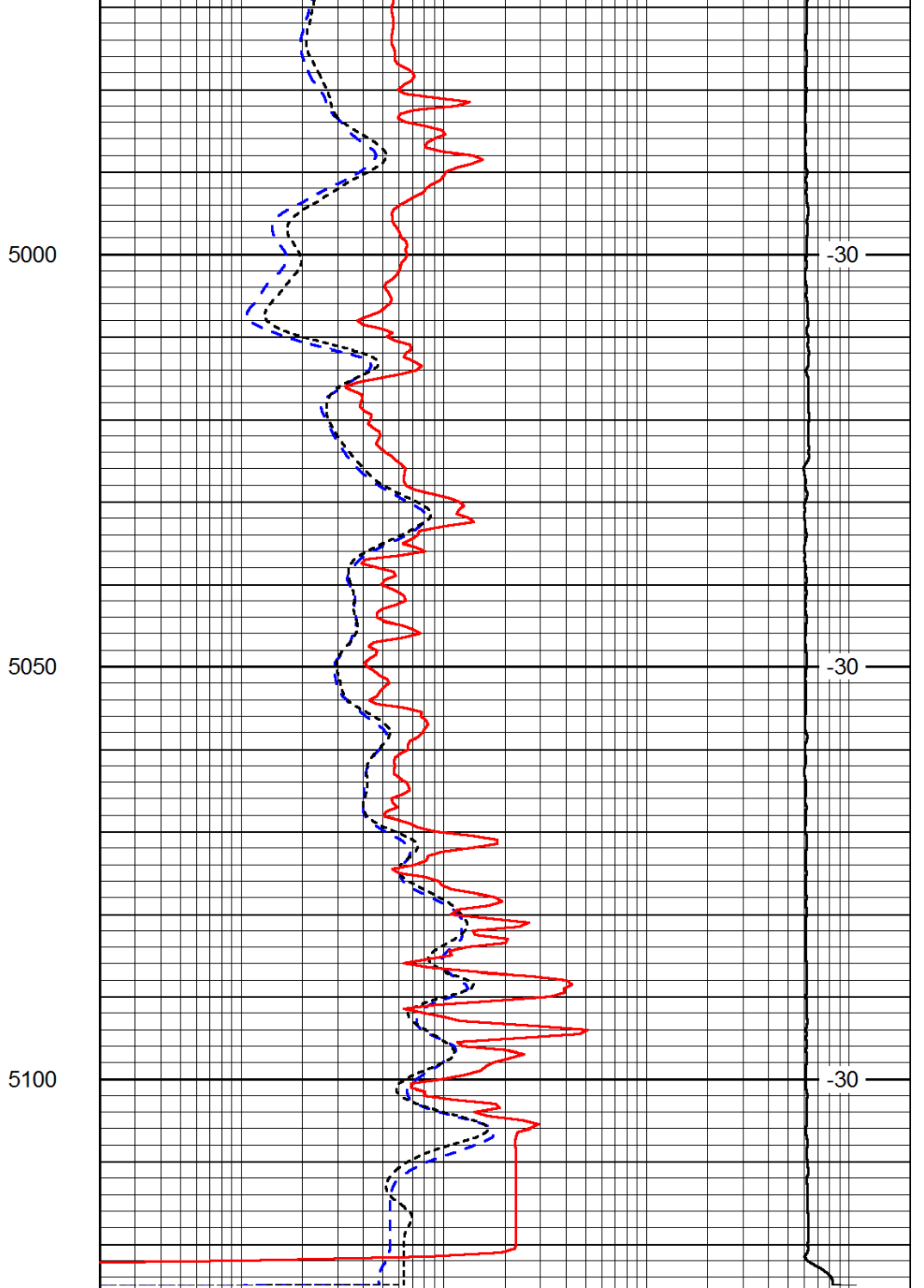
-31

-31





0	Gamma Ray	150
-200	SP (mV)	0
-160	RxoRt	40



0.2	Deep Resistivity	2000
0.2	Medium Resistivity	2000
0.2	Shallow Resistivity	2000
15000	Line Tension	0

LSPD