



Pioneer Energy Services

## Dual Compensated Porosity Log

15-007-24,139-00-00

API No.

Company **LB Exploration, Inc.**

Well **Boyd #2**

Field

County **Barber**

State **Kansas**

Location

**SE NW NW NW  
405' FNL & 485' FWL**

Sec: **34** Twp: **32S** Rge: **13W**

Other Services  
DIL  
MEL/BHCS

Ground Level **Elevation 1758**

Kelly Bushing **13 Ft. Above Perm. Datum**

Elevation  
K.B. 1771  
D.F. 1758  
G.L. 1758

Date **3/9/2014**

Run Number **One**

Type Log **CNL / CDL**

Depth Driller **5120**

Depth Logger **5122**

Bottom Logged Interval **5101**

Top Logged Interval **2600**

Type Fluid In Hole **Chemical**

Salinity, PPM CL **7000**

Density **9.5**

Level **Full**

Max. Rec. Temp. F **127**

Operating Rig Time **5 Hours**

Equipment -- Location **108 Hays**

Recorded By **J. Long**

Witnessed By **Steven Petermann**

**Borehole Record**

**Casing Record**

Run No.	Bit	From	To	Size	Wgt.	From	To
1	12.25	00	353				
2	7.875	353	5120				

<<< Fold Here >>>

All interpretations are opinions based on inferences from electrical or other measurements and we cannot and do not guarantee the accuracy or correctness of any interpretation, and we shall not, except in the case of gross or willful negligence on our part, be liable or responsible for any loss, costs, damages, or expenses incurred or sustained by anyone resulting from any interpretation made by any of our officers, agents or employees. These interpretations are also subject to our general terms and conditions set out in our current Price Schedule.

**Comments**

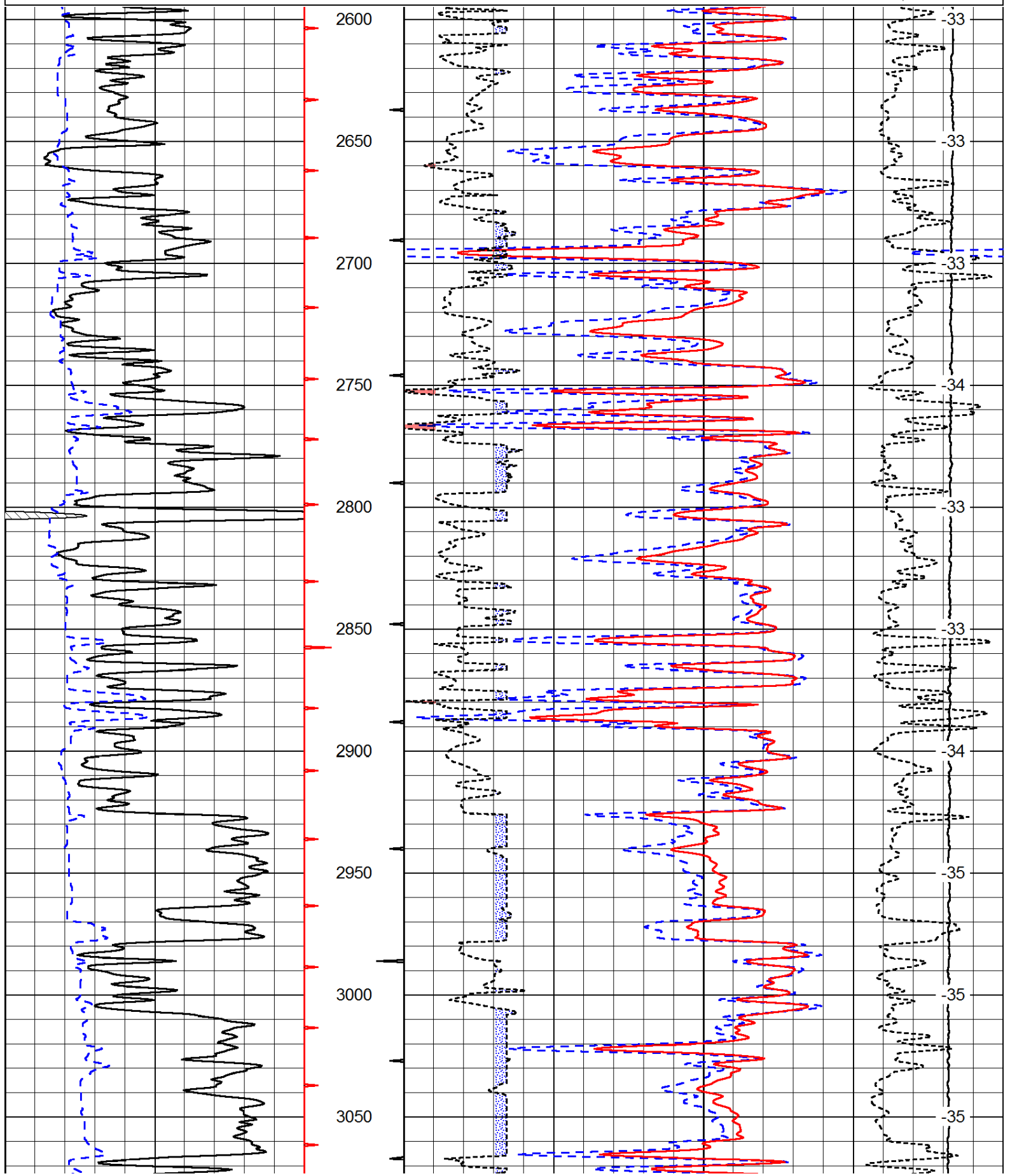
Thank you for using Pioneer Energy Services  
www.pioneerenergy.com  
785 625 3858

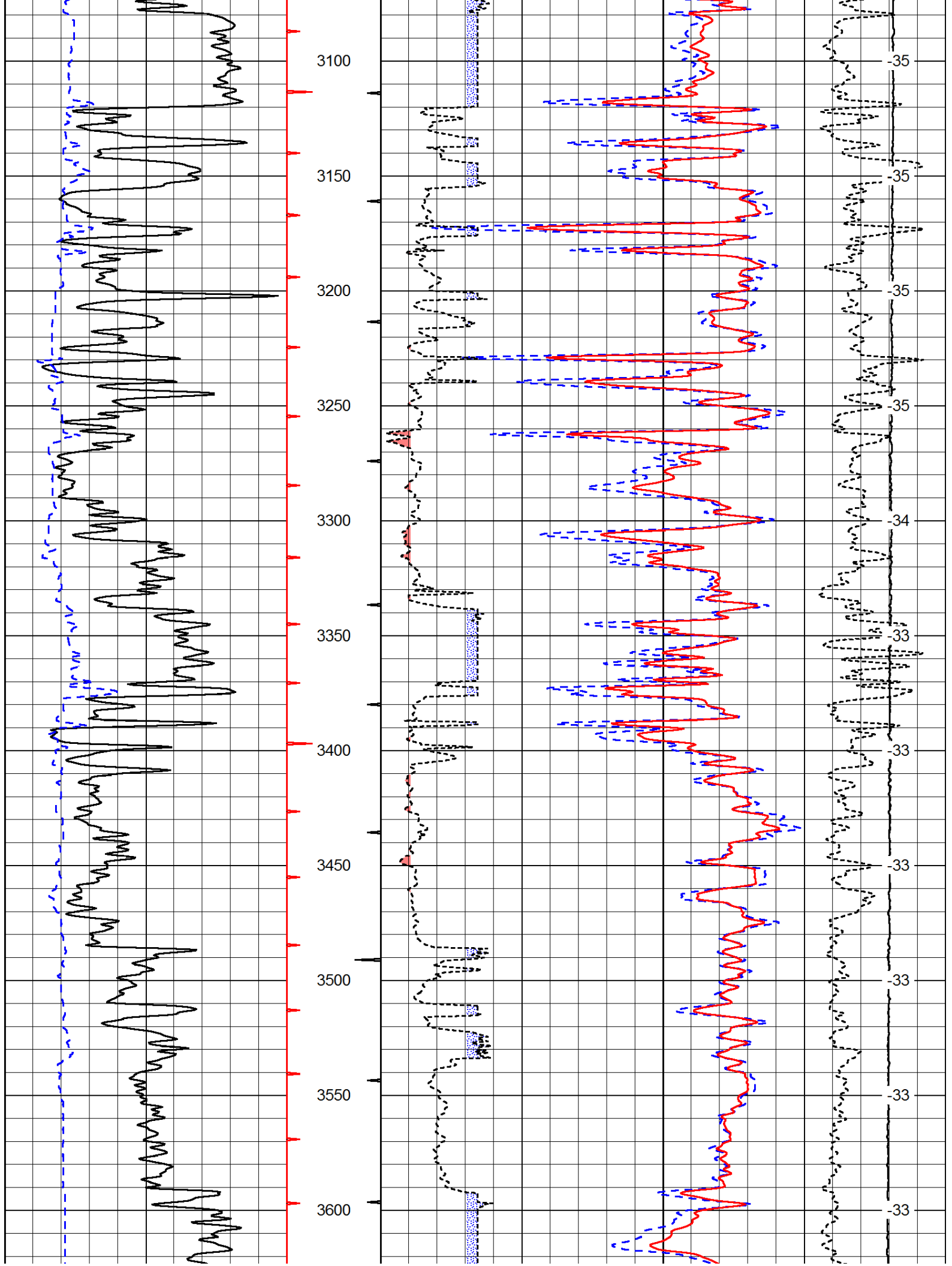
Medicine Lodge, 6 West to Bitter Creek Road, 1 1/2 South, East Into (Left @ Fork)

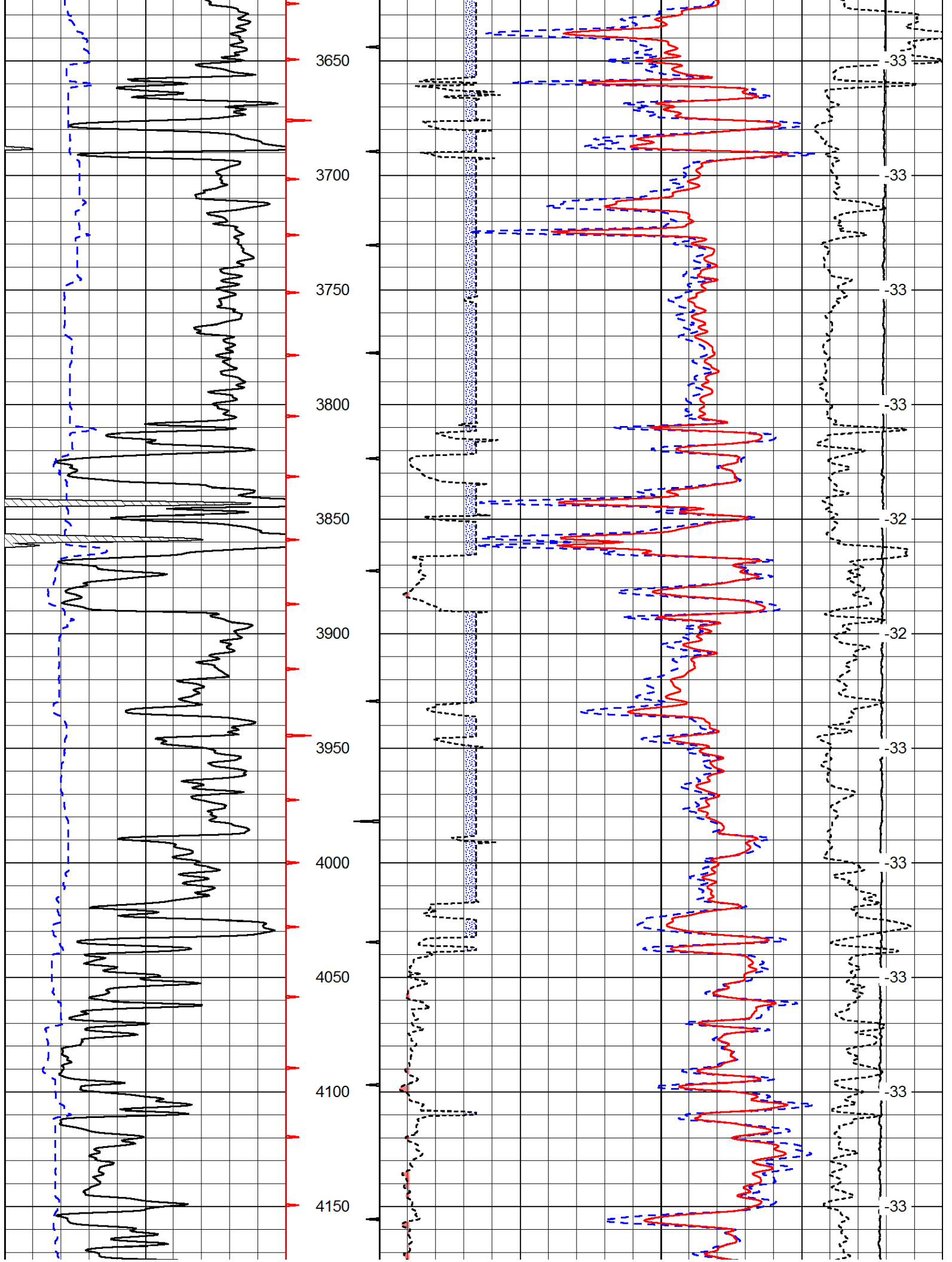
Database File: c:\warrior\data\lb\_exp\_boyd #2\lbexploration\_boyd\_2hd.db  
 Dataset Pathname: dil/lbstck  
 Presentation Format: cdl  
 Dataset Creation: Sun Mar 09 10:26:33 2014  
 Charted by: Depth in Feet scaled 1:600

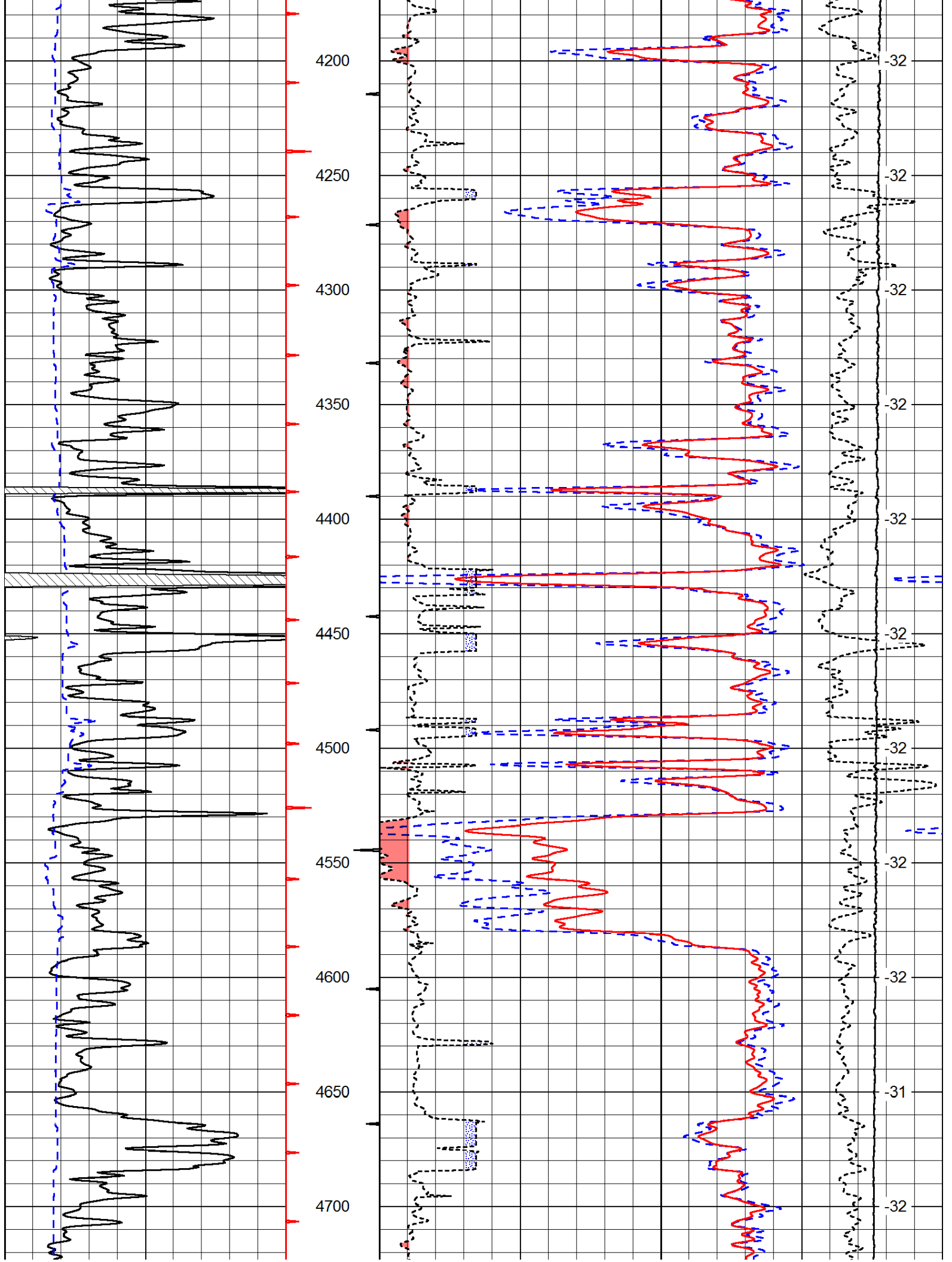
0	Gamma Ray	150
6	Caliper (GAPI)	16

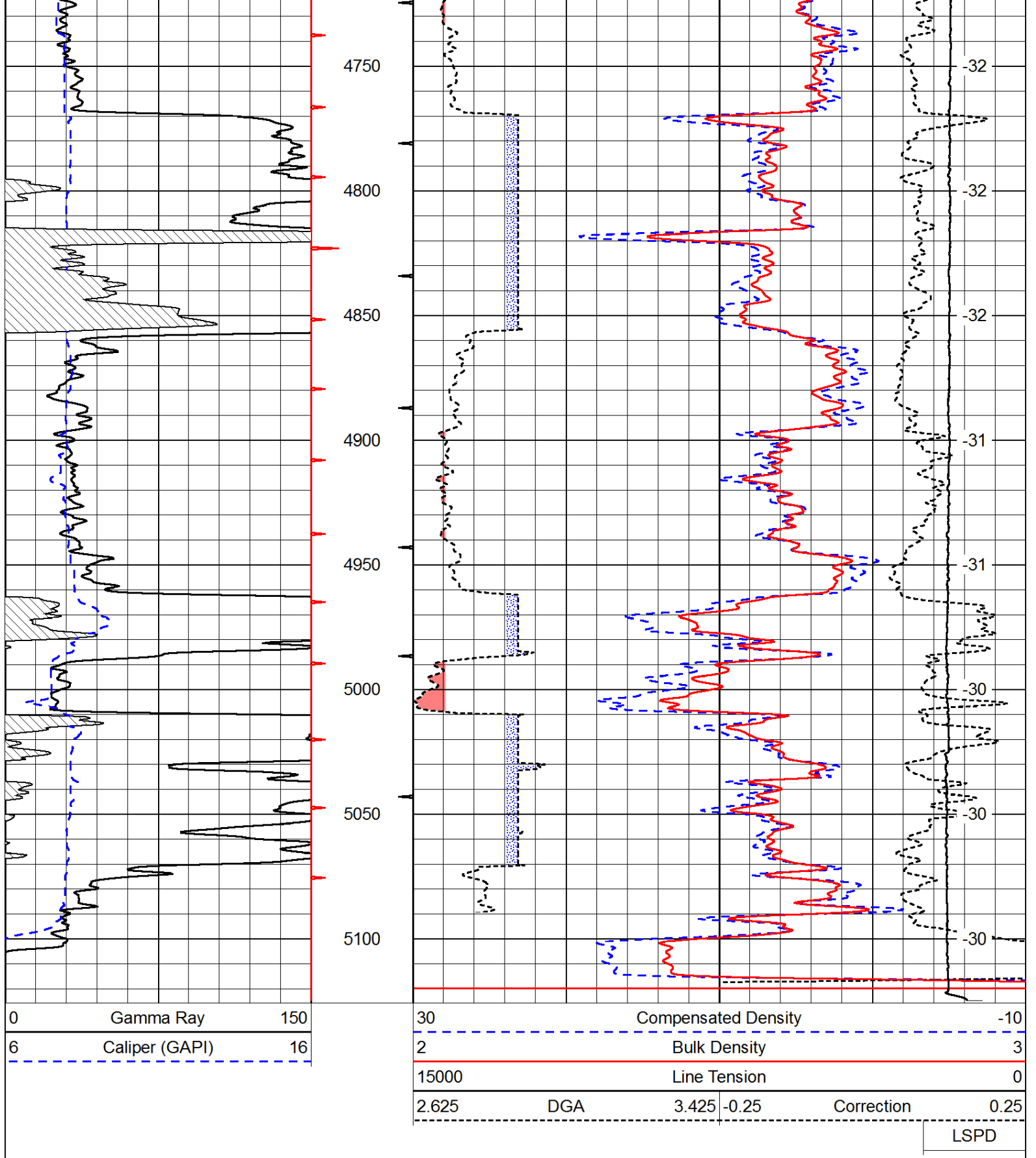
30	Compensated Density		-10
2	Bulk Density		3
15000	Line Tension		0
2.625	DGA	3.425	-0.25
Correction			0.25
LSPD			



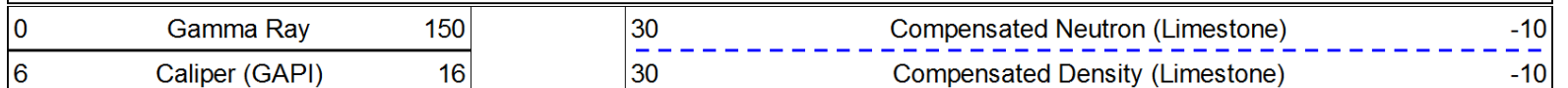








Database File: c:\warrior\data\lb\_exp\_boyd #2\lbexploration\_boyd\_2hd.db  
 Dataset Pathname: dil/lbstock  
 Presentation Format: cndlspec  
 Dataset Creation: Sun Mar 09 10:26:33 2014  
 Charted by: Depth in Feet scaled 1:240



2.625	DGA	3.425	-0.25	Correction	0.25
15000	Line Tension				0

LSPD

