



Pioneer Energy Services

# Microresistivity Log

15-007-24,139-00-00

API No.

Company **LB Exploration, Inc.**

Well **Boyd #2**

Field

County **Barber**

State

**Kansas**

Location

**SE NW NW NW  
405' FNL & 485' FWL**

Other Services  
CNL/CDL  
DIL/BHCS

Sec: **34**

Twp: **32S**

Rge: **13W**

Elevation

K.B. 1771

D.F. 1758

G.L. 1758

Permanent Datum  
Log Measured From  
Drilling Measured From

Ground Level  
Kelly Bushing  
From Kelly Bushing

Elevation 1758  
13 Ft. Above Perm. Datum

Date **3/9/2014**

Run Number **Two**

Depth Driller **5120**

Depth Logger **5122**

Bottom Logged Interval **5121**

Top Log Interval **2600**

Casing Driller **8.625 @ 353**

Casing Logger **350**

Bit Size **7.875**

Type Fluid in Hole **Chemical**

Salinity, ppm CL **7000**

Density / Viscosity **9.5 | 56**

pH / Fluid Loss **8.5 | 10.8**

Source of Sample **Flowline**

Rm @ Meas. Temp **.70 @ 70**

Rmf @ Meas. Temp **.53 @ 70**

Rmc @ Meas. Temp **.95 @ 70**

Source of Rmf / Rmc **Charts**

Rm @ BHT **.39 @ 127**

Operating Rig Time **5 Hours**

Max Rec. Temp. F **127**

Equipment Number **108**

Location **Hays**

Recorded By **J. Long**

Witnessed By **Steven Petermann**

<<< Fold Here >>>

All interpretations are opinions based on inferences from electrical or other measurements and we cannot and do not guarantee the accuracy or correctness of any interpretation, and we shall not, except in the case of gross or willful negligence on our part, be liable or responsible for any loss, costs, damages, or expenses incurred or sustained by anyone resulting from any interpretation made by any of our officers, agents or employees. These interpretations are also subject to our general terms and conditions set out in our current Price Schedule.

### Comments

Thank you for using Pioneer Energy Services  
www.pioneerenergy.com  
785 625 3858

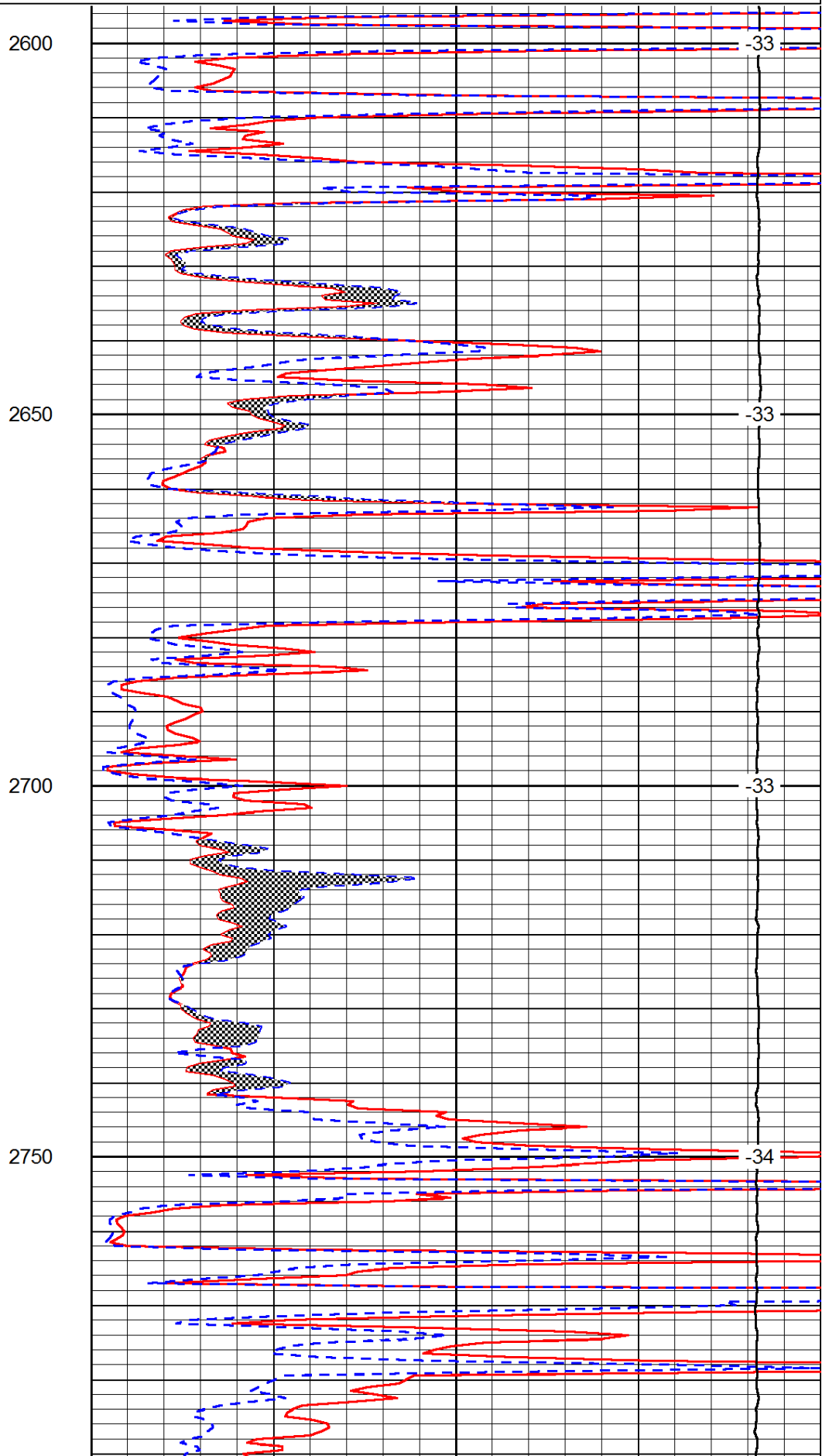
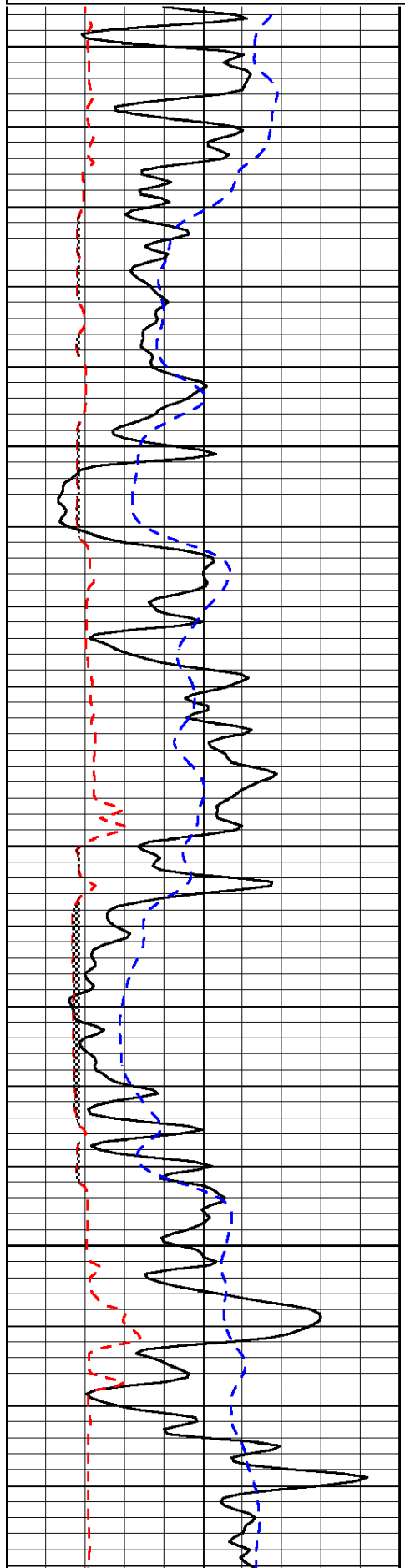
Medicine Lodge, 6 West to Bitter Creek Road, 1 1/2 South, East Into (Left @ Fork)

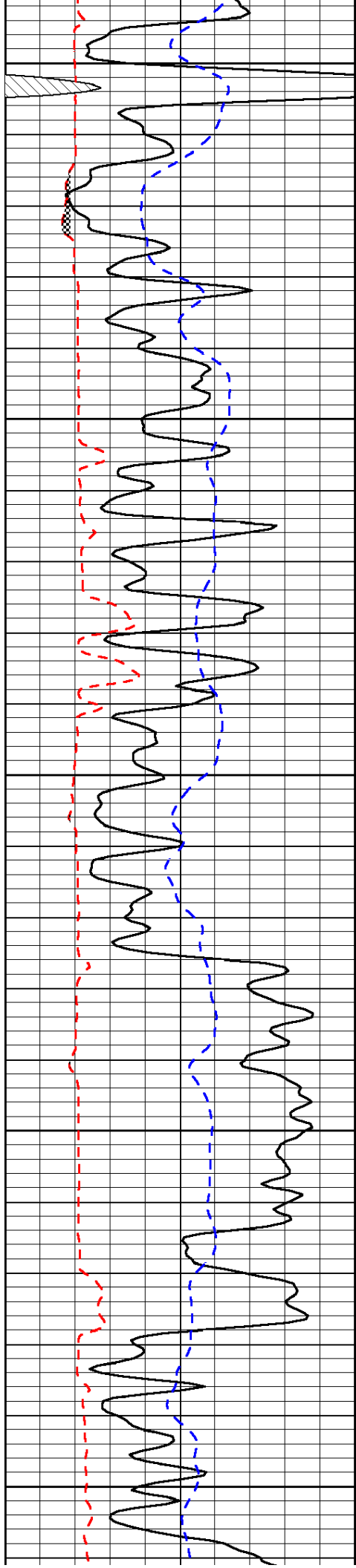
Database File: c:\warrior\data\lb\_exp\_boyd #2\lbexploration\_boyd\_2hd.db  
Dataset Pathname: dil/lbstock  
Presentation Format: micro  
Dataset Creation: Sun Mar 09 10:26:33 2014  
Charted by: Depth in Feet scaled 1:240

0	Gamma Ray	150
6	Micro Log Caliper (GAPI)	16
-200	SP (mV)	0

0	Micro Inverse 1 X 1	40
0	Micro Normal 2"	40
15000	Line Weight	0

LSPD





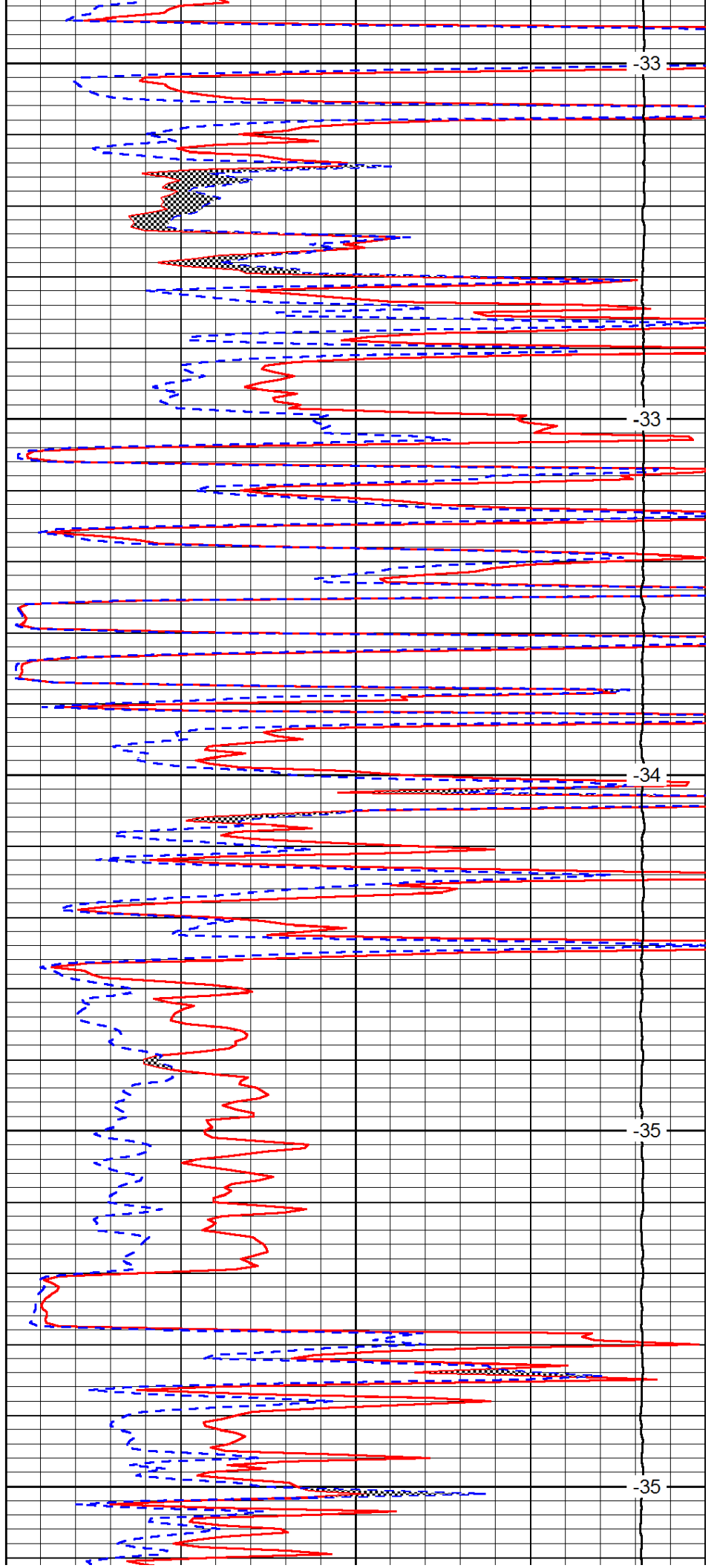
2800

2850

2900

2950

3000



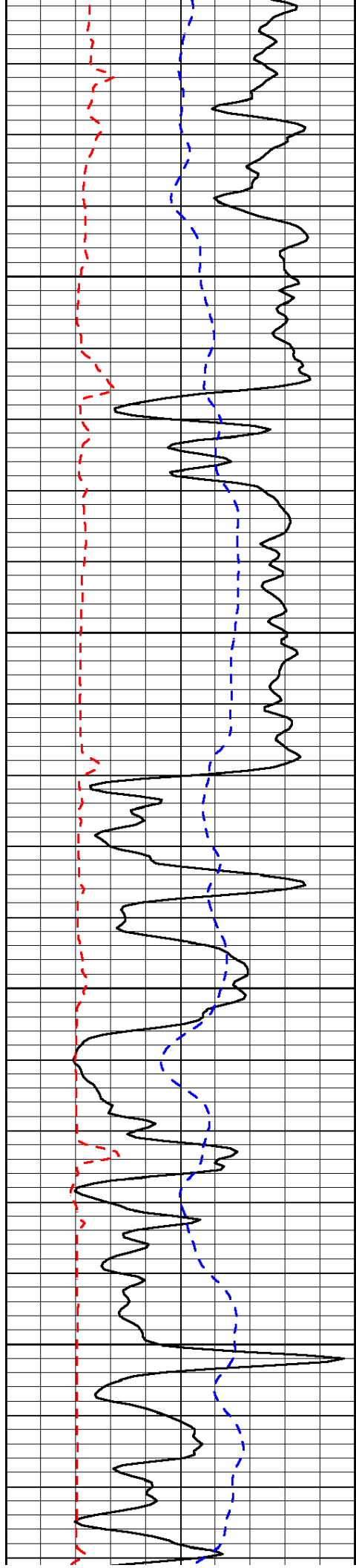
-33

-33

-34

-35

-35

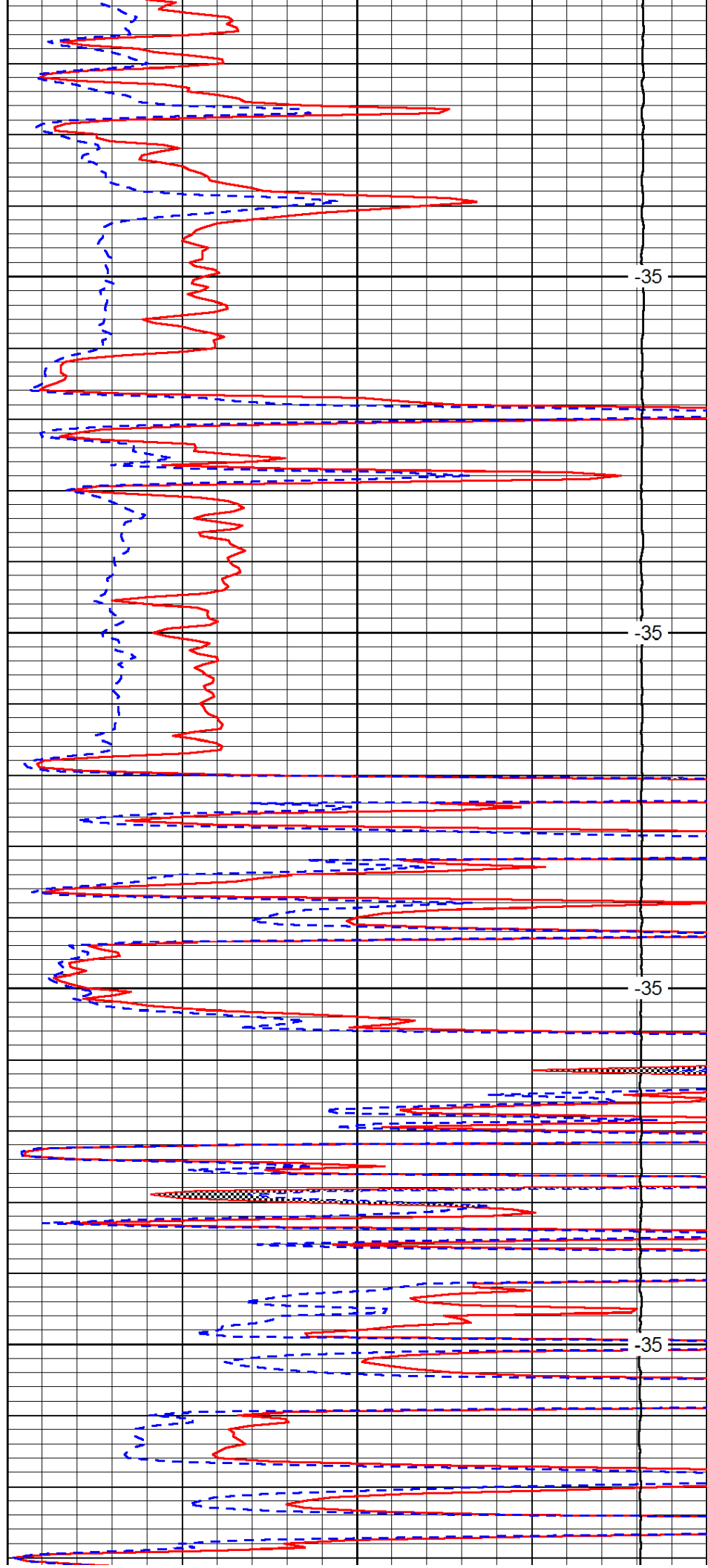


3050

3100

3150

3200

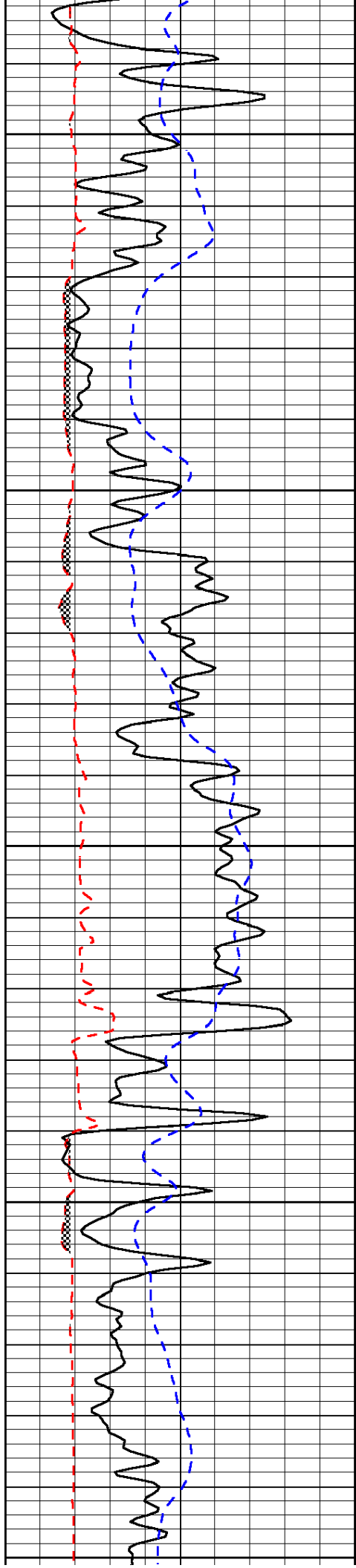


-35

-35

-35

-35



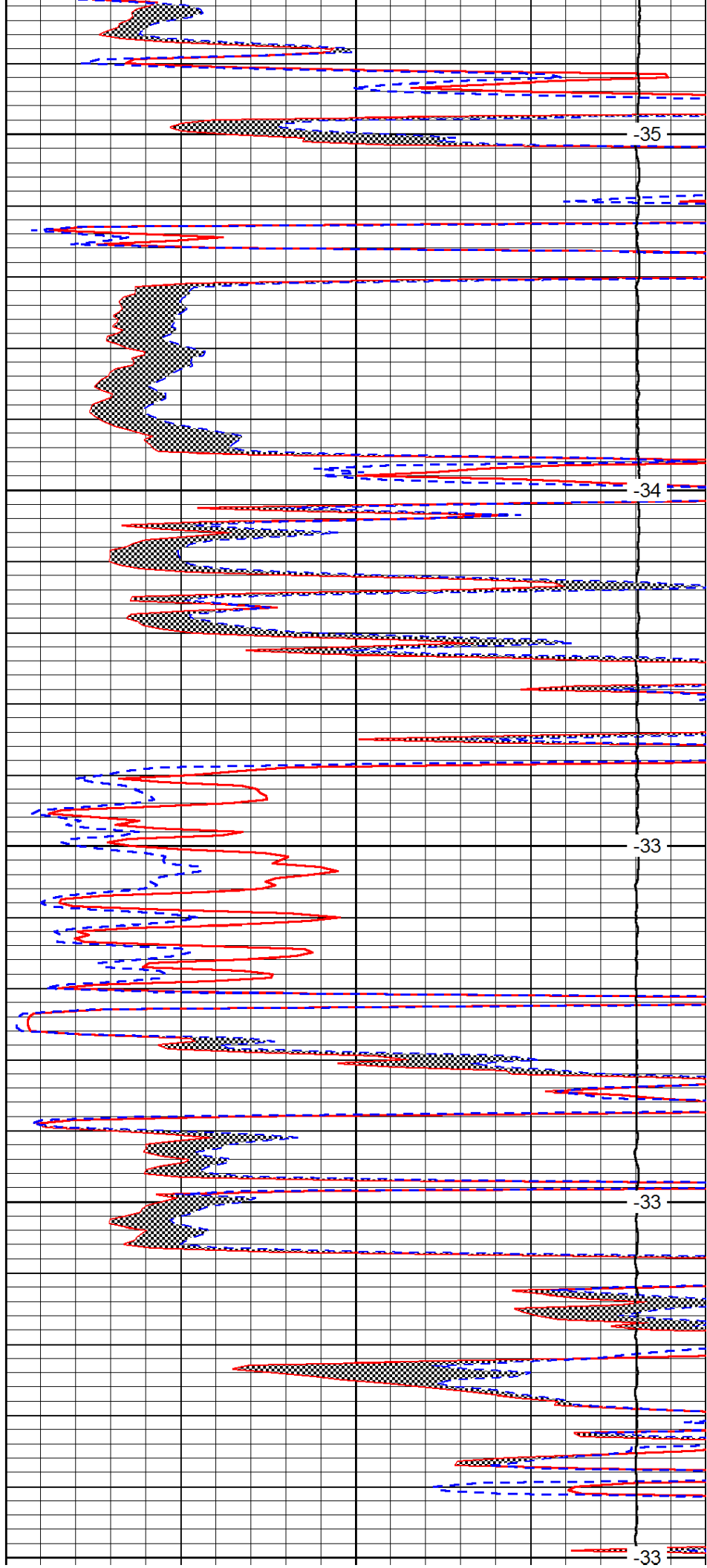
3250

3300

3350

3400

3450



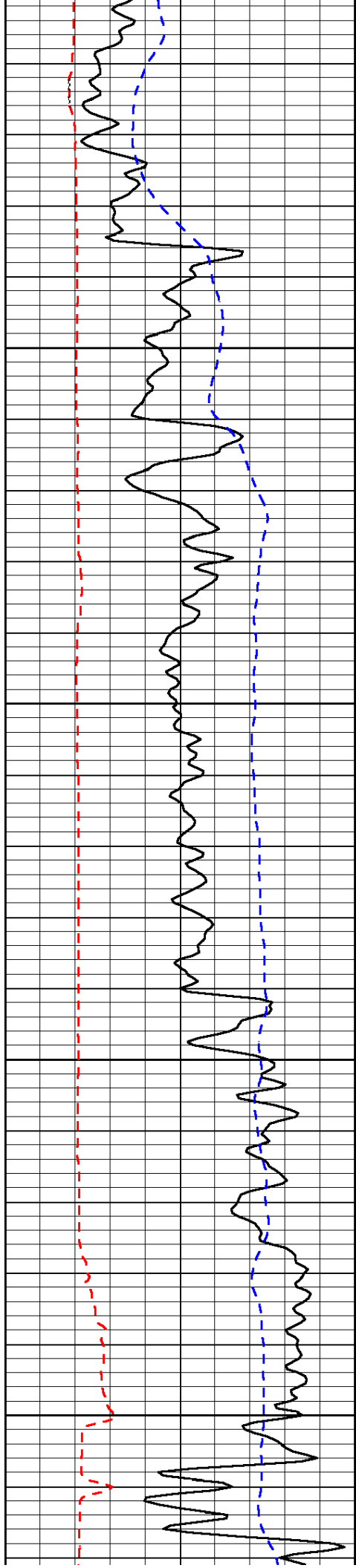
-35

-34

-33

-33

-33

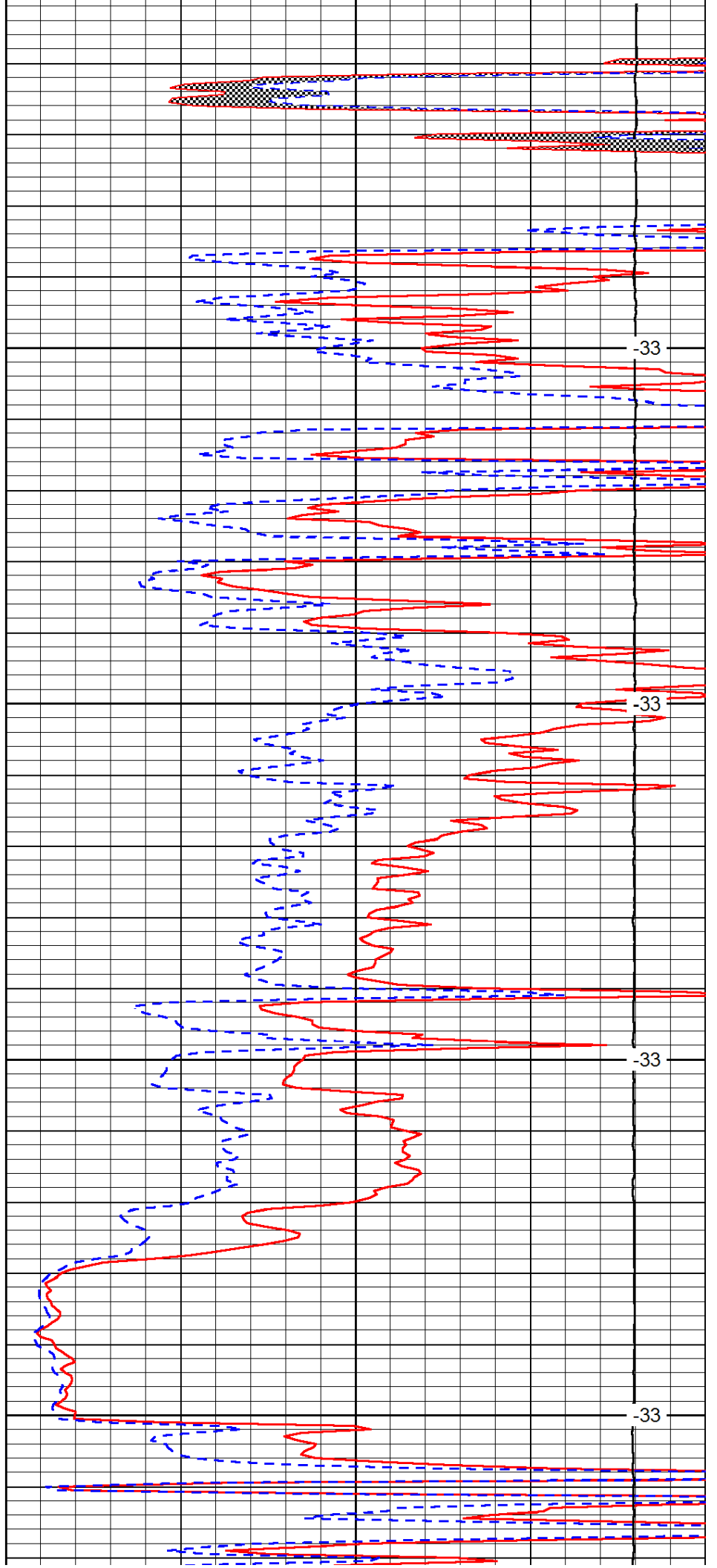


3500

3550

3600

3650

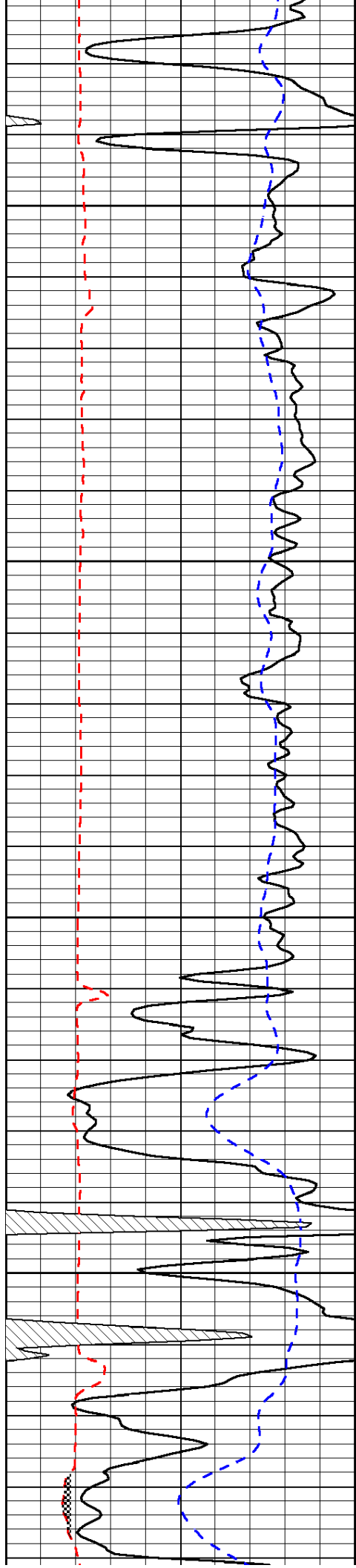


-33

-33

-33

-33

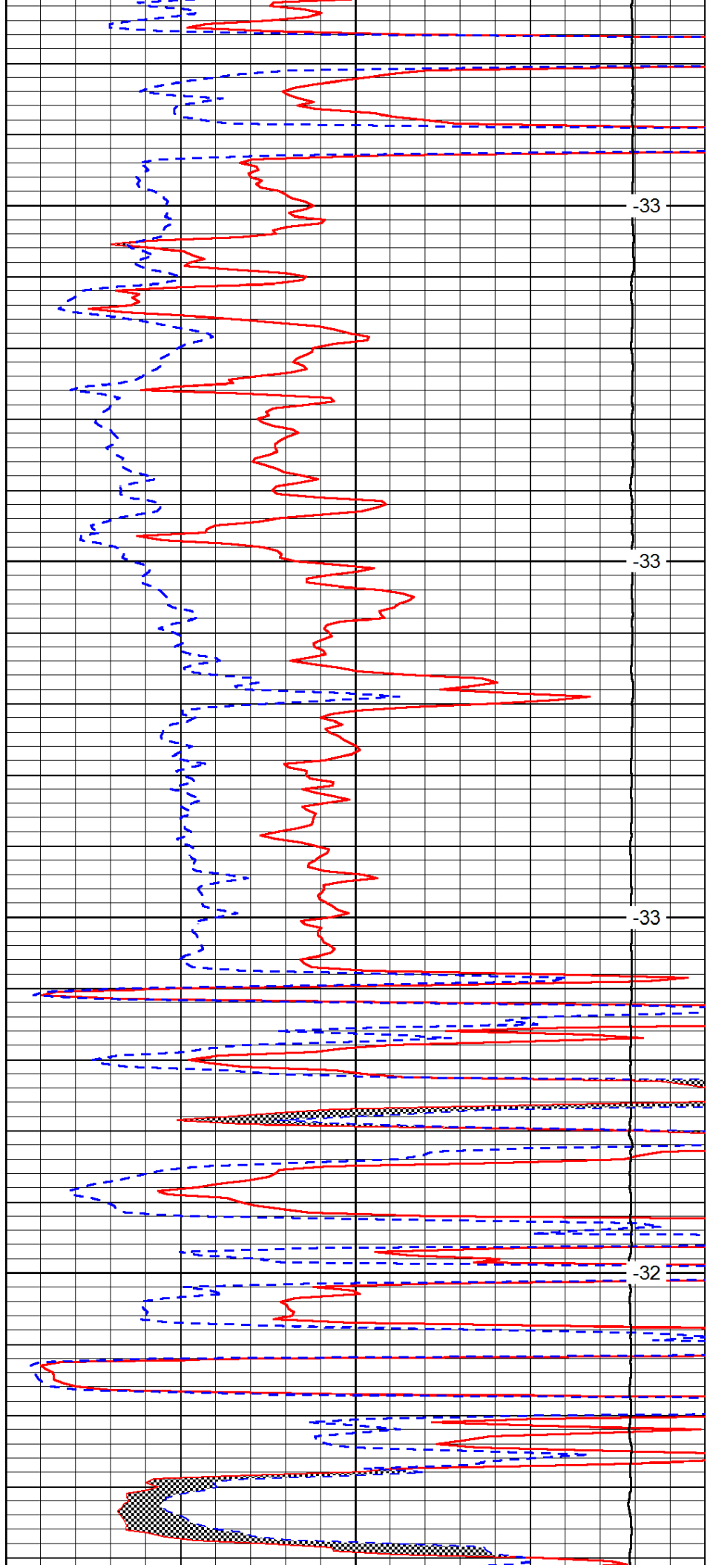


3700

3750

3800

3850

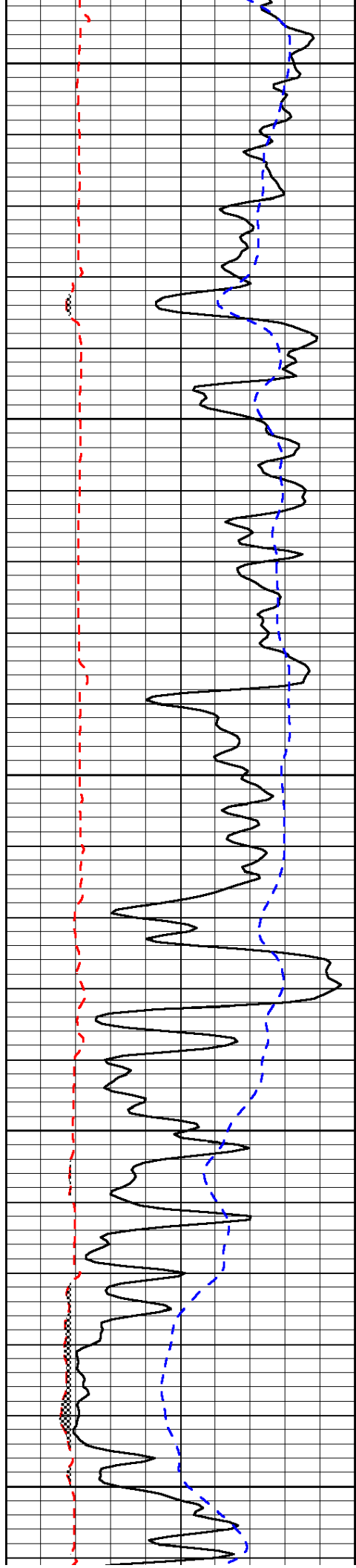


-33

-33

-33

-32



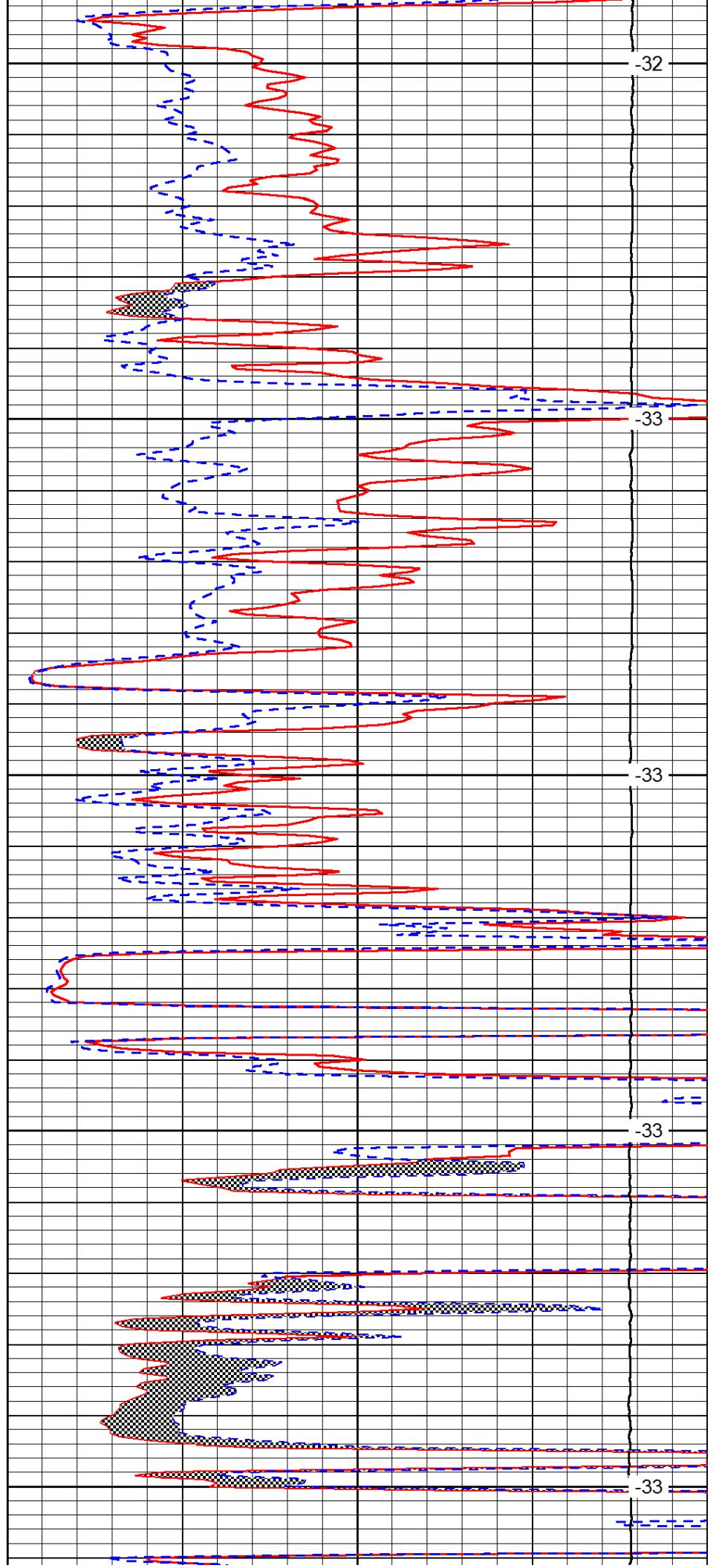
3900

3950

4000

4050

4100



-32

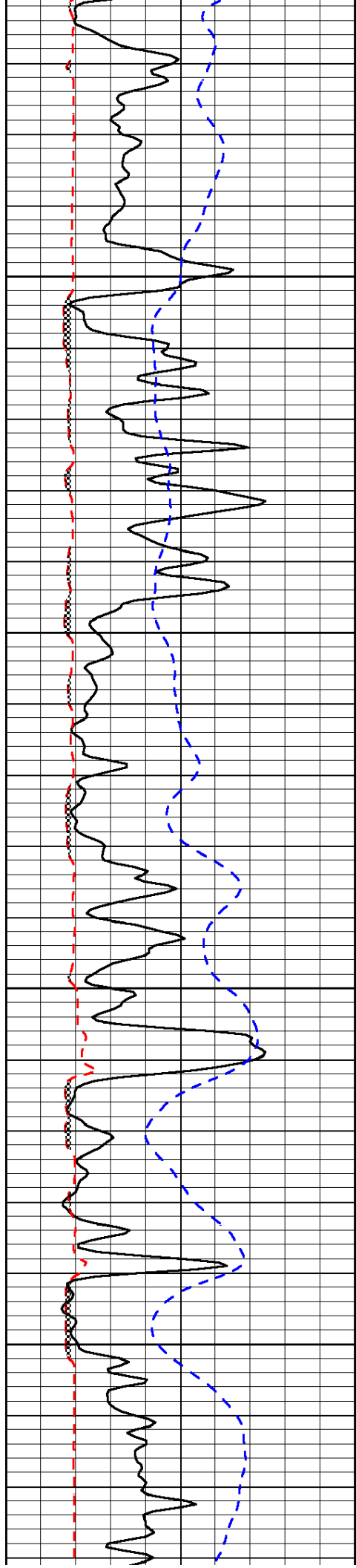
-33

-33

-33

-33



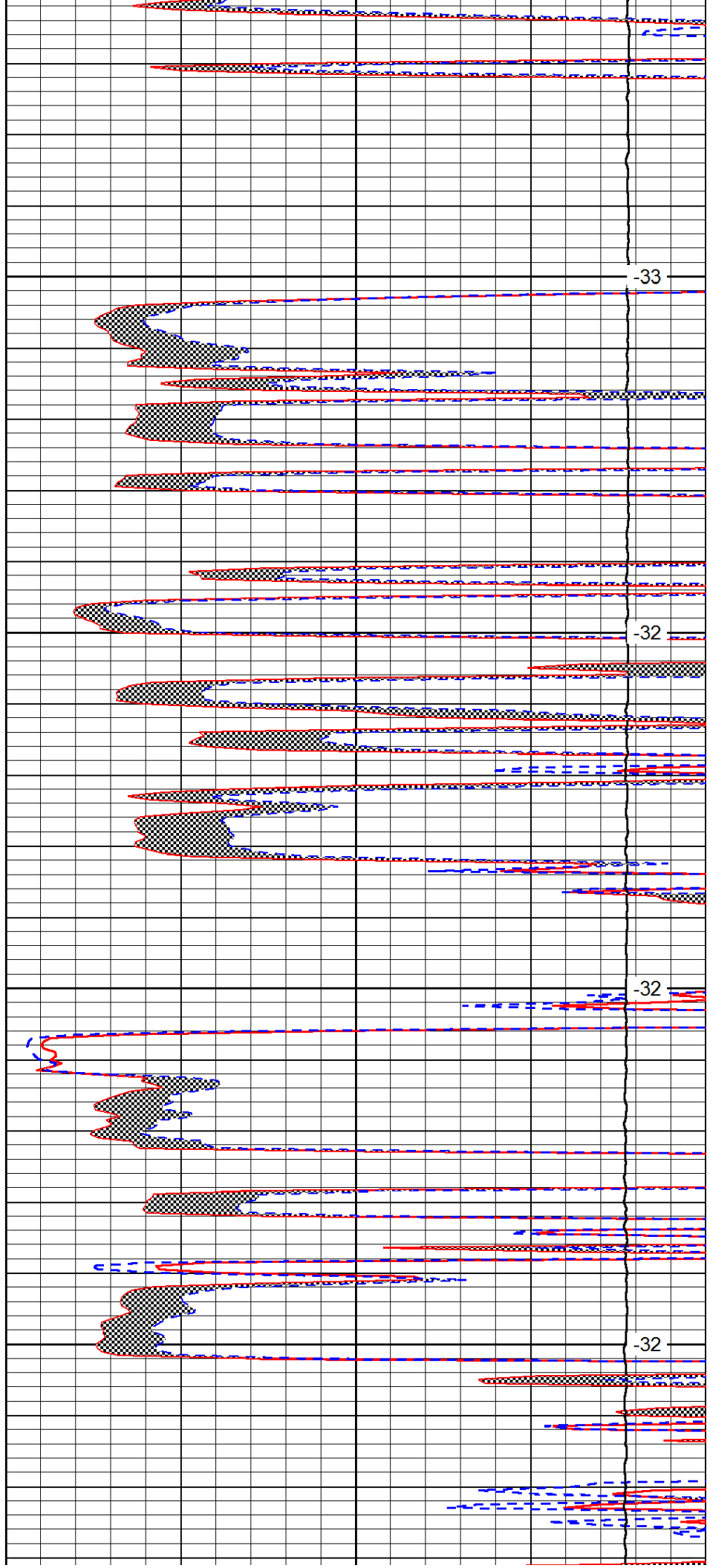


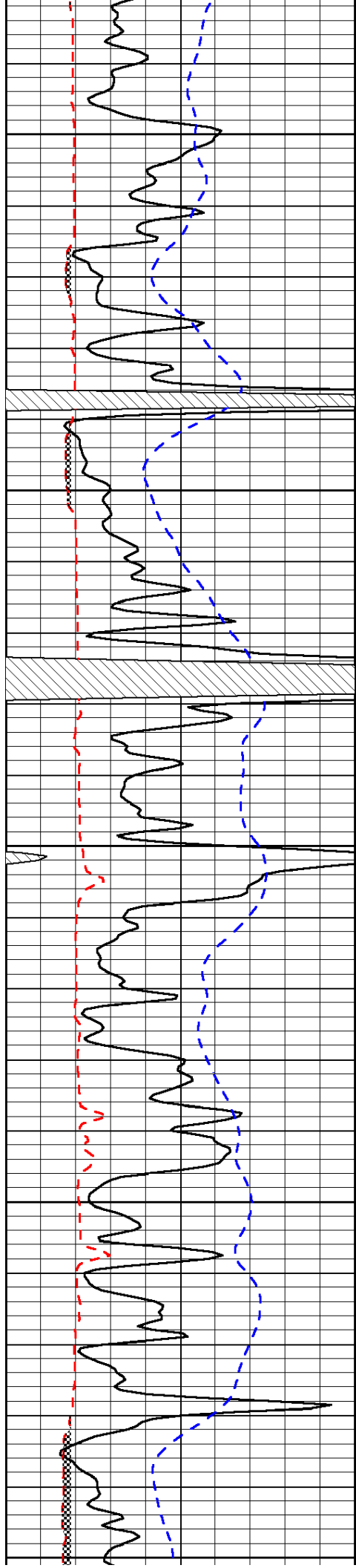
4150

4200

4250

4300





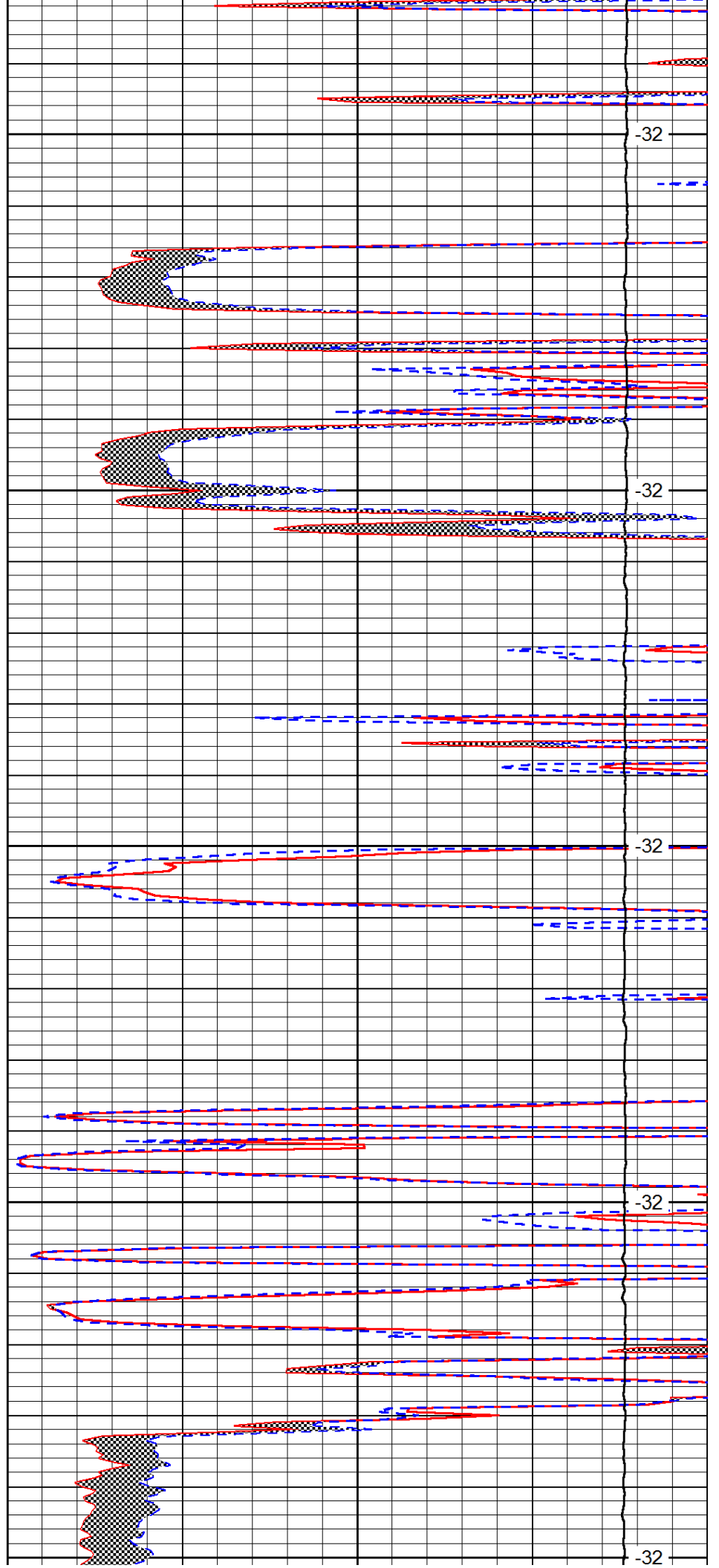
4350

4400

4450

4500

4550



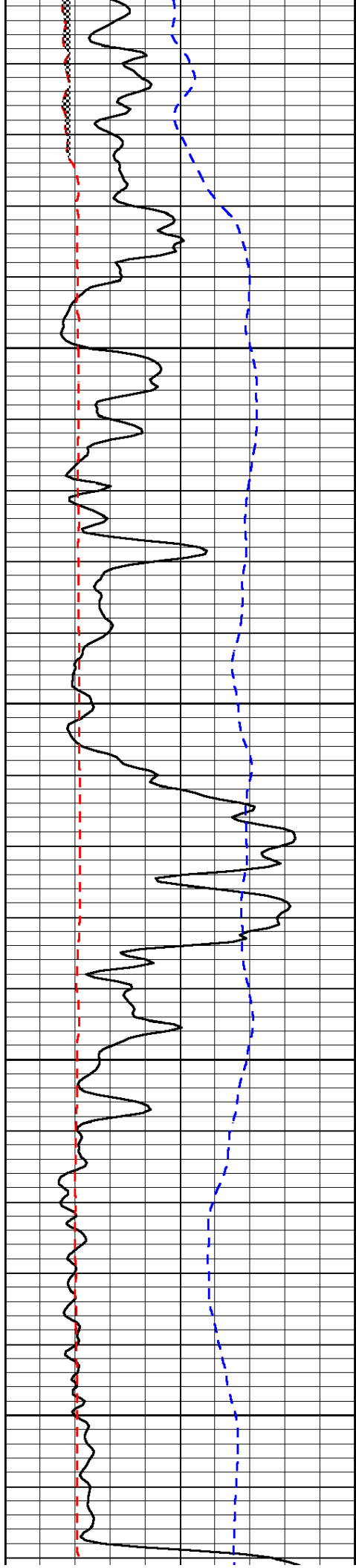
-32

-32

-32

-32

-32

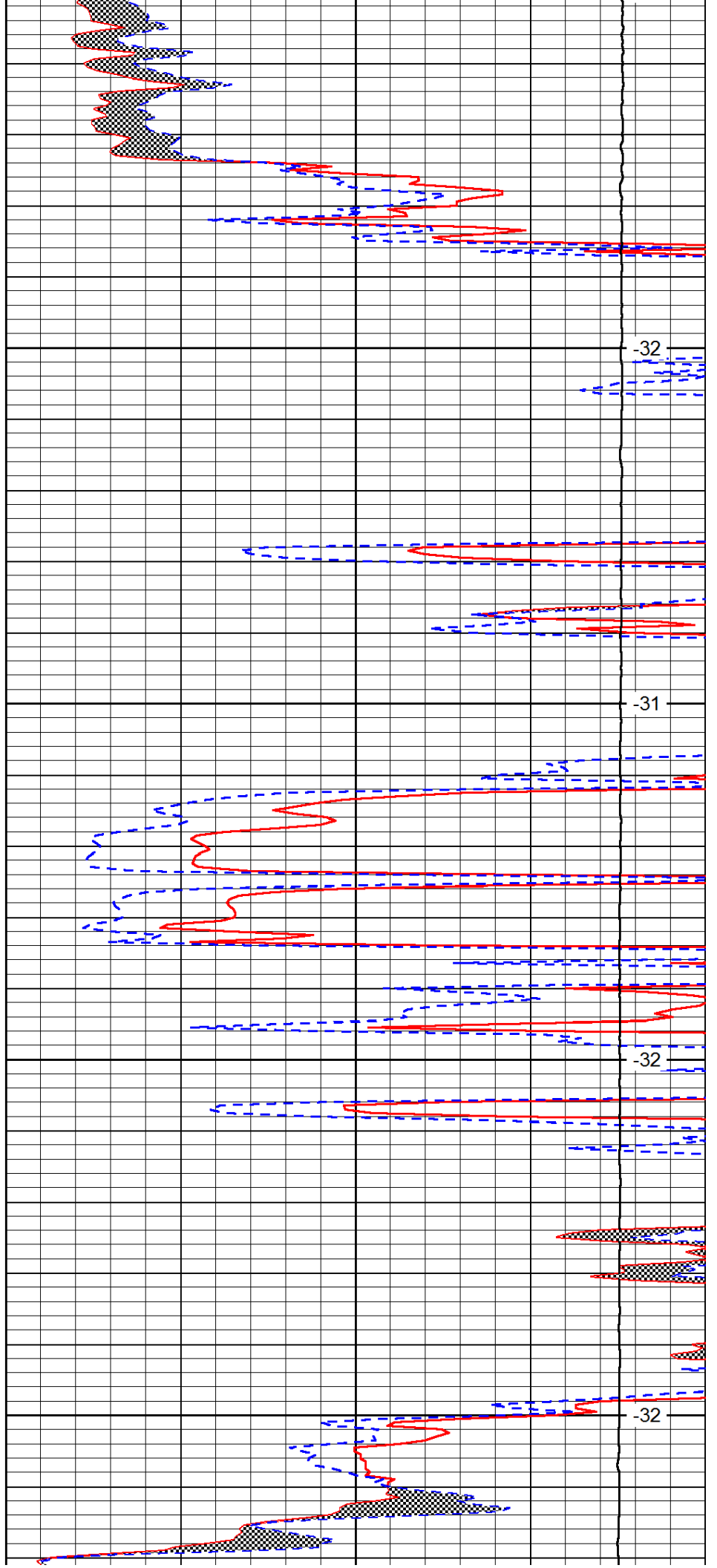


4600

4650

4700

4750

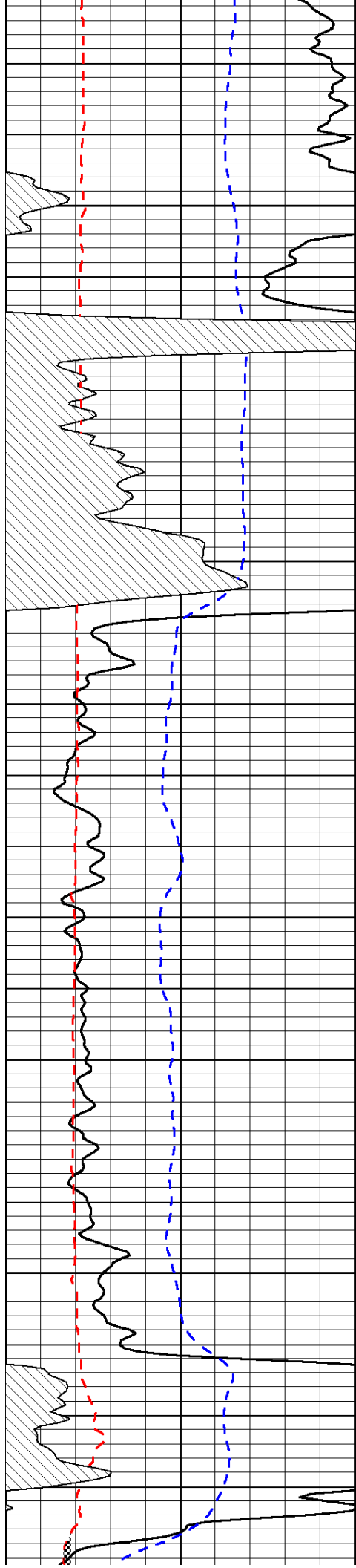


-32

-31

-32

-32

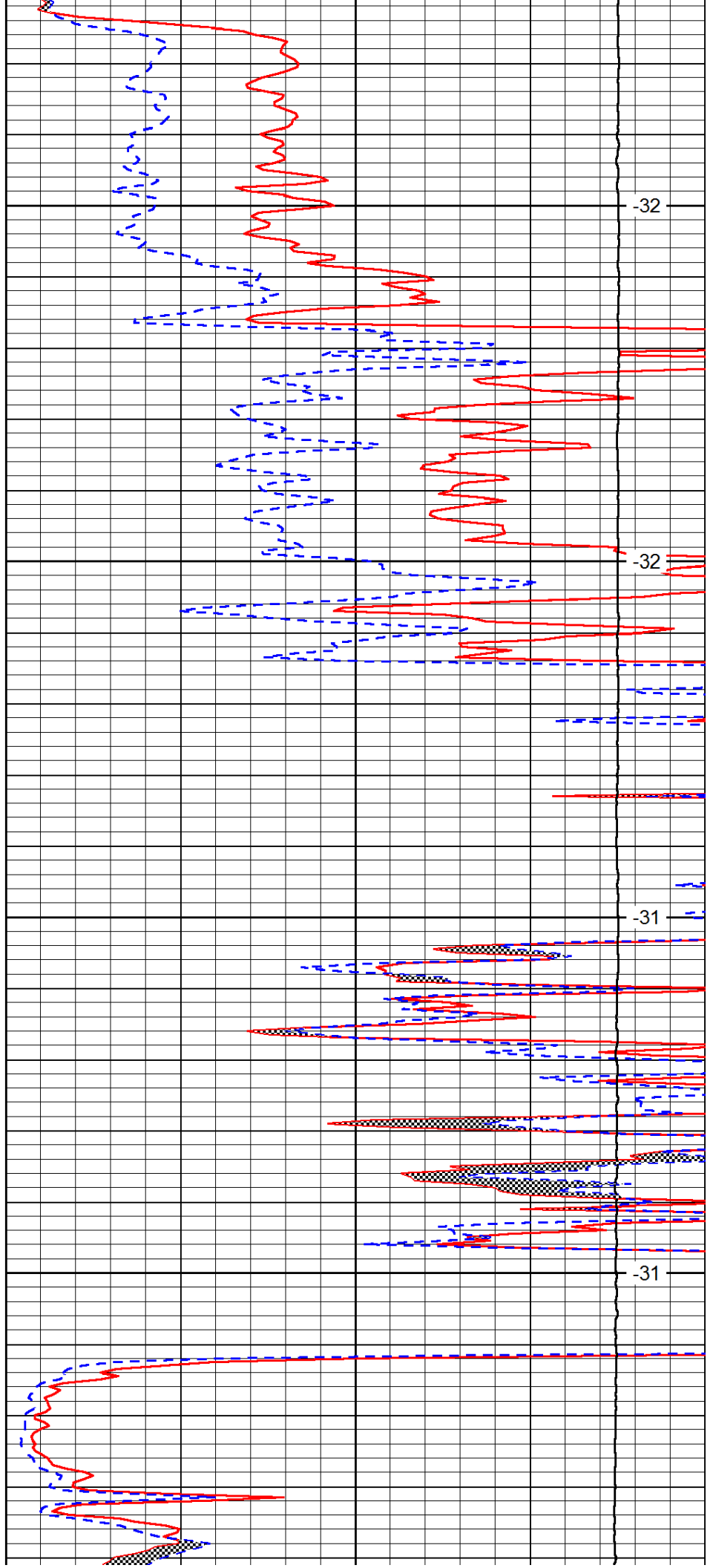


4800

4850

4900

4950

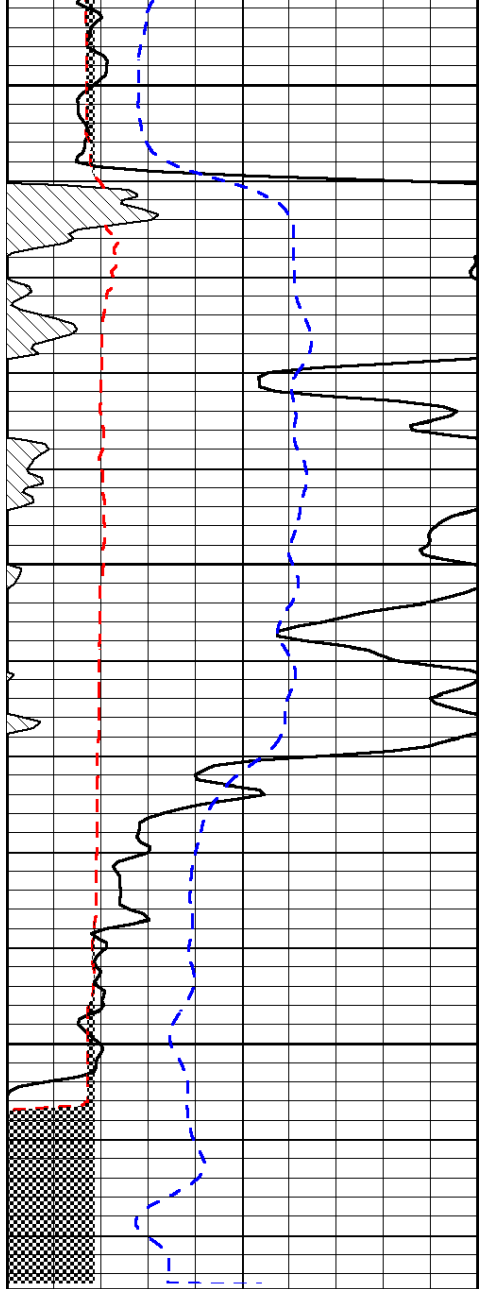


-32

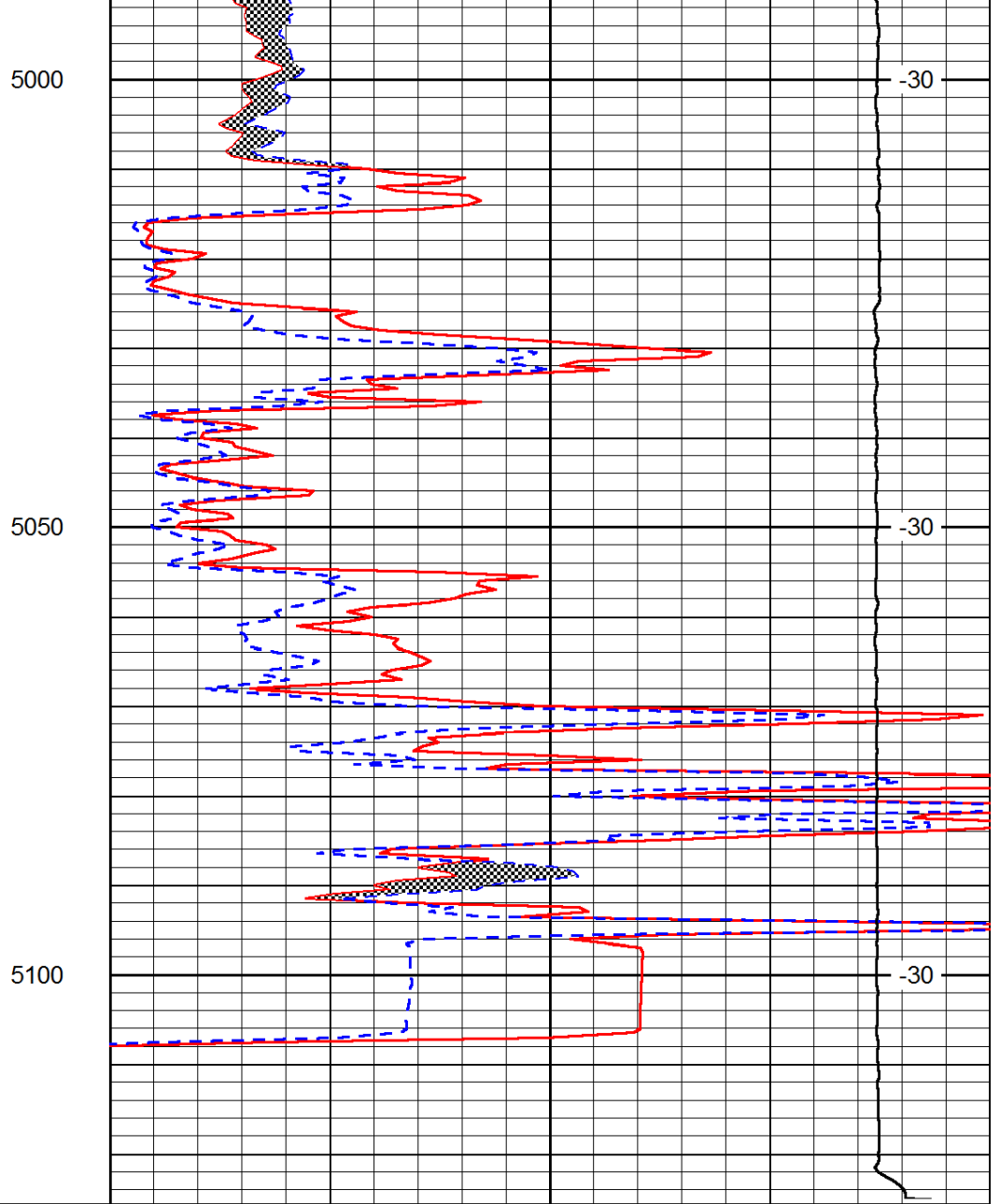
-32

-31

-31



0	Gamma Ray	150
6	Micro Log Caliper (GAPI)	16
-200	SP (mV)	0



0	Micro Inverse 1 X 1	40
0	Micro Normal 2''	40
15000	Line Weight	0

LSPD