



Pioneer Energy Services

Borehole Compensated Sonic Log

15-007-24,139-00-00

API No.	15-007-24,139-00-00		
Company	LB Exploration, Inc.		
Well	Boyd #2		
Field	Barber		
County	State Kansas		
Location	SE NW NW NW 405' FNL & 485' FWL		
Sec: 34	Twp: 32S	Rge: 13W	
Permanent Datum	Ground Level	Elevation 1758	
Log Measured From	Kelly Bushing	13 Ft. Above Perm. Datum	
Drilling Measured From	Kelly Bushing		
Date	3/9/2014		
Run Number	Two		
Type Log	BHC Sonic		
Depth Driller	5120		
Depth Logger	5122		
Bottom Logged Interval	5111		
Top Logged Interval	350		
Type Fluid In Hole	Chemical		
Salinity, PPM CL	7000		
Density	9.5		
Level	Full		
Max. Rec. Temp. F	127		
Operating Rig Time	5 Hours		
Equipment -- Location	108 Hays		
Recorded By	J. Long		
Witnessed By	Steven Petermann		

Other Services
CNL/CDL
MEL/DIL

Elevation
K.B. 1771
D.F. 1758
G.L. 1758

Borehole Record		Casing Record	
Run No.	Bit	From	To
1	12.25	00	353
2	7.875	353	5120

<<< Fold Here >>>

All interpretations are opinions based on inferences from electrical or other measurements and we cannot and do not guarantee the accuracy or correctness of any interpretation, and we shall not, except in the case of gross or willful negligence on our part, be liable or responsible for any loss, costs, damages, or expenses incurred or sustained by anyone resulting from any interpretation made by any of our officers, agents or employees. These interpretations are also subject to our general terms and conditions set out in our current Price Schedule.

Comments

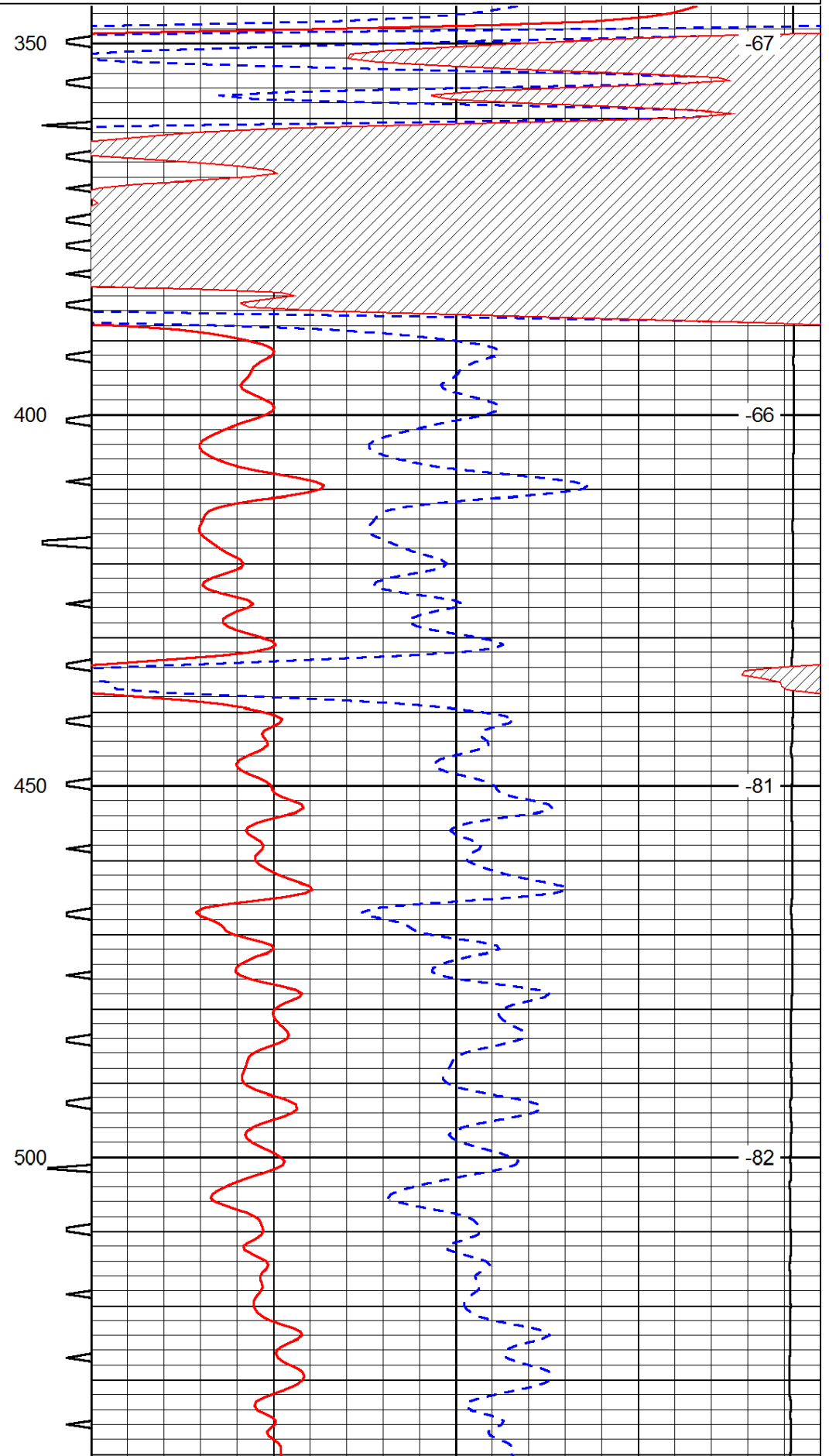
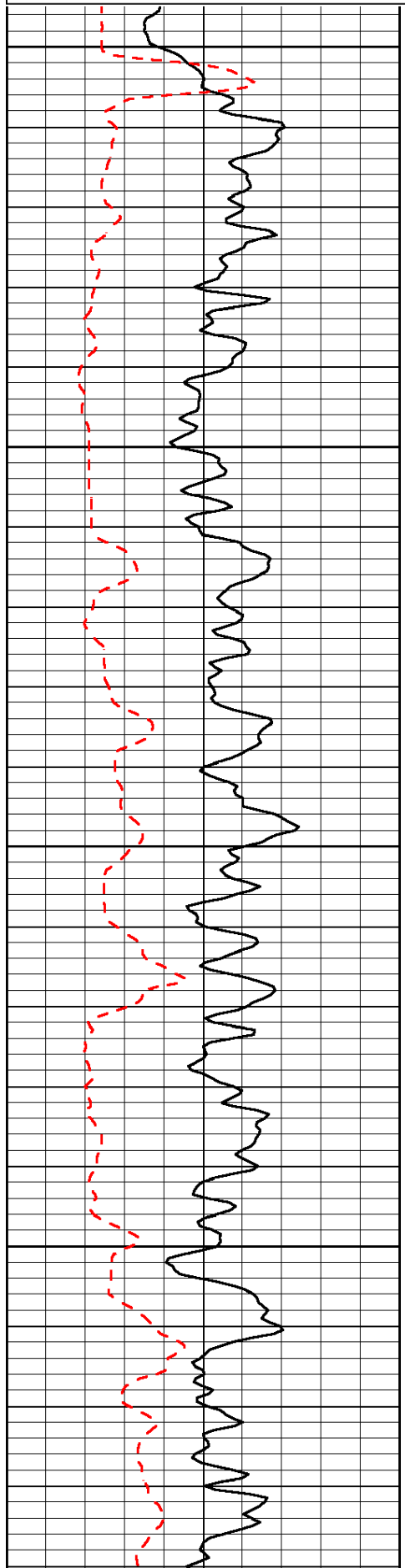
Thank you for using Pioneer Energy Services
www.pioneerenergy.com
785 625 3858

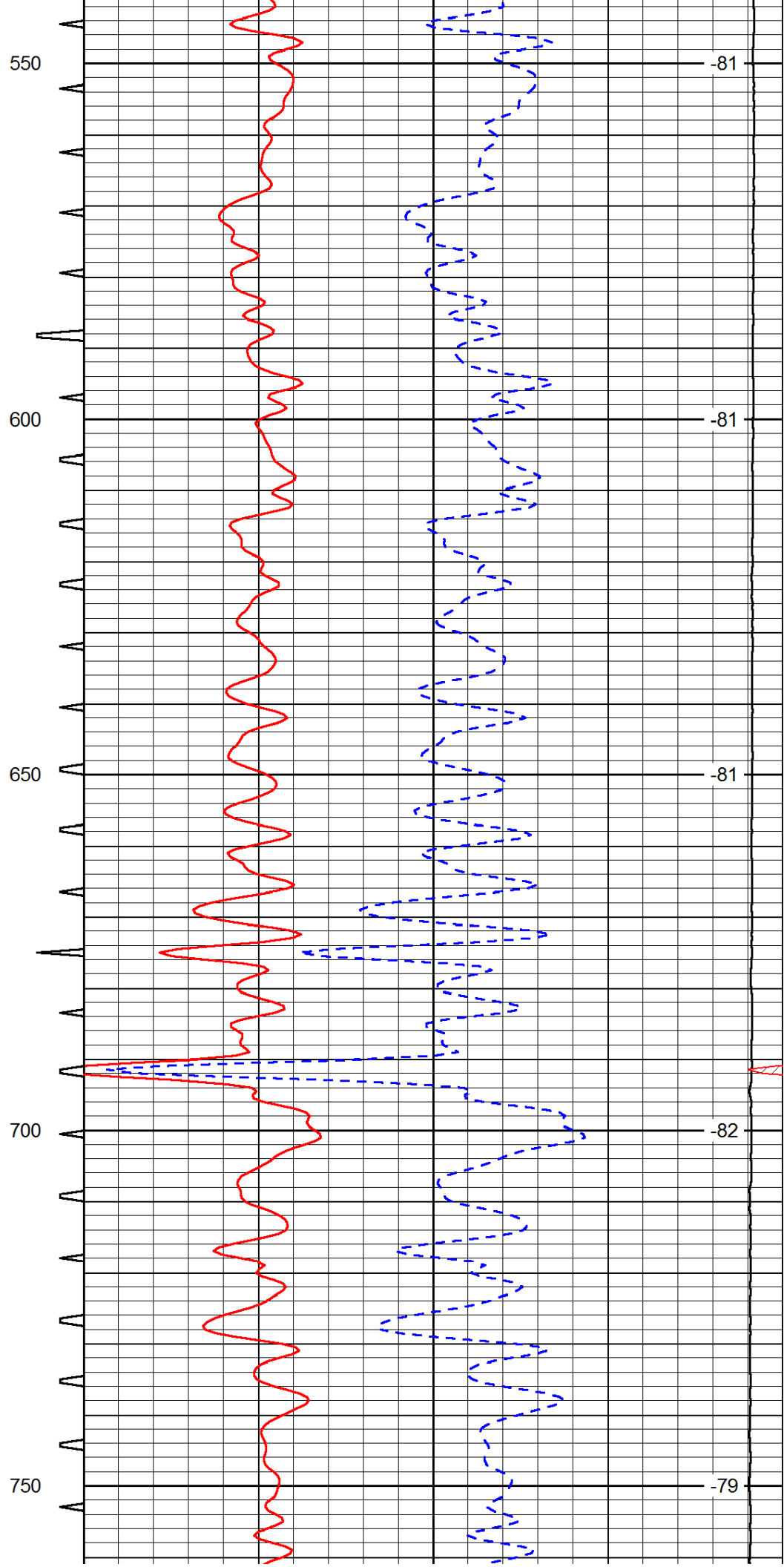
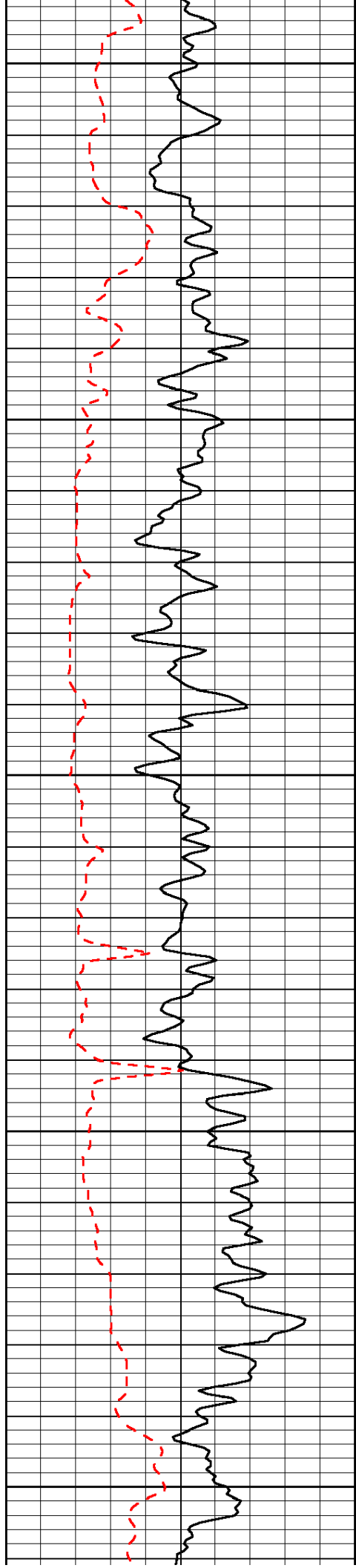
Medicine Lodge, 6 West to Bitter Creek Road, 1 1/2 South, East Into (Left @ Fork)

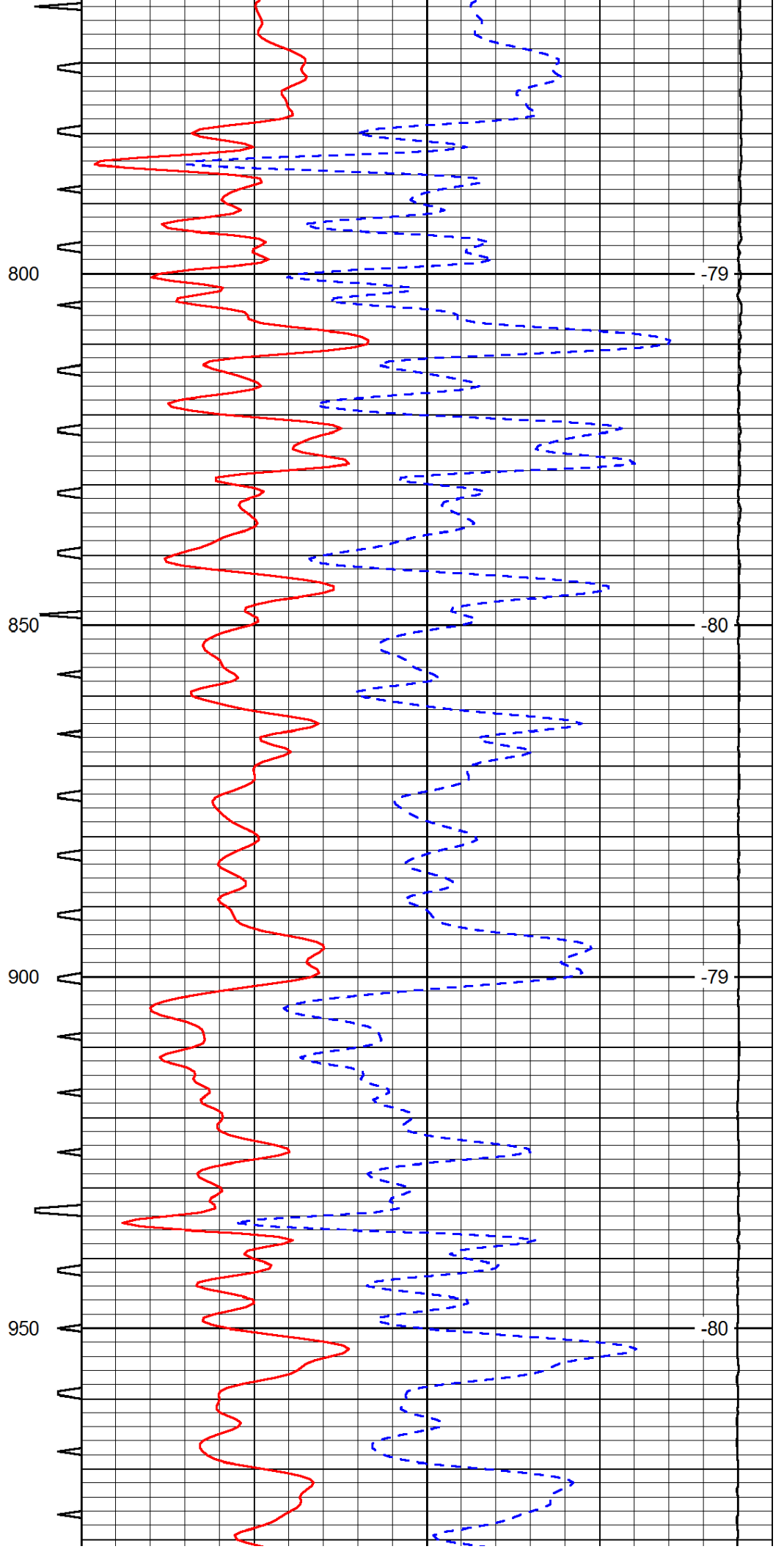
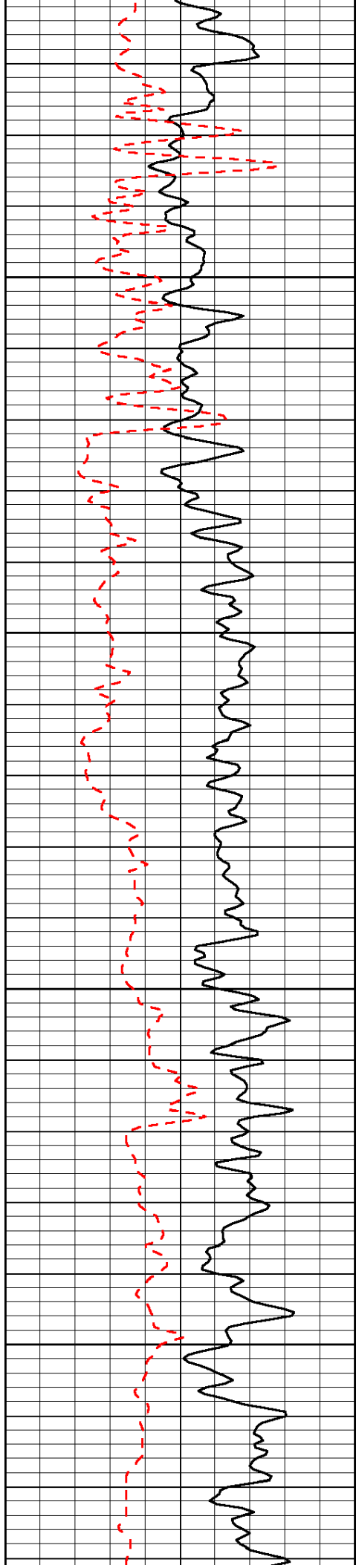
Database File: c:\warrior\data\lb_exp_boyd #2\lbexploration_boyd_2hd.db
 Dataset Pathname: dil/lbstock
 Presentation Format: sonic
 Dataset Creation: Sun Mar 09 10:26:33 2014
 Charted by: Depth in Feet scaled 1:240

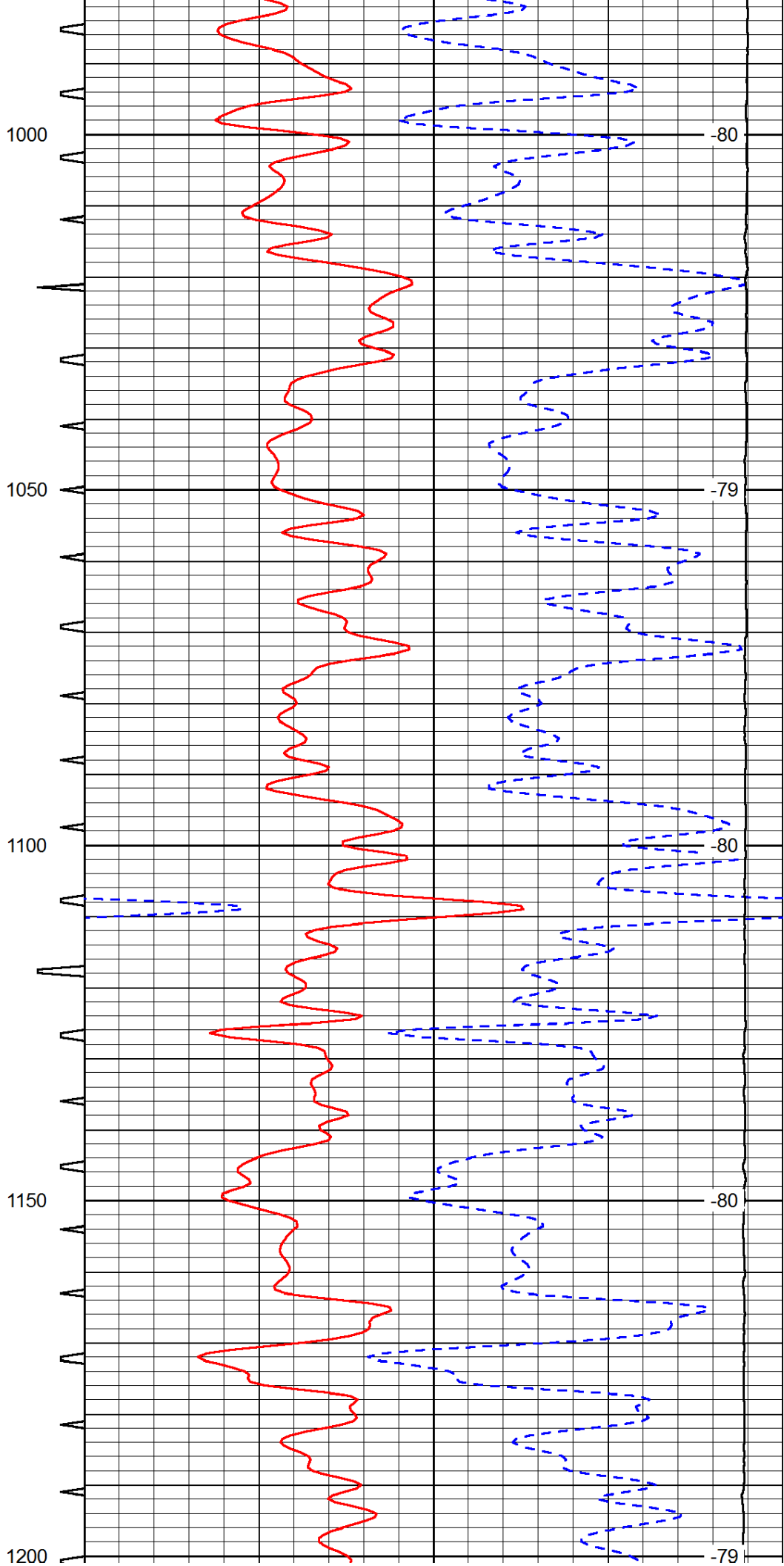
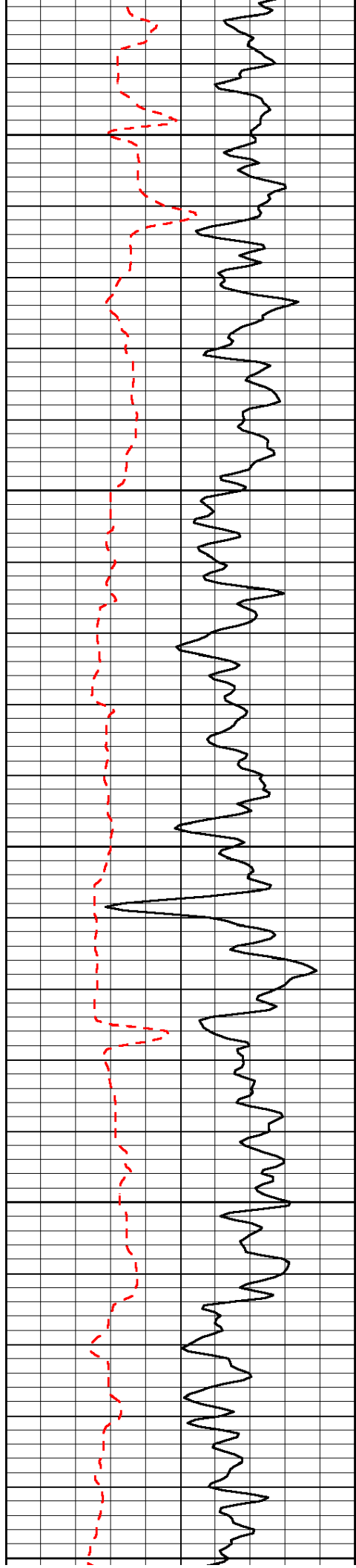
0	Gamma Ray	150	Sonic Int	140	Delta Time (usec/ft)	40
150	Gamma Ray	300	5	0	SPOR	-10
6	Caliper (GAPI)	16		15000	LTEN (lb)	0

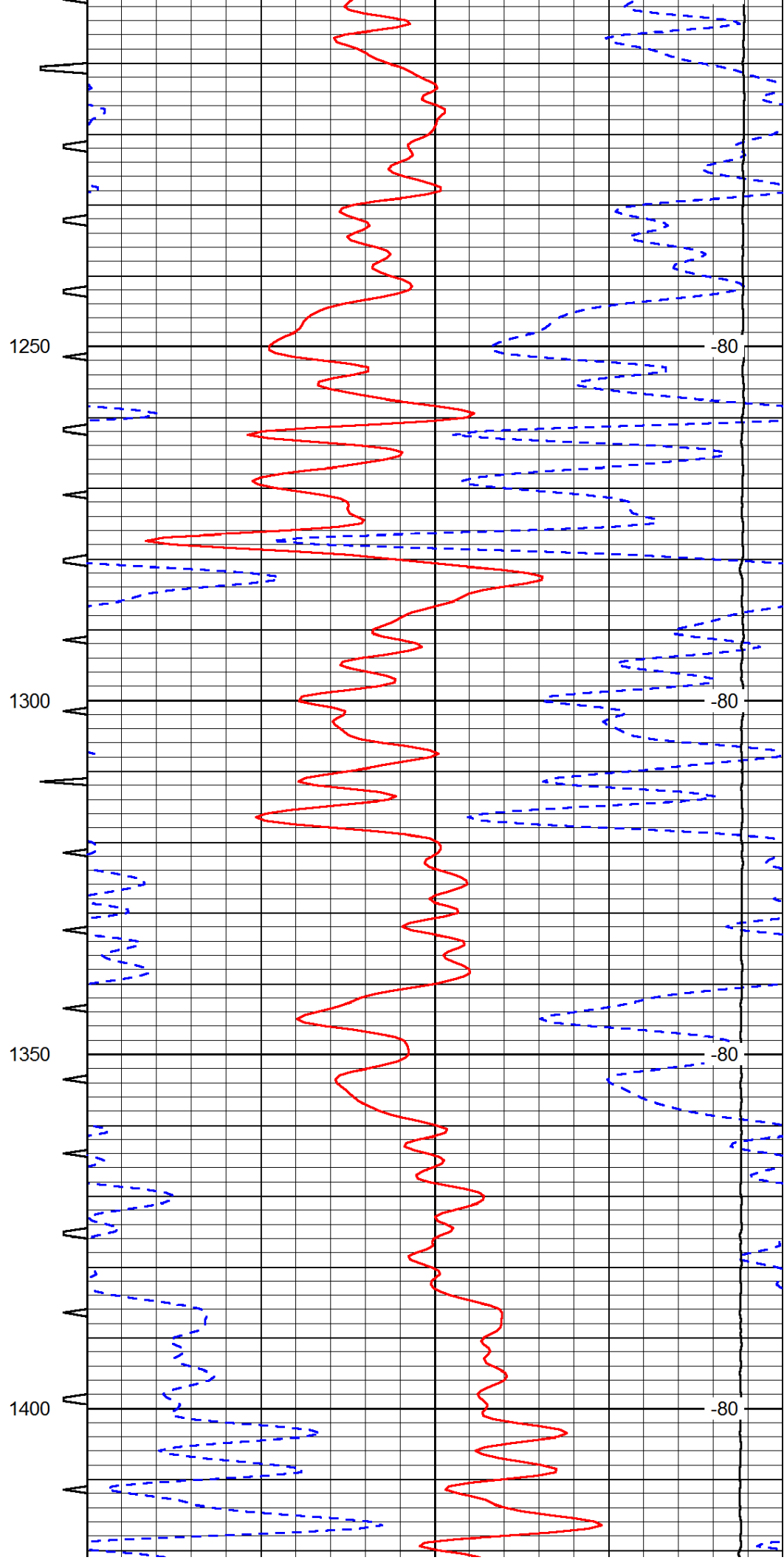
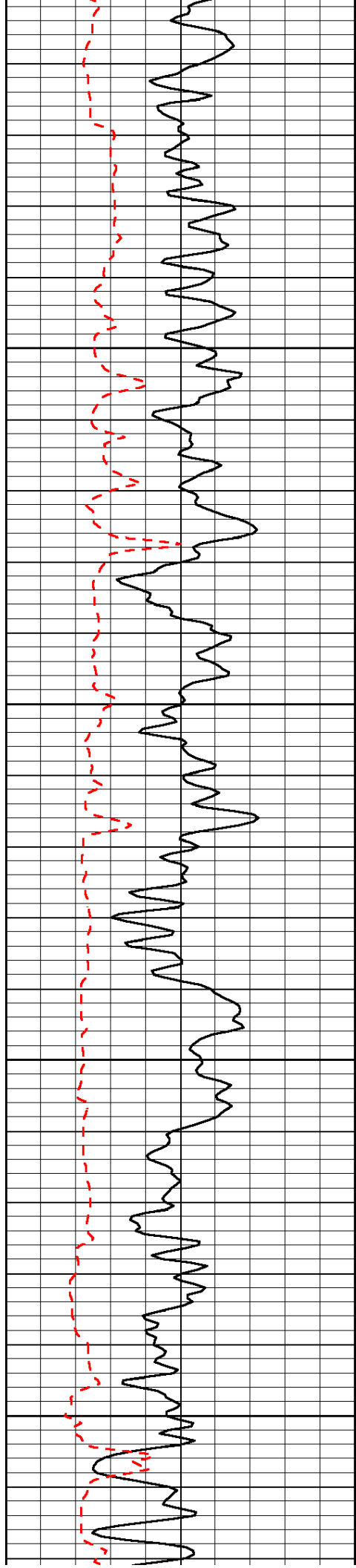
LSPD

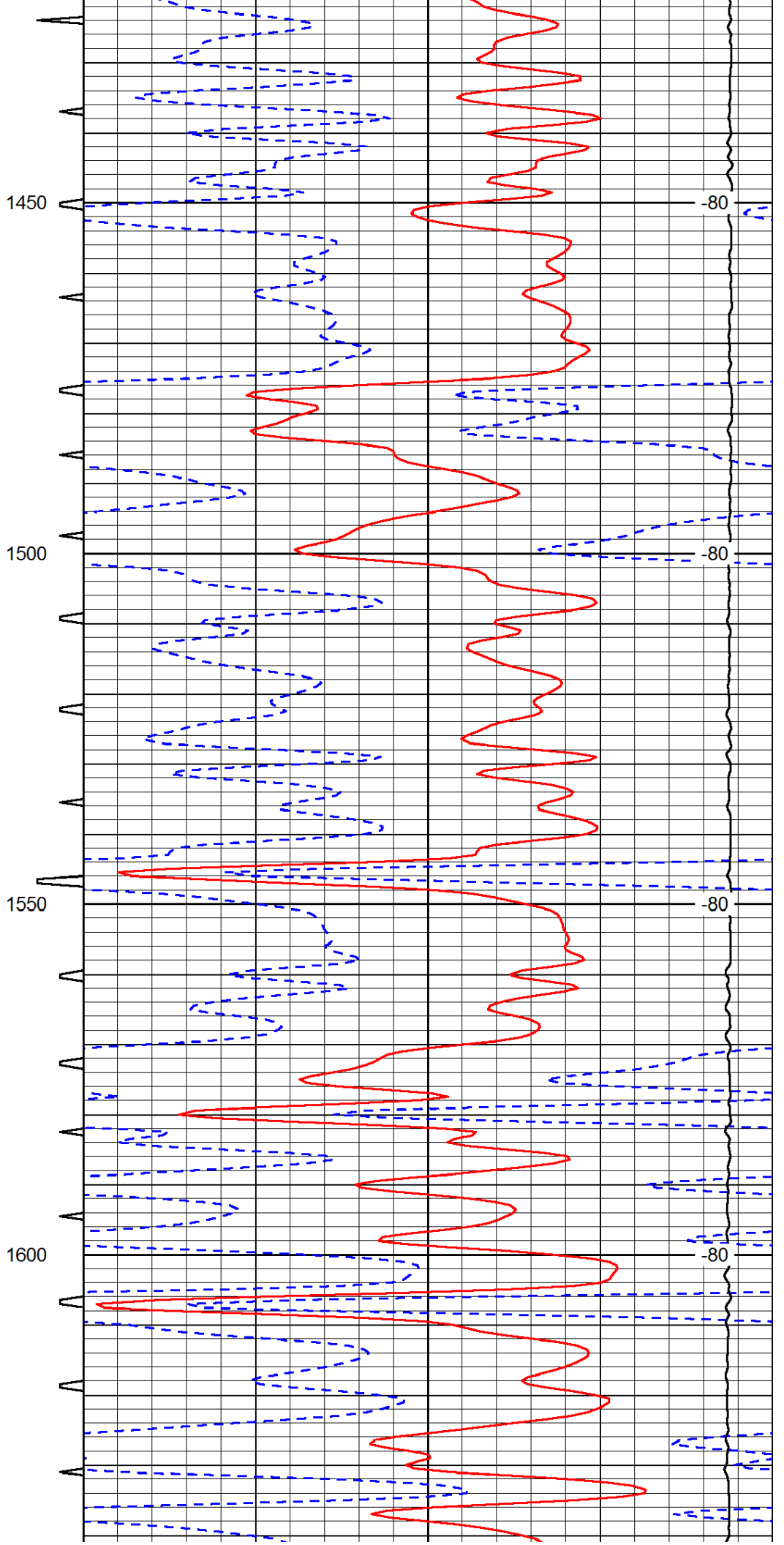
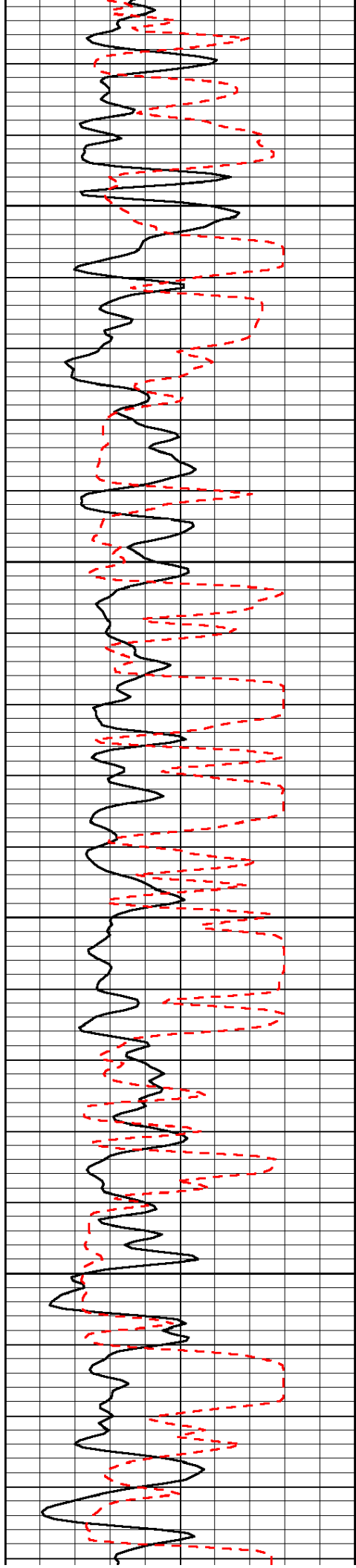


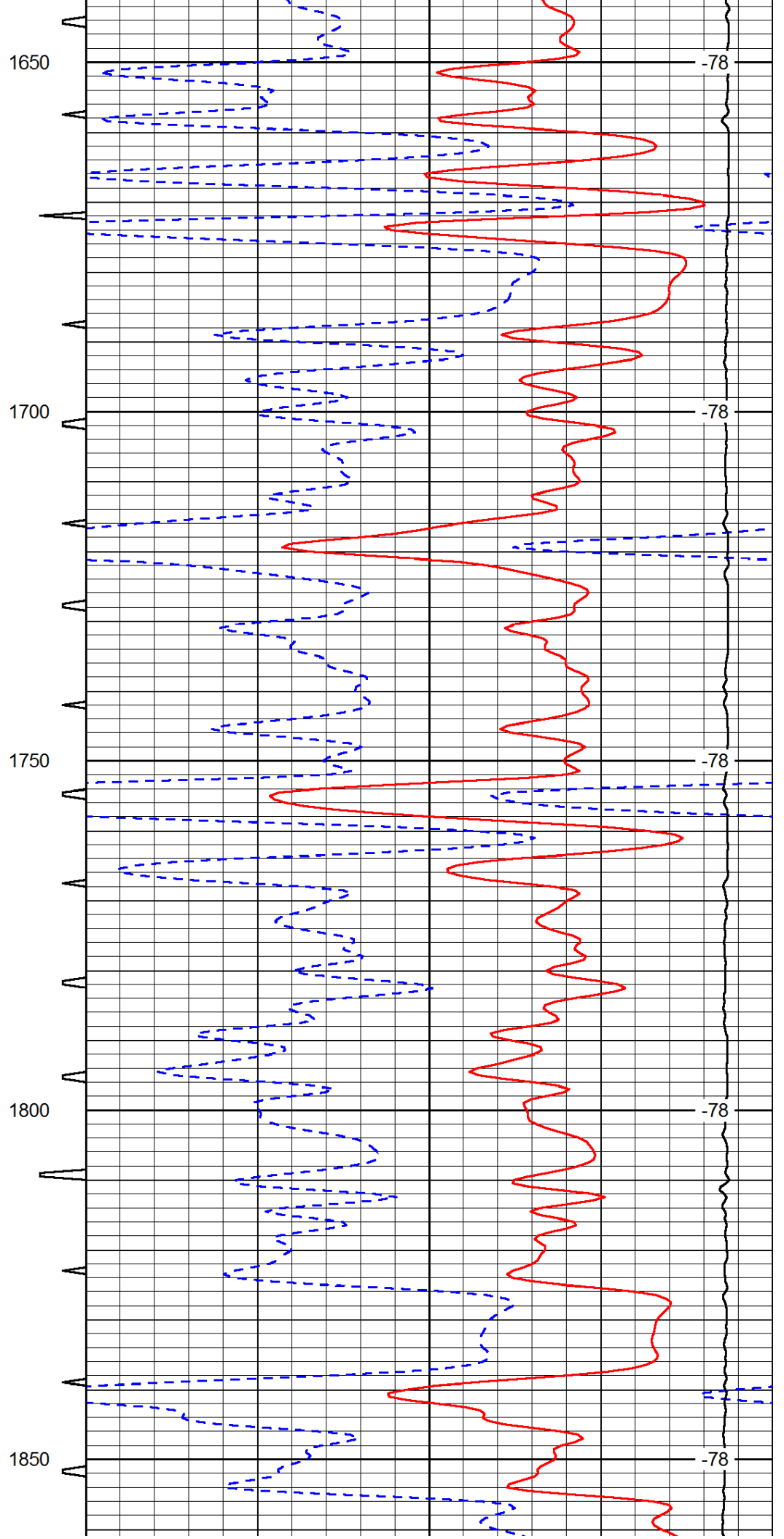
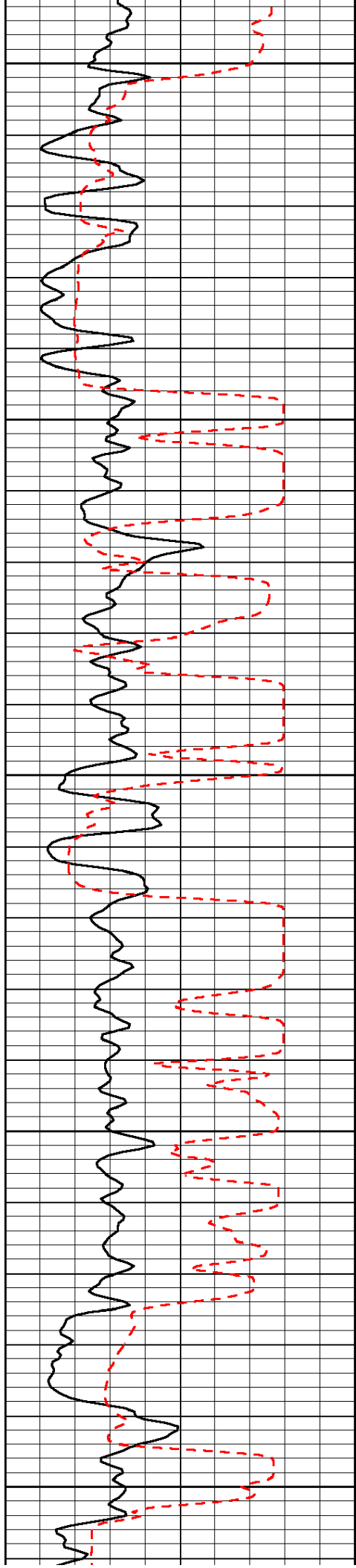


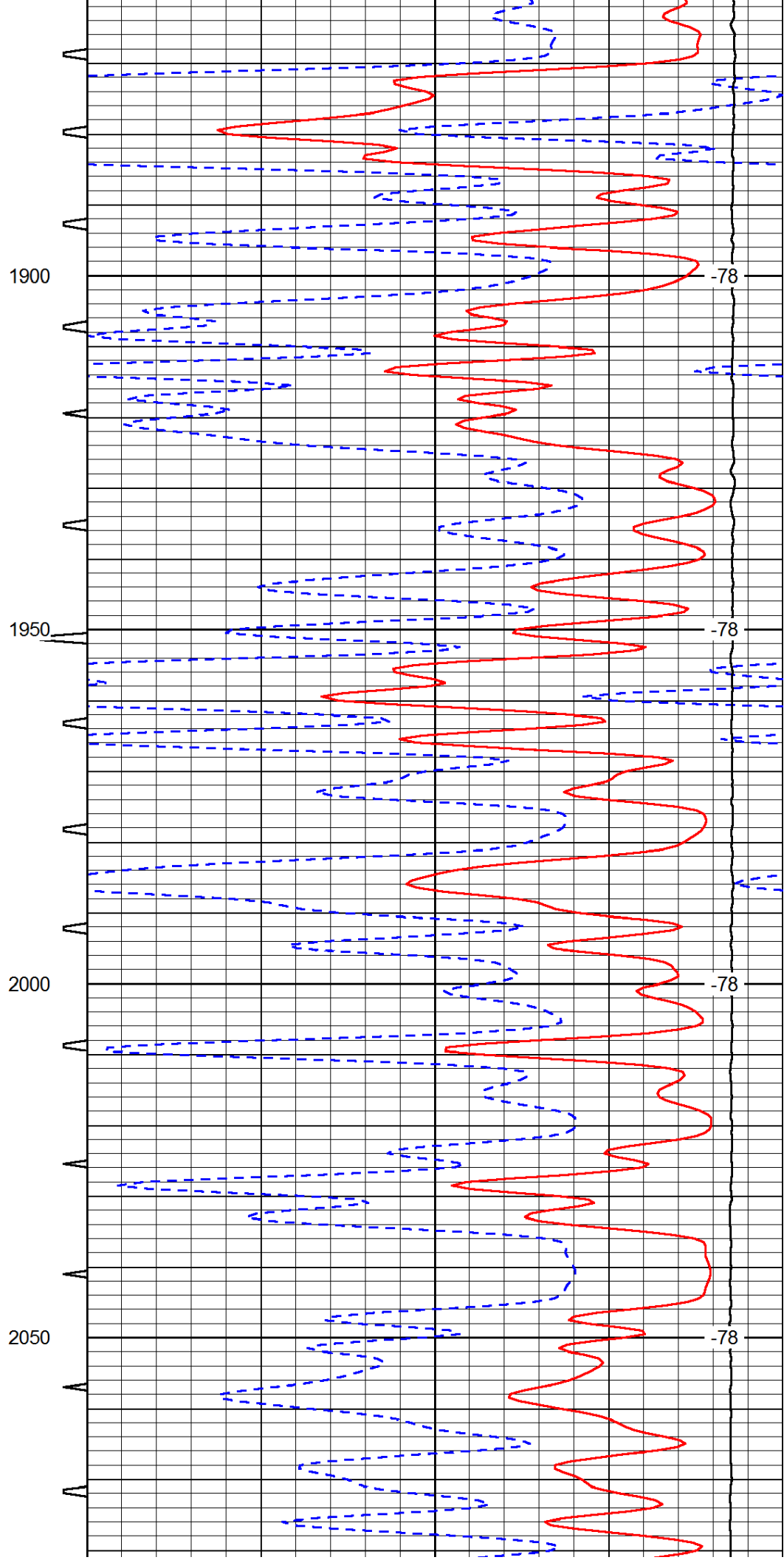
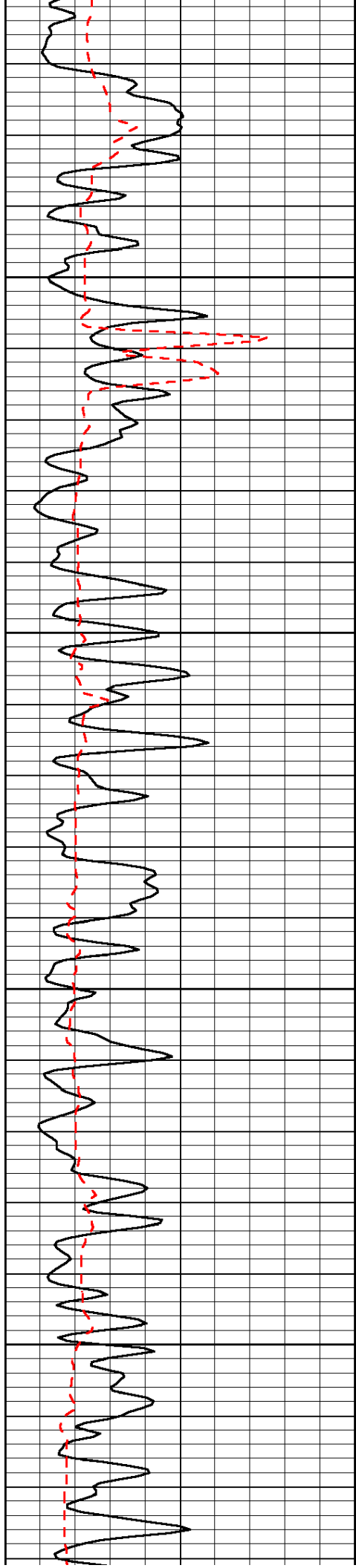


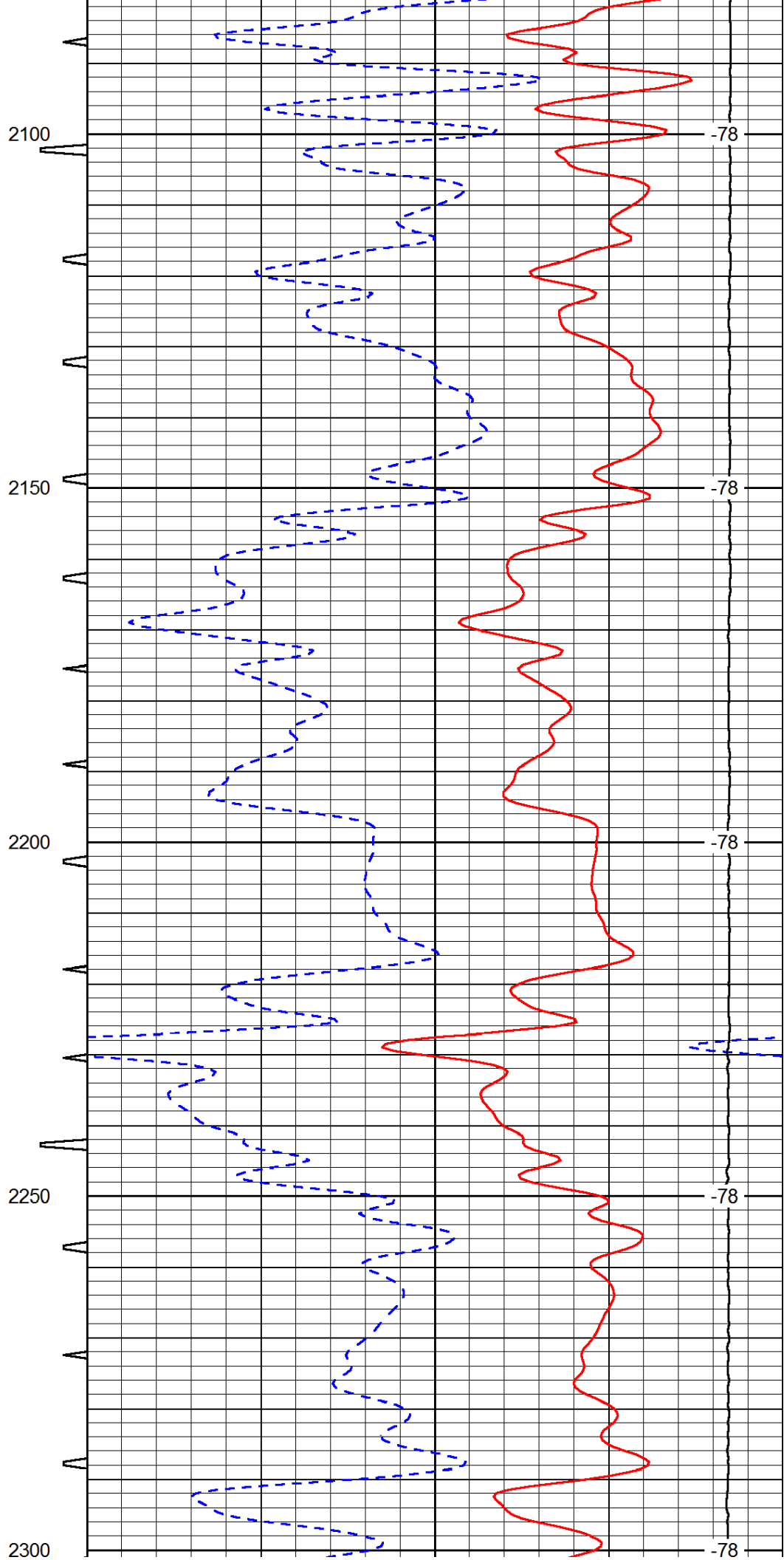
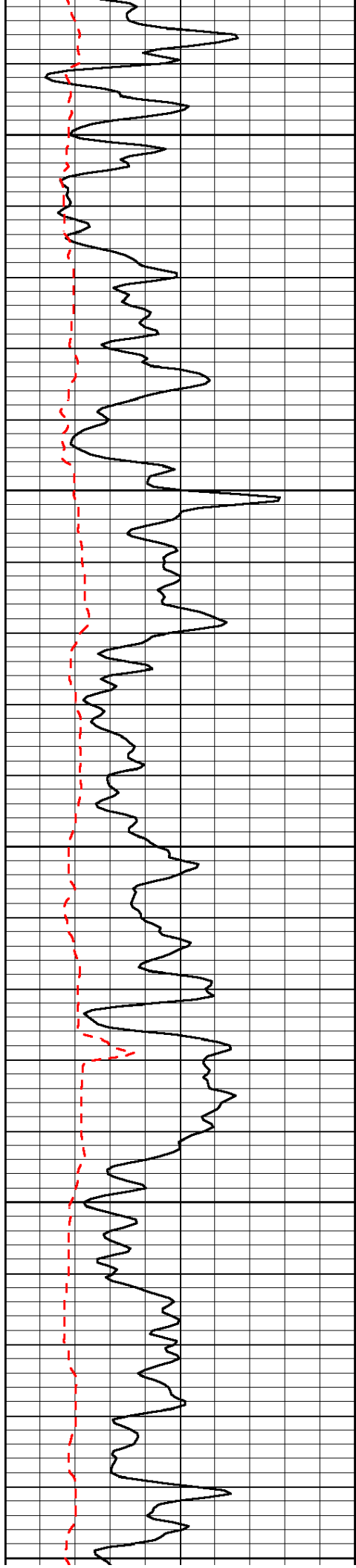


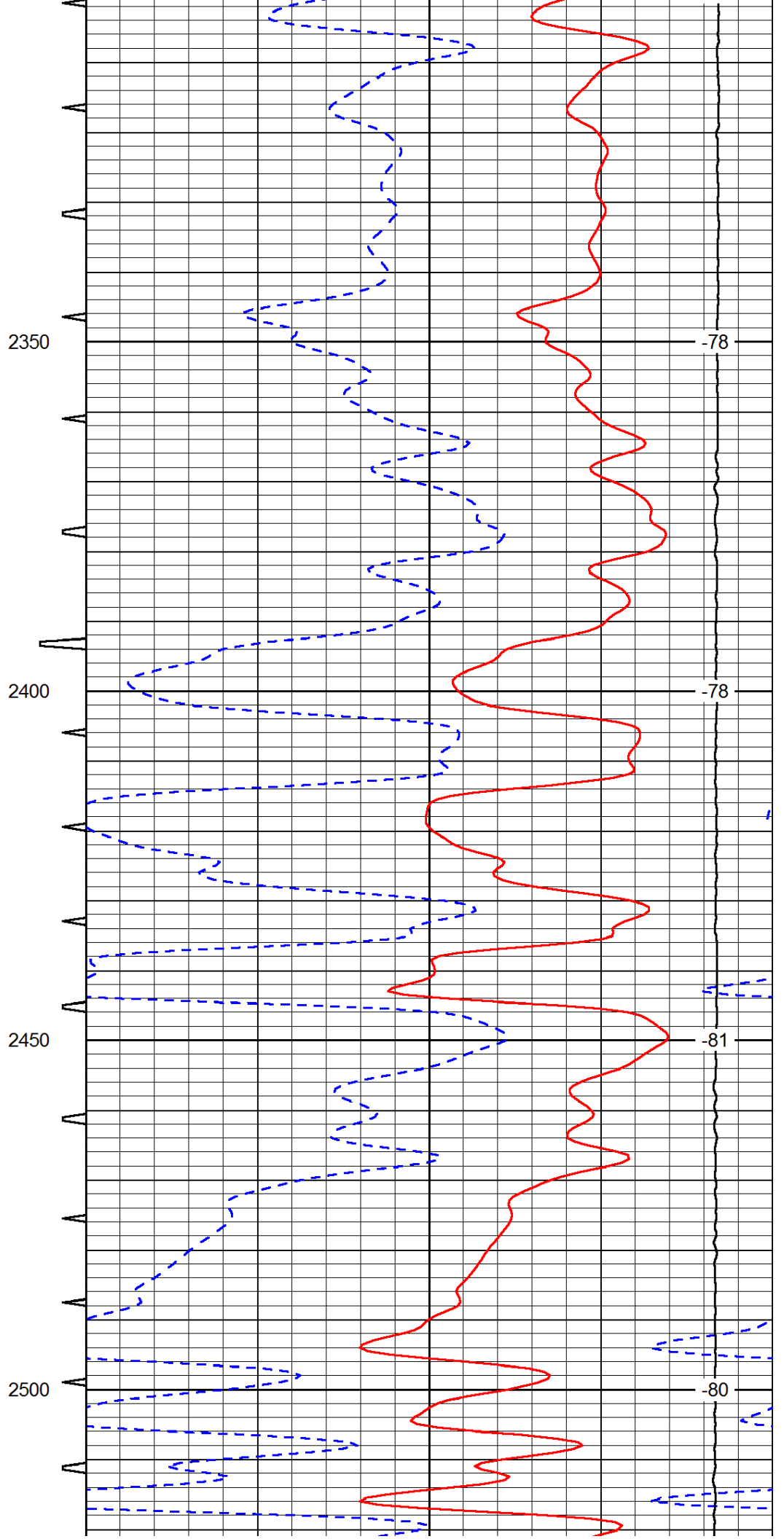
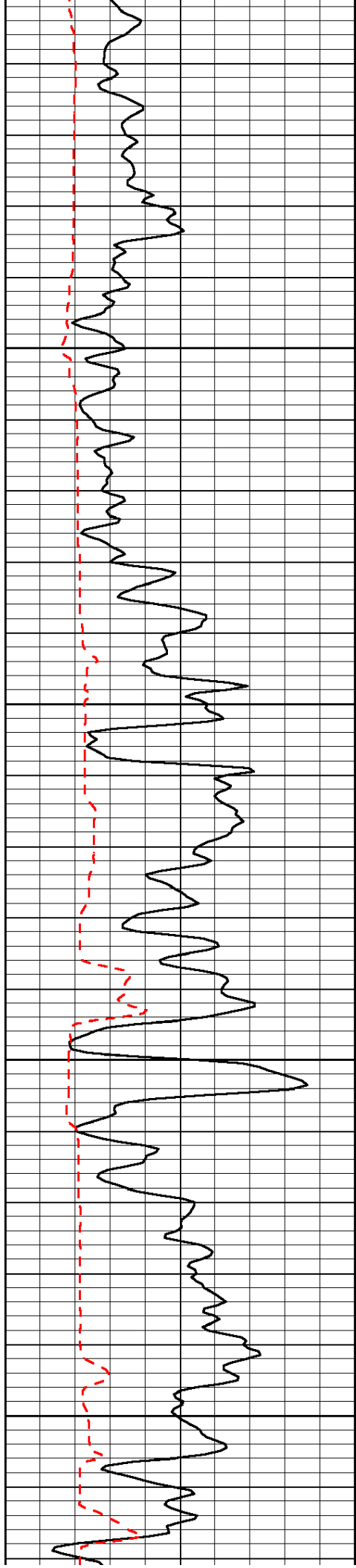


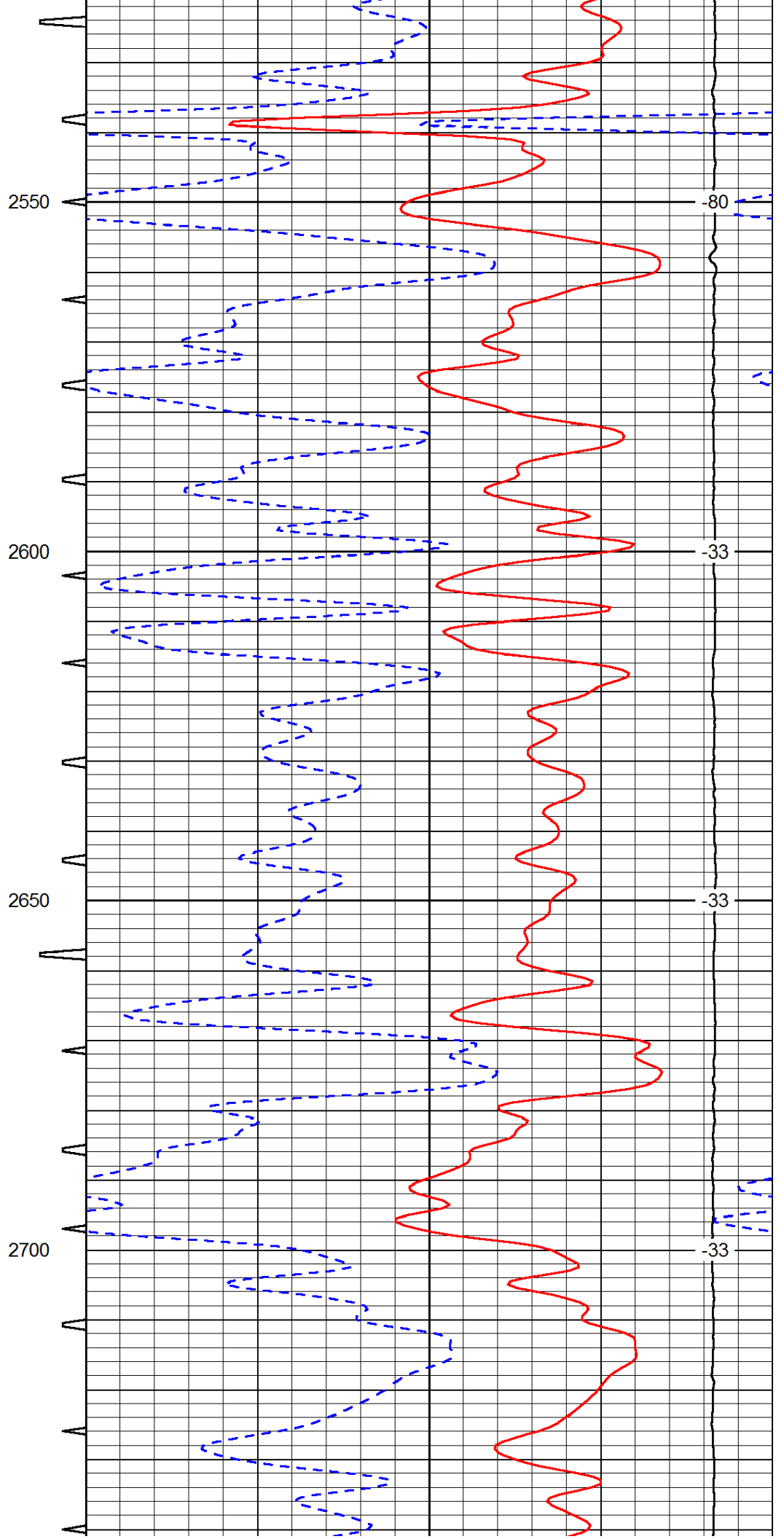
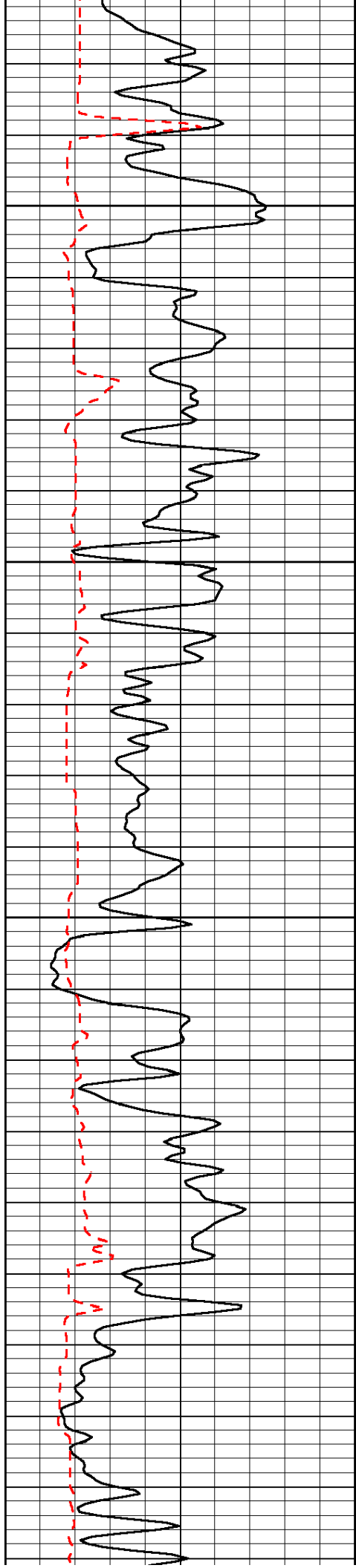


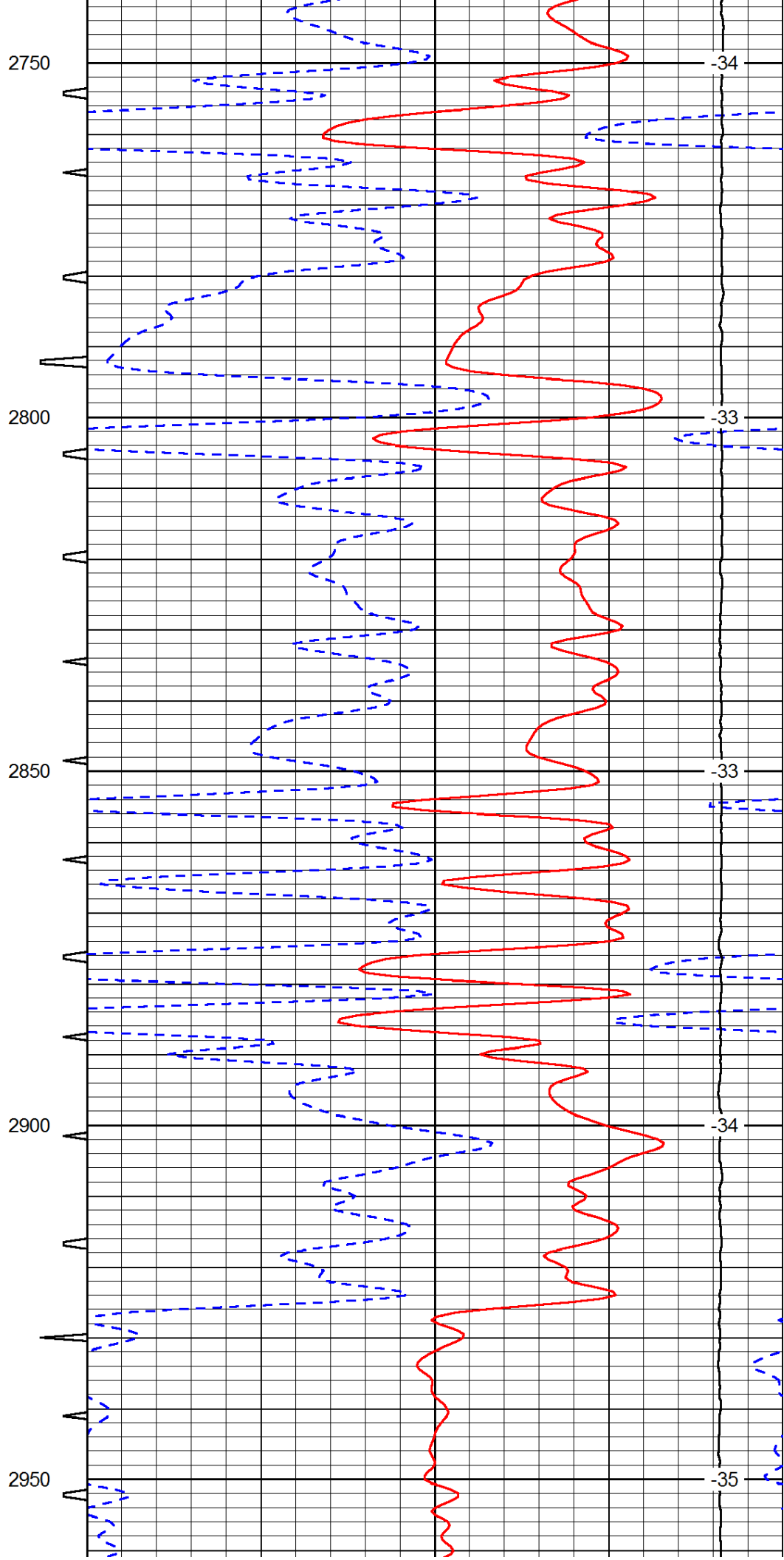
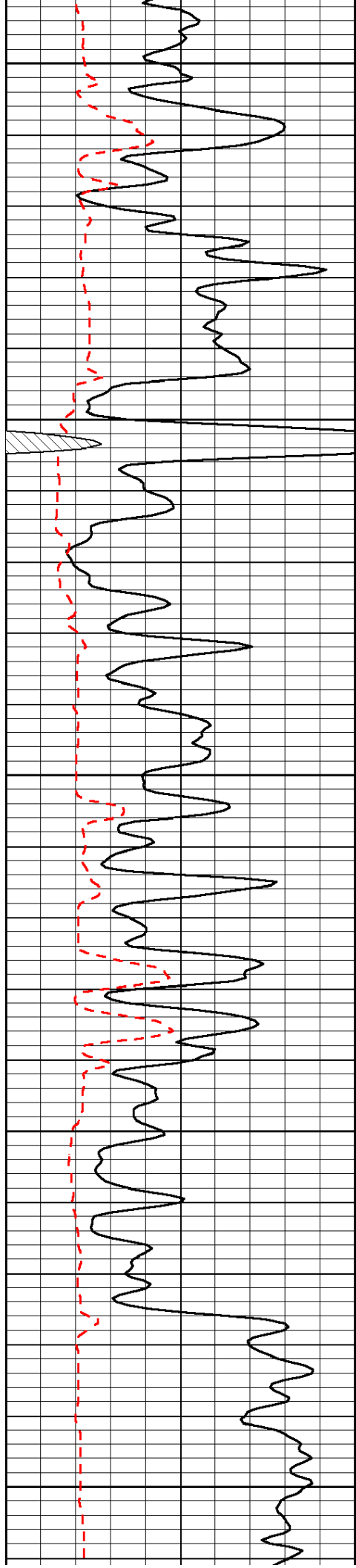


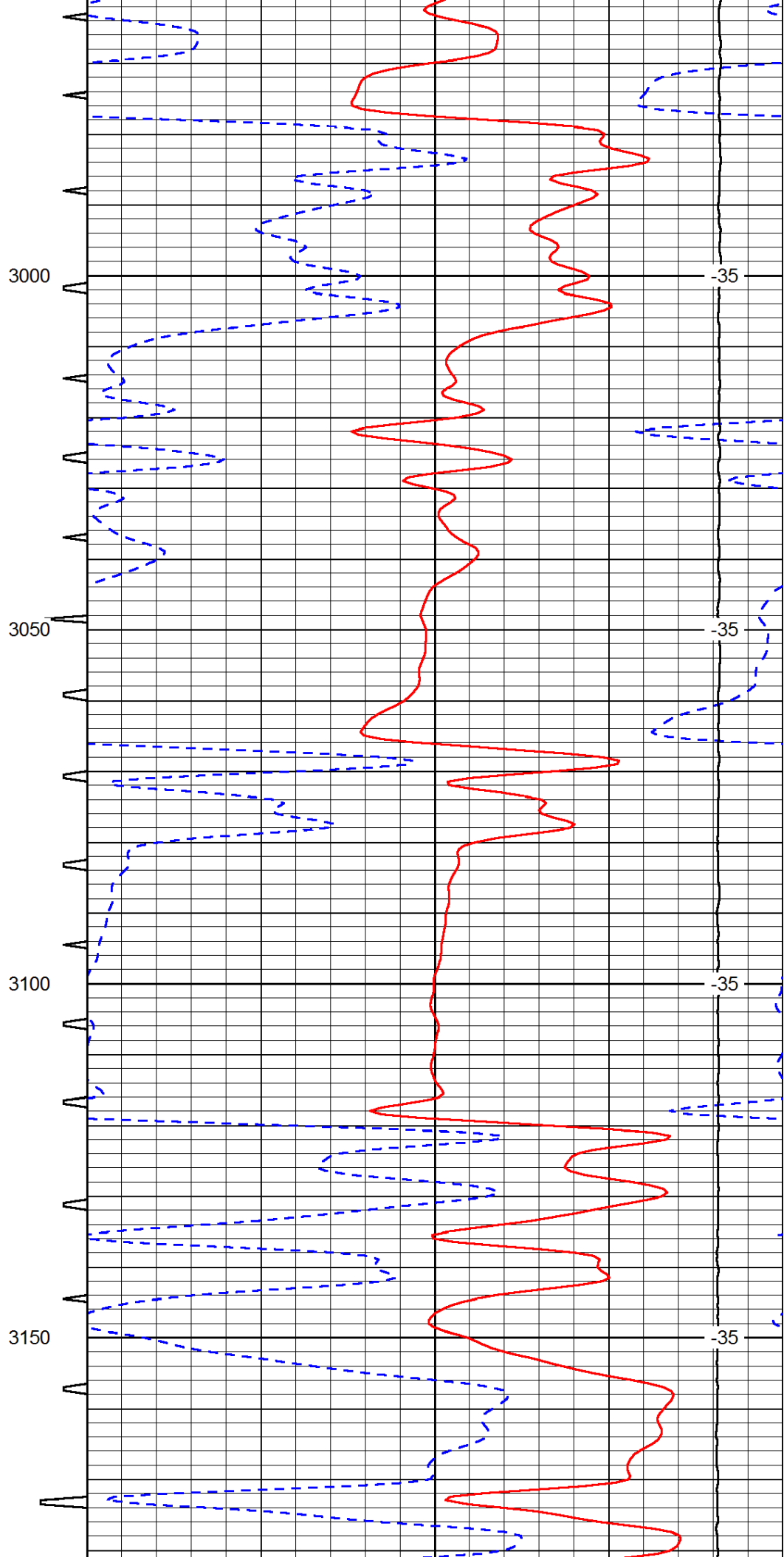
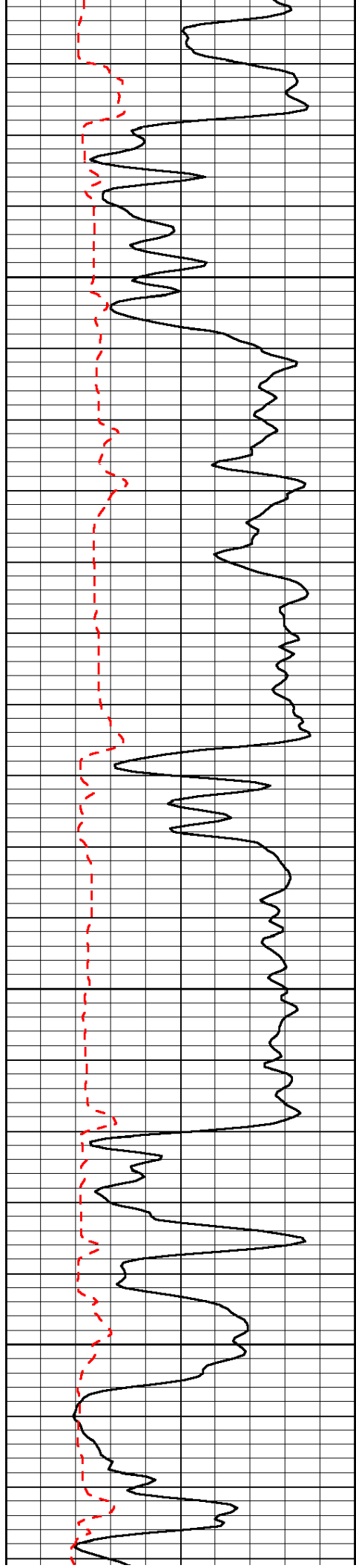


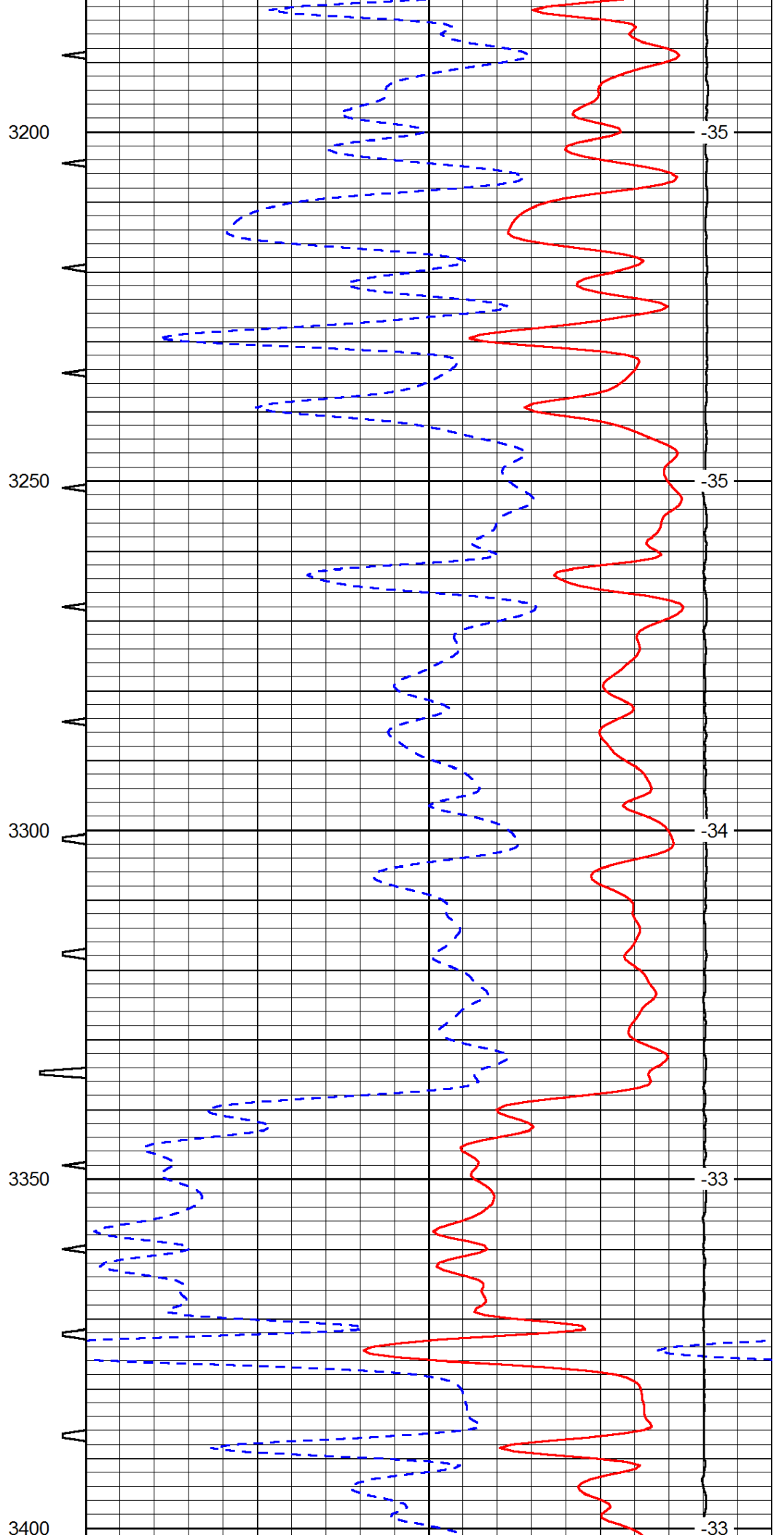
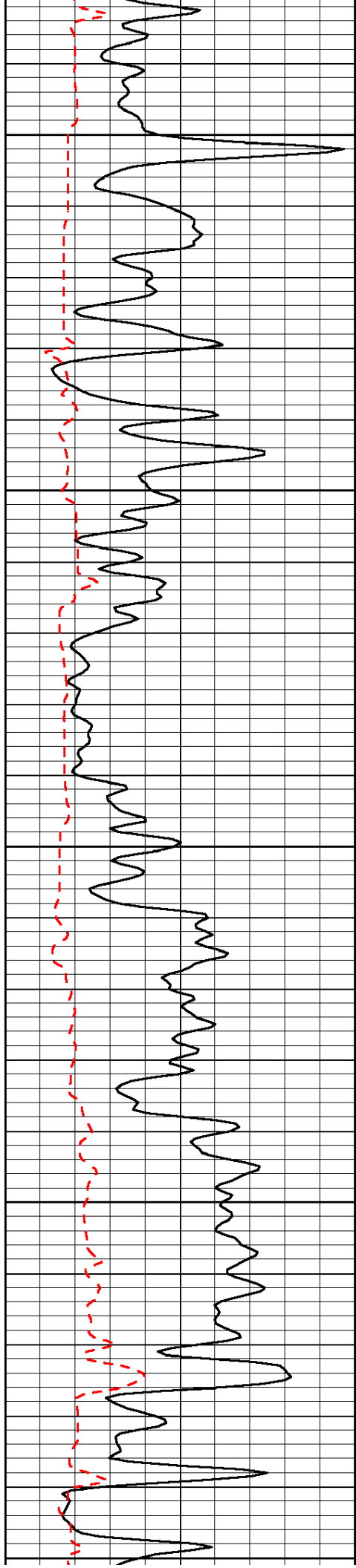


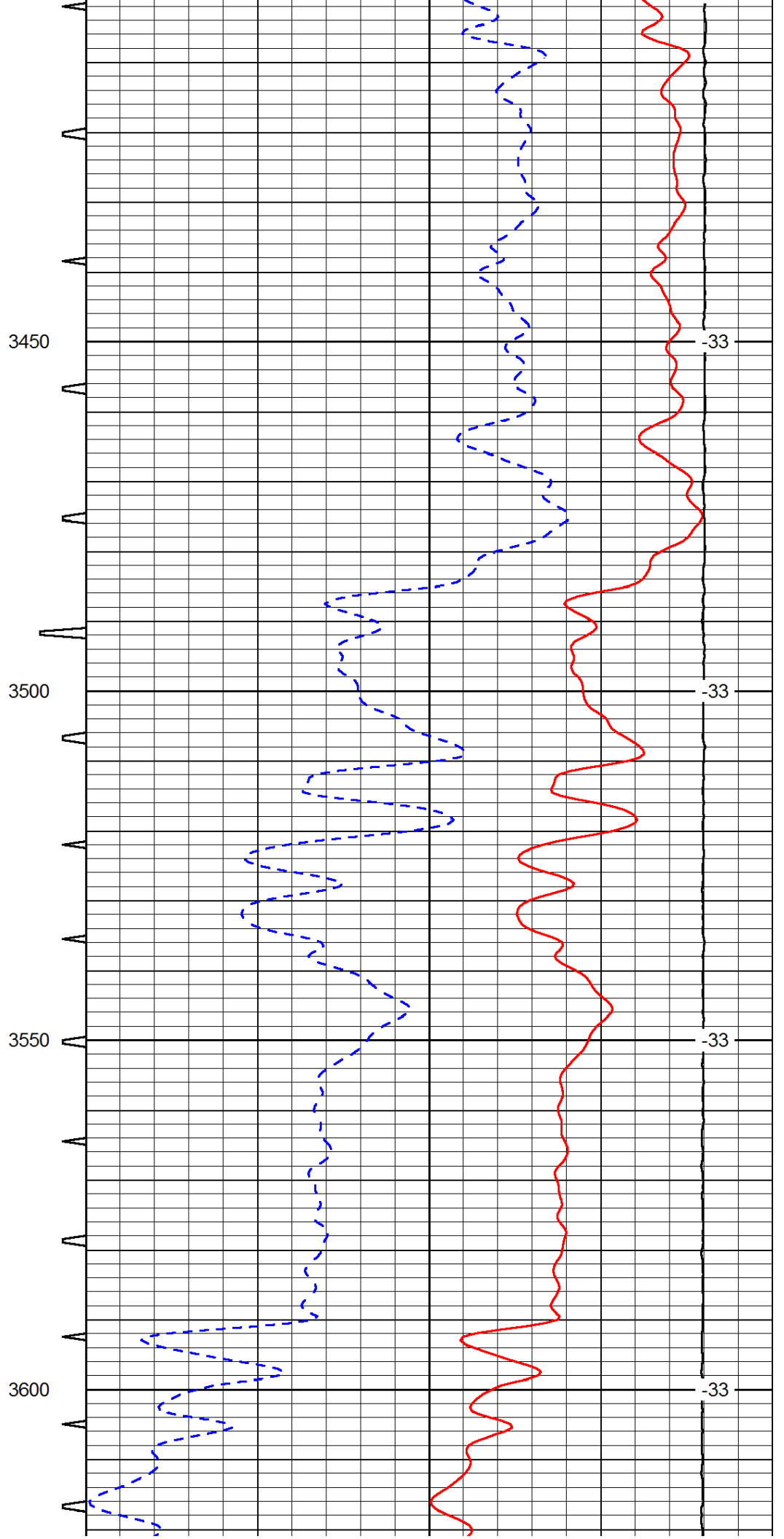
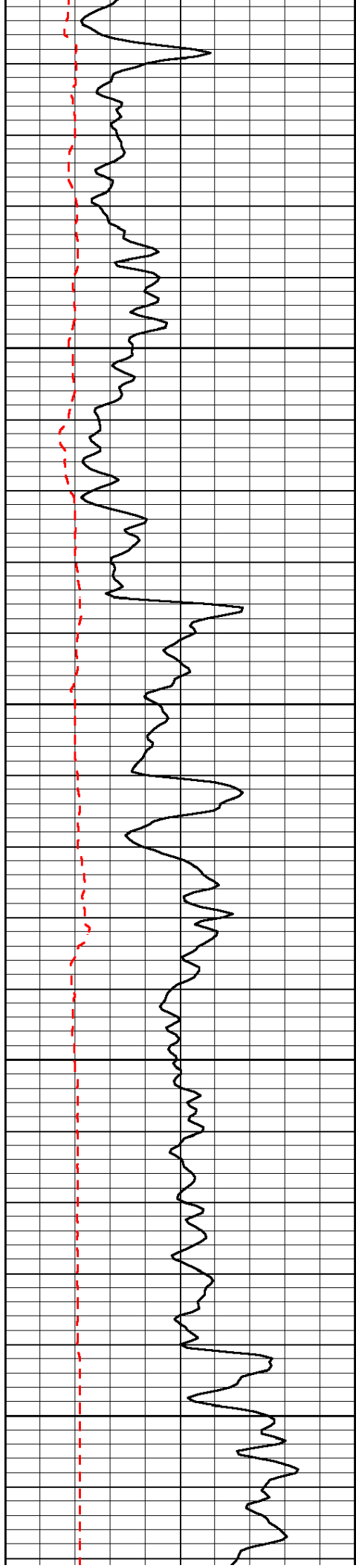


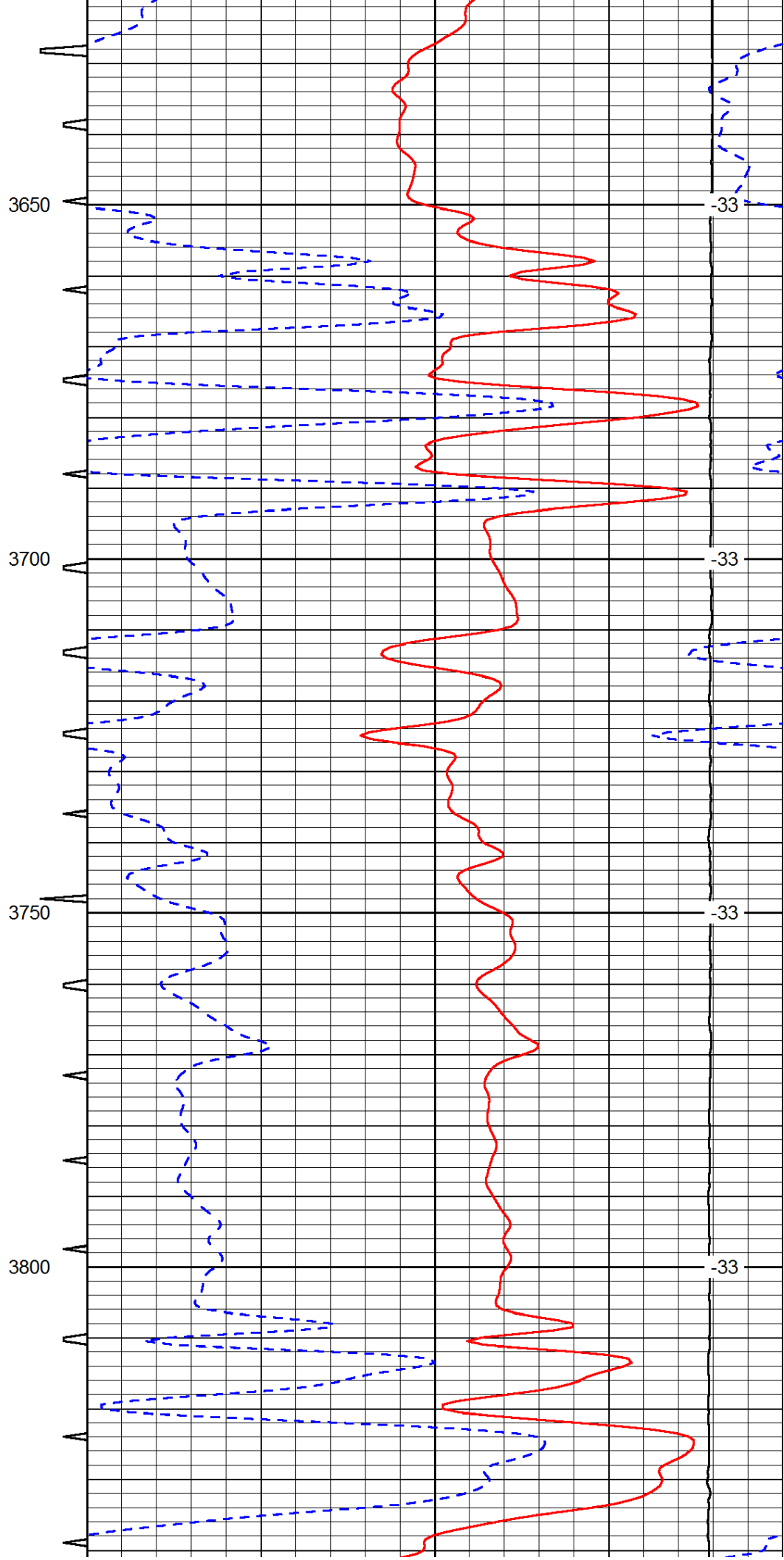
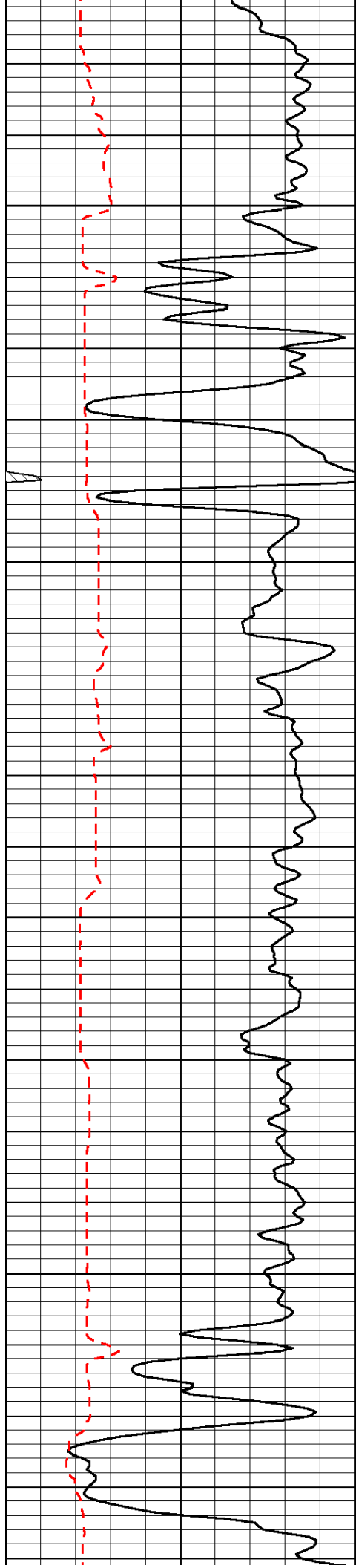


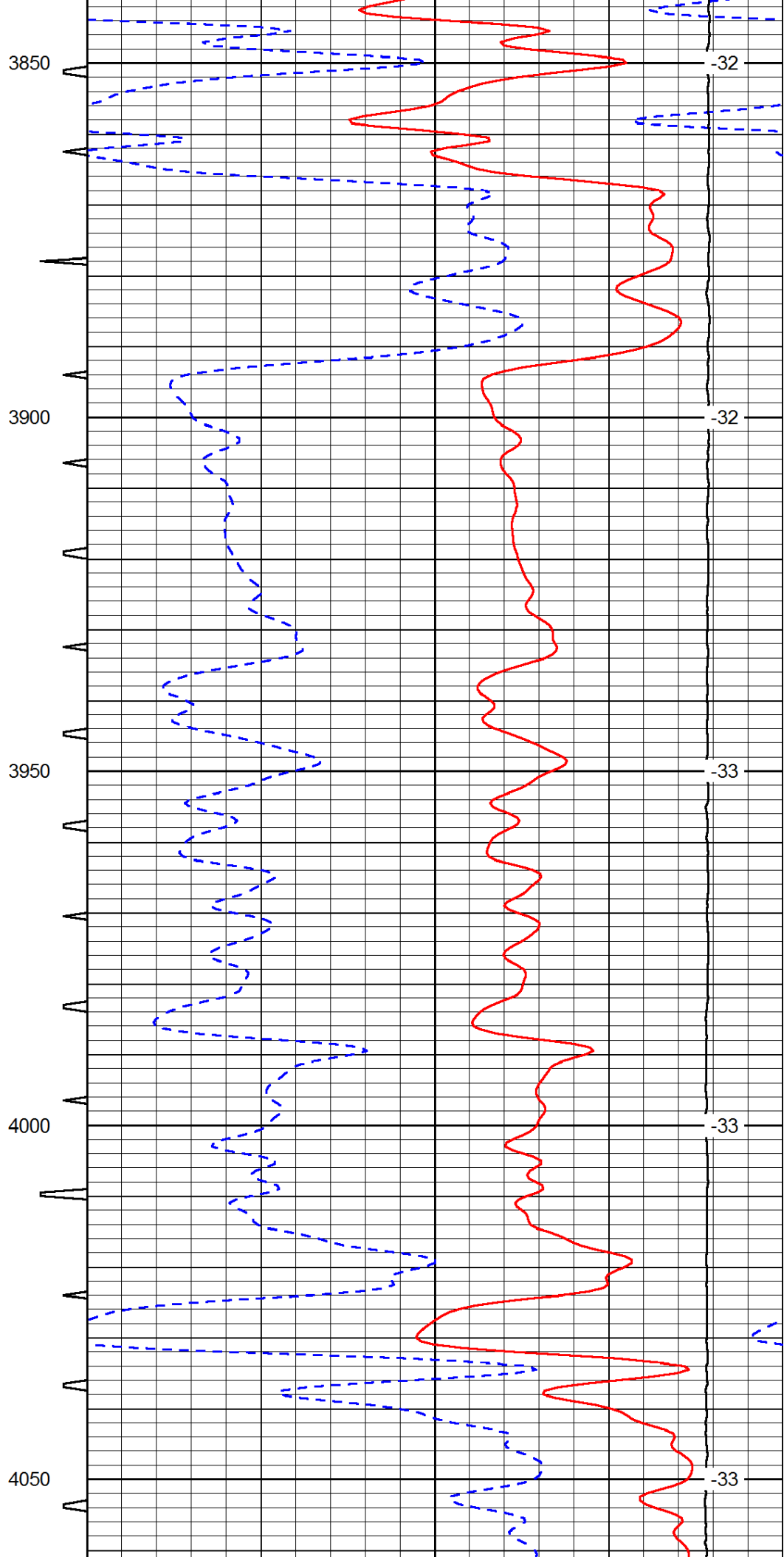
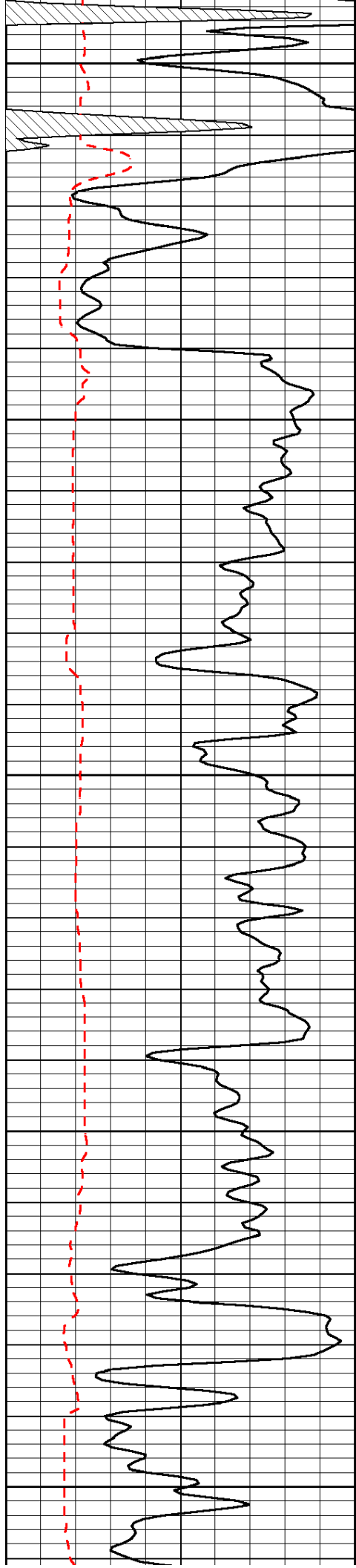


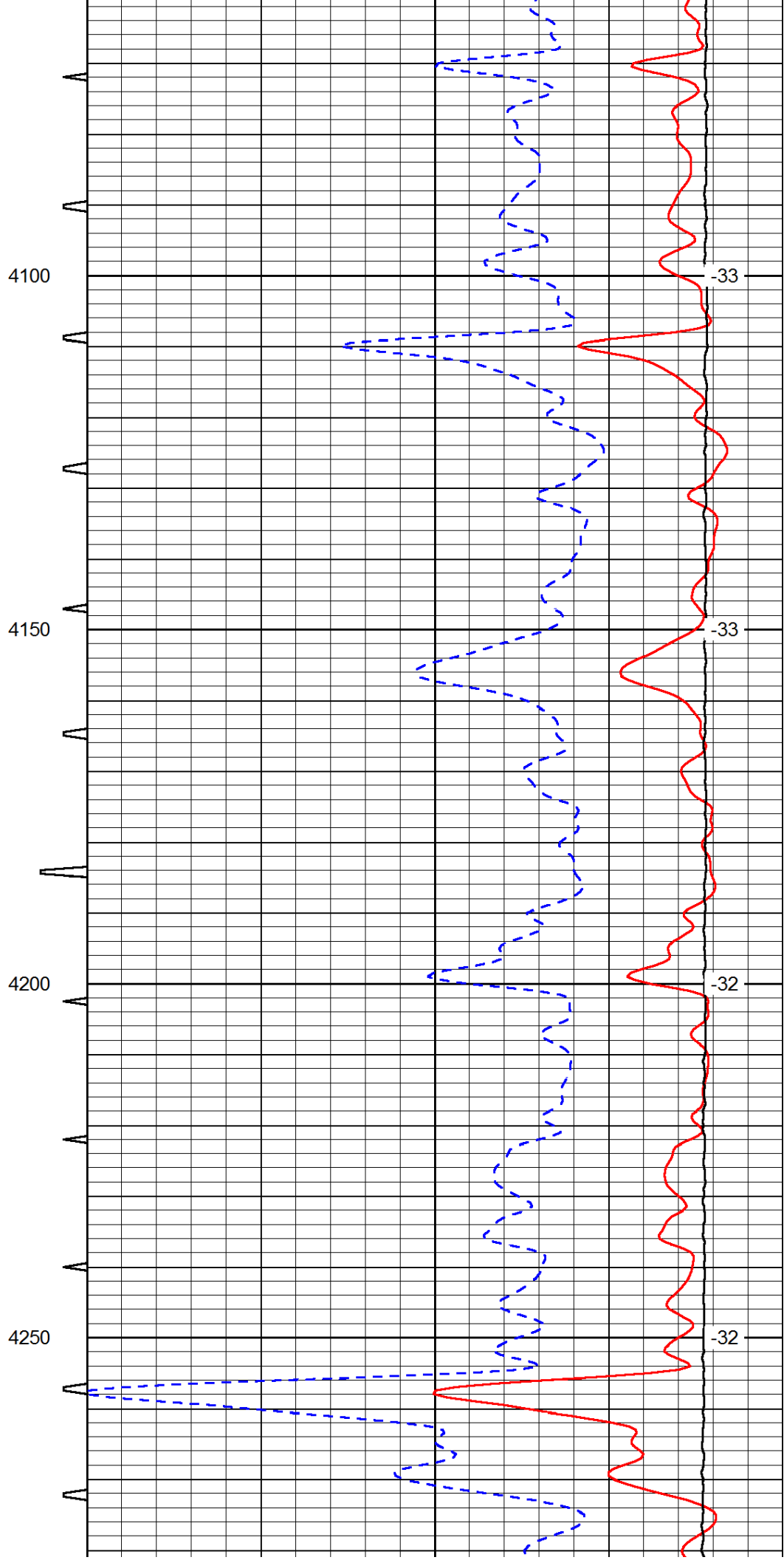
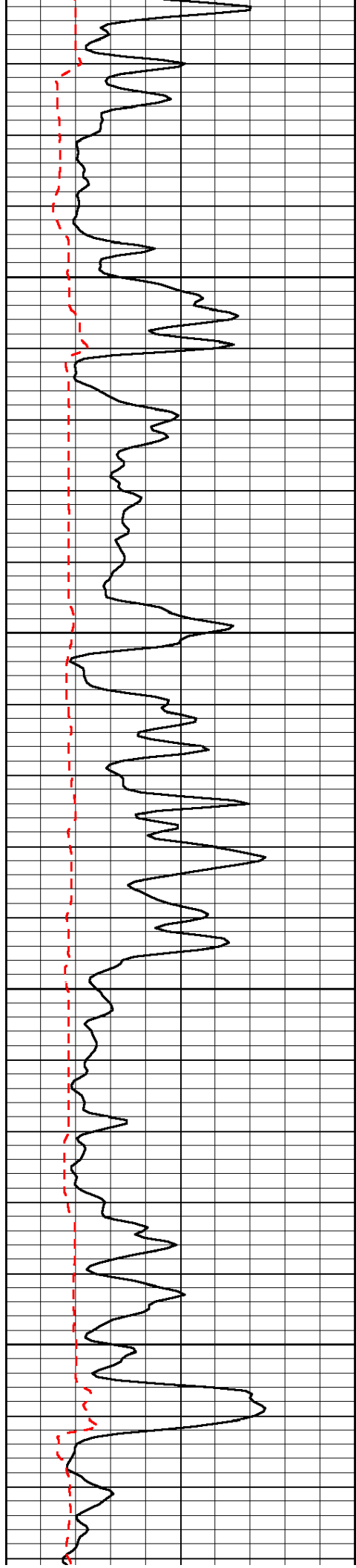


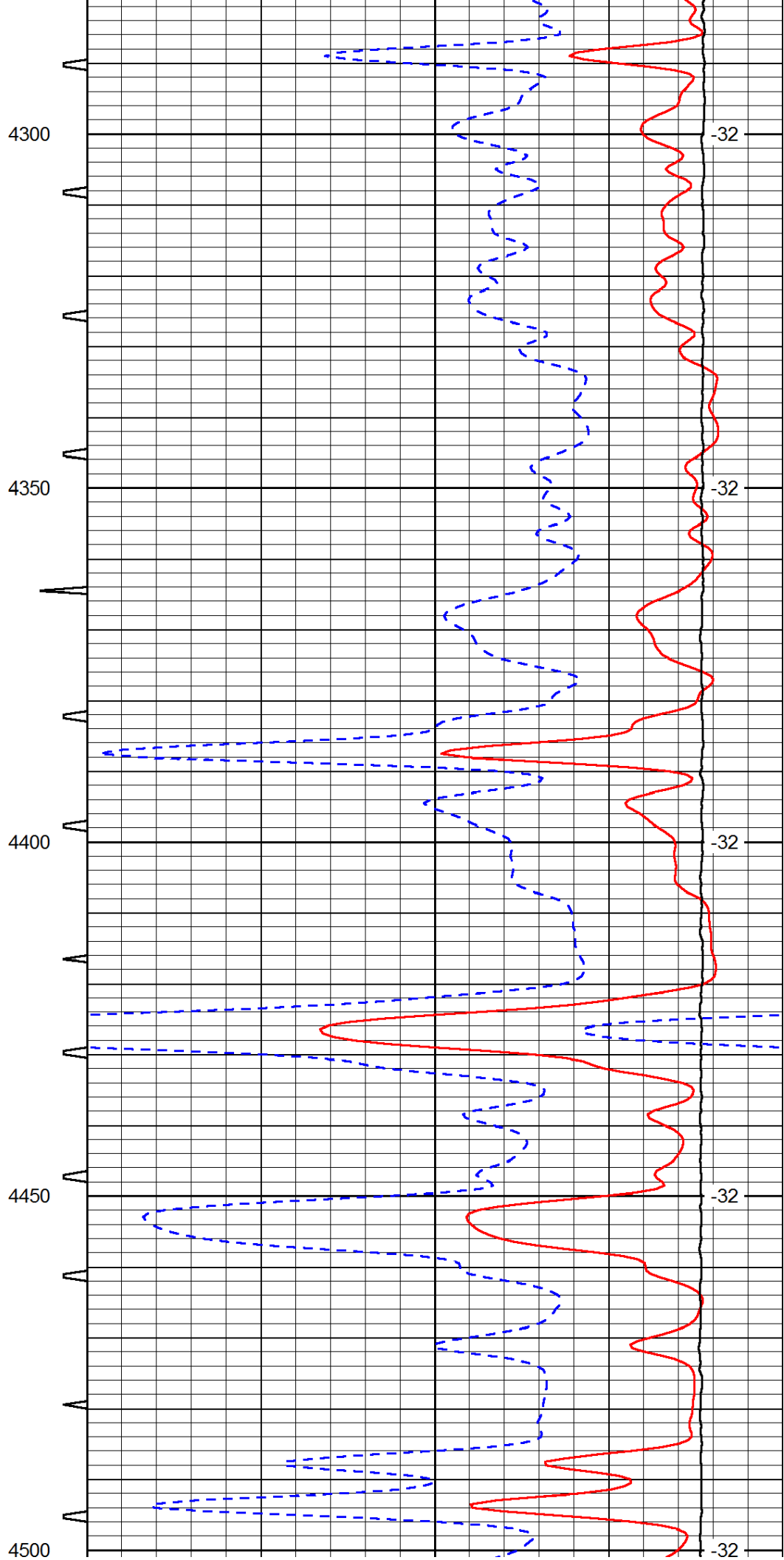
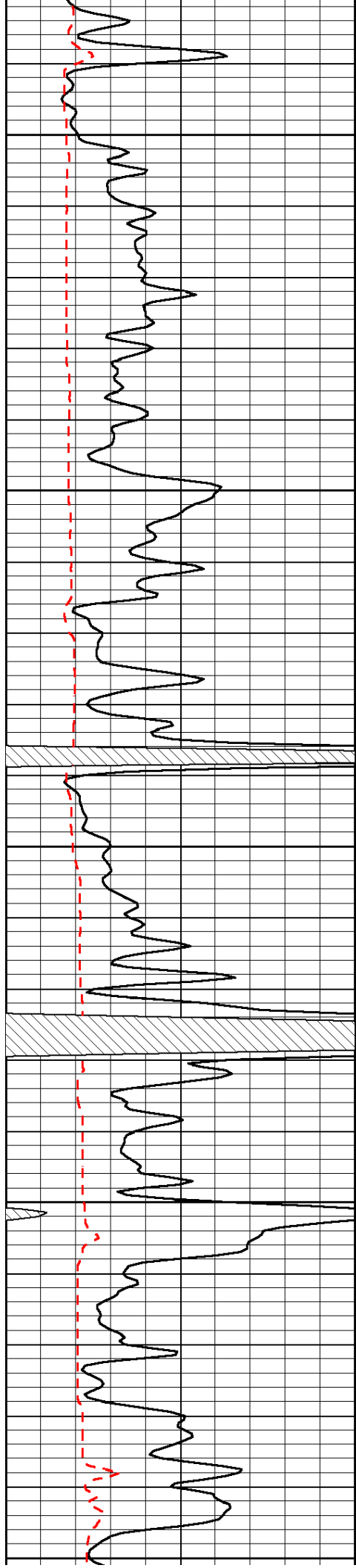


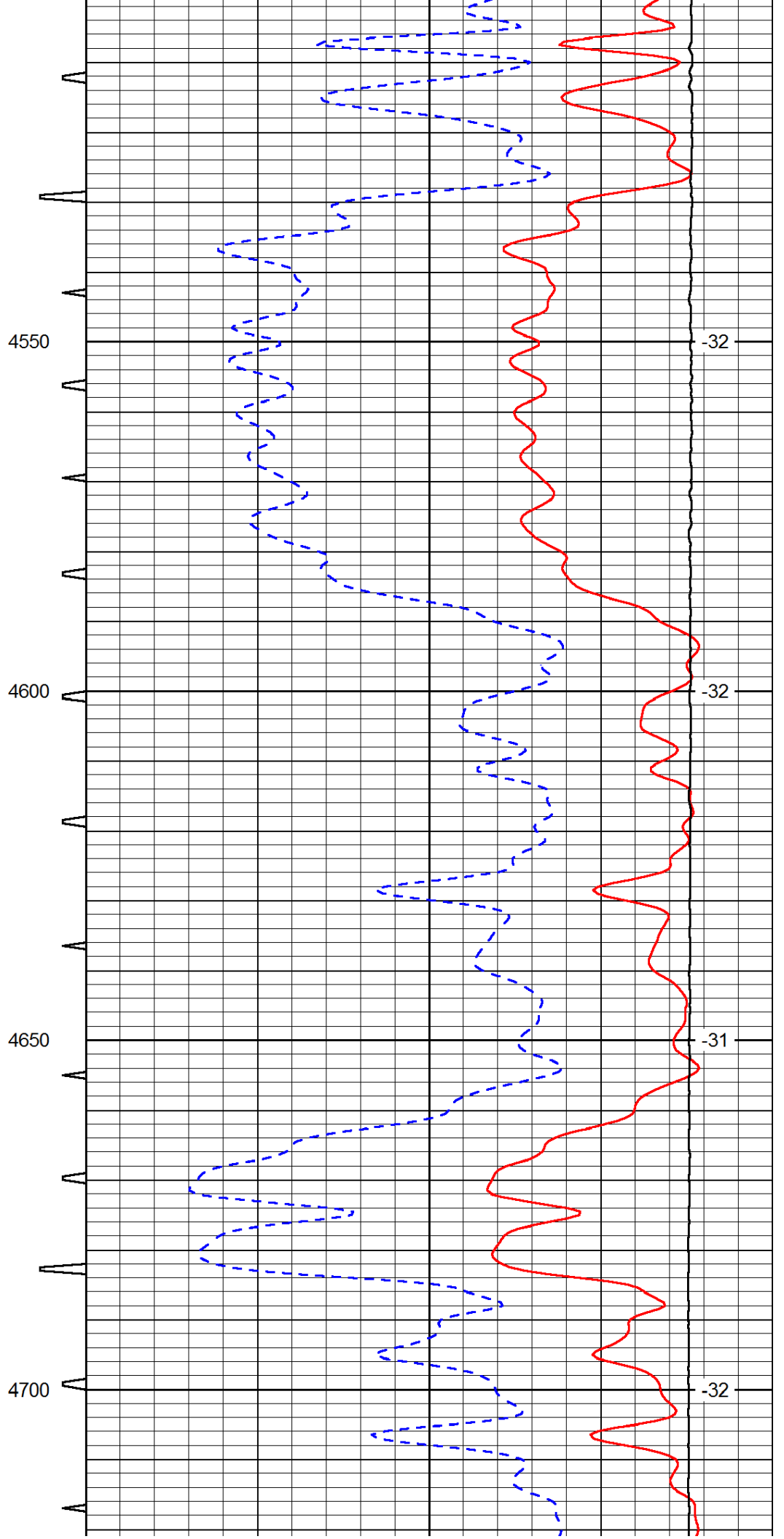
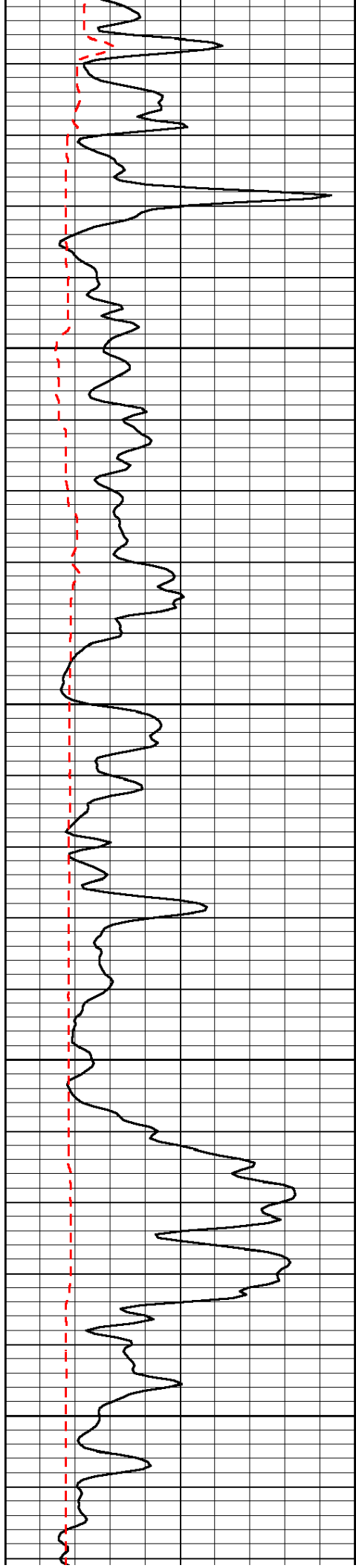


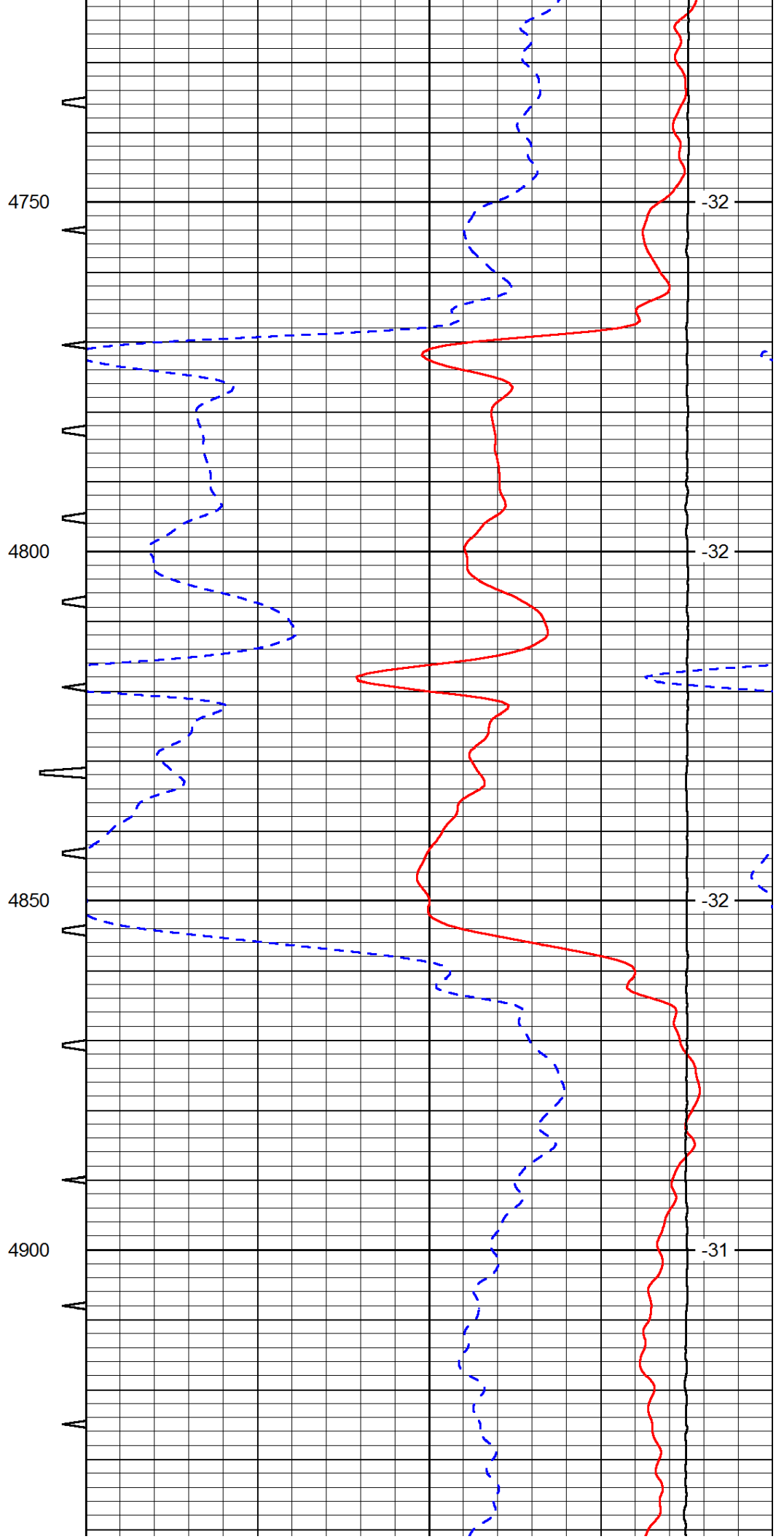
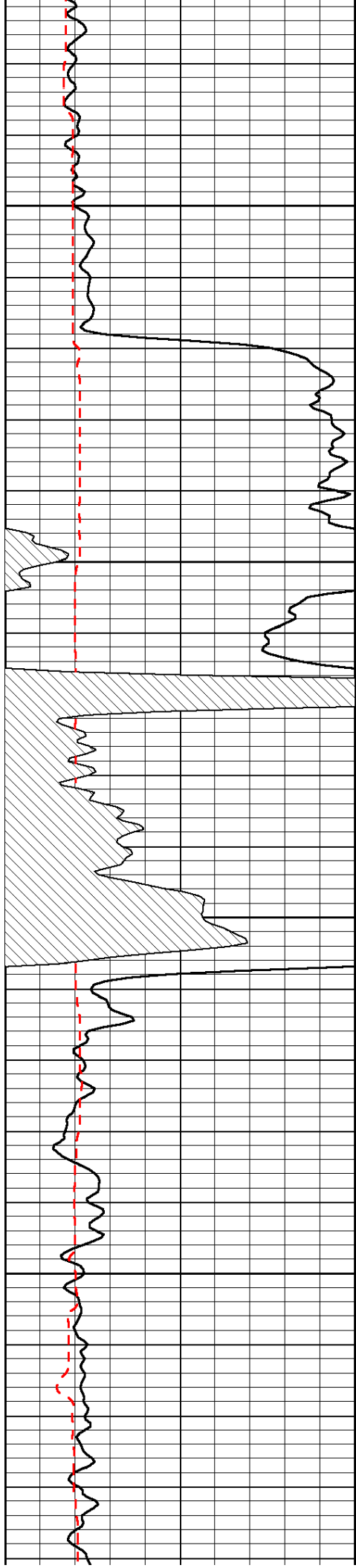


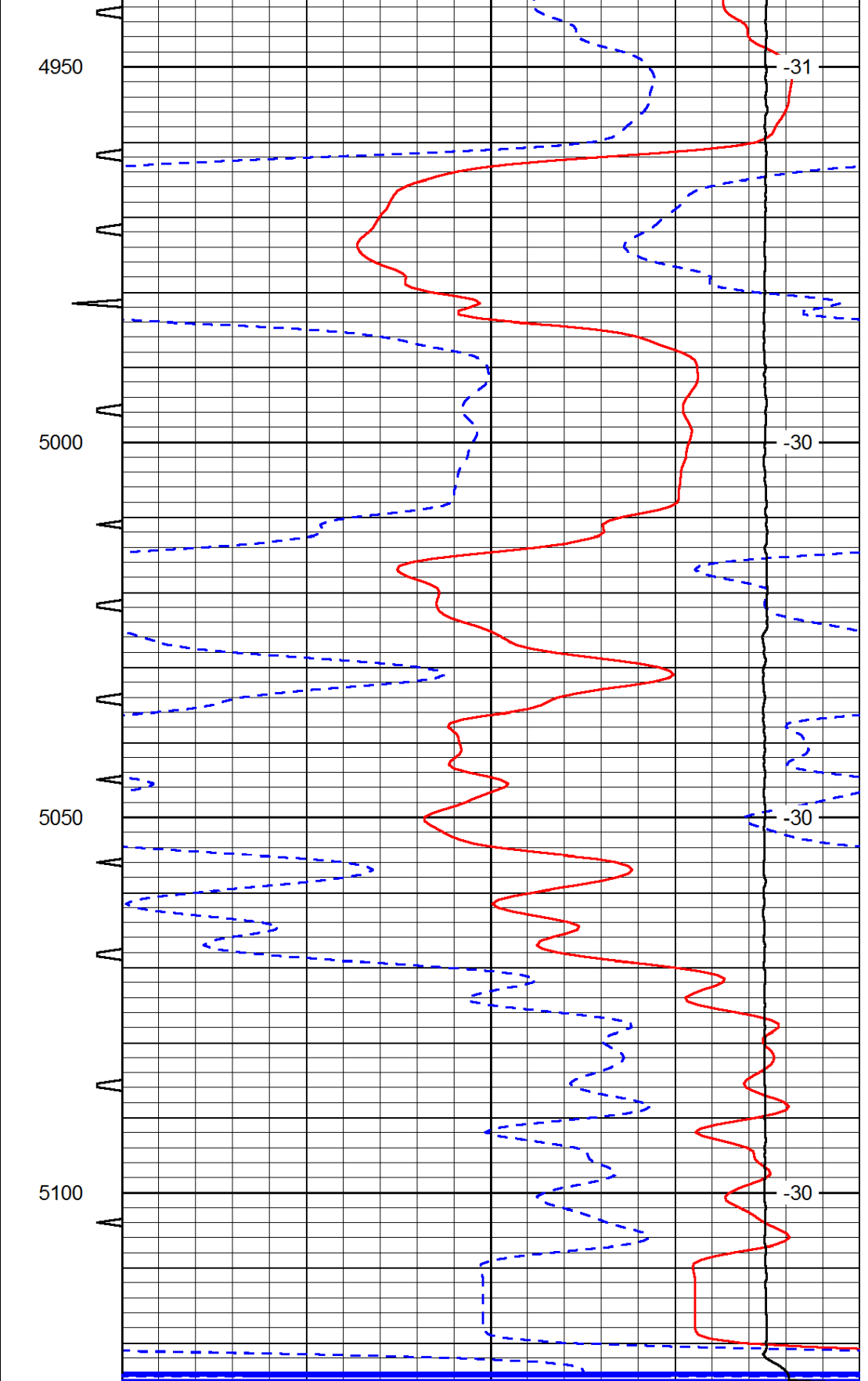
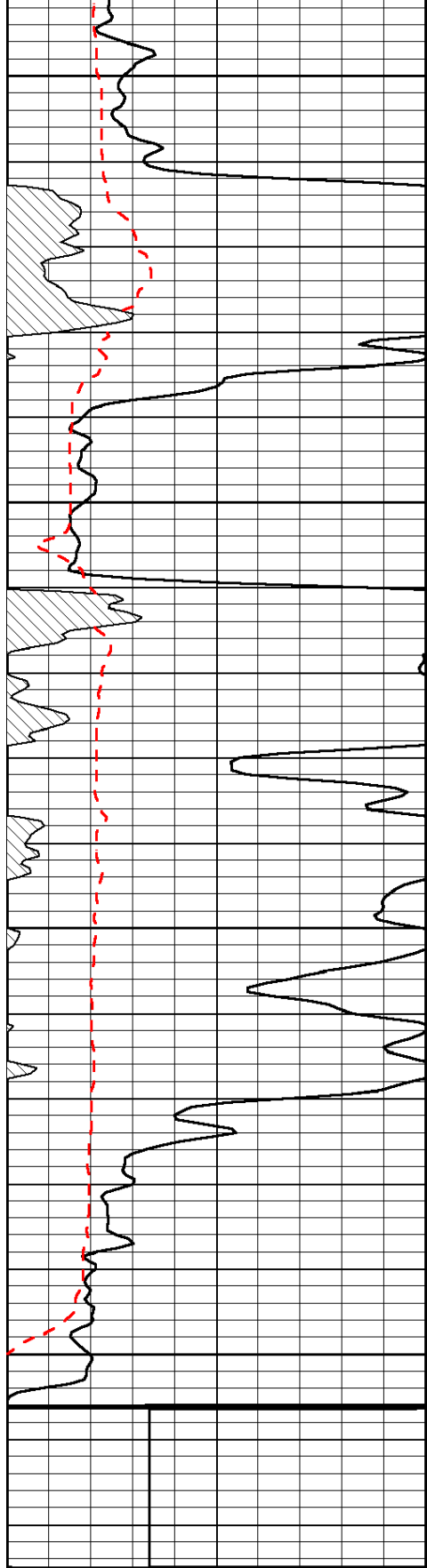












0	Gamma Ray	150	Sonic Int	140	Delta Time (usec/ft)	40
150	Gamma Ray	300	5	0	SPOR	-10
6	Caliper (GAPI)	16		15000	LTEN (lb)	0
LSPD						