



DUAL INDUCTION LL3/GR LOG

Company COLT ENERGY, INC.
Well CLINE # E-3
Field IOLA
County ALLEN
State KANSAS

Company COLT ENERGY, INC.
Well CLINE # E-3
Field IOLA
County ALLEN State KANSAS

Location: API #: 15-001-30843-0000
SE NW NE NE
399' FNL & 730' FEL
SEC 16 TWP 24S RGE 18E
Permanent Datum GL Elevation 963' est
Log Measured From GL
Drilling Measured From GL
Other Services CDL/SWN
Elevation K.B. ---
D.F. ---
G.L. 963' est

Date	6-09-2014
Run Number	ONE
Depth Driller	1020'
Depth Logger	953'
Bottom Logged Interval	951'
Top Log Interval	SURFACE
Casing Driller	8 5/8" @ 22'
Casing Logger	8 5/8" @ 22'
Bit Size	6 3/4"
Type Fluid in Hole	MUD
Density / Viscosity	
pH / Fluid Loss	
Source of Sample	
Rm @ Meas. Temp	
Rmf @ Meas. Temp	
Rmc @ Meas. Temp	
Source of Rmf / Rmc	
Rm @ BHT	
Time Circulation Stopped	
Time Logger on Bottom	
Maximum Recorded Temperature	
Equipment Number	OW1
Location	HOMINY, OK
Recorded By	LOWERY
Witnessed By	MR. ASHLOCK

<<< Fold Here >>>

All interpretations are opinions based on inferences from electrical or other measurements and we cannot and do not guarantee the accuracy or correctness of any interpretation, and we shall not, except in the case of gross or willful negligence on our part, be liable or responsible for any loss, costs, damages, or expenses incurred or sustained by anyone resulting from any interpretation made by any of our officers, agents or employees. These interpretations are also subject to our general terms and conditions set out in our current Price Schedule.

Comments

OW1-8658
CREW : SHAMBLES



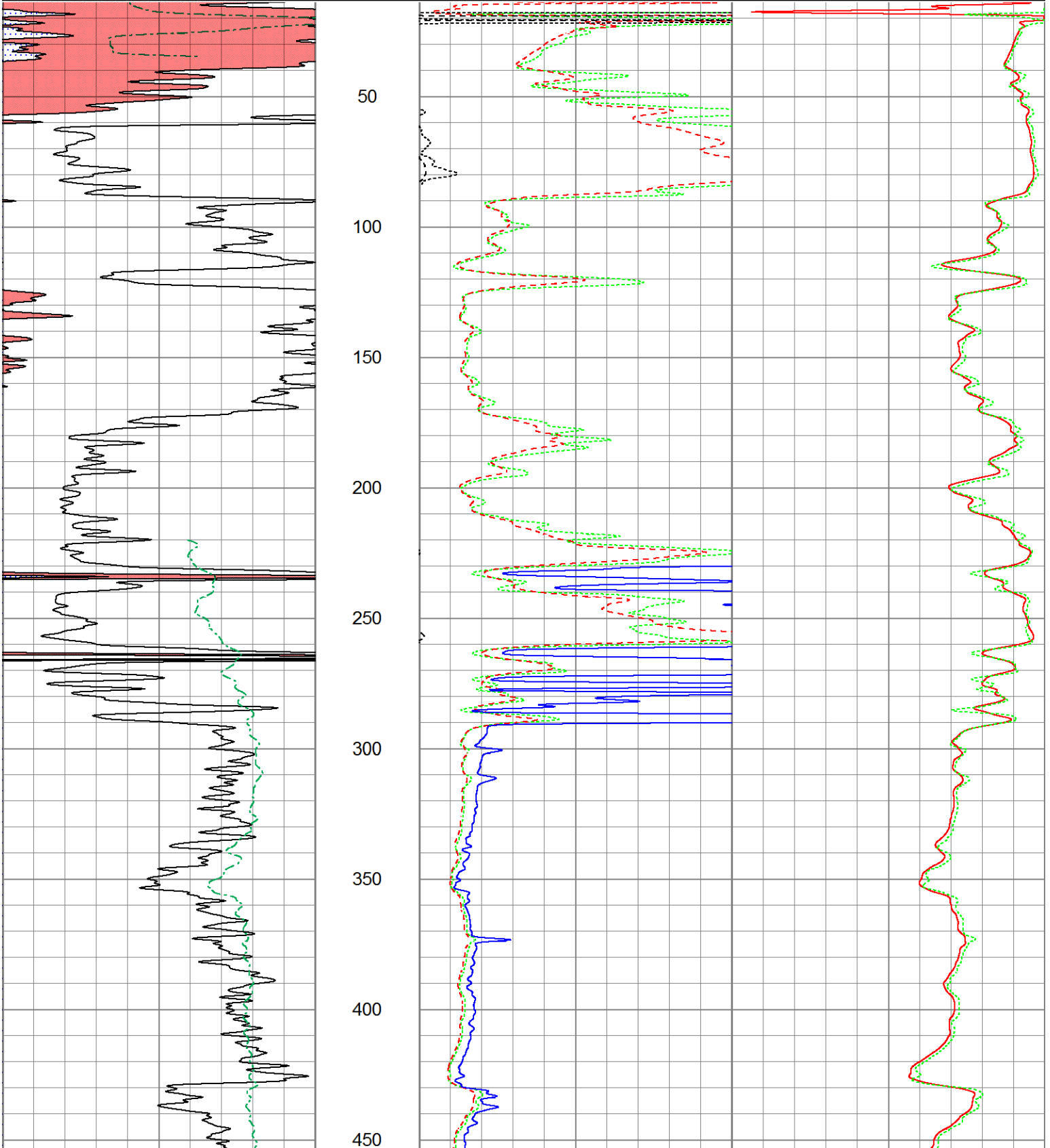
2" DIL SECTION

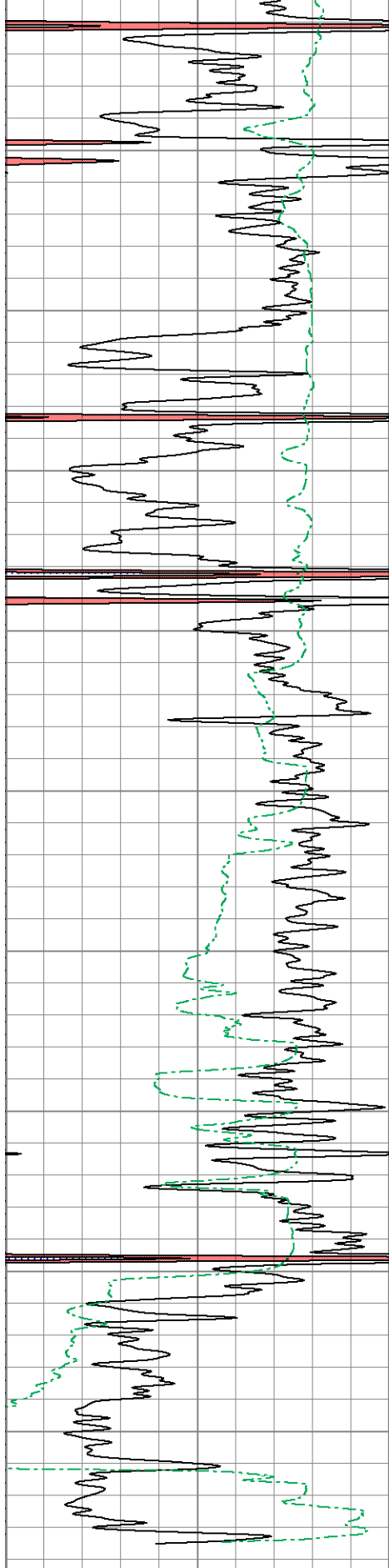
Database File ow1-8658 colt energy.db
 Dataset Pathname DIL/pass1.5
 Presentation Format dil2mdcol
 Dataset Creation Mon Jun 09 13:48:50 2014
 Charted by Depth in Feet scaled 1:600

0	GR (GAPI)	150
0	SP (mV)	200

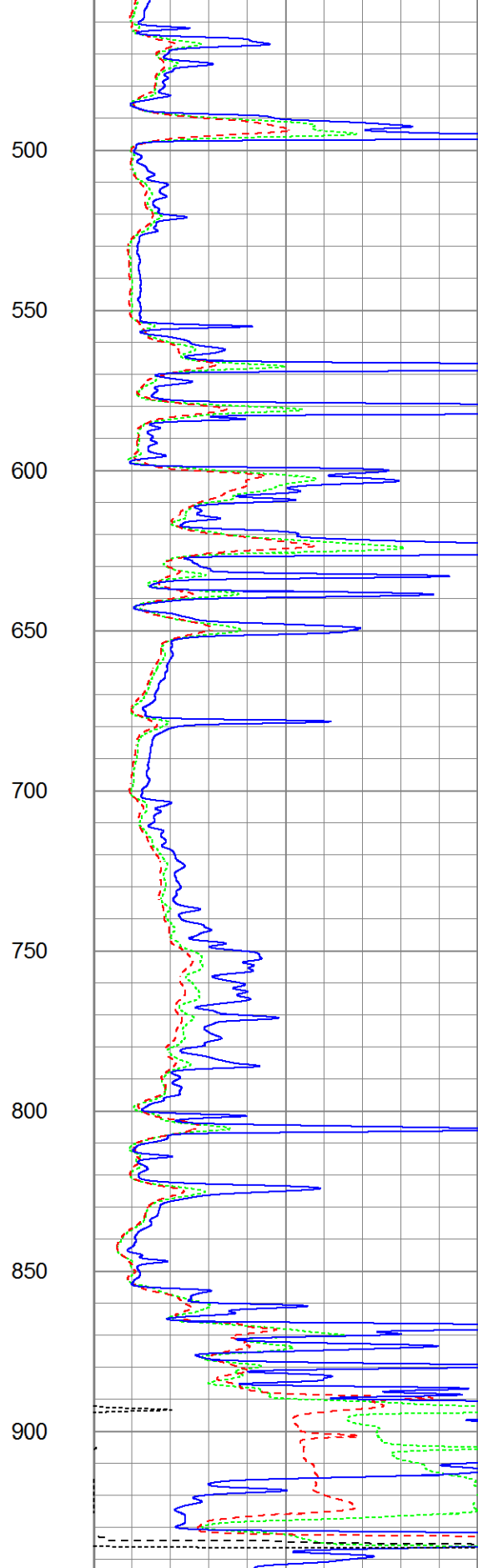
0	RLL3 (Ohm-m)	50
0	RILM (Ohm-m)	50
0	RILD (Ohm-m)	50

1000	CILD (mmho/m)	0
1000	CILM (mmho/m)	0





0	GR (GAPI)	150
0	SP (mV)	200



0	RLL3 (Ohm-m)	50
0	RILM (Ohm-m)	50
0	RILD (Ohm-m)	50



1000	CILD (mmho/m)	0
1000	CILM (mmho/m)	0

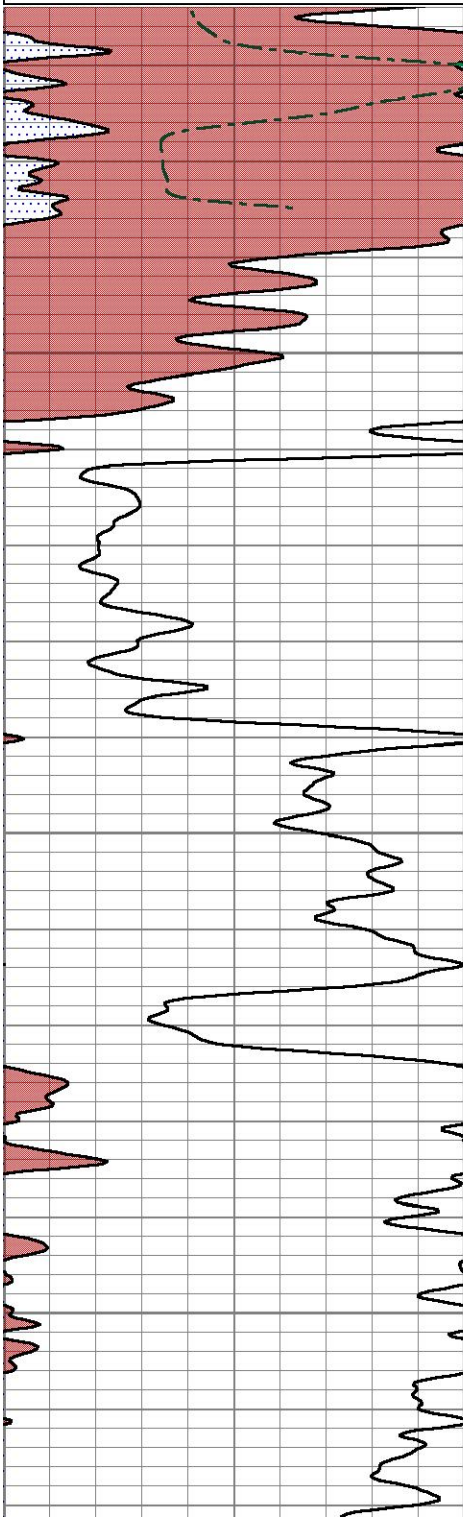


5" DIL SECTION

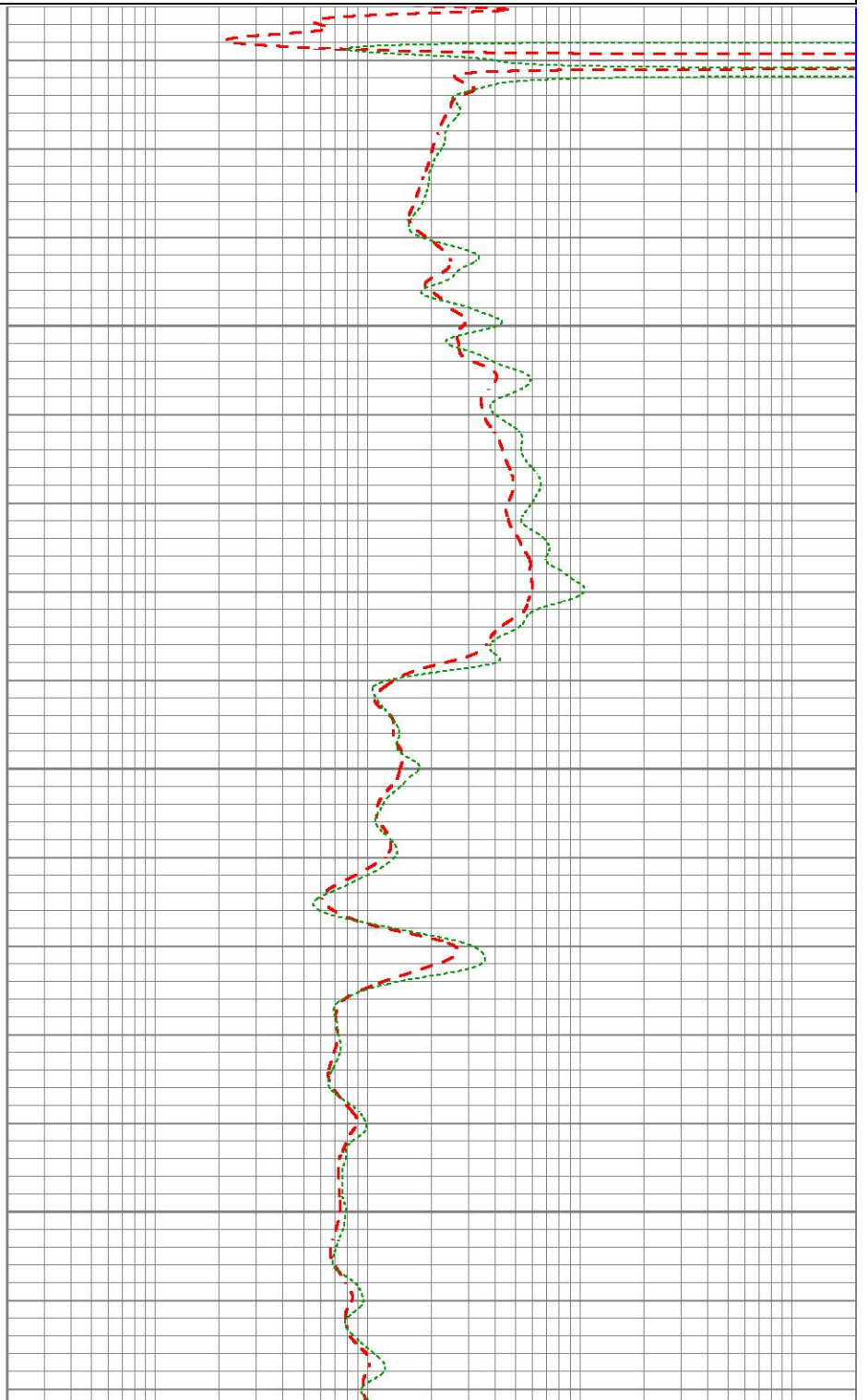
Database File ow1-8658 colt energy.db
 Dataset Pathname DIL/pass1.3
 Presentation Format dil5mdcol
 Dataset Creation Mon Jun 09 13:47:35 2014
 Charted by Depth in Feet scaled 1:240

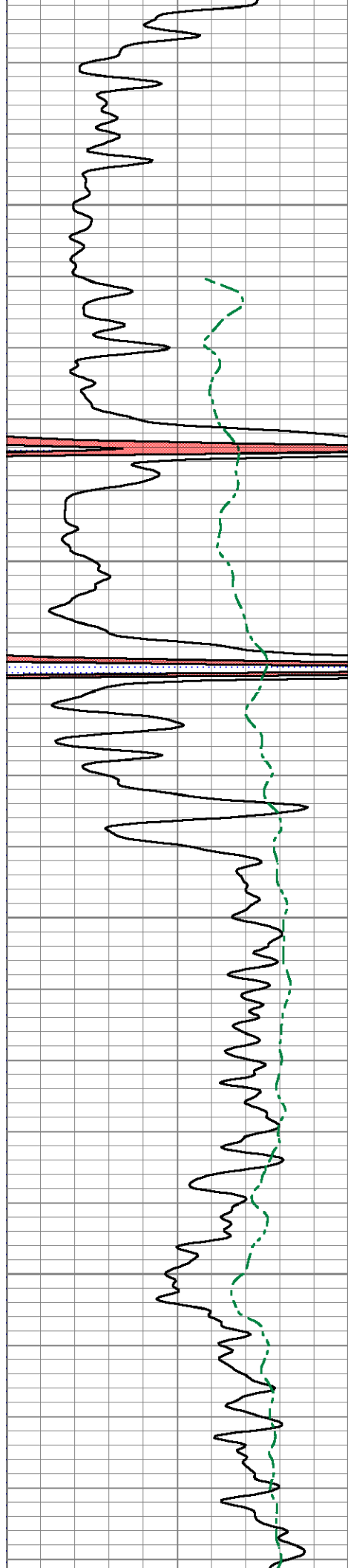
0	Gamma Ray (GAPI)	150
0	SP (mV)	200

0.2	Deep Resistivity (Ohm-m)	2000
0.2	Medium Resistivity (Ohm-m)	2000
0.2	Shallow Resistivity (Ohm-m)	2000



50
100
150



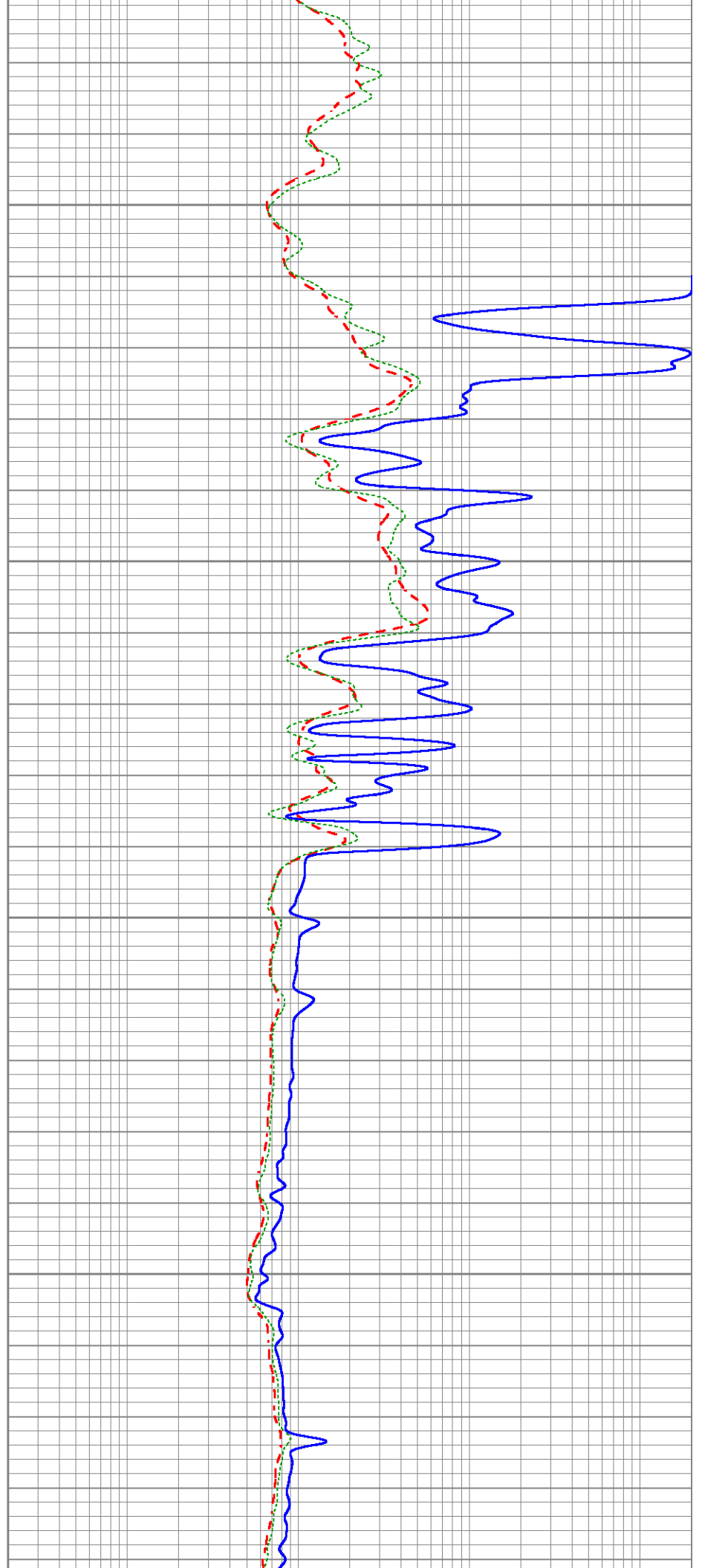


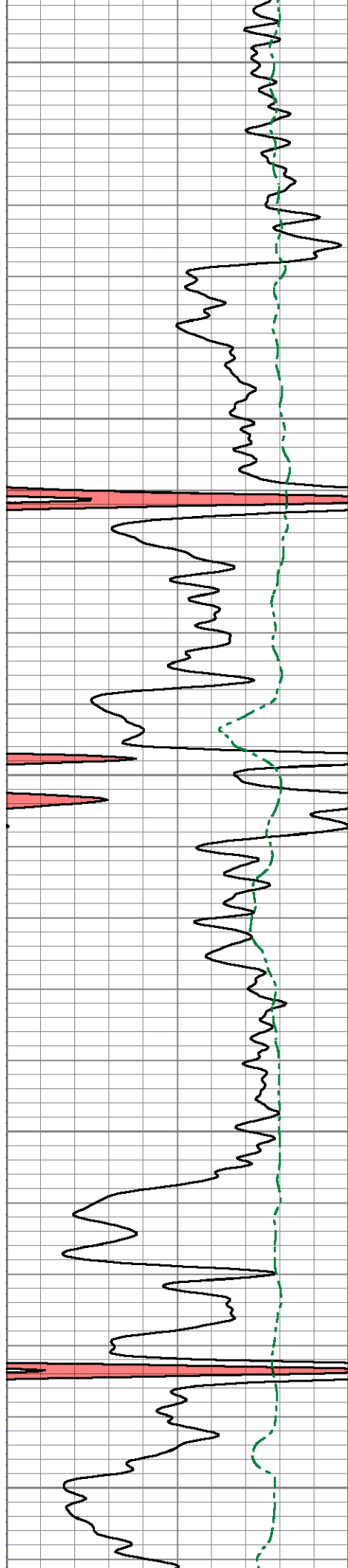
200

250

300

350





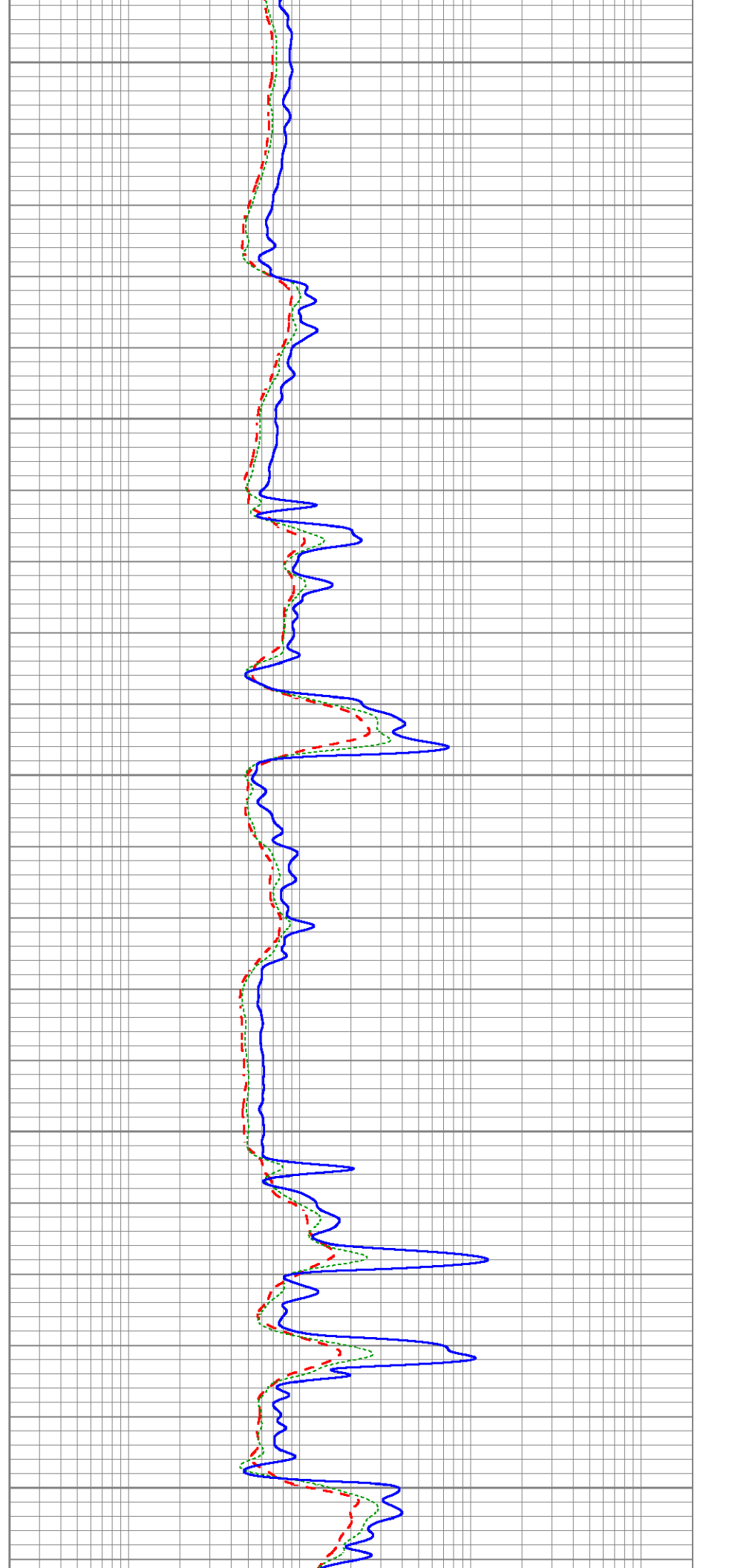
400

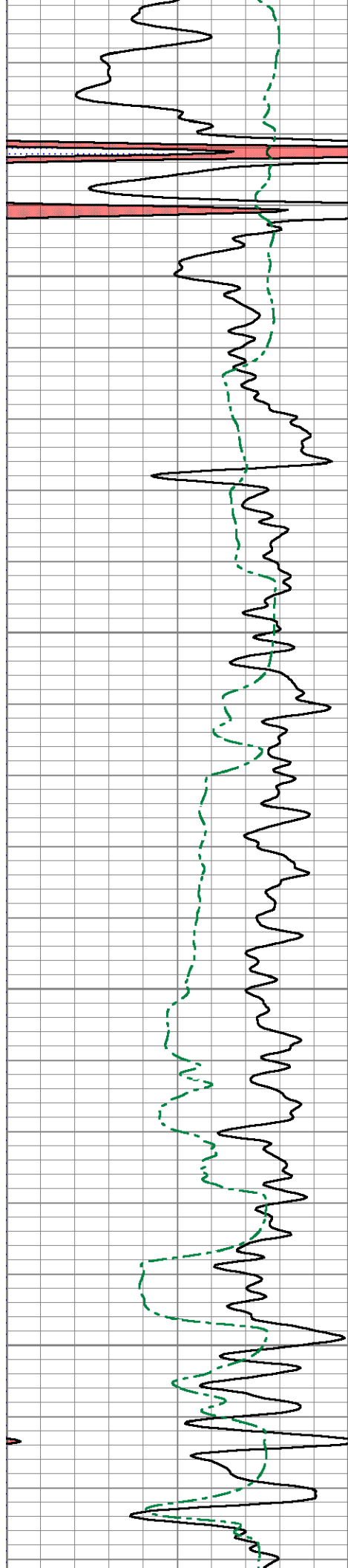
450

500

550

600



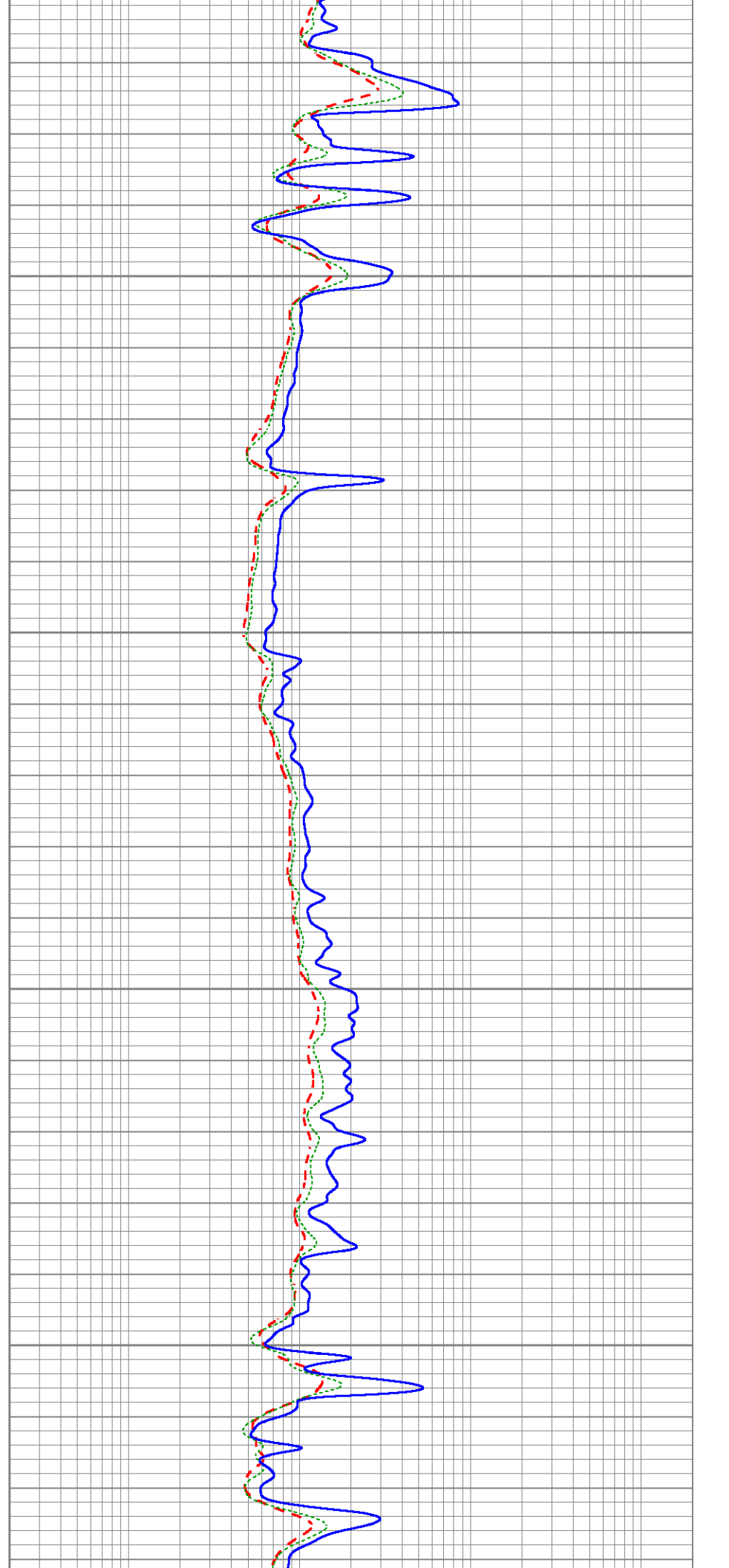


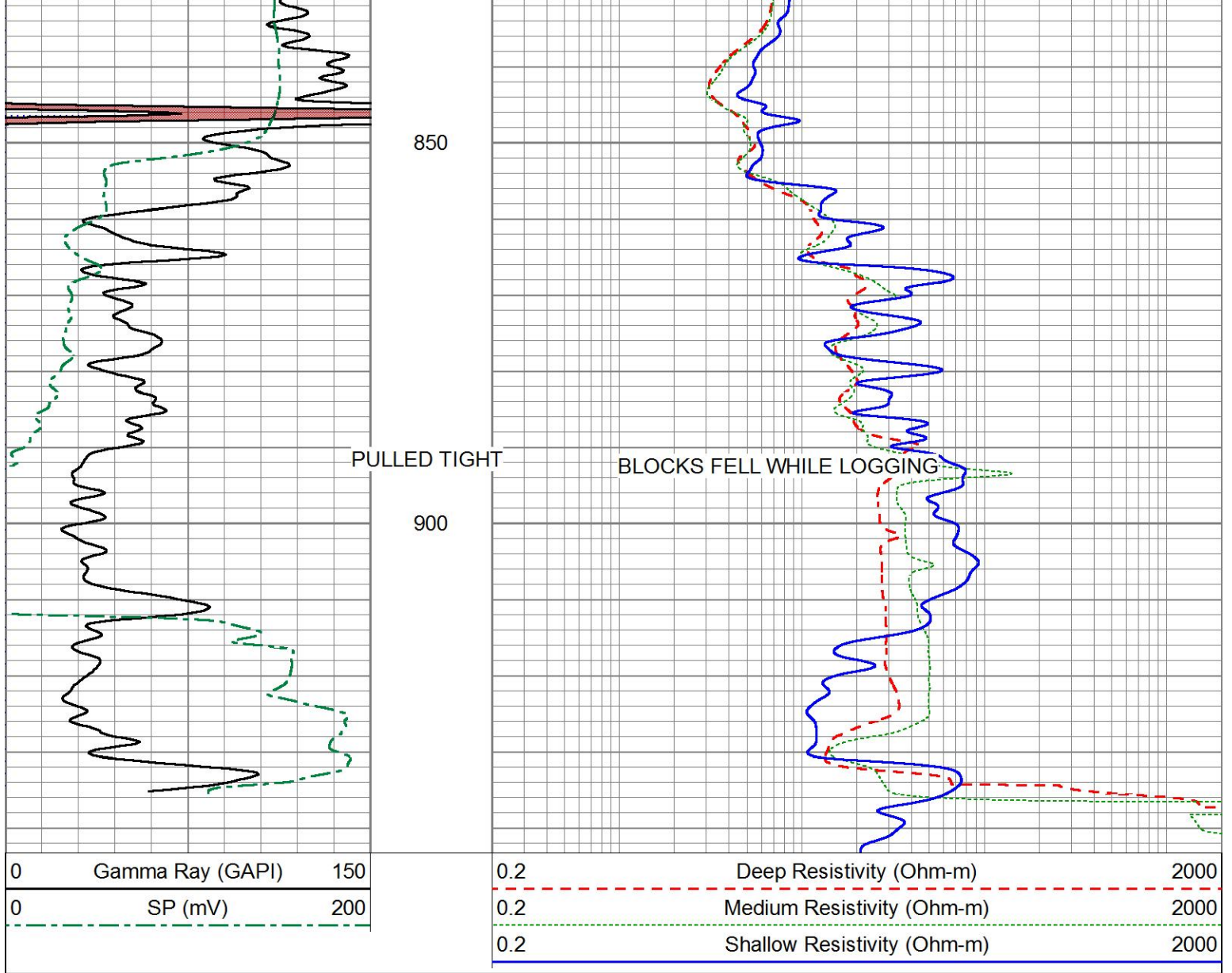
650

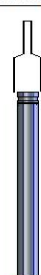

700

750

800





Sensor	Offset (ft)	Schematic	Description	Length (ft)	O.D. (in)	Weight (lb)
			Cable-CableHead Isulation Sub	1.42	3.00	20.00
SP CILD	10.92 10.92		DIL-GEAR (159) Dual Induction Electrical Log	21.36	4.00	345.00

CILM	7.00				
RLL3	1.67				

Dataset: ow1-8658 colt energy.db: field/well/DIL/pass1 Total length: 22.78 ft Total weight: 365.00 lb O.D.: 4.00 in
--