



DUAL INDUCTION LL3/GR LOG

Company COLT ENERGY, INC.
Well BAKER # BD-2
Field
County ALLEN
State KANSAS

Company COLT ENERGY, INC.
Well BAKER # BD-2
Field
County ALLEN State KANSAS

Location: API #: 15-001-30826-0000
SE NW SE SW
837' FSL & 1883' FWL
SEC 4 TWP 24S RGE 18E
Permanent Datum GL Elevation 1022'
Log Measured From GL
Drilling Measured From GL
Other Services CDL/SWN
Elevation
K.B. ---
D.F. ---
G.L. 1022'

Date	5-08-2014
Run Number	ONE
Depth Driller	1092'
Depth Logger	1085'
Bottom Logged Interval	1083'
Top Log Interval	SURFACE
Casing Driller	8 5/8" @ 22.30'
Casing Logger	8 5/8" @ 22.30'
Bit Size	6 3/4"
Type Fluid in Hole	MUD
Density / Viscosity	
pH / Fluid Loss	
Source of Sample	
Rm @ Meas. Temp	
Rmf @ Meas. Temp	
Rmc @ Meas. Temp	
Source of Rmf / Rmc	
Rm @ BHT	
Time Circulation Stopped	
Time Logger on Bottom	
Maximum Recorded Temperature	
Equipment Number	OW1
Location	HOMINY, OK
Recorded By	LOWERY
Witnessed By	MR. ASHLOCK

<<< Fold Here >>>

All interpretations are opinions based on inferences from electrical or other measurements and we cannot and do not guarantee the accuracy or correctness of any interpretation, and we shall not, except in the case of gross or willful negligence on our part, be liable or responsible for any loss, costs, damages, or expenses incurred or sustained by anyone resulting from any interpretation made by any of our officers, agents or employees. These interpretations are also subject to our general terms and conditions set out in our current Price Schedule.

Comments

OW1-8638
CREW : SHAMBLES



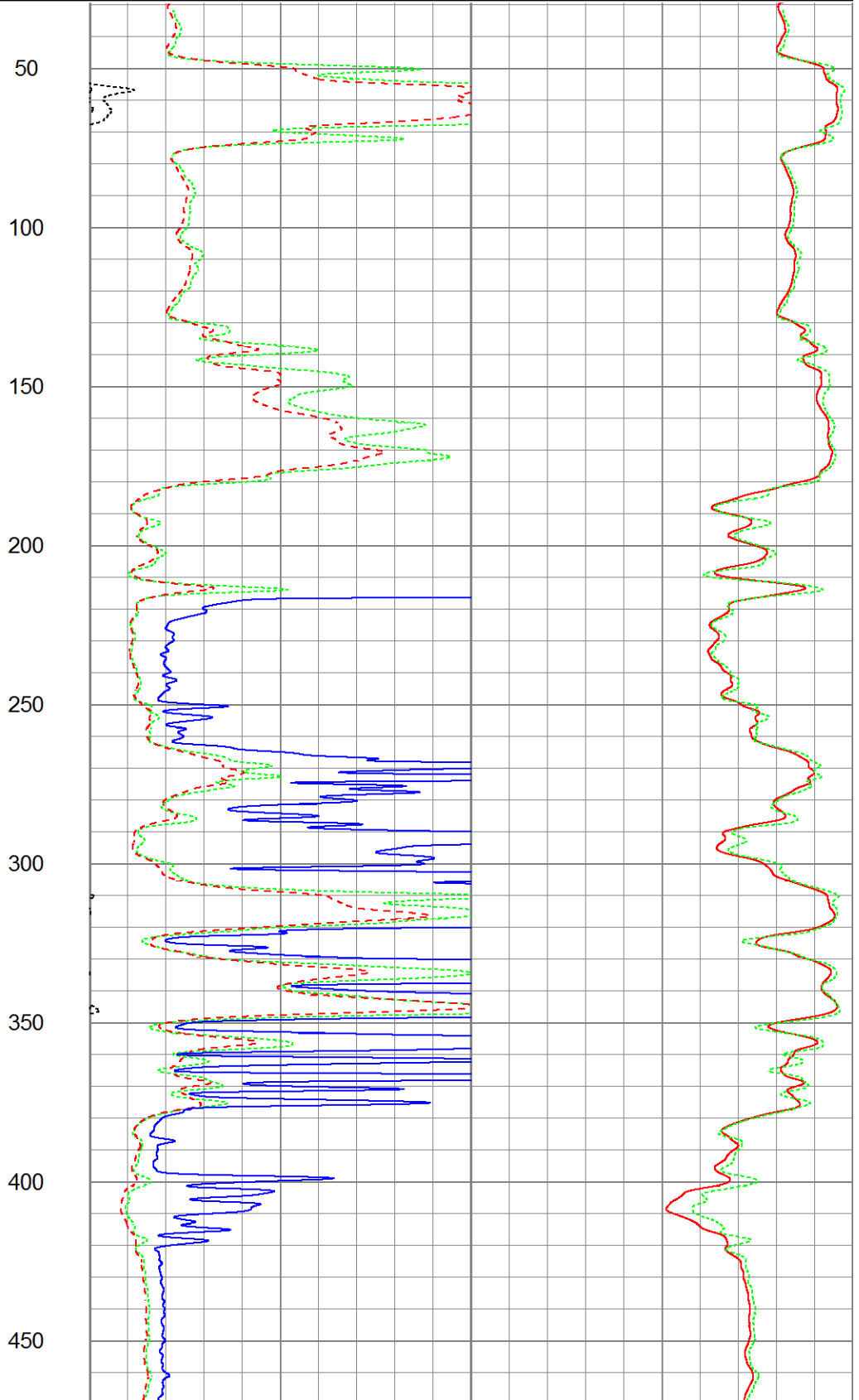
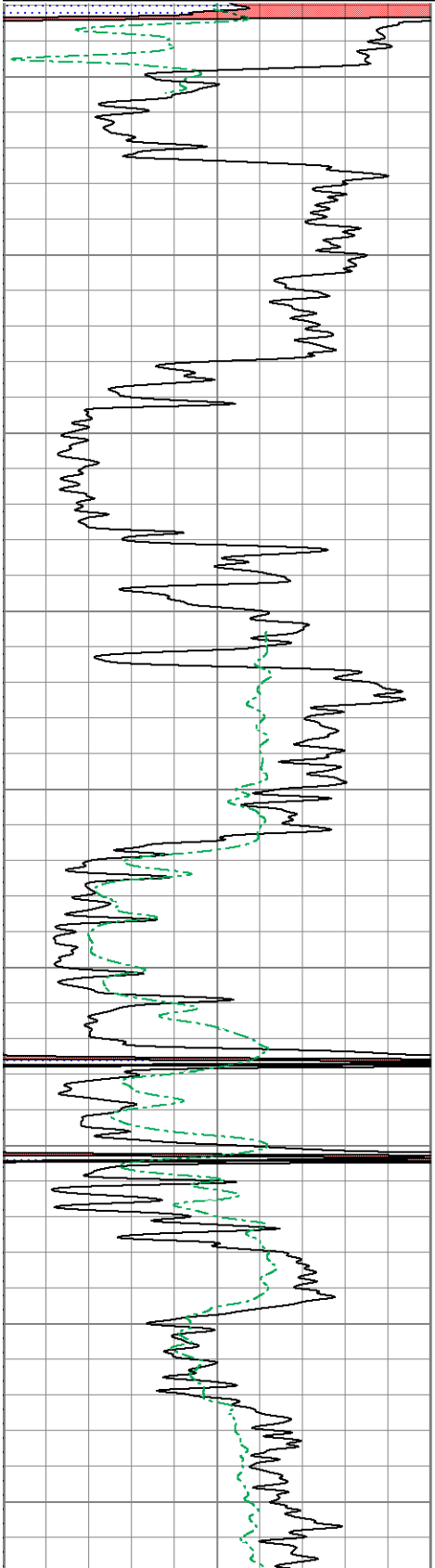
2" DIL SECTION

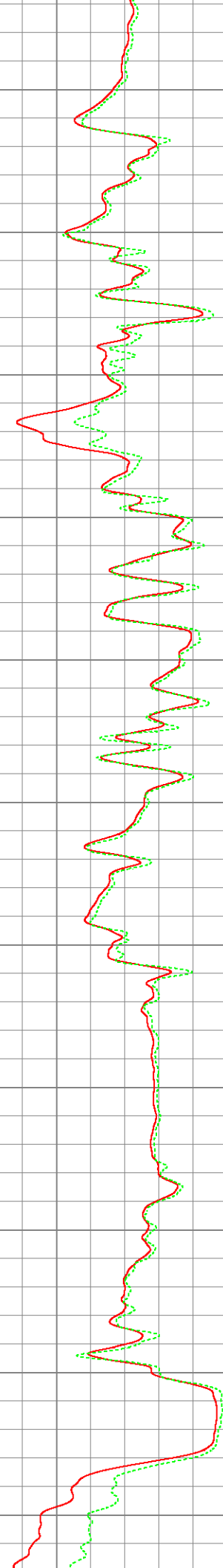
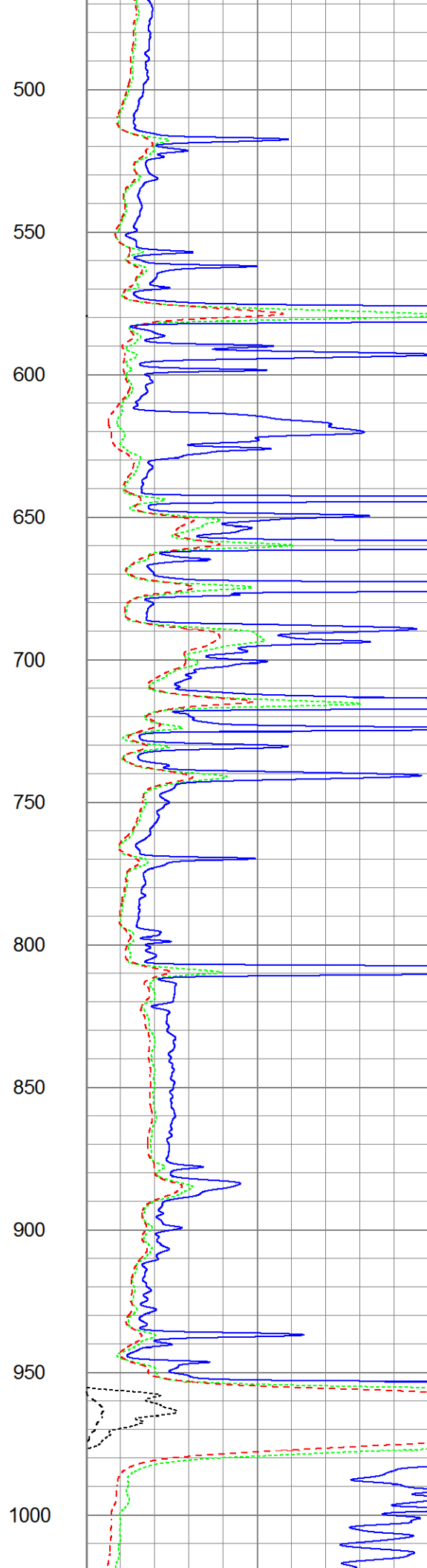
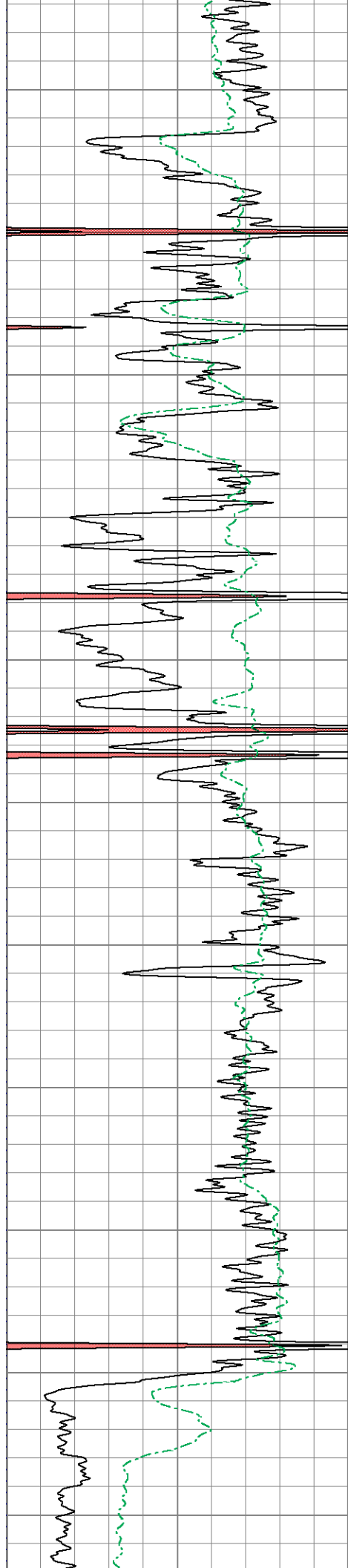
Database File ow1-8638 colt energy.db
 Dataset Pathname DIL/pass1.2
 Presentation Format dil2mdcol
 Dataset Creation Thu May 08 09:40:45 2014
 Charted by Depth in Feet scaled 1:600

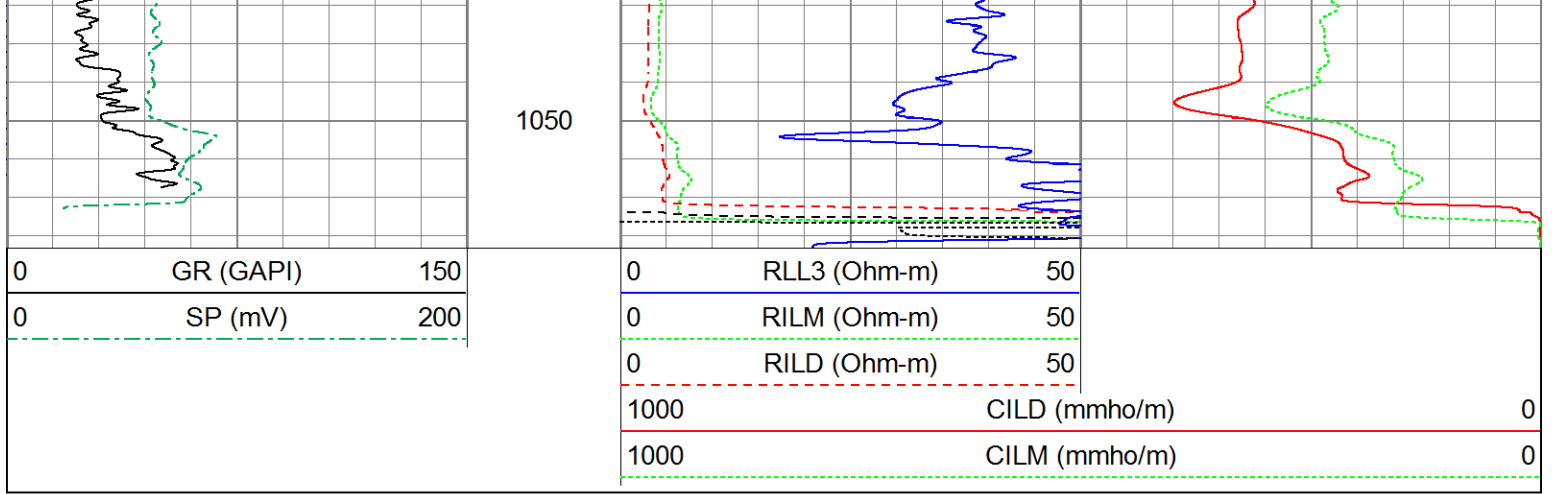
0	GR (GAPI)	150
0	SP (mV)	200

0	RLL3 (Ohm-m)	50
0	RILM (Ohm-m)	50
0	RILD (Ohm-m)	50

1000	CILD (mmho/m)	0
1000	CILM (mmho/m)	0

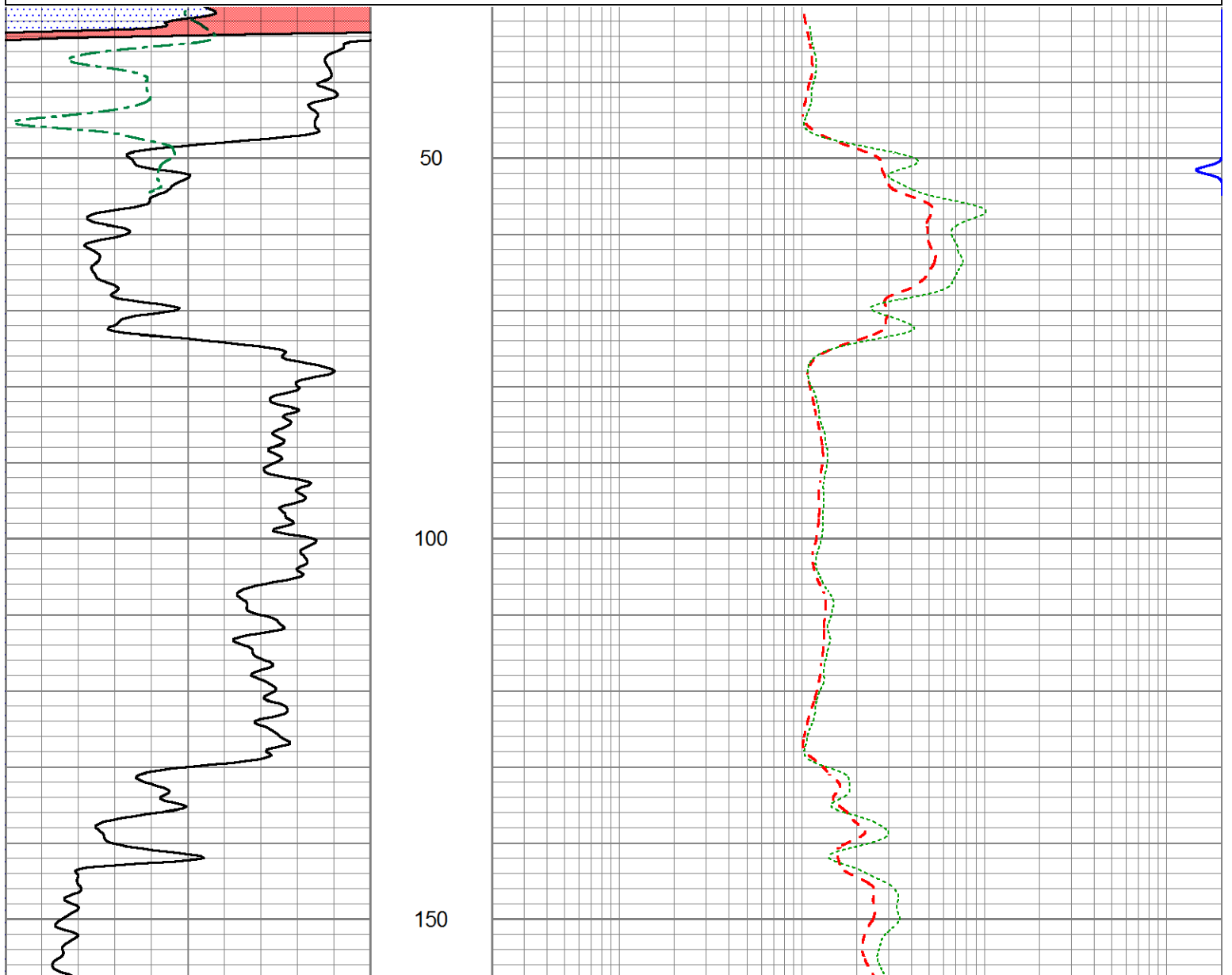


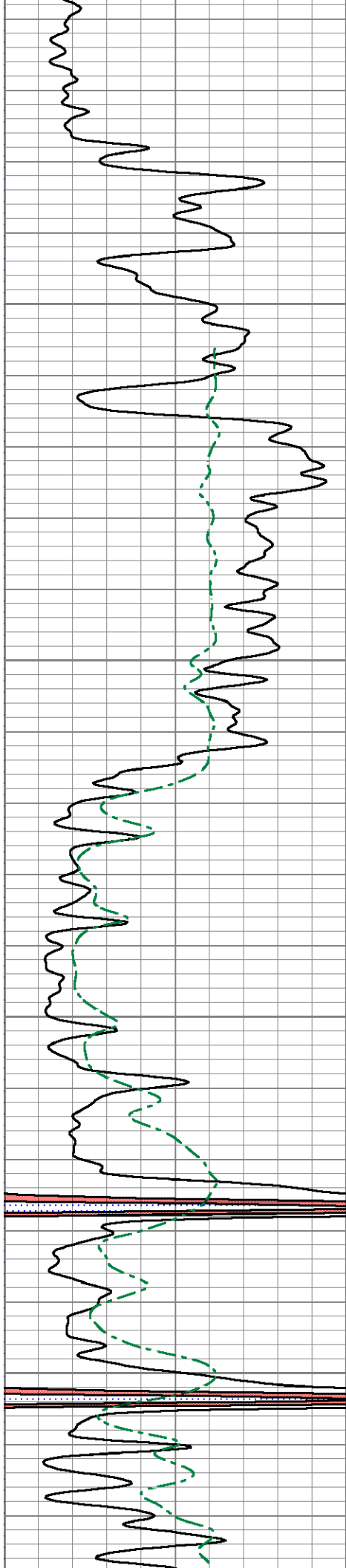




Database File ow1-8638 colt energy.db
 Dataset Pathname DIL/pass1.1
 Presentation Format dil5mdcol
 Dataset Creation Thu May 08 09:40:37 2014
 Charted by Depth in Feet scaled 1:240

0	Gamma Ray (GAPI)	150	0.2	Deep Resistivity (Ohm-m)	2000
0	SP (mV)	200	0.2	Medium Resistivity (Ohm-m)	2000
			0.2	Shallow Resistivity (Ohm-m)	2000



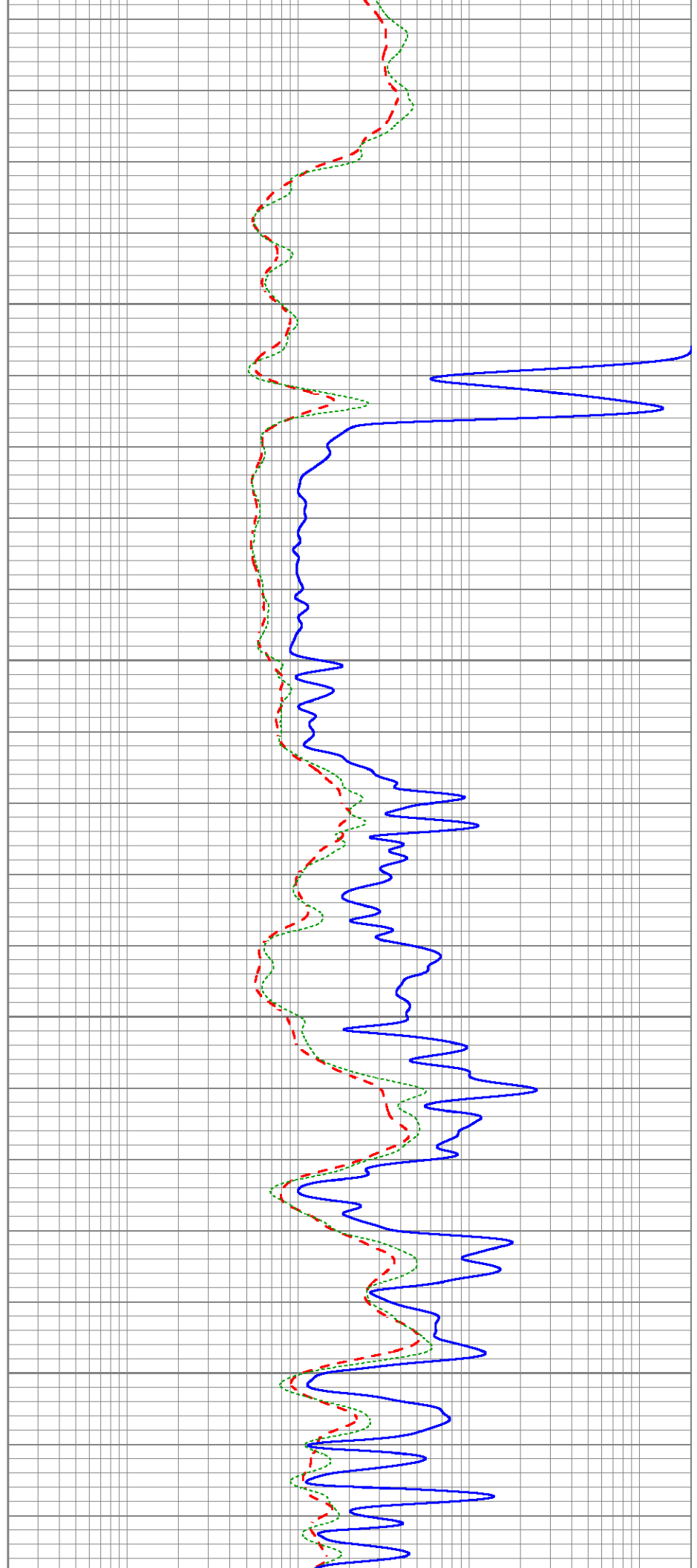


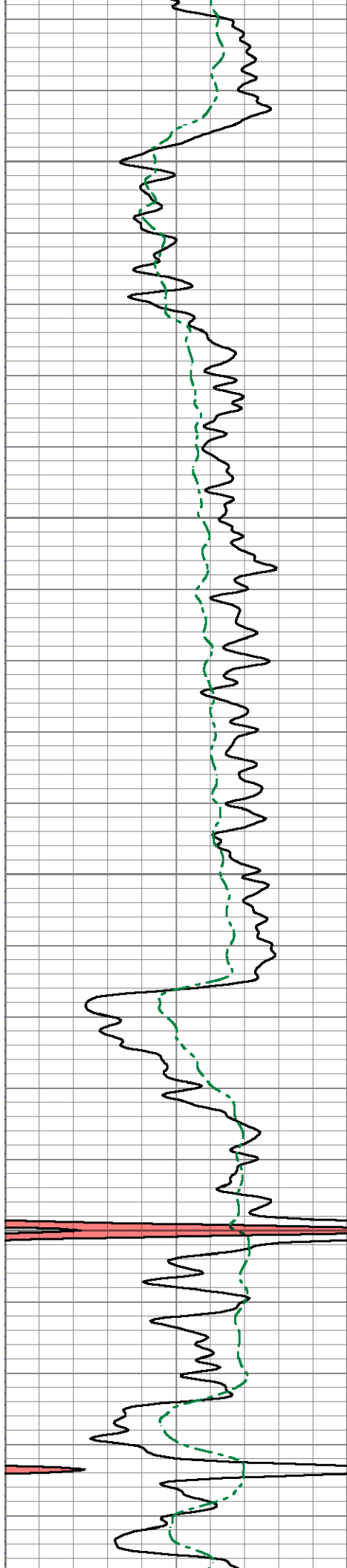
200

250

300

350



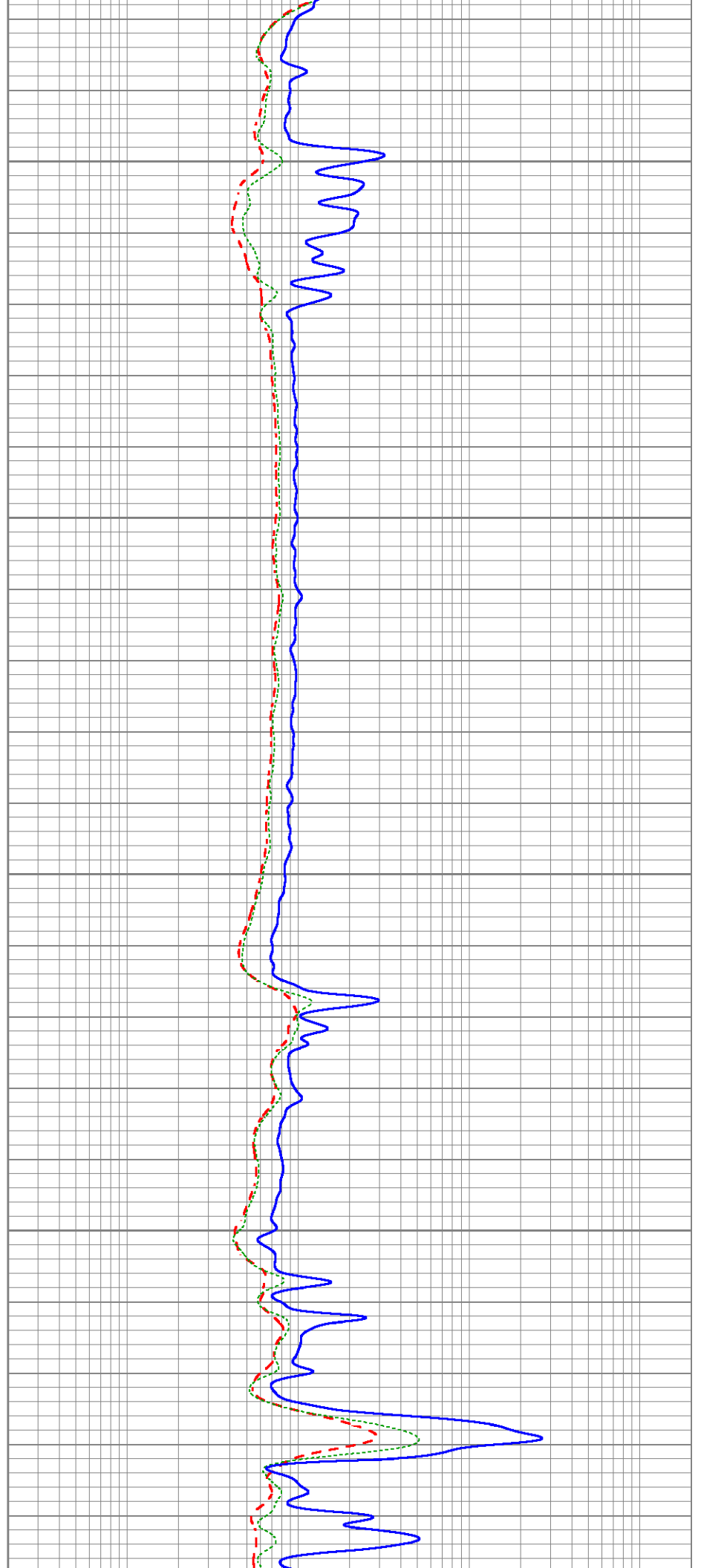


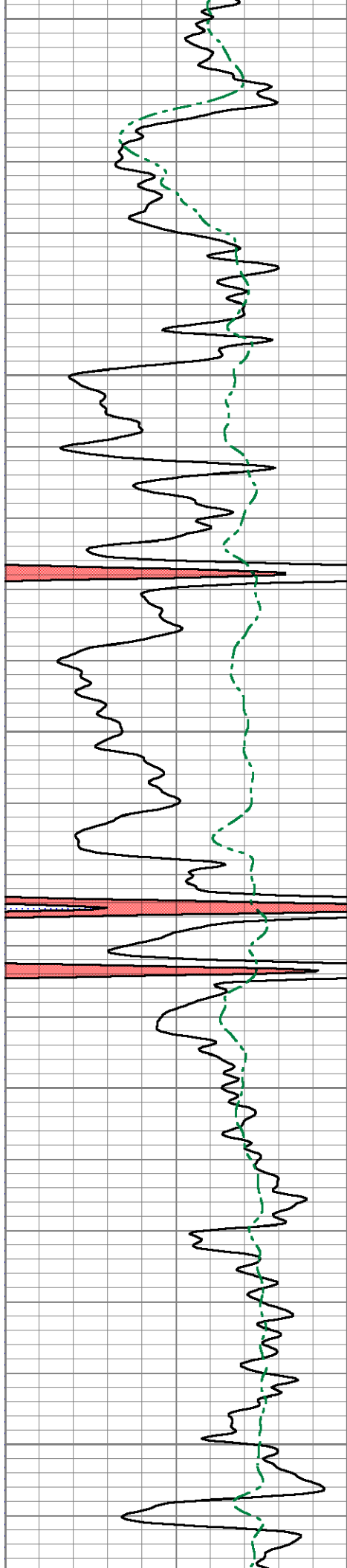
400

450

500

550





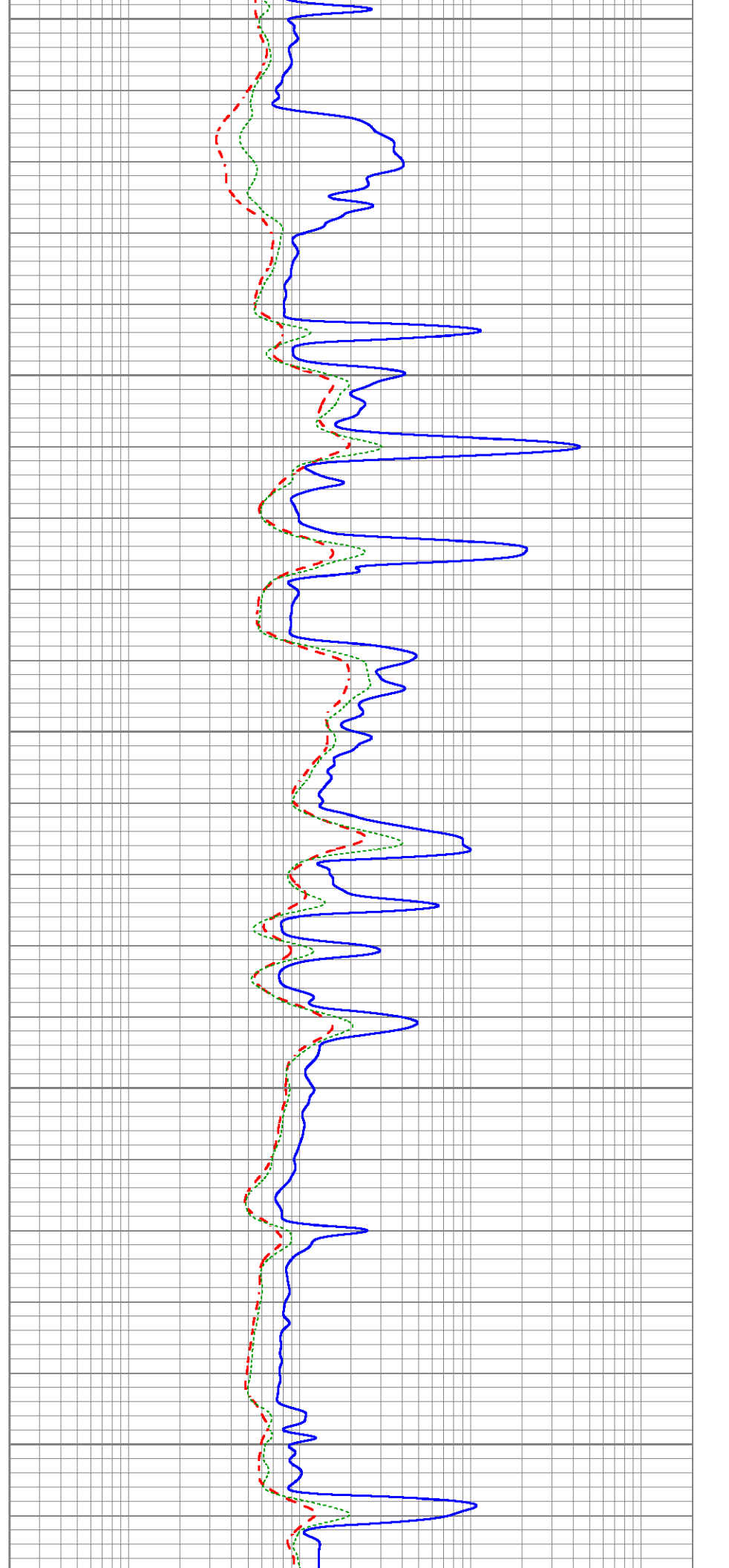
600

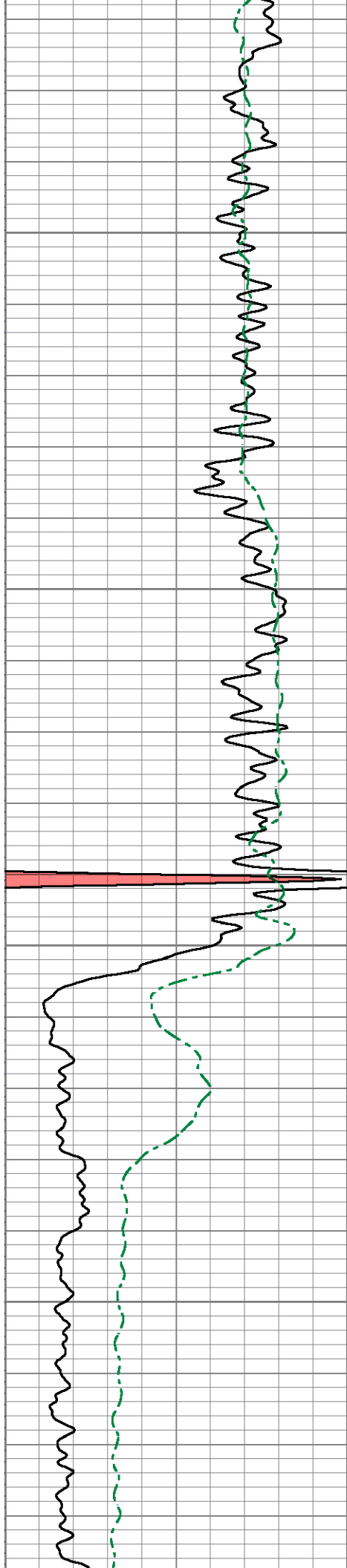
650

700

750

800



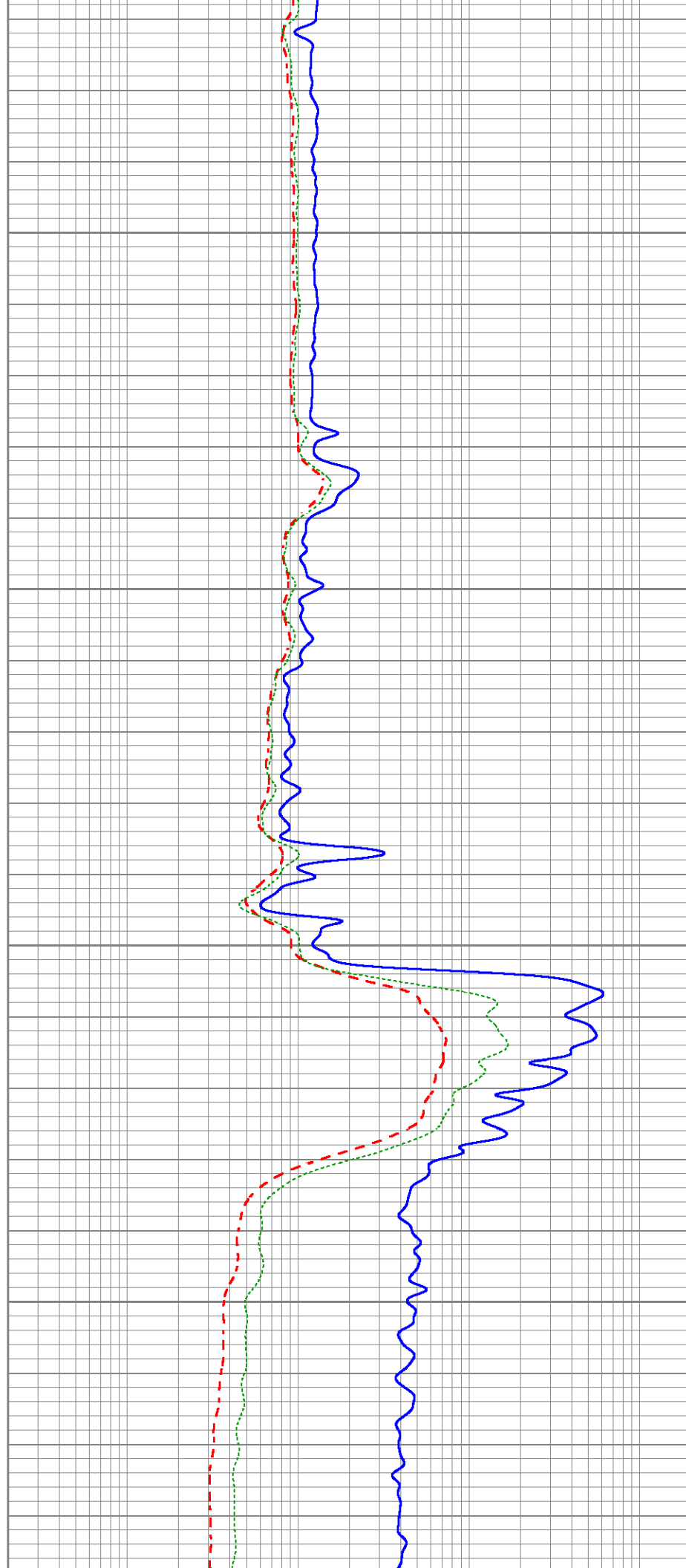


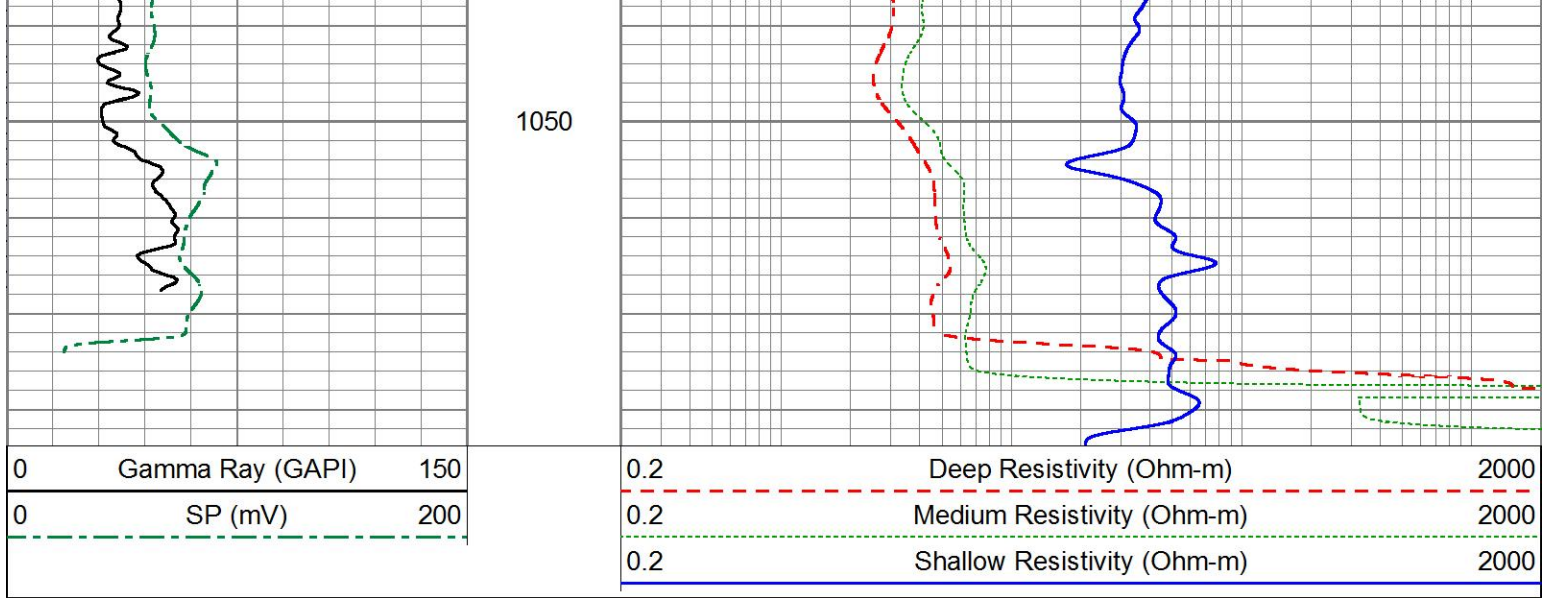
850

900

950

1000





Sensor	Offset (ft)	Schematic	Description	Length (ft)	O.D. (in)	Weight (lb)
			Cable-CableHead Isulation Sub	1.42	3.00	20.00
SP CILD	10.92 10.92		DIL-GEAR (159) Dual Induction Electrical Log	21.36	4.00	345.00
CILM	7.00					
RLL3	1.67					

Dataset: ow1-8638 colt energy.db: field/well/DIL/pass1
 Total length: 22.78 ft
 Total weight: 365.00 lb
 O.D.: 4.00 in