



MIDWEST SURVEYS
 LOGGING - PERFORATING - CONSUL TING SERVICES
 P.O. Box 68, Osawatomie, KS 66064
 913.765.2128

GAMMA RAY / NEUTRON / CCL

File No. _____

Company **Colt Energy, Inc**

Well **Cline No. E-3**

Field **Iola**

County **Allen** State **Kansas**

Location **399' FNL & 730' FEL**

SE-NW-NE-NE

Other Services **Perforate**

Sec. **16** Twp. **24S** Rge. **18E** Elevation **953'**

Permament Datum **GL** K.B. **NA**

Log Measured From **GL** D.F. **NA**

Drilling Measured From **GL** G.L. **953'**

Date **05-20-2014**

Run Number **One**

Depth Logger **1020.0**

Bottom Logged Interval **1007.3**

Top Log Interval **20.0**

Fluid Level **Full**

Type Fluid **Water**

Density / Viscosity **NA**

Salinity - PPM Cl **NA**

Max. Recorded Temp **NA**

Estimated Cement Top **0.0**

Equipment No. **107** Orientation **Osawatimie**

Recorded By **Steve Mundsich**

Witnessed By **John Amerman**

BORE-HOLE RECORD				CASING RECORD				
Run	No.	BIT	FROM	TO	SIZE	WEIGHT	FROM	TO
One	12.35"	0.0	22.0	8.635'	24.0 #	0.0	22.0	22.0
Two	6.75"	22.0	1020.0	4.50'	10.5 #	0.0	1012.25	1012.25
					Barite	Set	At	1009.25

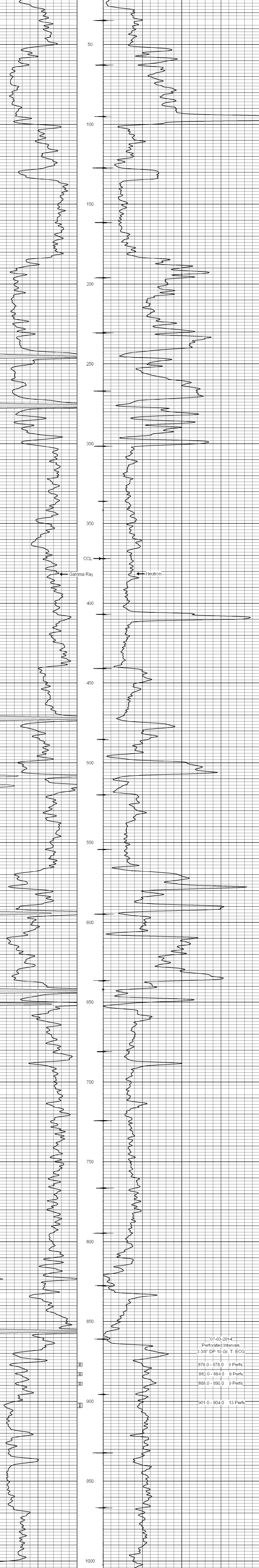
<<< Fold Here >>>

All interpretations are opinions based on inferences from electrical or other measurements and we cannot and do not guarantee the accuracy or correctness of any interpretation, and we shall not, except in the case of gross or willful negligence on our part, be liable or responsible for any loss, costs, damages, or expenses incurred or sustained by anyone resulting from any interpretation made by any of our officers, agents or employees. These interpretations are also subject to our general terms and conditions set out in our current Price Schedule.

Comments

Drilling Contractor :
Finny Drilling Company

Database File: cline 3e.db
 Dataset Pathname: pass1
 Presentation Format: gr-n-ccl
 Dataset Creation: Fri Jun 20 09:49:34 2014 by Log SCH 111116
 Charted by: Depth in Feet scaled 1:240



07-03-2014
 Perforated Intervals
 3 3/8" DP 19 Gr. T. ECG