



**MIDWEST SURVEYS**  
 LOGGING - PERFORATING - CONSULTING SERVICES  
 P.O. Box 88, Osawatomie, KS 66064  
 913 / 755 - 2128

**GAMMA RAY / NEUTRON / CCL**

File No. \_\_\_\_\_

Company **Colt Energy, Inc**

Well **Knoble No. KE-3**

Field **Iola**

County **Allen**

State **Kansas**

Location **935 FSL & 495 FWL**

**SE-NW-SW-SW**

Other Services  
Perforate

Sec. 4  
Permament Datum  
Log Measured From  
Drilling Measured From

Typ. 24S  
Elev. 18e  
Elevation 1010'  
K.B. NA  
D.F. NA  
G.L. 1010'

Date 05-19-2014

Run Number One

Depth Driller 1092.0

Depth Logger 1052.8

Bottom Logged Interval 1051.8

Top Log Interval 20.0

Fluid Level Full

Type Fluid Water

Density / Viscosity NA

Salinity / PPM Cl NA

Max. Recorded Temp NA

Estimated Cement Top 0.0

Equipment No. Location 107 Osawatomie

Recorded By Steve Windisch

Witnessed By John Aneman

BOREHOLE RECORD

CASING RECORD

| Run No. | BIT    | FROM | TO     | SIZE   | WT    | FROM | TO     |
|---------|--------|------|--------|--------|-------|------|--------|
| One     | 12.25" | 0.0  | 21.4   | 8.625" | 24.0# | 0.0  | 21.4   |
| Two     | 6.75"  | 21.4 | 1092.0 | 4.50"  | 10.5# | 0.0  | 1073.0 |
|         |        |      |        |        | Set   | At   | 1058.0 |

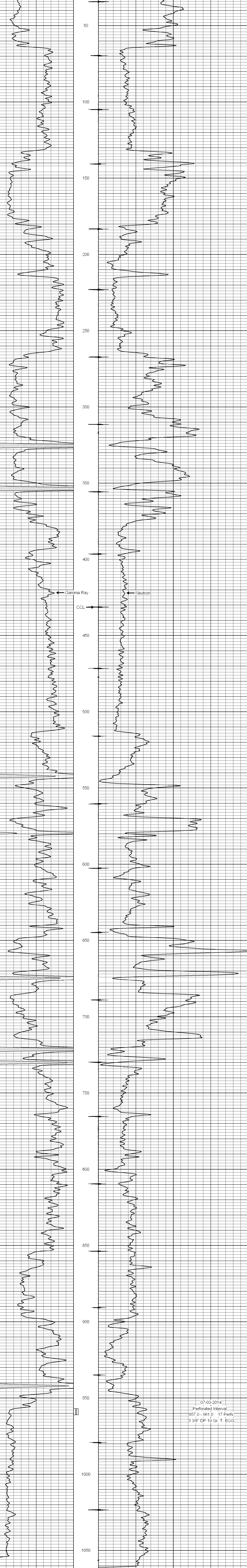
<<< Fold Here >>>

All interpretations are opinions based on inferences from electrical or other measurements and we cannot and do not guarantee the accuracy or correctness of any interpretation, and we shall not, except in the case of gross or willful negligence on our part, be liable or responsible for any loss, costs, damages, or expenses incurred or sustained by anyone resulting from any interpretation made by any of our officers, agents or employees. These interpretations are also subject to our general terms and conditions set out in our current Price Schedule.

Comments

Drilling Contractor :  
**Finnly Drilling Company**

Database File: knoble 3ke.db  
 Dataset Pathname: pass1  
 Presentation Format: gr-n-ccl  
 Dataset Creation: Thu Jun 19 16:24:07 2014 by Log SCH 111116  
 Charted by: Depth in Feet scaled 1:240



07-03-2014  
 Perforated Interval  
 957.0 - 961.0 17 Perfs.  
 3 3/8" DP 19 Gr. T. ECG