



MIDWEST SURVEYS
 LOGGING - PERFORATING - CONSUL TING SERVICES
 P.O. Box 68, Osawatomie, KS 66084
 913 / 765 - 2128

GAMMA RAY / NEUTRON / CCL

File No. _____

Company **Laymon Oil II, LLC**
 Well **Coffield No. 19-14**
 Field **Owl Creek**
 County **Woodson** State **Kansas**
 Location **1950' FSL & 4785' FEL**
NE-SW-NW-SW

Other Services
 Perforate

Sec. 17 Twp. 25S Rge. 16E
 Permian/Datum GL Elevation 965'
 Log Measured From GL
 Drilling Measured From GL

Date 07-18-2014
 Run Number One
 Depth Driller 10230.0
 Depth Logger 10090.0
 Bottom Logged Interval 10098.0
 Top Log Interval 20.0
 Fluid Level Full

Type Fluid Water
 Density / Viscosity NA
 Salinity - PPM Cl NA
 Max. Recorded Temp NA
 Estimated Cement Top 0.0
 Equipment No. 107 Location Osawatimie
 Recorded By Steve Minkisch
 Witnessed By Mike Laymon

BORE-HOLE RECORD				CASING RECORD			
Run No.	BIT	FROM	TO	SIZE	WEIGHT	FROM	TO
One	12.25"	0.0	40.0	8.625"	240 #	0.0	40.0
Two	6.00"	40.0	10200.0	2.875"	6.5 #	0.0	10120.0

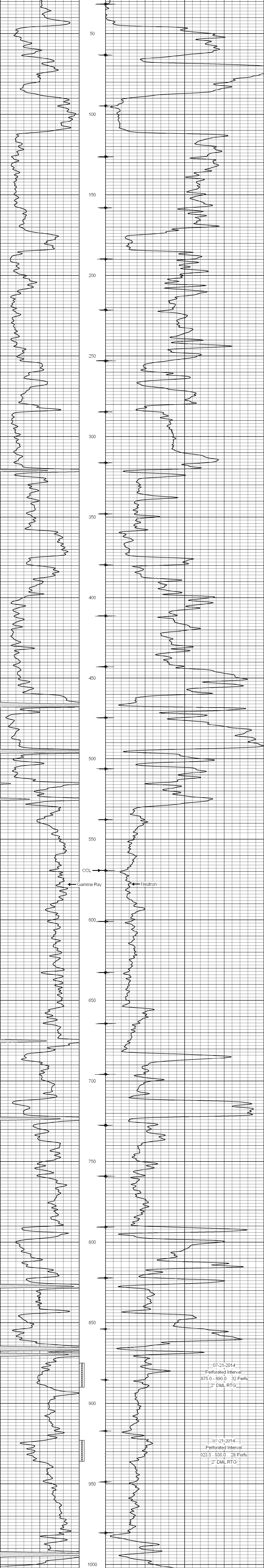
<<< Fold Here >>>

All interpretations and opinions based on inferences from electrical or other measurements and we cannot and do not guarantee the accuracy or correctness of any interpretation, and we shall not, except in the case of gross or willful negligence on our part, be liable or responsible for any loss, costs, damages, or expenses incurred or sustained by anyone resulting from any interpretation made by any of our officers, agents or employees. These interpretations are also subject to our general terms and conditions set out in our current Price Schedule.

Comments

Drilling Contractor :
 Laymon Oil II LLC

Database File: coffield 19-14.db
 Dataset Pathname: pass1
 Presentation Format: gr-n-ccl
 Dataset Creation: Fri Jul 18 10:35:21 2014 by Log SCH 111116
 Charted by: Depth in Feet scaled 1:240



07-21-2014
 Perforated Interval
 875.0 - 890.0 32 Perfs
 2" DML RTG

07-21-2014
 Perforated Interval
 923.0 - 936.0 28 Perfs
 2" DML RTG

0 150 Gamma Ray (cps) 150
 10 2100 Neutron (cps) 2100