



**DUAL INDUCTION  
LL3/GR LOG**

Company COLT ENERGY, INC.  
Well KNOX # S6-i  
Field MORAN  
County ALLEN  
State KANSAS

Company COLT ENERGY, INC.  
Well KNOX # S6-i  
Field MORAN  
County ALLEN State KANSAS

**Location:** API #: 15-001-31136-0000  
W/2 W/2 NE NE  
690' FNL & 1270' FEL  
SEC 23 TWP 25S RGE 19E  
Permanent Datum GL Elevation 1063'  
Log Measured From GL  
Drilling Measured From GL  
Other Services  
CDL/SWN  
Elevation  
K.B. ---  
D.F. ---  
G.L. 1063'

Date	7-29-2014
Run Number	ONE
Depth Driller	990'
Depth Logger	982'
Bottom Logged Interval	980'
Top Log Interval	SURFACE
Casing Driller	8 5/8" @ 24'
Casing Logger	8 5/8" @ 24'
Bit Size	6 3/4"
Type Fluid in Hole	WATER/MUD
Density / Viscosity	
pH / Fluid Loss	
Source of Sample	
Rm @ Meas. Temp	
Rmf @ Meas. Temp	
Rmc @ Meas. Temp	
Source of Rmf / Rmc	
Rm @ BHT	
Time Circulation Stopped	
Time Logger on Bottom	
Maximum Recorded Temperature	
Equipment Number	OW2
Location	HOMINY, OK
Recorded By	LOWERY
Witnessed By	MR. ASHLOCK

<<< Fold Here >>>

All interpretations are opinions based on inferences from electrical or other measurements and we cannot and do not guarantee the accuracy or correctness of any interpretation, and we shall not, except in the case of gross or willful negligence on our part, be liable or responsible for any loss, costs, damages, or expenses incurred or sustained by anyone resulting from any interpretation made by any of our officers, agents or employees. These interpretations are also subject to our general terms and conditions set out in our current Price Schedule.

**Comments**

OW2-8696  
CREW : SHAMBLES



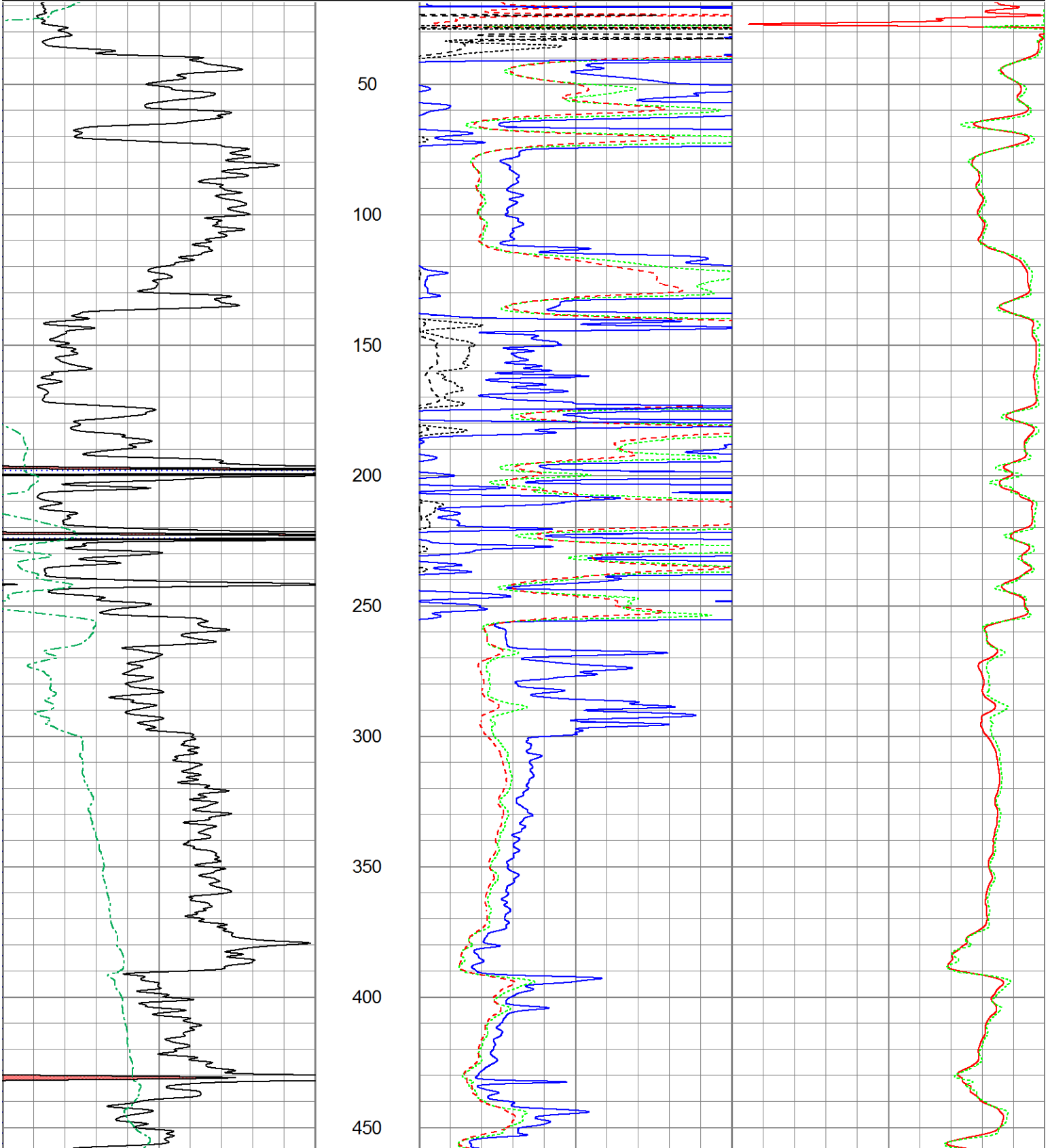
**2" DIL SECTION**

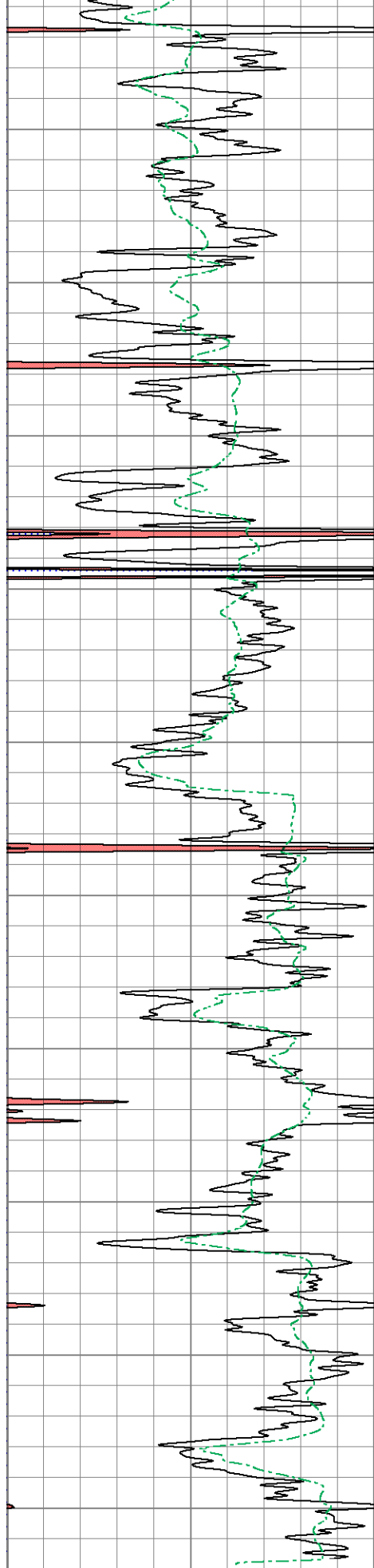
Database File ow2-8696 colt energy.db  
 Dataset Pathname DIL/pass1.4  
 Presentation Format dil2mdcol  
 Dataset Creation Tue Jul 29 13:32:00 2014  
 Charted by Depth in Feet scaled 1:600

0	GR (GAPI)	150
0	SP (mV)	200

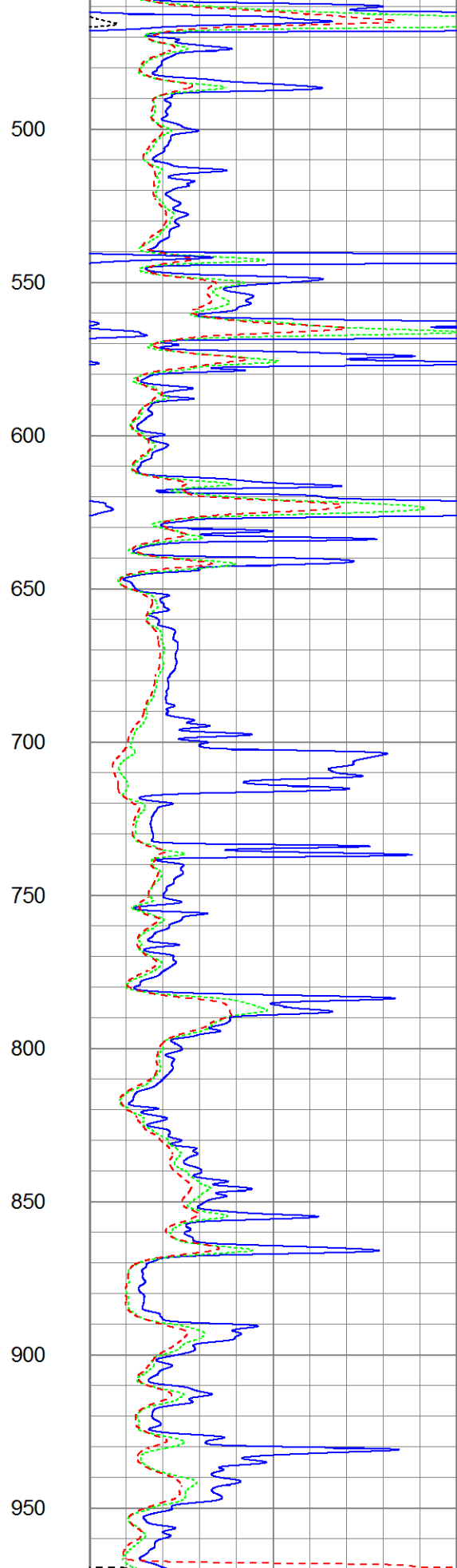
0	RLL3 (Ohm-m)	50
0	RILM (Ohm-m)	50
0	RILD (Ohm-m)	50

1000	CILD (mmho/m)	0
1000	CILM (mmho/m)	0

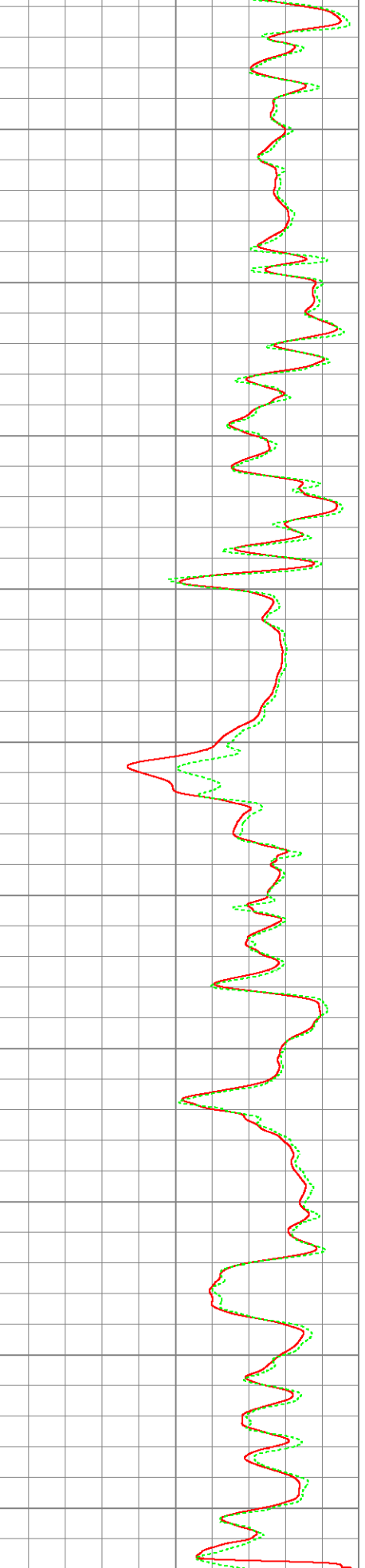




0	GR (GAPI)	150
0	SP (mV)	200



0	RLL3 (Ohm-m)	50
0	RILM (Ohm-m)	50
0	RILD (Ohm-m)	50



0	RILD (Ohm-m)	50
1000	CILD (mmho/m)	0
1000	CILM (mmho/m)	0

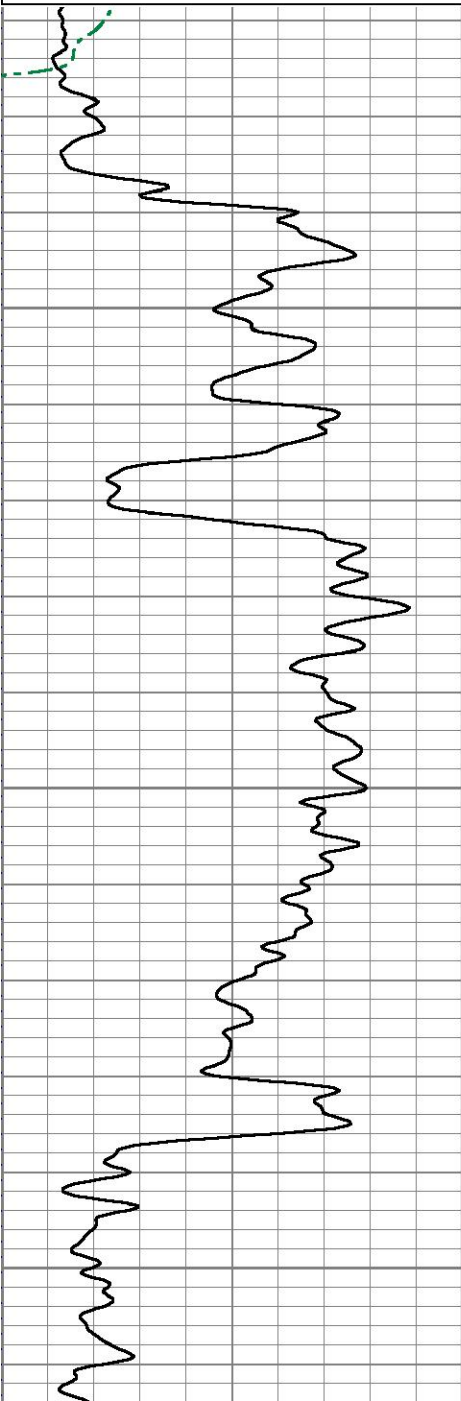


# 5" DIL SECTION

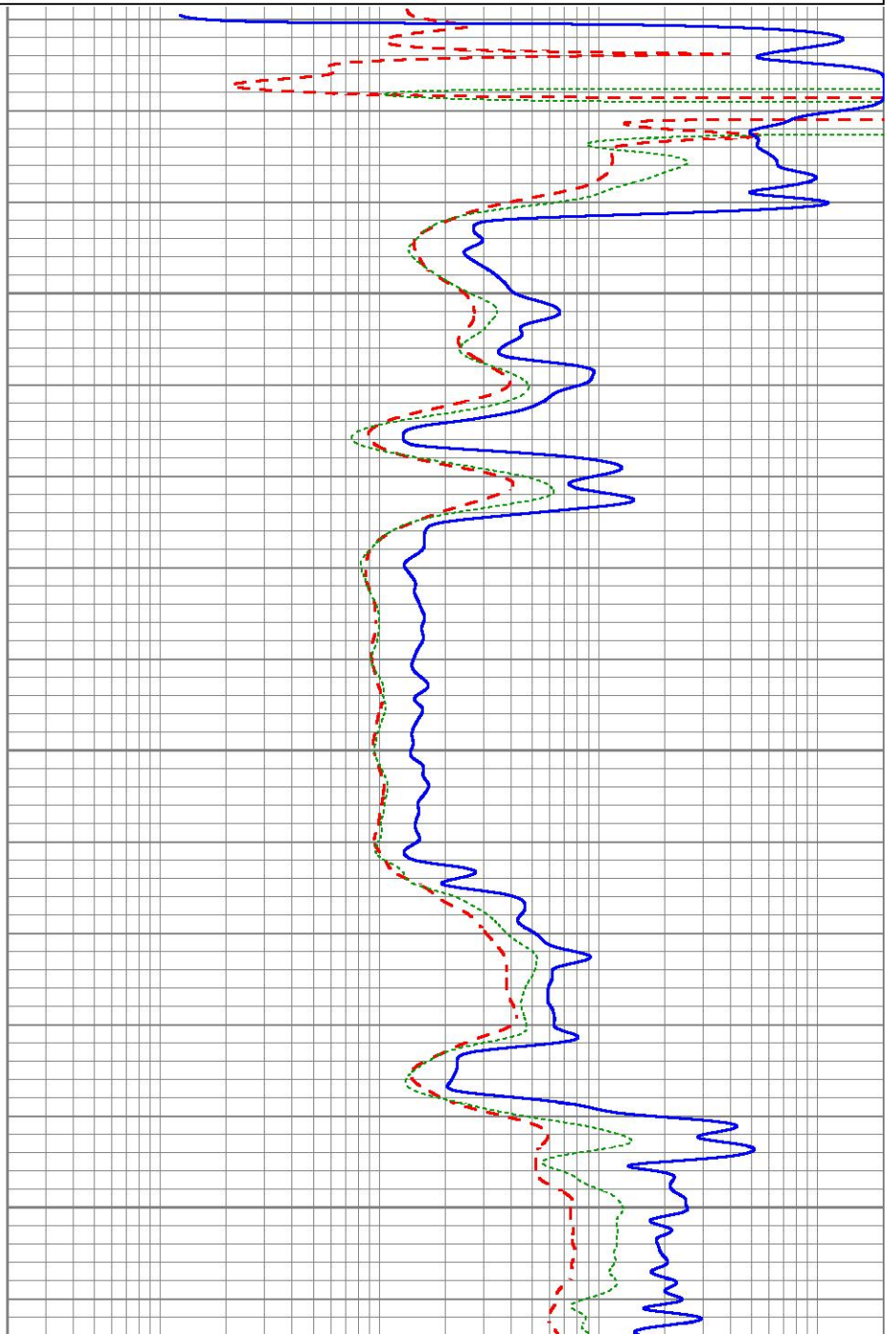
Database File ow2-8696 colt energy.db  
 Dataset Pathname DIL/pass1.3  
 Presentation Format dil5mdcol  
 Dataset Creation Tue Jul 29 13:31:54 2014  
 Charted by Depth in Feet scaled 1:240

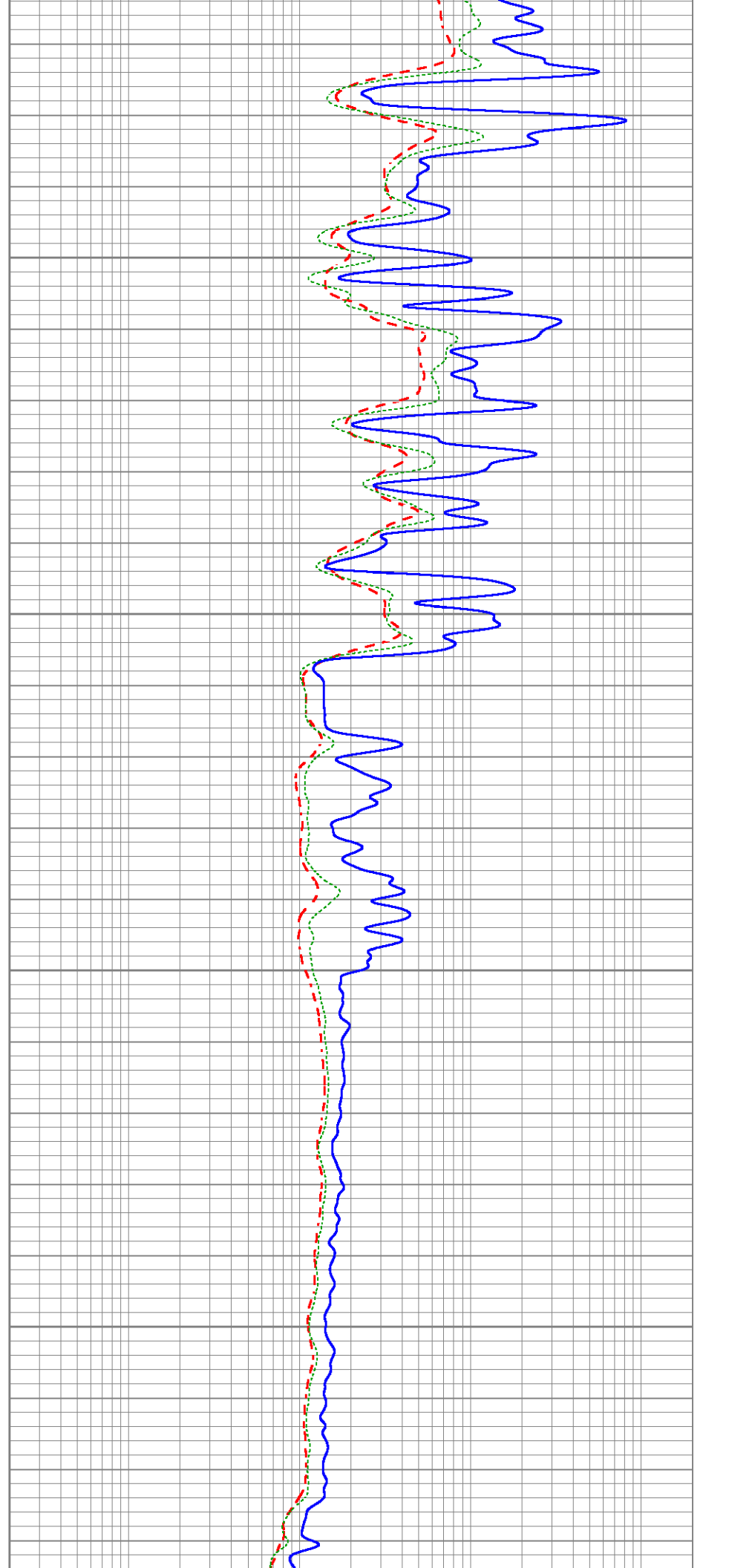
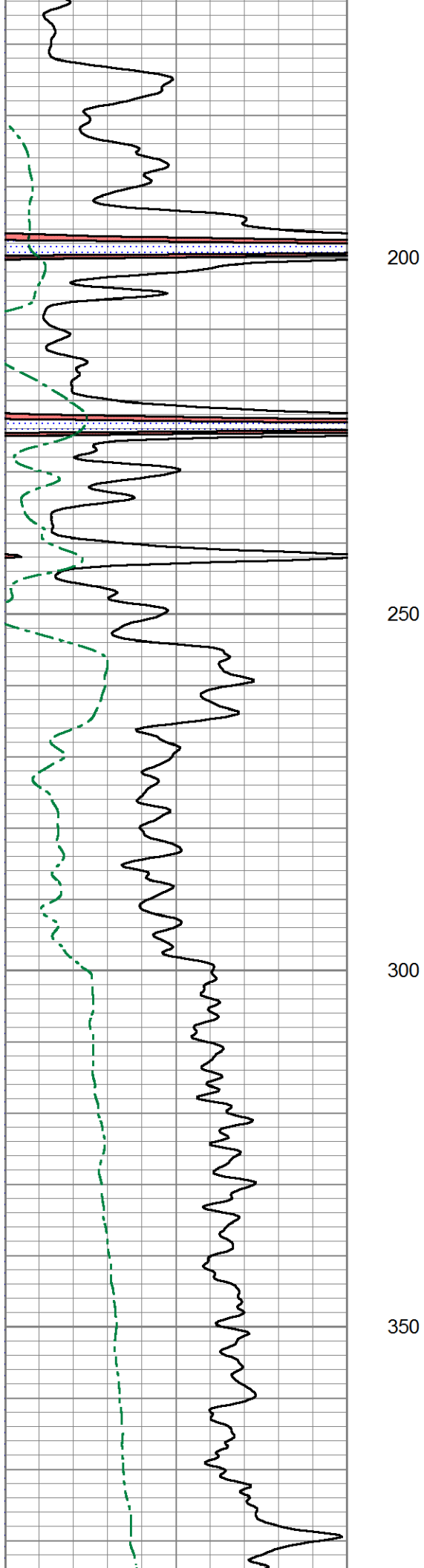
0	Gamma Ray (GAPI)	150
0	SP (mV)	200

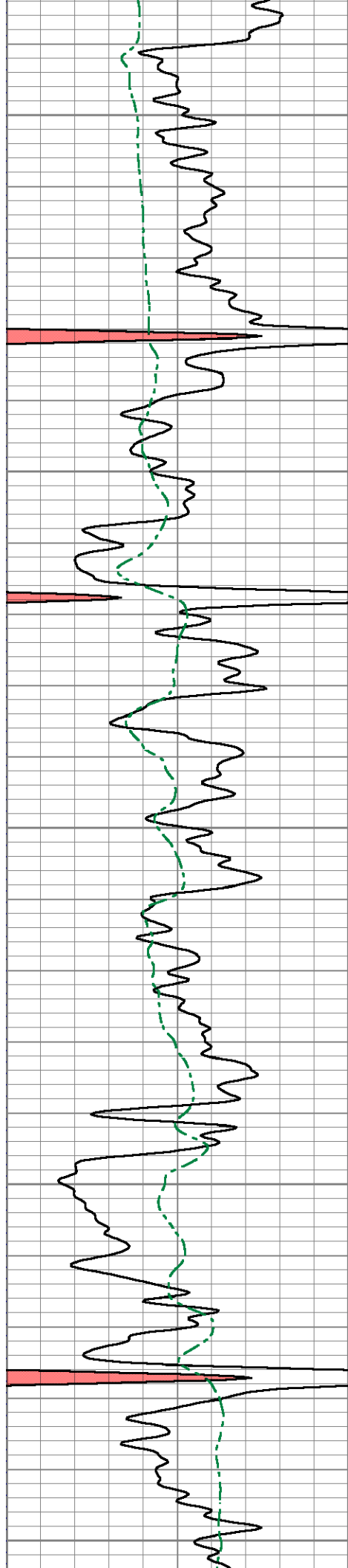
0.2	Deep Resistivity (Ohm-m)	2000
0.2	Medium Resistivity (Ohm-m)	2000
0.2	Shallow Resistivity (Ohm-m)	2000



50  
100  
150







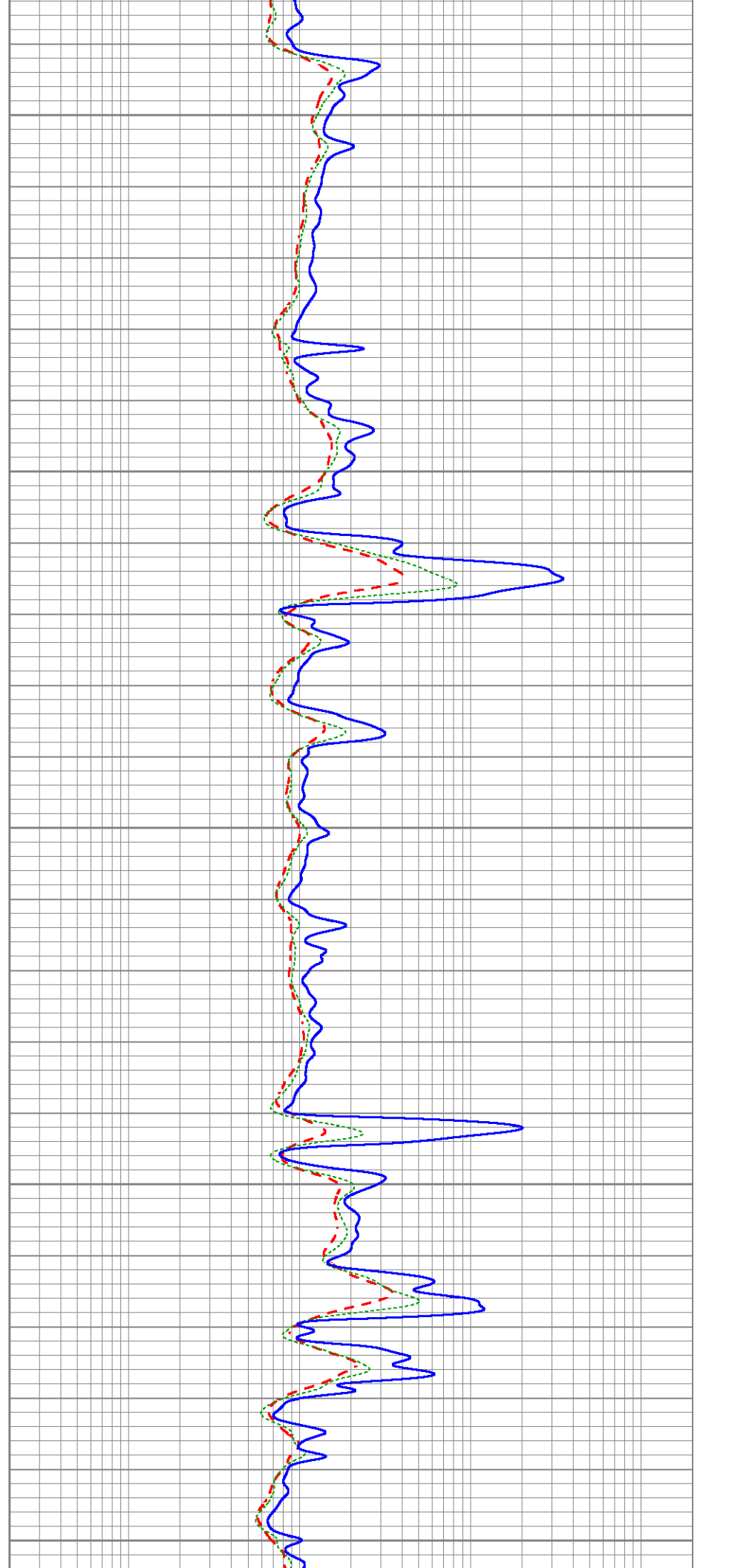
400

450

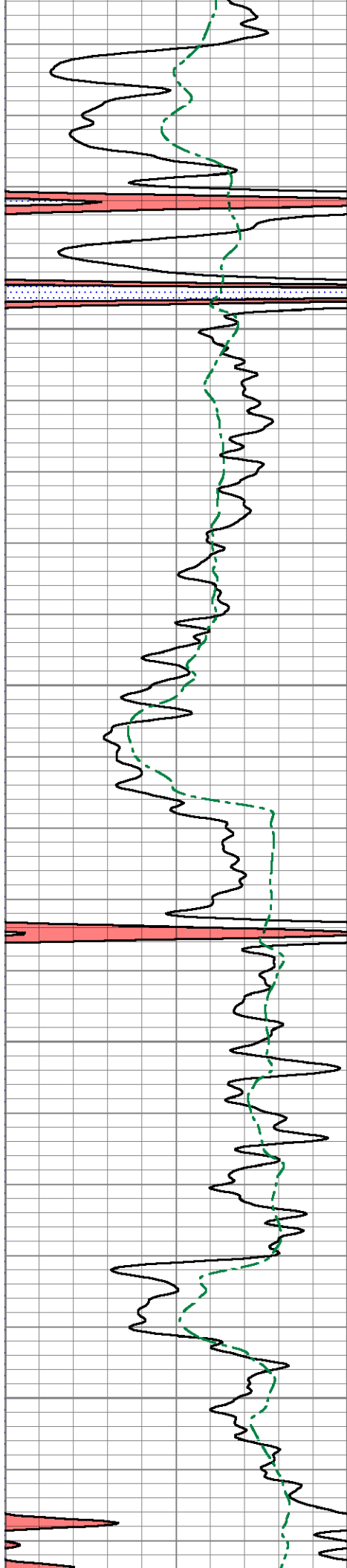
500

550

600





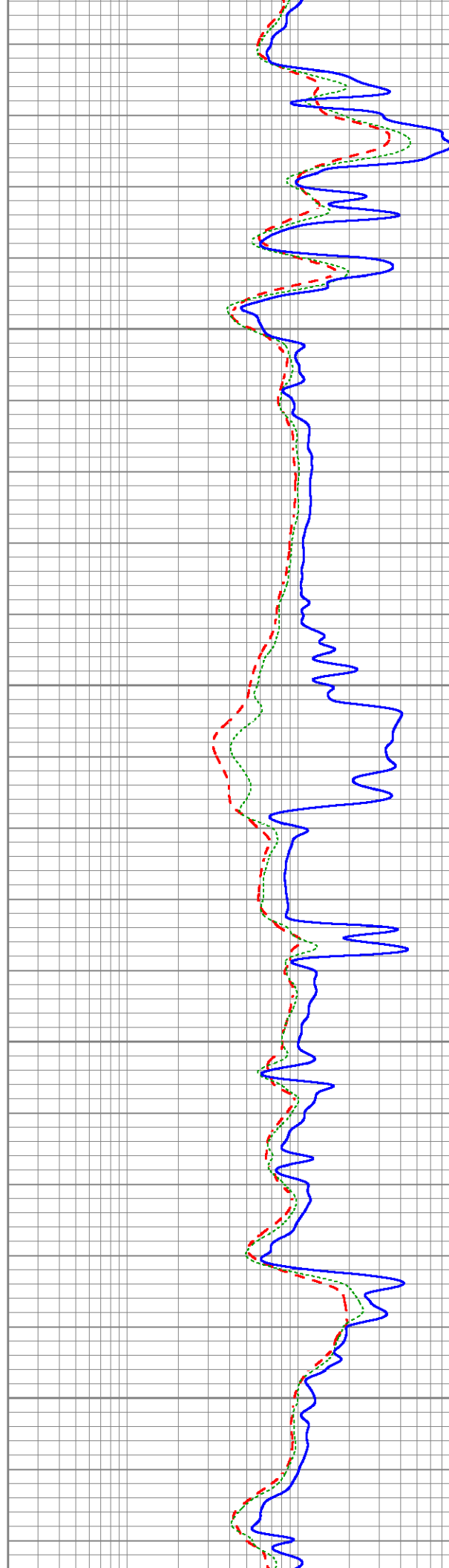


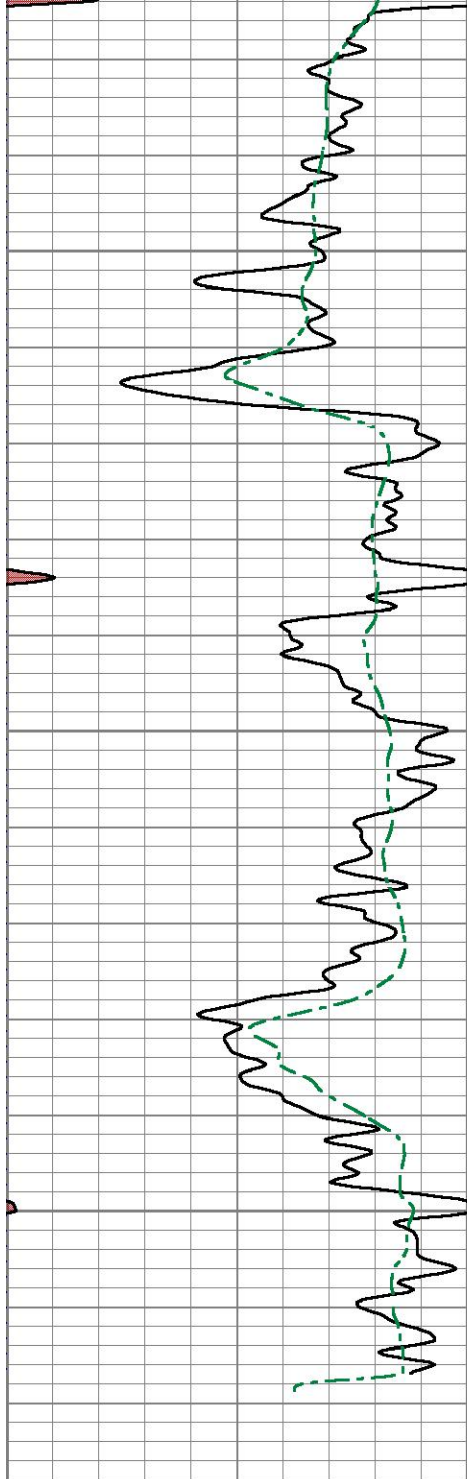
650

700

750

800



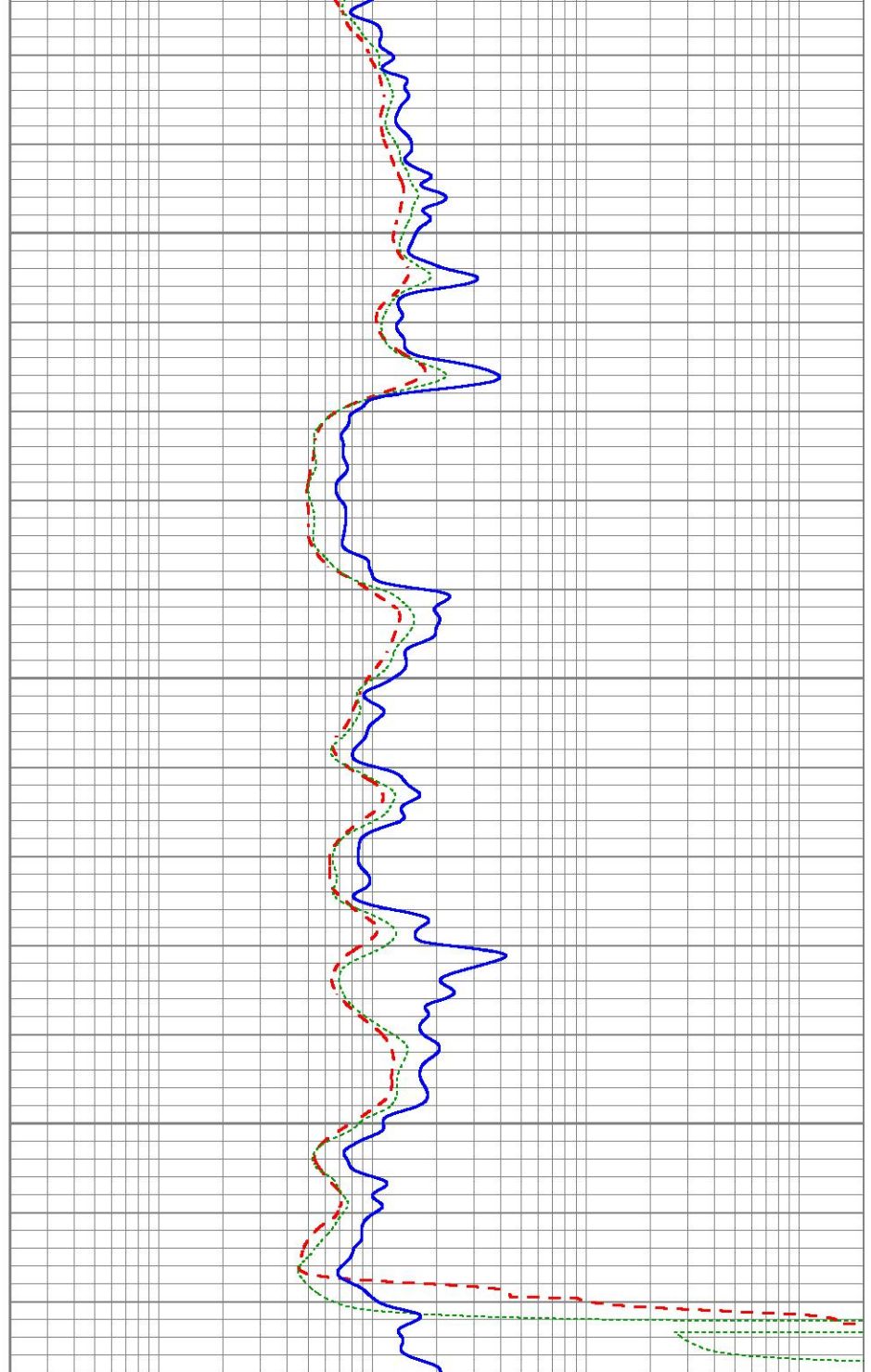


850

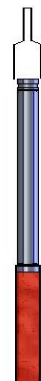
900

950

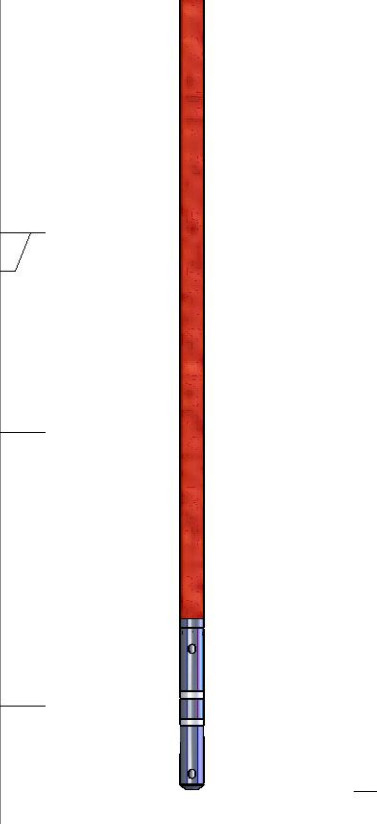
0	Gamma Ray (GAPI)	150
0	SP (mV)	200



0.2	Deep Resistivity (Ohm-m)	2000
0.2	Medium Resistivity (Ohm-m)	2000
0.2	Shallow Resistivity (Ohm-m)	2000

Sensor	Offset (ft)	Schematic	Description	Length (ft)	O.D. (in)	Weight (lb)
			Cable-CableHead Isulation Sub	1.42	3.00	20.00



SP CILD	10.92 10.92		DIL-GEAR (159) Dual Induction Electrical Log	21.36	4.00	345.00
CILM	7.00					
RLL3	1.67					
		Dataset: ow2-8696 colt energy.db: field/well/DIL/pass1 Total length: 22.78 ft Total weight: 365.00 lb O.D.: 4.00 in				