



GAMMA RAY  
NEUTRON  
COMPLETION LOG

Company MIDWAY OIL COMPANY  
Well TANNAHILL #A-16  
Field VERNON  
County WOODSON  
State KANSAS

Location: 485' FNL & 825' FML  
SW NE NW NW  
SEC 4 TWP 24S RGE 16E  
API #: 15-20728773-00-00  
Other Services

Permanent Datum SEC 4 TWP 24S RGE 16E  
Log Measured From G.L. Elevation 1054.53  
Dilling Measured From G.L. D.F. 1054.53  
Date 12-16-2013  
Run Number 1-NEWMELL  
Depth Logger 1110.9'

Top Log Interval SURFACE  
Bottom Logged Interval 1110.9'  
Fluid Level FULL  
Type Fluid WATER  
Production Casing 2 7/8" @ T.D.  
Max. Record Temp.  
Estimated Cement Top  
Calculated Cement Top  
Amount & Type Cement  
Drilling Contractor WOCO  
Equipment Number 107  
Location UDEB, D1  
Recorded By LRS, V.

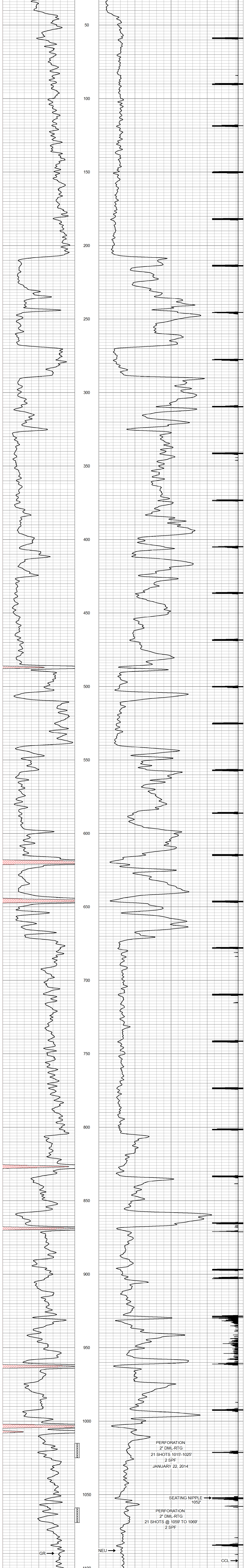
<<< Fold Here >>>  
All interpretations are opinions based on inferences from electrical or other measurements and we cannot and do not guarantee the accuracy or correctness of any interpretation, and we shall not, except in the case of gross or willful negligence on our part, be liable or responsible for any loss, costs, damages, or expenses incurred or sustained by anyone resulting from any interpretation made by any of our officers, agents or employees. These interpretations are also subject to our general terms and conditions set out in our current Price Schedule.

Comments  
  
THANK YOU

Sensor	Offset (ft)	Schematic	Description	Len (ft)	OD (in)	Wt (lb)
GR	7.59		GR-TITAN_169 (TIT169_001) Titan 1 11/16" Gamma Ray	4.75	1.69	20.00
CCL	5.05		CCL-TITAN_169 (TIT169) Titan 1 11/16" Logging CCL	1.83	1.69	7.50
NEU	0.63		NEU-TITAN_169 (TIT169_001) Titan 1 11/16" Neutron	4.33	1.69	20.00

Dataset: tannahill #a-16.db: field/well/run1/pass1  
Total Length: 10.92 ft  
Total Weight: 47.50 lb  
O.D.: 1.69 in

Database File: p:\logs\midway oil company, llc\tannahill #a-16\tannahill #a-16.db  
Dataset Pathname: pass1  
Presentation Format: gr-n-ccl  
Dataset Creation: Mon Dec 16 11:06:24 2013 by Log Std Casedhole 07122  
Charted by: Depth in Feet scaled 1.240



PERFORATION 2" DML-RTG 21 SHOTS 1015'-1025' 2 SPF JANUARY 22, 2014  
SEATING NIPPLE 1052'  
PERFORATION 2" DML-RTG 21 SHOTS @ 1059' TO 1069' 2 SPF  
GR → NEU → CCL →