



**GAMMA RAY
NEUTRON
CEMENT BOND
COMPLETION LOG**

Company **A X & P, INC.**
 Well **UNIT 1 #WW 29DE**
 Field **NEODESHA**
 County **WILSON**
 State **KANSAS**

Company **A X & P, INC.**
 Well **UNIT 1 #WW 29DE**
 Field **NEODESHA**
 County **WILSON** State **KANSAS**

Location: **API # : 15-205-28271-00-00**
2430' FSL & 4140' FEL
NE NE NW SW
SEC 29 TWP 30S RGE 16E

Permanent Datum	G.L.	Elevation	798EST.	Elevation
Log Measured From	G.L.			K.B. D.F. G.L. 798EST.
Drilling Measured From	G.L.			

Date	7-30-2014		
Run Number	1-NEWWELL		
Depth Driller			
Depth Logger	840.6'		
Top Log Interval	SURFACE		
Bottom Logged Interval	840.6'		
Fluid Level	FULL		
Type Fluid	WATER		
Production Casing	2 7/8" @ 852'	@	@
Max. Recorded Temp.			
Estimated Cement Top			
Calculated Cement Top			
Amount & Type Cement			
Amount & Type Admix			
Drilling Contractor	TUBBS		
Equipment Number	107		
Location			
Recorded By	UDEN, D.		
Witnessed By	GILLMAN, T.		

<<< Fold Here >>>

All interpretations are opinions based on inferences from electrical or other measurements and we cannot and do not guarantee the accuracy or correctness of any interpretation, and we shall not, except in the case of gross or willful negligence on our part, be liable or responsible for any loss, costs, damages, or expenses incurred or sustained by anyone resulting from any interpretation made by any of our officers, agents or employees. These interpretations are also subject to our general terms and conditions set out in our current Price Schedule.

Comments

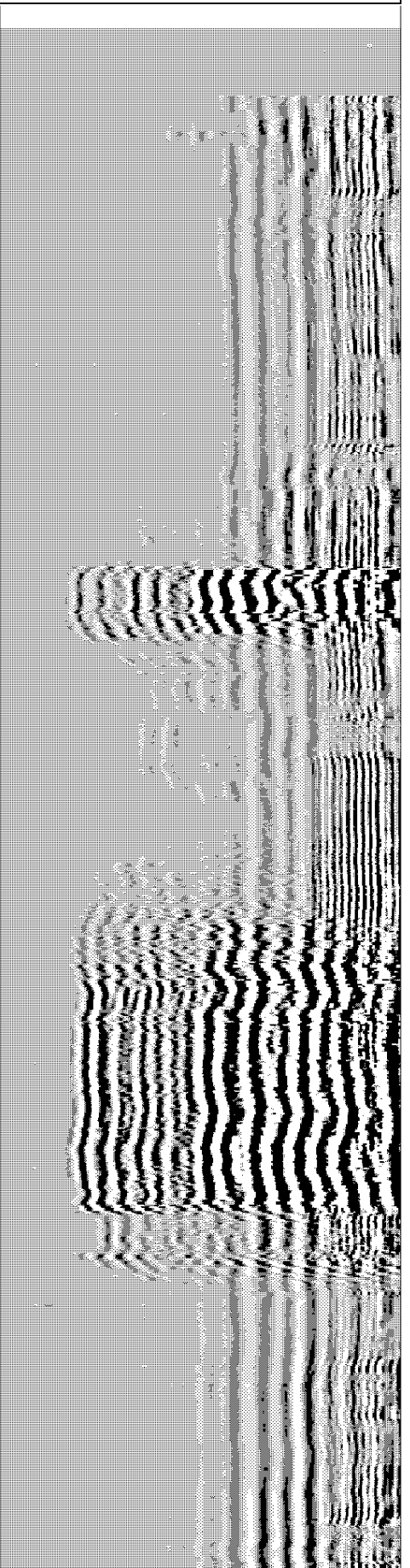
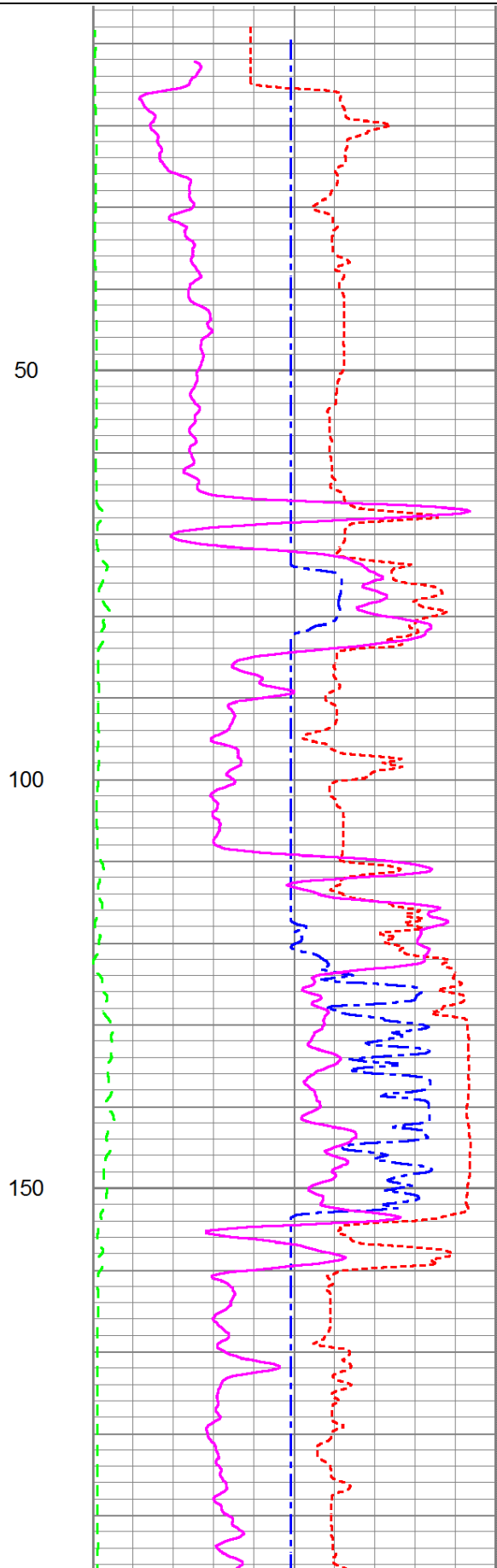
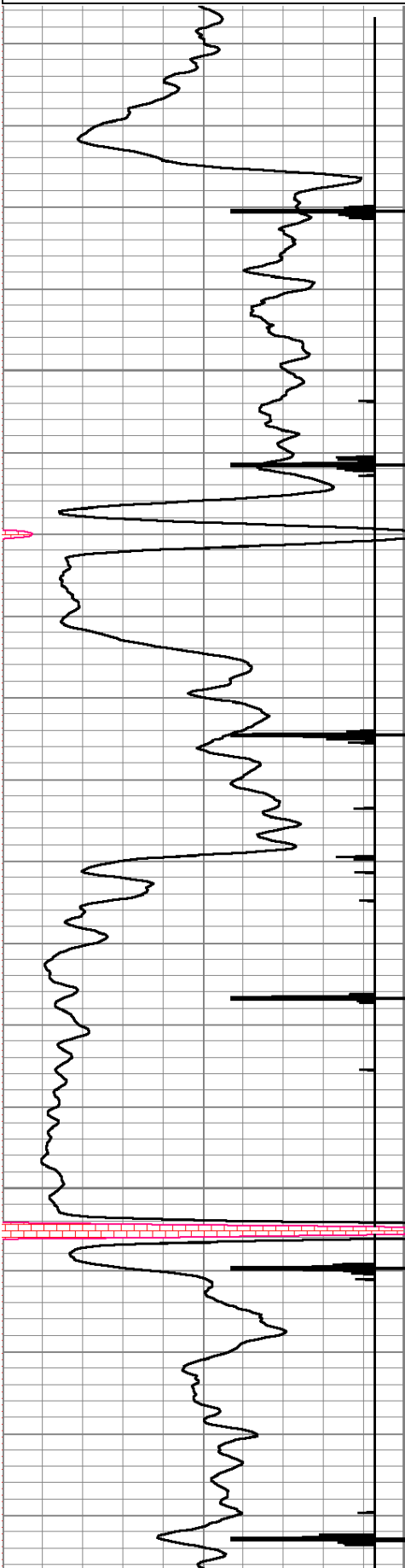
THANK YOU

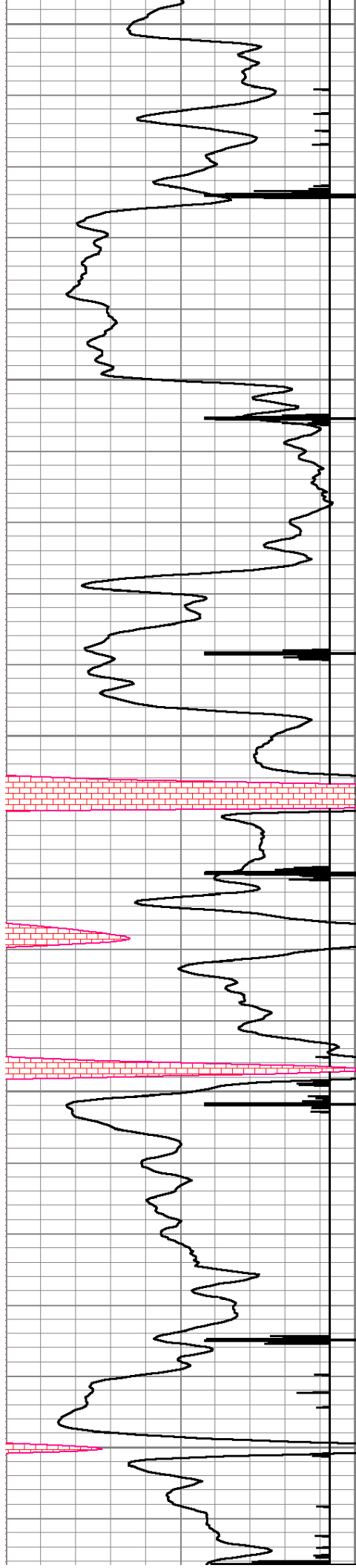
Sensor	Offset (ft)	Schematic	Description	Len (ft)	OD (in)	Wt (lb)

0	Gamma Ray	150
150	gr	300
13	CCL	-1

0	Amplitude (mV)	150
1200	TT3FT (usec)	200
1500	TT5FT (usec)	200
50	NEU	1350

200	VDL	1200
-----	-----	------





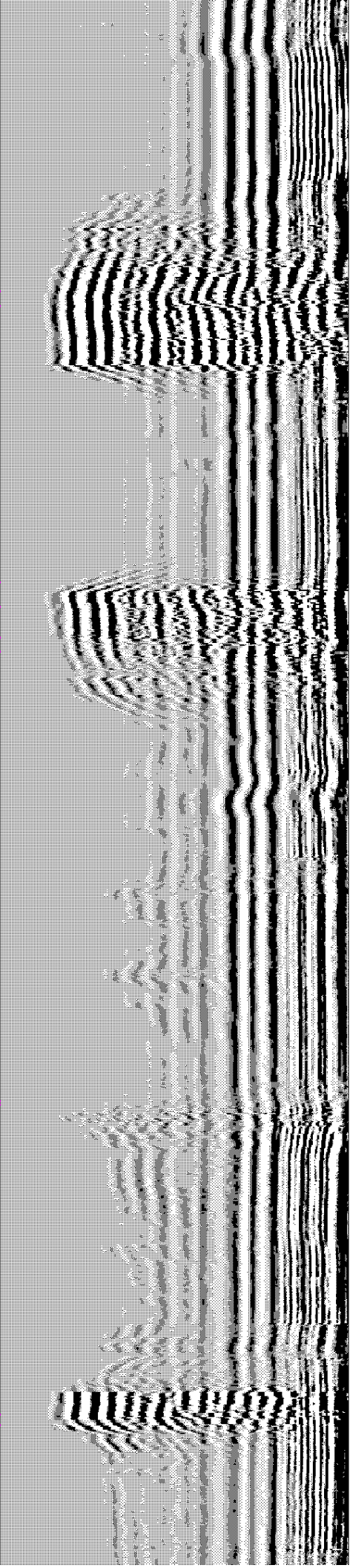
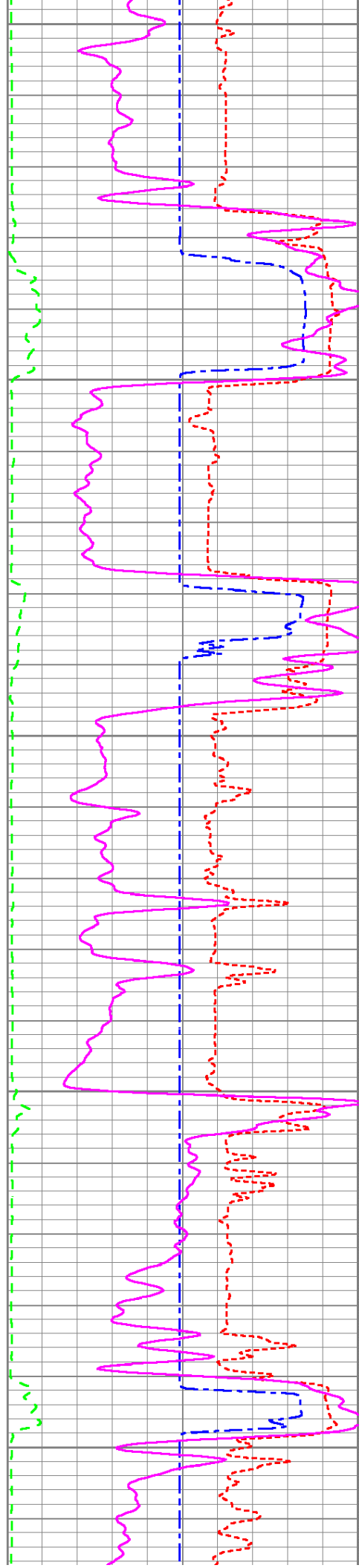
200

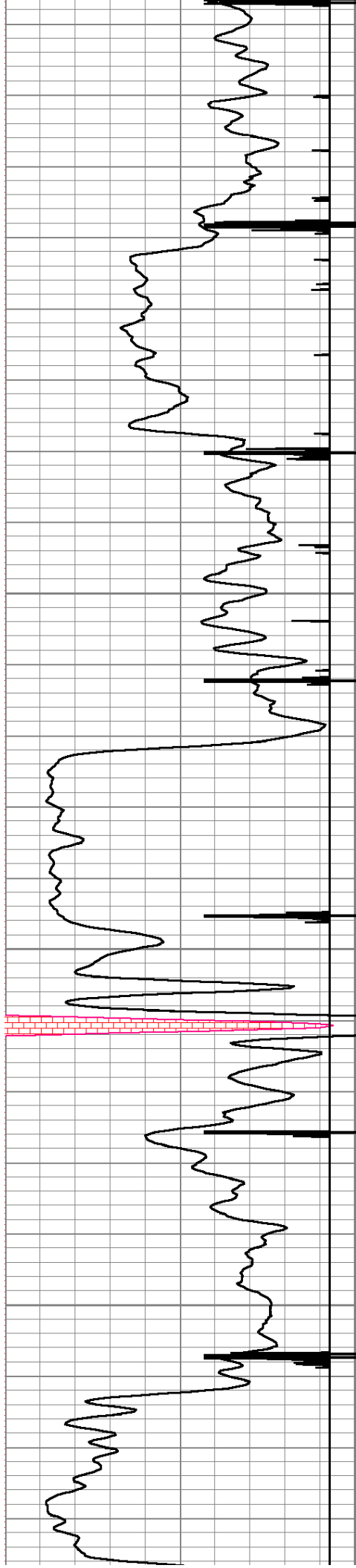
250

300

350

400



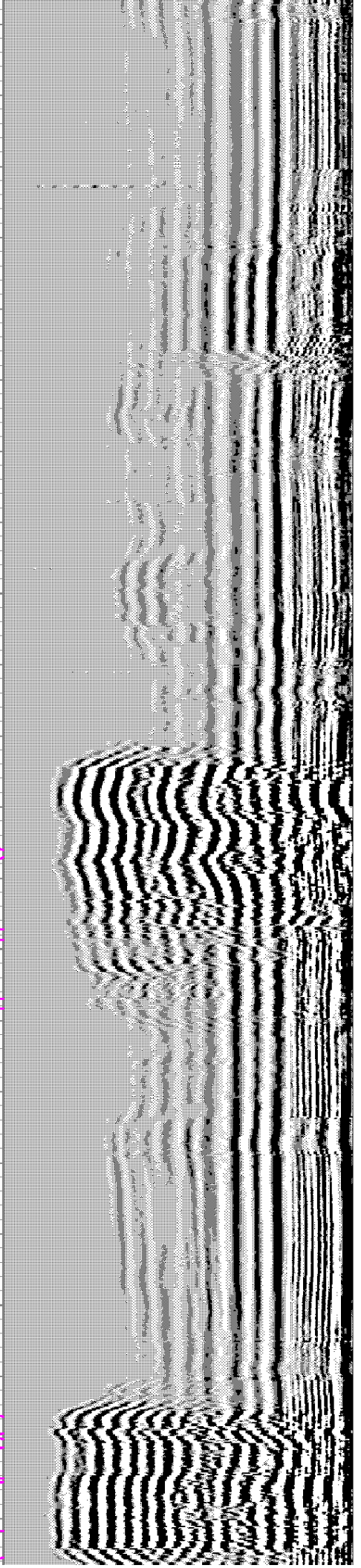
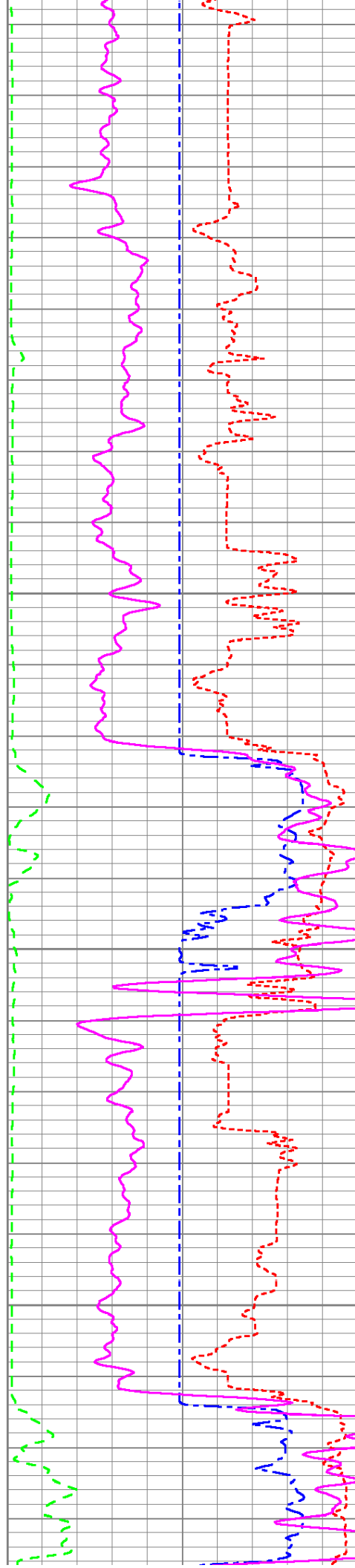


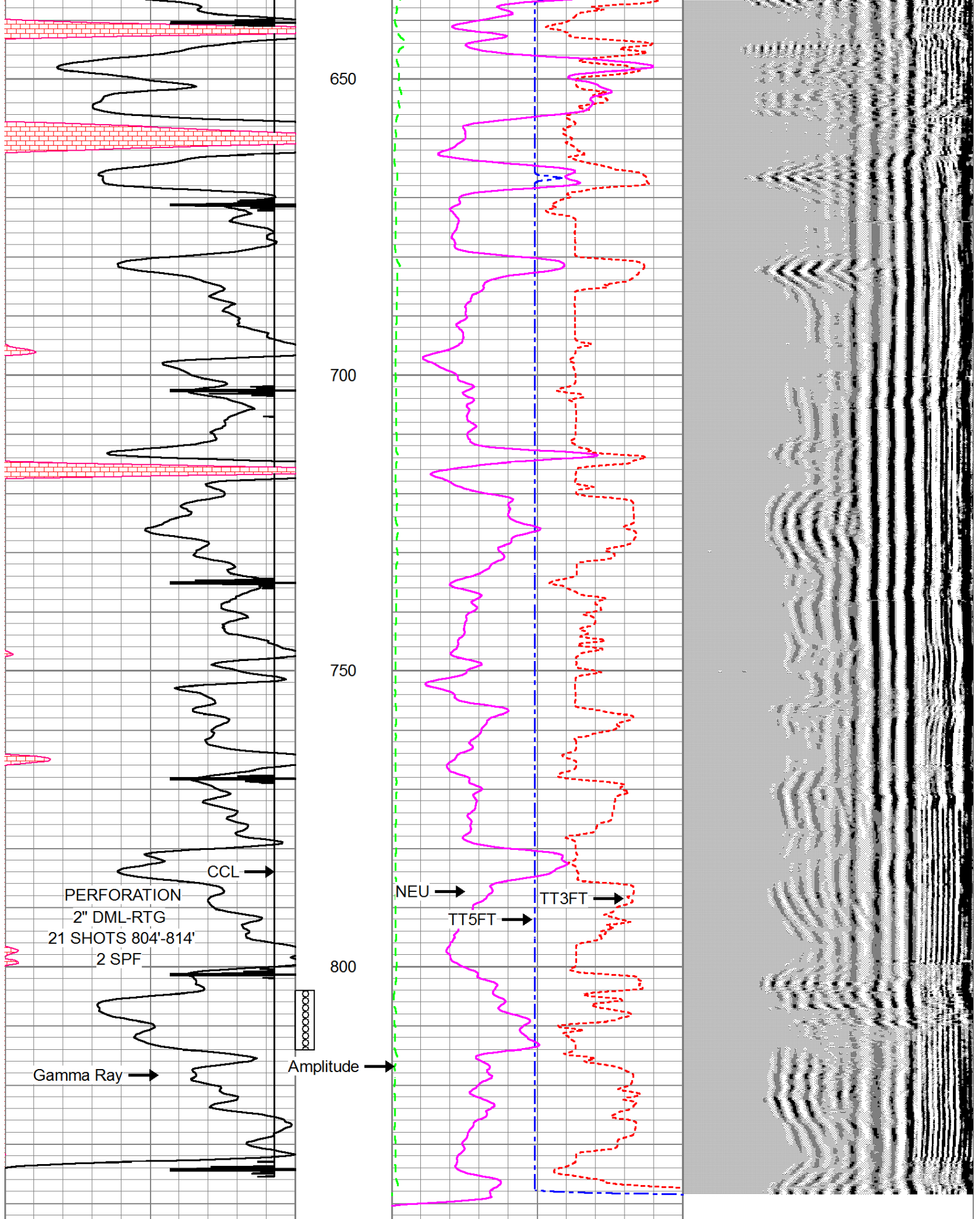
450

500

550

600





0	Gamma Ray	150	0	Amplitude (mV)	150	200	VDL	1200
150	gr	300	1200	TT3FT (usec)	200			
13	CCL	-1	1500	TT5FT (usec)	200			



Company	A X & P, INC.
Well	UNIT 1 #WW 29DE
Field	NEODESHA
County	WILSON SEC. 29 TWP. 30S RGE. 16E
State	KANSAS
Date	7-30-2014