



**MIDWEST SURVEYS**  
 LOGGING - PERFORATING - CONSULTING SERVICES  
 P.O. Box 68, Osawatomie, KS 66064  
 913.735.2128

**GAMMA RAY / NEUTRON / CCL**

File No. Company Ensminger Energy, LLC.  
 Well McFadden No. E-3

Field Moran  
 County Allen State Kansas

Location 5115 FSL & 825 FEL  
 NE-NW-NE-NE

Sec. 12 Twp. 25S Rge. 19E  
 Permanent Datum GL Elevation 1032'  
 Log Measured From GL D.F. NA  
 Drilling Measured From GL G.L. 1032'

Date 05-15-2014  
 Run Number One  
 Depth Driller 890.0  
 Bottom Logged Interval 877.0  
 Top Log Interval 20.0  
 Fluid Level Full

Type Fluid Water  
 Density / Viscosity NA  
 Salinity - PPM Cl NA  
 Max Recorded Temp NA  
 Estimated Cement Top 0.0  
 Equipment No. Location 102 Osawatomie  
 Recorded By Gary Winiadich  
 Witnessed By Dane Kinzey

BORE-HOLE RECORD  
 RUN No. BIT FROM TO SIZE WGT. FROM TO  
 One 9.875" 0.0 7.00" 17.0 # 0.0 20.0  
 Two 5.875" 20.0 890.0 2.875" 6.5 # 0.0 870.0

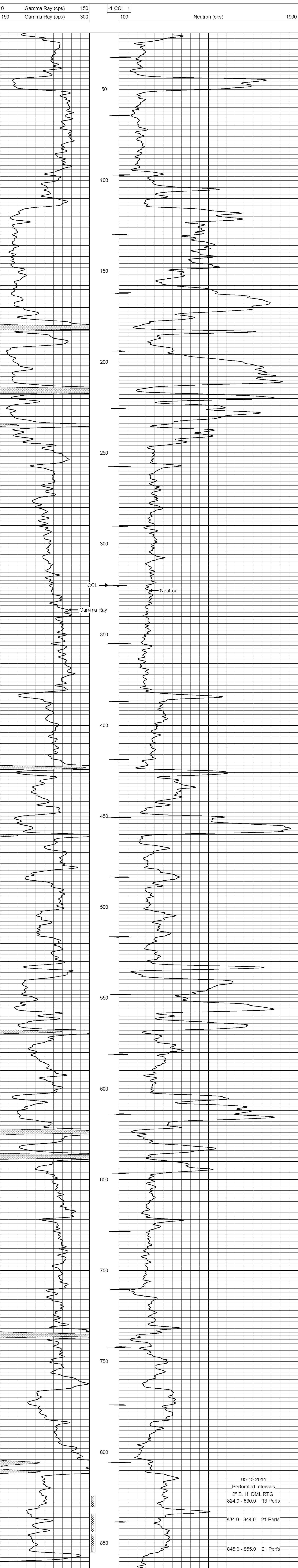
<<< Fold Here >>>

All interpretations are opinions based on inferences from electrical or other measurements and we cannot and do not guarantee the accuracy or correctness of any interpretation, and we shall not, except in the case of gross or willful negligence on our part, be liable or responsible for any loss, costs, damages, or expenses incurred or sustained by anyone resulting from any interpretation made by any of our officers, agents or employees. These interpretations are also subject to our general terms and conditions set out in our current Price Schedule.

Comments

Drilling Contractor :  
 EK Energy, LLC.

Database File: mcfadden3e.db  
 Dataset Pathname: pass1  
 Presentation Format: gr-n-ccl  
 Dataset Creation: Thu May 15 11:11:24 2014 by Log SCH 111116  
 Charted by: Depth in Feet scaled 1:240



0 Gamma Ray (cps) 150  
 150 Gamma Ray (cps) 300  
 -1 CCL 1  
 100 Neutron (cps) 1900