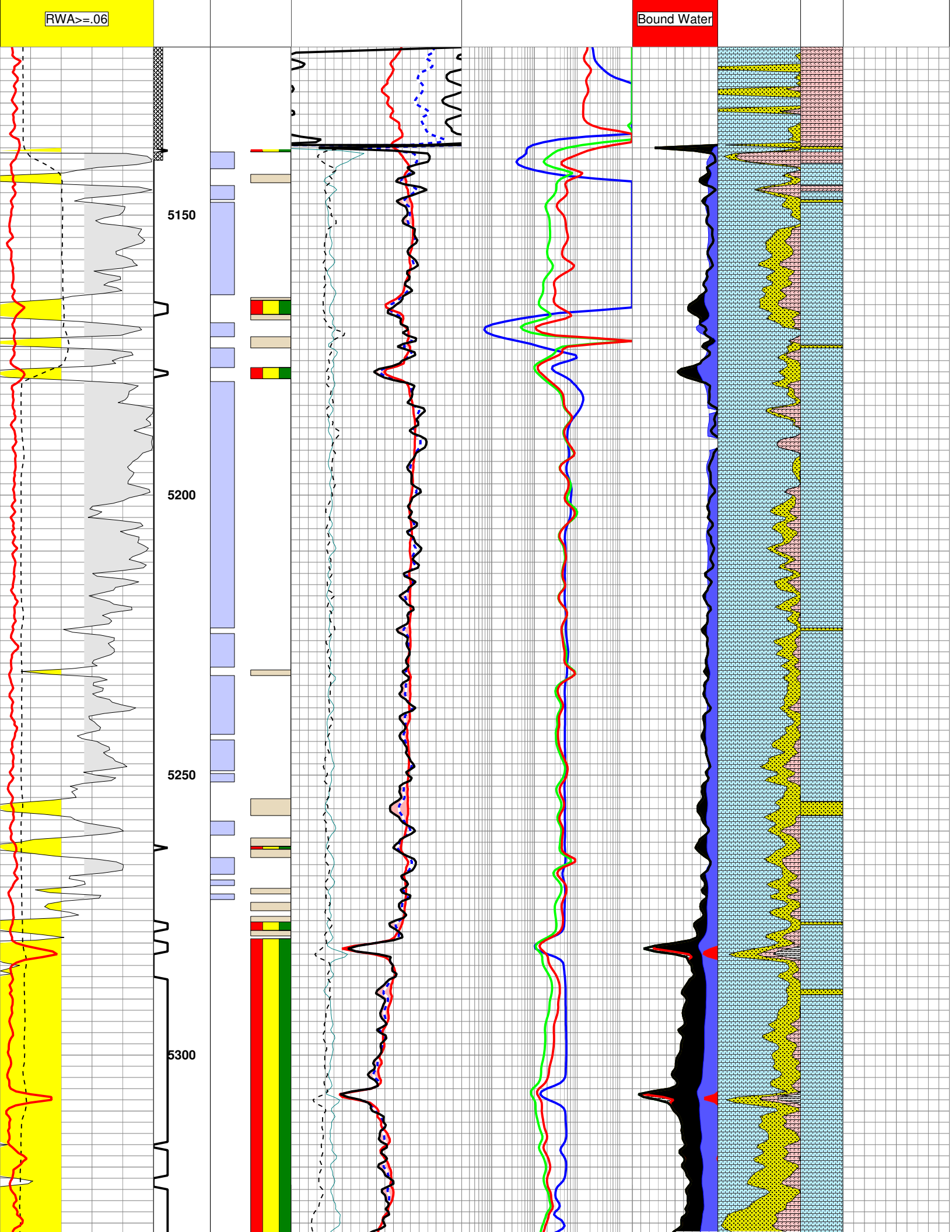
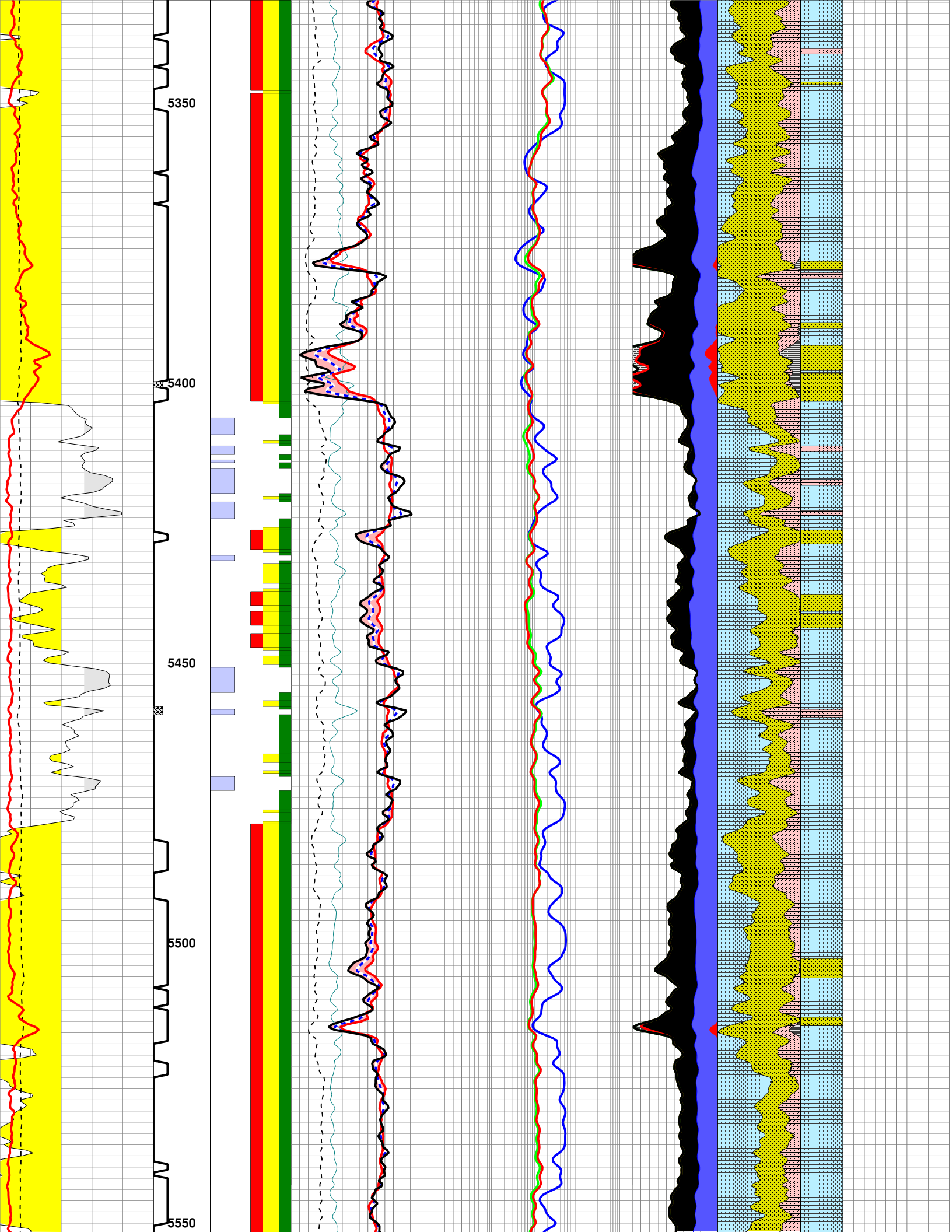
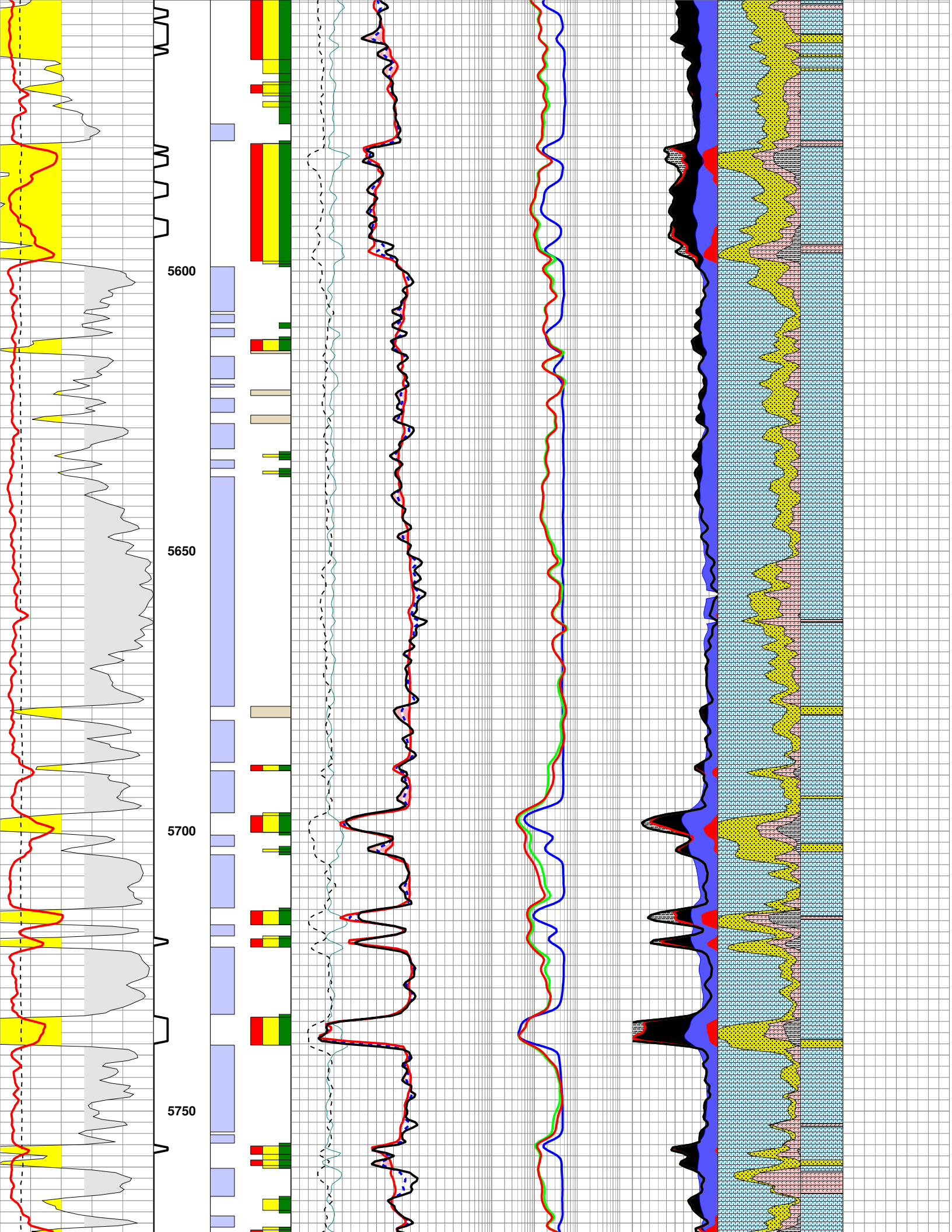


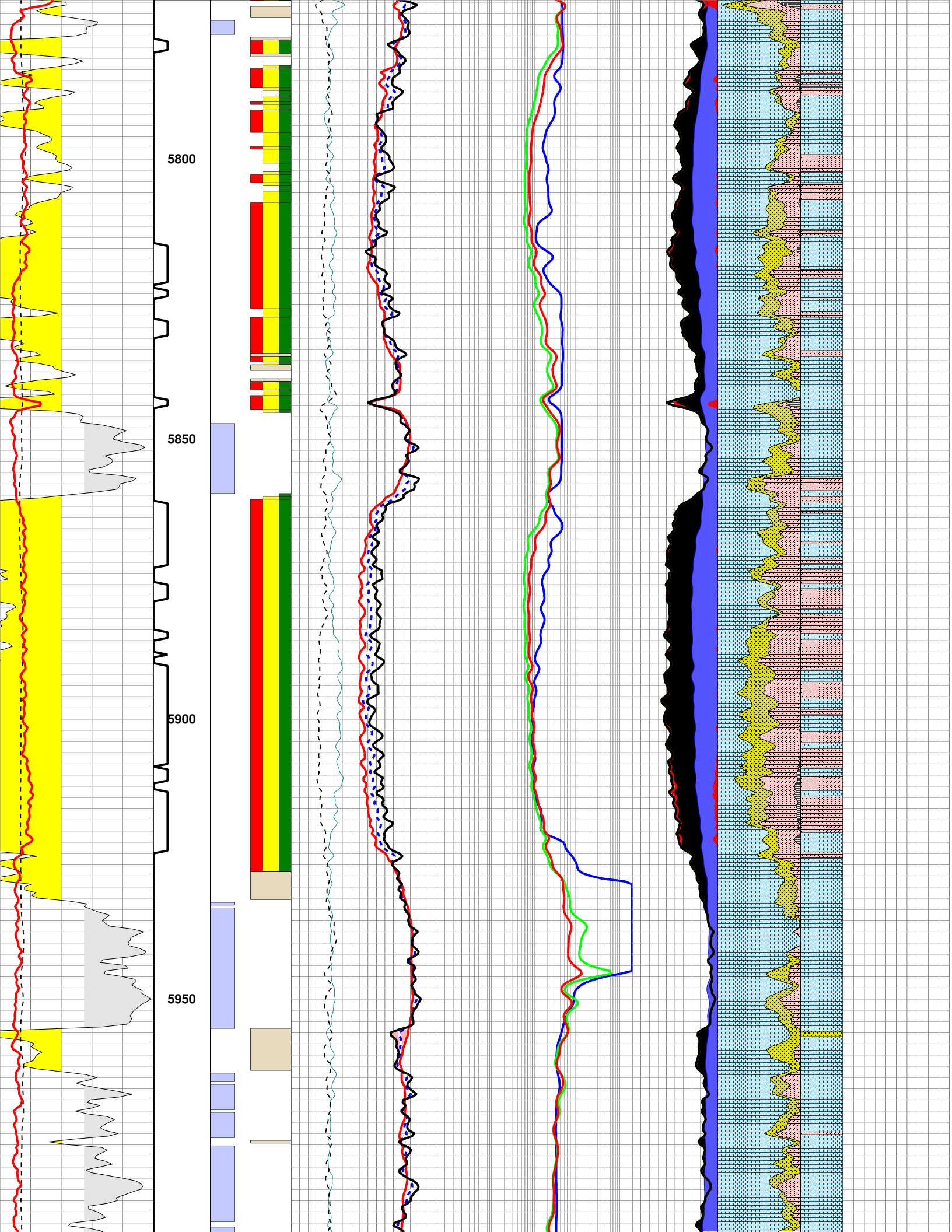
RWA>=.06

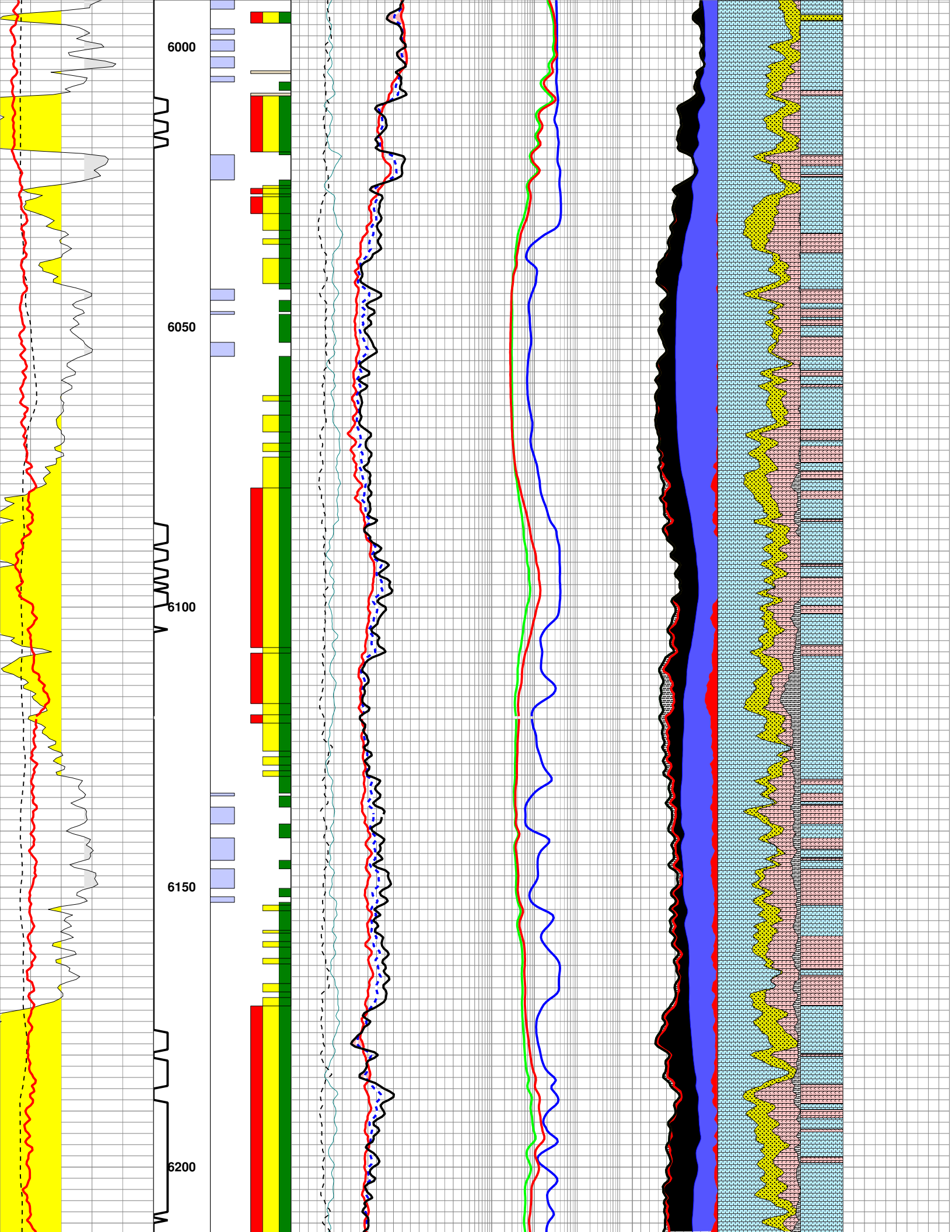
Bound Water

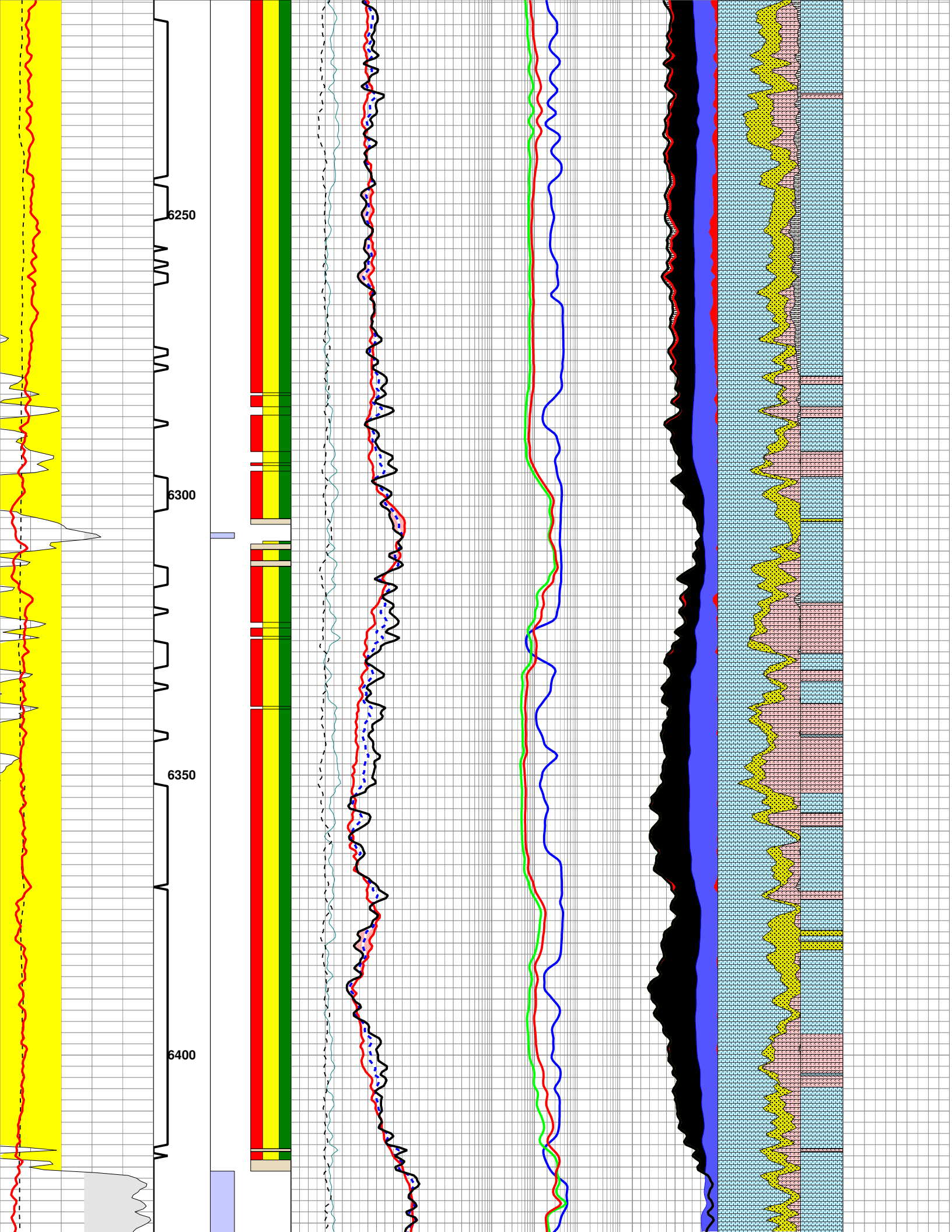


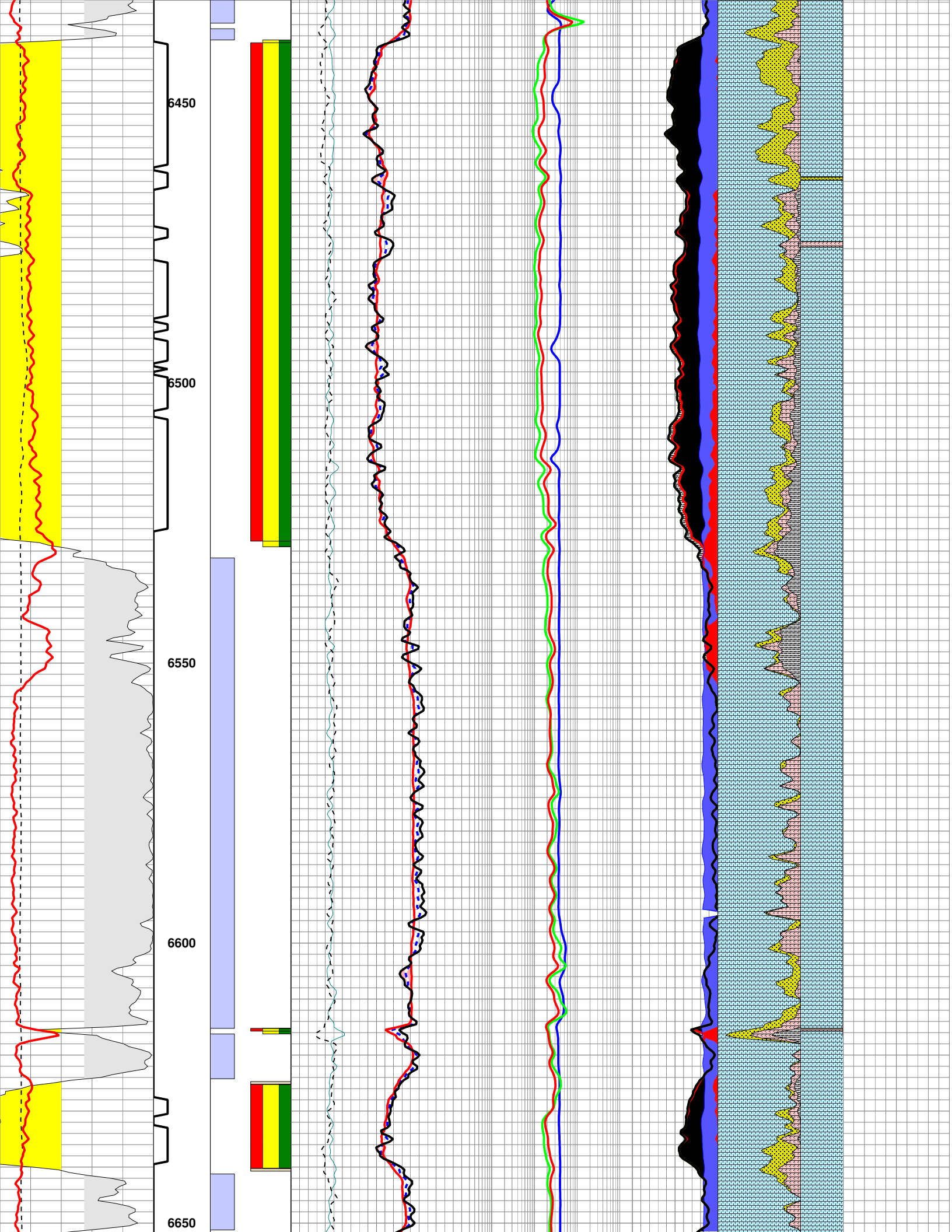


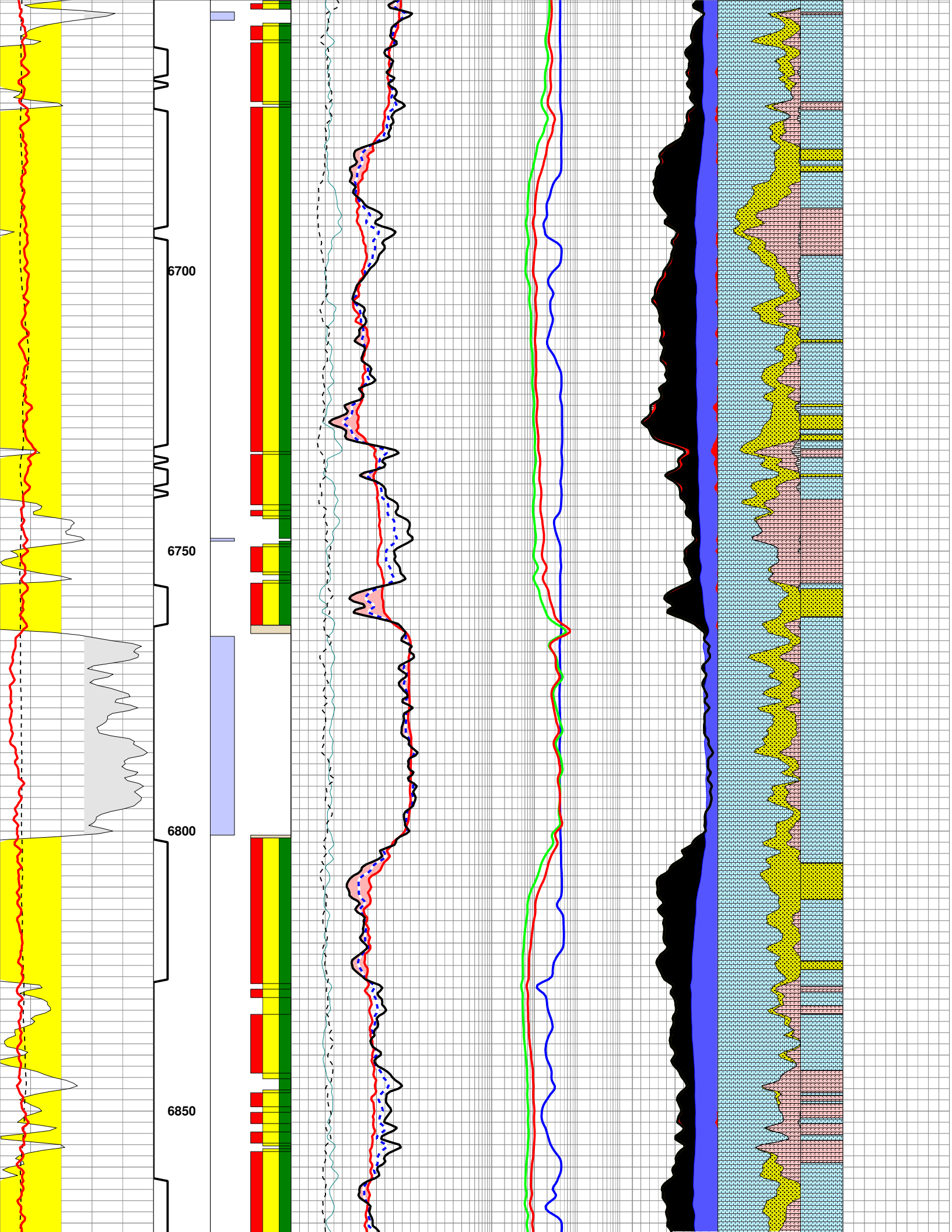


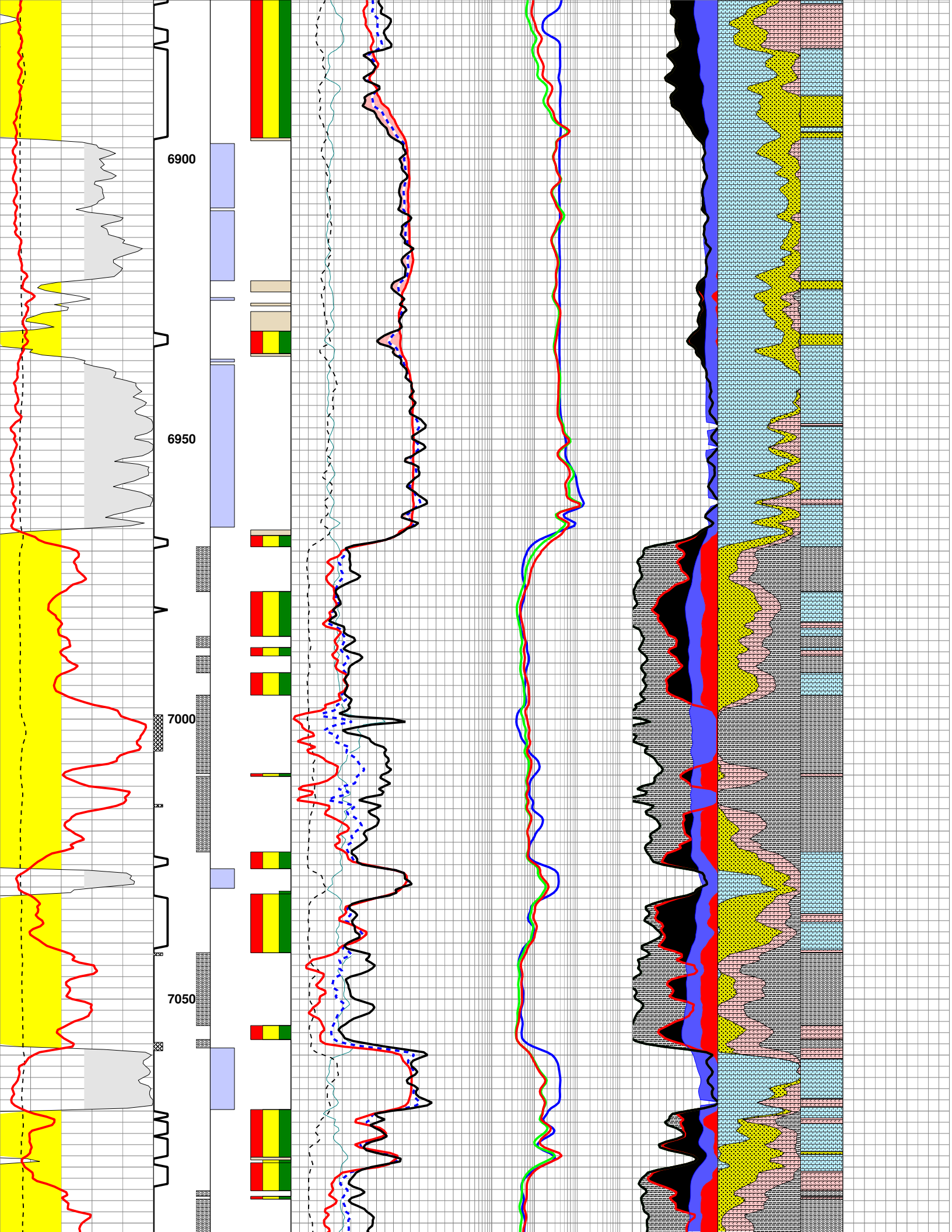


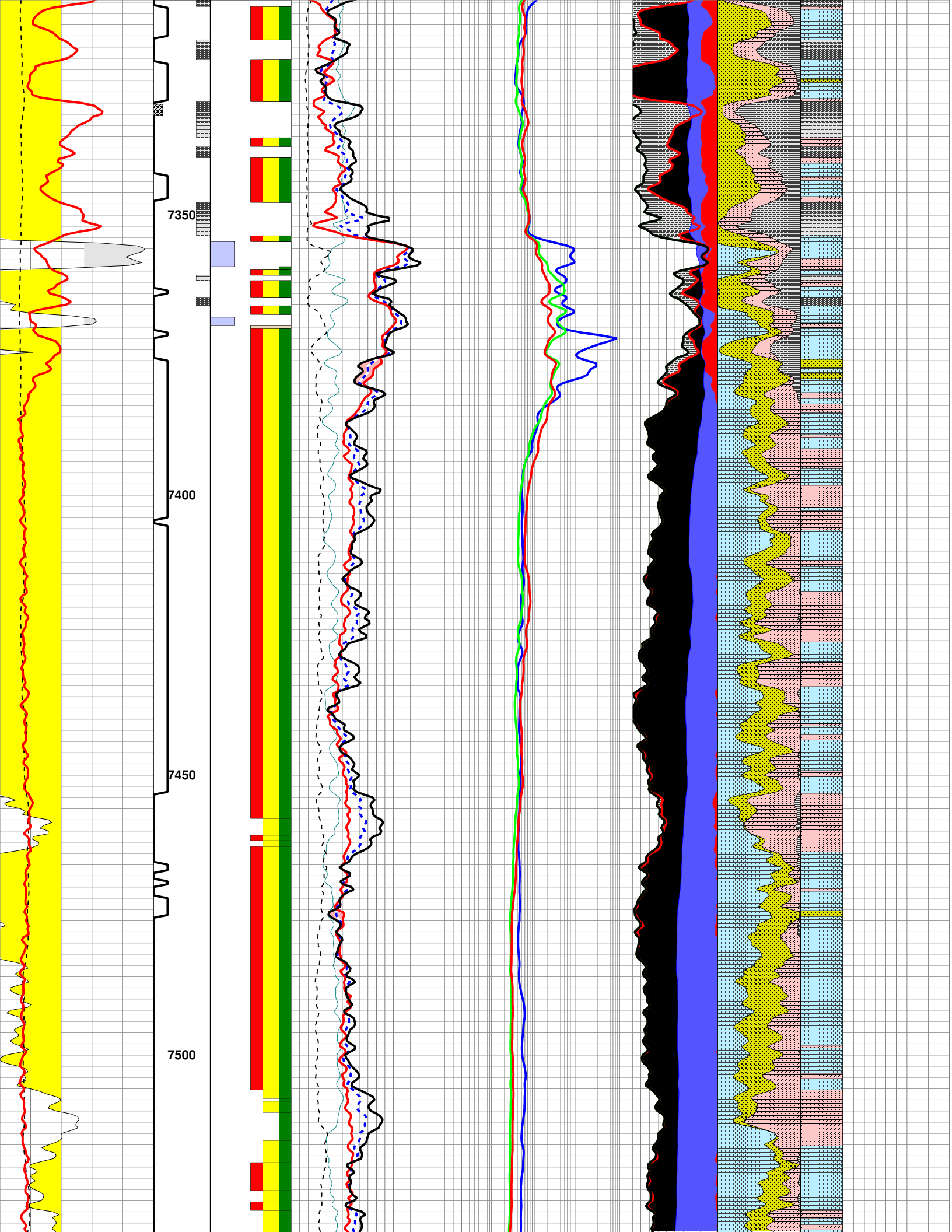


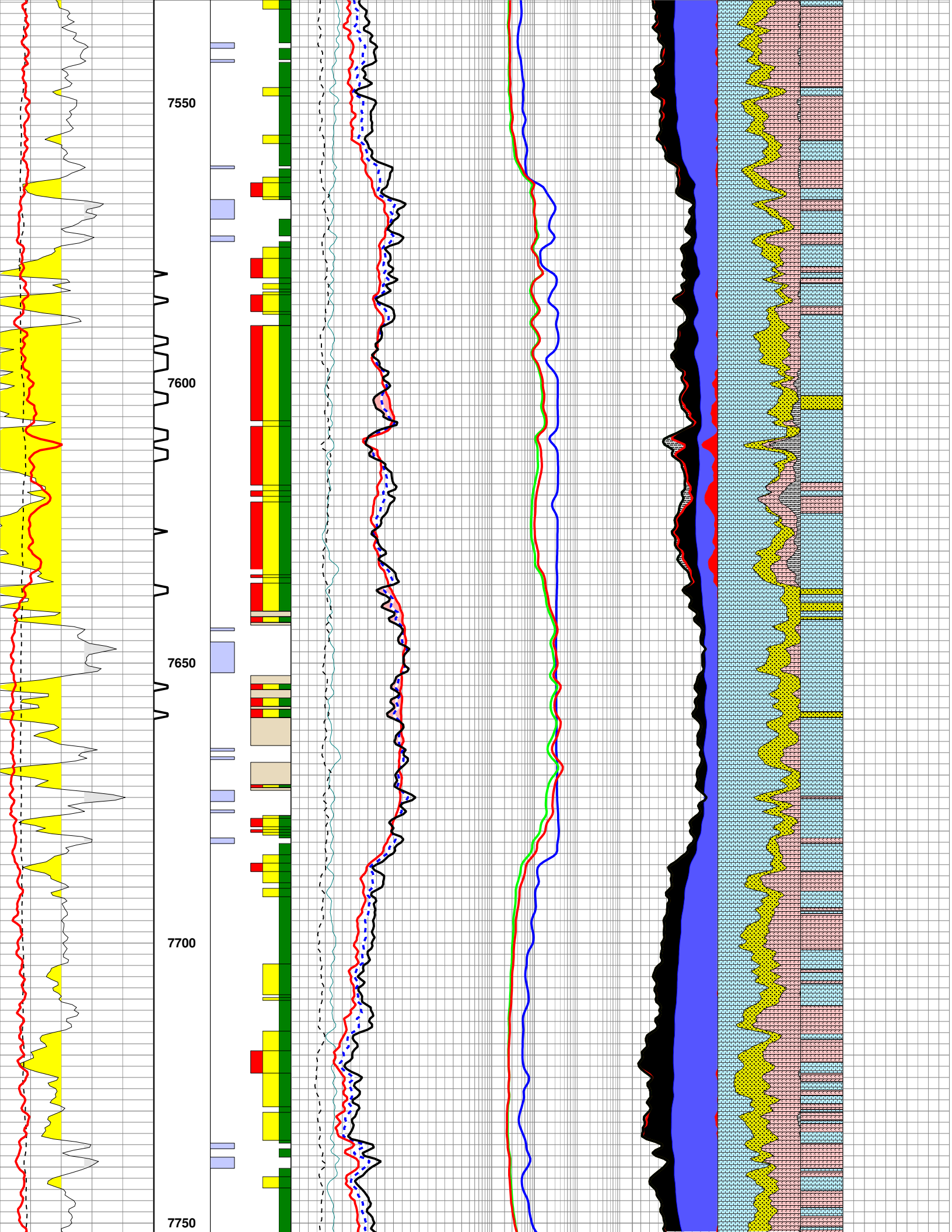


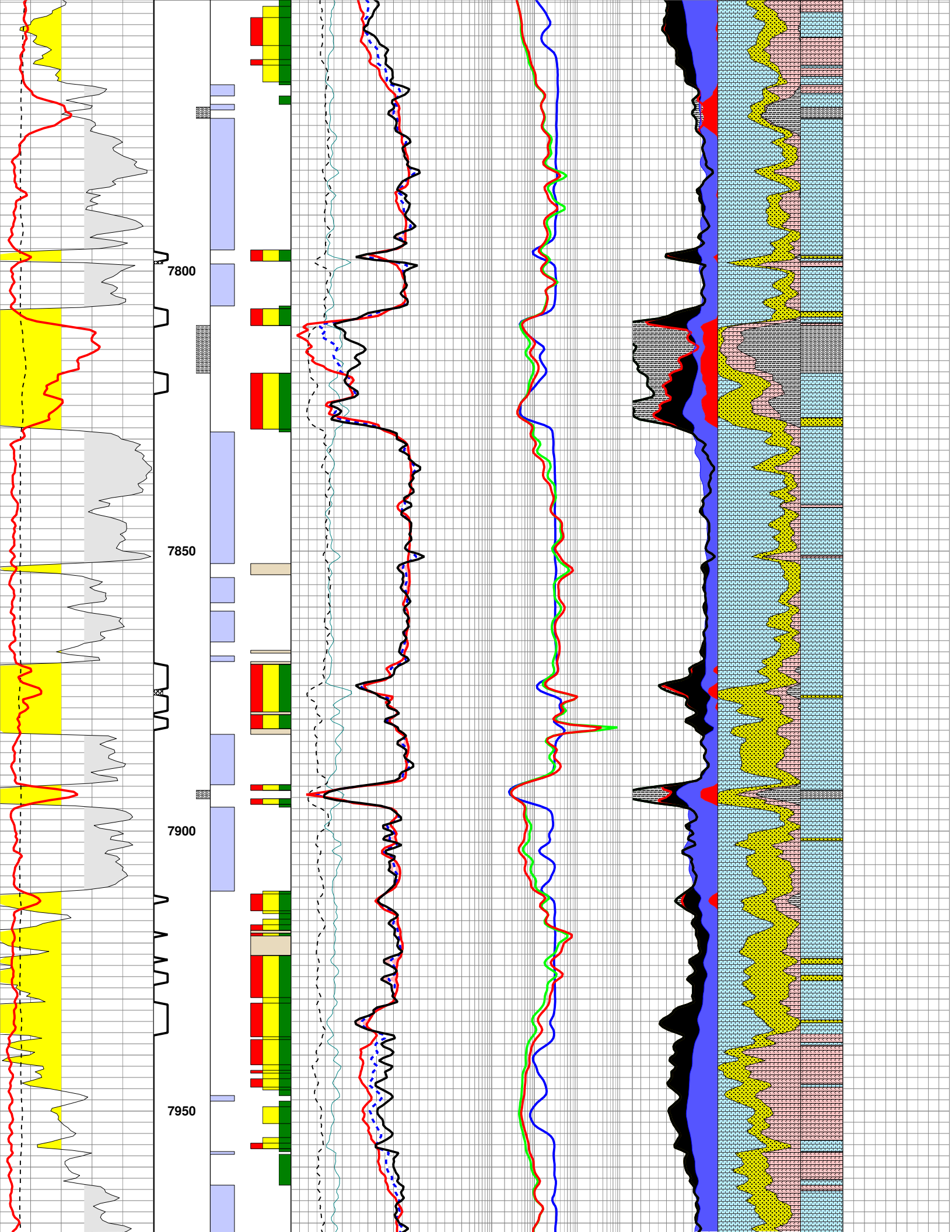


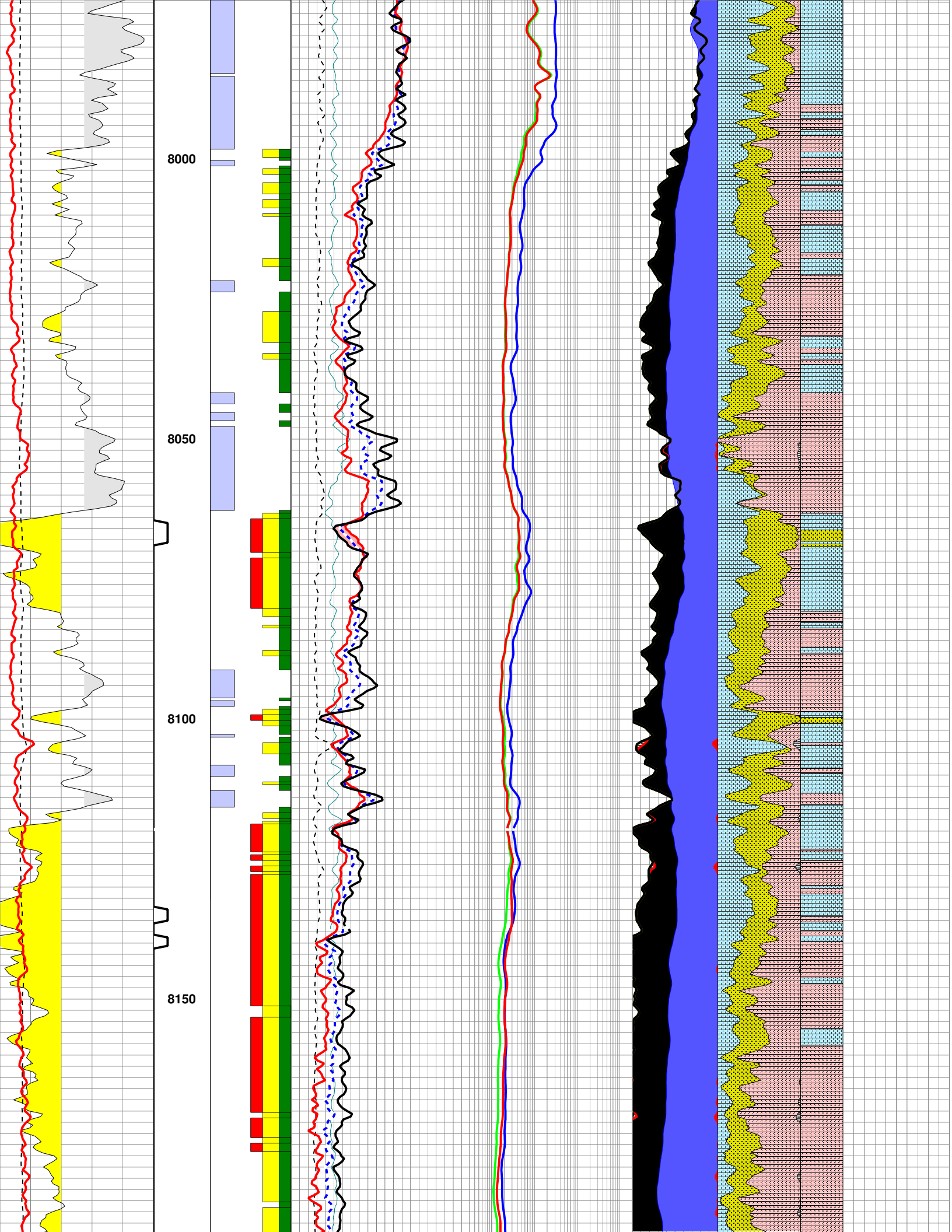


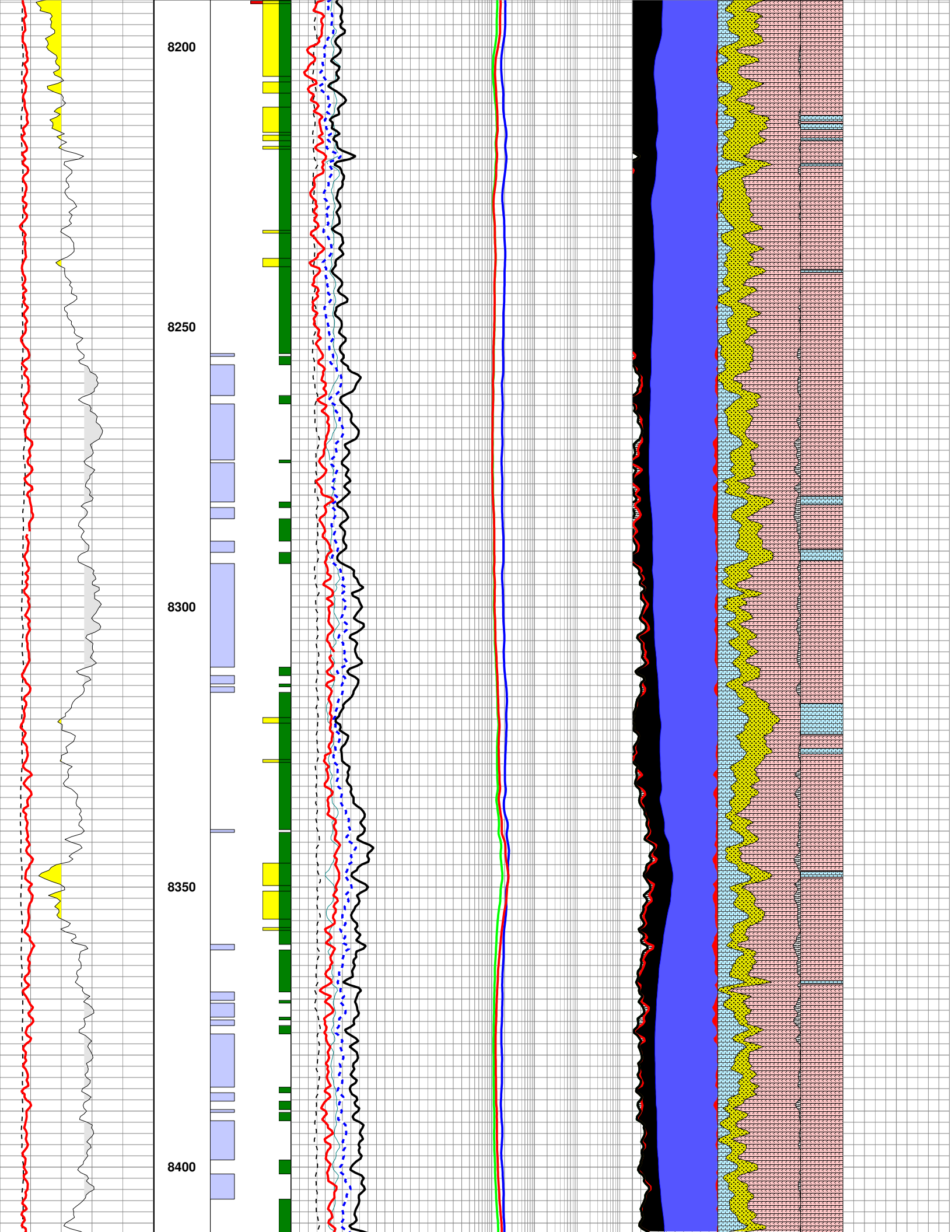


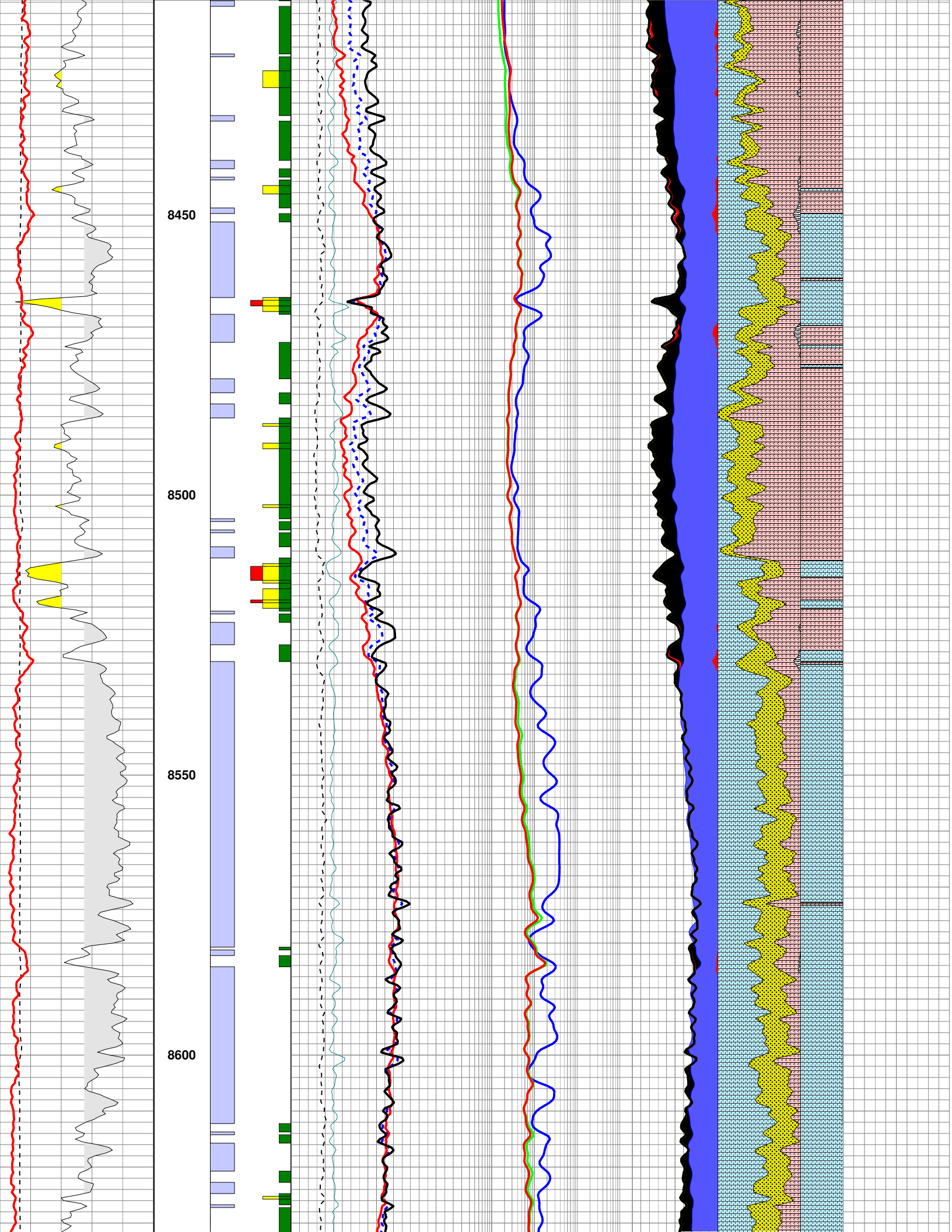


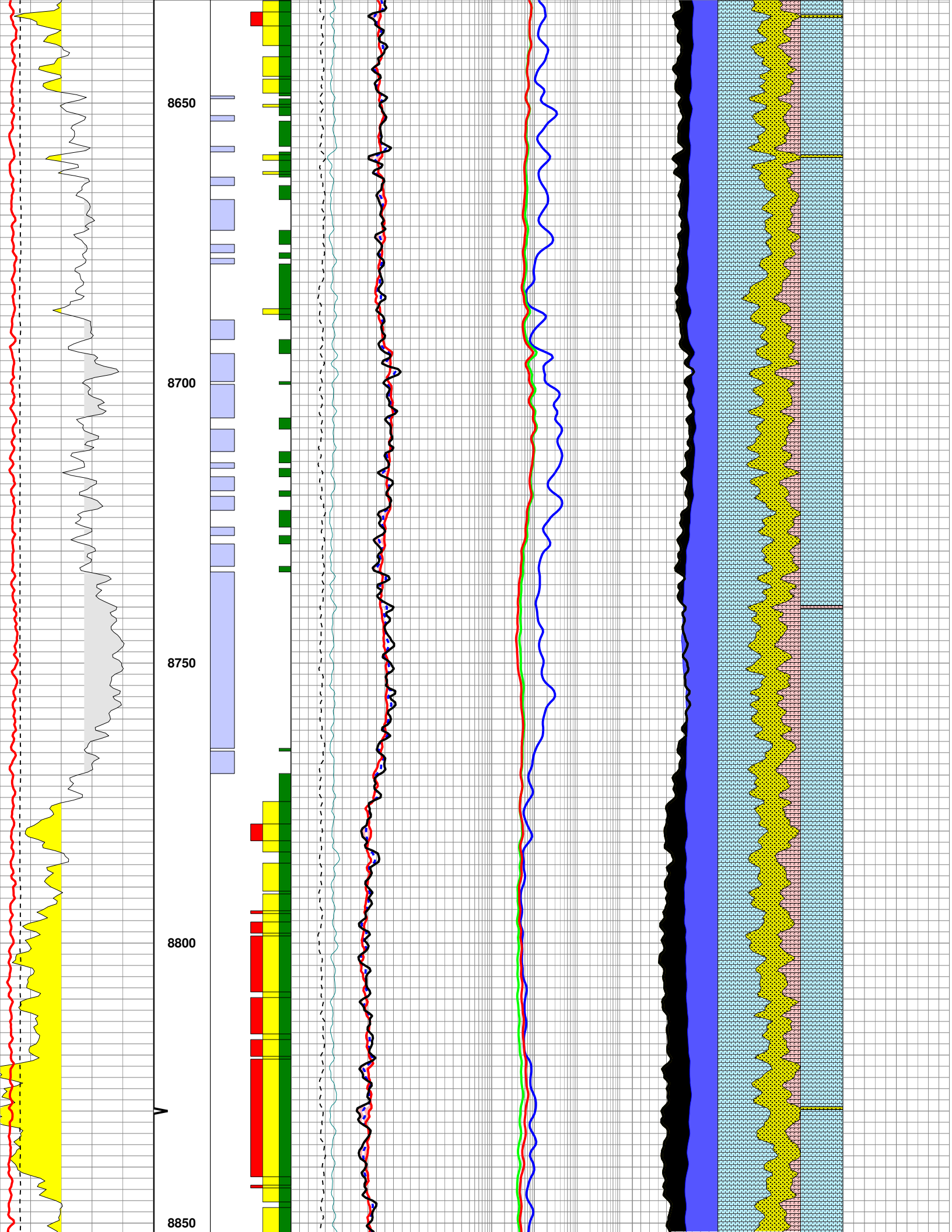


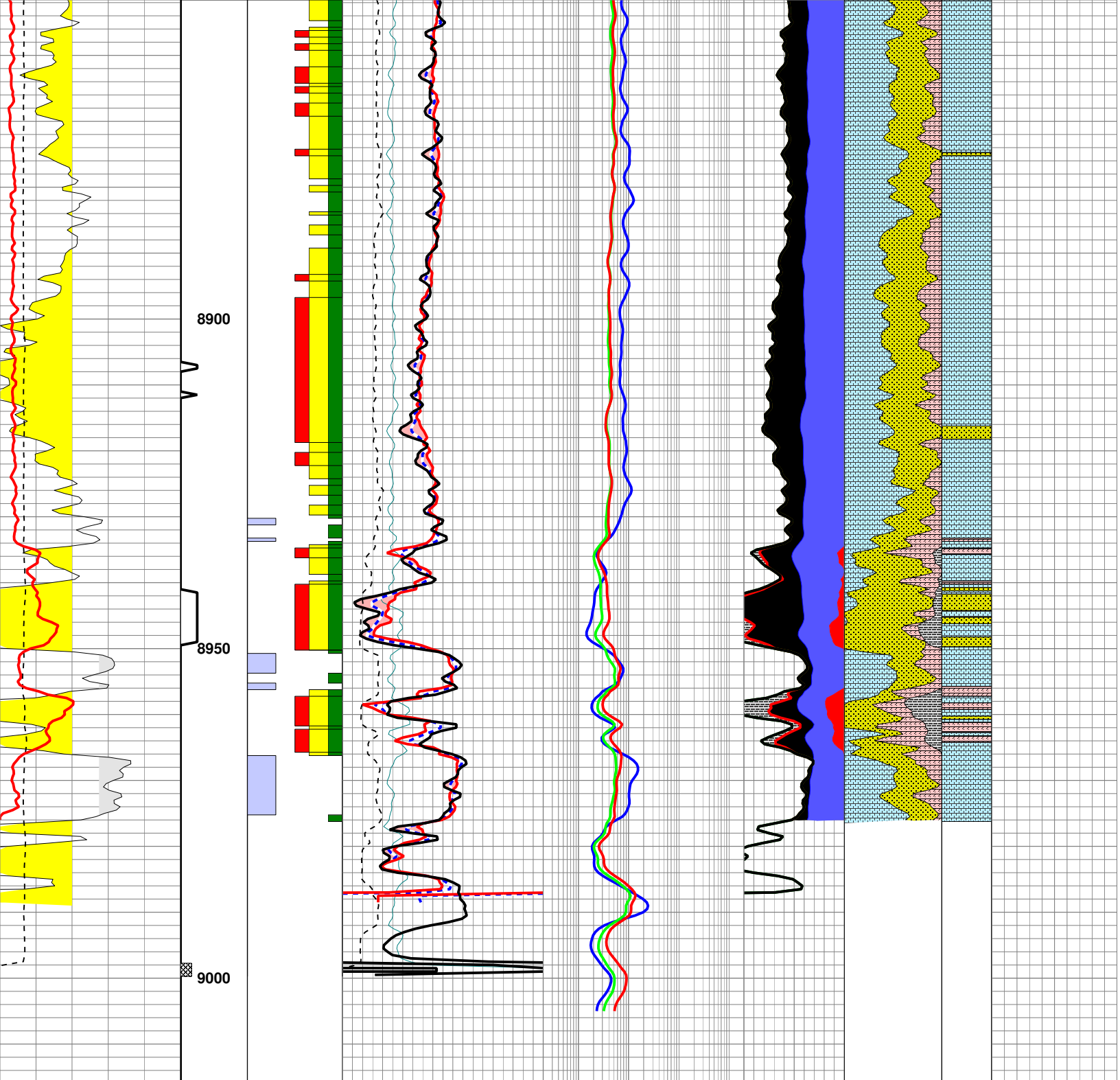












Correlation	Depth	RWA Flags	Open-Hole Porosity	Open-Hole Resistivity	Pore Space	Lithology	NT-LITH	Mudlog Data
CGR(N/A)	MD	$\geq .075$	PHID	ResD(90IN_2FT_R)	PHIT	Sandstone	Sandstone	C1(N/A)
GR	BHF	$\geq .06$	PHIN	ResM(30IN_2FT_R)	PHIA	Limestone	Limestone	C2(N/A)
GAPI	Vshl > .4	$\geq .045$	SXP	ResS(10IN_2FT_R)	BVW	Dolomite	Dolomite	C3(N/A)
GRPO(N/A)			PEF		PHIE	Clay	Shale	C4(N/A)
GRTH(N/A)		< .045	BARN		BVWb			OIL_CURVE
GRUR(N/A)		Tight Pay	DRHO					
			G/CC					

CALI(DCAL)		
5	IN	15
RWA_SXP		
0.1		0.0
RWA<.045		
RWA>=.06		

Crossover

Hydrocarbon
Clay Water
Bound Water

ROP2	
150	0