



Pioneer Energy Services

Dual Induction Log

15-007-24,136-00-00

API No.

Company N-10 Exploration, LLC

Well Medicine River Ranch 'E' #3

Field Landis

County Barber State

Kansas

Location SW/NW/SE
1650' FSL & 2310' FEL

Other Services
CNL/CDL

Sec: 22 Twp: 34S Rge: 11W

Permanent Datum Ground Level Elevation 1325
Log Measured From Kelly Bushing 10 Ft. Above Perm. Datum
Drilling Measured From Kelly Bushing

Elevation
K.B. 1335
D.F. 1325
G.L. 1325

Date	3/5/2014	
Run Number	One	
Depth Driller	4986	
Depth Logger	4985	
Bottom Logged Interval	4984	
Top Log Interval	550	
Casing Driller	8.625 @ 550	
Casing Logger	549	
Bit Size	7.875	
Type Fluid in Hole	Chemical	
Salinity, ppm CL	2,500	
Density / Viscosity	9.3 50	
pH / Fluid Loss	10.5 9.2	
Source of Sample	Flowline	
Rm @ Meas. Temp	.65 @ 52	
Rmf @ Meas. Temp	.49 @ 52	
Rmc @ Meas. Temp	.88 @ 52	
Source of Rmf / Rmc	Charts	
Rm @ BHT	.27 @ 126	
Operating Rig Time	3 Hours	
Max Rec. Temp. F	126	
Equipment Number	17	
Location	Hays	
Recorded By	C. Desai	
Witnessed By	Tim Pierce	

<<< Fold Here >>>

All interpretations are opinions based on inferences from electrical or other measurements and we cannot and do not guarantee the accuracy or correctness of any interpretation, and we shall not, except in the case of gross or willful negligence on our part, be liable or responsible for any loss, costs, damages, or expenses incurred or sustained by anyone resulting from any interpretation made by any of our officers, agents or employees. These interpretations are also subject to our general terms and conditions set out in our current Price Schedule.

Comments

Thank you for using Pioneer Energy Services
www.pioneer.com
785 625 3858

Medicine Lodge KS, S to Gerlane Rd,
E to Bethel Rd, 3 1/2 S to Angus Rd, 1 W, S Into

Database File: c:\warrior\data\n-10_medicine river ranch 'e' #3\n10hd.db
Dataset Pathname: dil\n10stk
Presentation Format: dil2in
Dataset Creation: Wed Mar 05 14:10:15 2014
Charted by: Depth in Feet scaled 1:600

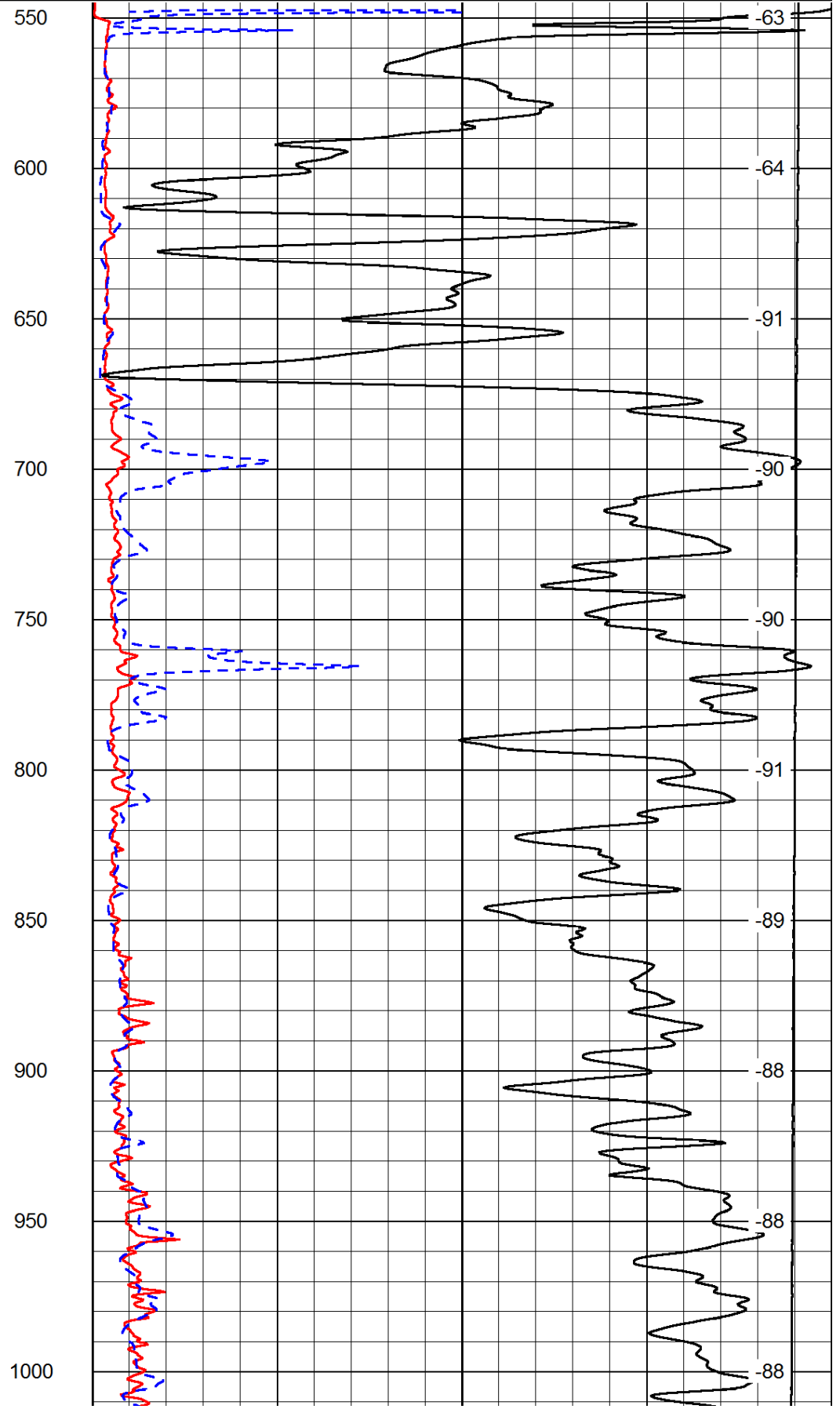
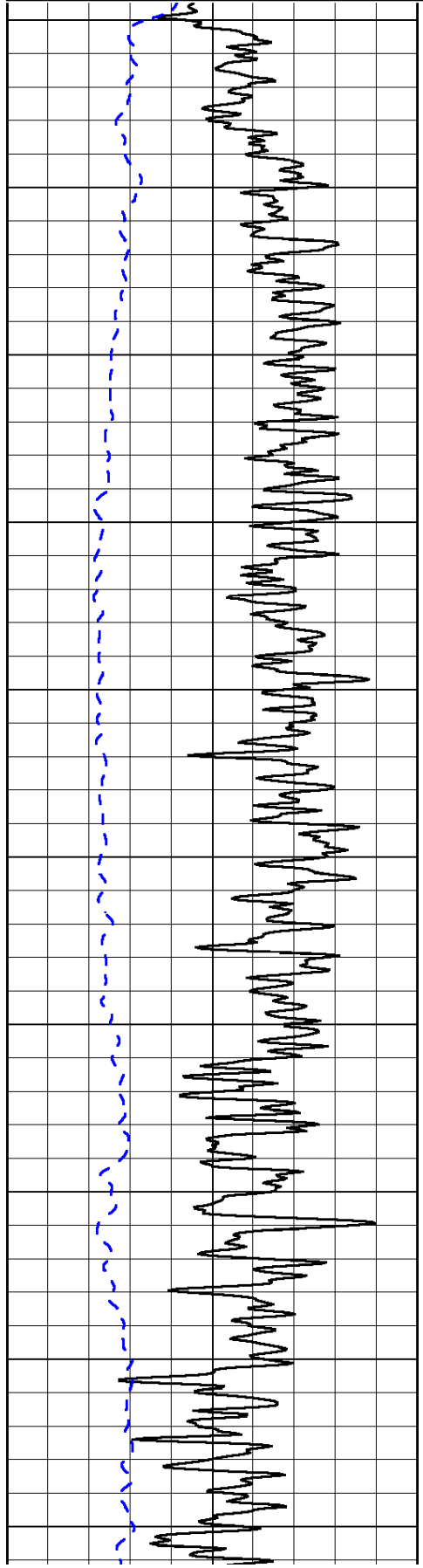
0	Gamma Ray	150
-200	SP (mV)	0

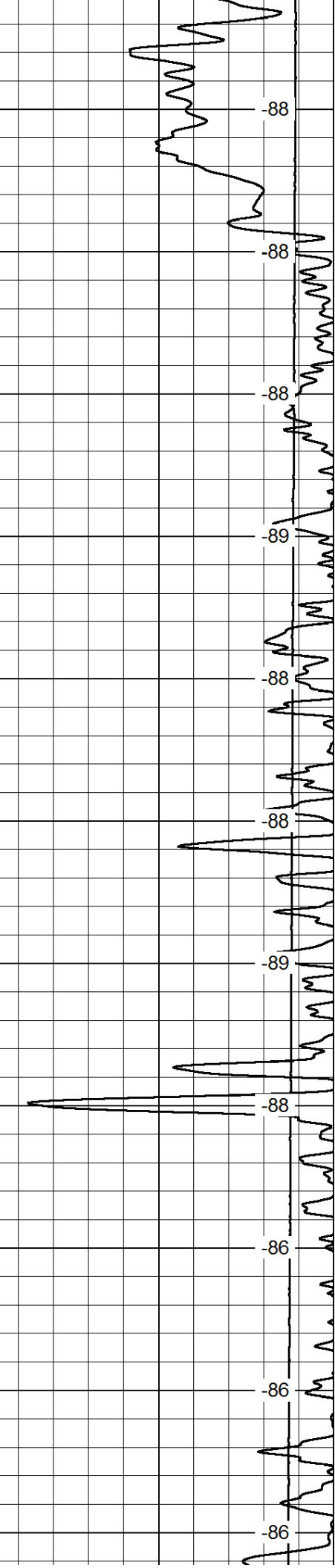
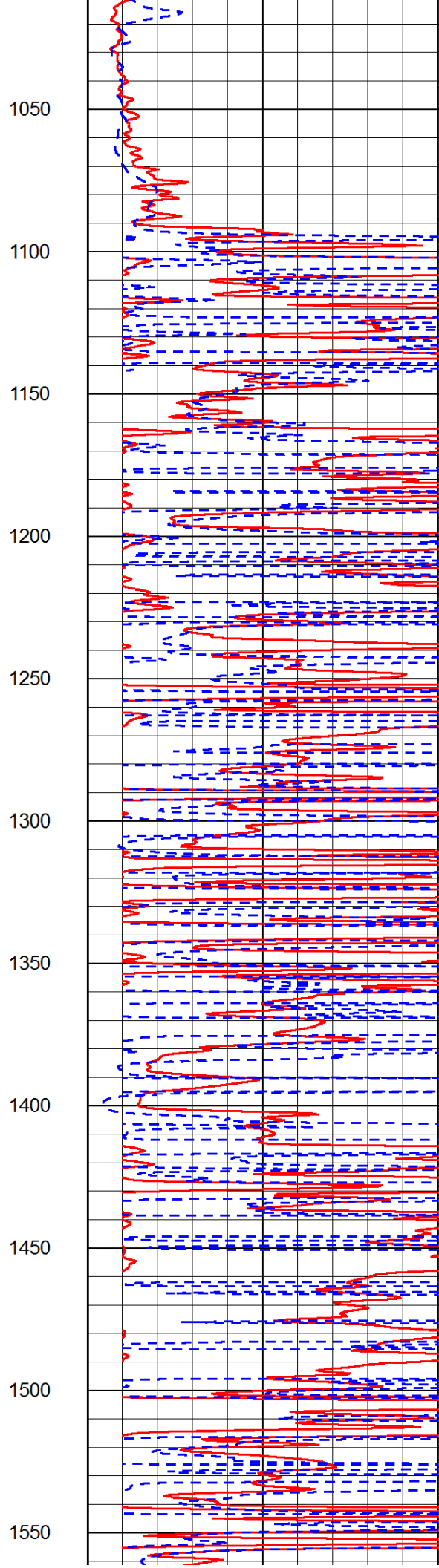
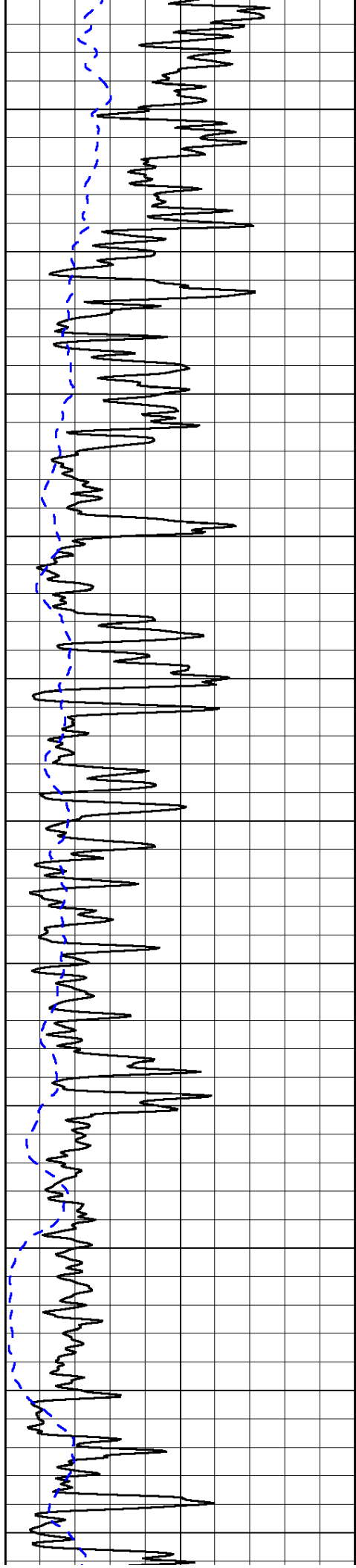
0	Shallow Resistivity	50
0	Deep Resistivity	50

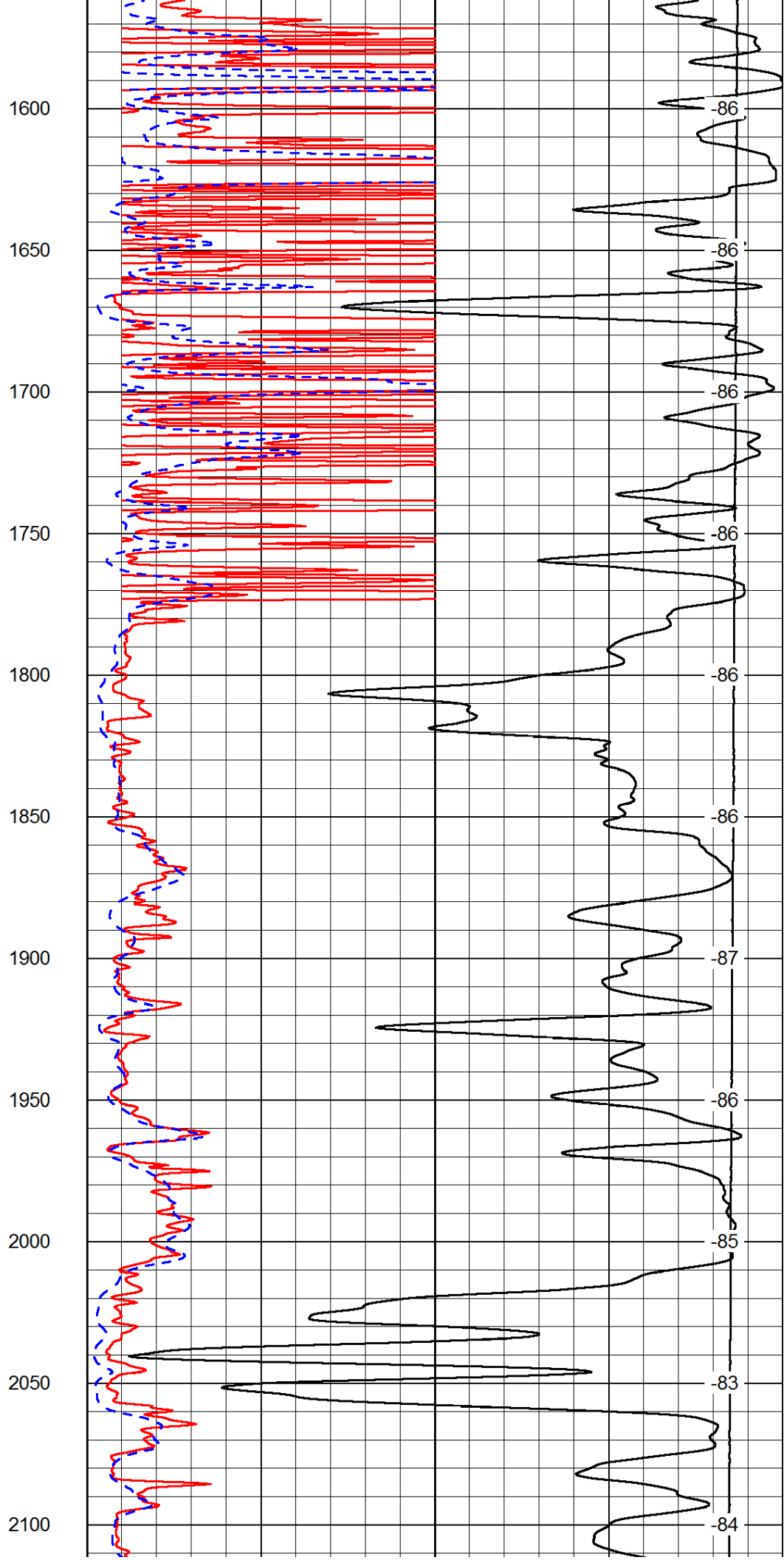
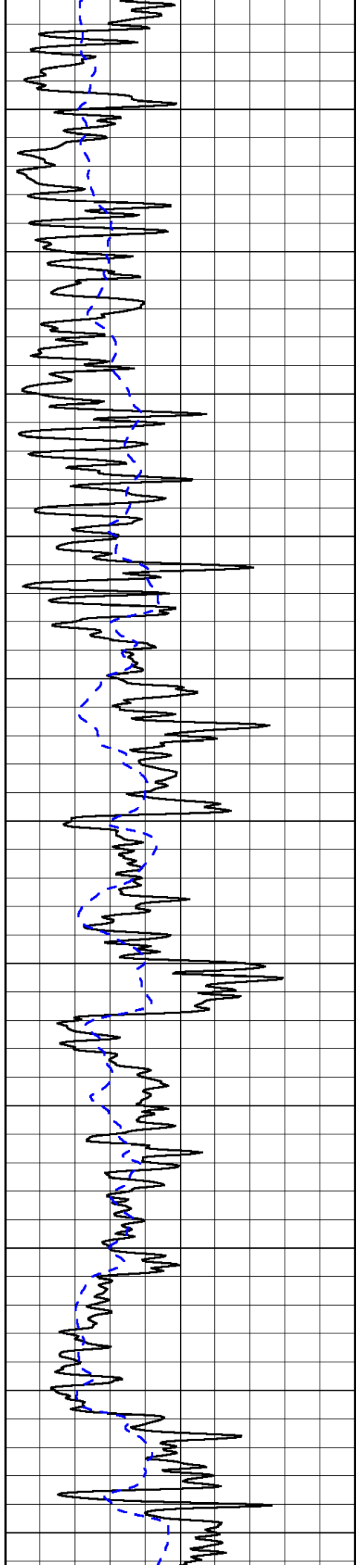
LSPD

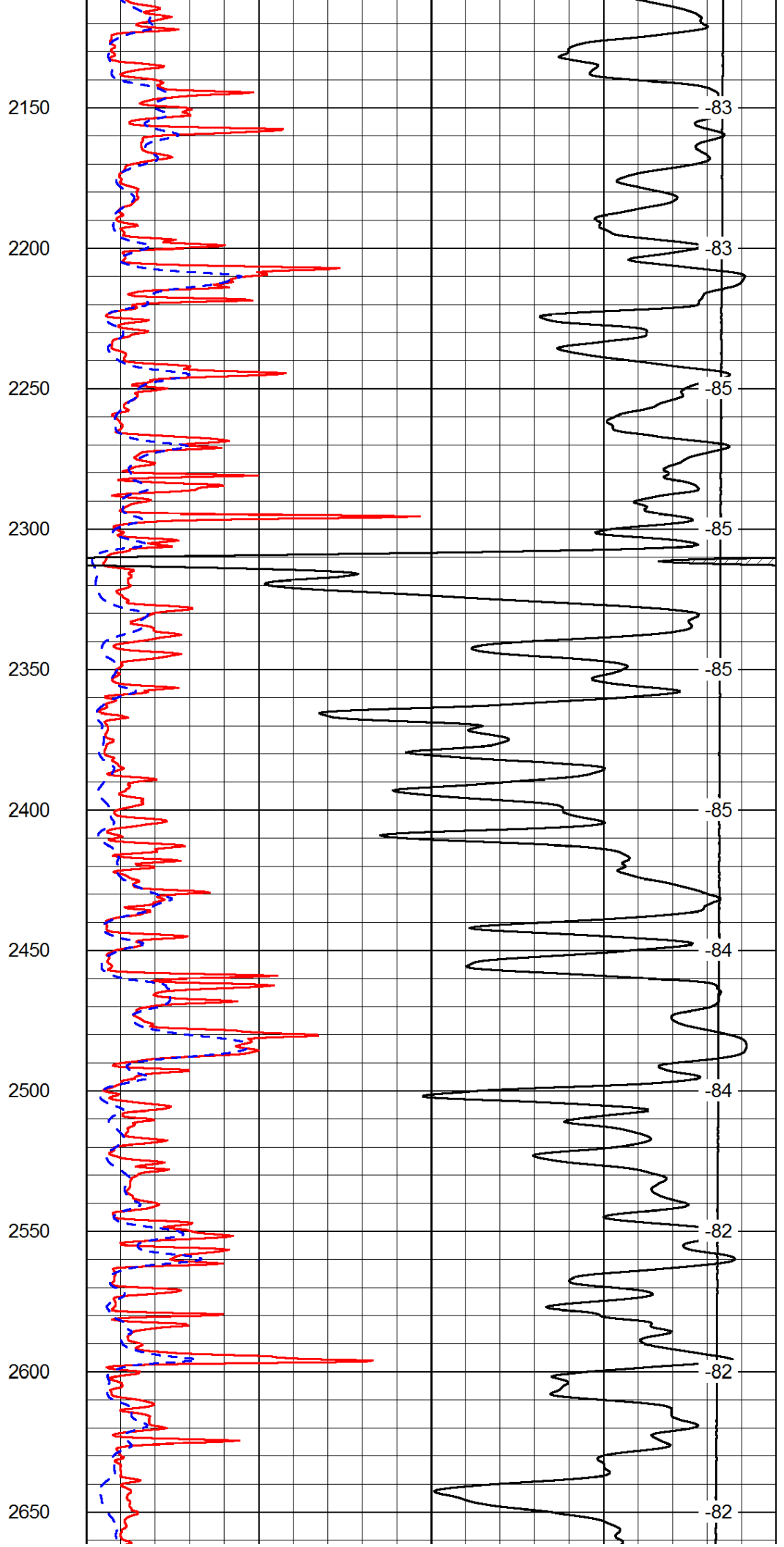
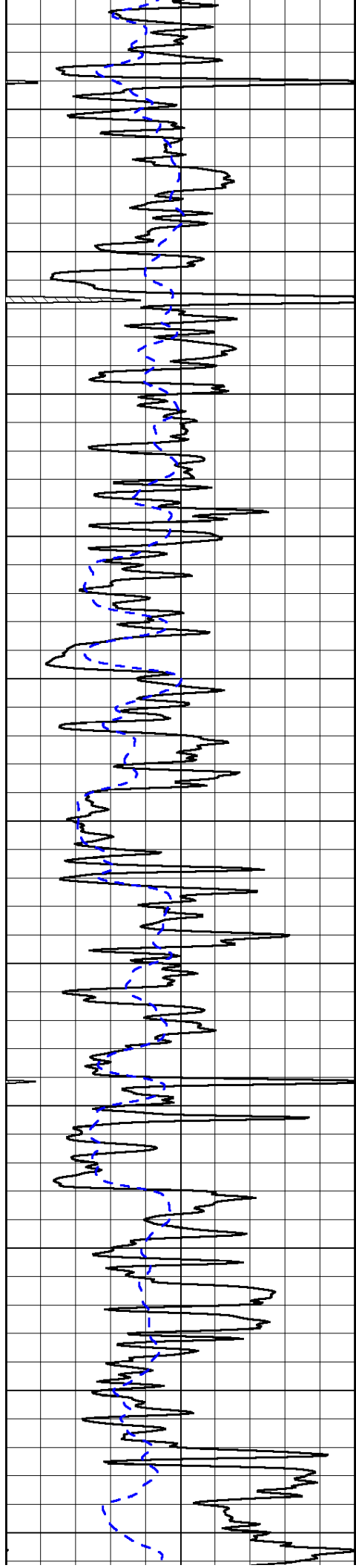
1000	Conductivity	0
15000	Line Tension	0

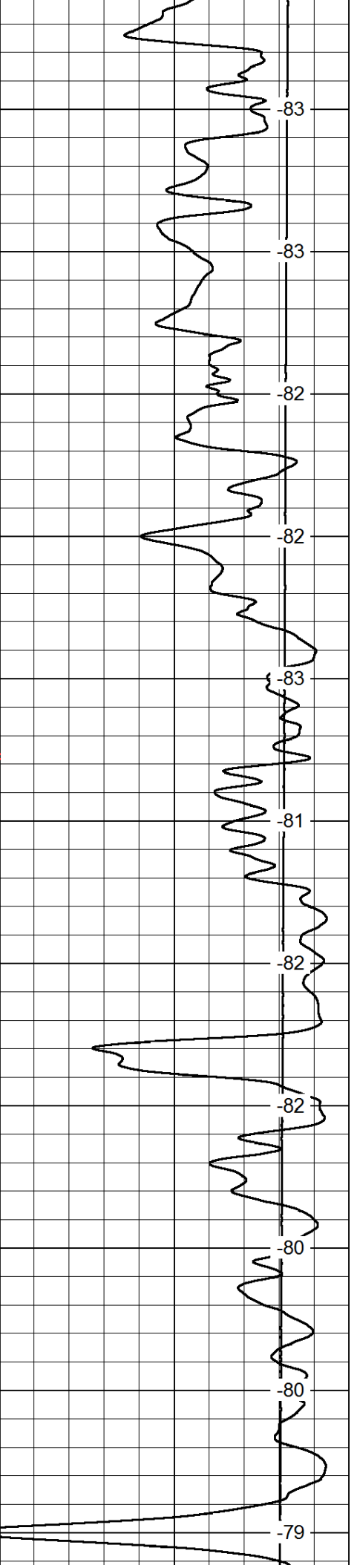
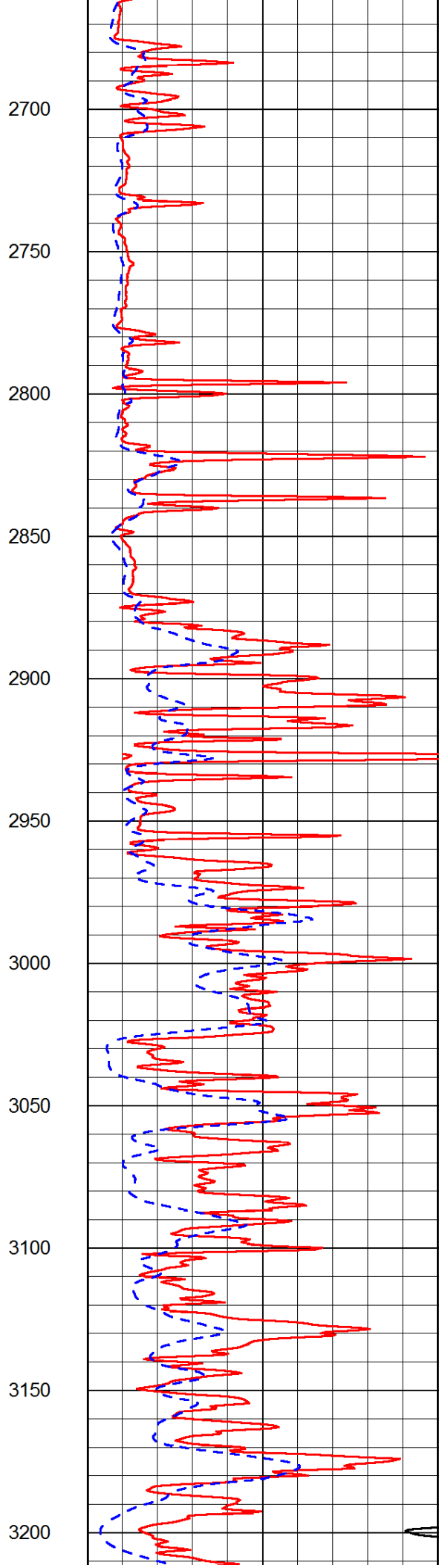
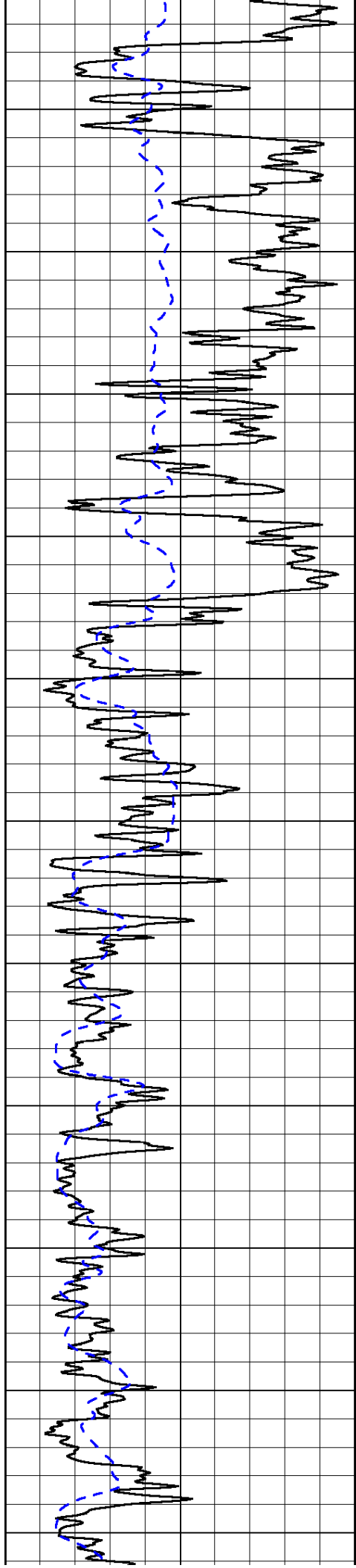
50	Shallow Resistivity	500
50	Deep Resistivity	500

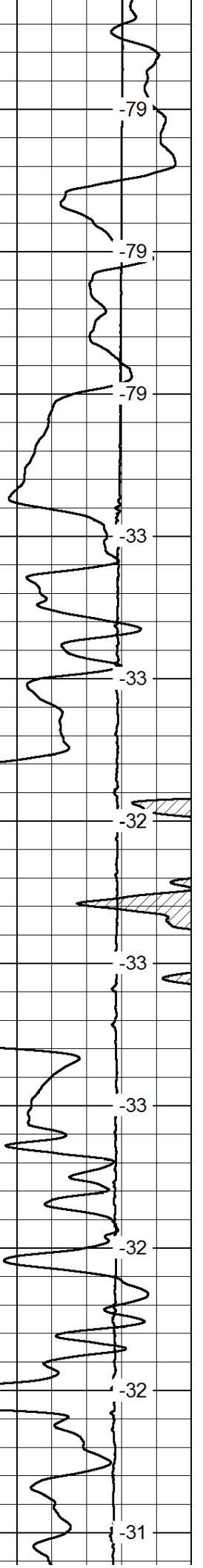
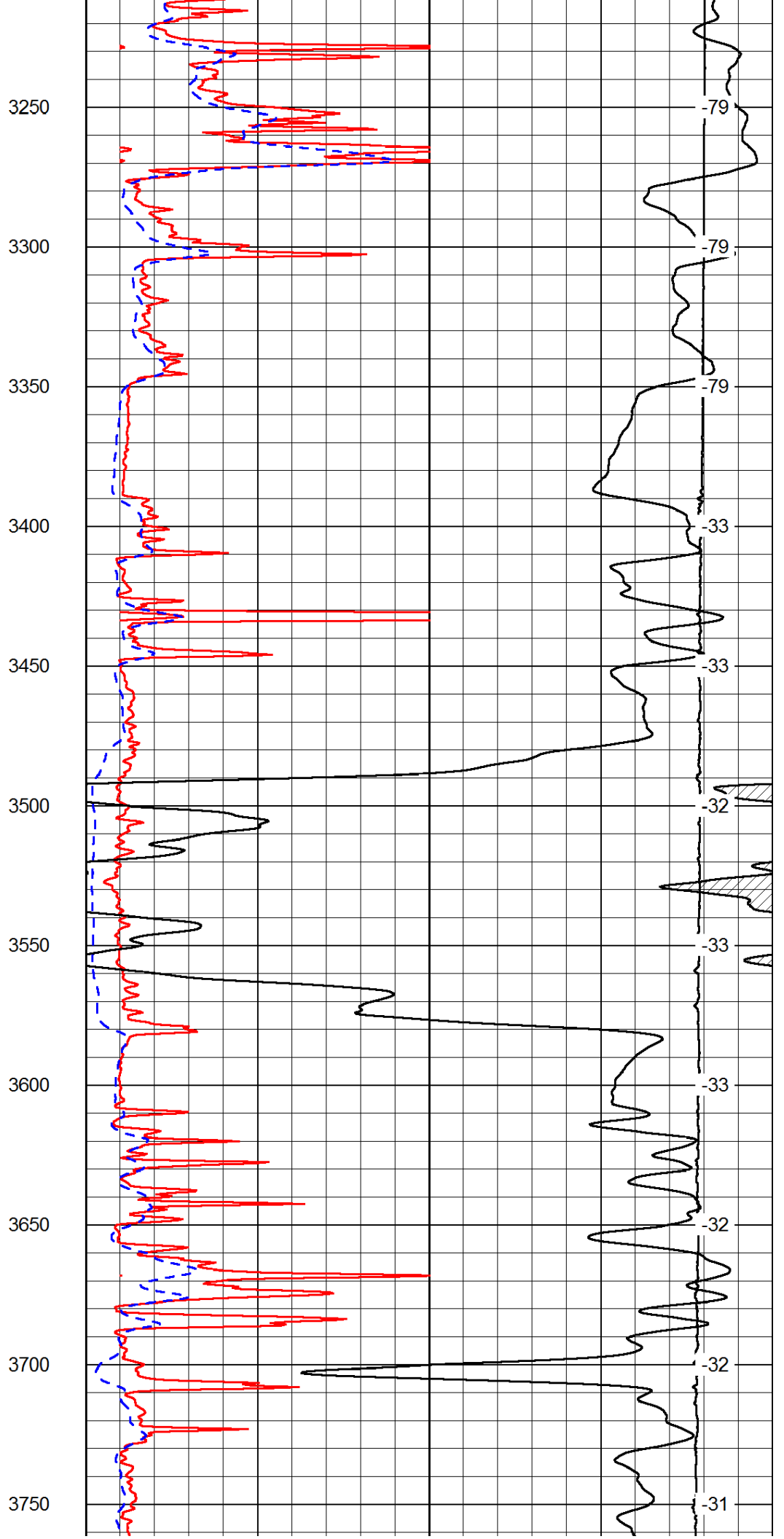
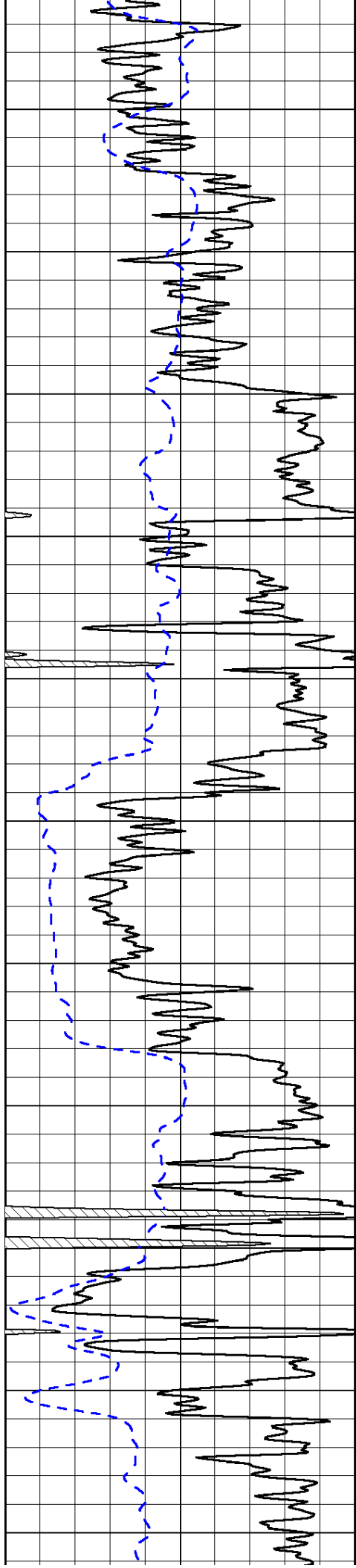


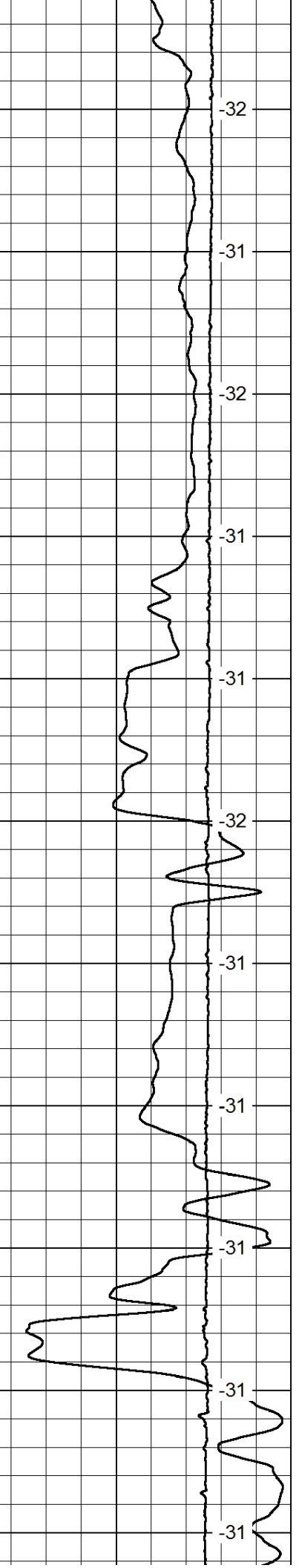
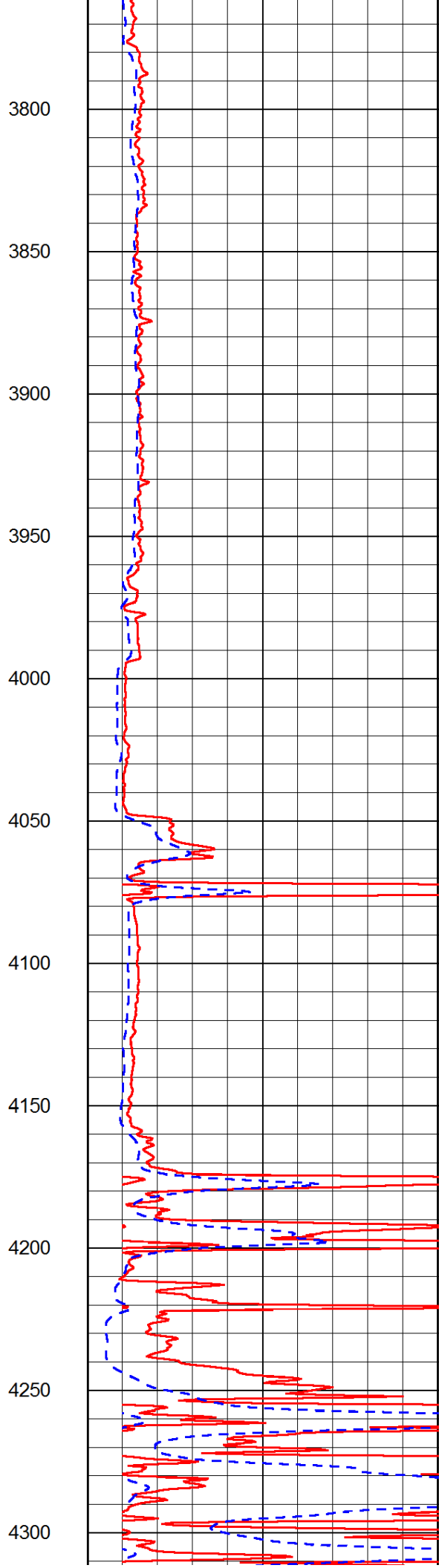
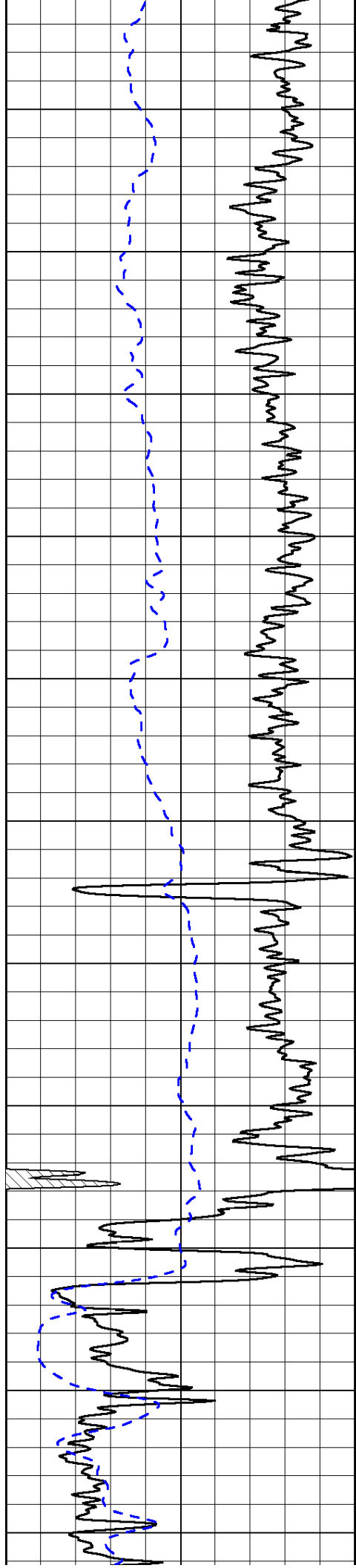


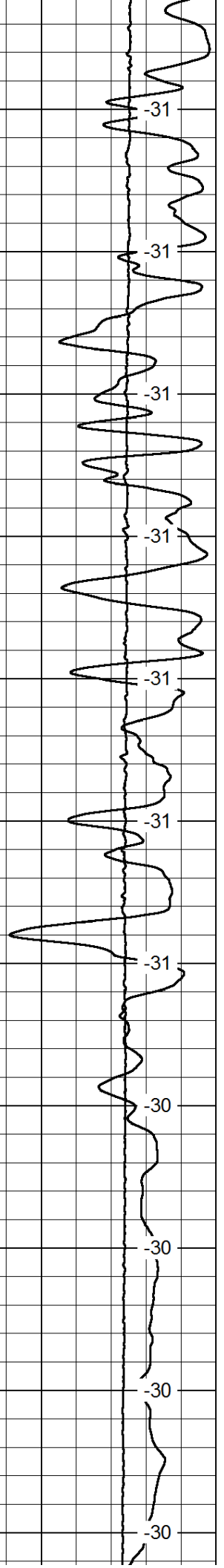
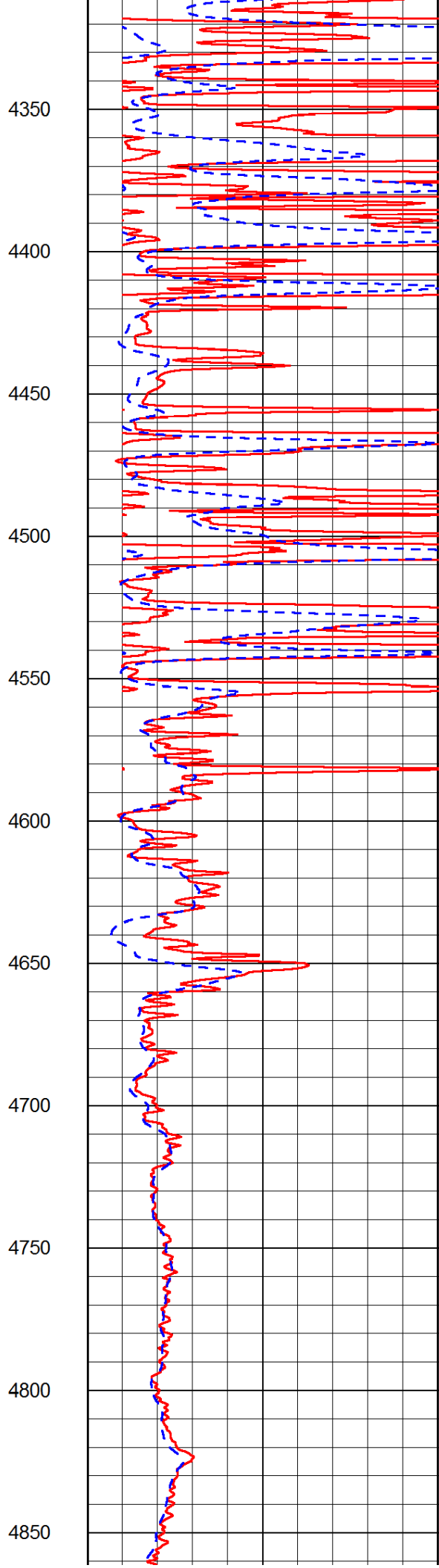
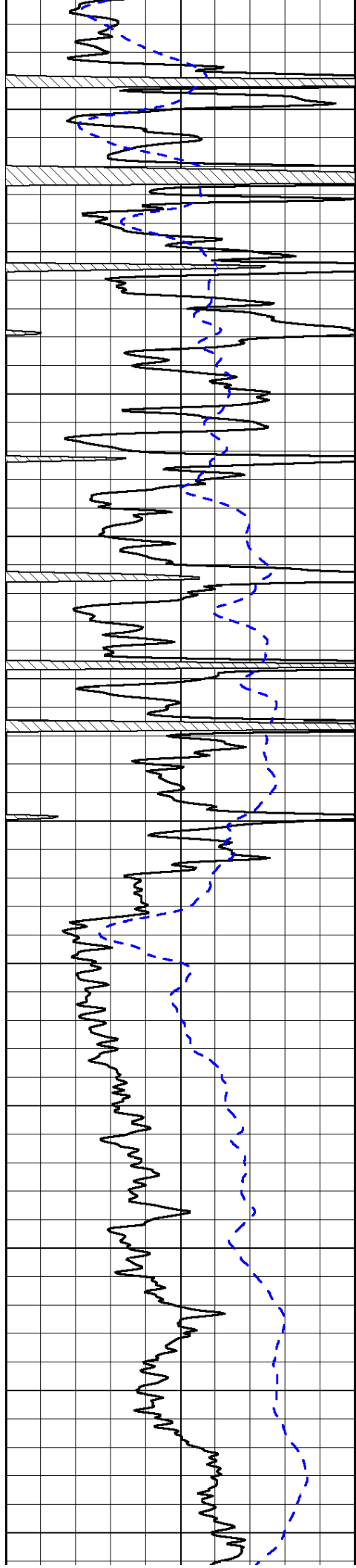


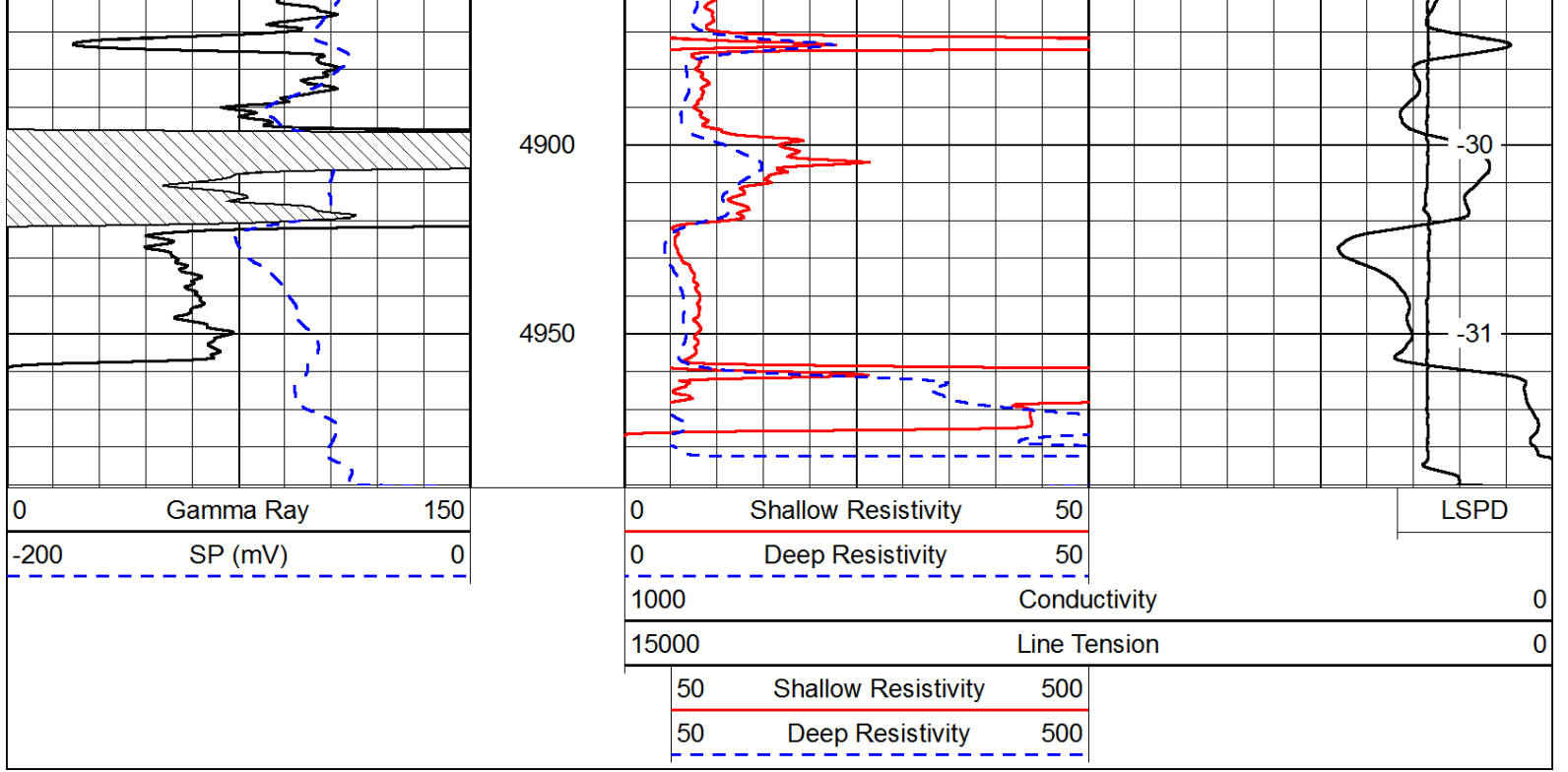




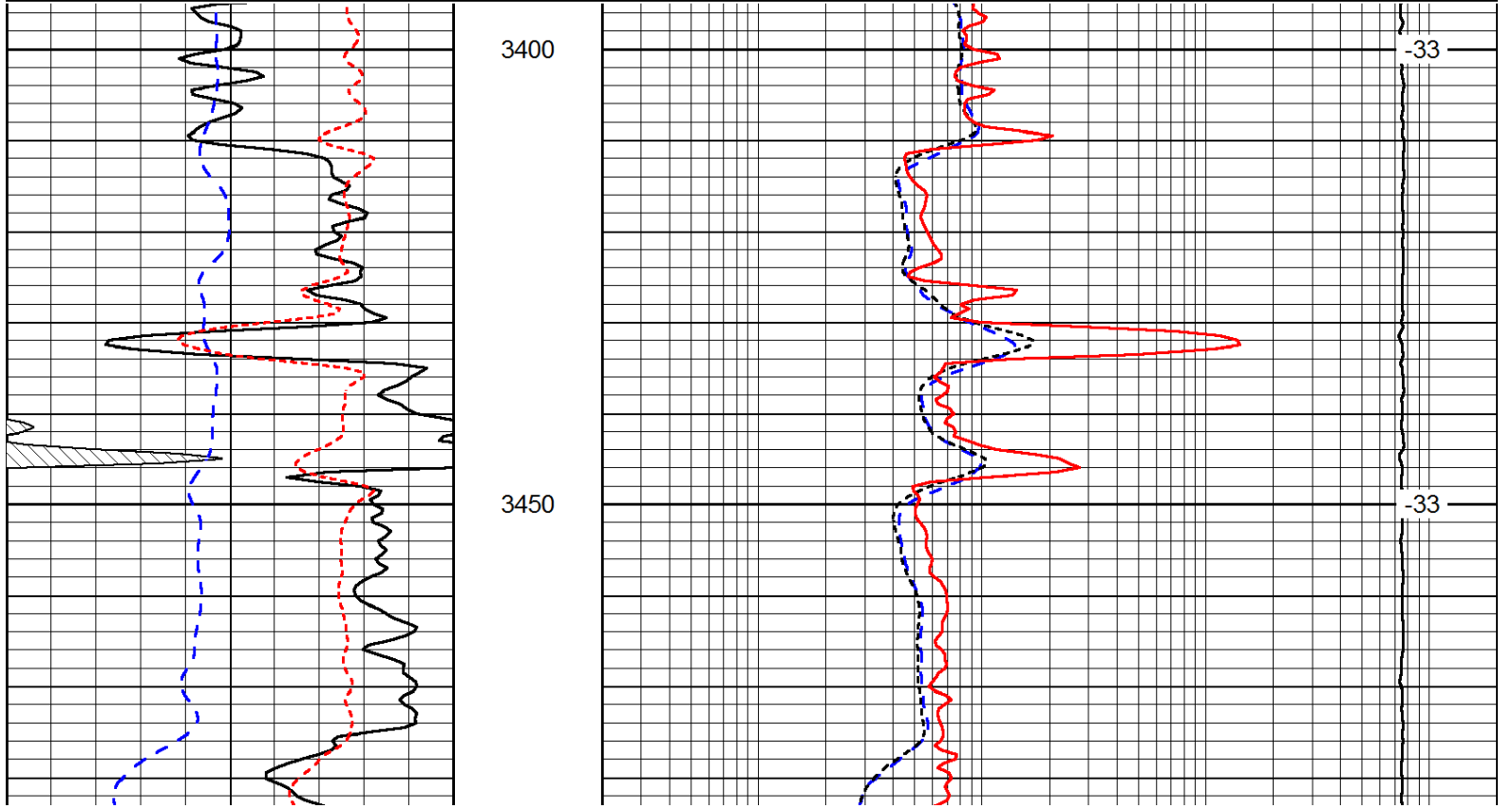
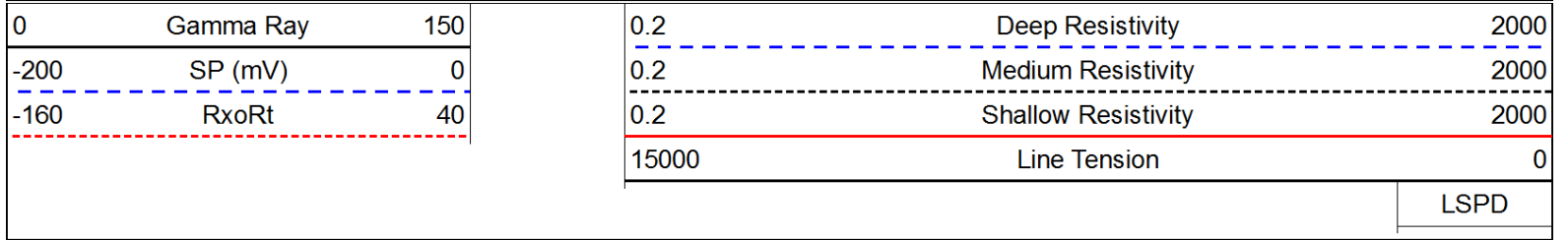


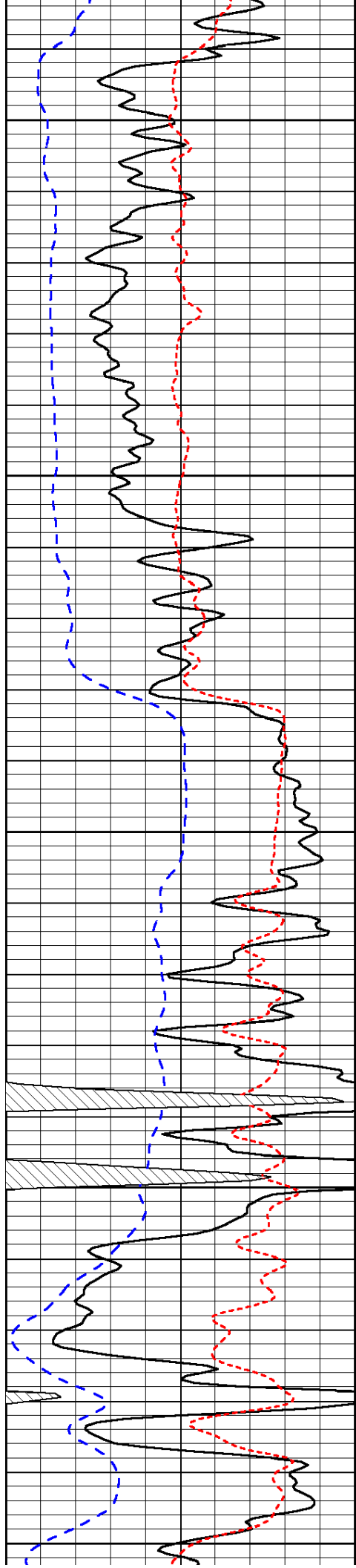






Database File: c:\warrior\data\n-10_medicine river ranch 'e' #3\n10hd.db
 Dataset Pathname: dil/n10stk
 Presentation Format: dil
 Dataset Creation: Wed Mar 05 14:10:15 2014
 Charted by: Depth in Feet scaled 1:240





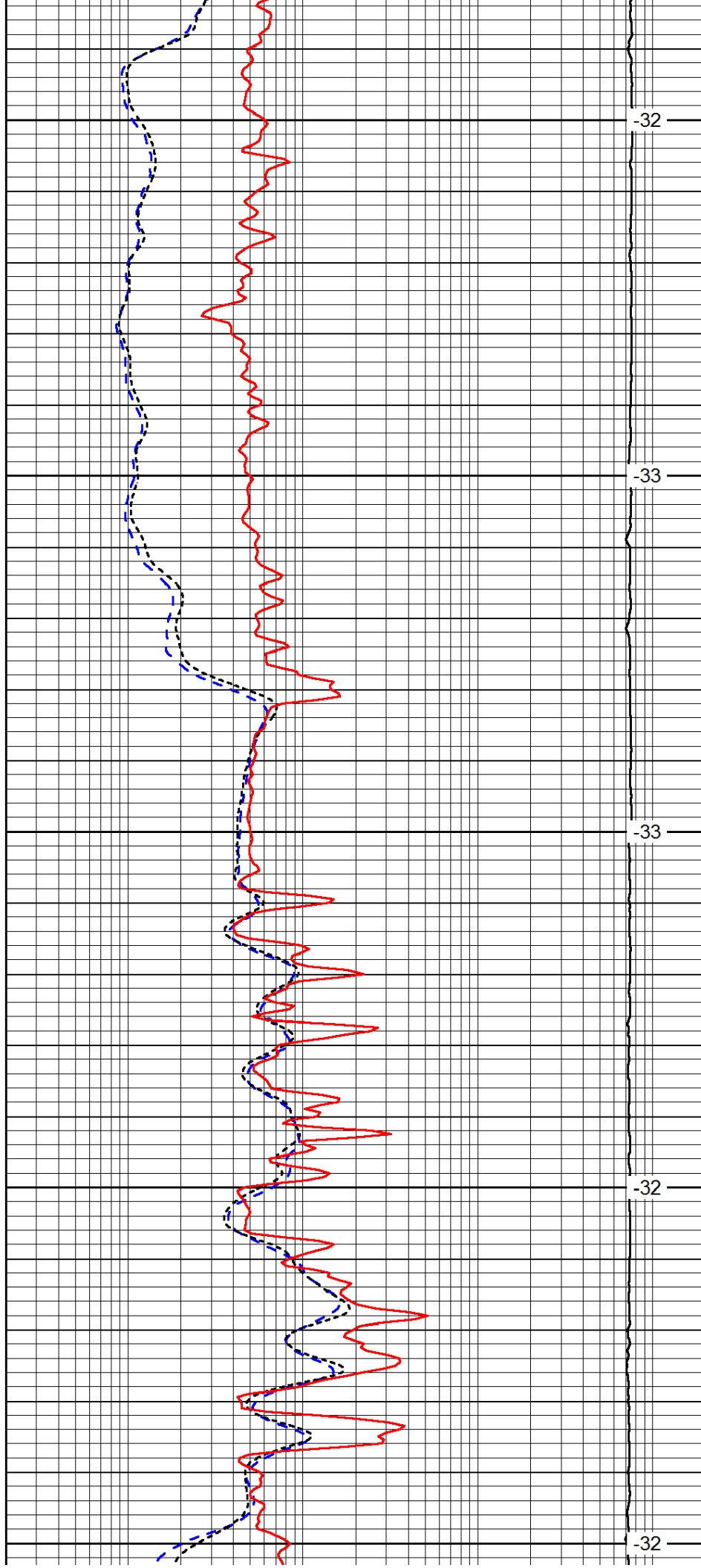
3500

3550

3600

3650

3700



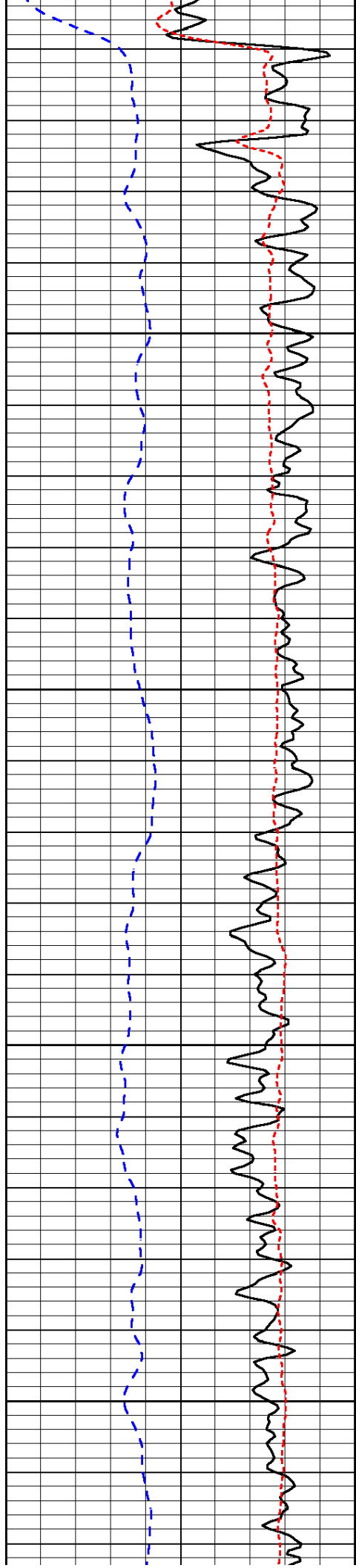
32

33

33

32

32

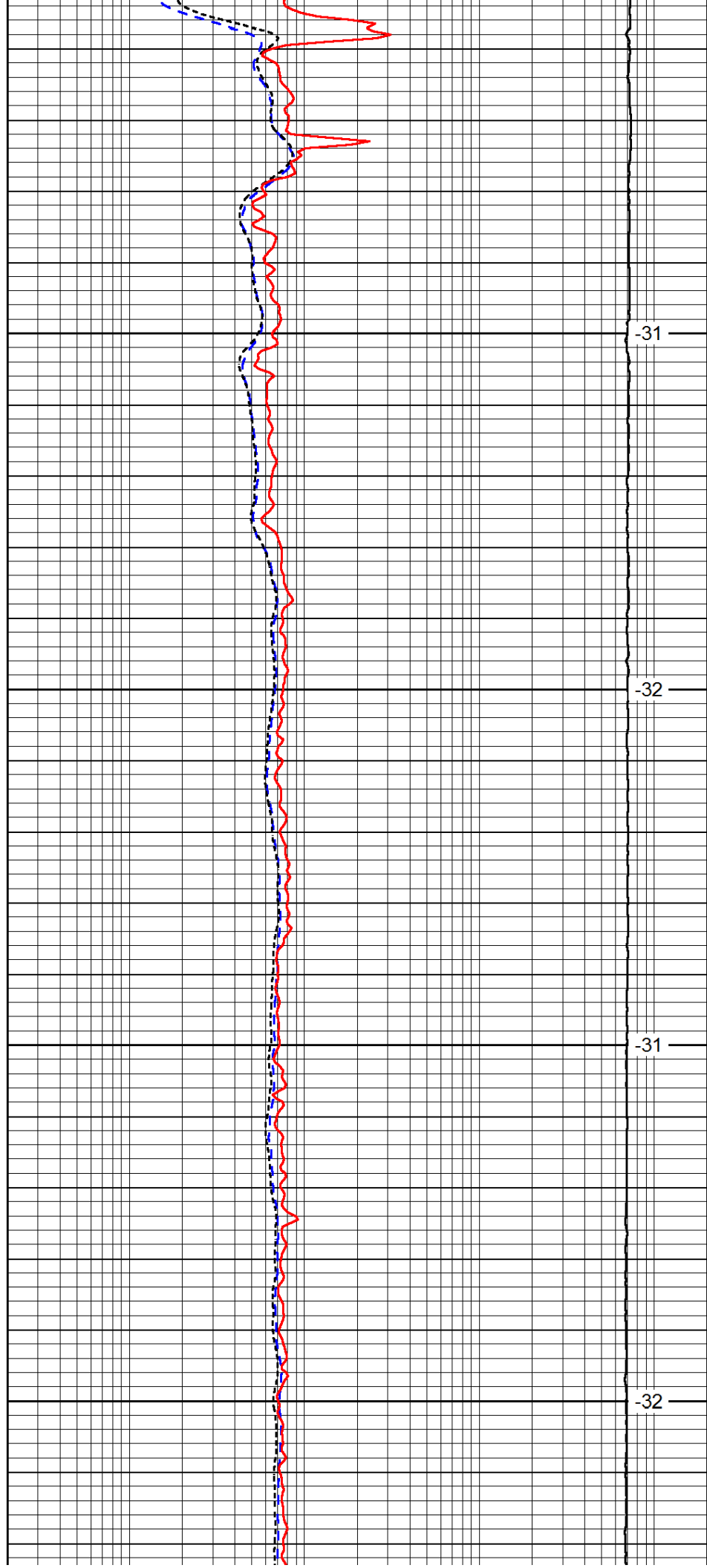


3750

3800

3850

3900

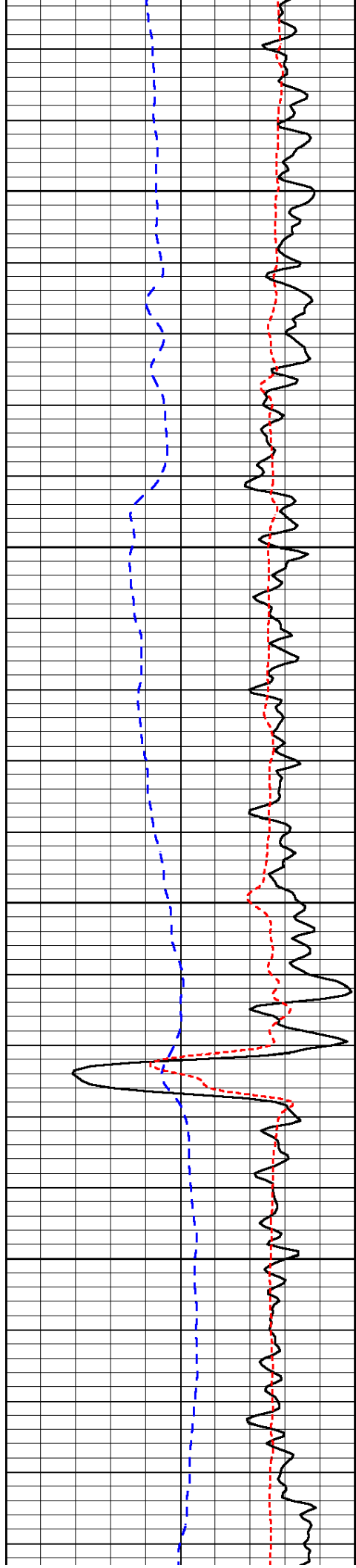


-31

-32

-31

-32

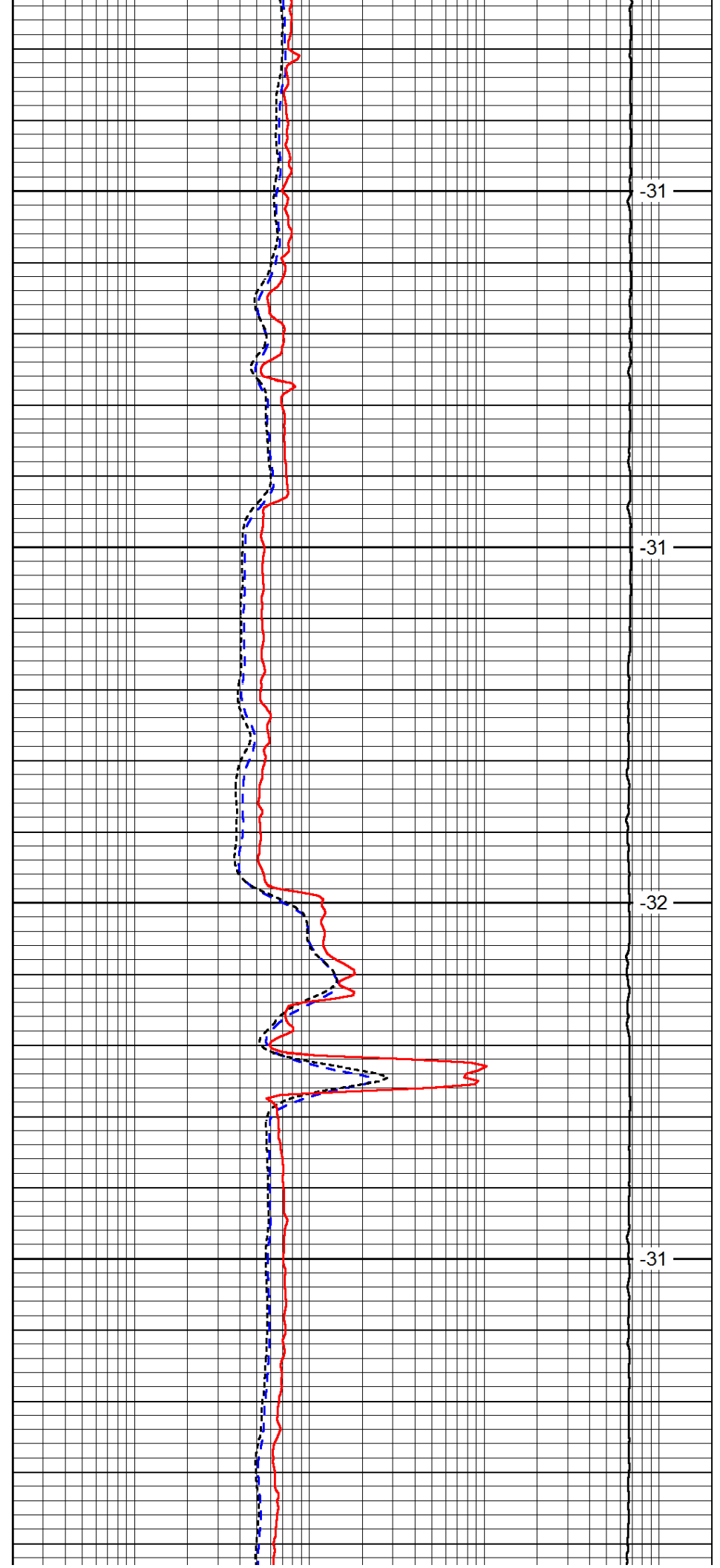


3950

4000

4050

4100

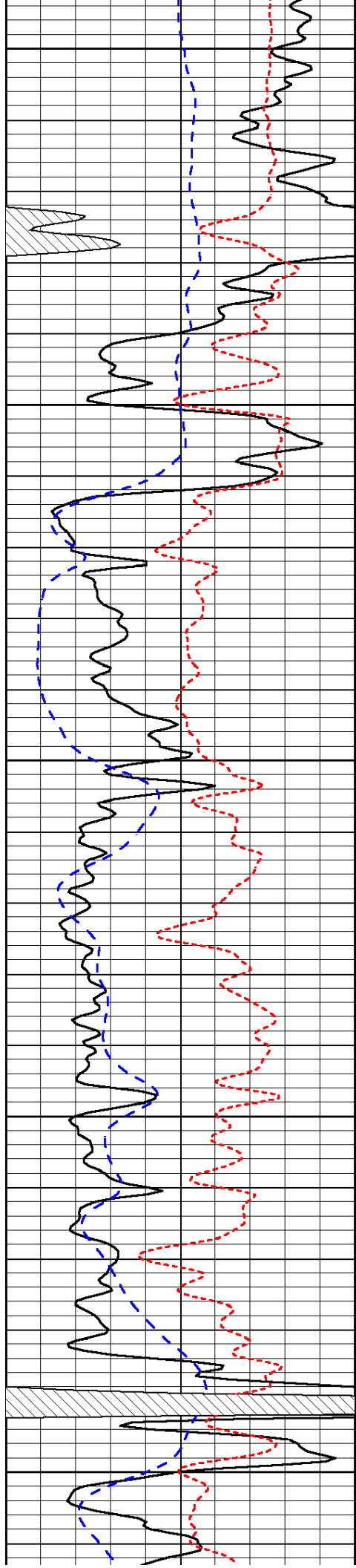


-31

-31

-32

-31



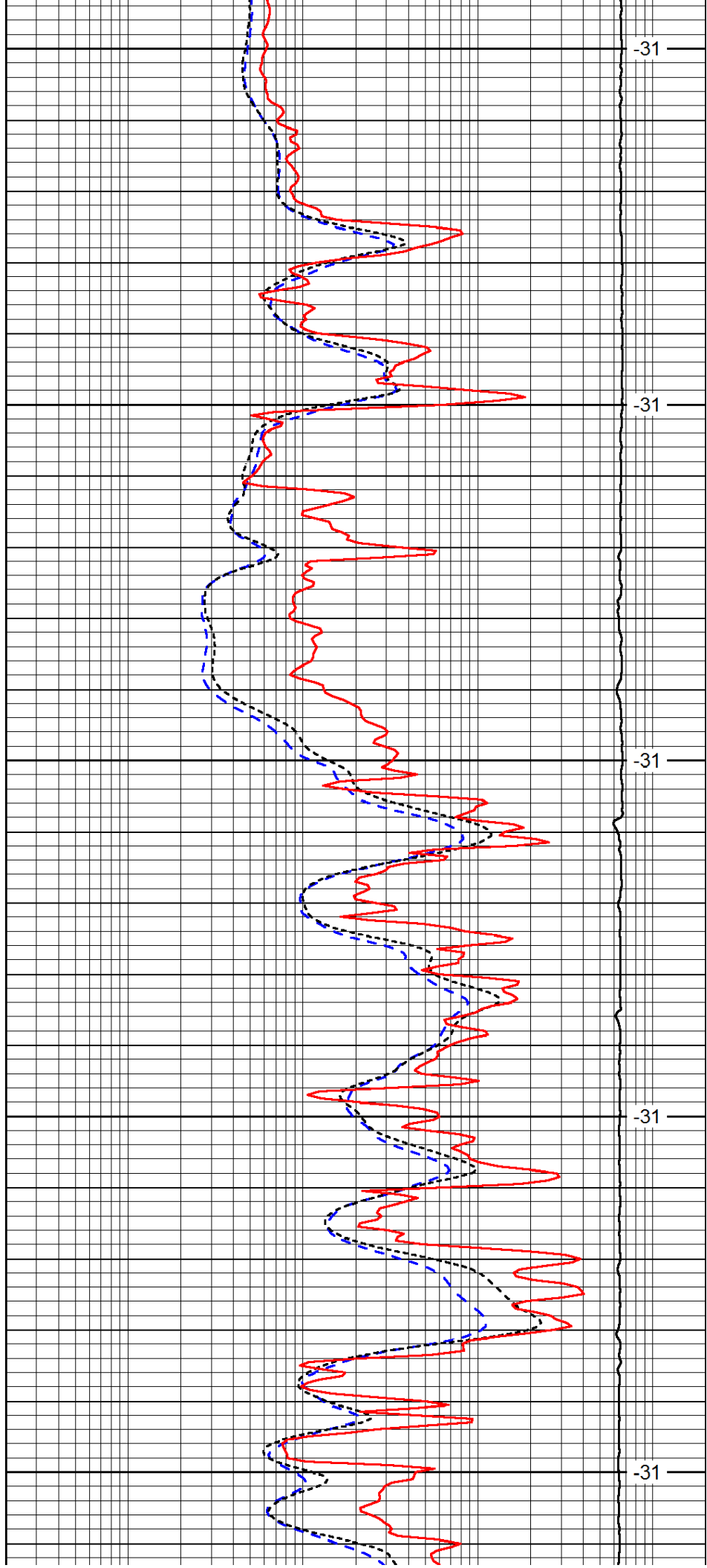
4150

4200

4250

4300

4350



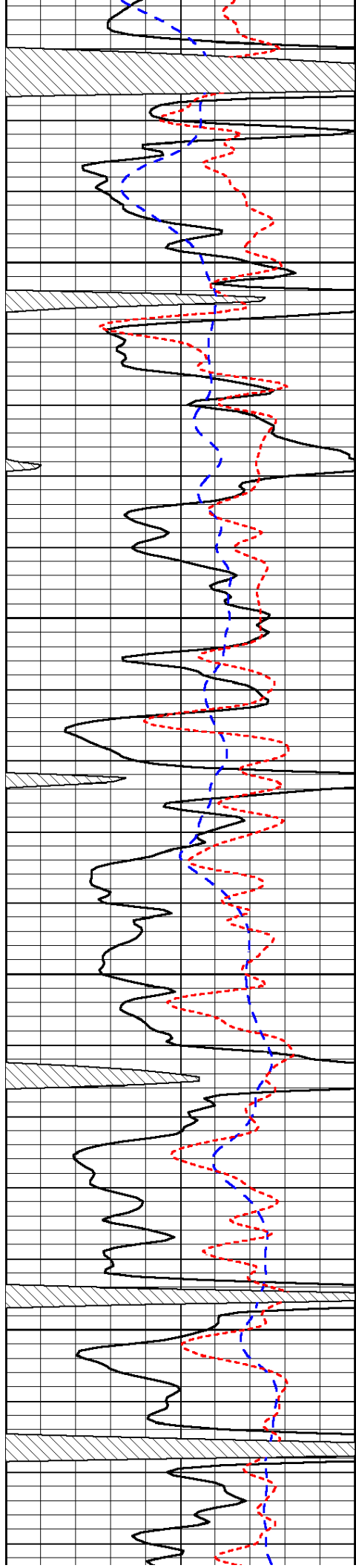
-31

-31

-31

-31

-31

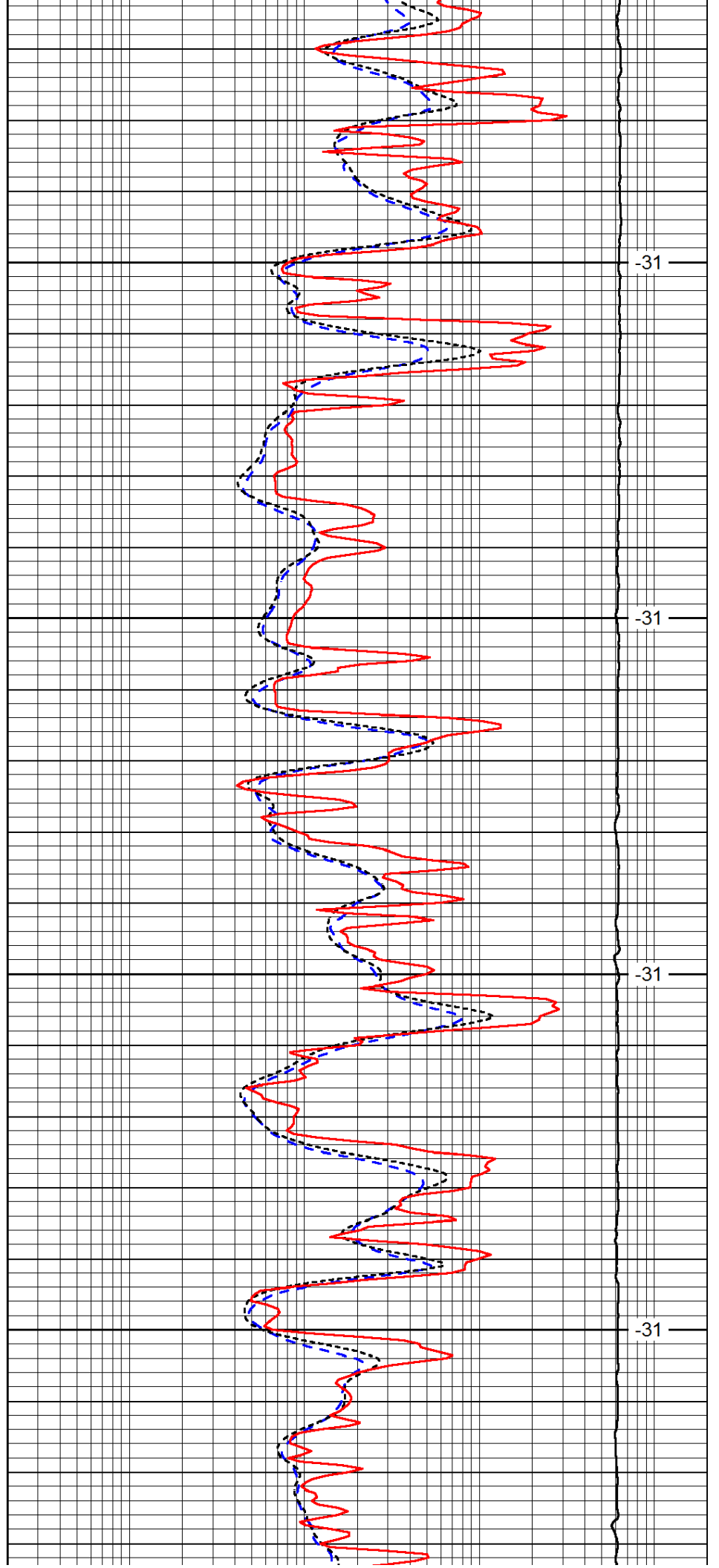


4400

4450

4500

4550

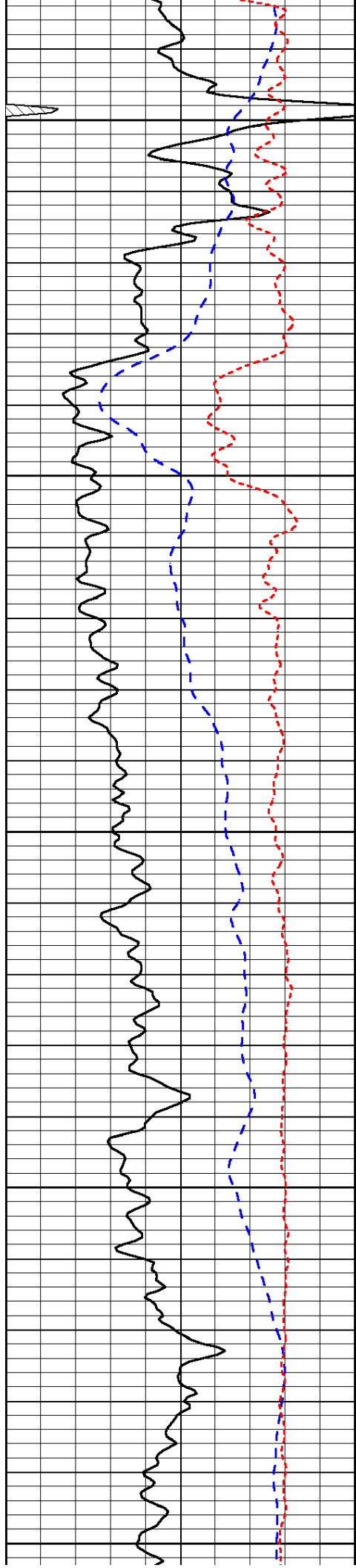


-31

-31

-31

-31



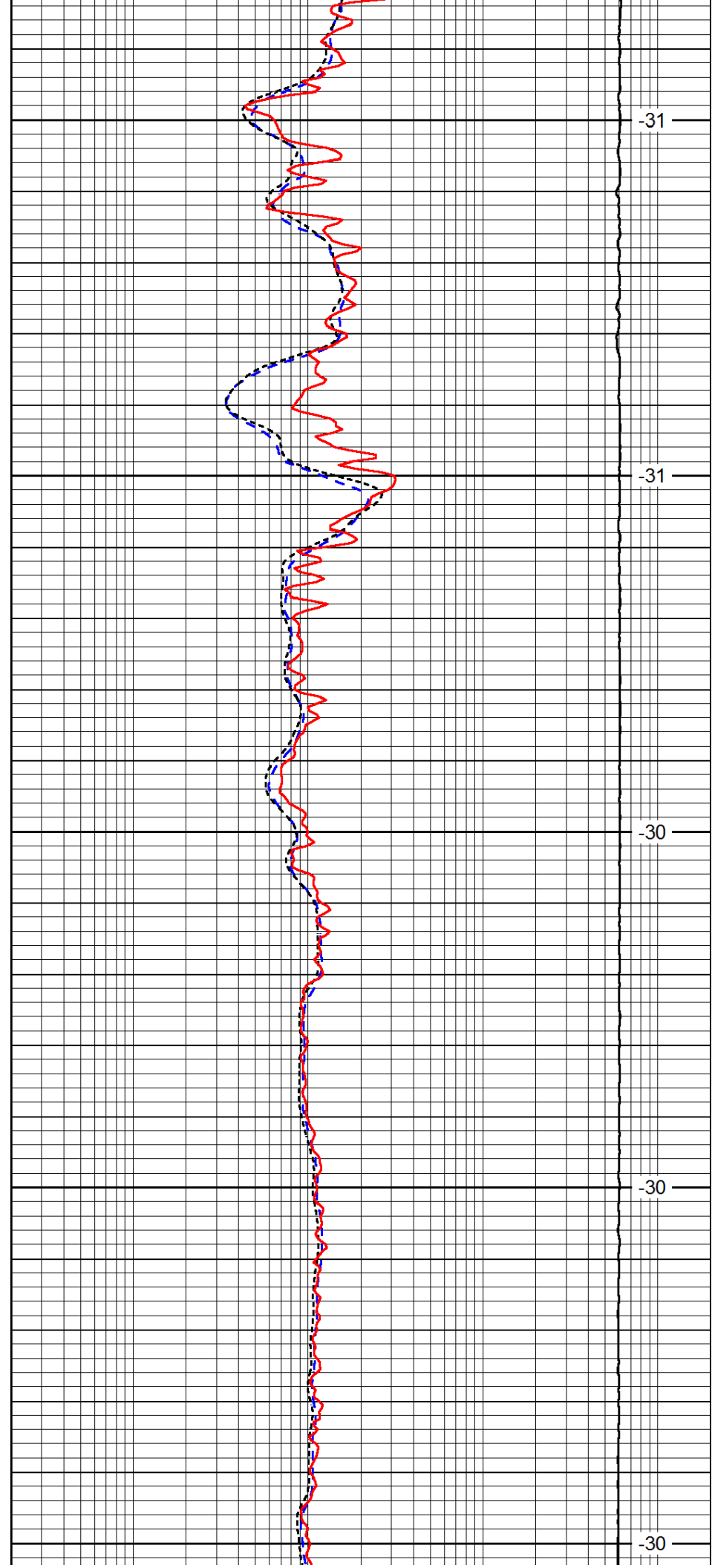
4600

4650

4700

4750

4800



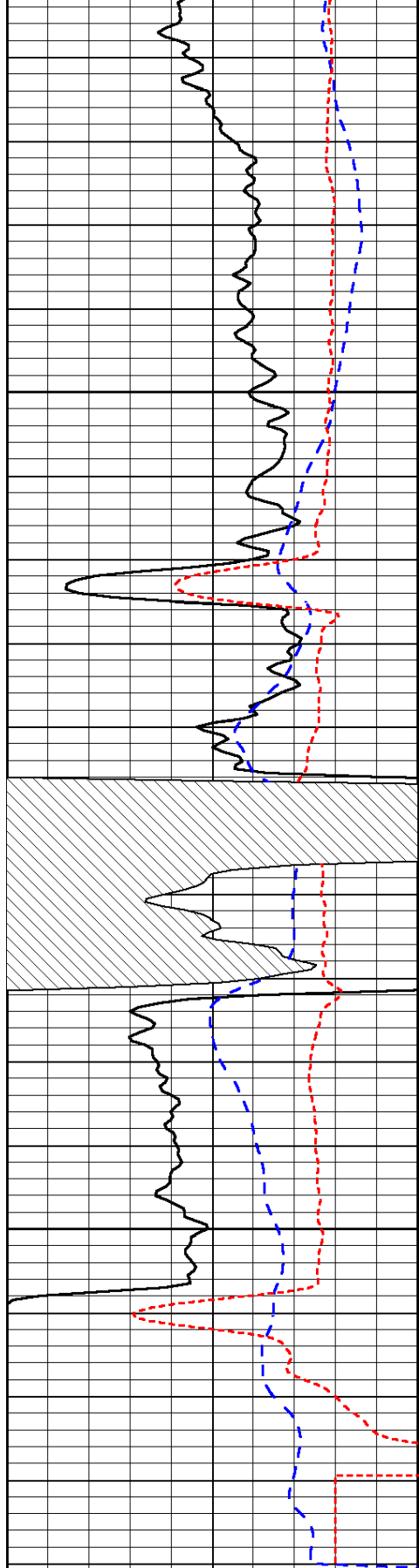
-31

-31

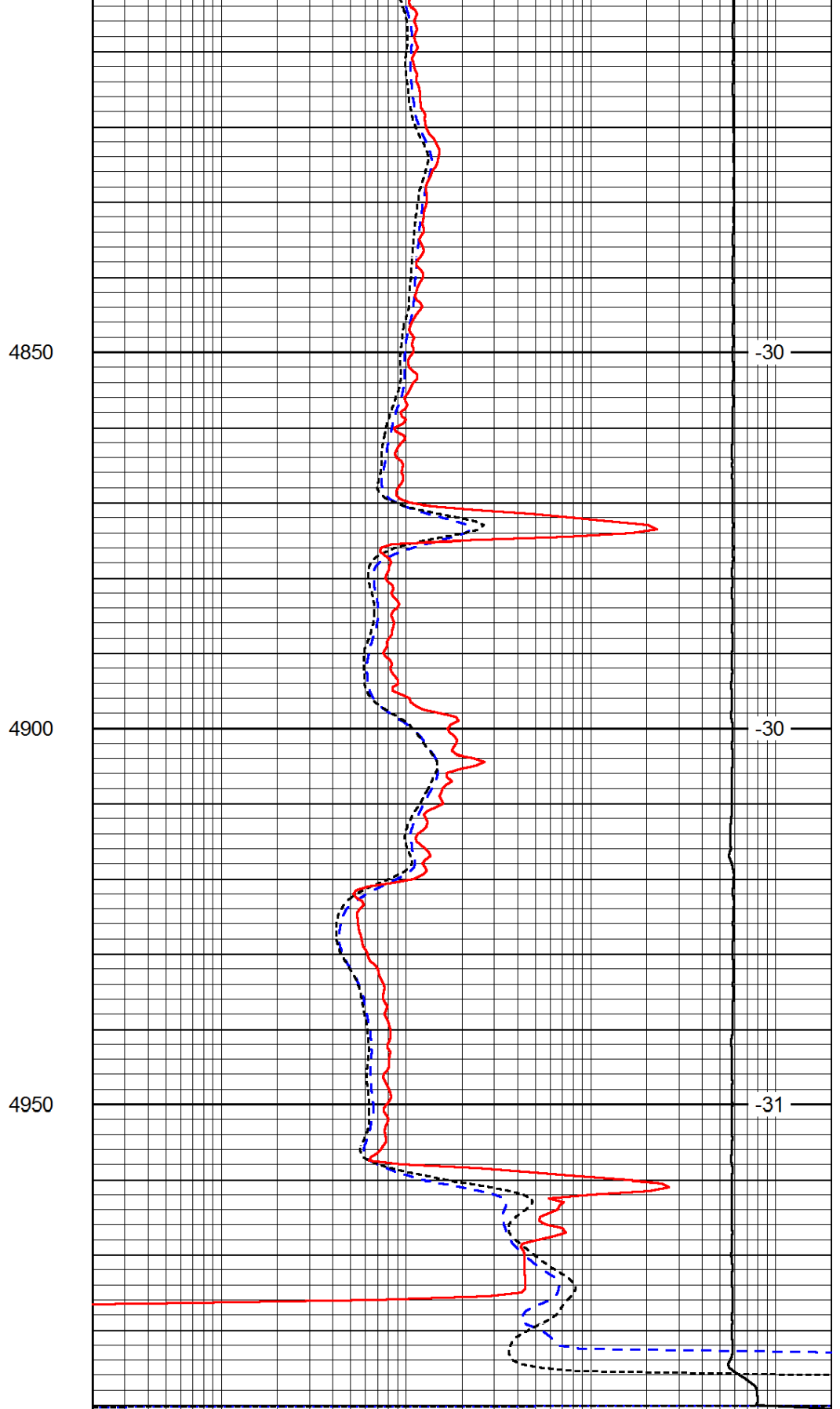
-30

-30

-30



0	Gamma Ray	150
-200	SP (mV)	0
-160	RxoRt	40



0.2	Deep Resistivity	2000
0.2	Medium Resistivity	2000
0.2	Shallow Resistivity	2000
15000	Line Tension	0

LSPD