



**MIDWEST SURVEYS**  
 LOGGING - PERFORATING - CONSULTING SERVICES  
 P.O. Box 68, Osawatomie, KS 68064  
 913.735.2128

**GAMMA RAY / NEUTRON / CCL**

File No.

Company **RJ Enterprises**

Well **Ware No. 48-A**

Field **Bush City Shoestring**

County **Anderson** State **Kansas**

Location **3764' FSL & 2345' FEL  
NIM/NW-SW-NE**

Other Services  
Perforate

Sec. 15 Twp. 21s Rge. 20e

Permanent Datum **GL** Elevation **NA**

Log Measured From **GL**

Drilling Measured From **GL**

Elevation  
KB NA  
DF NA  
GL NA

Date **02-18-2014**

Run Number **One**

Depth Driller **888.0**

Bottom Logged Interval **887.0**

Top Log Interval **20.0**

Fluid Level **Full**

Type Fluid **Water**

Density / Viscosity **NA**

Salinity - PPM Cl **NA**

Max Recorded Temp **NA**

Estimated Cement Top **0.0**

Equipment No. **102** Location **Osawatomie**

Recorded By **Garl Windisch**

Witnessed By **Jason Kariil**

BORE-HOLE RECORD

NO. BIT FROM TO SIZE WGT. FROM TO

One 9.875" 0.0 20.0 7.00" 17.0# 0.0 20.0

Two 5.825" 20.0 893.0 2.875" 6.5# 0.0 893.0

CASING RECORD

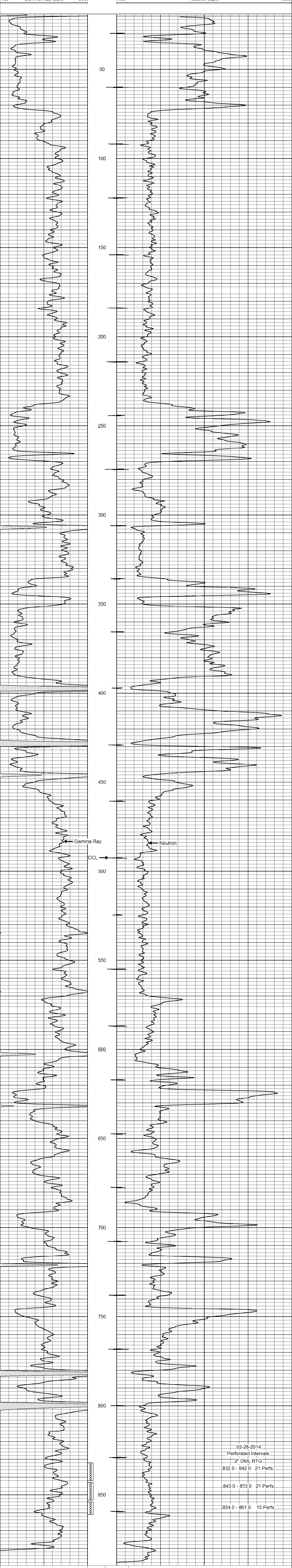
<<< Fold Here >>>

All interpretations are opinions based on inferences from electrical or other measurements and we cannot and do not guarantee the accuracy or correctness of any interpretation, and we shall not, except in the case of gross or willful negligence on our part, be liable or responsible for any loss, costs, damages, or expenses incurred or sustained by anyone resulting from any interpretation made by any of our officers, agents or employees. These interpretations are also subject to our general terms and conditions set out in our current Price Schedule.

Comments

Drilling Contractor :  
RJ Enterprises

Database File: ware48a.db  
 Dataset Pathname: pass1  
 Presentation Format: gr-n-ccl  
 Dataset Creation: Tue Feb 18 13:27:51 2014 by Log SCH 111116  
 Charted by: Depth in Feet scaled 1:240



0 Gamma Ray (cps) 150  
 150 Gamma Ray (cps) 300  
 -1 CCL 1  
 100 Neutron (cps) 1900