



MIDWEST SURVEYS
 LOGGING - PERFORATING - CONSULTING SERVICES
 P.O. Box 68, Osawatomie, KS 66064
 913.755.2128

GAMMA RAY / NEUTRON / CCL

File No. _____

Company **RJ Enterprises**

Well **Ware No. 47-A**

Field **Bush City Shoestring**

County **Anderson** State **Kansas**

Location **4134' FSL & 2297' FEL**

SE-SW-NW-NE

Sec. 15 Twp. 21S Rge. 20E

Permit/Datum Log Measured From Drilling Measured From

GL GL GL

Elevation K.B. NA D.F. NA G.L. NA

Date **02-28-2014**

Run Number **One**

Depth Driller **884.0**

Bottom Logged Interval **877.0**

Top Log Interval **876.0**

Fluid Level **20.0**

Fluid Level **Full**

Type Fluid **Water**

Density / Viscosity **NA**

Salinity - PPM Cl **NA**

Max Recorded Temp **NA**

Estimated Cement Top **NA**

Equipment No. **0.0**

Location **102 Osawatomie**

Recorded By **Gary Winkisch**

Witnessed By **Jason Kent**

BORE-HOLE RECORD

RUN No. BIT FROM TO

One 9.875" 0.0 20.0

Two 5.625" 20.0 884.0

CASING RECORD

SIZE WGT. FROM TO

7.00" 17.0# 0.0 20.0

2.875" 6.5# 0.0 878.0

<<< Fold Here >>>

All interpretations are opinions based on inferences from electrical or other measurements and we cannot and do not guarantee the accuracy or correctness of any interpretation, and we shall not, except in the case of gross or willful negligence on our part, be liable or responsible for any loss, costs, damages, or expenses incurred or sustained by anyone resulting from any interpretation made by any of our officers, agents or employees. These interpretations are also subject to our general terms and conditions set out in our current Price Schedule.

Comments

Drilling Contractor : RJ Enterprises

Database File: ware47a.db

Dataset Pathname: pass1

Presentation Format: gr-n-ccl

Dataset Creation: Fri Feb 28 08:41:52 2014 by Log SCH 111116

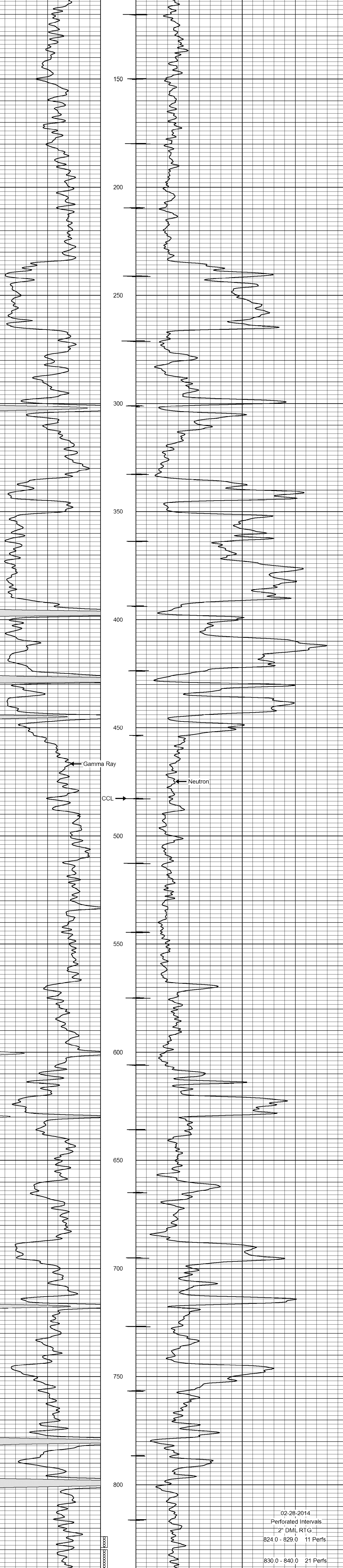
Charted by: Depth in Feet scaled 1:240

0 Gamma Ray (cps) 150

150 Gamma Ray (cps) 300

-1 CCL 1

100 Neutron (cps) 1900



0 Gamma Ray (cps) 150

150 Gamma Ray (cps) 300

-1 CCL 1

100 Neutron (cps) 1900

02-28-2014
 Perforated Intervals
 2" DML RTG
 824.0 - 829.0 11 Perfs
 830.0 - 840.0 21 Perfs
 841.0 - 851.0 21 Perfs