



MIDWEST SURVEYS
 LOGGING - PERFORATING - CONSULTING SERVICES
 P.O. Box 68, Osawatomie, KS 66064
 913 / 755 - 2128

GAMMA RAY / NEUTRON / CCL

File No. _____

Company **RJ Enterprises**

Well **Ware No. 35-1**

Field **Bush City Shoestring**

County **Anderson** State **Kansas**

Location **4691' FSL & 815' FEL**
SE-NW-NE-NE

Sec. **15** Twp. **21S** Rge. **20E**

Permit/Datum **GL** Elevation **NA**

Log Measured From **GL** K8 NA

Drilling Measured From **GL** D.F. NA

Date **02-12-2014**

Run Number **One**

Depth Driller **834.0**

Depth Logger **827.8**

Bottom Logged Interval **826.8**

Top Log Interval **20.0**

Other Services	Perforate

Type Fluid	Water
Density / Viscosity	NA
Salinity - PPM Cl	NA
Max Recorded Temp	NA
Estimated Cement Top	0.0
Equipment No.	102
Location	Osawatomie
Recorded By	Gary Mindisch
Witnessed By	Jason Kent

BORE-HOLE RECORD				CASING RECORD			
RUN	BIT	FROM	TO	SIZE	WGT.	FROM	TO
One	9.875"	0.0	20.0	7.00"	17.0 #	0.0	20.0
Two	5.825"	20.0	834.0	2.875"	6.5 #	0.0	826.4

<<< Fold Here >>>

All interpretations are opinions based on inferences from electrical or other measurements and we cannot and do not guarantee the accuracy or correctness of any interpretation, and we shall not, except in the case of gross or willful negligence on our part, be liable or responsible for any loss, costs, damages, or expenses incurred or sustained by anyone resulting from any interpretation made by any of our officers, agents or employees. These interpretations are also subject to our general terms and conditions set out in our current Price Schedule.

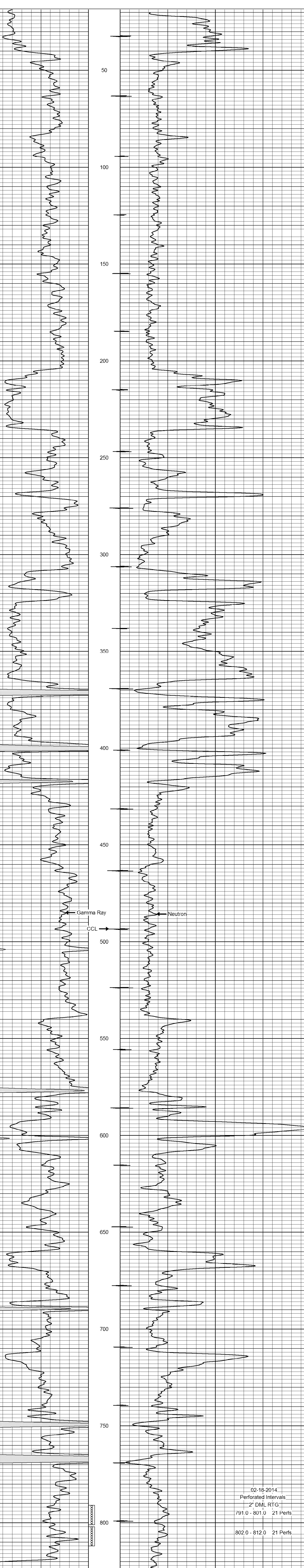
Comments

Drilling Contractor :
 RJ Enterprises

Database File: ware35i.db
 Dataset Pathname: pass1
 Presentation Format: gr-n-ccl
 Dataset Creation: Wed Feb 12 12:45:50 2014 by Log SCH 111116
 Charted by: Depth in Feet scaled 1:240

0 Gamma Ray (cps) 150
 150 Gamma Ray (cps) 300

-1 CCL 1
 100 Neutron (cps) 1900



0 Gamma Ray (cps) 150
 150 Gamma Ray (cps) 300

-1 CCL 1
 100 Neutron (cps) 1900

02-18-2014
 Perforated Intervals
 2" DML RTG
 791.0 - 801.0 21 Perfs
 802.0 - 812.0 21 Perfs