

MIDWEST SURVEYS
 LOGGING - PERFORATING - CONSULTING SERVICES
 P.O. Box 68, Osawatomie, KS 66064
 913 / 755 - 2128

GAMMA RAY / NEUTRON / CCL

File No. _____

Company **RJ Enterprises**

Well **Wilson - Melcher No. 16-A**

Field **Bush City Shoestring**

County **Anderson** State **Kansas**

Location **192' FSL & 3596' FEL**
SE-SW-SE-SW

Other Services
Perforate

Sec 8
Permament Datum
Log Measured From
Drilling Measured From

Typ 21s Rge 20e
GL GL
GL GL

Elevation
K 8 NA
D 6 NA
G L NA

Date
03-27-2014

Run Number
One

Depth Driller
842.0

Depth Logger
832.0

Bottom Logged Interval
831.0

Top Log Interval
20.0

Fluid Level
Full

Type Fluid
Water

Density / Viscosity
NA

Salinity - PPM Cl
NA

Max Recorded Temp
NA

Estimated Cement Top
0.0

Equipment No. Location
102 Osawatomie

Recorded By
Gary Mindisen

Witnessed By
Jason Kent

BOREHOLE RECORD				CASING RECORD			
RUN No.	BIT	FROM	TO	SIZE	WGT.	FROM	TO
One	9.875"	0.0	20.0	7.00"	17.0 #	0.0	20.0
Two	5.825"	20.0	842.0	2.875"	6.5 #	0.0	838.0

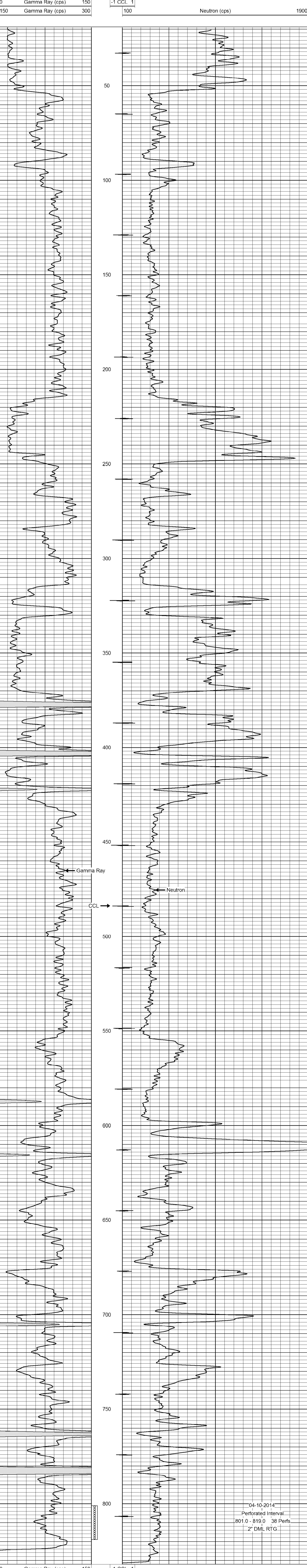
<<< Fold Here >>>

All interpretations are opinions based on inferences from electrical or other measurements and we cannot and do not guarantee the accuracy or correctness of any interpretation, and we shall not, except in the case of gross or willful negligence on our part, be liable or responsible for any loss, costs, damages, or expenses incurred or sustained by anyone resulting from any interpretation made by any of our officers, agents or employees. These interpretations are also subject to our general terms and conditions set out in our current Price Schedule.

Comments

Drilling Contractor :
RJ Enterprises

Database File: melcher16aw.db
 Dataset Pathname: pass1
 Presentation Format: gr-n-ccl
 Dataset Creation: Thu Mar 27 15:49:17 2014 by Log SCH 111116
 Charted by: Depth in Feet scaled 1:240



04-10-2014
 801.0 - 819.0 38 Perfs
 2" DML RTG