



MIDWEST SURVEYS
 LOGGING - PERFORATING - CONSULTING SERVICES
 P.O. Box 68, Osawatomie, KS 66064
 913.755.2128

GAMMA RAY / NEUTRON / CCL

File No. _____

Company **RJ Enterprises**

Well **Wilson - Melcher No. 17-A**

Field **Bush City Shoestring**

County **Anderson** State **Kansas**

Location **538 FSL & 3621st FEL
NE-SW-SE-SW**

Other Services
Perforate

Sec. 8 Twp. 21S Rge. 20E
 Permit/Datum Log Measured From Drilling Measured From
 GL GL GL
 Elevation
 KB NA
 DF NA
 GL NA

Date **03-27-2014**
 Run Number **One**
 Depth Driller **872.0**
 Depth Logger **889.0**
 Bottom Logged Interval **887.0**
 Top Log Interval **20.0**
 Fluid Level **Full**

Type Fluid **Water**
 Density / Viscosity **NA**
 Salinity - PPM Cl **NA**
 Max Recorded Temp **NA**
 Estimated Cement Top **NA**
 Equipment No. **102** Location **Osawatomie**
 Recorded By **Gary Windisch**
 Witnessed By **Jason Kent**

BORE-HOLE RECORD		CASING RECORD				
RUN	BIT	TO	SIZE	WGT	FROM	TO
One	9.875"	20.0	7.00"	17.0 #	0.0	20.0
Two	5.525"	20.0	8.72.0	2.575"	6.5 #	0.0
						889.2

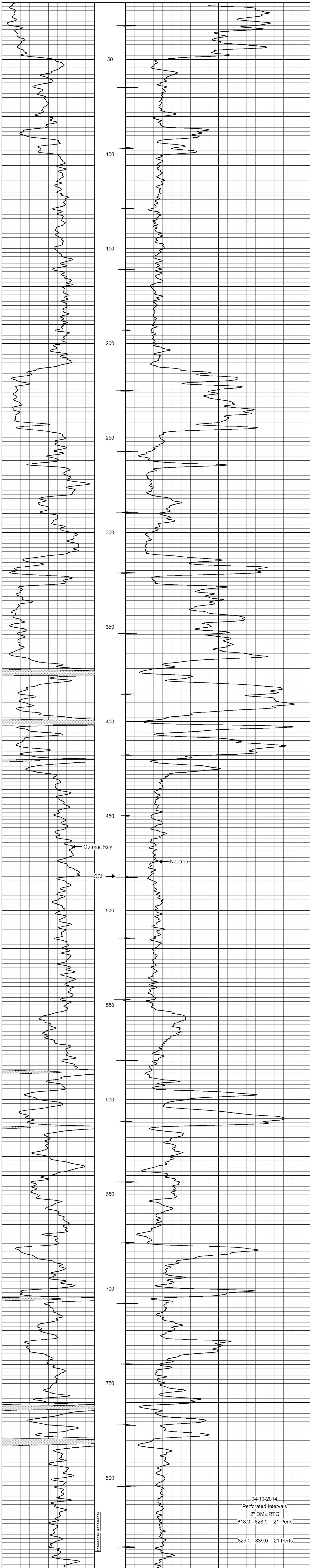
<<< Fold Here >>>

All interpretations are opinions based on inferences from electrical or other measurements and we cannot and do not guarantee the accuracy or correctness of any interpretation, and we shall not, except in the case of gross or willful negligence on our part, be liable or responsible for any loss, costs, damages, or expenses incurred or sustained by anyone resulting from any interpretation made by any of our officers, agents or employees. These interpretations are also subject to our general terms and conditions set out in our current Price Schedule.

Comments

Drilling Contractor :
RJ Enterprises

Database File: melcher17aw.db
 Dataset Pathname: pass1
 Presentation Format: gr-n-ccl
 Dataset Creation: Thu Mar 27 15:11:14 2014 by Log SCH 111116
 Charted by: Depth in Feet scaled 1:240



04-10-2014
 Perforated Intervals
 2" DML RTG
 818.0 - 828.0 21 Perfs
 829.0 - 839.0 21 Perfs

0 Gamma Ray (cps) 150
 150 Gamma Ray (cps) 300

-1 CCL 1
 100 Neutron (cps) 1900