



MIDWEST SURVEYS
 LOGGING - PERFORATING - CONSULTING SERVICES
 P.O. Box 69, Osawatomie, KS 66064
 913 / 755 - 2128

GAMMA RAY / NEUTRON / CCL

File No.

Company **RJ Enterprises**

Well **SP Johnson No. 29-A**

Field **Bush City Shoestring**

County **Anderson** State **Kansas**

Location **1243 FSL & 3470 FEL**

Location **NE-NW-SE-SW**

Sec 7
 Permient Datum
 Log Measured From
 Drilling Measured From

Trips **21s** Rge. **20e**

GL GL GL

Elevation **NA**

KB NA
 DF NA
 GL NA

Other Services
 Perforate

Date **05-06-2014**

Run Number **One**

Depth Driller **842.0**

Depth Logger **838.7**

Bottom Logged Interval **837.7**

Top Log Interval **20.0**

Fluid Level **Full**

Type Fluid **Water**

Density / Viscosity **NA**

Salinity - PPM Cl **NA**

Max Recorded Temp **NA**

Estimated Cement Top **0.0**

Equipment No. **102** Location **Osawatomie**

Recorded By **Gay Windsch**

Witnessed By **Jason Kent**

| BORE-HOLE RECORD | | CASING RECORD | | TO | | |
|------------------|----------|---------------|--------|--------|------|-------|
| RUN No. | BIT FROM | TO | SIZE | WGT. | FROM | TO |
| One | 9.875" | 20.0 | 7.00" | 17.0 # | 0.0 | 20.0 |
| Two | 5.825" | 20.0 | 2.875" | 6.5 # | 0.0 | 838.7 |

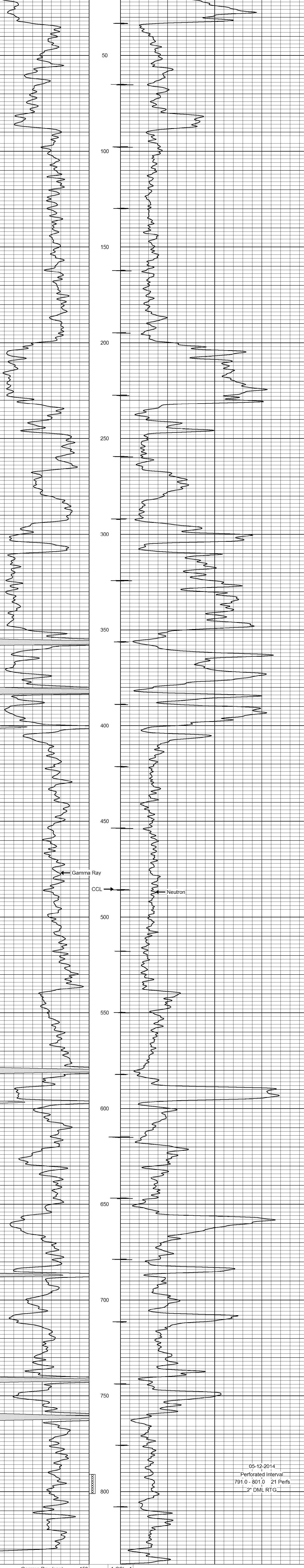
<<< Fold Here >>>

All interpretations are opinions based on inferences from electrical or other measurements and we cannot and do not guarantee the accuracy or correctness of any interpretation, and we shall not, except in the case of gross or willful negligence on our part, be liable or responsible for any loss, costs, damages, or expenses incurred or sustained by anyone resulting from any interpretation made by any of our officers, agents or employees. These interpretations are also subject to our general terms and conditions set out in our current Price Schedule.

Comments

Drilling Contractor :
 RJ Enterprises

Database File: johnson29asp.db
 Dataset Pathname: pass1
 Presentation Format: gr-n-ccl
 Dataset Creation: Tue May 06 16:15:23 2014 by Log SCH 111116
 Charted by: Depth in Feet scaled 1:240



05-12-2014
 Perforated Interval
 791.0 - 801.0 21 Perfs
 2" DML RTG.

0 Gamma Ray (cps) 150
 150 Gamma Ray (cps) 300

-1 CCL 1
 100 Neutron (cps) 1900