



Pioneer Energy Services

Borehole Compensated Sonic Log

15-065-23,965-00-00

Company H & C Oil Operating, Inc.
Well Griffith Unit No. 2 - 1
Field Wildcat
County Graham **State** Kansas
Location 990' FSL & 100' FWL
Sec: 2 **Twp:** 8 S **Rge:** 22 W
Other Services CNL/CDL MEL/DIL
Elevation 2139
Permanent Datum Ground Level **Elevation** 2139
Log Measured From Kelly Bushing **8 Ft. Above Perm. Datum**
Drilling Measured From Kelly Bushing
Date 8/16/2013
K.B. 2147
D.F.
G.L. 2139

Run Number	Two
Type Log	BHC Sonic
Depth Driller	3770
Depth Logger	3771
Bottom Logged Interval	3760
Top Logged Interval	200
Type Fluid In Hole	Chemical
Salinity, PPM CL	400
Density	9.0
Level	Full
Max. Rec. Temp. F	114
Operating Rig Time	5 Hours
Equipment -- Location	108 Hays
Recorded By	D. Martin
Witnessed By	Marc Downing

Borehole Record		Casing Record				
Run No.	Bit From	To	Size	Wgt.	From	To
One	12.25	00	220	8.625	23#	00
Two	7.875	220	TD			220

<<< Fold Here >>>

All interpretations are opinions based on inferences from electrical or other measurements and we cannot and do not guarantee the accuracy or correctness of any interpretation, and we shall not, except in the case of gross or willful negligence on our part, be liable or responsible for any loss, costs, damages, or expenses incurred or sustained by anyone resulting from any interpretation made by any of our officers, agents or employees. These interpretations are also subject to our general terms and conditions set out in our current Price Schedule.

Comments

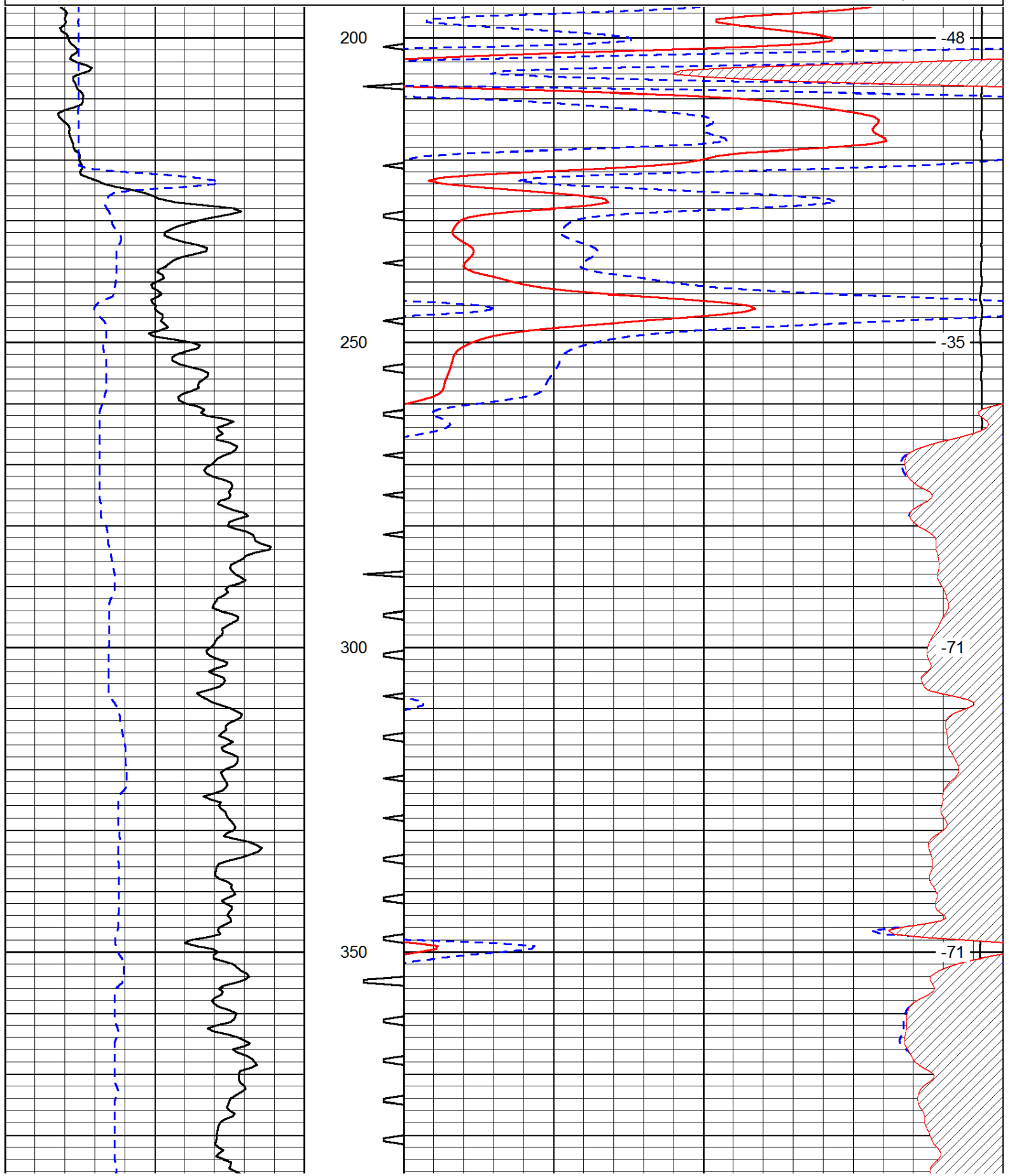
Thank you for using Log-Tech, Inc.
 (785) 625-3858

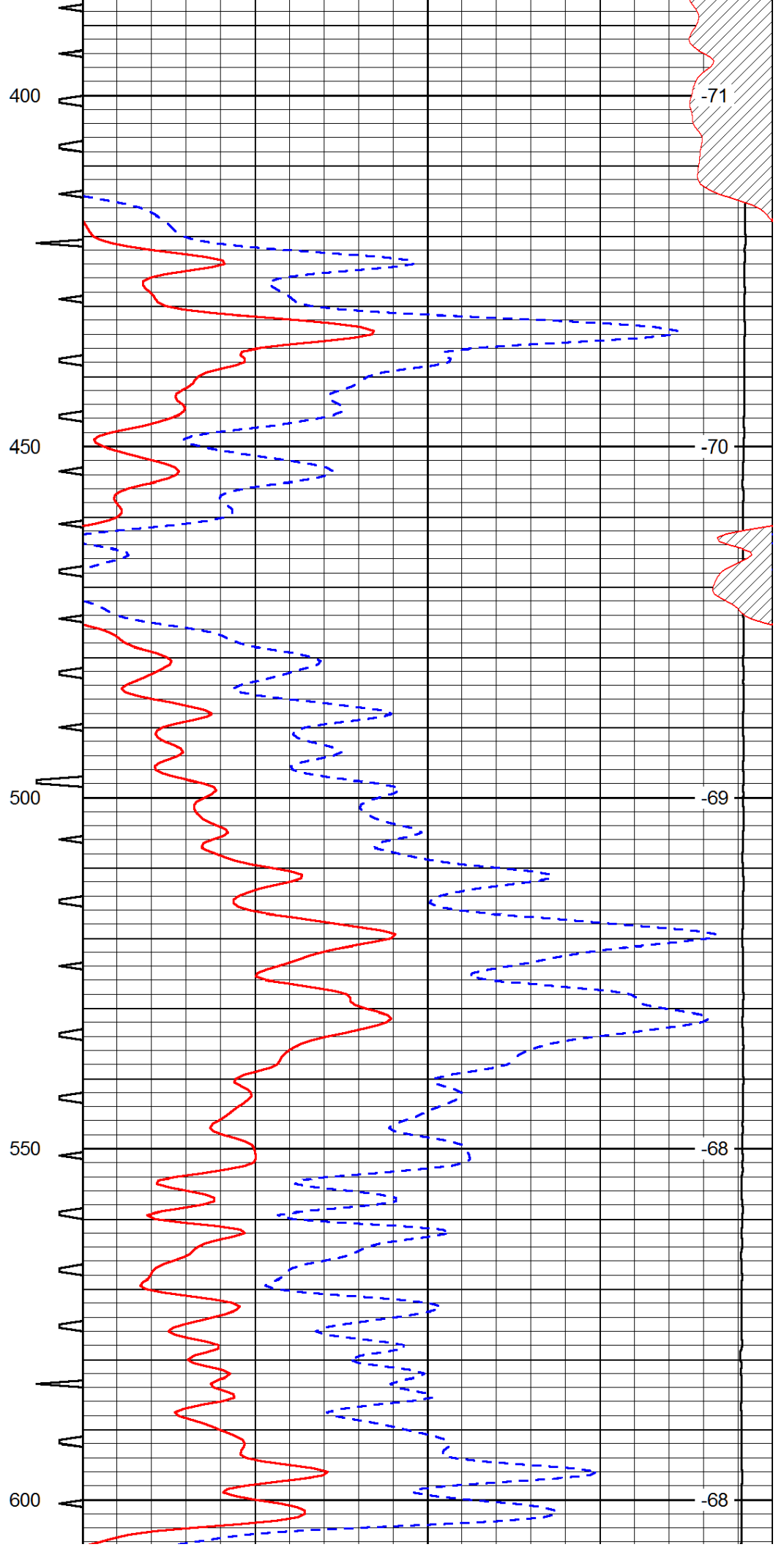
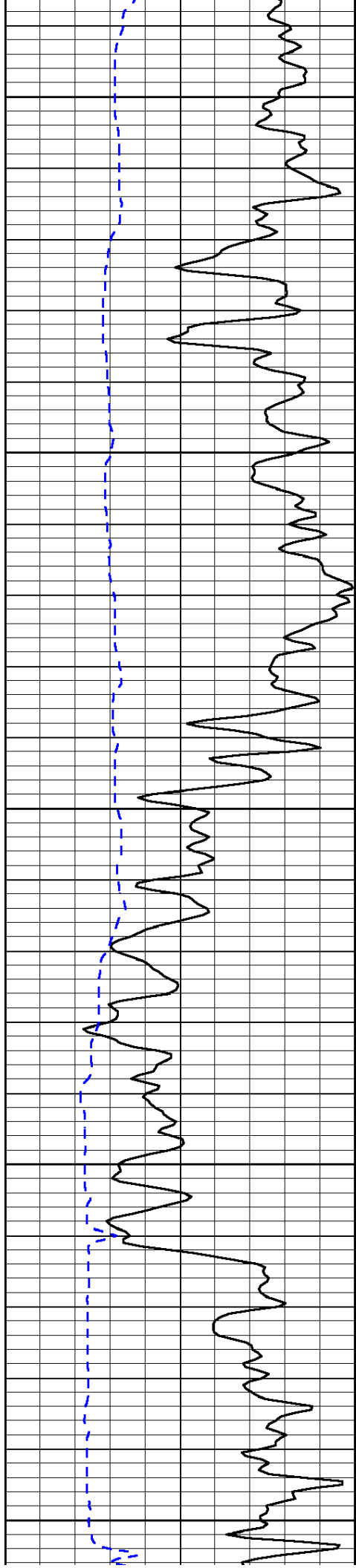
 Bogue, KS
 N to Hwy 24, 3 W to 320 Rd.,
 1/4 N, E Into

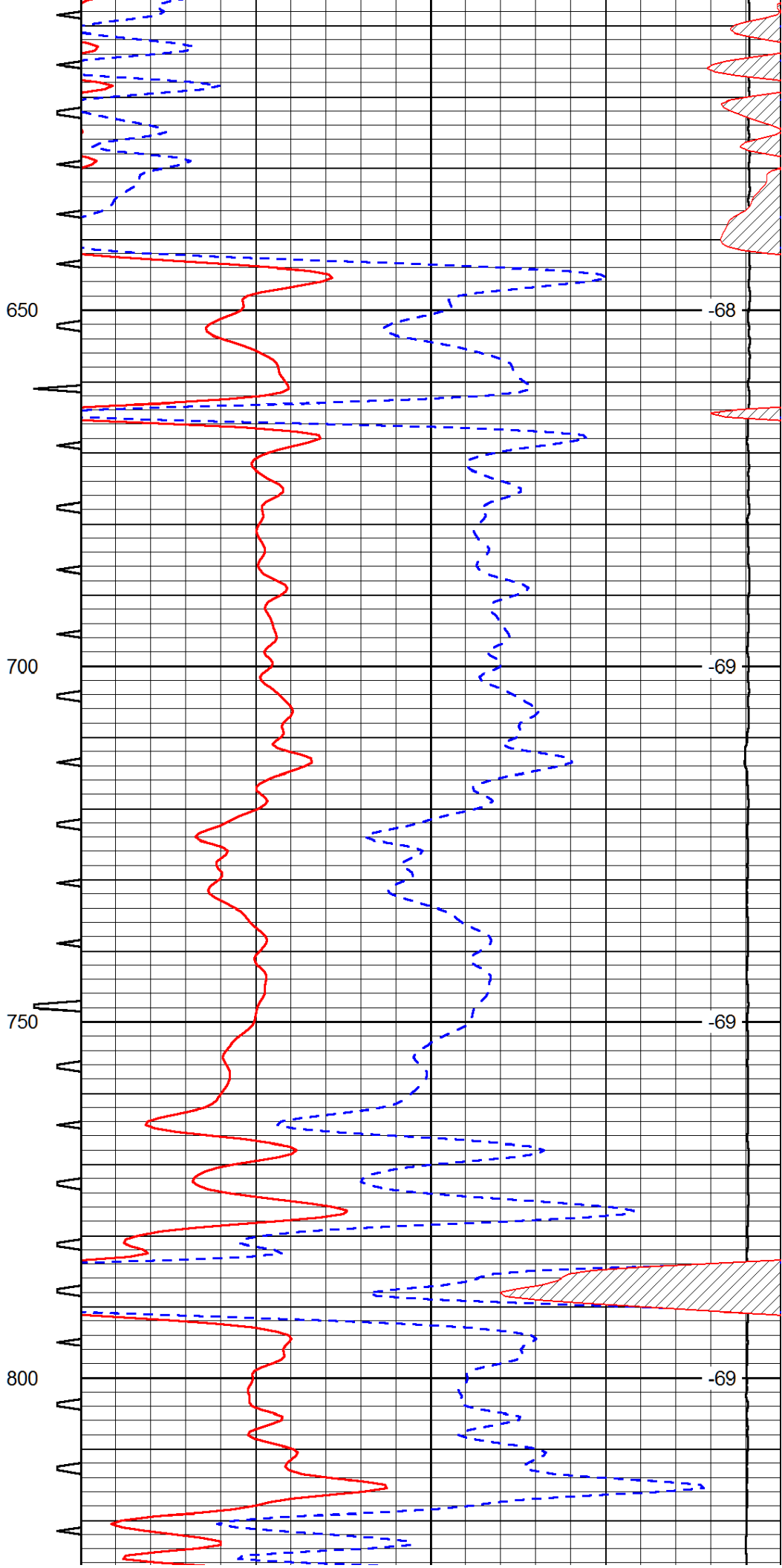
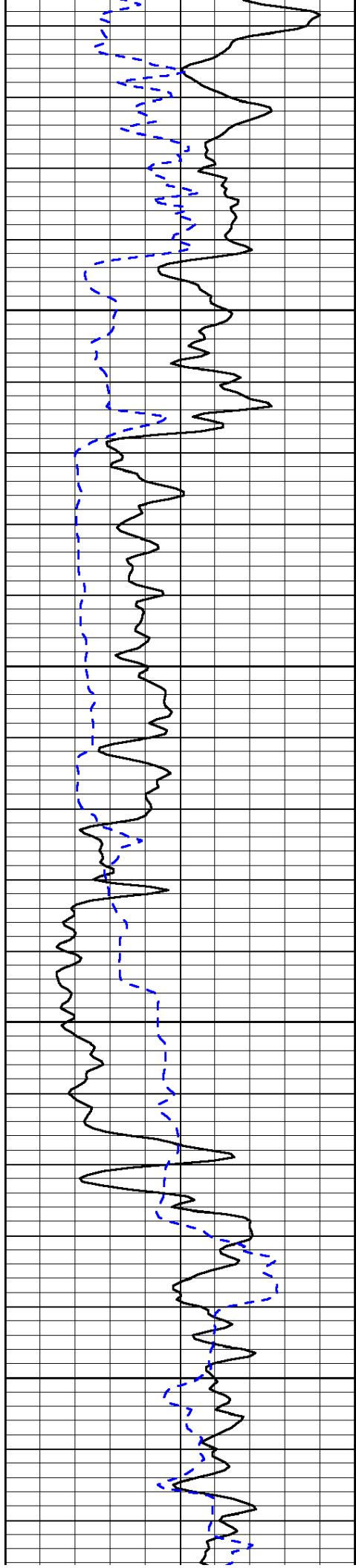
Database File: h&c_griffithunit_2-1hd.db
 Dataset Pathname: dil/h&cstk
 Presentation Format: sonic
 Dataset Creation: Fri Aug 16 10:55:21 2013
 Charted by: Depth in Feet scaled 1:240

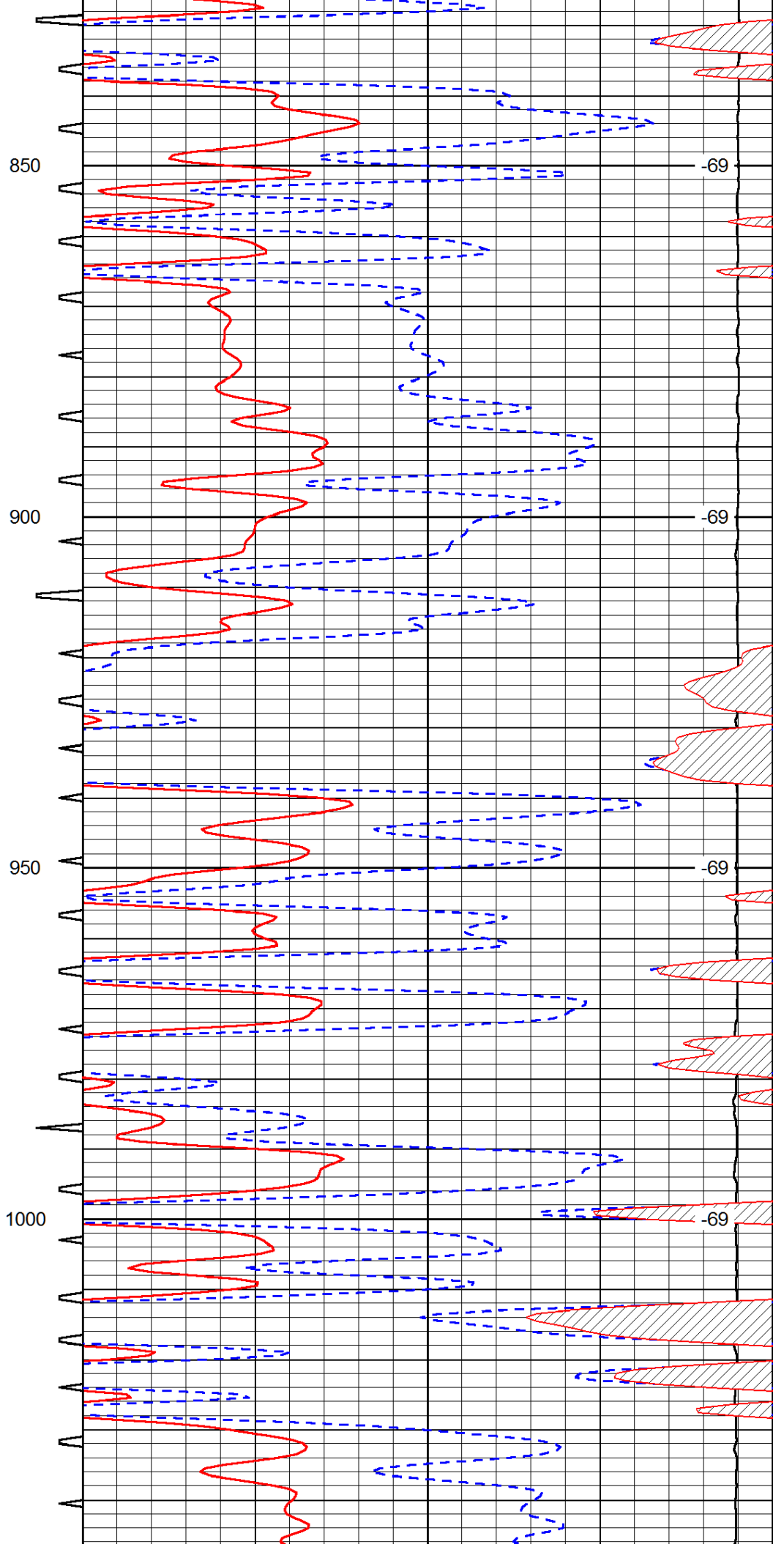
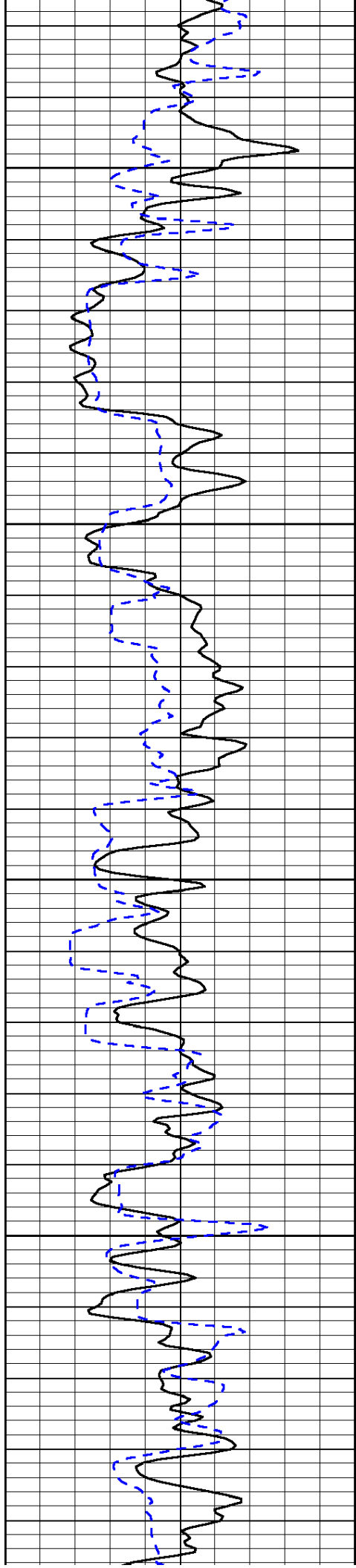
0	Gamma Ray (GAPI)	150	Sonic Int	140	Delta Time (usec/ft) (usec/ft)	40
150	Gamma Ray (GAPI)	300	5 (msec) 0	30	Sonic Porosity (pu)	-10
6	dCAL (in)	16		15000	LTEN (lb) (lb)	0

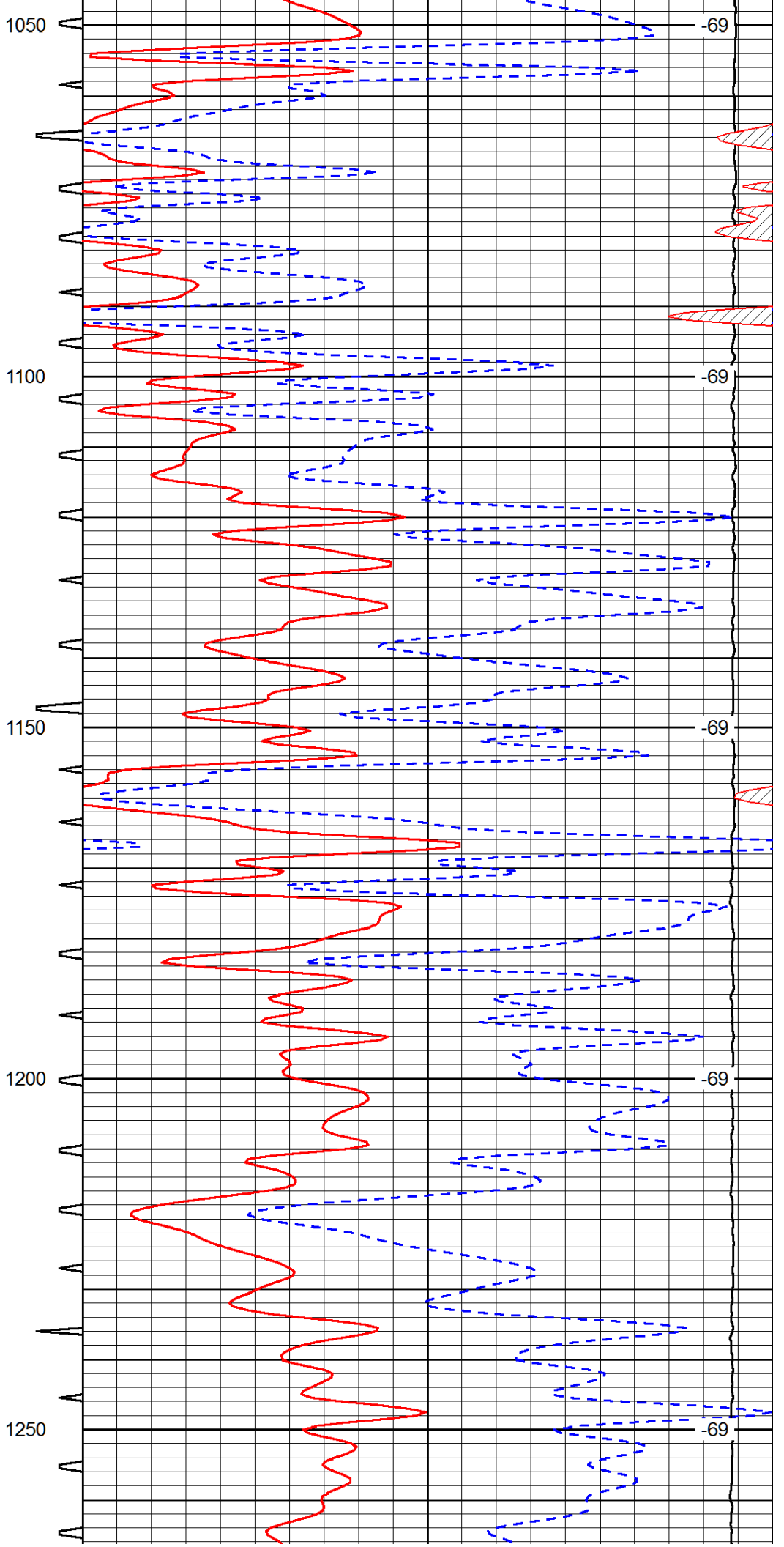
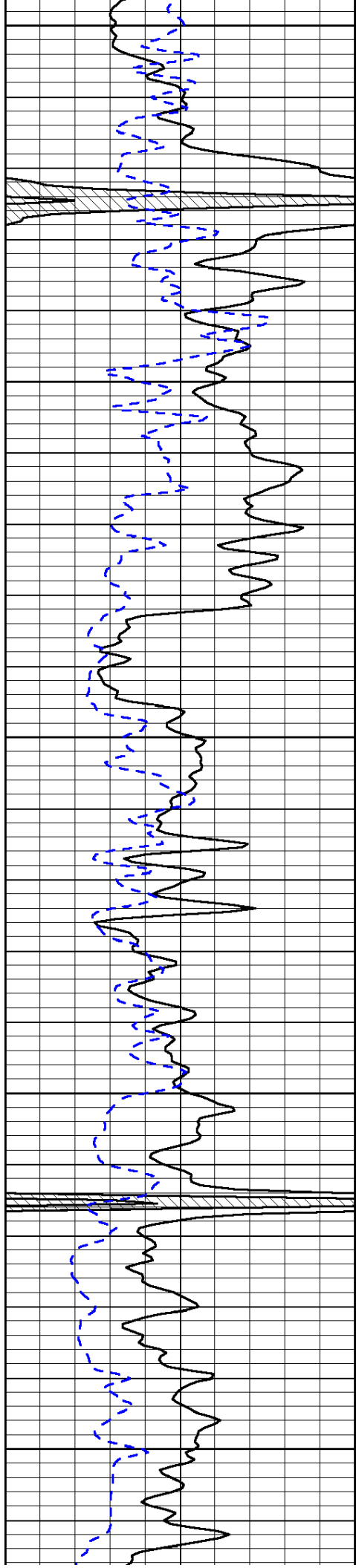
LSPD
(ft/min)

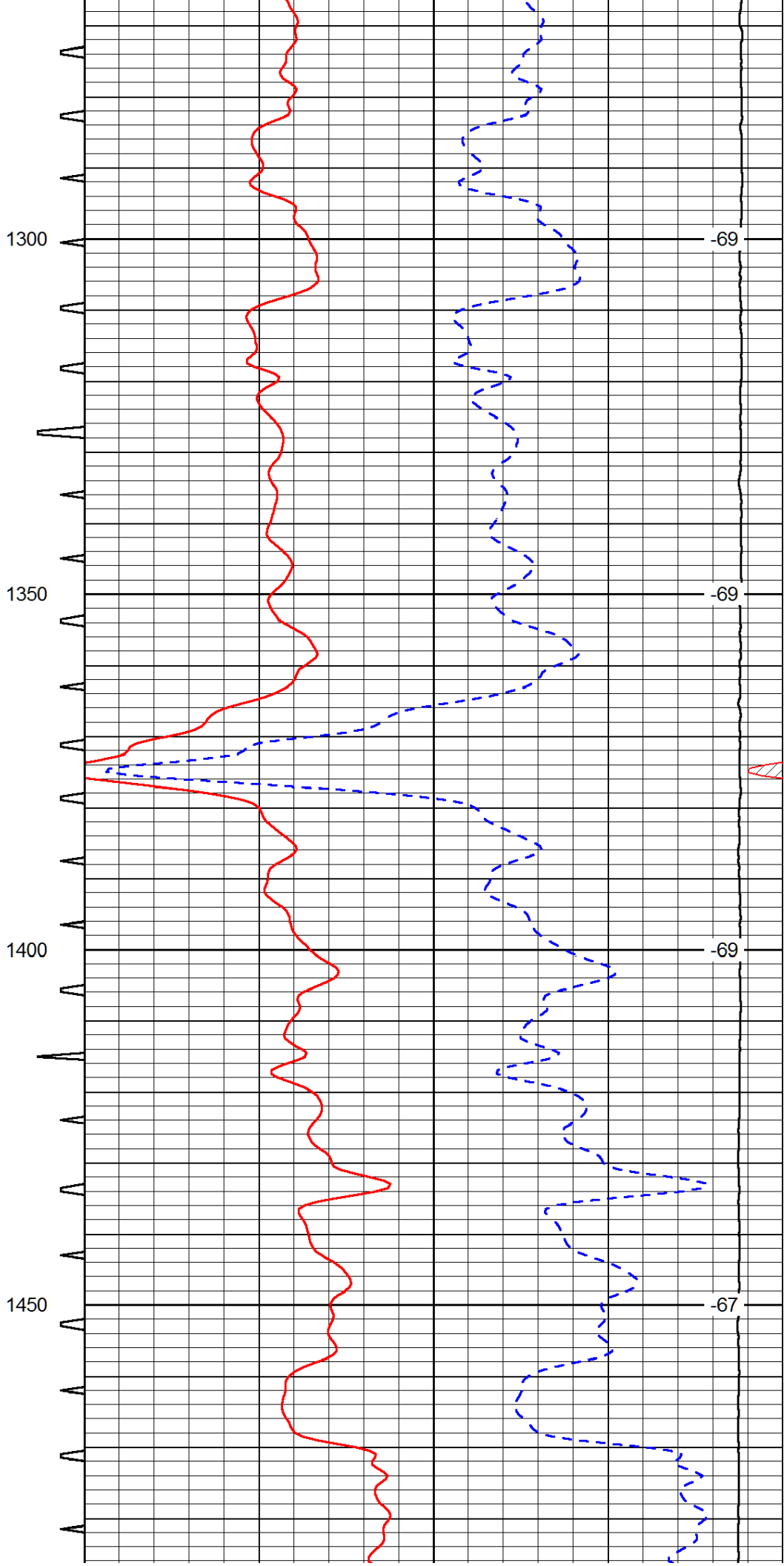
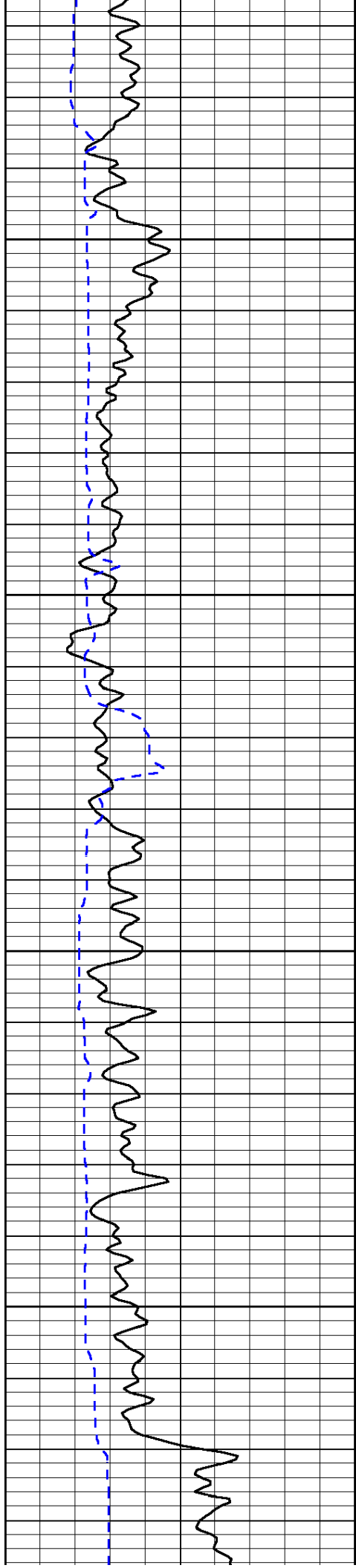


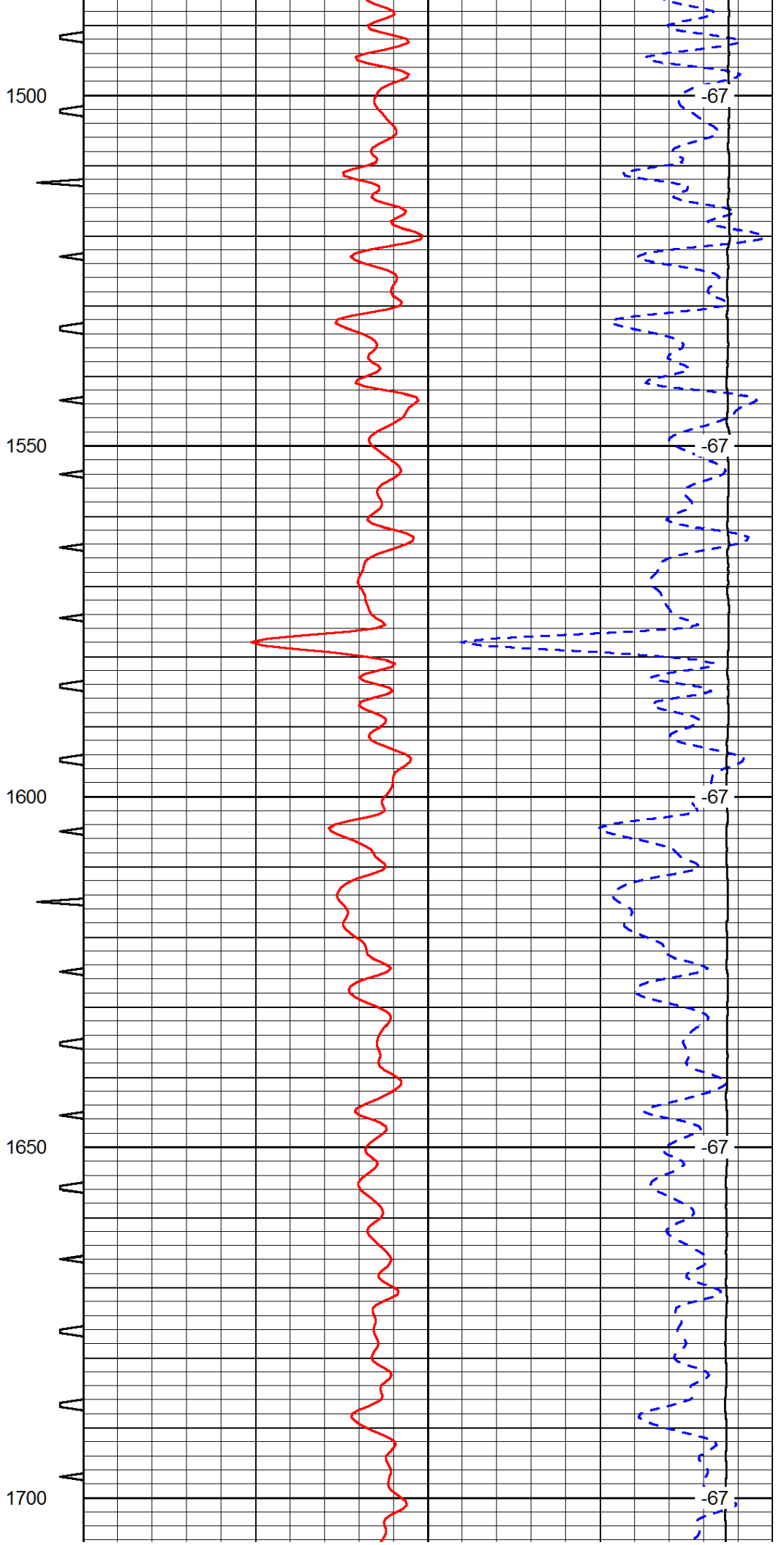
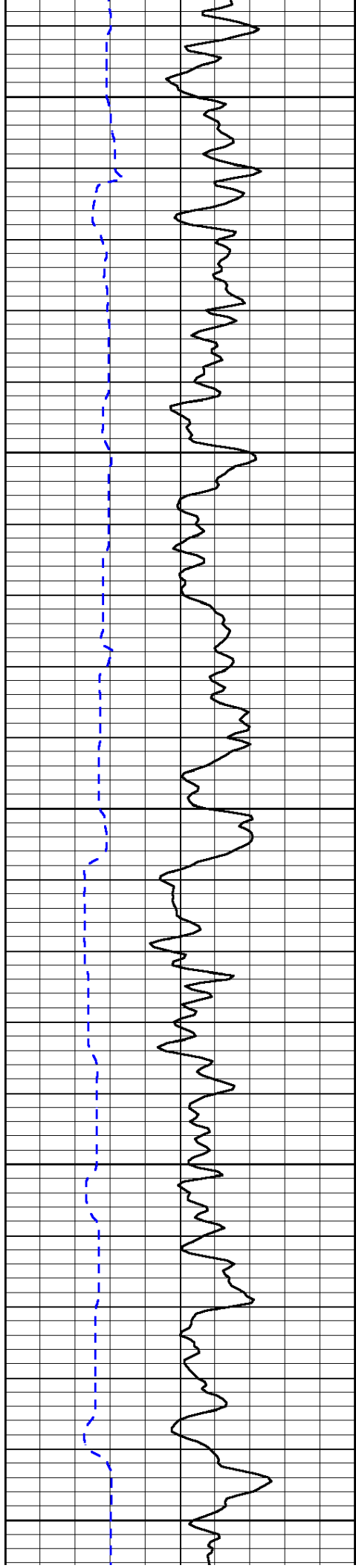


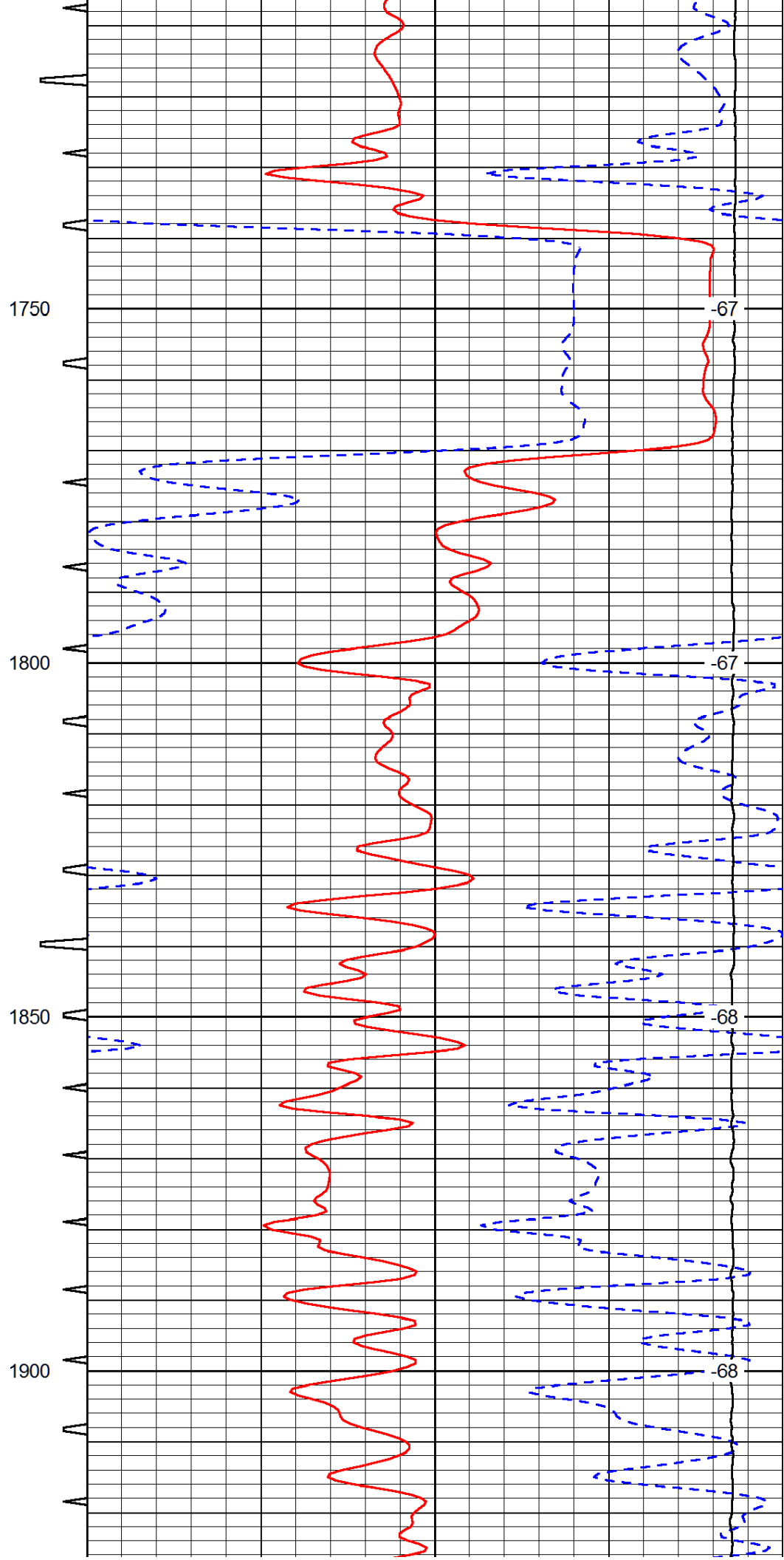
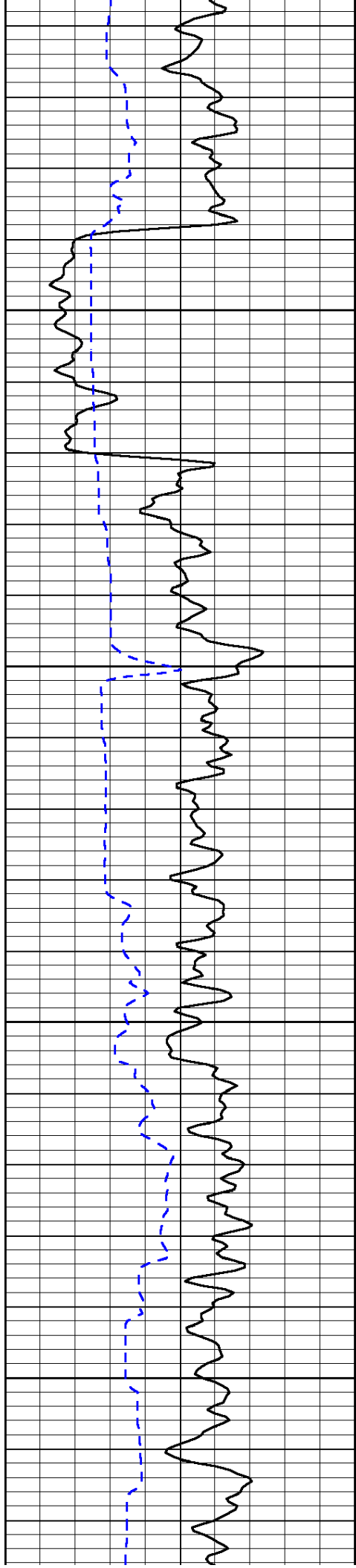


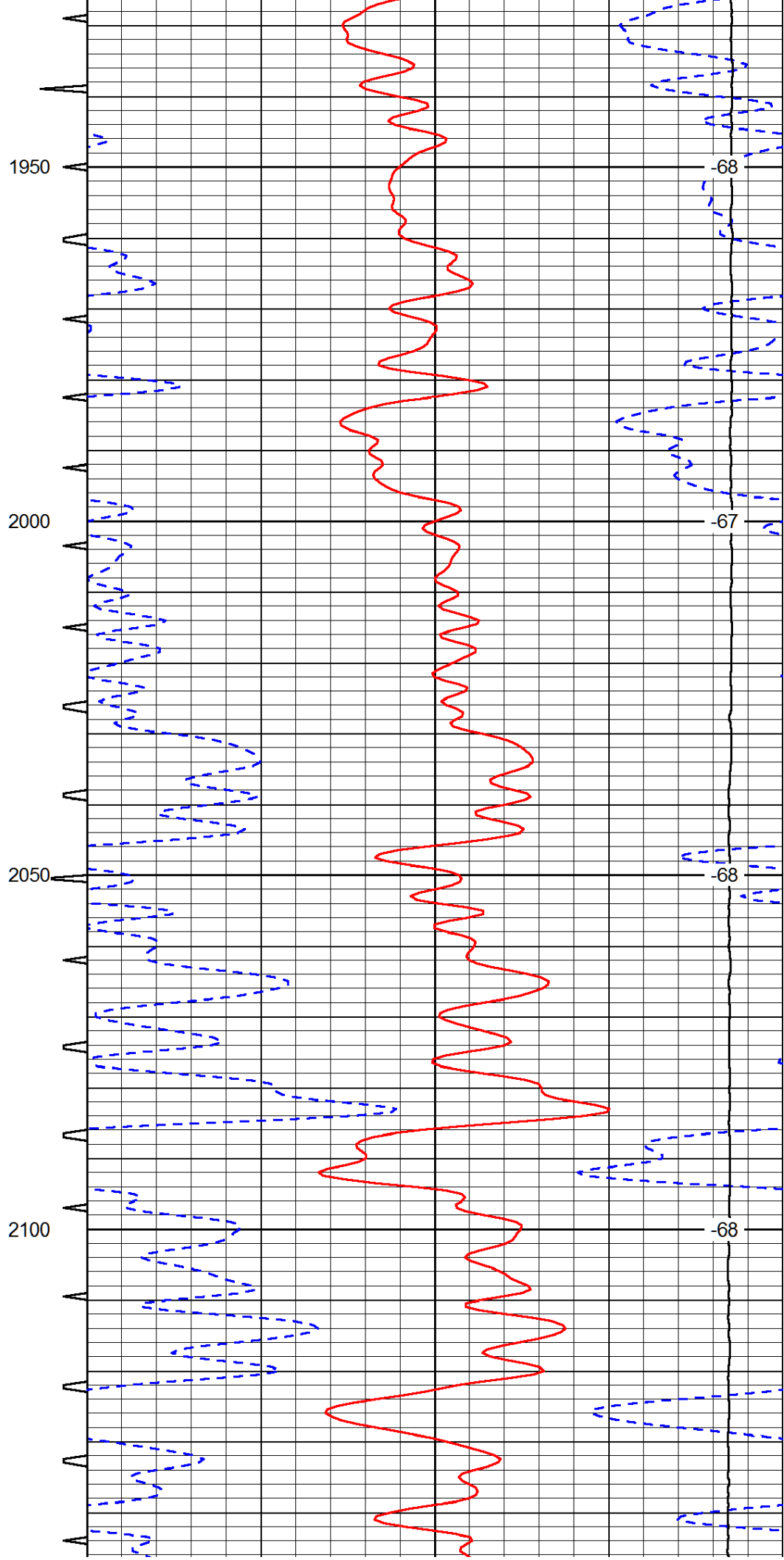
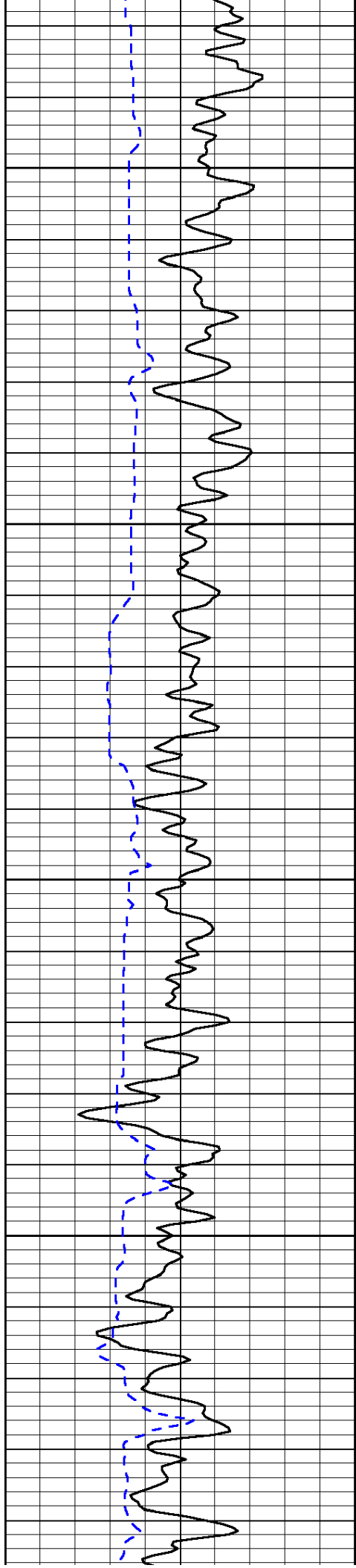


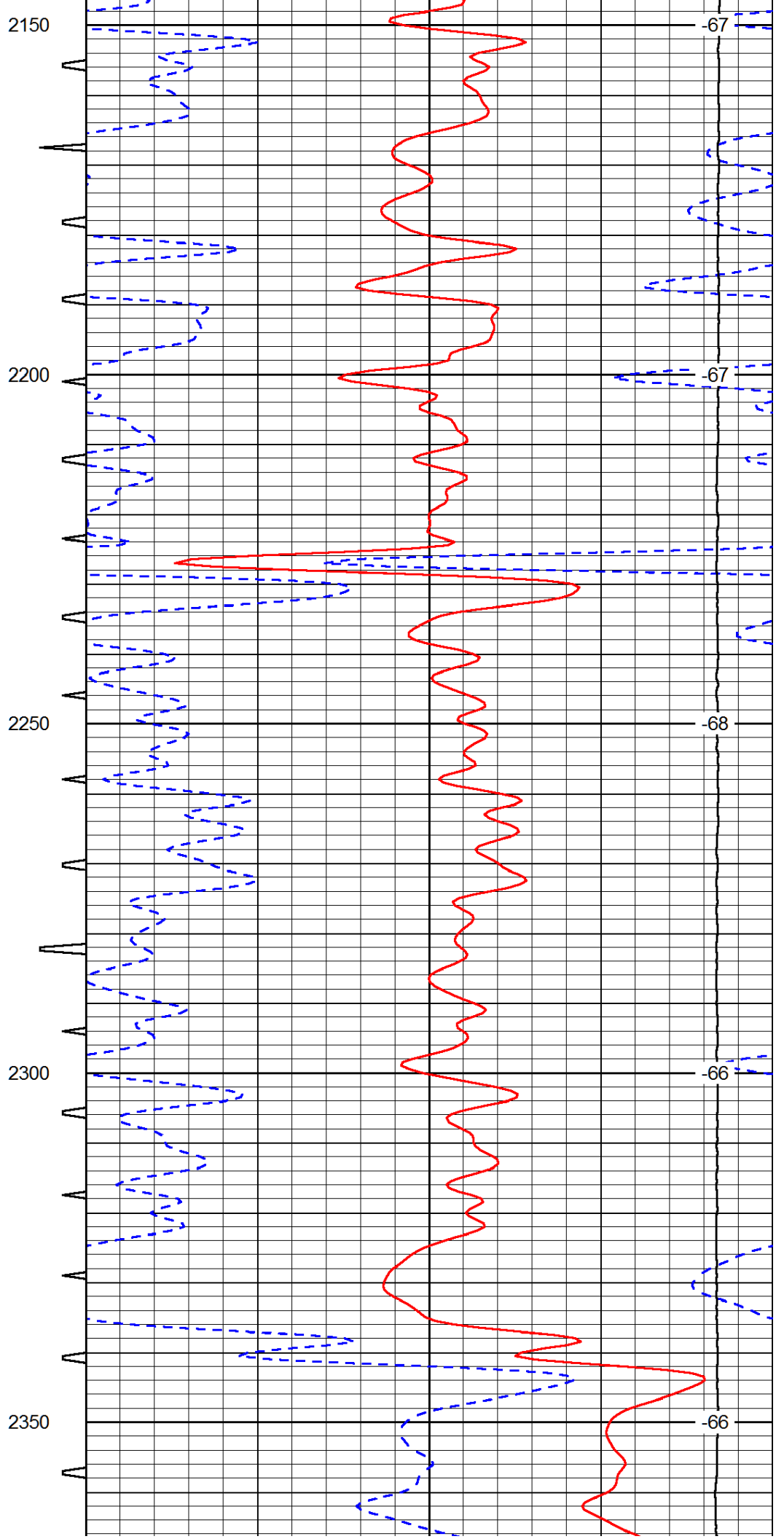
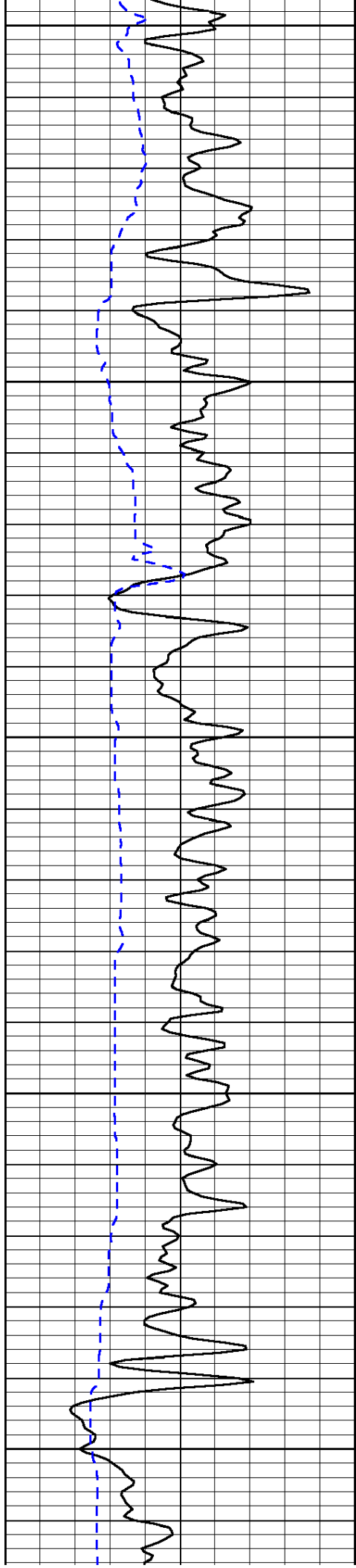


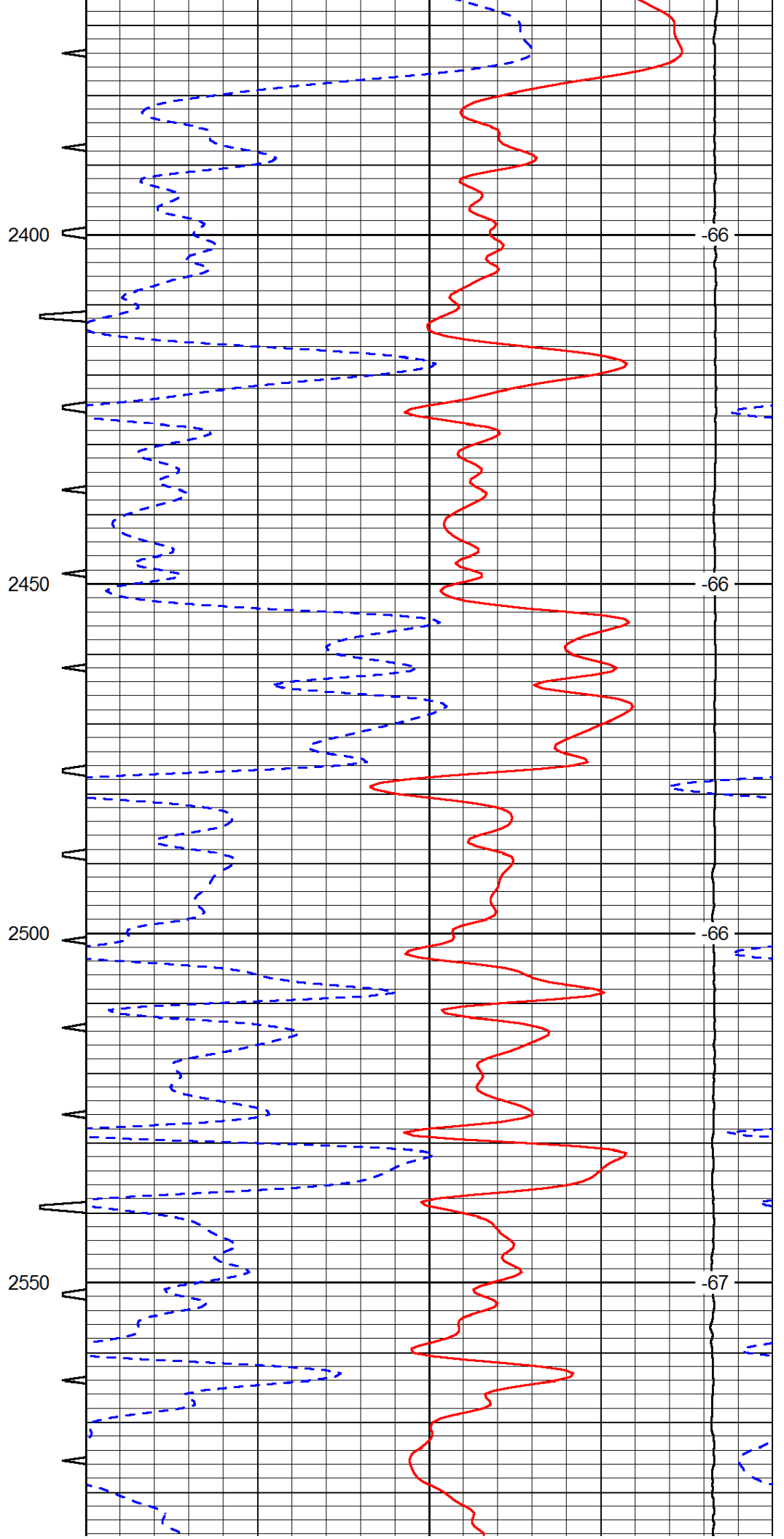
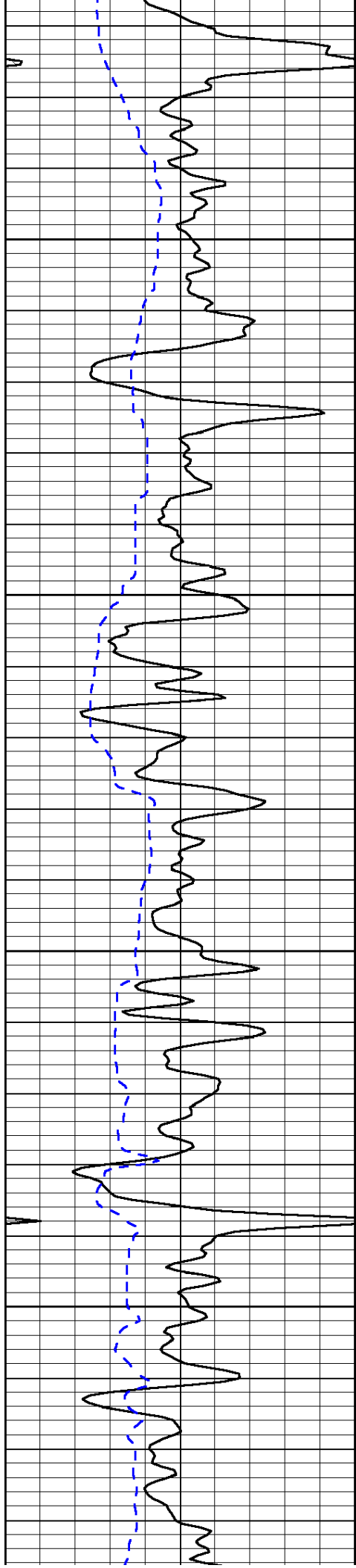


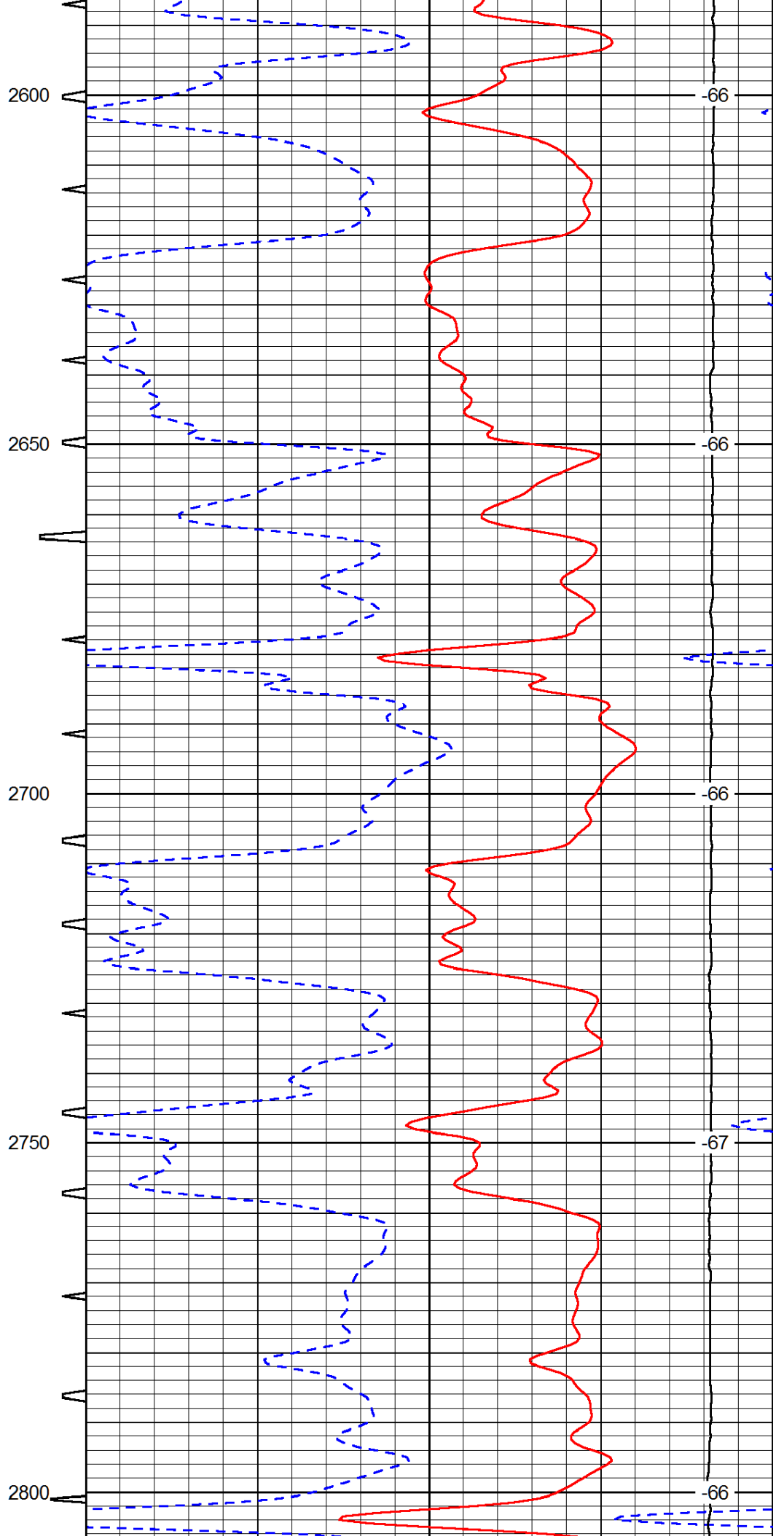
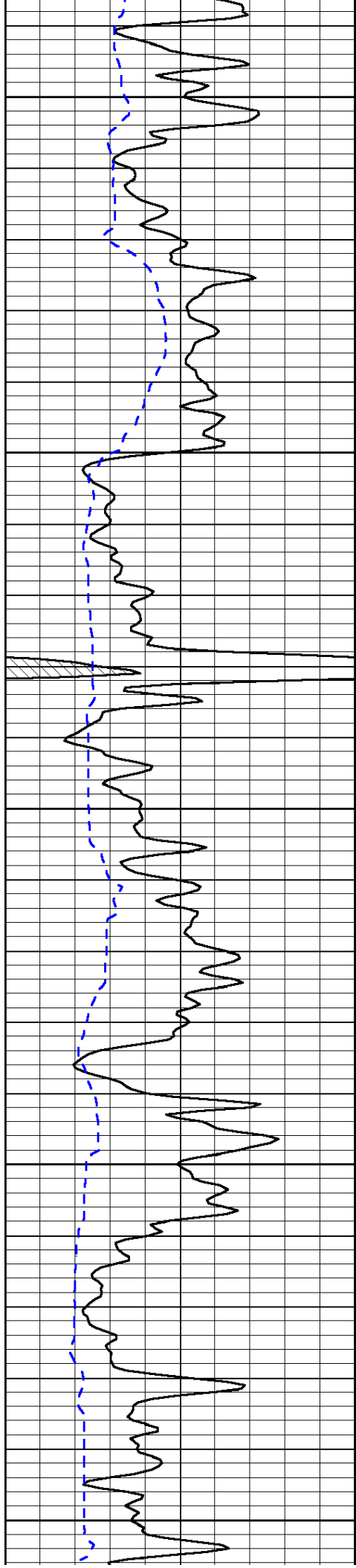


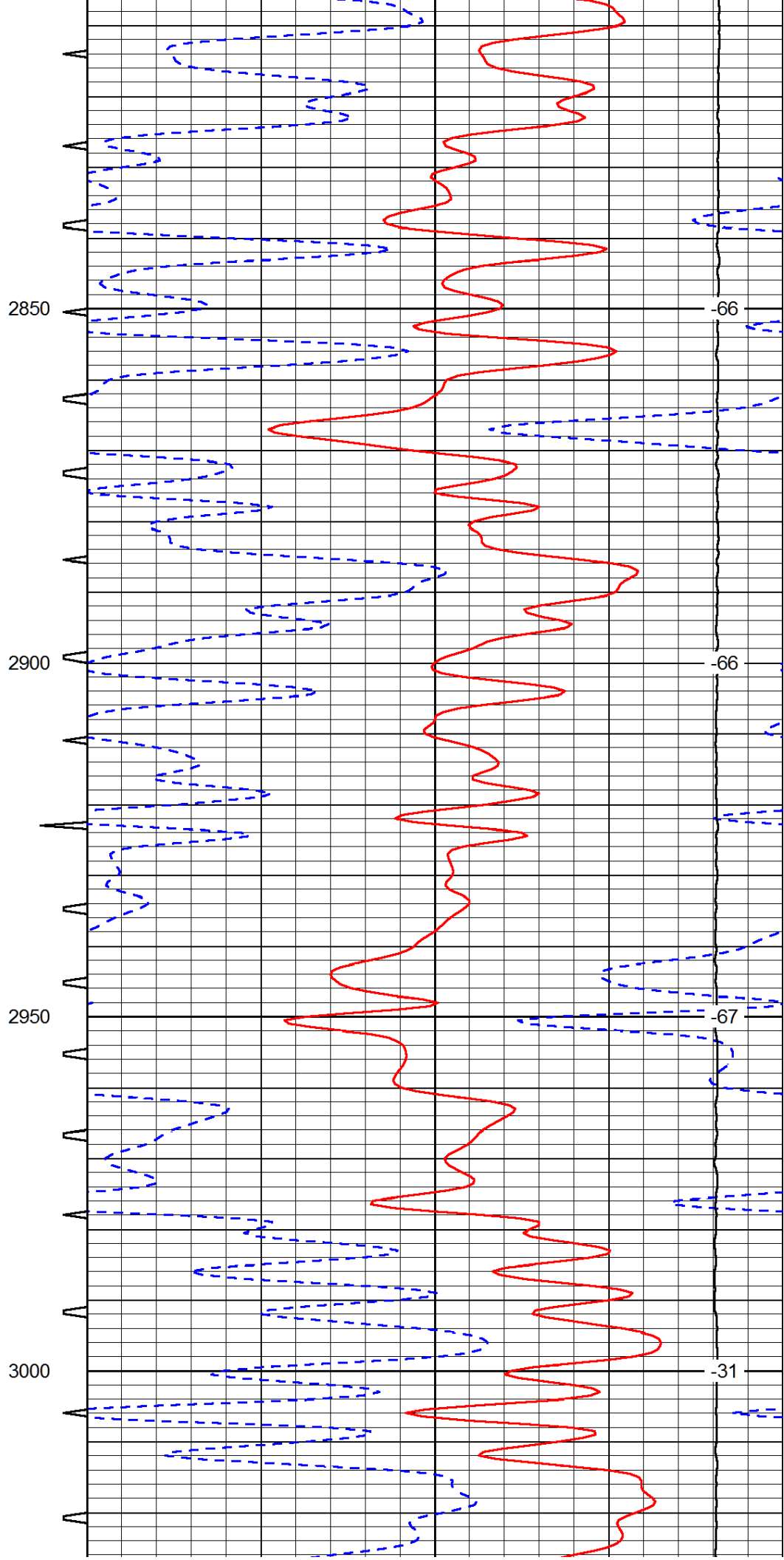
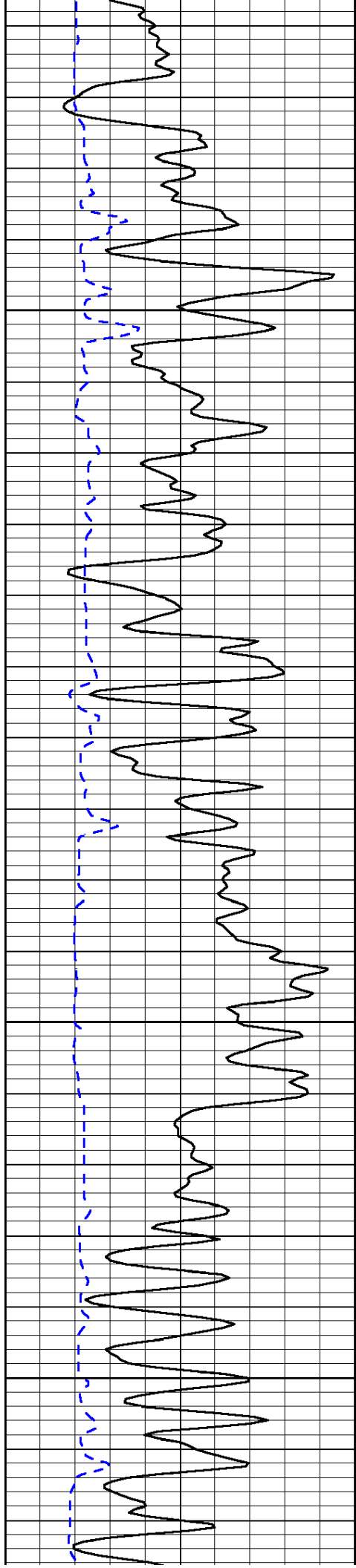


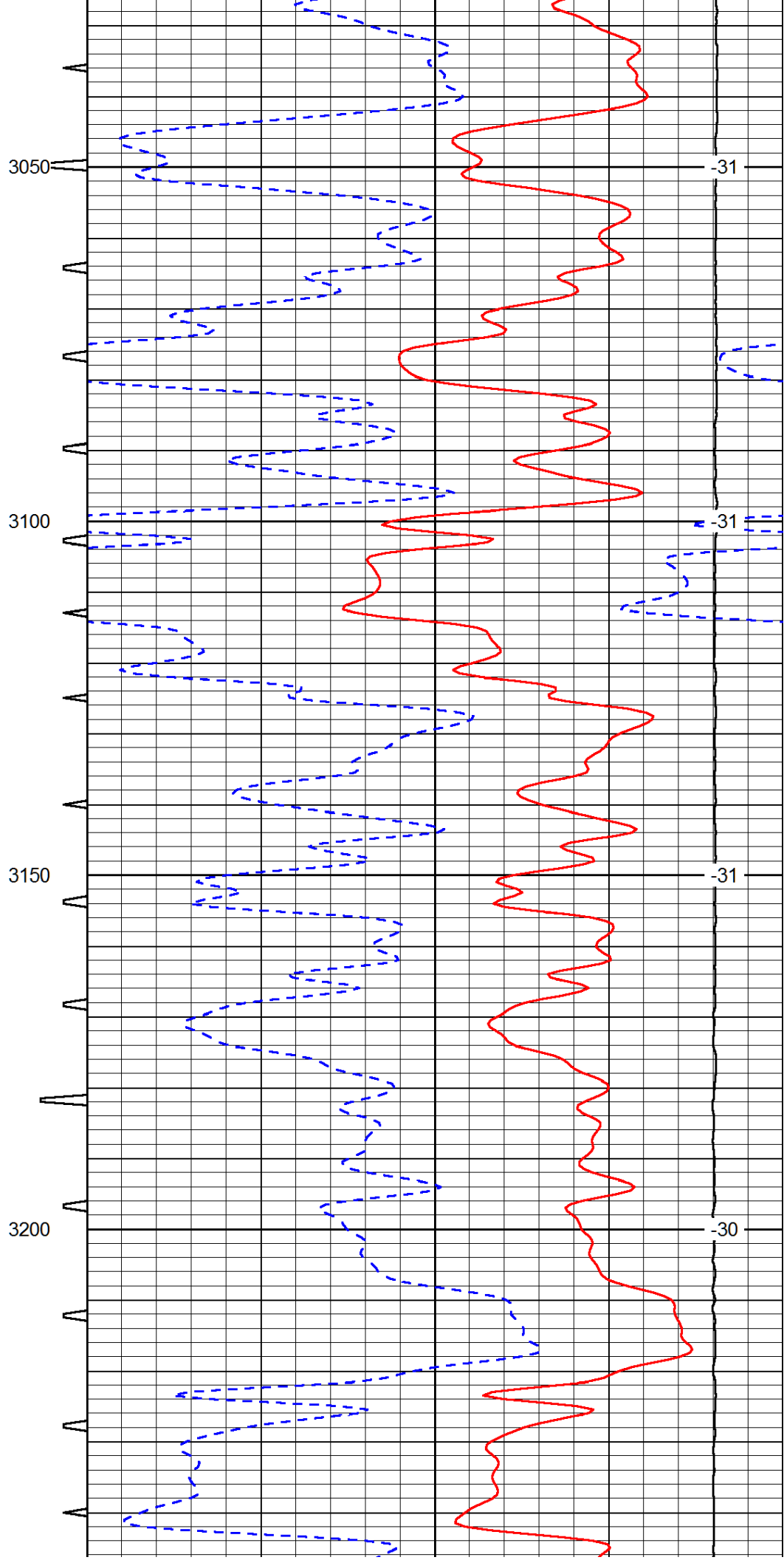
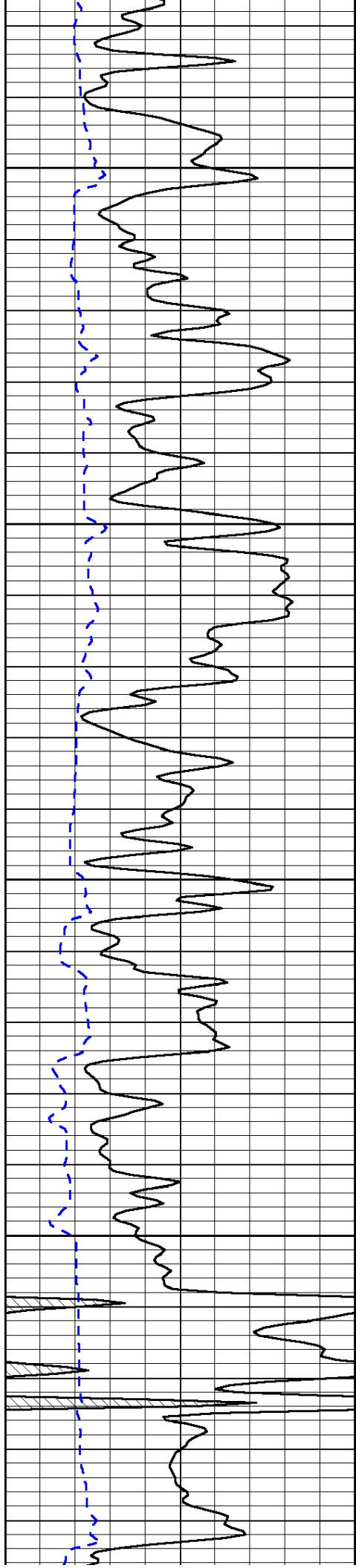


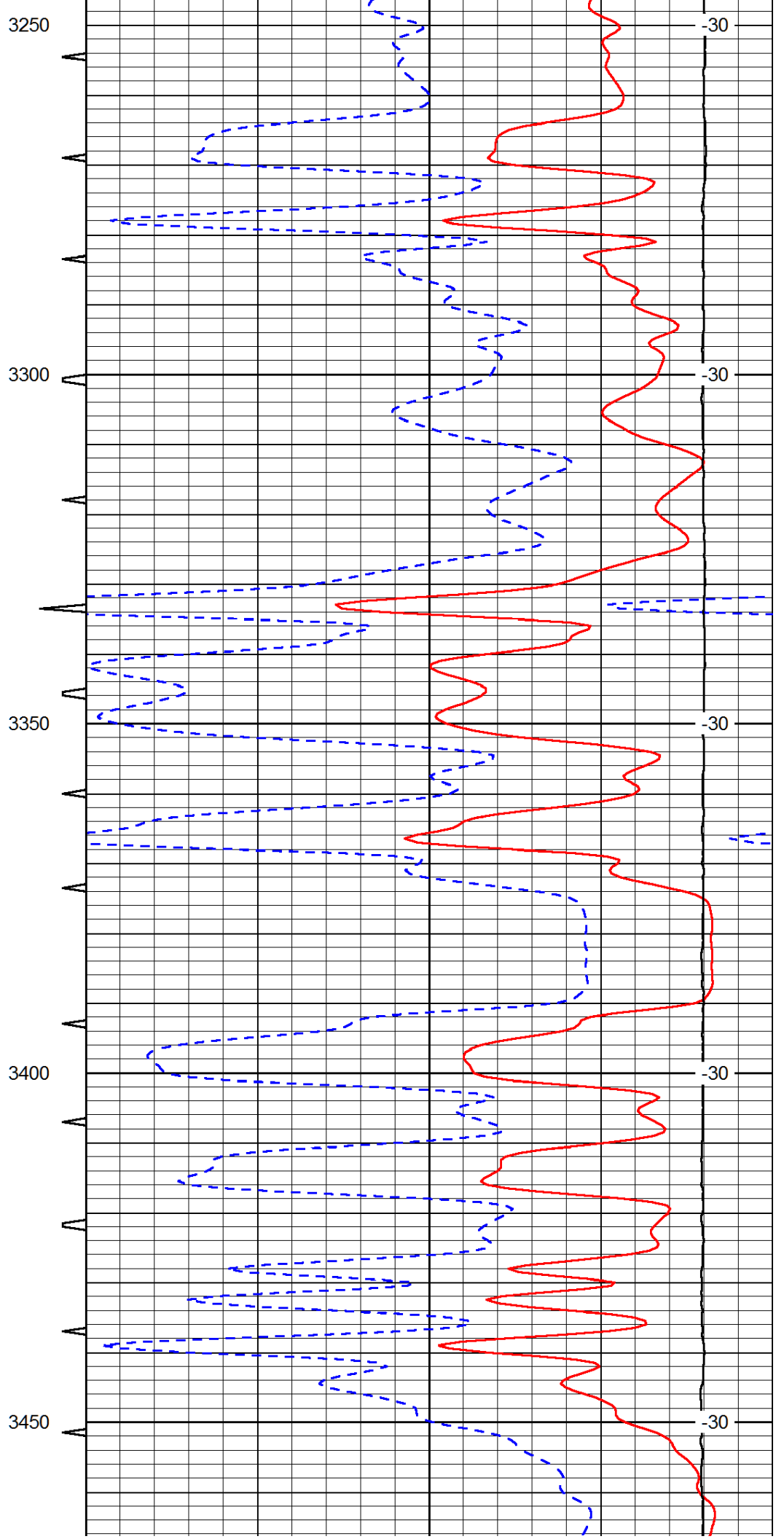
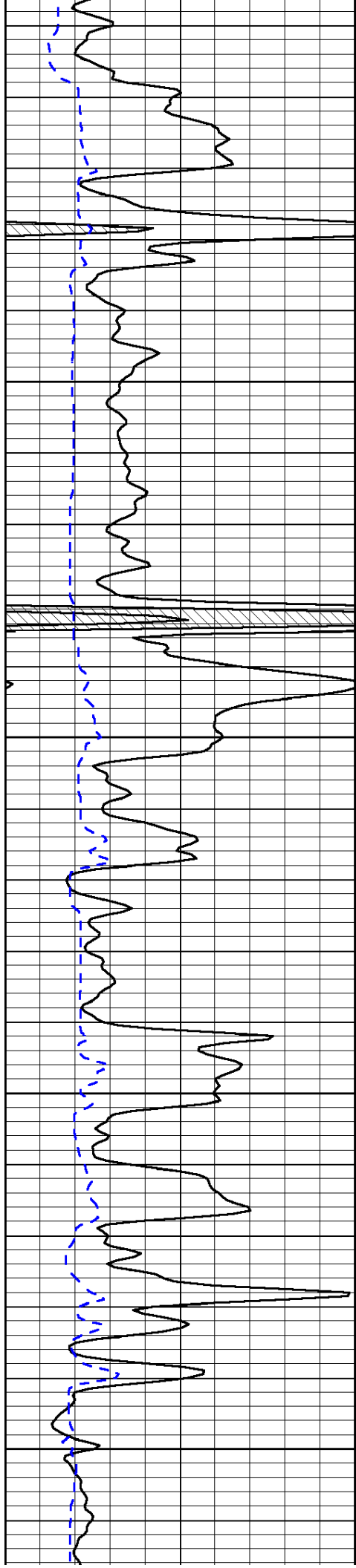


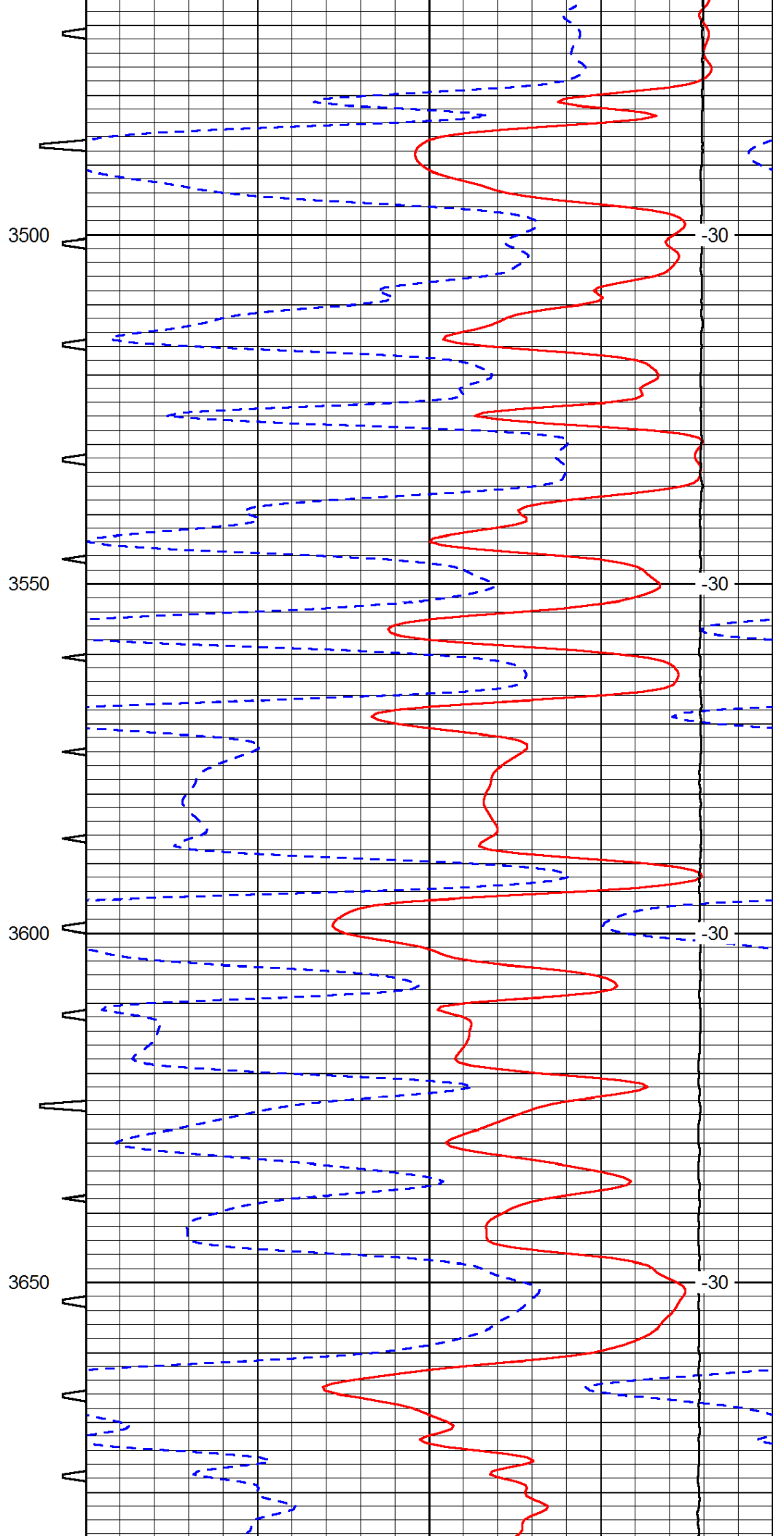
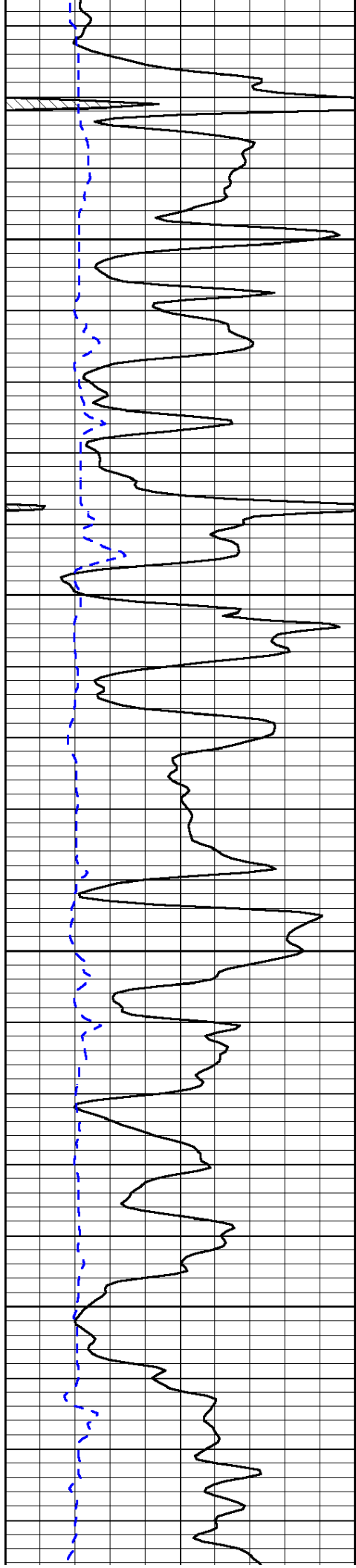


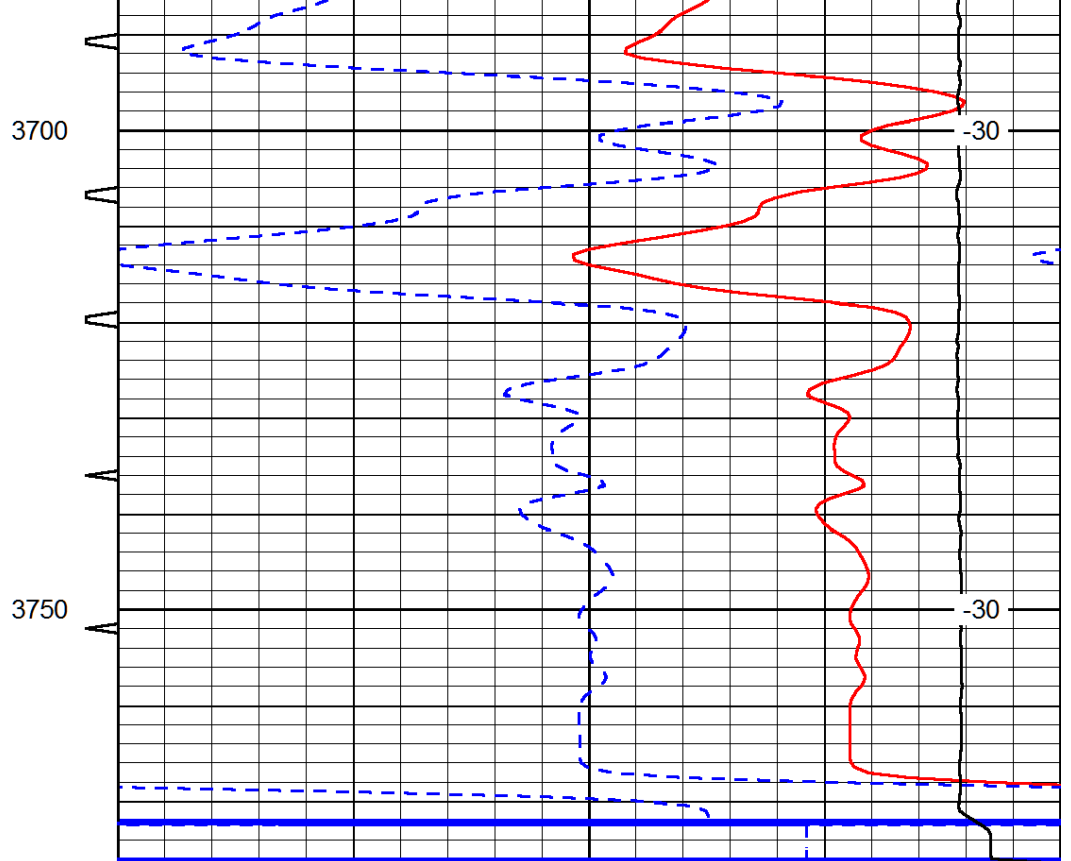
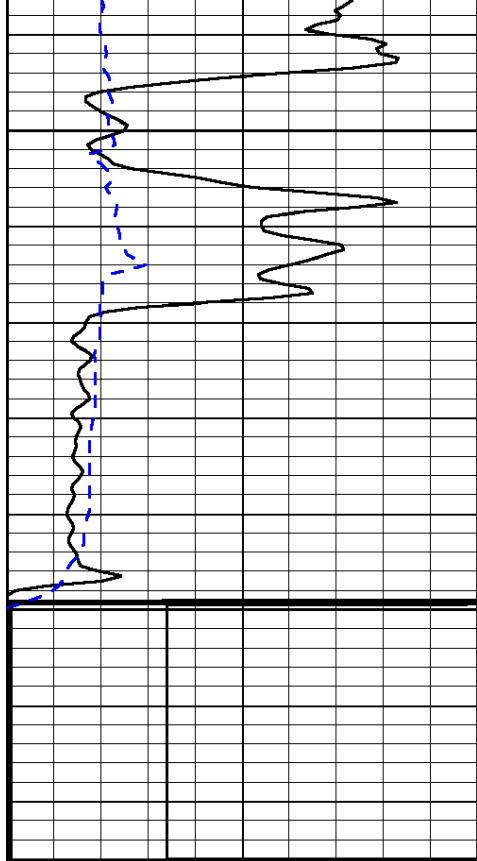












0	Gamma Ray (GAPI)	150	Sonic Int	140	Delta Time (usec/ft) (usec/ft)	40
150	Gamma Ray (GAPI)	300	5 (msec) 0	30	Sonic Porosity (pu)	-10
6	dCAL (in)	16		15000	LTEN (lb) (lb)	0
						LSPD (ft/min)