



Pioneer Energy Services

Microresistivity Log

15-065-23,965-00-00

API No.	Company H & C Oil Operating, Inc.		
	Well Griffith Unit No. 2 - 1		
	Field Wildcat	County Graham	State Kansas
	Location 990' FSL & 100' FWL		
	Sec: 2	Twp: 8 S	Rge: 22 W
Permanent Datum	Ground Level	Elevation 2139	
Log Measured From	Kelly Bushing	8 Ft. Above Perm. Datum	
Drilling Measured From	Kelly Bushing	K.B. 2147 D.F. 2139 G.L. 2139	
Date	8/16/2013		
Run Number	Two		
Depth Driller	3770		
Depth Logger	3771		
Bottom Logged Interval	3770		
Top Log Interval	3000		
Casing Driller	8.625 @ 220		
Casing Logger	220		
Bit Size	7.875		
Type Fluid in Hole	Chemical		
Salinity, ppm CL	400		
Density / Viscosity	9.0	58	
pH / Fluid Loss	10.5	8.0	
Source of Sample	Flowline		
Rm @ Meas. Temp	.82	@ 72	
Rmf @ Meas. Temp	.62	@ 72	
Rmc @ Meas. Temp	1.11	@ 72	
Source of Rmf / Rmc	Charts		
Rm @ BHT	.52	@ 114	
Operating Rig Time	5 Hours		
Max Rec. Temp. F	114		
Equipment Number	108		
Location	Hays		
Recorded By	D. Martin		
Witnessed By	Marc Downing		

<<< Fold Here >>>

All interpretations are opinions based on inferences from electrical or other measurements and we cannot and do not guarantee the accuracy or correctness of any interpretation, and we shall not, except in the case of gross or willful negligence on our part, be liable or responsible for any loss, costs, damages, or expenses incurred or sustained by anyone resulting from any interpretation made by any of our officers, agents or employees. These interpretations are also subject to our general terms and conditions set out in our current Price Schedule.

Comments

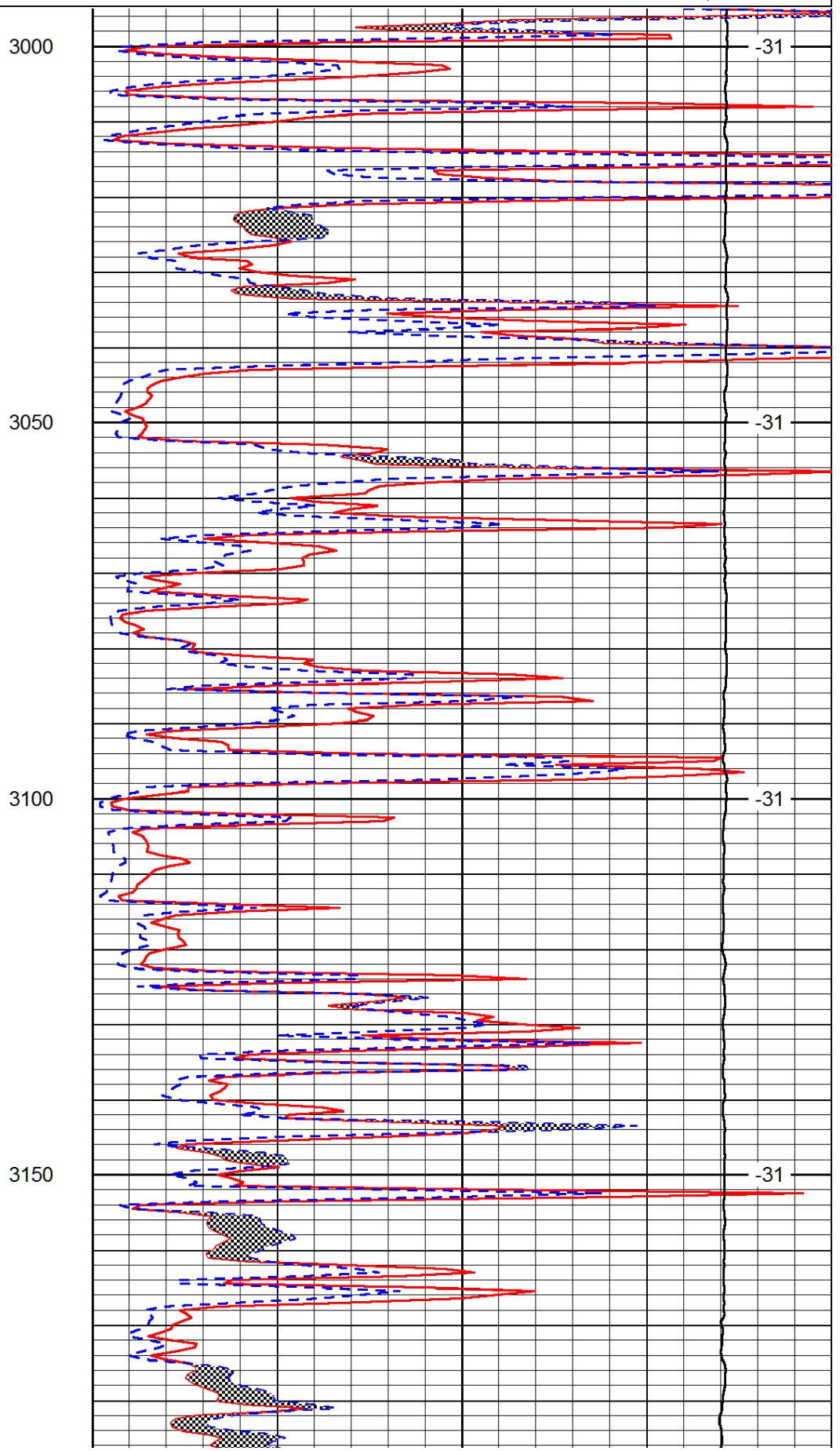
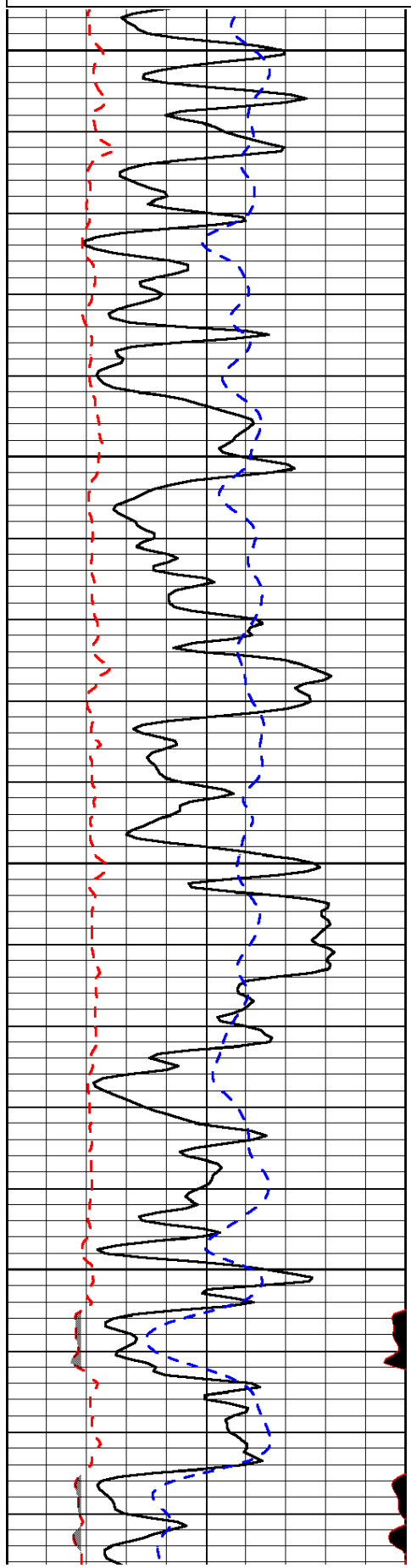
Thank you for using Log-Tech, Inc.
 (785) 625-3858
 Bogue, KS
 N to Hwy 24, 3 W to 320 Rd.,
 1/4 N, E Into

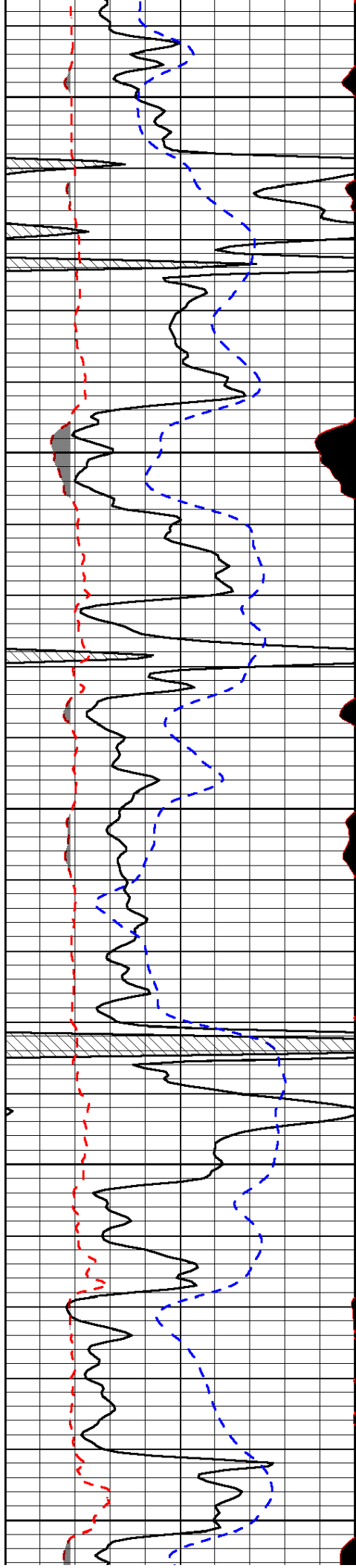
Database File: h&c_griffithunit_2-1hd.db
 Dataset Pathname: dil/h&cstk
 Presentation Format: micro
 Dataset Creation: Fri Aug 16 10:55:21 2013
 Charted by: Depth in Feet scaled 1:240

0	Gamma Ray (GAPI)	150
6	MCAL (in)	16
2.875	Mud Cake (in)	7.875
-200	SP (mV)	0

0	Micro Inverse 1 X 1 (Ohm-m)	40
0	Micro Normal 2" (Ohm-m)	40
10000	Line Weight (lb)	0

LSPD
(ft/min)





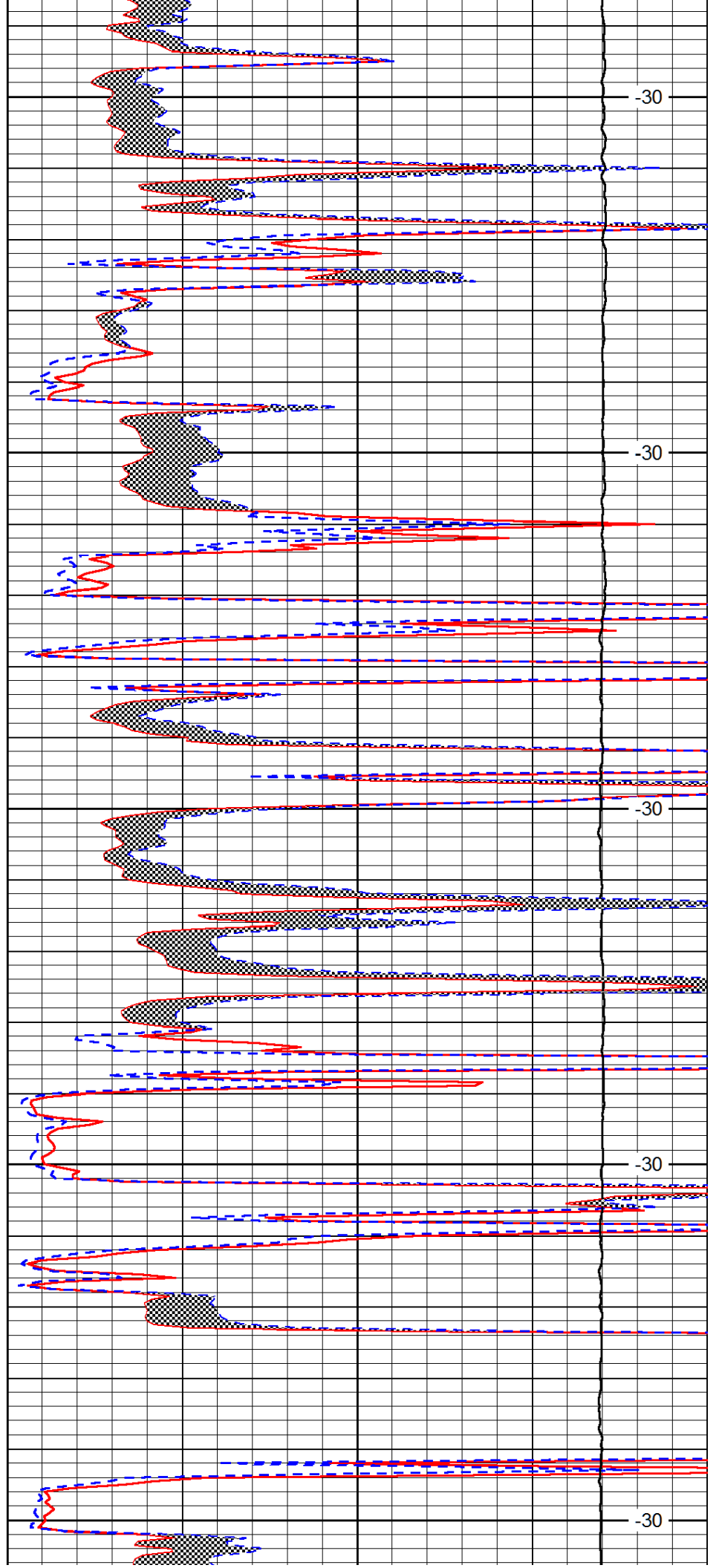
3200

3250

3300

3350

3400



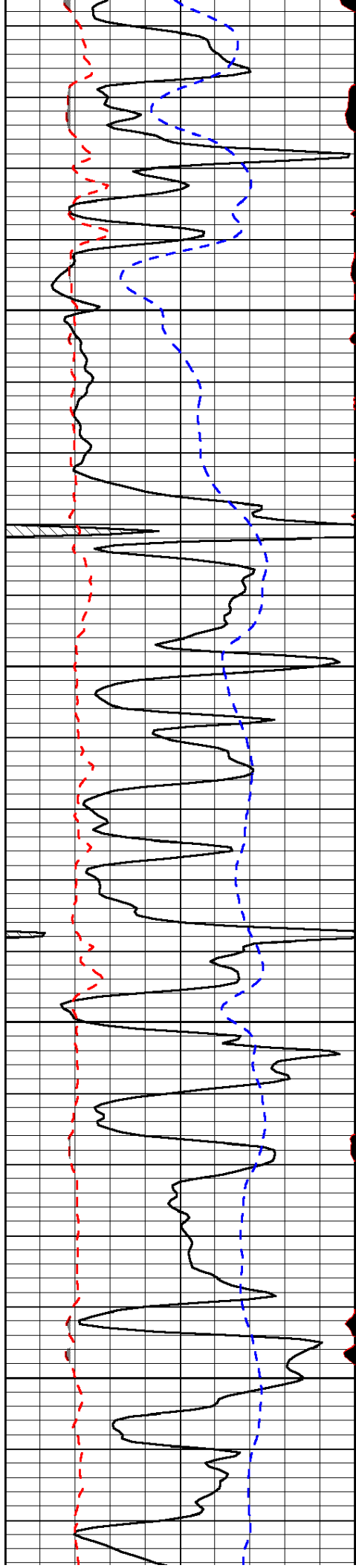
-30

-30

-30

-30

-30

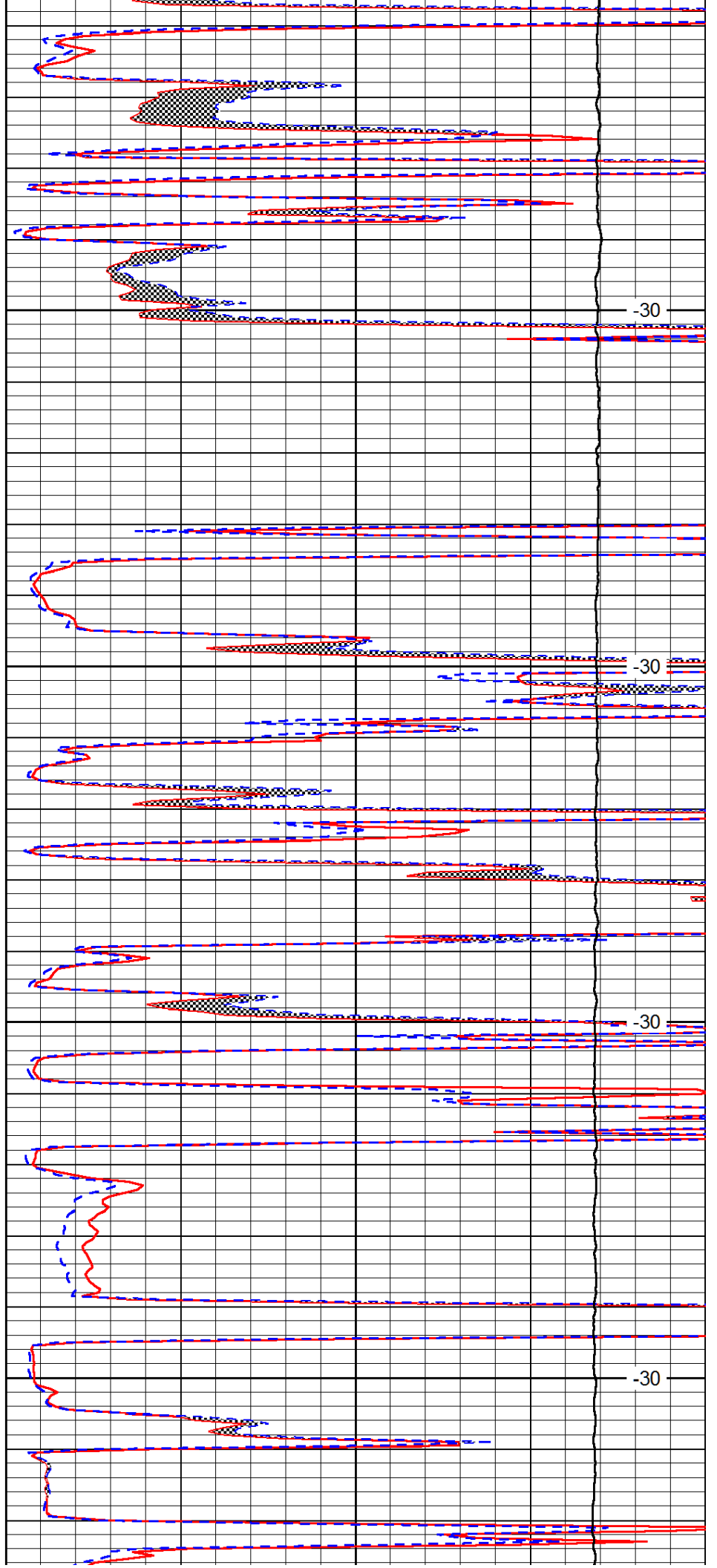


3450

3500

3550

3600

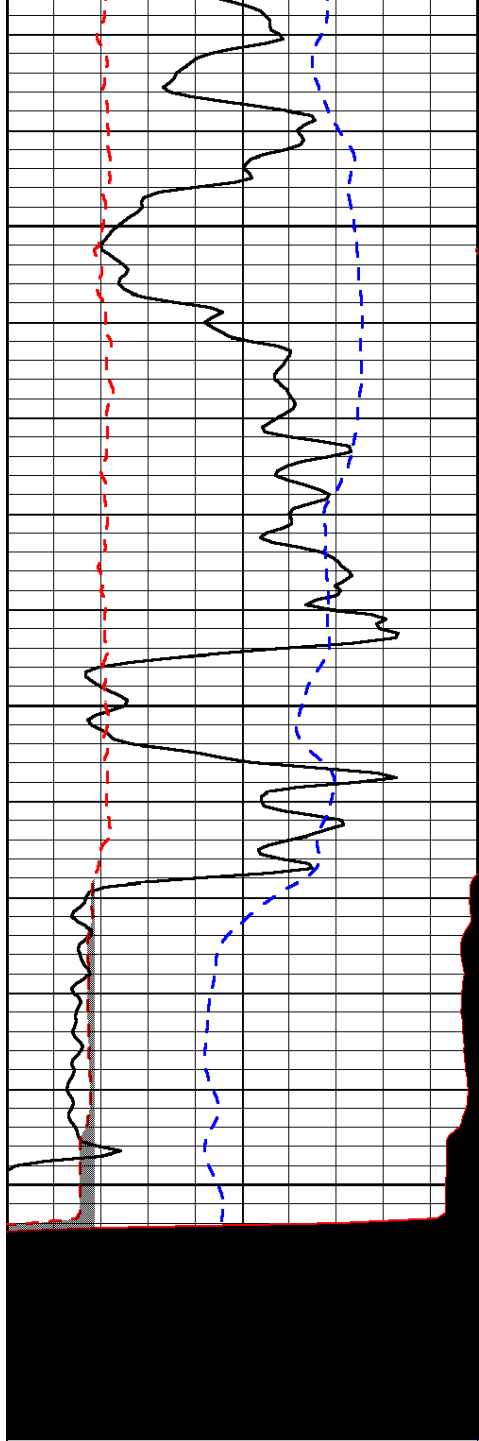


-30

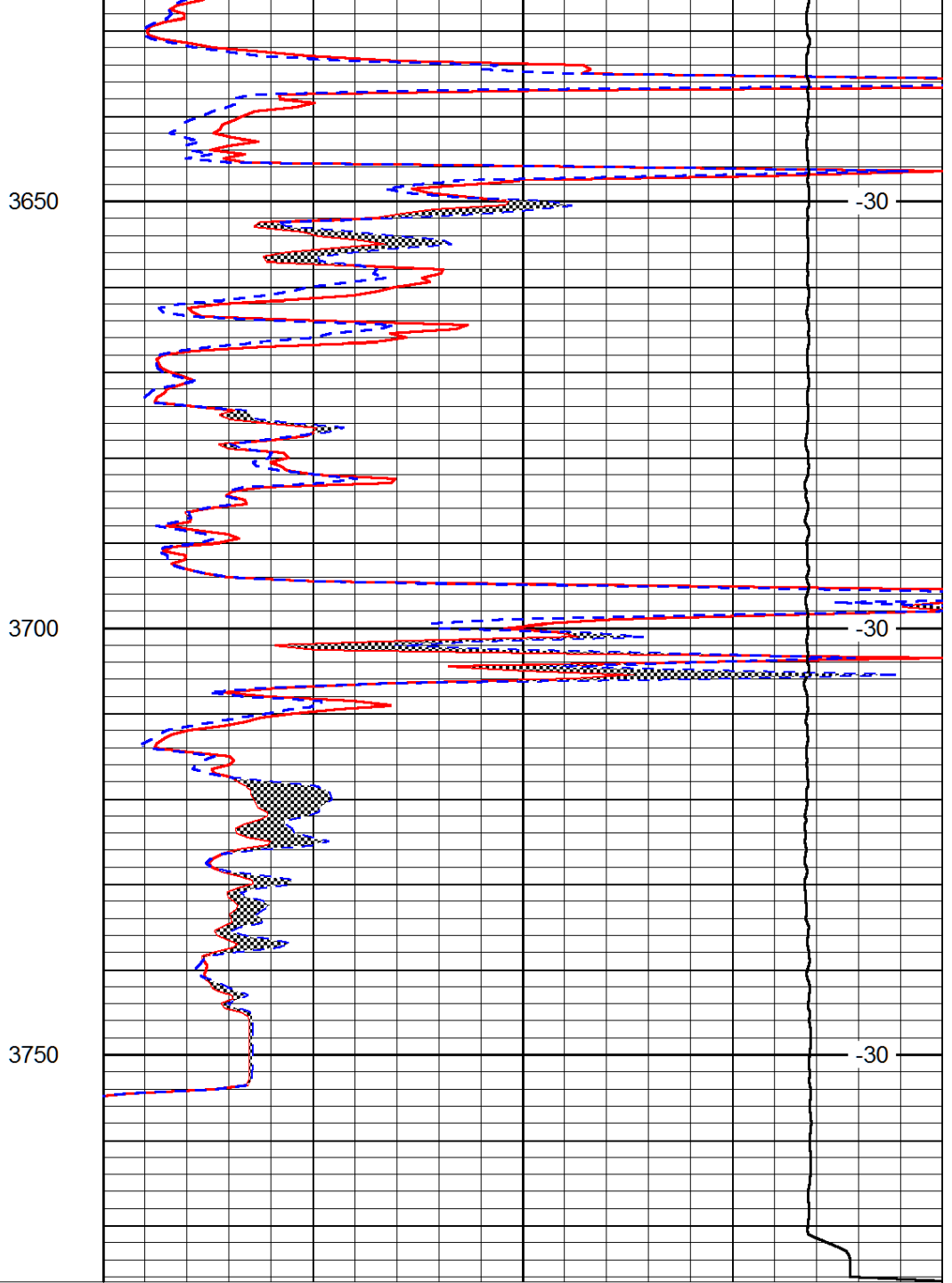
-30

-30

-30



0	Gamma Ray (GAPI)	150
6	MCAL (in)	16
2.875	Mud Cake (in)	7.875
-200	SP (mV)	0



0	Micro Inverse 1 X 1 (Ohm-m)	40
0	Micro Normal 2" (Ohm-m)	40
10000	Line Weight (lb)	0

LSPD
(ft/min)