



WIRELINE SERVICES, INC.
CHANDLER, KANSAS

**GAMMA RAY
NEUTRON
COMPLETION LOG**

Company VERDE OIL COMPANY
Well E. DAVIDSON #12
Field OWL CREEK
County WOODSON
State KANSAS

Company VERDE OIL COMPANY
Well E. DAVIDSON #12
Field OWL CREEK
County WOODSON State KANSAS

Location: API # : 15-207-28788-00-00
1540' FSL & 1100' FEL
SW SW NE SE
SEC 6 TWP 25S RGE 16E
Permanent Datum GL Elevation 995' EST.
Log Measured From GL
Drilling Measured From GL

Other Services
Elevation
K.B.
D.F.
G.L. 995' EST.

Date	1-7-14		
Run Number	1 NW		
Depth Driller			
Depth Logger	1033.4'		
Top Log Interval	12.3'		
Bottom Logged Interval	1033.4'		
Fluid Level	FULL		
Type Fluid	WATER		
Production Casing	2 7/8" @ TD	@	@
Max. Recorded Temp.			
Estimated Cement Top			
Calculated Cement Top			
Amount & Type Cement			
Amount & Type Admix			
Drilling Contractor			
Equipment Number	109		
Location			
Recorded By	HALL, R.		
Witnessed By	DALE, J.		

<<< Fold Here >>>

All interpretations are opinions based on inferences from electrical or other measurements and we cannot and do not guarantee the accuracy or correctness of any interpretation, and we shall not, except in the case of gross or willful negligence on our part, be liable or responsible for any loss, costs, damages, or expenses incurred or sustained by anyone resulting from any interpretation made by any of our officers, agents or employees. These interpretations are also subject to our general terms and conditions set out in our current Price Schedule.

Comments

THANK YOU

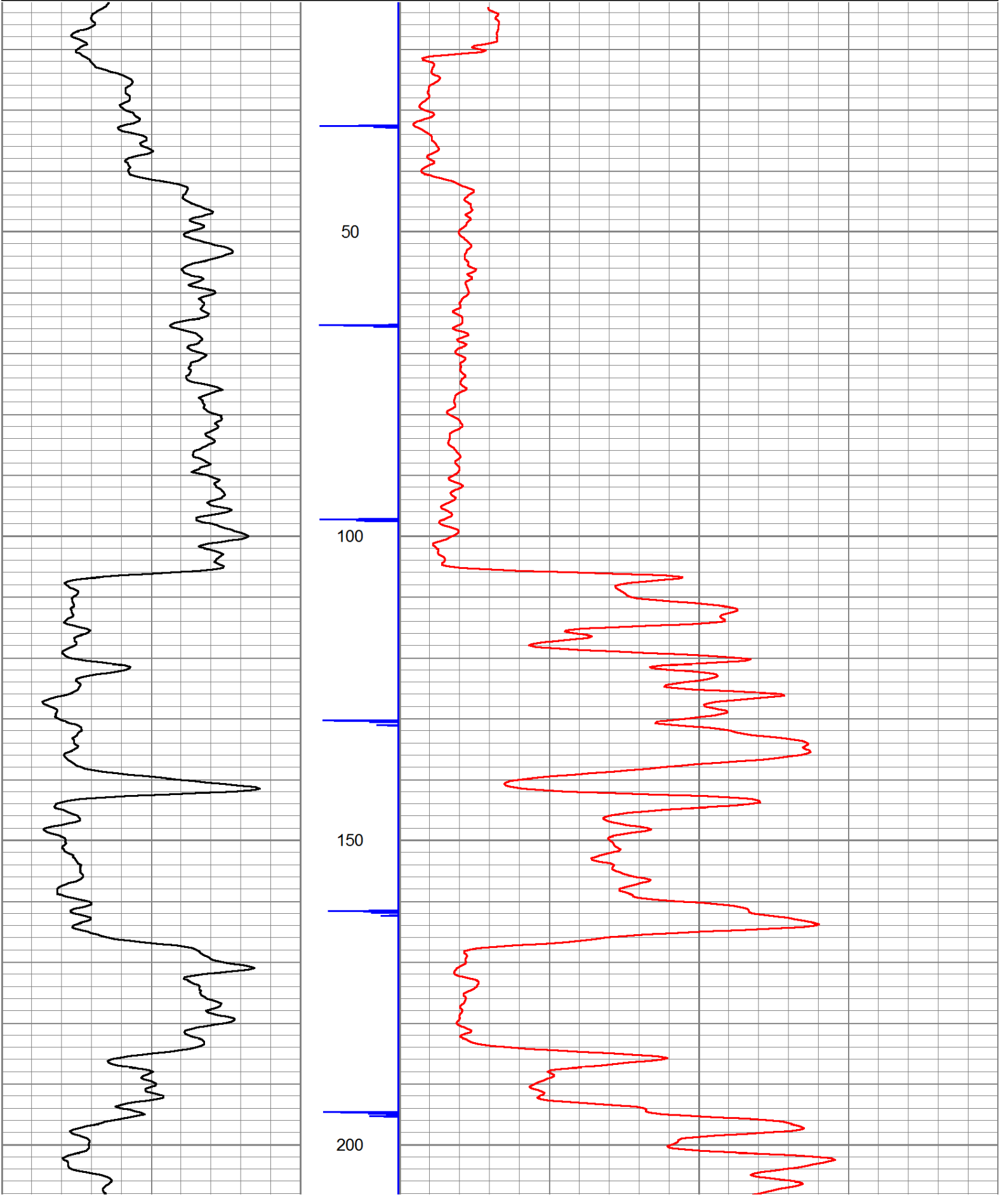
Sensor	Offset (ft)	Schematic	Description	Len (ft)	OD (in)	Wt (lb)

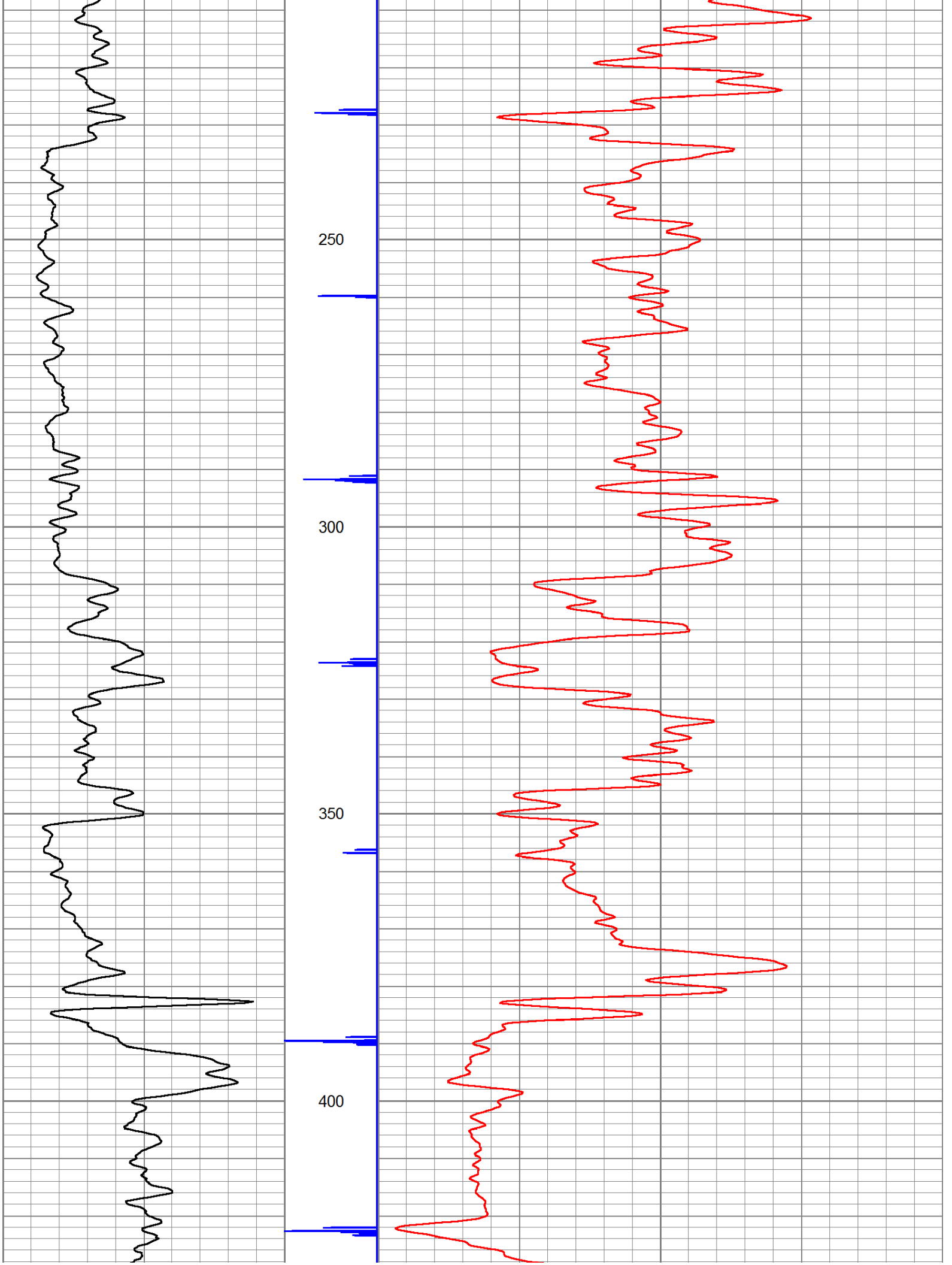
GR	7.59	GR-TITAN_169 (TIT169_001) Titan 1 11/16" Gamma Ray	4.75	1.69	20.00
CCL	5.05	CCL-TITAN_169 (TIT169) Titan 1 11/16" Logging CCL	1.83	1.69	7.50
NEU	0.63	NEU-TITAN (TIT801) TITAN 1 11/16" Neutron	4.33	1.69	25.00

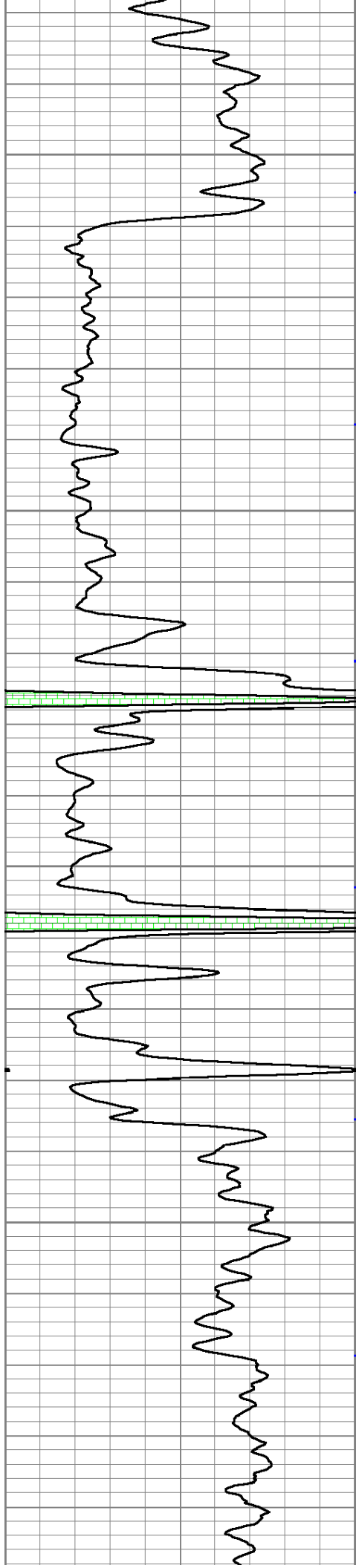
Dataset: e davidson #12.db: field/well/run1/pass1
 Total Length: 10.92 ft
 Total Weight: 52.50 lb
 O.D.: 1.69 in

Database File: p:\logs\verde oil company\e. davidson #12\e davidson #12.db
 Dataset Pathname: pass1
 Presentation Format: gr-n-ccl

150	gr	300	3	CCLJ.05	150	NEU (cps)	1600
0	GR	150					





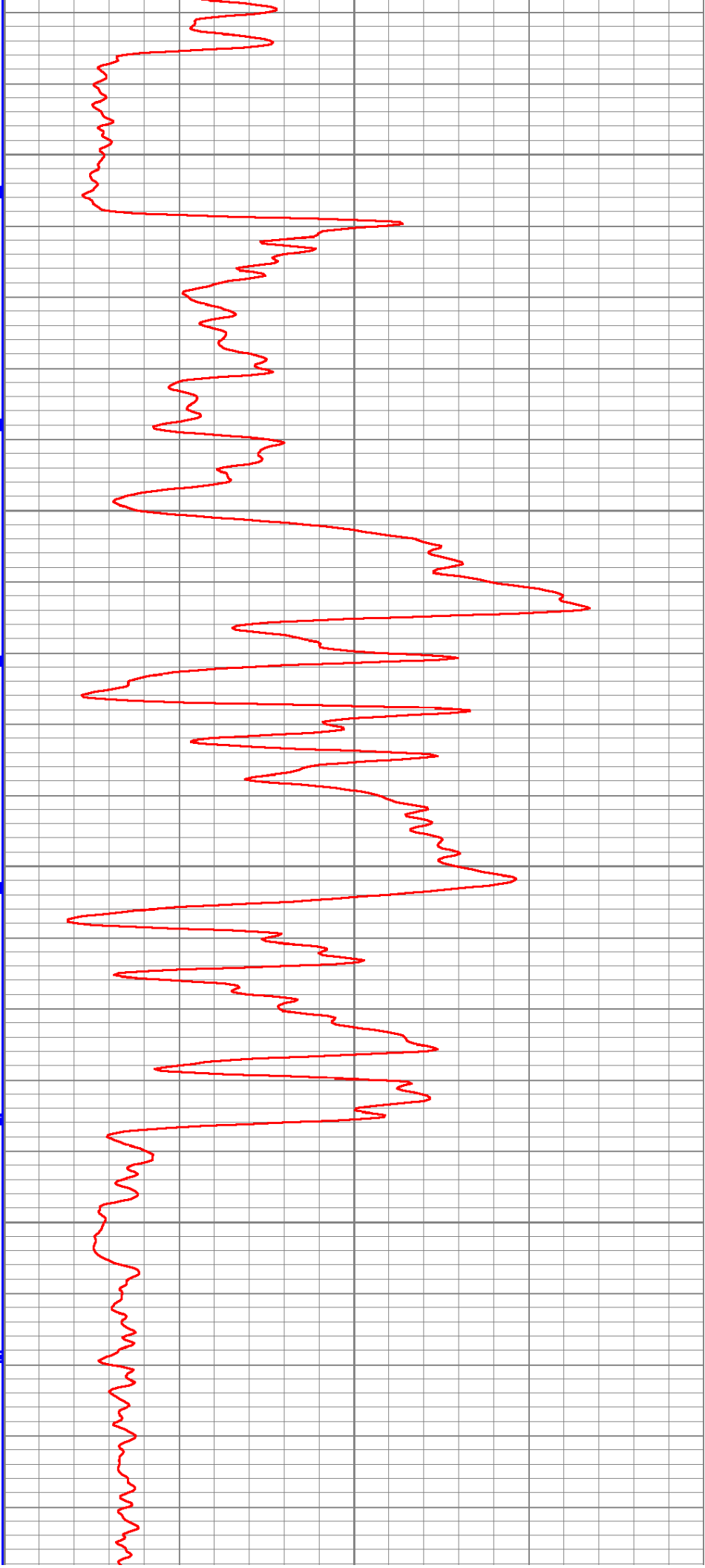


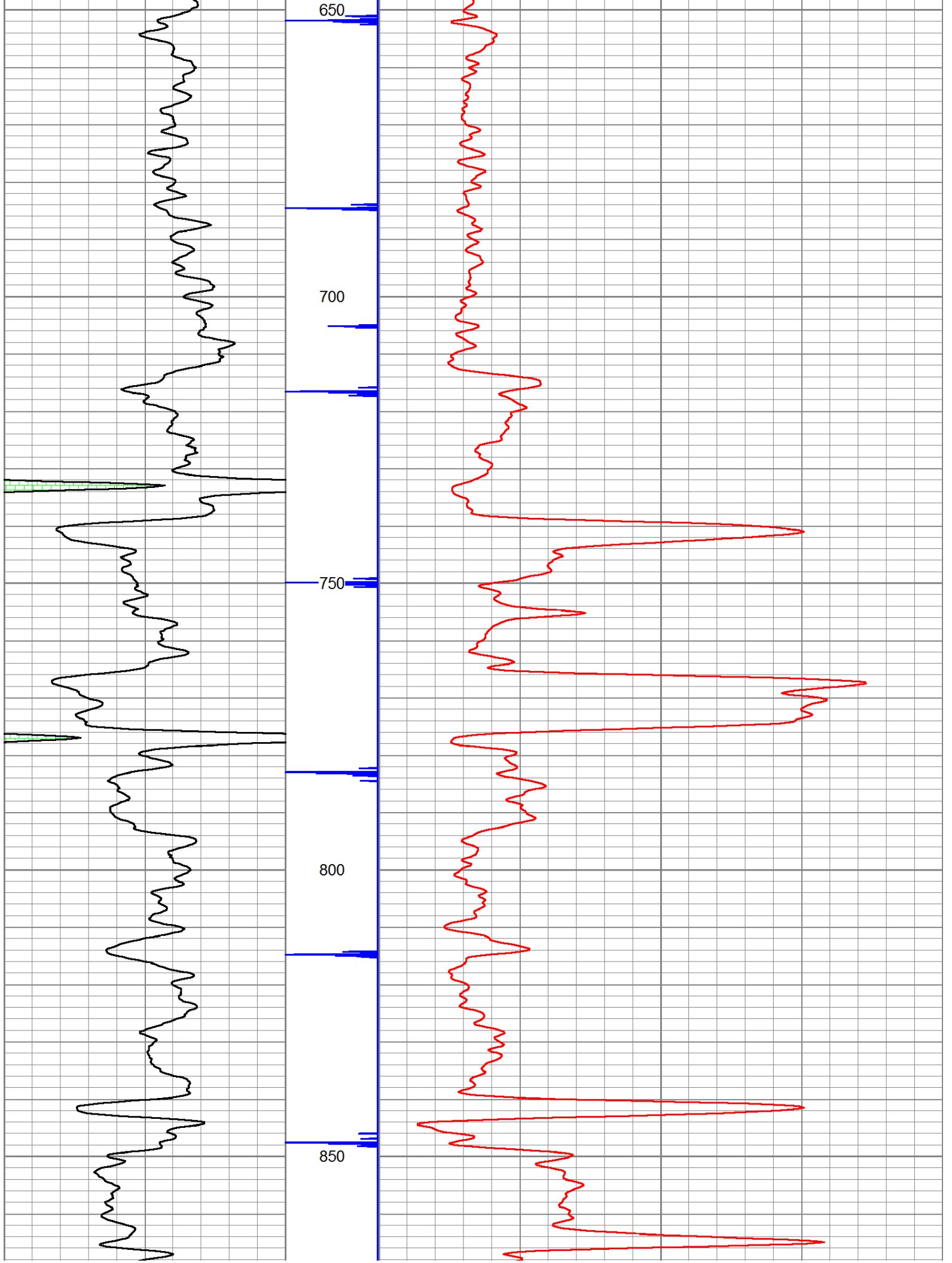
450

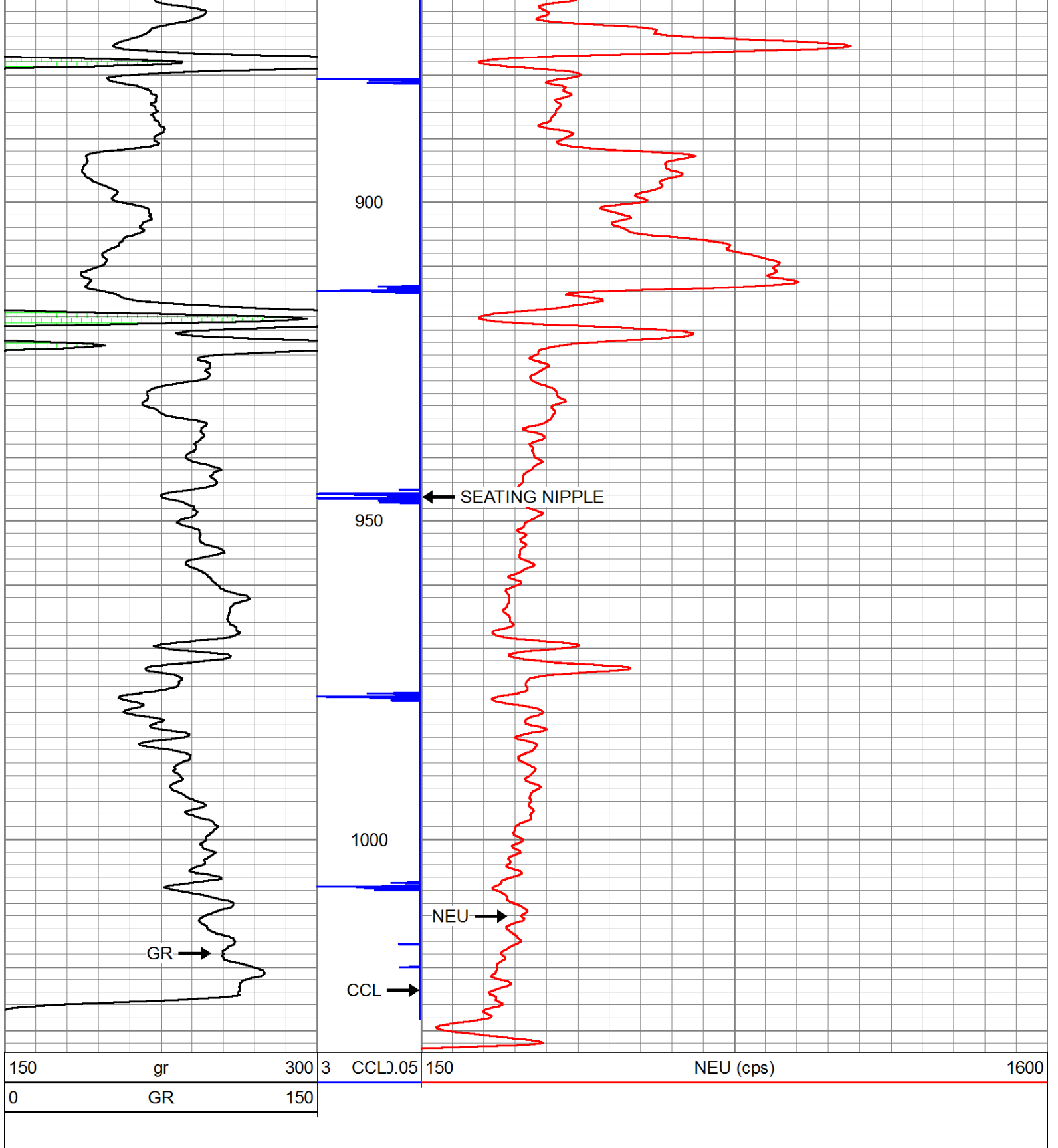
500

550

600







Company	VERDE OIL COMPANY
Well	E. DAVIDSON #12
Field	OWL CREEK
County	WOODSON SEC, 6 TWP. 25S RGE. 16E
State	KANSAS
Date	1-7-14