

MID CONTINENT WELL LOGGING SERVICE, INC.

CONTINUOUS WELL LOGGING / COMPLETE HYDROCARBON ANALYSIS

2222 WESTPARK DR. STE. A
NORMAN, OK 73069
OFFICE (405) 360-7333
OPERATIONS (405) 590-3655
SALES (405) 203-9989

Scale 1:240 (5"=100') Imperial
Measured Depth Log

Well Name: Bryant 3508 3-10H Sandridge Energy
Location: HARPER COUNTY, KANSAS
License Number: 15077219500100 Region: R8W
Spud Date: 8/3/2013 Drilling Completed: 8/17/2013
Surface Coordinates: 350' FNL & 660' FWL OF SECTION 10, T35S, R8W

Bottom Hole 330" FSL & 660' FWL of SEC 10 ,T35S, R8W
Coordinates:
Ground Elevation (ft): 1,280' K.B. Elevation (ft): 1,298'
Logged Interval (ft): 3450 To: 9,010' Total Depth (ft): 9,010'
Formation: MISS
Type of Drilling Fluid:

Printed by MUD.LOG from WellSight Systems 1-800-447-1534 www.WellSight.com

OPERATOR

Company: Sandridge Energy, INC.
Address: 123 Robert S. Kerr Avenue, Ste. 2430
Oklahoma City, Oklahoma 73102-6406

GEOLOGIST

Name: Tammy Alcorn
Company: Sandridge Energy, Inc
Address: 123 Robert S. Kerr Avenue, Ste. 2430
Oklahoma City, Oklahoma 73102-6406

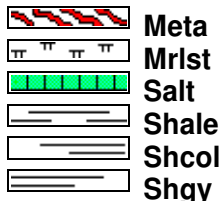
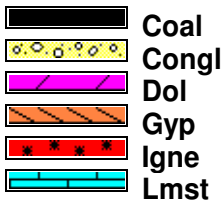
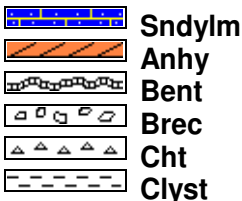
Cores

DSTs

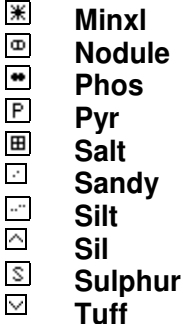
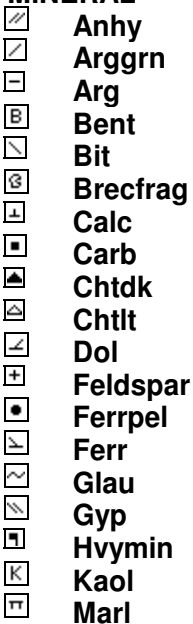
Comments

Directional Company: ARCHER
Mud Loggers: Andrew Yates And David Milburn

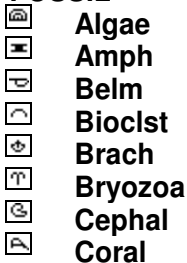
ROCK TYPES



MINERAL



FOSSIL



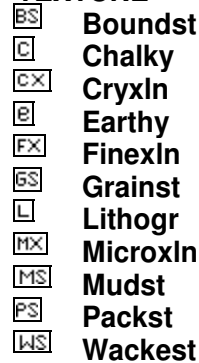
ACCESSORIES



STRINGER

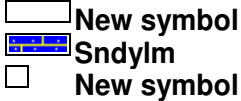
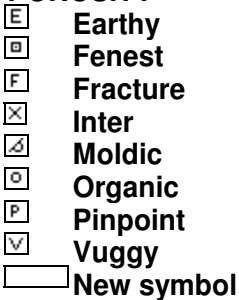


TEXTURE



OTHER SYMBOLS

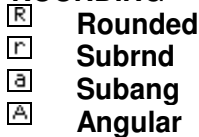
POROSITY



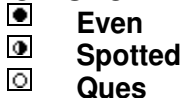
SORTING



ROUNDING



OIL SHOW

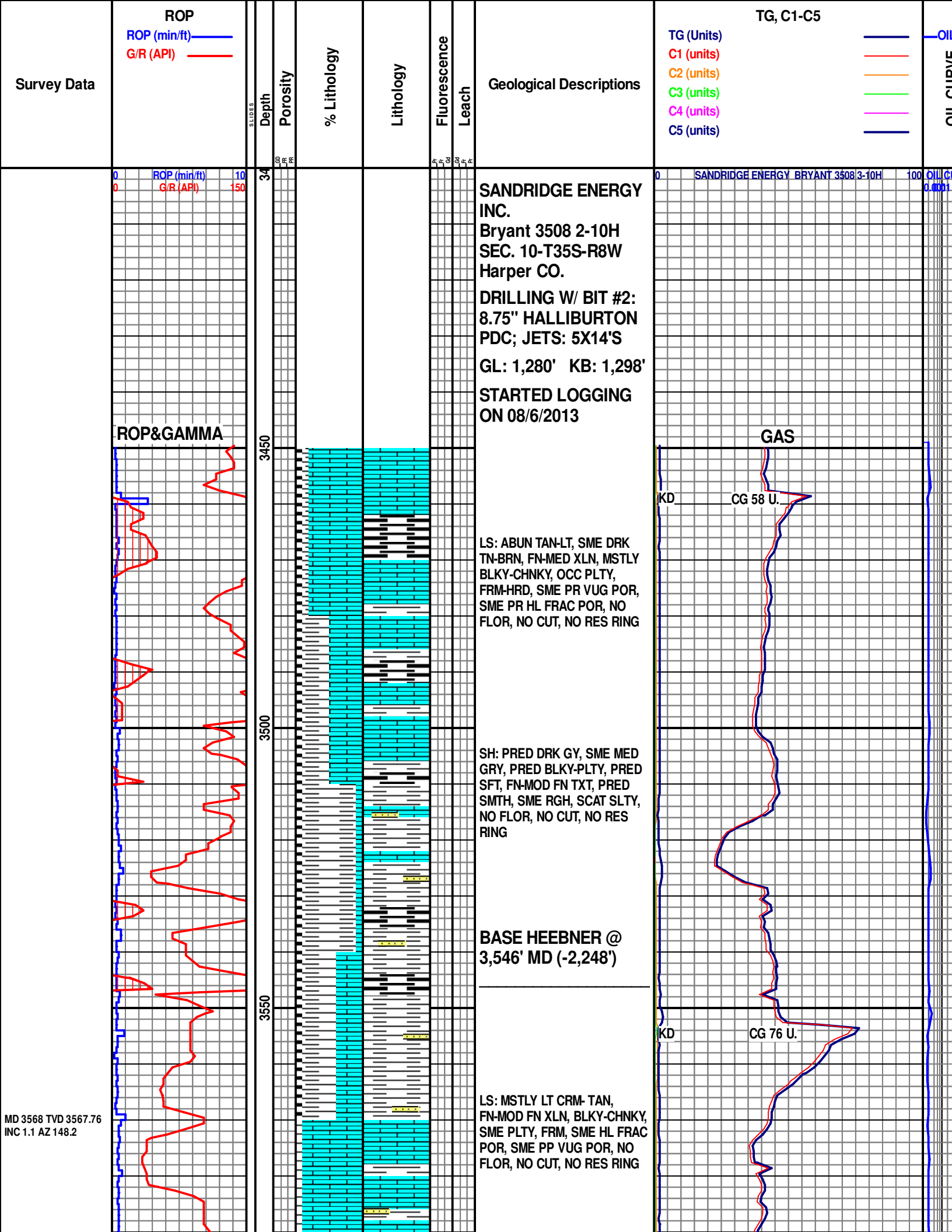


INTERVAL



EVENT





MD 3599 TVD 3598.75
INC 1.3 AZ 143.7
WOB-23.0
RPM-59
PP-2535
SPM-134
GPM-444

MD 3630 TVD 3629.74
INC 2.1 AZ 151

MD 3662 TVD 3661.69
INC 4.1 AZ 158

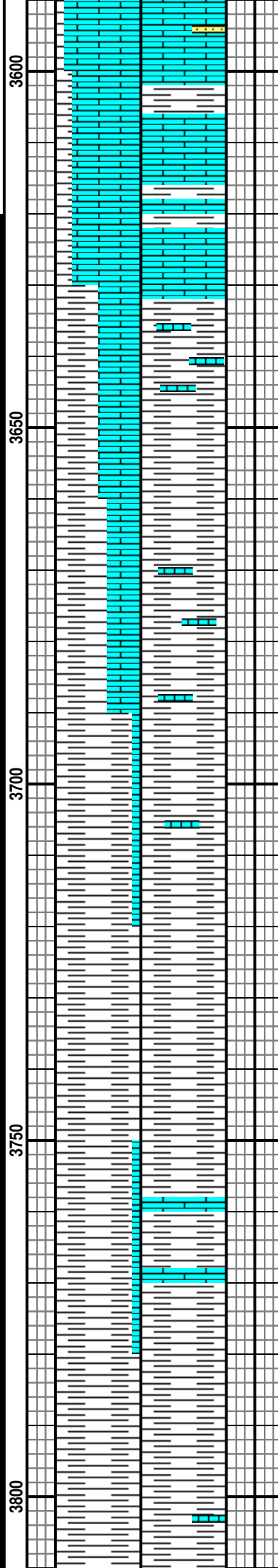
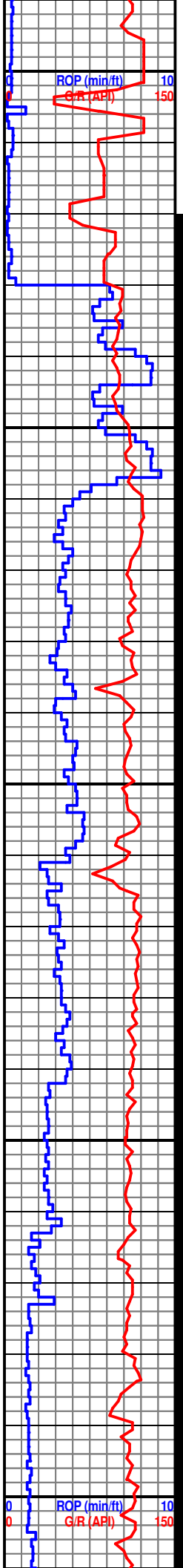
8/10/2013

MD 3694 TVD 3693.59
INC 5.1 AZ 164.2

MD 3725 TVD 3724.45
INC 5.6 AZ 164.8

MD 3757 TVD 3756.3
INC 5.7 AZ 162.6

MD 3788 TVD 3787.14
INC 5.8 AZ 163.3



@3,616' STARTED
SIDE TRACK ON
8/9/2013

LS: PRED LT TAN-MED
TAN, FN-MED XLN, MSTLY
BLKY-CHNKY, OCC PLTY,
FRM-HRD, SME PR VUG POR,
SME PR HL FRAC POR, NO
FLOR, NO CUT, NO RES RING

SH: PRED MED GY, SME LT GY,
OCC DRK GY, MOD FRM, SME
SLI FRM, SUBANG, SME PLTY,
SME SUBWXY TXT, NO VIS
FLOR, NO CUT, NO RES RING

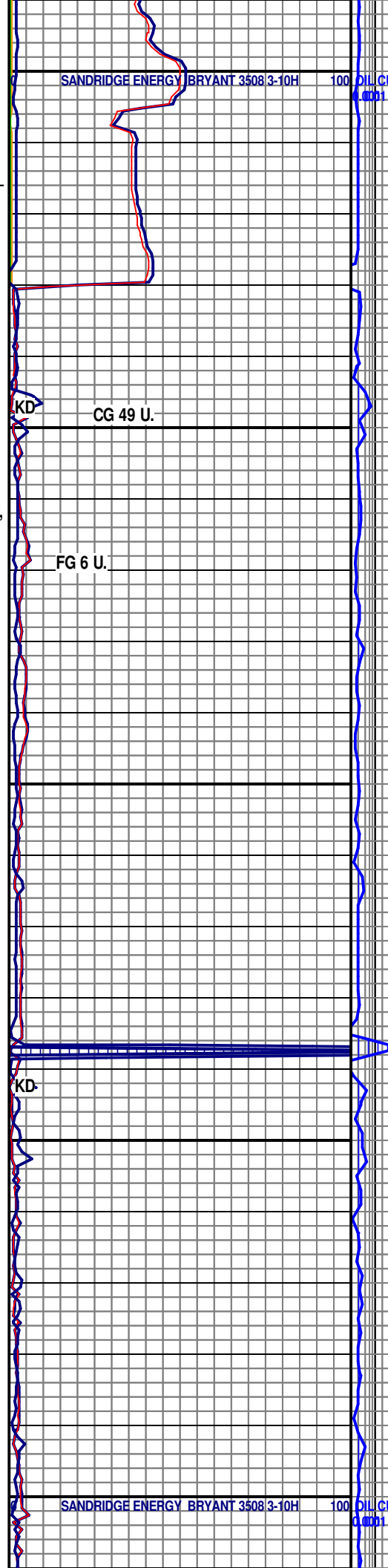
LOW SAMPLE QUALITY DUE
TO HIGH LEVEL OF CEMENT

SH: PRED MED GY, SME DRK
GY, PRED SLI FRM, SME MOD
FRM, TR FRM, SUBANG, OCC
PLTY, SME SUBWXY TXT, NO
VIS FLOR, NO CUT, NO RES
RING

LOW SAMPLE QUALITY DUE
TO HIGH LEVEL OF CEMENT

SH: ABUN LT-MED GY, SME
DRK GY, PRED BLKY-CHNKY,
PRED SFT, FN-MOD FN, PRED
RGH SLTY TXT, SCAT SMTH,
NO FLOR, NO CUT, NO RES
RING

LOW SAMPLE QUALITY DUE
TO HIGH LEVEL OF CEMENT



SANDRIDGE ENERGY BRYANT 3508 3-10H 100

KD CG 49 U.

FG 6 U.

KD

SANDRIDGE ENERGY BRYANT 3508 3-10H 100

MD 3820 TVD 3818.98
INC 5.8 AZ 166.4

MD 3851 TVD 3849.81
INC 6.1 AZ 164

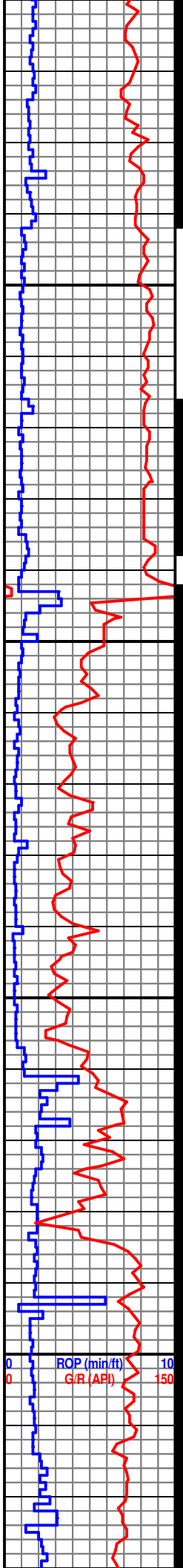
MD 3882 TVD 3880.64
INC 6.1 AZ 164.1

MD 3913 TVD 3911.46
INC 6 AZ 163.5

MD 3944 TVD 3942.29
INC 6 AZ 166.2

MD 3976 TVD 3974.07
INC 7.6 AZ 169.4

MD 4008 TVD 4005.67
INC 10.5 AZ 171.6



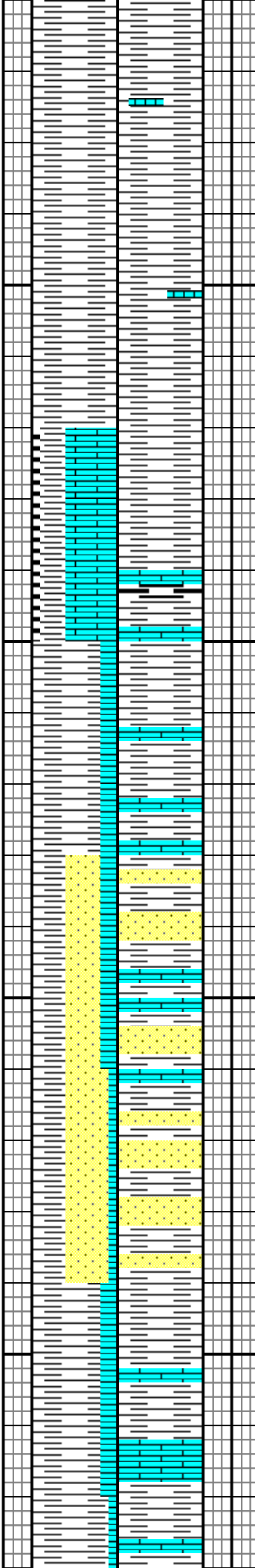
3850

3900

3950

4000

ROP (min/ft) 10
G/R (API) 150



SH: PRED DRK GY, OCC LT GRY, TR BLK, RGH SLTY TXT, CHNKY, SME BLKY, SFT-FRM, NO FLOR, NO CUT, NO RES RING

LOW SAMPLE QUALITY DUE TO HIGH LEVEL OF CEMENT

SH: MSTLY DRK GY, PRED BLKY-CHNKY, PRED SFT, FN-MOD FN, PRED RGH SLTY TXT, SCAT SMTH, NO FLOR, NO CUT, NO RES RING

LANSING @ 3,894'MD (-2,596')

LOW SAMPLE QUALITY DUE TO HIGH LEVEL OF CEMENT

SH: MSTLY DRK GRY, SME GRY- LT GRY, PRED CALCA, SME SILTY, OCC SNDY, PRED FN- MED FN TXT, PRED CHNKY, SME BLKY, PRED MOD FRM-FRM, SME SS IN SMPLE, TR OF LS, NO FLOR, NO CUT, NO RES RING

LOW SAMPLE QUALITY DUE TO HIGH LEVEL OF CEMENT

SS: MSTLY TAN- LT TAN, SME OFF WHI, PRED VRY FN GRAINS, SME FN GRAINS, OCC COARSE GRAINS, PRED SUB RND- RND, TR OF LS, NO FLOR, NO CUT, NO RES RING

LOW SAMPLE QUALITY DUE TO HIGH LEVEL OF CEMENT

SH: MSTLY DRK GRY, SME GRY- LT GRY, PRED CALCA, SME SILTY, OCC SNDY, PRED FN- MED FN TXT, PRED CHNKY, SME BLKY, PRED MOD FRM-FRM, TR OF LS, NO FLOR, NO CUT, NO RES RING

KD

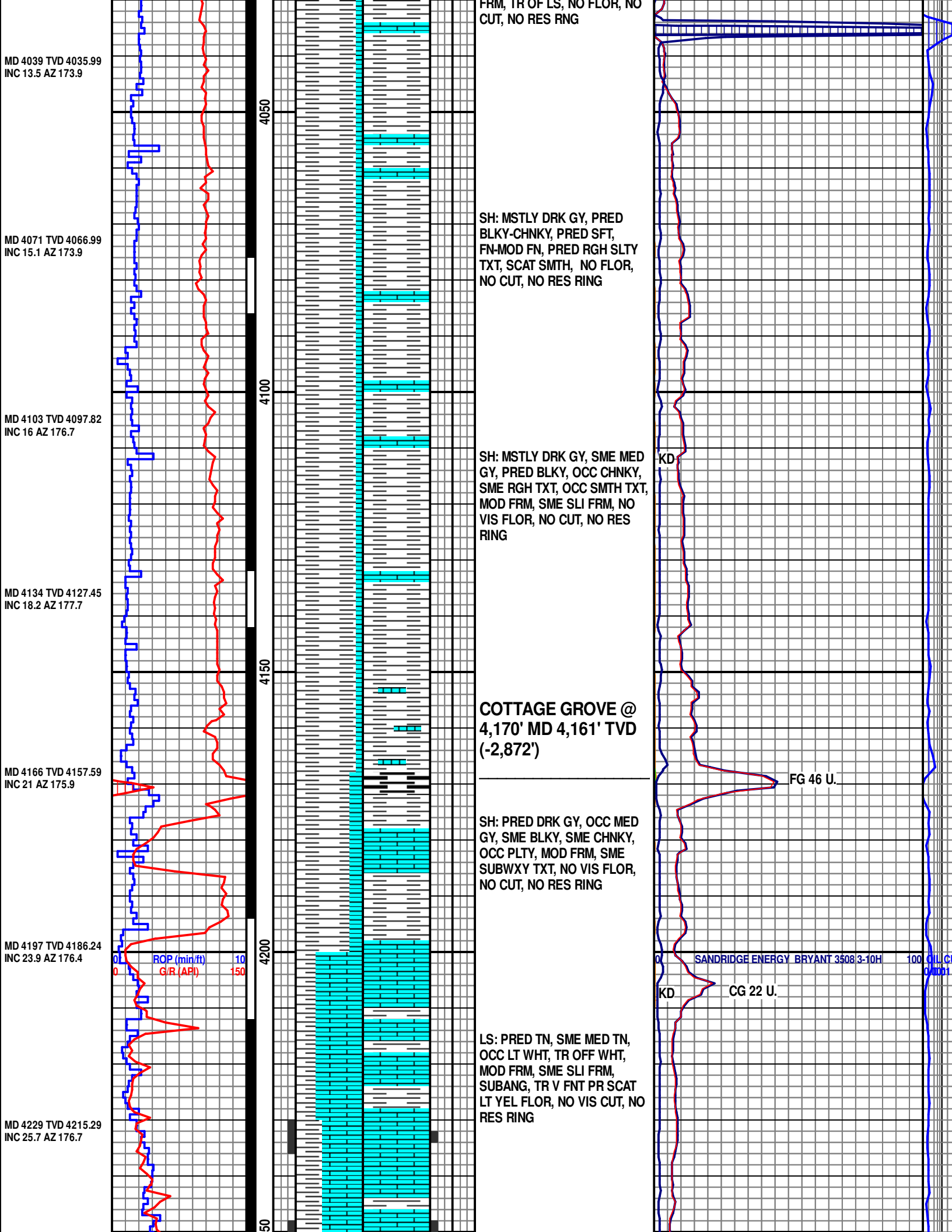
FG 31 U.

KD

CG 9 U.

KD

SANDRIDGE ENERGY BRYANT 3508-3-10H 100 OIL (C) 0.0001



MD 4039 TVD 4035.99
INC 13.5 AZ 173.9

MD 4071 TVD 4066.99
INC 15.1 AZ 173.9

MD 4103 TVD 4097.82
INC 16 AZ 176.7

MD 4134 TVD 4127.45
INC 18.2 AZ 177.7

MD 4166 TVD 4157.59
INC 21 AZ 175.9

MD 4197 TVD 4186.24
INC 23.9 AZ 176.4

MD 4229 TVD 4215.29
INC 25.7 AZ 176.7

4050

4100

4150

4200

50

FRM, TR OF LS, NO FLOR, NO CUT, NO RES RING

SH: MSTLY DRK GY, PRED BLKY-CHNKY, PRED SFT, FN-MOD FN, PRED RGH SLTY TXT, SCAT SMTH, NO FLOR, NO CUT, NO RES RING

SH: MSTLY DRK GY, SME MED GY, PRED BLKY, OCC CHNKY, SME RGH TXT, OCC SMTH TXT, MOD FRM, SME SLI FRM, NO VIS FLOR, NO CUT, NO RES RING

COTTAGE GROVE @ 4,170' MD 4,161' TVD (-2,872')

SH: PRED DRK GY, OCC MED GY, SME BLKY, SME CHNKY, OCC PLTY, MOD FRM, SME SUBWXY TXT, NO VIS FLOR, NO CUT, NO RES RING

LS: PRED TN, SME MED TN, OCC LT WHT, TR OFF WHT, MOD FRM, SME SLI FRM, SUBANG, TR V FNT PR SCAT LT YEL FLOR, NO VIS CUT, NO RES RING

KD

FG 46 U.

KD CG 22 U.

ROP (min/ft) 10
G/R (API) 150

SANDRIDGE ENERGY BRYANT 3508 3-10H 100

MD 4261 TVD 4243.91
INC 27.4 AZ 177.4

8/10/2013

MD 4292 TVD 4271.22
INC 29.1 AZ 178.4

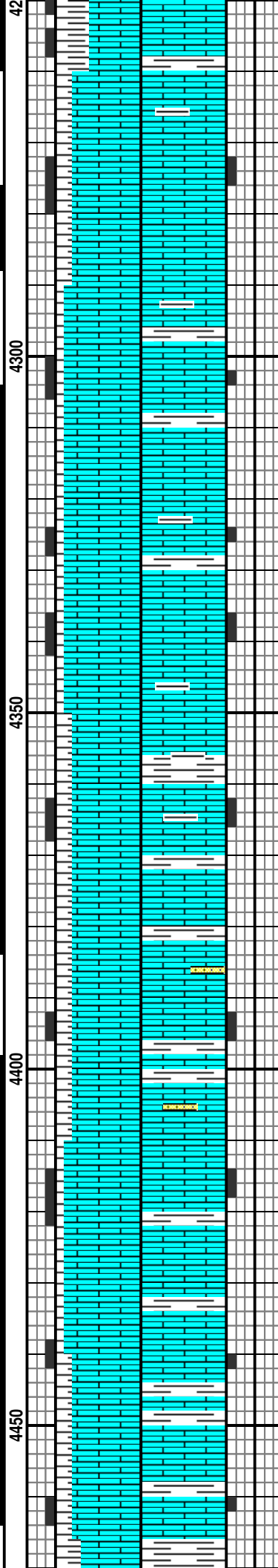
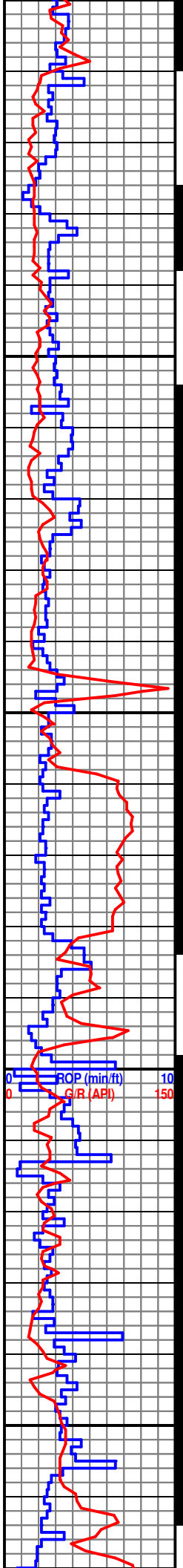
MD 4323 TVD 4298.08
INC 30.8 AZ 178.1

MD 4355 TVD 4325.39
INC 32 AZ 179.6

MD 4386 TVD 4351.46
INC 33.5 AZ 180.4

MD 4418 TVD 4377.96
INC 34.7 AZ 180.7

MD 4449 TVD 4403.18
INC 36.4 AZ 181.9



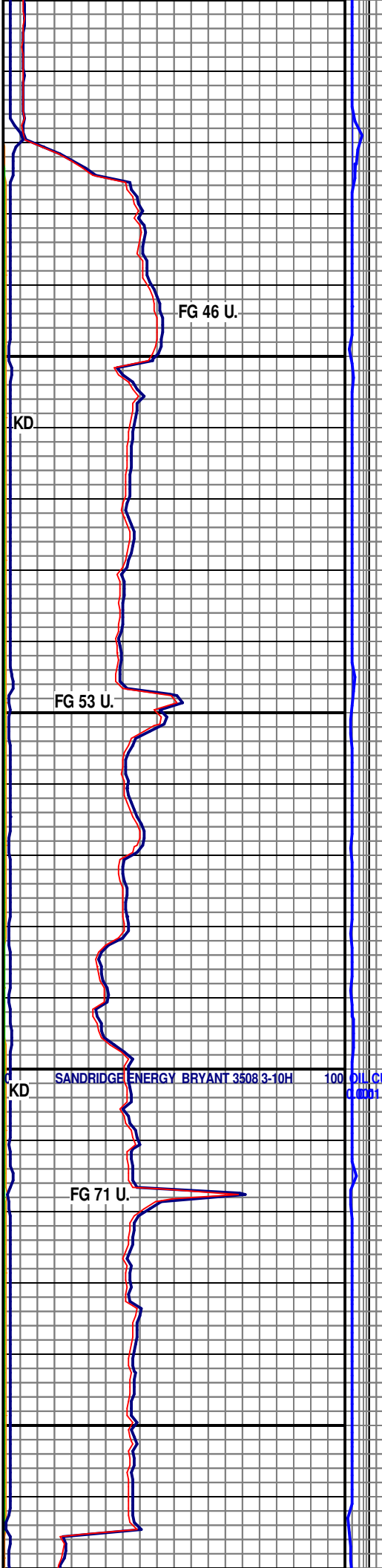
LS: PRED LT TN, SME MED TN,
OCC TN, SME WHT, SME OFF
WHT, SUBANG, OCC SUBRND,
MOD FRM, OCC SLI FRM, TR V
FNT PR SCAT LT YEL FLOR,
NO VIS CUT, NO RES RING

LS: MSLTY TN, SME LT TN,
OCC WHT, SME OFF WHT, MOD
FRM, SME SLI FRM, TR FRM,
PRED SUBANG, OCC SUBRND,
V FNT PR SCAT LT YEL FLOR,
NO VIS CUT, NO RES RING

LS: PRED TN, SME MED TN,
OCC LT WHT, TR OFF WHT,
MOD FRM, SME SLI FRM,
SUBANG, TR V FNT PR SCAT
LT YEL FLOR, NO VIS CUT, NO
RES RING

LS: MSLTY TN, SME LT TN,
OCC WHT, SME OFF WHT, MOD
FRM, SME SLI FRM, TR FRM,
PRED SUBANG, OCC SUBRND,
V FNT PR SCAT LT YEL FLOR,
NO VIS CUT, NO RES RING

T.O.O.H @4,465' TO



MD 4481 TVD 4428.64
INC 38.2 AZ 183.5

MD 4513 TVD 4453.58
INC 39.4 AZ 183.2

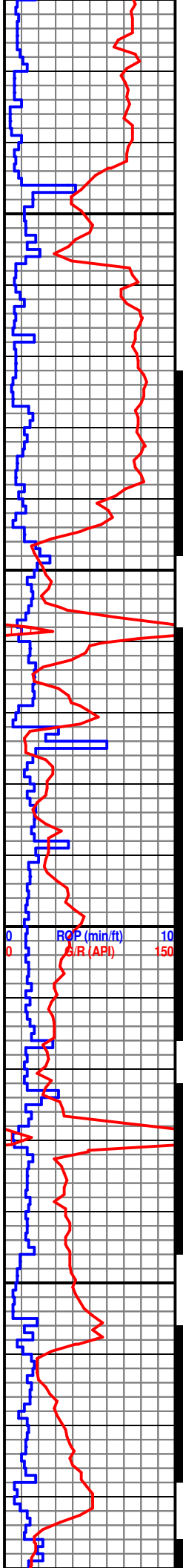
MD 4544 TVD 4477.31
INC 40.7 AZ 183.8

MD 4576 TVD 4501.25
INC 42.4 AZ 184.2

MD 4607 TVD 4523.7
INC 44.8 AZ 182.1

MD 4639 TVD 4545.93
INC 47.2 AZ 181.7

MD 4671 TVD 4567.36
INC 48.7 AZ 180

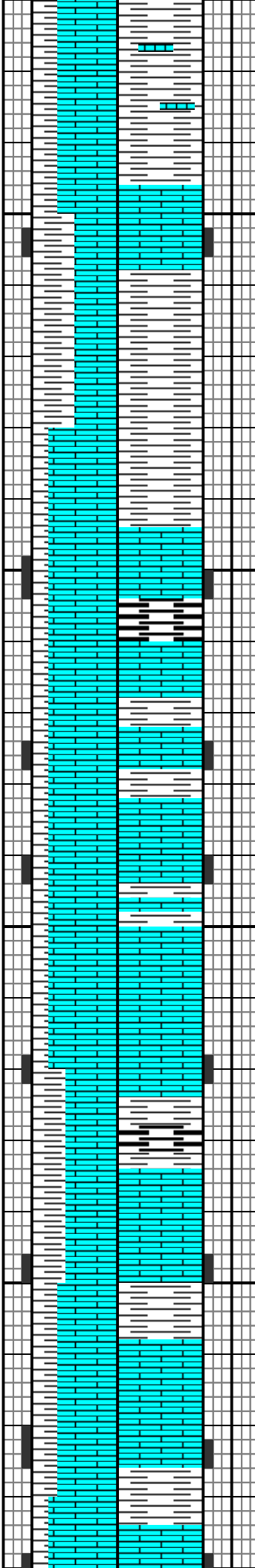


4500

4550

4600

4650



ADJUST ELEVATORS AND NEW BIT#5 8.75 PDC, MMD55M, 12192170,5X14S

SH: PRED MED GY, SME DRK GY, OCC LT GY, MOD FRM, SUBANG, LS: PRED TN, SME MED TN, OCC LT TN, SME CRM, SLI FRM, SME MOD FRM, SUBANG, V FNT SCAT LT YEL FLOR, NO VIS CUT, NO RES RING,

OSEWGO @ 4,558'
MD 4,488' TVD
(-3,199')

LS: PRED TN, SME MED TN, SME LT TN, OCC OFF WHT, TR CRM, MSTLY FRM, SME SLI FRM, OCC MOD FRM, SUBANG, SME PLTY, V FNT SCAT LT YEL FLOR, NO VIS CUT, NO RES RING

LS: MSTLY TN, SME LT TN, OCC MED TN, TR OFF WHT, SUBANG, SME SUBRND, OCC PLTY, MOD FRM, SCAT LT YEL FLOR, NO VIS CUT, NO RES RING

LS: PRED TN, SME MED TN, MOD FRM, SME SLI FRM, SME FRM, SUBANG, SME PLTY, SCAT LT YEL FLOR, NO VIS CUT, NO RES RING,

KD

CG 23 U.

KD

SANDRIDGE ENERGY BRYANT 3508-3-10H 100 OIL G

KD

8/12/2013

MD 4702 TVD 4587.33
INC 51.1 AZ 179.3

MD 4734 TVD 4606.98
INC 53.1 AZ 179.3

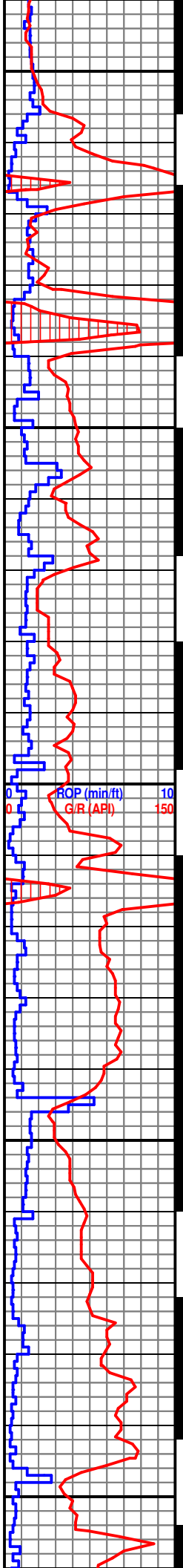
MD 4765 TVD 4625.29
INC 54.5 AZ 180.6

MD 4797 TVD 4643.44
INC 56.4 AZ 180.1

MD 4829 TVD 4660.75
INC 58.1 AZ 179.6

MD 4860 TVD 4676.69
INC 60 AZ 180.1

MD 4892 TVD 4692.33
INC 61.5 AZ 180



4700
4750
4800
4850
4900

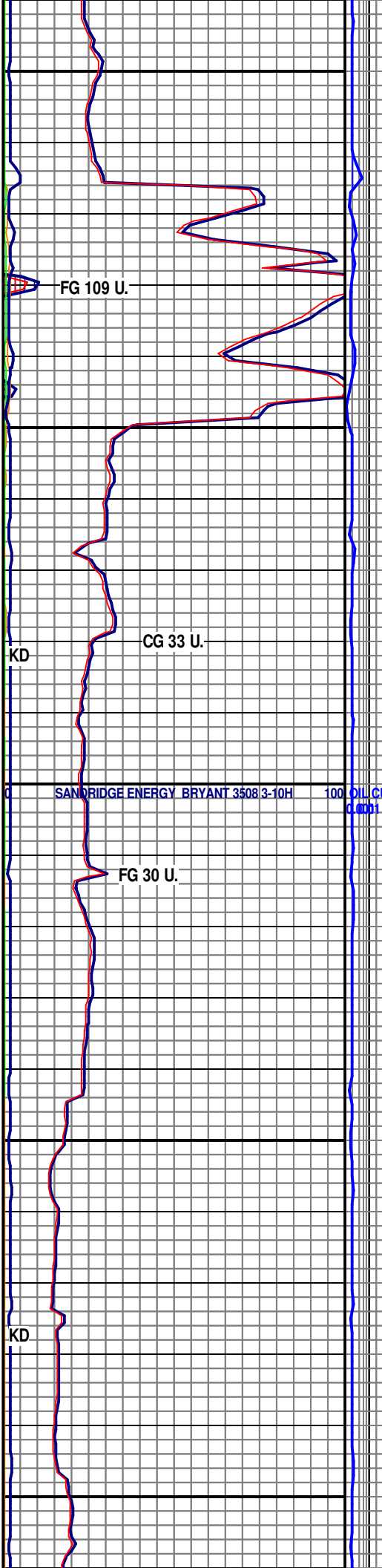
CHEROKEE @ 4,714'
MD 4,595' TVD
(-3,306')

LS: MSTLY TN, SME LT TN,,
OCC CRM, SME OFF WHT,
PRED SUBANG, OCC SUBRND,
MOD FRM, SME SLI FRM, OCC
FRM, SCAT DUL LT YEL FLOR,
NO VIS CUT, NO RES RING

LS: PRED MED TN, SME LT TN,
SME CRM, SME OFF WHT, MOD
FRM, SME SLI FRM, SUBANG,
SME SUB RND, OCC DUL LT
YEL FLOR, NO VIS CUT, NO
RES RING

VERDIGRIS @ 4,812'
MD 4,652' TVD
(-3,363')

LS: PRED TN, SME LT TN, SME
CRM, MOD FRM, SME SLI FRM,
SUBANG, SH: PRED LT GY,
SME MED GY, SUBANG, SME
PLTY, SLI FRM, OCC MOD FRM,
DUL LT YEL FLOR, NO VIS
CUT, NO RES RING



FG 109 U.

CG 33 U.

FG 30 U.

SANRIDGE ENERGY BRYANT 3508 3-10H 100

KD

KD

MD 4924 TVD 4707.1
INC 63.5 AZ 180

MD 4956 TVD 4720.8
INC 65.8 AZ 180.5

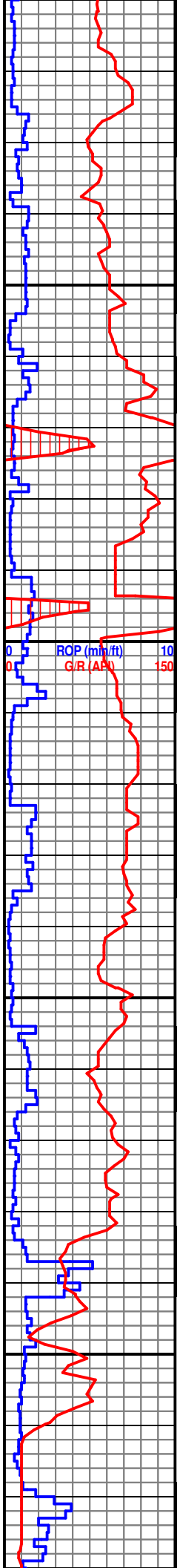
MD 4987 TVD 4733.12
INC 67.4 AZ 179.1

MD 5019 TVD 4744.97
INC 69.1 AZ 180

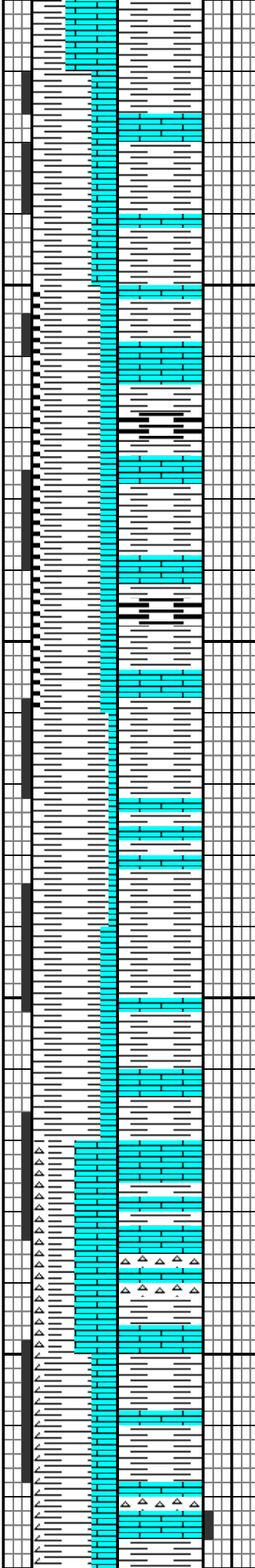
MD 5050 TVD 4755.68
INC 70.5 AZ 180.6

MD 5083 TVD 4766.23
INC 72.2 AZ 180.9

MD 5114 TVD 4775.34
INC 73.6 AZ 180.2



4950
5000
5050
5100



SH: ABUN MED GY, SME DRK GY, SLI FRM, SUBANG, SME SUBRND, LS: TN, SME DRK TN, OCC LT TN, SUBANG, OCC PLTY, MOD FRM, OCC FRM, NO VIS FLOR, NO CUT, NO RES RING

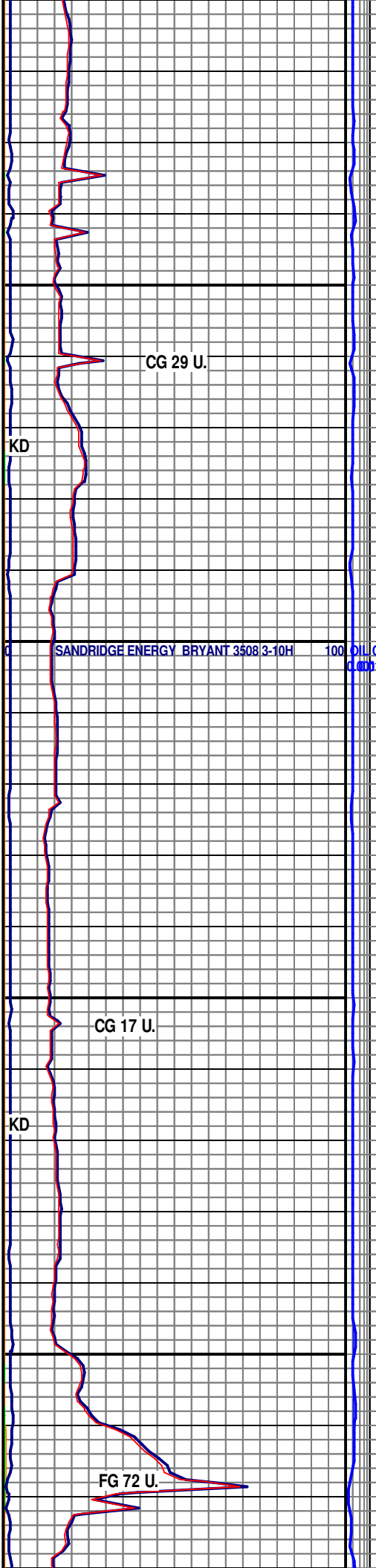
SH: MSTLY MED GY, SME LT GY, PRED BLKY-PLTY, PRED SFT, FN-MOD FN TXT, PRED SMTH, SME RGH, SCAT SLTY, NO FLOR, NO CUT, NO RES RING

SH: PRED MED GY, SME DRK GY, SLI FRM, SUBANG, SME SUBRND, LS: TN, SME DRK TN, OCC LT TN, SUBANG, OCC PLTY, MOD FRM, OCC FRM, NO VIS FLOR, NO CUT, NO RES RING

LS: PRED TN, SME LT TN, SME DRK TN, OCC CRM, SUBANG, SME PLTY, MOD FRM, SME SLI FRM, TR FRM, NO VIS FLOR, NO CUT, NO RES RING

MISSISSIPPI LIME @ 5,112' MD 4,775' TVD (-3477')

LS: MSTLY OFF WHT - CRM, SME LT TAN, FN-MOD FN XI N



CG 29 U.

KD

SANDRIDGE ENERGY BRYANT 3508 3-10H

CG 17 U.

KD

FG 72 U.

MD 5146 TVD 4783.84
INC 75.6 AZ 180.5

MD 5177 TVD 4791.16
INC 77.1 AZ 180.6

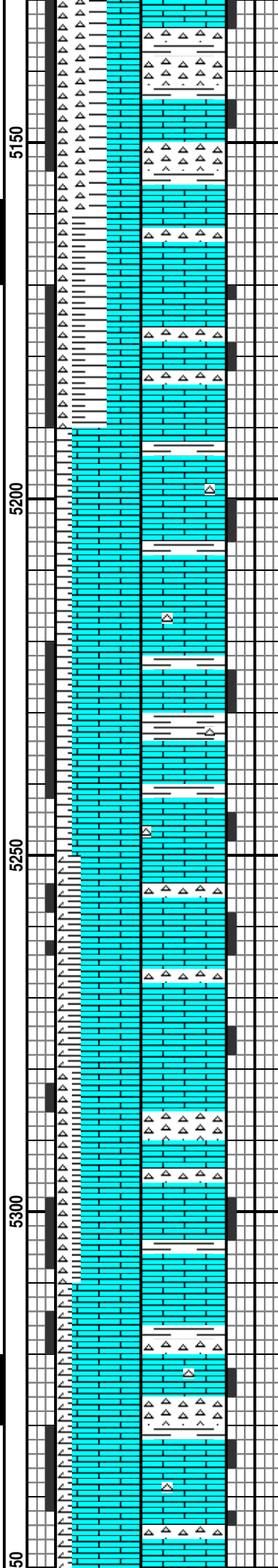
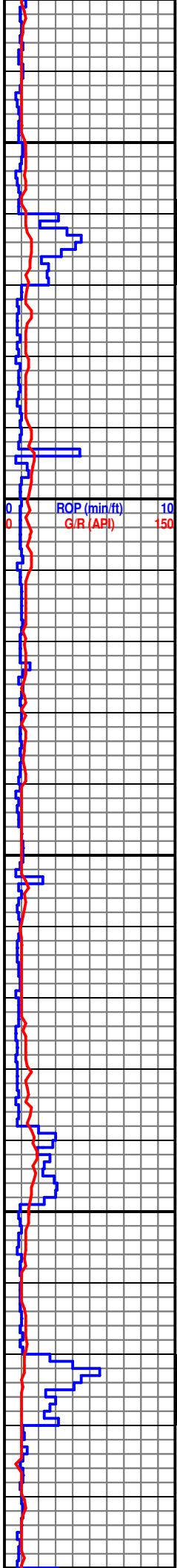
MD 5209 TVD 4798.11
INC 77.8 AZ 180.2

MD 5240 TVD 4804.48
INC 78.5 AZ 180.4

MD 5272 TVD 4810.66
INC 79.2 AZ 180.2

MD 5303 TVD 4816.15
INC 80.4 AZ 180.4

MD 5335 TVD 4821.08
INC 81.9 AZ 180.7



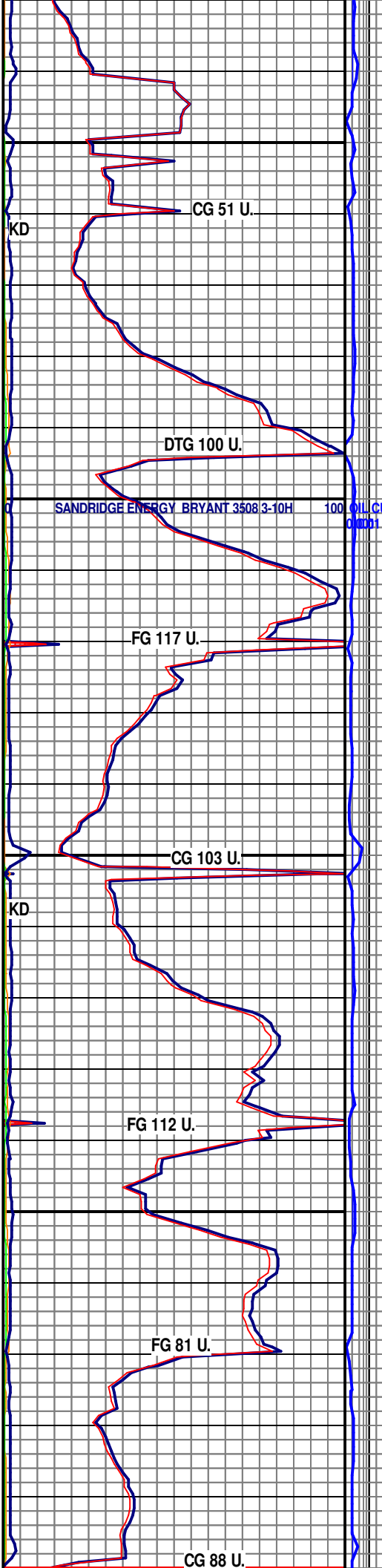
LS: PRED CRM, FN- V FN XLN,
BLKY-CHNKY, FRM, SME HL
FRAC POR, SME PR VUG POR,
OCC HL FRAC POR, TR YEL
FLOR, NO CUT, NO RES RING

LS: MSTLY TAN- LT CRM, FN-V
FN XLN, PRED CHNKY-BLKY,
FRM-V HRD, PR VUG POR, PR
HL FRAC POR, SME YEL
FLOR, NO CUT, NO RES RING

LS: ABUN CRM, FN- V FN XLN,
PRED BLKY, FRM-V HRD,
PR-FR VUG POR, PR HL FRAC
POR, ABDNT YEL-GLD FLOR,
NO CUT, NO RES RING

LS: MSTLY CRM, SME LT TAN,
FN-MOD FN XLN, BLKY-CHNKY,
FRM, SME HL FRAC POR, SME
PR VUG POR, OCC HL FRAC
POR, TR YEL FLOR, NO CUT,
NO RES RING

LS: PRED CRM, FN- V FN XLN,
PRED BLKY, FRM-V HRD,
PR-FR VUG POR, PR HL FRAC
POR, ABDNT YEL-GLD FLOR,
NO CUT, NO RES RING



MD 5366 TVD 4825.12
INC 83.1 AZ 180

MD 5398 TVD 4828.55
INC 84.6 AZ 180

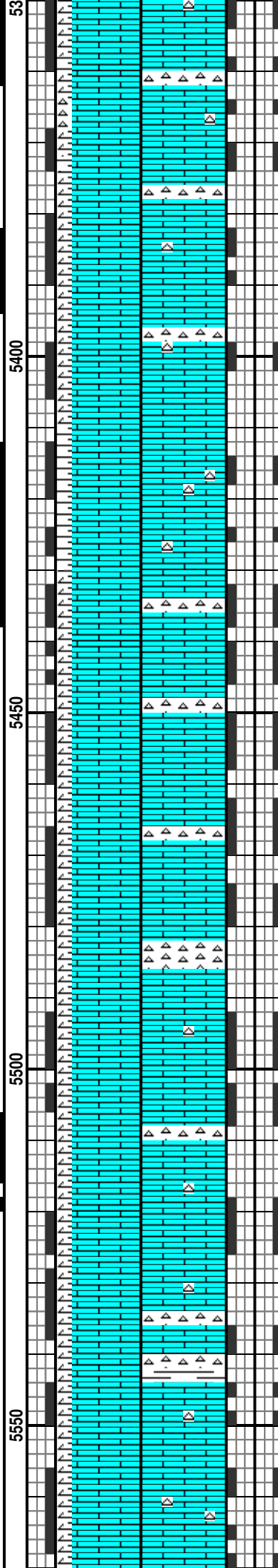
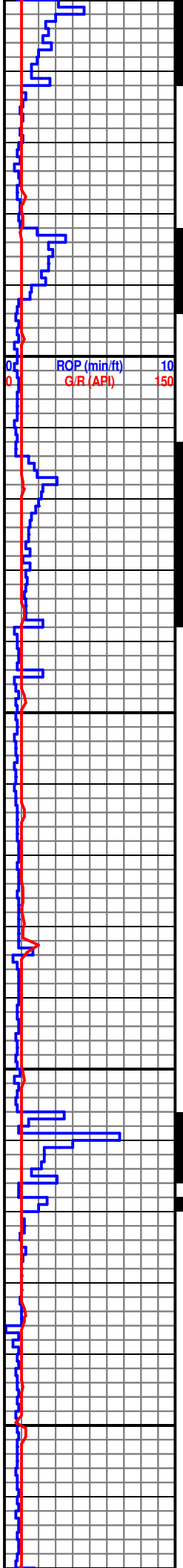
MD 5429 TVD 4830.77
INC 87.2 AZ 180.6

MD 5461 TVD 4831.97
INC 88.5 AZ 181.4

MD 5493 TVD 4832.56
INC 89.4 AZ 181.1

MD 5524 TVD 4832.96
INC 89.1 AZ 181.3

MD 5555 TVD 4833.37
INC 89.4 AZ 181.2



LS: PRED CRM -TAN, TRC TAN
MOTT,TRC OFF WHT, FN-V/FN
XLN, SM GRNLR, MSLTY
BLKY-CHNKY ,SM PLTY, SLI
FRM-MOD SFT, SCAT CHRT
TRNSLCNT- OFF WHT ,SM SH
PRSNT FR VUG POR, SM PP
POR, SCAT DULL YEL-GLD
FLOR, STRMNG MLKY YEL
CUT, FR THIN YEL RES RING

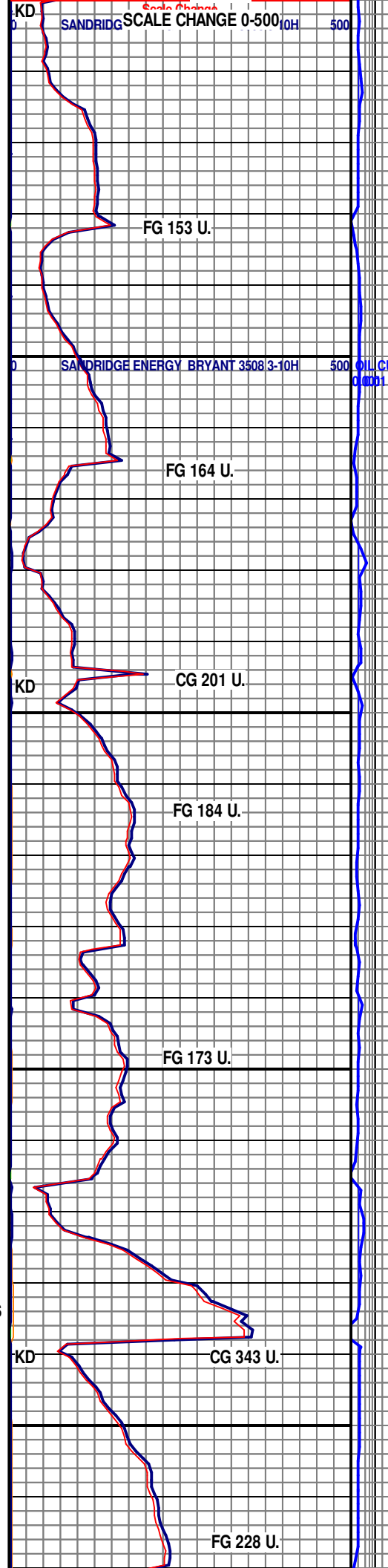
LS: PRED CRM -TAN, SM TAN
MOTT, FN-V/FN XLN, SM
GRNLR, MSLTY BLKY-CHNKY
,SM PLTY, SLI FRM-MOD SFT,
FR VUG POR, SM PP POR,
SCAT DULL YEL-GLD FLOR,
IMMDT MLKY GRN CUT, THIN
GRN RES RING

LS: MSTLYCRM -TAN, SM TAN
MOTT,TRC OFF WHT, FN-V/FN
XLN, MSLTY BLKY-CHNKY ,SM
PLTY, SLI FRM-MOD SFT, FR
VUG POR, SM PP POR, SCAT
YEL-GLD FLOR, STRMNG
-IMMDT MLKY GRN-WHT CUT,
THIN GRN-YEL RES RING

**7" INTERMEDIATE
CASING SET @ 5512'**

LS: PRED CRM -TAN, SM TAN
MOTT,TRC OFF WHT, FN-V/FN
XLN, MSLTY BLKY-CHNKY ,SLI
FRM-MOD SFT,SM HRD, FR
VUG POR, PP POR, SCAT
YEL-GLD FLOR, IMMDT MLKY
GRN-WHT CUT, THIN GRN RES
RING

LS: MSTLY CRM -TAN ,SM TAN

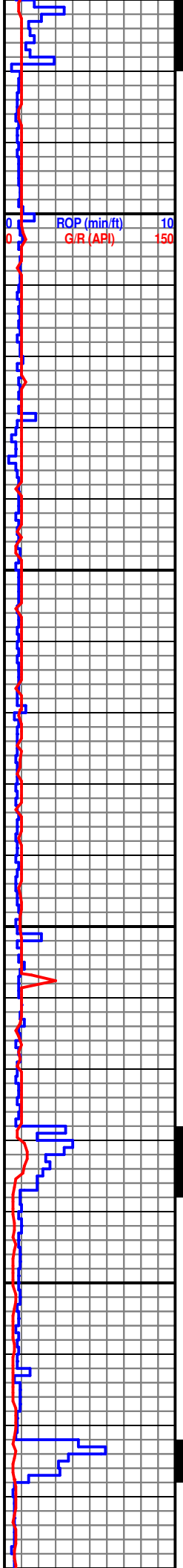


SANDRIDGE SCALE CHANGE 0-500 10H 500

SANDRIDGE ENERGY BRYANT 3508 3-10H 500 OIL G 0.0001

8/13/2013

MD 5587 TVD 4833.95
INC 88.5 AZ 182



ROP (min/ft) 10
G/R (API) 150

MD 5619 TVD 4834.73
INC 88.7 AZ 183.1

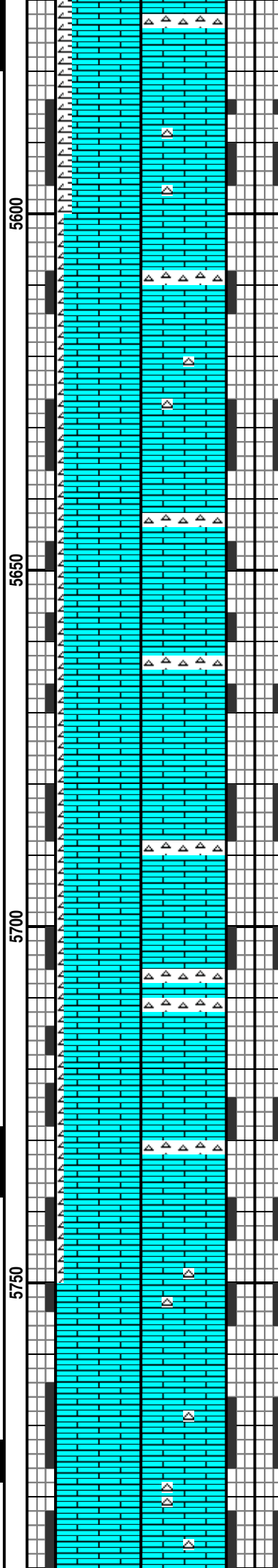
MD 5651 TVD 4835.27
INC 89.4 AZ 182.9

MD 5682 TVD 4835.37
INC 90.2 AZ 183.3

MD 5714 TVD 4834.98
INC 91.2 AZ 183.1

8/14/2013

MD 5767 TVD 4834.94
INC 88.9 AZ 183.1



MOTT, FN-V/FN XLN, SM MED,
MSTLY BLKY - CHNKY, OCC
PLTY, SLI FRM - SFT, OCC HRD,
PRED PP POR, SM VUG POR,
SLO MLKY GRN CUT , THIN
GRN RING

LS: CRM -TAN , SM TAN MOTT,
FN-V/FN XLN, SM MED, MSTLY
BLKY - CHNKY, OCC PLTY, SLI
FRM - SFT, OCC HRD, PRED PP
POR, SM VUG POR, SLO MLKY
GRN CUT , THIN GRN RING

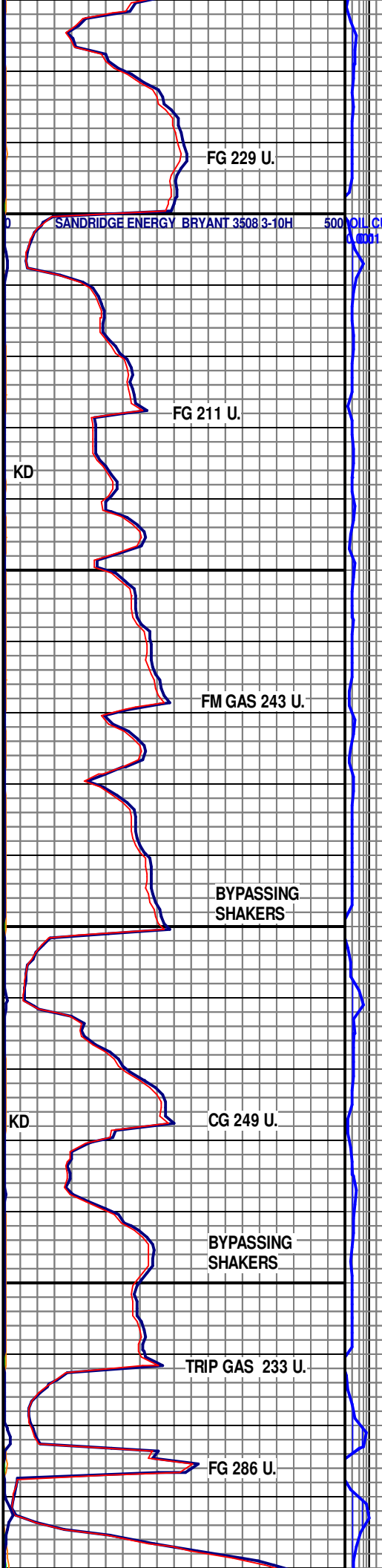
LS: PRED CRM -TAN , SM TAN
MOTT, FN-V/FN XLN, SM MED,
MSTLY BLKY - CHNKY, OCC
PLTY, SLI FRM - SFT, OCC HRD,
PRED PP POR, SM VUG POR,
SLO MLKY GRN CUT , THIN
SPOTTY YEL RING

LS: MSTLY CRM -TAN , TAN
MOTT ,FN-V/FN XLN, SM MED,
MSTLY BLKY - CHNKY, OCC
PLTY, SLI FRM - SFT, OCC HRD,
PRED PP POR, SM VUG POR,
SLO MLKY GRN CUT , LRG
YEL RES RING

**T.D. @ 5,762' FOR 7"
INTERMEDIATE
CASING & P/U NEW
RHA**

**N/BIT#5 ,6.125, PDC,
MMD64C, 12240953,
6X14'S**

LS: PRED CRM-TAN , WHT-OFF
WHT, OCC LT GY, FN-V FN XLN,
PRED CHNKY-BLKY, FRM-V
HRD, PR VUG POR, PR VUG ,



FG 229 U.

SANDRIDGE ENERGY BRYANT 3508 3-10H

FG 211 U.

KD

FM GAS 243 U.

BYPASSING SHAKERS

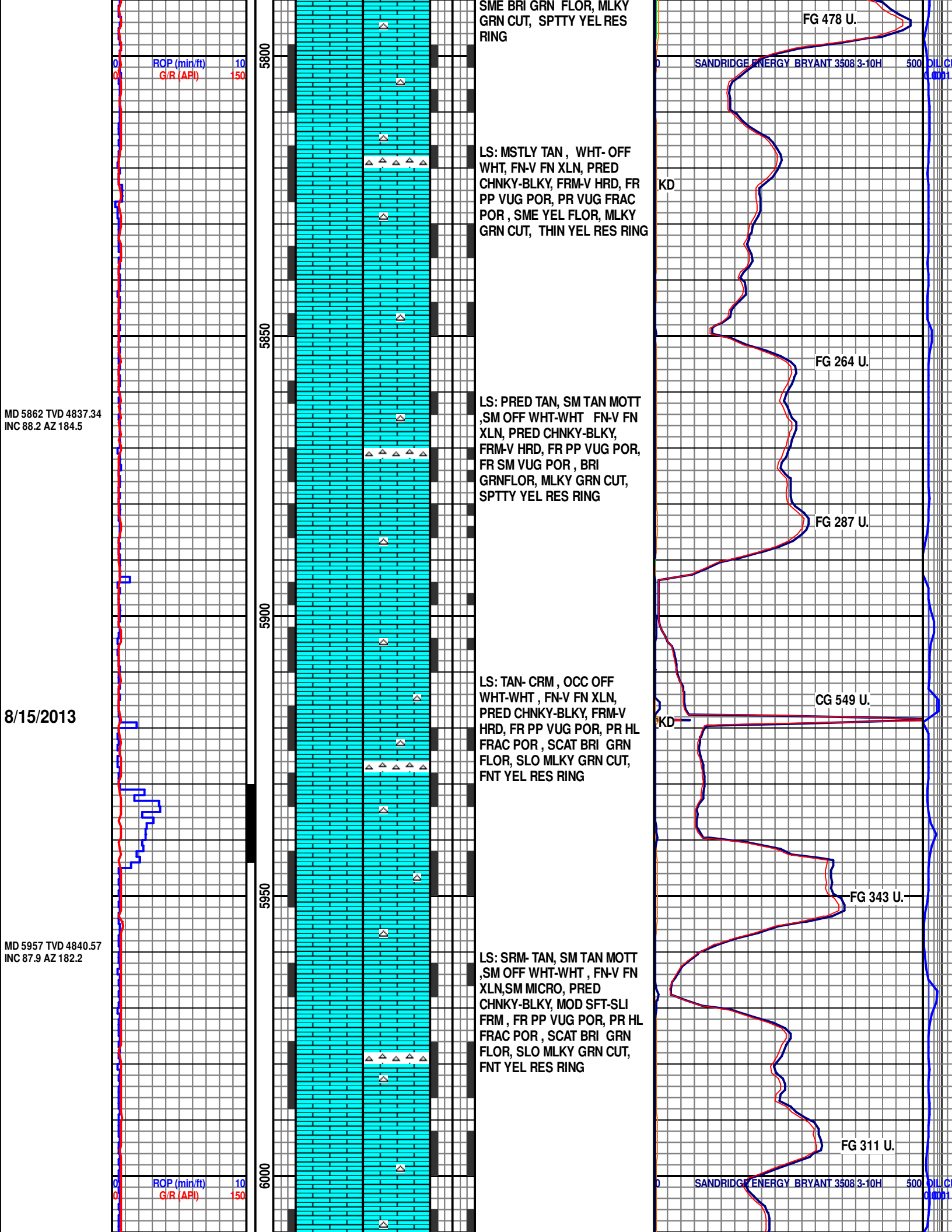
KD

CG 249 U.

BYPASSING SHAKERS

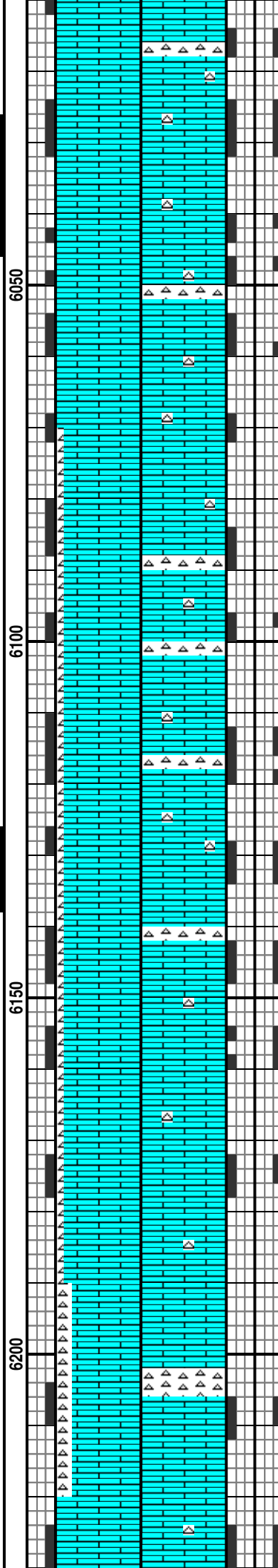
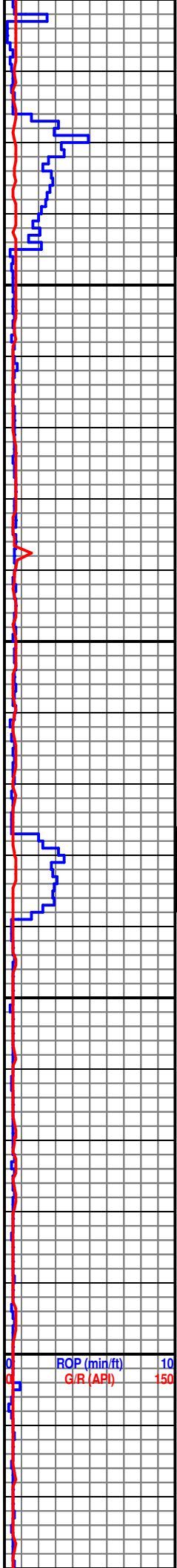
TRIP GAS 233 U.

FG 286 U.



MD 6053 TVD 4842.75
INC 89.5 AZ 179.3

MD 6147 TVD 4842.42
INC 90.9 AZ 178



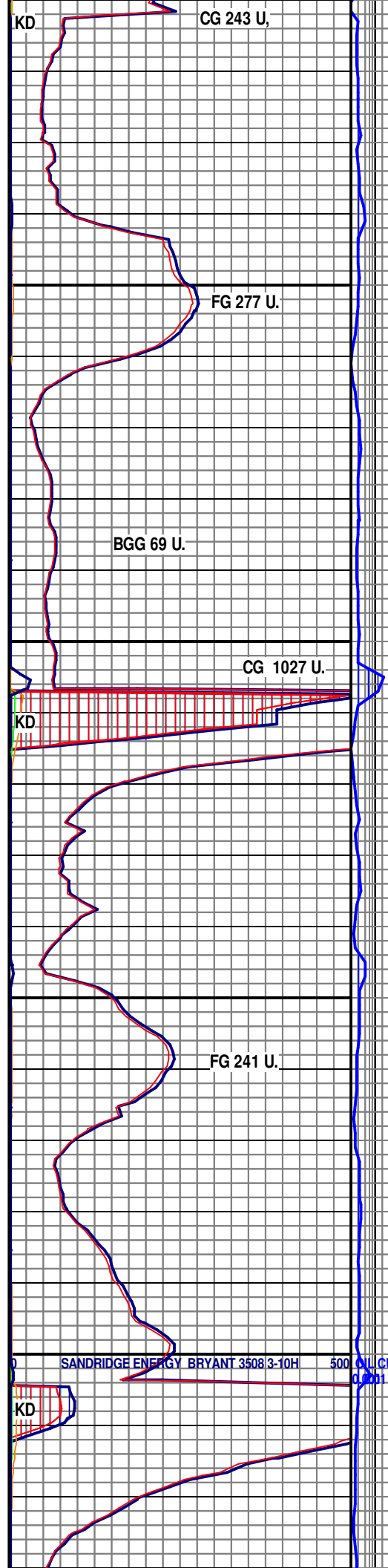
LS: PRED CRM- TAN, SM TAN
MOTT ,SM OFF WHT-WHT ,
FN-V FN XLN, CHNKY-BLKY,
SLI FRM-MOD SFT ,OCC BRTL,
FR PP VUG POR, SCAT BRI
GRN FLOR, FR MLKY GRN
CUT, THIN SPTTY YEL RES
RING

LS: PRED CRM- TAN, SM TAN
MOTT ,SM OFF WHT-WHT ,
FN-V FN XLN, CHNKY-BLKY,
SLI FRM-MOD SFT ,OCC BRTL,
FR PP VUG POR, SCAT BRI
GRN FLOR, NO VIS CUT ,NO
RES RING

LS:TAN-CRM, OFFWHT-WHT
,FN-V FN XLN, PRED CHNKY,
SME PLTY, MOD FRM-HRD, SM
SLI FRM -MOD SFT, OCC
BRTLSME FR VUG POR, TRC
HL FRAC POR,SCAT BRI GRN
FLOR , FR MLKY GRN CUT,
LRG YEL RES RING

LS: ABUN TAN- CRM, OCC LT
CRM, FN- V FN XLN, PRED
BLKY, FRM-V HRD, PR-FR VUG
POR, PR HL FRAC POR,
ABDNT YEL-GLD FLOR, NO
CUT, NO RES RING

LS: MSTLY CRM, OCC LT CRM,
FN-V FN XLN, PRED
CHNKY-BLKY, FRM-V HRD,
PR-FR VUG POR, PR HL FRAC
POR , ABDNT YEL-GLD FLOR,
NO CUT, NO RES RING

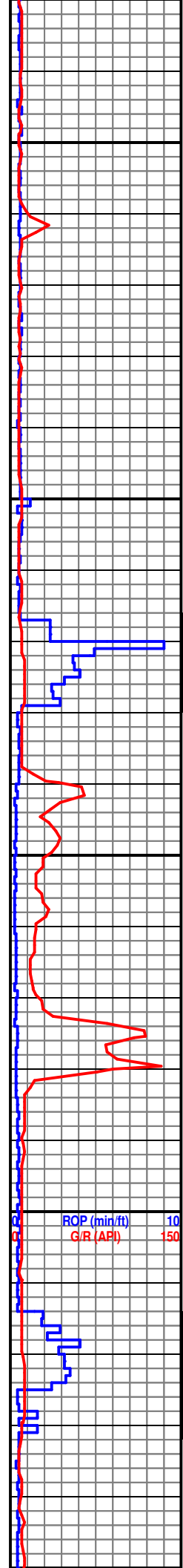


SANDRIDGE ENERGY BRYANT 3508 3-10H

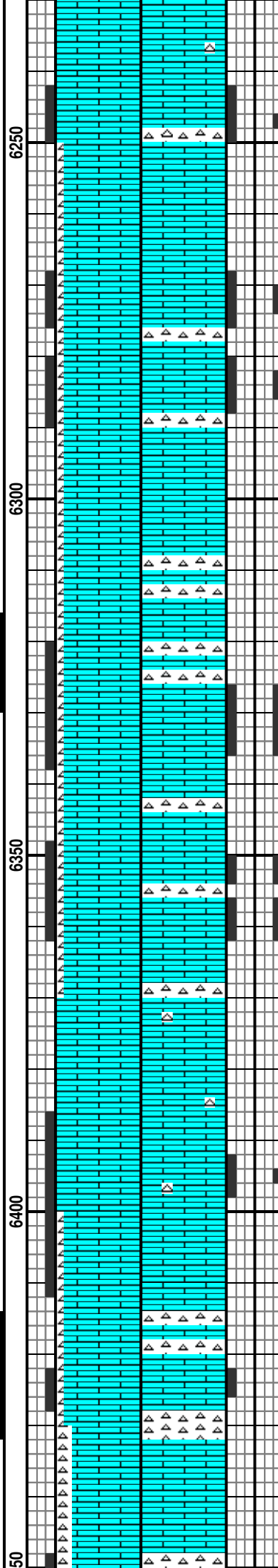
MD 6242 TVD 4840.02
INC 92 AZ 177.2

MD 6337 TVD 4837.28
INC 91.3 AZ 178.3

MD 6431 TVD 4836.22
INC 90 AZ 179.8



ROP (min/ft)	10
G/R (API)	150

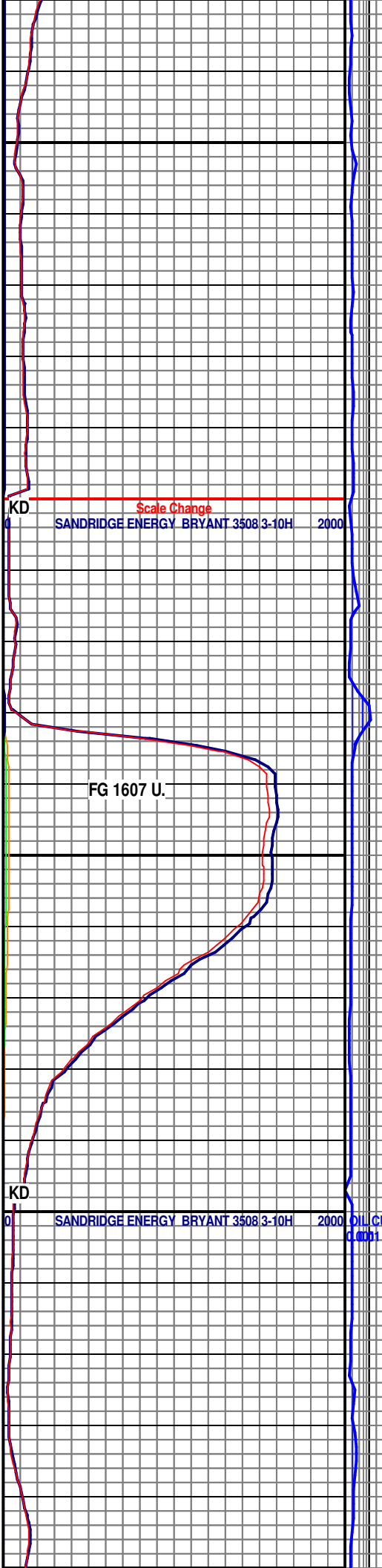


LS: PRED CRM- TAN, SM TAN
MOTT ,SM OFF WHT-WHT ,
FN-V FN XLN, CHNKY-BLKY,
SLI FRM-MOD SFT ,OCC BRTL,
FR PP VUG POR, SCAT BRI
GRN FLOR, NO VIS CUT ,NO
RES RING

LS: MSTLY CRM, OCC LT CRM,
FN-V FN XLN, PRED
CHNKY-BLKY, FRM-V HRD,
PR-FR VUG POR, PR HL FRAC
POR , ABDNT YEL-GLD FLOR,
NO CUT, NO RES RING

LS: ABUN TAN- CRM, OCC LT
CRM, FN- V FN XLN, PRED
BLKY, FRM-V HRD, PR-FR VUG
POR, PR HL FRAC POR,
ABDNT YEL-GLD FLOR, NO
CUT, NO RES RING

LS: PRED CRM- TAN, SM TAN
MOTT ,SM OFF WHT-WHT ,
FN-V FN XLN, CHNKY-BLKY,
SLI FRM-MOD SFT ,OCC BRTL,
FR PP VUG POR, SCAT BRI
GRN FLOR, NO VIS CUT ,NO
RES RING



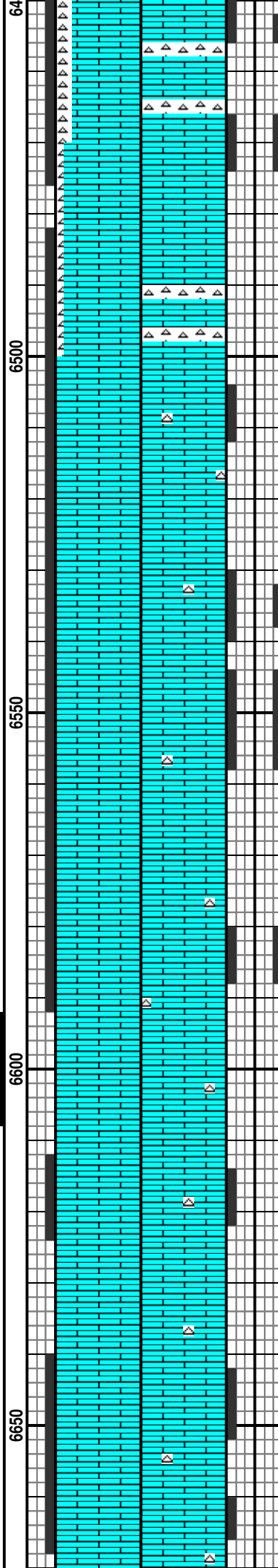
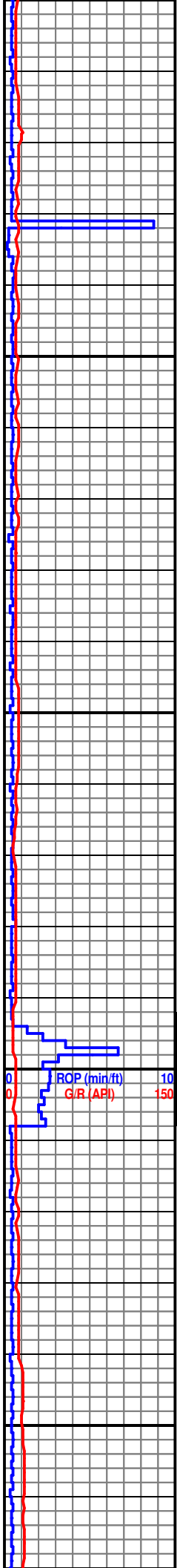
Scale Change
SANDRIDGE ENERGY BRYANT 3508 3-10H 2000

FG 1607 U.

SANDRIDGE ENERGY BRYANT 3508 3-10H 2000

MD 6525 TVD 4835.23
INC 91.2 AZ 180.1

MD 6620 TVD 4833.91
INC 90.4 AZ 180.7



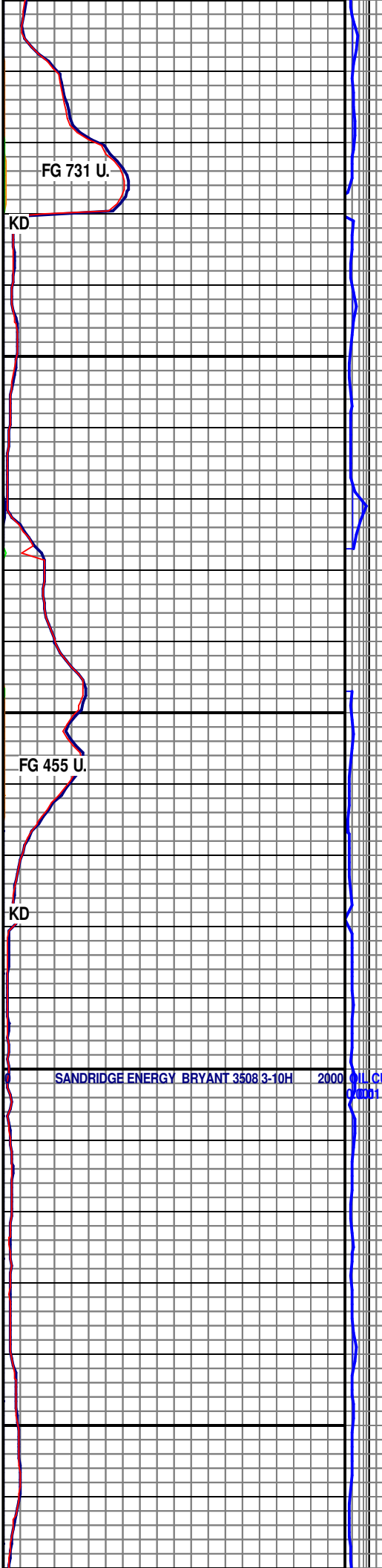
LS: MSTLY CRM, OCC LT CRM,
FN-V FN XLN, PRED
CHNKY-BLKY, FRM-V HRD,
PR-FR VUG POR, PR HL FRAC
POR , ABDNT YEL-GLD FLOR,
NO CUT, NO RES RING

LS: ABUN TAN- CRM, OCC LT
CRM, FN- V FN XLN, PRED
BLKY, FRM-V HRD, PR-FR VUG
POR, PR HL FRAC POR,
ABDNT YEL-GLD FLOR, NO
CUT, NO RES RING

LS: PRED CRM- TAN, SM TAN
MOTT ,SM OFF WHT-WHT ,
FN-V FN XLN, CHNKY-BLKY,
SLI FRM-MOD SFT ,OCC BRTL,
FR PP VUG POR, SCAT BRI
GRN FLOR, NO VIS CUT ,NO
RES RING

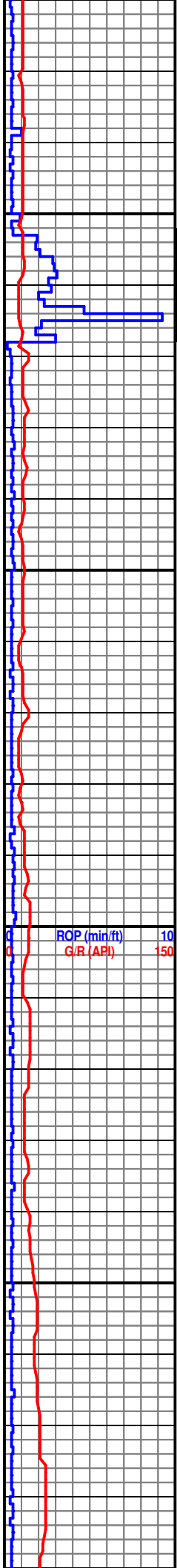
LS: MSTLY TAN- LT CRM, FN-V
FN XLN, PRED CHNKY-BLKY,
FRM-V HRD, PR VUG POR, PR
HL FRAC POR , SME YEL
FLOR, NO CUT, NO RES RING

LS: PRED CRM, FN- V FN XLN,

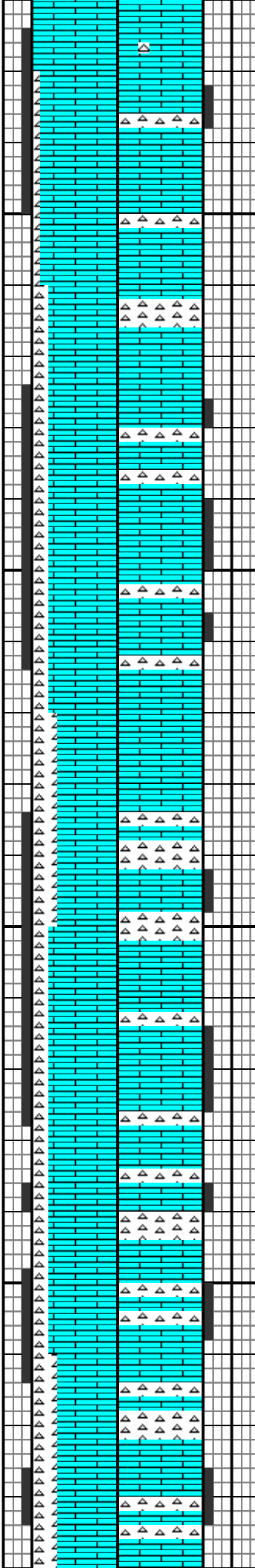


MD 6715 TVD 4834.4
INC 89 AZ 180.3

MD 6810 TVD 4835.73
INC 89.4 AZ 181.4



6700
6750
6800
6850



PRED BLKY, FRM-V HRD,
PR-FR VUG POR, PR HL FRAC
POR, ABDNT YEL-GLD FLOR,
NO CUT, NO RES RING

LS: MSTLY TAN- LT CRM, FN-V
FN XLN, PRED CHNKY-BLKY,
FRM-V HRD, PR VUG POR, PR
HL FRAC POR, SME YEL
FLOR, NO CUT, NO RES RING

LS: ABUN CRM, FN- V FN XLN,
PRED BLKY, FRM-V HRD,
PR-FR VUG POR, PR HL FRAC
POR, ABDNT YEL-GLD FLOR,
NO CUT, NO RES RING

LS: PRED CRM, FN- V FN XLN,
PRED BLKY, FRM-V HRD,
PR-FR VUG POR, PR HL FRAC
POR, ABDNT YEL-GLD FLOR,
NO CUT, NO RES RING

LS: ABUN CRM, BRN, FN- V FN
XLN, PRED CHNKY, SCAT
BLKY, FRM-V HRD, PR VUG
POR, PR HL FRAC POR, ABUN
YEL FLOR, BRI WHT FLASH
CUT, NO RES RING

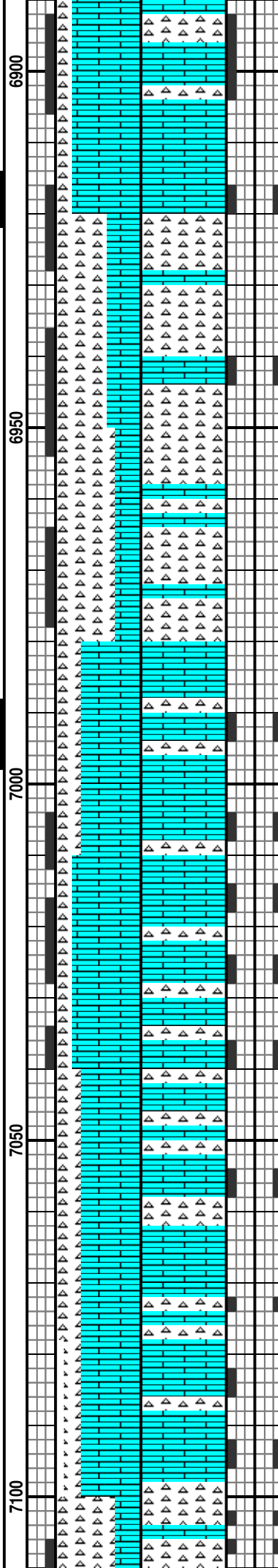
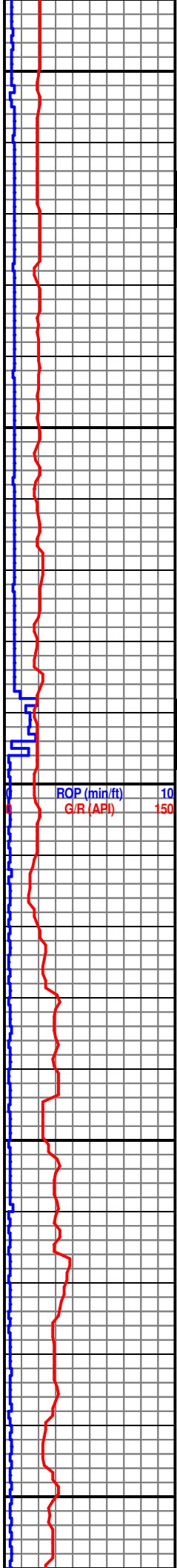
KD
KD
KD

SANDRIDGE ENERGY BRYANT 3508 3-10H 2000 OIL G
C 0001

MD 6905 TVD 4836.48
INC 89.7 AZ 182

MD 7000 TVD 4839.05
INC 87.2 AZ 182.4

MD 7094 TVD 4842.41
INC 88.7 AZ 183.6



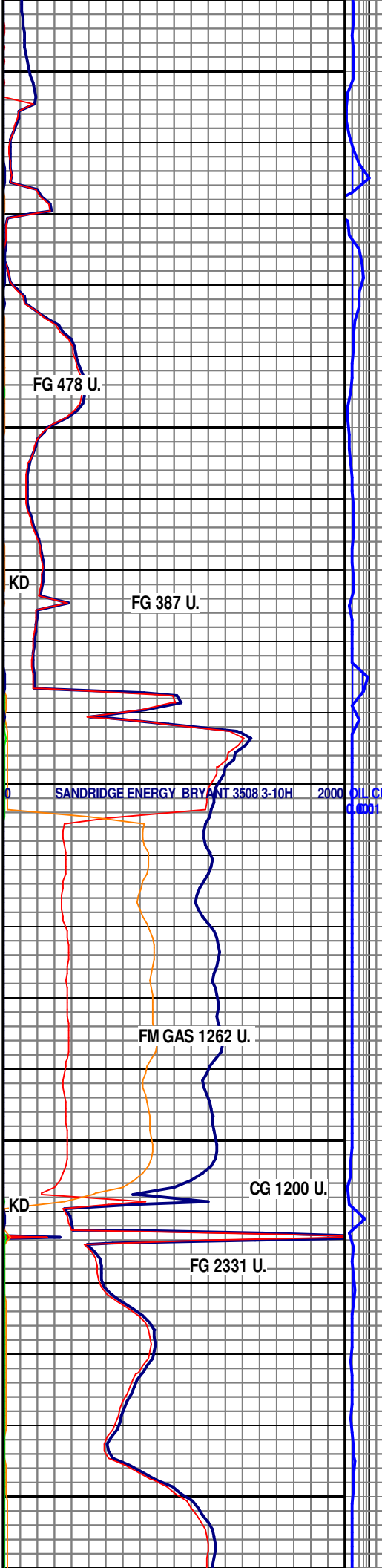
CHERT: ABUN TRANS-WHT,
SME OPQ, V HRD-BRTL, BLKY,
V PR HL FRAC POR, W/ LS:
TN-CRM, FRM-HRD, PR HL
FRAC POR, TR GLD FLOR,
MILKY WHT FLASH CUT, NO
RES RING.

CHERT: PRED TRANS-WHT,
SME LT GY, V HRD-BRTL,
BLKY, V PR HL FRAC POR, W/
LS: TN-CRM, FRM-HRD, PR HL
FRAC POR, TR GLD FLOR,
WHT MLKY FLASH CUT, NO
RES RING.

LS: ABUN WHT-OFF WHT, OCC
LT GY, FN- V FN XLN, PRED
CHNKY, SCAT BLKY, FRM-V
HRD, PR-FR VUG POR, PR HL
FRAC PORTR GLD FLOR,
MILKY WHT FLASH CUT, NO
RES RING.

LS: ABUN WHT-OFF WHT, OCC
LT GY, FN- V FN XLN, PRED
CHNKY, SCAT BLKY, FRM-V
HRD, PR-FR VUG POR, PR HL
FRAC PORTR GLD FLOR,
MILKY GRN CUT,

CHERT: PRED TRANS-WHT,

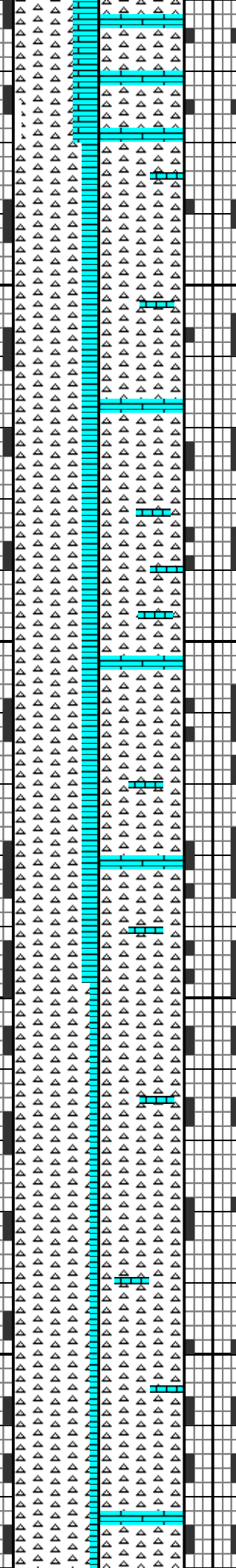


MD 7189 TVD 4842.24
INC 91.5 AZ 185.3

ROP (min/ft) 10
G/R (API) 150

MD 7284 TVD 4841.17
INC 89.8 AZ 184.8

7150
7200
7250
7300



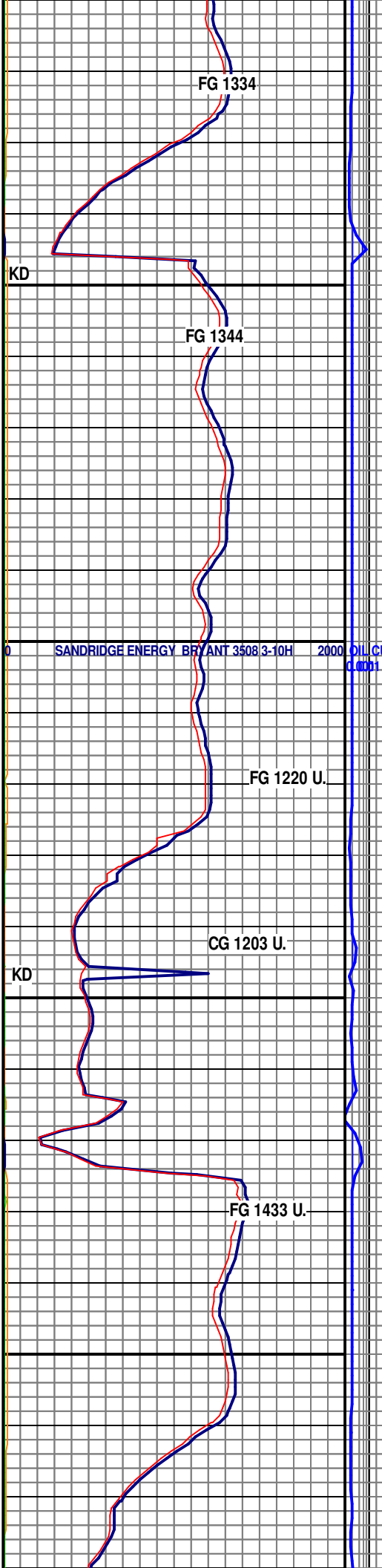
SME OPQ, SME LT GY-TAN , V
HRD-BRTL, BLKY, SUB
ANG-ANG , V PR HL FRAC
POR, W/ LS: TN-CRM,
FRM-HRD, PR HL FRAC POR,
TRC GRN FLOR,MLKY GRN
CUT , NO RES RING.

CHERT: PRED TRANS-WHT,
SME OPQ, SME LT GY-TAN , V
HRD-BRTL, BLKY, SUB
ANG-ANG , V PR HL FRAC
POR, W/ LS: TN-CRM,
FRM-HRD, PR HL FRAC POR,
TRC BRI GRN FLOR,FR MLKY
GRN CUT , THIN SPTTY YEL
RES RING

CHERT: PRED TRANS-WHT,
SME OPQ,OCC CLR , SME LT
GY-TAN , V HRD-BRTL, BLKY,
SUB ANG-ANG , V PR HL FRAC
POR, W/ LS: TN-CRM,
FRM-HRD, PR HL FRAC POR,
SCAT BRI GRN FLOR,FR
MLKY GRN CUT , THIN SPTTY
YEL RES RING

CHERT: PRED TRANS-WHT,
SME OPQ, SME LT GY-TAN , V
HRD-BRTL, BLKY, SUB ANG
,VRY CALC, V PR HL FRAC
POR, W/TRC LS: TN-CRM,
FRM-HRD, MSTLY PP POR,
SCAT BRI GRN FLOR FLOR,FR
MLKY GRN CUT , THIN SPTTY
YEL RES RING

CHERT: PRED TRANS-WHT,
SME OPQ, SME LT GY-TAN , V
HRD-BRTL, BLKY, SUB ANG
,VRY CALC, V PR HL FRAC
POR, W/TRC LS: TN-CRM,
FRM-HRD, MSTLY PP POR,
SCAT BRI GRN FLOR

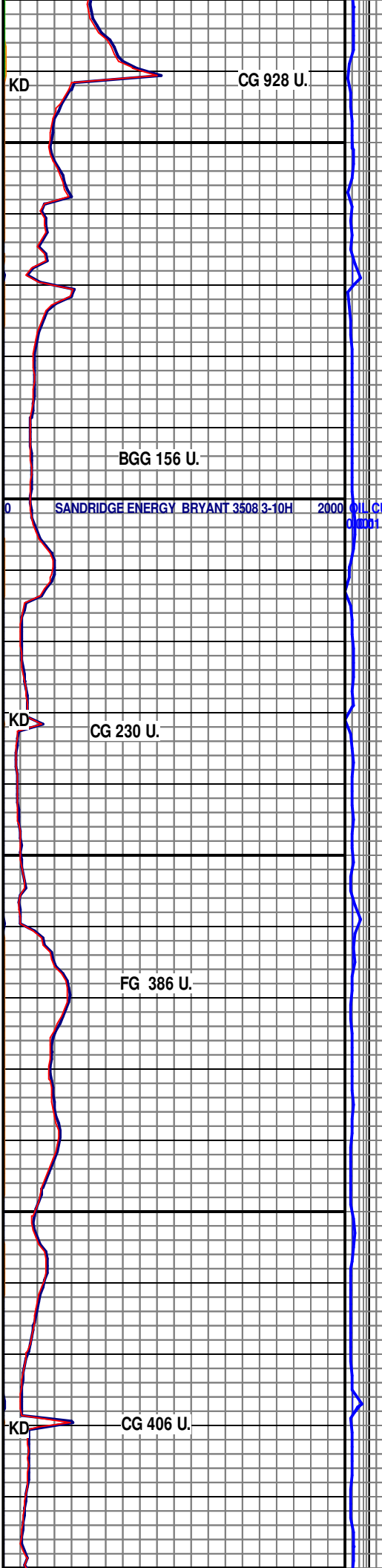
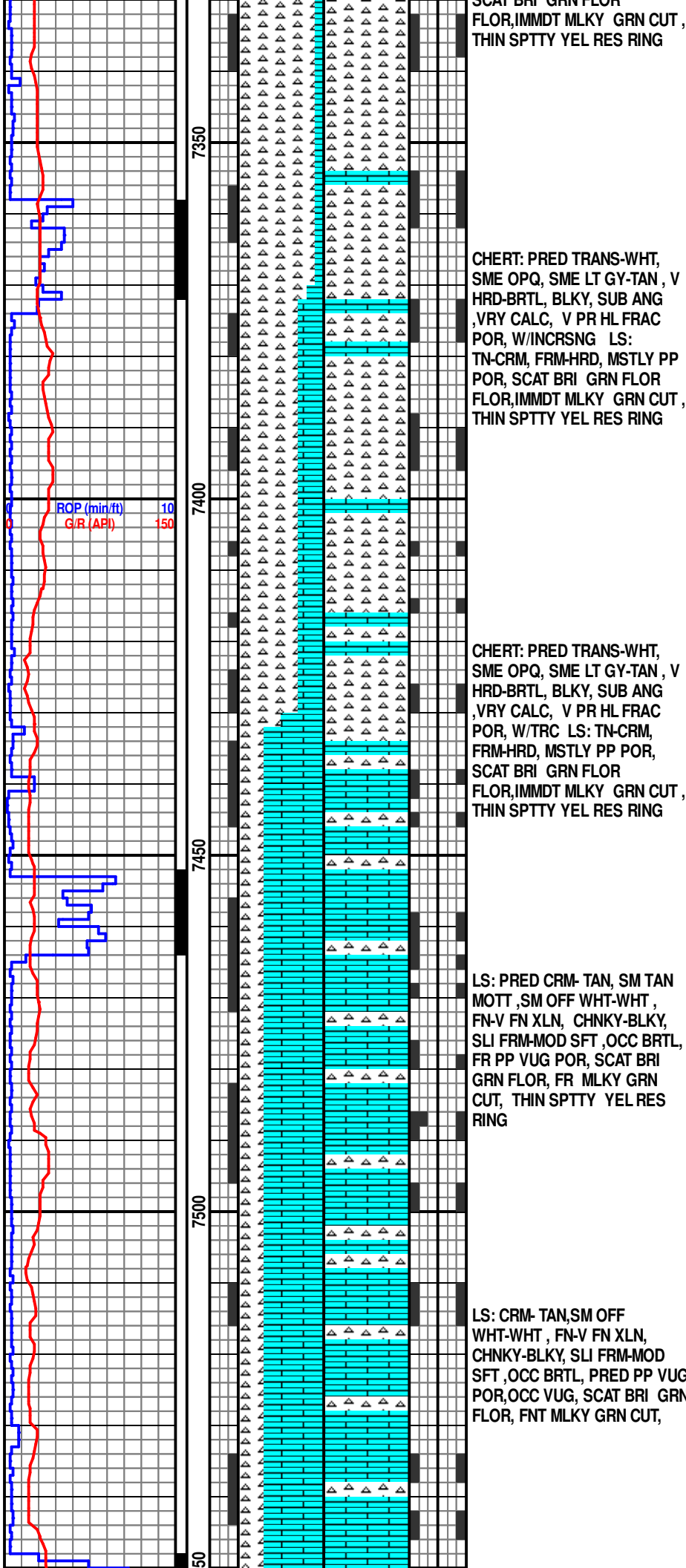


MD 7379 TVD 4844.23
INC 86.5 AZ 181.4

ROP (min/ft) 10
G/R (API) 150

MD 7474 TVD 4848.46
INC 88.4 AZ 180

8/16/2013



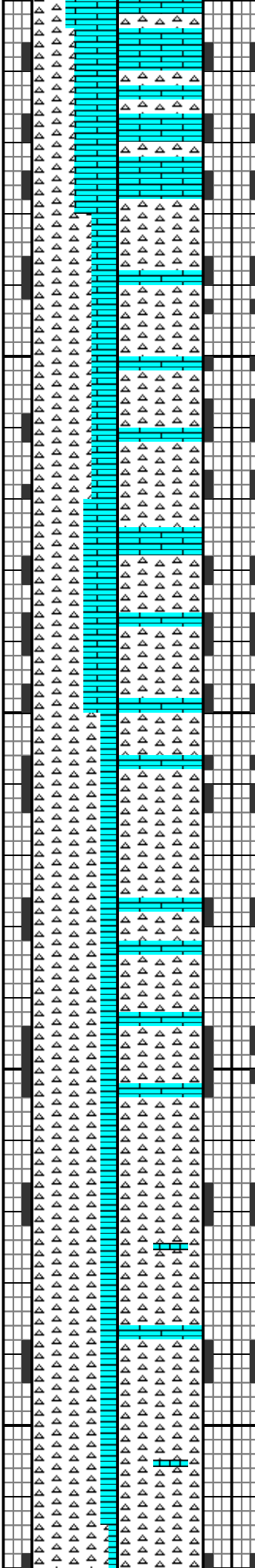
MD 7568 TVD 4848.21
INC 91.9 AZ 181.2

ROP (min/ft) 10
G/R (API) 150

MD 7663 TVD 4846.72
INC 89.9 AZ 177.8

MD 7758 TVD 4846.56
INC 90.3 AZ 179.2

75
7600
7650
7700
7750



CHERT: PRED TRANS-WHT,
SME OPQ, SME LT GY-TAN , V
HRD-BRTL, BLKY, SUB ANG
,VRY CALC, V PR HL FRAC
POR, W/TRC LS: TN-CRM,
FRM-HRD, MSTLY PP POR,
SCAT BRI GRN FLOR
FLOR,IMMDT MLKY GRN CUT ,
THIN SPTTY YEL RES RING

CHERT: MSTLY TRANS-WHT,
SME OPQ, SME LT GY-TAN , V
HRD-BRTL, BLKY, SUB ANG
,VRY CALC, V PR HL FRAC
POR, W/TRC LS: TN-CRM,
FRM-HRD, MSTLY PP POR,
SCAT BRI GRN FLOR
FLOR,IMMDT MLKY GRN CUT ,
THIN SPTTY YEL RES RING

CHERT: TRANS-WHT, SME
OPQ, SME LT GY-TAN , V
HRD-BRTL, BLKY, SUB ANG
,VRY CALC, V PR HL FRAC
POR, W/TRC LS: TN-CRM,
FRM-HRD, MSTLY PP POR,
SCAT BRI GRN FLOR
FLOR,IMMDT MLKY GRN CUT ,
THIN SPTTY YEL RES RING

CHERT: MSTLY TRANS-WHT,
SME OPQ, SME LT GY-TAN , V
HRD-BRTL, BLKY, SUB ANG
,VRY CALC, V PR HL FRAC
POR, W/TRC LS: TN-CRM,
FRM-HRD, MSTLY PP POR,
SCAT BRI GRN FLOR
FLOR,IMMDT MLKY GRN CUT ,
THIN SPTTY YEL RES RING

CHERT: TRANS-WHT, SME
OPQ, SME LT GY-TAN , V
HRD-BRTL, BLKY, SUB ANG

FG 1313 U.

FG 1505 U.

CG 1373

FG 1651 U.

FM GAS 1798

SANDRIDGE ENERGY BRYANT 3508 3-10H 2000

KD

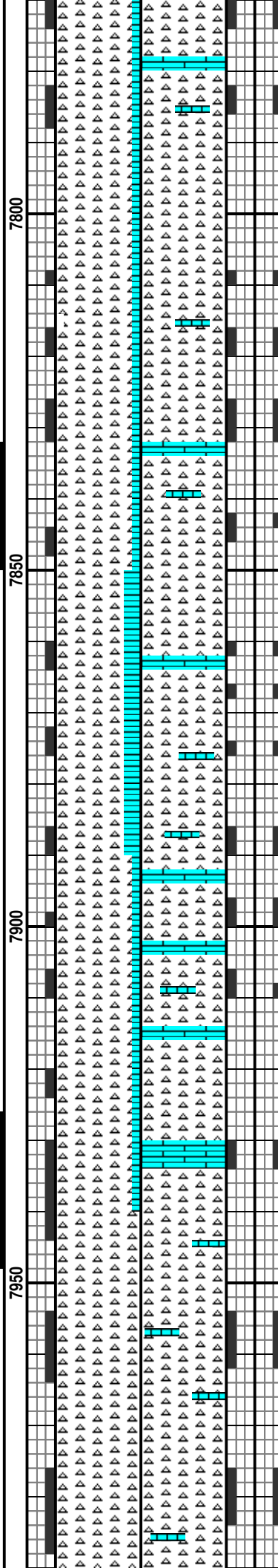
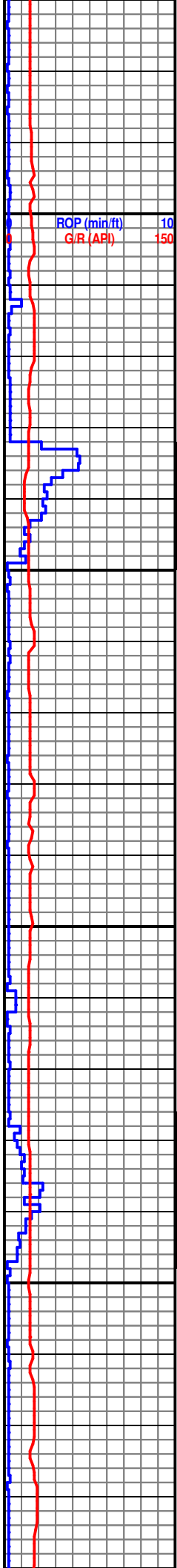
KD

DIL G

4001

MD 7853 TVD 4847.63
INC 88.4 AZ 176.6

MD 7947 TVD 4848.54
INC 90.5 AZ 177.8



HRD-BRTL, BLKY, SUB ANG
, VRY CALC, V PR HL FRAC
POR, W/TRC LS: TN-CRM,
FRM-HRD, MSTLY PP POR,
SCAT BRI GRN FLOR
FLOR,SLO MLKY GRN CUT ,
THIN SPTTY YEL RES RING

CHERT: PRED TRANS-WHT,
SME OPQ,SCAT OFF WHT-TAN
, V HRD-BRTL, BLKY, SUB ANG
, VRY CALC, V PR HL FRAC
POR, W/TRC LS: TN-CRM,
FRM-HRD, MSTLY PP POR,
SCAT BRI GRN FLOR
FLOR,IMMDT MLKY GRN CUT ,
THIN YEL RES RING

CHERT: TRANS-WHT, SME
OPQ,SCAT OFF WHT-TAN , V
HRD-BRTL, BLKY, SUB ANG
,SLI CALC, PR HL FRAC POR,
W/TRC LS: TN-CRM, FRM-HRD,
MSTLY PP POR, SCAT BRI
GRN FLOR FLOR ,IMMDT MLKY
YEL-WHT CUT , LRG YEL RES
RING

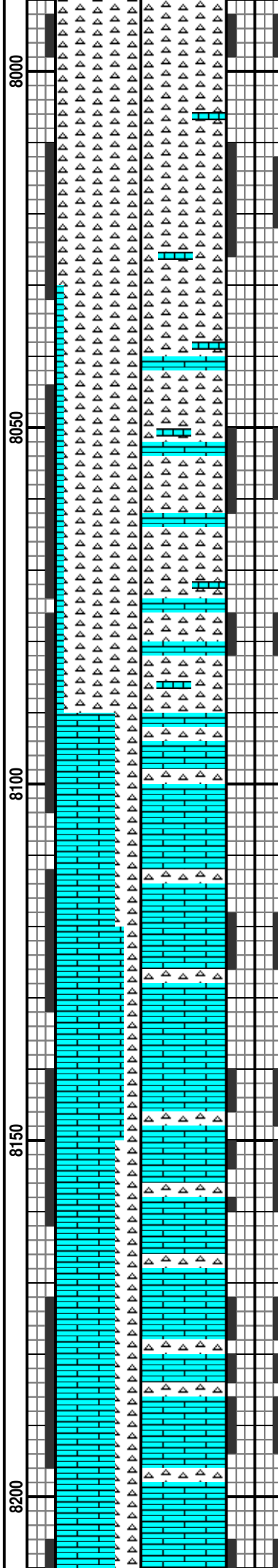
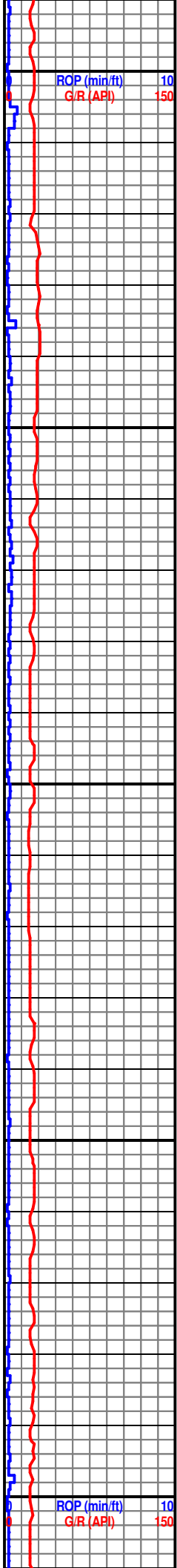
CHERT: ABUN TRANS-WHT,
SME OPQ, V HRD-BRTL, BLKY,
V PR HL FRAC POR, W/ LS:
TN-CRM, FRM-HRD, PR HL
FRAC POR, TR GLD FLOR,
MILKY WHT FLASH CUT, NO
RES RING.

CHERT: PRED TRANS-WHT,
SME LT GY, V HRD-BRTL,
BLKY, V PR HL FRAC POR, W/
LS: TN-CRM, FRM-HRD, PR HL
FRAC POR, TR GLD FLOR,
WHT MLKY FLASH CUT, NO
RES RING.



MD 8042 TVD 4847.46
INC 90.8 AZ 175.6

MD 8138 TVD 4847.71
INC 88.9 AZ 174.9

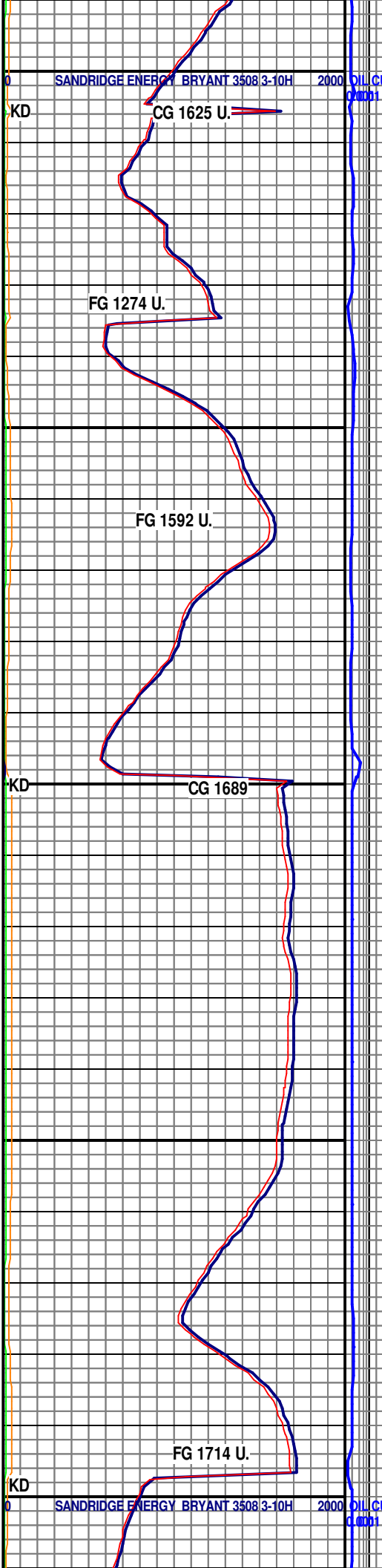


CHERT: ABUN TRANS-WHT,
SME OPQ, V HRD-BRTL, BLKY,
V PR HL FRAC POR, W/ LS:
TN-CRM, FRM-HRD, PR HL
FRAC POR, TR GLD FLOR,
MILKY WHT FLASH CUT, NO
RES RING.

CHERT: PRED TRANS-WHT,
SME LT GY, V HRD-BRTL,
BLKY, V PR HL FRAC POR, W/
LS: TN-CRM, FRM-HRD, PR HL
FRAC POR, TR GLD FLOR,
WHT MLKY FLASH CUT, NO
RES RING.

LS: ABUN TAN- CRM, OCC LT
CRM, FN- V FN XLN, PRED
BLKY, FRM-V HRD, PR-FR VUG
POR, PR HL FRAC POR,
ABDNT YEL-GLD FLOR, NO
CUT, NO RES RING

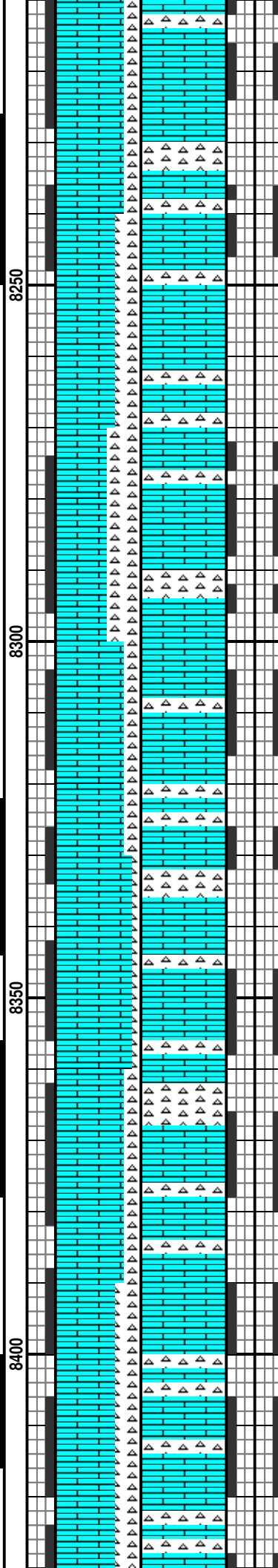
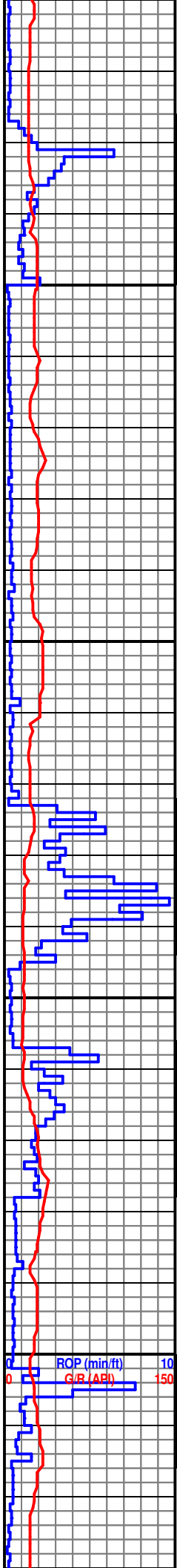
LS: PRED CRM, FN- V FN XLN,
PRED BLKY, FRM-V HRD,
PR-FR VUG POR, PR HL FRAC
POR, ABDNT YEL-GLD FLOR,
NO CUT, NO RES RING



MD 8233 TVD 4850.03
INC 88.3 AZ 174.1

MD 8328 TVD 4853.43
INC 87.6 AZ 173.5

MD 8423 TVD 4852.27
INC 93.8 AZ 174.4



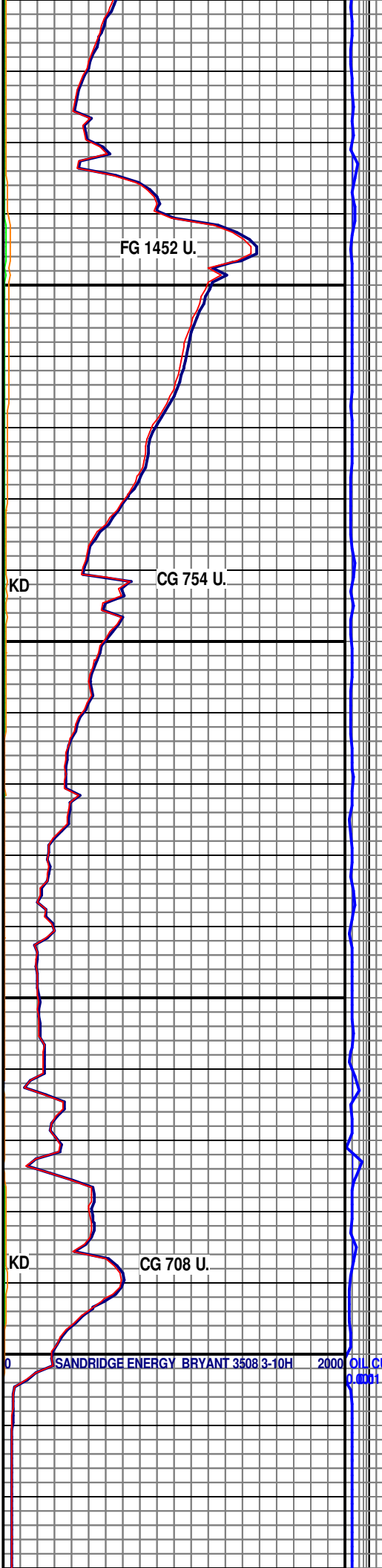
LS: ABUN TAN- CRM, OCC LT
CRM, FN- V FN XLN, PRED
BLKY, FRM-V HRD, PR-FR VUG
POR, PR HL FRAC POR,
ABDNT YEL-GLD FLOR, NO
CUT, NO RES RING

LS: CRM- TAN, SM OFF
WHT-WHT , FN-V FN XLN,
CHNKY-BLKY, SLI FRM-MOD
SFT , OCC BRTL, PRED PP VUG
POR, OCC VUG, SCAT BRI GRN
FLOR, FNT MLKY GRN CUT, NO
RES RING

LS: PRED CRM, FN- V FN XLN,
PRED BLKY, FRM-V HRD,
PR-FR VUG POR, PR HL FRAC
POR, ABDNT YEL-GLD FLOR,
NO CUT, NO RES RING

LS: MSTLY CRM- TAN, OCC
OFF WHT-WHT , FN-V FN XLN,
CHNKY-BLKY, SLI FRM-MOD
SFT , OCC BRTL, PRED PP VUG
POR, OCC VUG, SCAT BRI GRN
FLOR, FNT MLKY GRN CUT, NO
RES RING

LS: PRED TAN- CRM, OCC LT
CRM, FN- V FN XLN, PRED
BLKY, FRM-V HRD, PR-FR VUG
POR, PR HL FRAC POR,
ABDNT YEL-GLD FLOR. NO

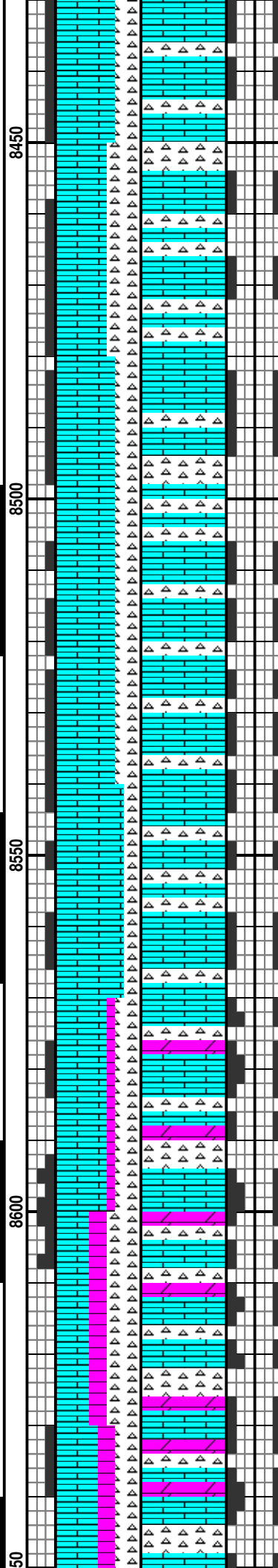
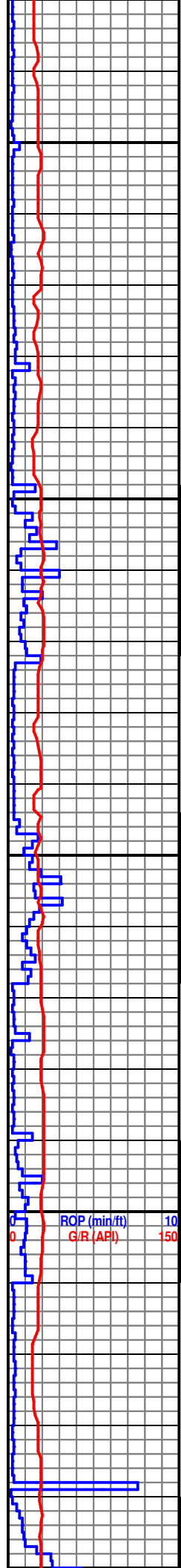


ROP (min/ft) 10
G/R (API) 150

SANDRIDGE ENERGY BRYANT 3508 3-10H 2000 OIL (C) 0.0001

MD 8517 TVD 4850.96
INC 87.8 AZ 173.9

MD 8612 TVD 4852.7
INC 90.1 AZ 176.1



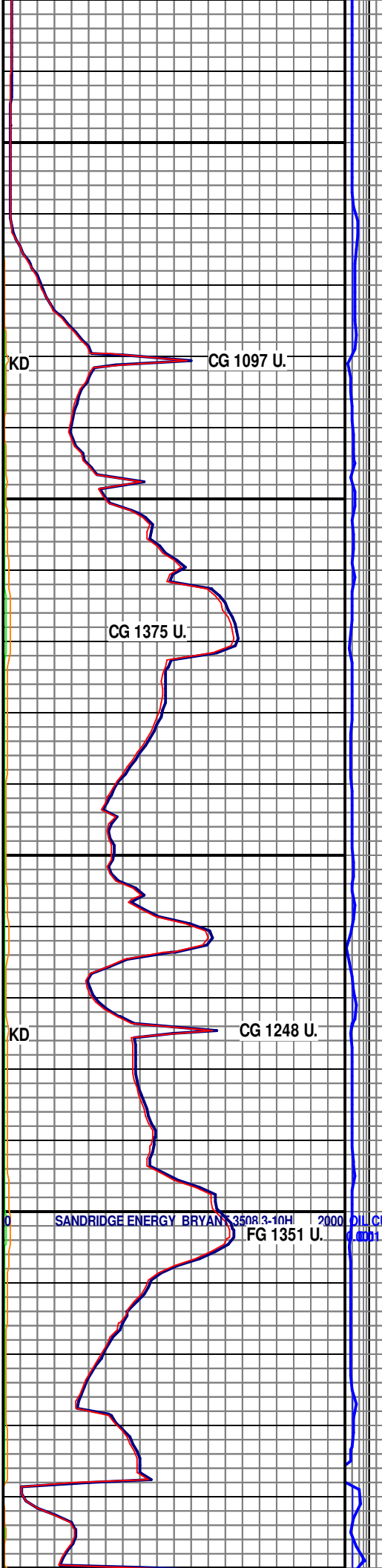
CUT, NO RES RING

LS: ABUN CRM- TAN , FN-V FN
XLN, CHNKY-BLKY, SLI
FRM-MOD SFT ,OCC BRTL,
PRED PP VUG POR,OCC VUG,
SCAT BRI GRN FLOR, FNT
MLKY GRN CUT, NO RES RING

LS: MSTLY CRM- TAN, OCC
OFF WHT-WHT , FN-V FN XLN,
CHNKY-BLKY, SLI FRM-MOD
SFT ,OCC BRTL, PRED PP VUG
POR,OCC VUG, SCAT BRI GRN
FLOR, FNT MLKY GRN CUT, NO
RES RING

LS: ABUN DRK TAN-LT BRN,
SME CRM, FN-V FN XLN,
CHNKY-BLKY, SLI FRM-MOD
SFT, OCC BRTL, PRED PP VUG
POR, OCC VUG, ABUN BRI
GRN FLOR, FNT MLKY GRN
CUT, NO RES RING

LS: PRED DRK TAN-LT BRN,
SME CRM, FN-V FN XLN,
CHNKY-BLKY, SLI FRM-MOD
SFT ,OCC BRTL, PRED PP VUG
POR, OCC VUG, ABUN BRI
GRN FLOR, FNT MLKY GRN
CUT, NO RES RING

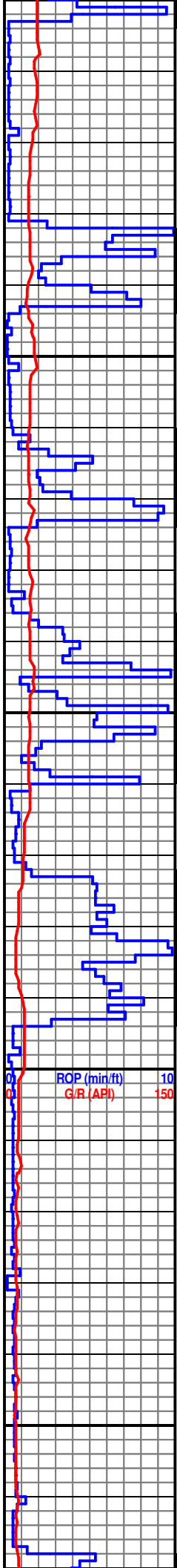


SANDRIDGE ENERGY BRYAN 350813-10H 2000 DIL C
FG 1351 U. (001)

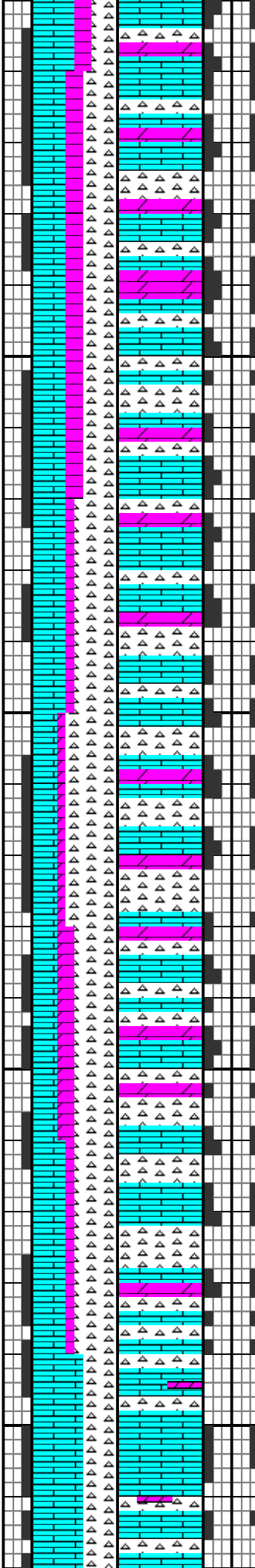
MD 8707 TVD 4852.86
INC 89.7 AZ 172.2

WOB: 104.9
RPM: 50
GPM: 262
SPM: 66

MD 8802 TVD 4850.38
INC 93.3 AZ 179.95



86
8700
8750
8800
8850



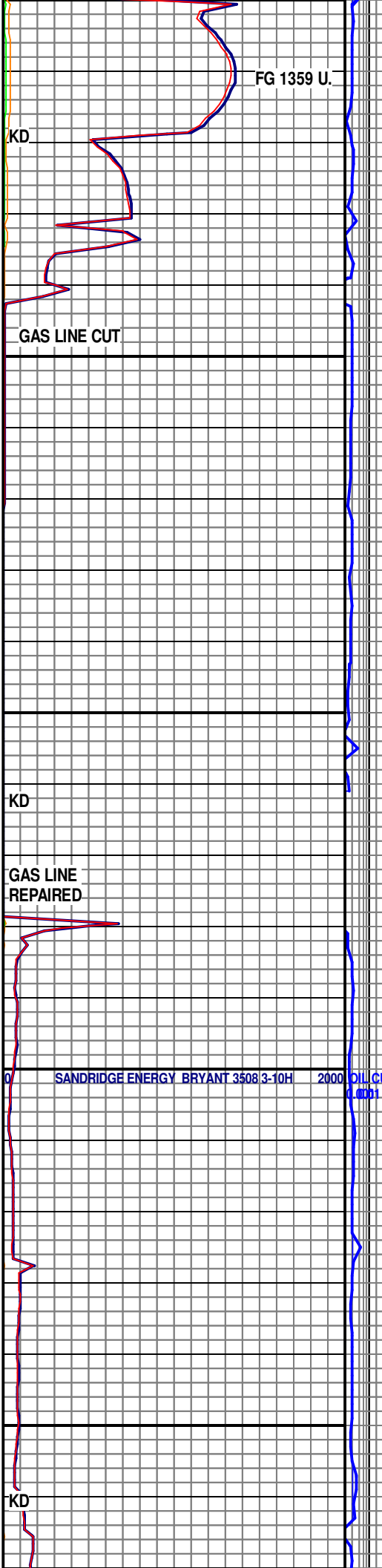
LS: MSTLY MED TAN-LT BRN,
SME CRM, FN-V FN XLN,
CHNKY-BLKY, SLI FRM-MOD
SFT, OCC BRTL, PRED PP VUG
POR, OCC VUG, ABUN BRI
GRN FLOR, FNT MLKY GRN
CUT, NO RES RING

LS: PRED DRK TAN-LT BRN,
SME CRM, FN-V FN XLN,
CHNKY-BLKY, SLI FRM-MOD
SFT, PRED PP VUG POR, OCC
VUG, ABUN BRI GRN FLOR,
FNT MLKY GRN CUT, NO RES
RING

LS: ABUN DRK TAN-LT BRN,
SME CRM, FN-V FN XLN,
CHNKY-BLKY, SLI FRM-MOD
SFT, PRED PP VUG POR, OCC
VUG, ABUN BRI GRN FLOR,
FNT MLKY GRN CUT, NO RES
RING

LS: MSTLY MED TAN-LT BRN,
SME CRM, FN-V FN XLN,
CHNKY-BLKY, SLI FRM-MOD
SFT, OCC BRTL, PRED PP VUG
POR, OCC VUG, ABUN BRI
GRN FLOR, FNT MLKY GRN
CUT, NO RES RING

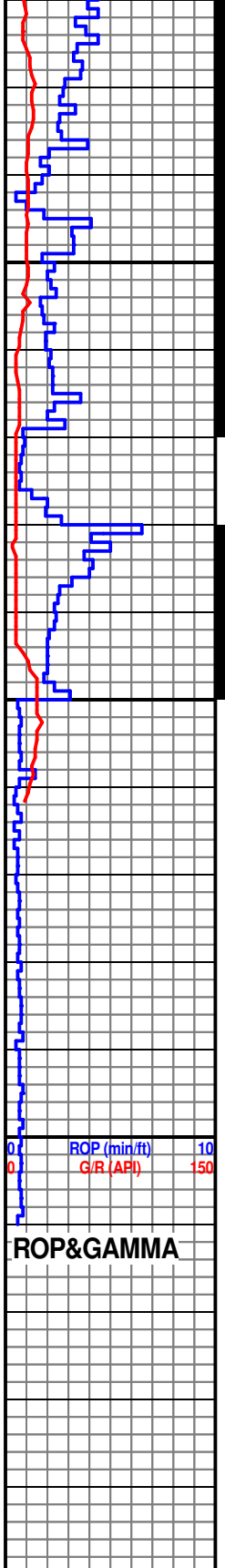
LS: MSTLY CRM- TAN, FN-V FN



MD 8897 TVD 4842.34
INC 96.4 AZ 183.25

MD 8951 TVD 4835.39
INC 98.4 AZ 186.85

WOB: 48.2
RPM: 52
GPM: 201
SPM: 67



ROP&GAMMA

8900
8950
9000
50



XLN, CHNKY-BLKY, SLI
FRM-MOD SFT ,OCC BRTL,
PRED PP VUG POR,OCC VUG,
SCAT BRI GRN FLOR, FNT
MLKY GRN CUT, NO RES RING

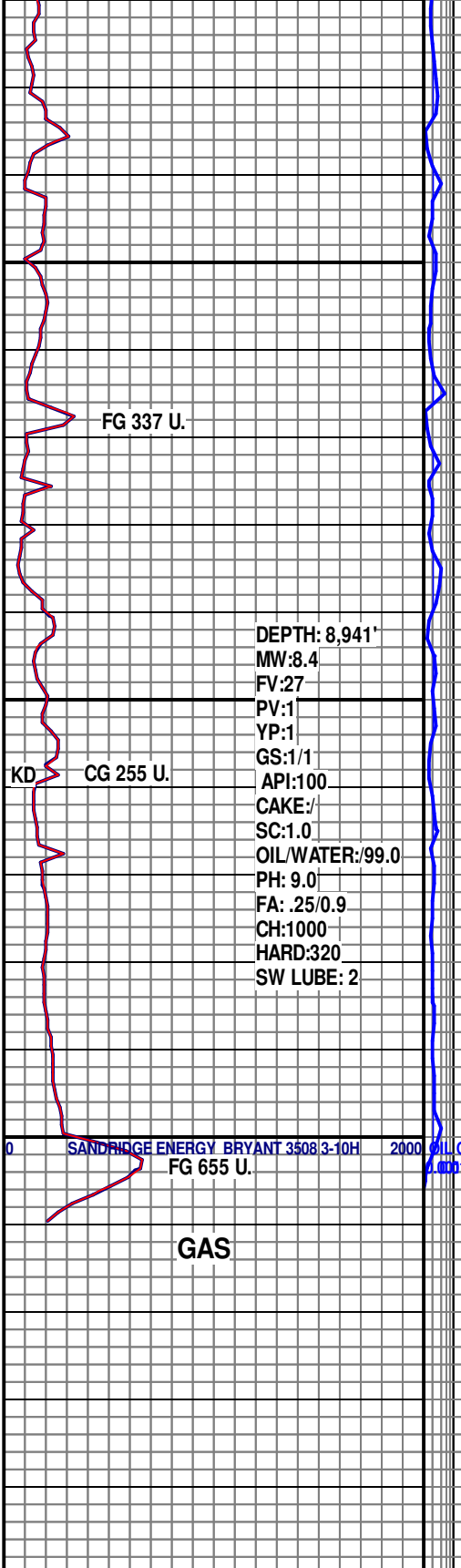
LS: ABUN CRM- TAN , FN-V FN
XLN, CHNKY-BLKY, SLI
FRM-MOD SFT ,OCC BRTL,
PRED PP VUG POR,OCC VUG,
SCAT BRI GRN FLOR, FNT
MLKY GRN CUT, NO RES RING

LS: PRED TAN- CRM, OCC LT
CRM, FN- V FN XLN, PRED
BLKY, FRM-V HRD, PR-FR VUG
POR, PR HL FRAC POR,
ABDNT YEL-GLD FLOR, NO
CUT, NO RES RING

TD WELL @ 9,010'
FOR PRODUCTION
CASING

SANDRIDGE ENERGY
INC.
Bryant 3508 2-10H
SEC. 10-T35S-R8W
Harper CO.

GL: 1,280' KB: 1,298'
TD WELL ON
8/17/2013



FG 337 U.

KD CG 255 U.

SANDRIDGE ENERGY BRYANT 3508 3-10H 2000
FG 655 U.

DEPTH: 8,941'
MW:8.4
FV:27
PV:1
YP:1
GS:1/1
API:100
CAKE:/
SC:1.0
OIL/WATER:99.0
PH: 9.0
FA: .25/0.9
CH:1000
HARD:320
SW LUBE: 2

GAS