



Green Country Wireline

GAMMA RAY  
CEMENT BOND LOG  
CCLVDL

Company	JONES & BUCK DEVELOPMENT			Country	USA
Well	PARKER # BP 26-1				
Field	PERU-SEDAN				
County	CHAUTAUQUA				
State	KANSAS				
Company	JONES & BUCK DEVELOPMENT				
Well	PARKER # BP 26-1				
Field	PERU-SEDAN				
County	CHAUTAUQUA				
State	KANSAS				
Country	USA				
Location:	API #: 15-019-27344			Other Services	
Permanent Datum	SW SW NW SE				
Log Measured From	1570' FSL & 2420' FEL				
Drilling Measured From	SEC 26 TWP 34S RGE 11E				
Elevation	991'			Elevation	
K.B.				D.F.	
G.L.	991'				
Date	10-7-13				
Run Number	1				
Depth Driller	1362'				
Depth Logger	1339'				
Bottom Logged Interval	1338'				
Top Log Interval	SURFACE				
Open Hole Size	WATER				
Type Fluid					
Density / Viscosity					
Max. Recorded Temp.	SURFACE				
Estimated Cement Top					
Time Well Ready					
Time Logger on Bottom	3				
Equipment Number	DEWEY				
Location	HERREN				
Recorded By	MR JONES				
Witnessed By					
Run Number	Borehole Record			Tubing Record	
Bit	From	To	Size	Weight	From To
Casing Record	Size	Wgt/Ft	Top	Bottom	
Surface String	8.625"		SURFACE	40'	
Prot. String					
Production String	4.5"		SURFACE	TD	
Liner					

<<< Fold Here >>>

All interpretations are opinions based on inferences from electrical or other measurements and we cannot and do not guarantee the accuracy or correctness of any interpretation, and we shall not, except in the case of gross or willful negligence on our part, be liable or responsible for any loss, costs, damages, or expenses incurred or sustained by anyone resulting from any interpretation made by any of our officers, agents or employees. These interpretations are also subject to our general terms and conditions set out in our current Price Schedule.

Comments

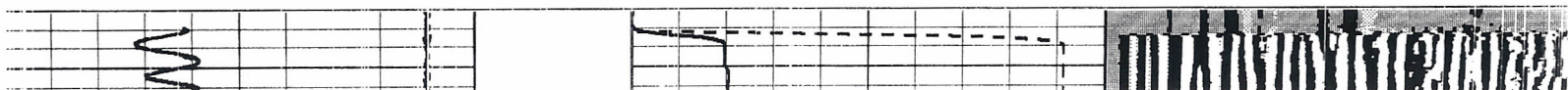


Green Country Wireline

GR CBL CCL VDL

Database File: parker261.db  
Dataset Pathname: parker261/run1/pass1  
Presentation Format: standard  
Dataset Creation: Mon Oct 07 14:18:07 2013 by Log Std Casedhole 09001  
Charted by: Depth in Feet scaled 1:240

9	Collar Locator	-1	800	TT3FT (usec)	200	200	WVF3FT	1200
0	Gamma Ray (GAPI)	60	-3	AMP3FT (mV)	300			

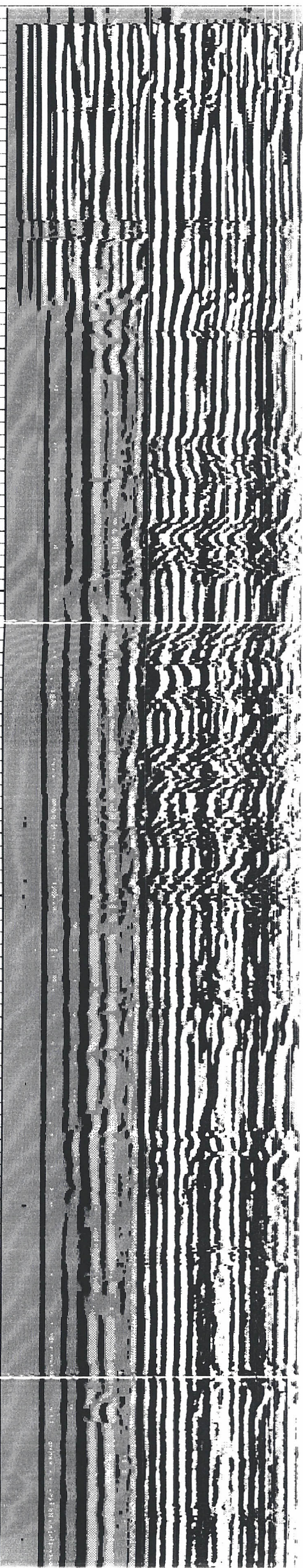
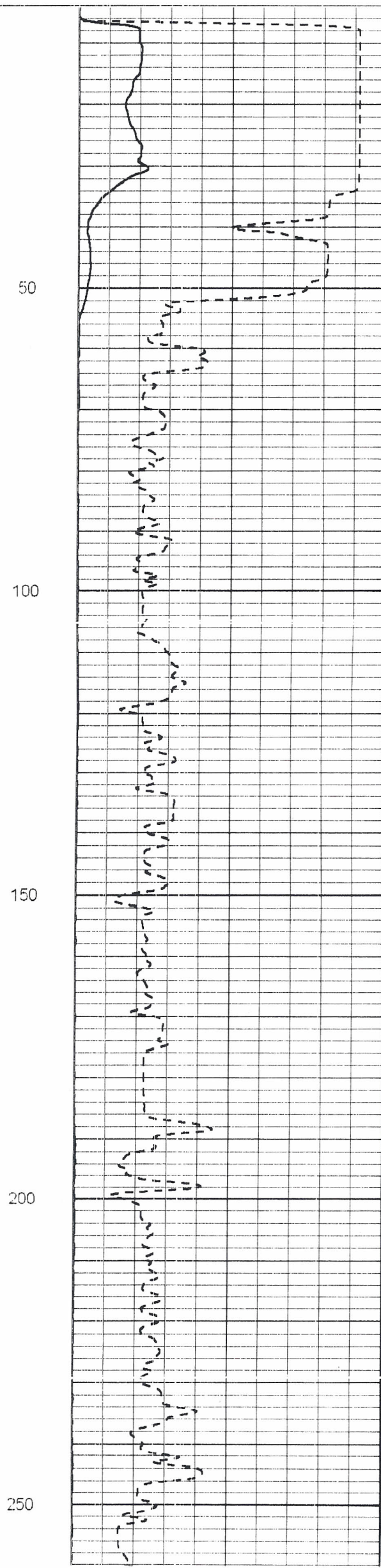
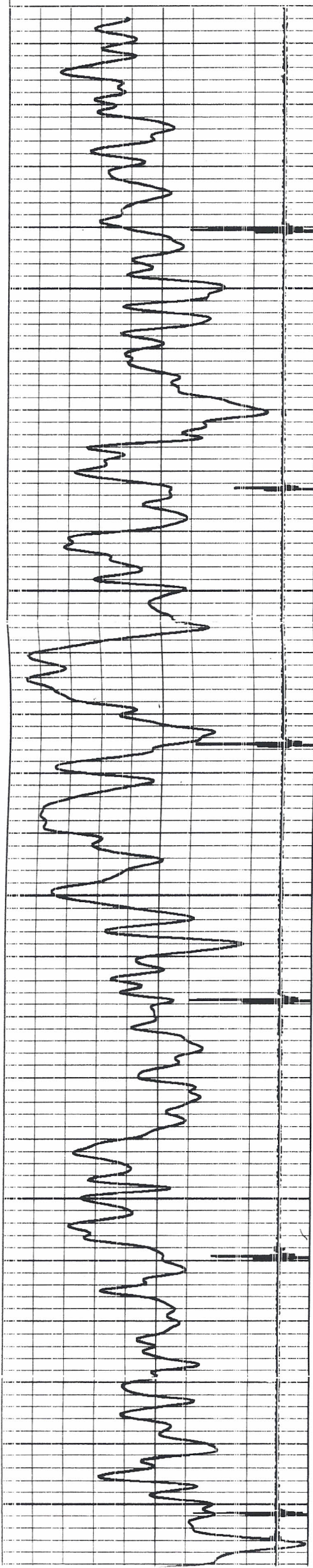




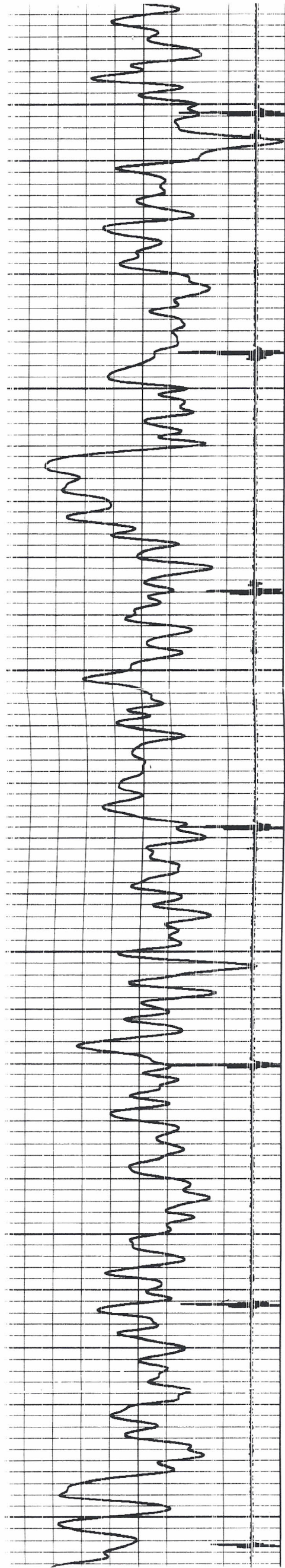
9	Collar Locator	-1
0	Gamma Ray (GAPI)	60

800	TT3FT (usec)	200
-3	AMP3FT (mV)	300

200 WVVF3FT 120







250

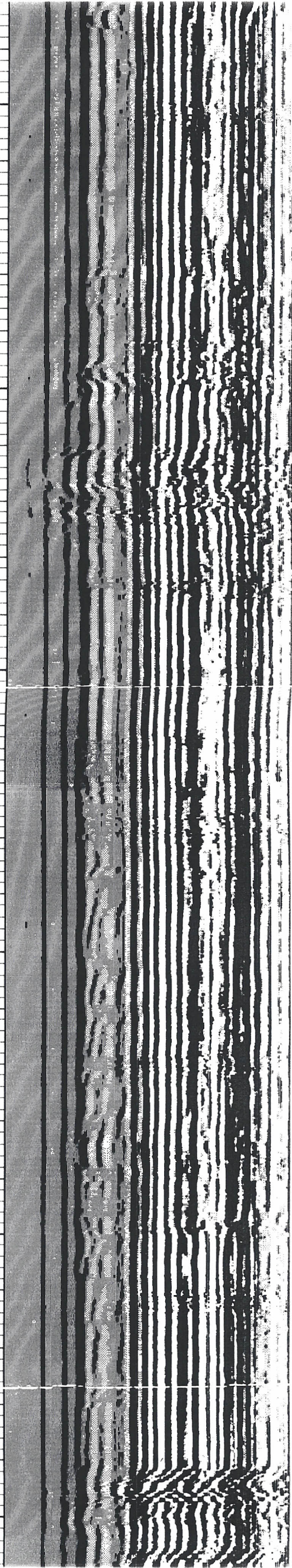
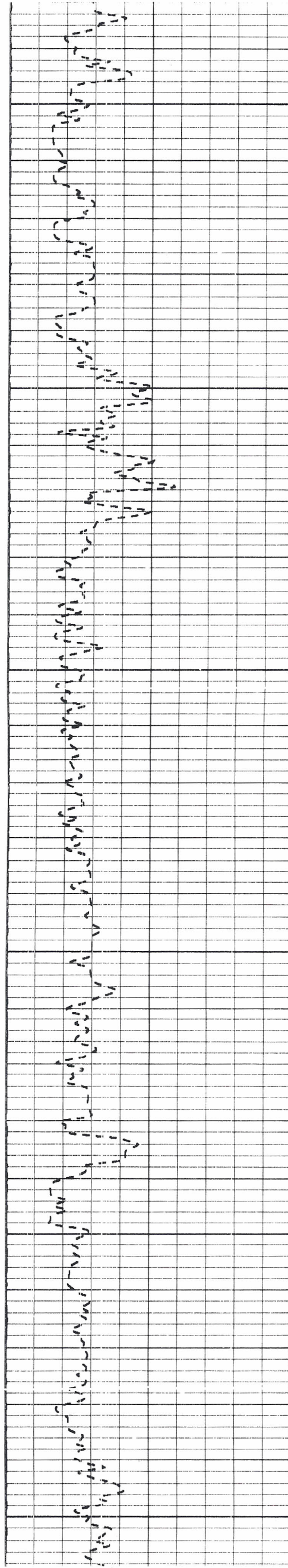
300

350

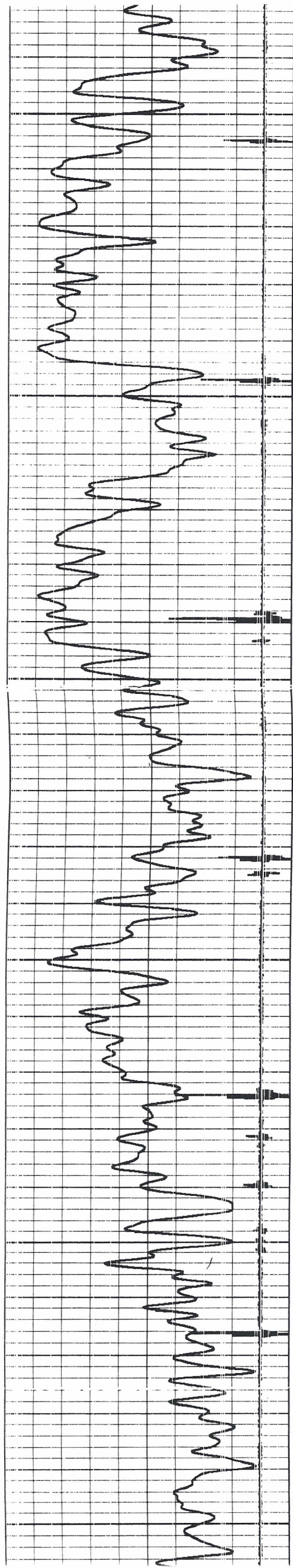
400

450

500







500

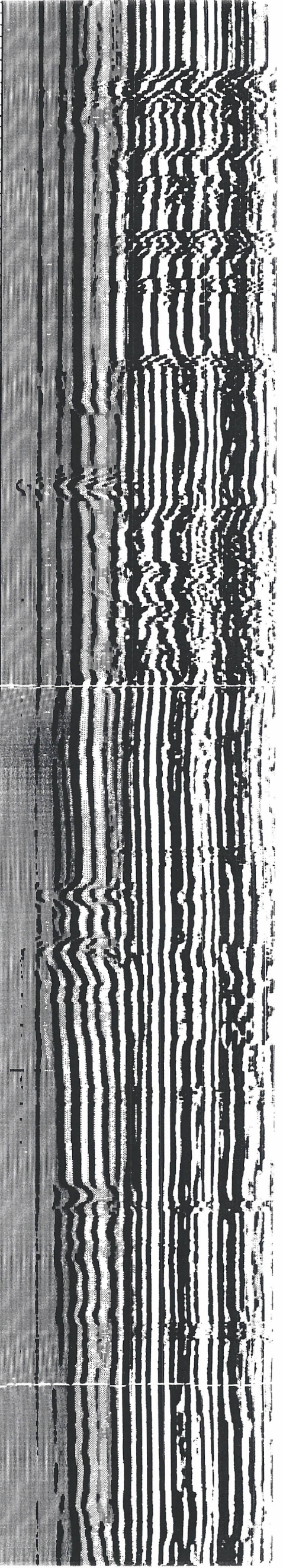
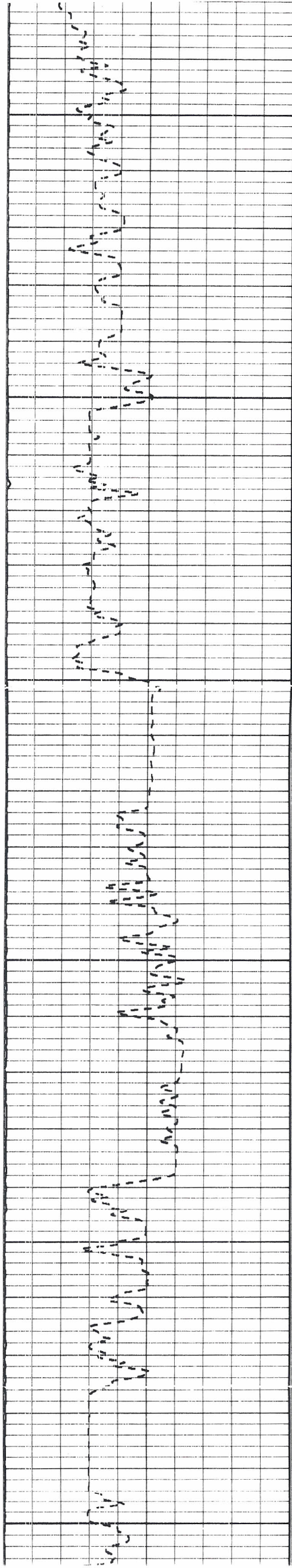
550

600

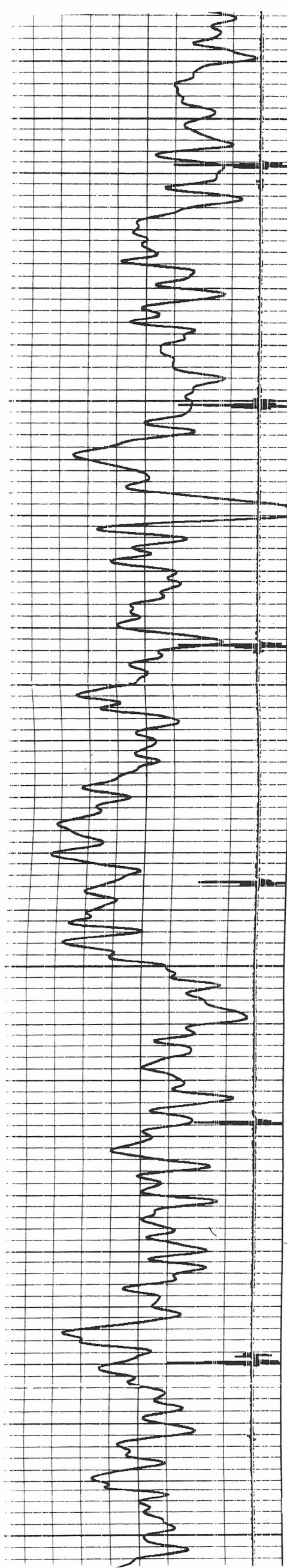
650

700

750







750

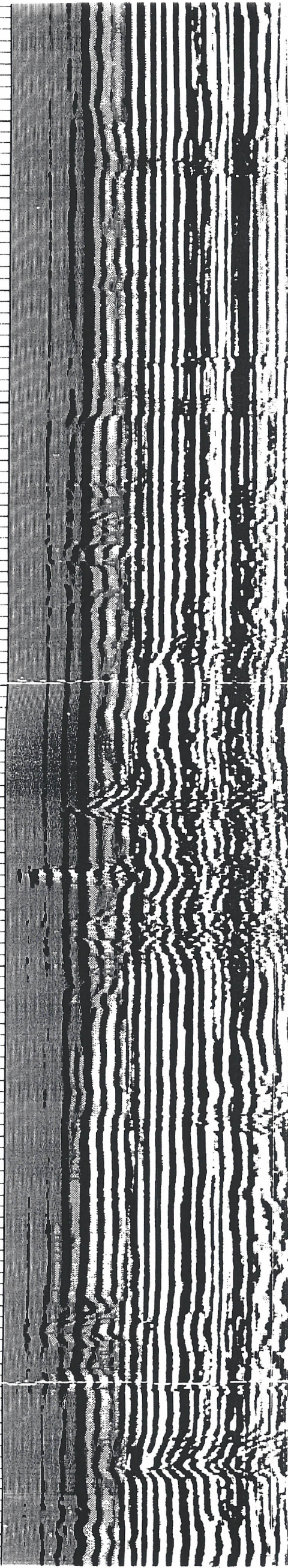
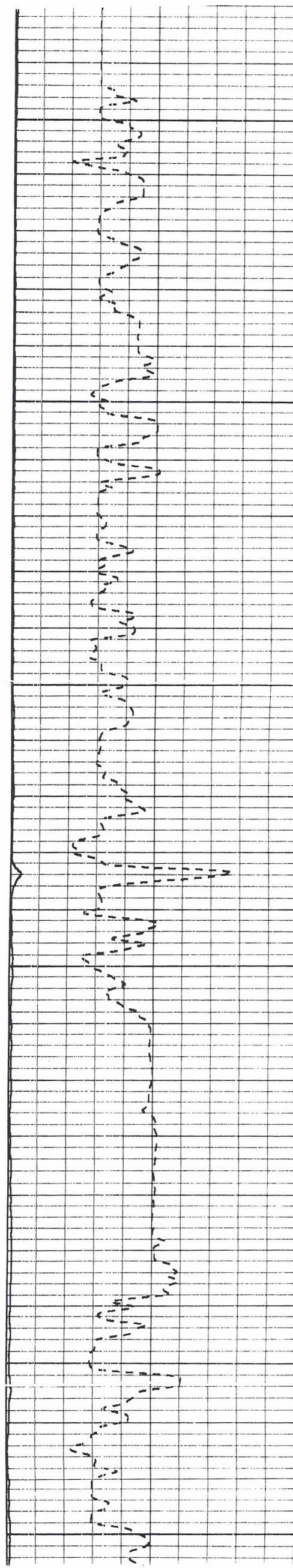
800

850

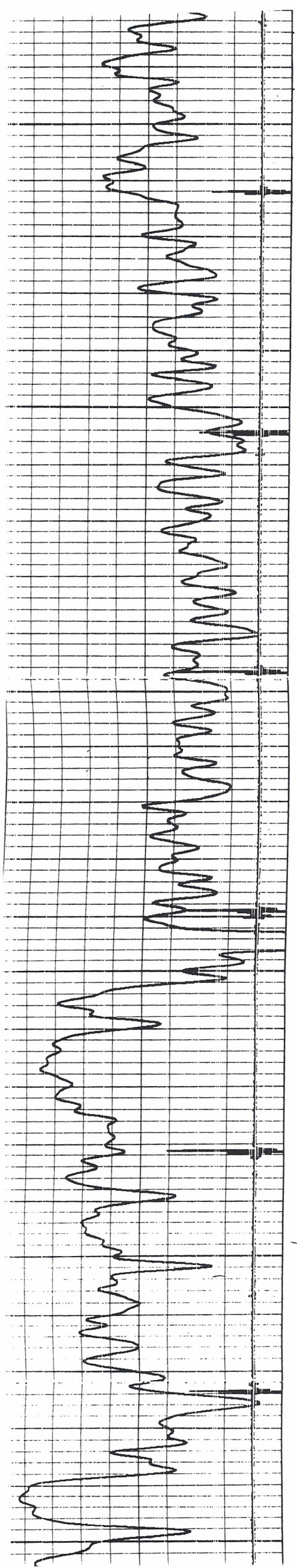
900

950

1000







1000

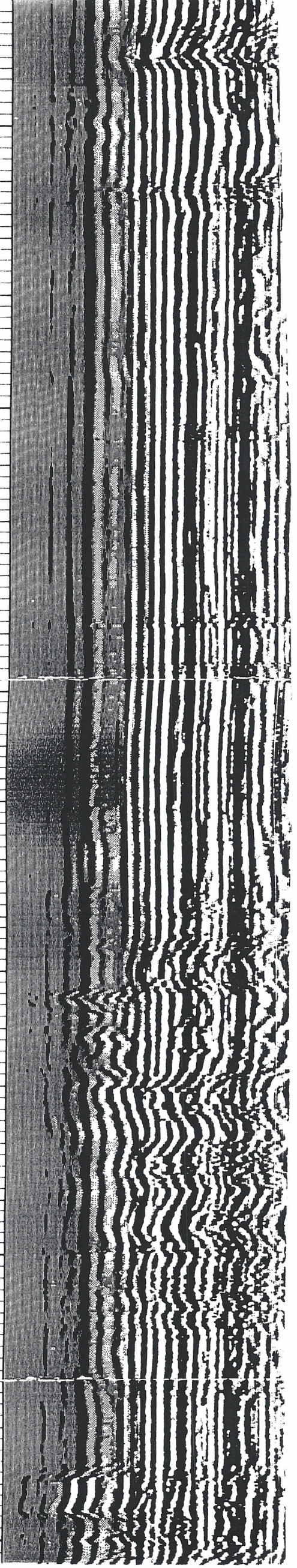
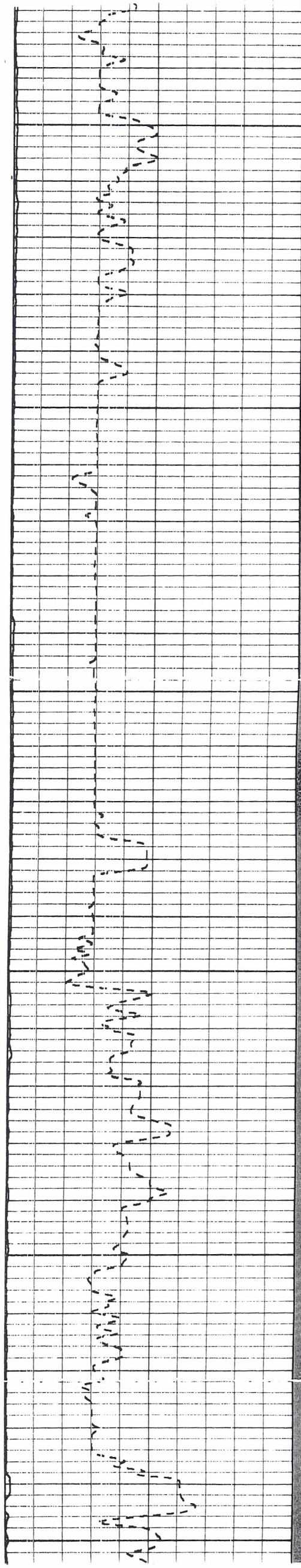
1050

1100

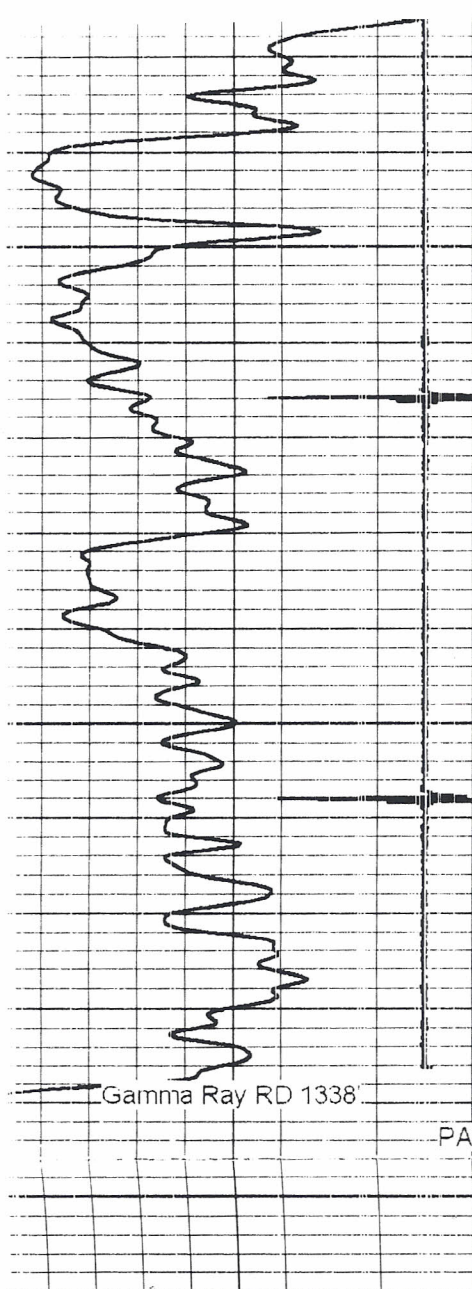
1150

1200

1250





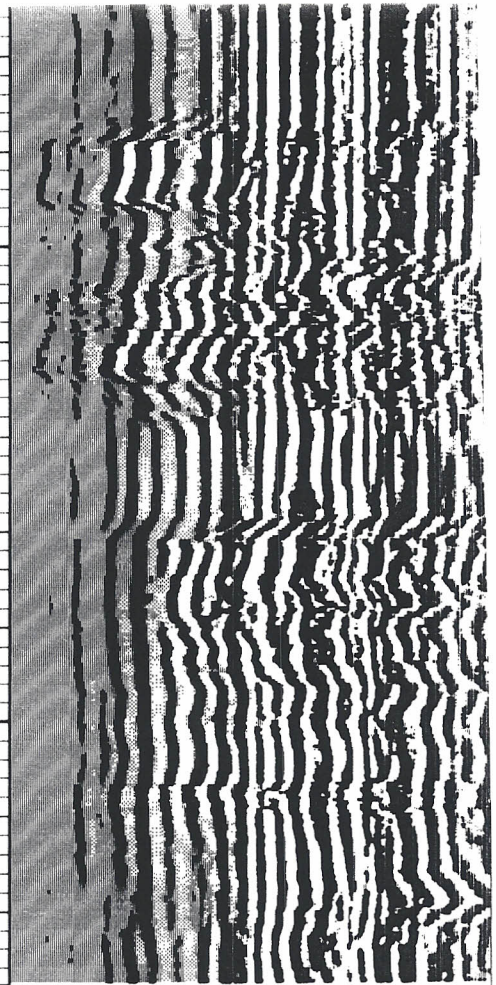
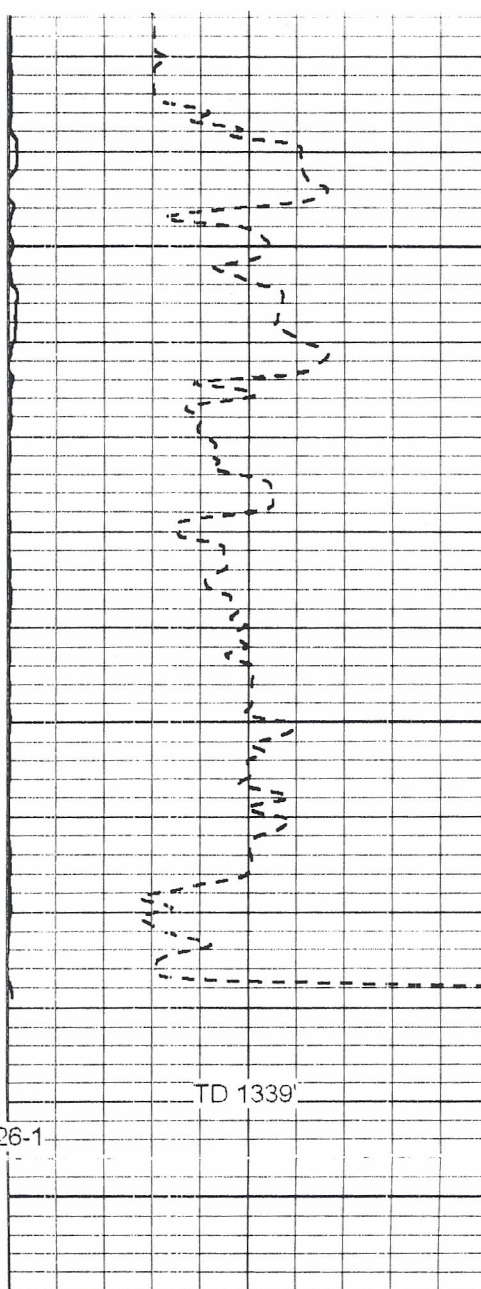


1250

1300

1350

PARKER # BP 26-1



9	Collar Locator	-1
0	Gamma Ray (GAPI)	60

800	TT3FT (usec)	200
-3	AMP3FT (mV)	300

200	WVF3FT	1200
-----	--------	------