



**COMPLETION
& PRODUCTION
SERVICES CO.**

**MICRO
LOG**

Company RAYMOND OIL COMPANY, INC.
Well HINEMAN #1
Field WILDCAT
County LANE
State KANSAS

Company RAYMOND OIL COMPANY, INC.
Well HINEMAN #1
Field WILDCAT
County LANE State KANSAS

Location: 1260' FNL & 2120' FWL
API #: 15-101-22467-0000
SEC 9 TWP 19S RGE 27W
Permanent Datum GROUND LEVEL Elevation 2713
Log Measured From KELLY BUSHING 11' A.G.L.
Drilling Measured From KELLY BUSHING
Other Services CDL/CNL DIL
Elevation K.B. 2724 D.F. 2722 G.L. 2713

Date	10/29/13
Run Number	TWO
Depth Driller	4779
Depth Logger	4780
Bottom Logged Interval	4778
Top Log Interval	3400
Casing Driller	8 5/8" @ 266'
Casing Logger	265'
Bit Size	7 7/8
Type Fluid in Hole	CHEMICAL MUD
Density / Viscosity	9.3 / 60
pH / Fluid Loss	10.5 / 5.6
Source of Sample	FLOWLINE
Rin @ Meas. Temp	1.50 @ 74F
Rmf @ Meas. Temp	1.13 @ 74F
Rmc @ Meas. Temp	1.80 @ 74F
Source of Rmf / Rmc	MEASURED
Rin @ BHT	0.90 @ 123F
Time Circulation Stopped	2 HOURS
Time Logger on Bottom	
Maximum Recorded Temperature	123F
Equipment Number	680
Location	HAYS, KS.
Recorded By	JEFF GRONEMEG
Witnessed By	KIM SHOEMAKER

<<< Fold Here >>>

All interpretations are opinions based on inferences from electrical or other measurements and we cannot and do not guarantee the accuracy or correctness of any interpretation, and we shall not, except in the case of gross or willful negligence on our part, be liable or responsible for any loss, costs, damages, or expenses incurred or sustained by anyone resulting from any interpretation made by any of our officers, agents or employees. These interpretations are also subject to our general terms and conditions set out in our current Price Schedule.

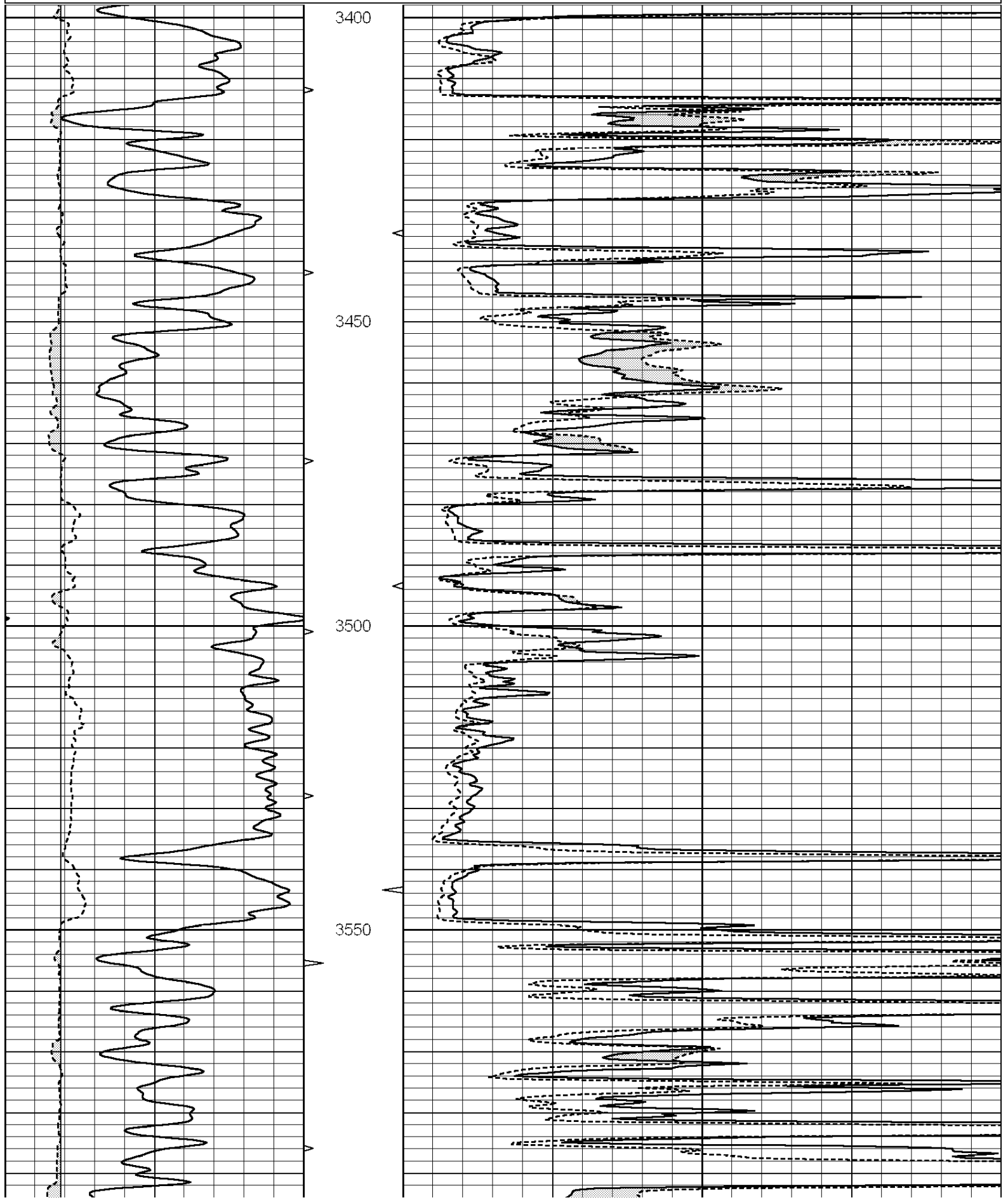
Comments

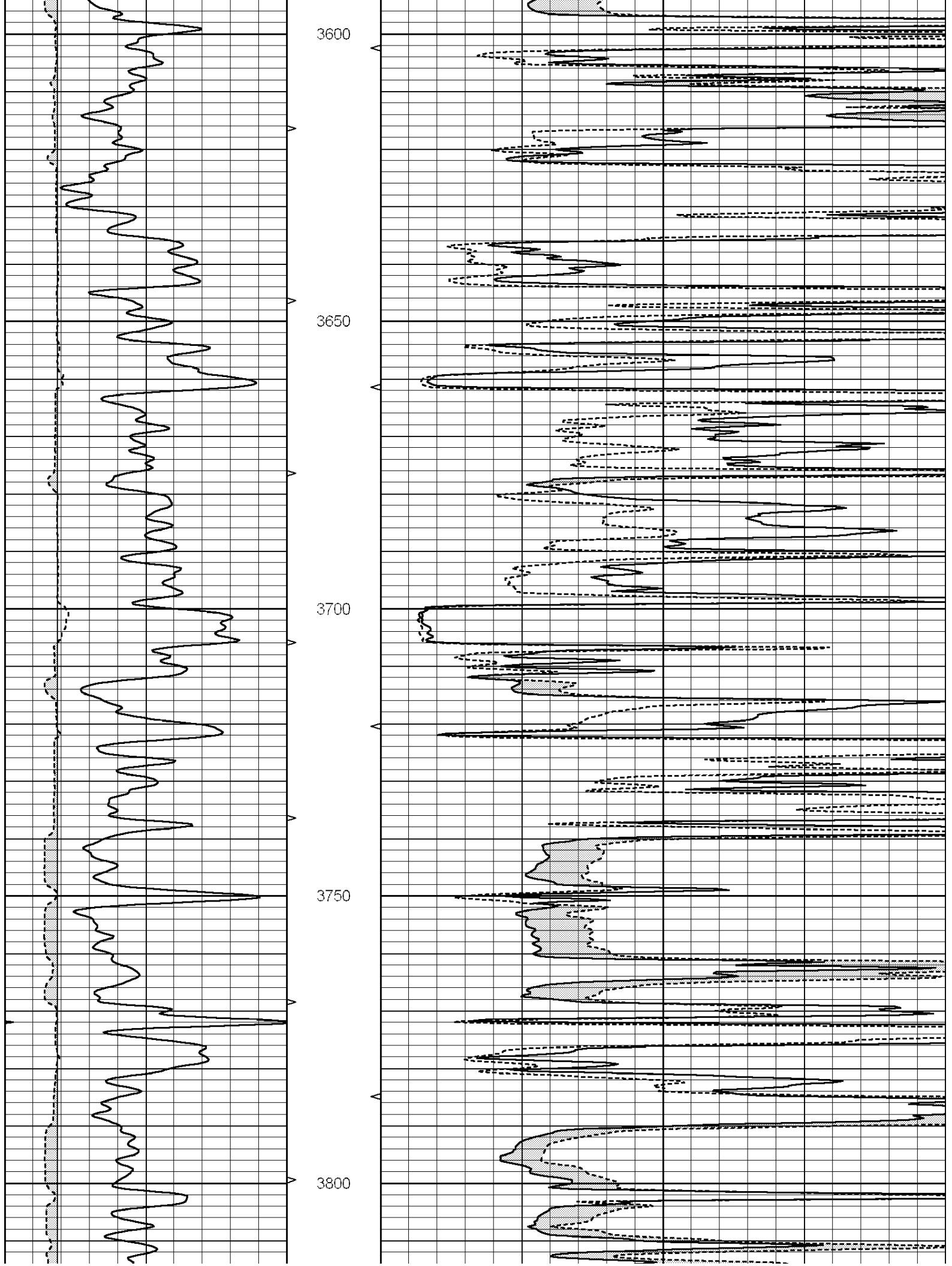
THANK YOU FOR USING NABORS COMPLETION & PRODUCTION SVCS. (785) 628-6395

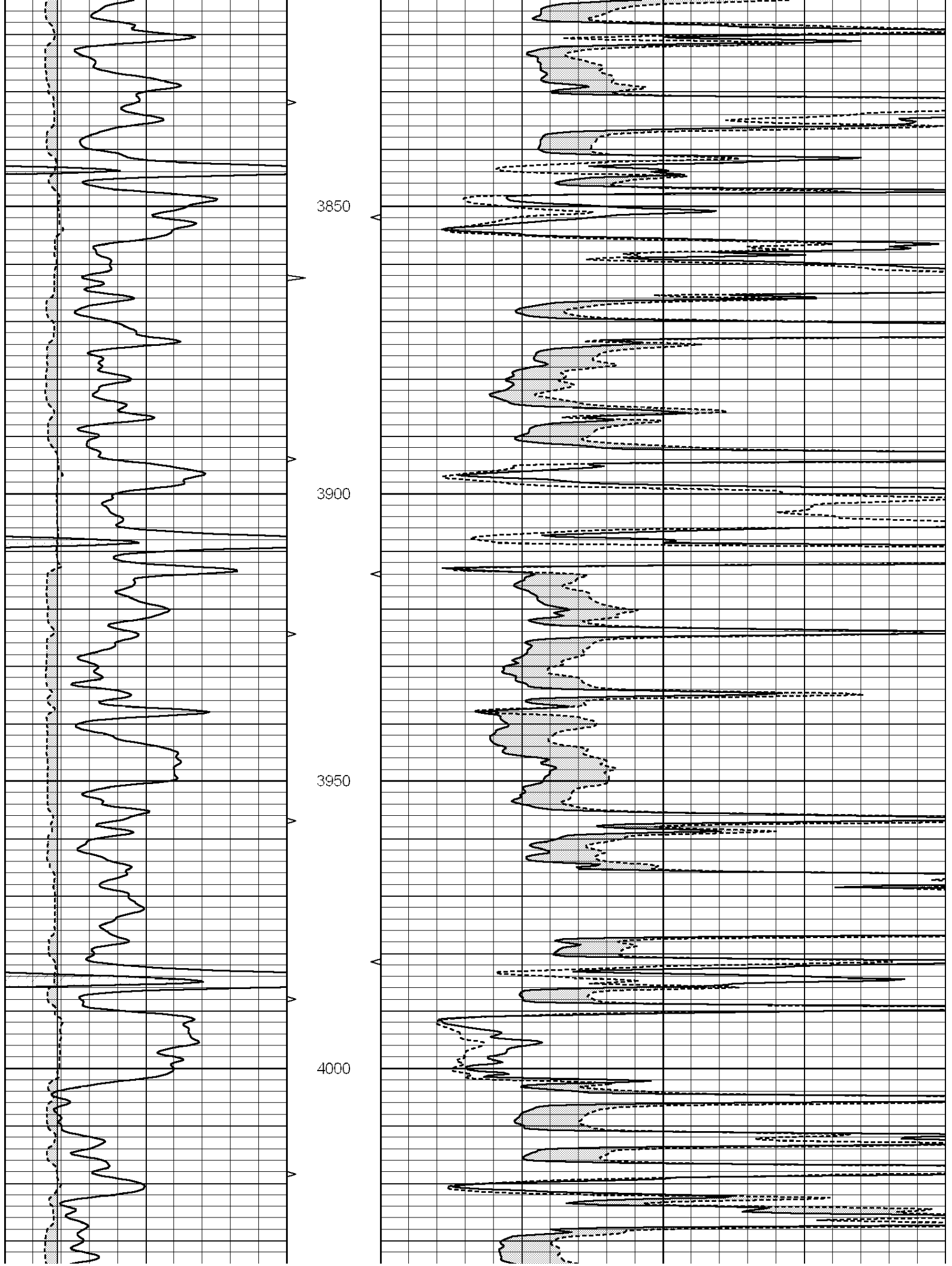
DIRECTIONS:
NESS/LANE COUNTY LINE ON HWY 96 - WEST TO TURKEY RED RD
4 MILES SOUTH - 1/2 MILE WEST - SOUTH INTO

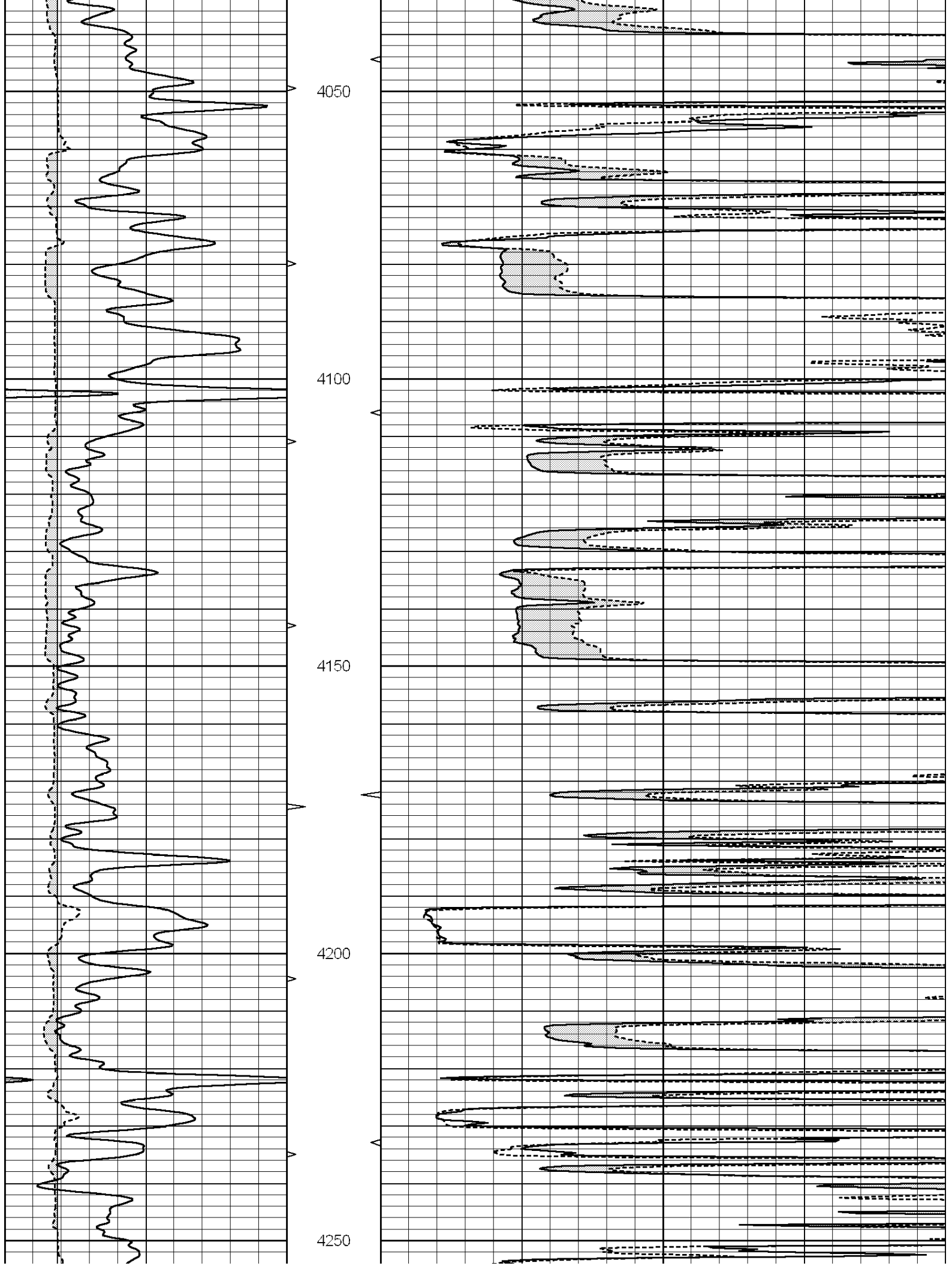
Database File: 012079ddn.db
Dataset Pathname: pass5.3
Presentation Format: _micro
Dataset Creation: Tue Oct 29 14:02:20 2013
Charted by: Depth in Feet scaled 1:240

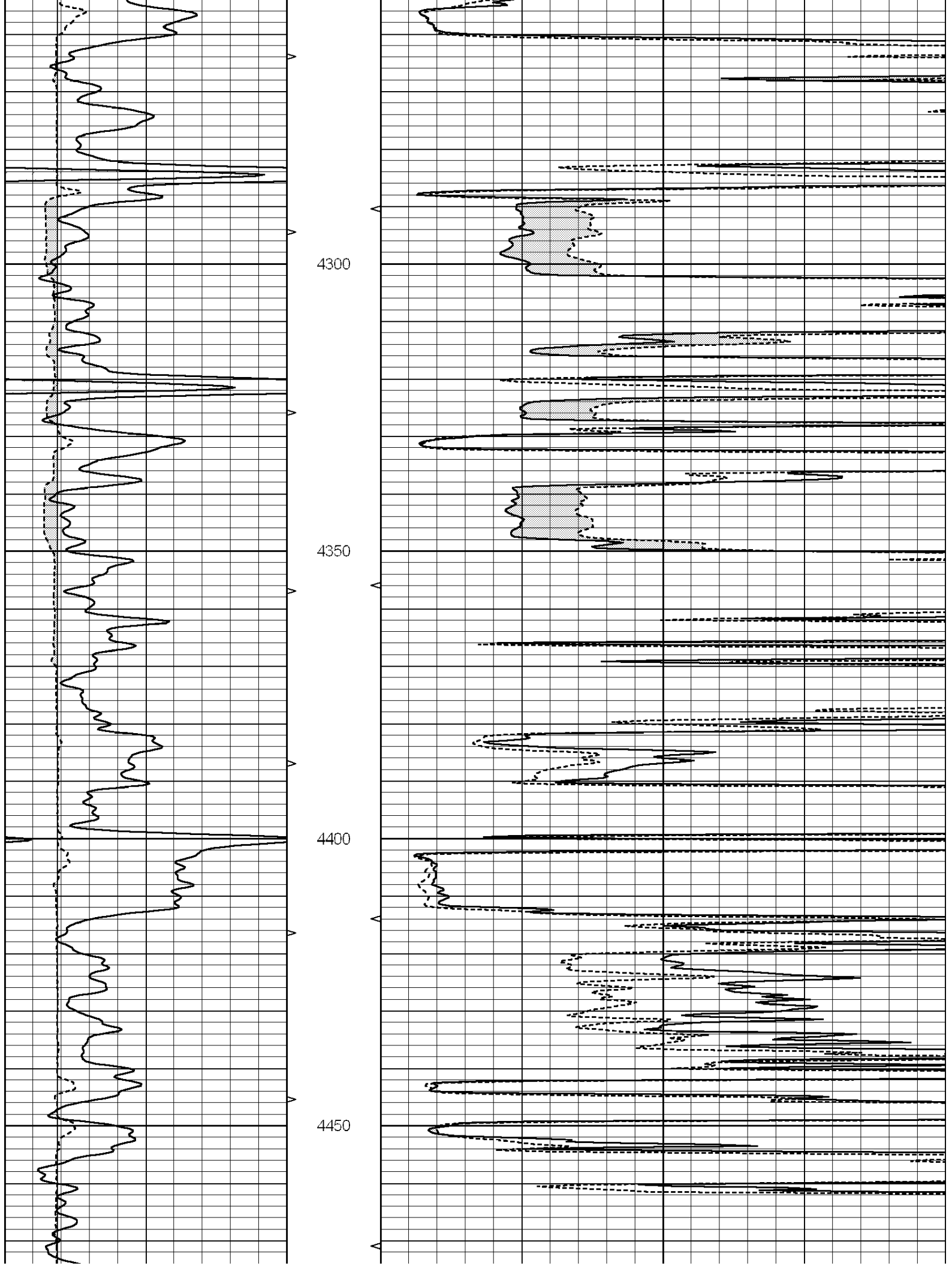
0	GAMMA RAY (GAPI)	150	ABHV	0	MEL1.5 (Ohm-m)	40
6	CALIPER (in)	16	10 (ft3)	0 0	MEL2.0 (Ohm-m)	40
			TBHV			
			0 (ft3)	10		

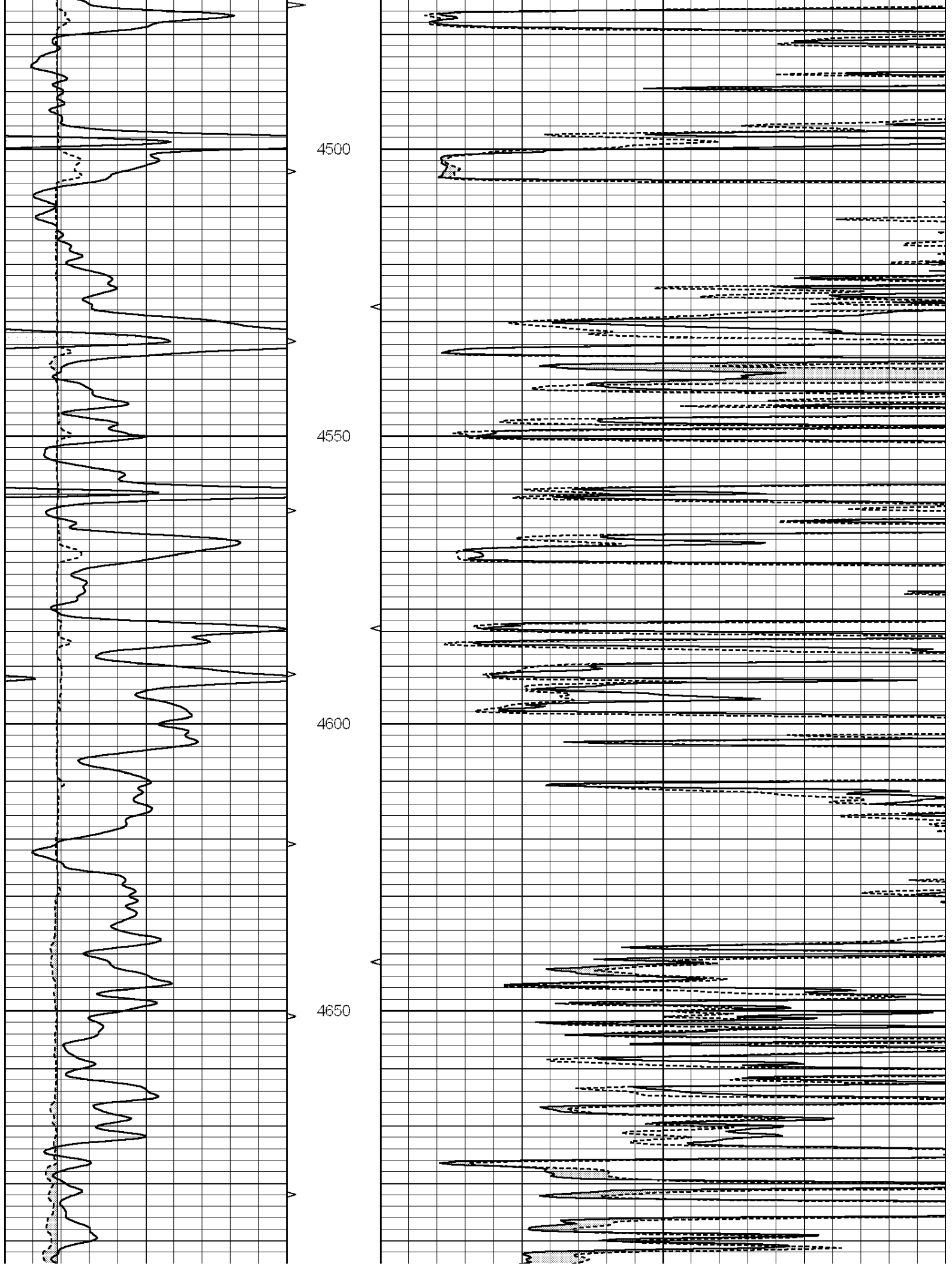


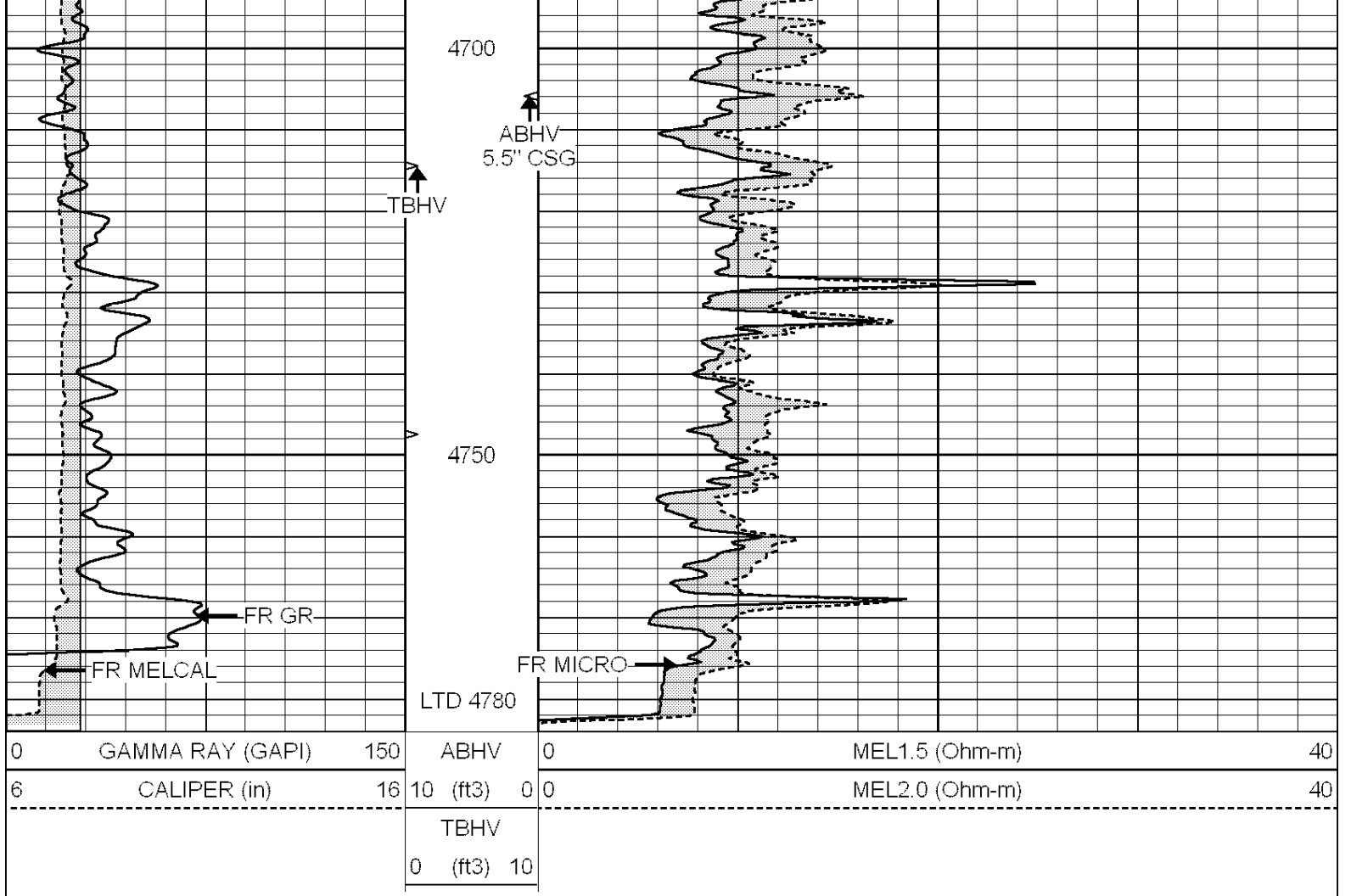










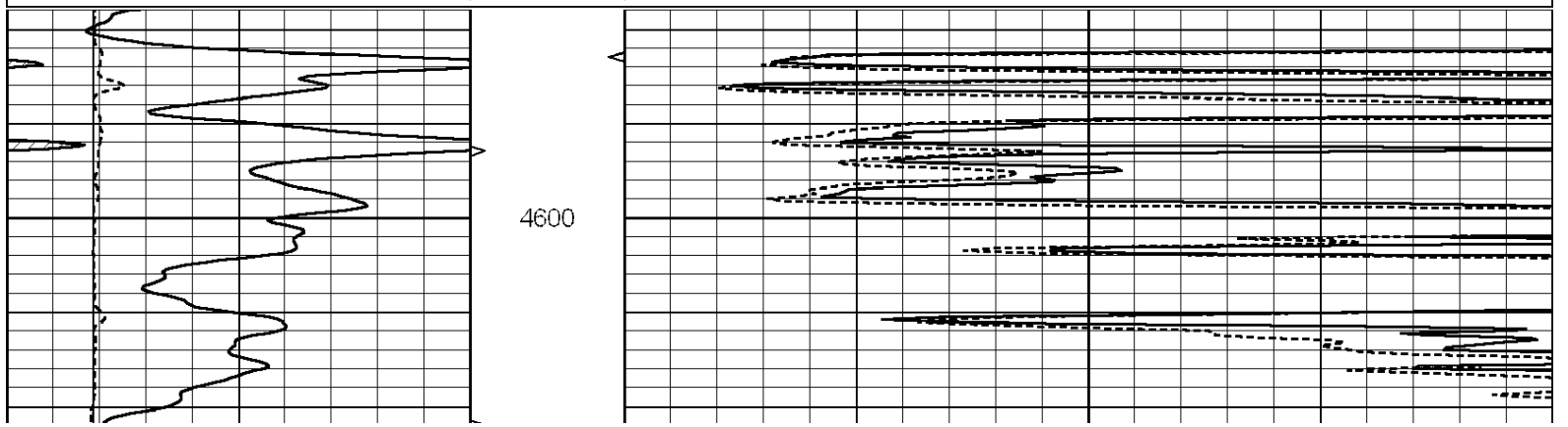


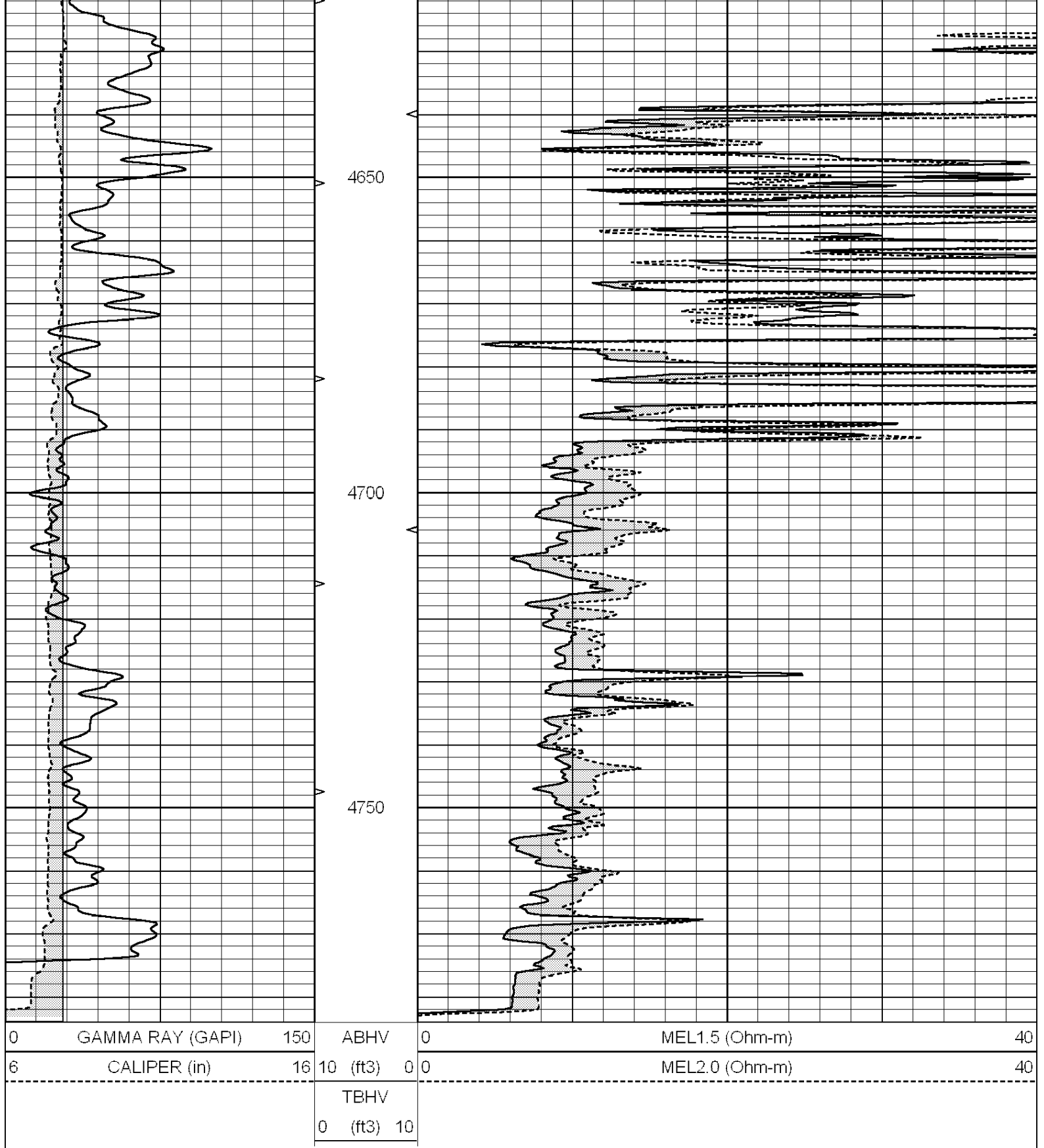
NABORS
COMPLETION & PRODUCTION SERVICES CO.

REPEAT SECTION

Database File: 012079ddn.db
 Dataset Pathname: pass4.2
 Presentation Format: _micro
 Dataset Creation: Tue Oct 29 13:34:19 2013
 Charted by: Depth in Feet scaled 1:240

0	GAMMA RAY (GAPI)	150	ABHV	0	MEL1.5 (Ohm-m)	40
6	CALIPER (in)	16	10 (ft3)	0 0	MEL2.0 (Ohm-m)	40
			TBHV			
			0 (ft3)	10		





Calibration Report

Database File: 012079ddn.db
 Dataset Pathname: pass5.3
 Dataset Creation: Tue Oct 29 14:02:20 2013

MICRO Calibration Report

Serial Number: MICRO6
 Tool Model: PROBE
 Performed: Sun Jun 16 11:26:16 2013

Performed:

Mon Jun 13 11:20:10 2011

Caliper Calibration:

Gain=5.542

Offset=-1.270

References
Readings

Low Cal
8.000
1.431

High Cal
14.000
2.513

1.5" Calibration:

Gain=45.075

Offset=-0.700

References
Readings

Low Cal
0.000
0.004

High Cal
20.000
1.196

2" Calibration:

Gain=57.041

Offset=-0.600

References
Readings

Low Cal
0.000
0.006

High Cal
20.000
0.913

Gamma Ray Calibration Report

Serial Number:
Tool Model:
Performed:

#8
OPEN
Mon Jun 13 16:56:43 2011

Calibrator Value:

150.0

GAPI

Background Reading:
Calibrator Reading:

0.0
175.0

cps
cps

Sensitivity:

0.8071

GAPI/cps