



**COMPLETION  
& PRODUCTION  
SERVICES CO.**

**COMPENSATED  
DENSITY/NEUTRON  
LOG**

Company	RAYMOND OIL COMPANY, INC.	Company	RAYMOND OIL COMPANY, INC.
Well	HINEMAN #1	Well	HINEMAN #1
Field	WILDCAT	Field	WILDCAT
County	LANE	County	LANE
State	KANSAS	State	KANSAS
Location:	1260' FNL & 2120' FWL	API # :	15-101-22467-0000
Permanent Datum	GROUND LEVEL	Elevation	2713
Log Measured From	KELLY BUSHING 11' A.G.L.	Other Services	DIL/MEL
Drilling Measured From	KELLY BUSHING		
	SEC 9 TWP 19S RGE 27W		

Date	10/29/13
Run Number	ONE
Depth Driller	4779
Depth Logger	4780
Bottom Logged Interval	4756
Top Log Interval	3400
Casing Driller	8 5/8" @ 266'
Casing Logger	265'
Bit Size	7 7/8
Type Fluid in Hole	CHEMICAL MUD
Density / Viscosity	9.3 / 60
pH / Fluid Loss	10.5 / 5.6
Source of Sample	FLOWLINE
Rin @ Meas. Temp	1.50 @ 74F
Rmf @ Meas. Temp	1.13 @ 74F
Rmc @ Meas. Temp	1.80 @ 74F
Source of Rmf / Rmc	MEASURED
Rin @ BHT	0.90 @ 123F
Time Circulation Stopped	2 HOURS
Time Logger on Bottom	
Maximum Recorded Temperature	123F
Equipment Number	680
Location	HAYS, KS.
Recorded By	JEFF GRONEMEG
Witnessed By	KIM SHOEMAKER

<<< Fold Here >>>

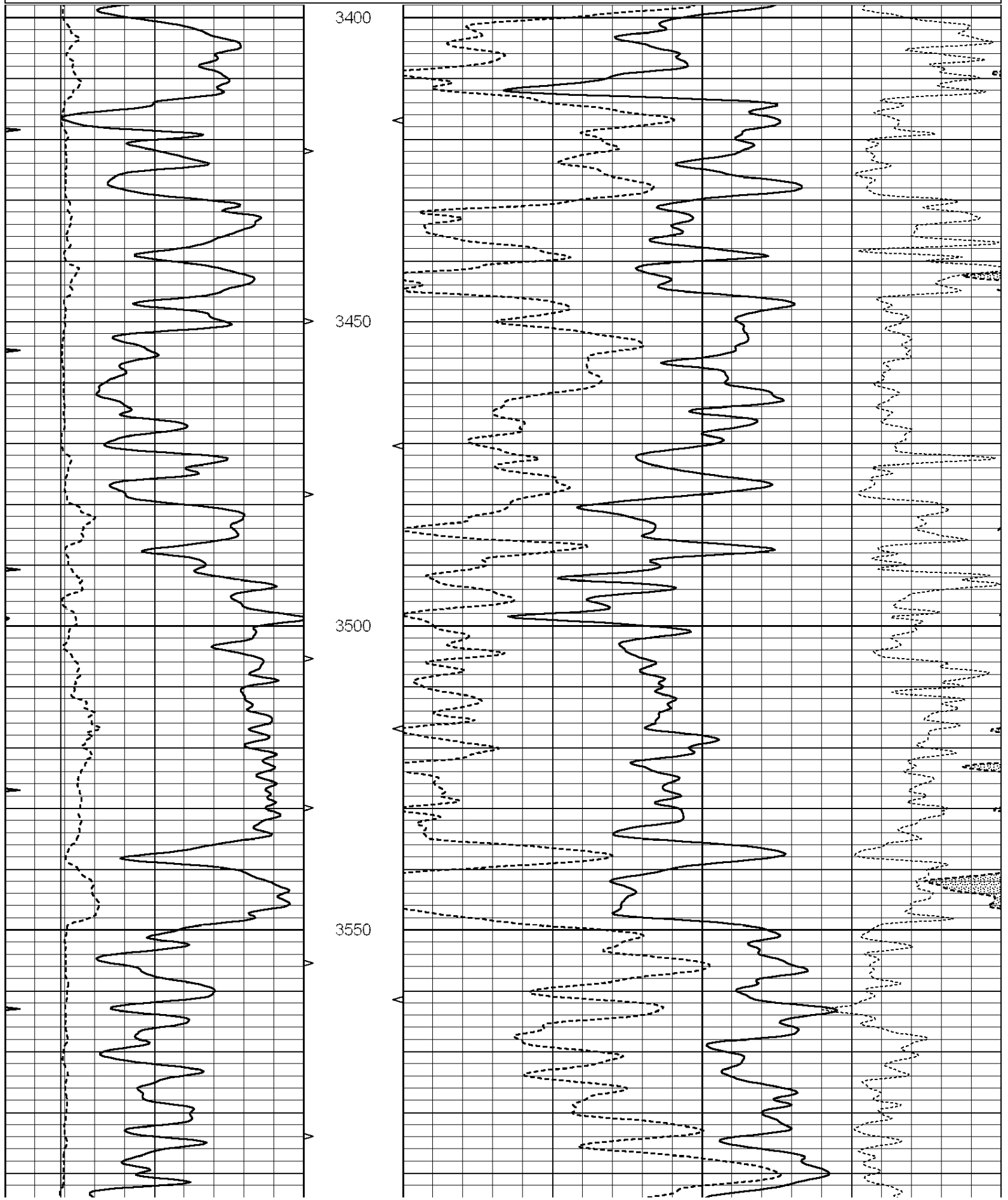
All interpretations are opinions based on inferences from electrical or other measurements and we cannot and do not guarantee the accuracy or correctness of any interpretation, and we shall not, except in the case of gross or willful negligence on our part, be liable or responsible for any loss, costs, damages, or expenses incurred or sustained by anyone resulting from any interpretation made by any of our officers, agents or employees. These interpretations are also subject to our general terms and conditions set out in our current Price Schedule.

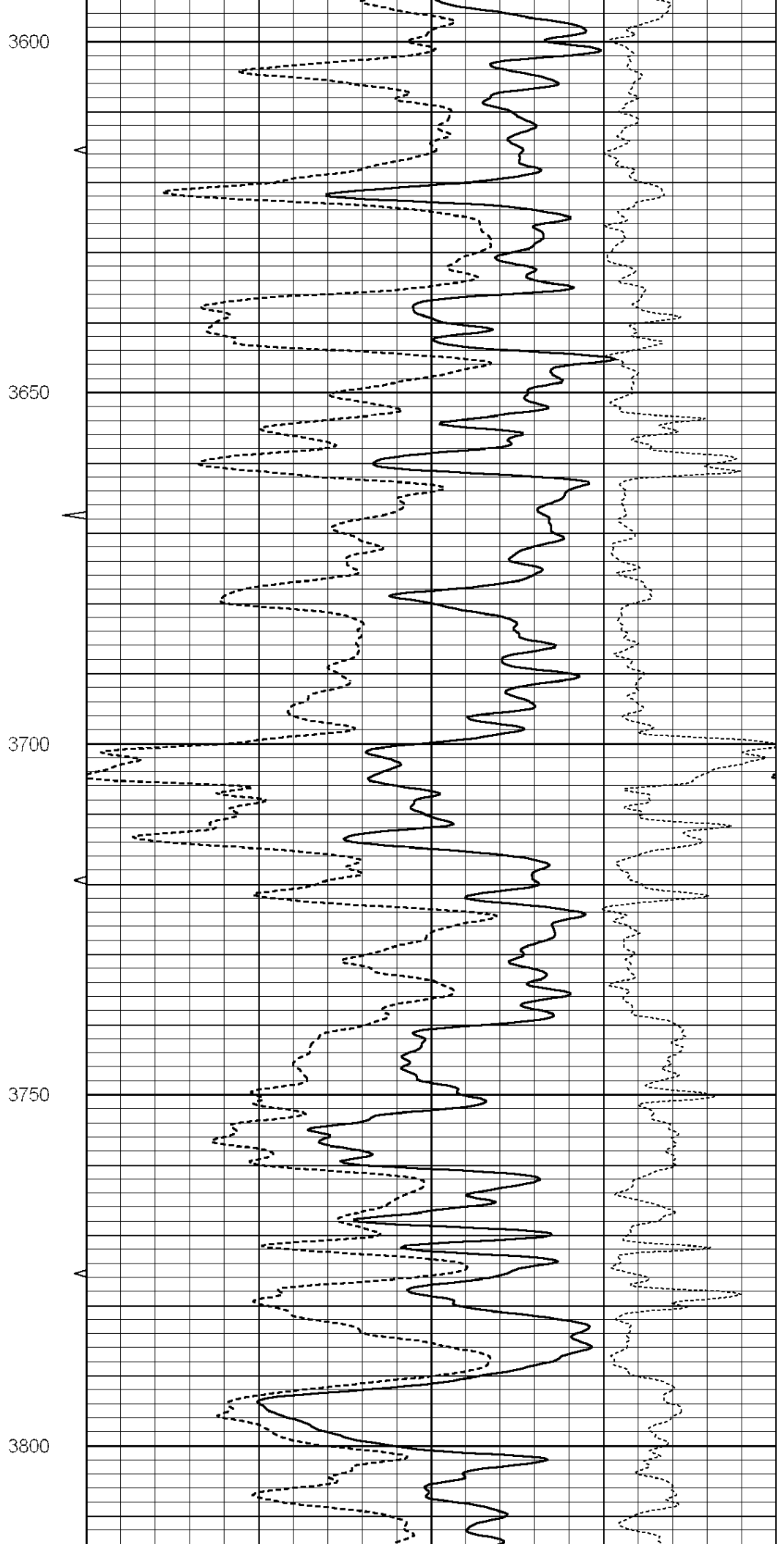
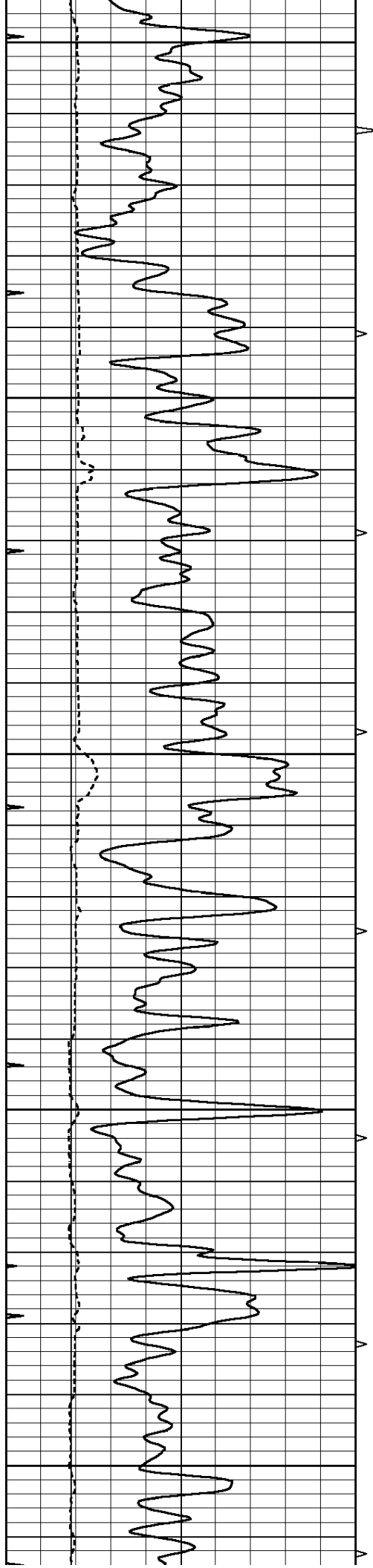
**Comments**

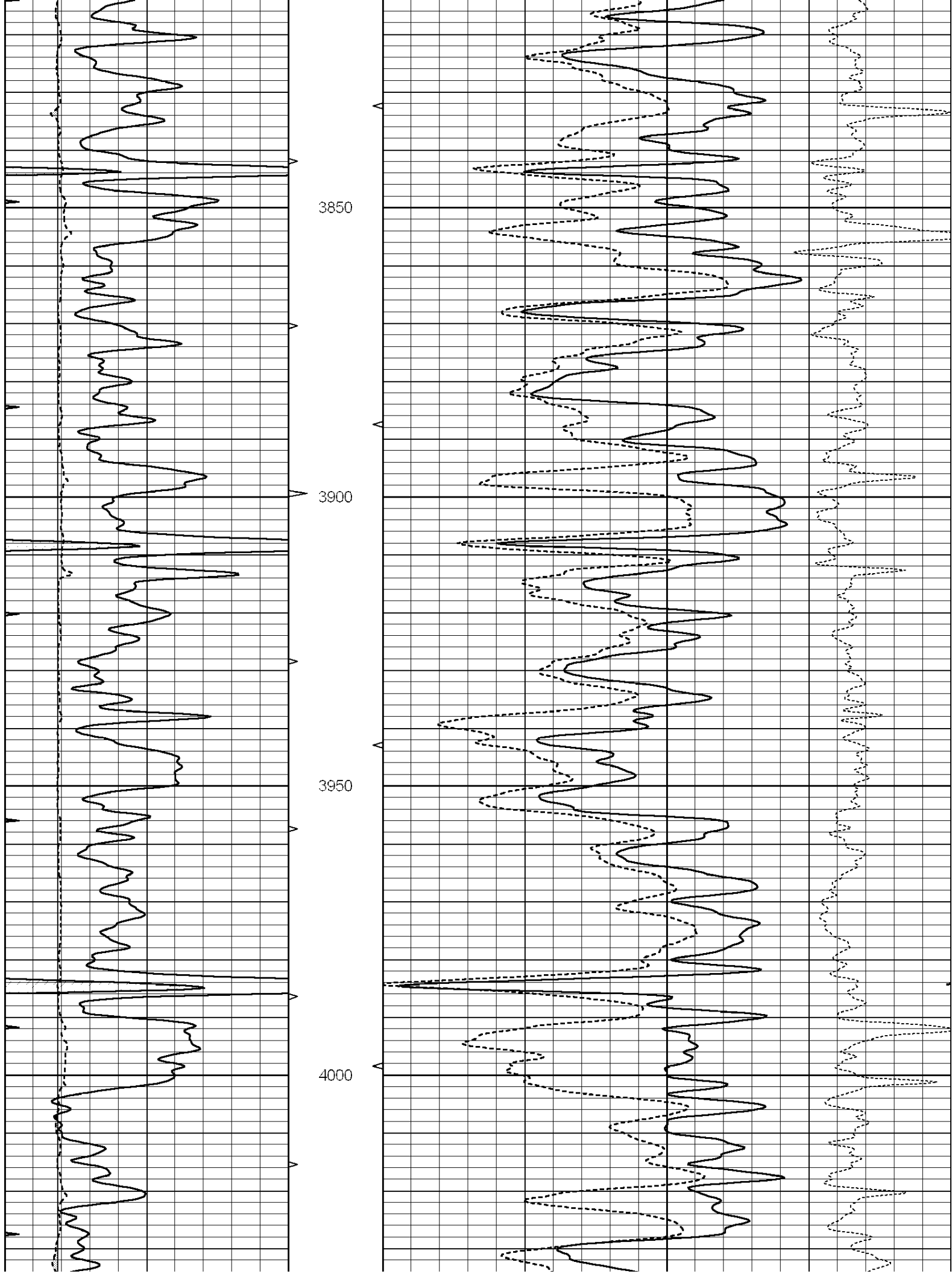
THANK YOU FOR USING NABORS COMPLETION & PRODUCTION SVCS. (785) 628-6395

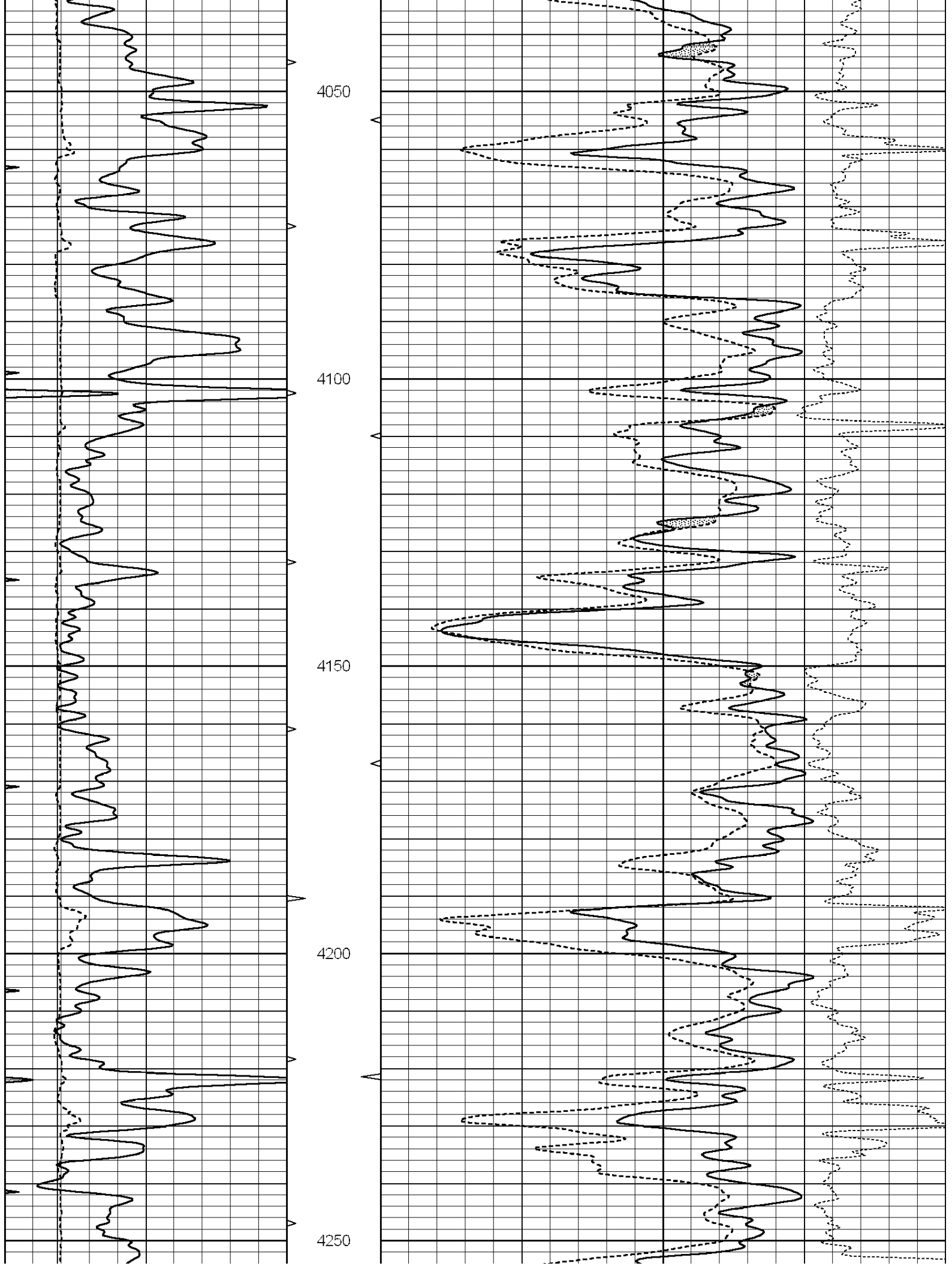
DIRECTIONS:  
NESS/LANE COUNTY LINE ON HWY 96 - WEST TO TURKEY RED RD  
4 MILES SOUTH - 1/2 MILE WEST - SOUTH INTO

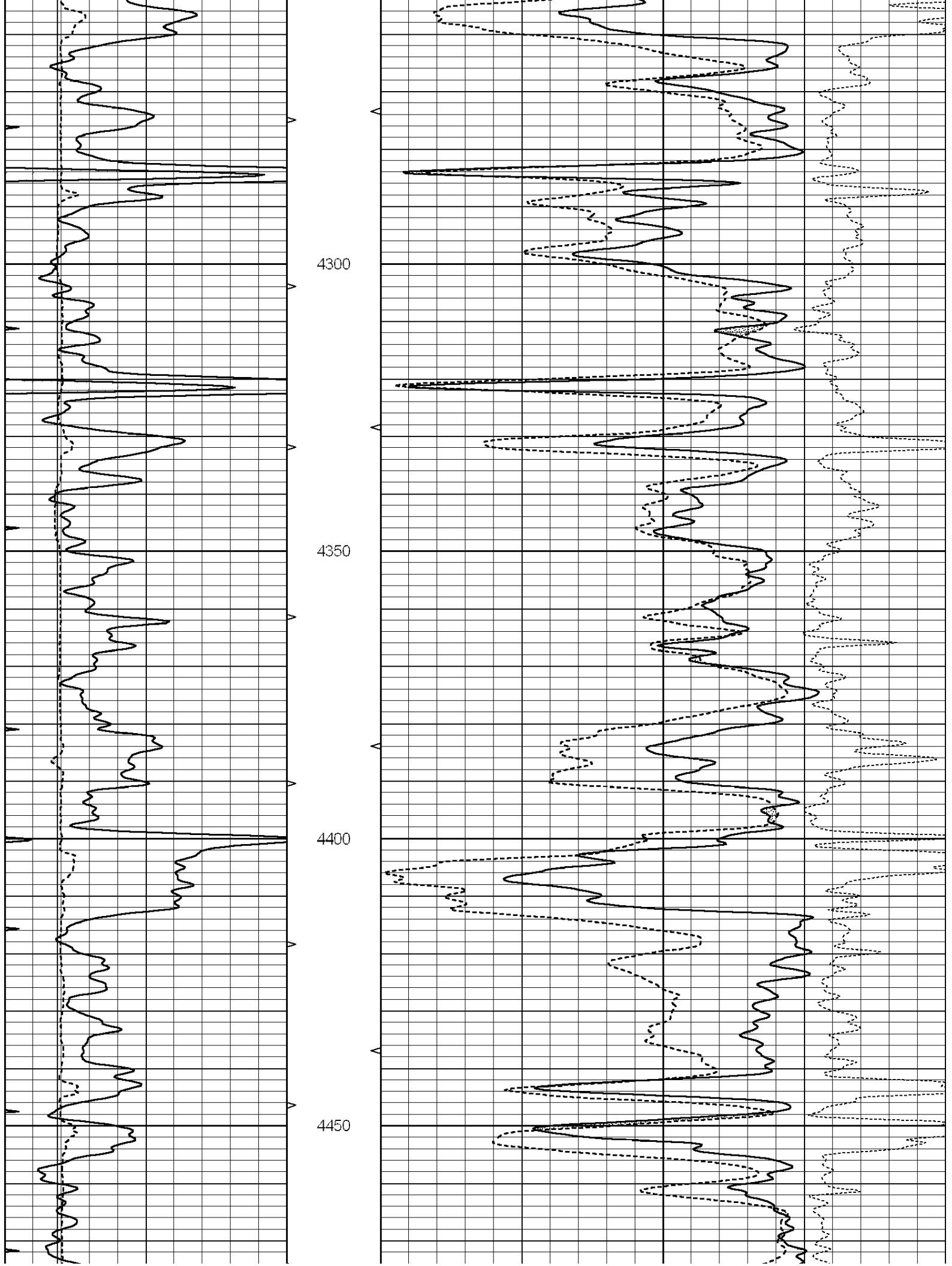
0	GAMMA RAY (GAPI)	150	AVTX	30	COMPENSATED DENSITY (pu)	-10
6	CALIPER (in)	16	10 (ft3)	0 30	COMPENSATED NEUTRON (pu)	-10
0	MINMK	20	BVTX		-0.25 CORRECTION (g/cc)	0.25
			0 (ft3)	10		

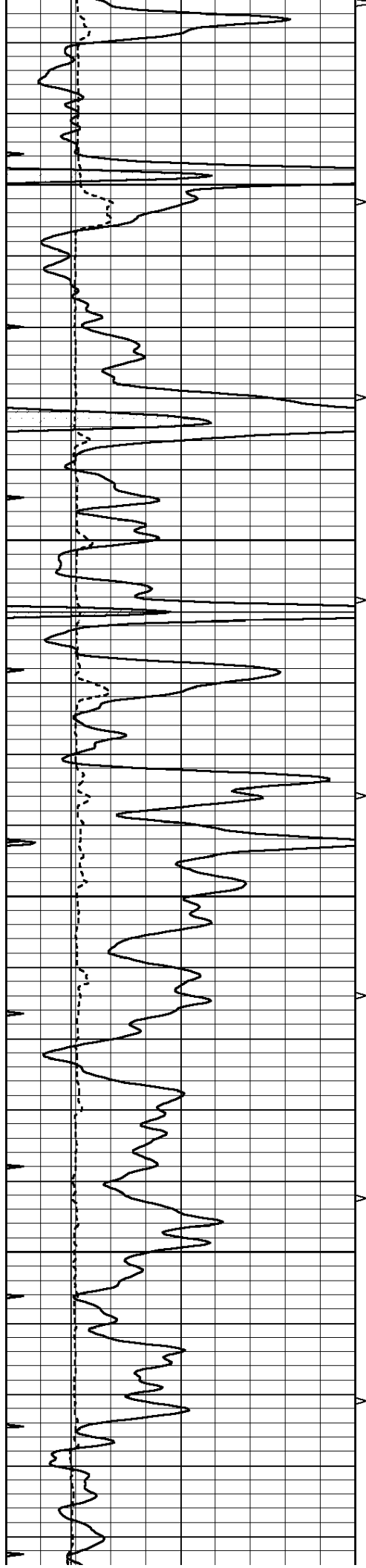










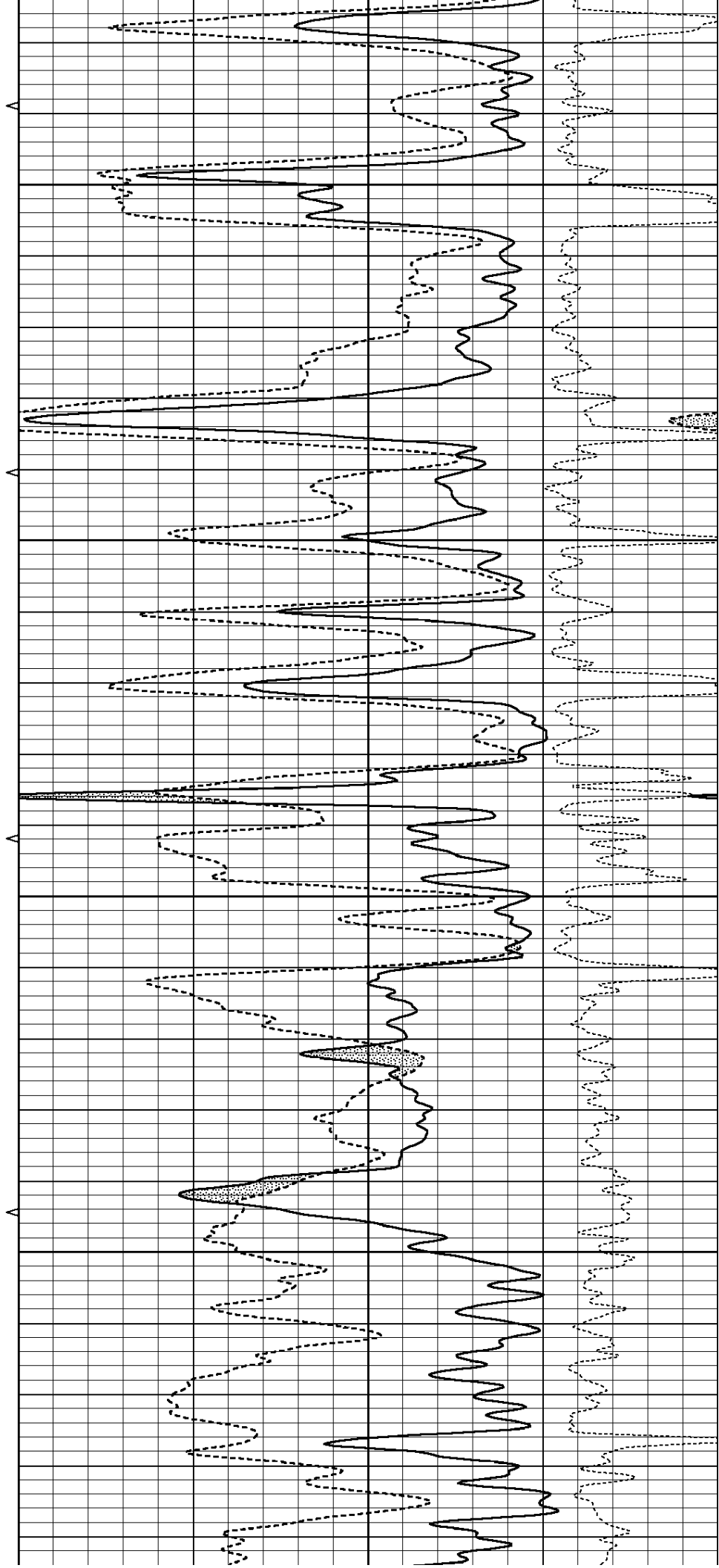


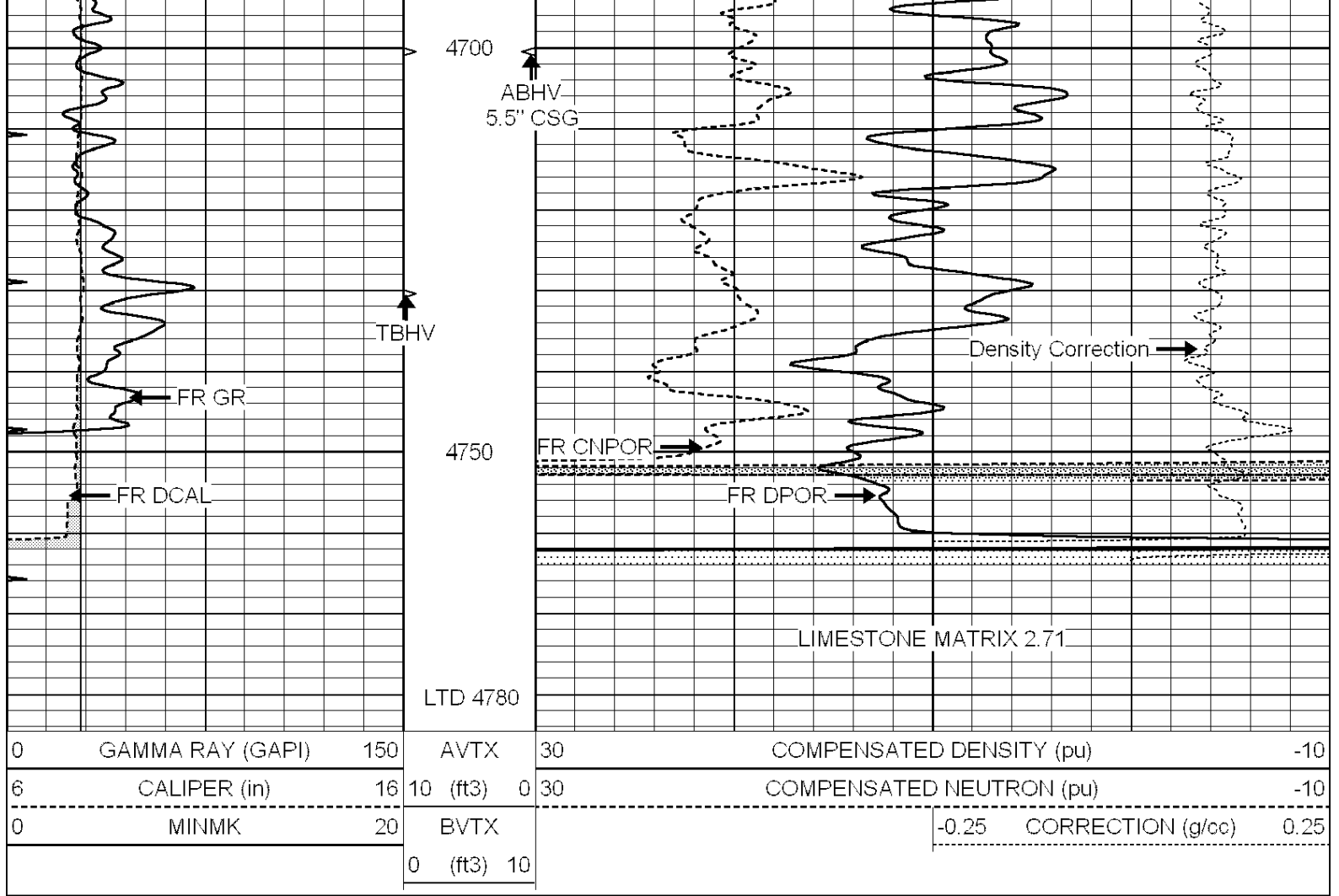
4500

4550

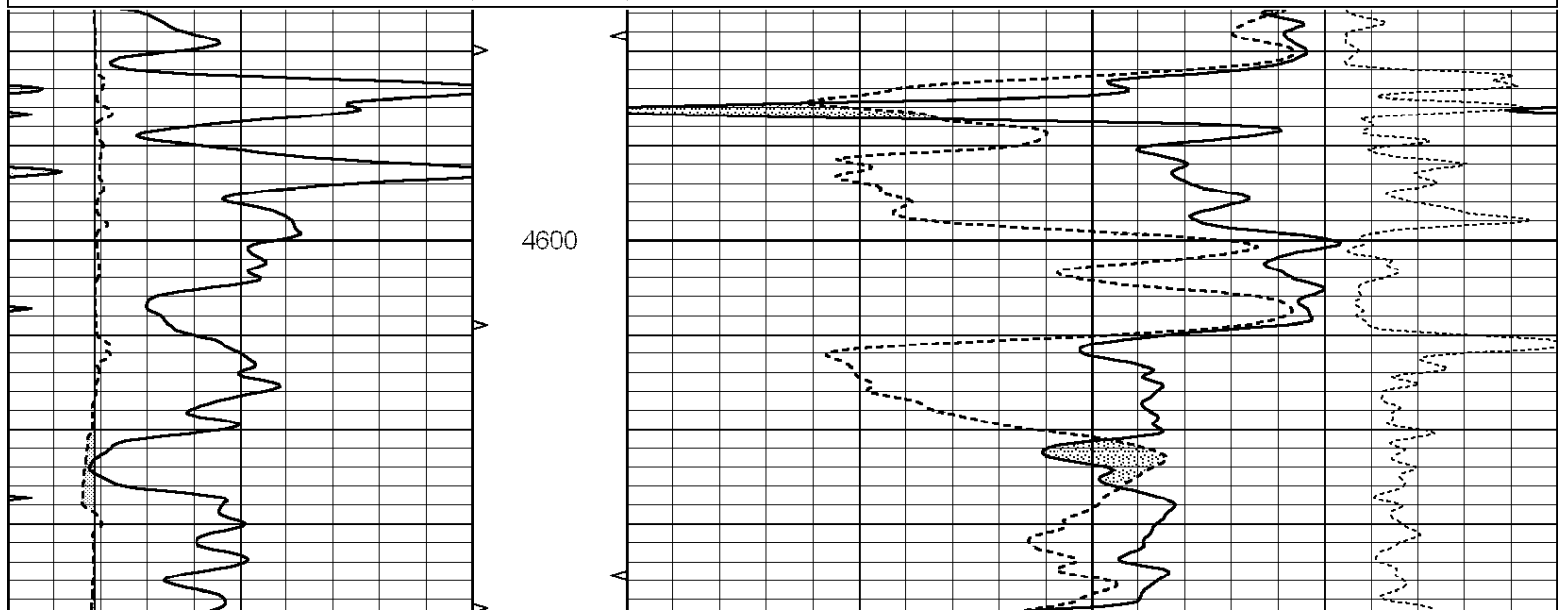
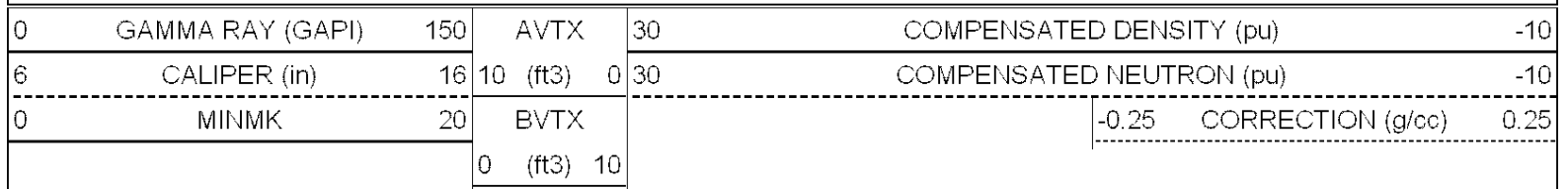
4600

4650

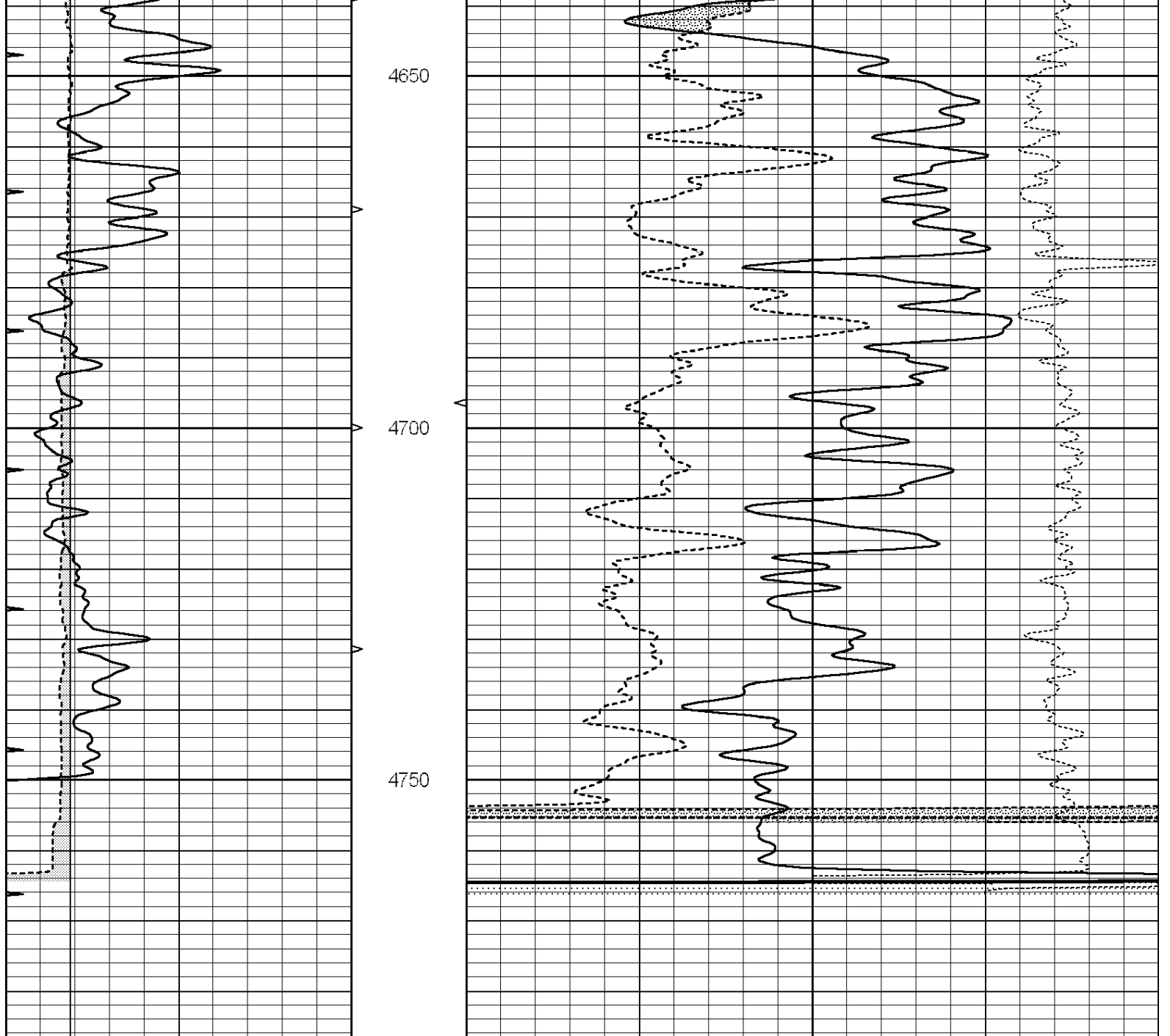




Database File: 012079ddn.db  
 Dataset Pathname: pass2.2  
 Presentation Format: \_den\_neu  
 Dataset Creation: Tue Oct 29 10:58:29 2013 by Calc Open-Cased 090629  
 Charted by: Depth in Feet scaled 1:240







0	GAMMA RAY (GAPI)	150	AVTX	30	COMPENSATED DENSITY (pu)	-10
6	CALIPER (in)	16	10 (ft3)	0 30	COMPENSATED NEUTRON (pu)	-10
0	MINMK	20	BVTX		-0.25 CORRECTION (g/cc)	0.25
			0 (ft3)	10		

Calibration Report

Database File: 012079ddn.db  
 Dataset Pathname: pass3.2  
 Dataset Creation: Tue Oct 29 11:44:12 2013 by Calc Open-Cased 090629

Dual Induction Calibration Report

Serial-Model: PROBE8-DILG  
 Surface Cal Performed: Fri Aug 01 06:33:19 2008  
 Downhole Cal Performed: Mon Jul 28 11:08:27 2008  
 After Survey Verification Performed: Mon Jul 28 11:08:27 2008

Surface Calibration

Readings

References

Results

Loop:	Air	Loop		Air	Loop		m	b
Deep	0.015	0.648	V	0.000	400.000	mmho/m	632.616	-9.730
Medium	0.029	0.796	V	0.000	464.000	mmho/m	605.049	-17.680
Internal:	Zero	Cal		Zero	Cal		m	b
Deep	0.017	0.657	V	0.000	400.000	mmho/m	625.153	-10.619
Medium	0.016	0.757	V	0.000	464.000	mmho/m	625.992	-9.739

Downhole Calibration								
	Readings			References			Results	
	Zero	Cal		Zero	Cal		m'	b'
Deep	0.000	0.000	mmho/m	2.011	405.777	mmho/m	1.000	0.000
Medium	0.000	0.000	mmho/m	7.590	503.393	mmho/m	1.000	0.000
LL3		7.500	V		1500.000	Ohm-m		
		0.000	V		20.000	Ohm-m		
		-7.200	V		3800.000	mmho-m		

After Survey Verification								
	Readings			Targets			Results	
	Zero	Cal		Zero	Cal		m'	b'
Deep	0.000	0.000	mmho/m	0.000	0.000	mmho/m	0.000	0.000
Medium	0.000	0.000	mmho/m	0.000	0.000	mmho/m	0.000	0.000
LL3		1.000	Ohm-m		1.000	Ohm-m		
		0.000	Ohm-m		0.000	Ohm-m		
		1.000	mmho-m		1.000	mmho-m		

**Compensated Density Calibration Report**

Serial-Model:	GEAR4-GEARHART
Source / Verifier:	143 / 143
Master Calibration Performed:	Mon Mar 19 19:07:19 2012

Master Calibration						
	Density		Far Detector	Near Detector		
Magnesium	1.710	g/cc	1015.91	497.51	cps	
Aluminum	2.600	g/cc	227.67	350.20	cps	
Spine Angle = 76.79			Density/Spine Ratio = 0.579			
	Size		Reading			
Small Ring	8.00	in	3.21	V		
Large Ring	14.00	in	5.46	V		

**Compensated Neutron Calibration Report**

Serial Number:	6I
Tool Model:	G

CALIBRATION						
Detector	Readings		Target		Normalization	
Short Space	1.00	cps	1.00	cps	1.0000	
Long Space	1.00	cps	1.00	cps	1.0000	

**Gamma Ray Calibration Report**

Serial Number:	#8
Tool Model:	OPEN
Performed:	Mon Jun 13 16:56:43 2011

Performed: Monday 15 10:00:43 2011

Calibrator Value:	150.0	GAPI
Background Reading:	0.0	cps
Calibrator Reading:	175.0	cps
Sensitivity:	0.8371	GAPI/cps